

V&V Reference Report

L2 ASCDS Version : 8.4.5

Observation 1914 - L2 Version 3
Chandra X-Ray Center

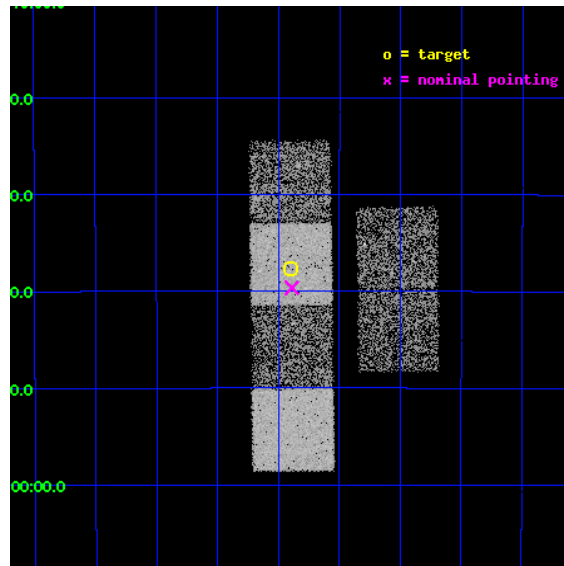
L2 Processing Date : Sep 24 2012

Contents

1	Front	2
2	OBI	3
2.1	OBI	3
2.1.1	Images	3
2.1.2	Bias	3
2.1.3	Parameters	4
2.1.4	Events	4
2.2	Compared Parameters	5
2.3	Aspect	6
2.4	Star Slots	9
2.4.1	Slot 3	9
2.4.2	Slot 4	10
2.4.3	Slot 5	11
2.4.4	Slot 6	12
2.4.5	Slot 7	13
2.5	FID Slots	14
2.5.1	Slot 0	14
2.5.2	Slot 1	15
2.5.3	Slot 2	16
A	Summary	17
A.1	Status	17
A.2	Comments	17

1 Front

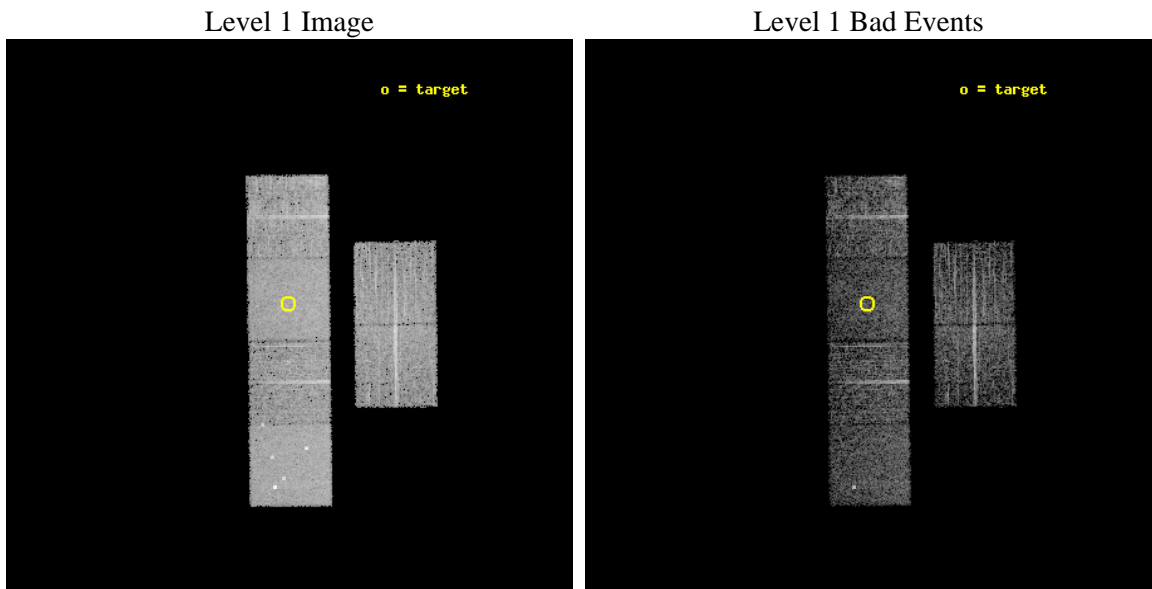
seq_num	400127	Sequence number
obs_id	1914	Observation id
title	X-RAY BURSTERS WITH LOW PERSISTENT X-RAY LUMINOSITIES	Proposal tit
observer	PROF FRANK VERBUNT	Principal investigator
object	SAX J1752.3-3138	Source name
dtcycle	0	
cycle	P	events from which exps? Prim/Second/Both
ra_targ	268.1	Observer's specified target RA [deg]
dec_targ	-31.628333	Observer's specified target Dec [deg]
ra_nom	268.09743066546	Nominal RA [deg]
dec_nom	-31.660805226186	Nominal Dec [deg]
roll_nom	269.31069529856	Nominal Roll [deg]
revision	3	Processing version of data
ontime	4715.3275512457	Sum of GTIs [s]
livetime	4655.6192345624	Livetime [s]
ontime2	4715.368591249	Sum of GTIs [s]
ontime3	4715.2044312507	Sum of GTIs [s]
ontime5	4715.2865112424	Sum of GTIs [s]
ontime6	4715.245471254	Sum of GTIs [s]
ontime7	4715.3275512457	Sum of GTIs [s]
ontime8	4711.9224010855	Sum of GTIs [s]
l2events	50835	Number of level 2 events



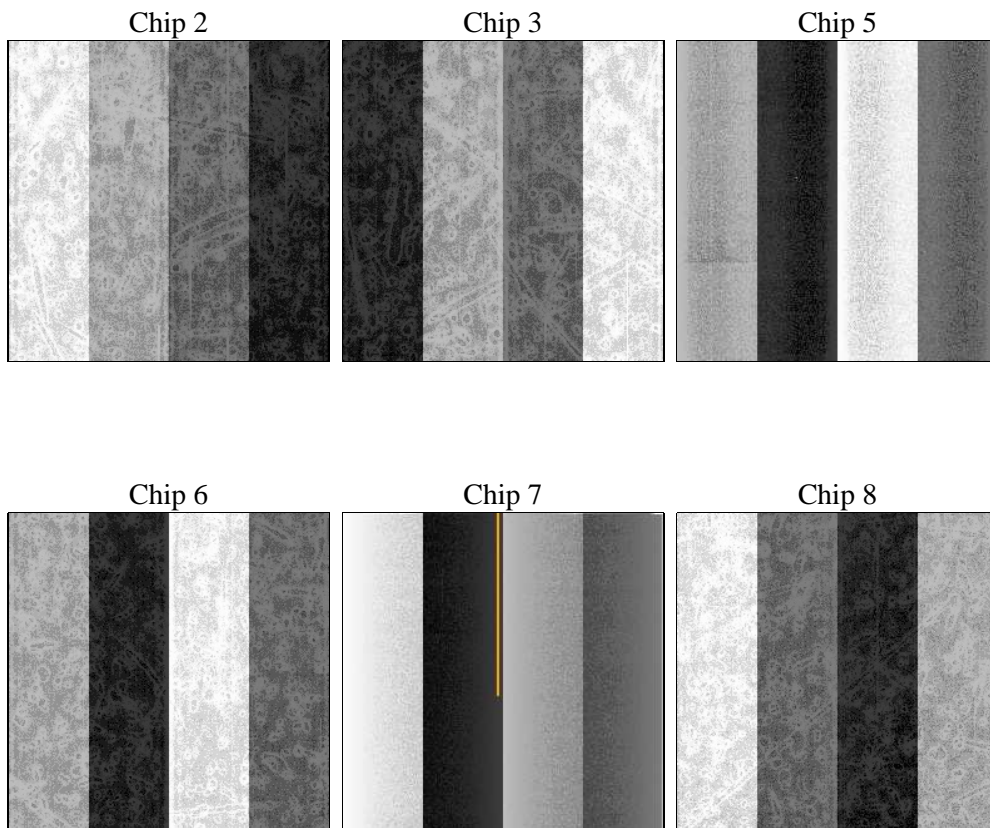
2 OBI

2.1 OBI

2.1.1 Images



2.1.2 Bias



2.1.3 Parameters

obi_num	0	Obi number	sched_exp_time	4767.360000	[s] Scheduled observation exposure time
ascdsver	8.4.5	Processing system revision	ontime	4715.3275512457	Sum of GTIs [s]
caldsver	4.5.1.1	 	ontime2	4715.368591249	Sum of GTIs [s]
date	2012-09-24T10:41:13	Date and time of file creation	ontime3	4715.2044312507	Sum of GTIs [s]
revision	3	Processing version of data	ontime5	4715.2865112424	Sum of GTIs [s]
			ontime6	4715.245471254	Sum of GTIs [s]
			ontime7	4715.3275512457	Sum of GTIs [s]
			ontime8	4711.9224010855	Sum of GTIs [s]
			l1events	221778	Number of level 1 events

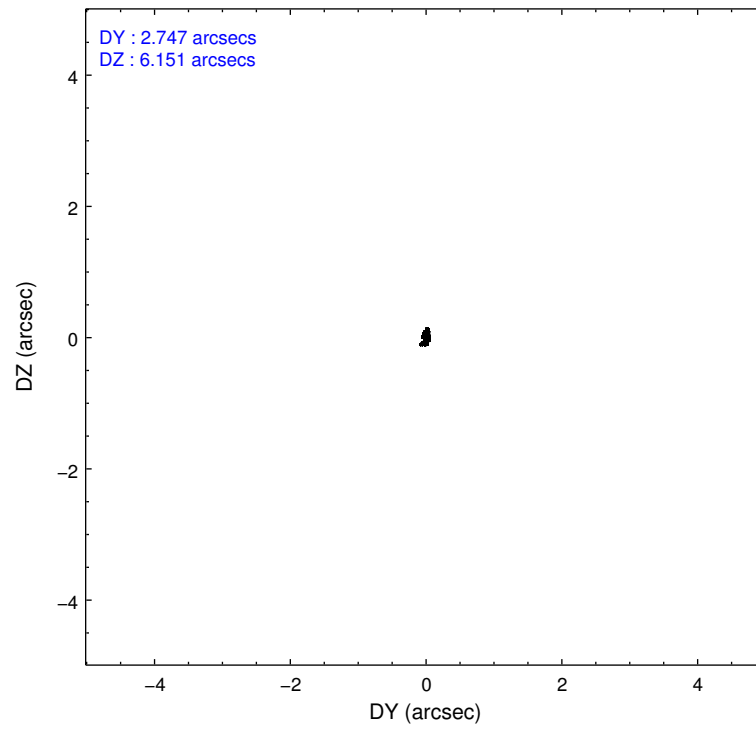
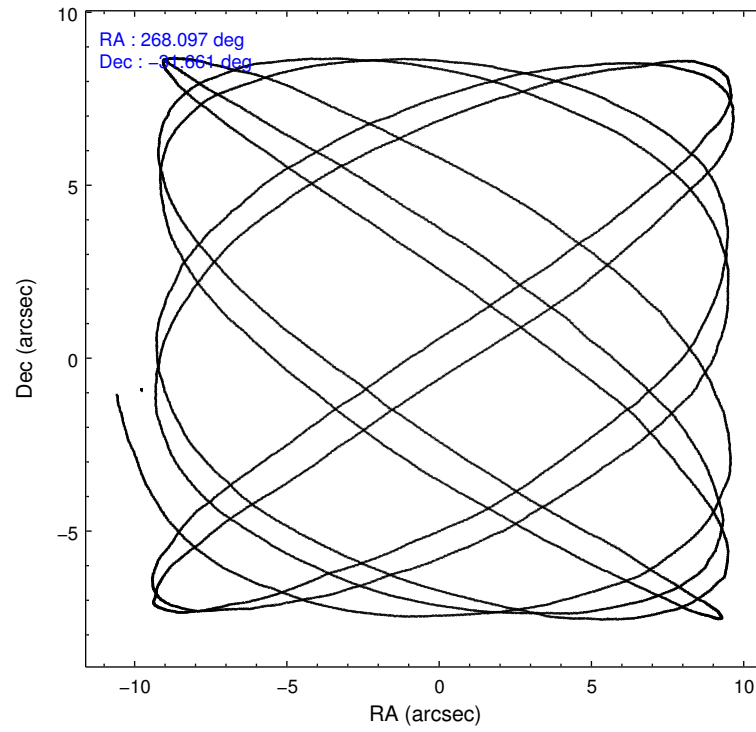
2.1.4 Events

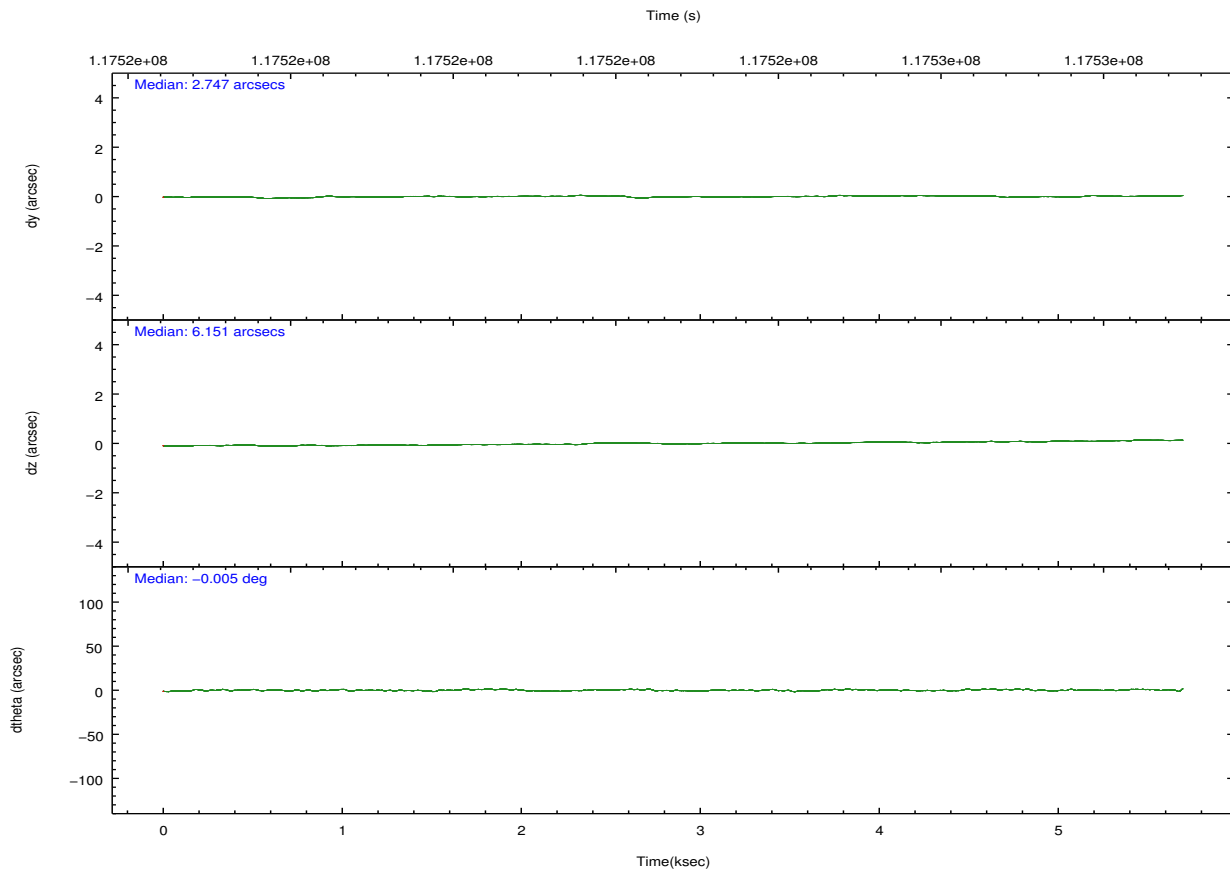
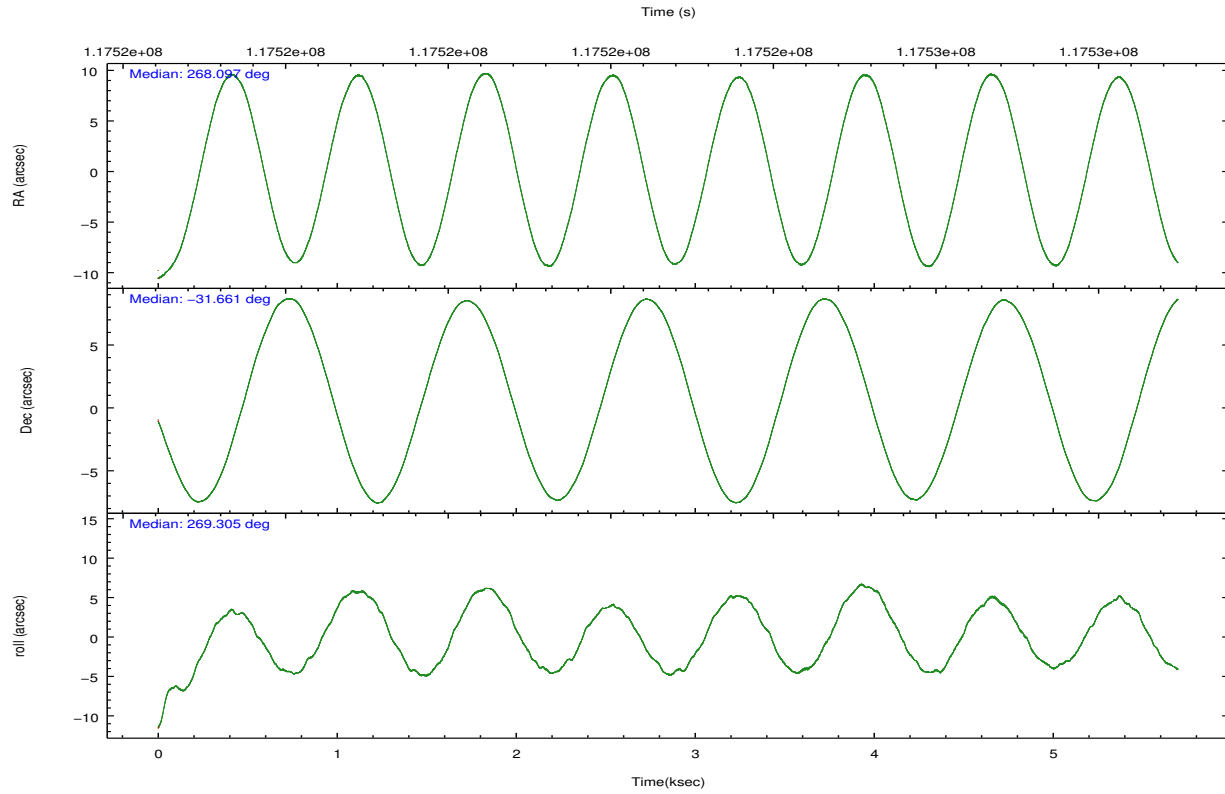
	ccd 2	ccd 3	ccd 5	ccd 6	ccd 7	ccd 8		ccd 2	ccd 3	ccd 5	ccd 6	ccd 7	ccd 8
level 1 events	31587	31786	46599	31763	40392	39651	grade 0 events	1714	1828	3849	1961	1677	3040
rejected events	27803	27894	24183	27573	23079	31241		5%	5%	8%	6%	4%	7%
rejected %	88%	87%	51%	86%	57%	78%	grade 1 events	18	17	470	14	37	30
								0%	0%	1%	0%	0%	0%
							grade 2 events	760	730	6318	744	3561	1770
								2%	2%	13%	2%	8%	4%
							grade 3 events	322	361	944	328	1595	756
								1%	1%	2%	1%	3%	1%
							grade 4 events	357	338	903	404	1573	725
								1%	1%	1%	1%	3%	1%
							grade 5 events	1107	1221	3198	1370	3789	1594
								3%	3%	6%	4%	9%	4%
							grade 6 events	633	637	10428	758	8916	2128
								2%	2%	22%	2%	22%	5%
							grade 7 events	26676	26654	20489	26184	19244	29608
								84%	83%	43%	82%	47%	74%

2.2 Compared Parameters

Parameter	Planned	Actual	Parameter	Planned	Actual
Instrument	ACIS	ACIS	Obspar format version number	7	7
Detector	ACIS-235678	ACIS-235678	Obspar file type	PREDICTED	ACTUAL
Grating	NONE	NONE	Obspar update status	NONE	UPDATED
Data mode	FAINT	FAINT	Number of optional ACIS chips dropped	0	0
Observation mode	POINTING	POINTING	On-chip summing requested	N	N
[deg] Pointing RA	268.081446	268.0974306654585	Subarray requested	NONE	NONE
[deg] Pointing Dec	-31.637098	-31.66080522618599	Alternating exposures requested	N	N
[deg] Pointing Roll	269.145686	269.3106952985585	[s] Primary exposure time	0.000000	3.2
[mm] SIM focus pos	-0.684267	-0.6828225247311905			
[mm] SIM defocus	0	0.001444936568705701			
[mm] SIM translation stage pos	-190.132523	-190.1425803651734			
[mm] SIM translation stage offset	0	0.01005778216563158			
[s] Observation start time (MET)	117522426.184000	117521096.77705			
Observation start date	2001-09-22T05:06:02	2001-09-22T04:44:56			
[s] Observation end time (MET)	117527194.184000	117527651.65231			
Observation end date	2001-09-22T06:25:30	2001-09-22T06:34:11			
Read mode	TIMED	TIMED			

2.3 Aspect



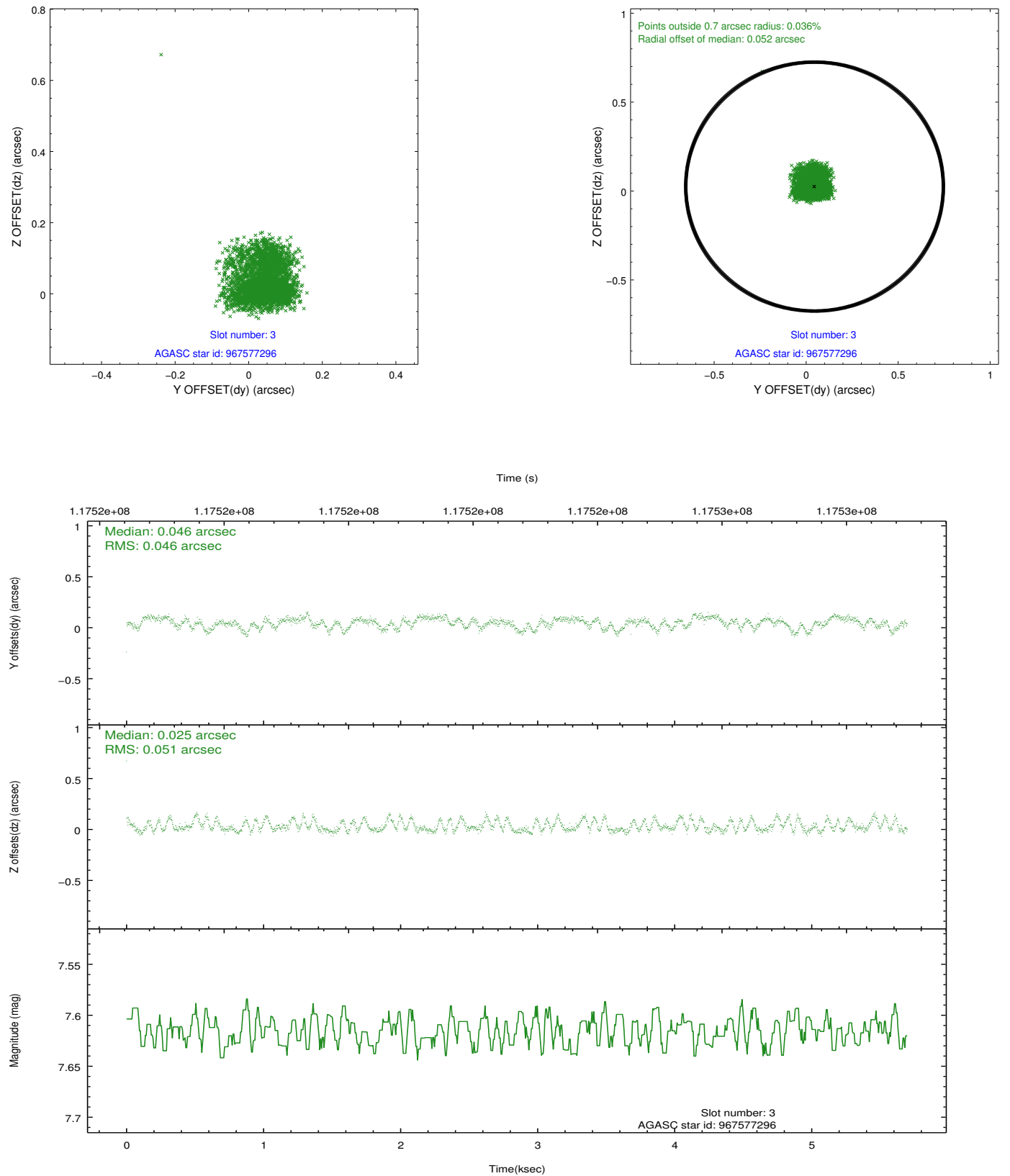


Slot Statistics

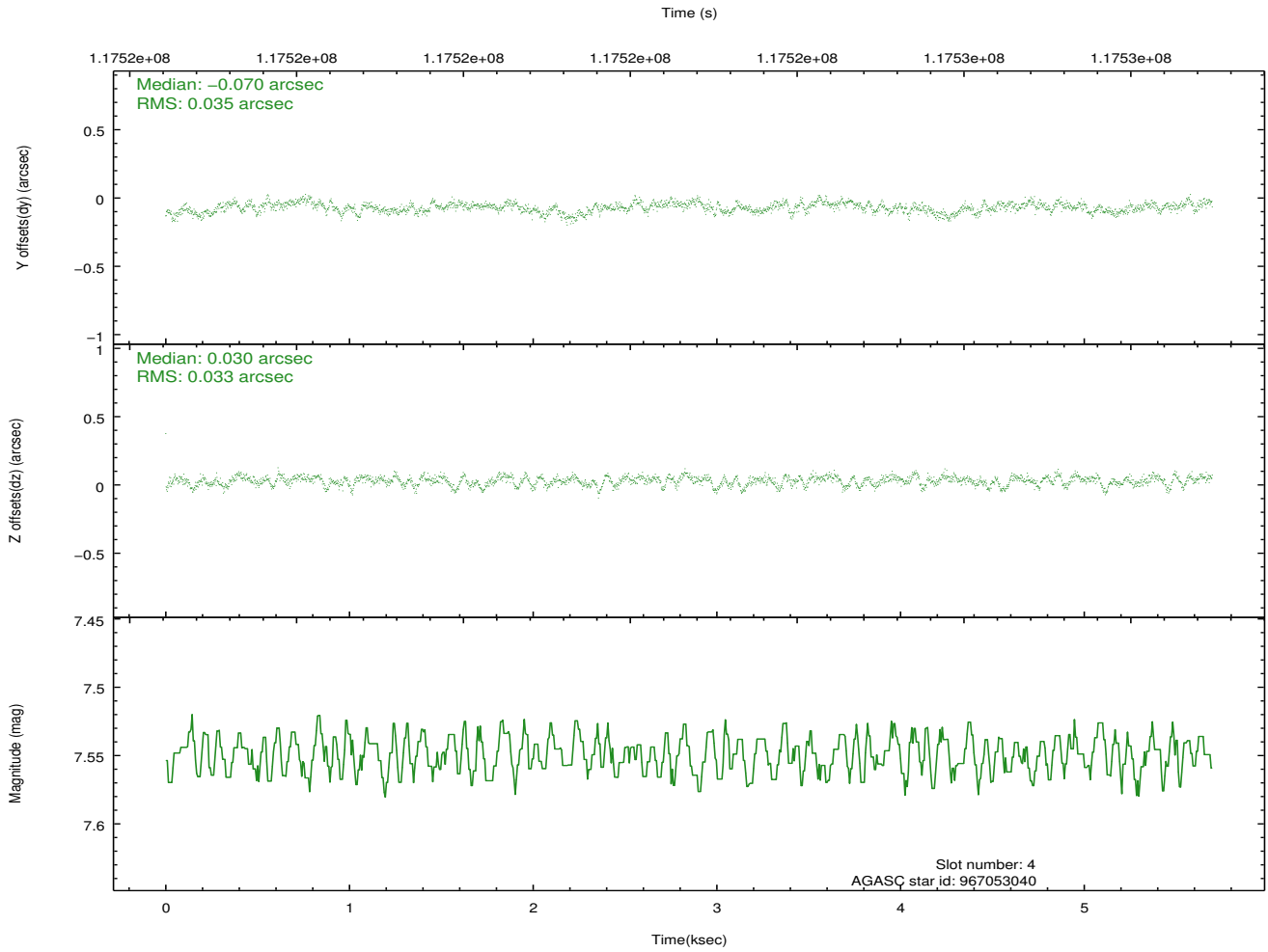
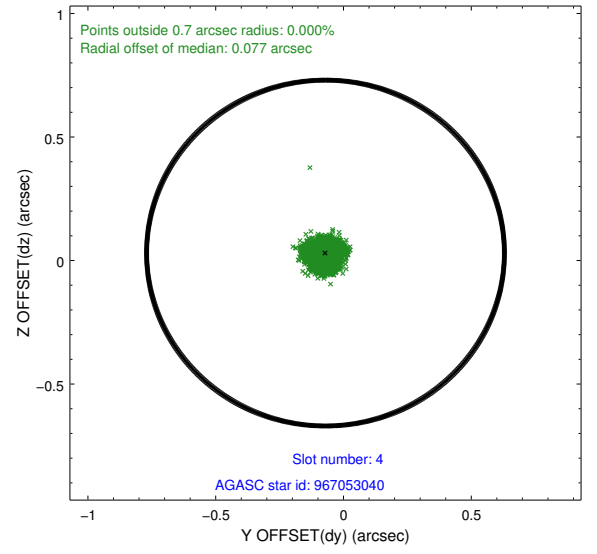
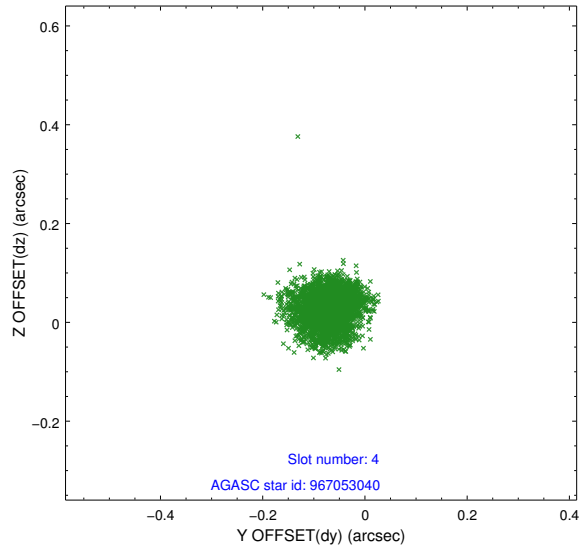
slot	status	id	mag	n_pts	med_dy	med_dz	dr1	dr2	ra	dec	mean_y	mean_z
0	FID	ACIS-S-3	7.36	1389	-0.089	-0.064	0.010	0.016	0.000000	0.000000	57.75	-1856.37
1	FID	ACIS-S-4	7.19	1390	-0.017	0.077	0.009	0.016	0.000000	0.000000	2157.99	180.17
2	FID	ACIS-S-5	7.23	1390	0.077	-0.003	0.009	0.015	0.000000	0.000000	-1806.80	175.01
3	GUIDE	967577296	7.62	2780	0.046	0.025	0.074	0.115	268.868553	-32.000040	1278.80	2423.11
4	GUIDE	967053040	7.55	2780	-0.070	0.030	0.052	0.082	267.898871	-31.413020	-797.68	-571.51
5	GUIDE	967051912	8.46	2779	-0.122	0.050	0.062	0.097	268.273969	-31.339032	-1082.04	576.21
6	GUIDE	966927000	8.16	2779	-0.187	-0.140	0.076	0.118	267.318997	-31.255021	-1332.94	-2366.11
7	GUIDE	967573664	9.23	2778	0.336	0.033	0.111	0.170	267.778533	-32.307665	2428.40	-885.63

2.4 Star Slots

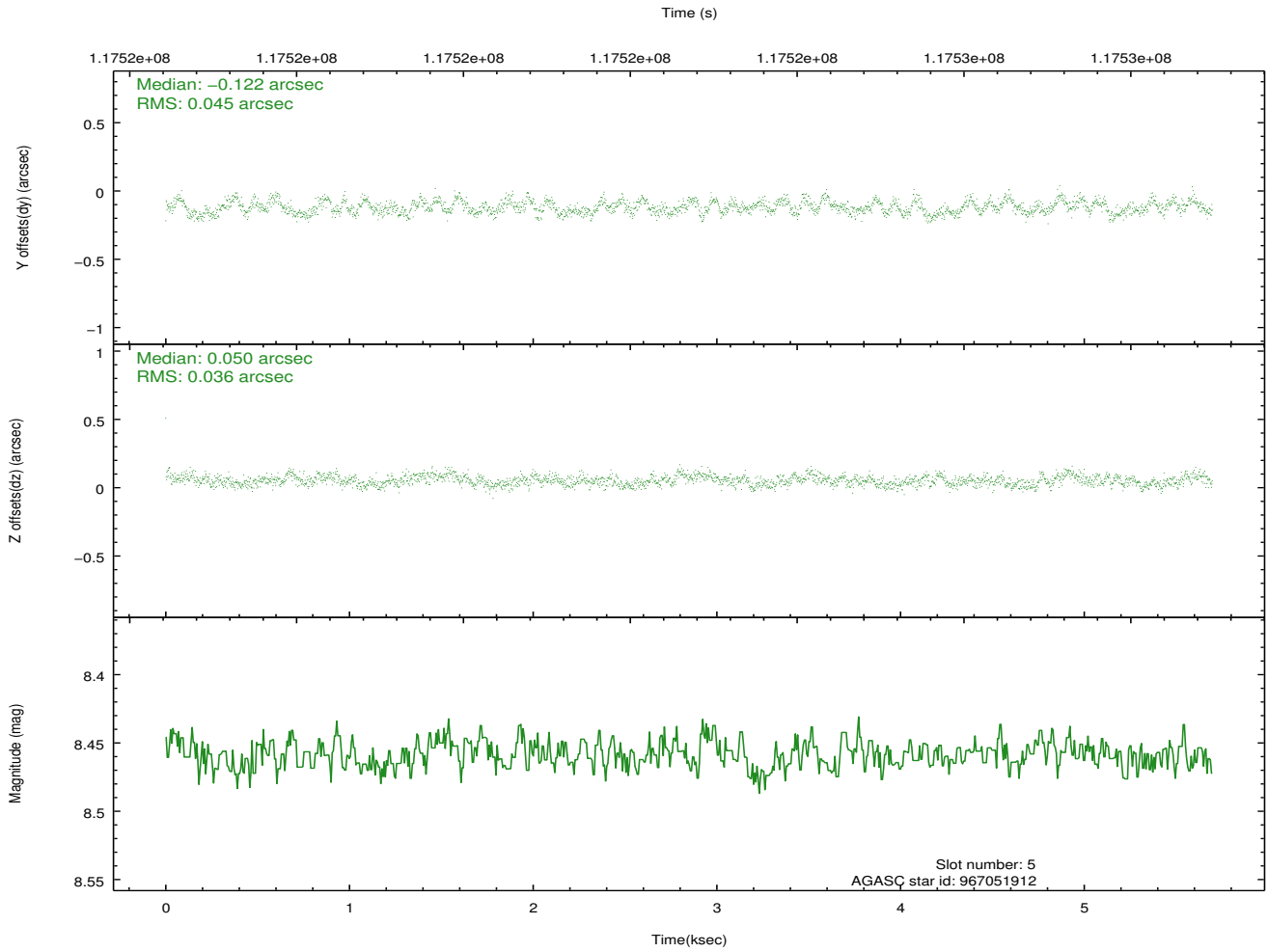
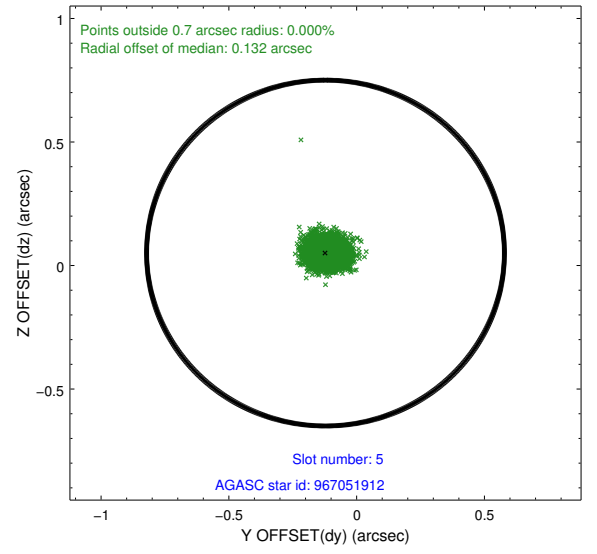
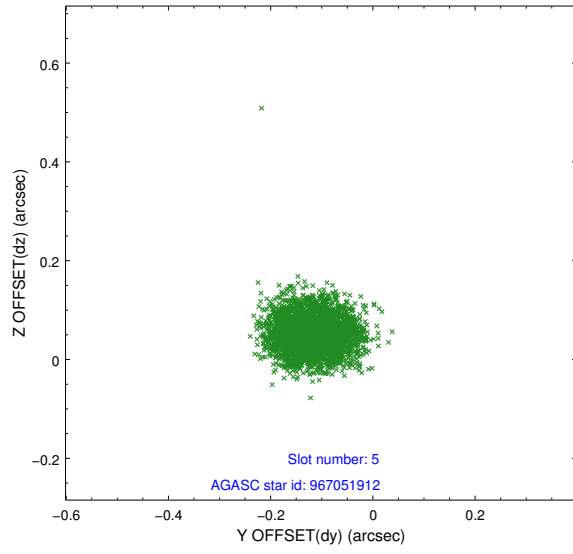
2.4.1 Slot 3



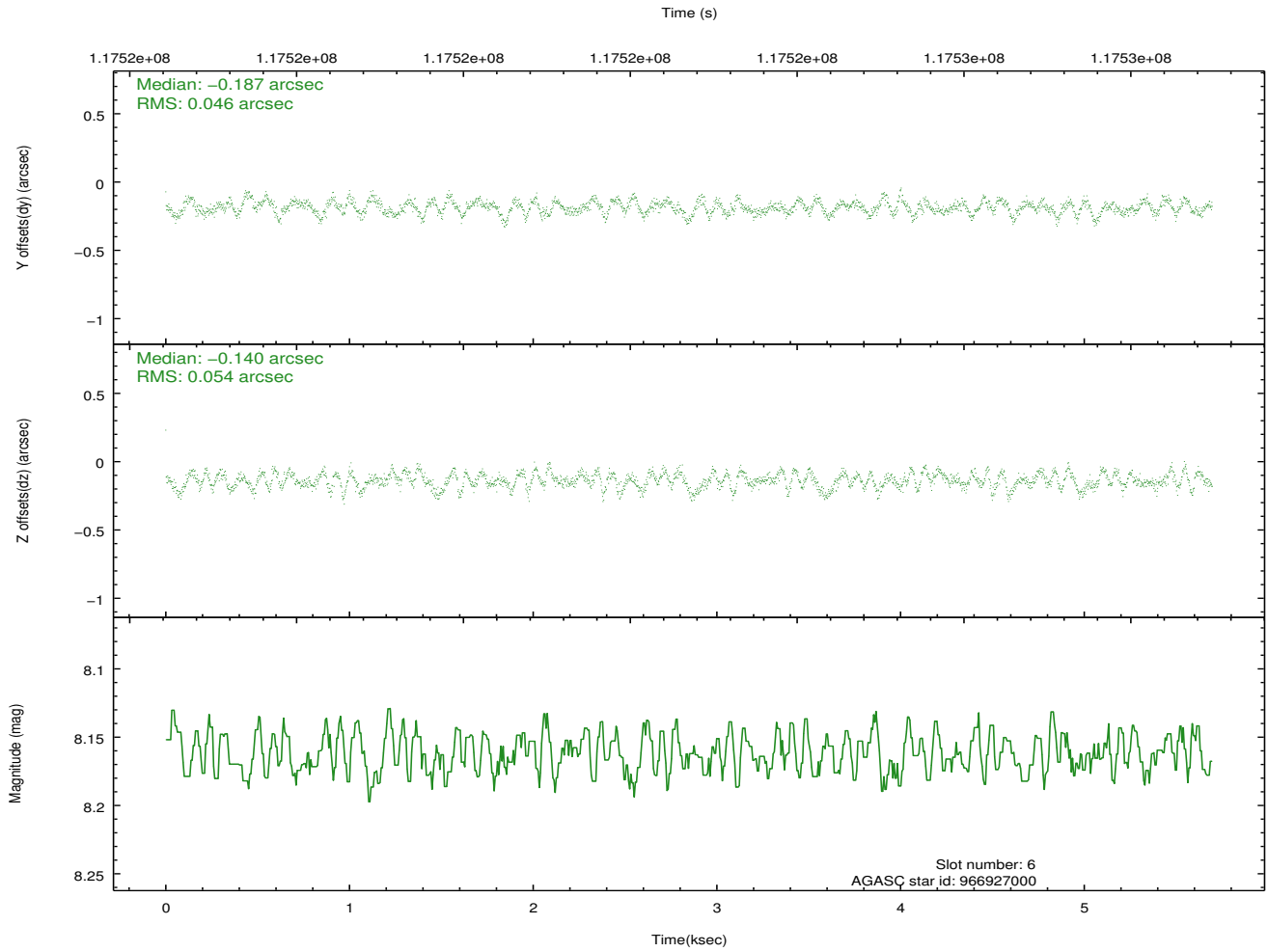
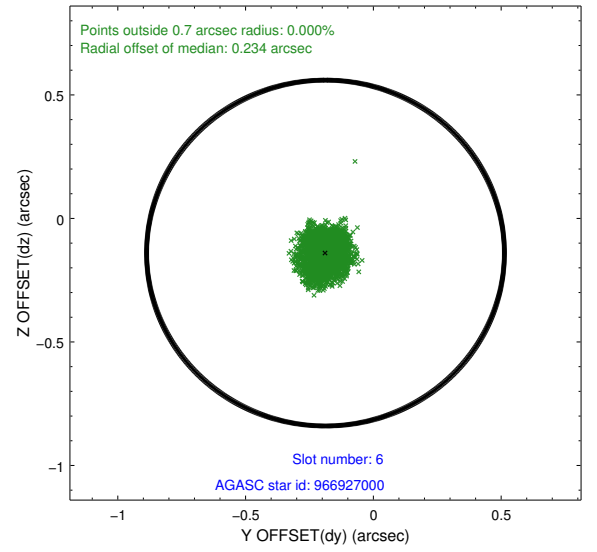
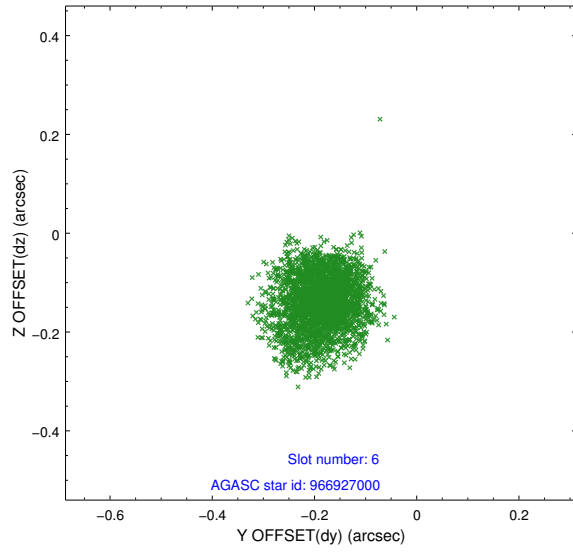
2.4.2 Slot 4



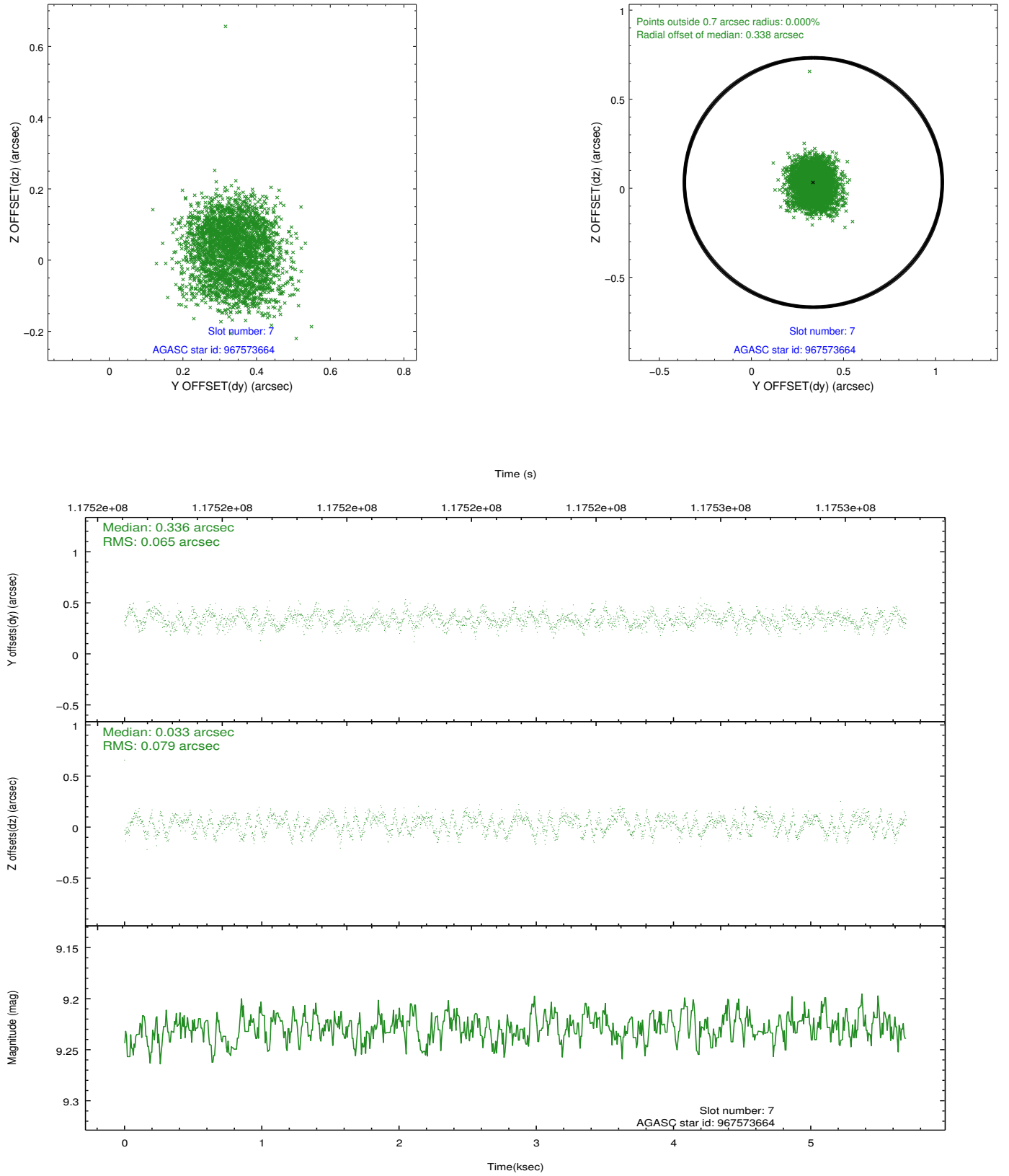
2.4.3 Slot 5



2.4.4 Slot 6

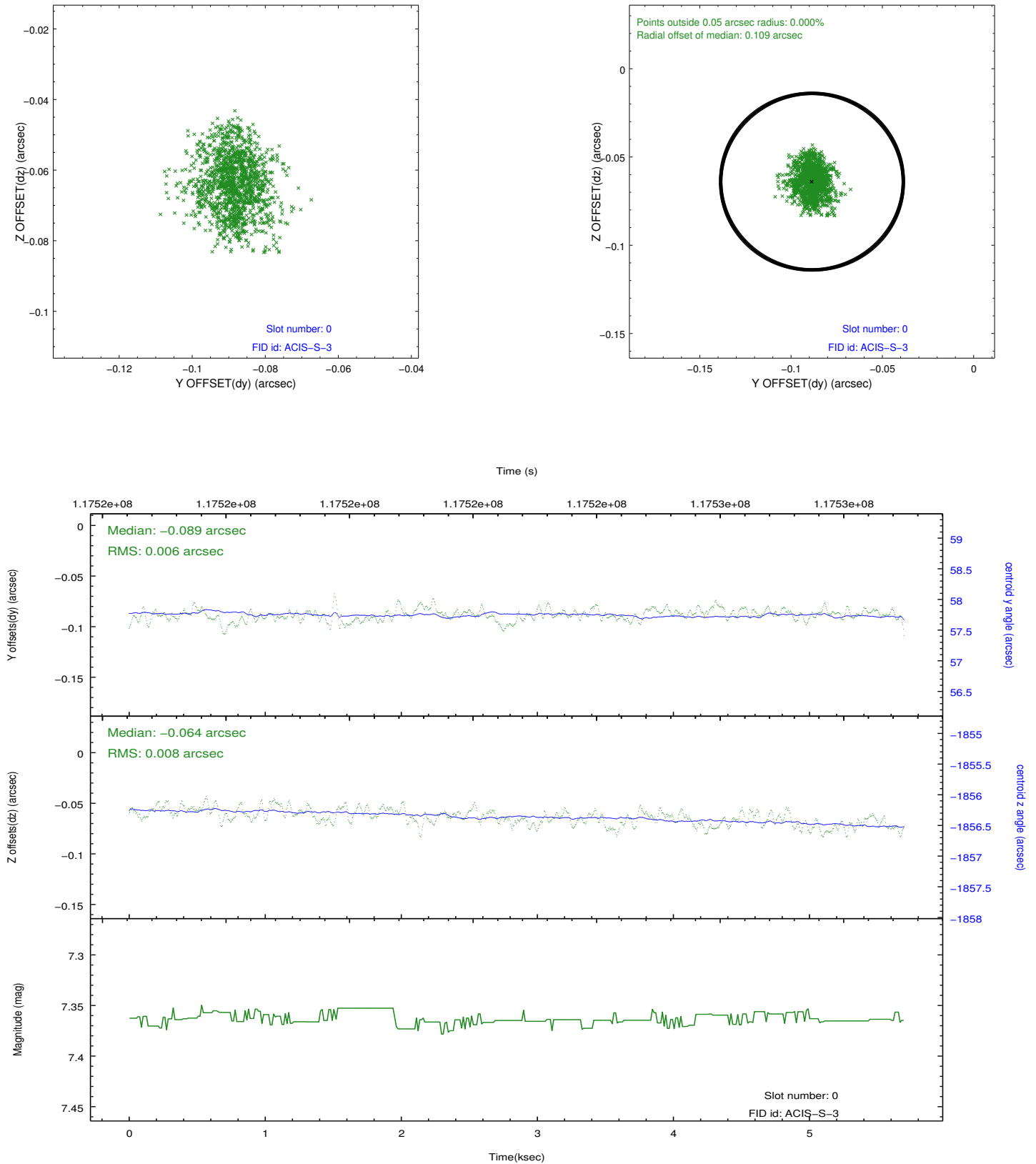


2.4.5 Slot 7

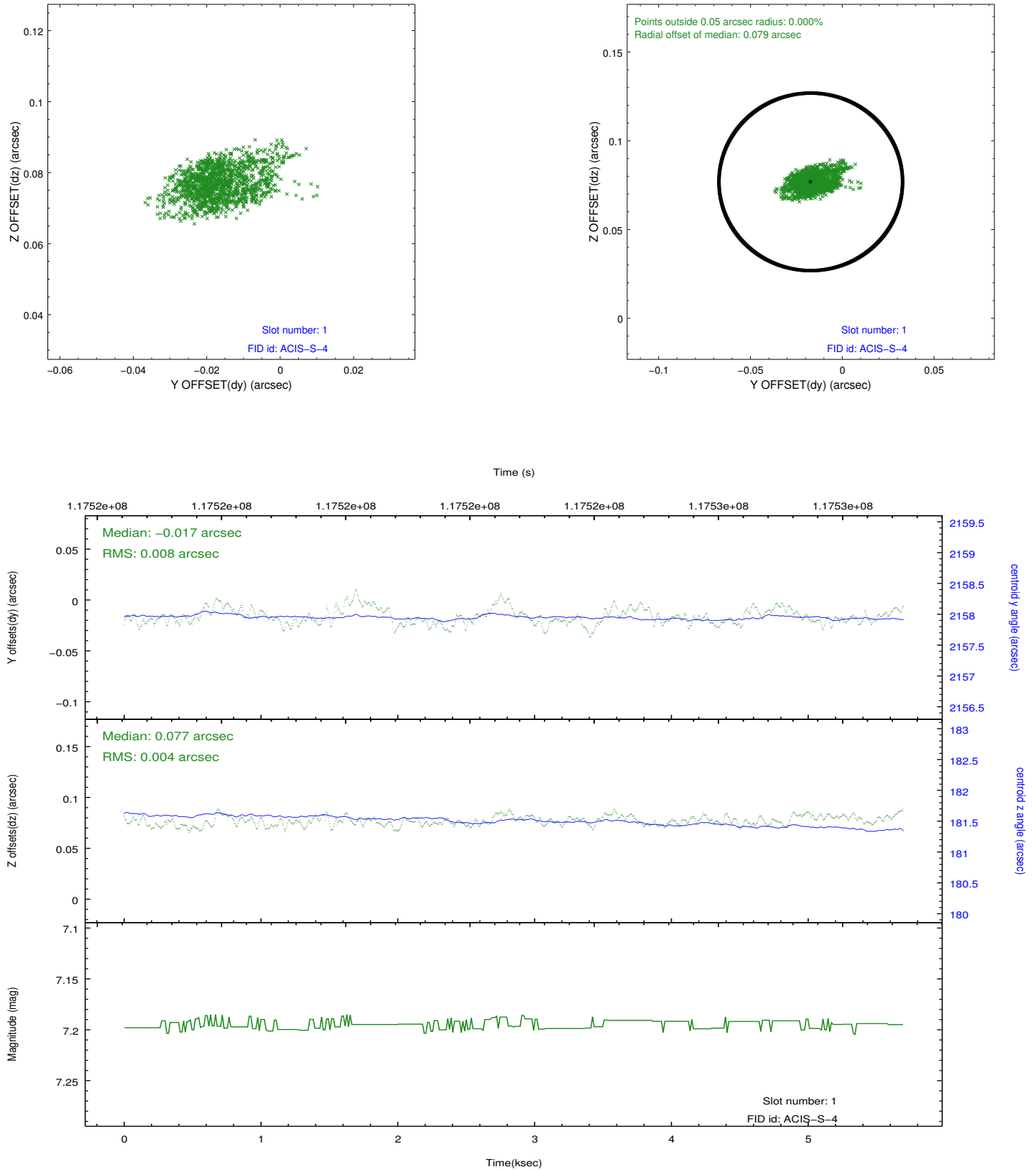


2.5 FID Slots

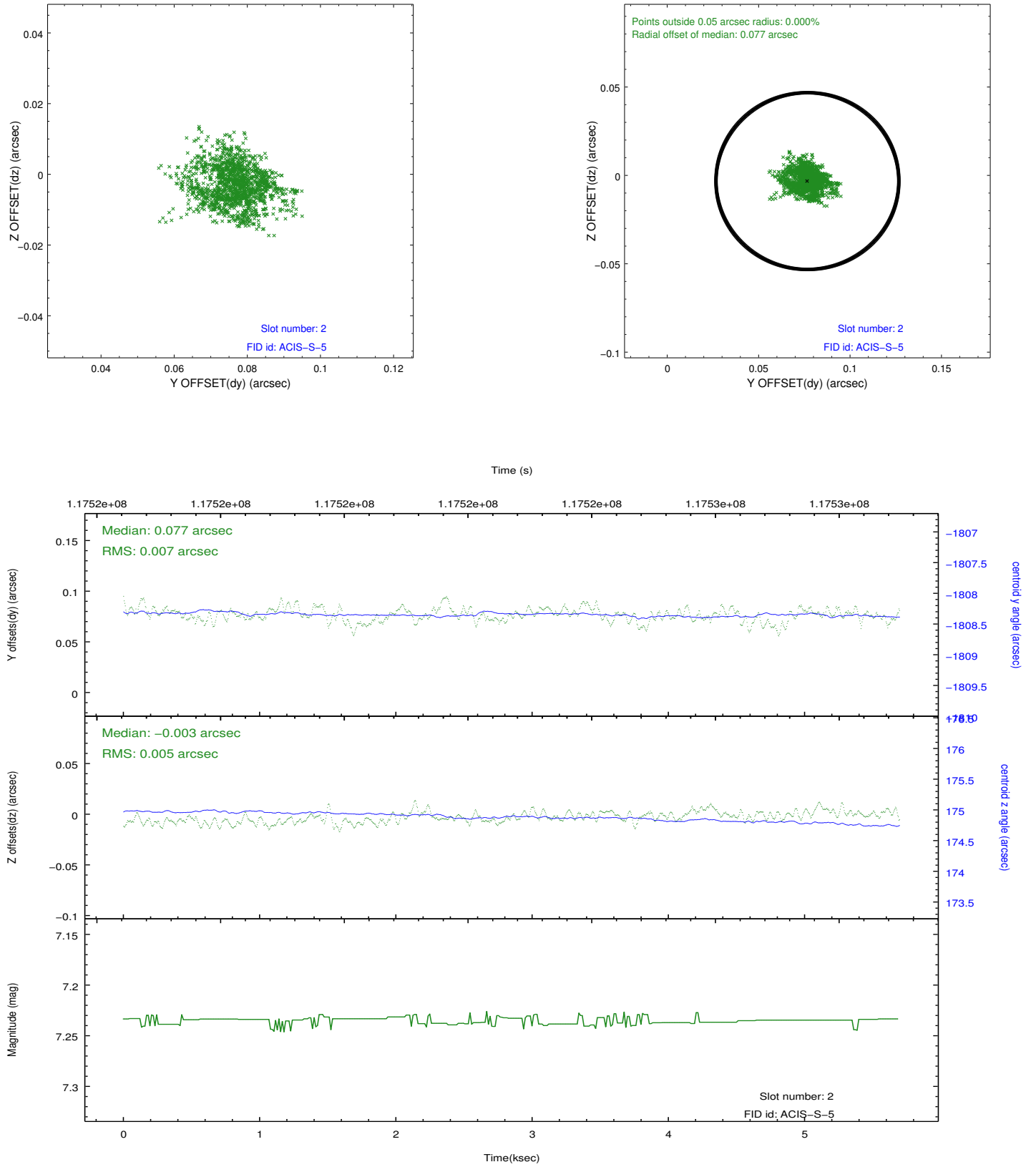
2.5.1 Slot 0



2.5.2 Slot 1



2.5.3 Slot 2



A Summary

A.1 Status

V&V Scientist	Jen Lauer
V&V Date (YYYY-MM-DD)	2012.09.26
V&V Edition	1
V&V Disposition and Status	OK
V&V Charge Time	4.716

A.2 Comments