

V&V Reference Report

L2 ASCDS Version : 7.6.9

Observation 1913 - L2 Version 001
Chandra X-Ray Center

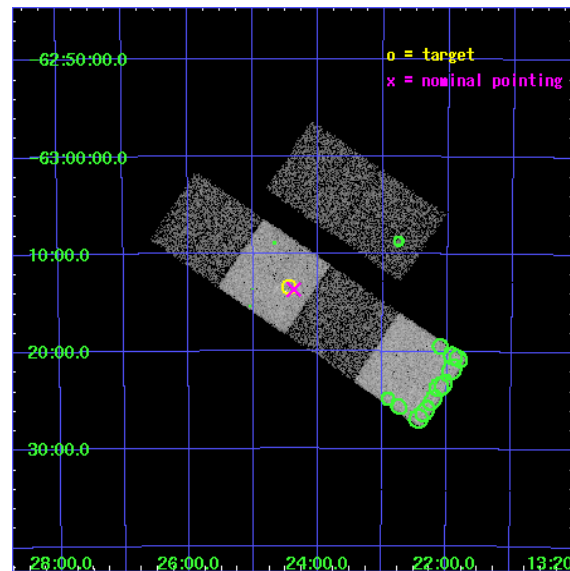
L2 Processing Date : Dec 31 2006

Contents

1	Front	2
2	OBI	3
2.1	OBI	3
2.1.1	Images	3
2.1.2	Bias	3
2.1.3	Parameters	4
2.1.4	Events	4
2.2	Compared Parameters	5
2.3	Aspect	6
2.4	Star Slots	9
2.4.1	Slot 3	9
2.4.2	Slot 4	10
2.4.3	Slot 5	11
2.4.4	Slot 6	12
2.4.5	Slot 7	13
2.5	FID Slots	14
2.5.1	Slot 0	14
2.5.2	Slot 1	15
2.5.3	Slot 2	16
3	Point Sources	17
A	Summary	18
A.1	Status	18
A.2	Comments	18

1 Front

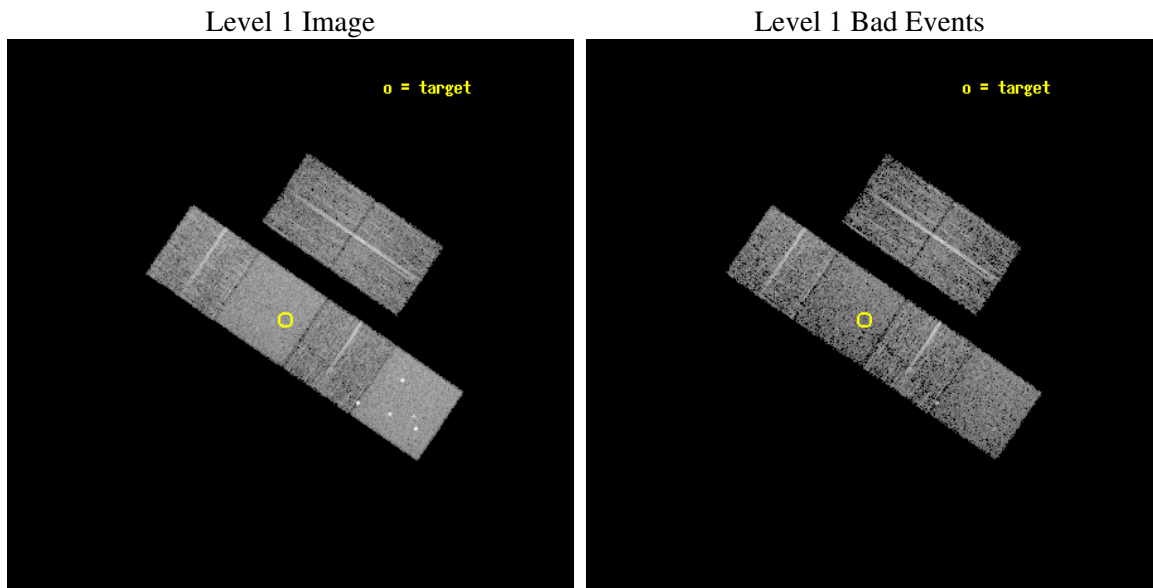
seq_num	400126
obs_id	1913
title	X-RAY BURSTERS WITH LOW PERSISTENT X-RAY LUMINOSITIES
observer	PROF FRANK VERBUNT
object	SAX J1324.5-6313
dtcycle	0
cycle	P
ra_targ	201.1125
dec_targ	-63.223889
ra_nom	201.09271728102
dec_nom	-63.227878611135
roll_nom	214.25784903186
revision	2
ontime	5097.6000047475
livetime	5033.0511240812
ontime2	5097.6000047475
ontime3	5097.6000047475
ontime5	5097.6000047475
ontime6	5097.6000047475
ontime7	5097.6000047475
ontime8	5097.6000047475
l2events	65285



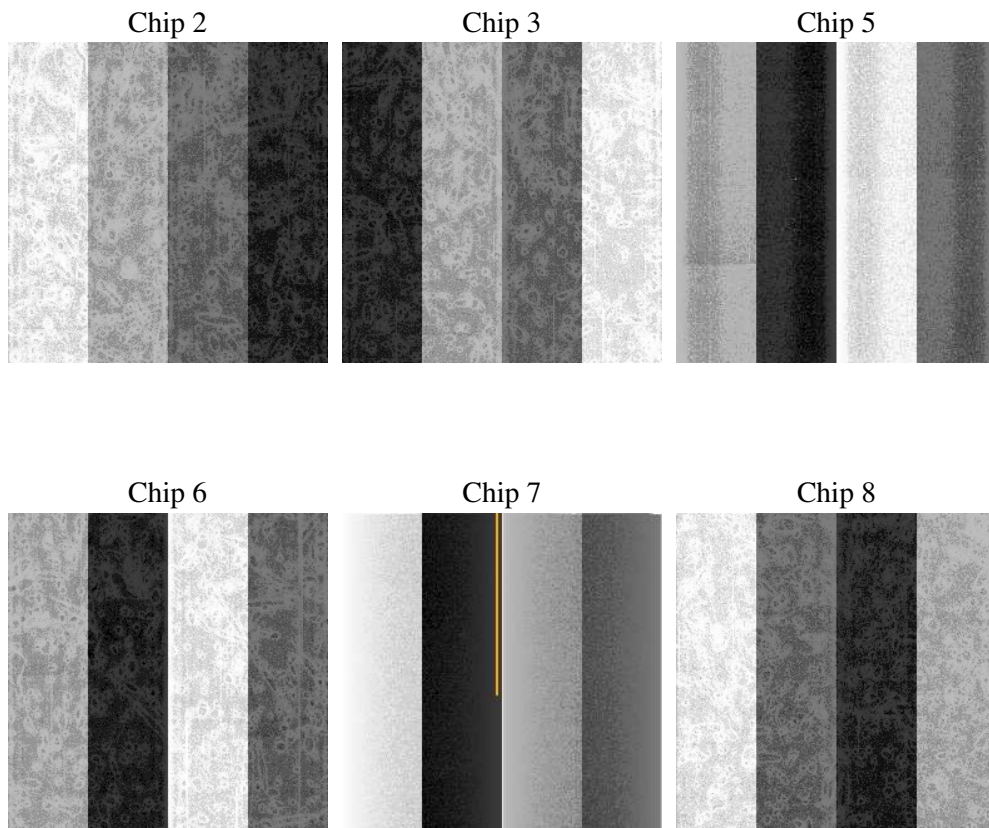
2 OBI

2.1 OBI

2.1.1 Images



2.1.2 Bias



2.1.3 Parameters

obi_num	0
ascdsver	7.6.9
caldbver	3.2.4
date	2006-12-31T06:09:10
revision	2

sched_exp_time	5152.846000
ontime	5104.5709218979
ontime2	5104.5709218979
ontime3	5104.5709218979
ontime5	5104.5709218979
ontime6	5104.5709218979
ontime7	5104.5709218979
ontime8	5104.5709218979
l1events	249514

2.1.4 Events

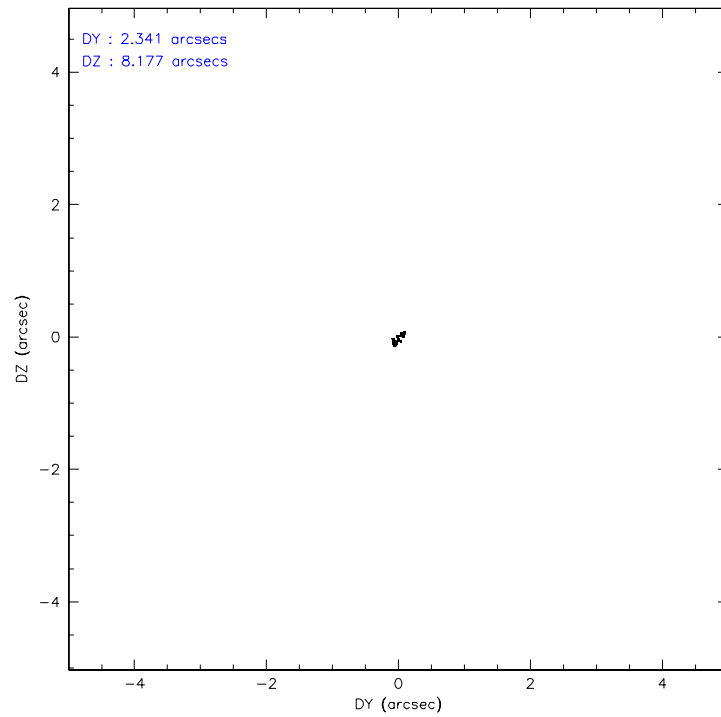
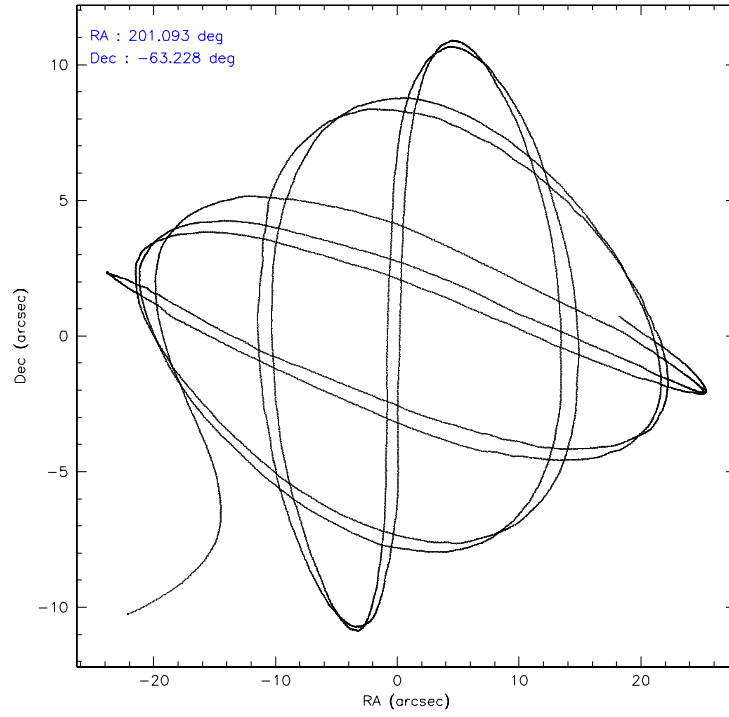
	ccd 2	ccd 3	ccd 5	ccd 6	ccd 7	ccd 8
level 1 events	34914	32164	56870	34537	49137	41892
rejected events	30438	27765	27040	29755	26291	32835
rejected %	87%	86%	47%	86%	53%	78%

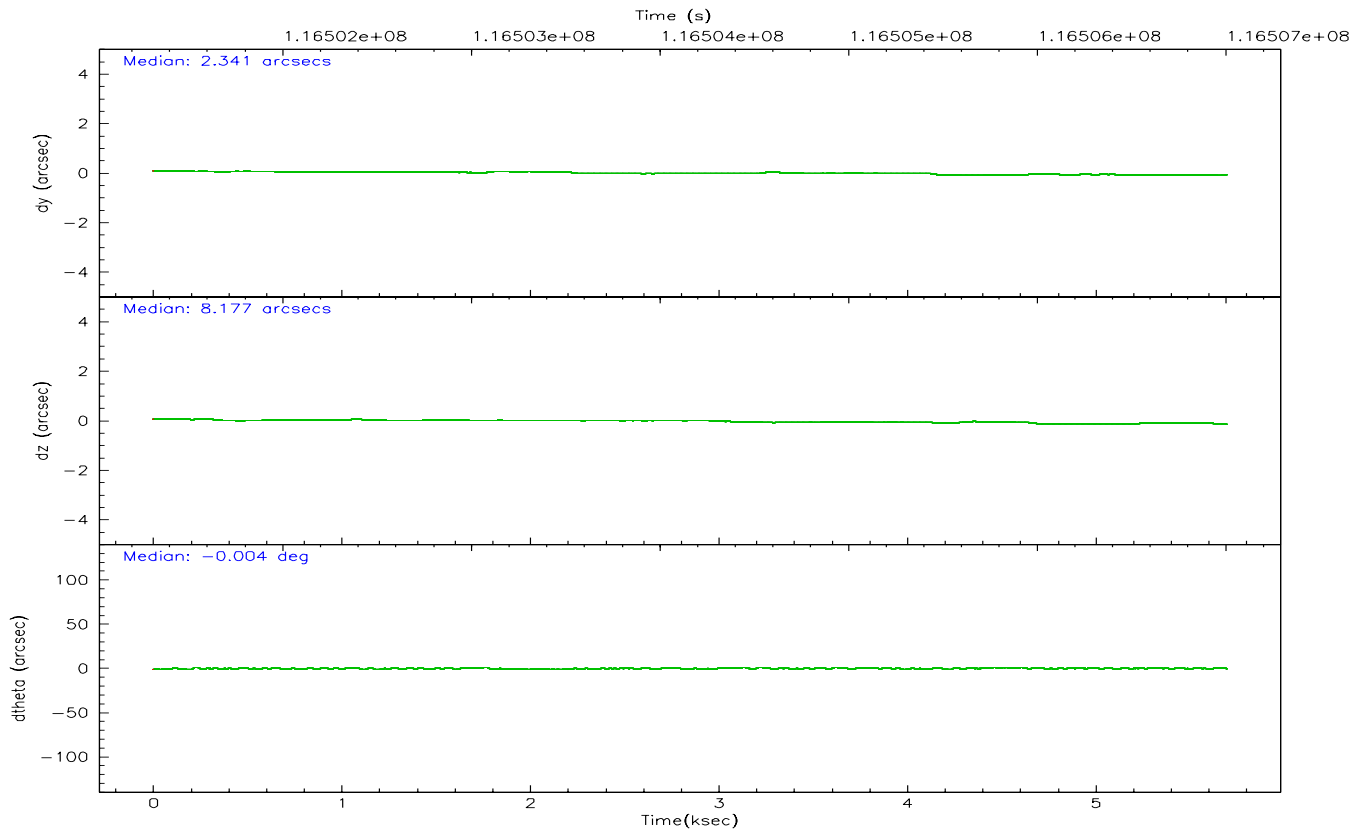
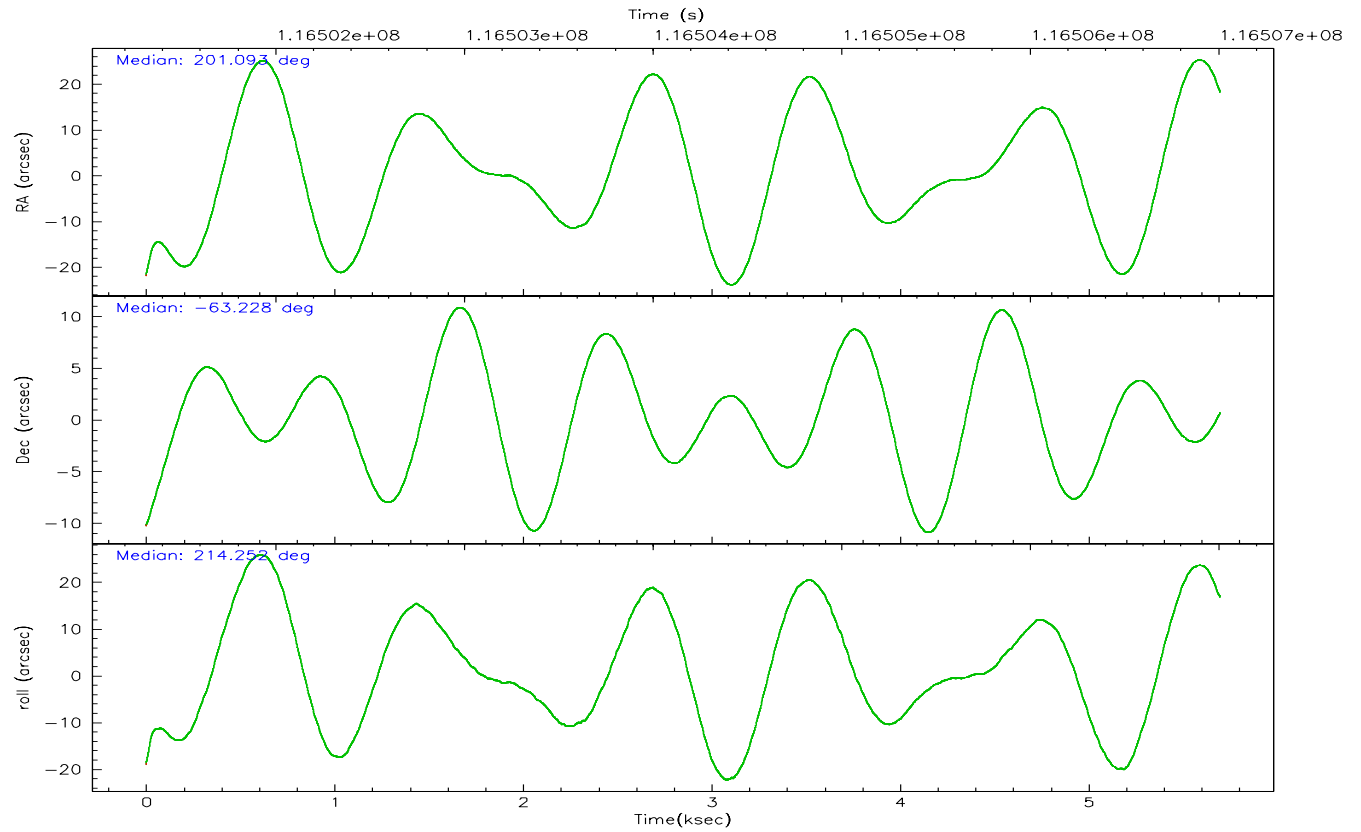
	ccd 2	ccd 3	ccd 5	ccd 6	ccd 7	ccd 8
grade 0 events	2194	2184	4656	2319	2101	3235
	6%	6%	8%	6%	4%	7%
grade 1 events	16	18	165	13	23	28
	0%	0%	0%	0%	0%	0%
grade 2 events	874	767	8925	886	5460	1832
	2%	2%	15%	2%	11%	4%
grade 3 events	357	389	982	401	1399	965
	1%	1%	1%	1%	2%	2%
grade 4 events	408	385	1019	420	1318	872
	1%	1%	1%	1%	2%	2%
grade 5 events	1127	1188	2495	1381	2889	1866
	3%	3%	4%	3%	5%	4%
grade 6 events	650	682	14274	760	12590	2154
	1%	2%	25%	2%	25%	5%
grade 7 events	29288	26551	24354	28357	23357	30940
	83%	82%	42%	82%	47%	73%

2.2 Compared Parameters

Parameter	Planned	Actual	Parameter	Planned	Actual
Instrument	ACIS	ACIS	Obspar format version number	6	6
Detector	ACIS-235678	ACIS-235678	Obspar file type	PREDICTED	ACTUAL
Grating	NONE	NONE	Obspar update status	NONE	UPDATED
Data mode	FAINT	FAINT	Number of optional ACIS chips dropped	0	0
Observation mode	POINTING	POINTING	On-chip summing requested	N	N
Pointing RA	201.118398	201.0927172810165	Subarray requested	NONE	NONE
Pointing Dec	-63.203155	-63.22787861113494	Alternating exposures requested	N	N
Pointing Roll	214.124155	214.2578490318562	Primary exposure time	0.000000	3.2
SIM focus pos (mm)	-0.684267	-0.6828225247311905			
SIM defocus (mm)	0	0.001444936568705701			
SIM translation stage pos (mm)	-190.132523	-190.1400660498719			
SIM translation stage offset (mm)	0	0.00754346686406393			
Observation start time	116501856.184000	116500721.5367			
Observation start date	2001-09-10T09:36:32	2001-09-10T09:18:41			
Observation end time	116507009.184000	116507323.56196			
Observation end date	2001-09-10T11:02:25	2001-09-10T11:08:43			
Read mode	TIMED	TIMED			

2.3 Aspect



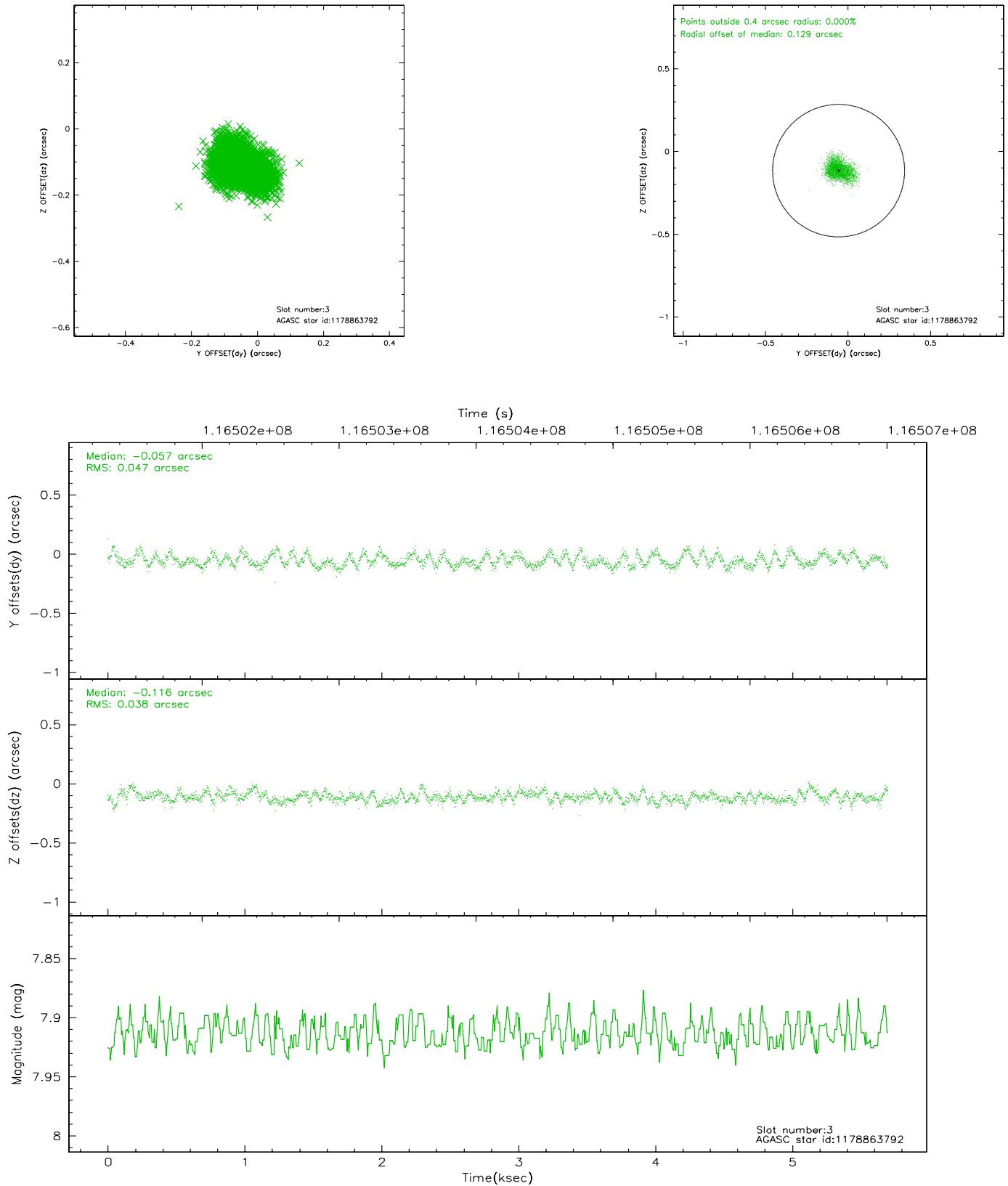


Slot Statistics

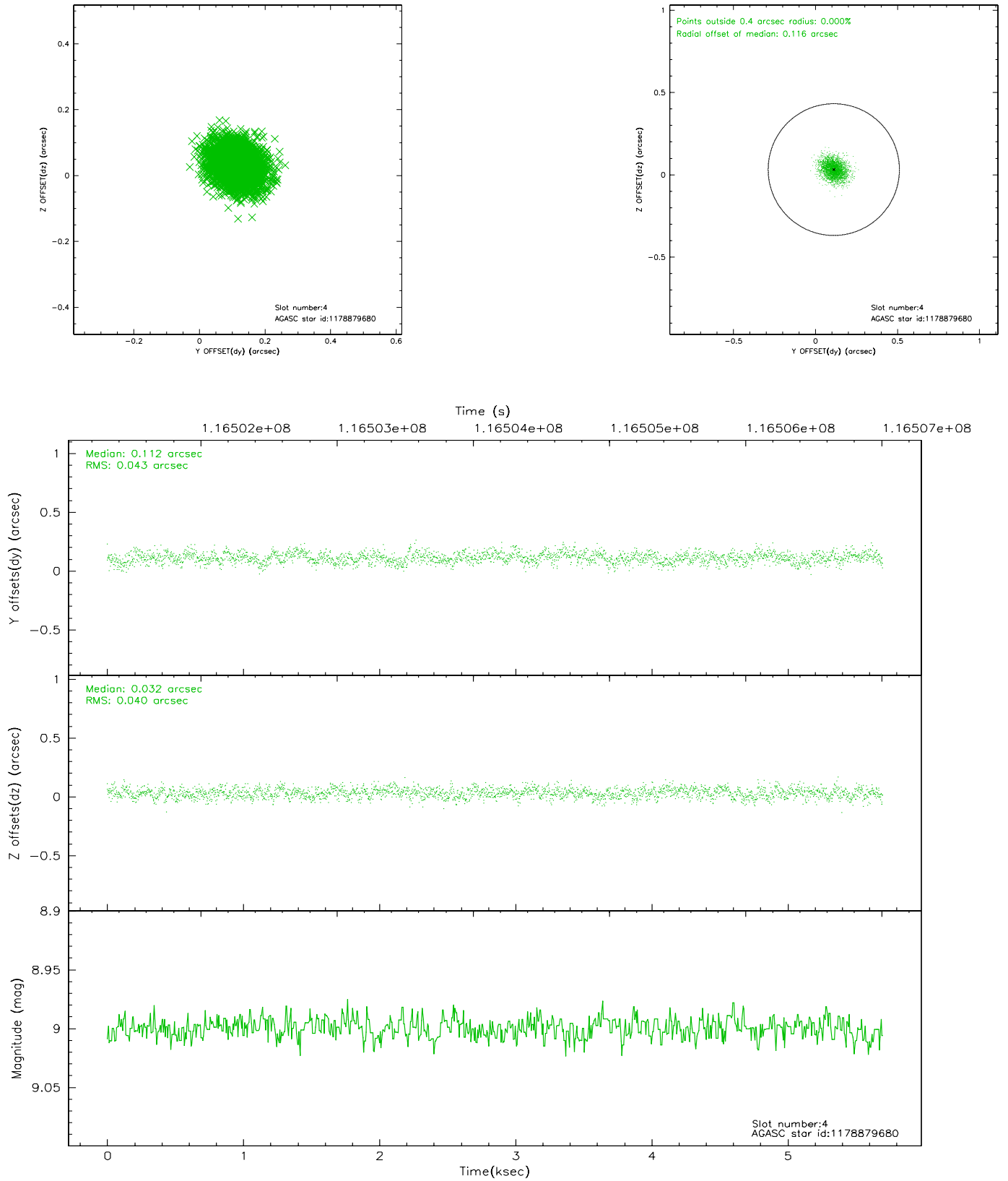
slot	status	id	mag	n_pts	med_dy	med_dz	dr1	dr2	ra	dec	mean_y	mean_z
0	FID	ACIS-S-2	7.11	1391	0.000	0.011	0.007	0.011	0.000000	0.000000	-754.97	-1729.34
1	FID	ACIS-S-4	7.19	1391	-0.097	-0.003	0.005	0.009	0.000000	0.000000	2157.74	178.04
2	FID	ACIS-S-5	7.23	1390	0.065	0.001	0.007	0.011	0.000000	0.000000	-1806.39	172.92
3	GUIDE	1178863792	7.91	2780	-0.057	-0.116	0.065	0.104	200.297104	-62.908227	525.42	-1627.29
4	GUIDE	1178879680	9.00	2777	0.112	0.032	0.063	0.102	200.102028	-63.221800	1411.41	-858.85
5	GUIDE	1178893960	9.04	2779	0.046	-0.024	0.062	0.097	200.420317	-63.658914	1848.88	737.54
6	GUIDE	1179031368	9.59	2781	-0.020	0.046	0.096	0.154	202.097156	-63.583995	-519.96	2024.42
7	GUIDE	1179016008	9.31	2779	-0.080	0.058	0.111	0.176	202.956402	-63.374948	-2082.83	2210.98

2.4 Star Slots

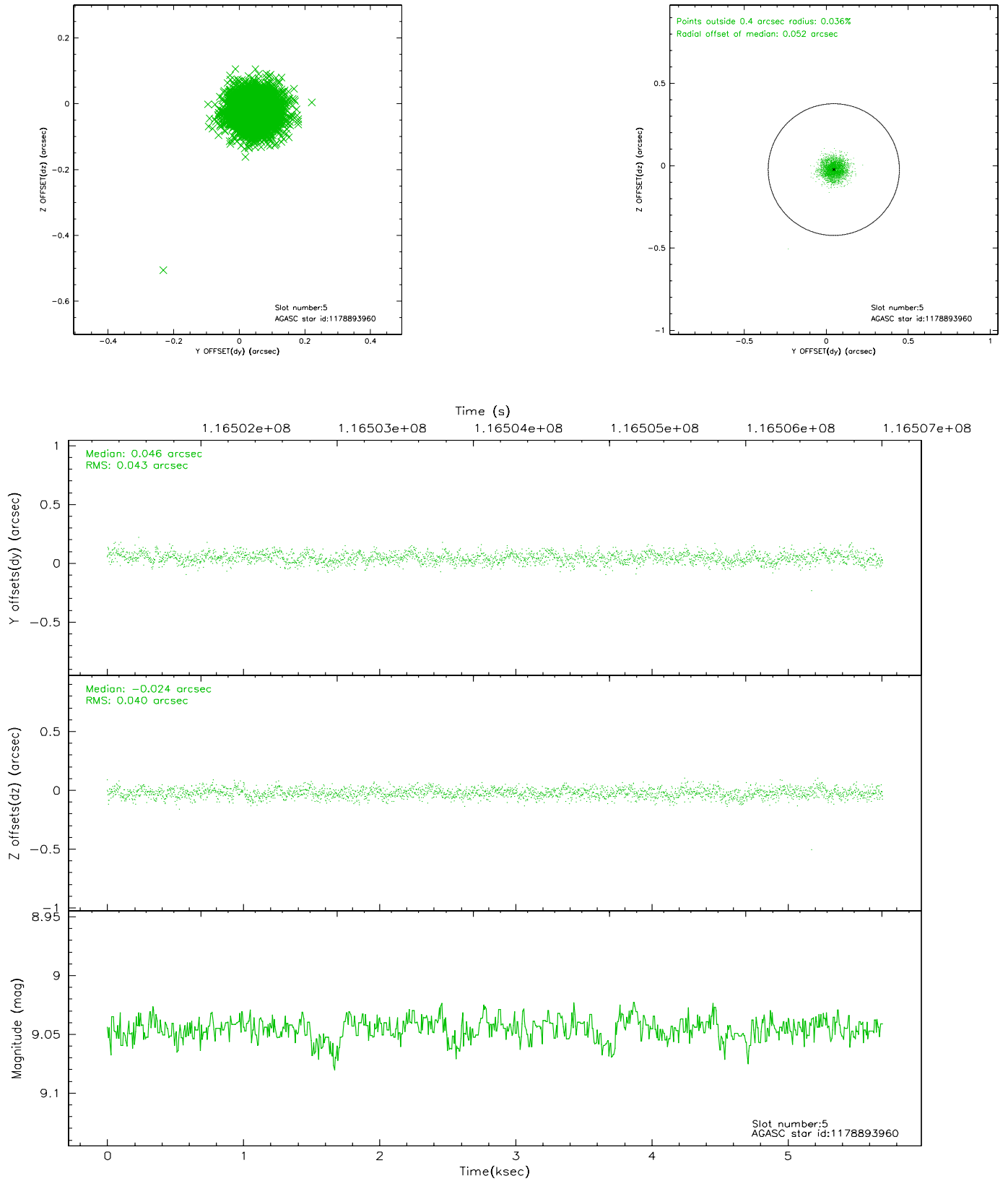
2.4.1 Slot 3



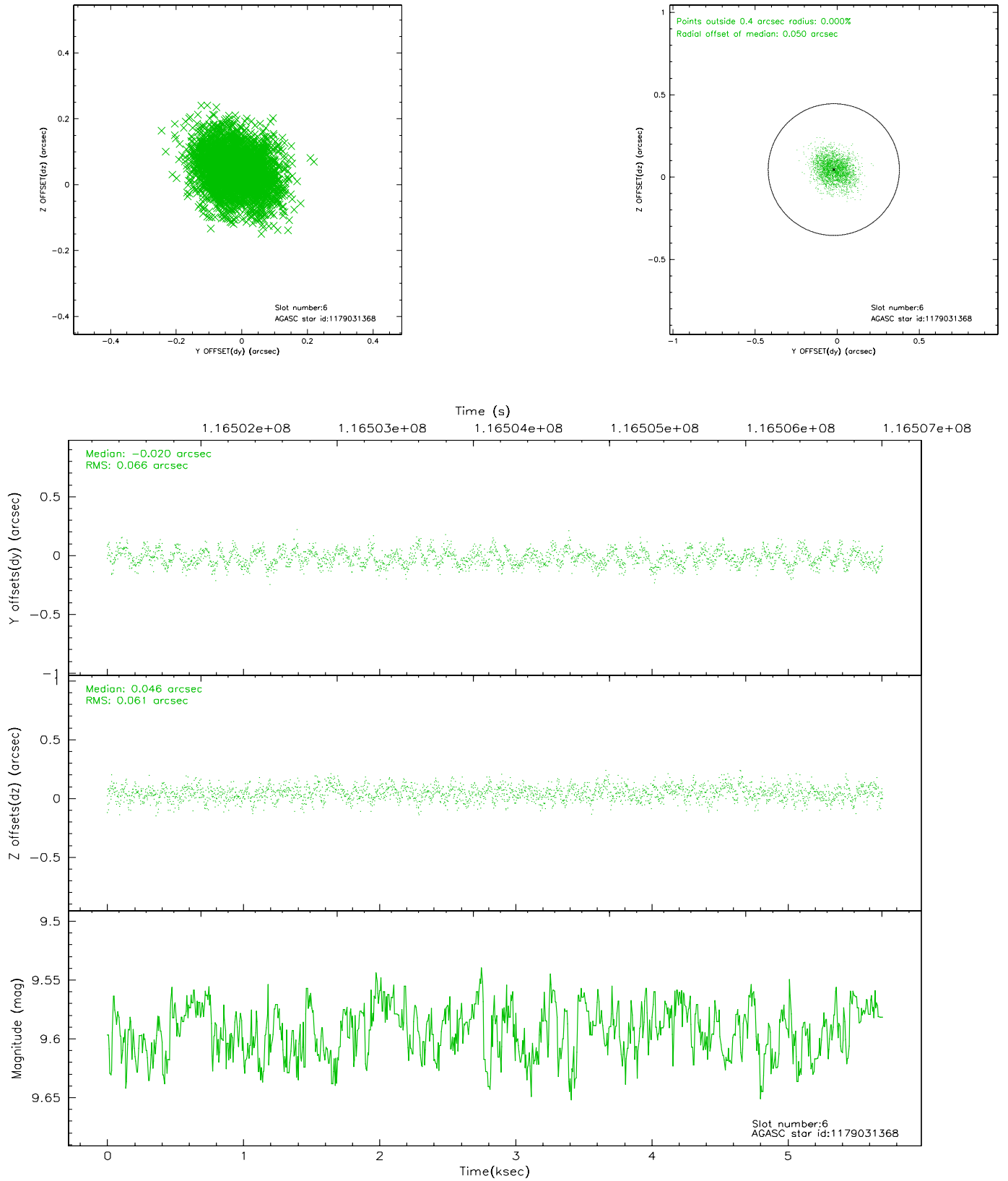
2.4.2 Slot 4



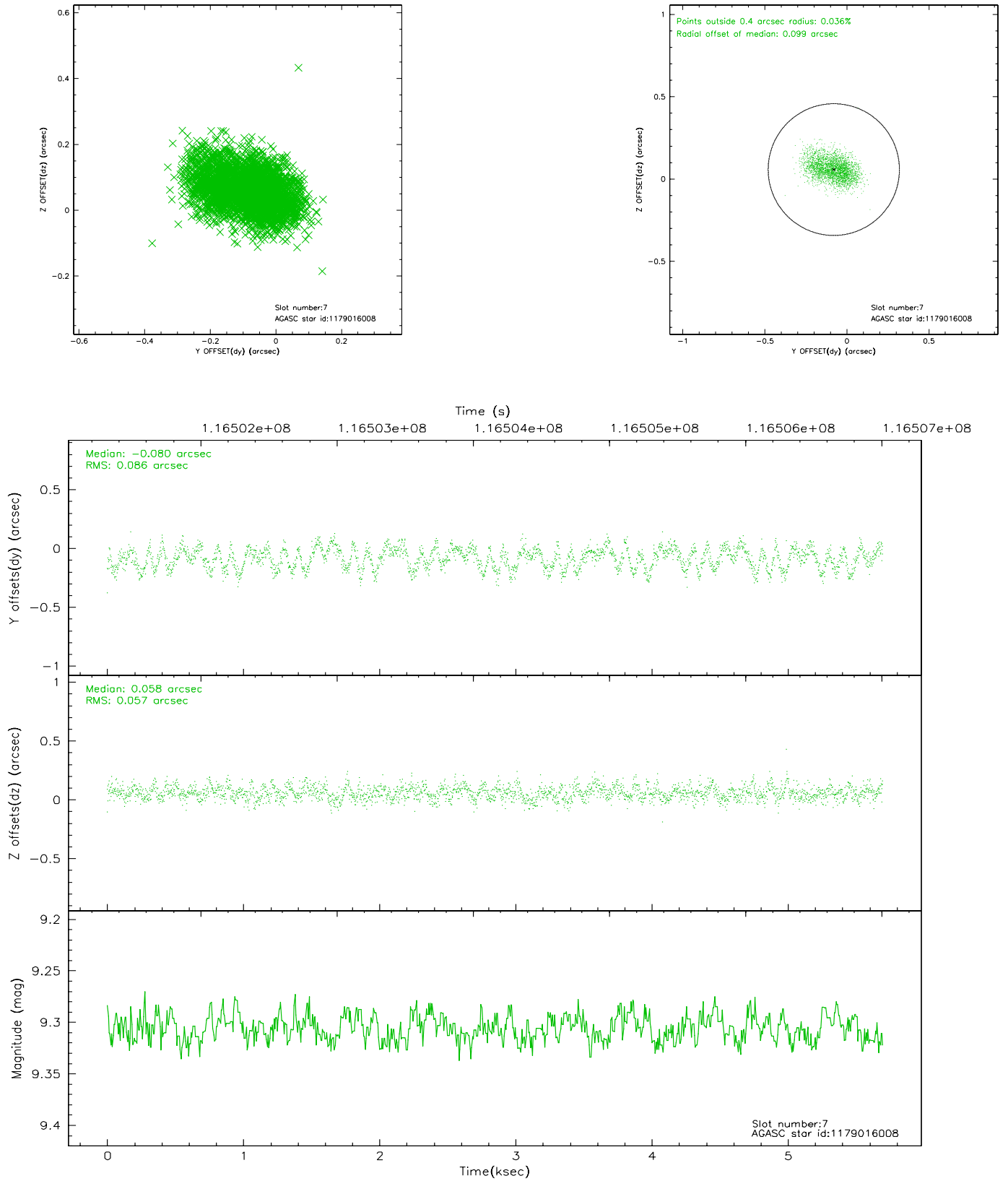
2.4.3 Slot 5



2.4.4 Slot 6

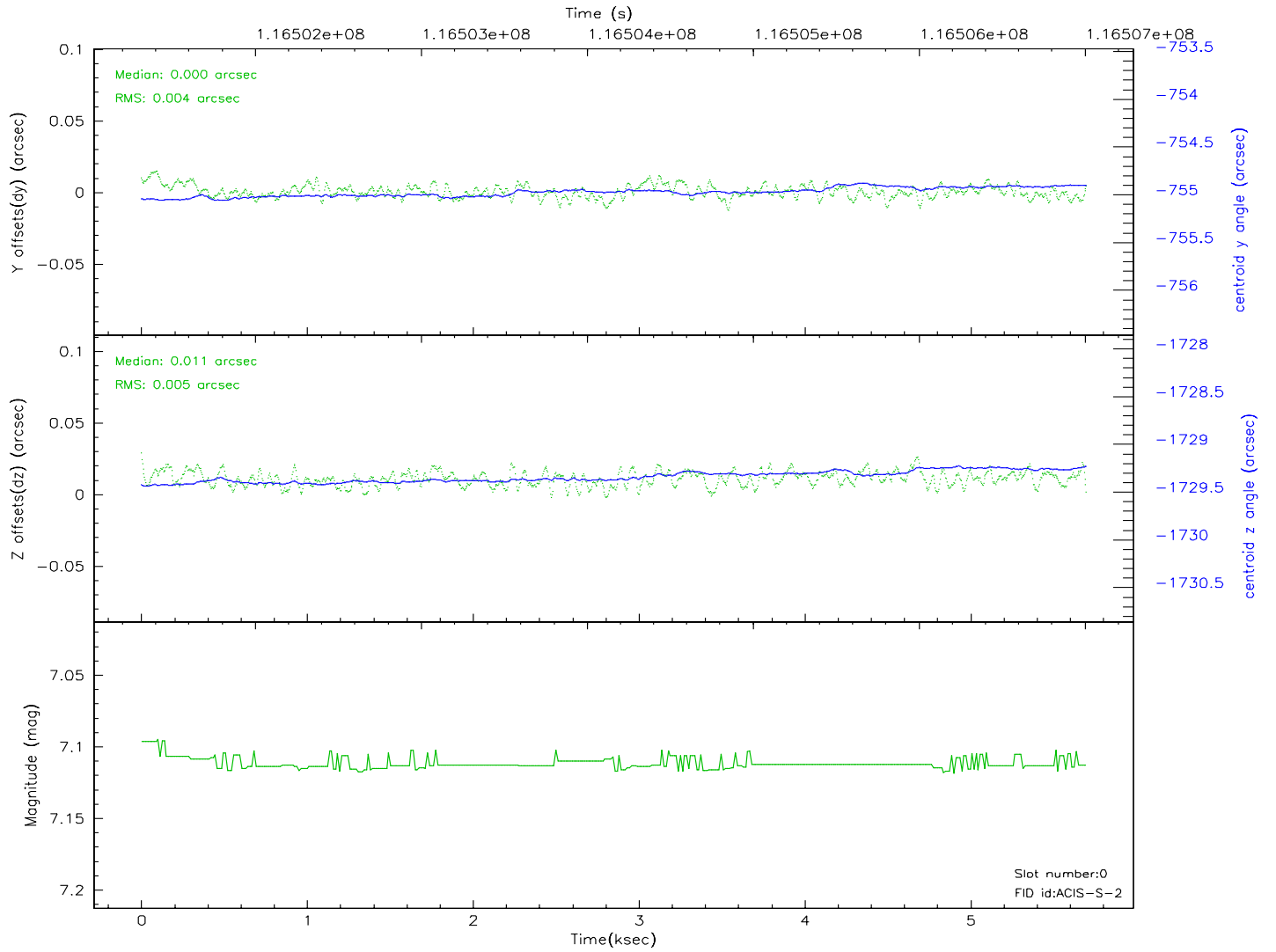
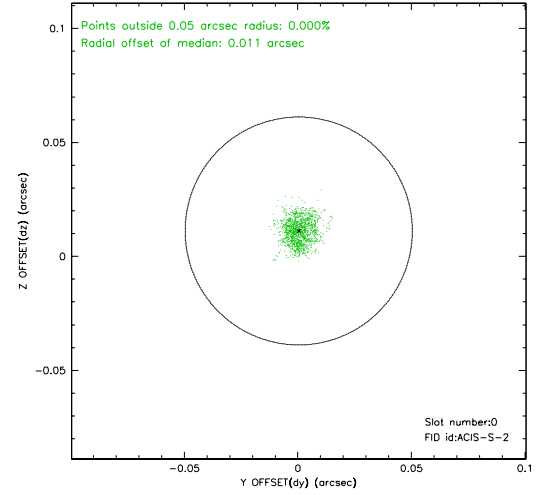
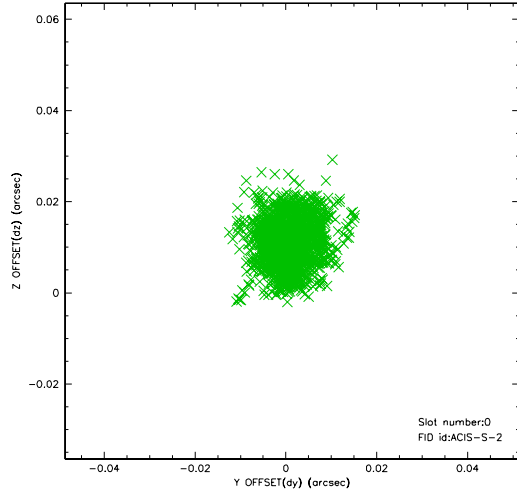


2.4.5 Slot 7

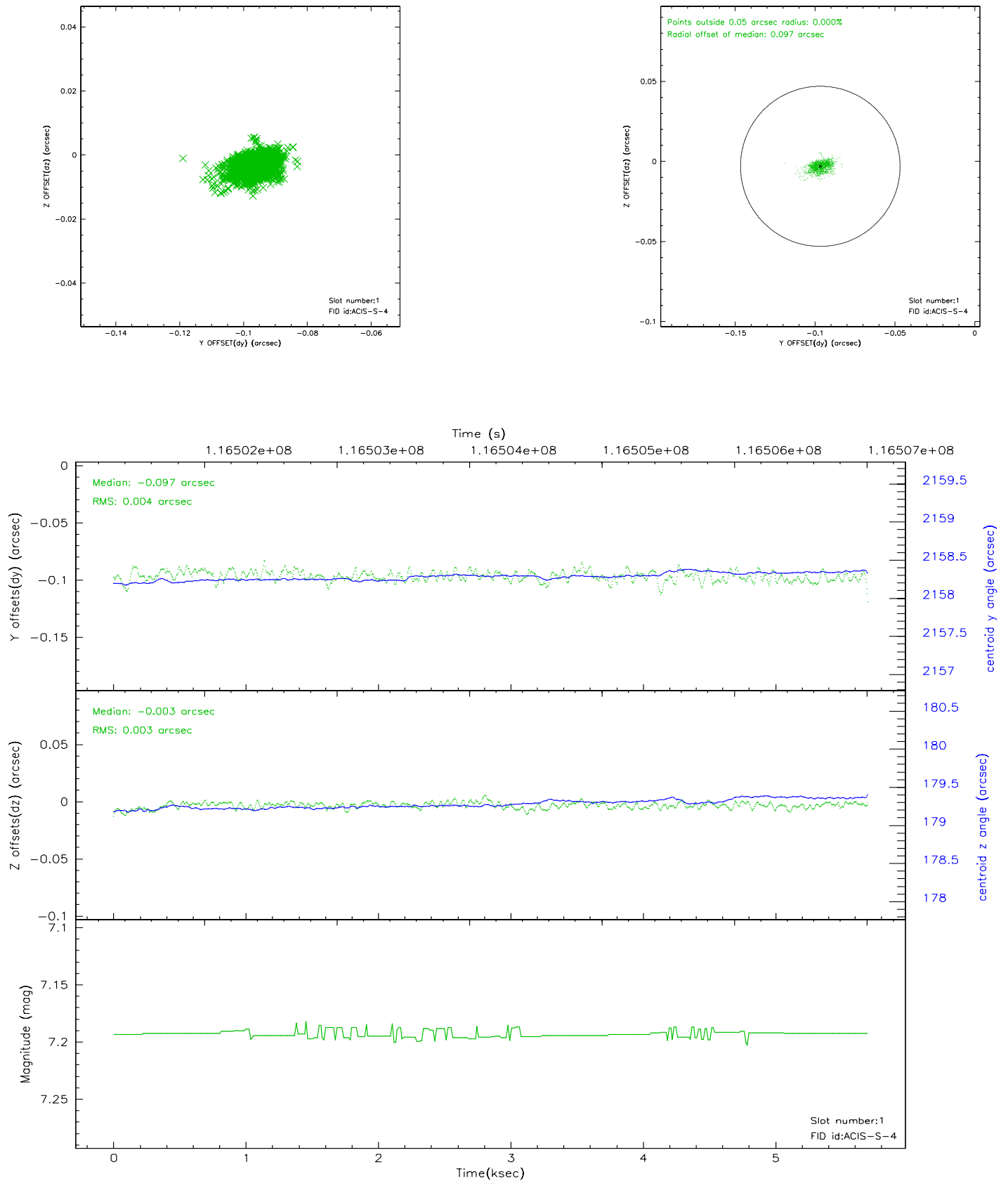


2.5 FID Slots

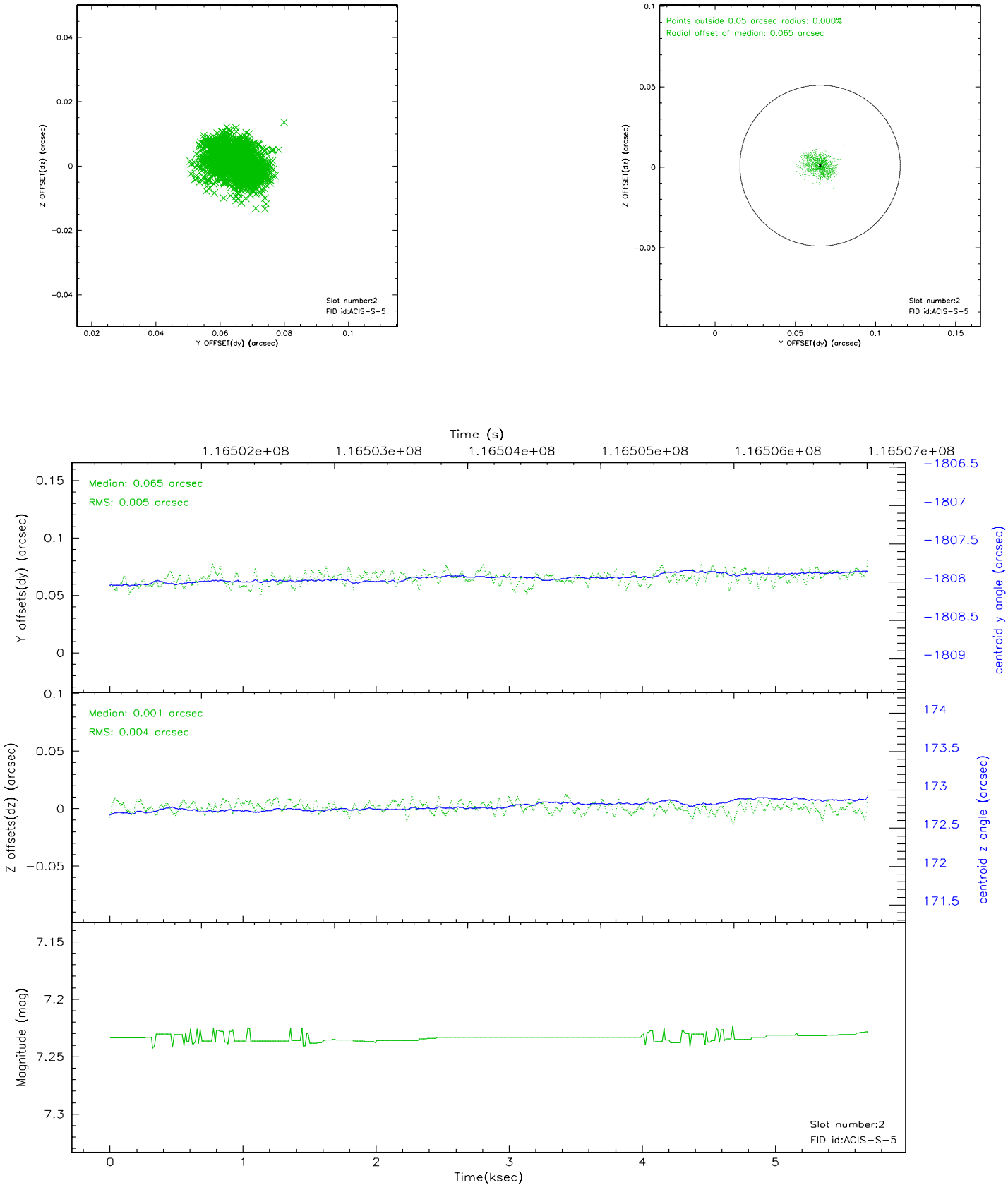
2.5.1 Slot 0



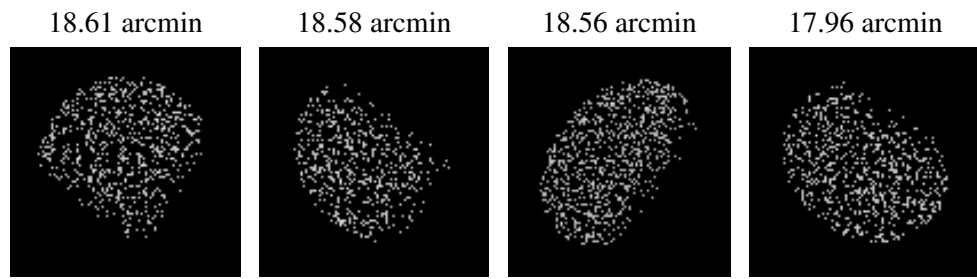
2.5.2 Slot 1



2.5.3 Slot 2



3 Point Sources



A Summary

A.1 Status

V&V Scientist	Beth Sundheim
V&V Date (YYYY-MM-DD)	2007.01.04
V&V Edition	1
V&V Disposition and Status	OK
V&V Charge Time	5.1

A.2 Comments