

# V&V Reference Report

## L2 ASCDS Version : 7.6.10

Observation 1908 - L2 Version 001  
Chandra X-Ray Center

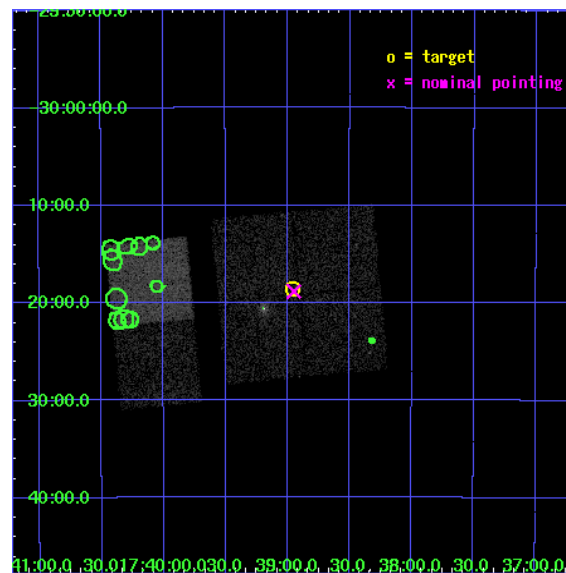
L2 Processing Date : Jan 10 2007

## Contents

<b>1</b>	<b>Front</b>	<b>2</b>
<b>2</b>	<b>OBI</b>	<b>3</b>
2.1	OBI . . . . .	3
2.1.1	Images . . . . .	3
2.1.2	Bias . . . . .	3
2.1.3	Parameters . . . . .	4
2.1.4	Events . . . . .	4
2.2	Compared Parameters . . . . .	5
2.3	Aspect . . . . .	6
2.4	Star Slots . . . . .	9
2.4.1	Slot 3 . . . . .	9
2.4.2	Slot 4 . . . . .	10
2.4.3	Slot 5 . . . . .	11
2.4.4	Slot 6 . . . . .	12
2.4.5	Slot 7 . . . . .	13
2.5	FID Slots . . . . .	14
2.5.1	Slot 0 . . . . .	14
2.5.2	Slot 1 . . . . .	15
2.5.3	Slot 2 . . . . .	16
<b>3</b>	<b>Point Sources</b>	<b>17</b>
<b>A</b>	<b>Summary</b>	<b>18</b>
A.1	Status . . . . .	18
A.2	Comments . . . . .	18

# 1 Front

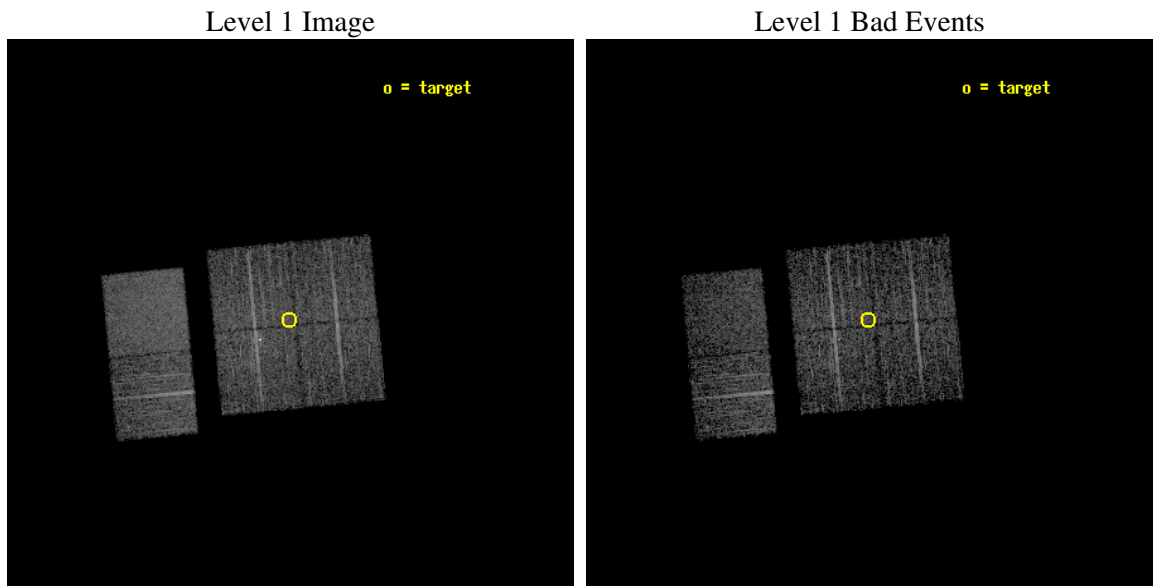
seq_num	400121
obs_id	1908
title	XTE J1739-302 IN QUIESCENCE
observer	Prof David Smith
object	XTE J1739-302
dtcycle	0
cycle	P
ra_targ	264.74
dec_targ	-30.31
ra_nom	264.7374037691
dec_nom	-30.314069322556
roll_nom	264.63321756811
revision	2
ontime	4950.4000046104
livetime	4887.715058979
ontime0	4950.4000046104
ontime1	4950.4000046104
ontime2	4950.4000046104
ontime3	4950.4000046104
ontime6	4950.4000046104
ontime7	4950.4000046104
l2events	35110



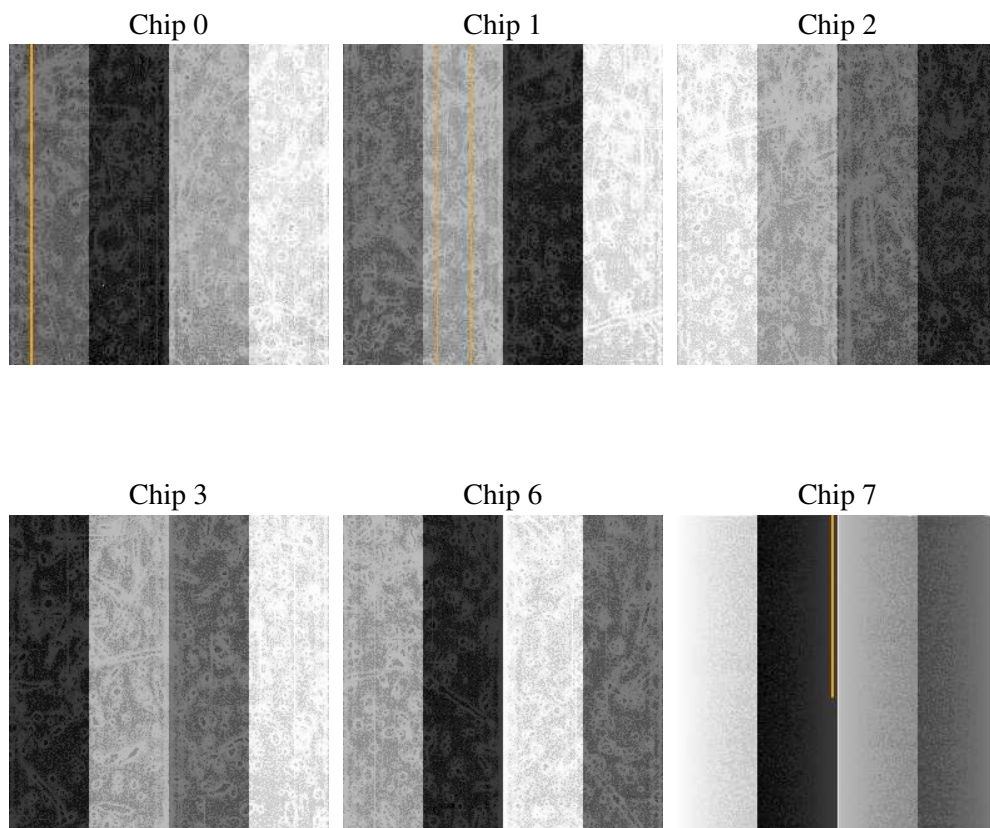
## 2 OBI

### 2.1 OBI

#### 2.1.1 Images



#### 2.1.2 Bias



### 2.1.3 Parameters

obi_num	0
ascdsver	7.6.10
caldsver	3.3.0
date	2007-01-10T12:32:50
revision	2

sched_exp_time	5000.000000
ontime	4950.4000046104
ontime0	4950.4000046104
ontime1	4950.4000046104
ontime2	4950.4000046104
ontime3	4950.4000046104
ontime6	4950.4000046104
ontime7	4950.4000046104
l1events	188453

### 2.1.4 Events

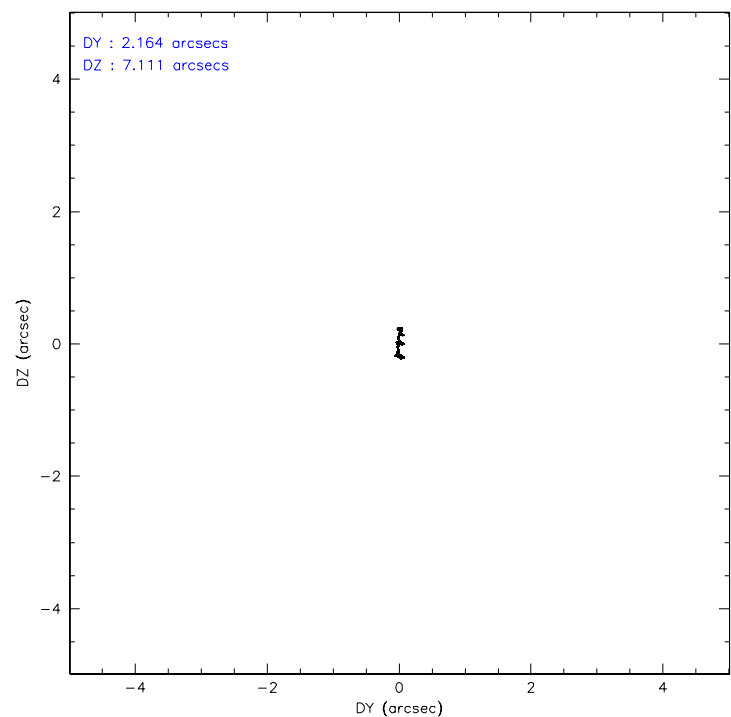
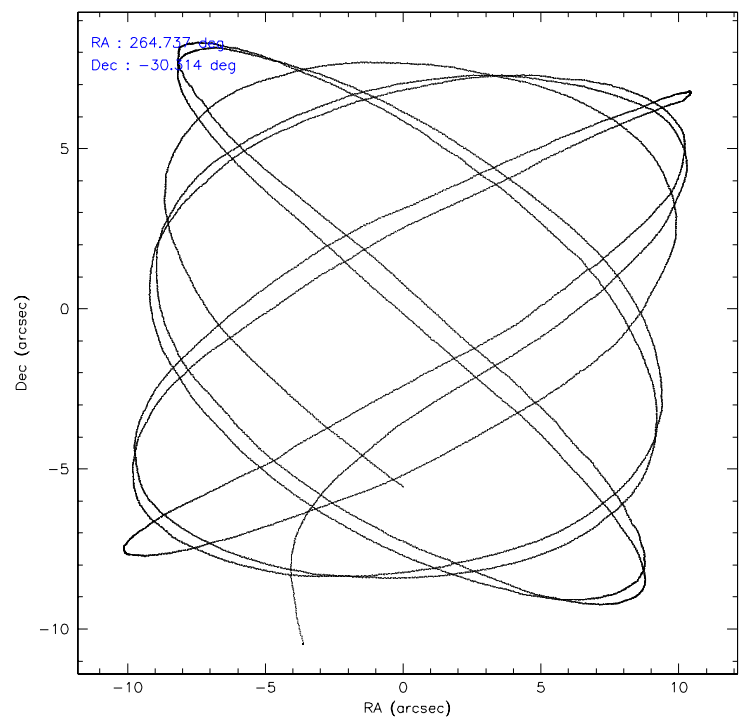
	ccd 0	ccd 1	ccd 2	ccd 3	ccd 6	ccd 7
level 1 events	26732	27874	31847	30391	32319	39290
rejected events	22841	23833	26203	26505	28394	22575
rejected %	85%	85%	82%	87%	87%	57%

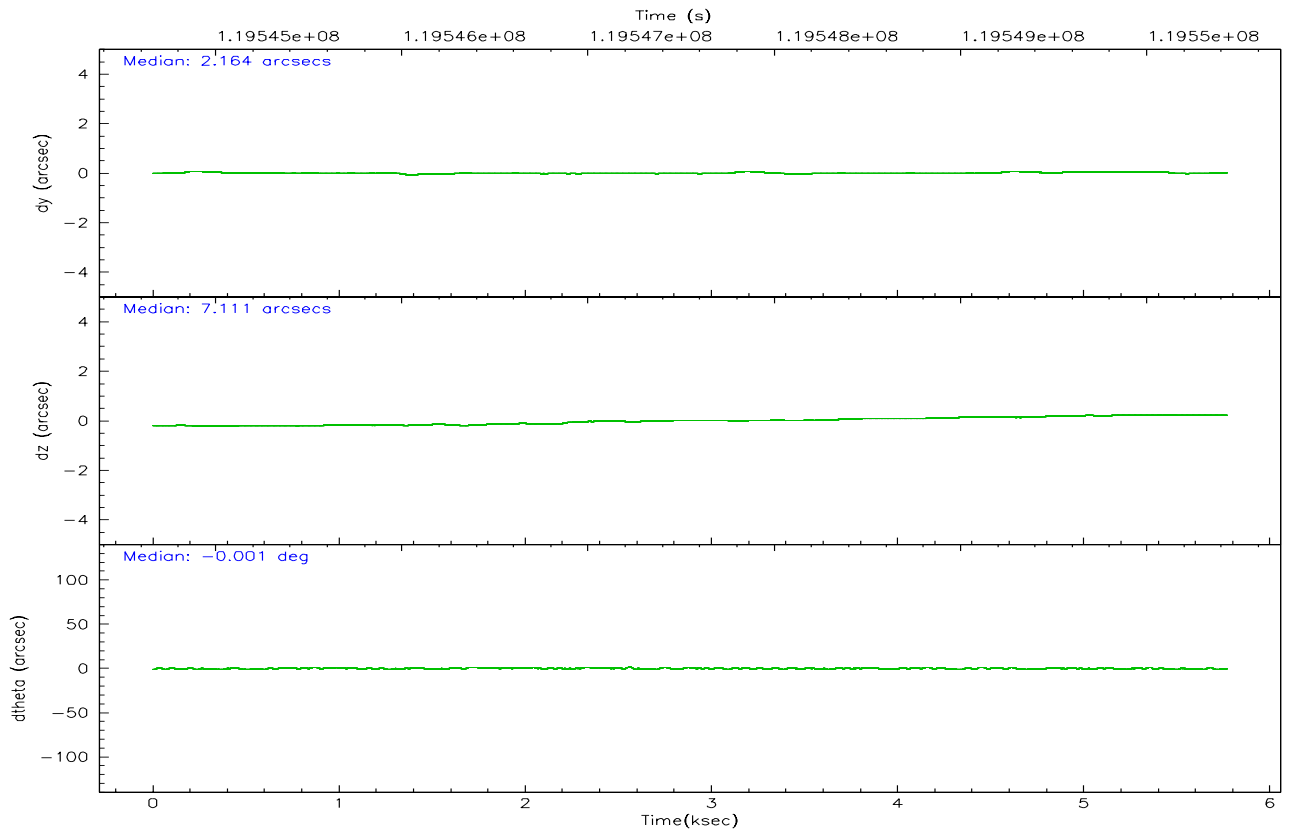
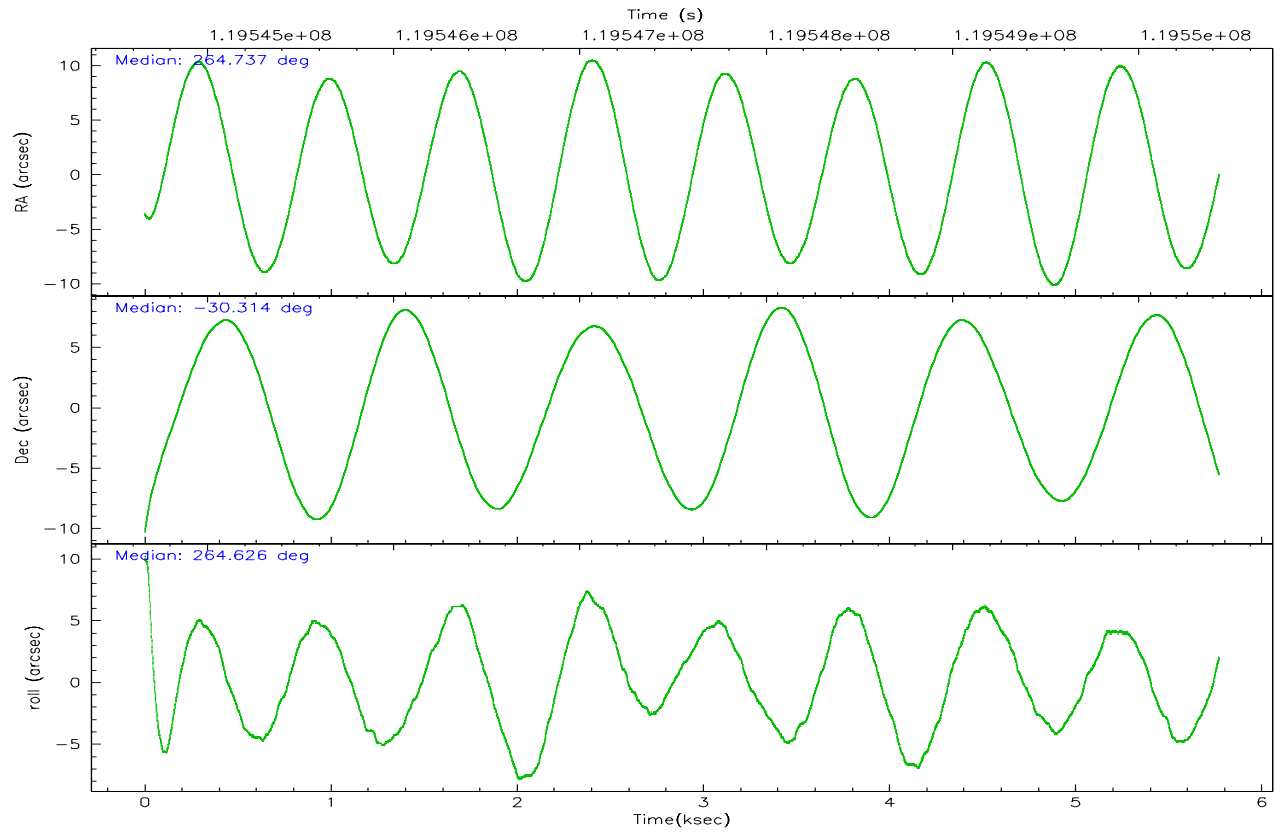
	ccd 0	ccd 1	ccd 2	ccd 3	ccd 6	ccd 7
grade 0 events	1792	1771	2878	1820	1726	1631
	6%	6%	9%	5%	5%	4%
grade 1 events	16	11	97	18	17	41
	0%	0%	0%	0%	0%	0%
grade 2 events	756	772	1072	791	779	3447
	2%	2%	3%	2%	2%	8%
grade 3 events	356	394	469	319	343	1561
	1%	1%	1%	1%	1%	3%
grade 4 events	325	368	427	338	348	1513
	1%	1%	1%	1%	1%	3%
grade 5 events	1071	1110	1119	1254	1357	3739
	4%	3%	3%	4%	4%	9%
grade 6 events	670	737	805	624	734	8581
	2%	2%	2%	2%	2%	21%
grade 7 events	21746	22711	24980	25227	27015	18777
	81%	81%	78%	83%	83%	47%

## 2.2 Compared Parameters

Parameter	Planned	Actual	Parameter	Planned	Actual
Instrument	ACIS	ACIS	Obspar format version number	6	6
Detector	ACIS-012367	ACIS-012367	Obspar file type	PREDICTED	ACTUAL
Grating	NONE	NONE	Obspar update status	NONE	UPDATED
Data mode	FAINT	FAINT	Number of optional ACIS chips dropped	0	0
Observation mode	POINTING	POINTING	On-chip summing requested	N	N
Pointing RA	264.724114	264.737403769101	Subarray requested	NONE	NONE
Pointing Dec	-30.289231	-30.31406932255625	Alternating exposures requested	N	N
Pointing Roll	264.417811	264.6332175681081	Primary exposure time	0.000000	3.2
SIM focus pos (mm)	-0.782348	-0.7809083437167272			
SIM defocus (mm)	0	0.001439871863259334			
SIM translation stage pos (mm)	-233.592463	-233.5874344608287			
SIM translation stage offset (mm)	0	-0.005018542100998502			
Observation start time	119545436.184000	119544179.3323			
Observation start date	2001-10-15T15:02:52	2001-10-15T14:42:59			
Observation end time	119550436.184000	119550734.20756			
Observation end date	2001-10-15T16:26:12	2001-10-15T16:32:14			
Read mode	TIMED	TIMED			

### 2.3 Aspect





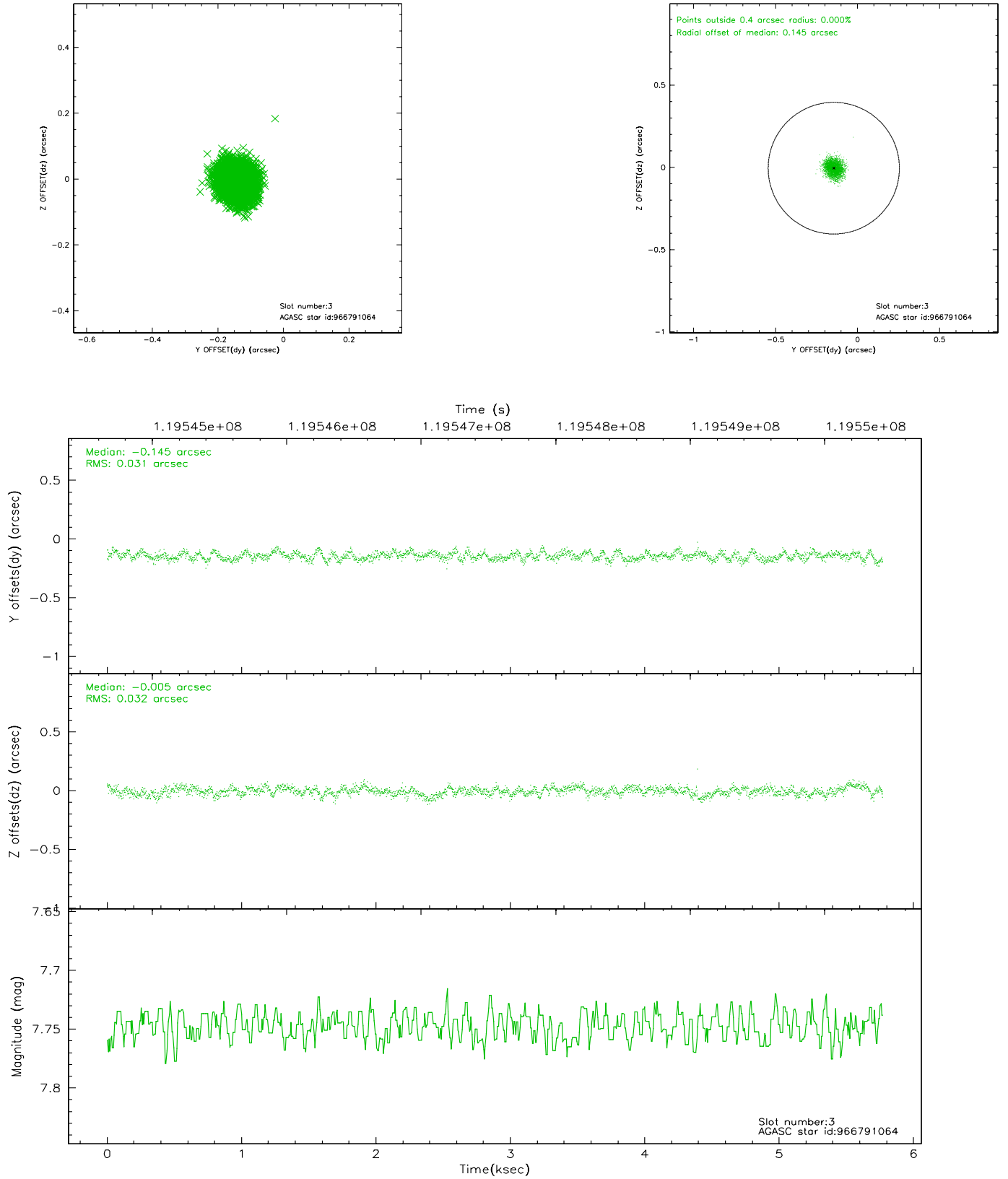
### Slot Statistics

slot	status	id	mag	n_pts	med_dy	med_dz	dr1	dr2	ra	dec	mean_y	mean_z
0	FID	ACIS-I-1	7.24	1408	-0.029	0.064	0.009	0.017	0.000000	0.000000	937.60	-830.46
1	FID	ACIS-I-5	7.24	1408	0.002	0.046	0.007	0.013	0.000000	0.000000	-1809.86	1066.56
2	FID	ACIS-I-6	7.26	1408	-0.064	-0.040	0.011	0.019	0.000000	0.000000	402.05	1712.10
3	GUIDE	966791064	7.75	2816	-0.145	-0.005	0.048	0.074	263.920275	-30.338943	429.62	-2466.83
4	GUIDE	966790696	8.42	2814	0.230	-0.008	0.072	0.115	264.462516	-30.909486	2301.92	-587.01
5	GUIDE	896406904	8.98	2816	-0.004	-0.130	0.097	0.147	264.311862	-29.742267	-1831.51	-1473.91
6	GUIDE	966791536	9.35	2816	0.010	0.099	0.096	0.151	265.423122	-30.013043	-1196.20	2072.56
7	GUIDE	896402008	9.34	2812	-0.091	0.047	0.096	0.159	265.494990	-29.907324	-1595.52	2262.38

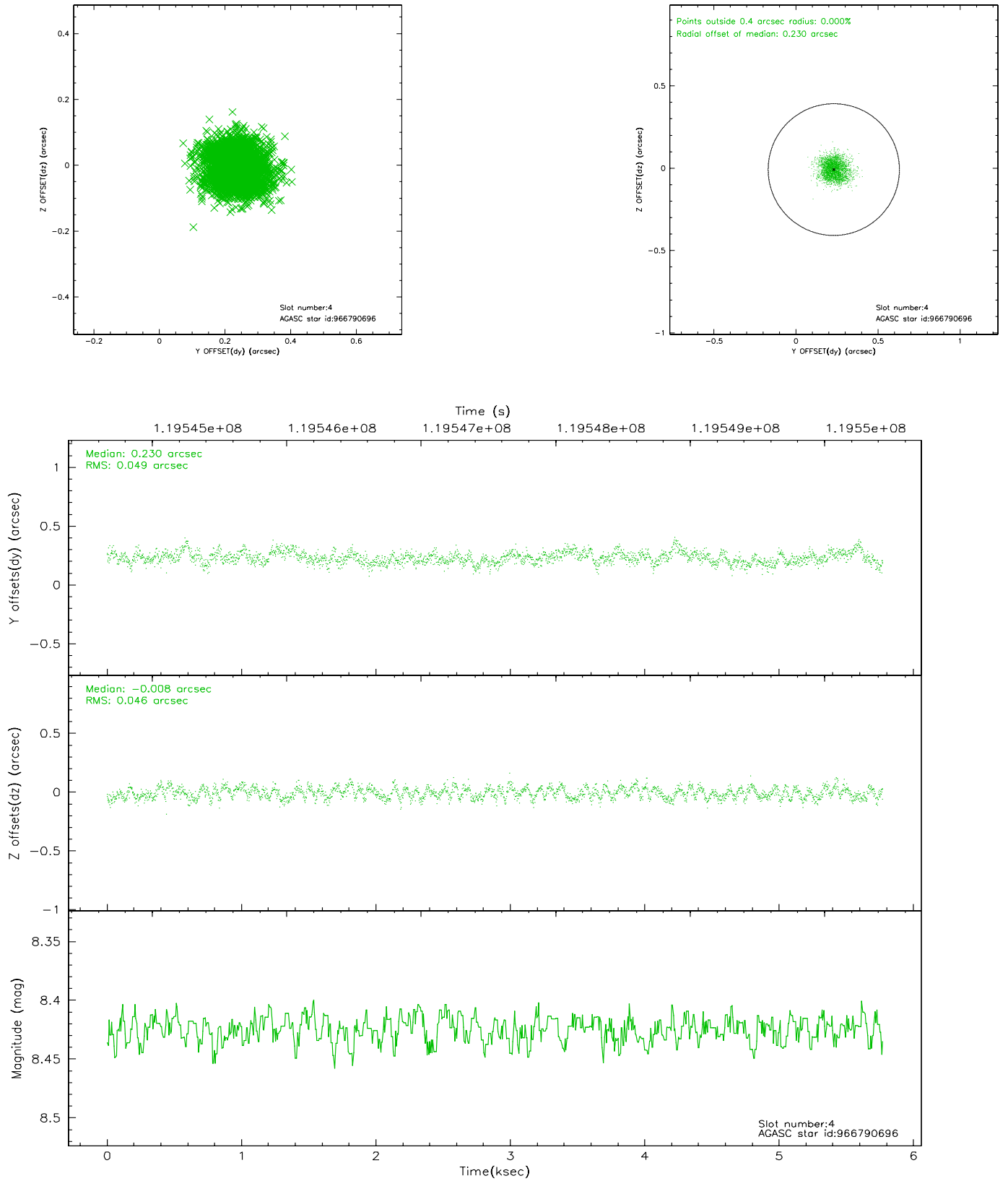


## 2.4 Star Slots

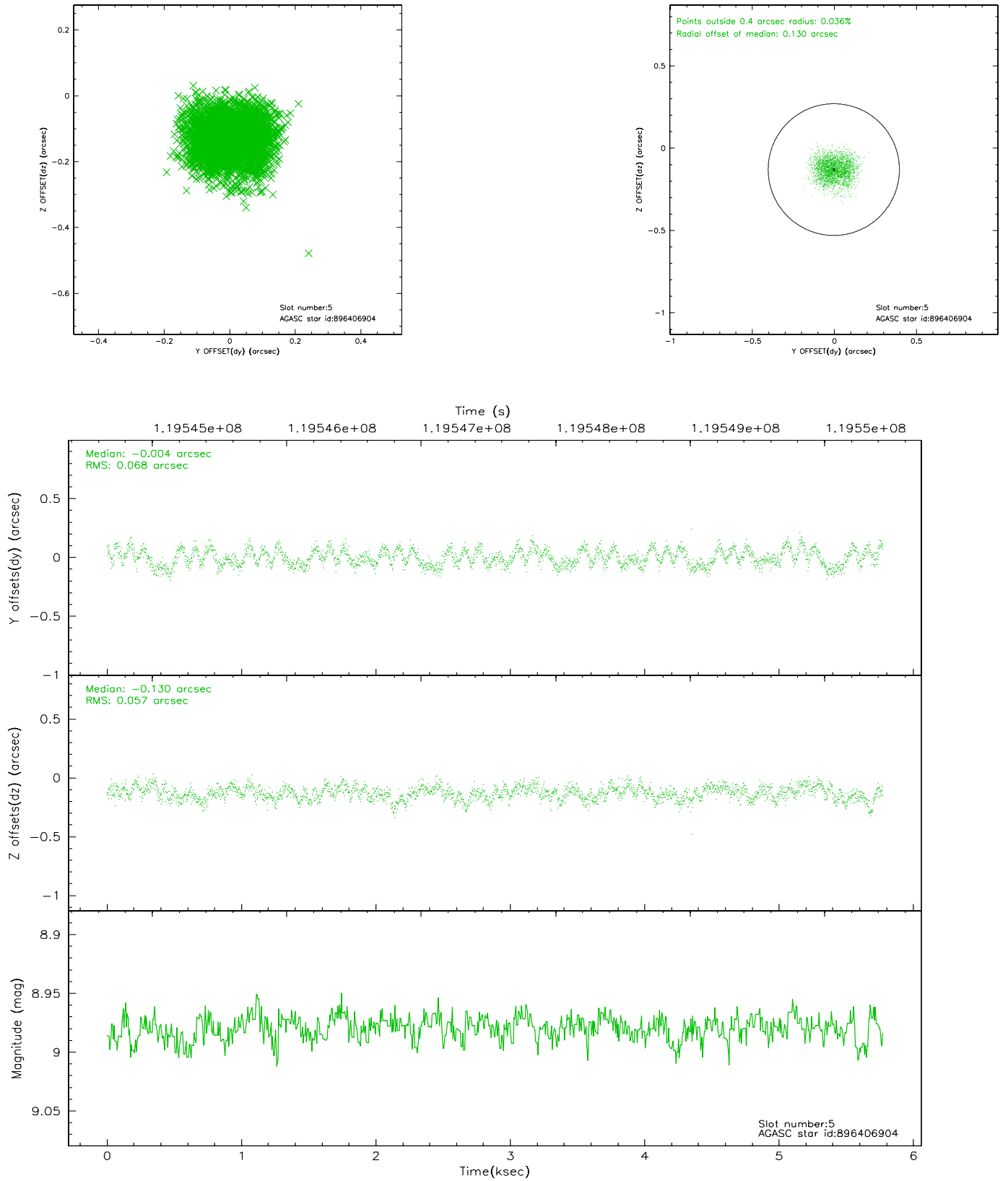
### 2.4.1 Slot 3



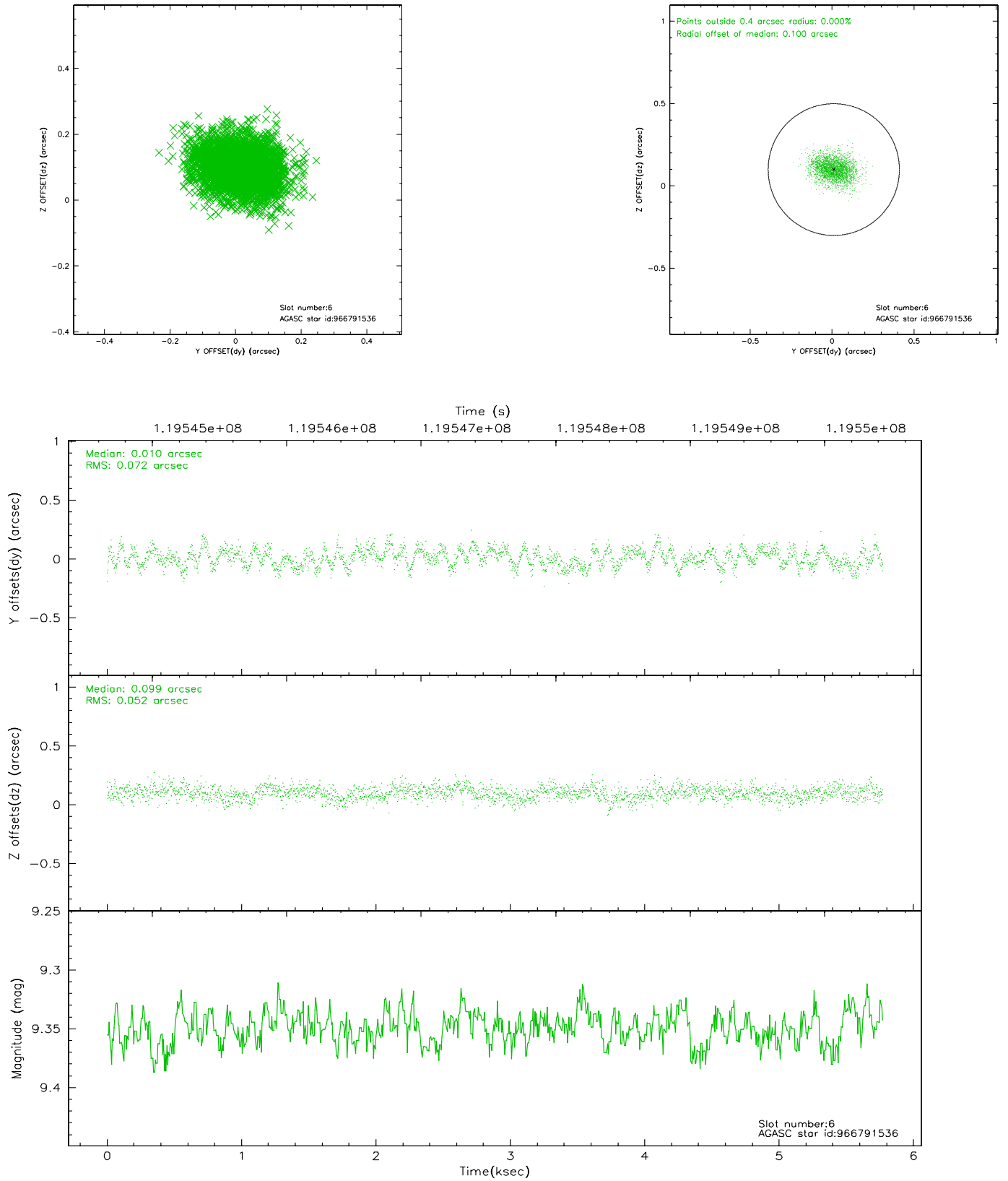
## 2.4.2 Slot 4



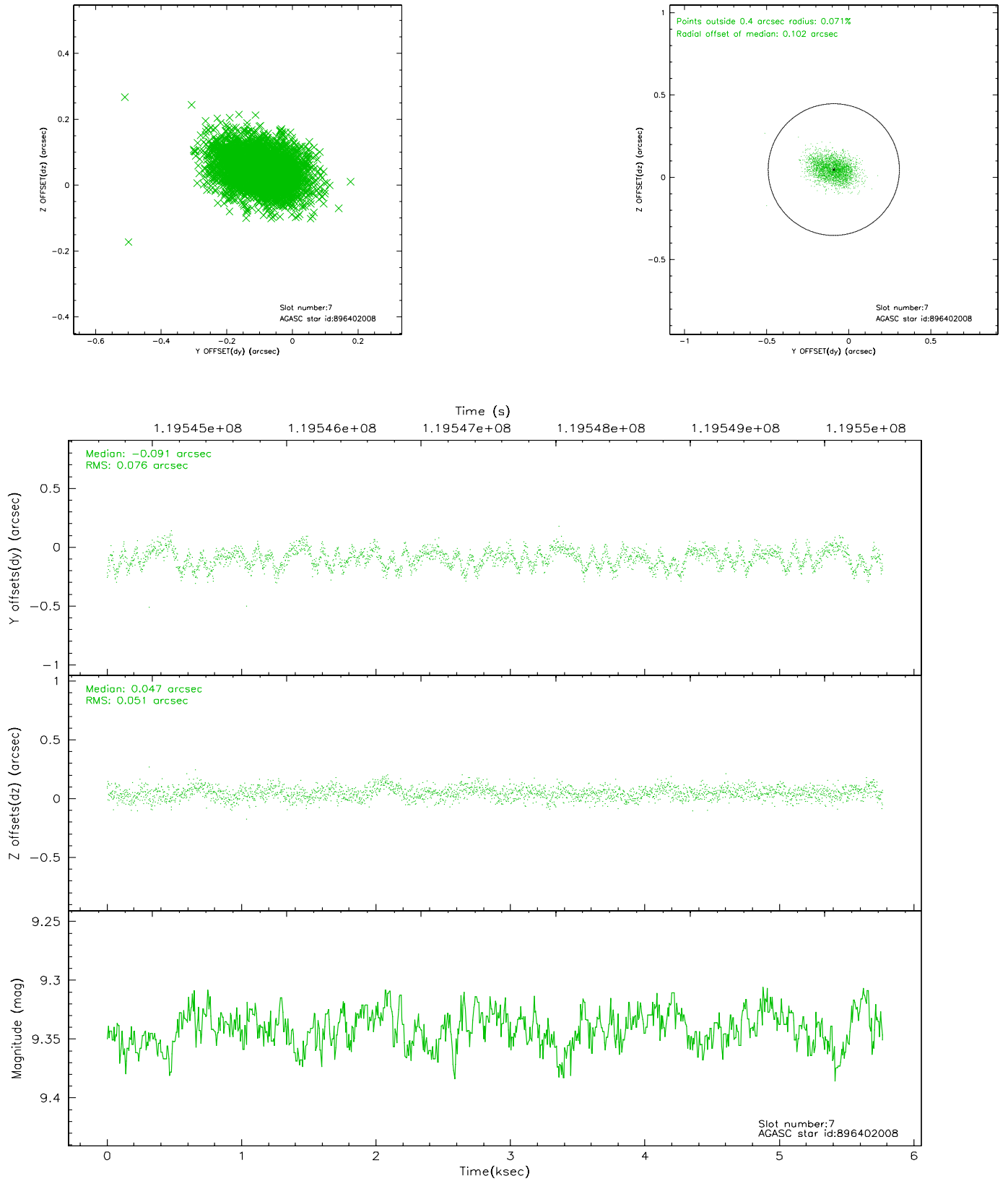
### 2.4.3 Slot 5



## 2.4.4 Slot 6

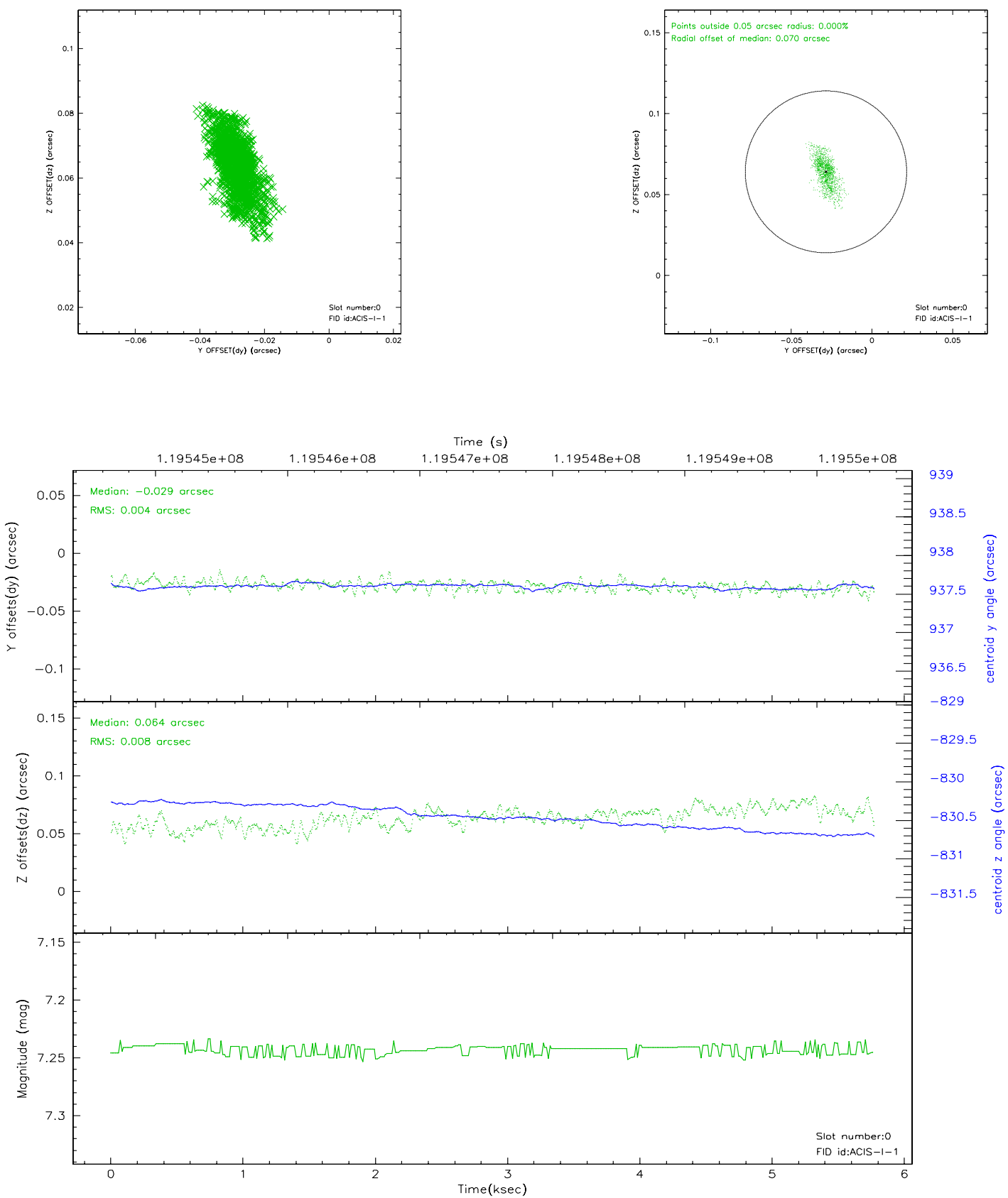


## 2.4.5 Slot 7

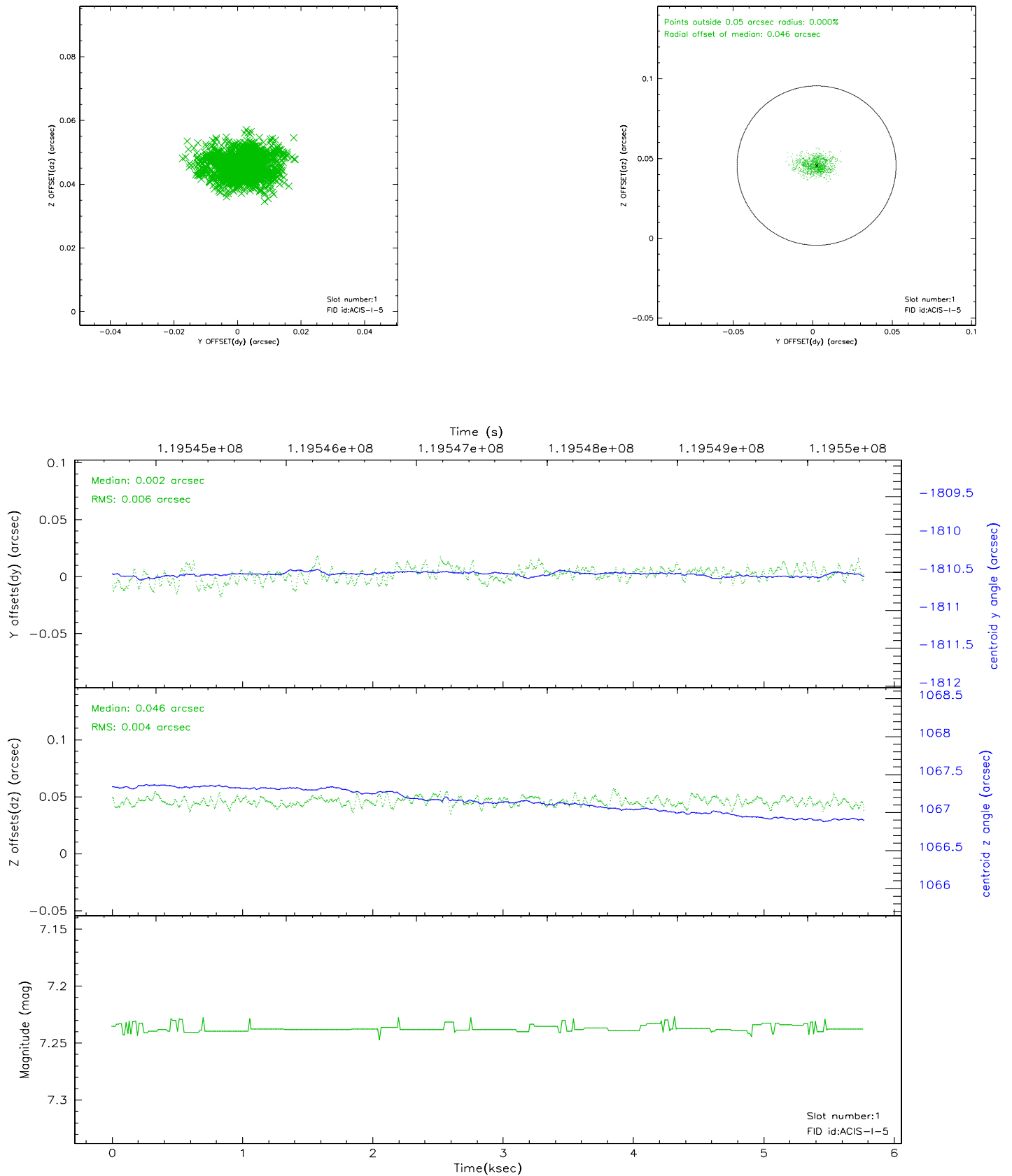


## 2.5 FID Slots

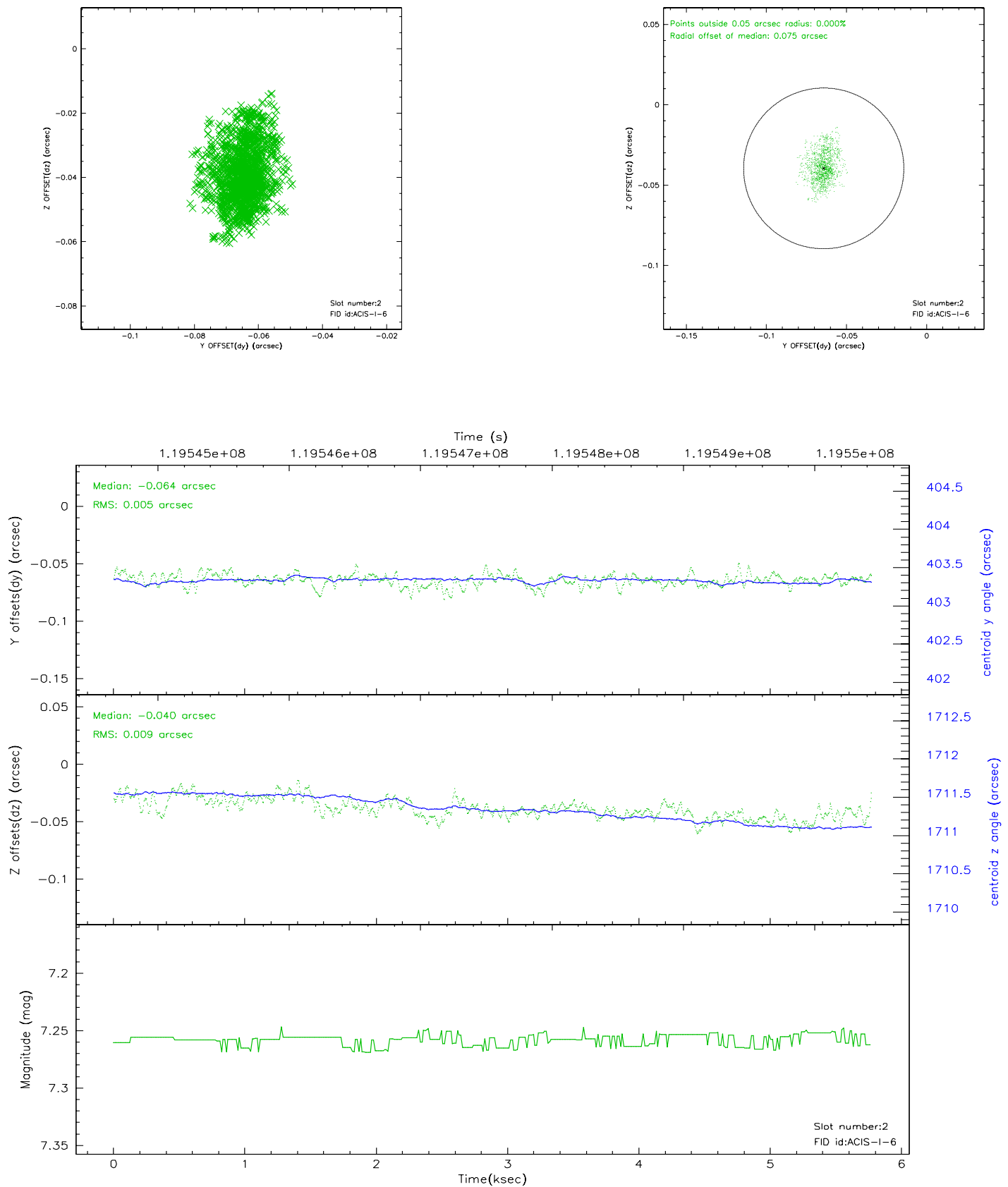
### 2.5.1 Slot 0



## 2.5.2 Slot 1

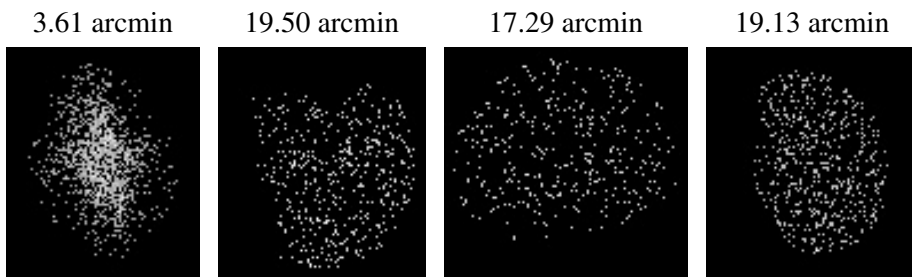


### 2.5.3 Slot 2





### 3 Point Sources



## A Summary

### A.1 Status

V&V Scientist	Beth Sundheim
V&V Date (YYYY-MM-DD)	2007.01.10
V&V Edition	1
V&V Disposition and Status	OK
V&V Charge Time	4.953

### A.2 Comments