

V&V Reference Report

L2 ASCDS Version : 8.4.5

Observation 2492 - L2 Version 4
Chandra X-Ray Center

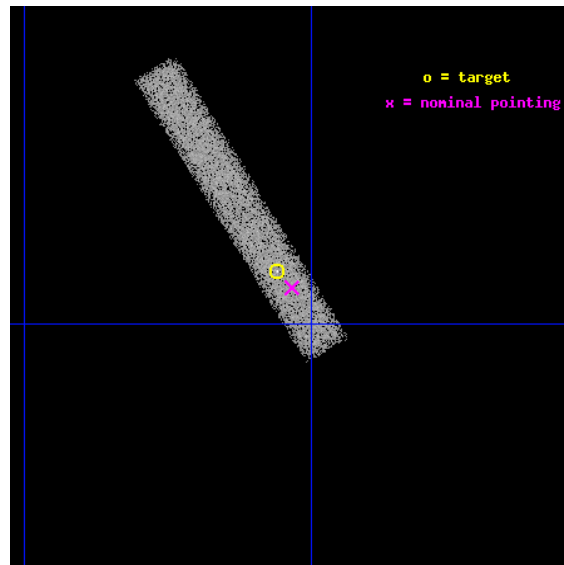
L2 Processing Date : Sep 21 2012

Contents

1	Front	2
2	OBI	3
2.1	OBI	3
2.1.1	Images	3
2.1.2	Bias	3
2.1.3	Parameters	4
2.1.4	Events	4
2.2	Compared Parameters	5
2.3	Aspect	6
2.4	Star Slots	9
2.4.1	Slot 3	9
2.4.2	Slot 4	10
2.4.3	Slot 5	11
2.4.4	Slot 6	12
2.4.5	Slot 7	13
2.5	FID Slots	14
2.5.1	Slot 0	14
2.5.2	Slot 1	15
2.5.3	Slot 2	16
A	Summary	17
A.1	Status	17
A.2	Comments	17

1 Front

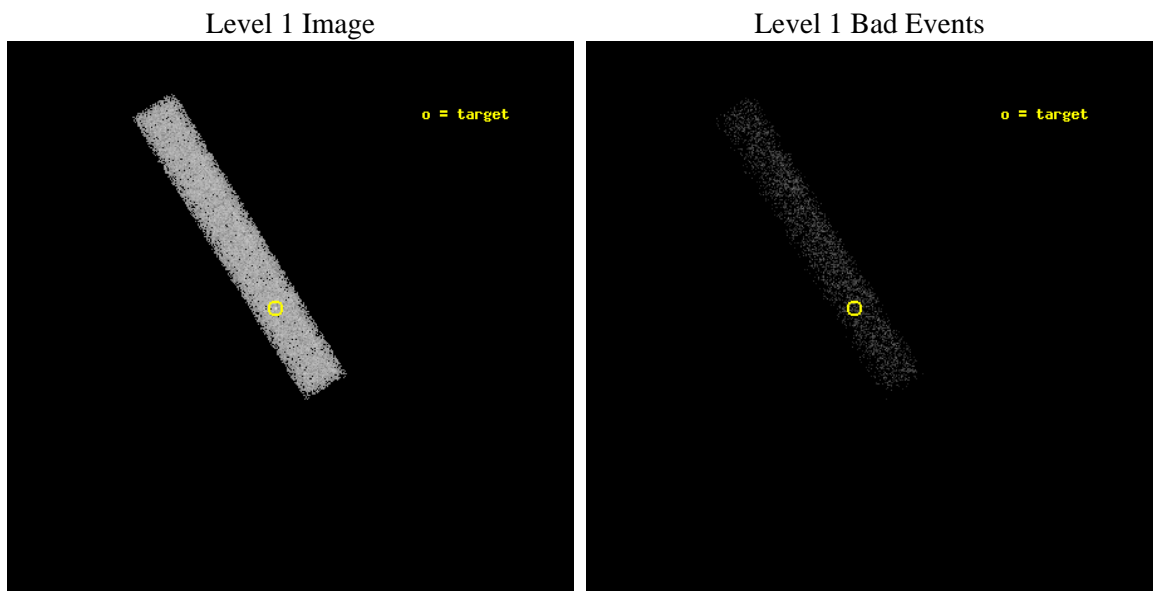
seq_num	300056	Sequence number
obs_id	2492	Observation id
title	THE RECURRENT NOVA CI AQL	Proposal title
observer	Dr. Jochen Greiner	Principal investigator
object	CI AQL	Source name
dtcycle	0	
cycle	P	events from which exps? Prim/Second/Both
ra_targ	283.015	Observer's specified target RA [deg]
dec_targ	-1.4775	Observer's specified target Dec [deg]
ra_nom	283.00846215893	Nominal RA [deg]
dec_nom	-1.4847243951939	Nominal Dec [deg]
roll_nom	238.10648600369	Nominal Roll [deg]
revision	4	Processing version of data
ontime	19884.677176327	Sum of GTIs [s]
liveltime	18034.352599607	Livetime [s]
ontime7	19884.677176327	Sum of GTIs [s]
l2events	21202	Number of level 2 events



2 OBI

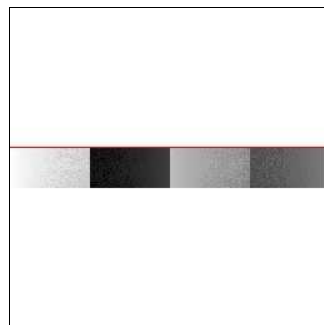
2.1 OBI

2.1.1 Images



2.1.2 Bias

Chip 7



2.1.3 Parameters

obi_num	0	Obi number	sched_exp_time	19739.639000	[s] Scheduled observation exposure time
ascdsver	8.4.5	Processing system revision	ontime	19884.677176327	Sum of GTIs [s]
caldsver	4.5.1.1	 	ontime7	19884.677176327	Sum of GTIs [s]
date	2012-09-21T09:40:52	Date and time of file creation	l1events	35794	Number of level 1 events
revision	4	Processing version of data			

2.1.4 Events

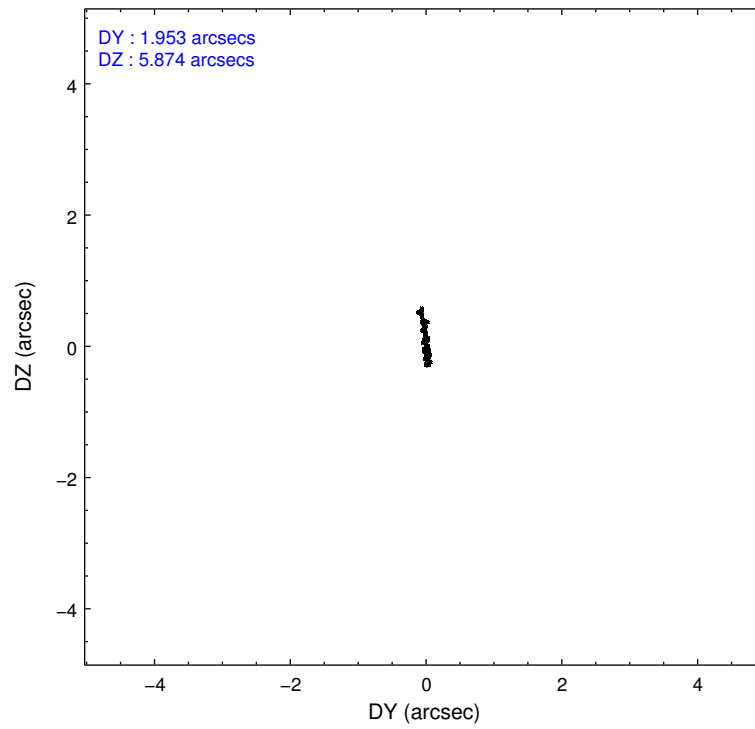
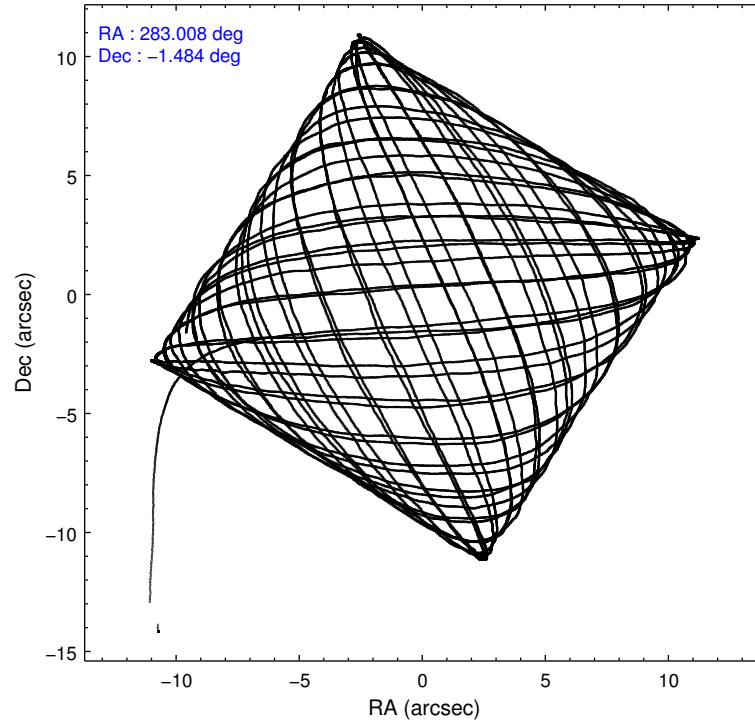
	ccd 7
level 1 events	35794
rejected events	14040
rejected %	39%

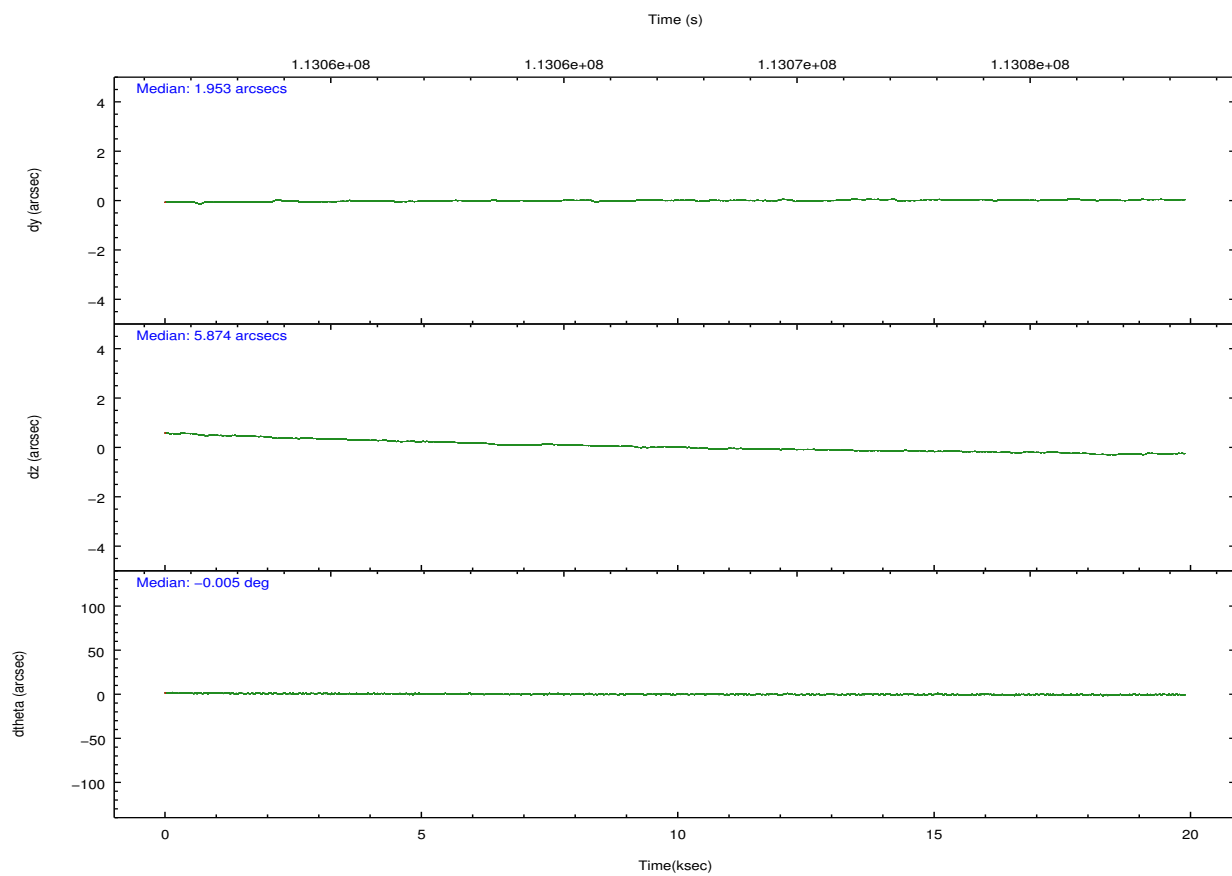
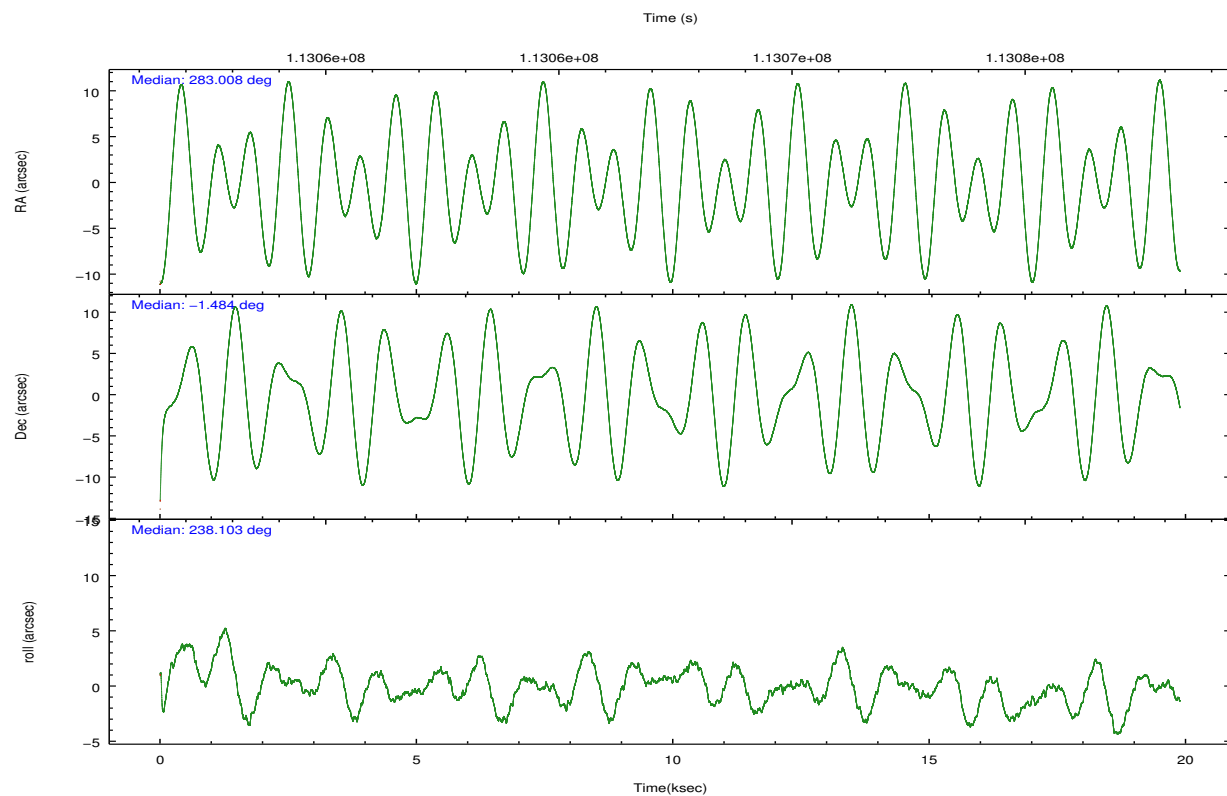
	ccd 7
grade 0 events	2714
	7%
grade 1 events	26
	0%
grade 2 events	4225
	11%
grade 3 events	2441
	6%
grade 4 events	2351
	6%
grade 5 events	2341
	6%
grade 6 events	10906
	30%
grade 7 events	10790
	30%

2.2 Compared Parameters

Parameter	Planned	Actual	Parameter	Planned	Actual
Instrument	ACIS	ACIS	Obspar format version number	7	7
Detector	ACIS-7	ACIS-7	Obspar file type	PREDICTED	ACTUAL
Grating	NONE	NONE	Obspar update status	NONE	UPDATED
Data mode	FAINT	FAINT	Number of optional ACIS chips dropped	0	0
Observation mode	POINTING	POINTING	On-chip summing requested	N	N
[deg] Pointing RA	283.009064	283.0084621589286	Subarray requested	CUSTOM	1/8
[deg] Pointing Dec	-1.457462	-1.48472439519391	Subarray start row	449	449
[deg] Pointing Roll	237.949874	238.1064860036909	Subarray row count	128	128
[mm] SIM focus pos	-0.684267	-0.6828225247311905	Alternating exposures requested	N	N
[mm] SIM defocus	0	0.001444936568705701	[s] Primary exposure time	0.000000	0.4
[mm] SIM translation stage pos	-190.132523	-190.1425803651734			
[mm] SIM translation stage offset	0	0.01005778216563158			
[s] Observation start time (MET)	113057592.184000	113055866.55082			
Observation start date	2001-08-01T12:52:08	2001-08-01T12:24:26			
[s] Observation end time (MET)	113077332.184000	113077646.77668			
Observation end date	2001-08-01T18:21:08	2001-08-01T18:27:26			
Read mode	TIMED	TIMED			

2.3 Aspect



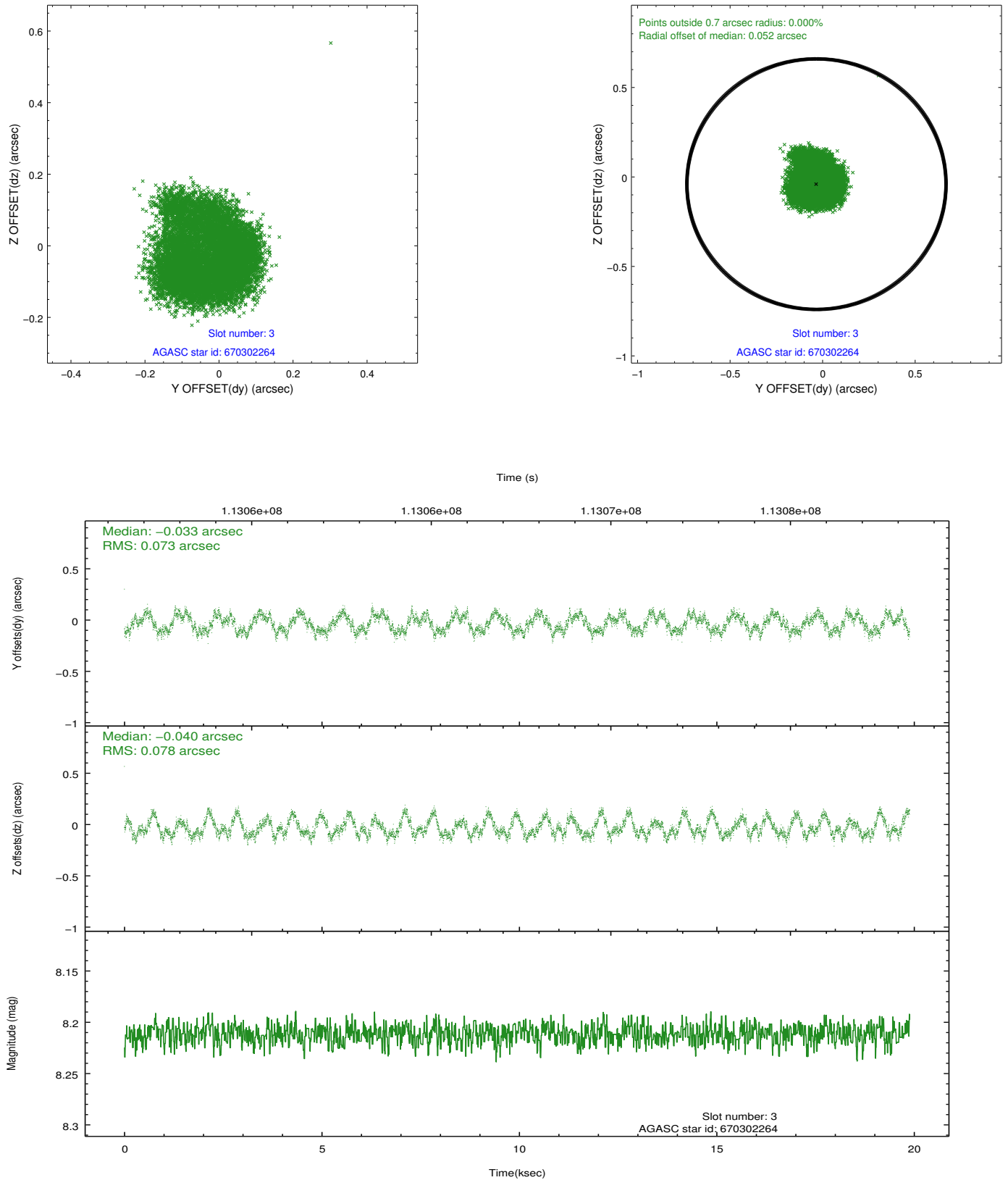


Slot Statistics

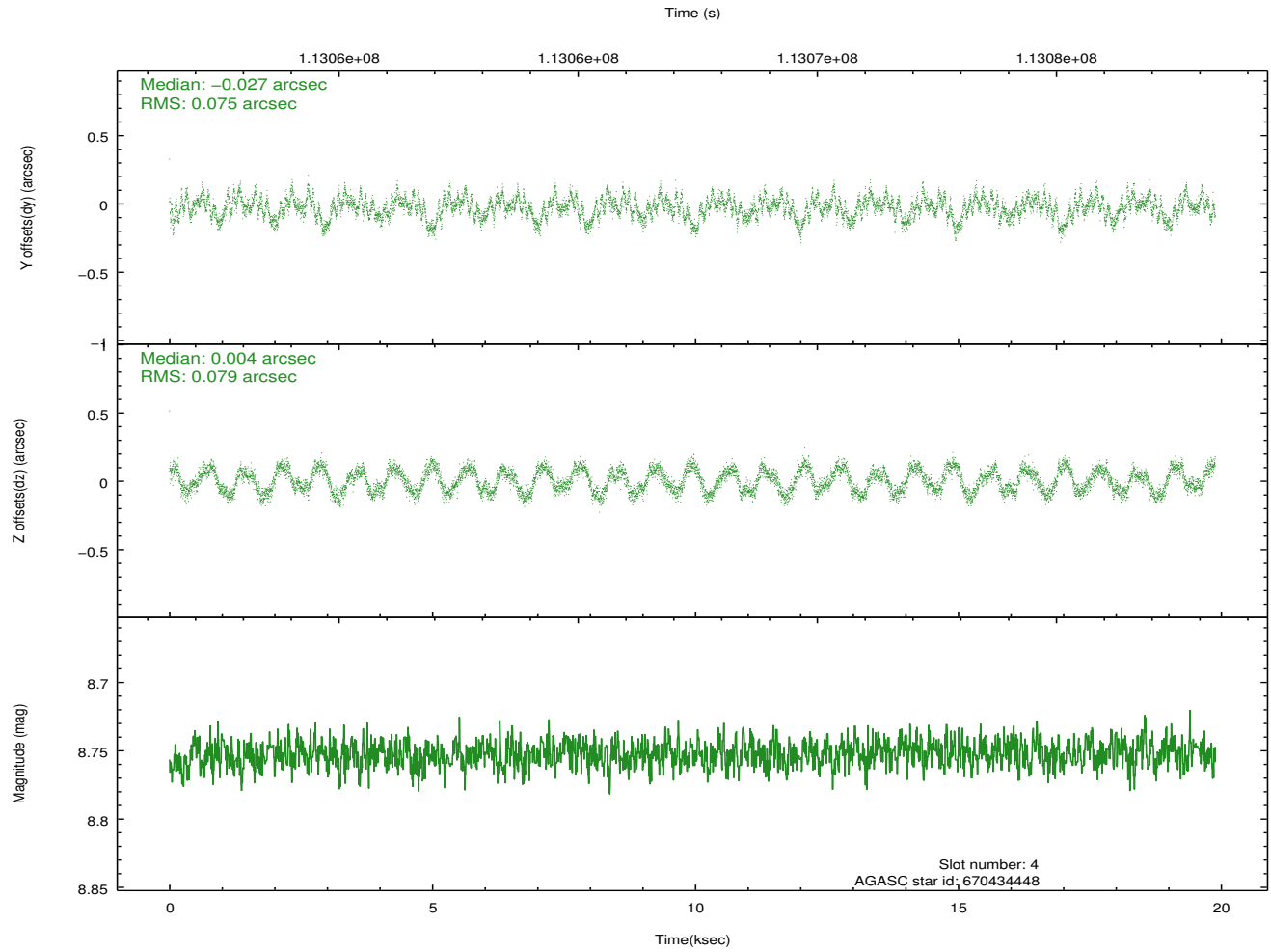
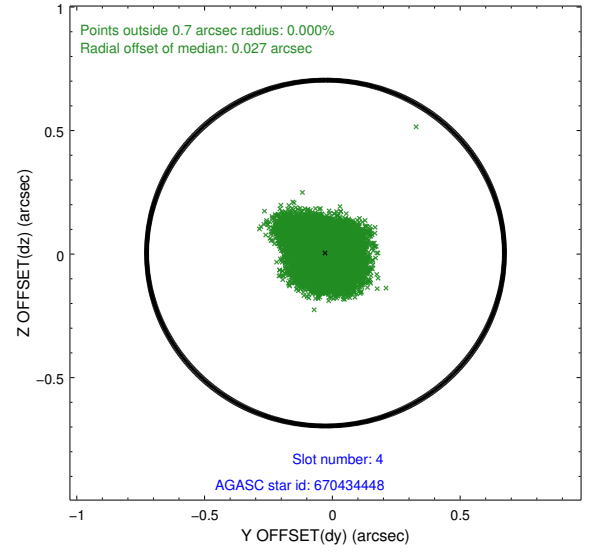
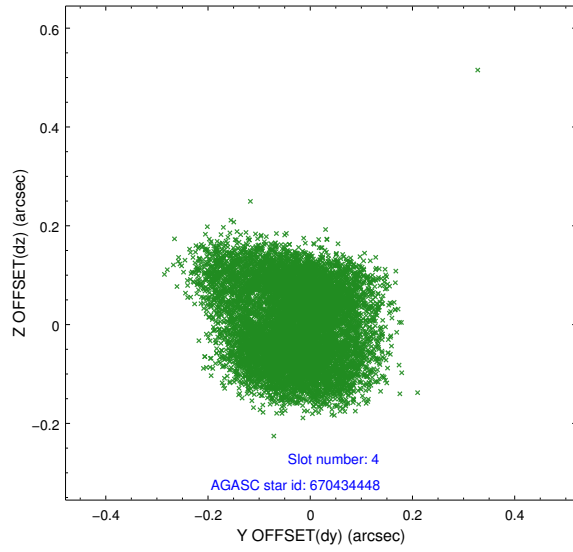
slot	status	id	mag	n_pts	med_dy	med_dz	dr1	dr2	ra	dec	mean_y	mean_z
0	FID	ACIS-S-3	7.36	4850	-0.072	-0.056	0.014	0.026	0.000000	0.000000	58.59	-1856.13
1	FID	ACIS-S-4	7.20	4850	-0.020	0.065	0.009	0.014	0.000000	0.000000	2158.77	181.35
2	FID	ACIS-S-5	7.24	4850	0.064	0.001	0.010	0.017	0.000000	0.000000	-1807.10	175.14
3	GUIDE	670302264	8.21	9699	-0.033	-0.040	0.116	0.170	282.998490	-1.707937	785.23	447.09
4	GUIDE	670434448	8.75	9701	-0.027	0.004	0.118	0.177	283.522579	-1.306427	-1440.63	1278.80
5	GUIDE	670307416	8.95	9697	0.072	0.118	0.105	0.154	282.888823	-1.552742	521.05	-183.80
6	GUIDE	670302816	9.12	9698	0.085	0.054	0.408	0.548	282.920827	-1.759792	1091.96	309.32
7	GUIDE	670304976	9.58	9696	-0.119	-0.098	0.153	0.224	282.807914	-0.609729	-2201.52	-2232.72

2.4 Star Slots

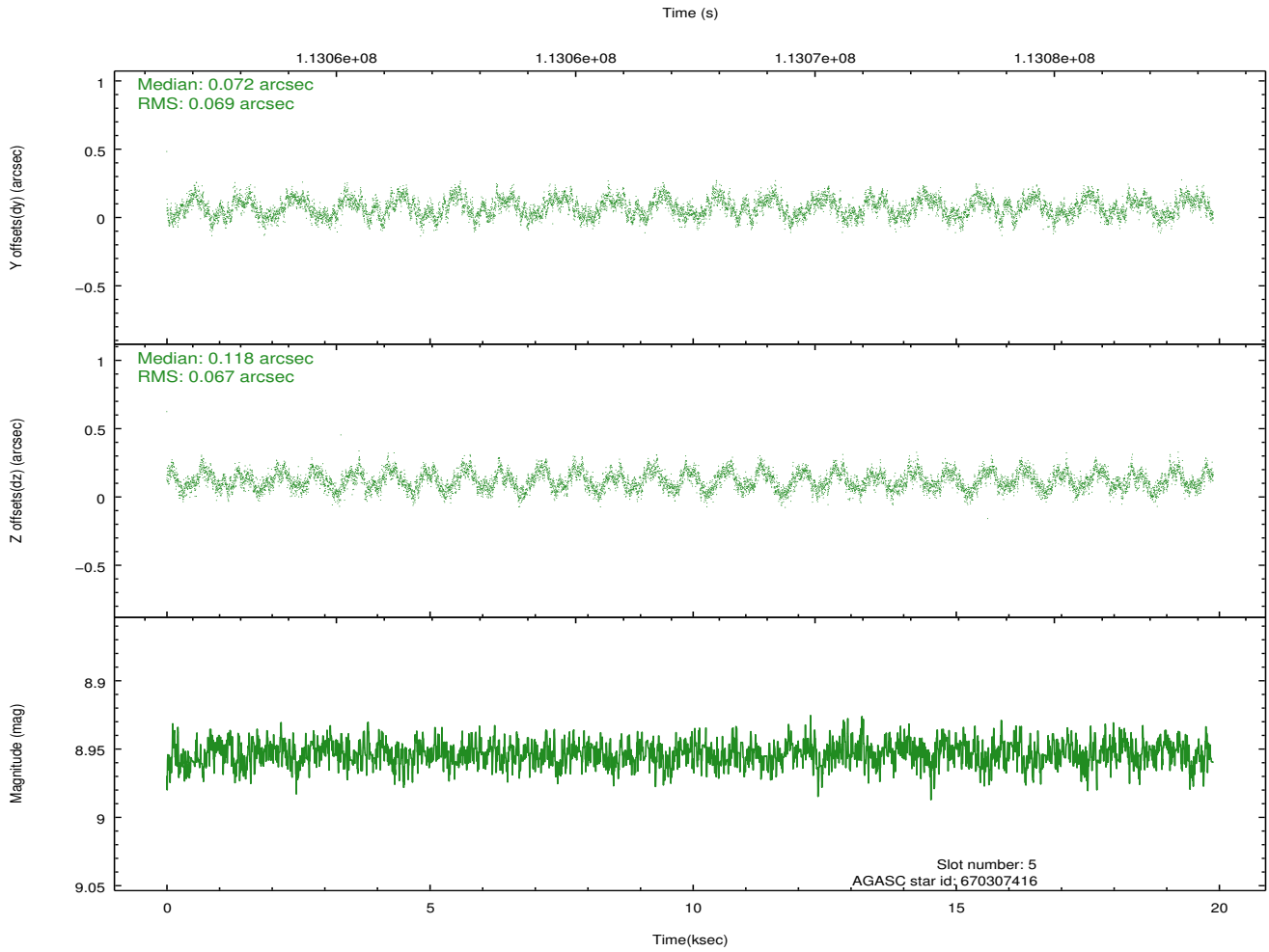
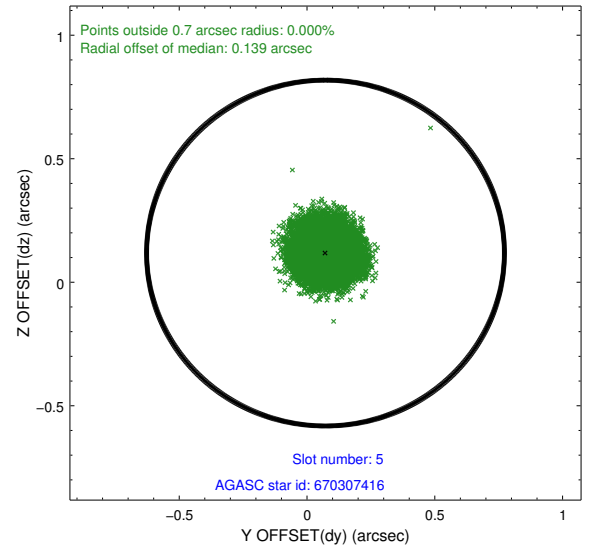
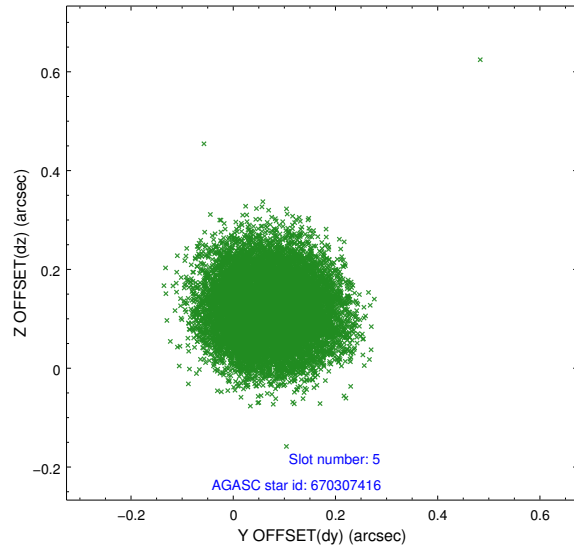
2.4.1 Slot 3



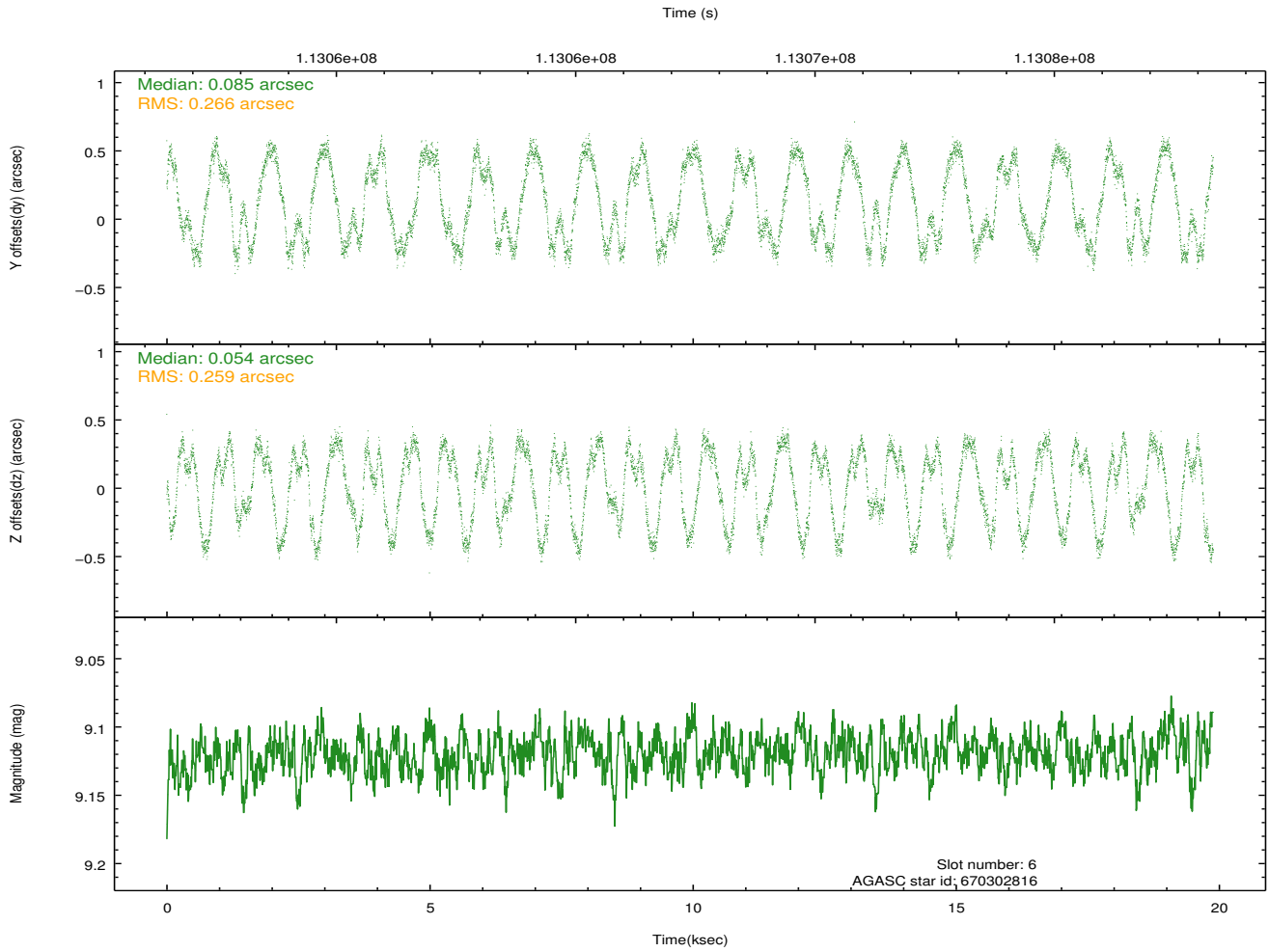
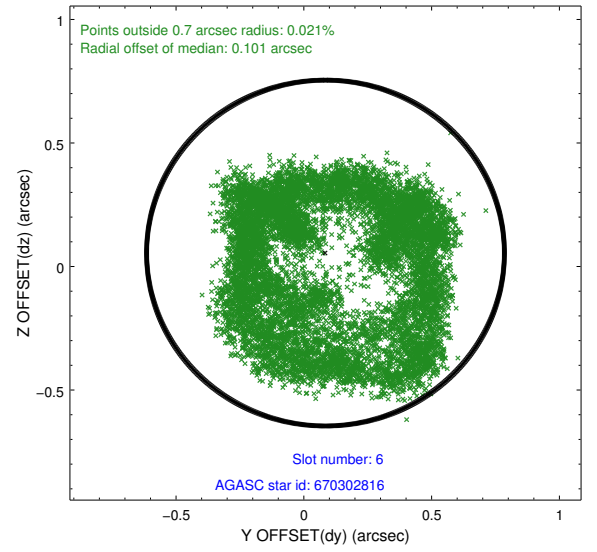
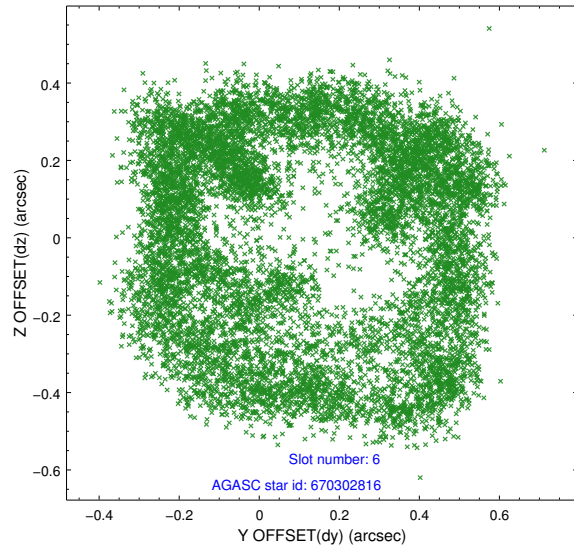
2.4.2 Slot 4



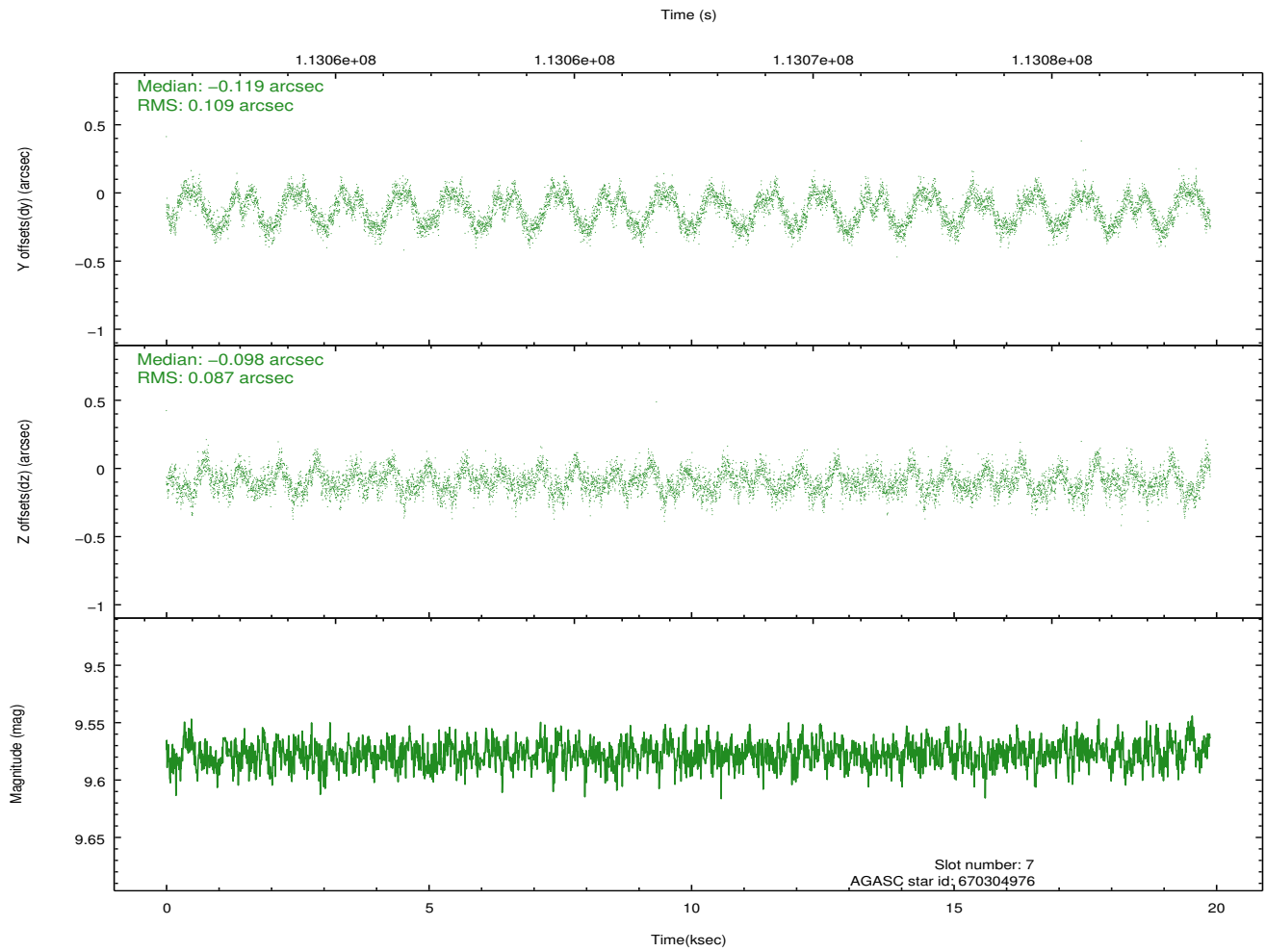
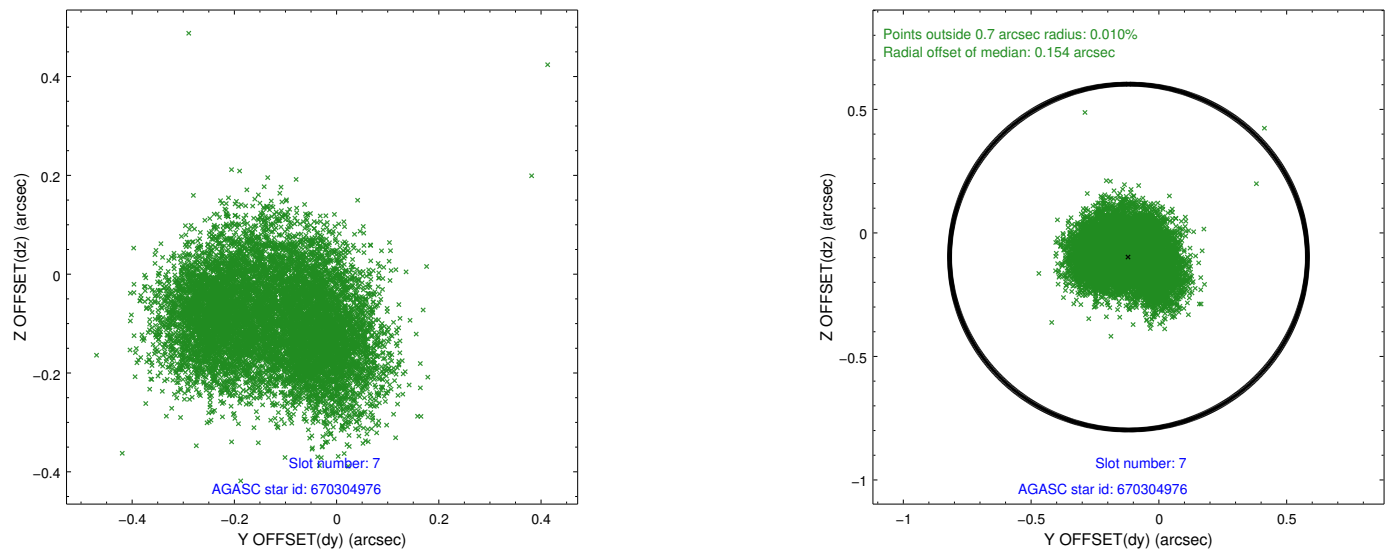
2.4.3 Slot 5



2.4.4 Slot 6

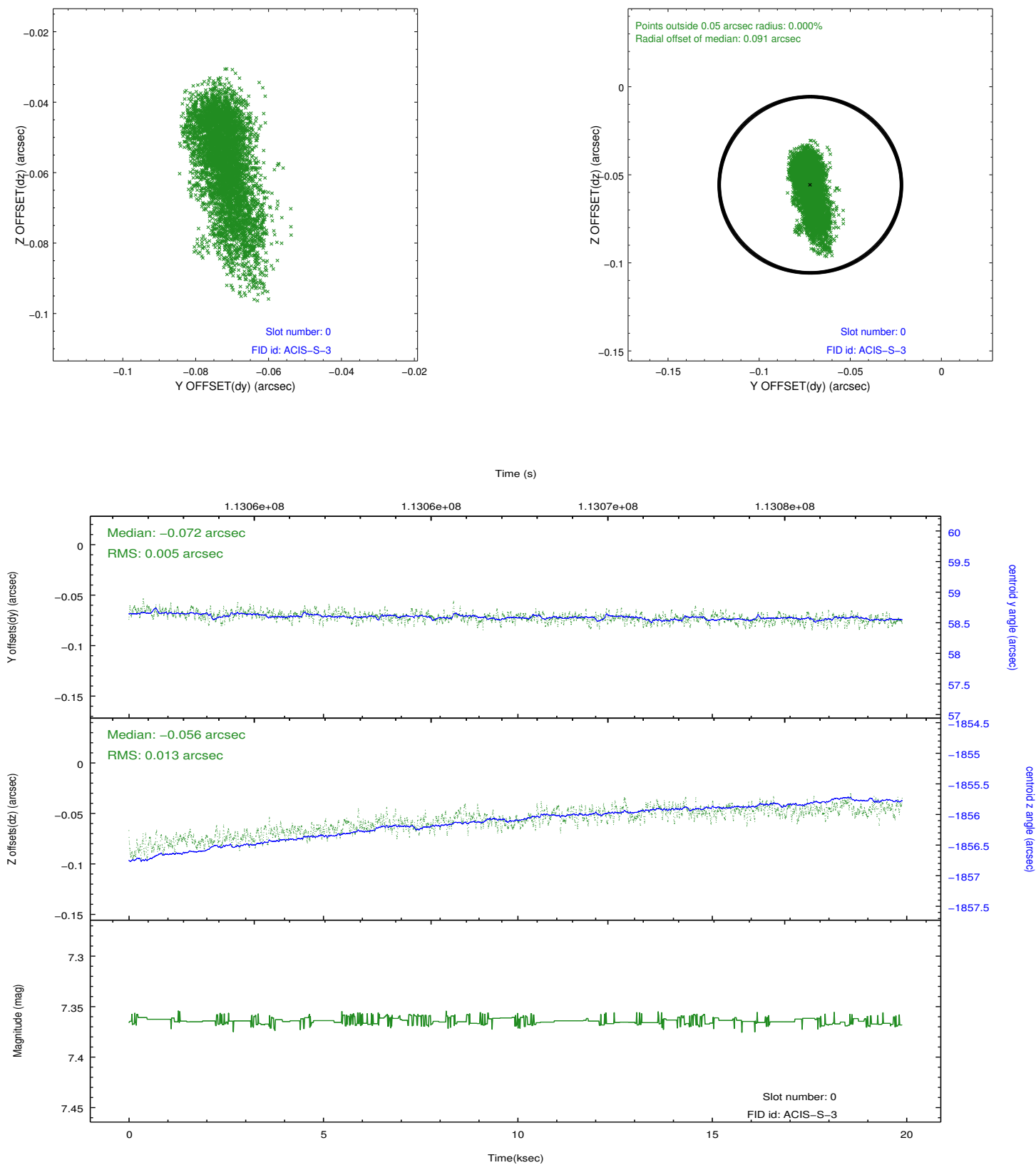


2.4.5 Slot 7

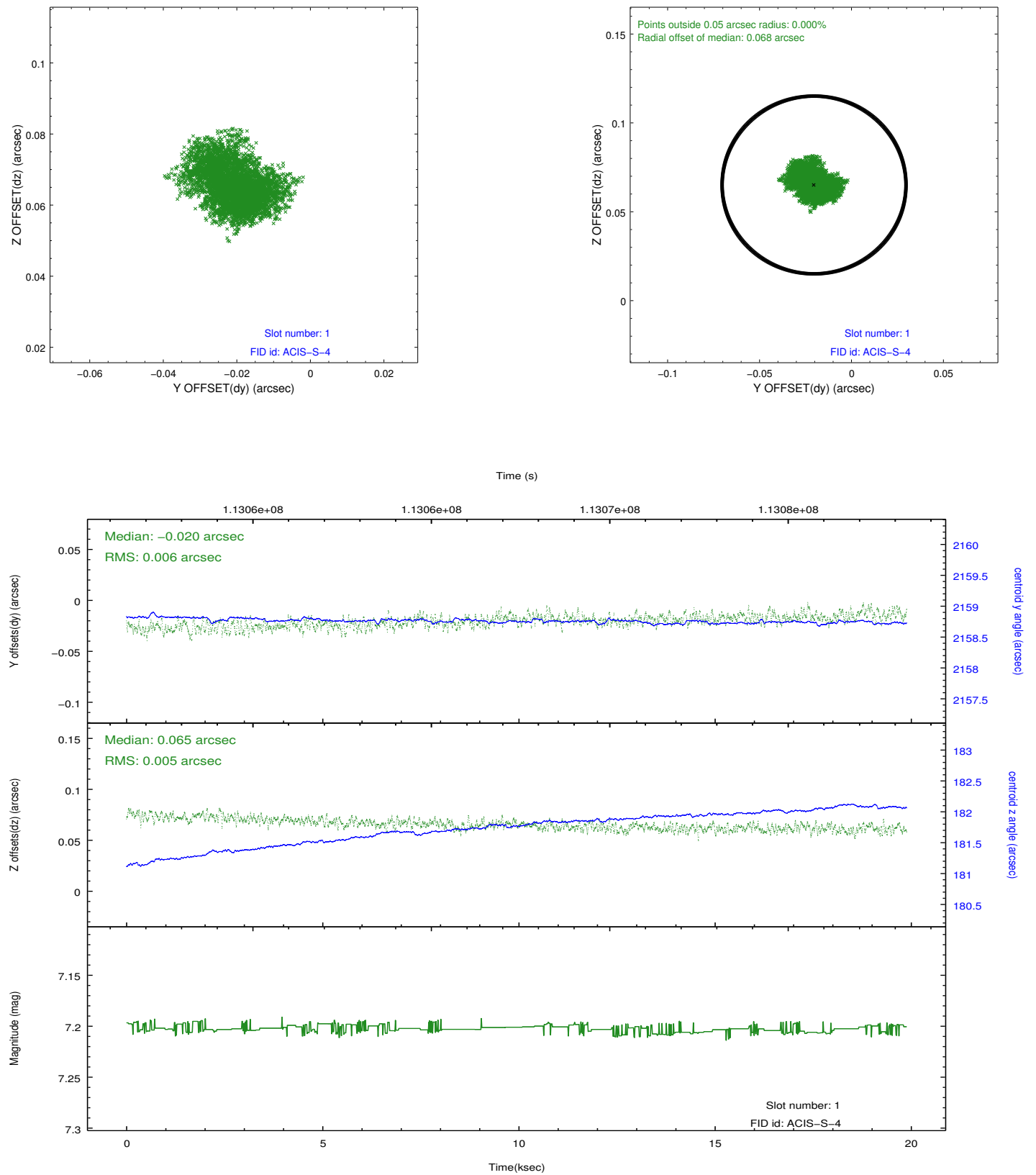


2.5 FID Slots

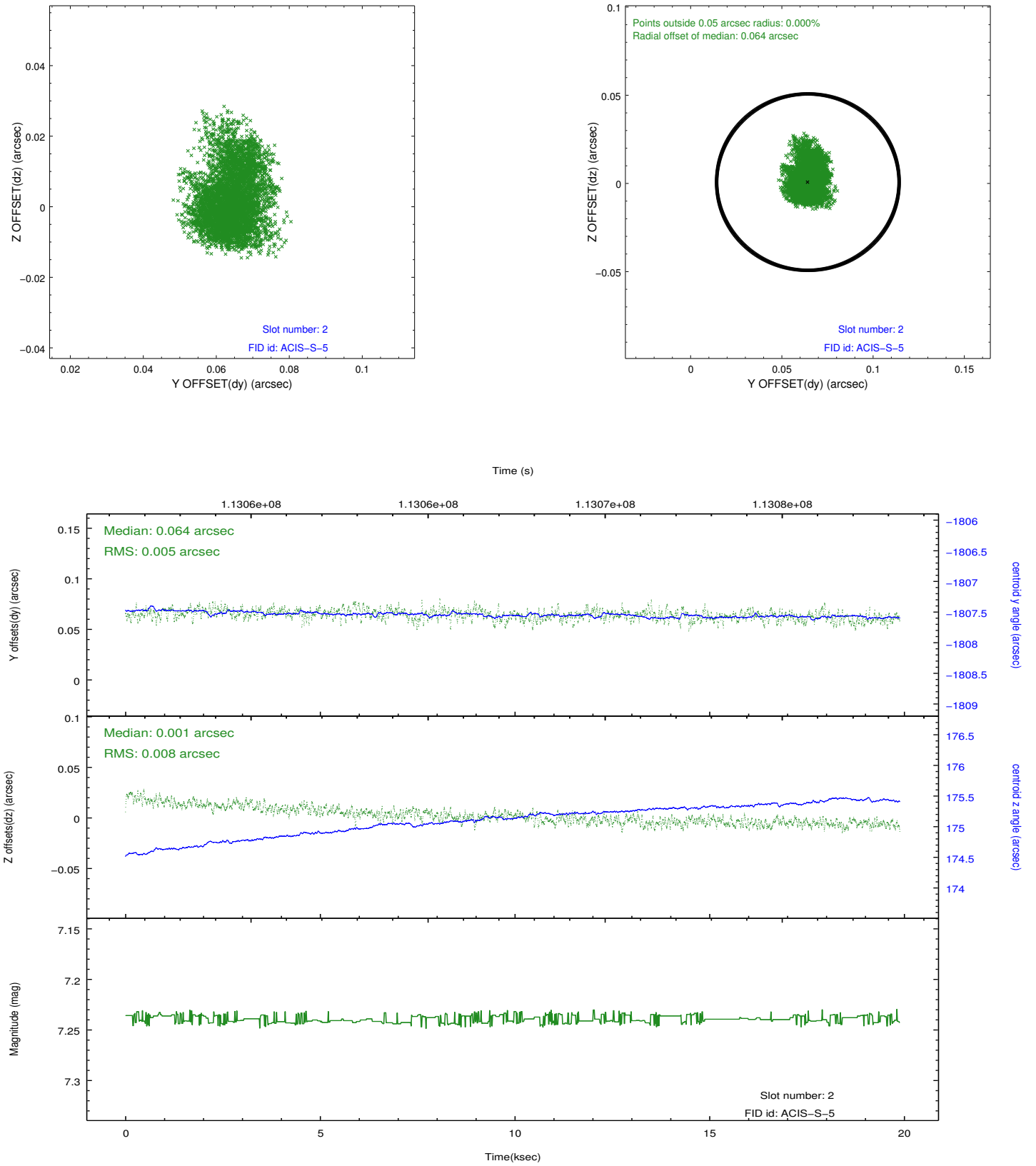
2.5.1 Slot 0



2.5.2 Slot 1



2.5.3 Slot 2



A Summary

A.1 Status

V&V Scientist	Jen Lauer
V&V Date (YYYY-MM-DD)	2012.09.24
V&V Edition	1
V&V Disposition and Status	OK
V&V Charge Time	19.885

A.2 Comments