

# V&V Reference Report

## L2 ASCDS Version : 8.4.5

Observation 973 - L2 Version 3  
Chandra X-Ray Center

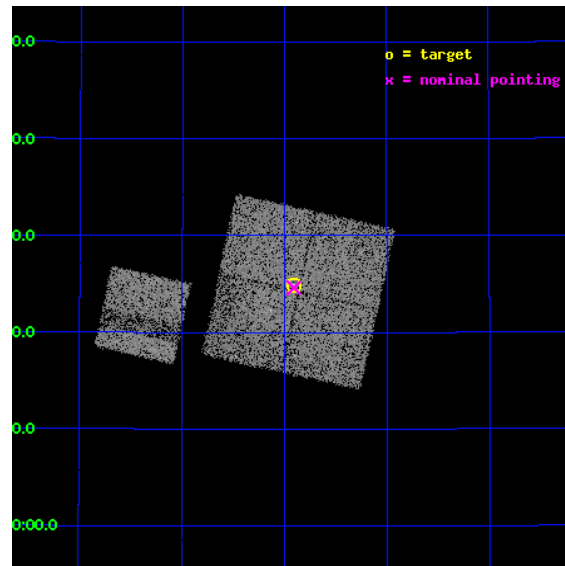
L2 Processing Date : Sep 2 2012

## Contents

<b>1</b>	<b>Front</b>	<b>2</b>
<b>2</b>	<b>OBI</b>	<b>3</b>
2.1	OBI . . . . .	3
2.1.1	Images . . . . .	3
2.1.2	Bias . . . . .	3
2.1.3	Parameters . . . . .	4
2.1.4	Events . . . . .	4
2.2	Compared Parameters . . . . .	5
2.3	Aspect . . . . .	6
2.4	Star Slots . . . . .	9
2.4.1	Slot 3 . . . . .	9
2.4.2	Slot 4 . . . . .	10
2.4.3	Slot 5 . . . . .	11
2.4.4	Slot 6 . . . . .	12
2.4.5	Slot 7 . . . . .	13
2.5	FID Slots . . . . .	14
2.5.1	Slot 0 . . . . .	14
2.5.2	Slot 1 . . . . .	15
2.5.3	Slot 2 . . . . .	16
<b>A</b>	<b>Summary</b>	<b>17</b>
A.1	Status . . . . .	17
A.2	Comments . . . . .	17

# 1 Front

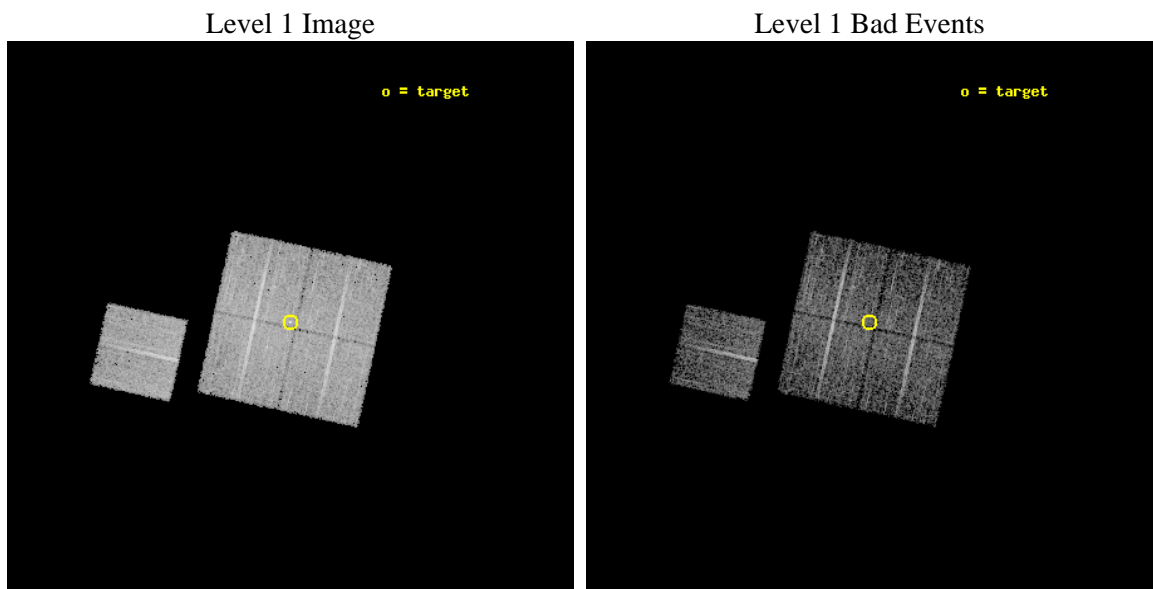
seq_num	200080	Sequence number
obs_id	973	Observation id
title	OBSERVATION OF M-DWARF SYSTEM	Proposal title
observer	Professor Gordon Garmire	Principal investigator
object	G208-45	Source name
dtcycle	0	&#160
cycle	P	events from which exps? Prim/Second/Both
ra_targ	298.478333	Observer's specified target RA [deg]
dec_targ	44.415	Observer's specified target Dec [deg]
ra_nom	298.47703227596	Nominal RA [deg]
dec_nom	44.410265048513	Nominal Dec [deg]
roll_nom	282.37772084175	Nominal Roll [deg]
revision	3	Processing version of data
ontime	5251.399989903	Sum of GTIs [s]
livetime	5182.7865830105	Livetime [s]
ontime0	5251.399989903	Sum of GTIs [s]
ontime1	5251.399989903	Sum of GTIs [s]
ontime2	5251.399989903	Sum of GTIs [s]
ontime3	5251.399989903	Sum of GTIs [s]
ontime6	5251.399989903	Sum of GTIs [s]
l2events	39112	Number of level 2 events



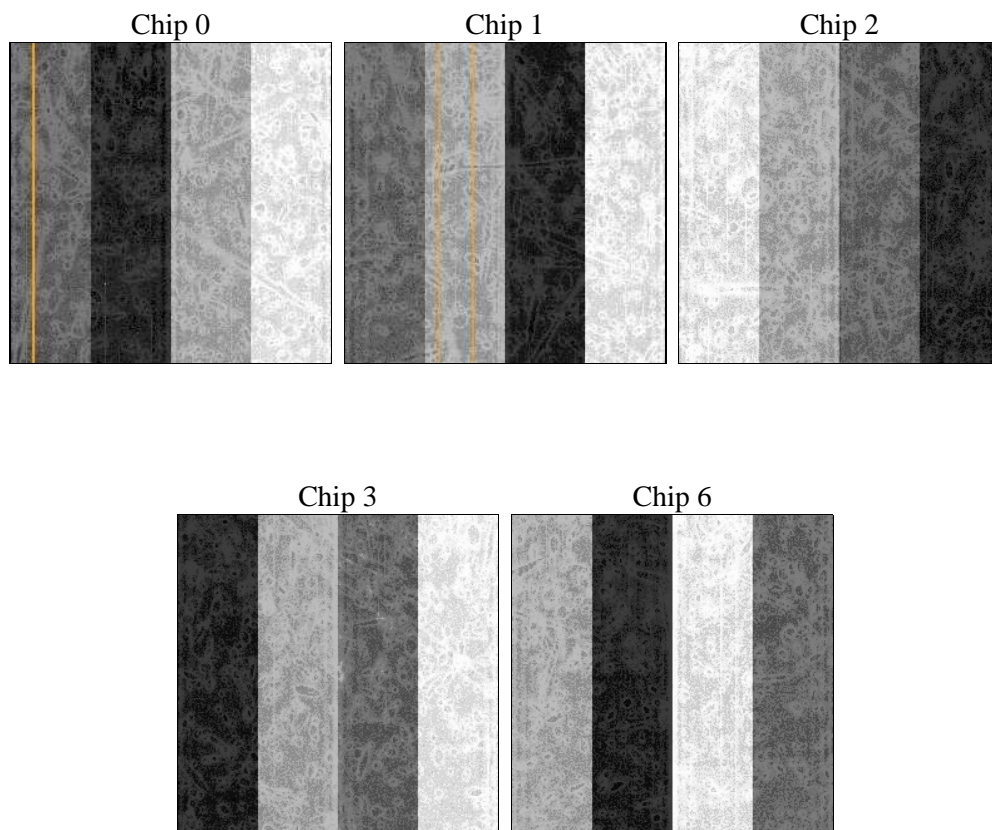
## 2 OBI

### 2.1 OBI

#### 2.1.1 Images



#### 2.1.2 Bias



### 2.1.3 Parameters

obi_num	0	Obi number	sched_exp_time	5075.000000	[s] Scheduled observation exposure time
ascdsver	8.4.5	Processing system revision	ontime	5251.399989903	Sum of GTIs [s]
caldsver	4.5.1.1	&#160	ontime0	5251.399989903	Sum of GTIs [s]
date	2012-09-02T23:36:34	Date and time of file creation	ontime1	5251.399989903	Sum of GTIs [s]
revision	3	Processing version of data	ontime2	5251.399989903	Sum of GTIs [s]
			ontime3	5251.399989903	Sum of GTIs [s]
			ontime6	5251.399989903	Sum of GTIs [s]
			l1events	213352	Number of level 1 events

### 2.1.4 Events

	ccd 0	ccd 1	ccd 2	ccd 3	ccd 6
level 1 events	40764	39915	44602	44943	43128
rejected events	31905	31018	35876	35788	34368
rejected %	78%	77%	80%	79%	79%

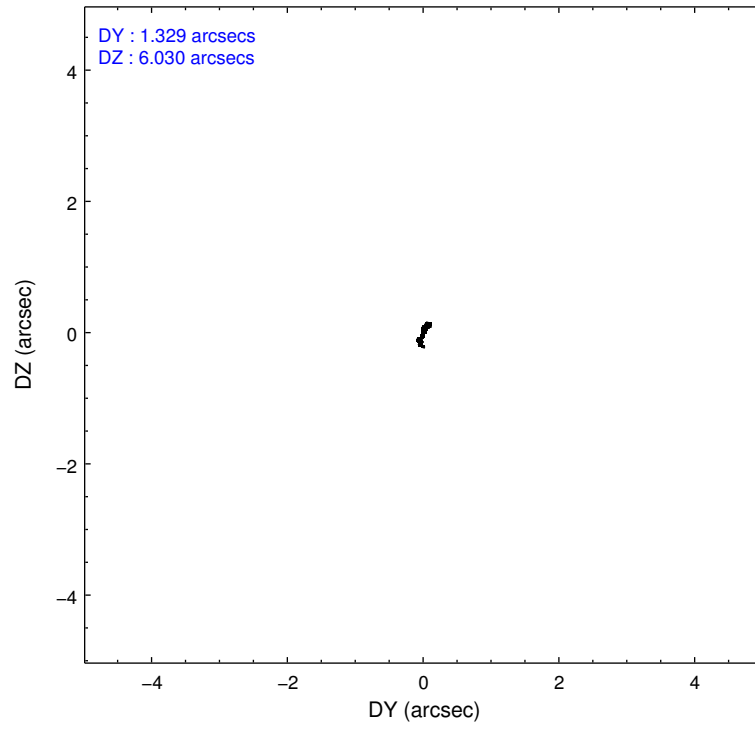
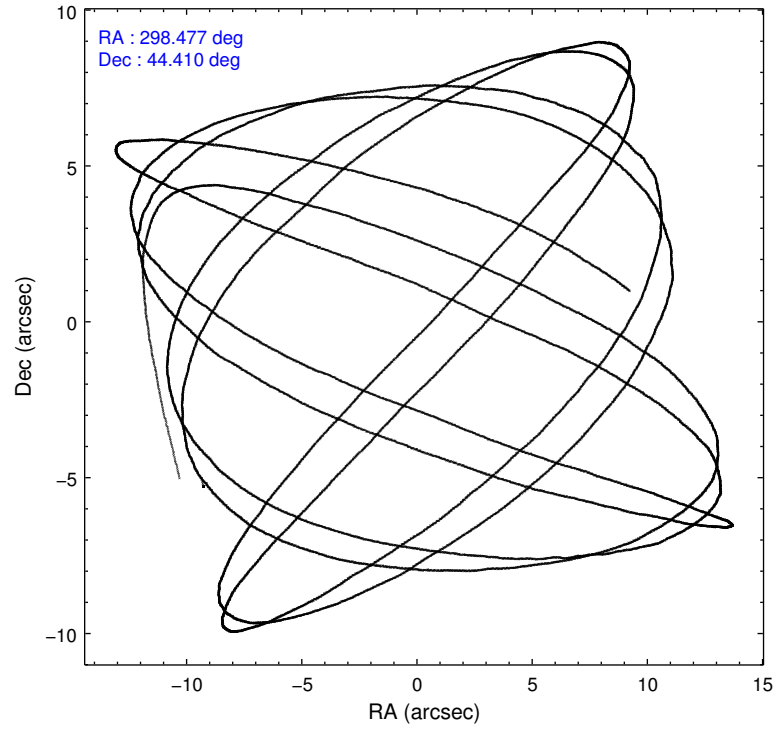
	ccd 0	ccd 1	ccd 2	ccd 3	ccd 6
grade 0 events	4061	3697	4216	4088	4053
	9%	9%	9%	9%	9%
grade 1 events	24	27	25	40	29
	0%	0%	0%	0%	0%
grade 2 events	2526	2812	2238	2717	2481
	6%	7%	5%	6%	5%
grade 3 events	476	529	432	500	479
	1%	1%	0%	1%	1%
grade 4 events	538	547	534	527	521
	1%	1%	1%	1%	1%
grade 5 events	1260	1352	1226	1331	1438
	3%	3%	2%	2%	3%
grade 6 events	1709	1750	1749	1790	1672
	4%	4%	3%	3%	3%
grade 7 events	30170	29201	34182	33950	32455
	74%	73%	76%	75%	75%

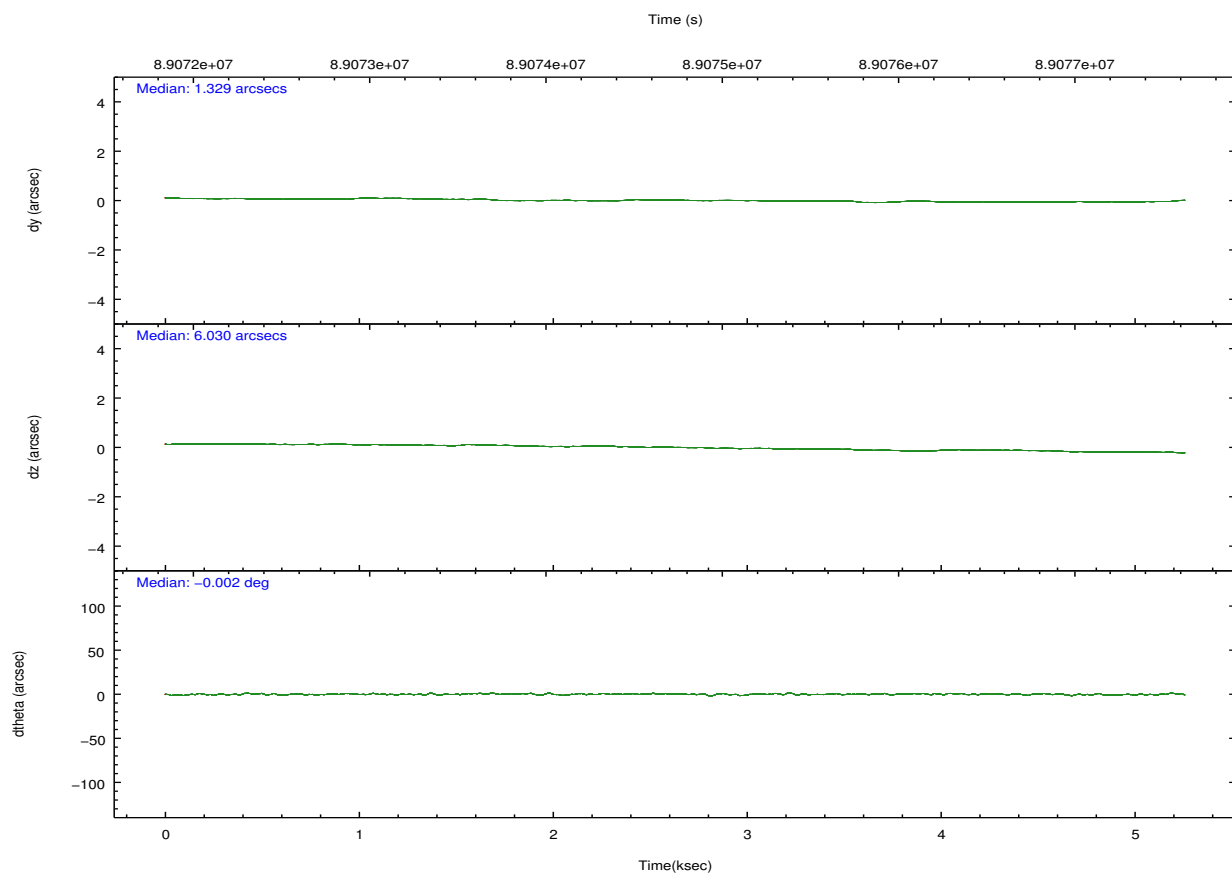
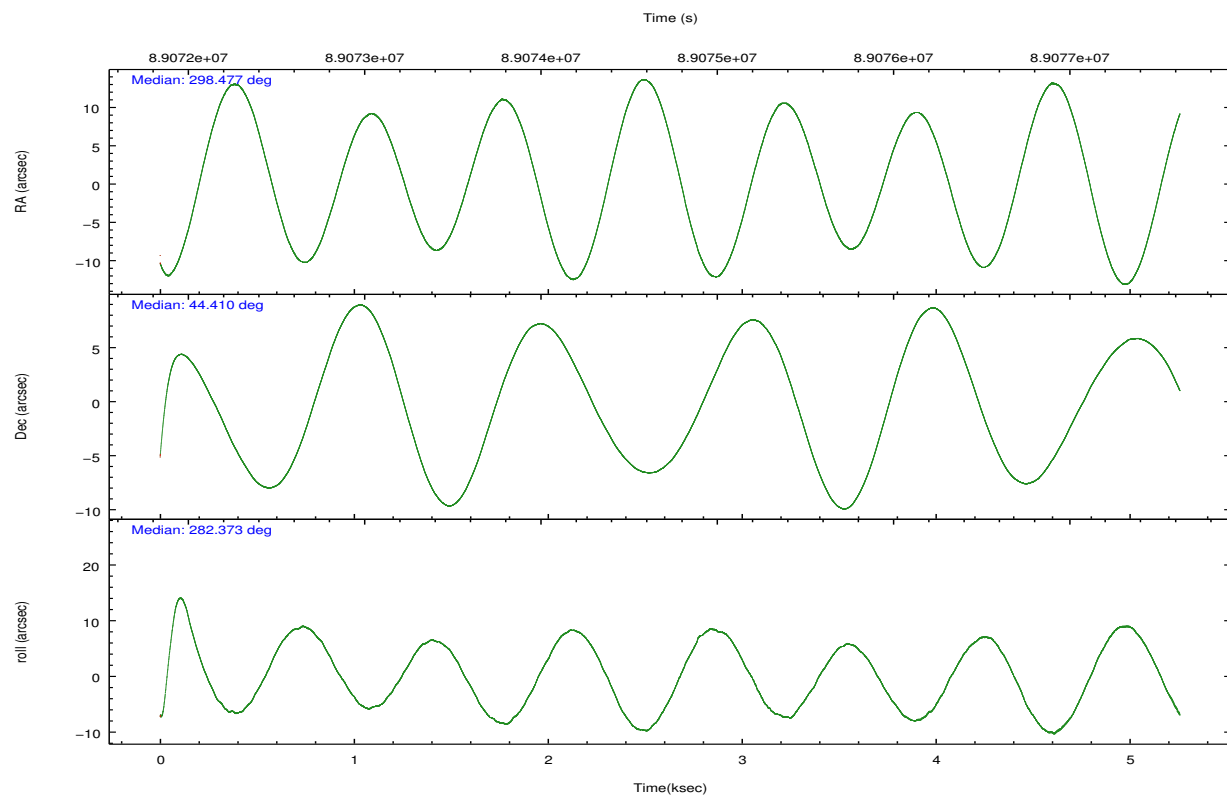


## 2.2 Compared Parameters

Parameter	Planned	Actual	Parameter	Planned	Actual
Instrument	ACIS	ACIS	Obspar format version number	7	7
Detector	ACIS-01236	ACIS-01236	Obspar file type	PREDICTED	ACTUAL
Grating	NONE	NONE	Obspar update status	NONE	UPDATED
Data mode	FAINT	FAINT	Number of optional ACIS chips dropped	0	0
Observation mode	POINTING	POINTING	On-chip summing requested	N	N
[deg] Pointing RA	298.451177	298.4770322759614	Subarray requested	NONE	NONE
[deg] Pointing Dec	44.430599	44.41026504851286	Alternating exposures requested	N	N
[deg] Pointing Roll	282.187187	282.3777208417478	[s] Primary exposure time	0.000000	3.1
[mm] SIM focus pos	-0.782348	-0.7809083437167272			
[mm] SIM defocus	0	0.001439871863259334			
[mm] SIM translation stage pos	-233.592463	-233.5874344608287			
[mm] SIM translation stage offset	0	-0.005018542100998502			
[s] Observation start time (MET)	89072287.184000	89071162.361919			
Observation start date	2000-10-27T22:17:03	2000-10-27T21:59:22			
[s] Observation end time (MET)	89077362.184000	89077897.12467299			
Observation end date	2000-10-27T23:41:38	2000-10-27T23:51:37			
Read mode	TIMED	TIMED			

## 2.3 Aspect



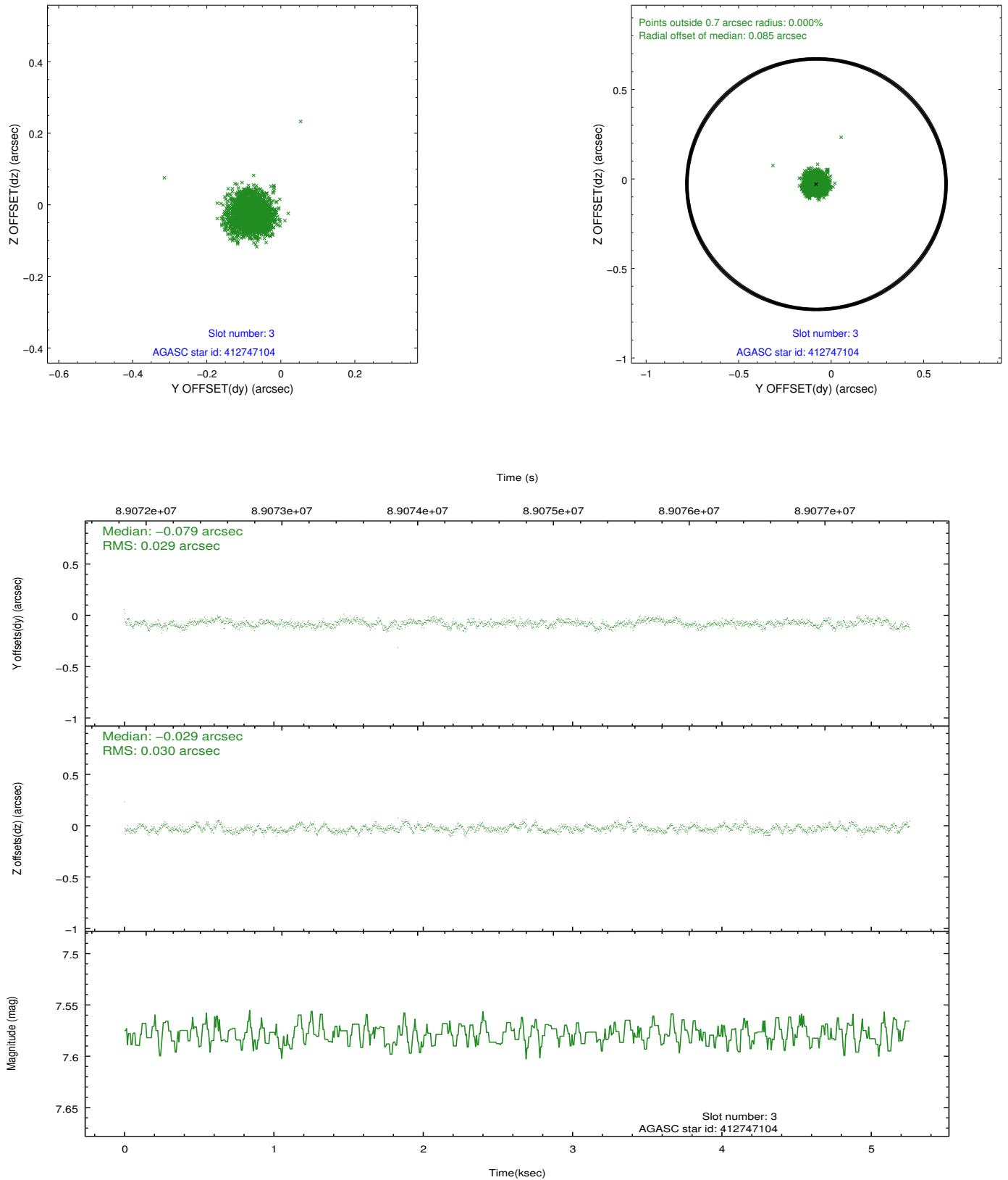


### Slot Statistics

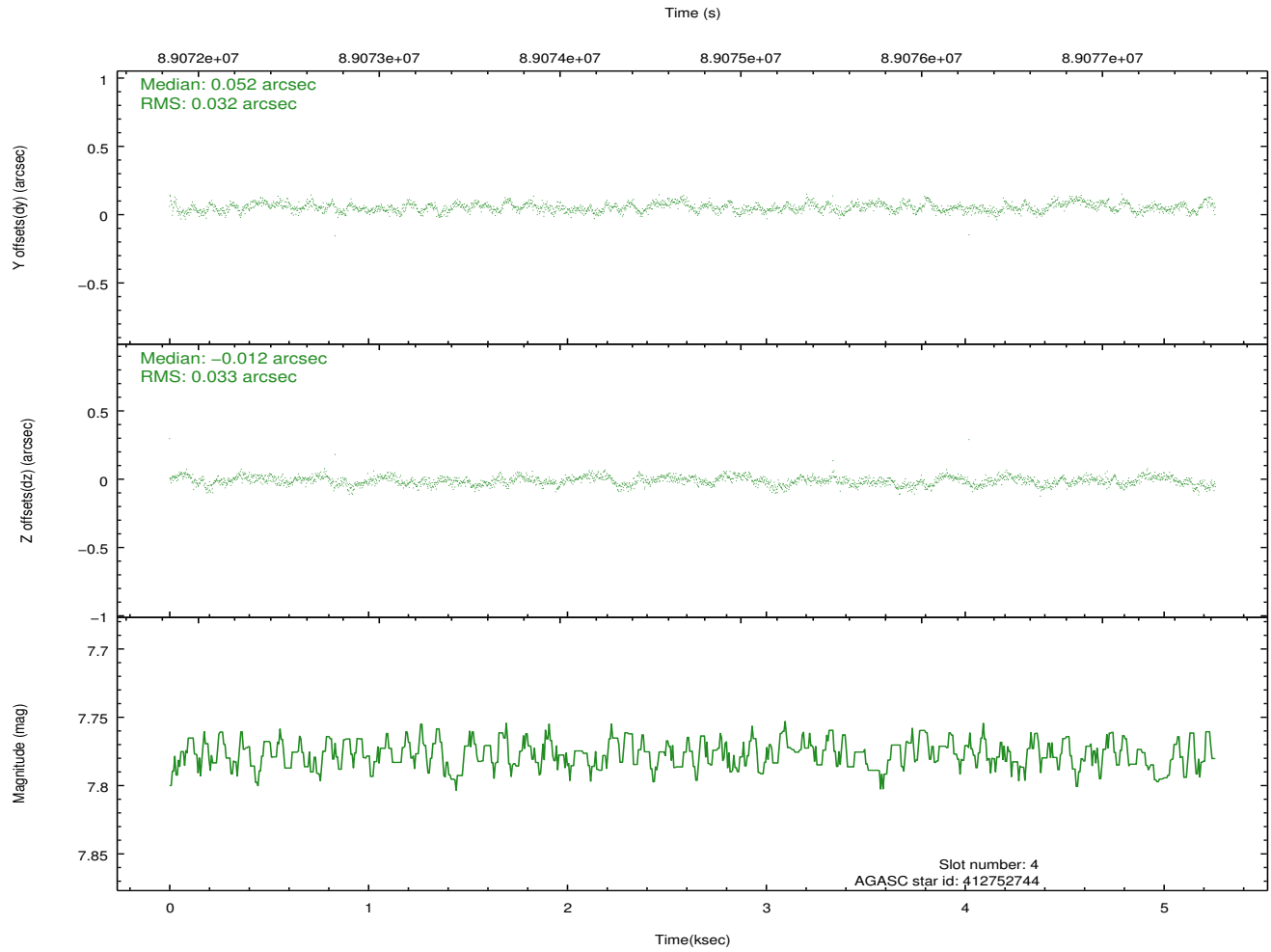
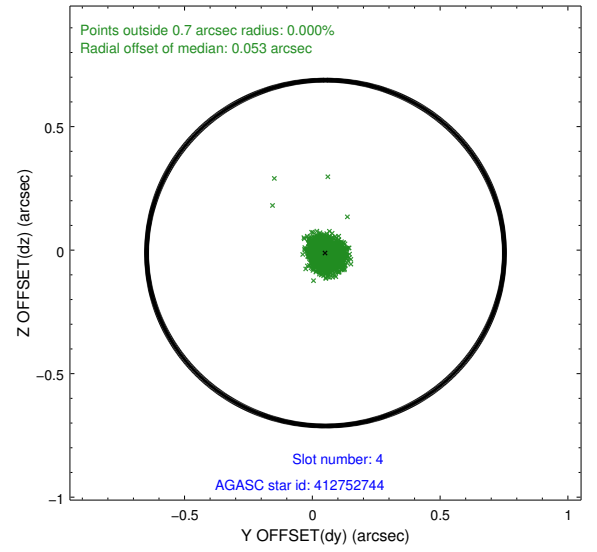
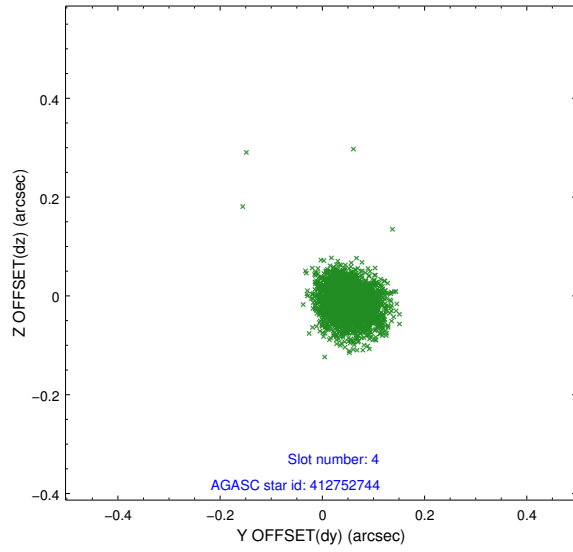
slot	status	id	mag	n_pts	med_dy	med_dz	dr1	dr2	ra	dec	mean_y	mean_z
0	FID	ACIS-I-2	7.15	1283	-0.033	-0.057	0.009	0.015	0.000000	0.000000	-755.70	-835.81
1	FID	ACIS-I-4	7.18	1283	-0.057	0.042	0.006	0.010	0.000000	0.000000	2157.81	1069.90
2	FID	ACIS-I-5	7.23	1283	-0.011	0.084	0.008	0.014	0.000000	0.000000	-1808.03	1069.08
3	GUIDE	412747104	7.58	2566	-0.079	-0.029	0.044	0.070	298.561342	44.847319	-1406.77	592.19
4	GUIDE	412752744	7.78	2566	0.052	-0.012	0.047	0.076	299.032333	44.826300	-1084.42	1753.16
5	GUIDE	412752224	7.22	2565	0.019	-0.001	0.044	0.069	298.394975	44.135752	1007.04	-364.47
6	GUIDE	412752872	8.54	2565	-0.066	0.044	0.058	0.094	298.112006	44.688270	-1090.74	-651.75
7	GUIDE	412760496	8.80	2499	0.077	-0.000	0.089	0.139	298.220099	43.779237	2164.90	-1081.44

## 2.4 Star Slots

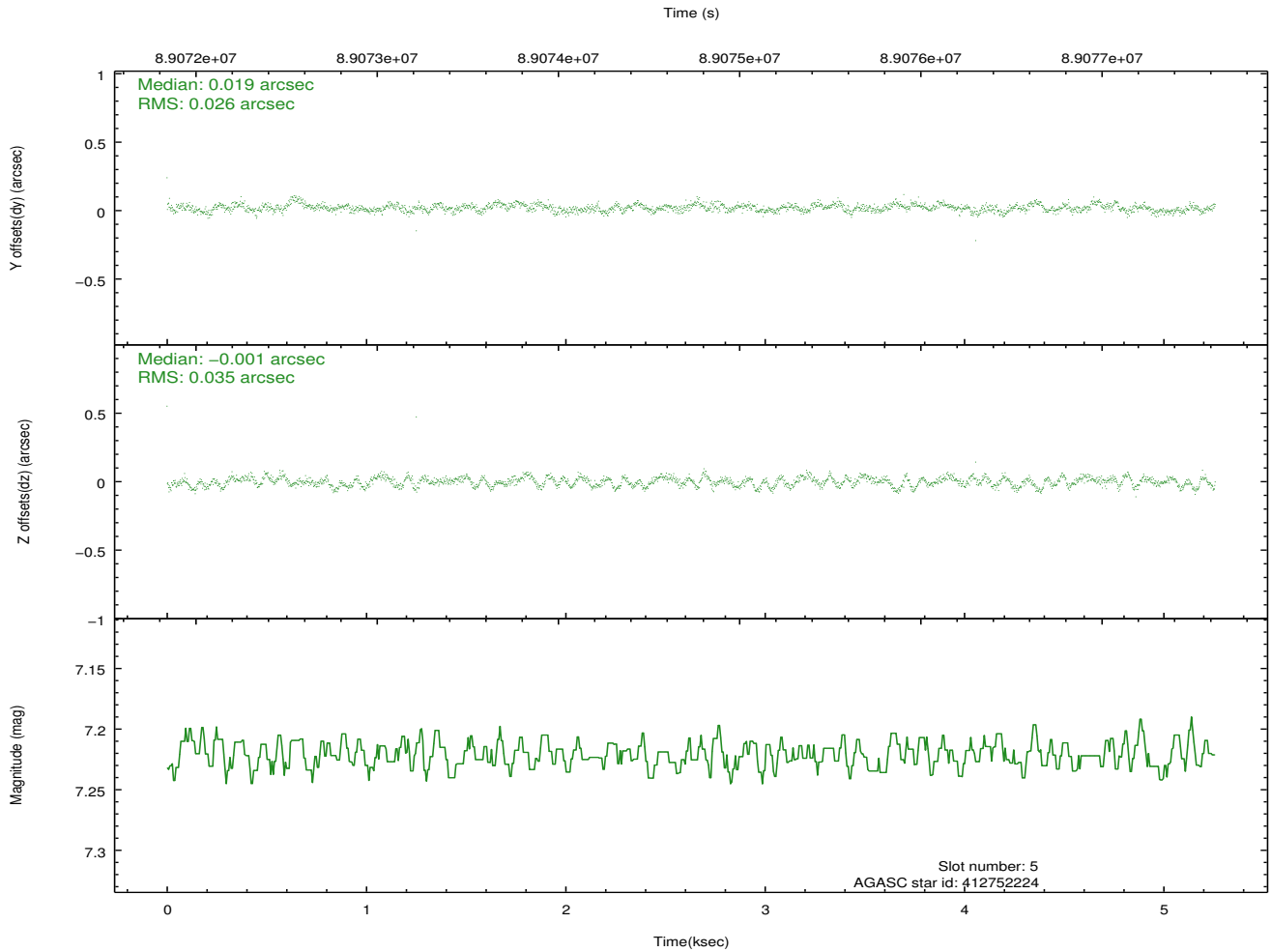
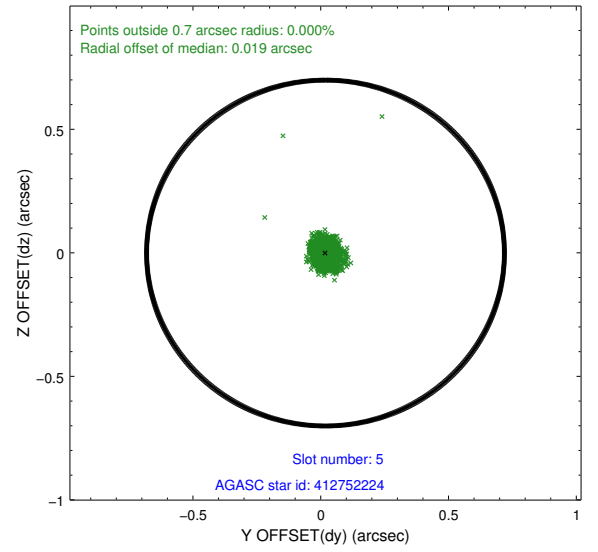
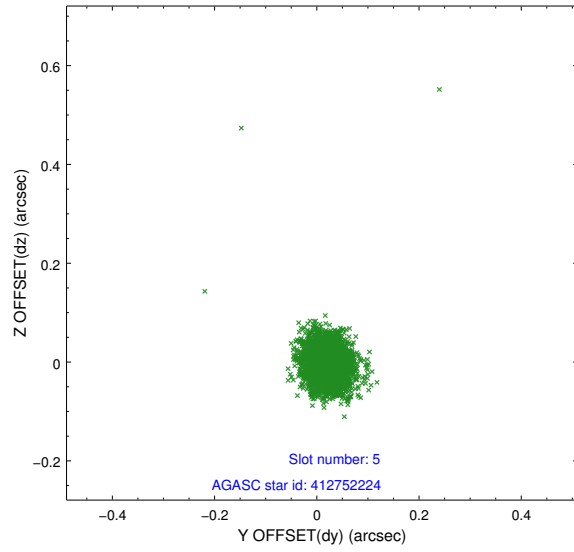
### 2.4.1 Slot 3



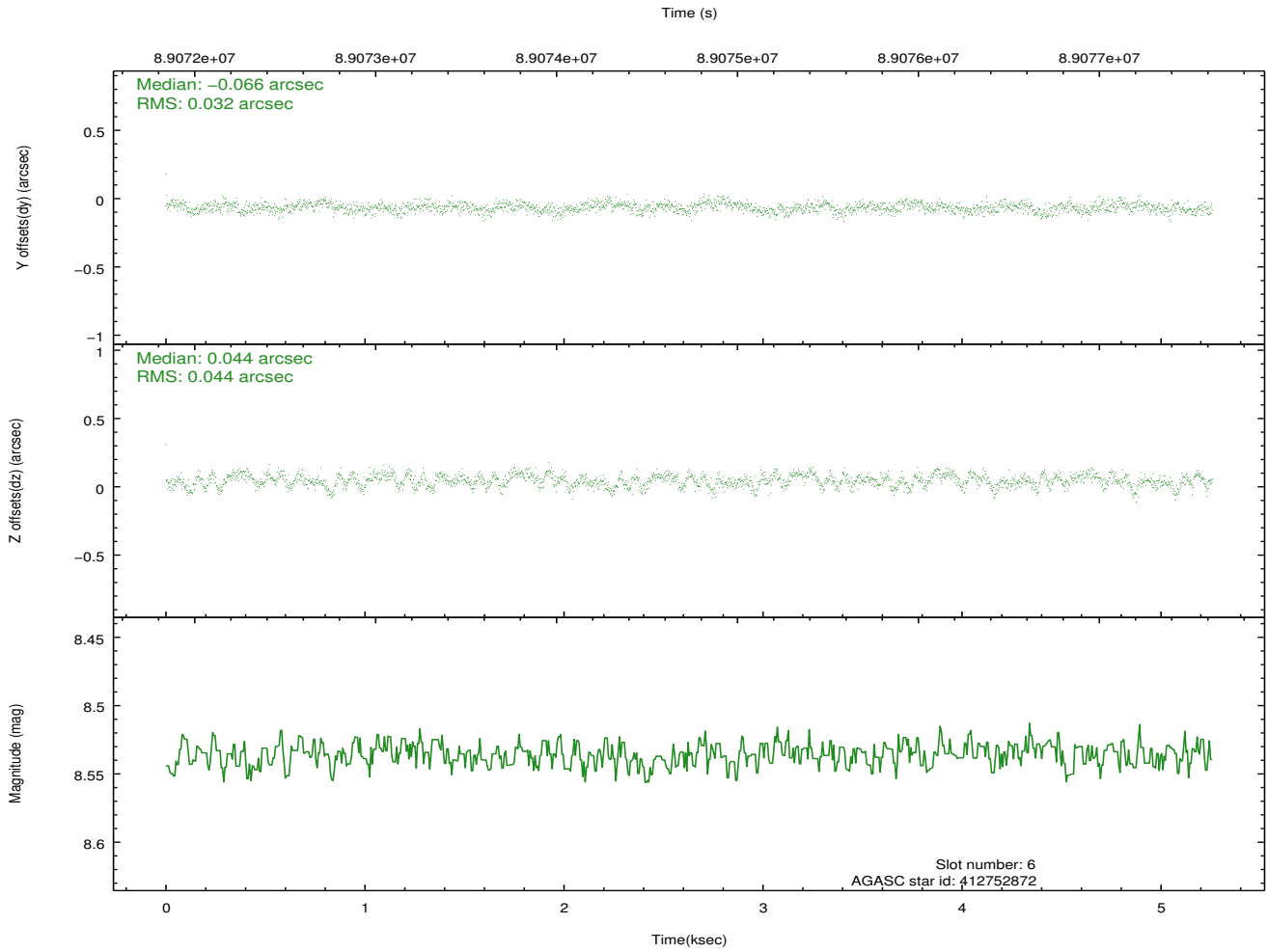
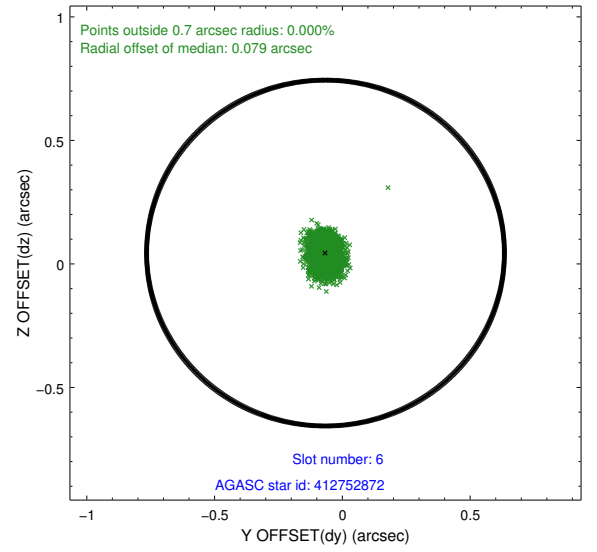
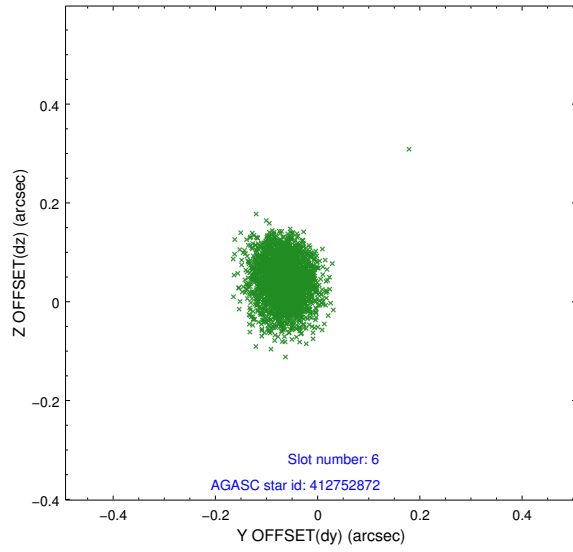
## 2.4.2 Slot 4



### 2.4.3 Slot 5

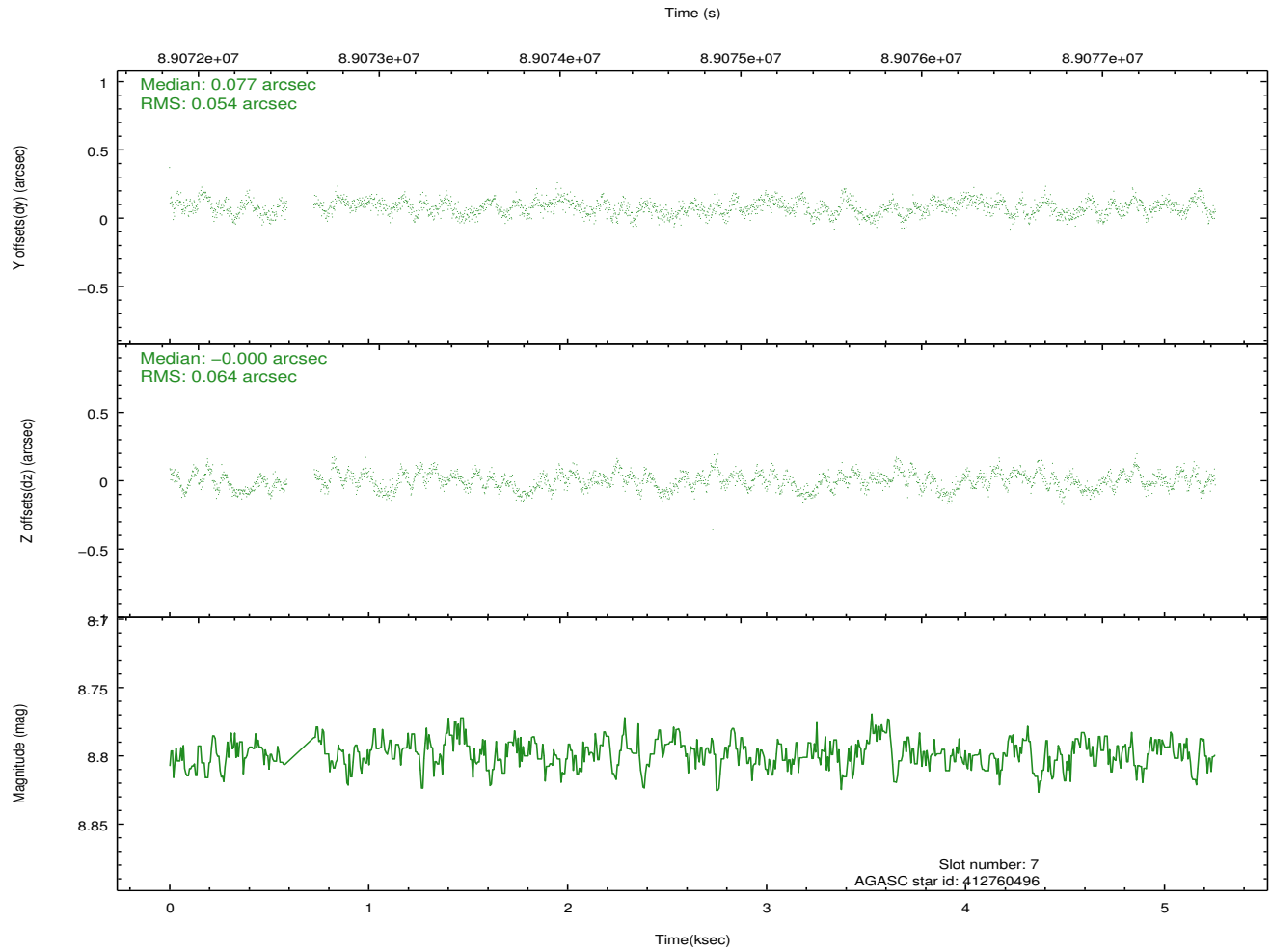
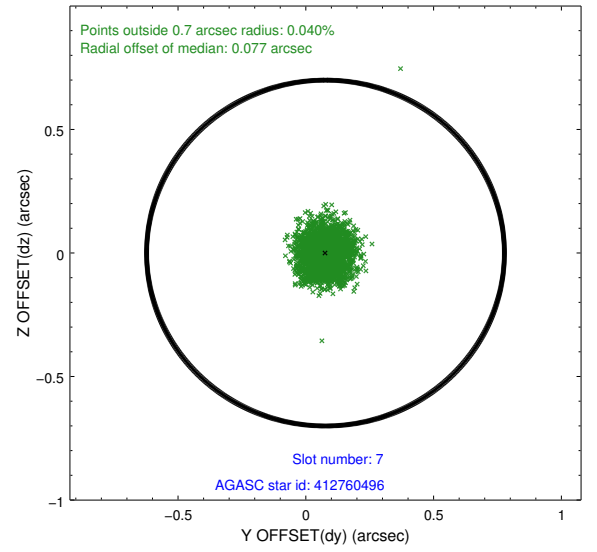
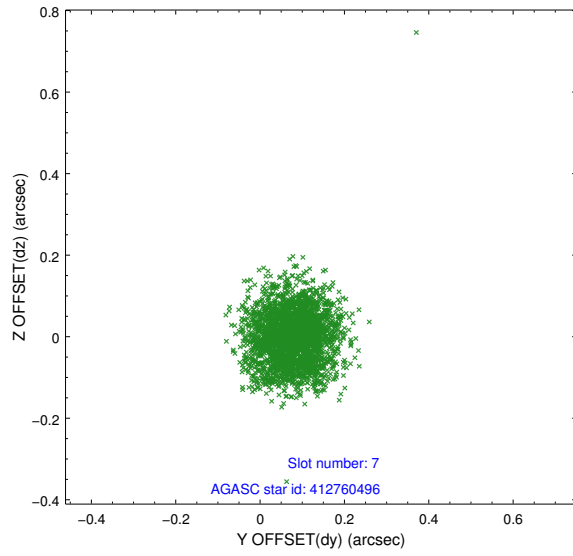


## 2.4.4 Slot 6



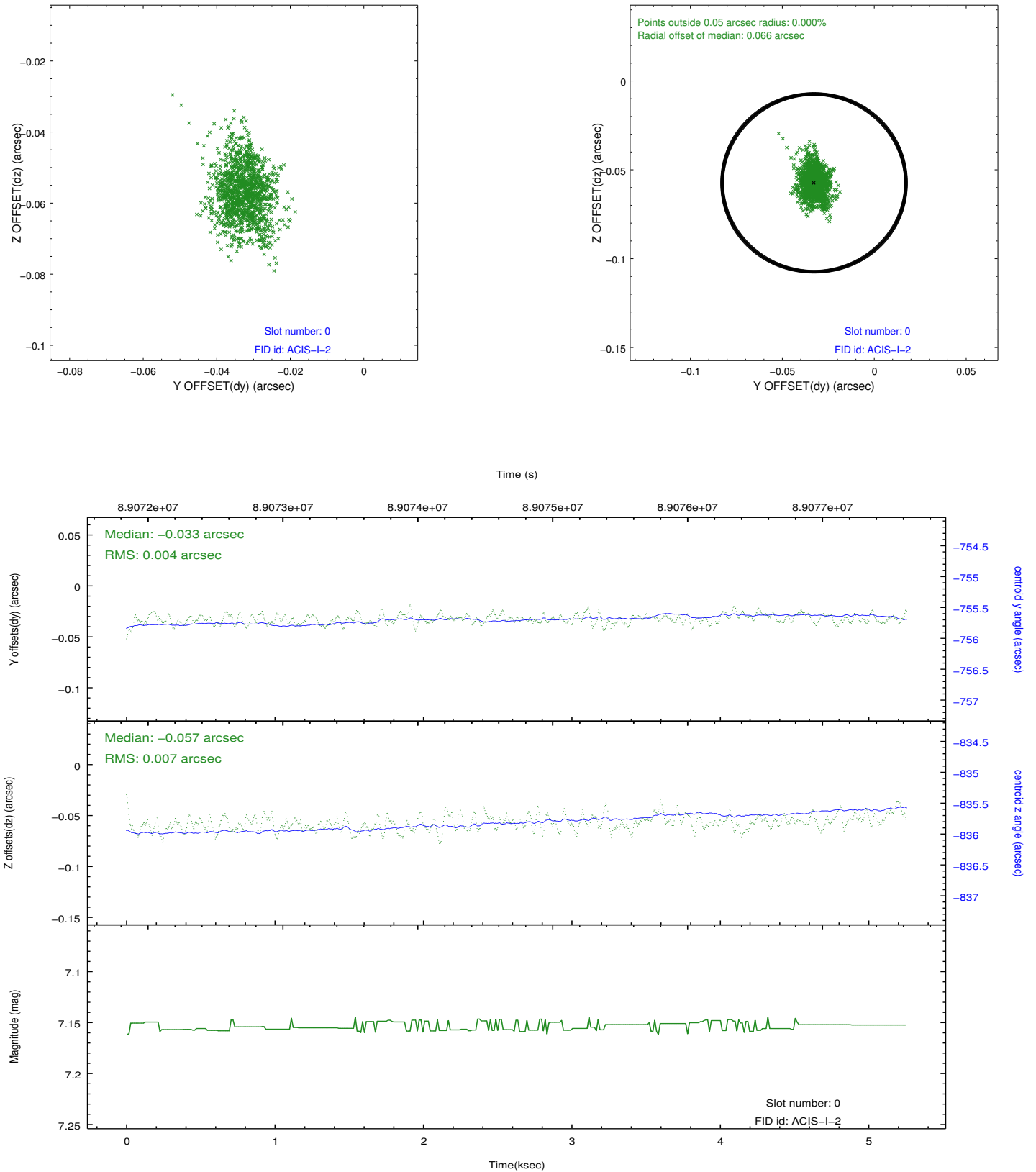


## 2.4.5 Slot 7

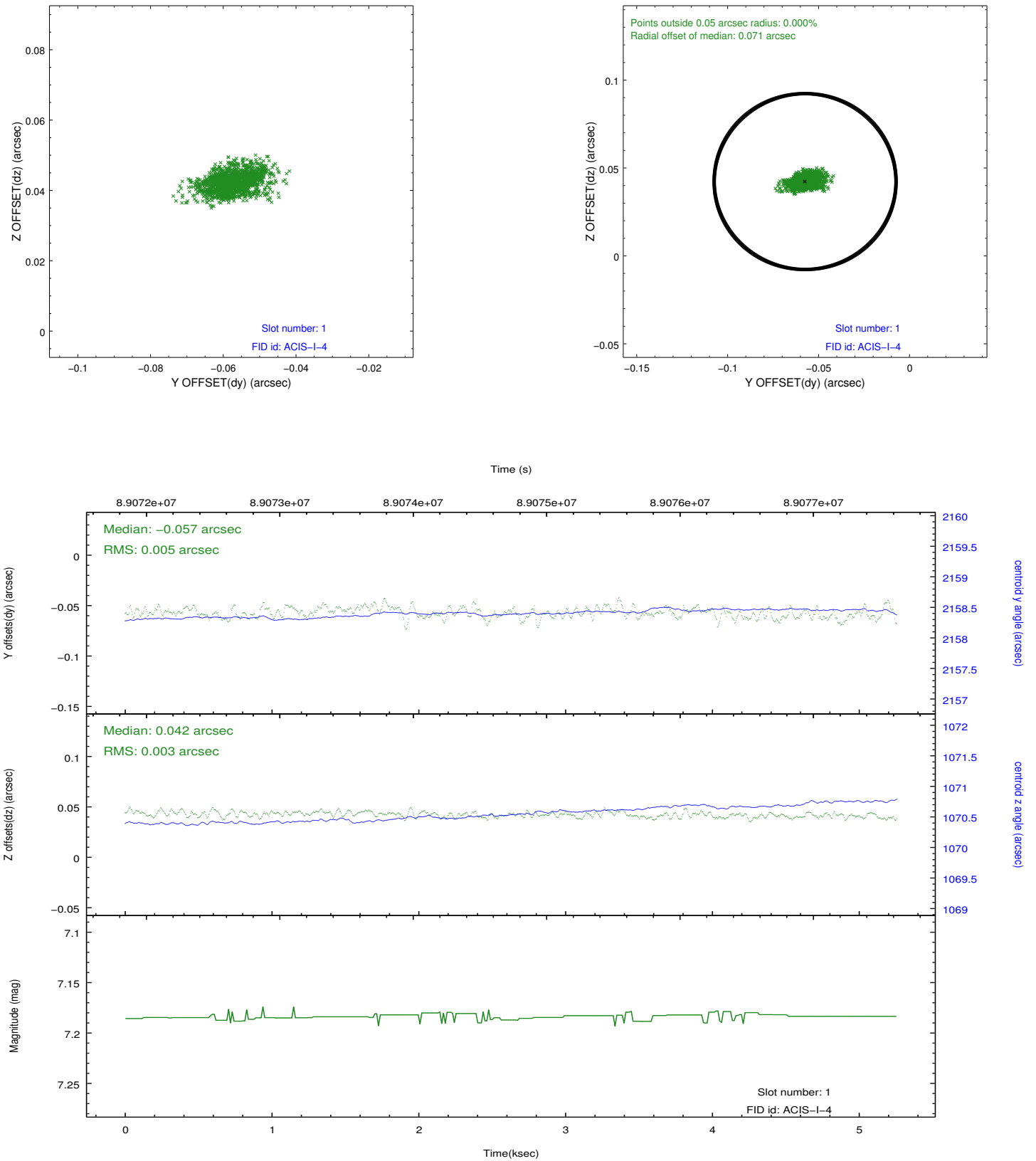


## 2.5 FID Slots

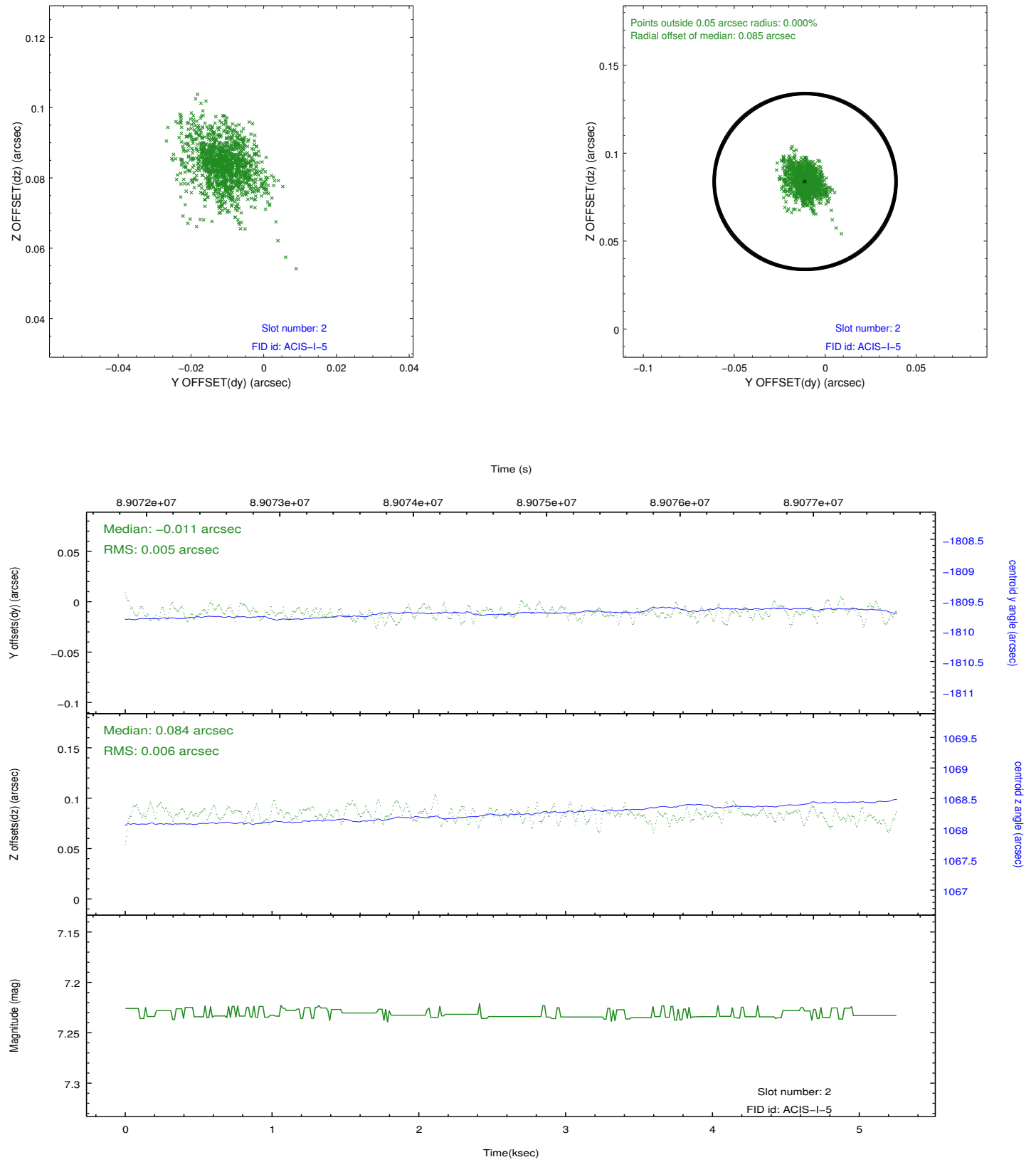
### 2.5.1 Slot 0



## 2.5.2 Slot 1



### 2.5.3 Slot 2



## A Summary

### A.1 Status

V&V Scientist	Beth Sundheim
V&V Date (YYYY-MM-DD)	2012.09.10
V&V Edition	1
V&V Disposition and Status	OK
V&V Charge Time	5.251

### A.2 Comments