

# V&V Reference Report

## L2 ASCDS Version : 7.6.10

Observation 973 - L2 Version 001  
Chandra X-Ray Center

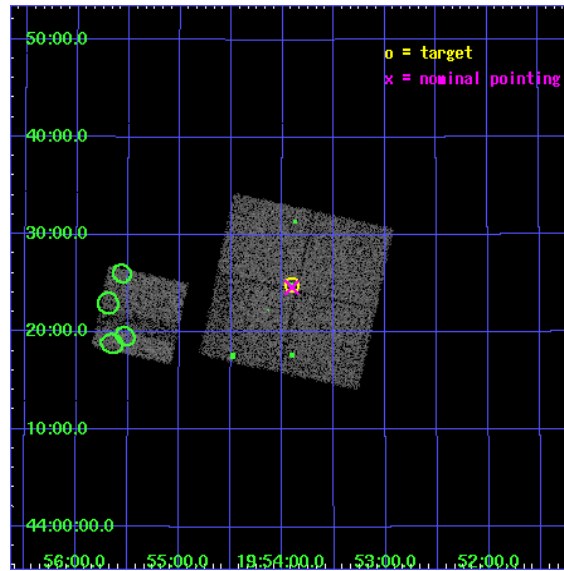
L2 Processing Date : Jun 14 2007

## Contents

<b>1</b>	<b>Front</b>	<b>2</b>
<b>2</b>	<b>OBI</b>	<b>3</b>
2.1	OBI . . . . .	3
2.1.1	Images . . . . .	3
2.1.2	Bias . . . . .	3
2.1.3	Parameters . . . . .	4
2.1.4	Events . . . . .	4
2.2	Compared Parameters . . . . .	5
2.3	Aspect . . . . .	6
2.4	Star Slots . . . . .	9
2.4.1	Slot 3 . . . . .	9
2.4.2	Slot 4 . . . . .	10
2.4.3	Slot 5 . . . . .	11
2.4.4	Slot 6 . . . . .	12
2.4.5	Slot 7 . . . . .	13
2.5	FID Slots . . . . .	14
2.5.1	Slot 0 . . . . .	14
2.5.2	Slot 1 . . . . .	15
2.5.3	Slot 2 . . . . .	16
<b>3</b>	<b>Point Sources</b>	<b>17</b>
<b>A</b>	<b>Summary</b>	<b>18</b>
A.1	Status . . . . .	18
A.2	Comments . . . . .	18

# 1 Front

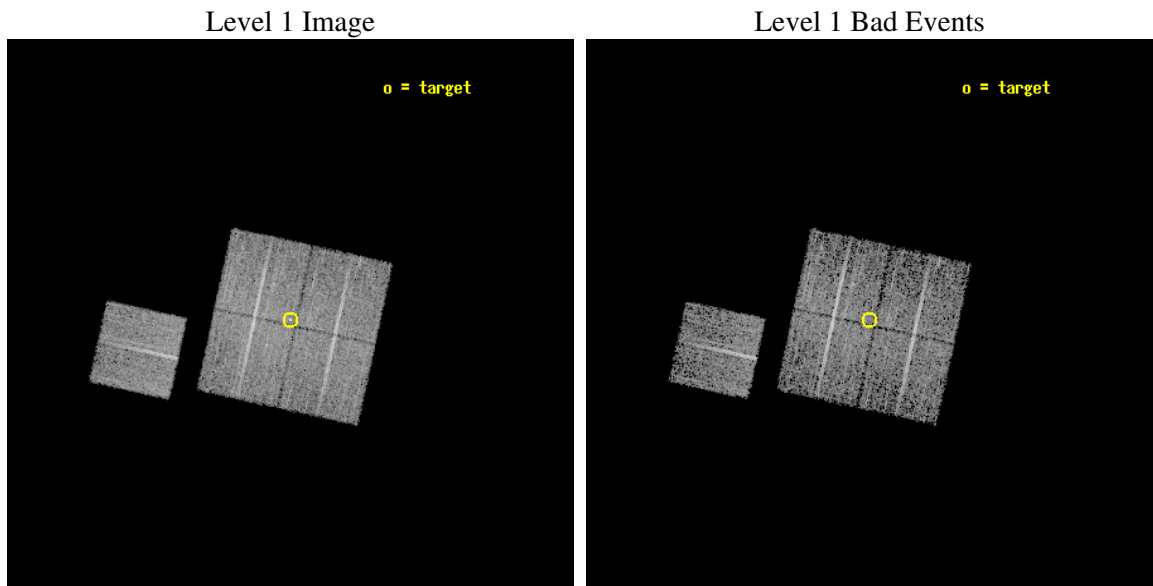
seq_num	200080
obs_id	973
title	OBSERVATION OF M-DWARF SYSTEM
observer	Prof. Gordon Garmire
object	G208-45
dtcycle	0
cycle	P
ra_targ	298.478333
dec_targ	44.415
ra_nom	298.47703227596
dec_nom	44.410265048513
roll_nom	282.37772084175
revision	2
ontime	5251.399989903
livetime	5182.7865830105
ontime0	5251.399989903
ontime1	5251.399989903
ontime2	5251.399989903
ontime3	5251.399989903
ontime6	5251.399989903
l2events	39126



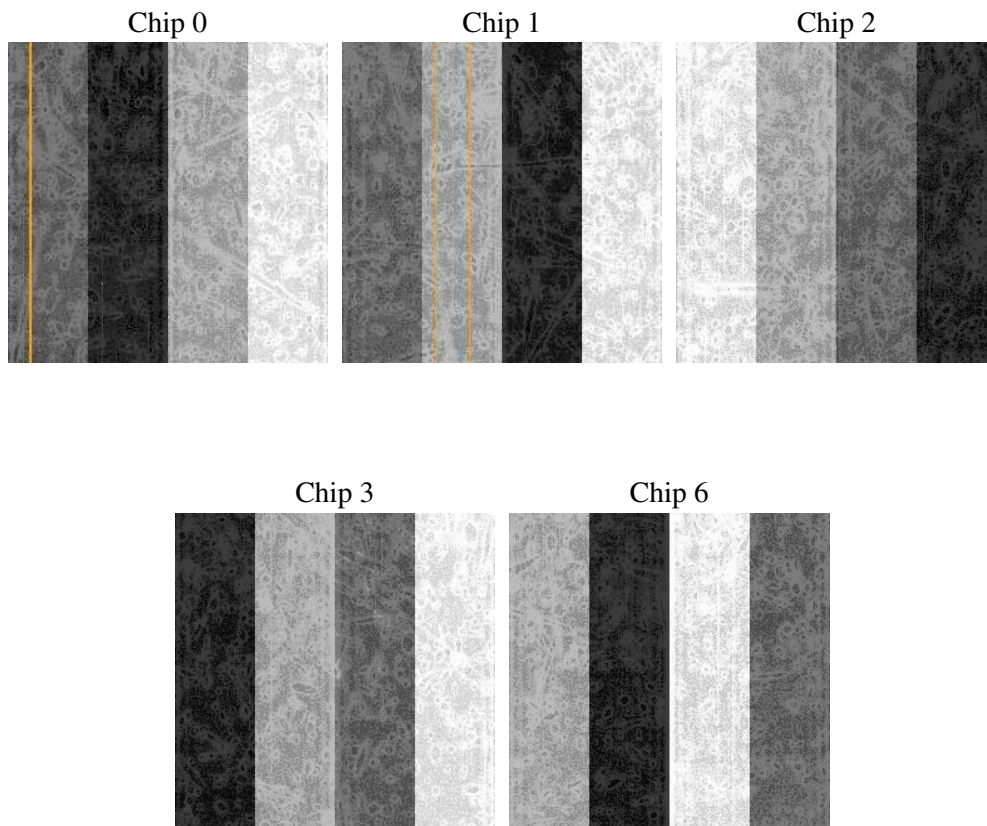
## 2 OBI

### 2.1 OBI

#### 2.1.1 Images



#### 2.1.2 Bias



### 2.1.3 Parameters

obi_num	0
ascdsver	7.6.10
caldbver	3.4.0
date	2007-06-14T05:04:12
revision	2

sched_exp_time	5075.000000
ontime	5251.399989903
ontime0	5251.399989903
ontime1	5251.399989903
ontime2	5251.399989903
ontime3	5251.399989903
ontime6	5251.399989903
llevents	213352

### 2.1.4 Events

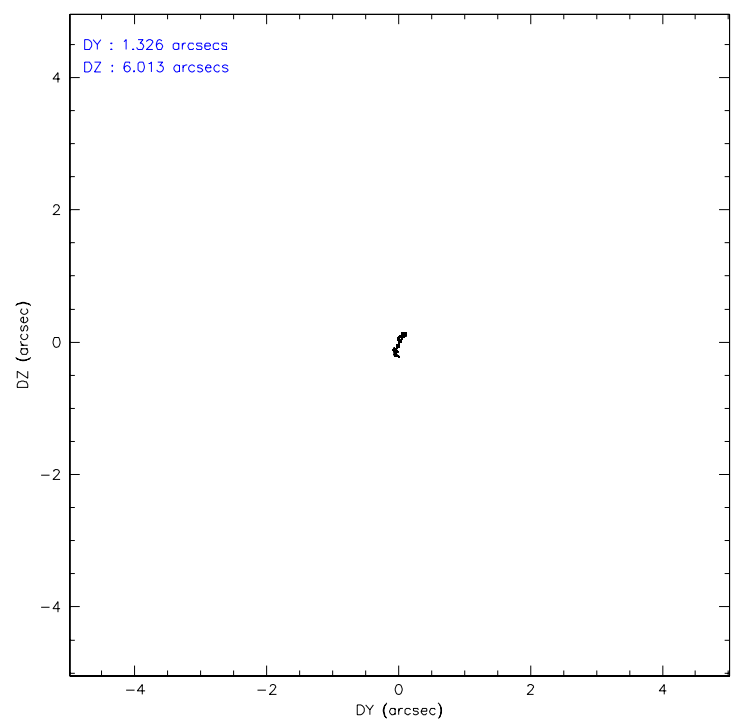
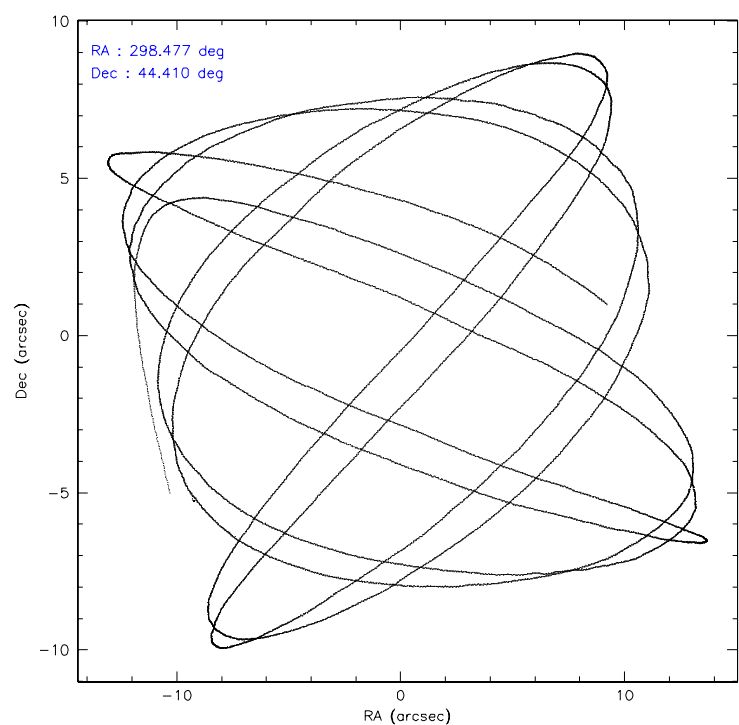
	ccd 0	ccd 1	ccd 2	ccd 3	ccd 6
level 1 events	40764	39915	44602	44943	43128
rejected events	31910	31026	35876	35785	34371
rejected %	78%	77%	80%	79%	79%

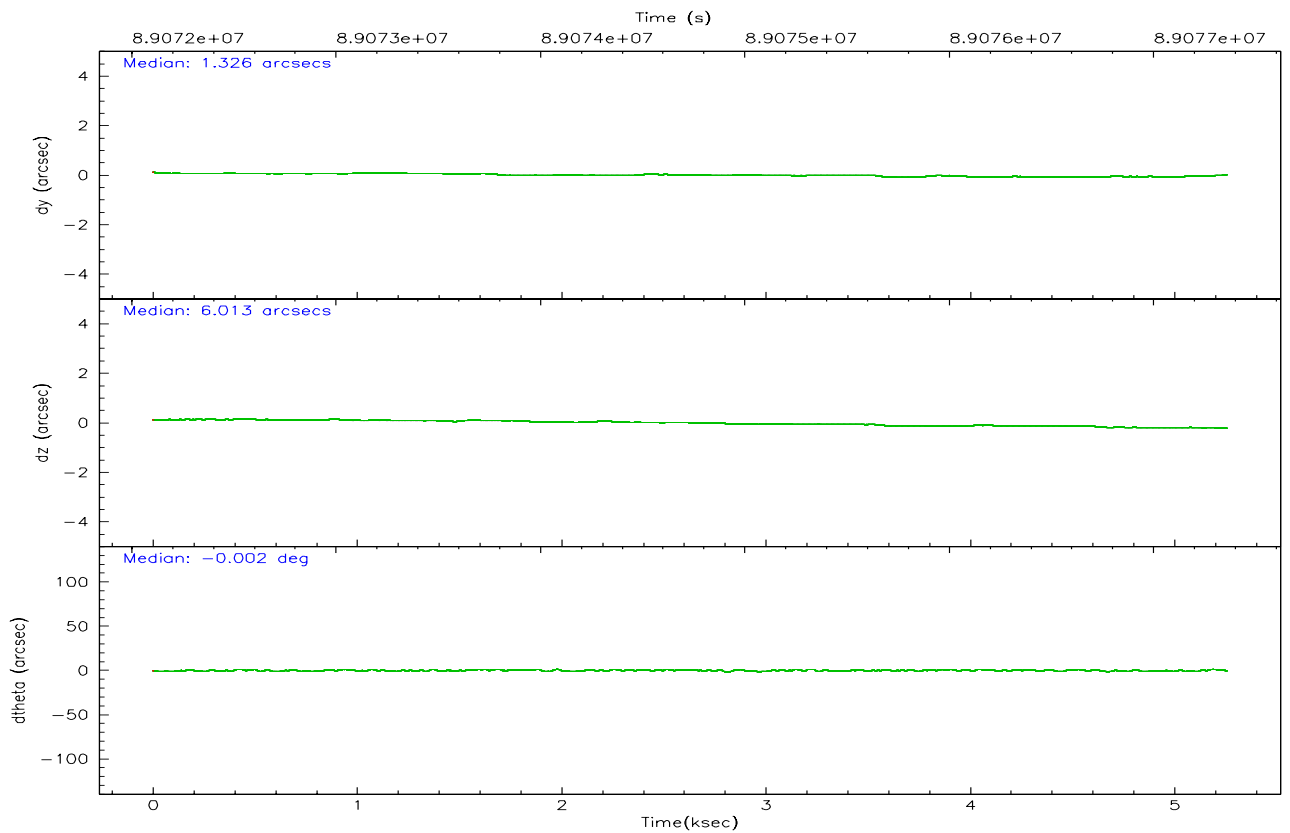
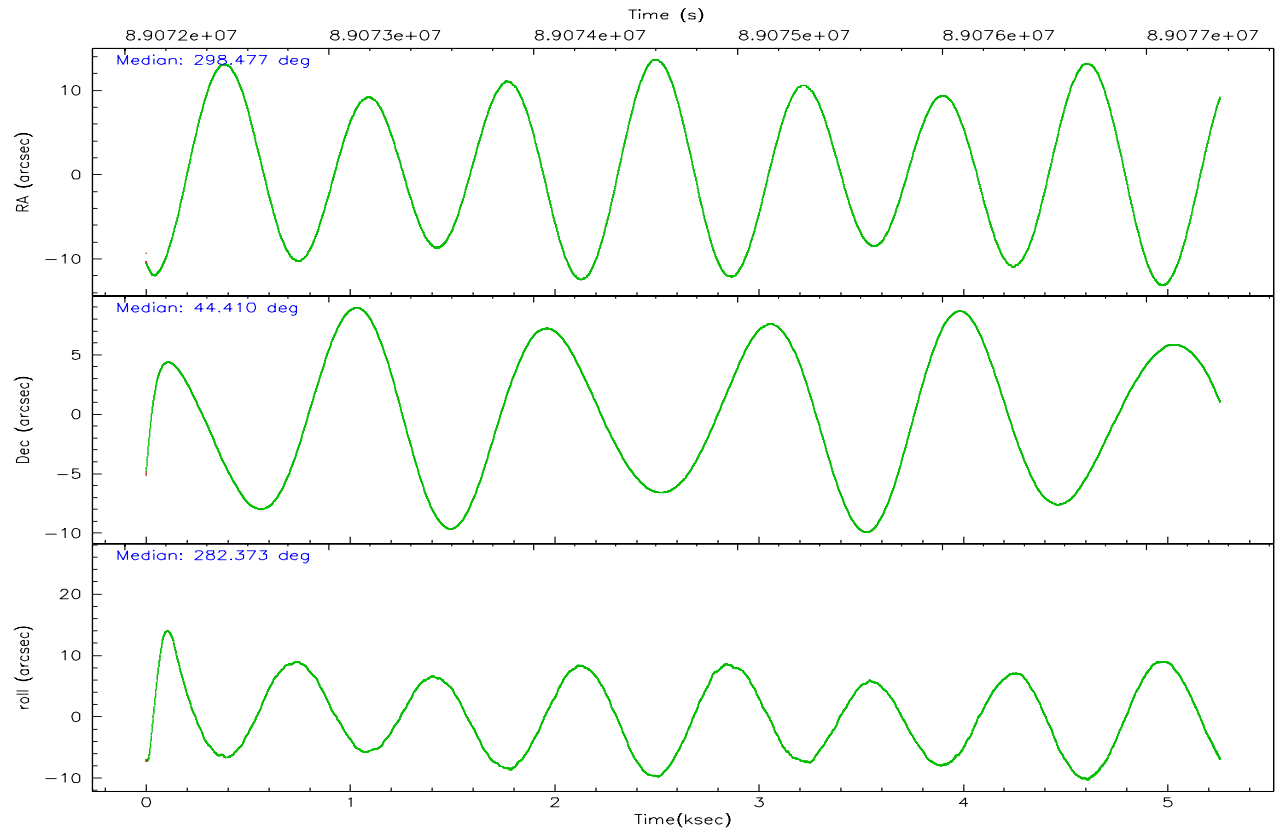
	ccd 0	ccd 1	ccd 2	ccd 3	ccd 6
grade 0 events	4063	3699	4219	4091	4055
	9%	9%	9%	9%	9%
grade 1 events	24	27	25	40	29
	0%	0%	0%	0%	0%
grade 2 events	2524	2810	2235	2714	2479
	6%	7%	5%	6%	5%
grade 3 events	476	529	432	500	479
	1%	1%	0%	1%	1%
grade 4 events	538	547	534	527	522
	1%	1%	1%	1%	1%
grade 5 events	1260	1353	1226	1331	1437
	3%	3%	2%	2%	3%
grade 6 events	1709	1749	1749	1790	1672
	4%	4%	3%	3%	3%
grade 7 events	30170	29201	34182	33950	32455
	74%	73%	76%	75%	75%

## 2.2 Compared Parameters

Parameter	Planned	Actual	Parameter	Planned	Actual
Instrument	ACIS	ACIS	Obspar format version number	6	6
Detector	ACIS-01236	ACIS-01236	Obspar file type	PREDICTED	ACTUAL
Grating	NONE	NONE	Obspar update status	NONE	UPDATED
Data mode	FAINT	FAINT	Number of optional ACIS chips dropped	0	0
Observation mode	POINTING	POINTING	On-chip summing requested	N	N
Pointing RA	298.451177	298.4770322759614	Subarray requested	NONE	NONE
Pointing Dec	44.430599	44.41026504851286	Alternating exposures requested	N	N
Pointing Roll	282.187187	282.3777208417478	Primary exposure time	0.000000	3.1
SIM focus pos (mm)	-0.782348	-0.7809083437167272			
SIM defocus (mm)	0	0.001439871863259334			
SIM translation stage pos (mm)	-233.592463	-233.5874344608287			
SIM translation stage offset (mm)	0	-0.005018542100998502			
Observation start time	89072287.184000	89071162.361919			
Observation start date	2000-10-27T22:17:03	2000-10-27T21:59:22			
Observation end time	89077362.184000	89077897.12467299			
Observation end date	2000-10-27T23:41:38	2000-10-27T23:51:37			
Read mode	TIMED	TIMED			

## 2.3 Aspect





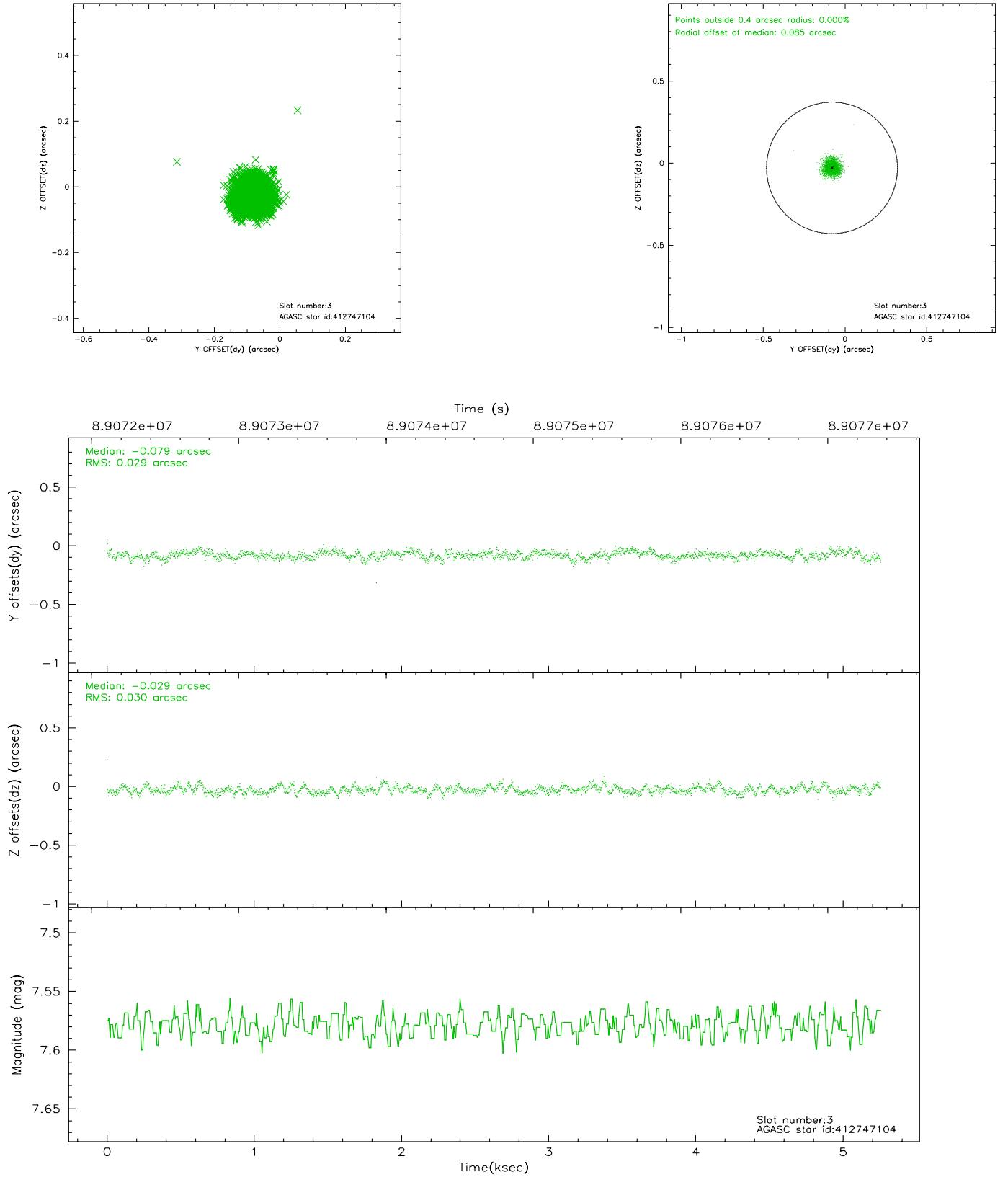
### Slot Statistics

slot	status	id	mag	n_pts	med_dy	med_dz	dr1	dr2	ra	dec	mean_y	mean_z
0	FID	ACIS-I-2	7.15	1283	-0.021	-0.034	0.009	0.015	0.000000	0.000000	-755.68	-835.77
1	FID	ACIS-I-4	7.18	1283	-0.099	0.031	0.005	0.009	0.000000	0.000000	2157.77	1069.91
2	FID	ACIS-I-5	7.23	1283	0.020	0.072	0.008	0.014	0.000000	0.000000	-1807.99	1069.09
3	GUIDE	412747104	7.58	2566	-0.079	-0.029	0.044	0.070	298.561342	44.847319	-1406.77	592.19
4	GUIDE	412752744	7.78	2566	0.052	-0.012	0.047	0.076	299.032333	44.826300	-1084.42	1753.16
5	GUIDE	412752224	7.22	2565	0.019	-0.001	0.044	0.069	298.394975	44.135752	1007.04	-364.47
6	GUIDE	412752872	8.54	2565	-0.066	0.044	0.058	0.094	298.112006	44.688270	-1090.74	-651.75
7	GUIDE	412760496	8.80	2499	0.077	-0.000	0.089	0.139	298.220099	43.779237	2164.90	-1081.44

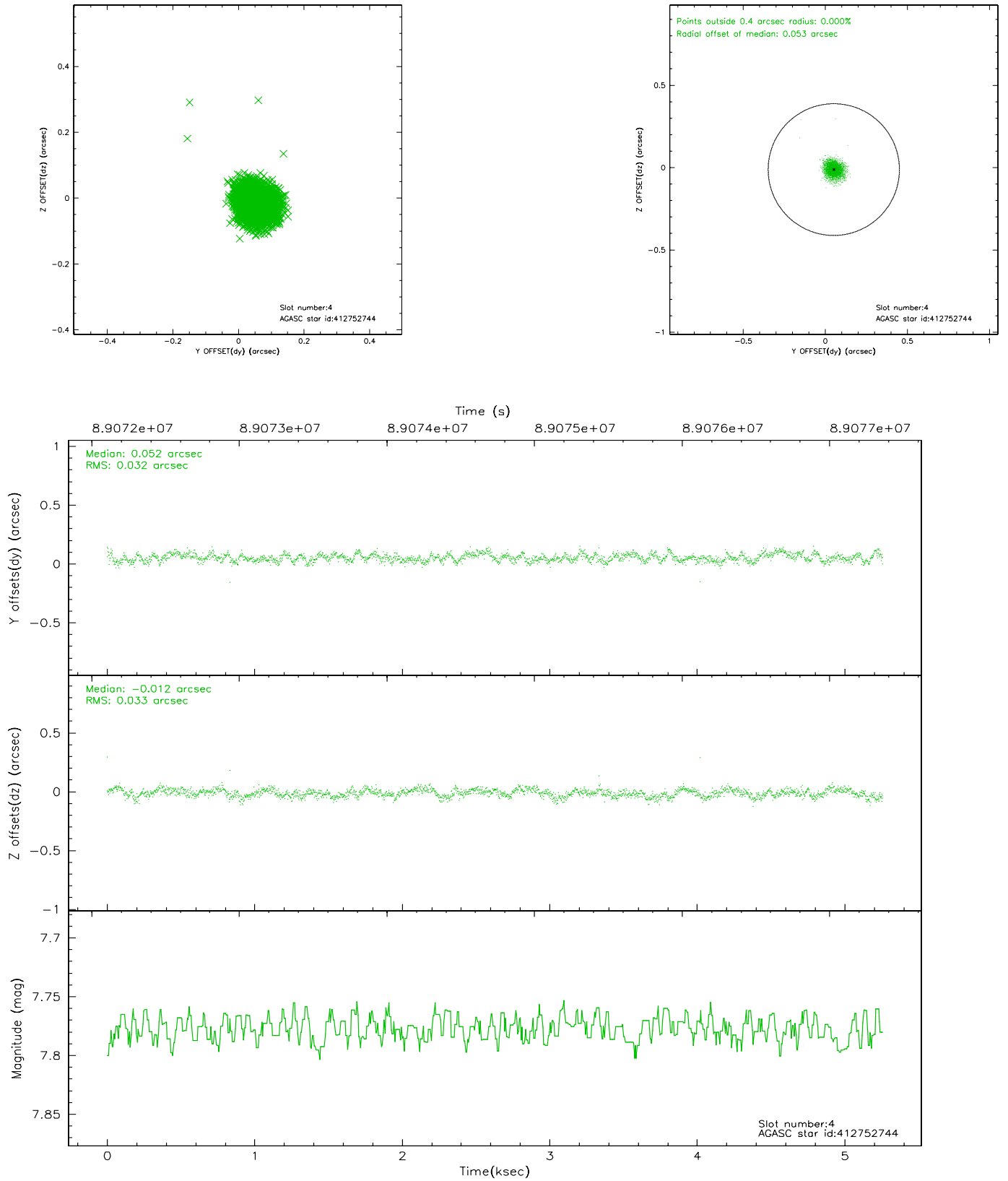


## 2.4 Star Slots

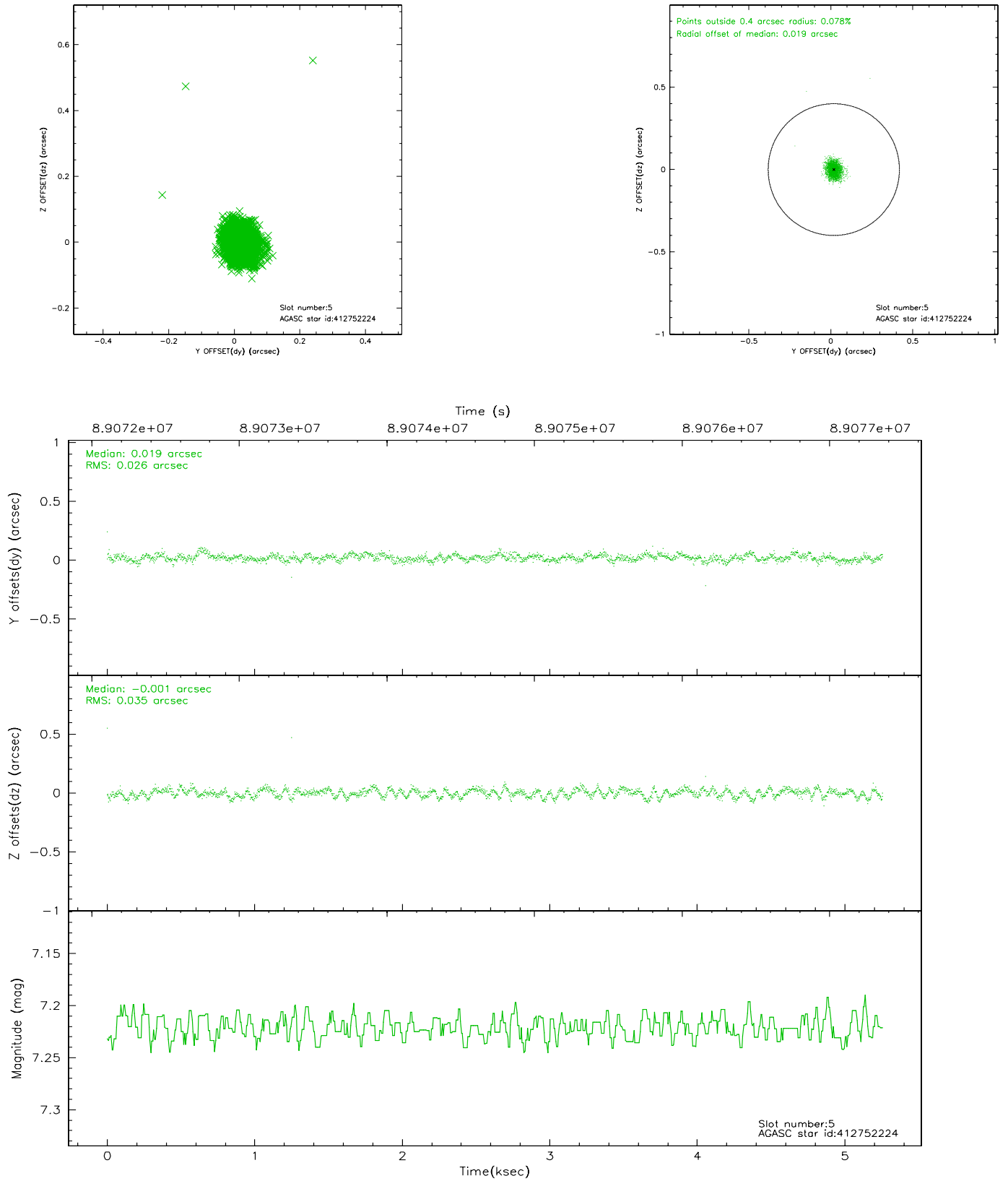
### 2.4.1 Slot 3



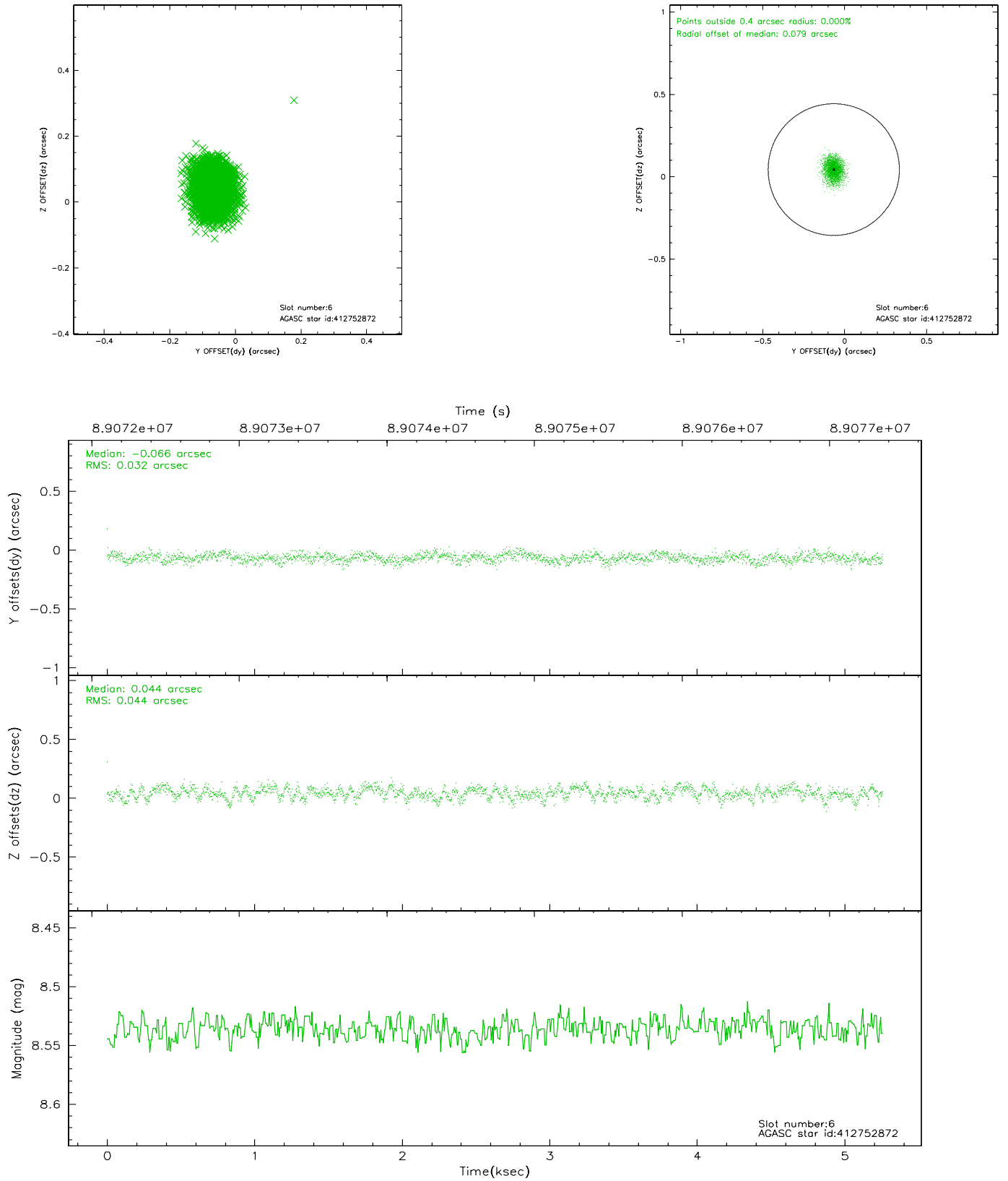
## 2.4.2 Slot 4



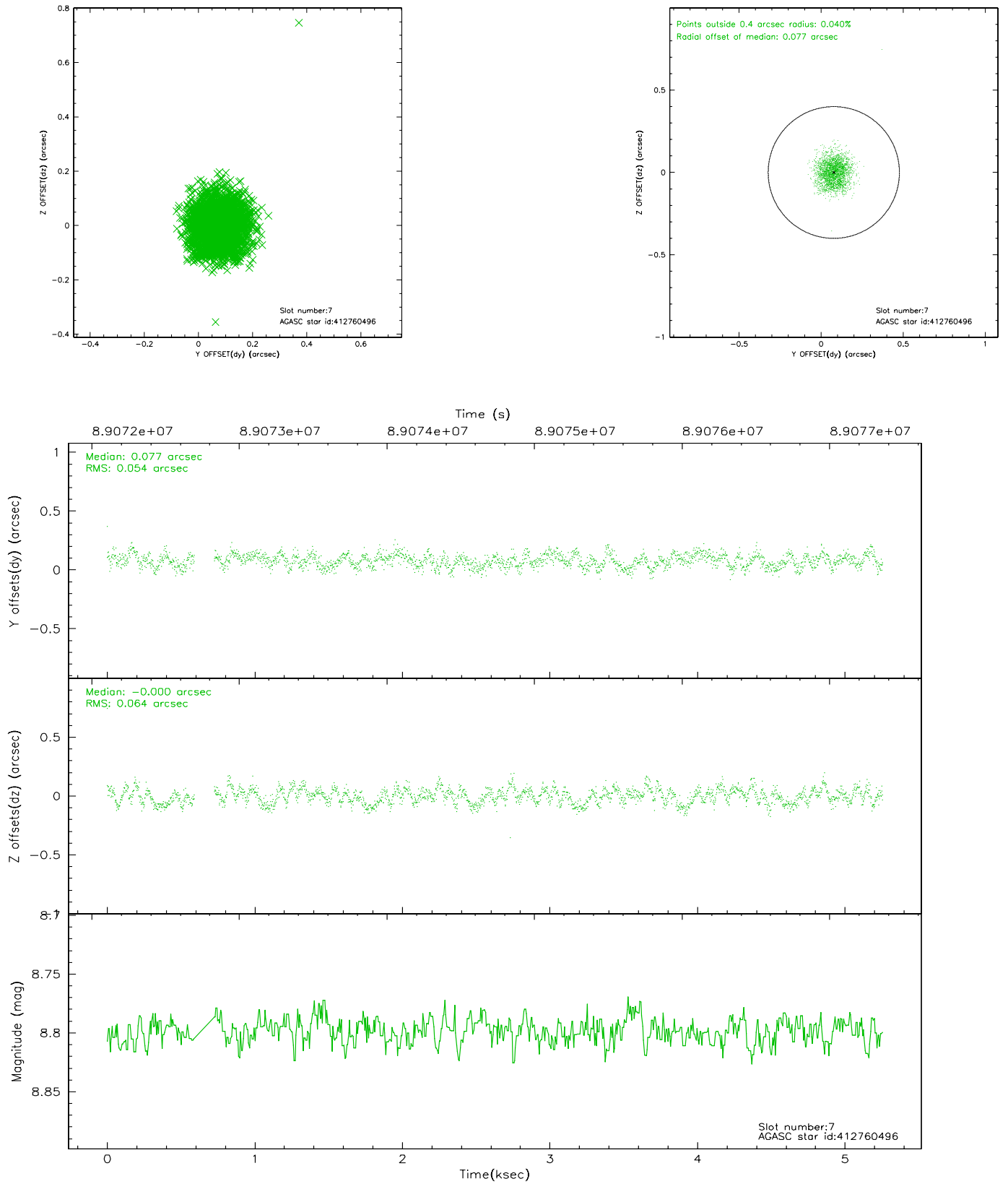
### 2.4.3 Slot 5



## 2.4.4 Slot 6

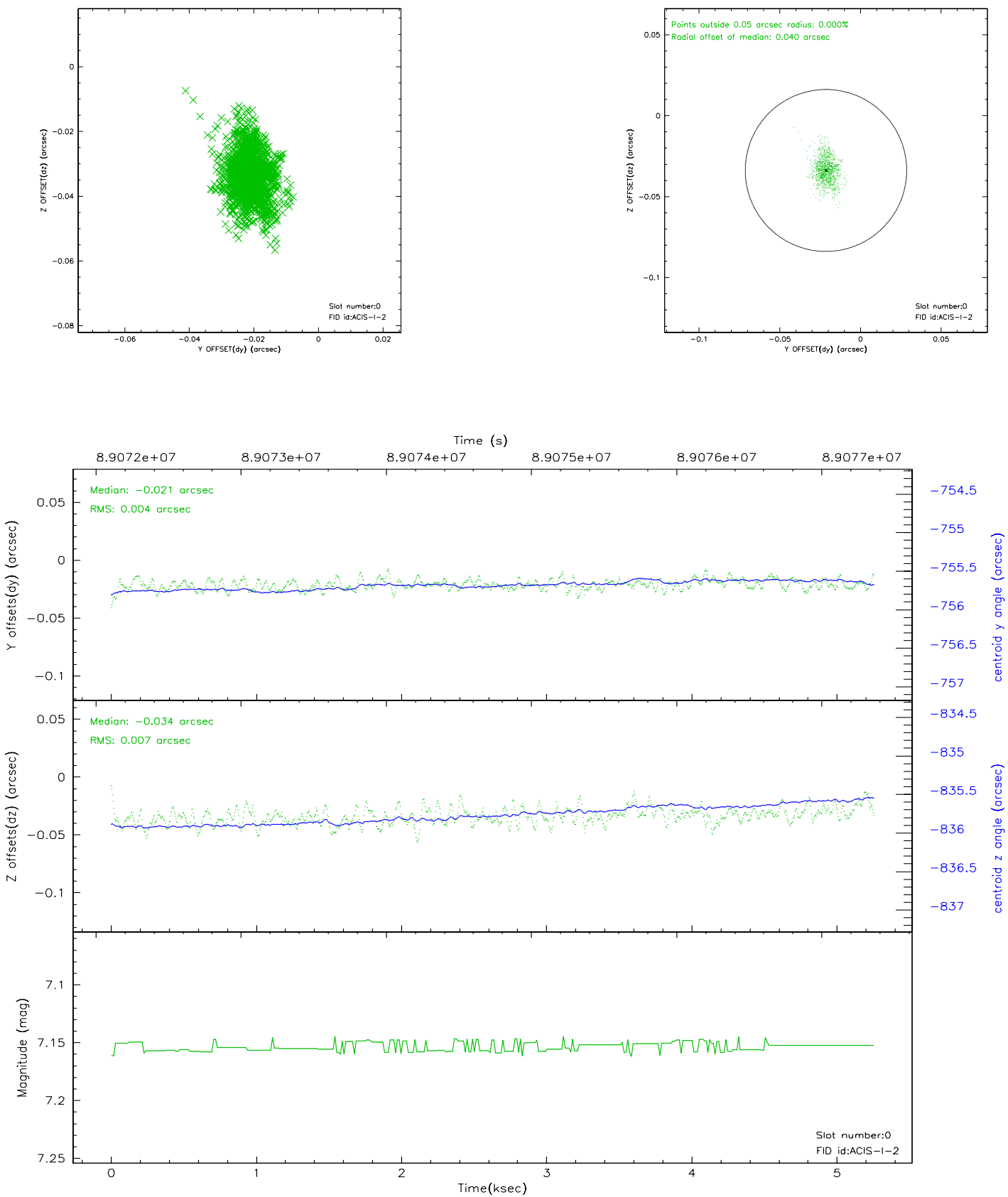


## 2.4.5 Slot 7

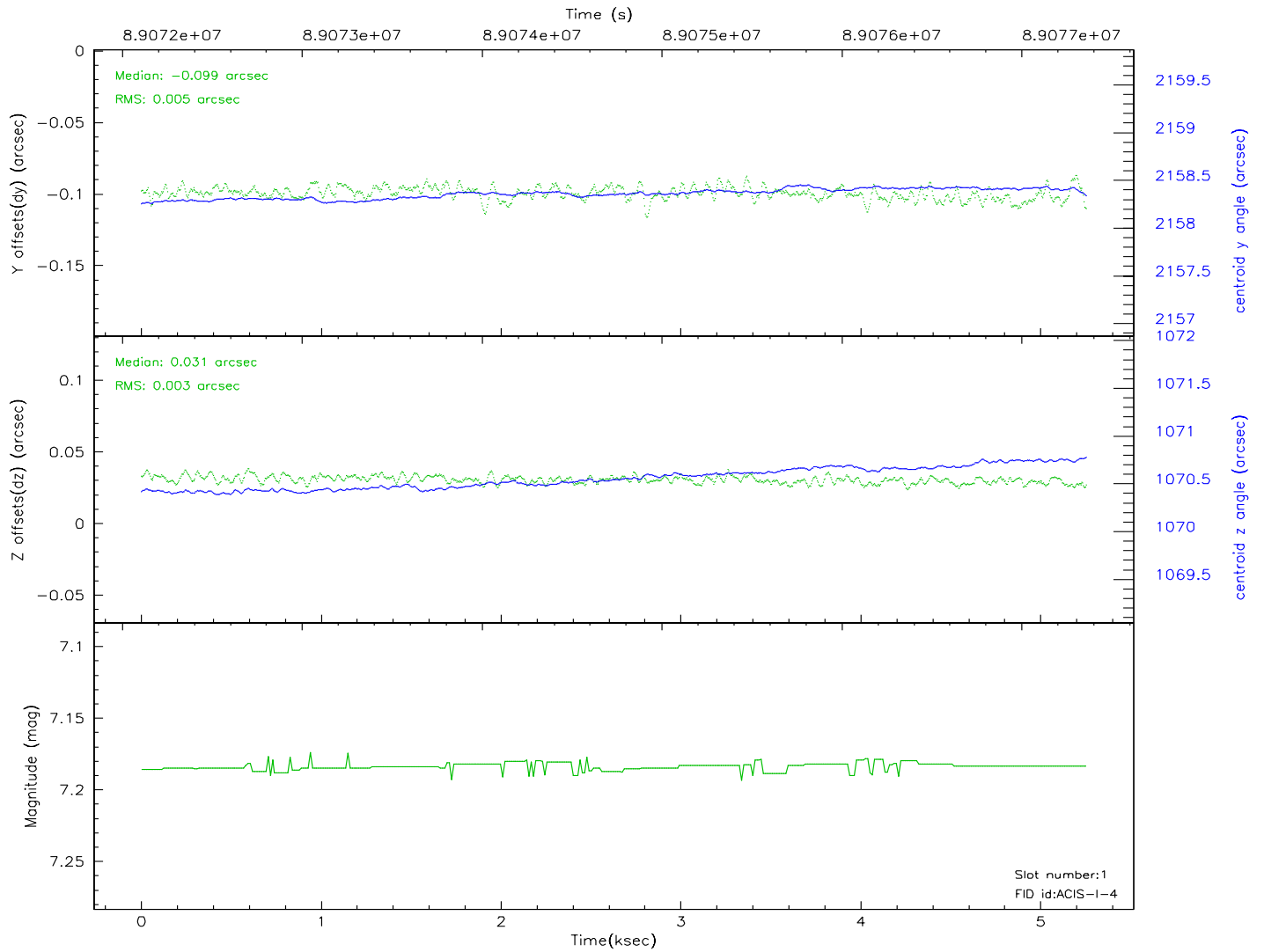
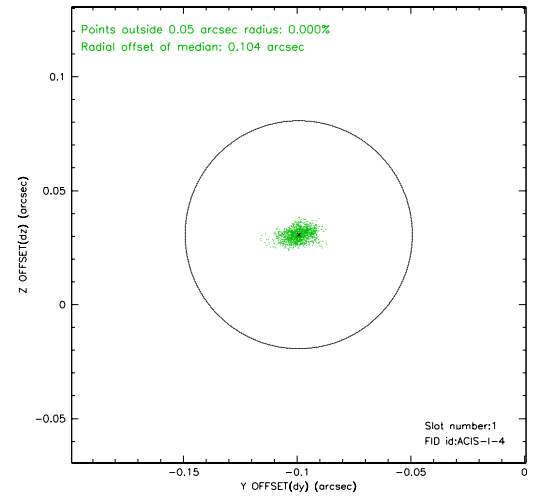
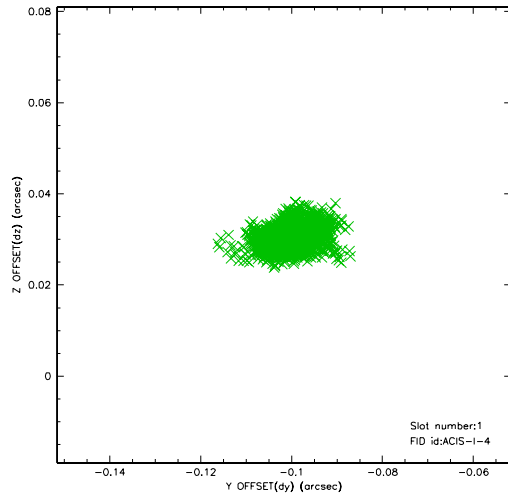


## 2.5 FID Slots

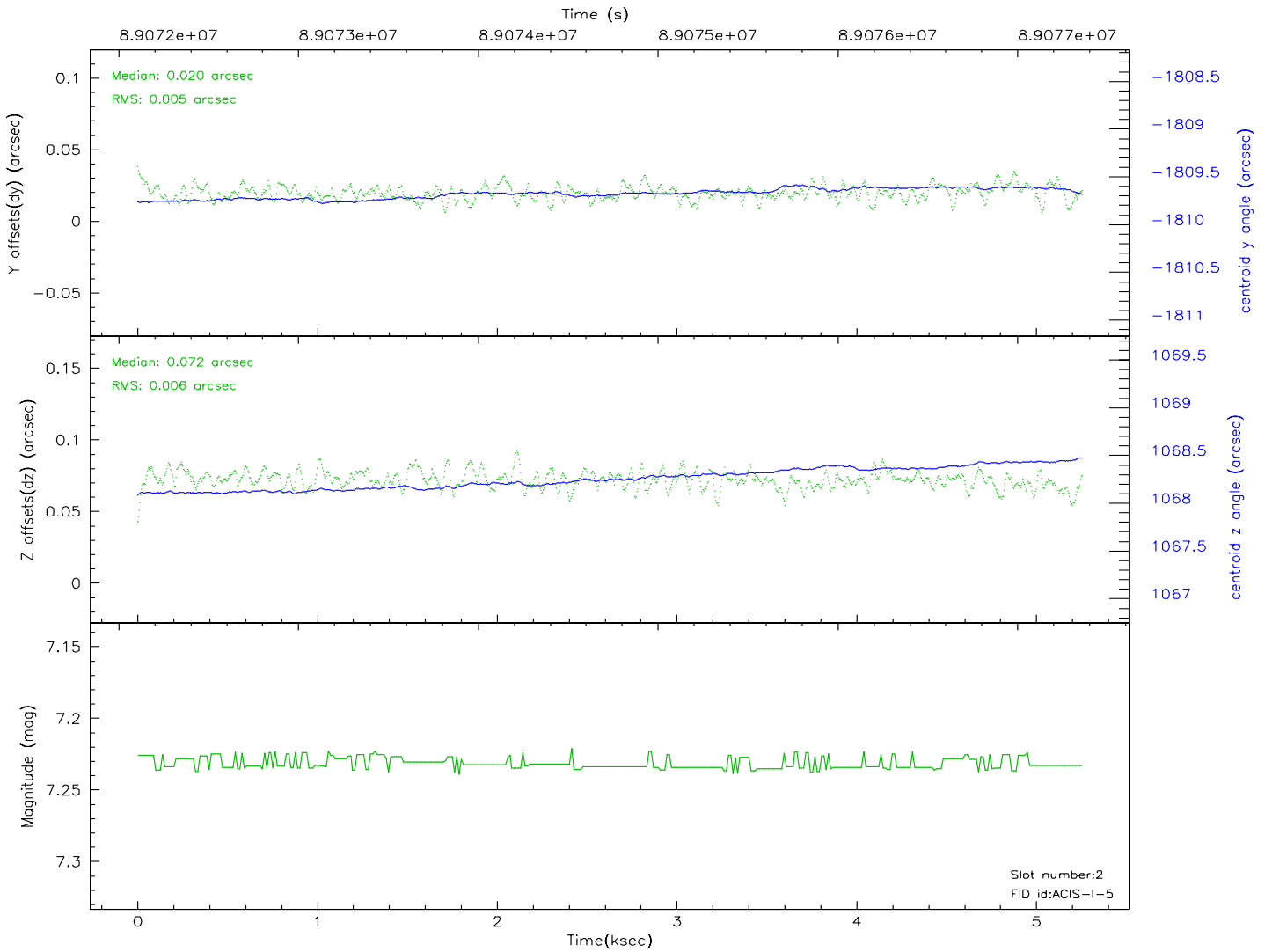
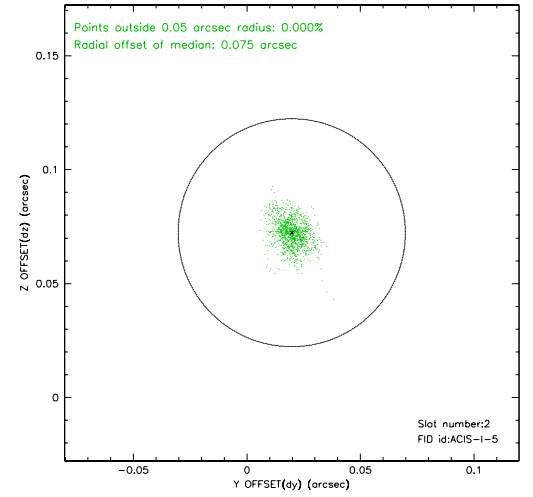
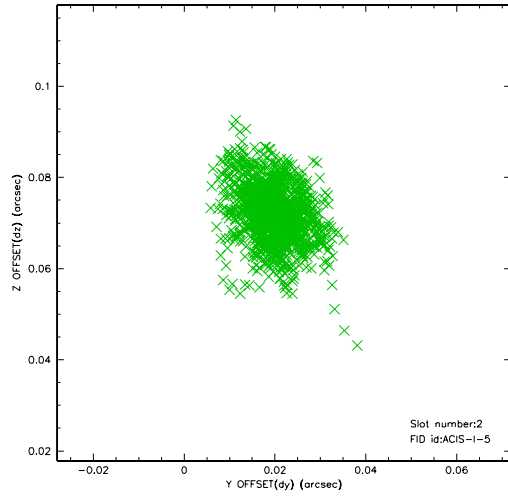
### 2.5.1 Slot 0



## 2.5.2 Slot 1

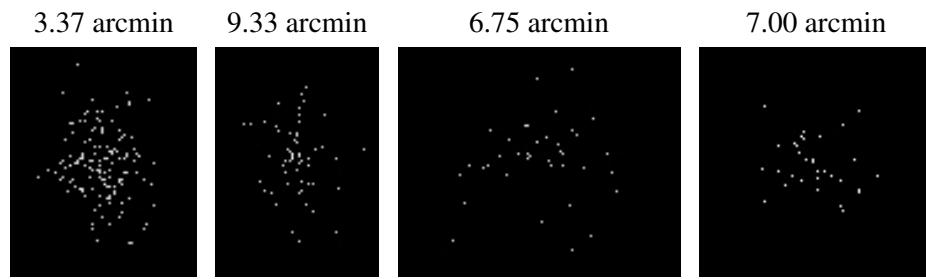


### 2.5.3 Slot 2





### 3 Point Sources



## A Summary

### A.1 Status

V&V Scientist	Jen Lauer
V&V Date (YYYY-MM-DD)	2007.06.14
V&V Edition	1
V&V Disposition and Status	OK
V&V Charge Time	5.251

### A.2 Comments