

V&V Reference Report

L2 ASCDS Version : 8.4.5

Observation 2420 - L2 Version 4
Chandra X-Ray Center

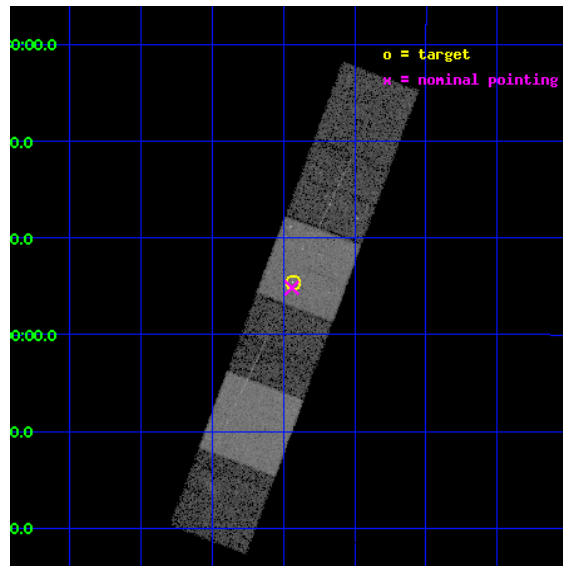
L2 Processing Date : Sep 16 2012

Contents

1	Front	2
2	OBI	3
2.1	OBI	3
2.1.1	Images	3
2.1.2	Bias	3
2.1.3	Parameters	4
2.1.4	Events	4
2.2	Compared Parameters	5
2.3	Aspect	6
2.4	Star Slots	9
2.4.1	Slot 3	9
2.4.2	Slot 4	10
2.4.3	Slot 5	11
2.4.4	Slot 6	12
2.4.5	Slot 7	13
2.5	FID Slots	14
2.5.1	Slot 0	14
2.5.2	Slot 1	15
2.5.3	Slot 2	16
3	Gratings	17
3.1	HEG Arm	17
3.2	MEG Arm	19
A	Summary	21
A.1	Status	21
A.2	Comments	21

1 Front

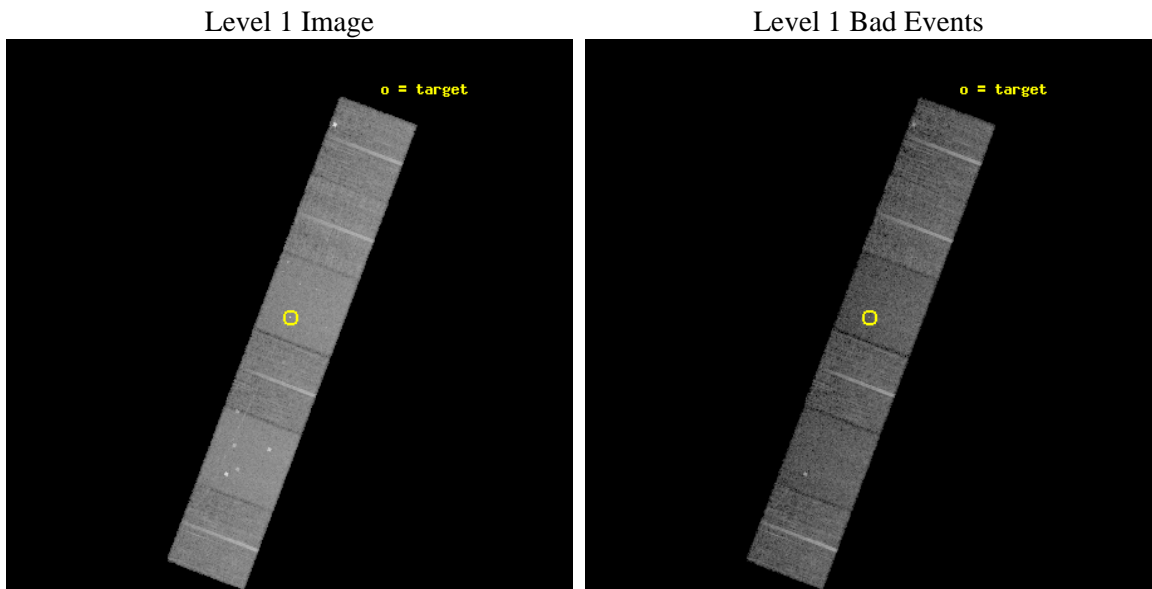
seq_num	200075	Sequence number
obs_id	2420	Observation id
title	COLLIDING STELLAR WINDS IN IOTA ORIONIS.	Proposal title
observer	Prof Claude Canizares	Principal investigator
object	IOTA ORIONIS	Source name
dtcycle	0	
cycle	P	events from which exps? Prim/Second/Both
ra_targ	83.858333	Observer's specified target RA [deg]
dec_targ	-5.909722	Observer's specified target Dec [deg]
ra_nom	83.860079613099	Nominal RA [deg]
dec_nom	-5.9193732145486	Nominal Dec [deg]
roll_nom	290.65669563784	Nominal Roll [deg]
revision	4	Processing version of data
ontime	12914.603667066	Sum of GTIs [s]
livetime	12751.071179192	Livetime [s]
ontime4	12914.644707069	Sum of GTIs [s]
ontime5	12914.562627062	Sum of GTIs [s]
ontime6	12914.521587074	Sum of GTIs [s]
ontime7	12914.603667066	Sum of GTIs [s]
ontime8	12914.480547071	Sum of GTIs [s]
ontime9	12914.439507067	Sum of GTIs [s]
l2events	133032	Number of level 2 events



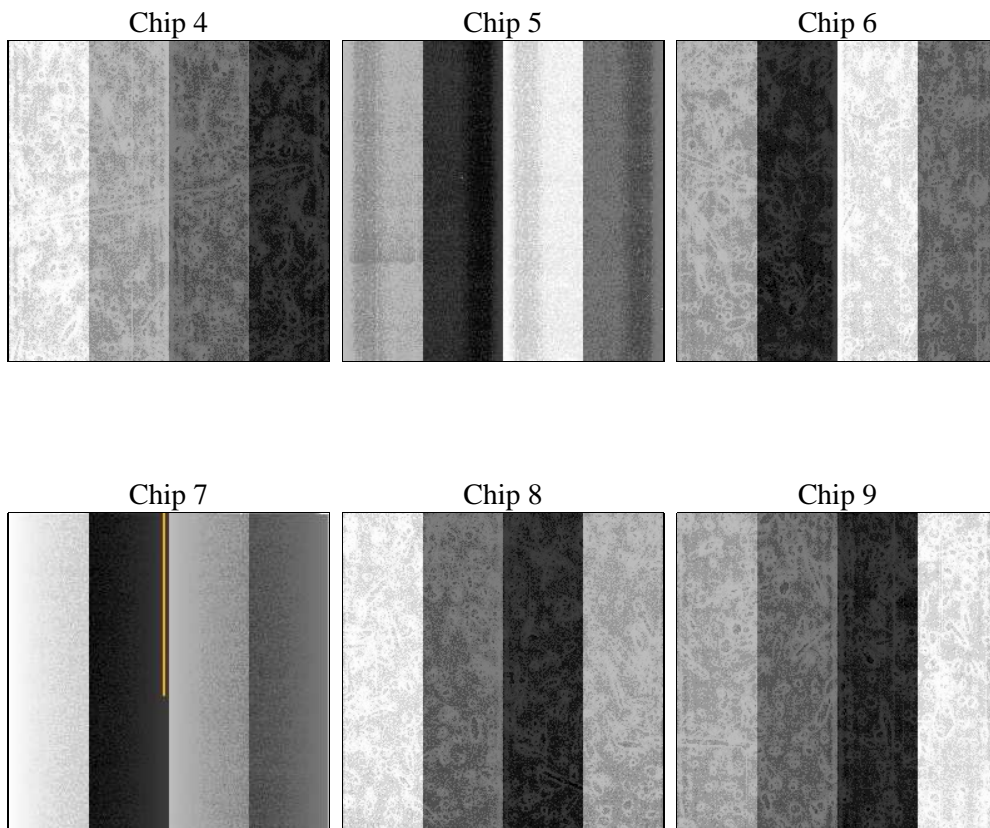
2 OBI

2.1 OBI

2.1.1 Images



2.1.2 Bias



2.1.3 Parameters

obi_num	0	Obi number	sched_exp_time	12790.000000	[s] Scheduled observation exposure time
ascdsver	8.4.5	Processing system revision	ontime	12914.603667066	Sum of GTIs [s]
caldsver	4.5.1.1	 	ontime4	12914.644707069	Sum of GTIs [s]
date	2012-09-16T03:02:40	Date and time of file creation	ontime5	12914.562627062	Sum of GTIs [s]
revision	4	Processing version of data	ontime6	12914.521587074	Sum of GTIs [s]
			ontime7	12914.603667066	Sum of GTIs [s]
			ontime8	12914.480547071	Sum of GTIs [s]
			ontime9	12914.439507067	Sum of GTIs [s]
			l1events	584164	Number of level 1 events

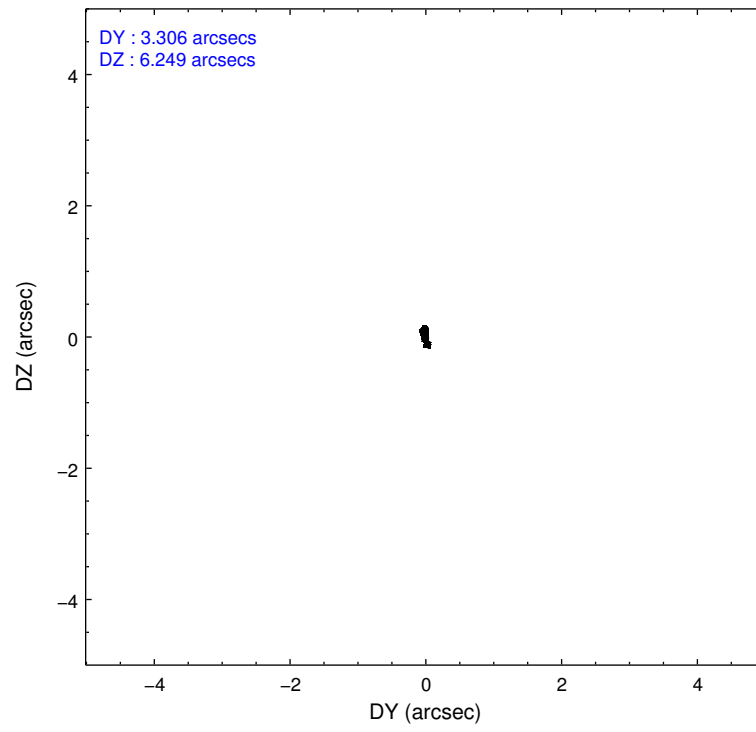
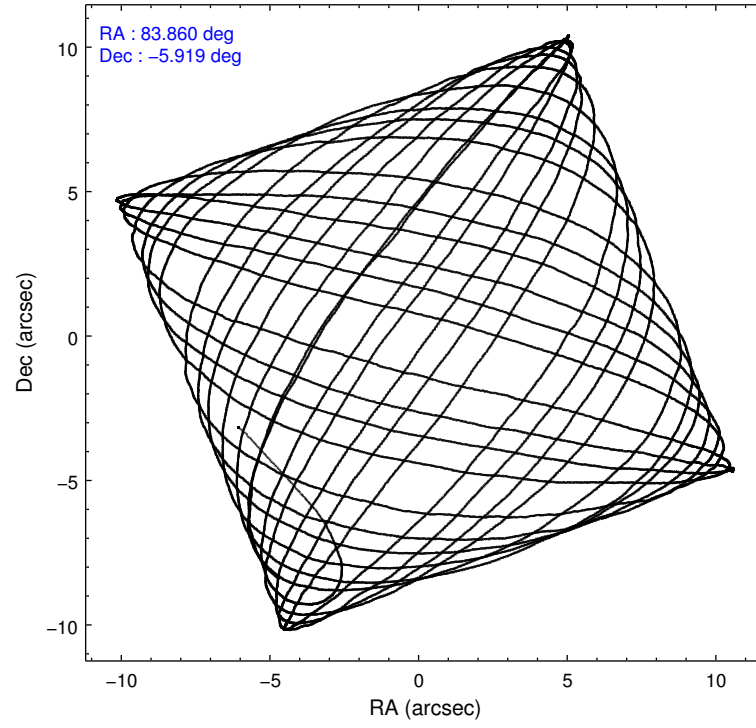
2.1.4 Events

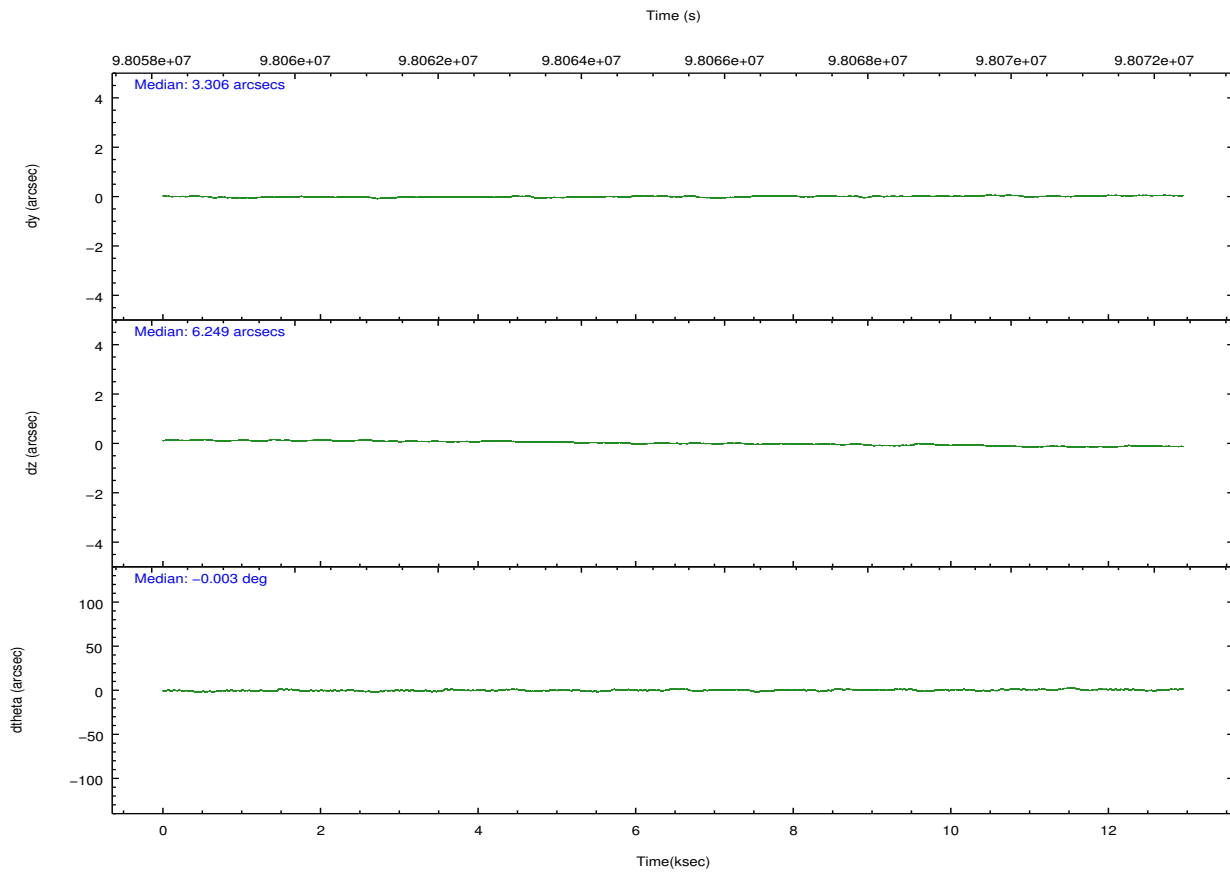
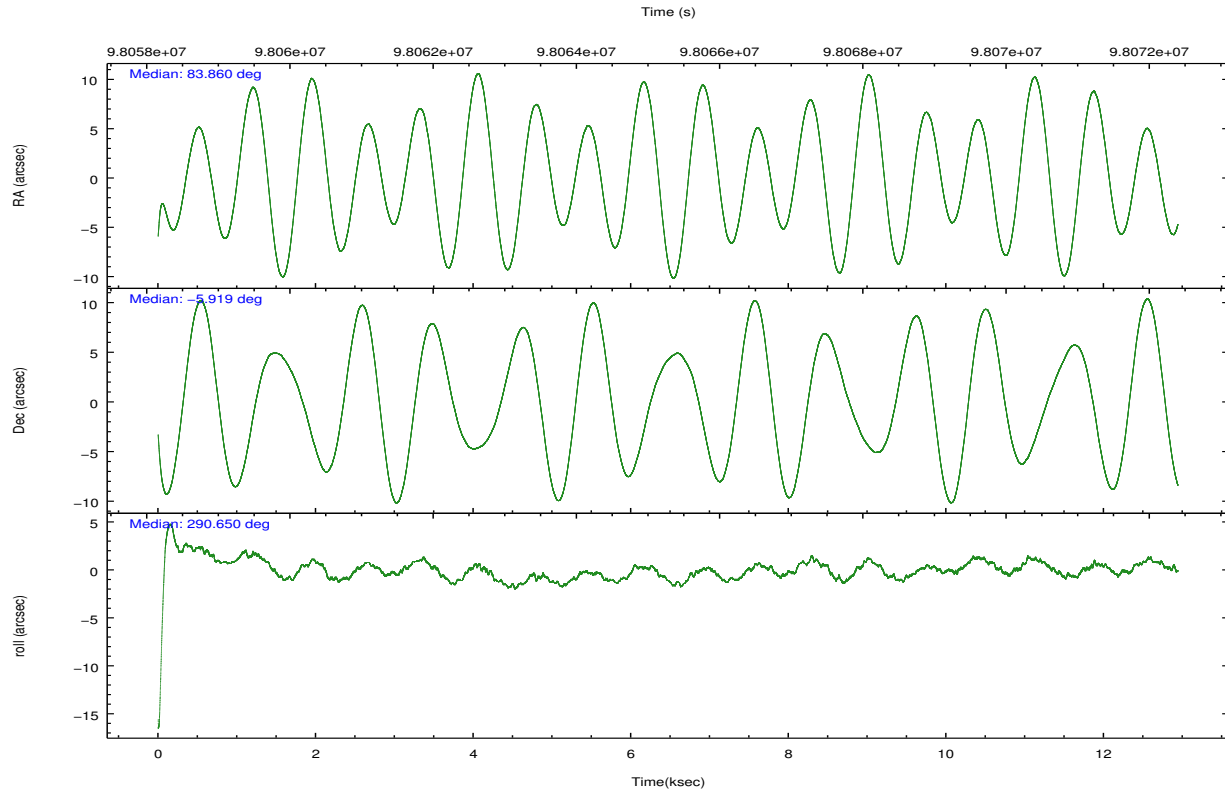
	ccd 4	ccd 5	ccd 6	ccd 7	ccd 8	ccd 9		ccd 4	ccd 5	ccd 6	ccd 7	ccd 8	ccd 9
level 1 events	89283	117084	83258	105009	103336	86194	grade 0 events	4836	8563	4793	4857	7973	8657
rejected events	78120	61504	72382	59851	81610	71327		5%	7%	5%	4%	7%	10%
rejected %	87%	52%	86%	56%	78%	82%	grade 1 events	39	656	45	139	69	388
								0%	0%	0%	0%	0%	0%
							grade 2 events	2617	15390	2045	9125	4384	2024
								2%	13%	2%	8%	4%	2%
							grade 3 events	970	2287	988	4123	2205	1013
								1%	1%	1%	3%	2%	1%
							grade 4 events	877	2299	994	4173	2067	1071
								0%	1%	1%	3%	2%	1%
							grade 5 events	2913	8588	3291	9828	4329	3445
								3%	7%	3%	9%	4%	3%
							grade 6 events	1865	27060	2058	22891	5100	2106
								2%	23%	2%	21%	4%	2%
							grade 7 events	75166	52241	69044	49873	77209	67490
								84%	44%	82%	47%	74%	78%

2.2 Compared Parameters

Parameter	Planned	Actual	Parameter	Planned	Actual
Instrument	ACIS	ACIS	Obspar format version number	7	7
Detector	ACIS-456789	ACIS-456789	Obspar file type	PREDICTED	ACTUAL
Grating	HETG	HETG	Obspar update status	NONE	UPDATED
Data mode	FAINT	FAINT	Number of optional ACIS chips dropped	0	0
Observation mode	POINTING	POINTING	On-chip summing requested	N	N
[deg] Pointing RA	83.838716	83.86007961309946	Subarray requested	NONE	NONE
[deg] Pointing Dec	-5.902250	-5.919373214548614	Alternating exposures requested	N	N
[deg] Pointing Roll	290.497883	290.6566956378398	[s] Primary exposure time	0.000000	3.2
[mm] SIM focus pos	-0.684267	-0.6828225247311905			
[mm] SIM defocus	0	0.001444936568705701			
[mm] SIM translation stage pos	-187.132523	-187.1228876879999			
[mm] SIM translation stage offset	-3	-3.009634895007935			
[s] Observation start time (MET)	98058964.184000	98057900.943047			
Observation start date	2001-02-08T22:35:00	2001-02-08T22:18:20			
[s] Observation end time (MET)	98071754.184000	98072702.96861701			
Observation end date	2001-02-09T02:08:10	2001-02-09T02:25:02			
Read mode	TIMED	TIMED			

2.3 Aspect



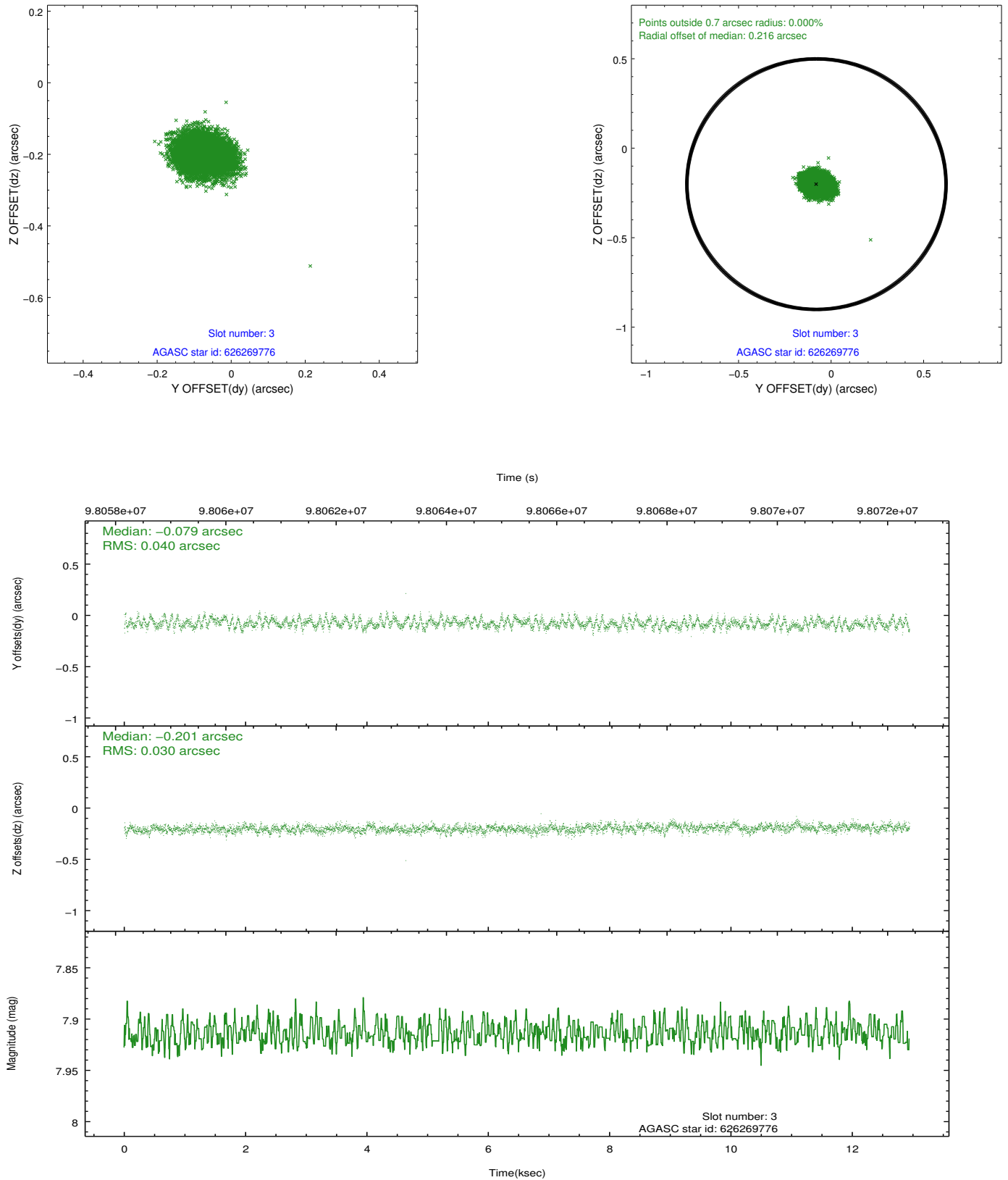


Slot Statistics

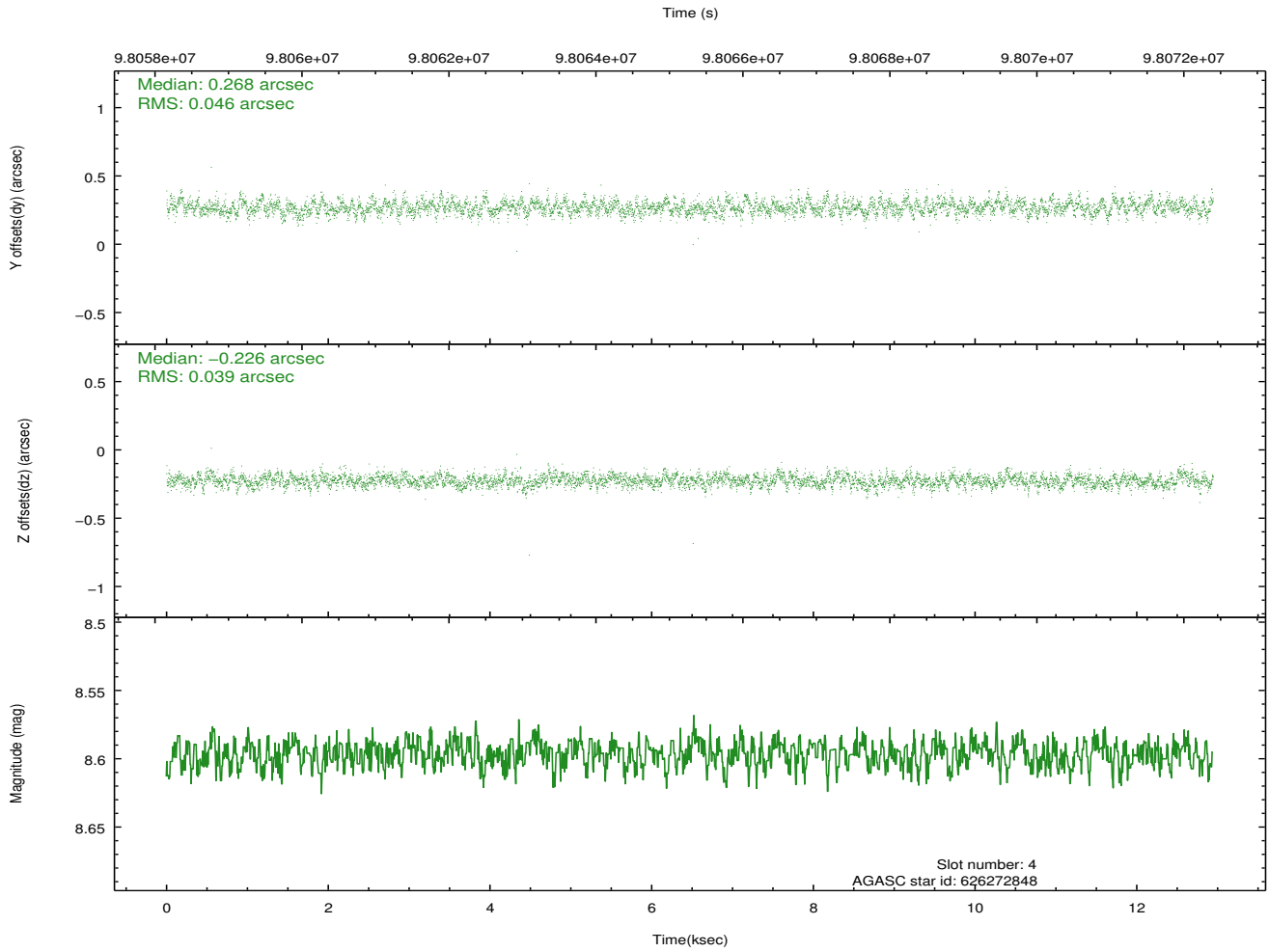
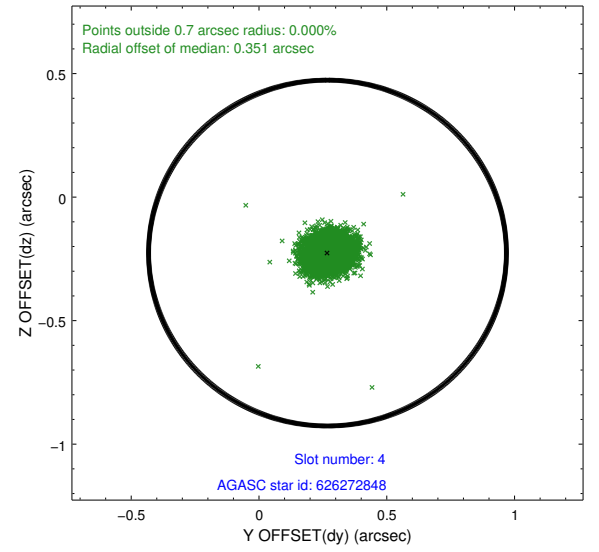
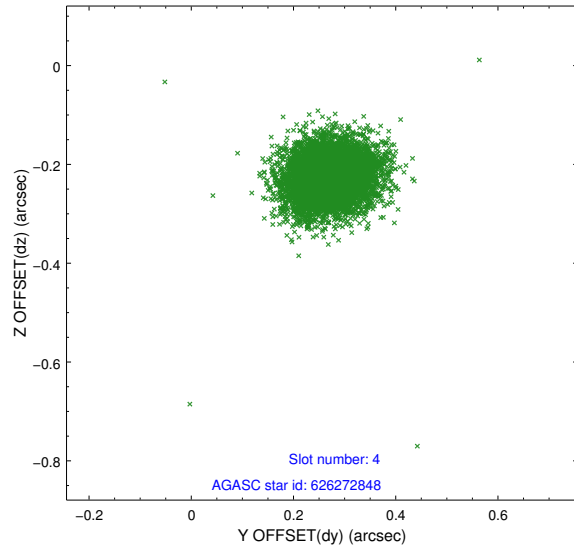
slot	status	id	mag	n_pts	med_dy	med_dz	dr1	dr2	ra	dec	mean_y	mean_z
0	FID	ACIS-S-2	7.10	3157	-0.016	-0.052	0.011	0.021	0.000000	0.000000	-755.78	-1789.58
1	FID	ACIS-S-4	7.19	3157	-0.007	0.022	0.008	0.014	0.000000	0.000000	2157.36	118.54
2	FID	ACIS-S-5	7.23	3158	-0.007	0.039	0.013	0.021	0.000000	0.000000	-1808.11	112.69
3	GUIDE	626269776	7.91	6314	-0.079	-0.201	0.052	0.086	83.358607	-6.532867	1525.99	-2403.76
4	GUIDE	626272848	8.60	6314	0.268	-0.226	0.062	0.103	84.129003	-6.453841	2224.21	276.92
5	GUIDE	626272880	7.66	6315	0.177	-0.039	0.068	0.108	83.815609	-6.032748	411.47	-241.92
6	GUIDE	625744200	8.29	6314	-0.065	0.143	0.057	0.091	83.695760	-5.570729	-1297.37	-61.91
7	GUIDE	626398088	8.99	6306	-0.304	0.326	0.072	0.119	84.581490	-6.133042	1710.06	2199.37

2.4 Star Slots

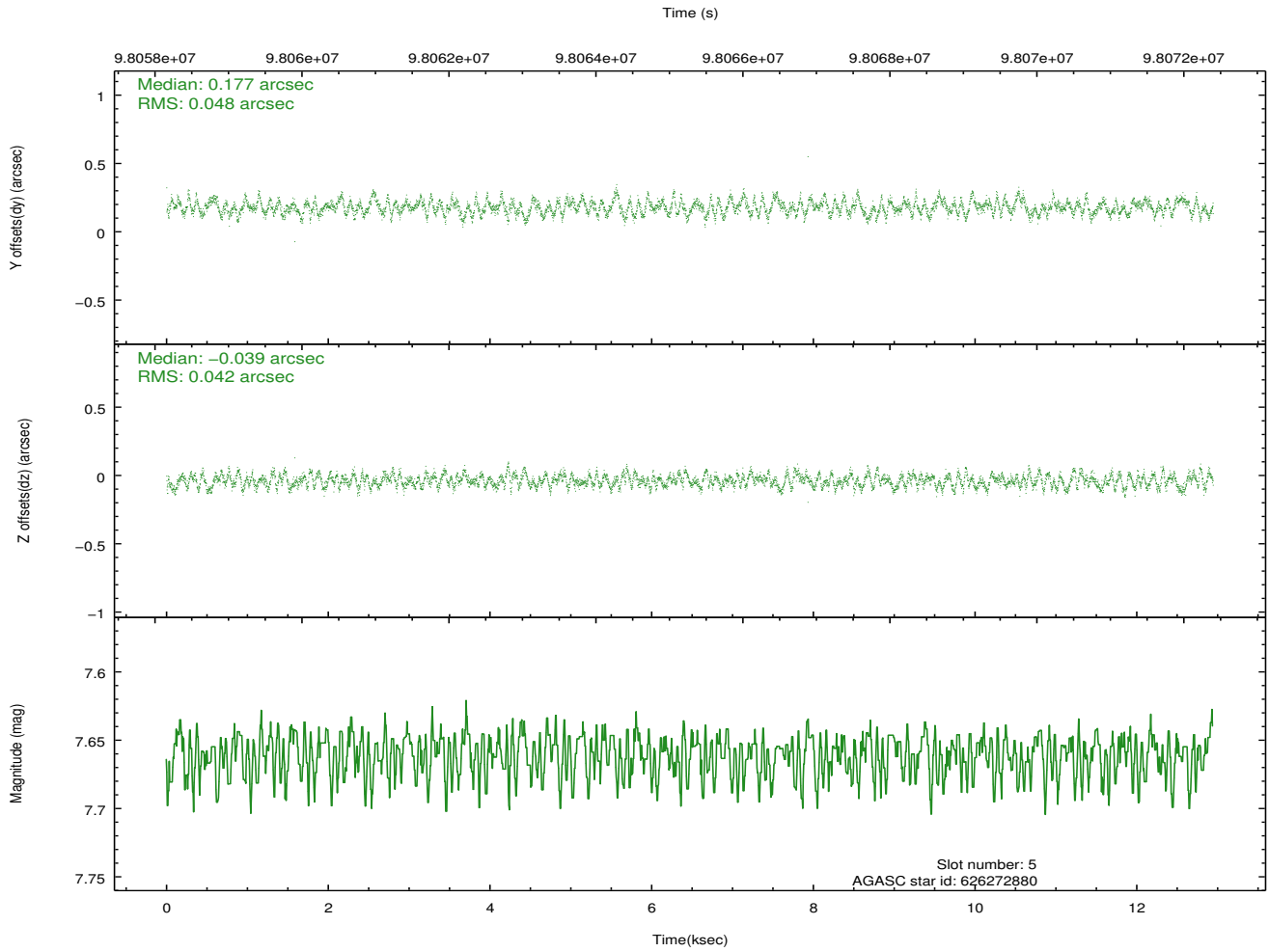
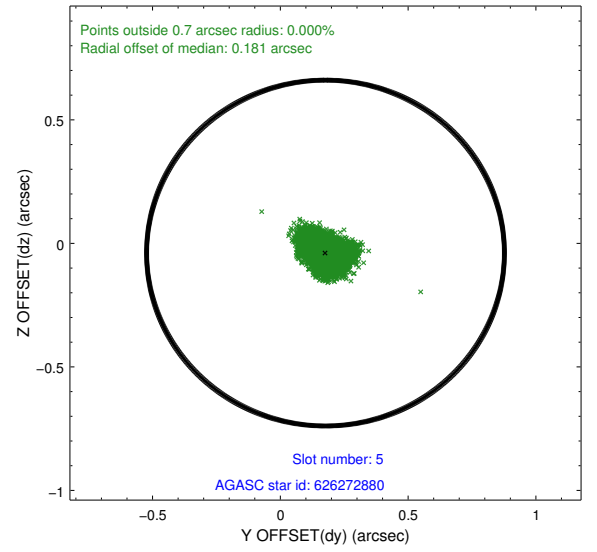
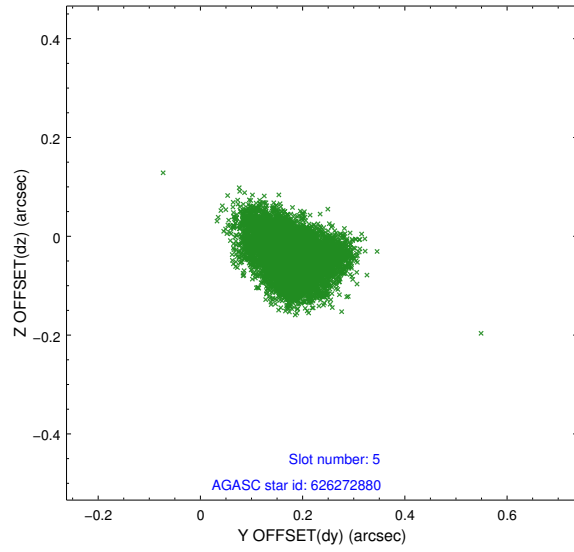
2.4.1 Slot 3



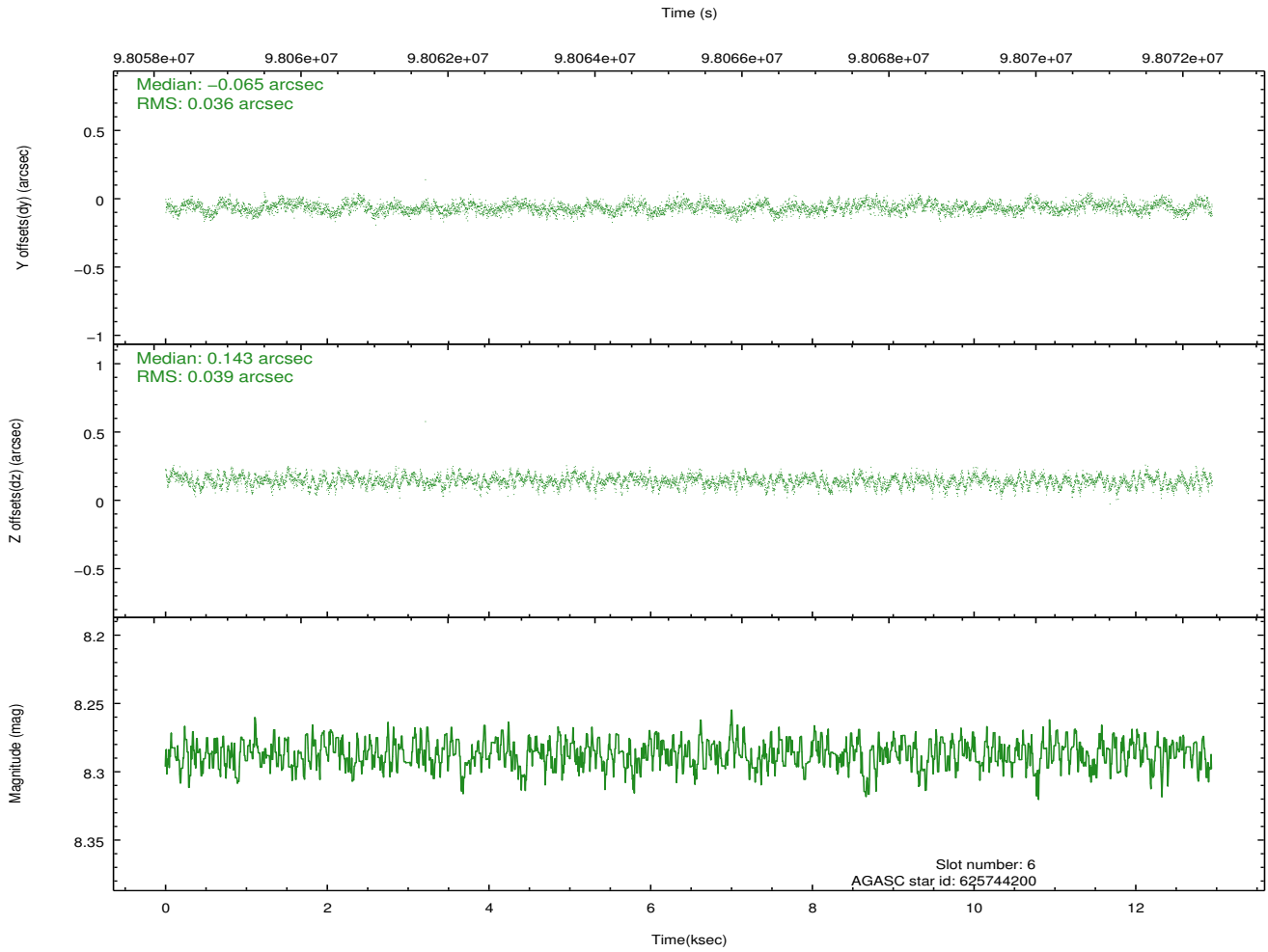
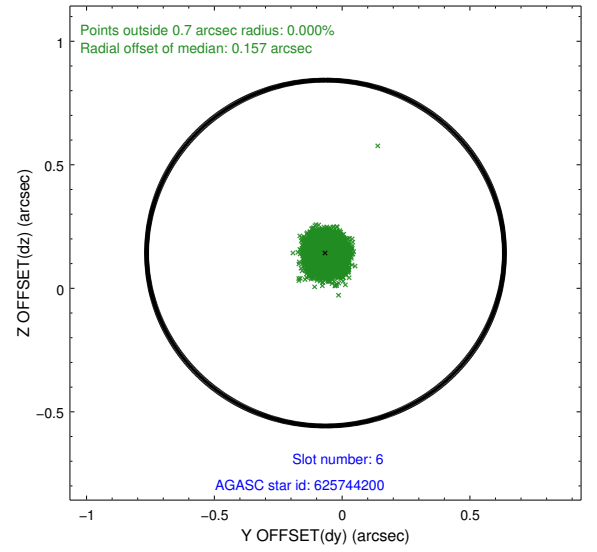
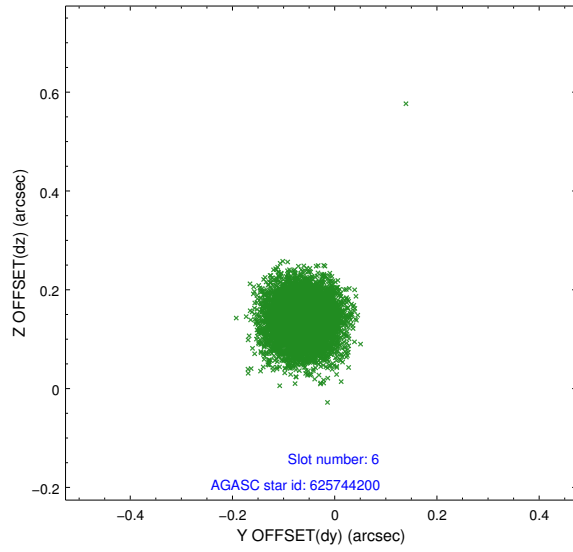
2.4.2 Slot 4



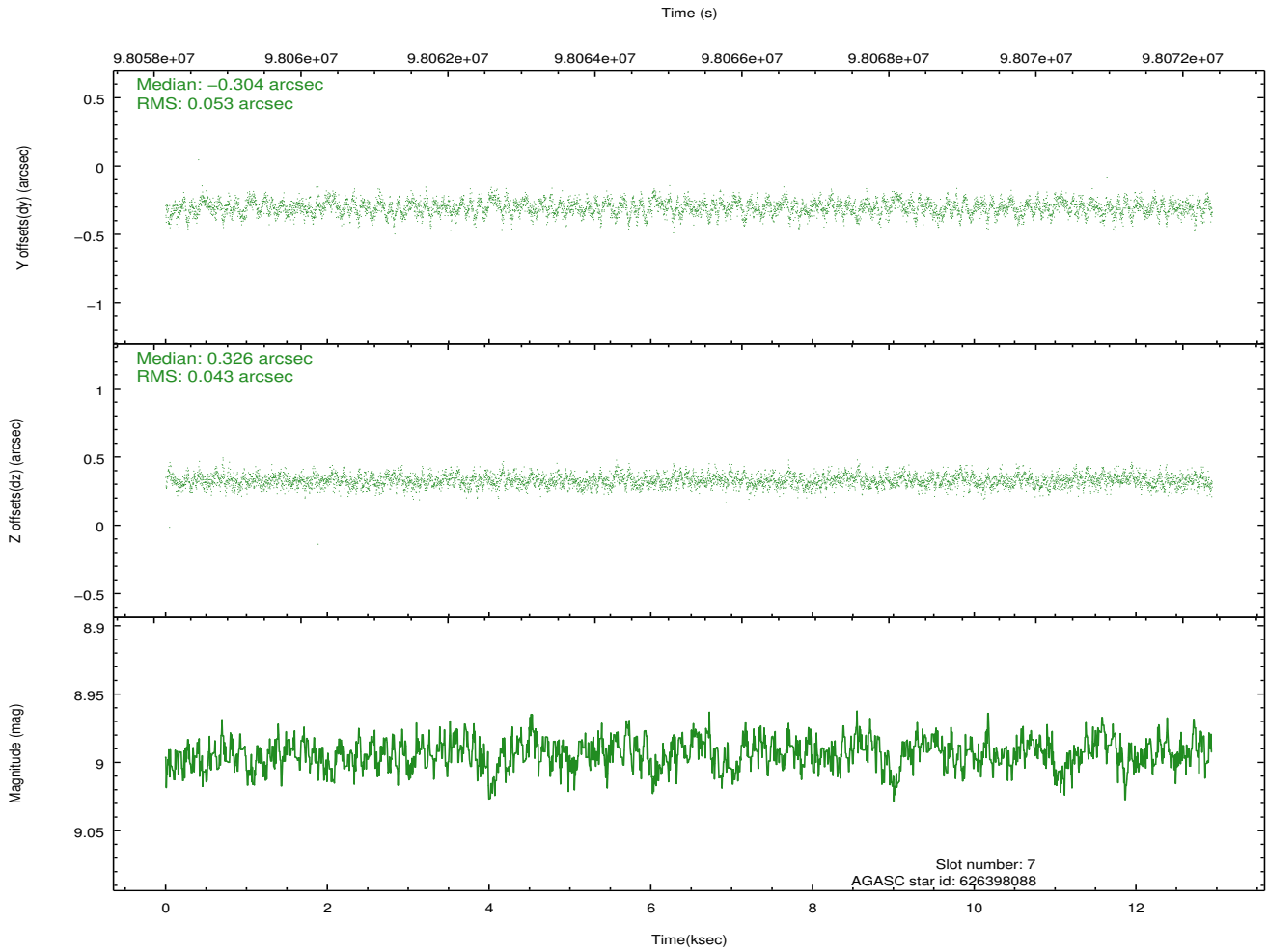
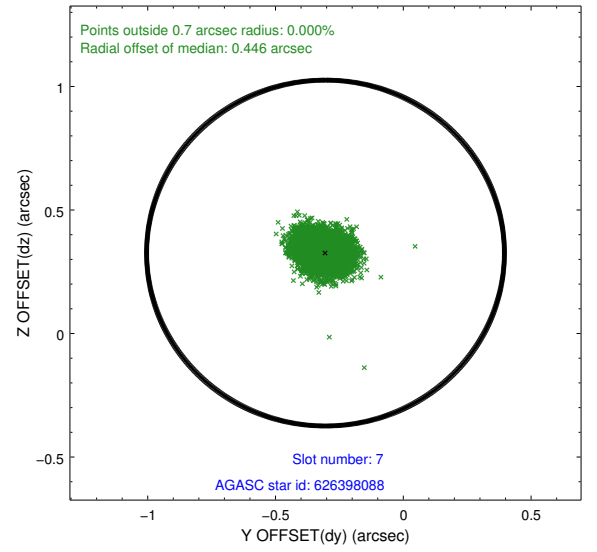
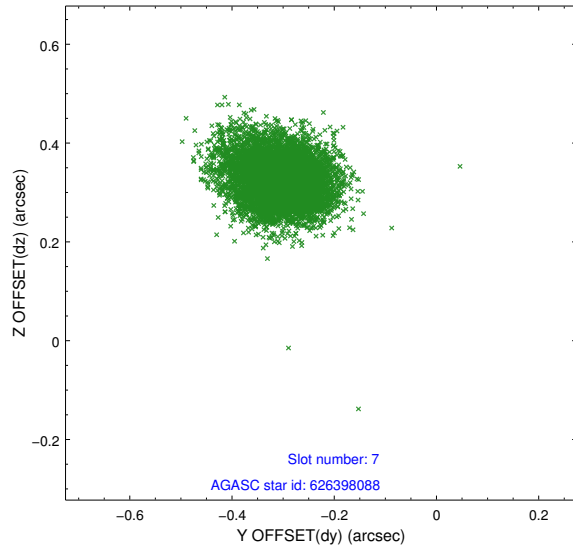
2.4.3 Slot 5



2.4.4 Slot 6

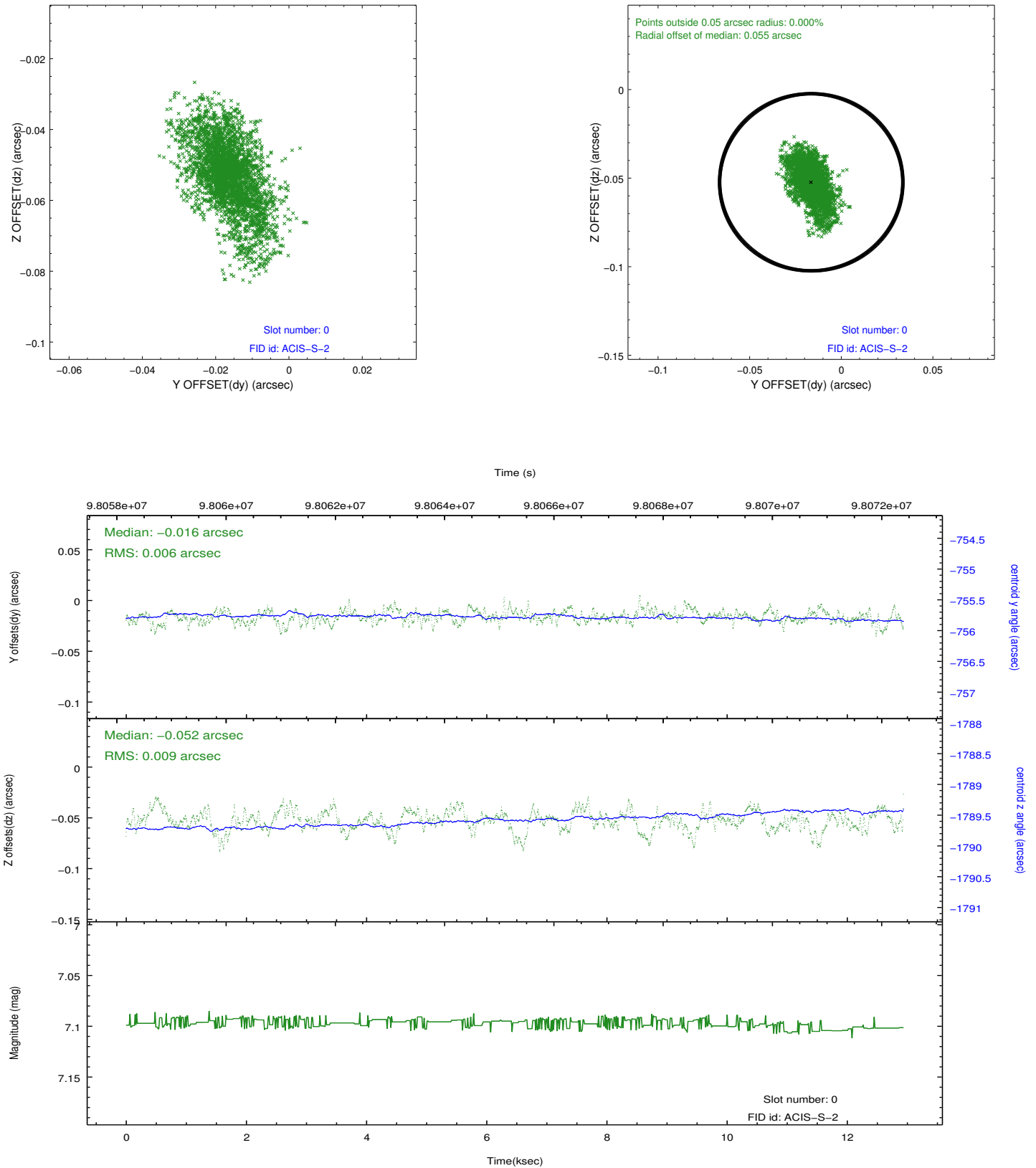


2.4.5 Slot 7

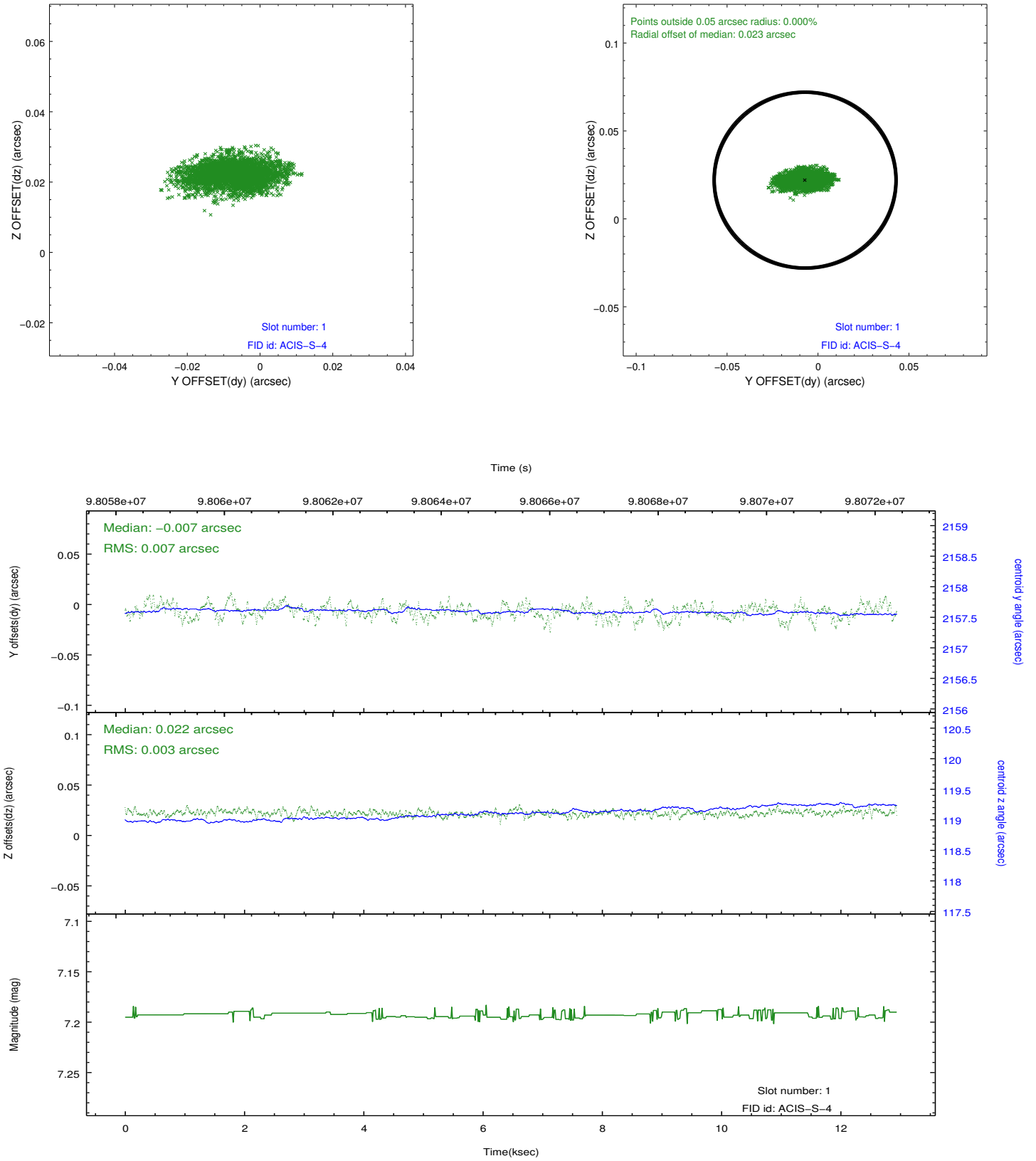


2.5 FID Slots

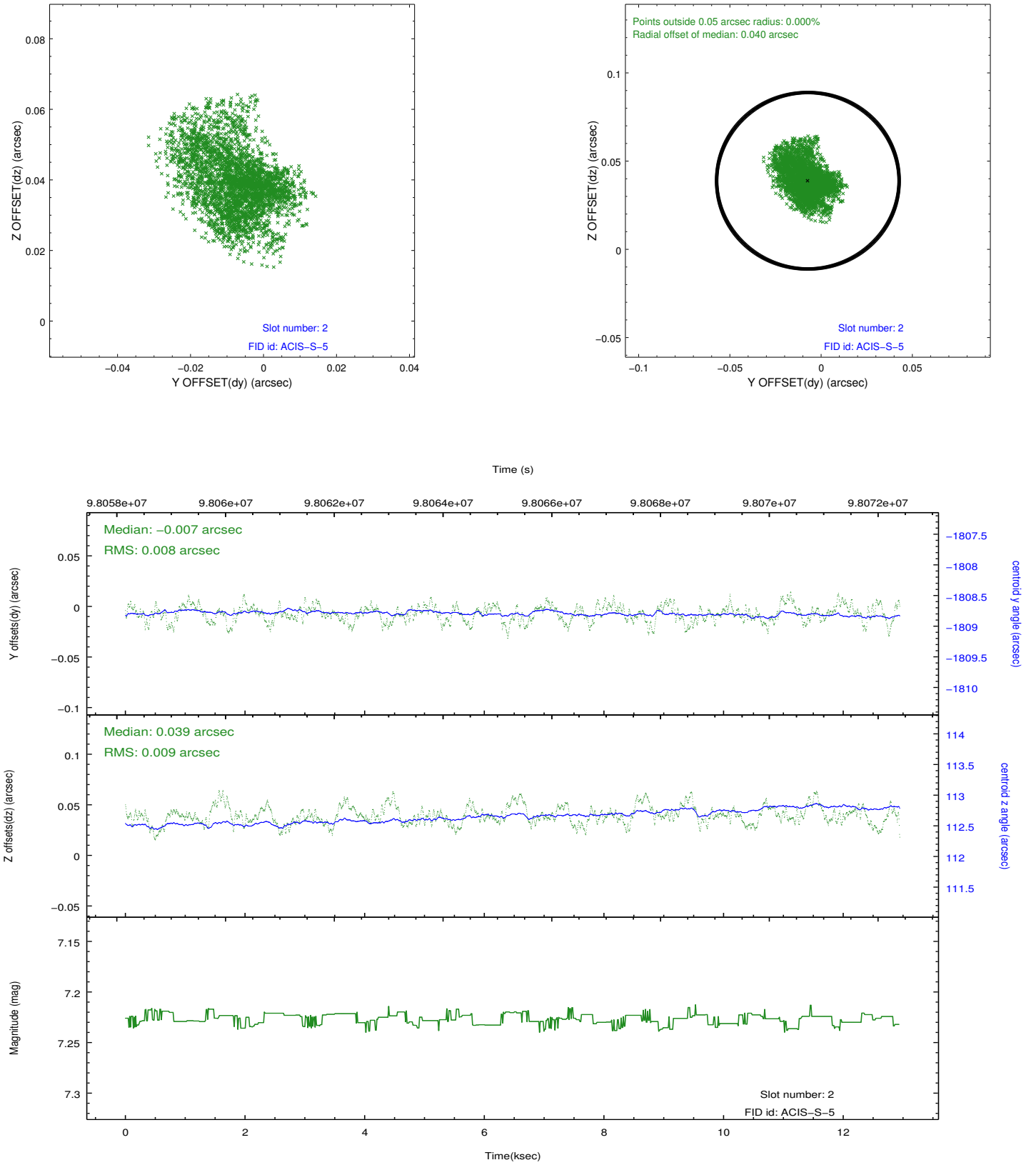
2.5.1 Slot 0



2.5.2 Slot 1

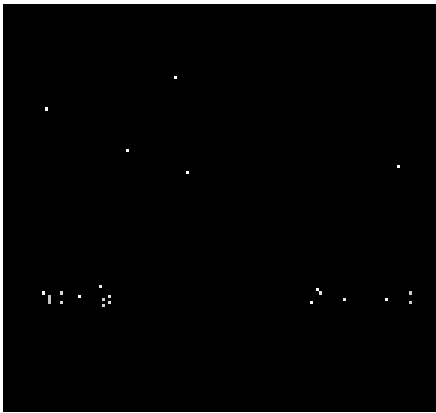


2.5.3 Slot 2

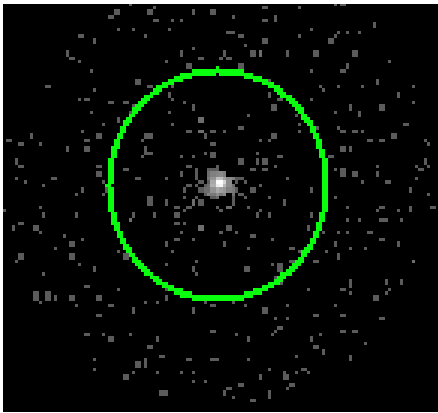


3 Gratings

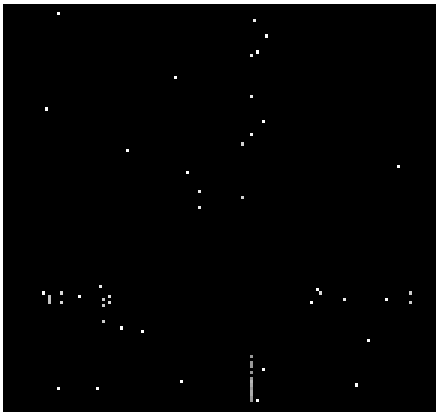
3.1 HEG Arm



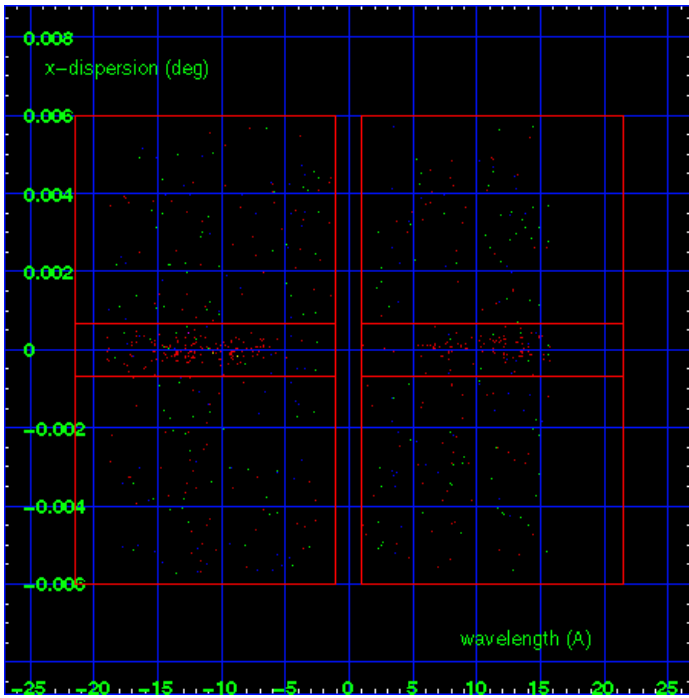
HEG Order Sort 123



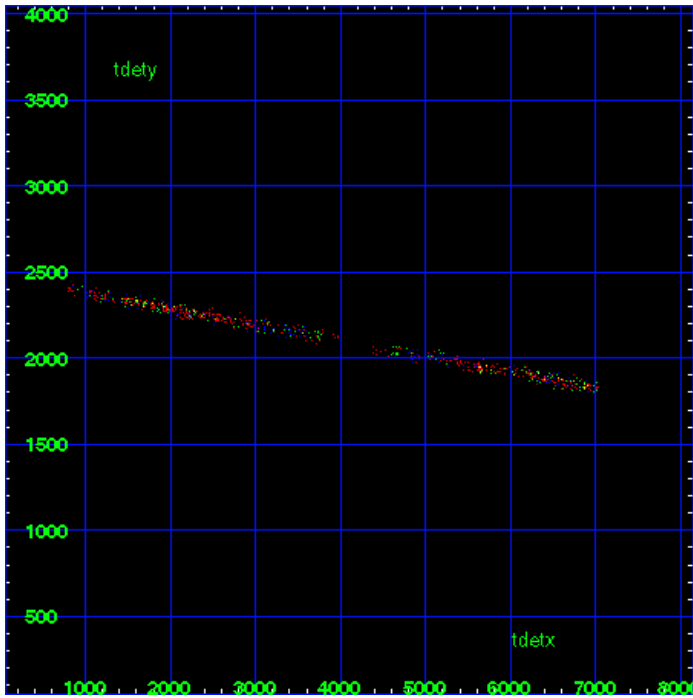
HEG Zero Order



HEG Order Sort ALL

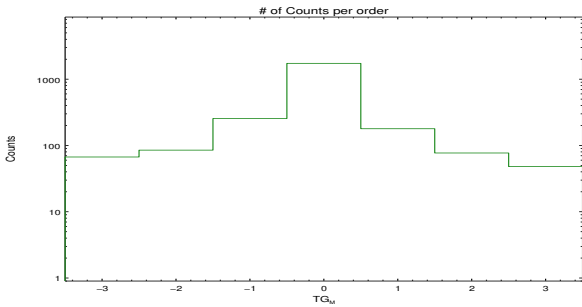


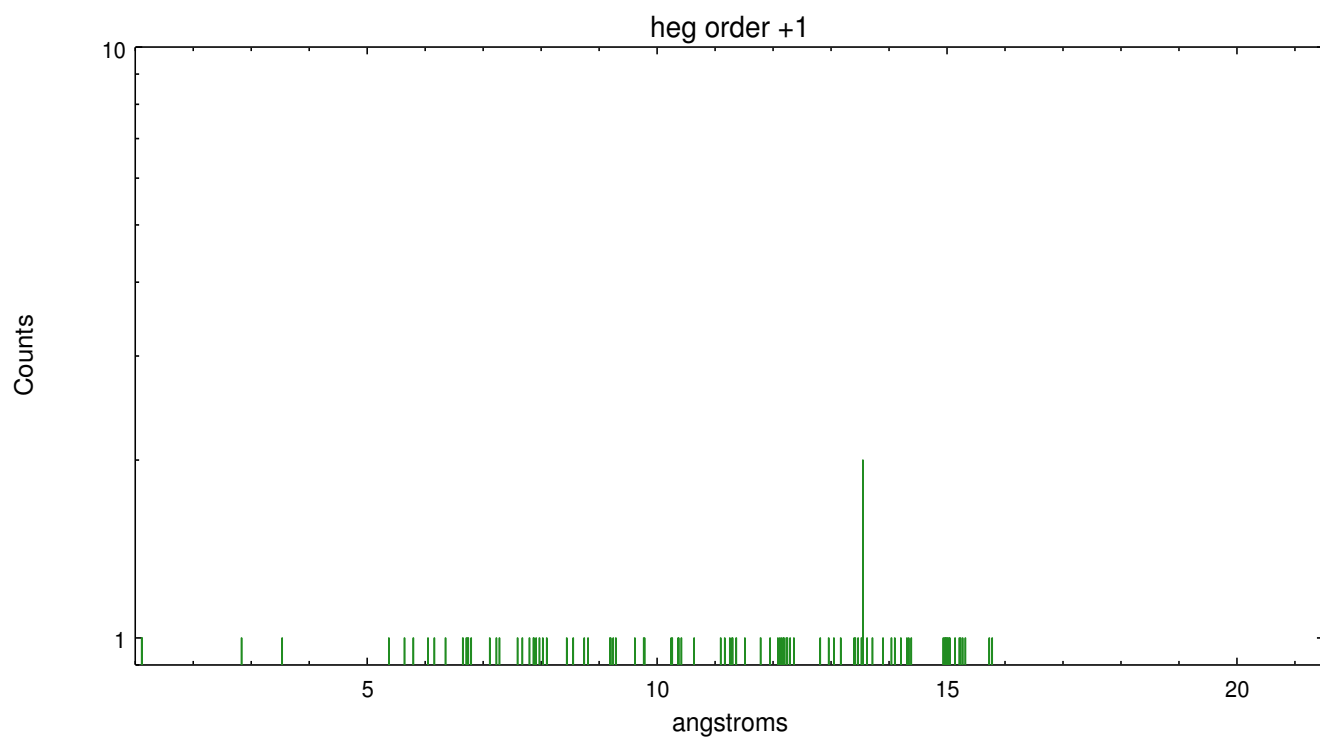
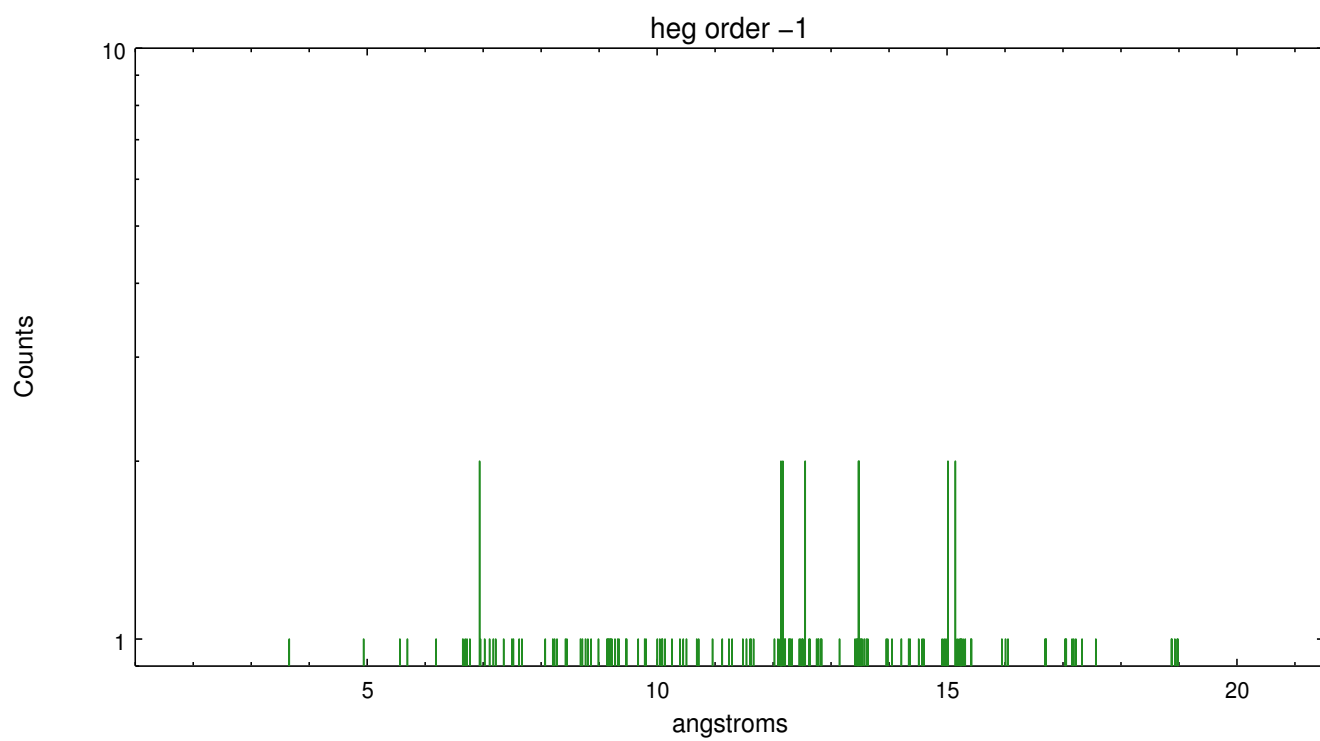
Spot Image HEG



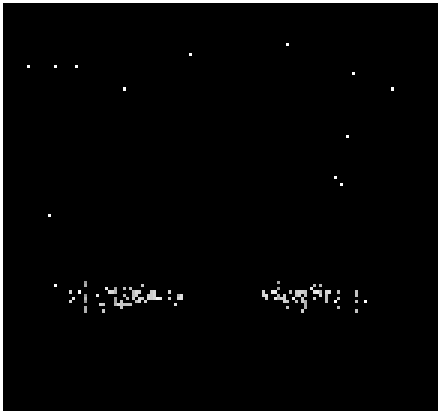
Full Detector HEG

	order -3	order -2	order -1	order 0	order 1	order 2	order 3
Events	67	85	255	1733	179	77	48

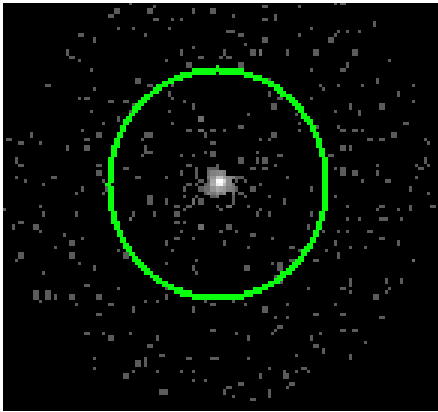




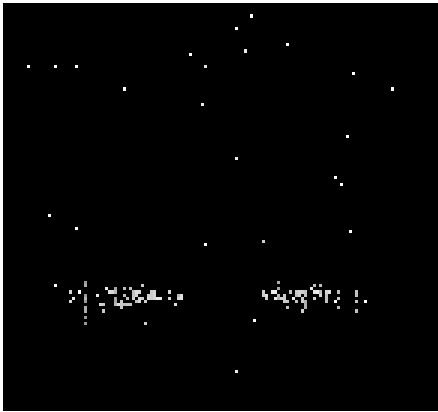
3.2 MEG Arm



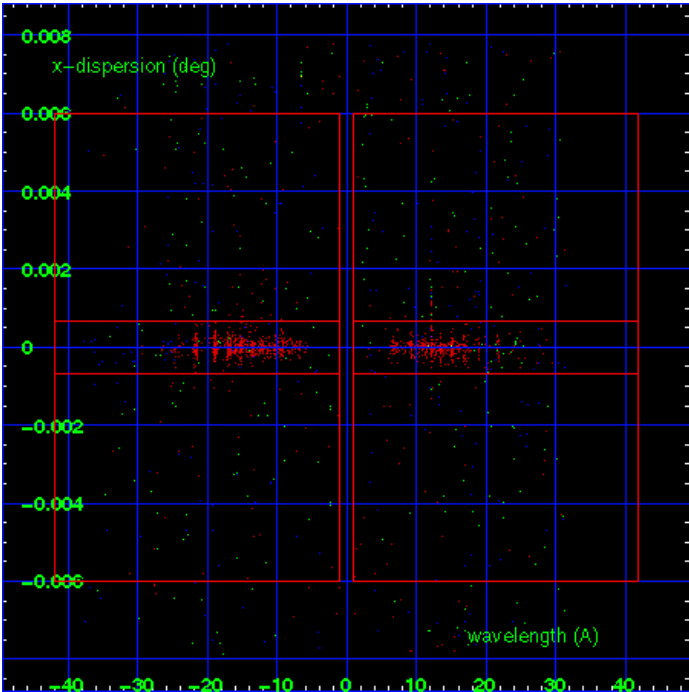
MEG Order Sort 123



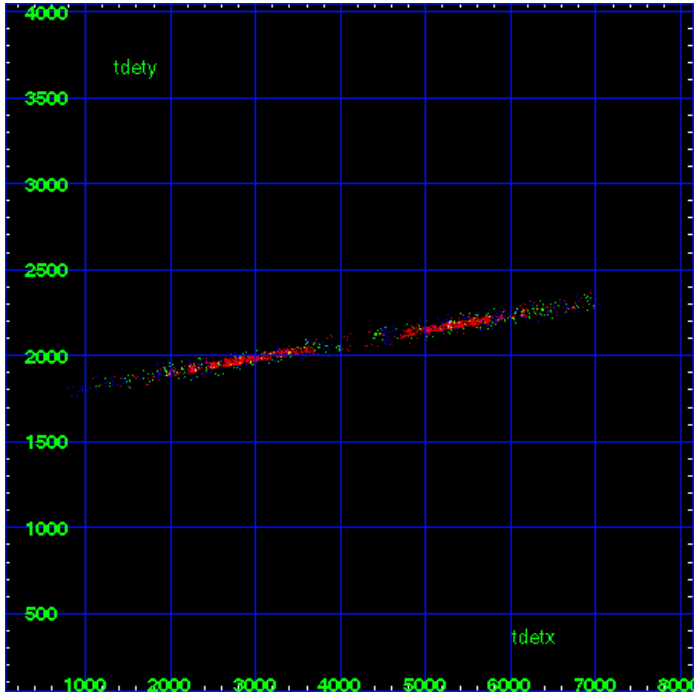
MEG Zero Order



MEG Order Sort ALL

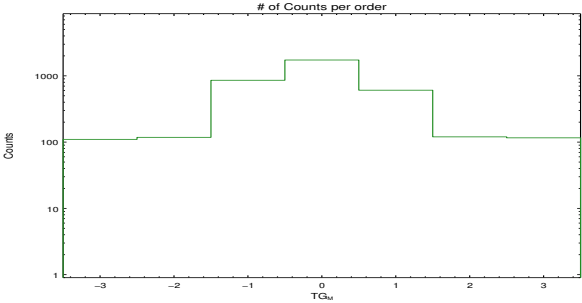


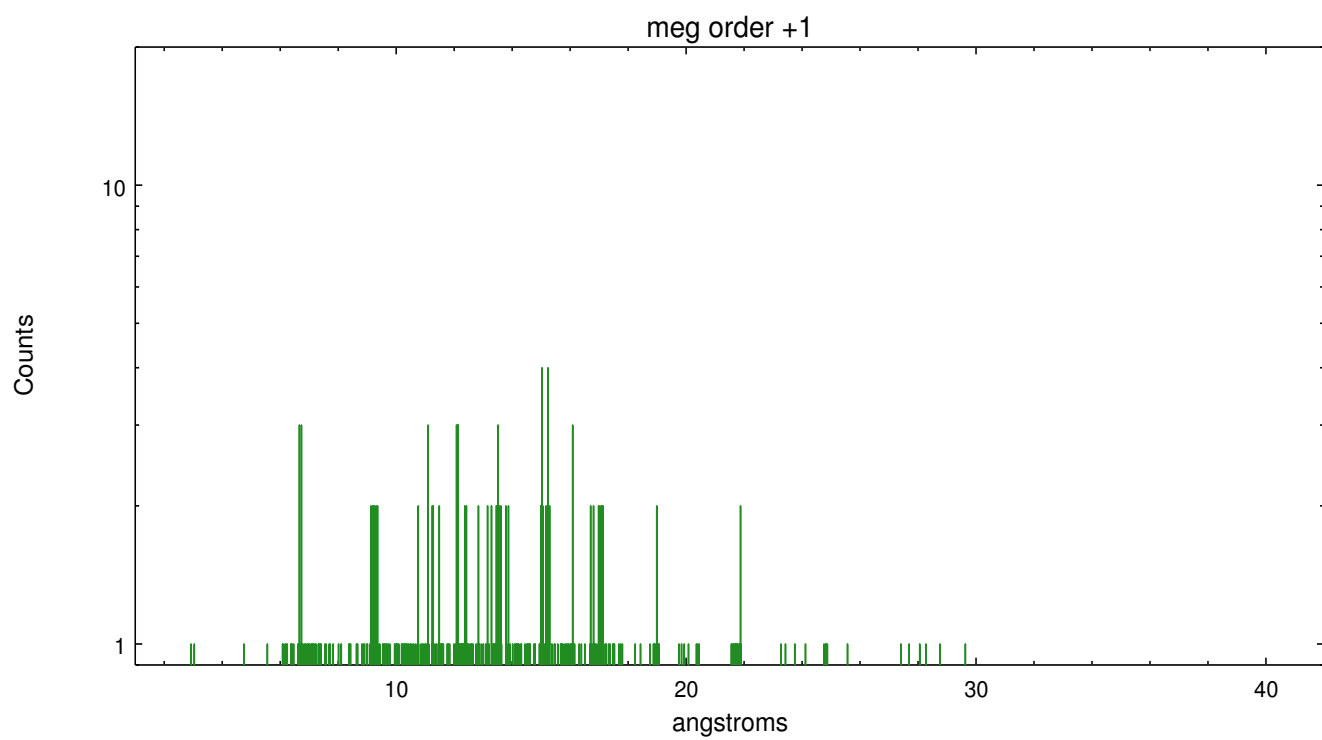
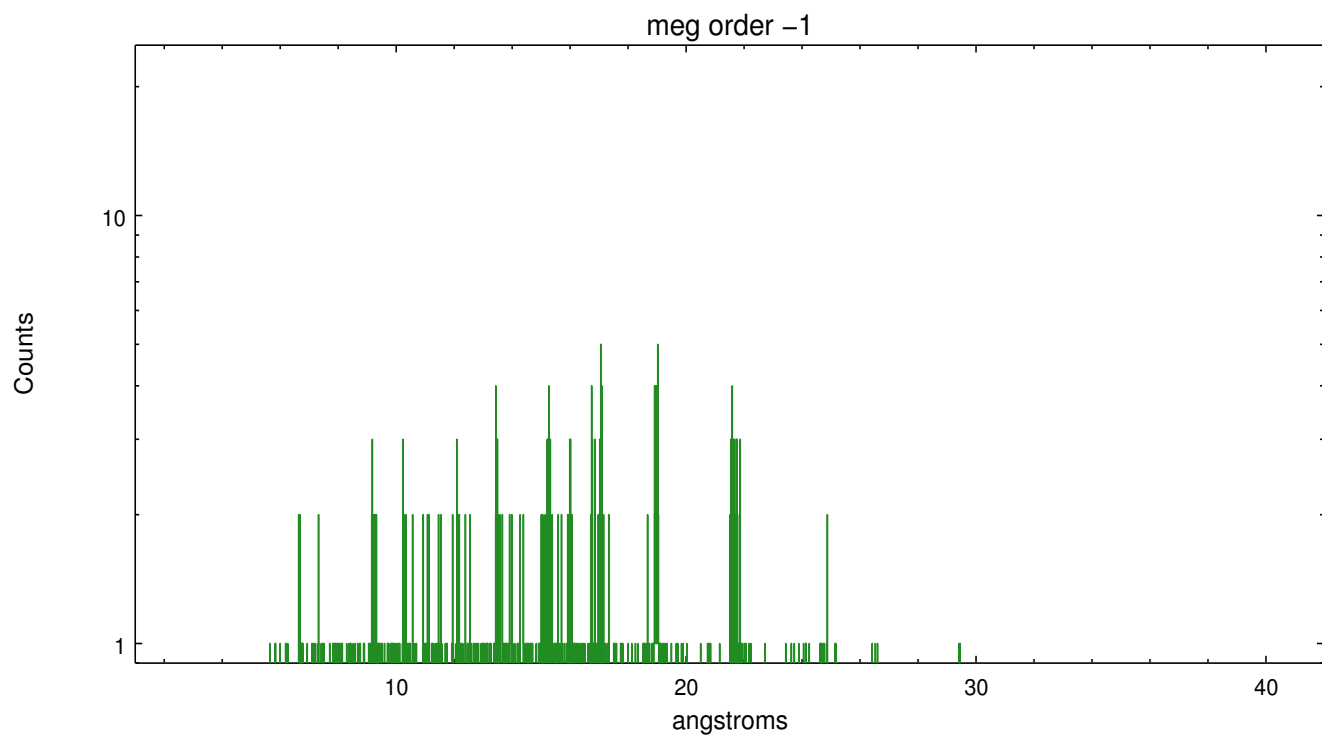
Spot Image MEG



Full Detector MEG

	order -3	order -2	order -1	order 0	order 1	order 2	order 3
Events	110	118	857	1733	607	120	116





A Summary

A.1 Status

V&V Scientist	Joy Nichols
V&V Date (YYYY-MM-DD)	2012.09.21
V&V Edition	1
V&V Disposition and Status	OK
V&V Charge Time	12.915

A.2 Comments

Multiple sources; extraction is of iota Ori. Another source, HBC 465, lies in center of HEG plus region. Multiple sources in the field may cause contamination of the primary extraction at some wavelengths. Additional sources in field (zeroth order only).