

V&V Reference Report

L2 ASCDS Version : 7.6.10

Observation 1893 - L2 Version 001
Chandra X-Ray Center

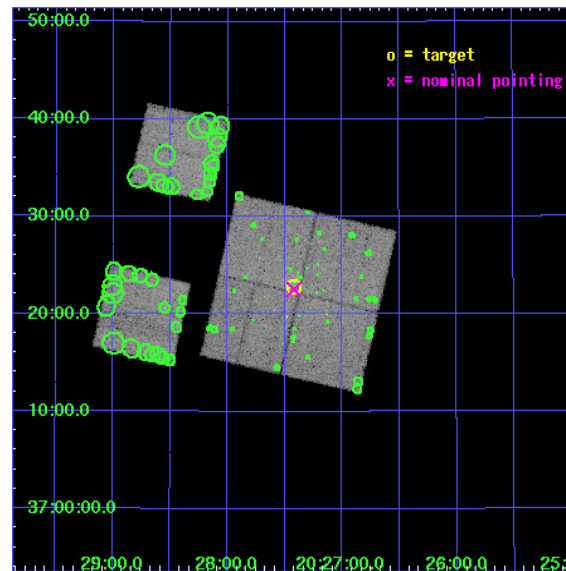
L2 Processing Date : Jan 13 2007

Contents

1	Front	2
2	OBI	3
2.1	OBI	3
2.1.1	Images	3
2.1.2	Bias	3
2.1.3	Parameters	4
2.1.4	Events	4
2.2	Compared Parameters	5
2.3	Aspect	6
2.4	Star Slots	9
2.4.1	Slot 3	9
2.4.2	Slot 4	10
2.4.3	Slot 5	11
2.4.4	Slot 6	12
2.4.5	Slot 7	13
2.5	FID Slots	14
2.5.1	Slot 0	14
2.5.2	Slot 1	15
2.5.3	Slot 2	16
3	Point Sources	17
A	Summary	18
A.1	Status	18
A.2	Comments	18

1 Front

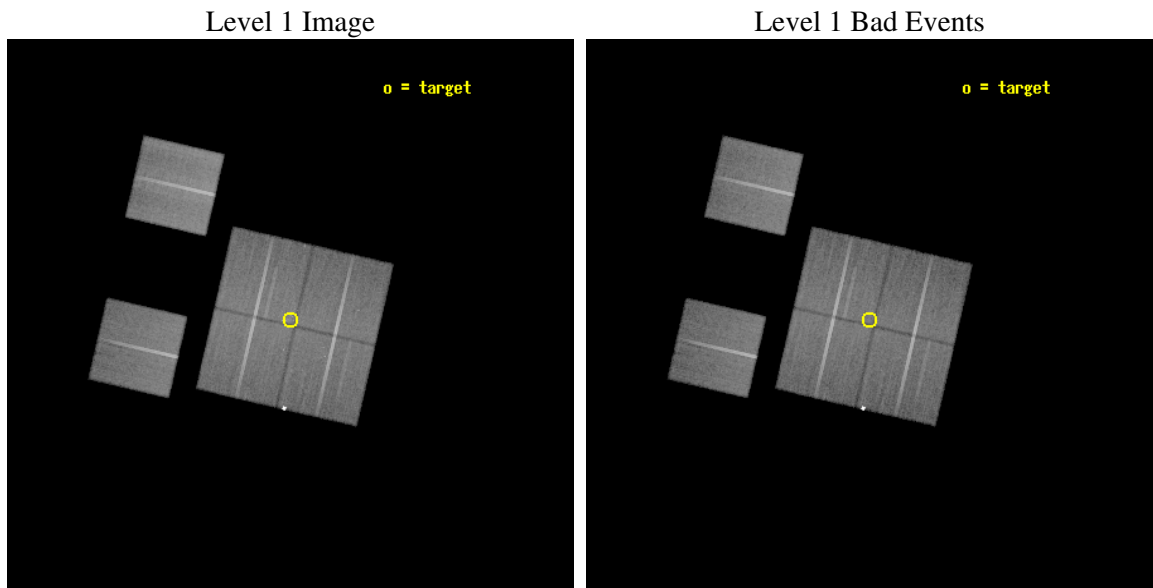
seq_num	200121
obs_id	1893
title	X-RAY PROBING OF THE BIRTH OF THE STAR
observer	Dr. Yoshitomo Maeda
object	S106 FIR
dtcycle	0
cycle	P
ra_targ	306.85625
dec_targ	37.380194
ra_nom	306.855213514
dec_nom	37.375559922209
roll_nom	283.03145205507
revision	2
ontime	44953.559061706
livetime	44384.330029083
ontime0	44953.559081629
ontime1	44956.800041869
ontime2	44956.800041869
ontime3	44953.559061706
ontime6	44956.800041869
ontime8	44956.800041869
l2events	182783



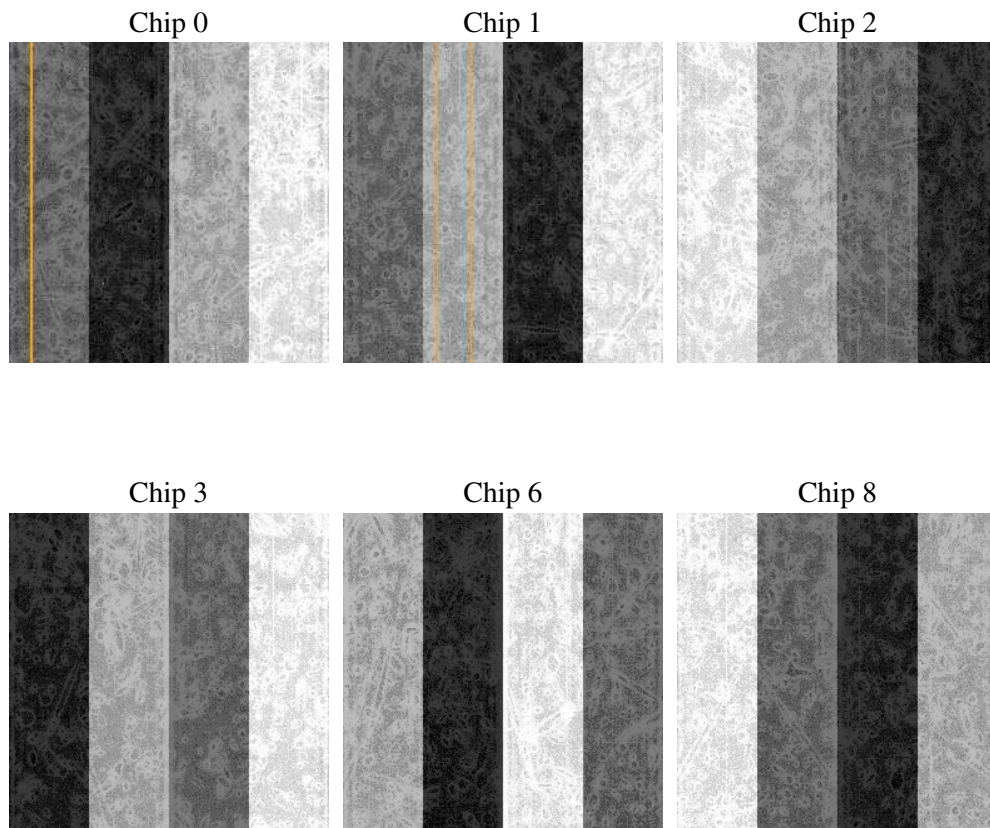
2 OBI

2.1 OBI

2.1.1 Images



2.1.2 Bias



2.1.3 Parameters

obi_num	6
ascdsver	7.6.10
caldsver	3.3.0
date	2007-01-13T15:42:35
revision	2

sched_exp_time	45000.000000
ontime	44953.559061706
ontime0	44953.559081629
ontime1	44956.800041869
ontime2	44956.800041869
ontime3	44953.559061706
ontime6	44956.800041869
ontime8	44956.800041869
l1events	1783930

2.1.4 Events

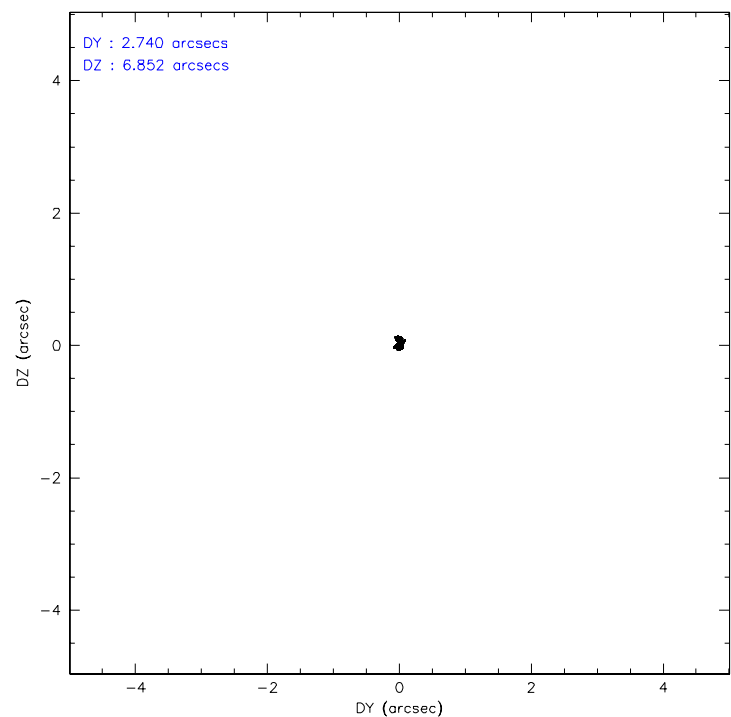
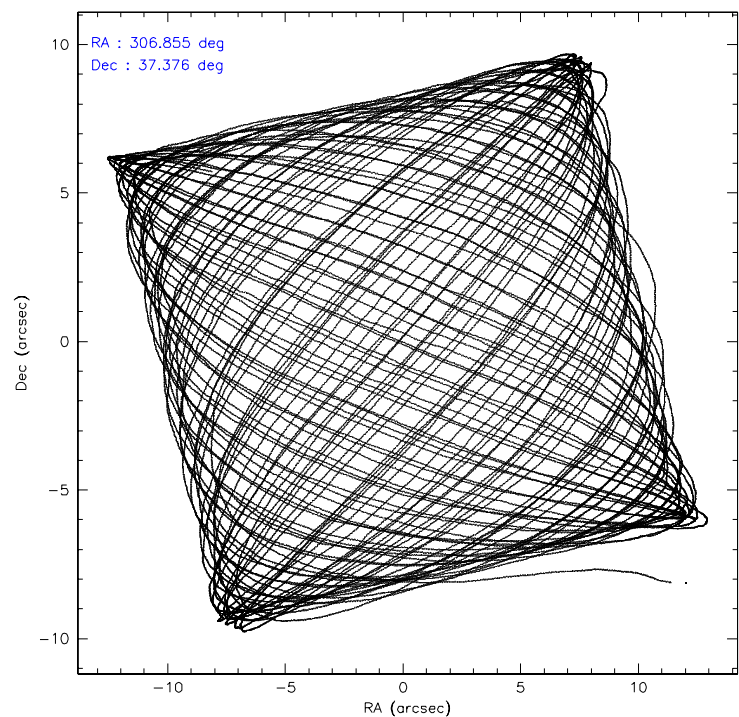
	ccd 0	ccd 1	ccd 2	ccd 3	ccd 6	ccd 8
level 1 events	279235	267766	287336	288351	282804	378438
rejected events	244545	231163	254098	252680	249492	303337
rejected %	87%	86%	88%	87%	88%	80%

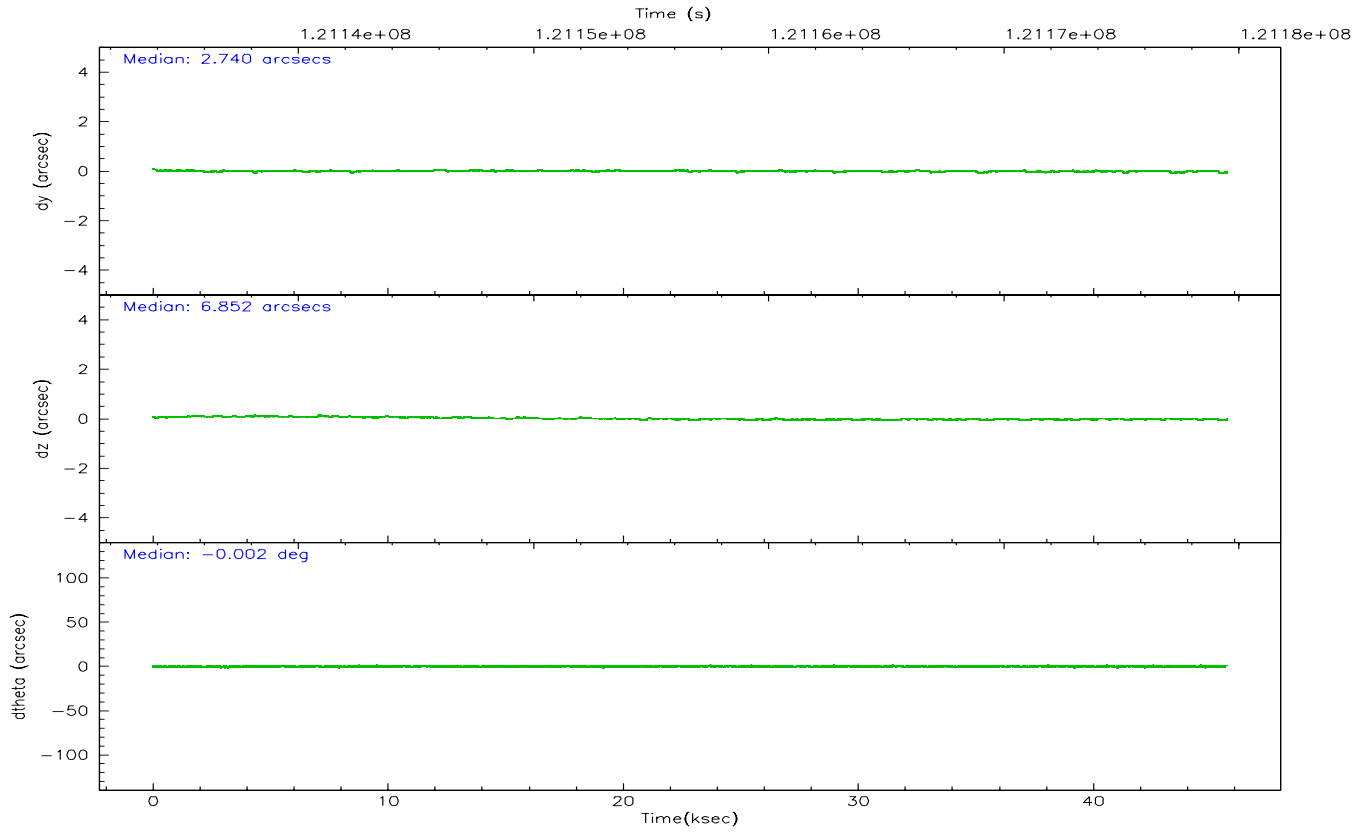
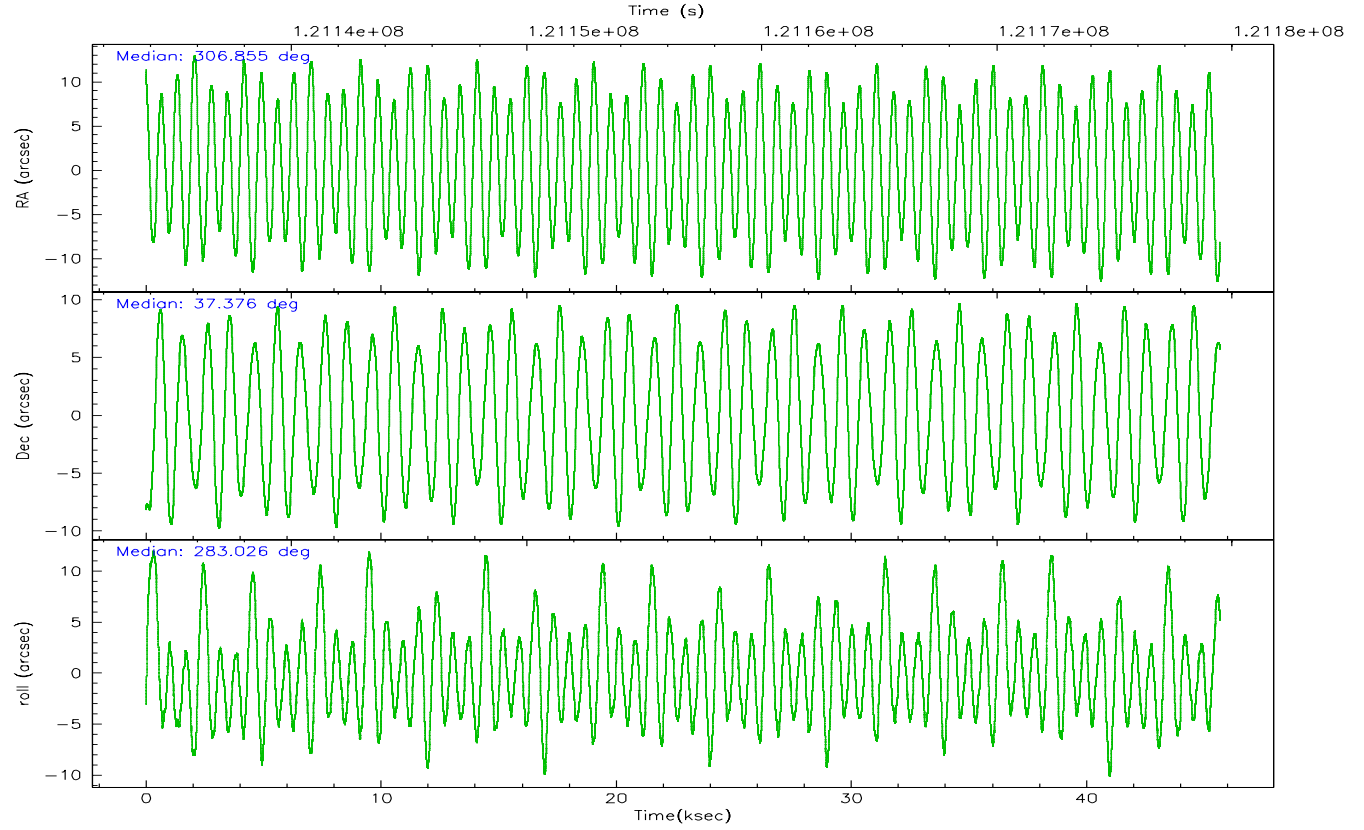
	ccd 0	ccd 1	ccd 2	ccd 3	ccd 6	ccd 8
grade 0 events	14726	15209	14004	15834	13450	23705
	5%	5%	4%	5%	4%	6%
grade 1 events	148	126	156	144	127	254
	0%	0%	0%	0%	0%	0%
grade 2 events	7452	7513	7279	7244	6888	16376
	2%	2%	2%	2%	2%	4%
grade 3 events	3478	3575	3055	3223	3300	8069
	1%	1%	1%	1%	1%	2%
grade 4 events	3099	3557	2978	3279	3124	7513
	1%	1%	1%	1%	1%	1%
grade 5 events	10536	11219	9774	11155	11904	15807
	3%	4%	3%	3%	4%	4%
grade 6 events	5948	6755	5927	6098	6555	19452
	2%	2%	2%	2%	2%	5%
grade 7 events	233848	219812	244163	241374	237456	287262
	83%	82%	84%	83%	83%	75%

2.2 Compared Parameters

Parameter	Planned	Actual	Parameter	Planned	Actual
Instrument	ACIS	ACIS	Obspar format version number	6	6
Detector	ACIS-012368	ACIS-012368	Obspar file type	PREDICTED	ACTUAL
Grating	NONE	NONE	Obspar update status	NONE	UPDATED
Data mode	FAINT	FAINT	Number of optional ACIS chips dropped	0	0
Observation mode	POINTING	POINTING	On-chip summing requested	N	N
Pointing RA	306.831624	306.8552135140003	Subarray requested	NONE	NONE
Pointing Dec	37.395559	37.37555992220905	Alternating exposures requested	N	N
Pointing Roll	282.837086	283.0314520550718	Primary exposure time	0.000000	3.2
SIM focus pos (mm)	-0.782348	-0.7809083437167272			
SIM defocus (mm)	0	0.001439871863259334			
SIM translation stage pos (mm)	-233.592463	-233.5874344608287			
SIM translation stage offset (mm)	0	-0.005018542100998502			
Observation start time	121134503.184000	121133294.80791			
Observation start date	2001-11-03T00:27:19	2001-11-03T00:08:14			
Observation end time	121179503.184000	121180476.07229			
Observation end date	2001-11-03T12:57:19	2001-11-03T13:14:36			
Read mode	TIMED	TIMED			

2.3 Aspect



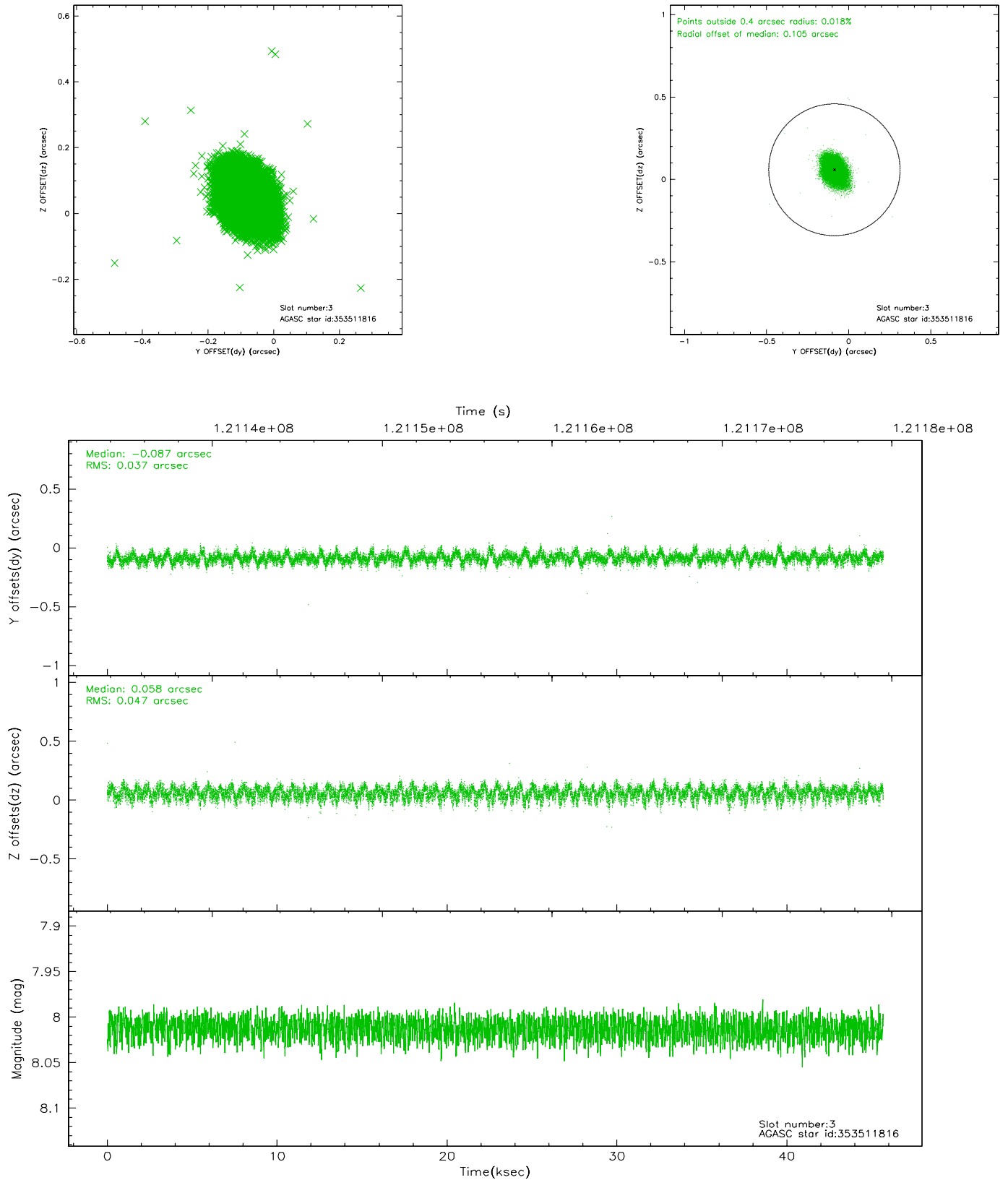


Slot Statistics

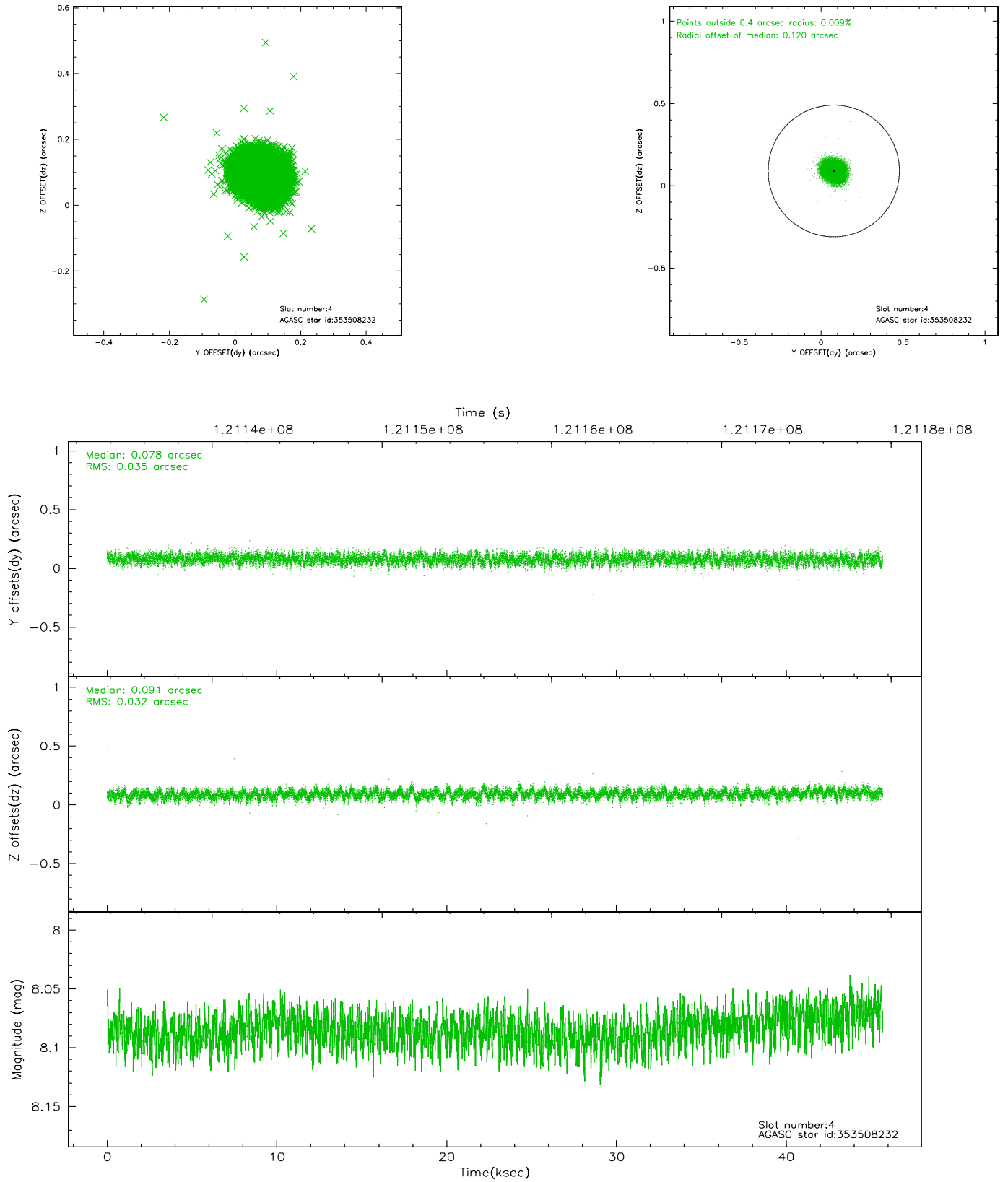
slot	status	id	mag	n_pts	med_dy	med_dz	dr1	dr2	ra	dec	mean_y	mean_z
0	FID	ACIS-I-3	7.44	11140	-0.022	0.180	0.008	0.013	0.000000	0.000000	54.46	-963.31
1	FID	ACIS-I-5	7.24	11139	-0.029	0.012	0.007	0.011	0.000000	0.000000	-1811.17	1067.22
2	FID	ACIS-I-6	7.26	11142	-0.042	-0.122	0.007	0.012	0.000000	0.000000	402.56	1711.61
3	GUIDE	353511816	8.01	22285	-0.087	0.058	0.064	0.104	306.182444	37.062347	749.77	-2083.54
4	GUIDE	353508232	8.08	22285	0.078	0.091	0.050	0.080	307.449018	36.980378	1846.80	1400.29
5	GUIDE	413142704	8.50	22277	-0.022	-0.147	0.091	0.141	306.075272	37.575430	-1118.38	-1958.71
6	GUIDE	413147024	8.72	22278	-0.047	-0.032	0.058	0.095	306.990549	38.009347	-2054.16	930.02
7	GUIDE	353502640	9.31	22271	0.082	0.029	0.099	0.159	307.735771	37.200510	1249.03	2374.50

2.4 Star Slots

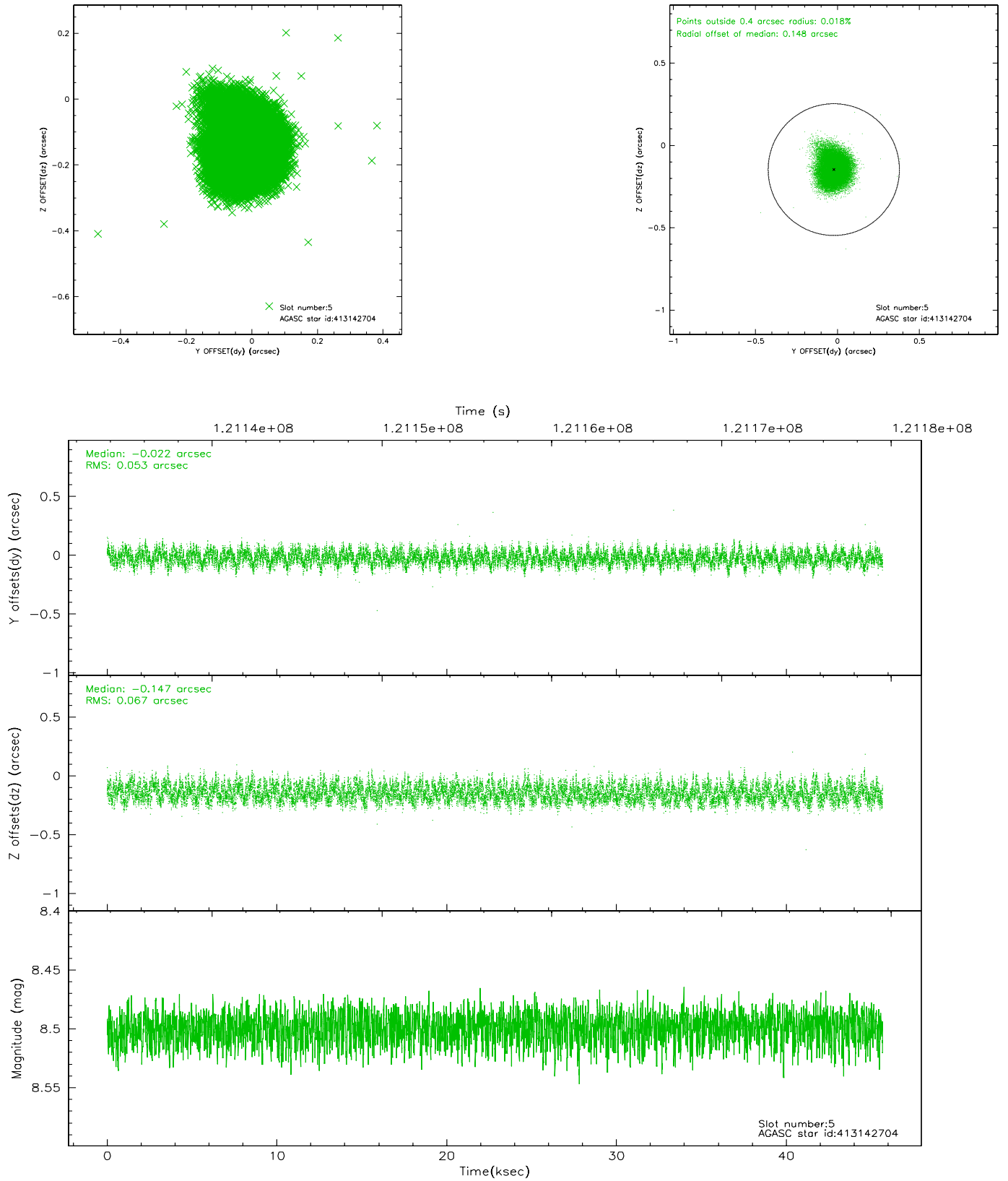
2.4.1 Slot 3



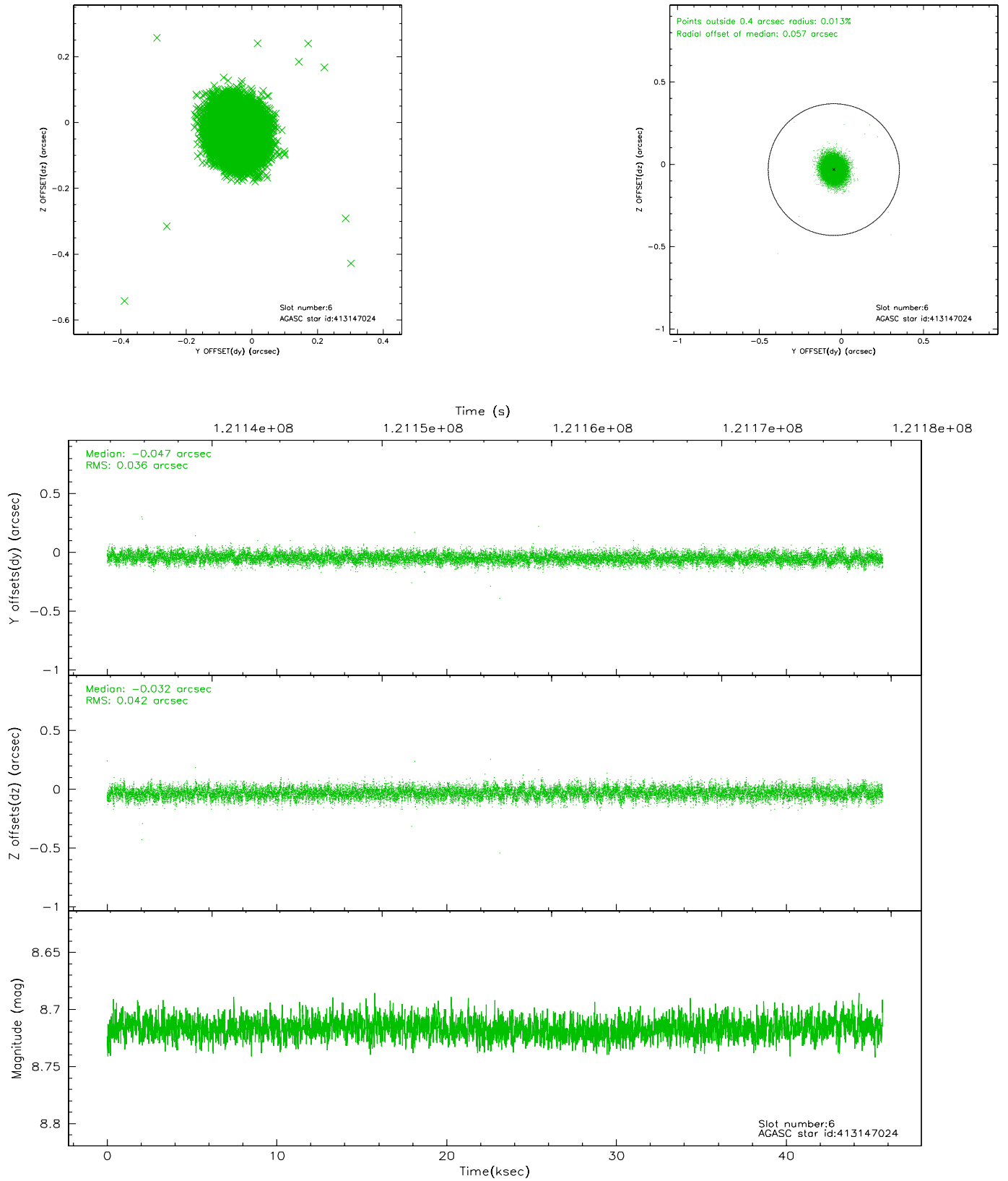
2.4.2 Slot 4



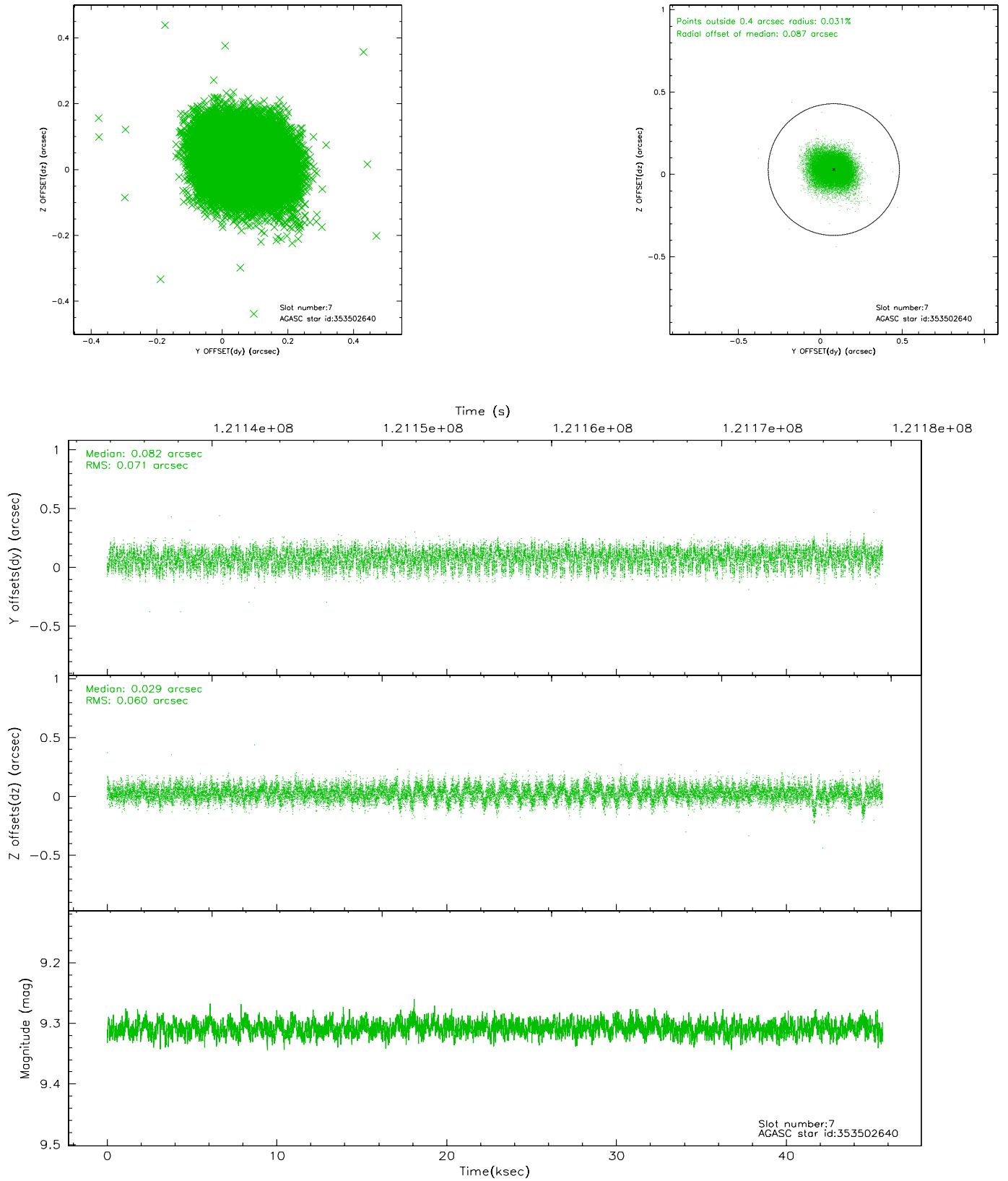
2.4.3 Slot 5



2.4.4 Slot 6

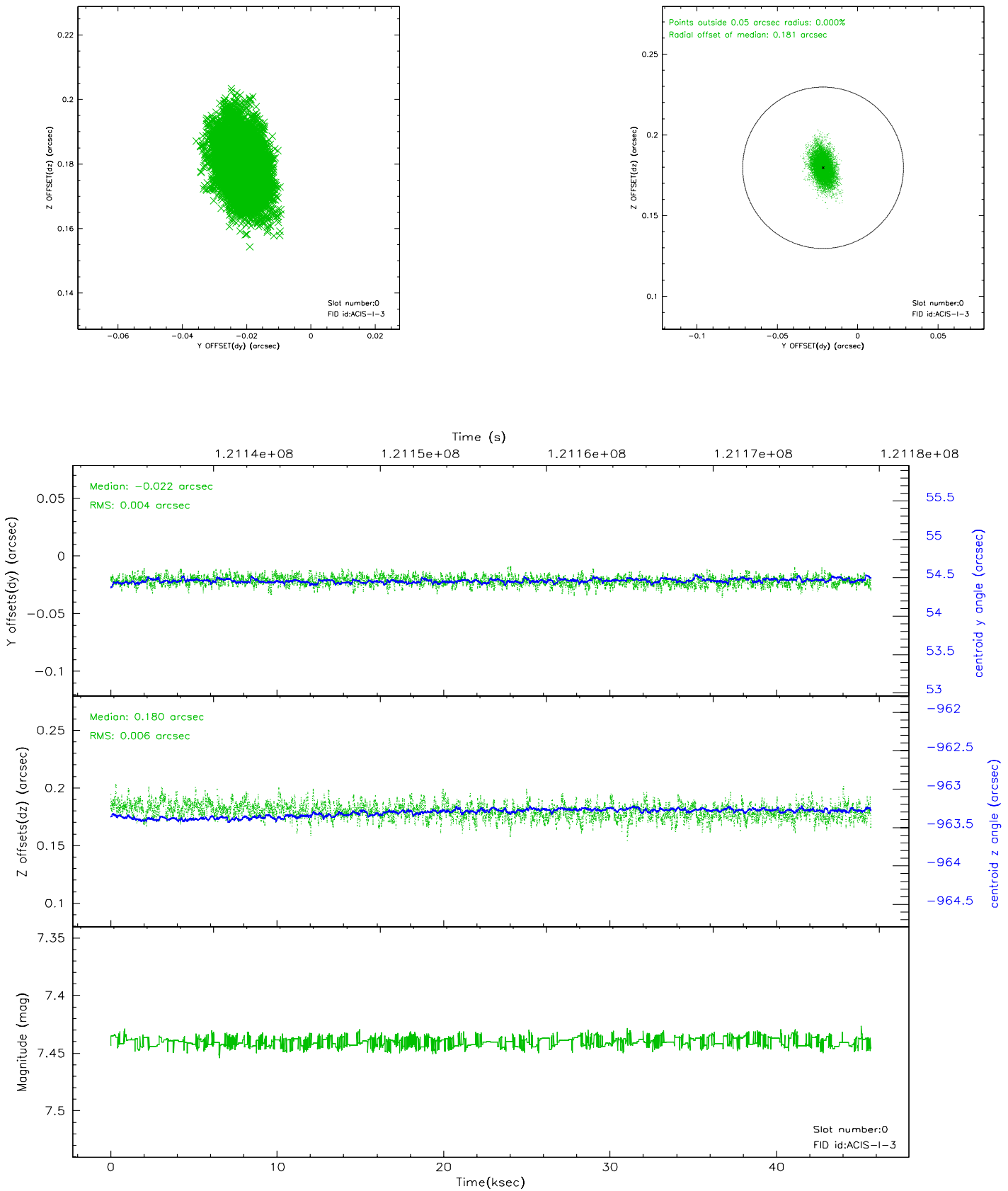


2.4.5 Slot 7

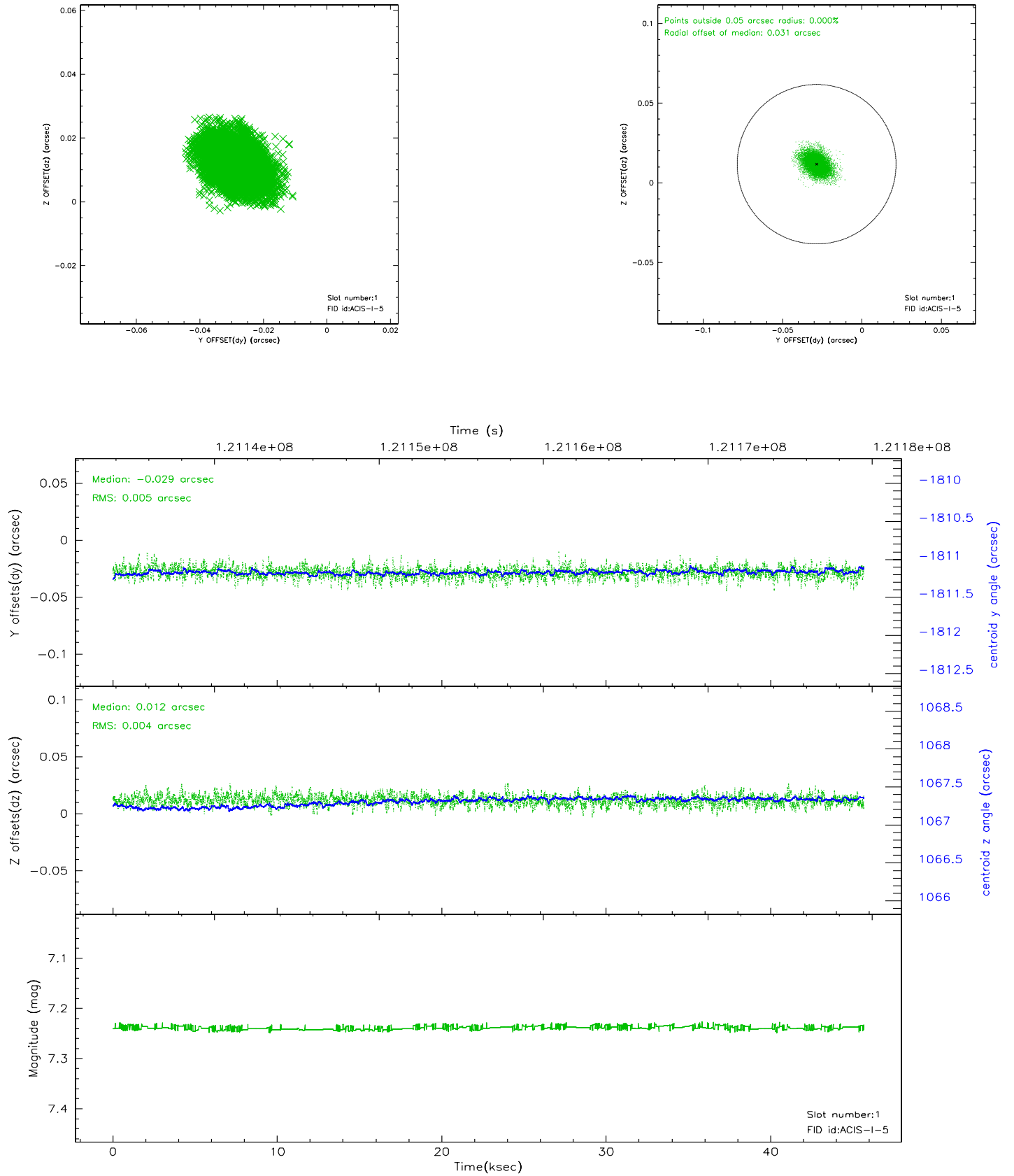


2.5 FID Slots

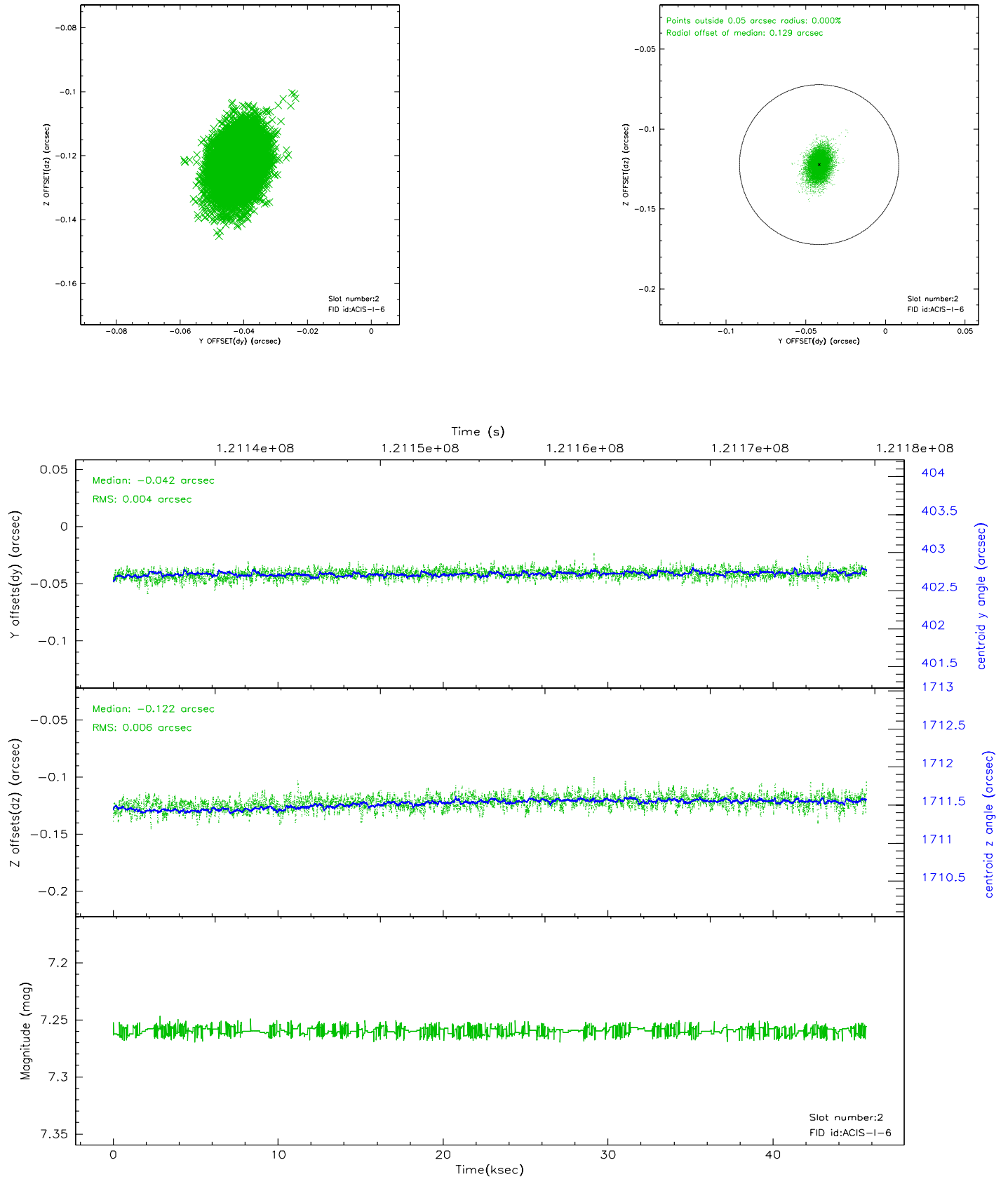
2.5.1 Slot 0



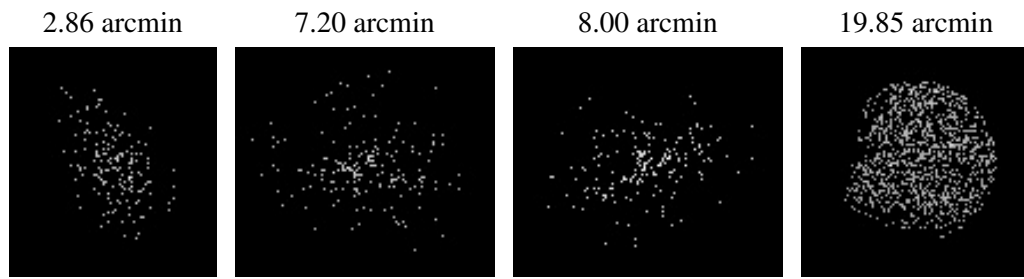
2.5.2 Slot 1



2.5.3 Slot 2



3 Point Sources



A Summary

A.1 Status

V&V Scientist	Beth Sundheim
V&V Date (YYYY-MM-DD)	2007.01.16
V&V Edition	1
V&V Disposition and Status	OK
V&V Charge Time	44.956

A.2 Comments