

V&V Reference Report

L2 ASCDS Version : 8.4.5

Observation 1864 - L2 Version 4
Chandra X-Ray Center

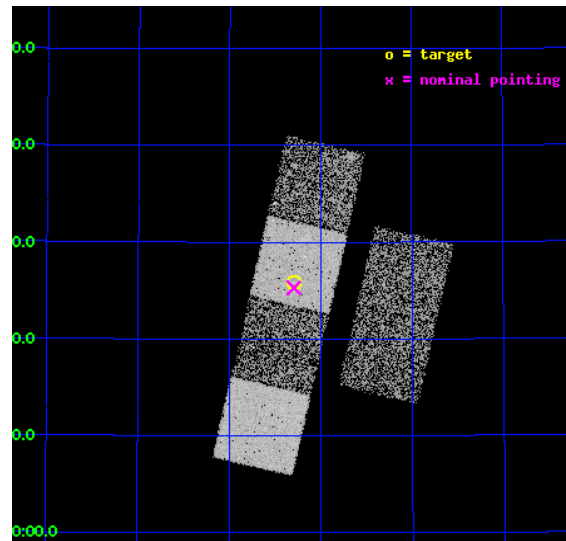
L2 Processing Date : Sep 5 2012

Contents

1	Front	2
2	OBI	3
2.1	OBI	3
2.1.1	Images	3
2.1.2	Bias	3
2.1.3	Parameters	4
2.1.4	Events	4
2.2	Compared Parameters	5
2.3	Aspect	6
2.4	Star Slots	9
2.4.1	Slot 3	9
2.4.2	Slot 4	10
2.4.3	Slot 5	11
2.4.4	Slot 6	12
2.4.5	Slot 7	13
2.5	FID Slots	14
2.5.1	Slot 0	14
2.5.2	Slot 1	15
2.5.3	Slot 2	16
A	Summary	17
A.1	Status	17
A.2	Comments	17

1 Front

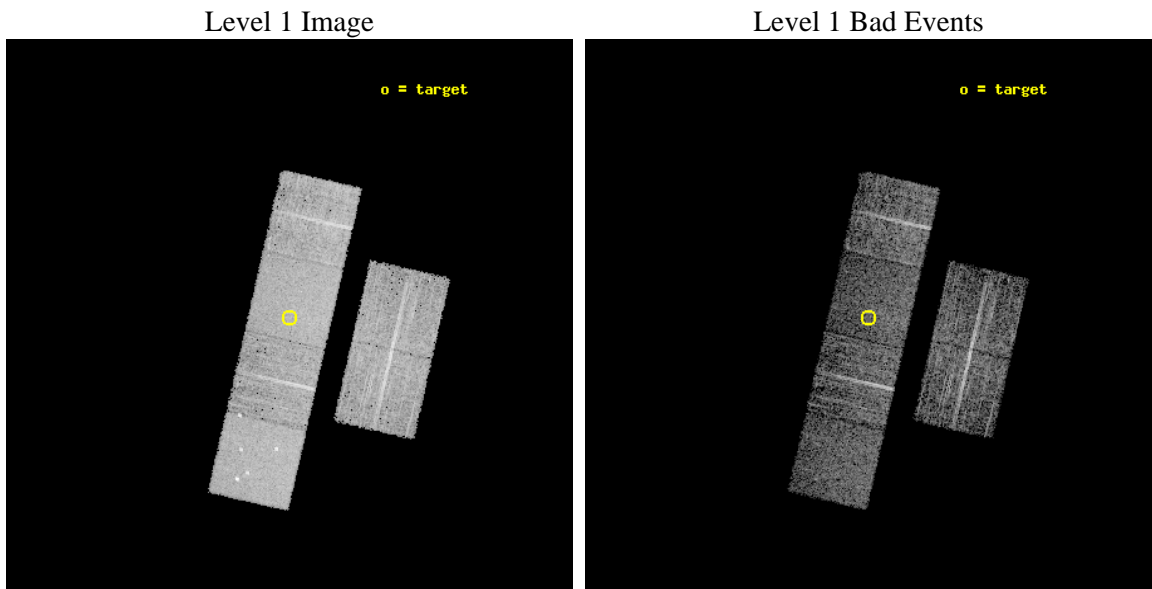
seq_num	200092	Sequence number
obs_id	1864	Observation id
title	A SEARCH FOR CORONAL X-RAYS FROM WHITE DWARFS BY CHANDRA	Proposal
observer	Dr. Zdzislaw Musielak	Principal investigator
object	LHS 1038	Source name
dtcycle	0	
cycle	P	events from which exps? Prim/Second/Both
ra_targ	3.072917	Observer's specified target RA [deg]
dec_targ	50.431361	Observer's specified target Dec [deg]
ra_nom	3.0735386673874	Nominal RA [deg]
dec_nom	50.421554363696	Nominal Dec [deg]
roll_nom	282.95376880575	Nominal Roll [deg]
revision	4	Processing version of data
ontime	5951.6156983078	Sum of GTIs [s]
livetime	5876.252756703	Livetime [s]
ontime2	5951.6567383111	Sum of GTIs [s]
ontime3	5951.4925783128	Sum of GTIs [s]
ontime5	5951.5746583045	Sum of GTIs [s]
ontime6	5951.5336183161	Sum of GTIs [s]
ontime7	5951.6156983078	Sum of GTIs [s]
ontime8	5951.4515383095	Sum of GTIs [s]
l2events	53441	Number of level 2 events



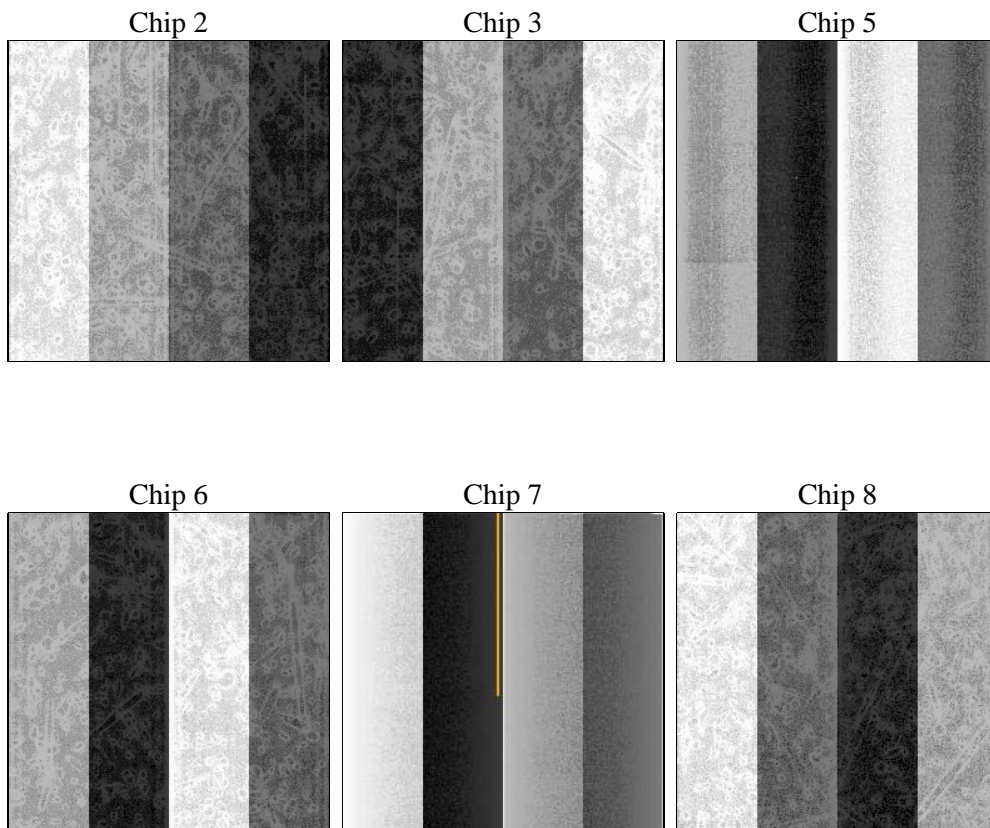
2 OBI

2.1 OBI

2.1.1 Images



2.1.2 Bias



2.1.3 Parameters

obi_num	0	Obi number	sched_exp_time	6000.000000	[s] Scheduled observation exposure time
ascdsver	8.4.5	Processing system revision	ontime	5951.6156983078	Sum of GTIs [s]
caldsver	4.5.1.1	 	ontime2	5951.6567383111	Sum of GTIs [s]
date	2012-09-05T01:44:22	Date and time of file creation	ontime3	5951.4925783128	Sum of GTIs [s]
revision	4	Processing version of data	ontime5	5951.5746583045	Sum of GTIs [s]
			ontime6	5951.5336183161	Sum of GTIs [s]
			ontime7	5951.6156983078	Sum of GTIs [s]
			ontime8	5951.4515383095	Sum of GTIs [s]
			l1events	249764	Number of level 1 events

2.1.4 Events

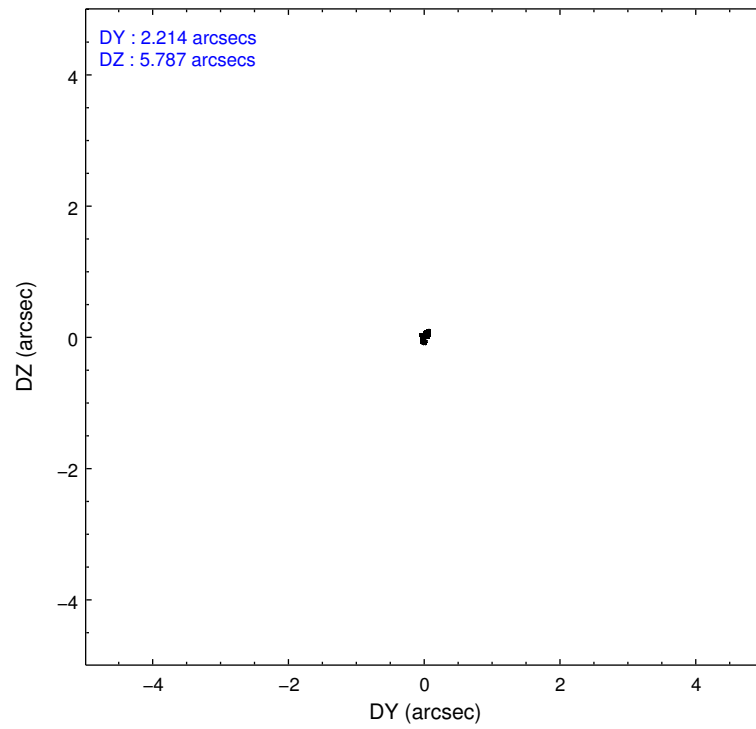
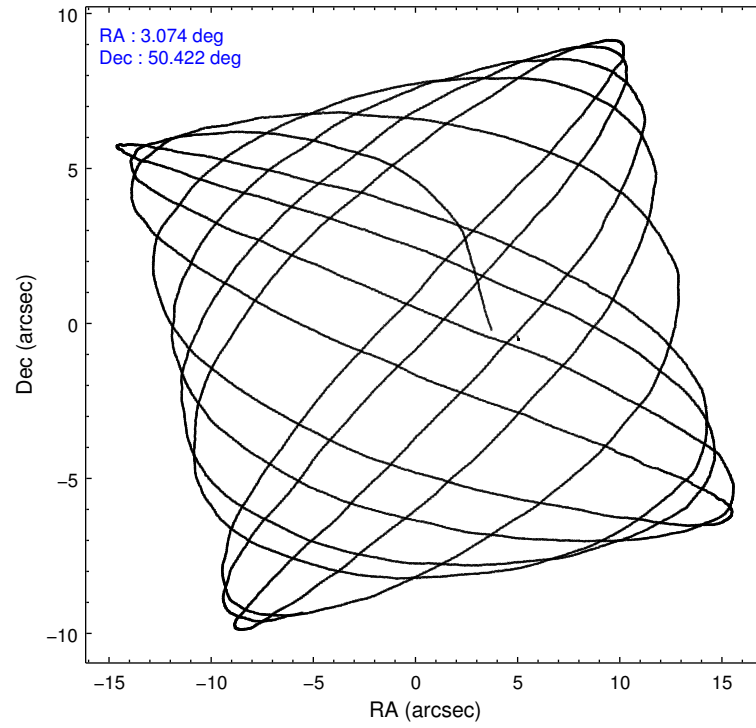
	ccd 2	ccd 3	ccd 5	ccd 6	ccd 7	ccd 8		ccd 2	ccd 3	ccd 5	ccd 6	ccd 7	ccd 8
level 1 events	37525	35385	50354	36272	45327	44901	grade 0 events	1680	1663	3258	1656	1839	2943
rejected events	33557	31502	26630	32238	26563	36003		4%	4%	6%	4%	4%	6%
rejected %	89%	89%	52%	88%	58%	80%	grade 1 events	28	12	53	23	34	19
								0%	0%	0%	0%	0%	0%
							grade 2 events	883	748	6803	839	3620	1902
								2%	2%	13%	2%	7%	4%
							grade 3 events	356	416	1071	386	1714	894
								0%	1%	2%	1%	3%	1%
							grade 4 events	345	357	962	383	1723	854
								0%	1%	1%	1%	3%	1%
							grade 5 events	1237	1336	3762	1434	4272	1837
								3%	3%	7%	3%	9%	4%
							grade 6 events	712	702	11663	776	9894	2316
								1%	1%	23%	2%	21%	5%
							grade 7 events	32284	30151	22782	30775	22231	34136
								86%	85%	45%	84%	49%	76%

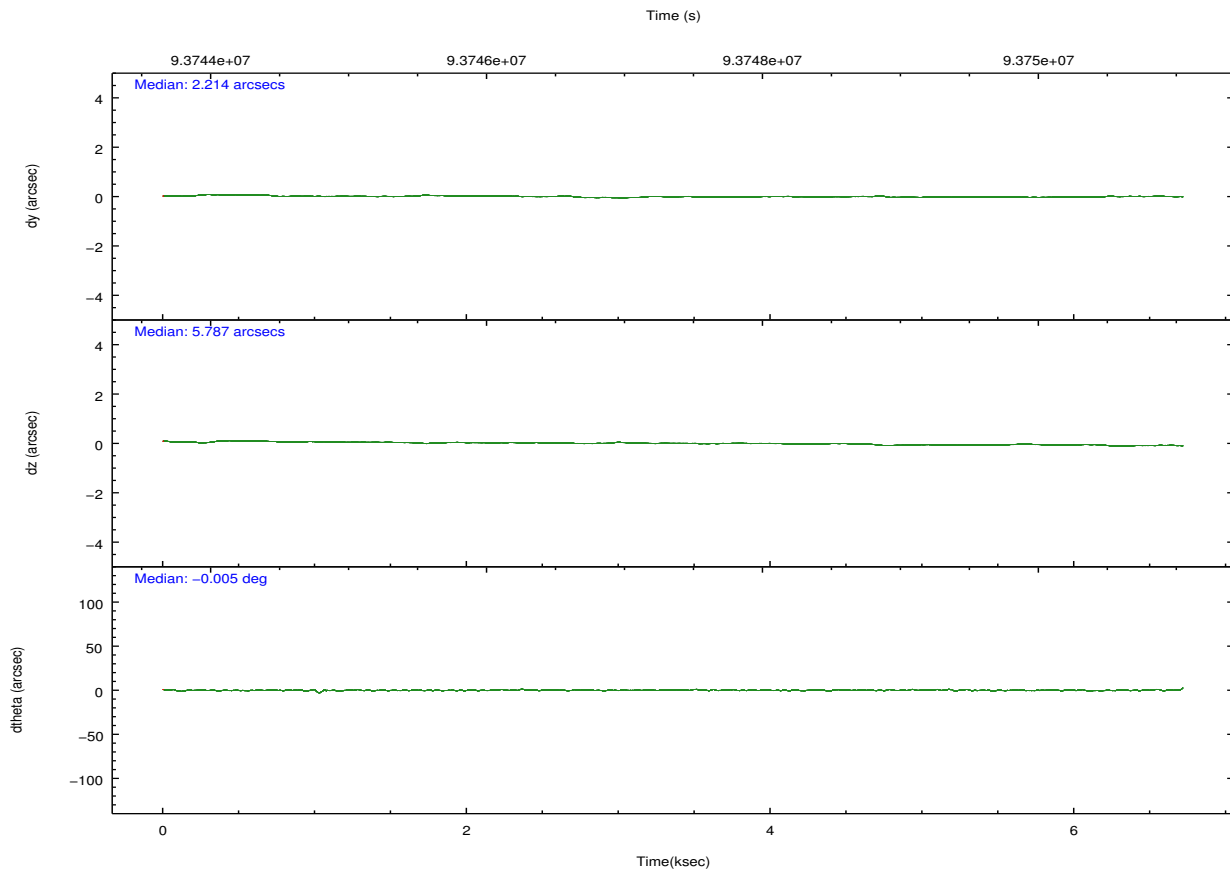
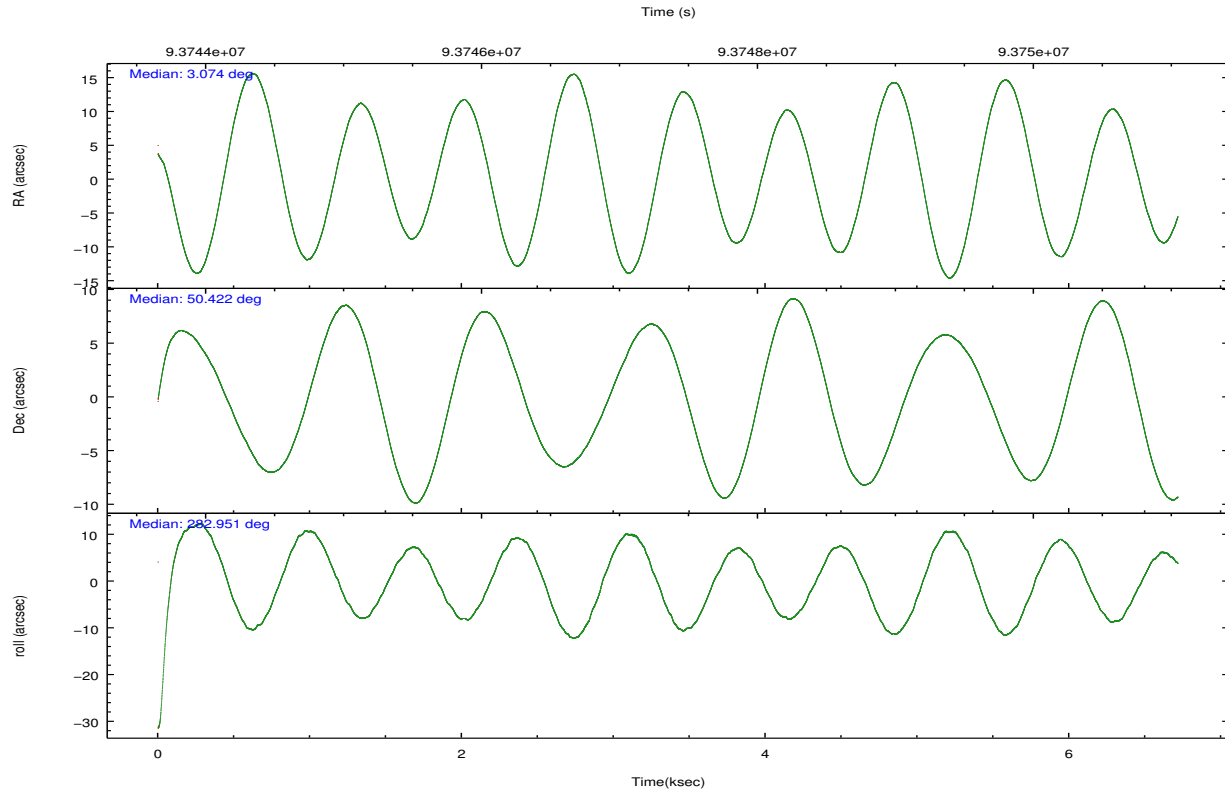
2.2 Compared Parameters

Parameter	Planned	Actual
Instrument	ACIS	ACIS
Detector	ACIS-235678	ACIS-235678
Grating	NONE	NONE
Data mode	FAINT	FAINT
Observation mode	POINTING	POINTING
[deg] Pointing RA	3.044118	3.073538667387425
[deg] Pointing Dec	50.441368	50.42155436369604
[deg] Pointing Roll	282.819873	282.9537688057467
[mm] SIM focus pos	-0.684267	-0.6828225247311905
[mm] SIM defocus	0	0.001444936568705701
[mm] SIM translation stage pos	-190.132523	-190.1400660498719
[mm] SIM translation stage offset	0	0.00754346686406393
[s] Observation start time (MET)	93744712.184000	93743487.177368
Observation start date	2000-12-21T00:10:48	2000-12-20T23:51:27
[s] Observation end time (MET)	93750712.184000	93751723.052683
Observation end date	2000-12-21T01:50:48	2000-12-21T02:08:43
Read mode	TIMED	TIMED

Parameter	Planned	Actual
Obspar format version number	7	7
Obspar file type	PREDICTED	ACTUAL
Obspar update status	NONE	UPDATED
Number of optional ACIS chips dropped	0	0
On-chip summing requested	N	N
Subarray requested	NONE	NONE
Alternating exposures requested	N	N
[s] Primary exposure time	0.000000	3.2

2.3 Aspect



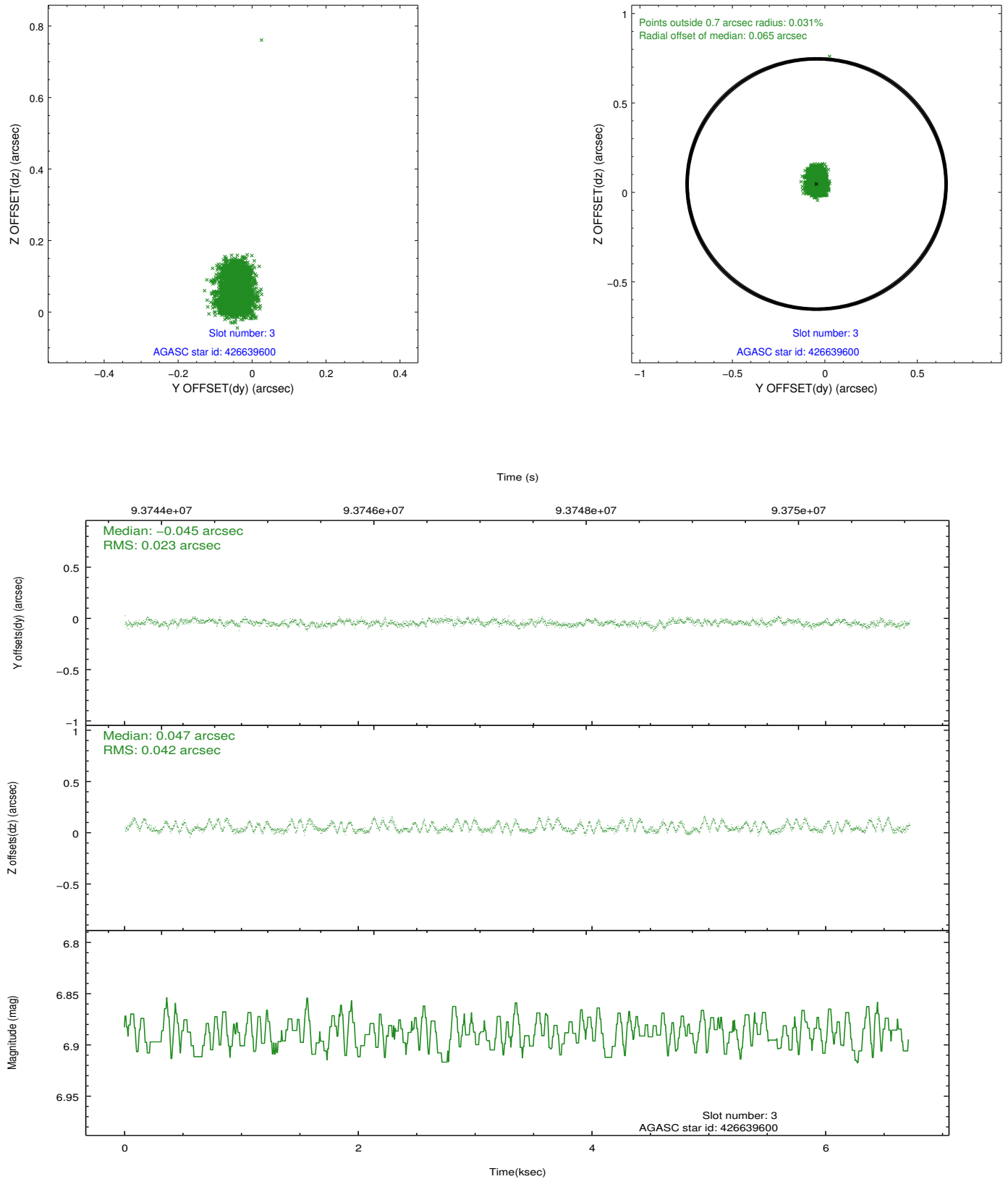


Slot Statistics

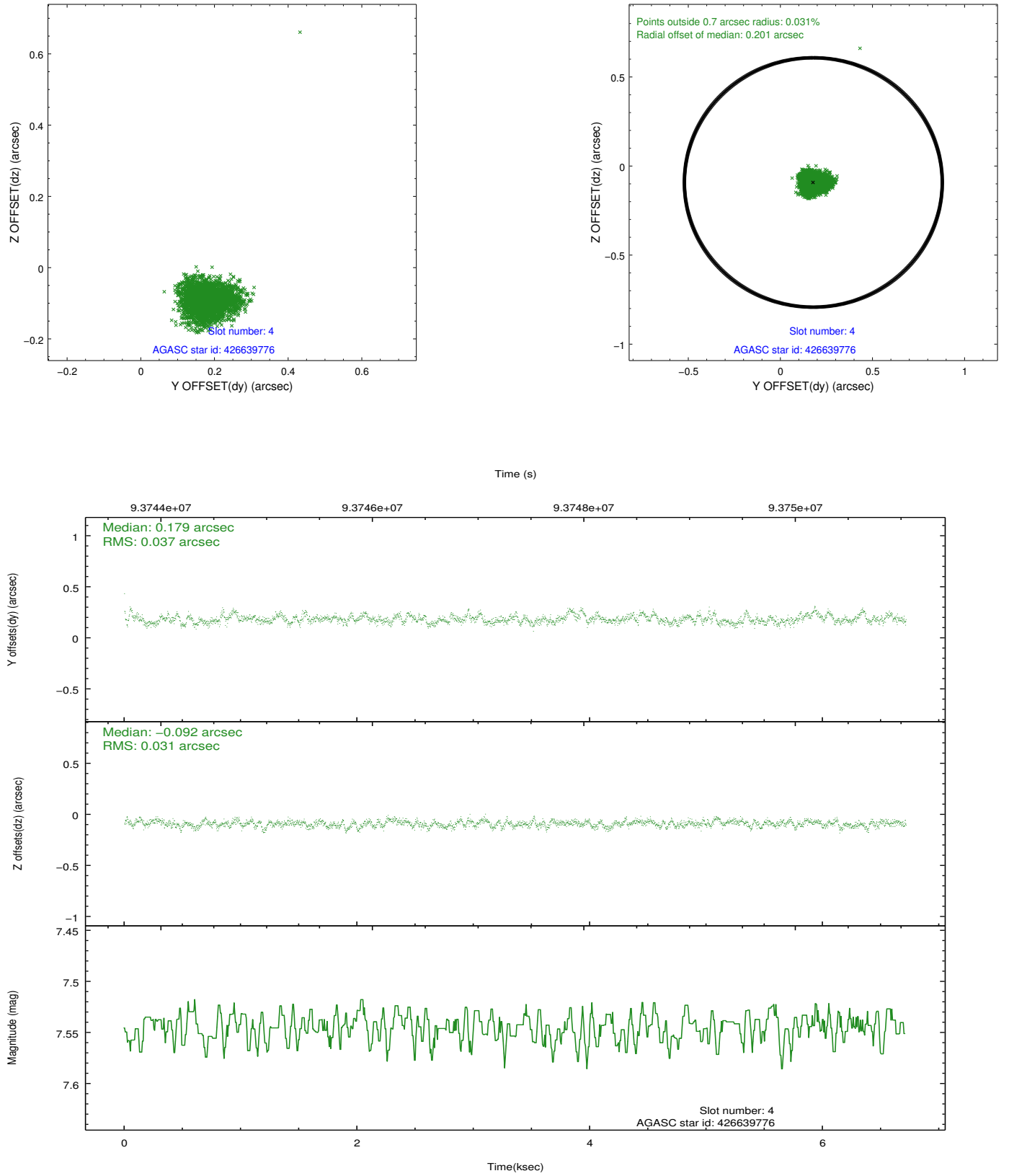
slot	status	id	mag	n_pts	med_dy	med_dz	dr1	dr2	ra	dec	mean_y	mean_z
0	FID	ACIS-S-2	7.11	1639	-0.021	-0.025	0.006	0.011	0.000000	0.000000	-754.83	-1726.95
1	FID	ACIS-S-4	7.21	1639	0.003	0.001	0.007	0.011	0.000000	0.000000	2158.05	180.70
2	FID	ACIS-S-6	7.35	1639	-0.010	0.032	0.008	0.013	0.000000	0.000000	408.24	819.09
3	GUIDE	426639600	6.89	3277	-0.045	0.047	0.049	0.082	3.890460	50.050300	1796.32	1597.31
4	GUIDE	426639776	7.55	3277	0.179	-0.092	0.049	0.082	3.257507	49.926524	1917.40	71.04
5	GUIDE	426524224	7.83	3259	-0.002	0.076	0.046	0.075	2.606943	49.872723	1769.19	-1443.03
6	GUIDE	427168664	8.23	3276	-0.042	-0.066	0.044	0.071	2.975333	50.752354	-1125.59	94.54
7	GUIDE	427040480	8.04	3276	-0.093	0.036	0.055	0.087	2.297284	50.829100	-1746.19	-1344.87

2.4 Star Slots

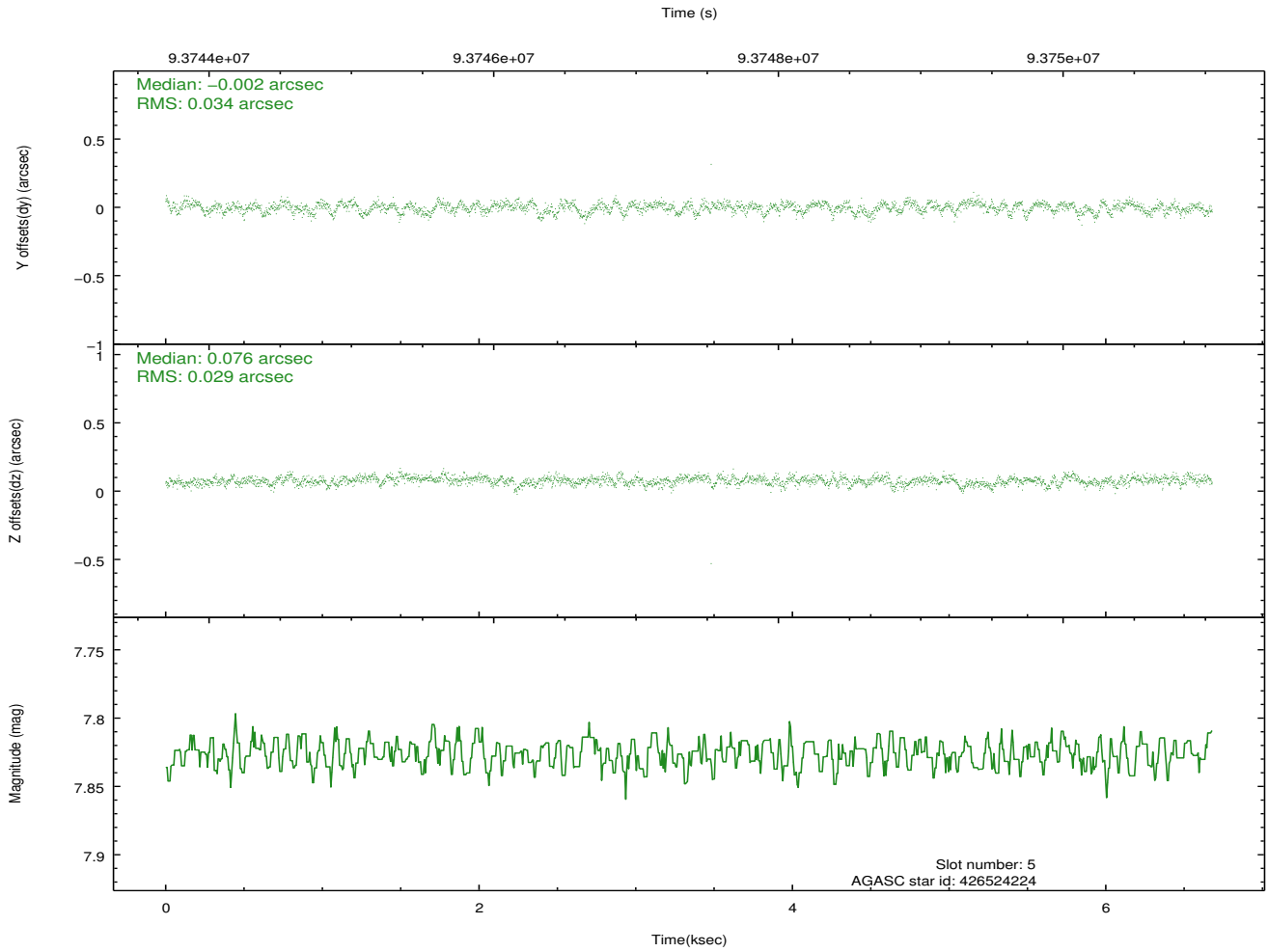
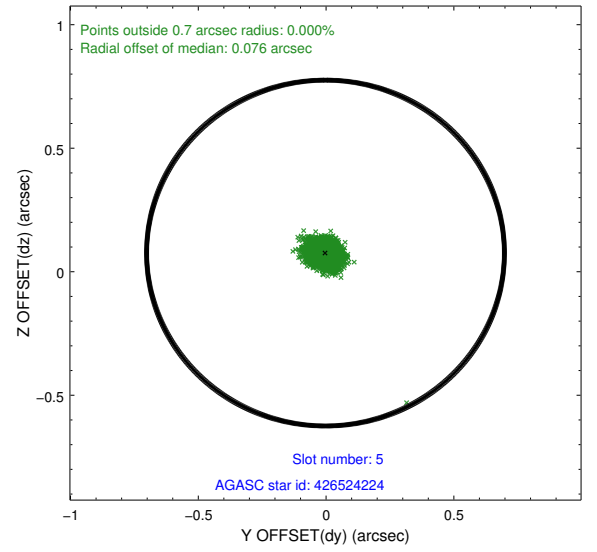
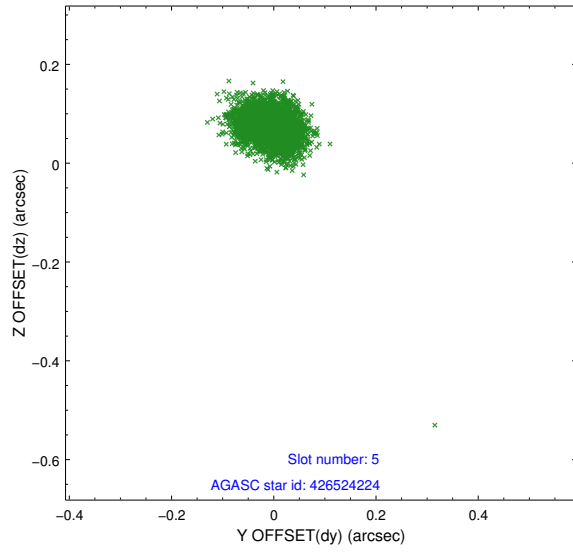
2.4.1 Slot 3



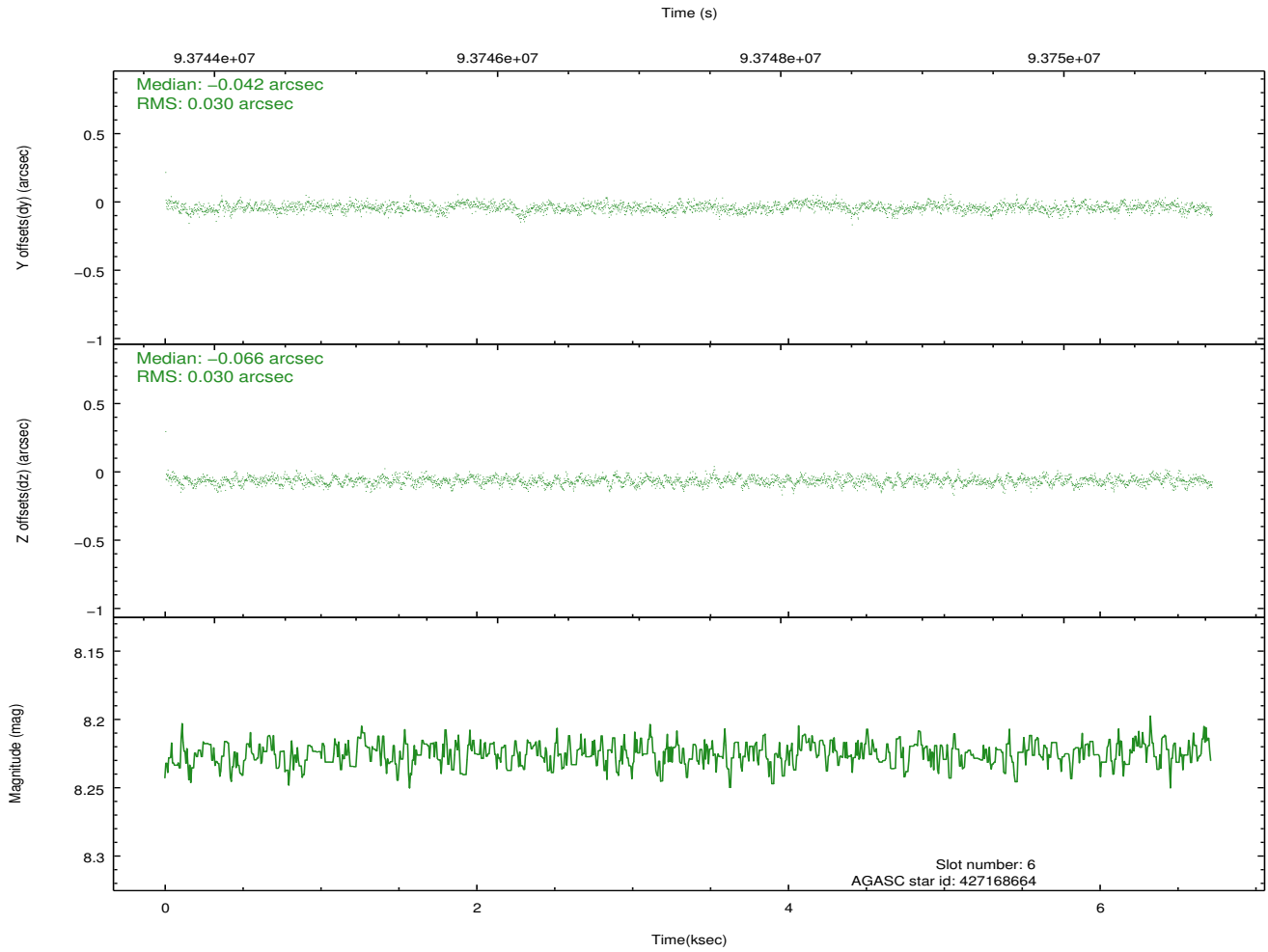
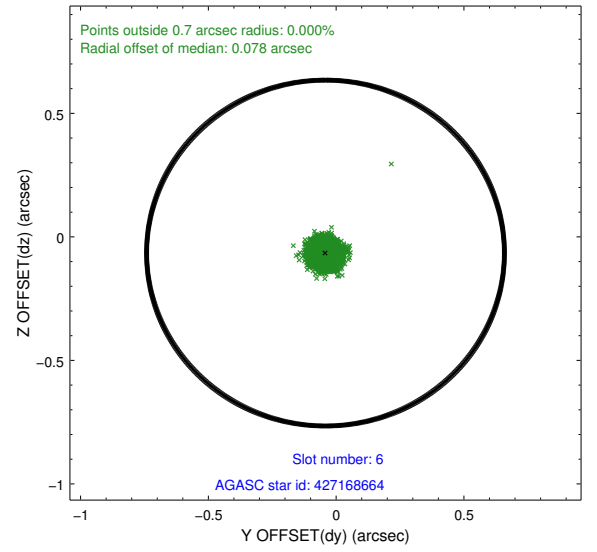
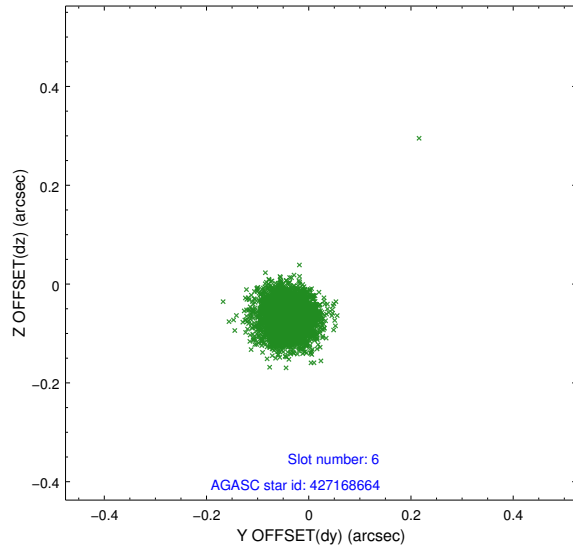
2.4.2 Slot 4



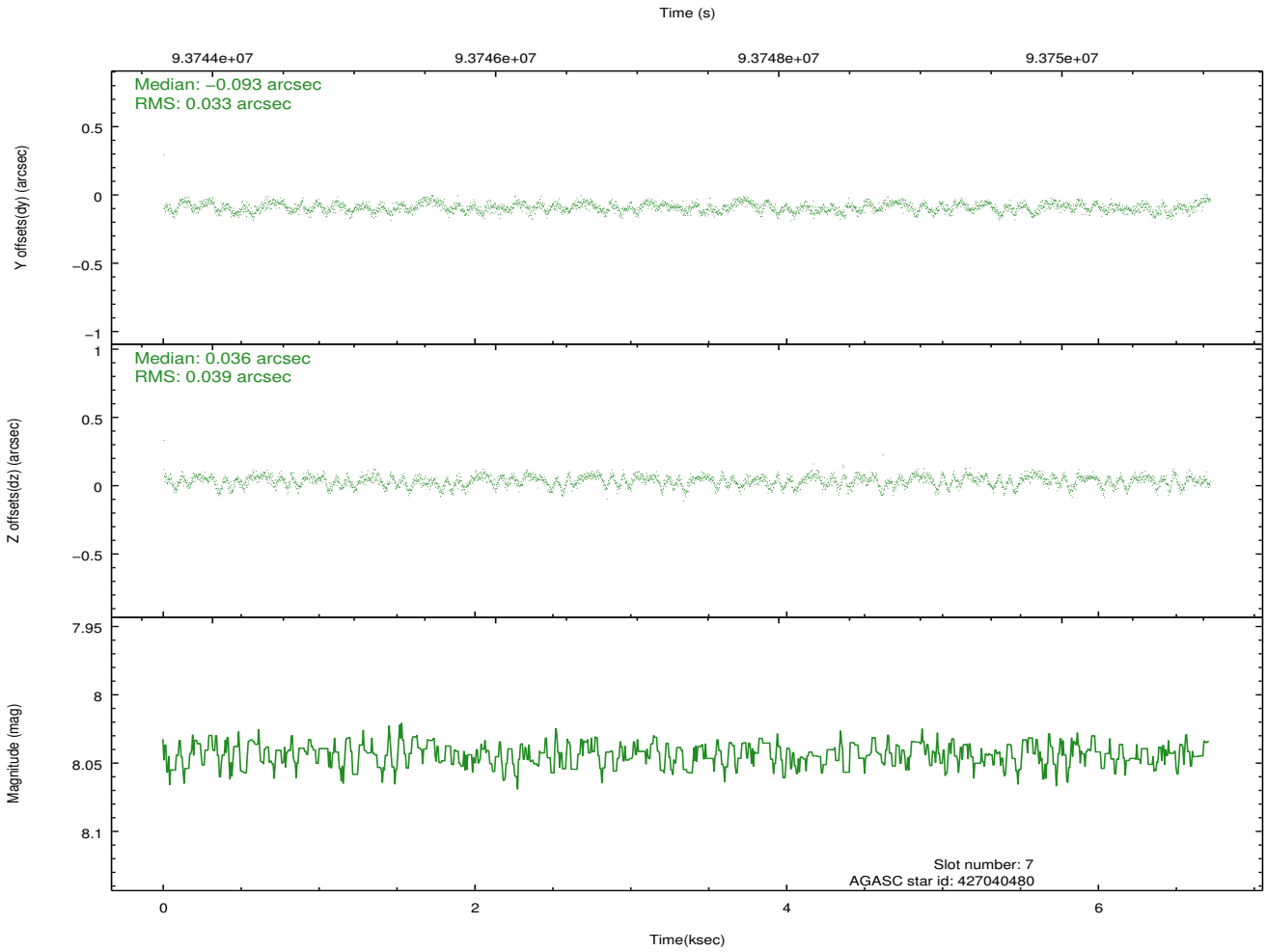
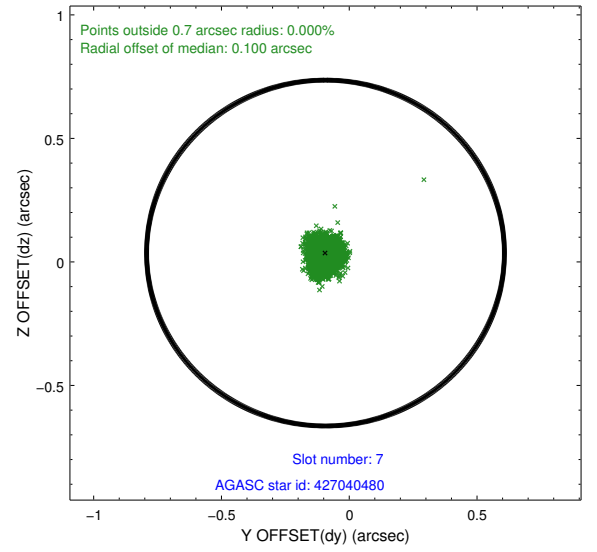
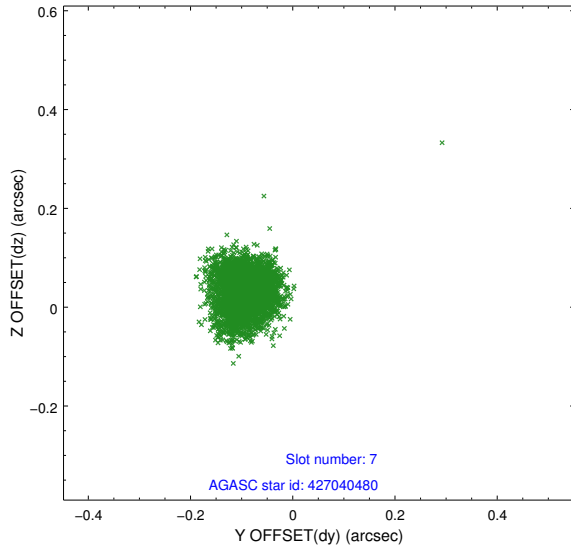
2.4.3 Slot 5



2.4.4 Slot 6

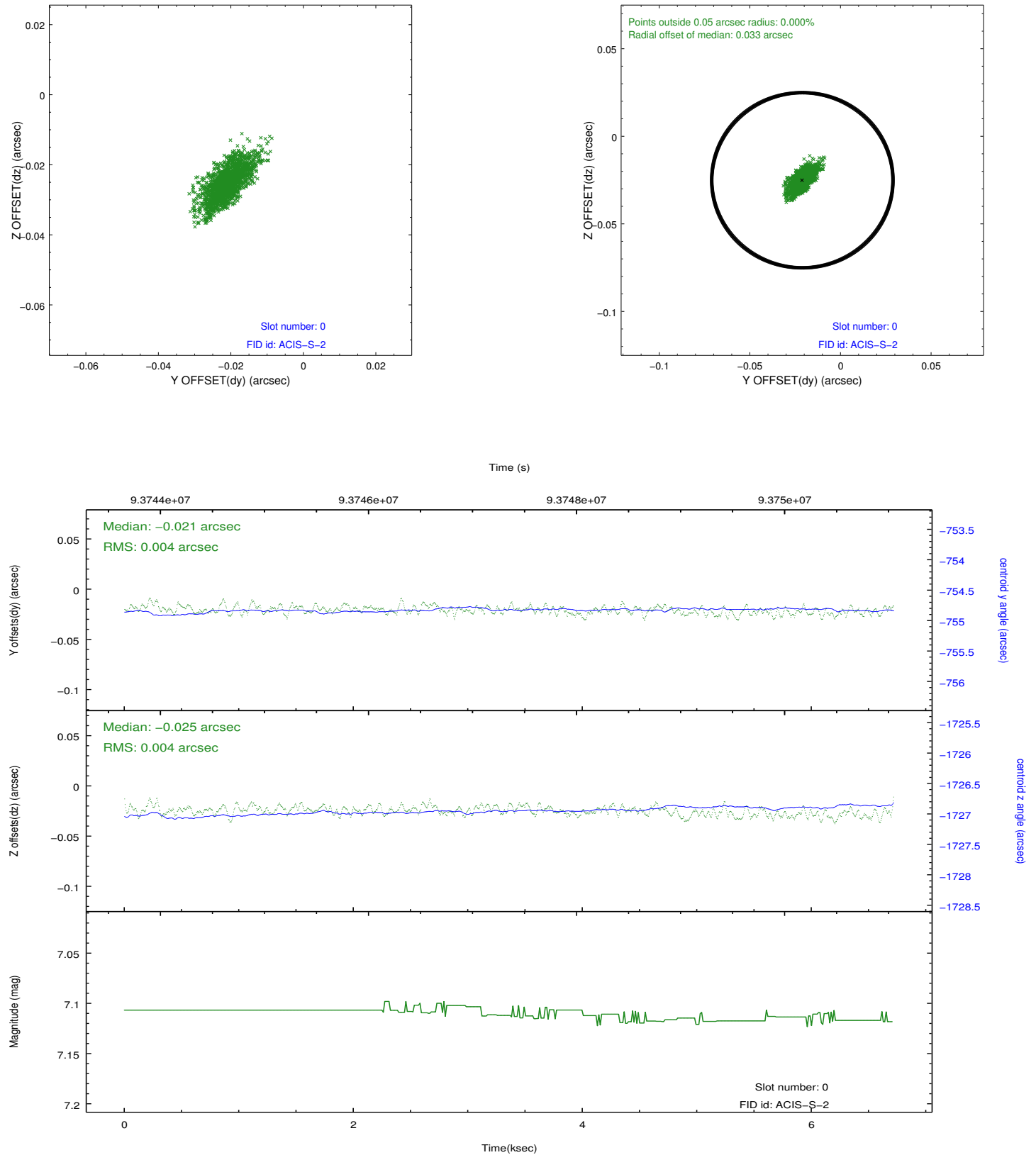


2.4.5 Slot 7

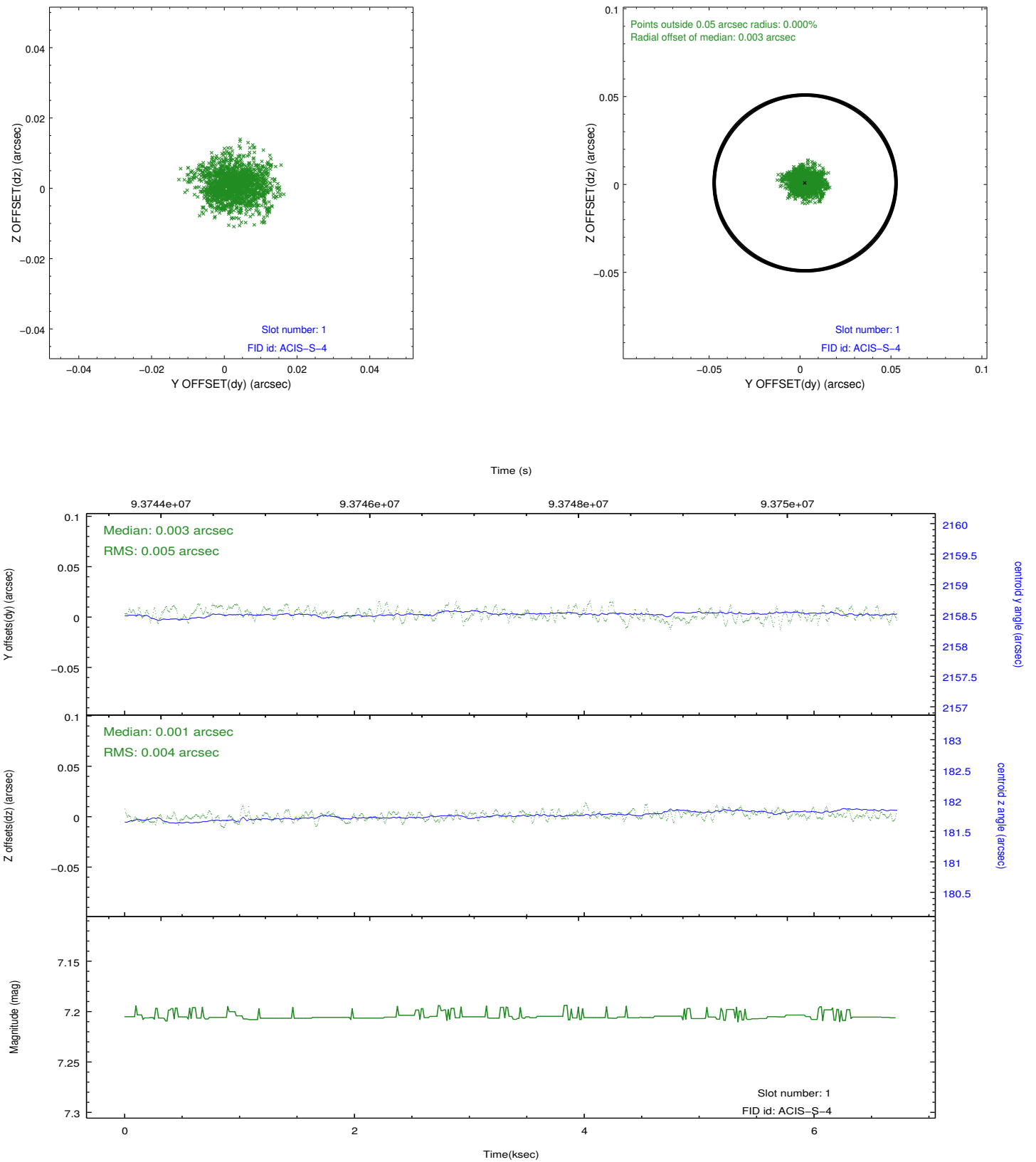


2.5 FID Slots

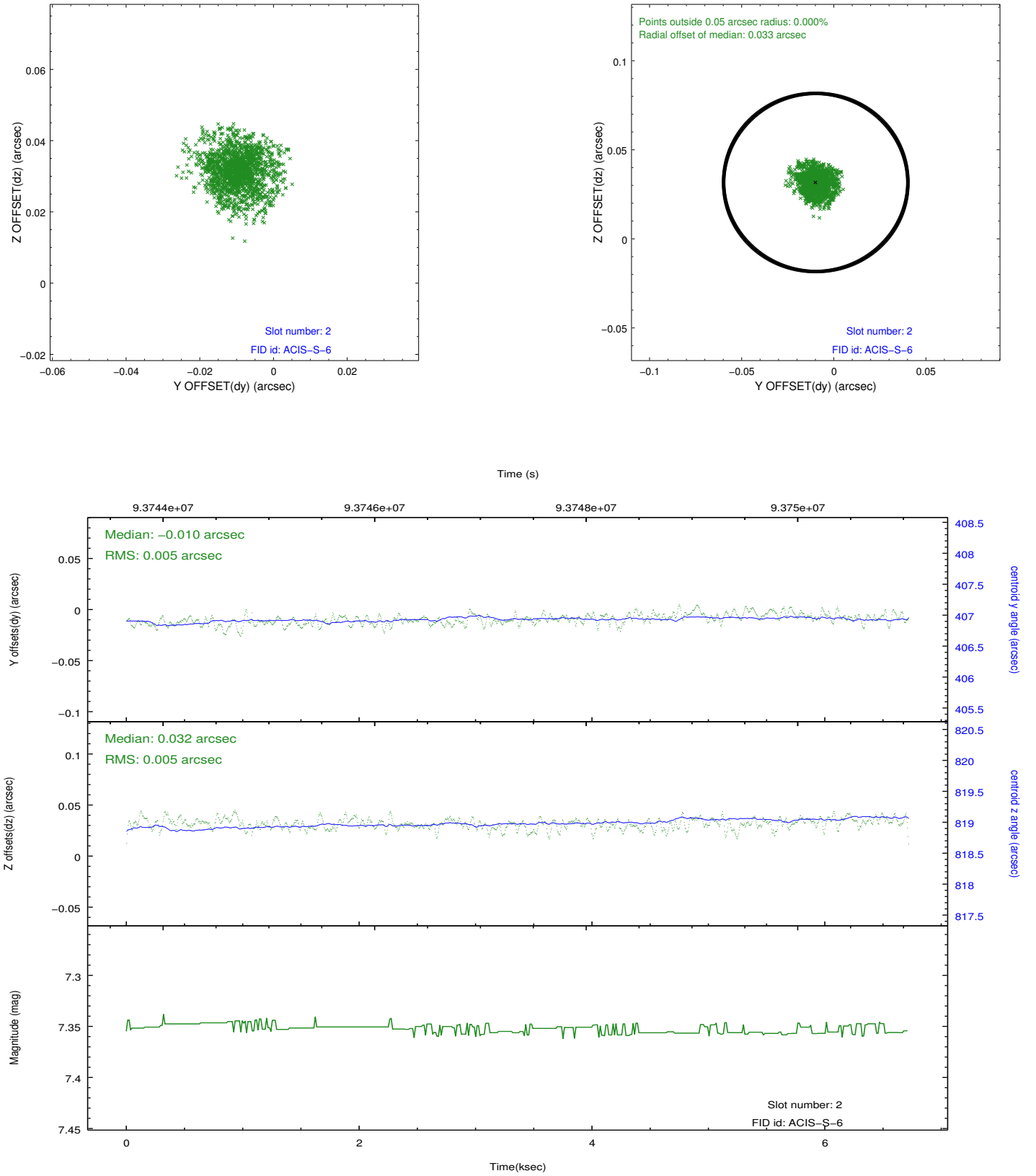
2.5.1 Slot 0



2.5.2 Slot 1



2.5.3 Slot 2



A Summary

A.1 Status

V&V Scientist	Beth Sundheim
V&V Date (YYYY-MM-DD)	2012.09.12
V&V Edition	1
V&V Disposition and Status	OK
V&V Charge Time	5.952

A.2 Comments