

V&V Reference Report

L2 ASCDS Version : 7.6.11.5

Observation 943 - L2 Version 5
Chandra X-Ray Center

L2 Processing Date : Mar 27 2008

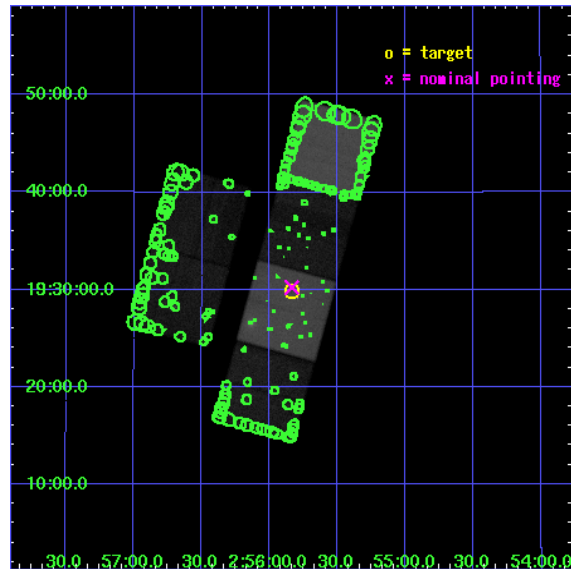
Contents

1	Front	3
2	OBI	4
2.1	OBI	4
2.1.1	Images	4
2.1.2	Bias	4
2.1.3	Parameters	5
2.1.4	Events	5
2.2	Compared Parameters	6
2.3	Aspect	7
2.4	Star Slots	10
2.4.1	Slot 3	10
2.4.2	Slot 4	11
2.4.3	Slot 5	12
2.4.4	Slot 6	13
2.4.5	Slot 7	14
2.5	FID Slots	15
2.5.1	Slot 0	15
2.5.2	Slot 1	16
2.5.3	Slot 2	17
3	OBI	18
3.1	OBI	18
3.1.1	Images	18
3.1.2	Bias	18
3.1.3	Parameters	19
3.1.4	Events	19
3.2	Compared Parameters	20
3.3	Aspect	21
3.4	Star Slots	24
3.4.1	Slot 3	24
3.4.2	Slot 4	25
3.4.3	Slot 5	26
3.4.4	Slot 6	27

3.4.5	Slot 7	28
3.5	FID Slots	29
3.5.1	Slot 0	29
3.5.2	Slot 1	30
3.5.3	Slot 2	31
4	Point Sources	32
A	Summary	33
A.1	Status	33
A.2	Comments	33

1 Front

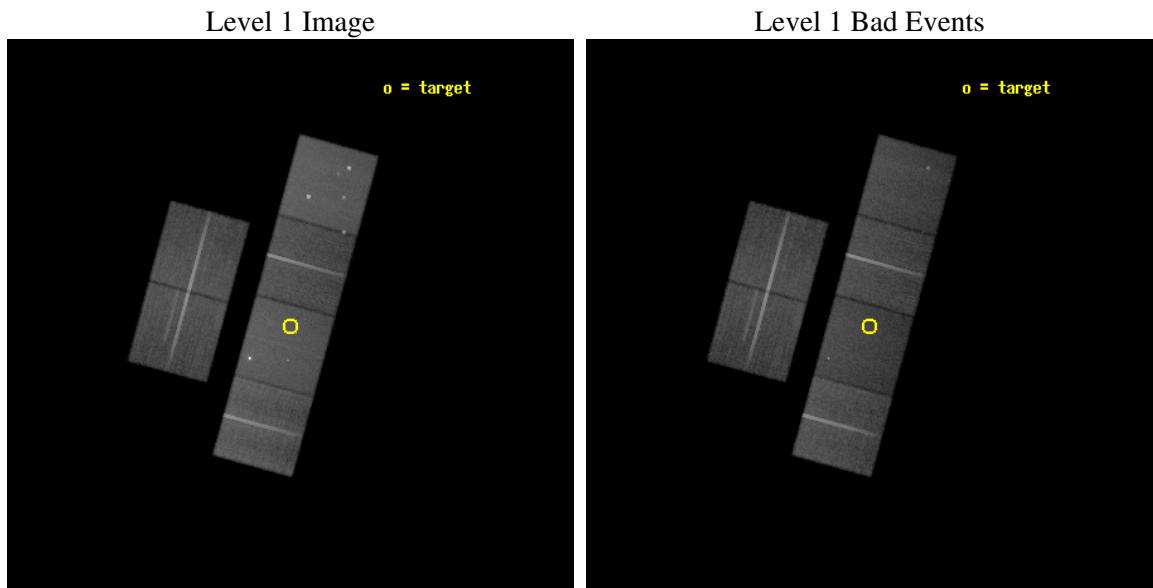
seq_num	900015
obs_id	943
title	MEASURING THE AGE OF THE LOCAL BUBBLE BY OBSERVING O VII AND O VIII EMISSION TOWARDS MBM 12
observer	DR. RANDALL SMITH
object	MBM 12
dtcycle	0
cycle	P
ra_targ	43.958167
dec_targ	19.498578
ra_nom	43.95919
dec_nom	19.504006
roll_nom	105.314347
revision	5
ontime	98777.313240752
livetime	97526.53542394
ontime2	98774.072280526
ontime3	98774.072190791
ontime5	98764.349190474
ontime6	98774.07220076
ontime7	98777.313240752
ontime8	98774.072410136
l2events	1011117



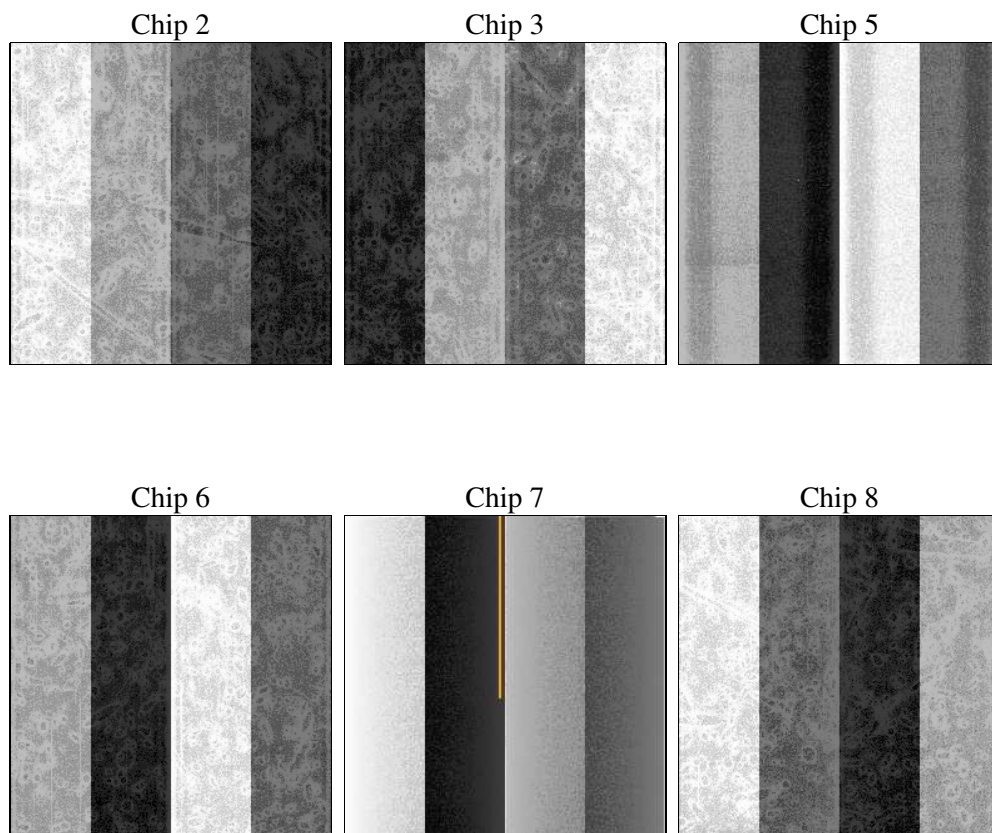
2 OBI

2.1 OBI

2.1.1 Images



2.1.2 Bias



2.1.3 Parameters

obi_num	0
ascdsver	7.6.10
caldsver	3.4.0
date	2007-06-29T21:10:49
revision	3

sched_exp_time	43000.000000
ontime	42732.800039798
ontime2	42732.800039798
ontime3	42732.800039798
ontime5	42732.800039798
ontime6	42732.800039798
ontime7	42732.800039798
ontime8	42726.318248942
l1events	1972087

2.1.4 Events

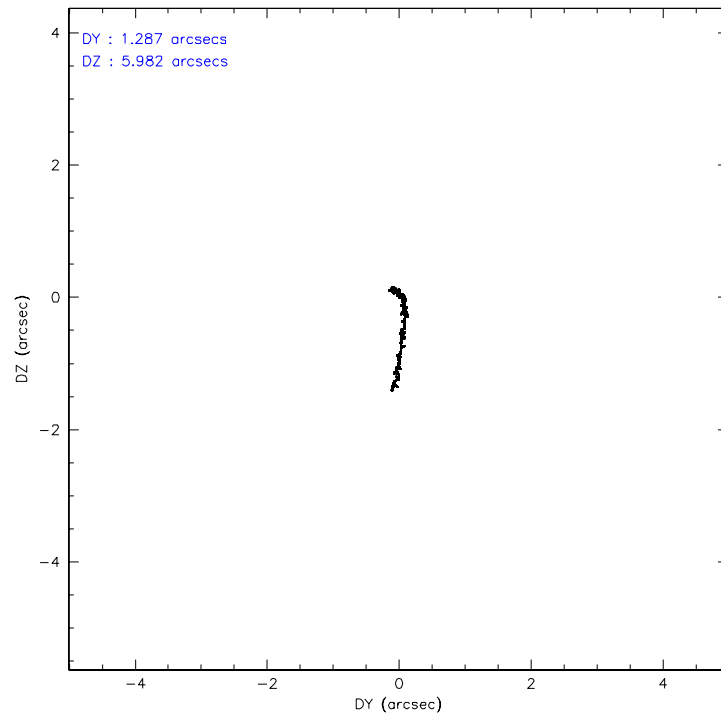
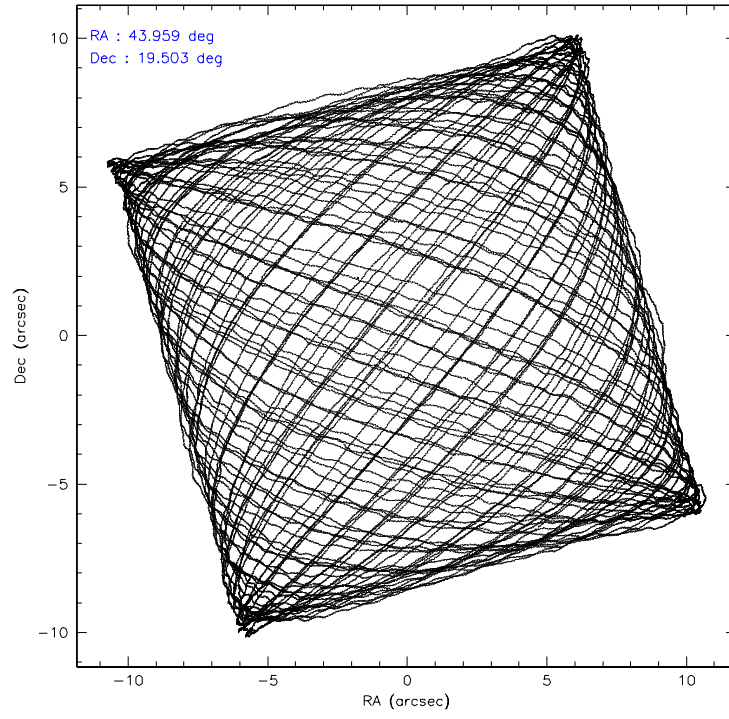
	ccd 2	ccd 3	ccd 5	ccd 6	ccd 7	ccd 8
level 1 events	293340	282986	383789	286018	365887	360067
rejected events	260649	249452	198261	250651	193485	284713
rejected %	88%	88%	51%	87%	52%	79%

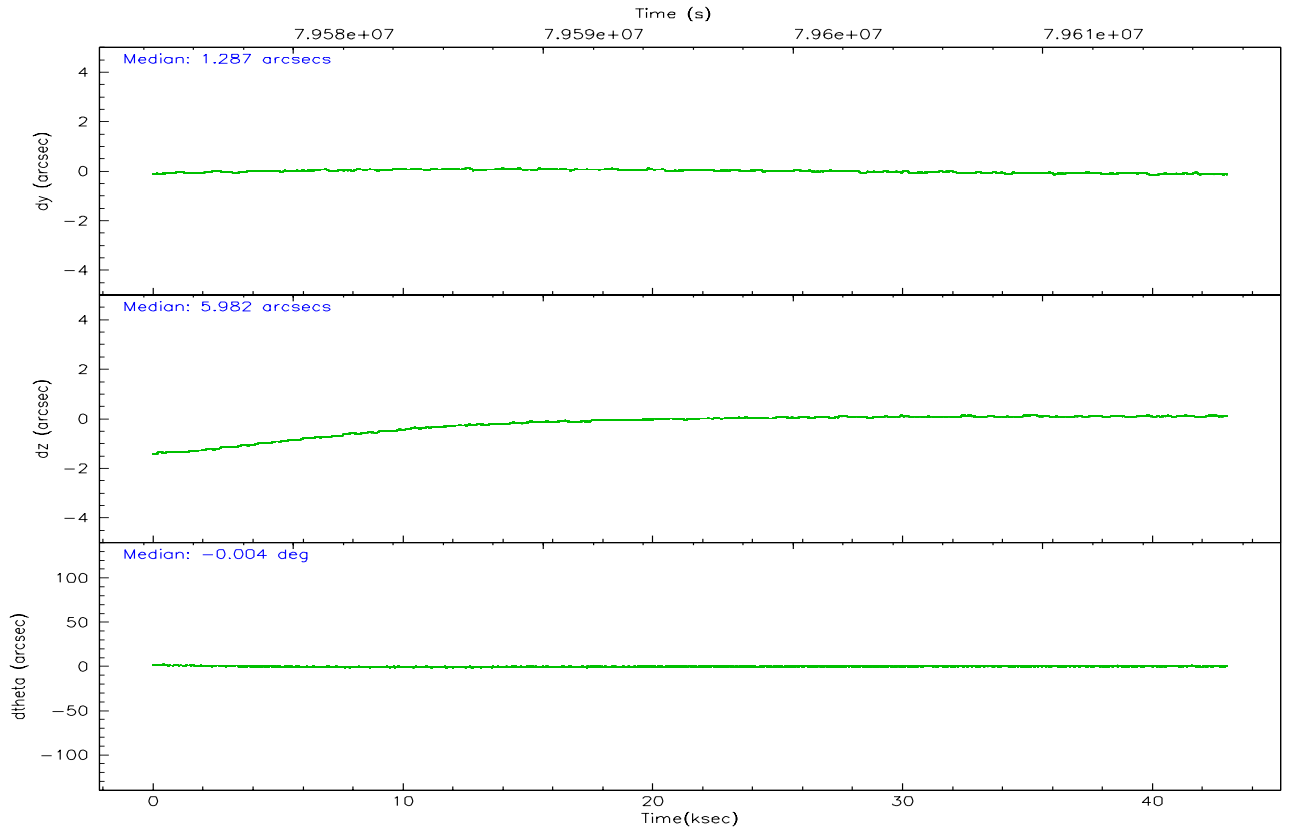
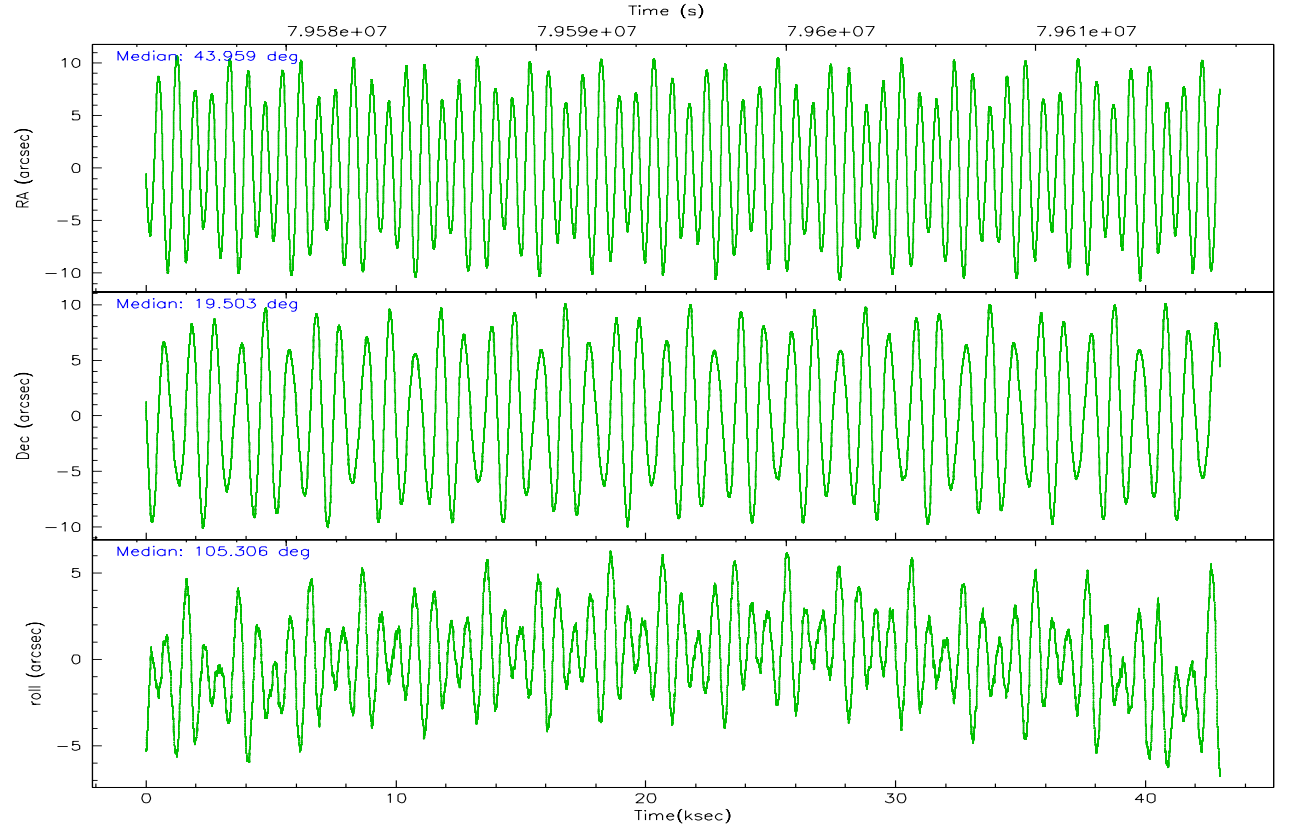
	ccd 2	ccd 3	ccd 5	ccd 6	ccd 7	ccd 8
grade 0 events	13914	14954	27491	15384	19031	26121
	4%	5%	7%	5%	5%	7%
grade 1 events	124	121	1234	136	464	258
	0%	0%	0%	0%	0%	0%
grade 2 events	7228	7022	51128	7454	34643	15938
	2%	2%	13%	2%	9%	4%
grade 3 events	2871	2874	8270	3278	16094	8144
	0%	1%	2%	1%	4%	2%
grade 4 events	2975	3042	8033	3080	15828	7420
	1%	1%	2%	1%	4%	2%
grade 5 events	8837	9729	28334	10723	32681	13262
	3%	3%	7%	3%	8%	3%
grade 6 events	5726	5657	90705	6192	86908	17740
	1%	1%	23%	2%	23%	4%
grade 7 events	251665	239587	168594	239771	160238	271184
	85%	84%	43%	83%	43%	75%

2.2 Compared Parameters

Parameter	Planned	Actual	Parameter	Planned	Actual
Instrument	ACIS	ACIS	Obspar format version number	6	6
Detector	ACIS-235678	ACIS-235678	Obspar file type	PREDICTED	ACTUAL
Grating	NONE	NONE	Obspar update status	OVERRIDE	OVERRIDE
Data mode	FAINT	FAINT	On-chip summing requested	N	N
Observation mode	POINTING	POINTING	Subarray requested	NONE	NONE
Pointing RA	43.958167	43.95880904392774	Alternating exposures requested	N	N
Pointing Dec	19.498578	19.50319083090074	Primary exposure time	3.200000	3.200000
Pointing Roll	105.150919	105.3144714297937			
SIM focus pos (mm)	-0.684267	-0.684267			
SIM defocus (mm)	0	0			
SIM translation stage pos (mm)	-190.132523	-190.132523			
SIM translation stage offset (mm)	0	0			
Observation start time	79574380.184000	79574380.184			
Observation start date	2000-07-09T23:58:36	2000-07-09T23:59:40			
Observation end time	79617380.184000	79617380.184			
Observation end date	2000-07-10T11:55:16	2000-07-10T11:56:20			
Read mode	TIMED	TIMED			

2.3 Aspect



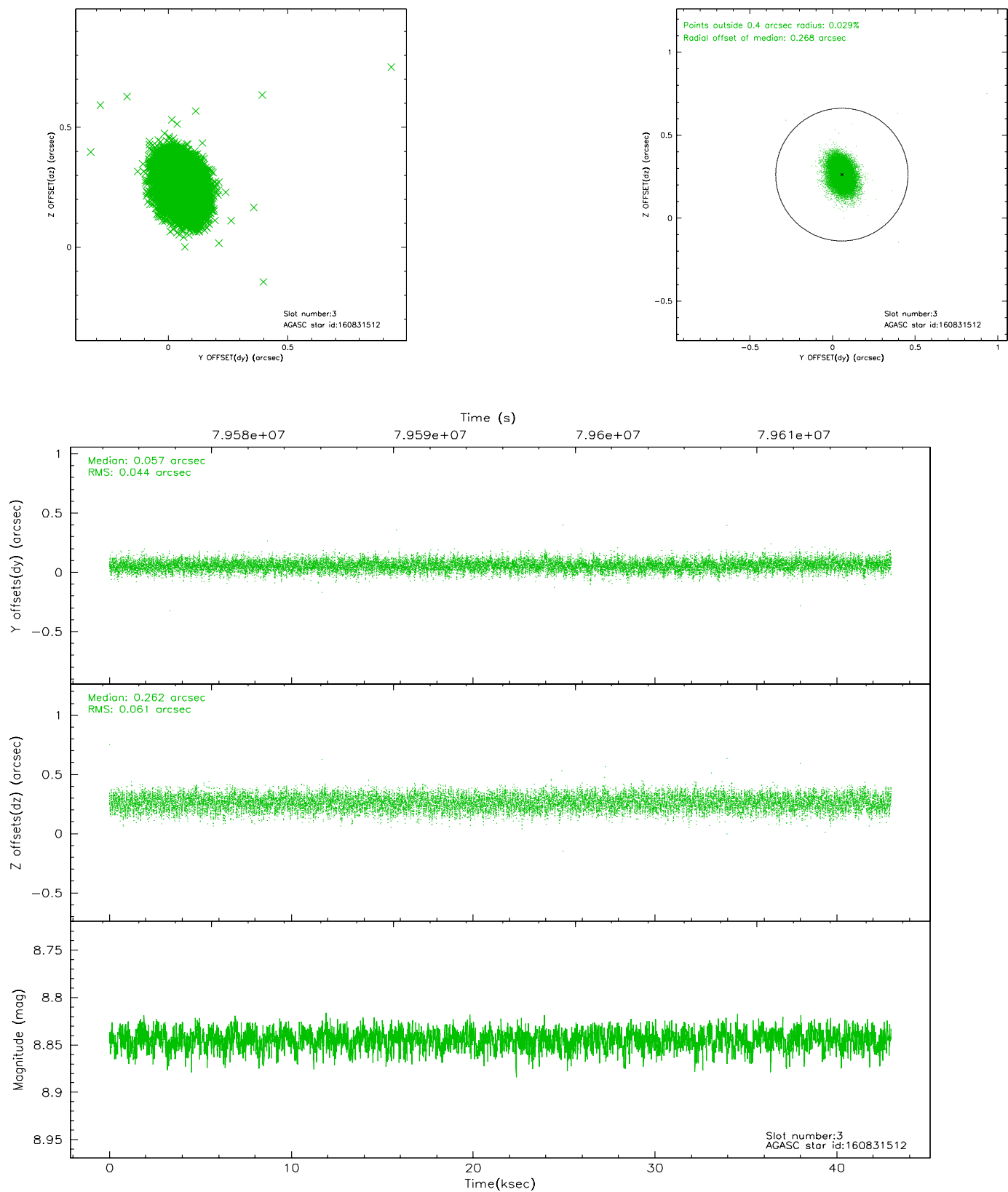


Slot Statistics

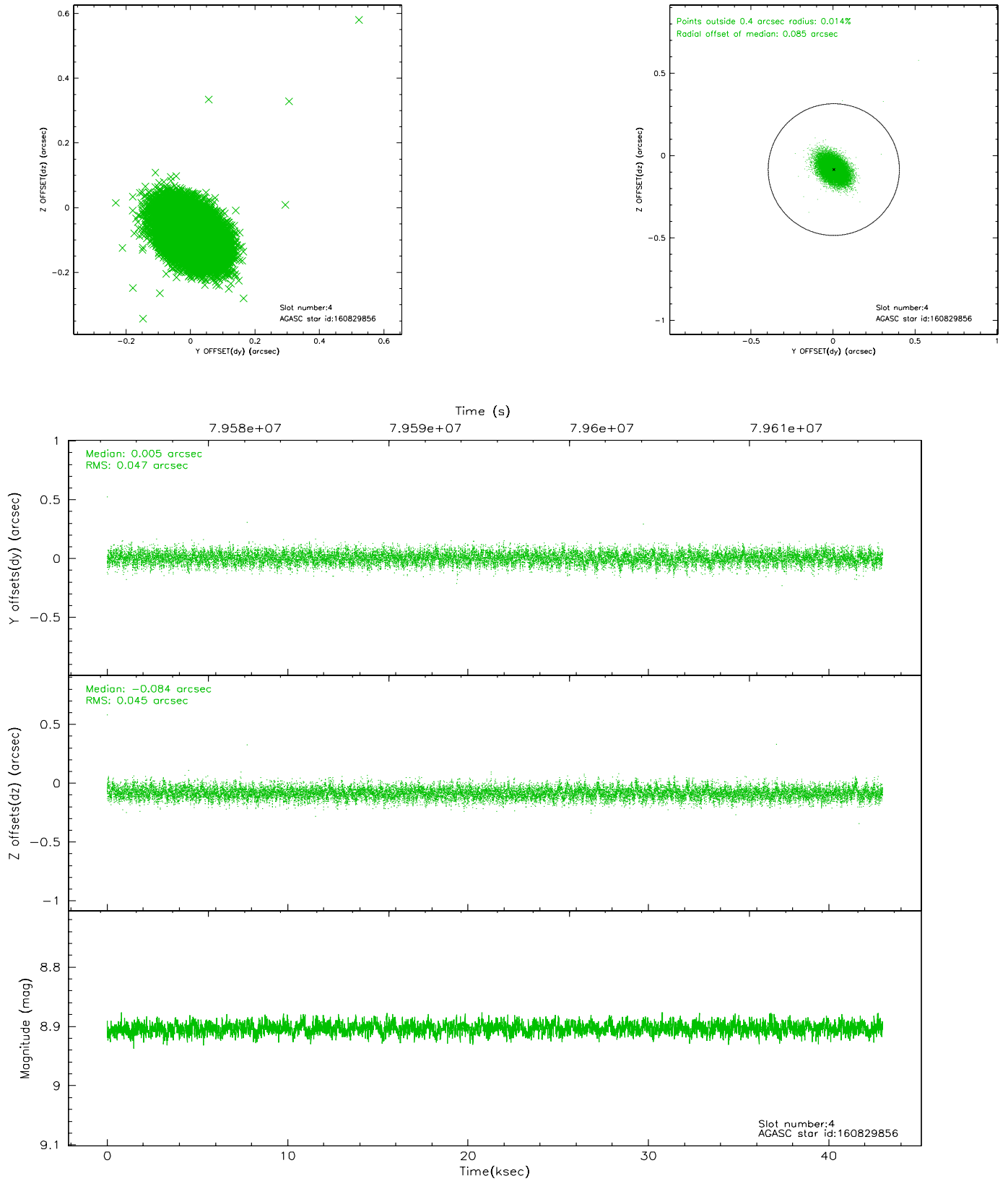
slot	status	id	mag	n_pts	med_dy	med_dz	dr1	dr2	ra	dec	mean_y	mean_z
0	FID	ACIS-S-2	7.11	10486	-0.024	0.031	0.008	0.014	0.000000	0.000000	-753.89	-1726.87
1	FID	ACIS-S-4	7.21	10486	-0.059	0.004	0.007	0.014	0.000000	0.000000	2159.34	181.59
2	FID	ACIS-S-5	7.23	10488	0.052	-0.026	0.007	0.019	0.000000	0.000000	-1806.66	175.22
3	GUIDE	160831512	8.84	20973	0.057	0.262	0.080	0.129	44.599048	19.229287	-1430.96	-1792.98
4	GUIDE	160829856	8.90	20969	0.005	-0.084	0.068	0.115	43.658777	19.344007	-200.33	1183.88
5	GUIDE	160832408	9.16	20962	0.183	-0.078	0.077	0.128	43.956092	19.153477	-1126.94	388.72
6	GUIDE	160830024	9.50	20966	-0.087	-0.346	0.107	0.171	43.276963	19.335140	111.32	2443.07
7	GUIDE	161223880	9.95	20881	-0.161	0.249	0.134	0.228	44.390586	20.017714	1493.56	-1843.24

2.4 Star Slots

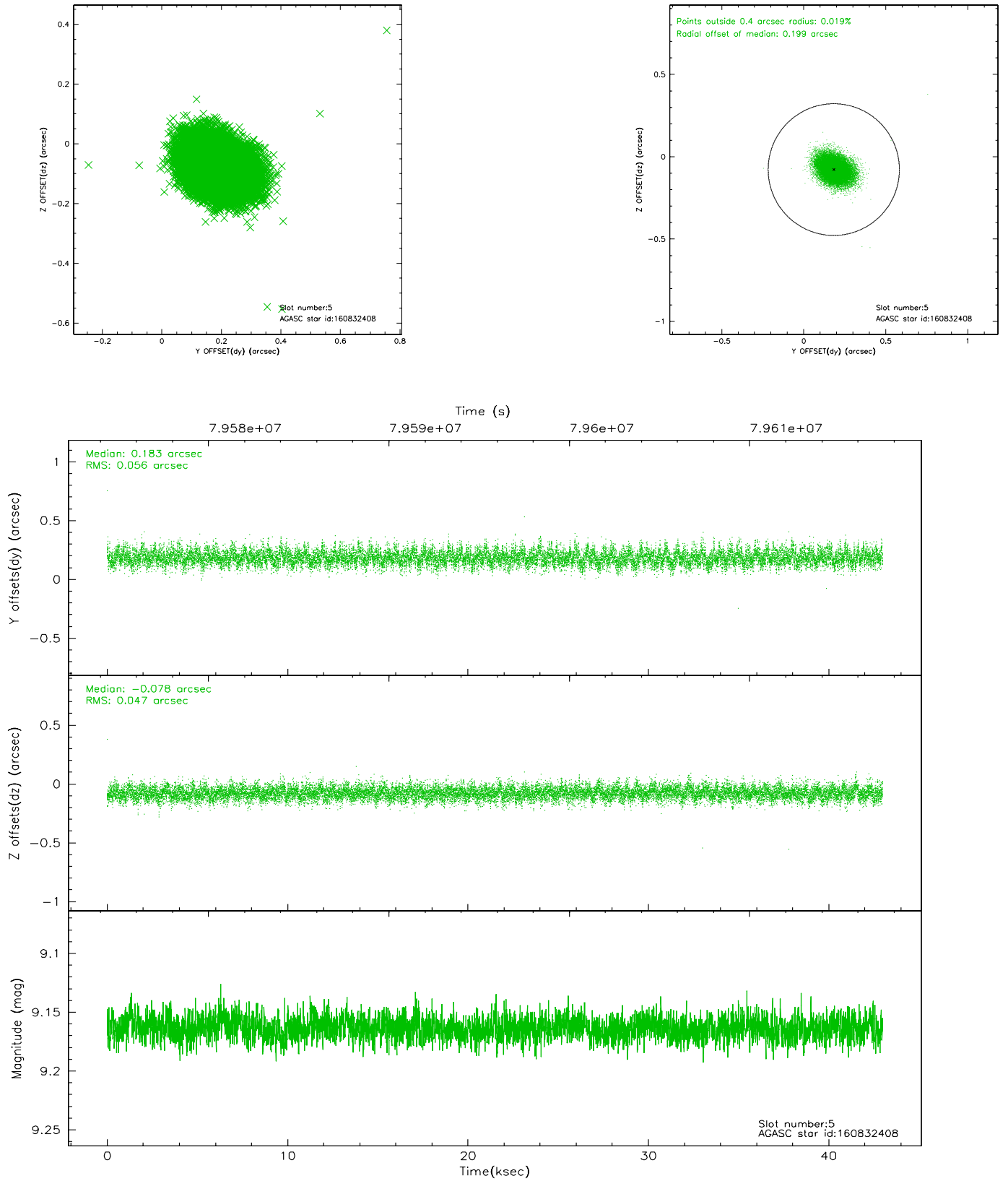
2.4.1 Slot 3



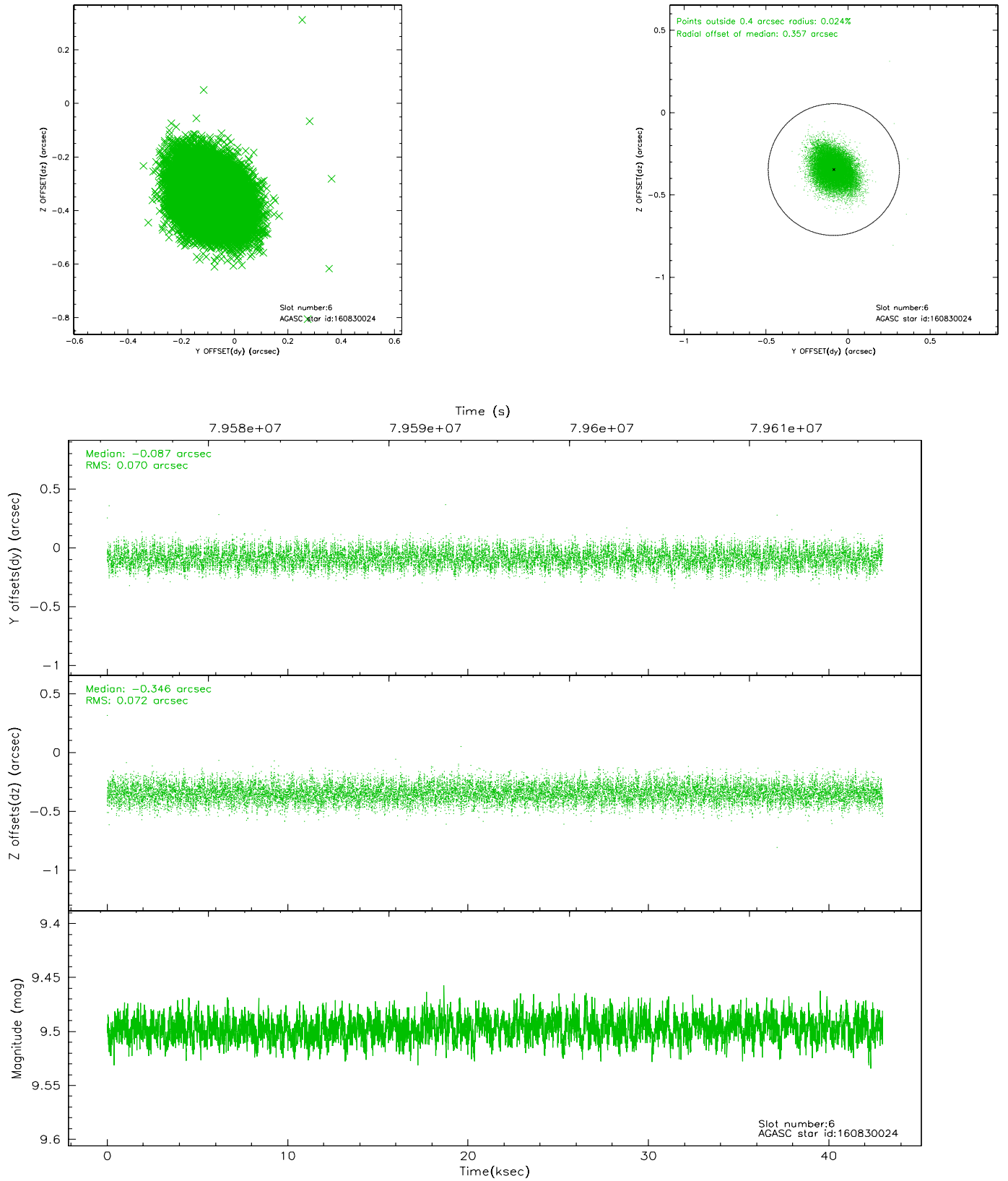
2.4.2 Slot 4



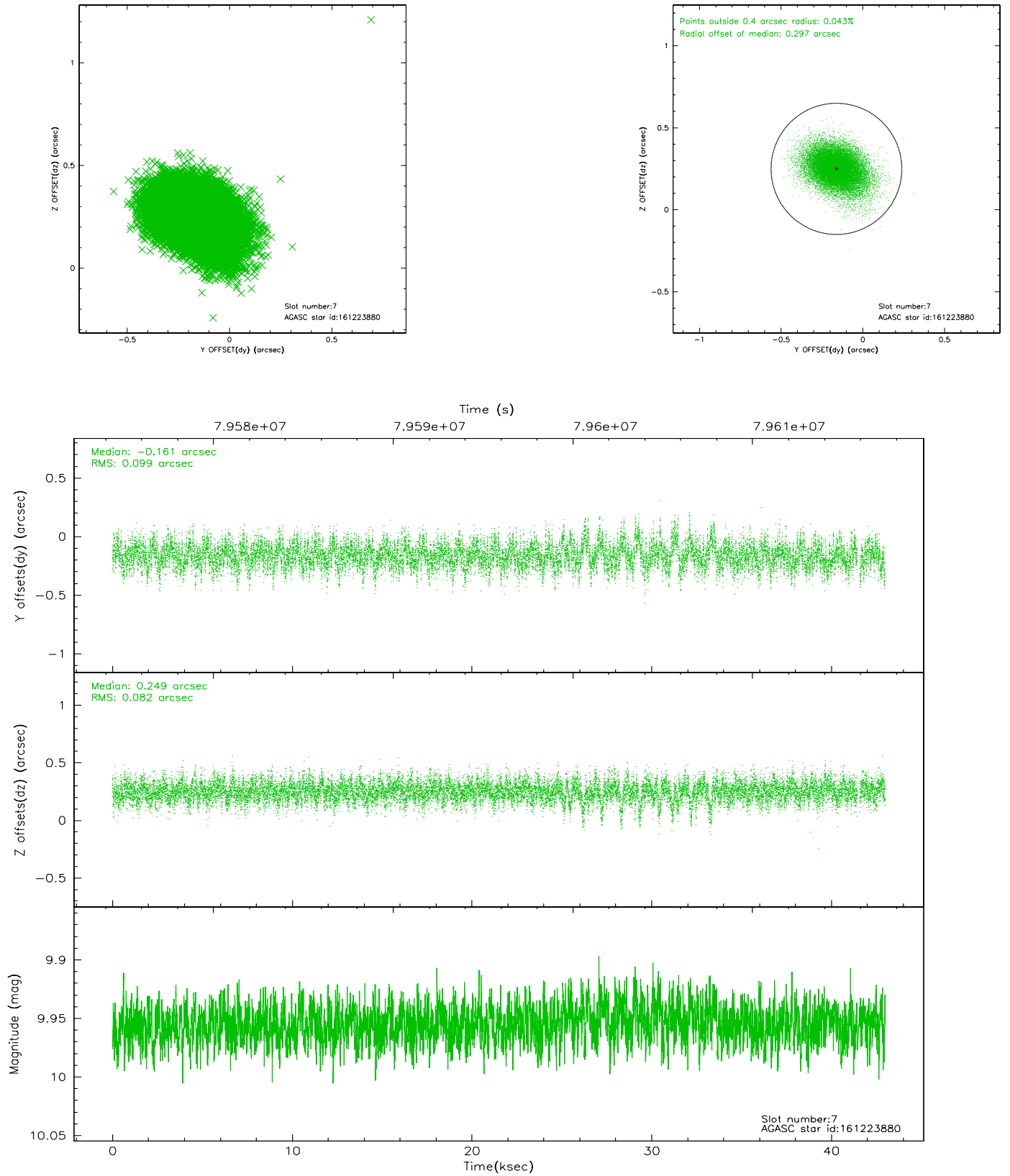
2.4.3 Slot 5



2.4.4 Slot 6

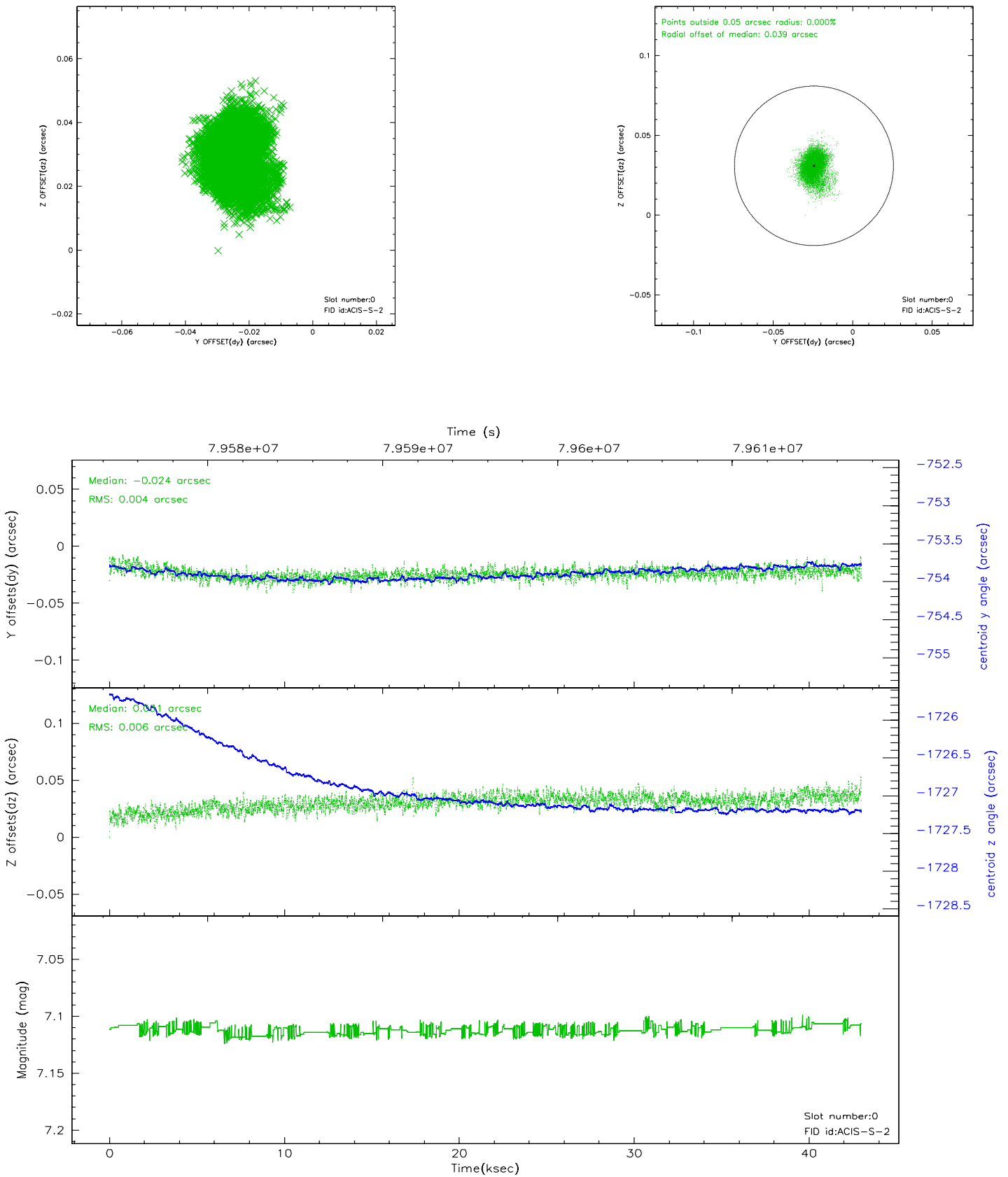


2.4.5 Slot 7

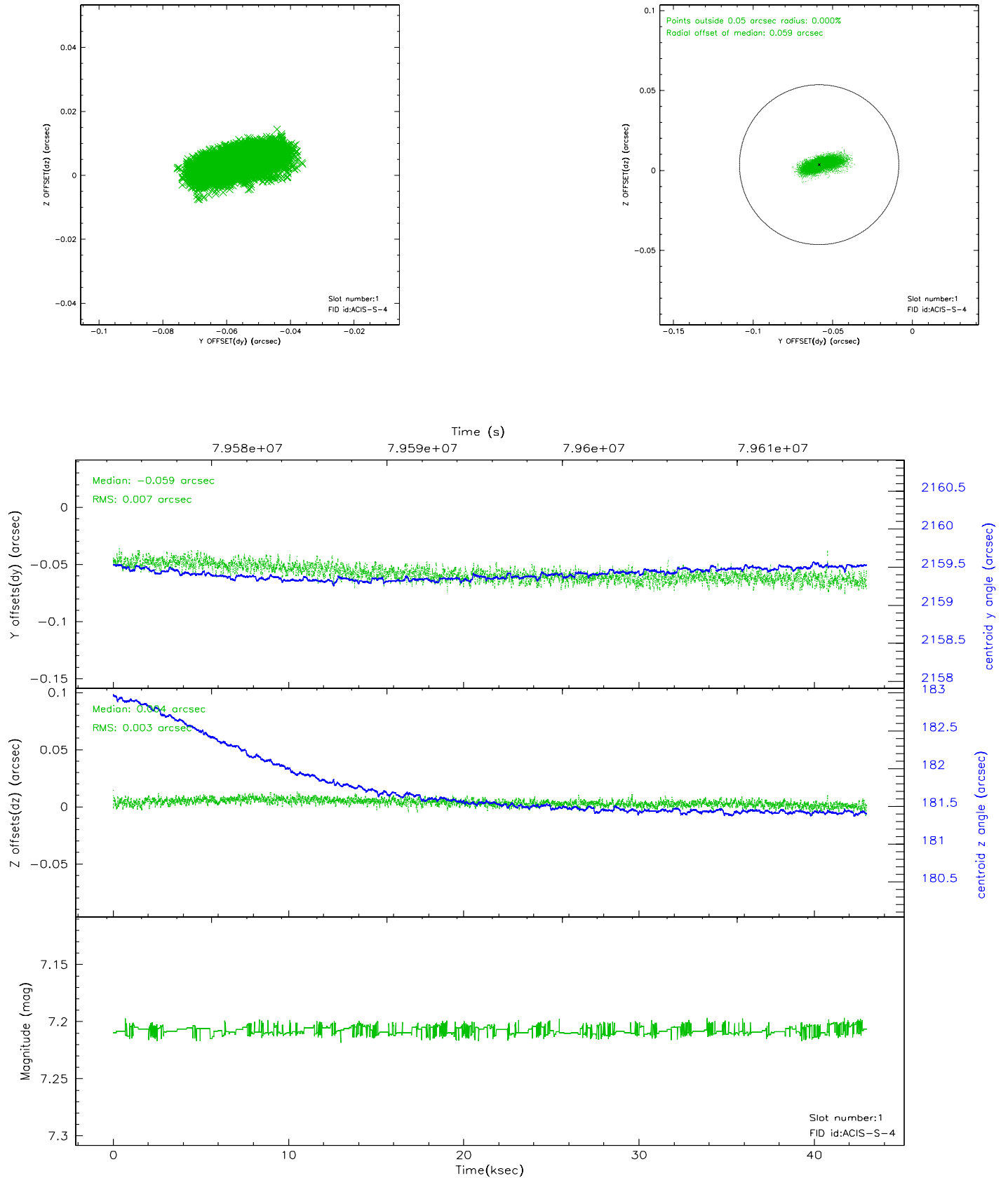


2.5 FID Slots

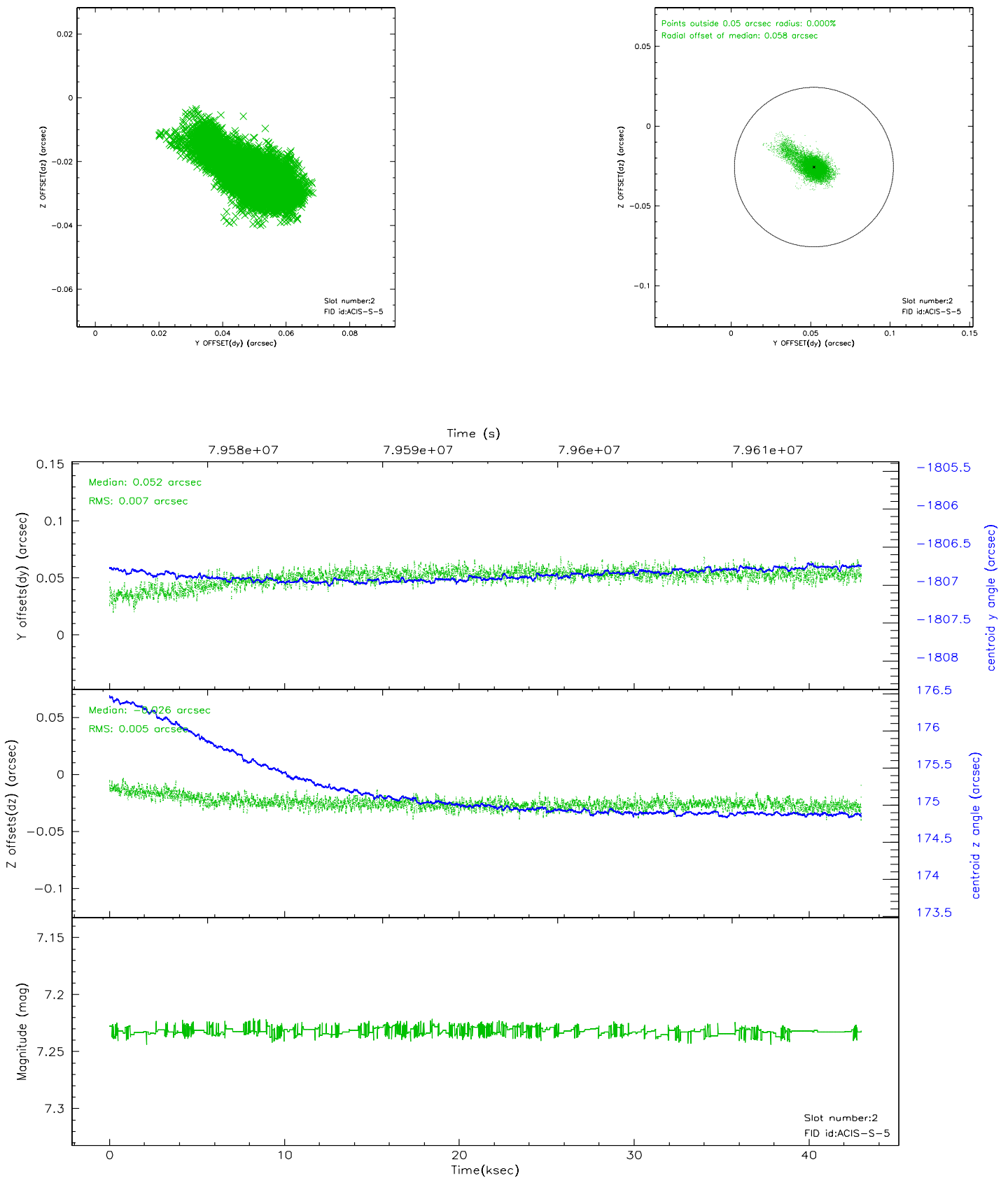
2.5.1 Slot 0



2.5.2 Slot 1



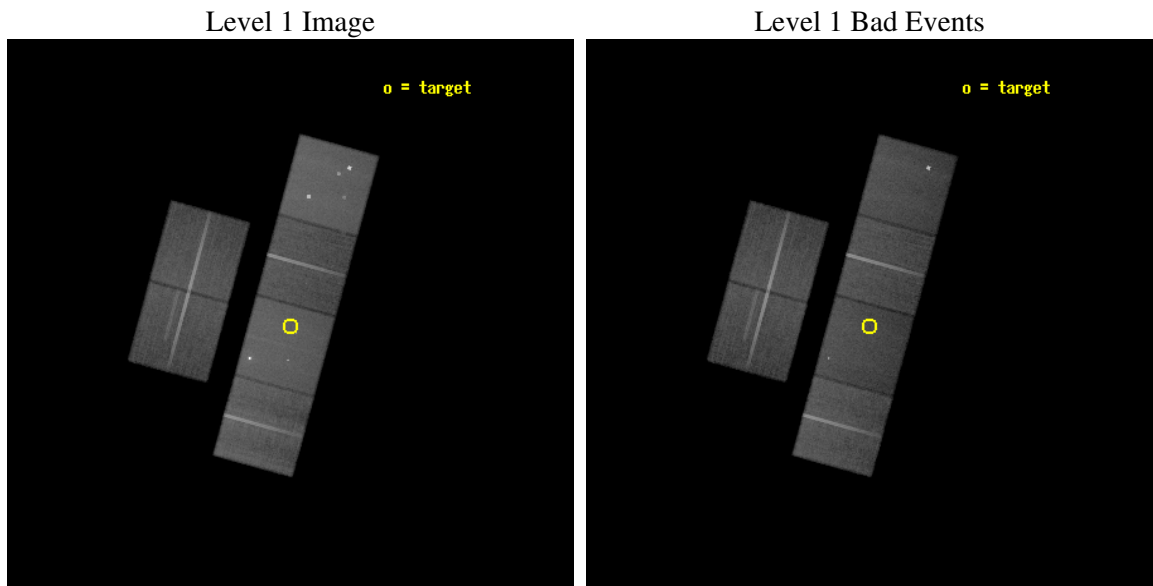
2.5.3 Slot 2



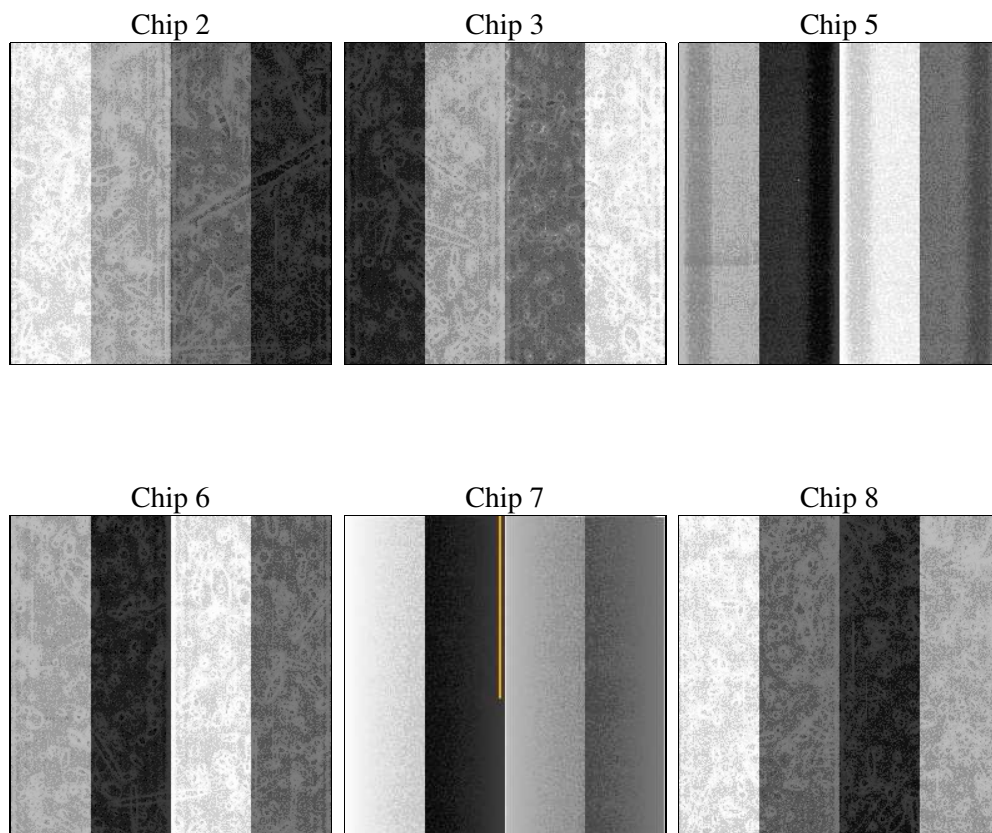
3 OBI

3.1 OBI

3.1.1 Images



3.1.2 Bias



3.1.3 Parameters

obi_num	1
ascdsver	7.6.11.5
caldsver	3.4.2
date	2008-03-26T23:21:49
revision	4

sched_exp_time	56398.966000
ontime	56044.513200954
ontime2	56041.272240728
ontime3	56041.272150993
ontime5	56031.549150676
ontime6	56041.272160962
ontime7	56044.513200954
ontime8	56047.754161194
l1events	2306423

3.1.4 Events

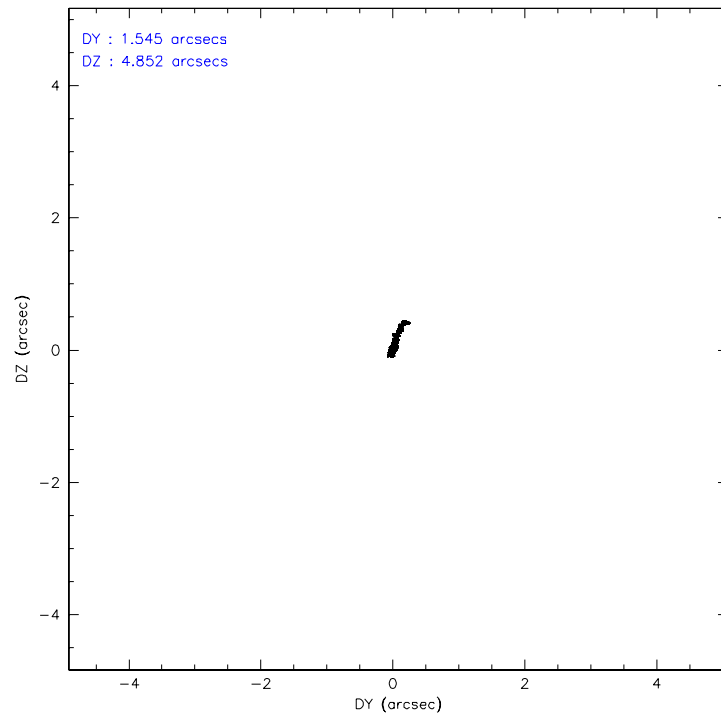
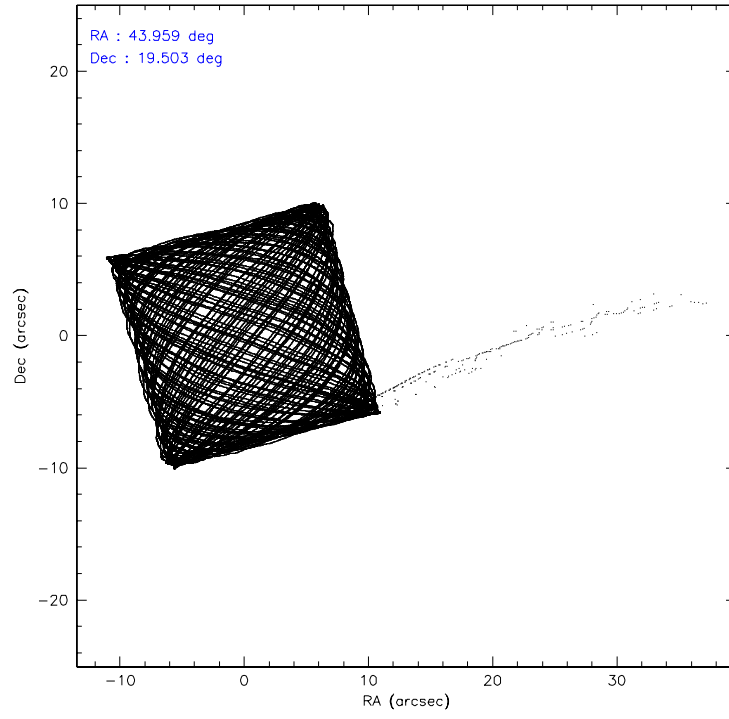
	ccd 2	ccd 3	ccd 5	ccd 6	ccd 7	ccd 8
level 1 events	329151	312314	483326	326119	449188	406325
rejected events	293744	276266	246153	288661	231759	323446
rejected %	89%	88%	50%	88%	51%	79%

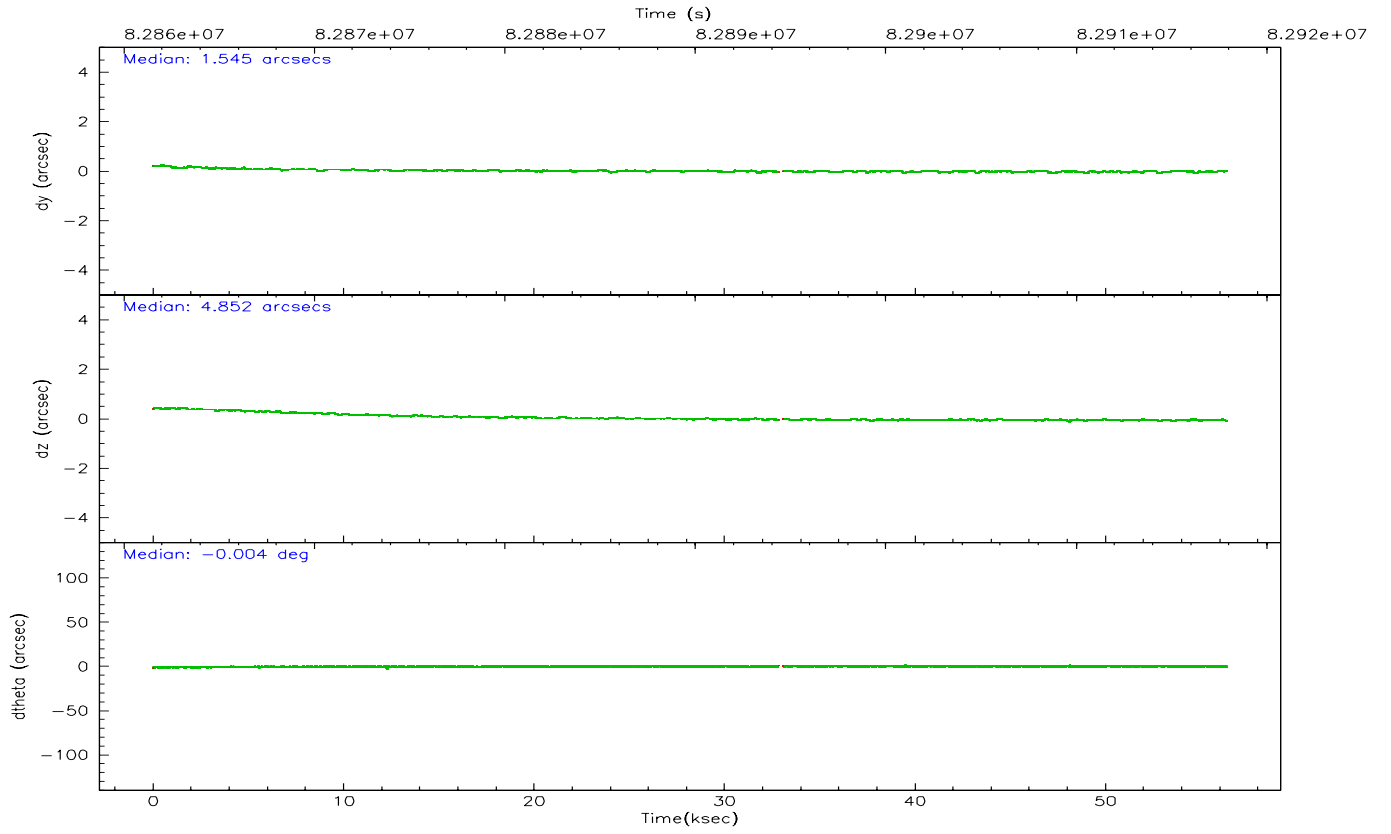
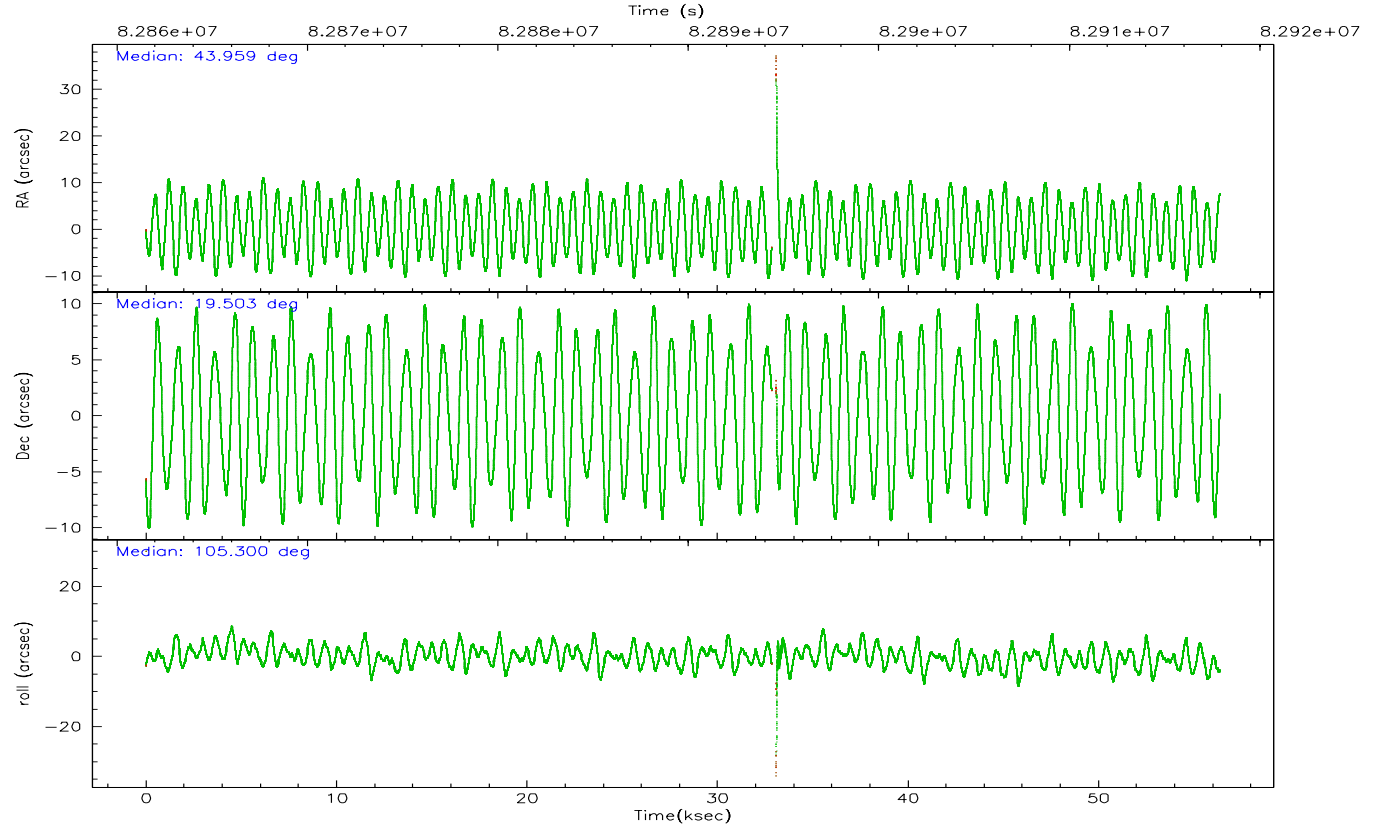
	ccd 2	ccd 3	ccd 5	ccd 6	ccd 7	ccd 8
grade 0 events	14583	15744	34637	15624	24581	27602
	4%	5%	7%	4%	5%	6%
grade 1 events	136	127	506	127	487	239
	0%	0%	0%	0%	0%	0%
grade 2 events	7739	7235	69345	7571	43201	17161
	2%	2%	14%	2%	9%	4%
grade 3 events	3400	3408	10853	3821	20130	9485
	1%	1%	2%	1%	4%	2%
grade 4 events	3433	3471	10138	3660	20157	8733
	1%	1%	2%	1%	4%	2%
grade 5 events	10780	11412	38133	13025	38825	16489
	3%	3%	7%	3%	8%	4%
grade 6 events	6442	6410	113256	7004	110321	20332
	1%	2%	23%	2%	24%	5%
grade 7 events	282638	264507	206458	275287	191486	306284
	85%	84%	42%	84%	42%	75%

3.2 Compared Parameters

Parameter	Planned	Actual	Parameter	Planned	Actual
Instrument	ACIS	ACIS	Obspar format version number	6	6
Detector	ACIS-235678	ACIS-235678	Obspar file type	PREDICTED	ACTUAL
Grating	NONE	NONE	Obspar update status	OVERRIDE	OVERRIDE
Data mode	FAINT	FAINT	On-chip summing requested	N	N
Observation mode	POINTING	POINTING	Subarray requested	NONE	NONE
Pointing RA	43.958167	43.95884137008031	Alternating exposures requested	N	N
Pointing Dec	19.498578	19.50316420557225	Primary exposure time	3.200000	3.200000
Pointing Roll	105.144780	105.3082769877738			
SIM focus pos (mm)	-0.6828225247311905	-0.6828225247311905			
SIM defocus (mm)	0.001444942264670179	0.001444942264670179			
SIM translation stage pos (mm)	-190.1425803651734	-190.1425803651734			
SIM translation stage offset (mm)	0.01005726120618533	0.01005726120618533			
Observation start time	82861525.184000	82861525.184			
Observation start date	2000-08-17T01:05:25	2000-08-17T01:05:25			
Observation end time	82917920.567476	82917920.567476			
Observation end date	2000-08-17T16:45:21	2000-08-17T16:45:20			
Read mode	TIMED	TIMED			

3.3 Aspect



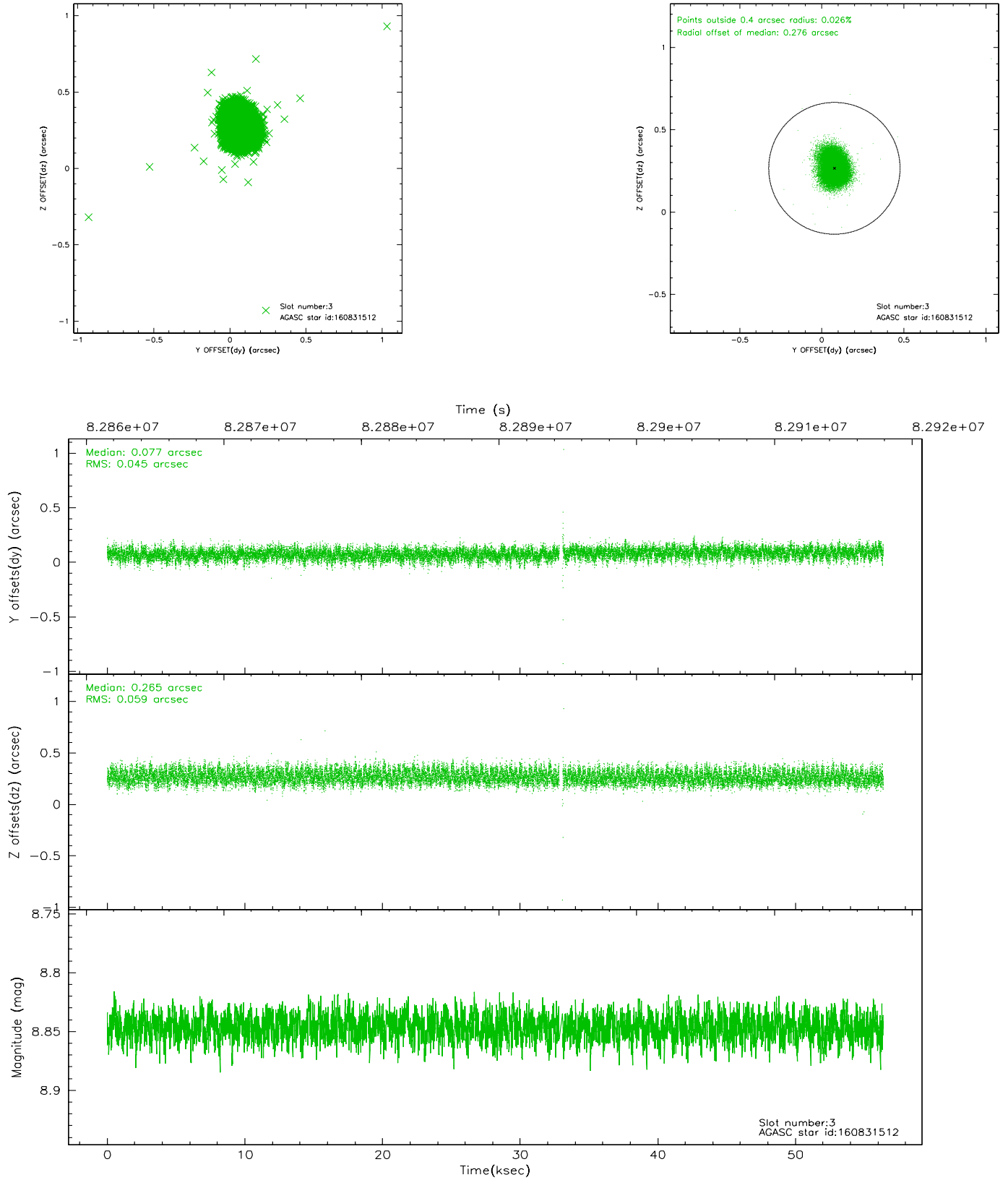


Slot Statistics

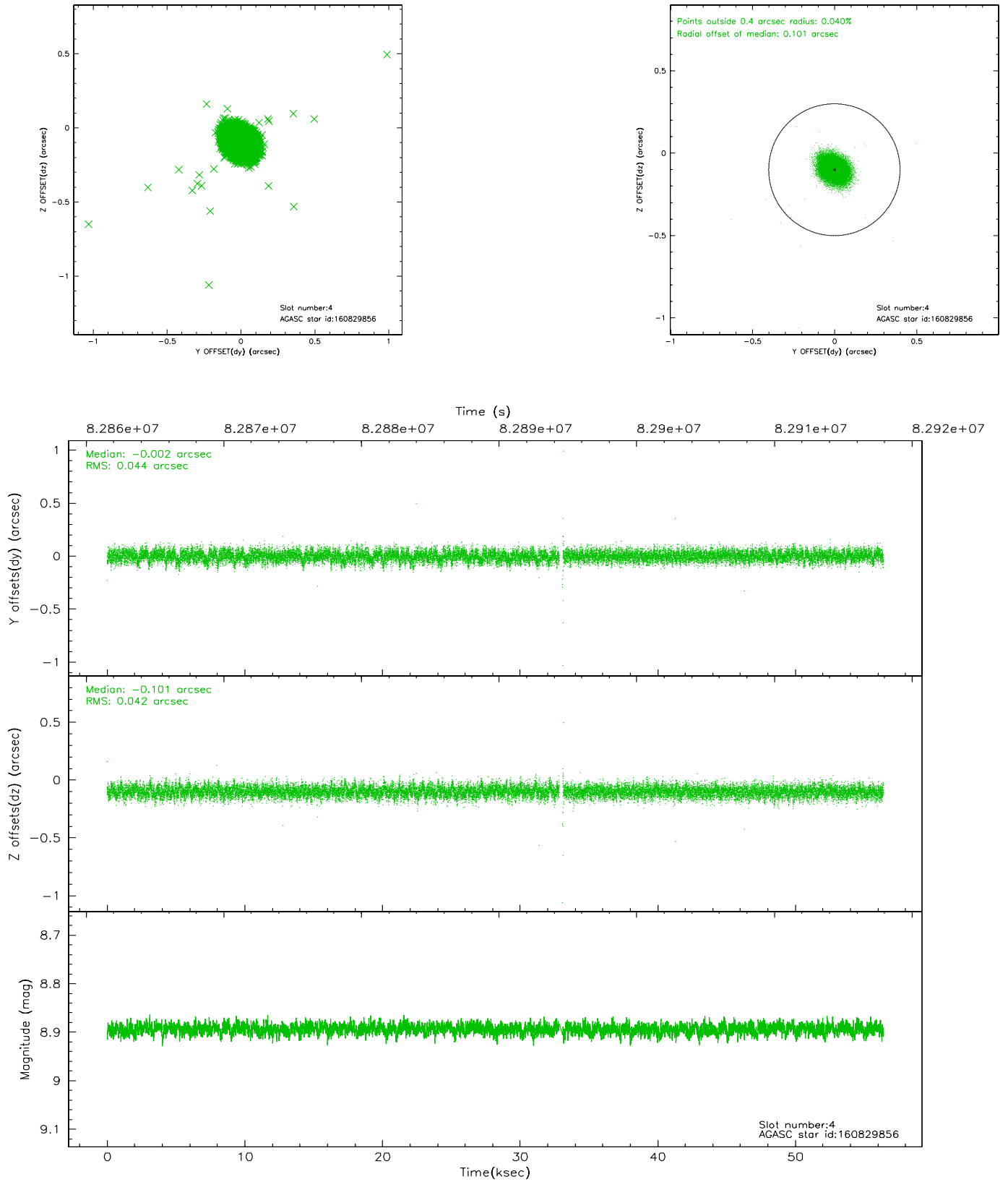
slot	status	id	mag	n_pts	med_dy	med_dz	dr1	dr2	ra	dec	mean_y	mean_z
0	FID	ACIS-S-2	7.11	10486	-0.024	0.031	0.008	0.014	0.000000	0.000000	-753.89	-1726.87
1	FID	ACIS-S-4	7.21	10486	-0.059	0.004	0.007	0.014	0.000000	0.000000	2159.34	181.59
2	FID	ACIS-S-5	7.23	10488	0.052	-0.026	0.007	0.019	0.000000	0.000000	-1806.66	175.22
3	GUIDE	160831512	8.84	20973	0.057	0.262	0.080	0.129	44.599048	19.229287	-1430.96	-1792.98
4	GUIDE	160829856	8.90	20969	0.005	-0.084	0.068	0.115	43.658777	19.344007	-200.33	1183.88
5	GUIDE	160832408	9.16	20962	0.183	-0.078	0.077	0.128	43.956092	19.153477	-1126.94	388.72
6	GUIDE	160830024	9.50	20966	-0.087	-0.346	0.107	0.171	43.276963	19.335140	111.32	2443.07
7	GUIDE	161223880	9.95	20881	-0.161	0.249	0.134	0.228	44.390586	20.017714	1493.56	-1843.24

3.4 Star Slots

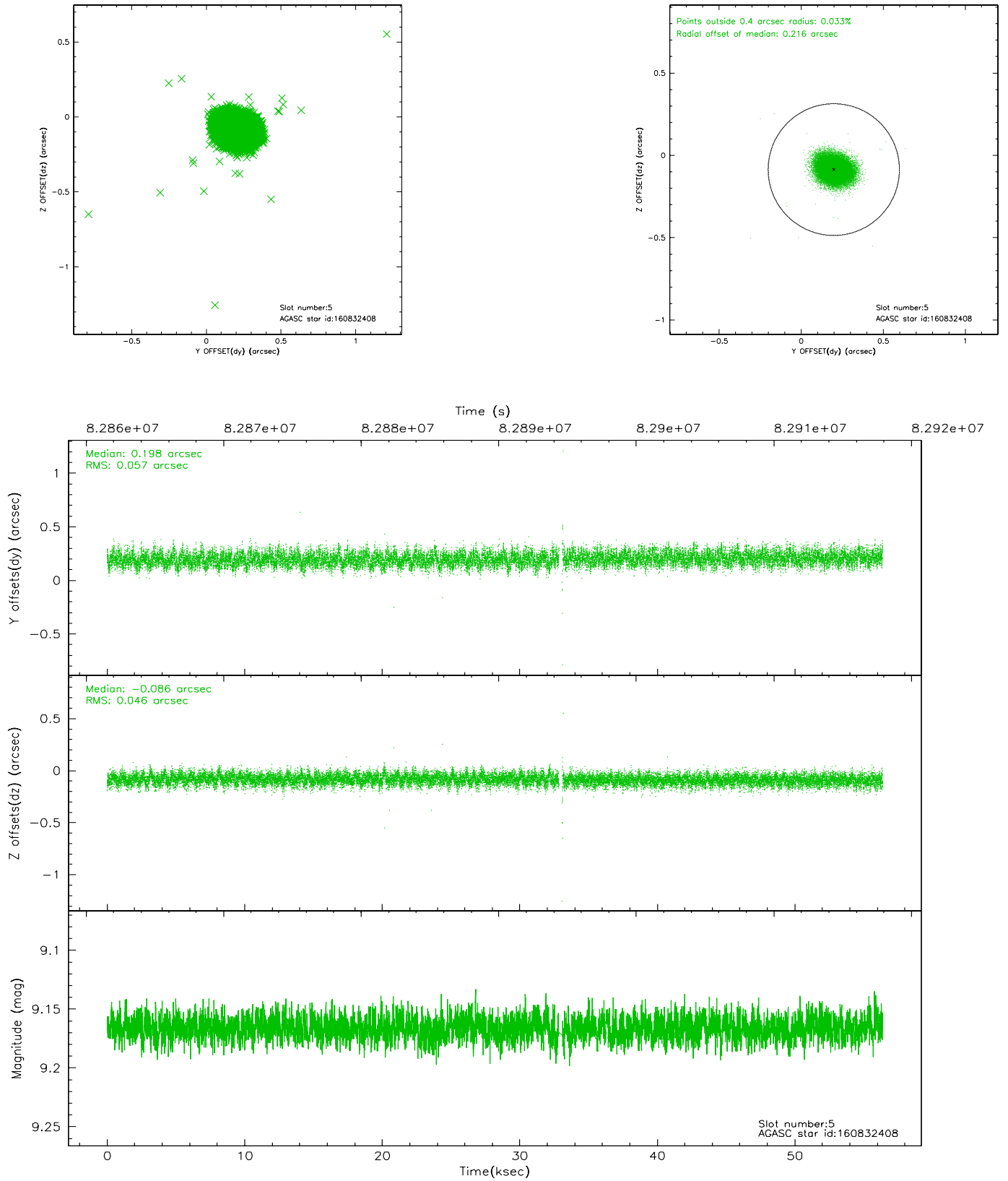
3.4.1 Slot 3



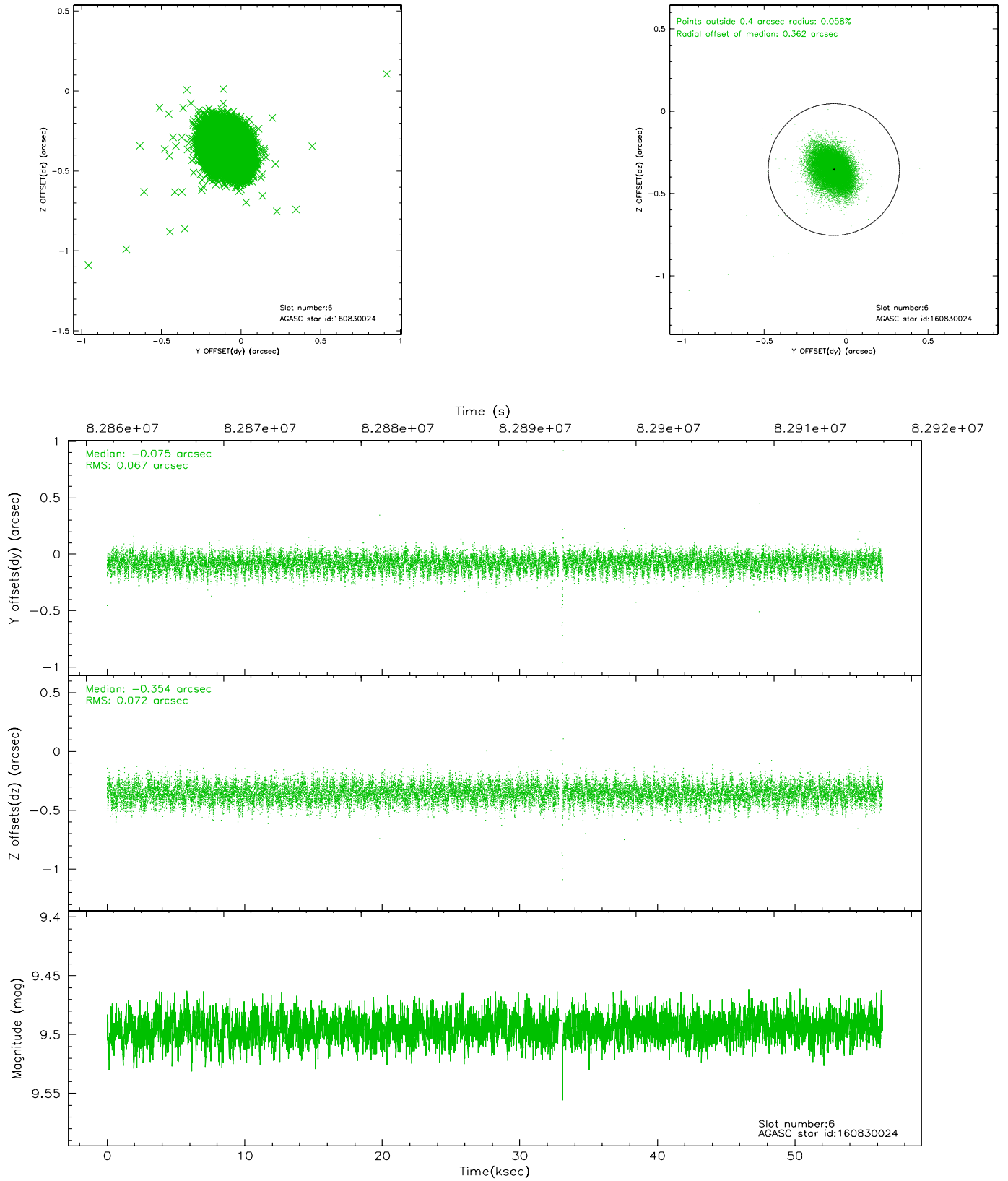
3.4.2 Slot 4



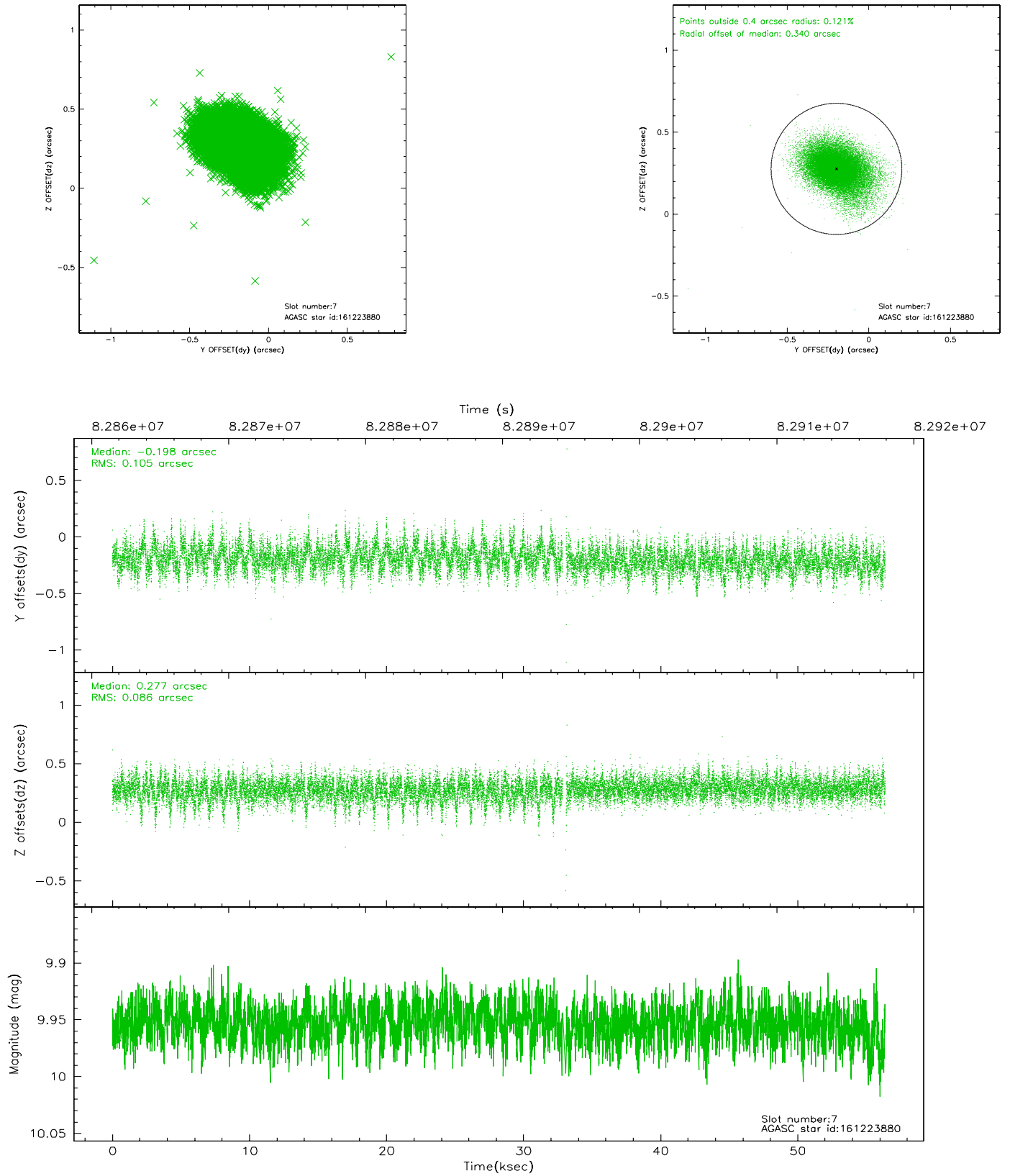
3.4.3 Slot 5



3.4.4 Slot 6

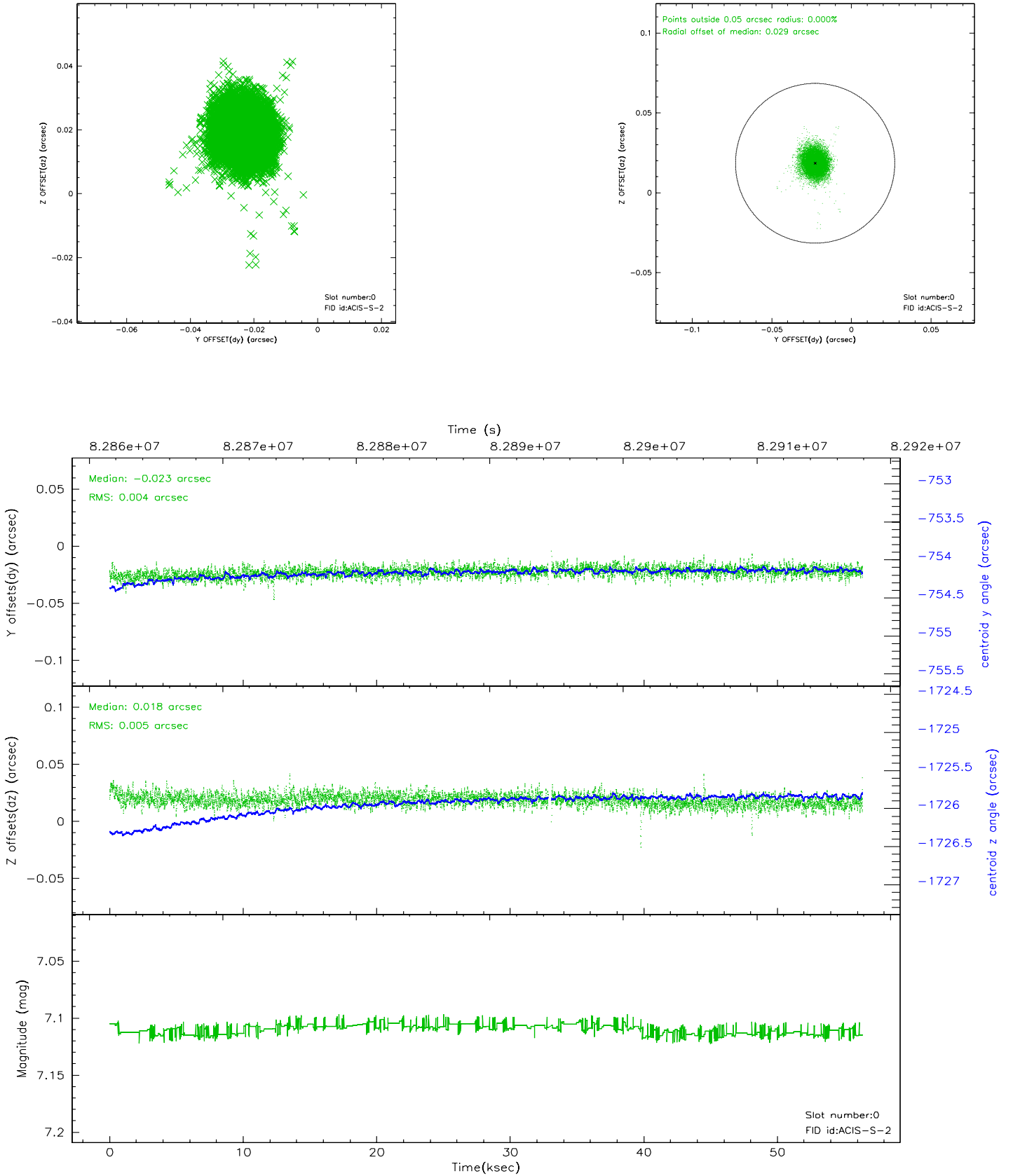


3.4.5 Slot 7

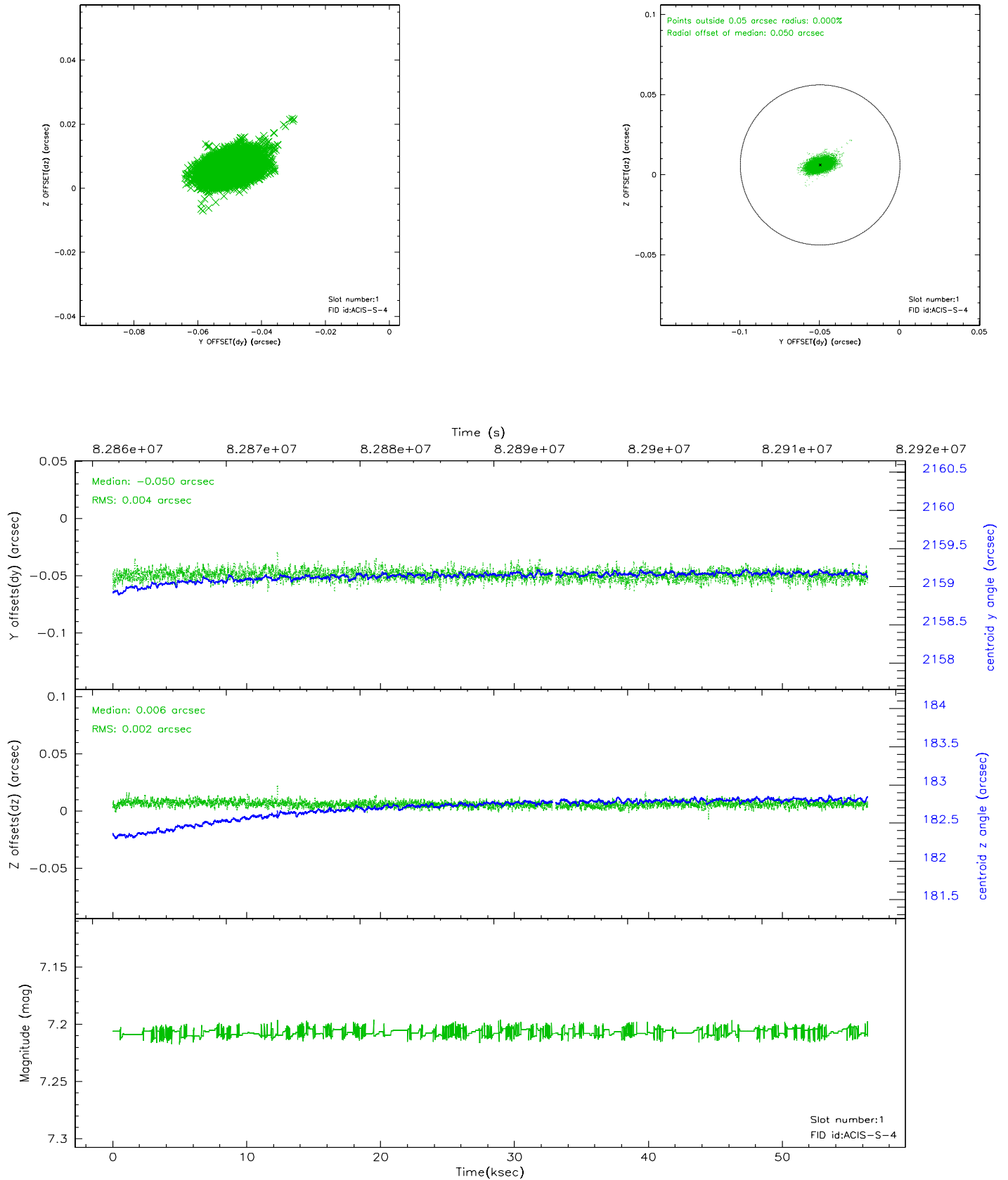


3.5 FID Slots

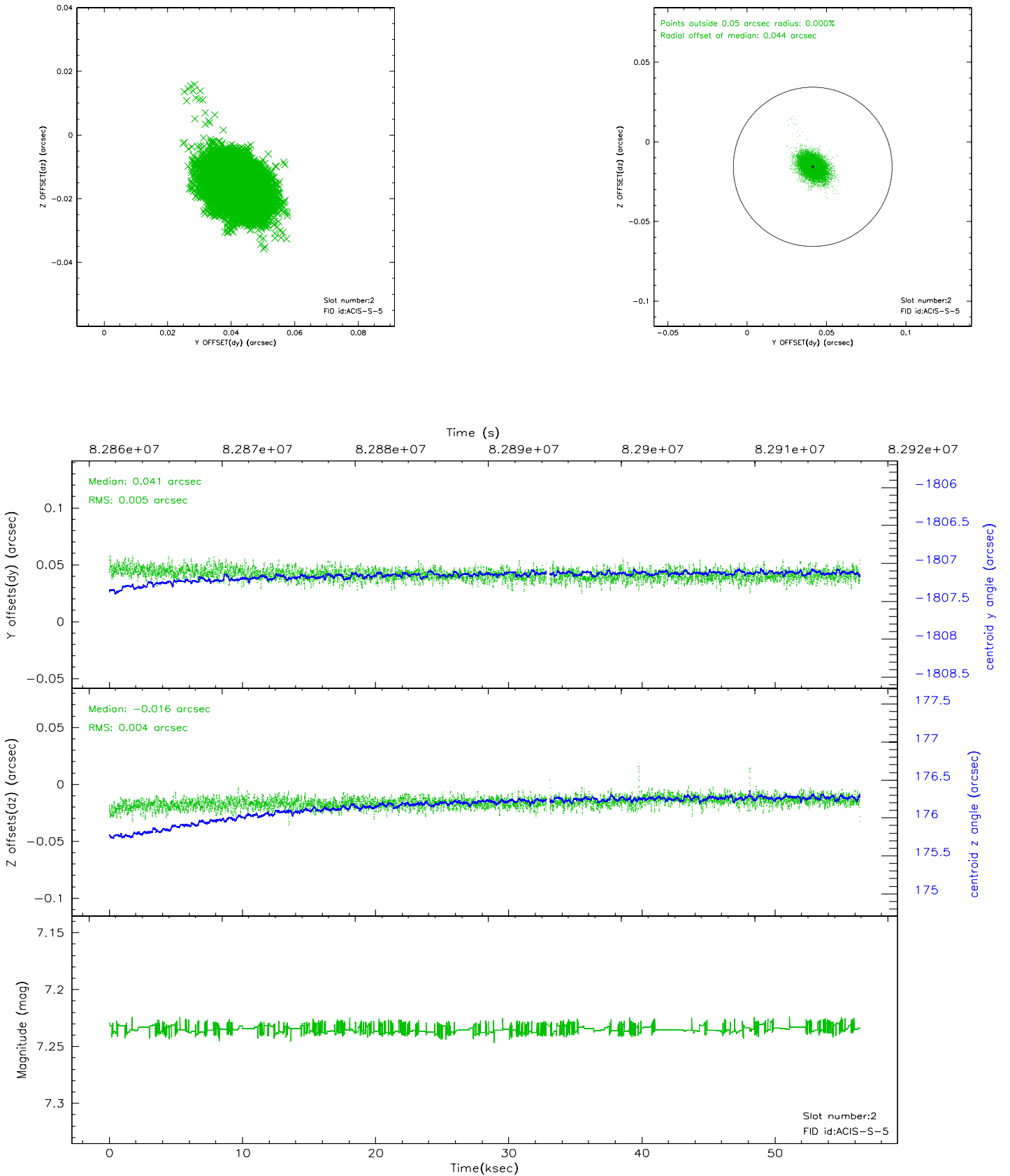
3.5.1 Slot 0



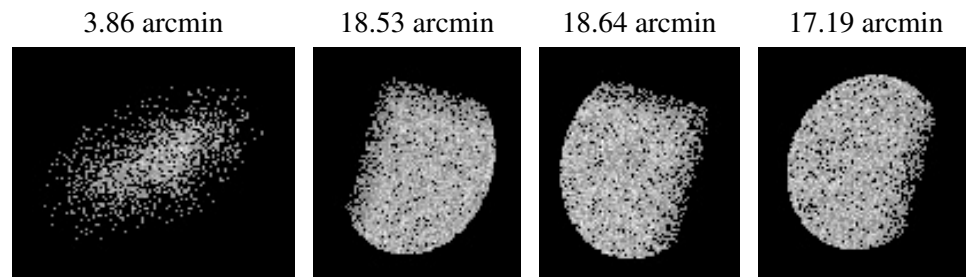
3.5.2 Slot 1



3.5.3 Slot 2



4 Point Sources



A Summary

A.1 Status

V&V Scientist	Joy Nichols
V&V Date (YYYY-MM-DD)	2008.04.25
V&V Edition	1
V&V Disposition and Status	OK
V&V Charge Time	98.812

A.2 Comments

A period of high background 40-45 ksec into obi=1 of this observation produced enhanced count rate during this period.