

# V&V Reference Report

## L2 ASCDS Version : 8.4.5

Observation 939 - L2 Version 4  
Chandra X-Ray Center

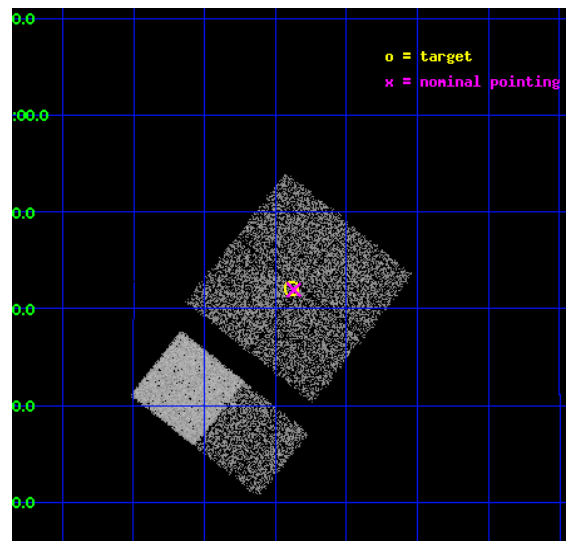
L2 Processing Date : Aug 28 2012

## Contents

<b>1</b>	<b>Front</b>	<b>2</b>
<b>2</b>	<b>OBI</b>	<b>3</b>
2.1	OBI . . . . .	3
2.1.1	Images . . . . .	3
2.1.2	Bias . . . . .	3
2.1.3	Parameters . . . . .	4
2.1.4	Events . . . . .	4
2.2	Compared Parameters . . . . .	5
2.3	Aspect . . . . .	6
2.4	Star Slots . . . . .	9
2.4.1	Slot 3 . . . . .	9
2.4.2	Slot 4 . . . . .	10
2.4.3	Slot 5 . . . . .	11
2.4.4	Slot 6 . . . . .	12
2.4.5	Slot 7 . . . . .	13
2.5	FID Slots . . . . .	14
2.5.1	Slot 0 . . . . .	14
2.5.2	Slot 1 . . . . .	15
2.5.3	Slot 2 . . . . .	16
<b>A</b>	<b>Summary</b>	<b>17</b>
A.1	Status . . . . .	17
A.2	Comments . . . . .	17

# 1 Front

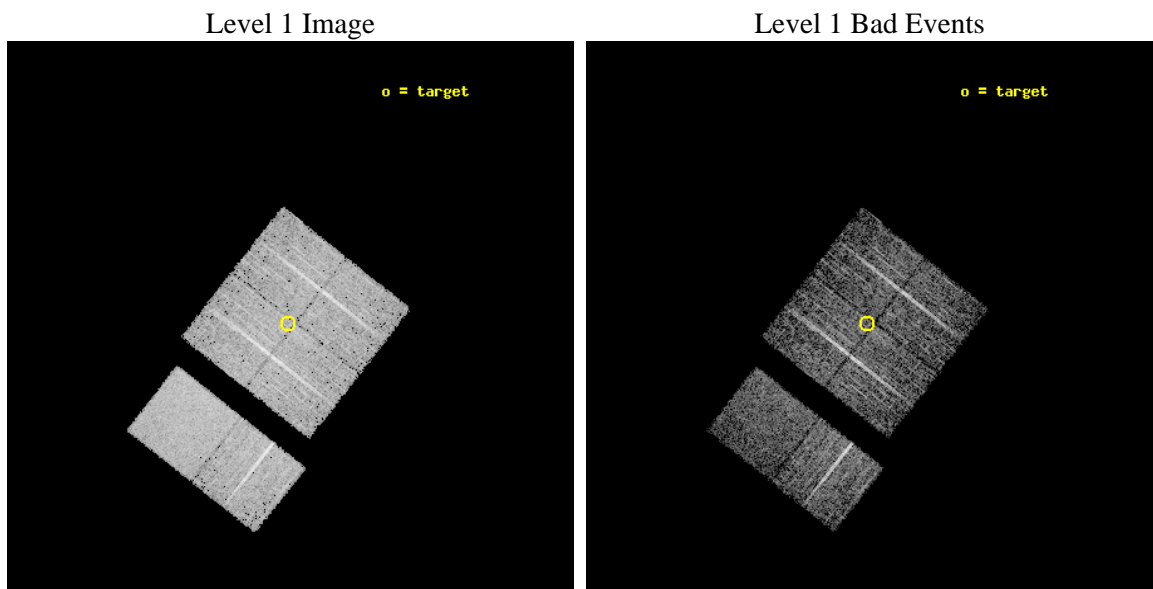
seq_num	900011	Sequence number
obs_id	939	Observation id
title	AXAF OBSERVATION OF FAINT HARD X-RAY SOURCES DISCOVERED WITH ASCA	&#160
observer	Dr. Tadayuki Takahashi	Principal investigator
object	AX J1510+0742	Source name
dtcycle	0	&#160
cycle	P	events from which exps? Prim/Second/Both
ra_targ	227.5975	Observer's specified target RA [deg]
dec_targ	7.700611	Observer's specified target Dec [deg]
ra_nom	227.59265888101	Nominal RA [deg]
dec_nom	7.6992235409077	Nominal Dec [deg]
roll_nom	218.24485080735	Nominal Roll [deg]
revision	4	Processing version of data
ontime	4929.768846035	Sum of GTIs [s]
livetime	4867.3451445561	Livetime [s]
ontime0	4932.8866862655	Sum of GTIs [s]
ontime1	4932.9277262688	Sum of GTIs [s]
ontime2	4932.9687662721	Sum of GTIs [s]
ontime3	4929.768846035	Sum of GTIs [s]
ontime6	4929.8509260416	Sum of GTIs [s]
ontime7	4933.0508462638	Sum of GTIs [s]
l2events	32414	Number of level 2 events



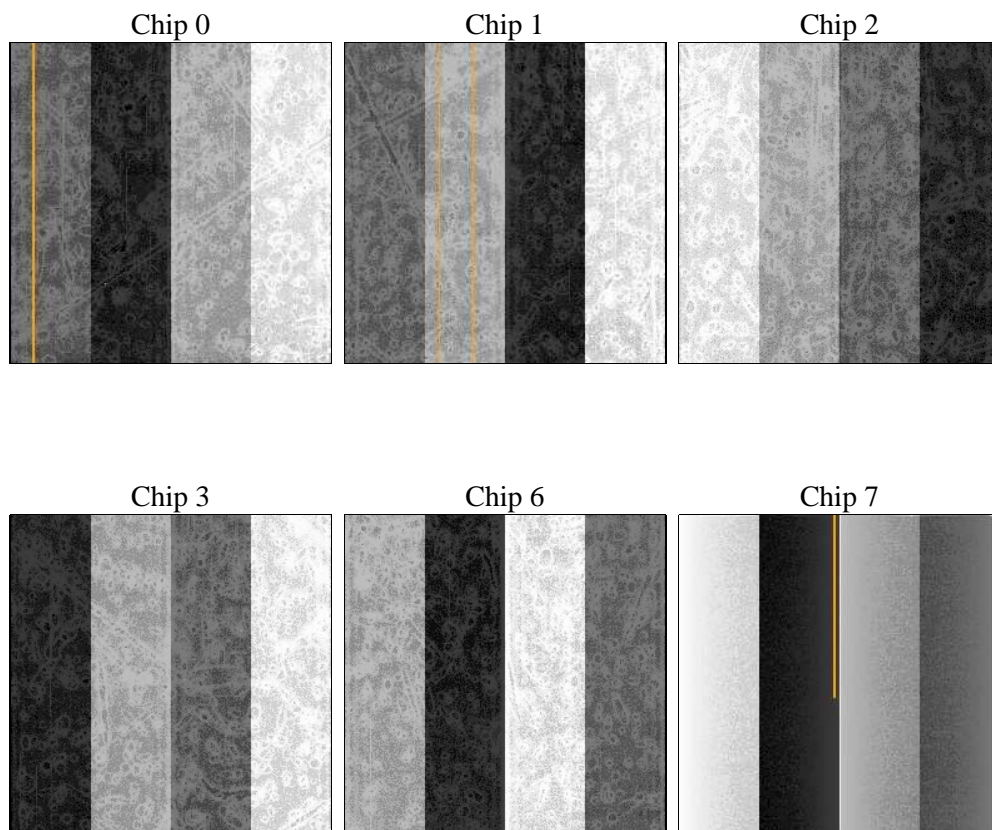
## 2 OBI

### 2.1 OBI

#### 2.1.1 Images



#### 2.1.2 Bias



### 2.1.3 Parameters

obi_num	0	Obi number	sched_exp_time	5000.000000	[s] Scheduled observation exposure time
ascdsver	8.4.5	Processing system revision	ontime	4929.768846035	Sum of GTIs [s]
caldsver	4.5.1.1	&#160	ontime0	4932.8866862655	Sum of GTIs [s]
date	2012-08-28T18:44:16	Date and time of file creation	ontime1	4932.9277262688	Sum of GTIs [s]
revision	4	Processing version of data	ontime2	4932.9687662721	Sum of GTIs [s]
			ontime3	4929.768846035	Sum of GTIs [s]
			ontime6	4929.8509260416	Sum of GTIs [s]
			ontime7	4933.0508462638	Sum of GTIs [s]
			l1events	198935	Number of level 1 events

### 2.1.4 Events

	ccd 0	ccd 1	ccd 2	ccd 3	ccd 6	ccd 7		ccd 0	ccd 1	ccd 2	ccd 3	ccd 6	ccd 7
level 1 events	29433	29960	32727	32756	34909	39150	grade 0 events	1752	1710	1617	1682	1601	1785
rejected events	25598	26021	29130	29105	31214	22319		5%	5%	4%	5%	4%	4%
rejected %	86%	86%	89%	88%	89%	57%	grade 1 events	9	11	16	16	17	37
								0%	0%	0%	0%	0%	0%
							grade 2 events	742	743	736	685	704	3313
								2%	2%	2%	2%	2%	8%
							grade 3 events	390	398	333	347	360	1543
								1%	1%	1%	1%	1%	3%
							grade 4 events	358	408	321	359	361	1488
								1%	1%	0%	1%	1%	3%
							grade 5 events	1065	1108	999	1083	1223	3731
								3%	3%	3%	3%	3%	9%
							grade 6 events	597	682	596	583	673	8714
								2%	2%	1%	1%	1%	22%
							grade 7 events	24520	24900	28109	28001	29970	18539
								83%	83%	85%	85%	85%	47%

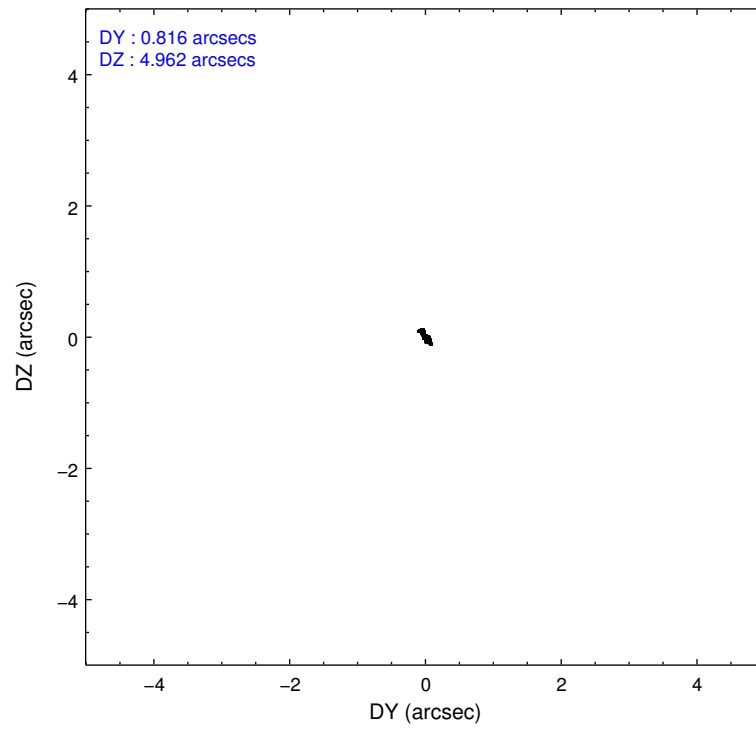
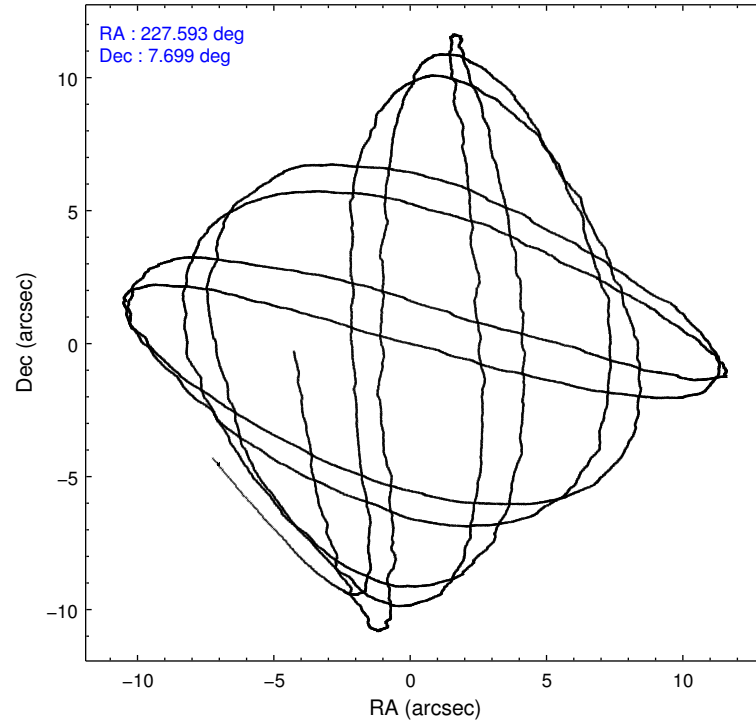


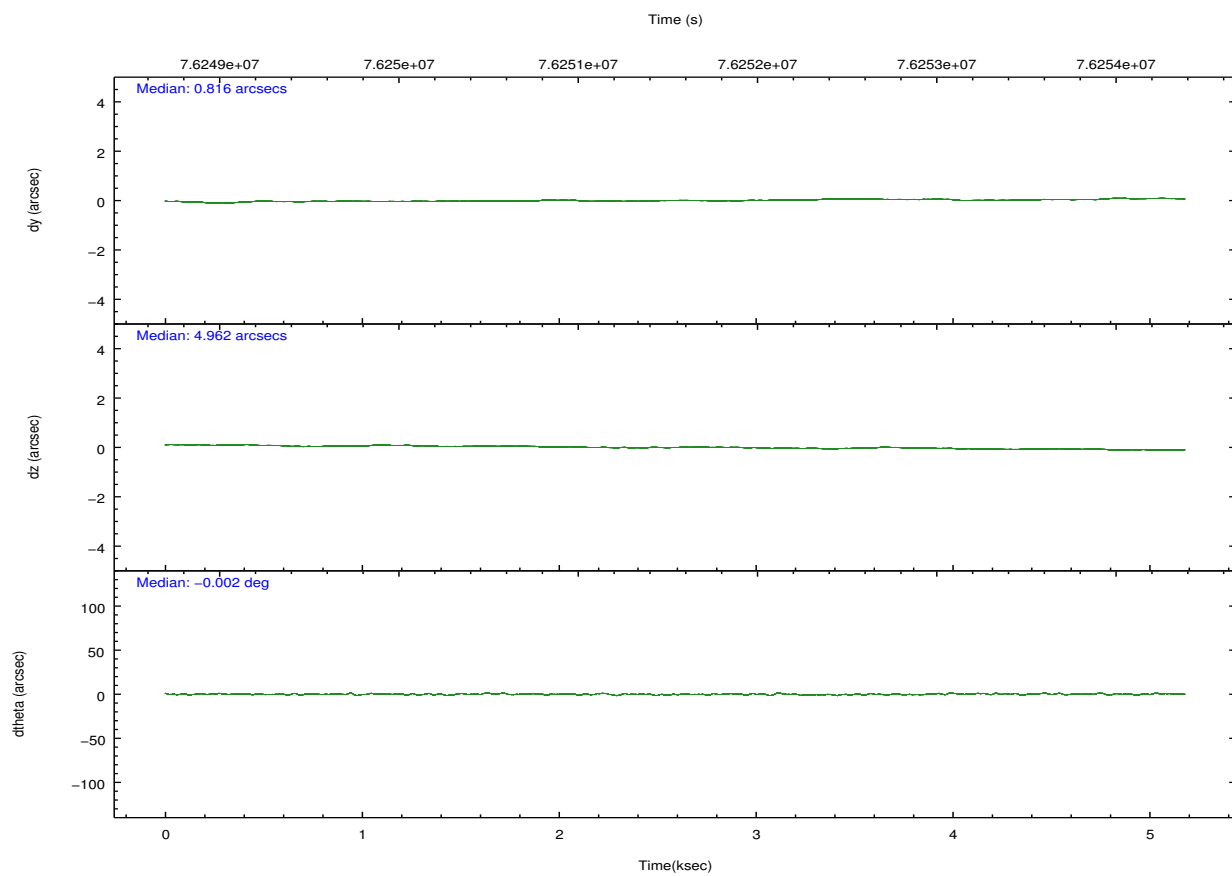
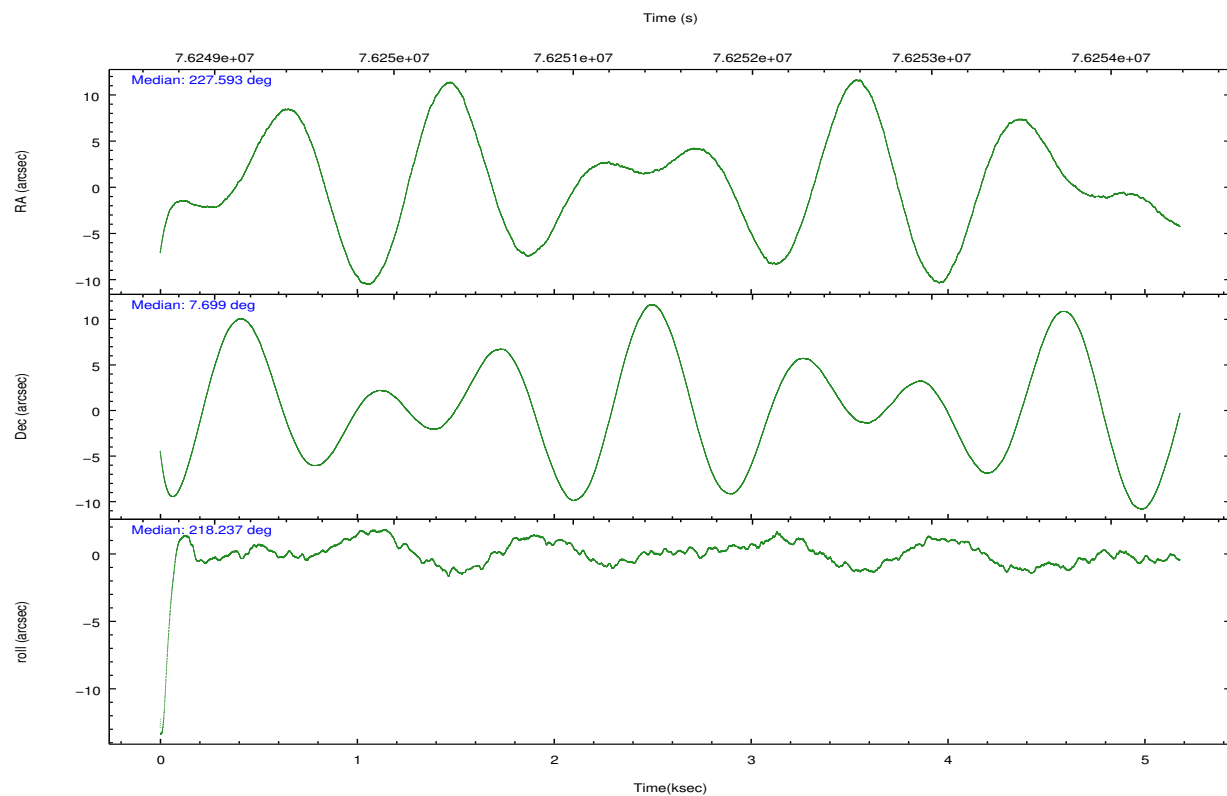
## 2.2 Compared Parameters

Parameter	Planned	Actual
Instrument	ACIS	ACIS
Detector	ACIS-012367	ACIS-012367
Grating	NONE	NONE
Data mode	VFAINT	VFAINT
Observation mode	POINTING	POINTING
[deg] Pointing RA	227.603120	227.5926588810069
[deg] Pointing Dec	7.724864	7.699223540907736
[deg] Pointing Roll	218.034793	218.2448508073522
[mm] SIM focus pos	-0.782348	-0.7809083437167272
[mm] SIM defocus	0	0.001439871863259334
[mm] SIM translation stage pos	-233.592463	-233.5874344608287
[mm] SIM translation stage offset	0	-0.005018542100998502
[s] Observation start time (MET)	76249131.184000	76248108.995848
Observation start date	2000-06-01T12:17:47	2000-06-01T12:01:48
[s] Observation end time (MET)	76254131.184000	76254565.471085
Observation end date	2000-06-01T13:41:07	2000-06-01T13:49:25
Read mode	TIMED	TIMED

Parameter	Planned	Actual
Obspar format version number	7	7
Obspar file type	PREDICTED	ACTUAL
Obspar update status	NONE	UPDATED
Number of optional ACIS chips dropped	0	0
On-chip summing requested	N	N
Subarray requested	NONE	NONE
Alternating exposures requested	N	N
[s] Primary exposure time	0.000000	3.2

## 2.3 Aspect



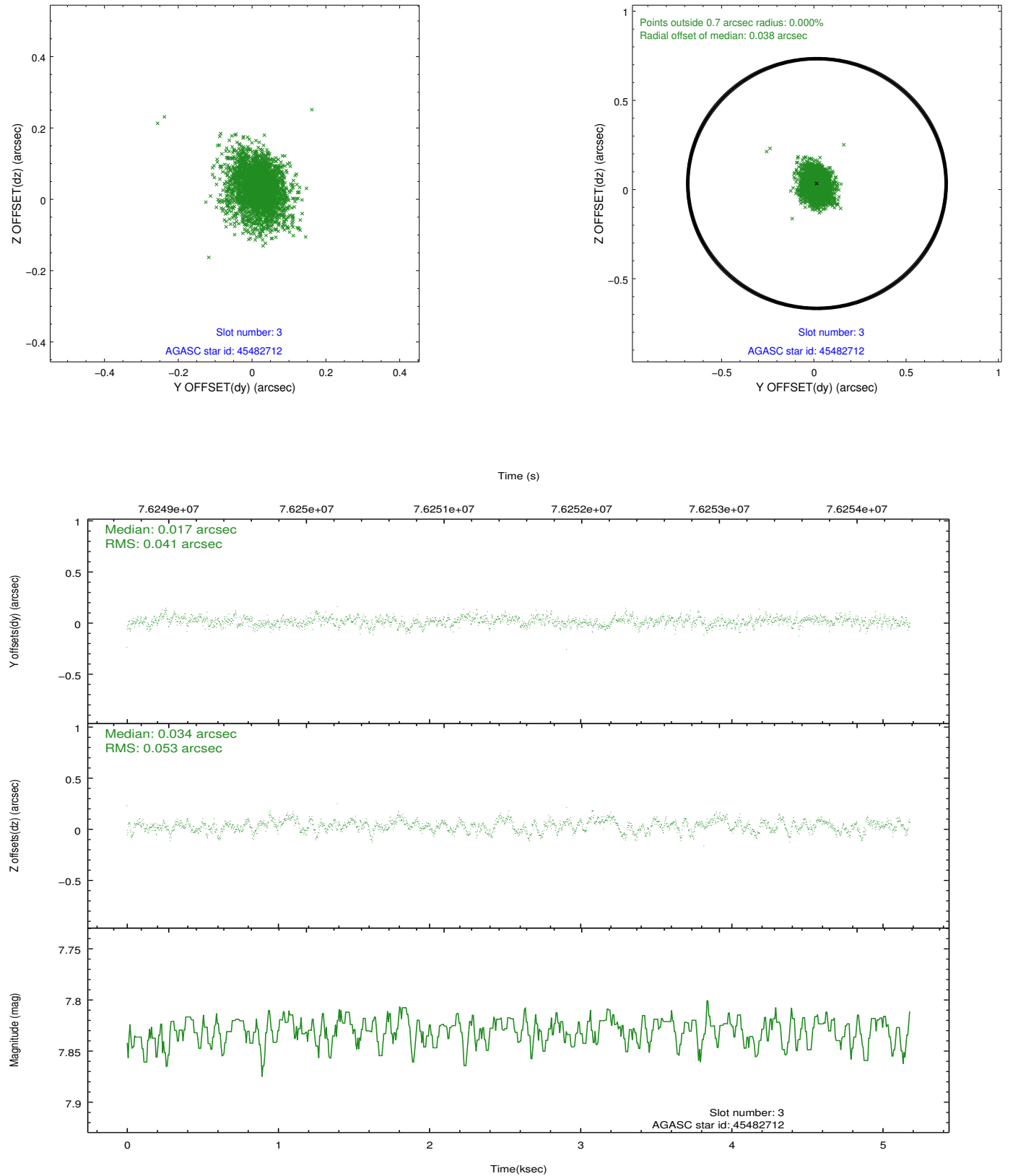


### Slot Statistics

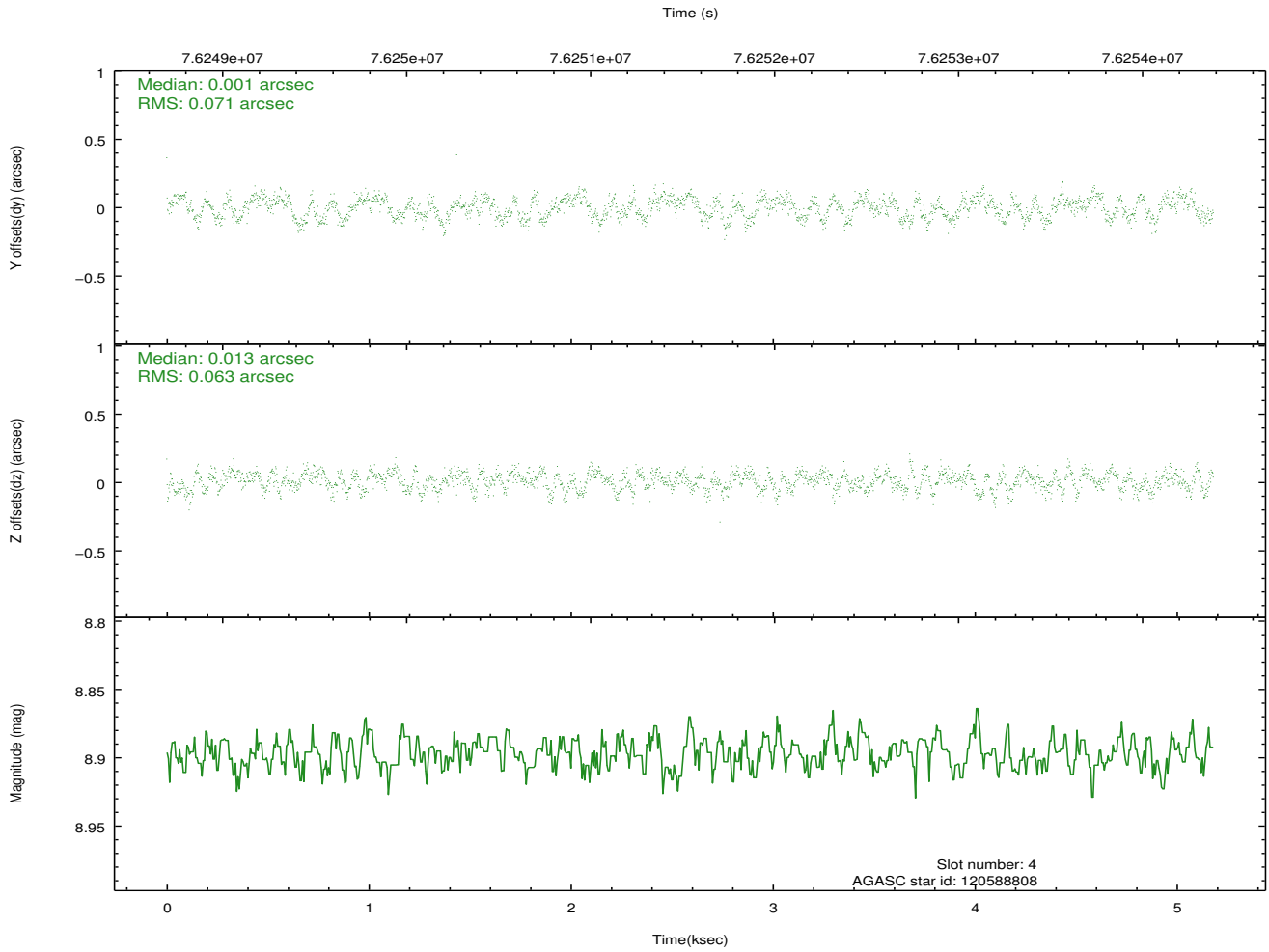
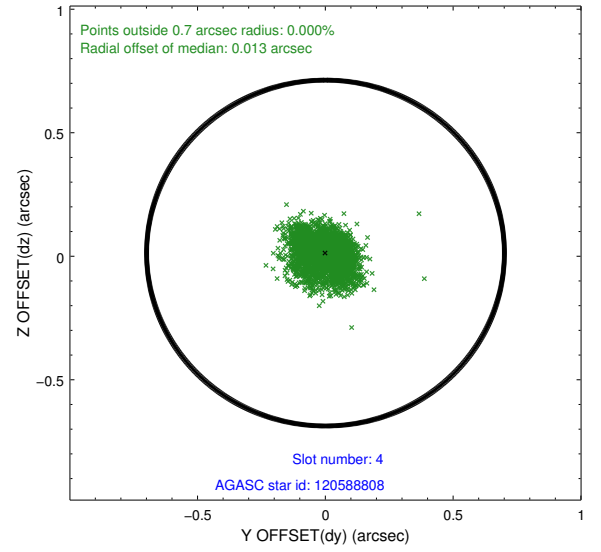
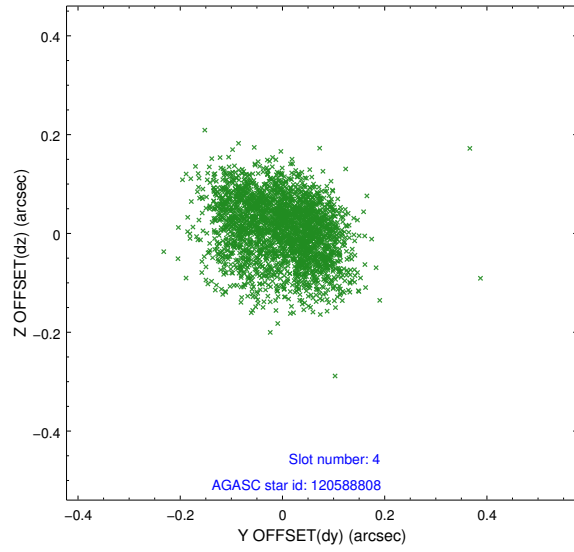
slot	status	id	mag	n_pts	med_dy	med_dz	dr1	dr2	ra	dec	mean_y	mean_z
0	FID	ACIS-I-2	7.15	1263	-0.026	-0.027	0.009	0.014	0.000000	0.000000	-755.16	-834.69
1	FID	ACIS-I-4	7.19	1263	-0.038	0.031	0.006	0.010	0.000000	0.000000	2158.35	1070.95
2	FID	ACIS-I-5	7.23	1263	-0.037	0.064	0.008	0.013	0.000000	0.000000	-1807.49	1070.17
3	GUIDE	45482712	7.83	2526	0.017	0.034	0.070	0.118	227.751708	7.324466	470.29	1462.46
4	GUIDE	120588808	8.90	2527	0.001	0.013	0.103	0.159	227.297709	8.356137	-542.89	-2459.82
5	GUIDE	45484240	8.89	2526	0.025	-0.066	0.093	0.147	228.204200	7.399711	-970.12	2242.01
6	GUIDE	120598768	9.28	2525	0.022	-0.065	0.074	0.123	228.089230	7.937187	-1836.87	465.88
7	GUIDE	120600016	9.57	2522	-0.063	0.089	0.115	0.198	228.430139	7.688520	-2245.91	1918.98

## 2.4 Star Slots

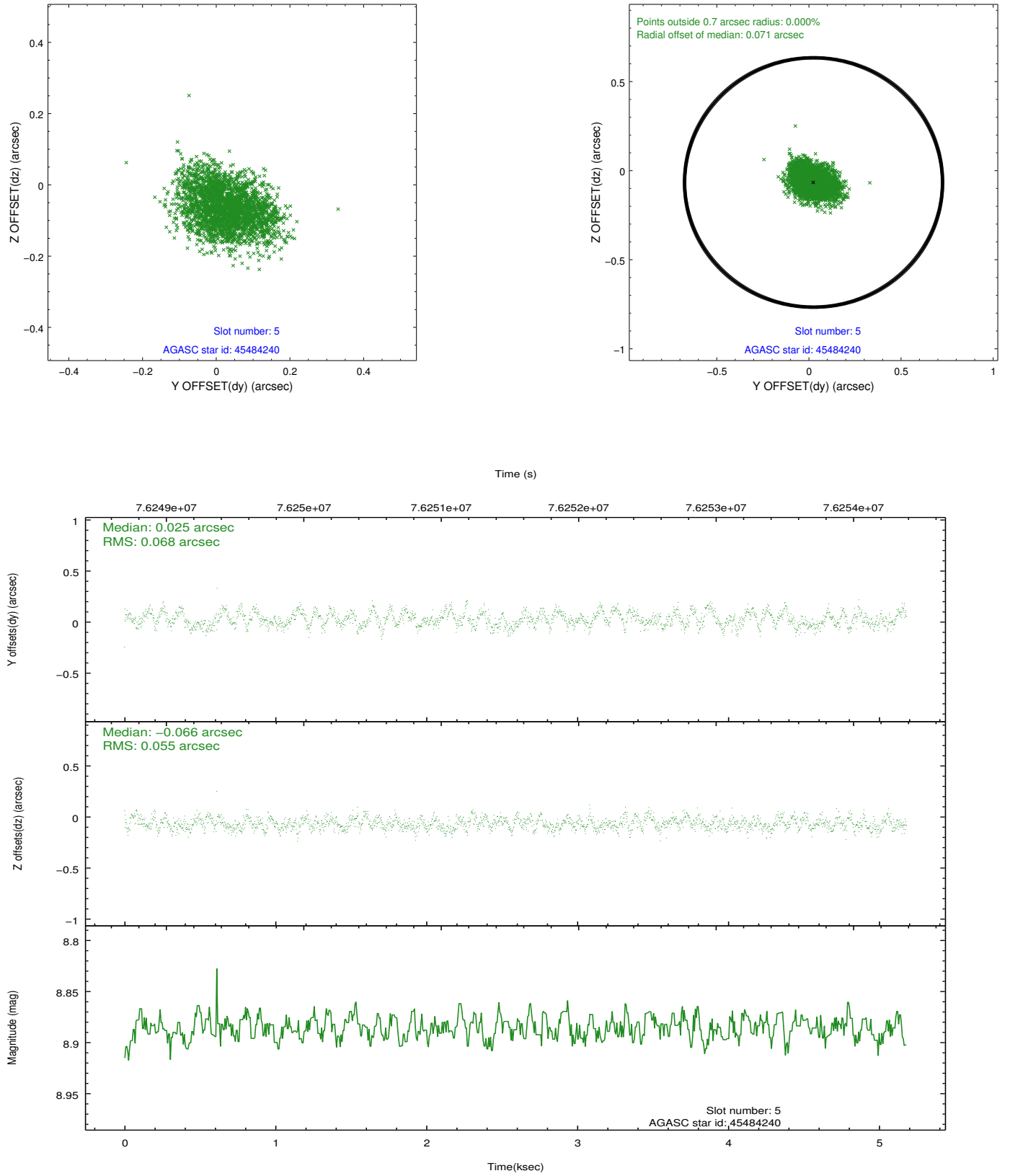
### 2.4.1 Slot 3



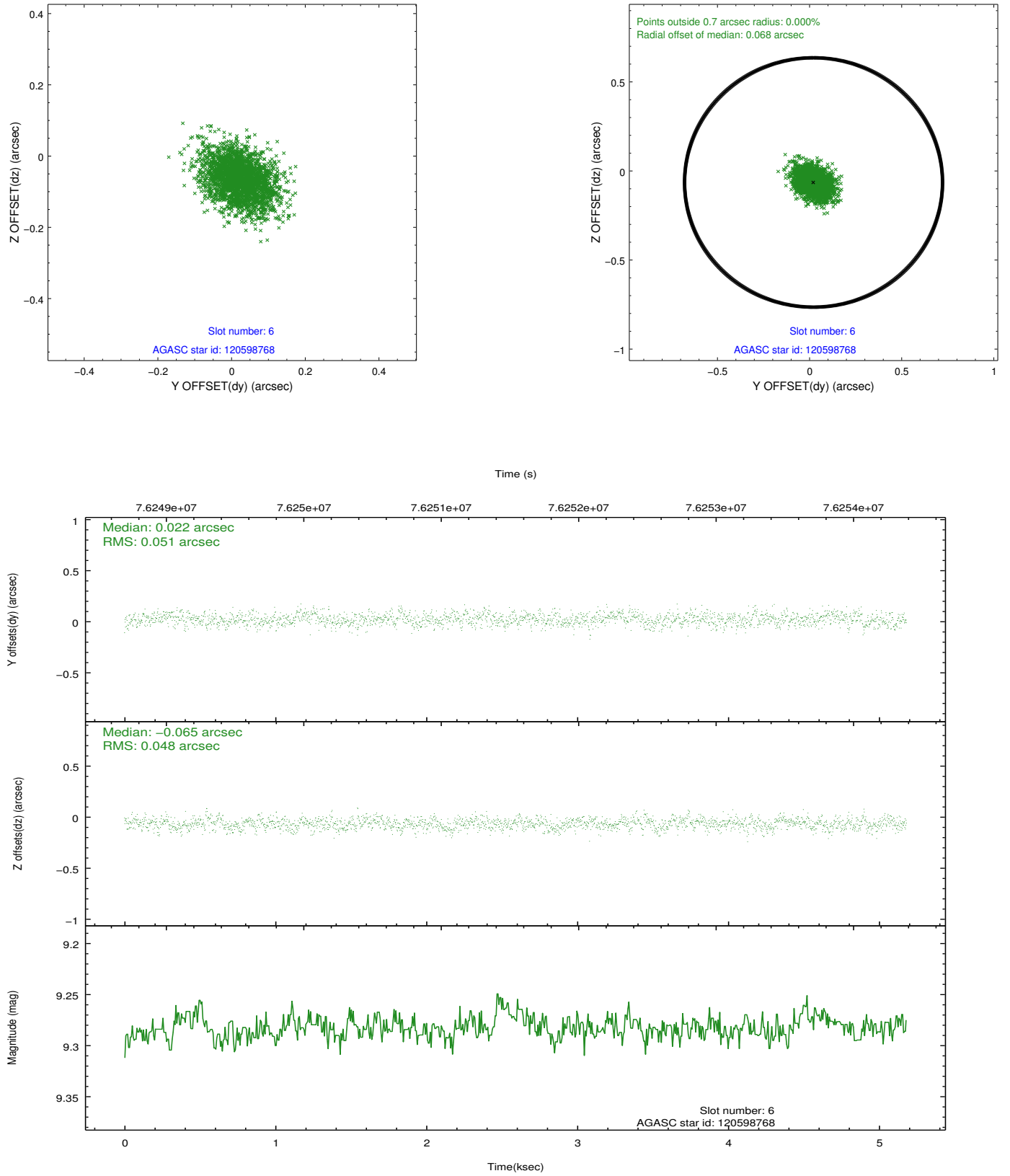
## 2.4.2 Slot 4



### 2.4.3 Slot 5

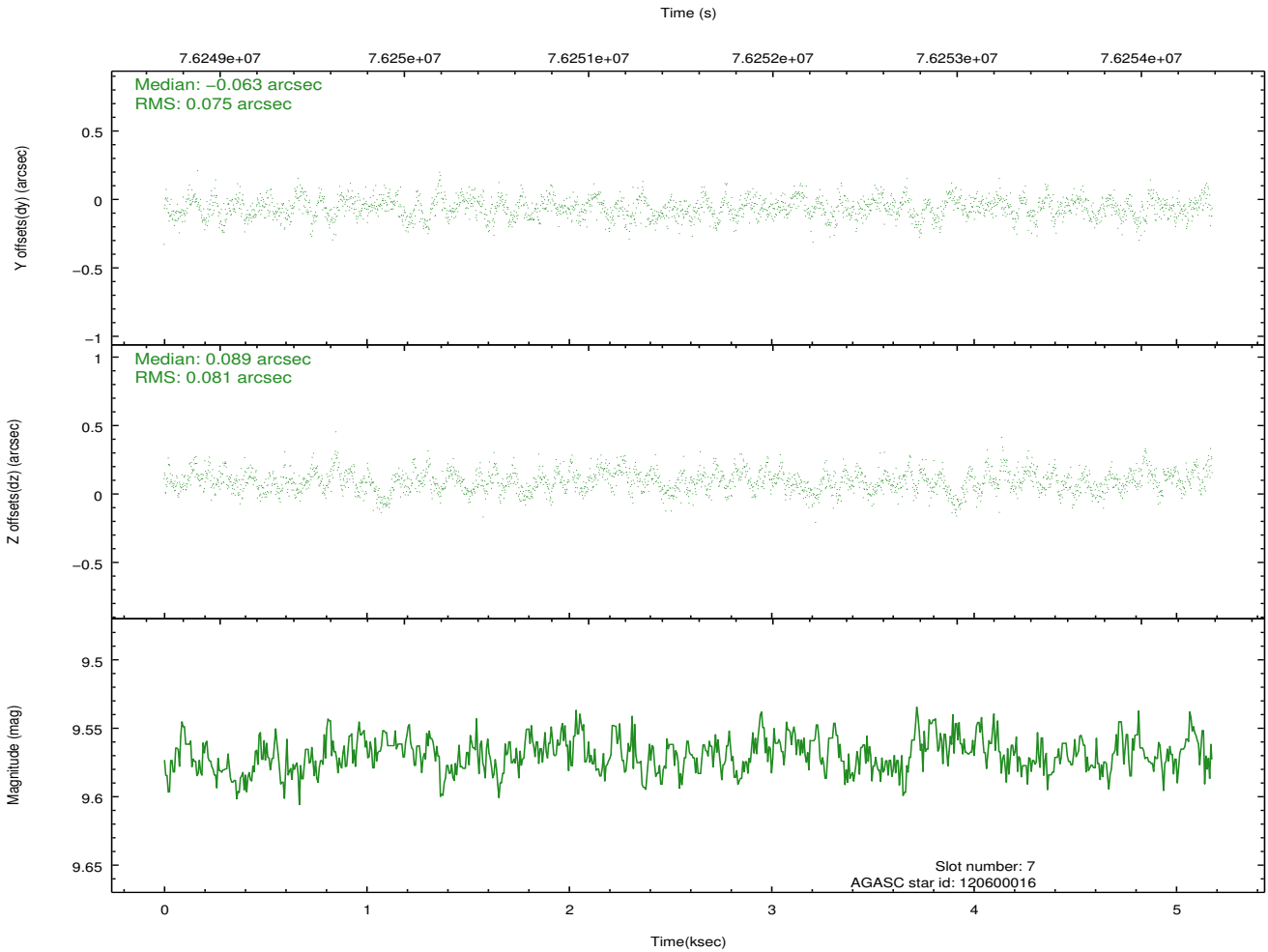
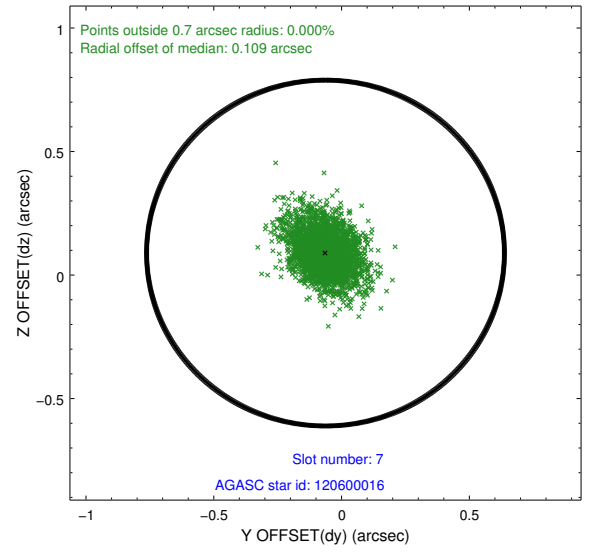
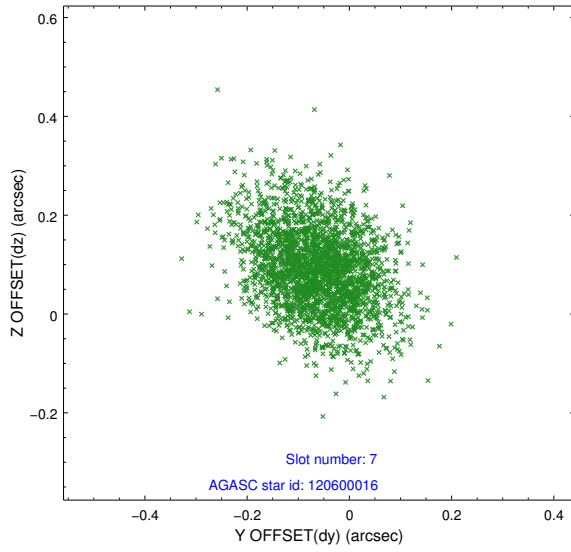


## 2.4.4 Slot 6



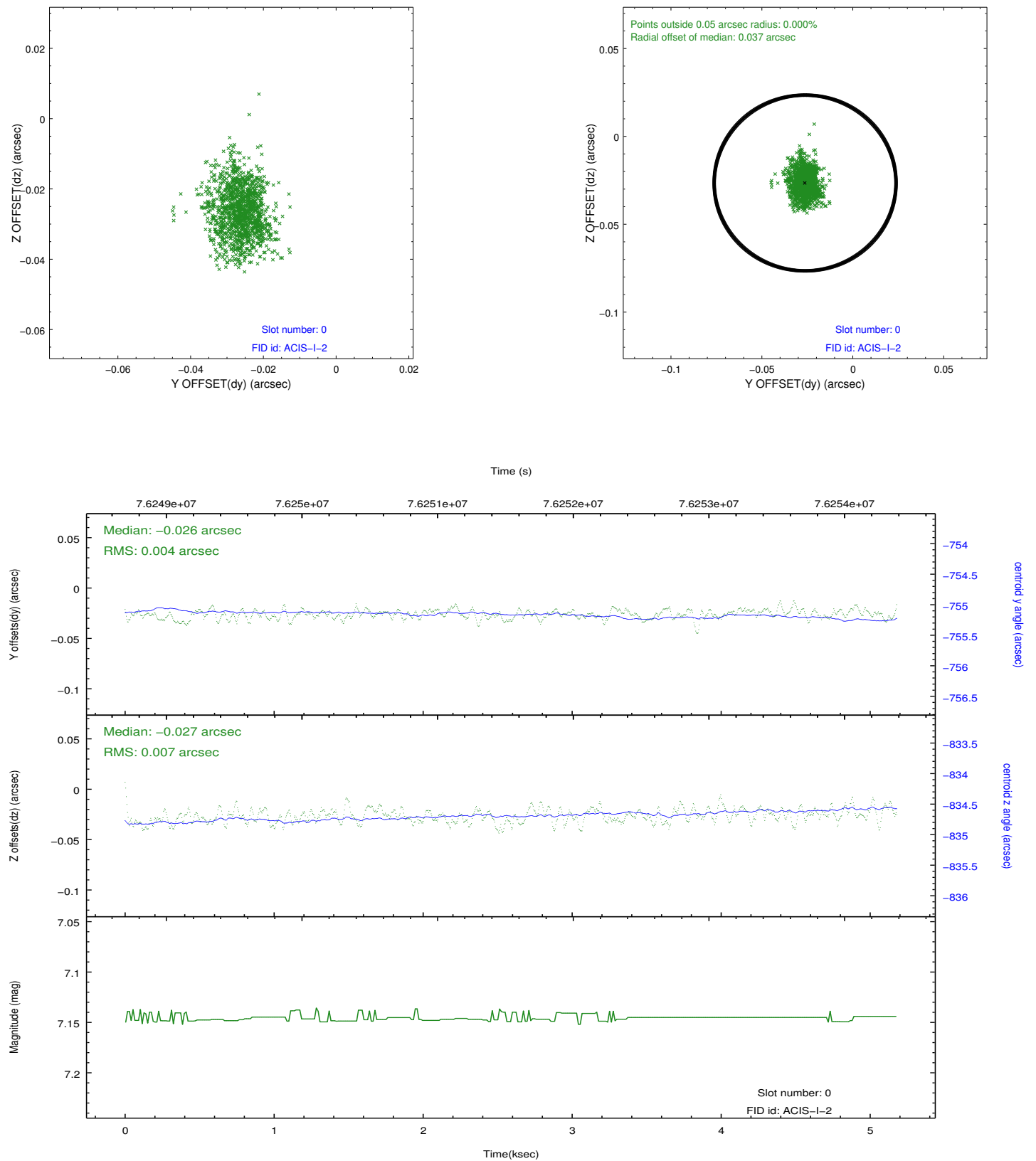


## 2.4.5 Slot 7

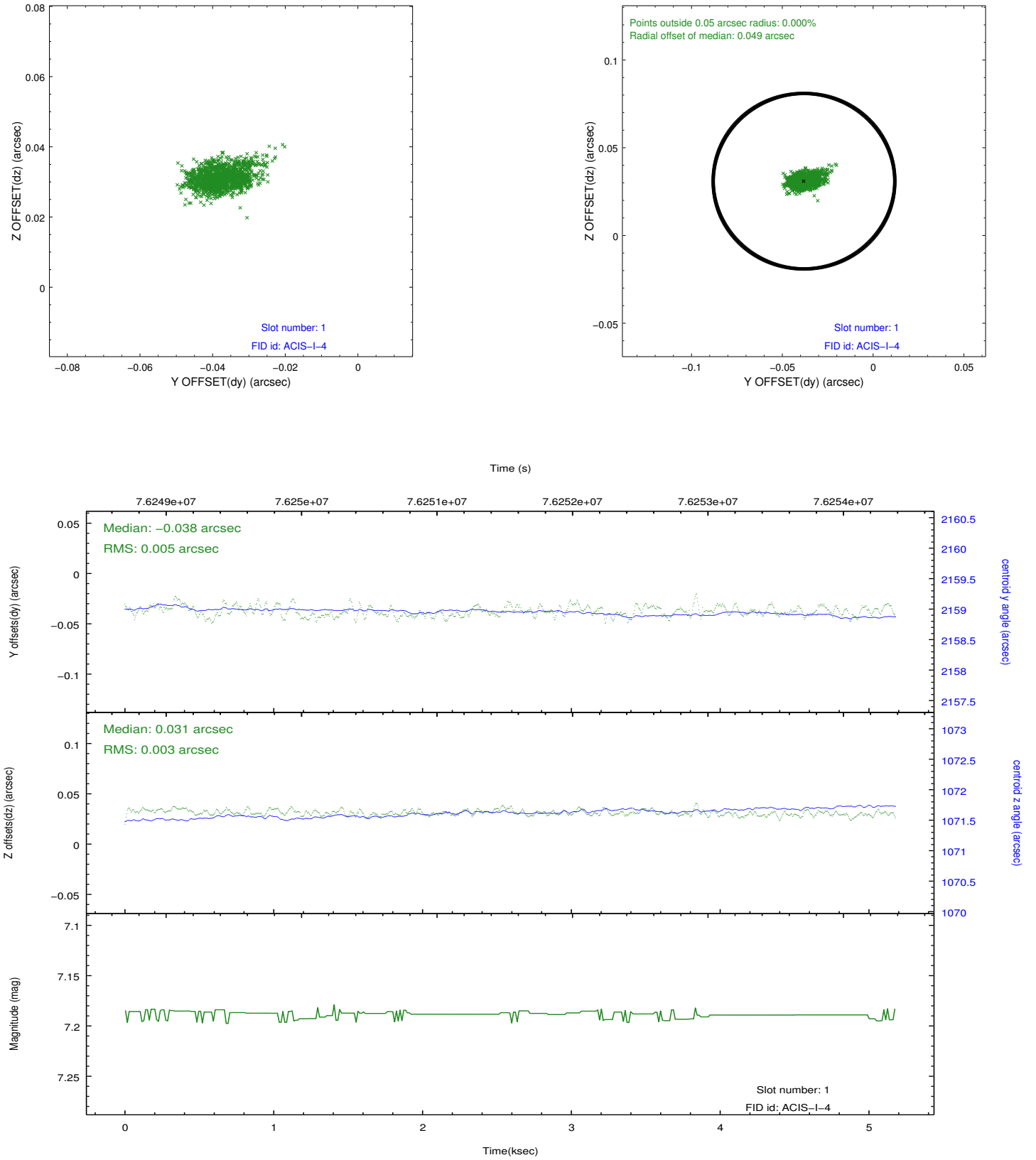


## 2.5 FID Slots

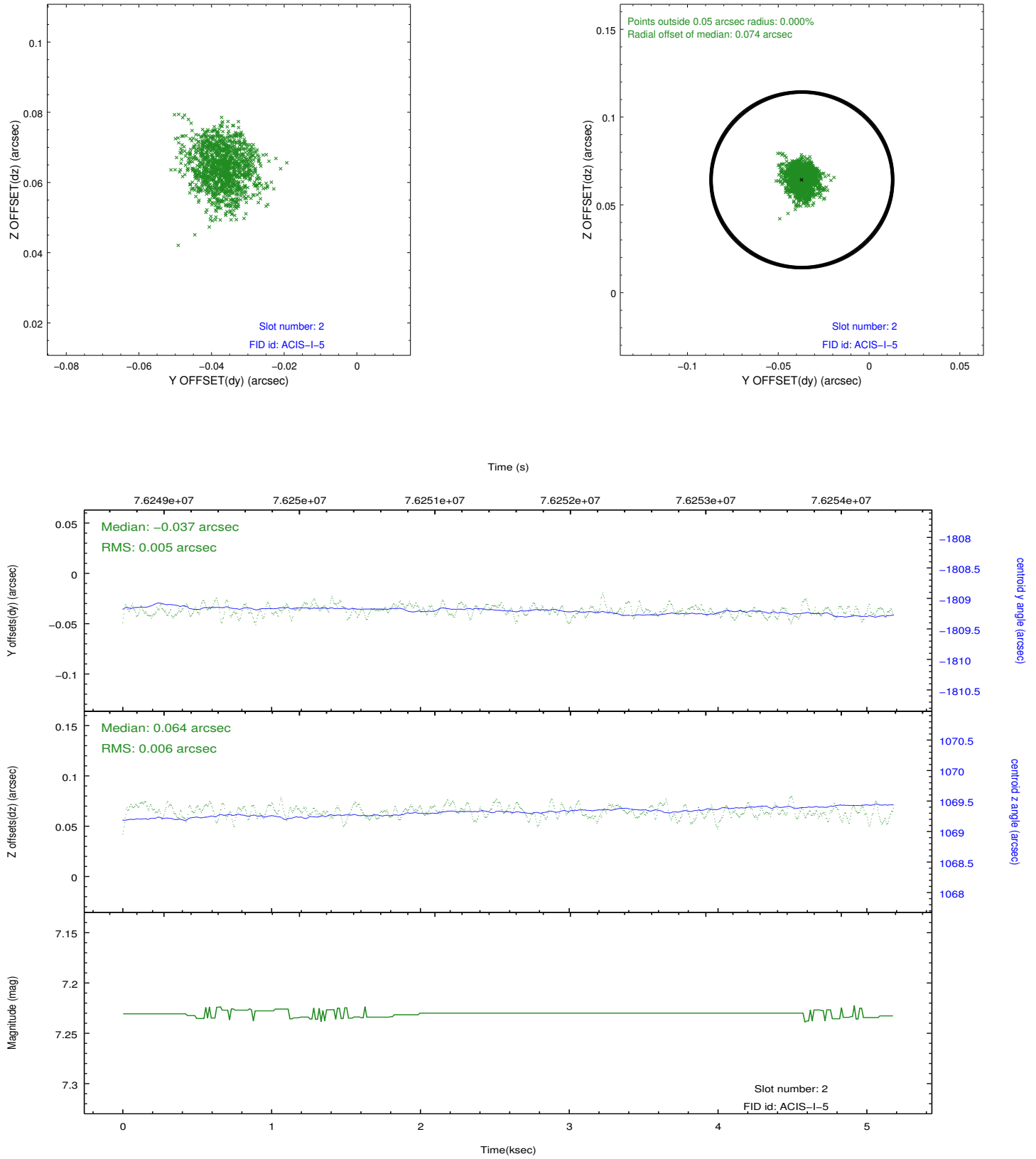
### 2.5.1 Slot 0



## 2.5.2 Slot 1



### 2.5.3 Slot 2



## A Summary

### A.1 Status

V&V Scientist	Jen Lauer
V&V Date (YYYY-MM-DD)	2012.08.31
V&V Edition	1
V&V Disposition and Status	OK
V&V Charge Time	4.934

### A.2 Comments