

# V&V Reference Report

## L2 ASCDS Version : 7.6.10

Observation 924 - L2 Version 001  
Chandra X-Ray Center

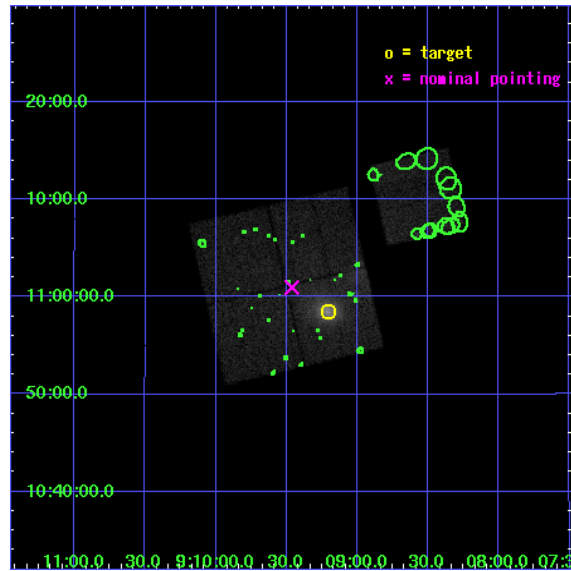
L2 Processing Date : Jun 9 2007

## Contents

<b>1</b>	<b>Front</b>	<b>2</b>
<b>2</b>	<b>OBI</b>	<b>3</b>
2.1	OBI . . . . .	3
2.1.1	Images . . . . .	3
2.1.2	Bias . . . . .	3
2.1.3	Parameters . . . . .	4
2.1.4	Events . . . . .	4
2.2	Compared Parameters . . . . .	5
2.3	Aspect . . . . .	6
2.4	Star Slots . . . . .	9
2.4.1	Slot 3 . . . . .	9
2.4.2	Slot 4 . . . . .	10
2.4.3	Slot 5 . . . . .	11
2.4.4	Slot 6 . . . . .	12
2.4.5	Slot 7 . . . . .	13
2.5	FID Slots . . . . .	14
2.5.1	Slot 0 . . . . .	14
2.5.2	Slot 1 . . . . .	15
2.5.3	Slot 2 . . . . .	16
<b>3</b>	<b>Point Sources</b>	<b>17</b>
<b>A</b>	<b>Summary</b>	<b>18</b>
A.1	Status . . . . .	18
A.2	Comments . . . . .	18

# 1 Front

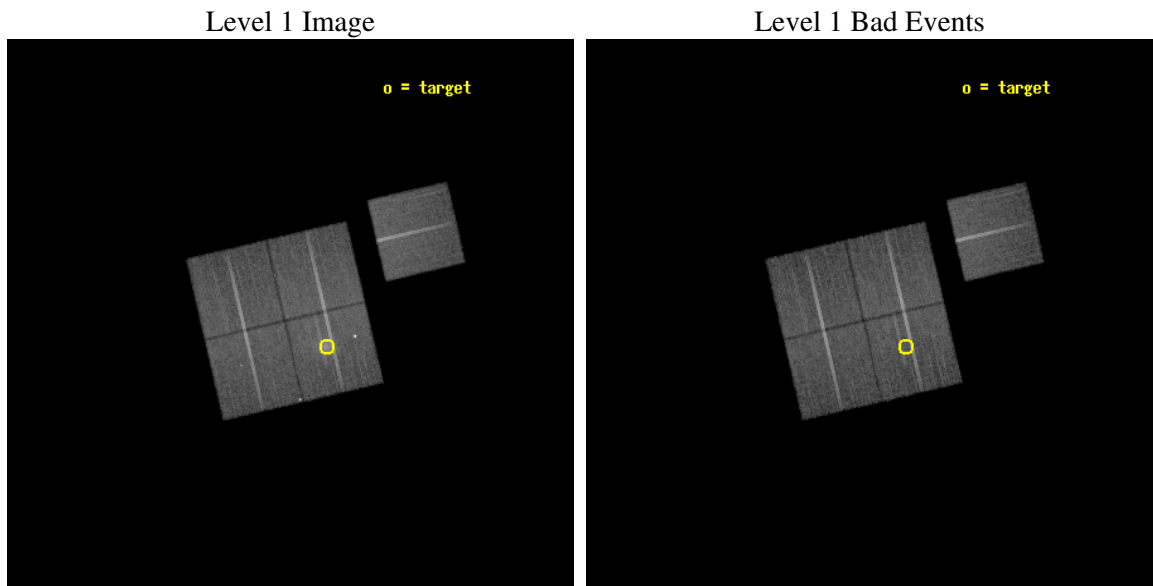
seq_num	800100
obs_id	924
title	CLUSTER MASSES AT MODERATE REDSHIFTS
observer	Dr. Erica Ellingson
object	MS 0906.5+1110
dtcycle	0
cycle	P
ra_targ	137.30142
dec_targ	10.97517
ra_nom	137.36564766606
dec_nom	11.01622965203
roll_nom	76.888893428692
revision	2
ontime	30134.400028065
livetime	29752.820110152
ontime0	30124.677267045
ontime1	30127.918057725
ontime2	30127.918077663
ontime3	30134.400028065
ontime6	30134.400028065
l2events	119556



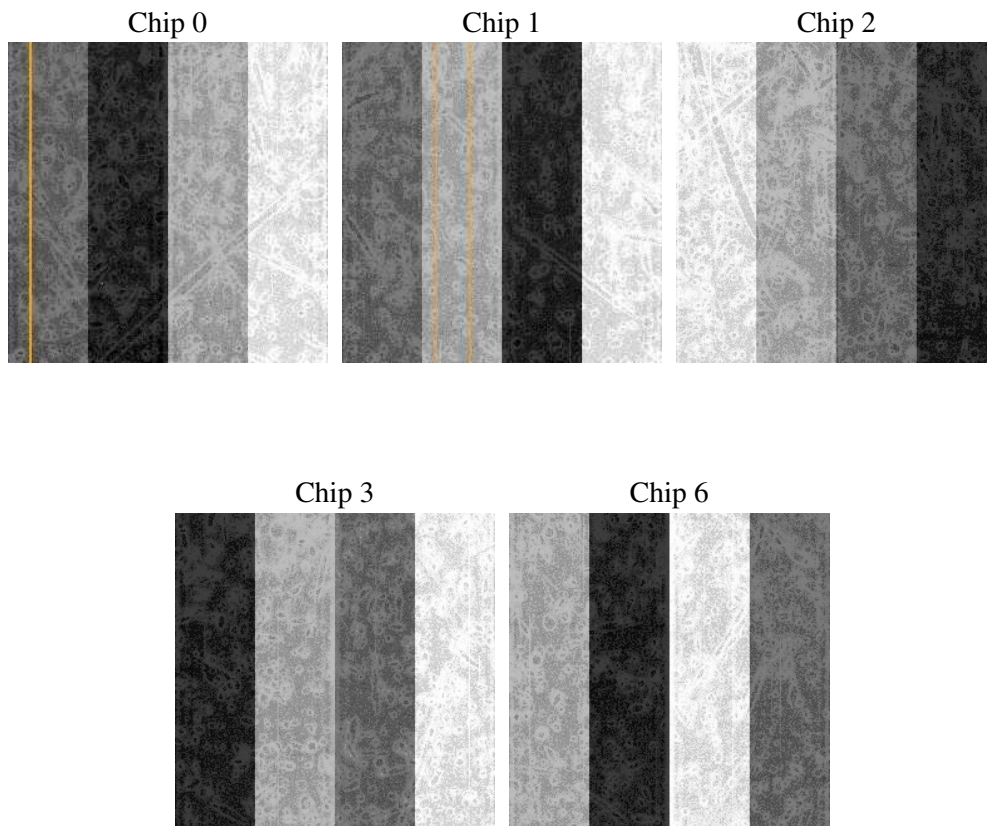
## 2 OBI

### 2.1 OBI

#### 2.1.1 Images



#### 2.1.2 Bias



### 2.1.3 Parameters

obi_num	0
ascdsver	7.6.10
caldbver	3.4.0
date	2007-06-09T16:36:57
revision	2

sched_exp_time	30000.000000
ontime	30134.400028065
ontime0	30124.677267045
ontime1	30127.918057725
ontime2	30127.918077663
ontime3	30134.400028065
ontime6	30134.400028065
l1events	925228

### 2.1.4 Events

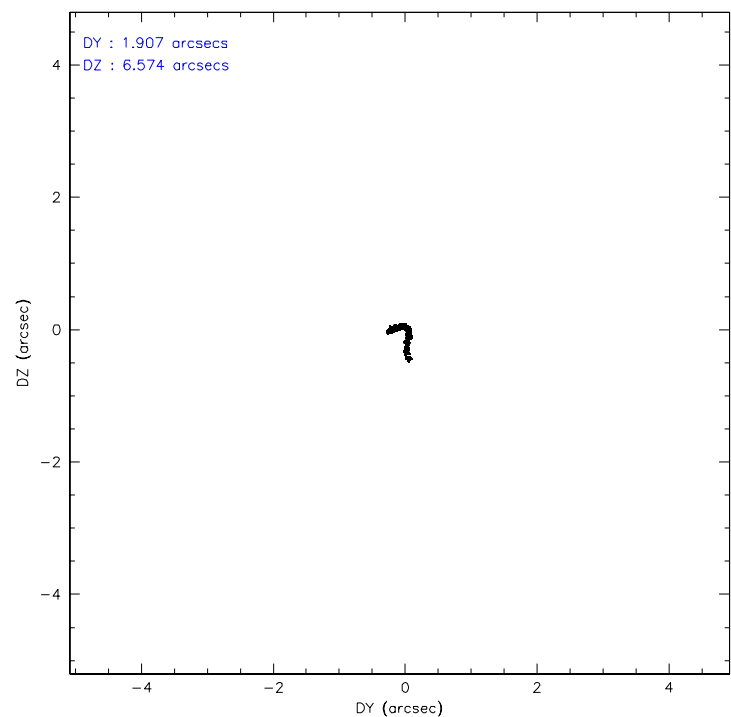
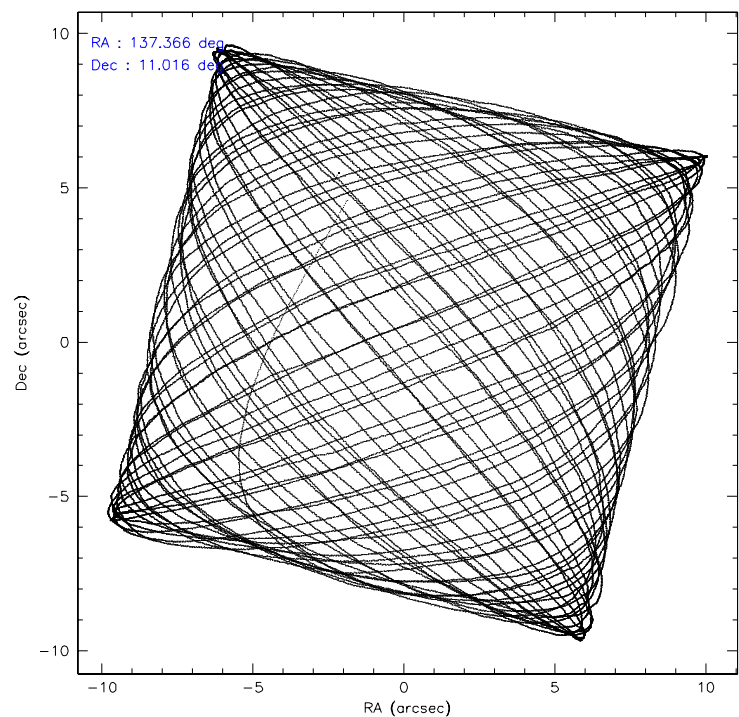
	ccd 0	ccd 1	ccd 2	ccd 3	ccd 6
level 1 events	171220	174426	187969	209111	182502
rejected events	150119	149549	165650	162056	162107
rejected %	87%	85%	88%	77%	88%

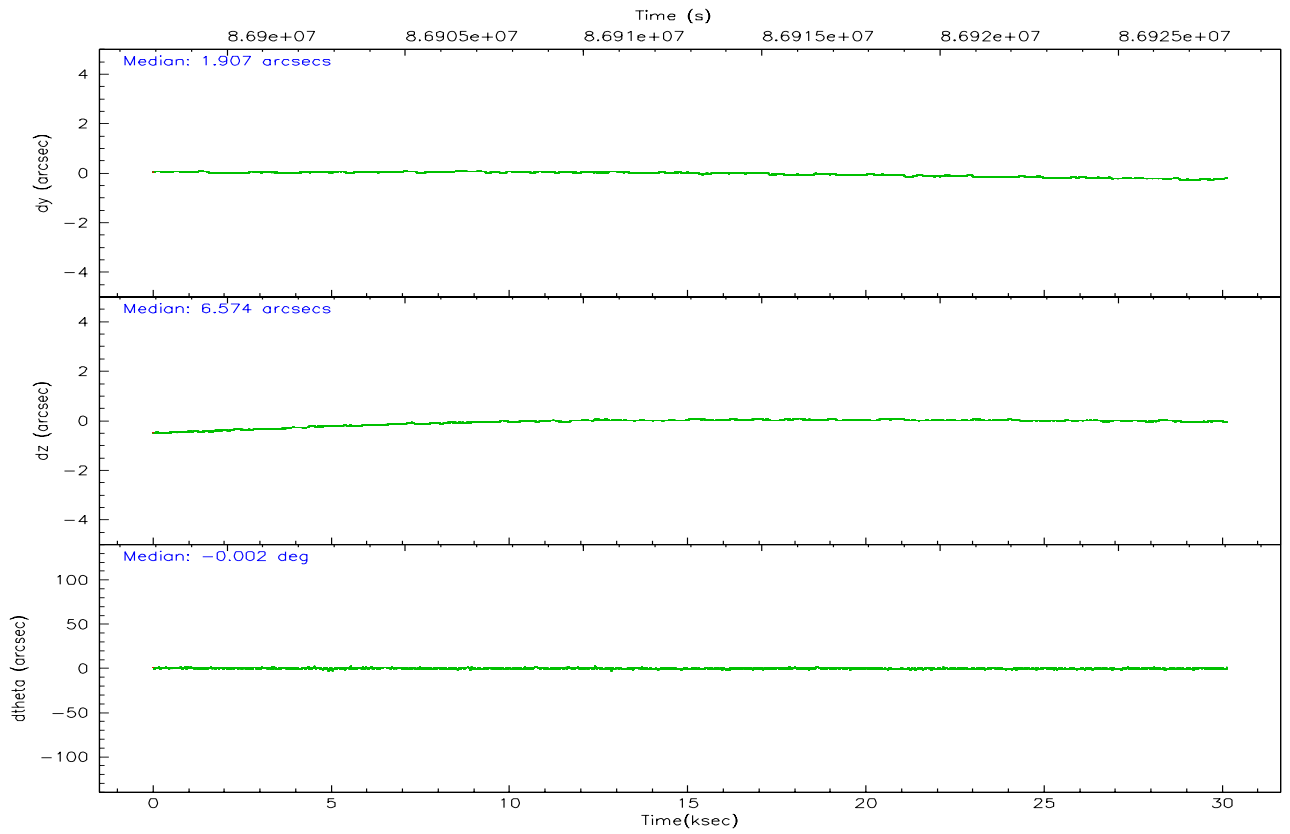
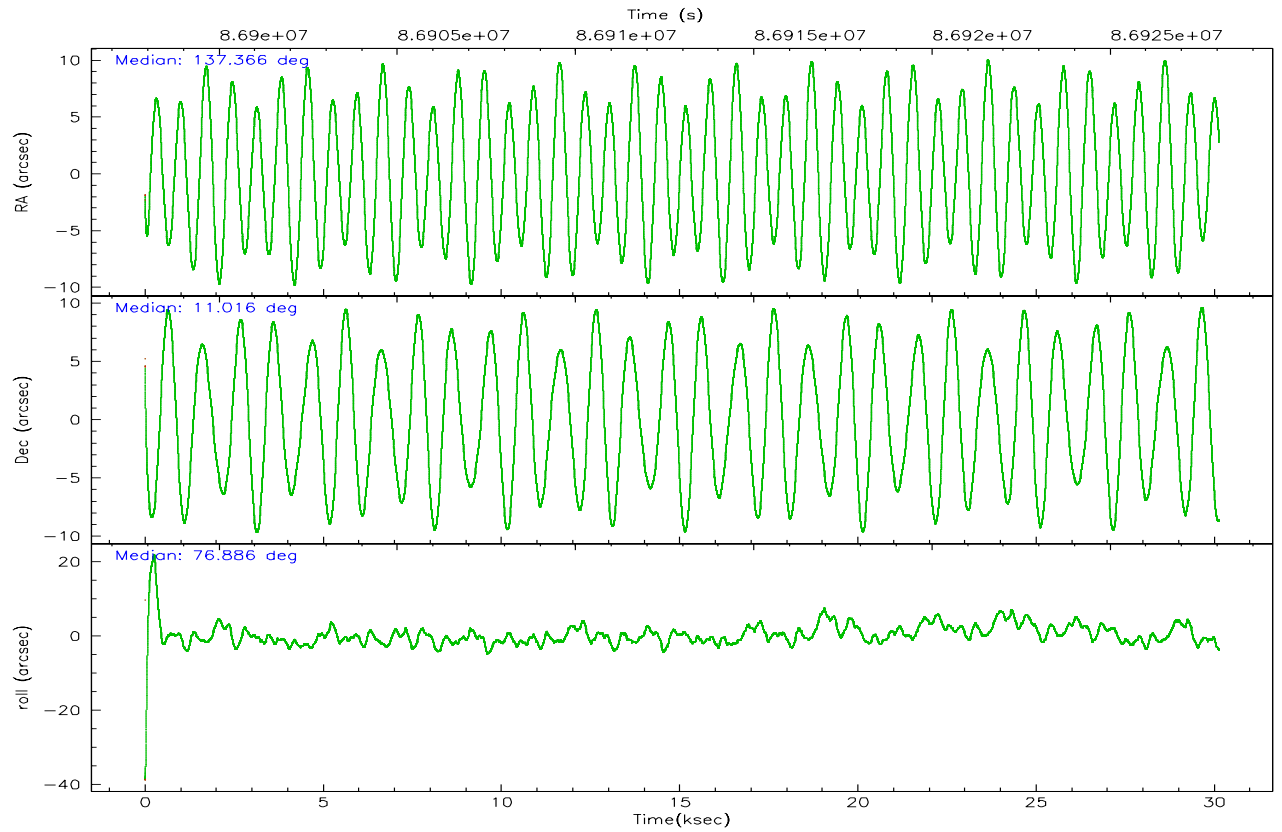
	ccd 0	ccd 1	ccd 2	ccd 3	ccd 6
grade 0 events	9248	11504	10485	30737	8306
	5%	6%	5%	14%	4%
grade 1 events	75	86	83	213	73
	0%	0%	0%	0%	0%
grade 2 events	4236	4647	4452	6470	3884
	2%	2%	2%	3%	2%
grade 3 events	2132	2346	1905	2843	2137
	1%	1%	1%	1%	1%
grade 4 events	1932	2331	1969	2736	2094
	1%	1%	1%	1%	1%
grade 5 events	6314	6750	5936	6845	7289
	3%	3%	3%	3%	3%
grade 6 events	3562	4062	3516	4282	3980
	2%	2%	1%	2%	2%
grade 7 events	143721	142700	159623	154985	154739
	83%	81%	84%	74%	84%

## 2.2 Compared Parameters

Parameter	Planned	Actual	Parameter	Planned	Actual
Instrument	ACIS	ACIS	Obspar format version number	6	6
Detector	ACIS-01236	ACIS-01236	Obspar file type	PREDICTED	ACTUAL
Grating	NONE	NONE	Obspar update status	NONE	UPDATED
Data mode	VFAINT	VFAINT	Number of optional ACIS chips dropped	0	0
Observation mode	POINTING	POINTING	On-chip summing requested	N	N
Pointing RA	137.373707	137.3656476660573	Subarray requested	NONE	NONE
Pointing Dec	10.989884	11.01622965202993	Alternating exposures requested	N	N
Pointing Roll	76.678697	76.88889342869234	Primary exposure time	3.200000	3.2
SIM focus pos (mm)	-0.782348	-0.7809083437167272			
SIM defocus (mm)	0	0.001439871863259334			
SIM translation stage pos (mm)	-233.592463	-233.5874344608287			
SIM translation stage offset (mm)	0	-0.005018542100998502			
Observation start time	86898058.184000	86897069.629784			
Observation start date	2000-10-02T18:19:54	2000-10-02T18:04:29			
Observation end time	86928058.184000	86928867.69348399			
Observation end date	2000-10-03T02:39:54	2000-10-03T02:54:27			
Read mode	TIMED	TIMED			

2.3 Aspect



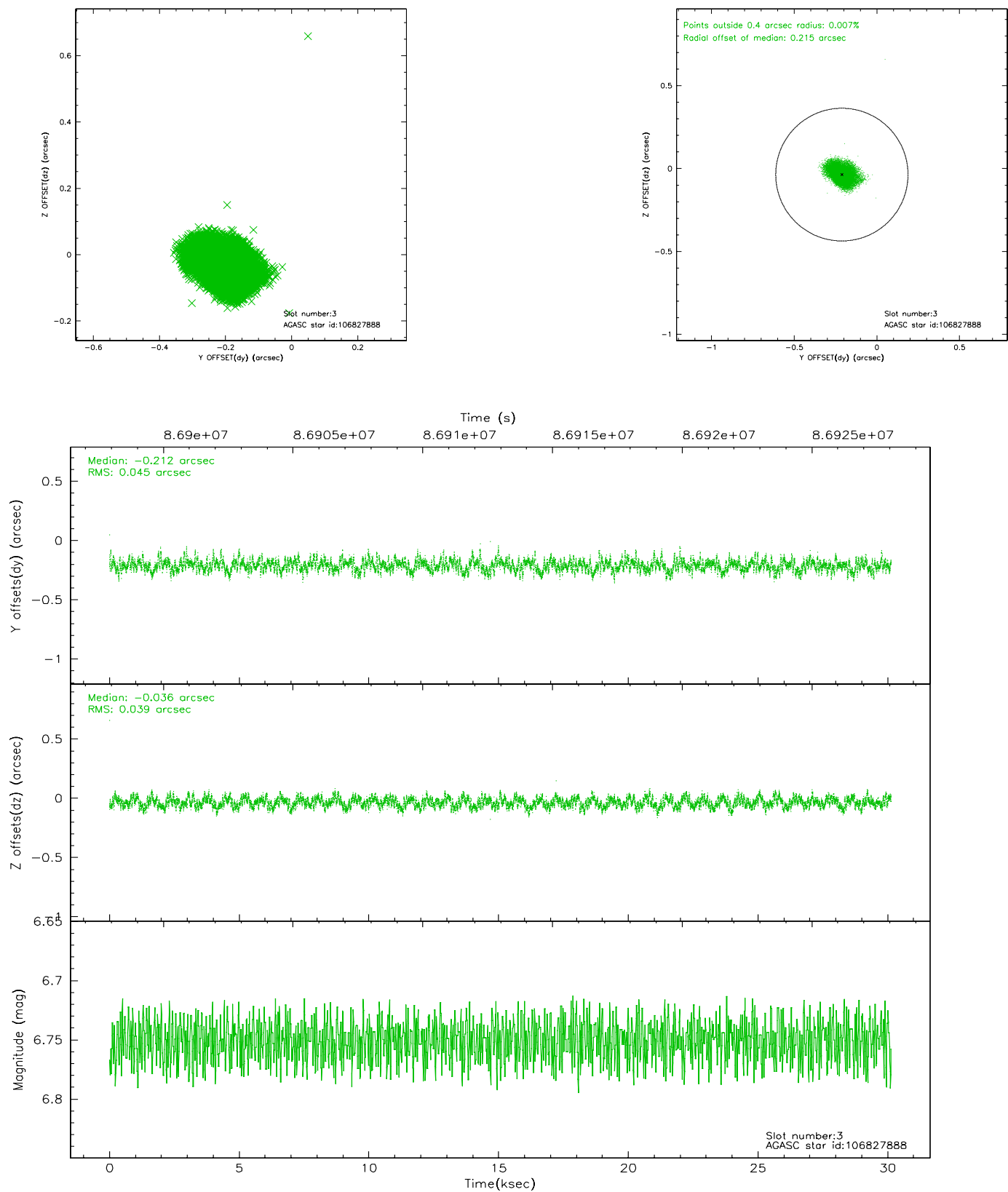


### Slot Statistics

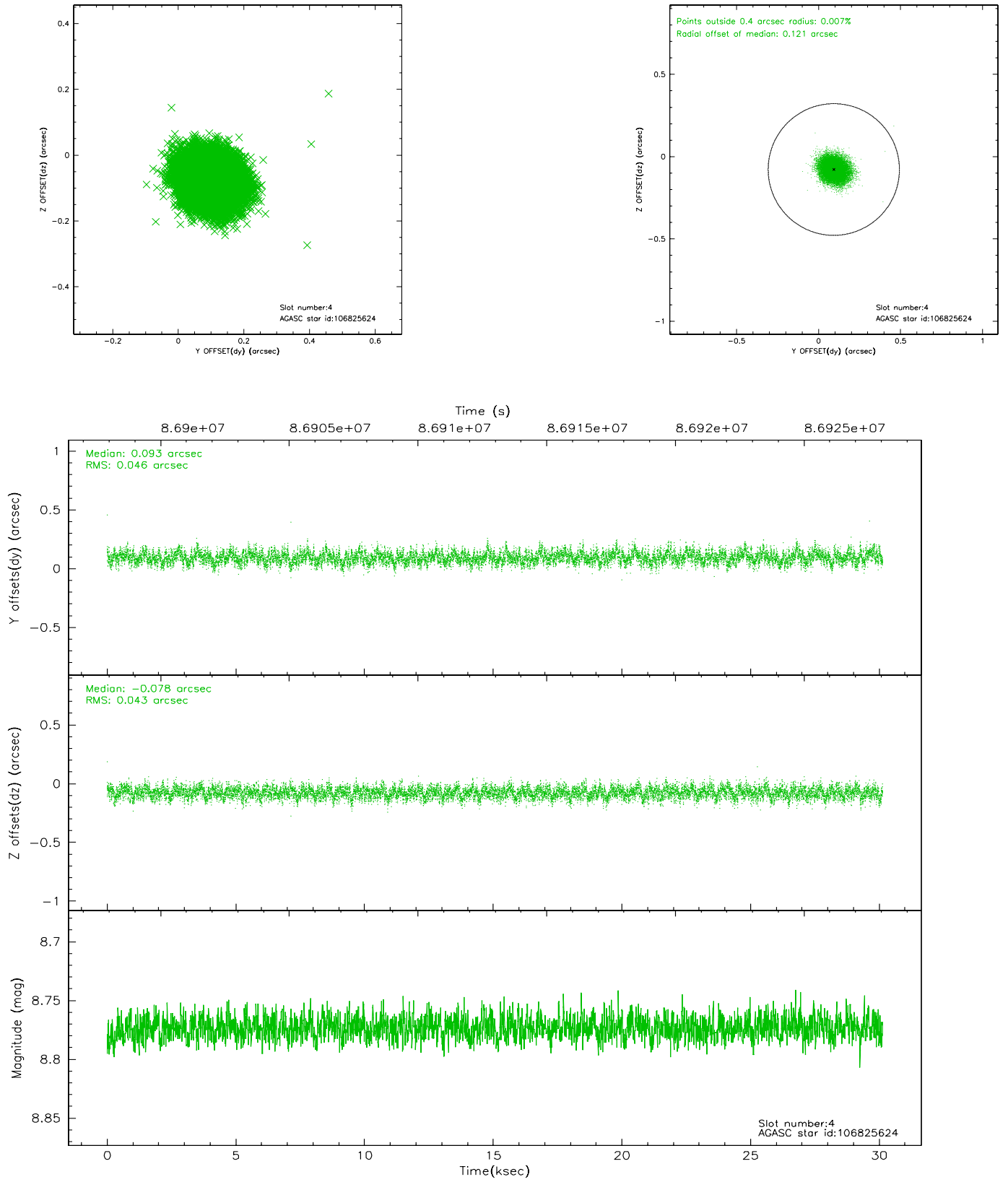
slot	status	id	mag	n_pts	med_dy	med_dz	dr1	dr2	ra	dec	mean_y	mean_z
0	FID	ACIS-I-2	7.16	7351	-0.035	-0.052	0.009	0.015	0.000000	0.000000	-756.25	-836.31
1	FID	ACIS-I-4	7.18	7351	-0.072	0.042	0.008	0.015	0.000000	0.000000	2157.74	1069.94
2	FID	ACIS-I-5	7.23	7352	0.007	0.079	0.011	0.018	0.000000	0.000000	-1809.94	1067.89
3	GUIDE	106827888	6.75	14702	-0.212	-0.036	0.063	0.102	137.443435	11.564377	2069.44	237.42
4	GUIDE	106825624	8.77	14699	0.093	-0.078	0.068	0.108	137.293195	10.821701	-654.09	137.39
5	GUIDE	106826608	8.93	14697	-0.098	-0.079	0.088	0.139	136.887374	11.444072	1197.36	2047.02
6	GUIDE	106825944	9.29	14694	0.095	0.166	0.078	0.124	137.716825	10.697762	-742.29	-1422.87
7	GUIDE	106827264	9.85	14657	0.124	0.029	0.101	0.168	137.059672	10.601302	-1616.21	759.12

## 2.4 Star Slots

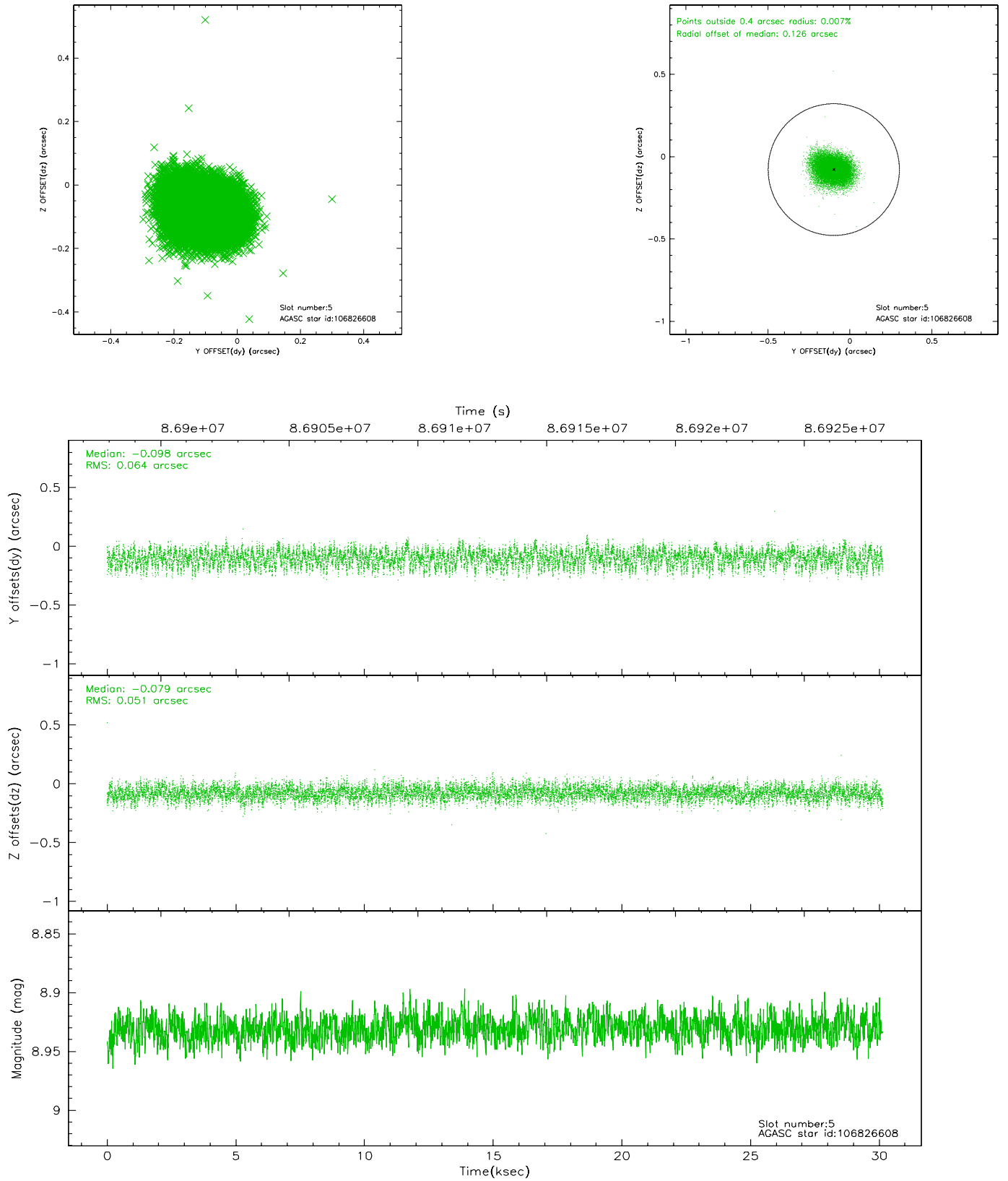
### 2.4.1 Slot 3



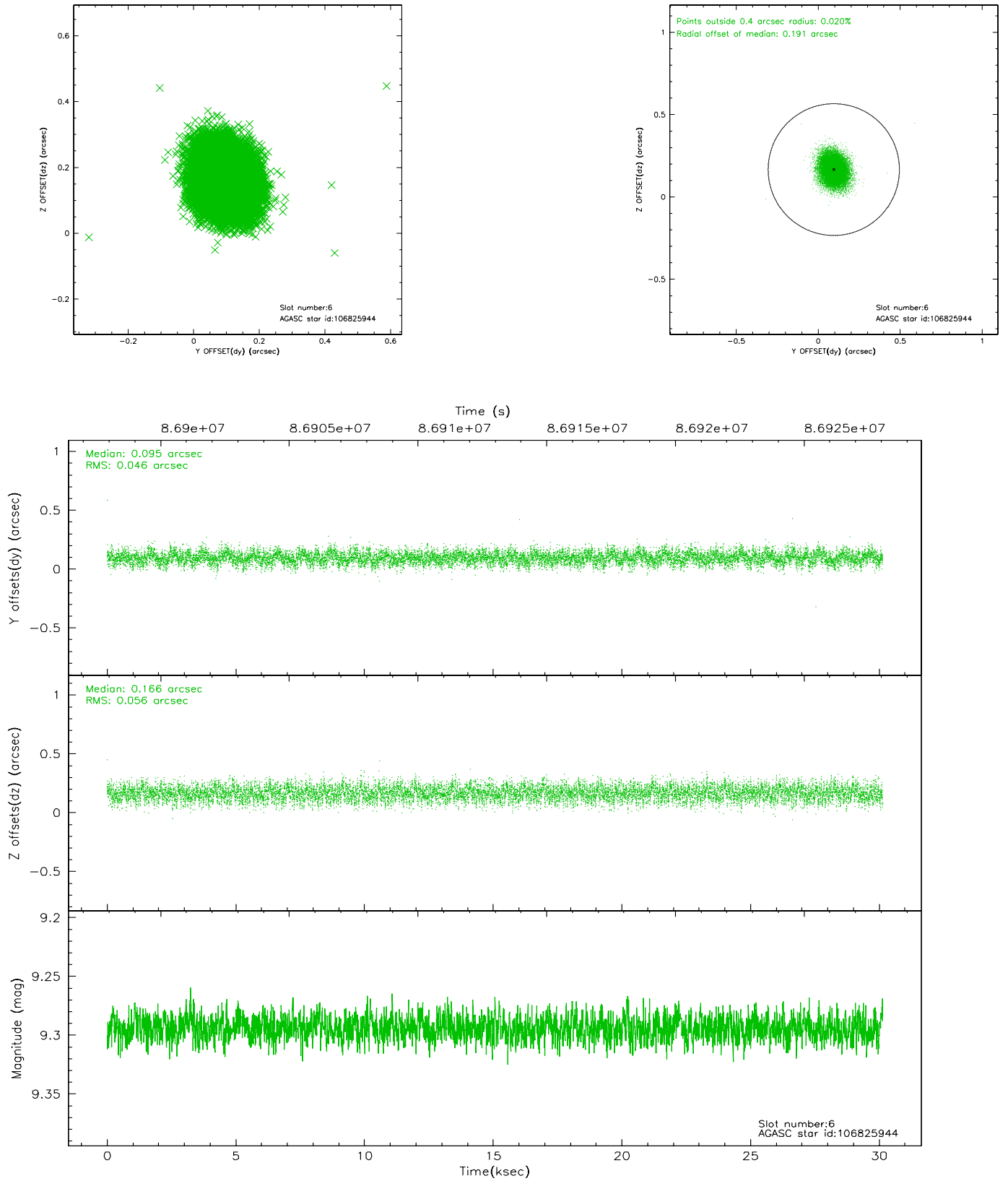
## 2.4.2 Slot 4



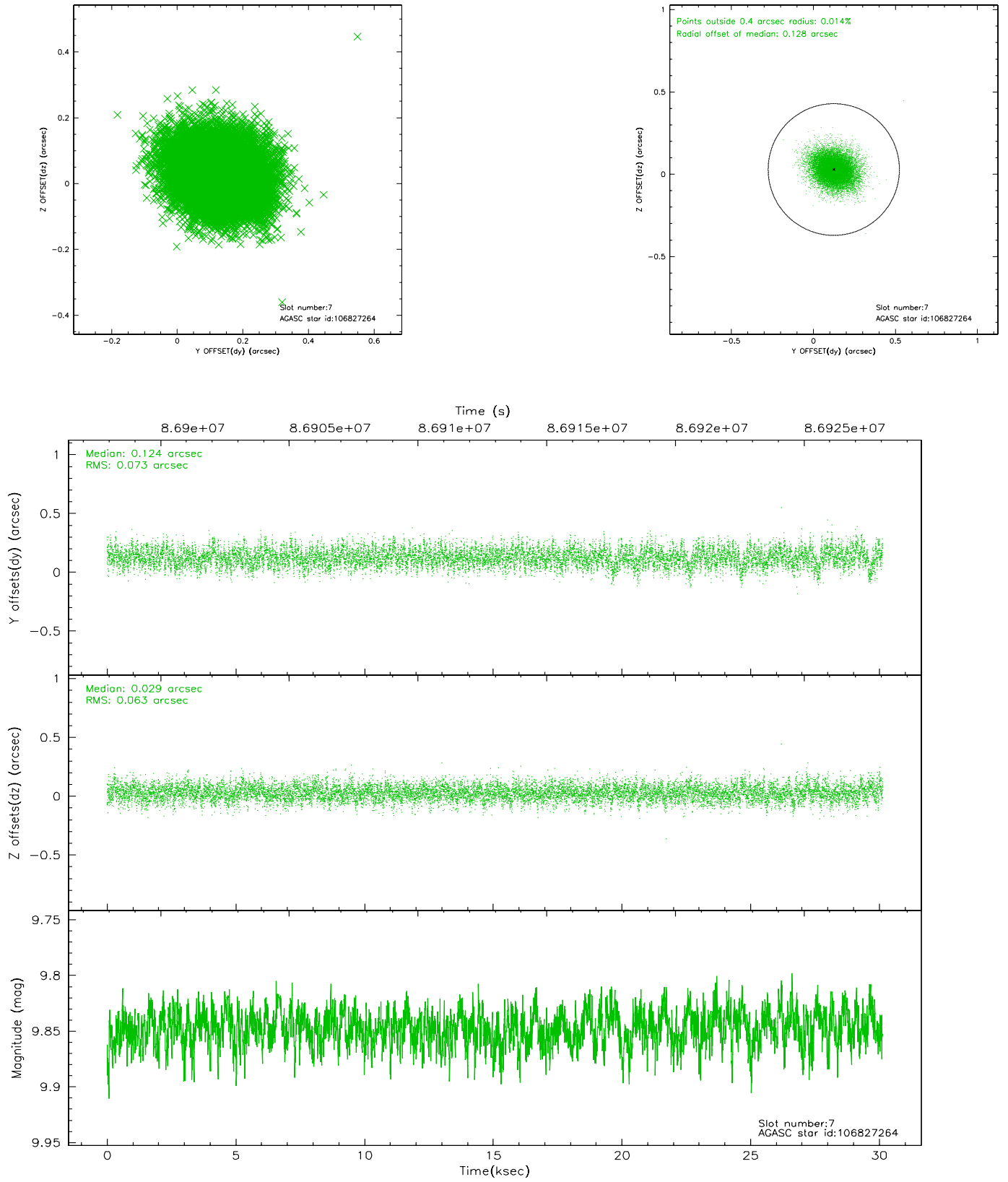
### 2.4.3 Slot 5



## 2.4.4 Slot 6

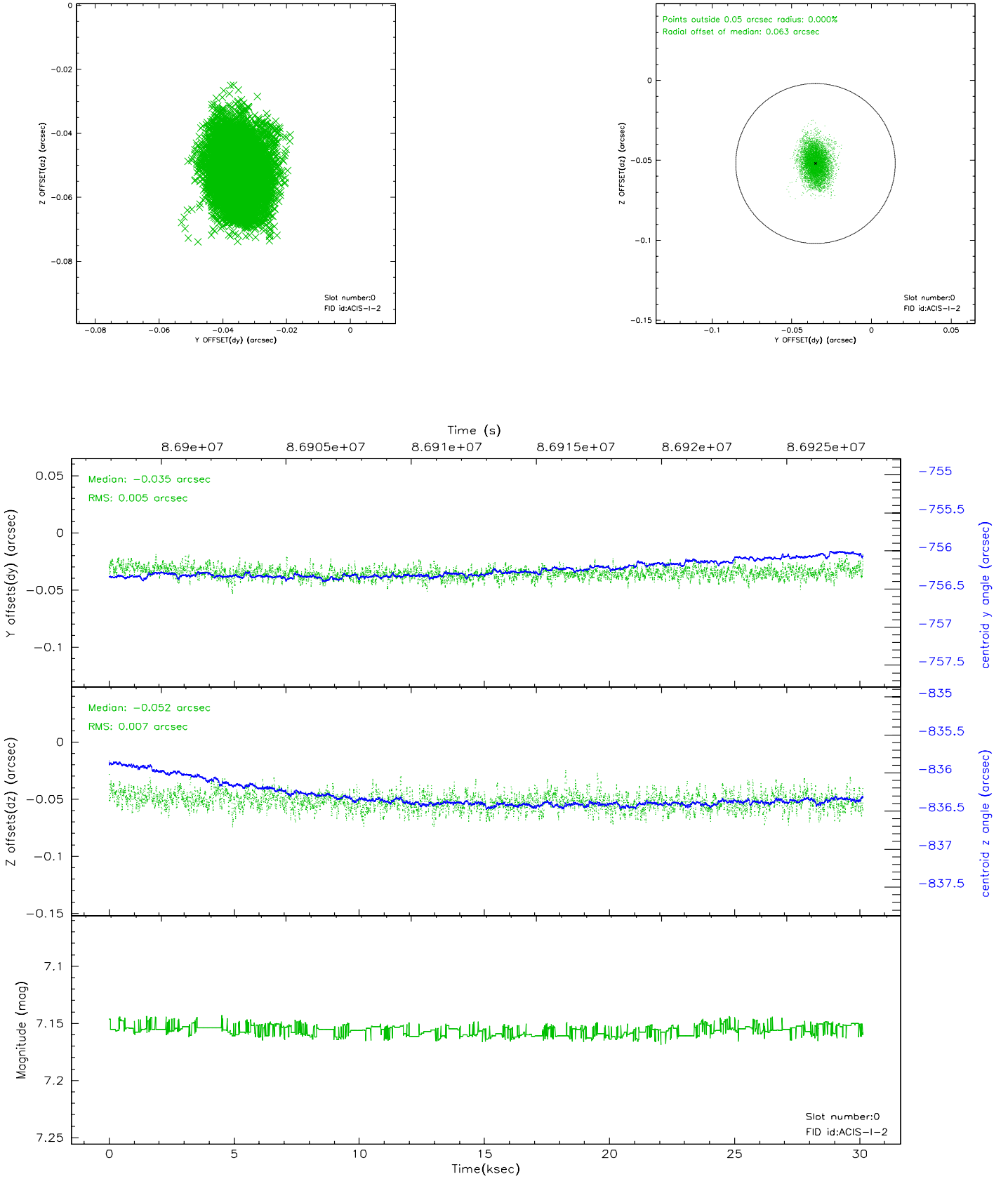


## 2.4.5 Slot 7

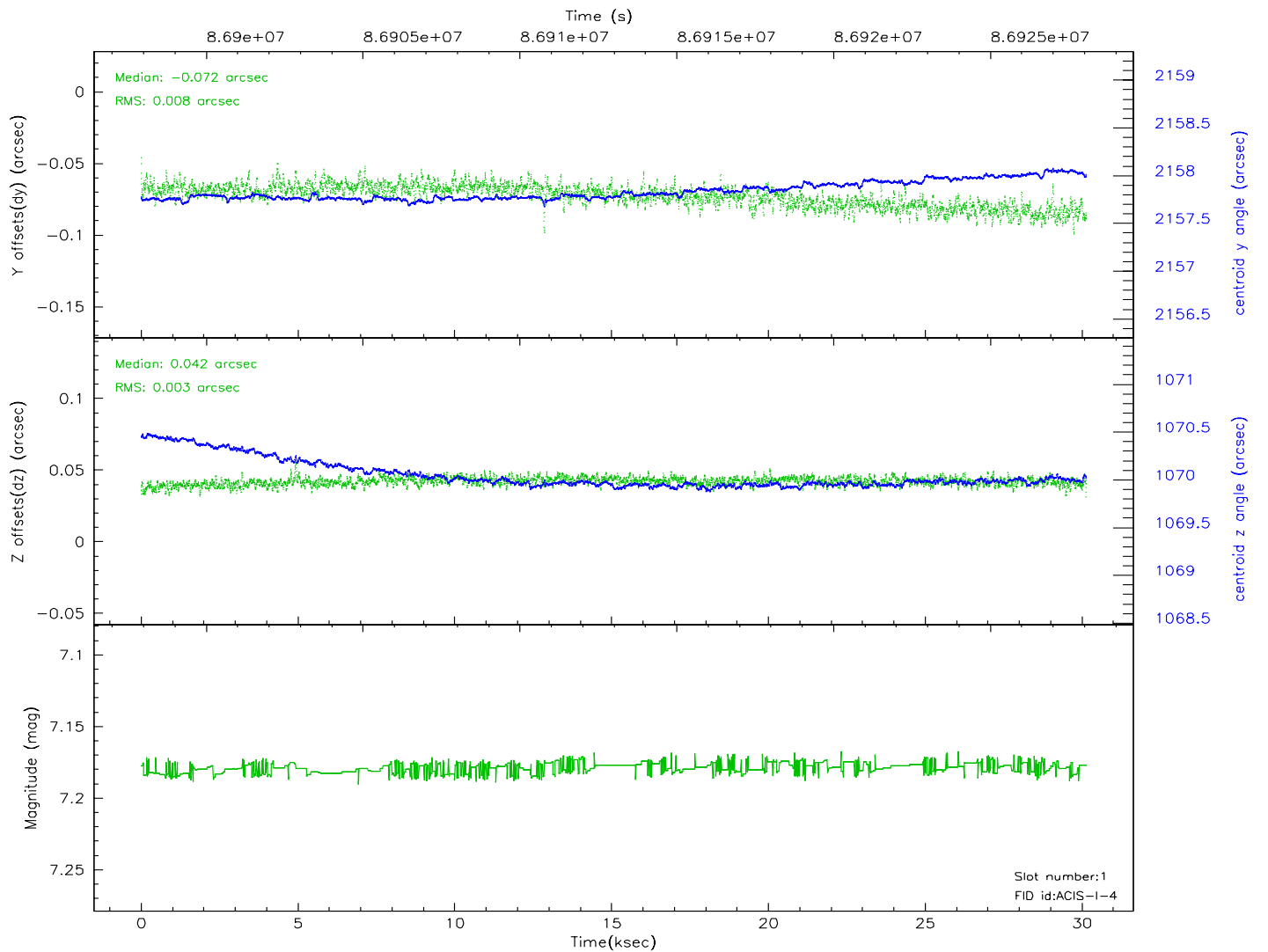
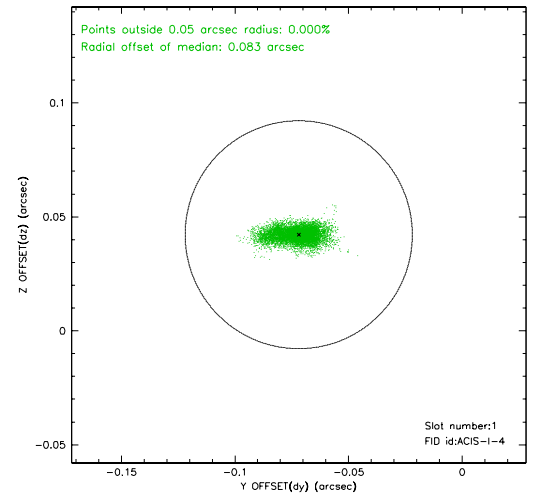
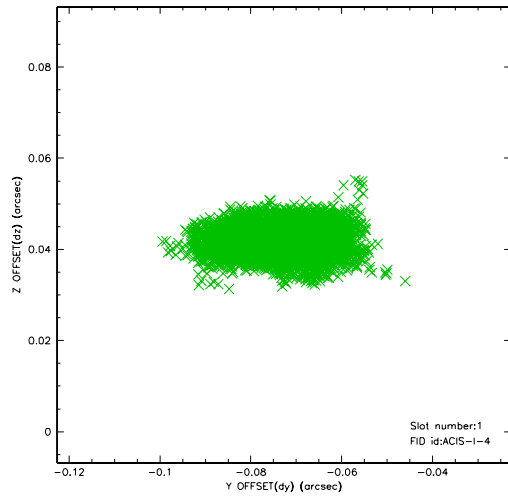


## 2.5 FID Slots

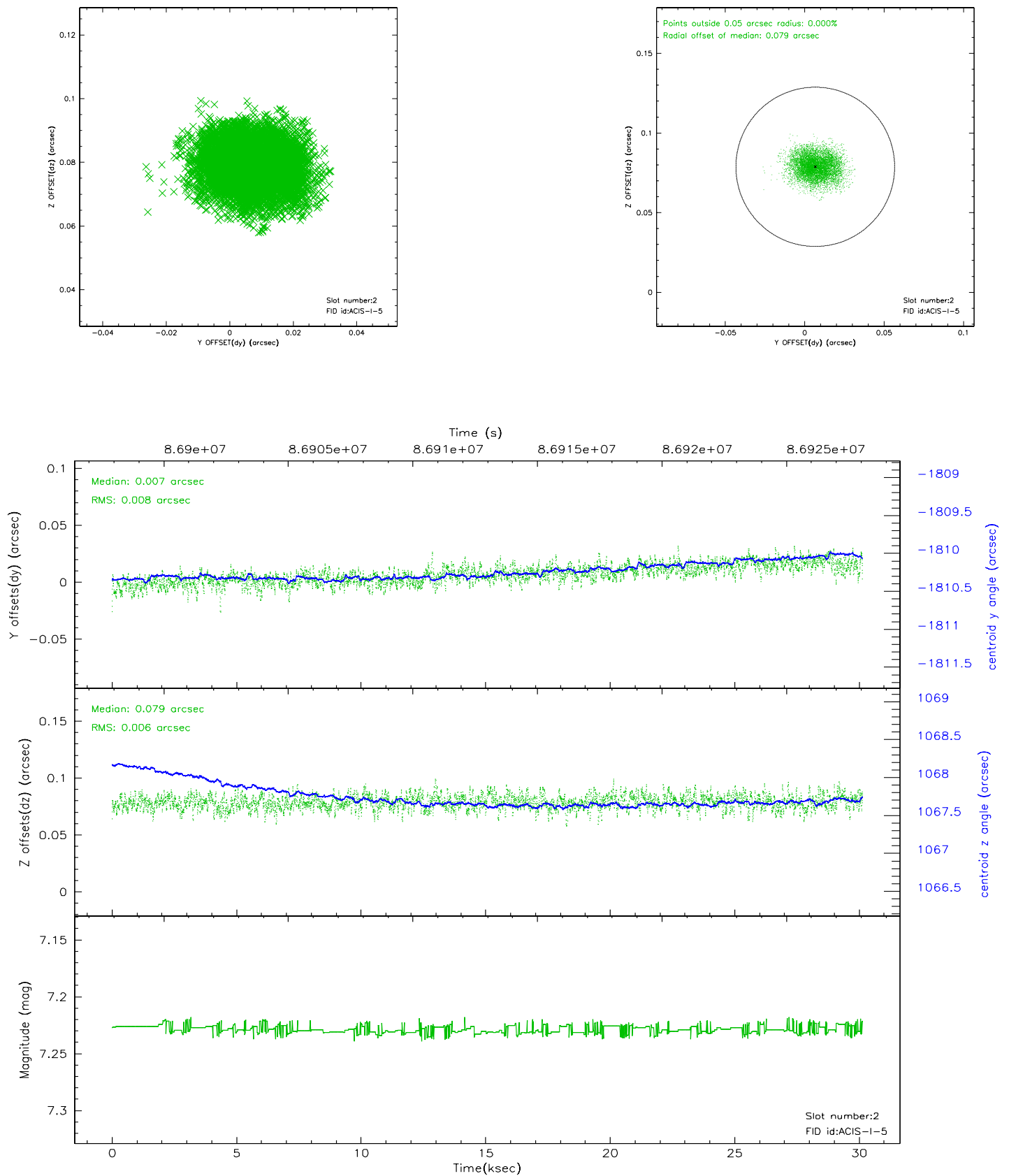
### 2.5.1 Slot 0



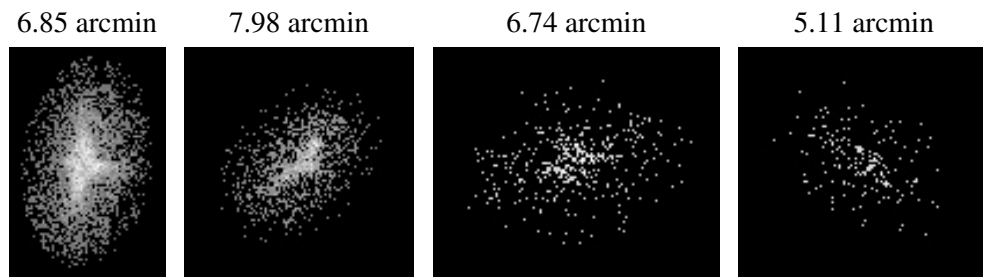
## 2.5.2 Slot 1



### 2.5.3 Slot 2



### 3 Point Sources



## A Summary

### A.1 Status

V&V Scientist	Beth Sundheim
V&V Date (YYYY-MM-DD)	2007.06.11
V&V Edition	1
V&V Disposition and Status	OK
V&V Charge Time	30.134

### A.2 Comments