

# V&V Reference Report

## L2 ASCDS Version : 8.4.5

Observation 899 - L2 Version 6  
Chandra X-Ray Center

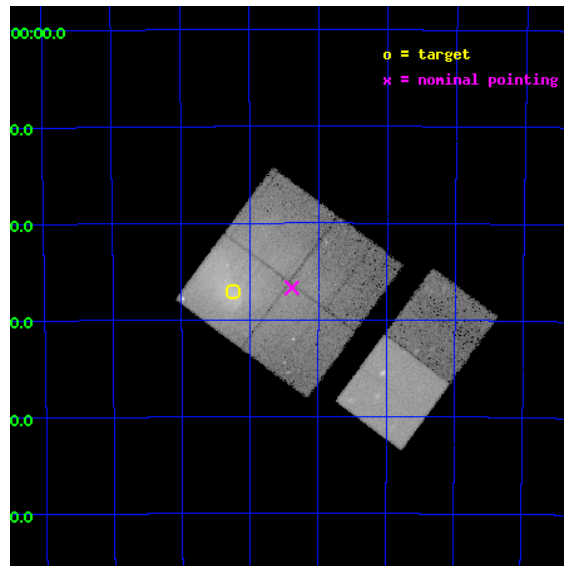
L2 Processing Date : Sep 6 2012

## Contents

<b>1</b>	<b>Front</b>	<b>2</b>
<b>2</b>	<b>OBI</b>	<b>3</b>
2.1	OBI . . . . .	3
2.1.1	Images . . . . .	3
2.1.2	Bias . . . . .	3
2.1.3	Parameters . . . . .	4
2.1.4	Events . . . . .	4
2.2	Compared Parameters . . . . .	5
2.3	Aspect . . . . .	6
2.4	Star Slots . . . . .	9
2.4.1	Slot 4 . . . . .	9
2.4.2	Slot 5 . . . . .	10
2.4.3	Slot 6 . . . . .	11
2.4.4	Slot 7 . . . . .	12
2.5	FID Slots . . . . .	13
2.5.1	Slot 0 . . . . .	13
2.5.2	Slot 1 . . . . .	14
2.5.3	Slot 2 . . . . .	15
<b>A</b>	<b>Summary</b>	<b>16</b>
A.1	Status . . . . .	16
A.2	Comments . . . . .	16

# 1 Front

seq_num	800075	Sequence number
obs_id	899	Observation id
title	A3266: LABORATORY FOR THE STUDY OF CLUSTER MERGERS	Proposal title
observer	Professor Mark Henriksen	Principal investigator
object	ABELL 3266	Source name
dtcycle	0	&#160
cycle	P	events from which exps? Prim/Second/Both
ra_targ	67.812917	Observer's specified target RA [deg]
dec_targ	-61.451111	Observer's specified target Dec [deg]
ra_nom	67.596446918072	Nominal RA [deg]
dec_nom	-61.444997344211	Nominal Dec [deg]
roll_nom	126.43632530166	Nominal Roll [deg]
revision	6	Processing version of data
ontime	30134.154146984	Sum of GTIs [s]
livetime	29752.577342566	Livetime [s]
ontime0	30140.636157185	Sum of GTIs [s]
ontime1	30134.154146984	Sum of GTIs [s]
ontime2	30140.636097372	Sum of GTIs [s]
ontime3	30140.636077434	Sum of GTIs [s]
ontime6	30147.118077666	Sum of GTIs [s]
ontime7	30147.118077666	Sum of GTIs [s]
l2events	322943	Number of level 2 events

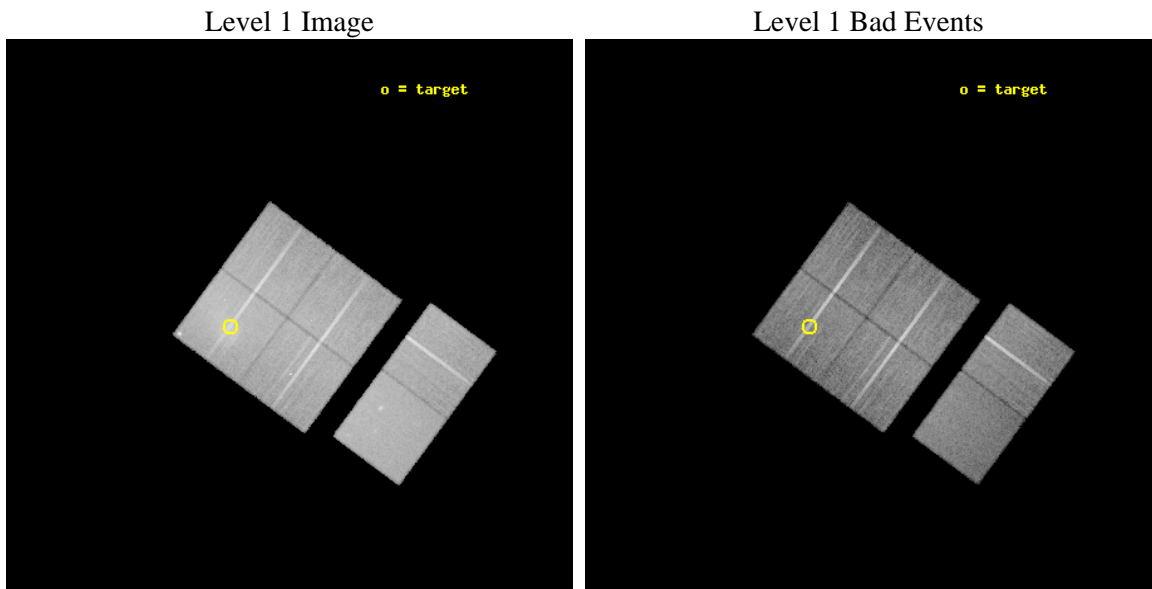




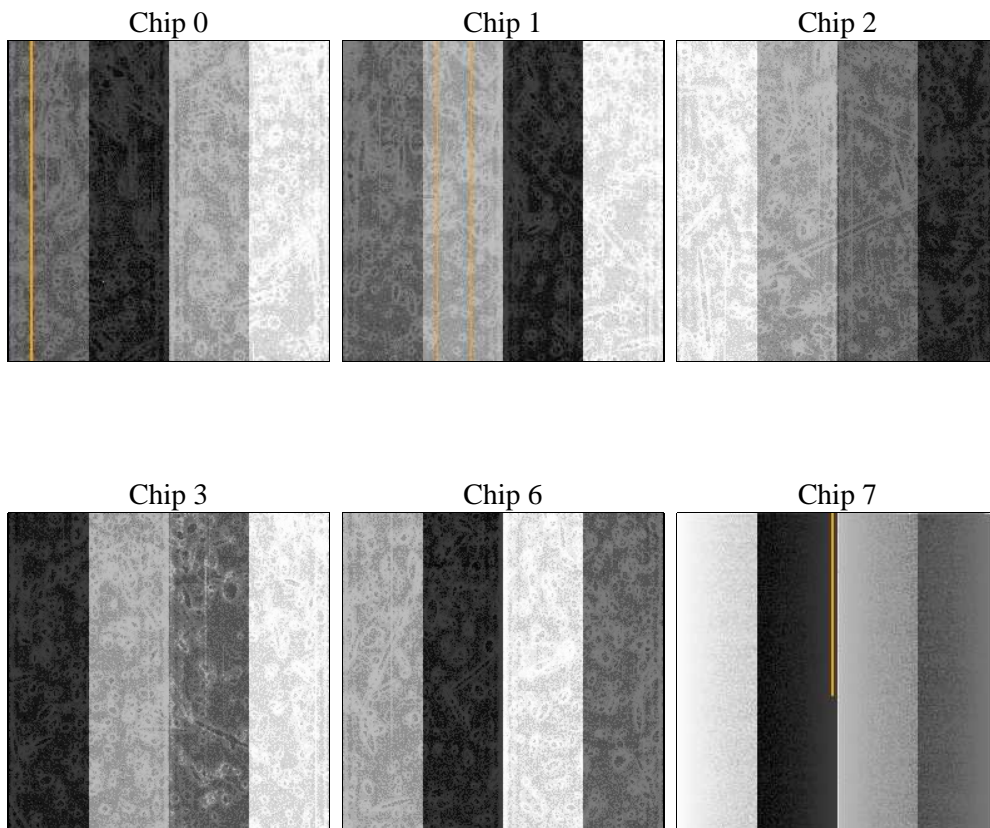
## 2 OBI

### 2.1 OBI

#### 2.1.1 Images



#### 2.1.2 Bias



### 2.1.3 Parameters

obi_num	0	Obi number	sched_exp_time	30000.000000	[s] Scheduled observation exposure time
ascdsver	8.4.5	Processing system revision	ontime	30134.154146984	Sum of GTIs [s]
caldsver	4.5.1.1	&#160	ontime0	30140.636157185	Sum of GTIs [s]
date	2012-09-06T21:24:55	Date and time of file creation	ontime1	30134.154146984	Sum of GTIs [s]
revision	6	Processing version of data	ontime2	30140.636097372	Sum of GTIs [s]
			ontime3	30140.636077434	Sum of GTIs [s]
			ontime6	30147.118077666	Sum of GTIs [s]
			ontime7	30147.118077666	Sum of GTIs [s]
			l1events	1215222	Number of level 1 events

### 2.1.4 Events

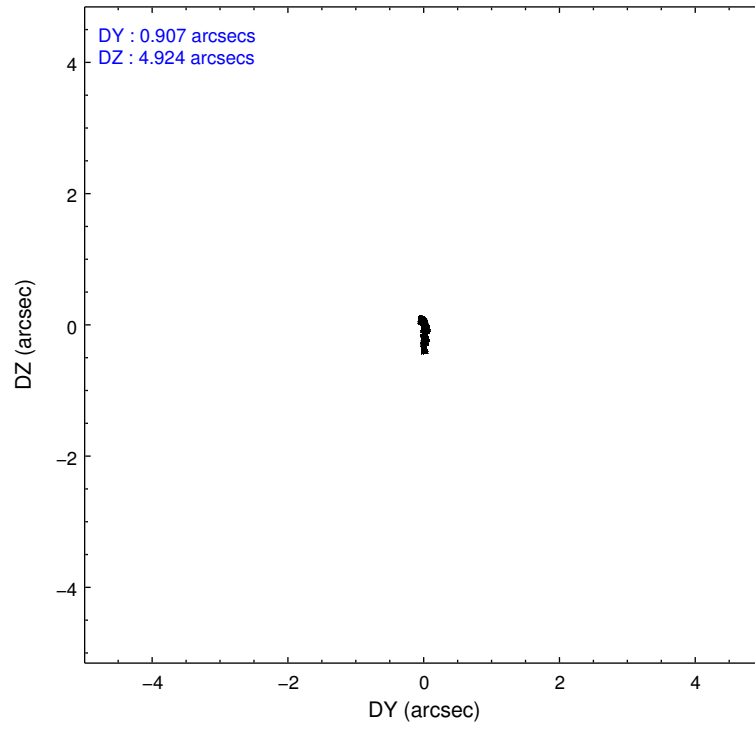
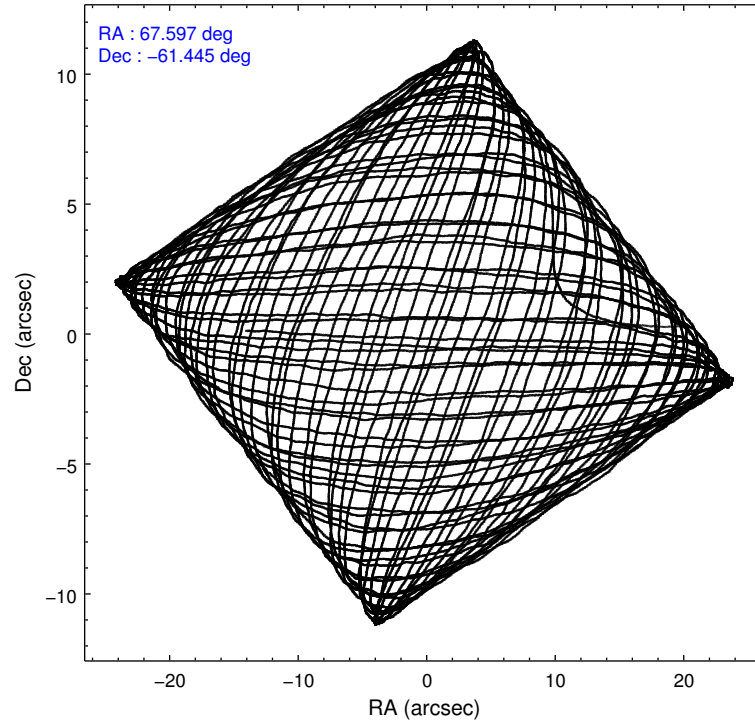
	ccd 0	ccd 1	ccd 2	ccd 3	ccd 6	ccd 7		ccd 0	ccd 1	ccd 2	ccd 3	ccd 6	ccd 7
level 1 events	186688	261069	187010	187697	180211	212547	grade 0 events	32523	88857	18054	22703	9324	9999
rejected events	137354	141987	156039	151188	158758	120836		17%	34%	9%	12%	5%	4%
rejected %	73%	54%	83%	80%	88%	56%	grade 1 events	162	340	123	118	88	193
								0%	0%	0%	0%	0%	0%
							grade 2 events	7187	13944	5179	5470	4173	18067
								3%	5%	2%	2%	2%	8%
							grade 3 events	2891	5067	2154	2398	1946	8502
								1%	1%	1%	1%	1%	4%
							grade 4 events	2633	5015	2077	2241	2063	8262
								1%	1%	1%	1%	1%	3%
							grade 5 events	5922	6524	5540	6326	7177	20133
								3%	2%	2%	3%	3%	9%
							grade 6 events	4154	6343	3537	3736	3969	46986
								2%	2%	1%	1%	2%	22%
							grade 7 events	131216	134979	150346	144705	151471	100405
								70%	51%	80%	77%	84%	47%

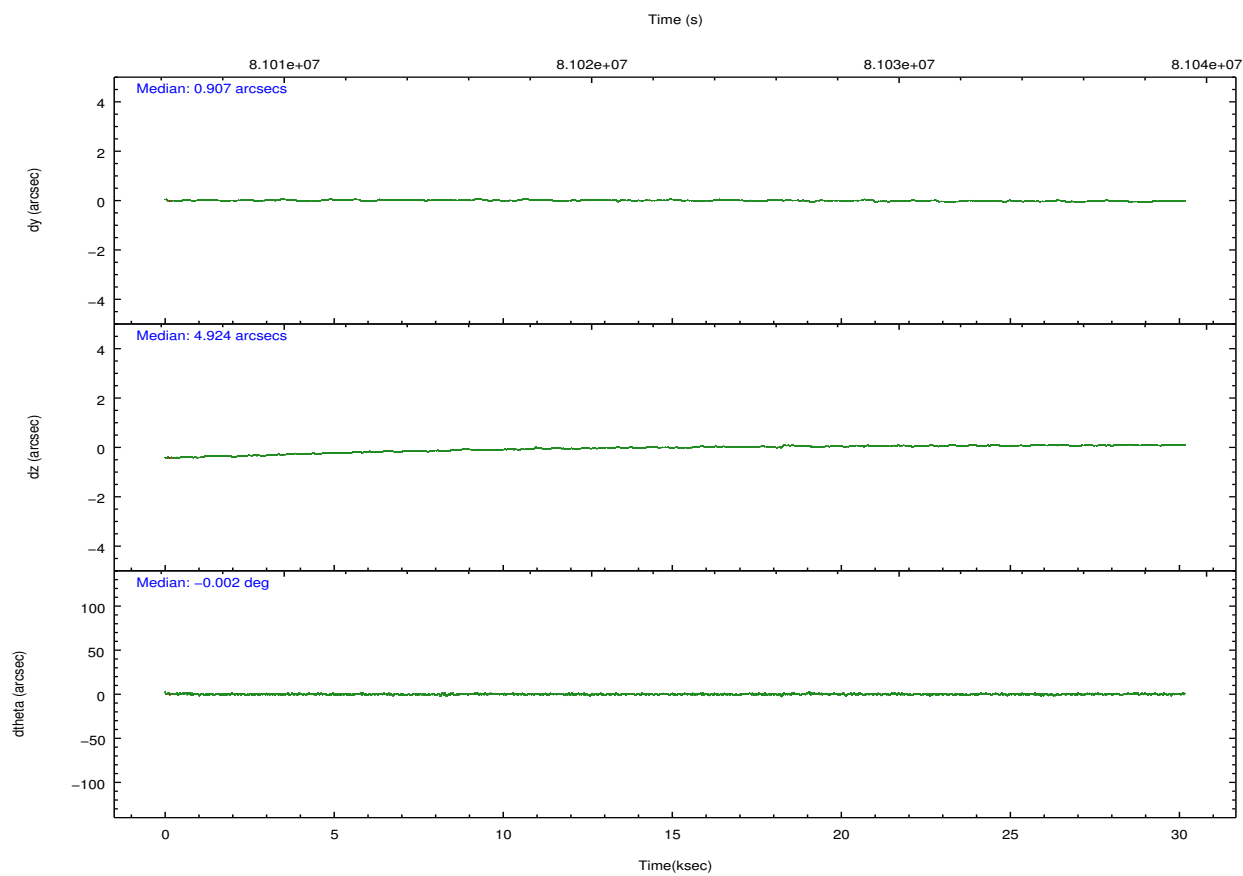
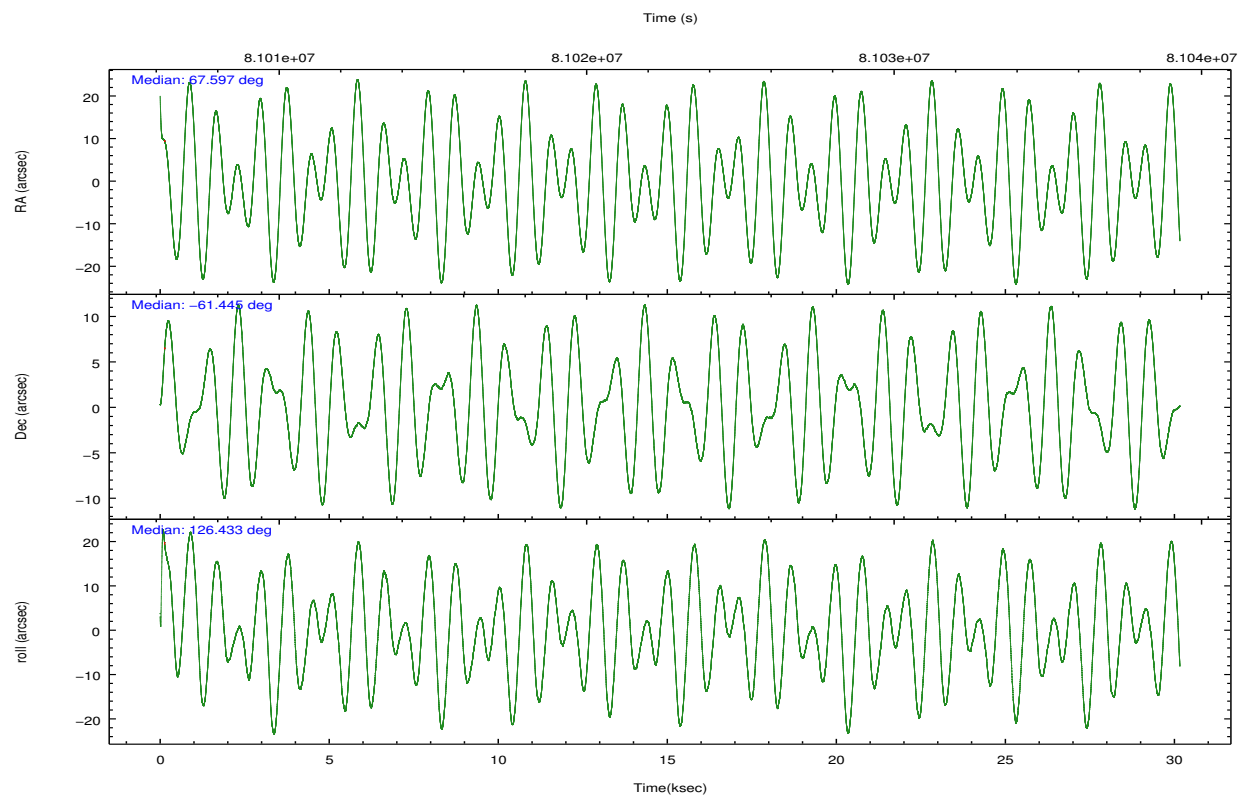
## 2.2 Compared Parameters

Parameter	Planned	Actual
Instrument	ACIS	ACIS
Detector	ACIS-012367	ACIS-012367
Grating	NONE	NONE
Data mode	VFAINT	VFAINT
Observation mode	POINTING	POINTING
[deg] Pointing RA	67.649175	67.59644691807156
[deg] Pointing Dec	-61.456121	-61.44499734421056
[deg] Pointing Roll	126.273970	126.4363253016612
[mm] SIM focus pos	-0.782348	-0.7809083437167272
[mm] SIM defocus	0	0.001439871863259334
[mm] SIM translation stage pos	-233.592463	-233.5874344608287
[mm] SIM translation stage offset	0	-0.005018542100998502
[s] Observation start time (MET)	81007796.184000	81006721.383985
Observation start date	2000-07-26T14:08:52	2000-07-26T13:52:01
[s] Observation end time (MET)	81037796.184000	81038272.422658
Observation end date	2000-07-26T22:28:52	2000-07-26T22:37:52
Read mode	TIMED	TIMED

Parameter	Planned	Actual
Obspar format version number	7	7
Obspar file type	PREDICTED	ACTUAL
Obspar update status	NONE	UPDATED
Number of optional ACIS chips dropped	0	0
On-chip summing requested	N	N
Subarray requested	NONE	NONE
Alternating exposures requested	N	N
[s] Primary exposure time	0.000000	3.2

## 2.3 Aspect



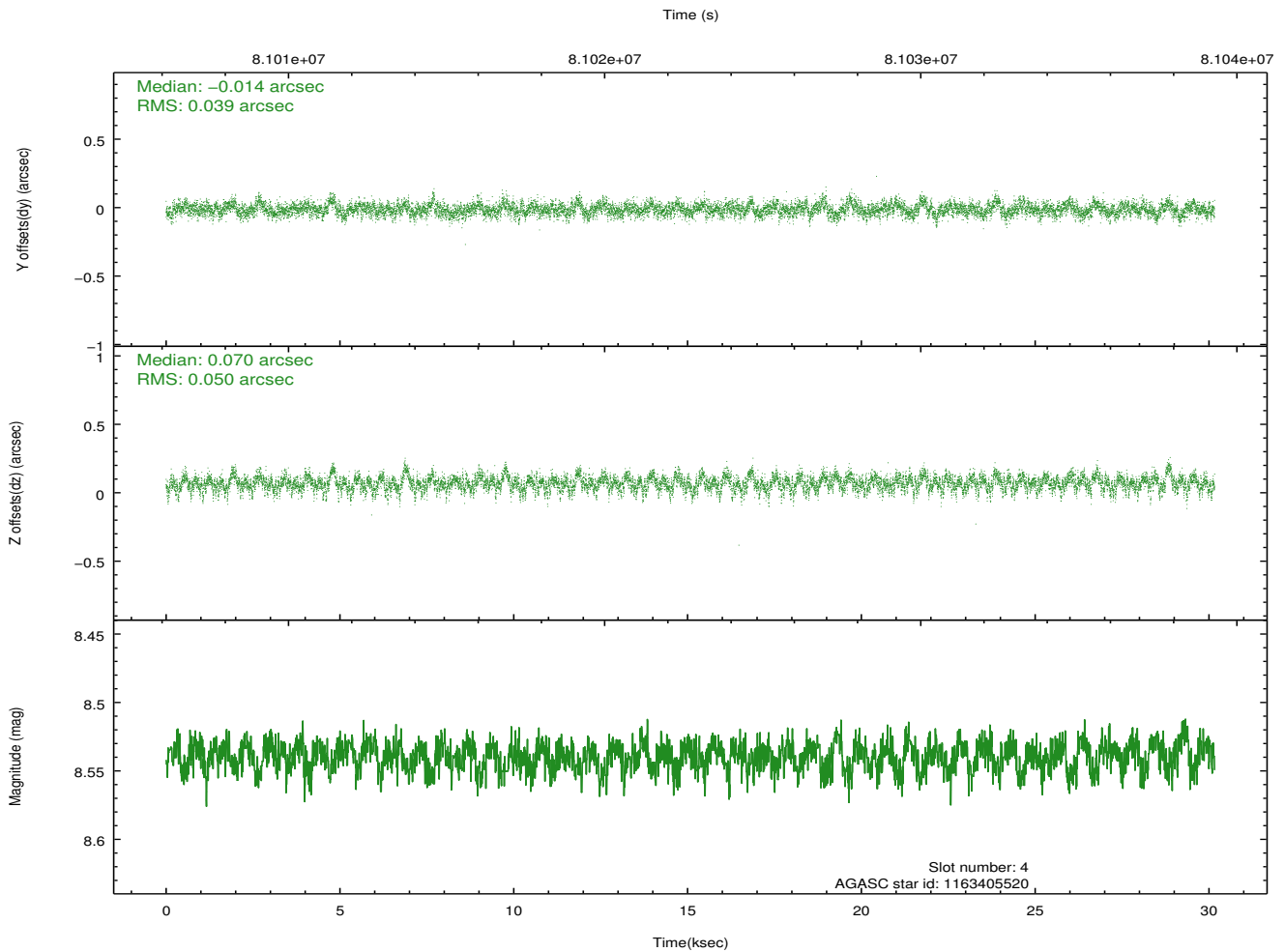
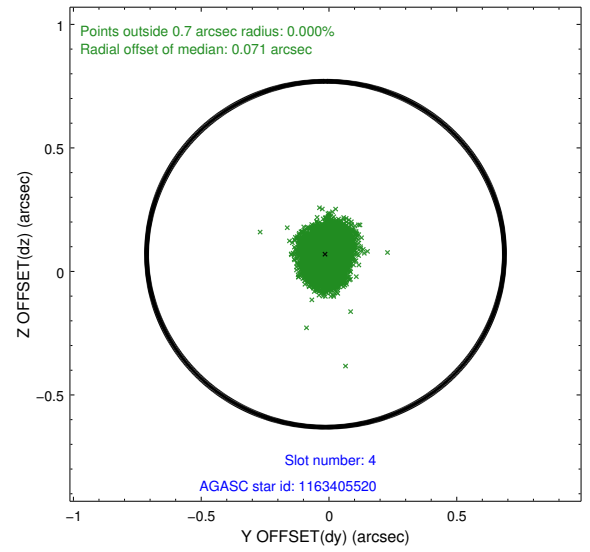
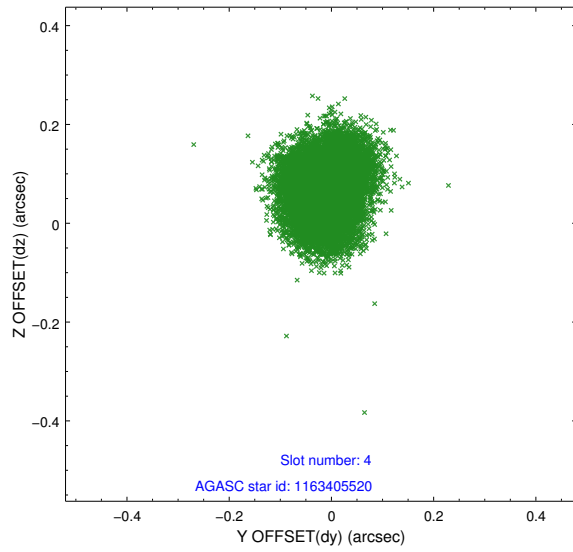


Slot Statistics

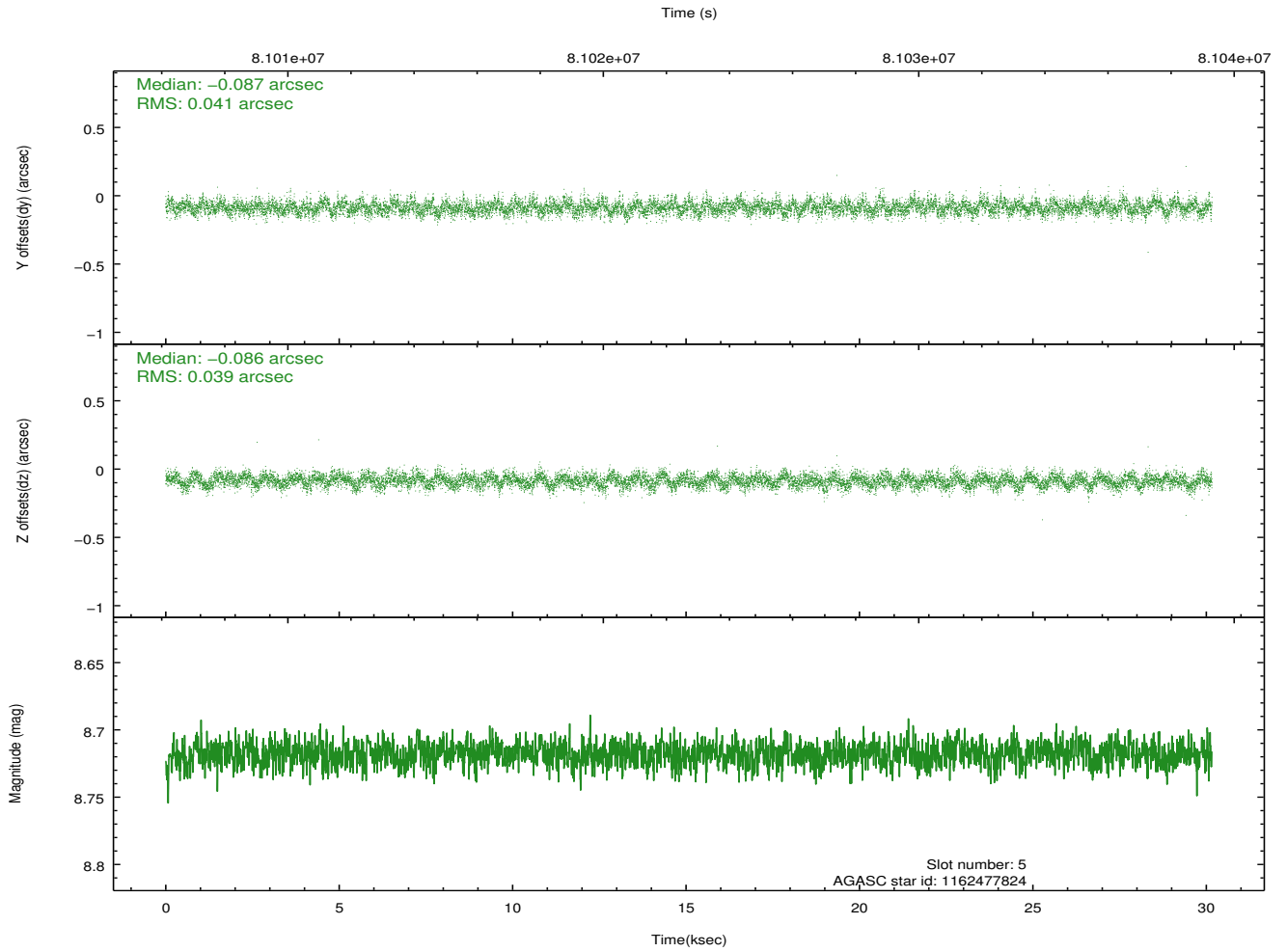
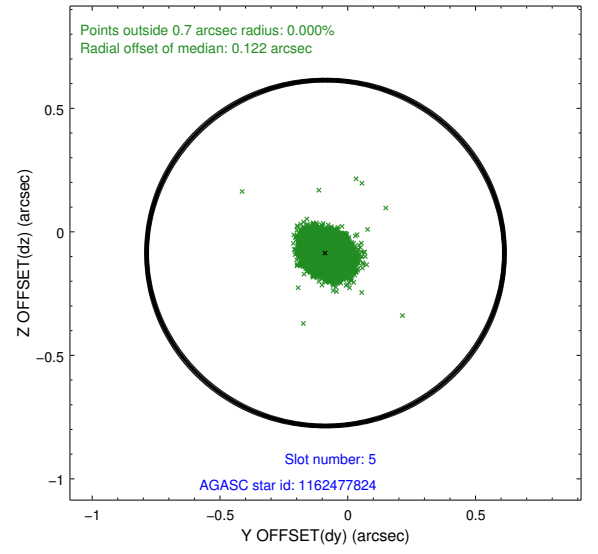
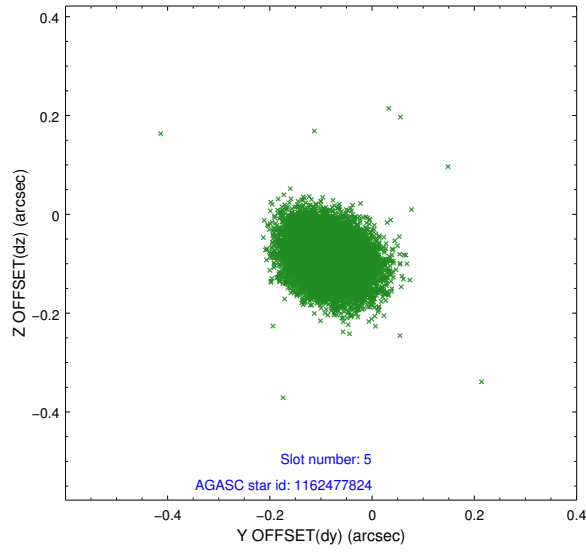
slot	status	id	mag	n_pts	med_dy	med_dz	dr1	dr2	ra	dec	mean_y	mean_z
0	FID	ACIS-I-2	7.15	7355	-0.028	-0.029	0.009	0.015	0.000000	0.000000	-755.25	-834.60
1	FID	ACIS-I-4	7.19	7352	-0.035	0.032	0.007	0.012	0.000000	0.000000	2158.76	1071.61
2	FID	ACIS-I-5	7.23	7352	-0.038	0.065	0.009	0.015	0.000000	0.000000	-1809.00	1069.56
3	OMITTED		0.00	0	0.000	0.000	0.000	0.000	0.000000	0.000000	0.00	0.00
4	GUIDE	1163405520	8.54	14706	-0.014	0.070	0.067	0.112	68.632787	-61.703025	-1719.28	-819.48
5	GUIDE	1162477824	8.72	14704	-0.087	-0.086	0.059	0.098	67.909814	-61.841376	-1380.47	464.31
6	GUIDE	1162490976	10.01	14695	0.093	-0.125	0.116	0.189	67.170836	-61.200169	1231.80	125.87
7	GUIDE	1162491072	10.24	14696	0.008	0.143	0.117	0.195	68.047301	-61.020222	853.33	-1486.39

## 2.4 Star Slots

### 2.4.1 Slot 4

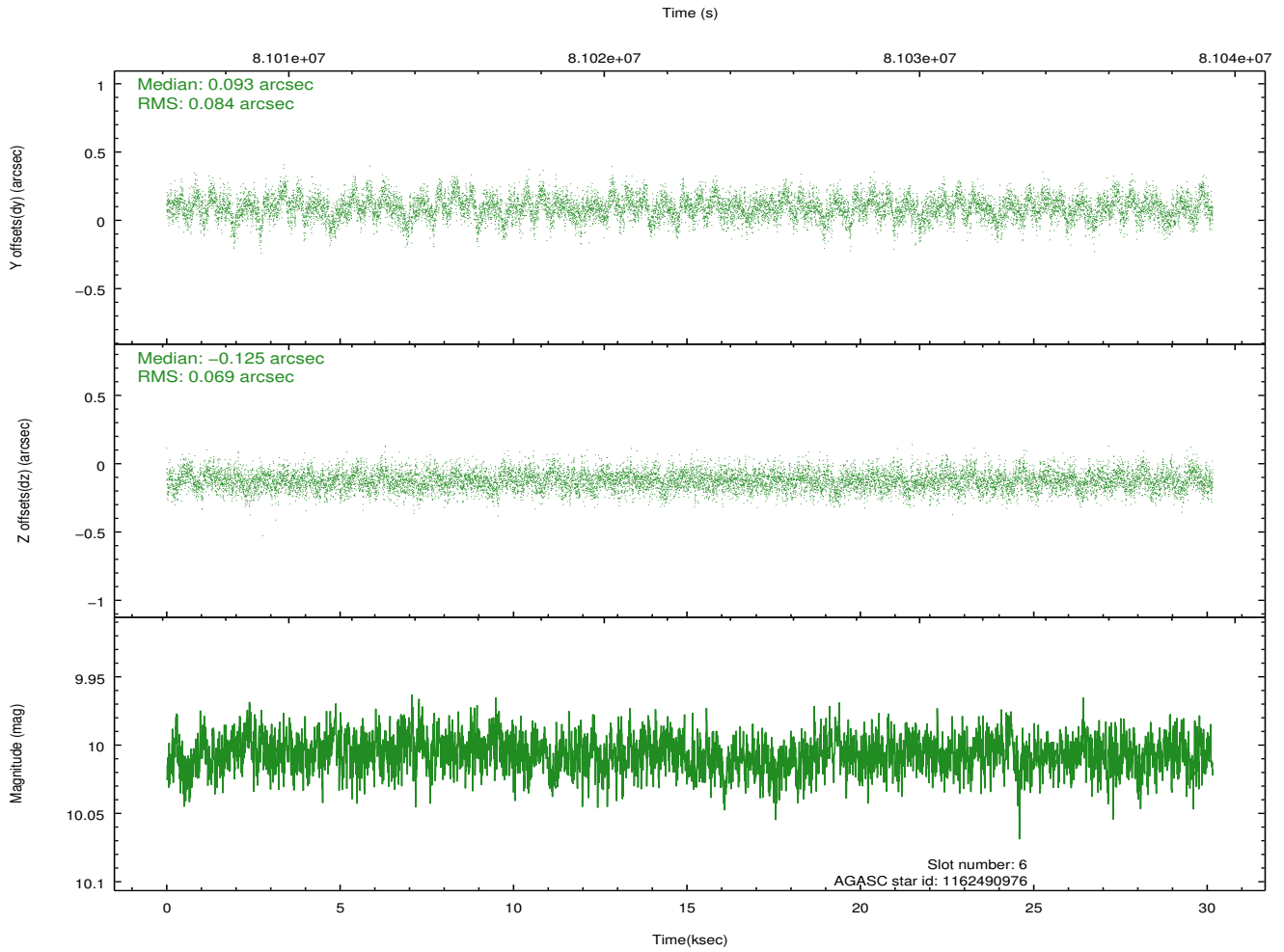
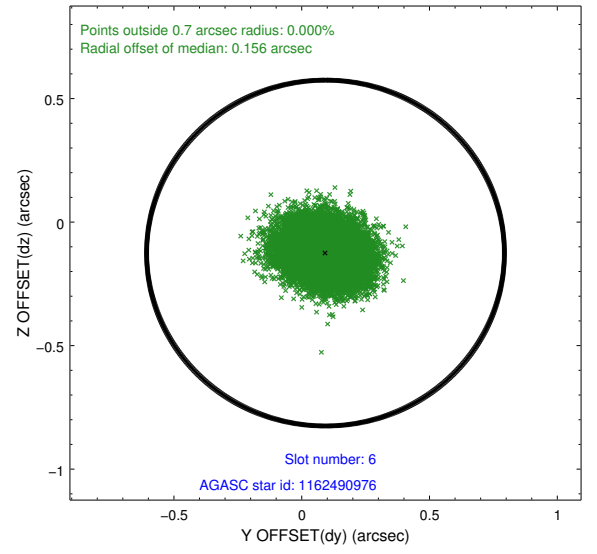
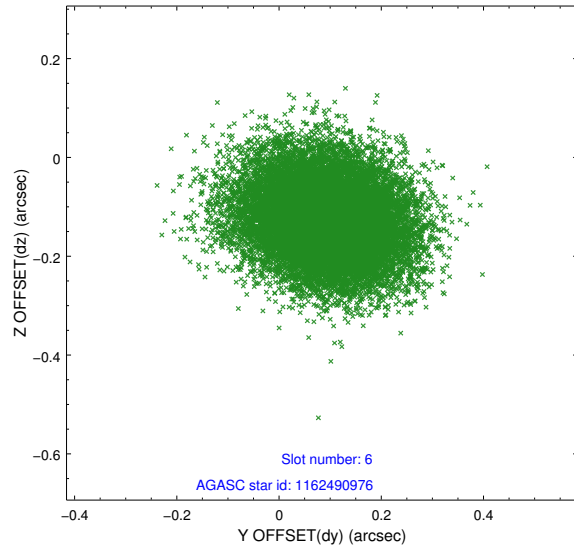


## 2.4.2 Slot 5

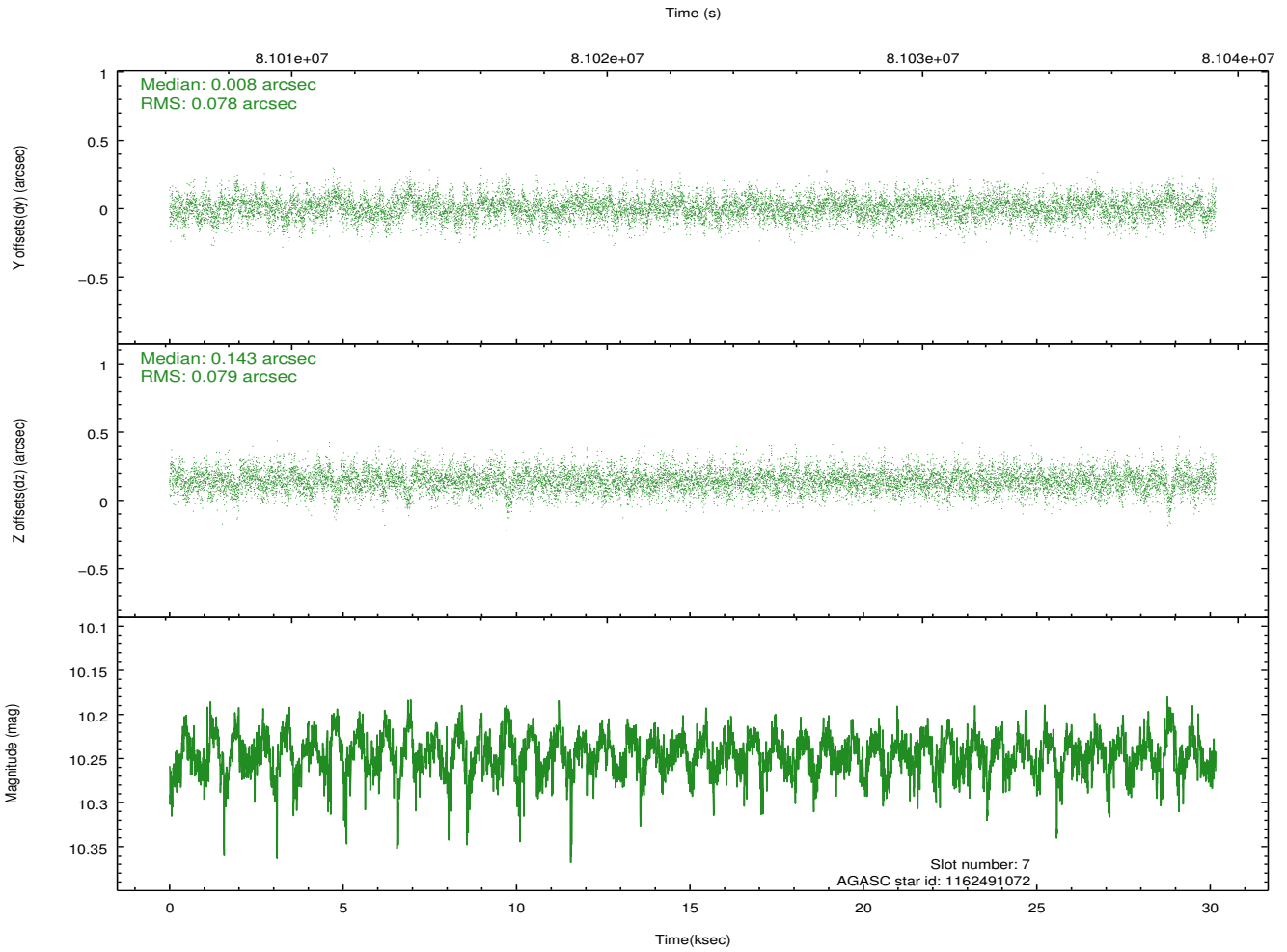
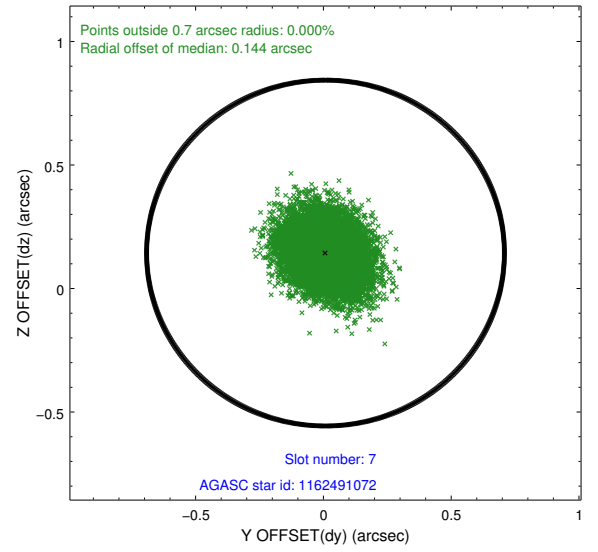
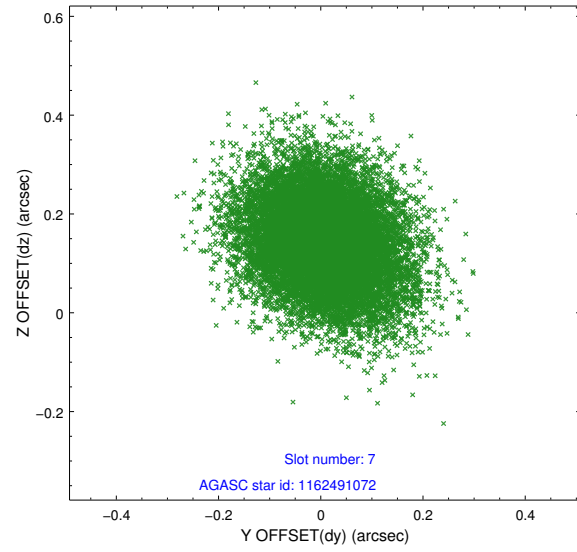




### 2.4.3 Slot 6

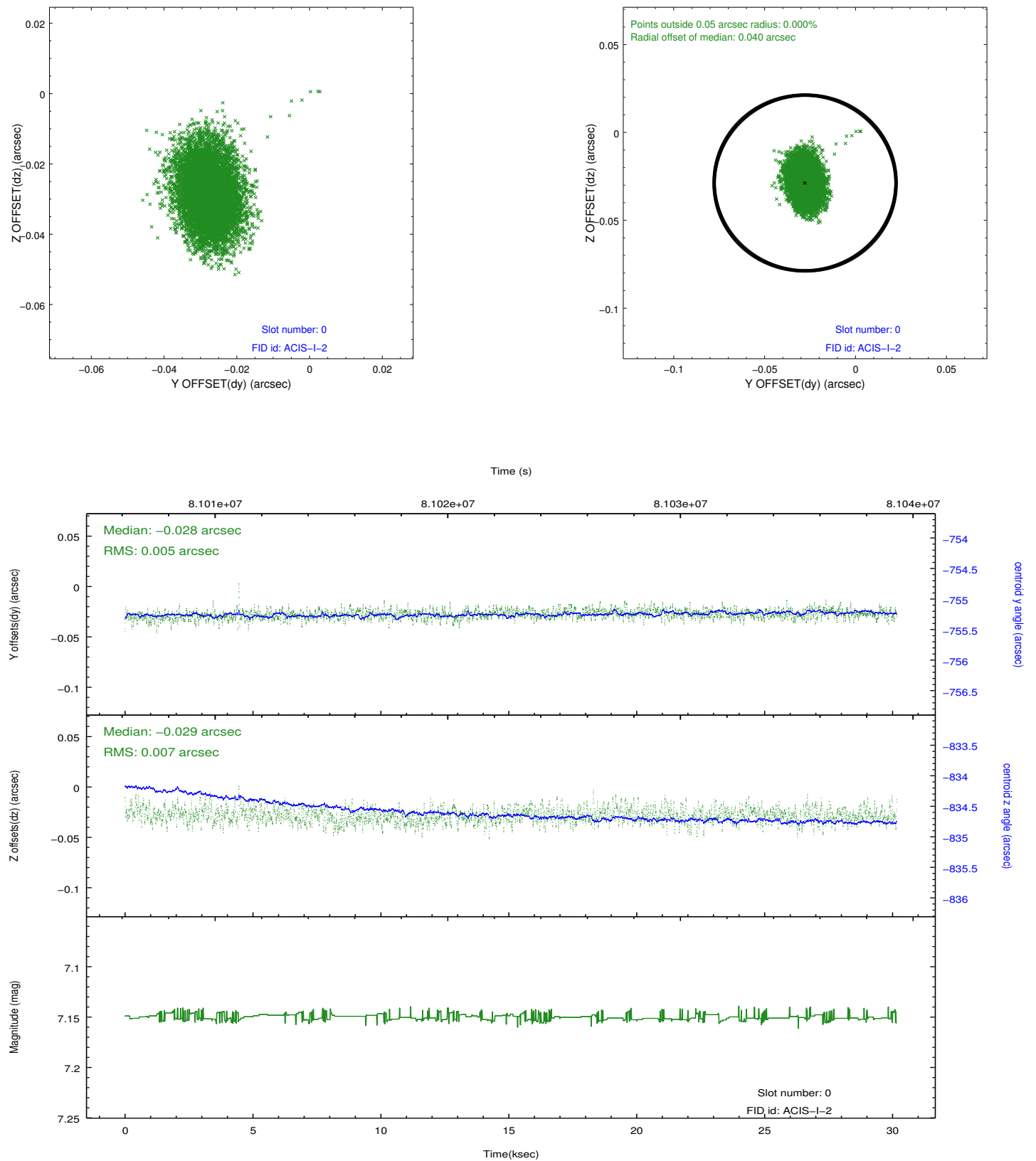


## 2.4.4 Slot 7

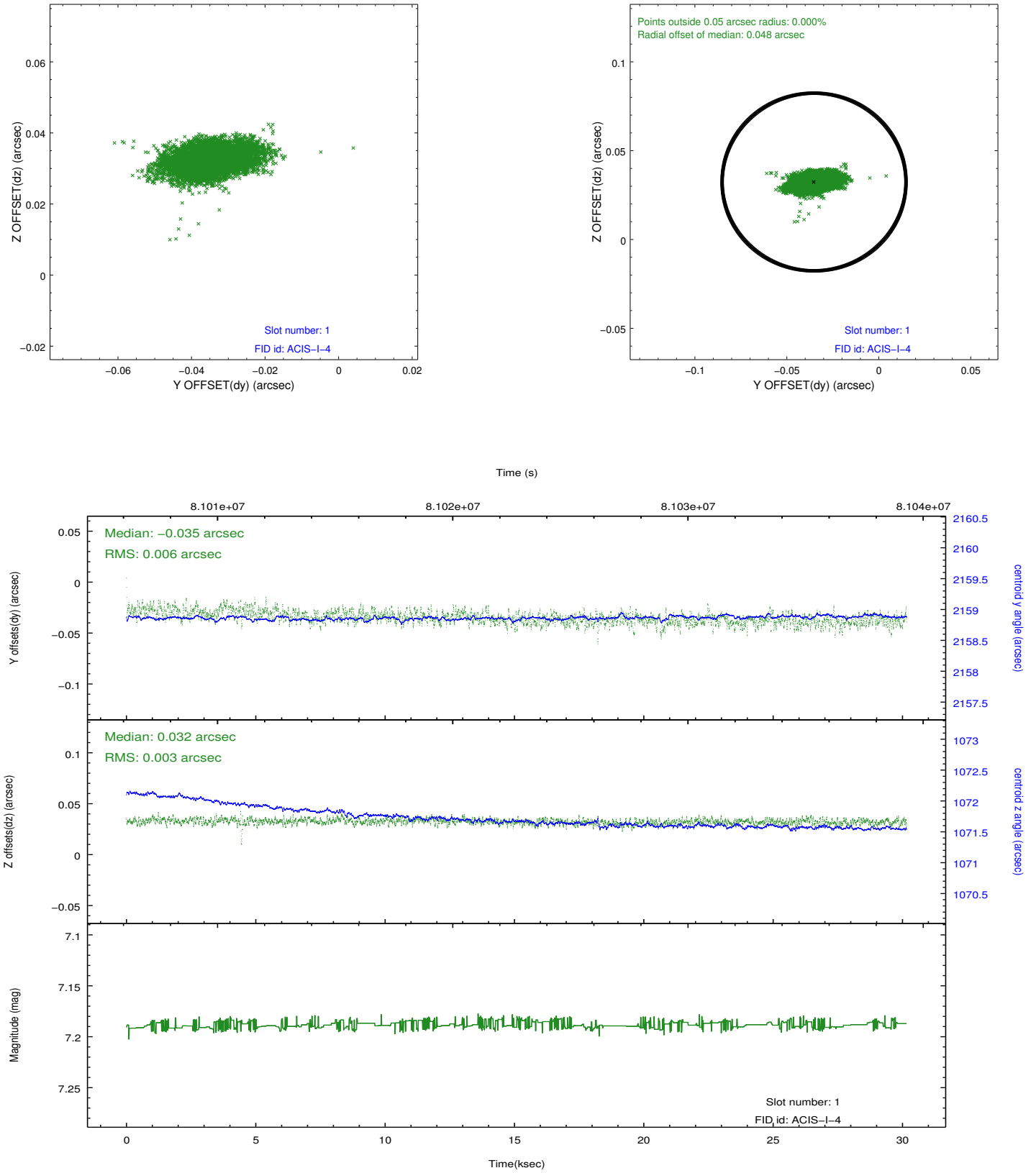


## 2.5 FID Slots

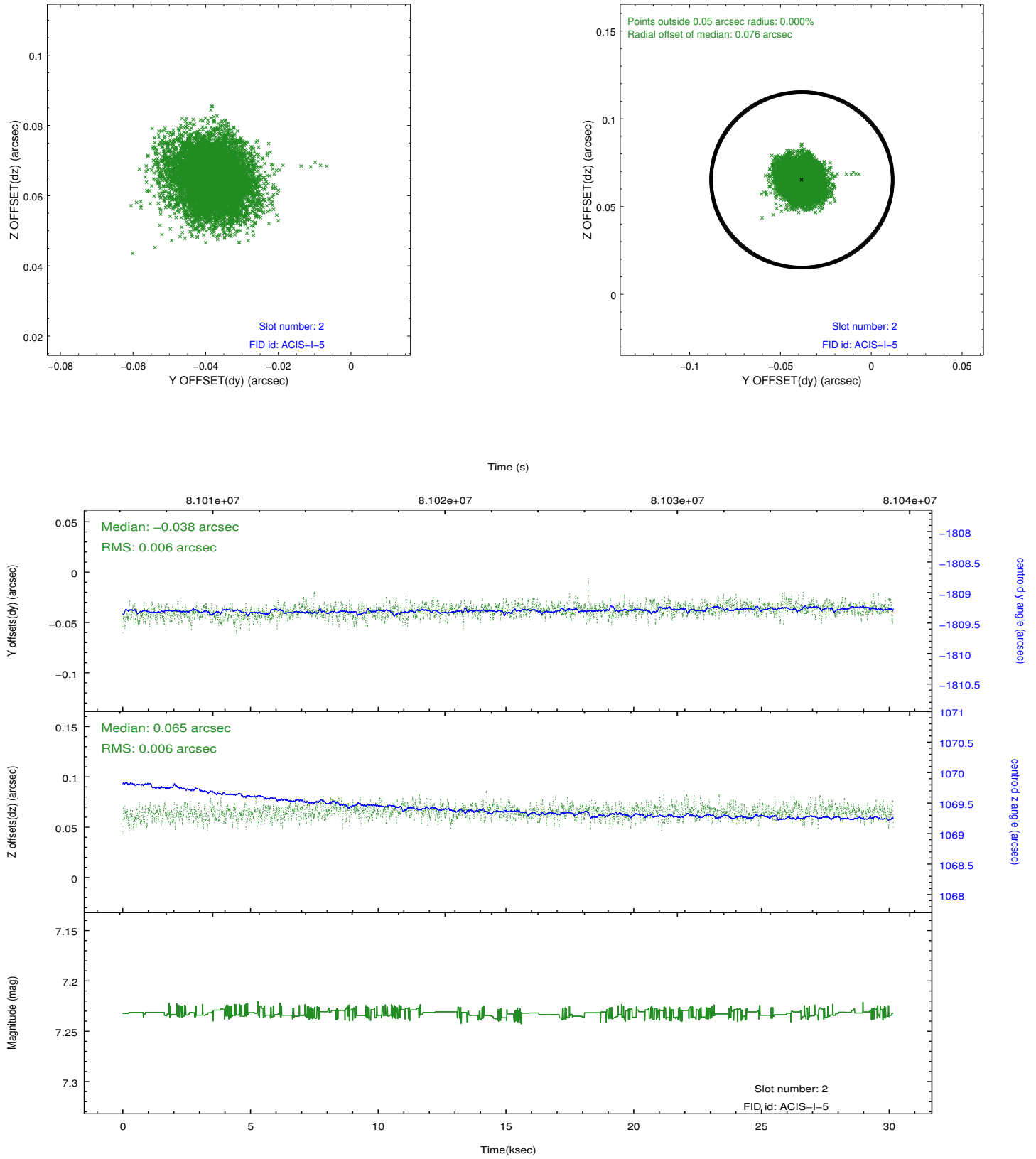
### 2.5.1 Slot 0



## 2.5.2 Slot 1



### 2.5.3 Slot 2



## A Summary

### A.1 Status

V&V Scientist	Joy Nichols
V&V Date (YYYY-MM-DD)	2012.09.11
V&V Edition	1
V&V Disposition and Status	OK
V&V Charge Time	30.1376

### A.2 Comments

The guide sta in slot 3 was removed from the aspect solution due to poor data quality. The aspect solution is improved by the removal of this guide star from the solution.