

V&V Reference Report

L2 ASCDS Version : 7.6.10

Observation 899 - L2 Version 001
Chandra X-Ray Center

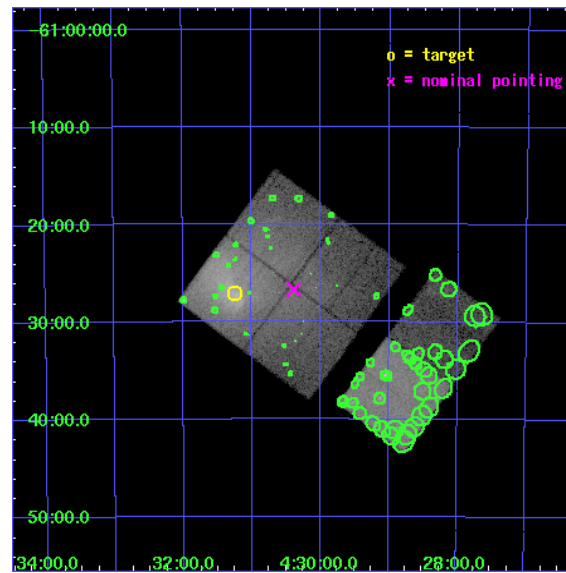
L2 Processing Date : May 31 2007

Contents

1	Front	2
2	OBI	3
2.1	OBI	3
2.1.1	Images	3
2.1.2	Bias	3
2.1.3	Parameters	4
2.1.4	Events	4
2.2	Compared Parameters	5
2.3	Aspect	6
2.4	Star Slots	9
2.4.1	Slot 4	9
2.4.2	Slot 5	10
2.4.3	Slot 6	11
2.4.4	Slot 7	12
2.5	FID Slots	13
2.5.1	Slot 0	13
2.5.2	Slot 1	14
2.5.3	Slot 2	15
3	Point Sources	16
A	Summary	17
A.1	Status	17
A.2	Comments	17

1 Front

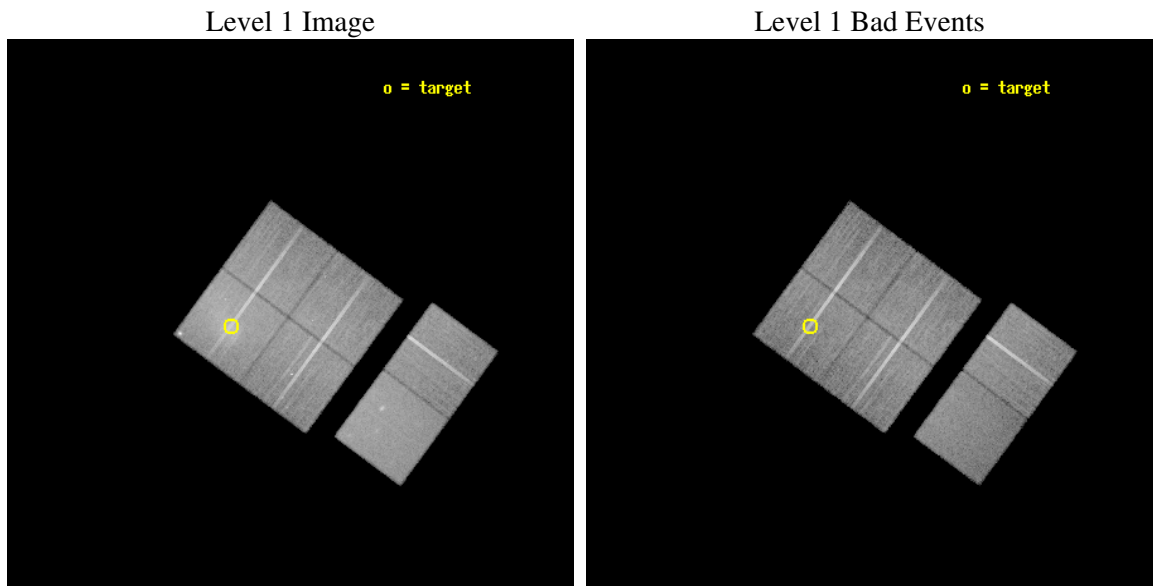
seq_num	800075
obs_id	899
title	A3266: LABORATORY FOR THE STUDY OF CLUSTER MERGERS
observer	Professor Mark Henriksen
object	ABELL 3266
dtcycle	0
cycle	P
ra_targ	67.812917
dec_targ	-61.451111
ra_nom	67.596446918072
dec_nom	-61.444997344211
roll_nom	126.43632530166
revision	4
ontime	30134.154146999
livetime	29752.577342581
ontime0	30140.6361572
ontime1	30134.154146999
ontime2	30140.636097386
ontime3	30140.636077449
ontime6	30147.11807768
ontime7	30147.11807768
l2events	323168



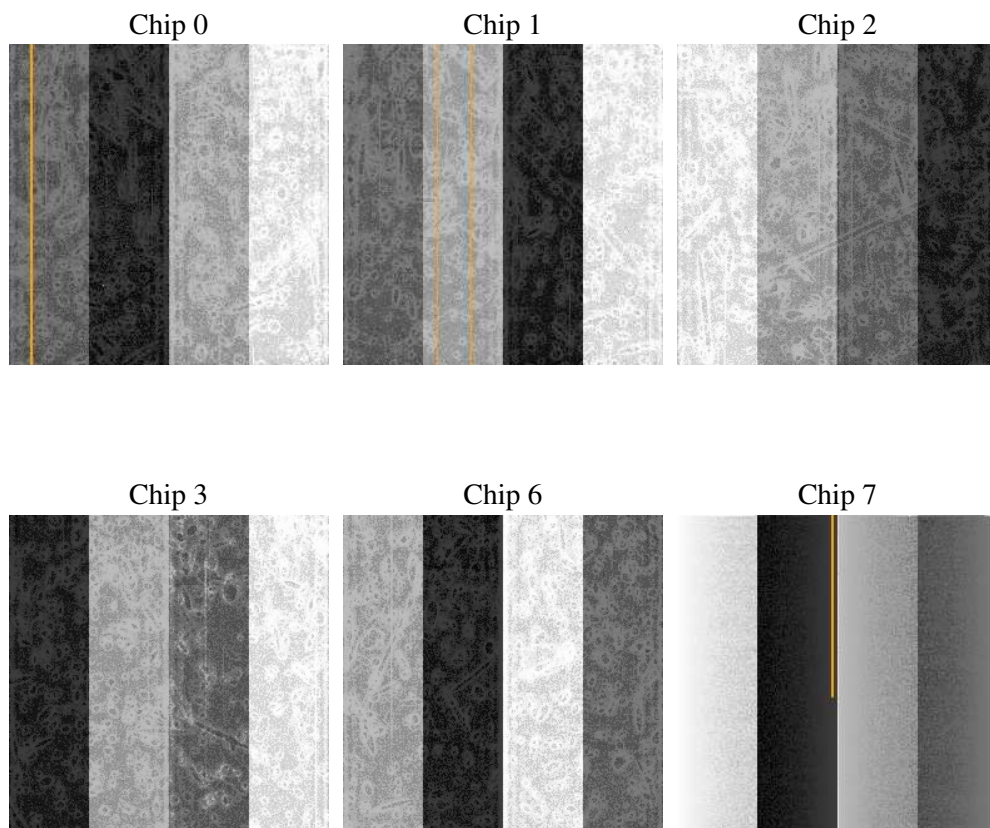
2 OBI

2.1 OBI

2.1.1 Images



2.1.2 Bias



2.1.3 Parameters

obi_num	0
ascdsver	7.6.10
caldsver	3.4.0
date	2007-06-01T01:25:21
revision	4

sched_exp_time	30000.000000
ontime	30134.154146999
ontime0	30140.6361572
ontime1	30134.154146999
ontime2	30140.636097386
ontime3	30140.636077449
ontime6	30147.11807768
ontime7	30147.11807768
l1events	1215222

2.1.4 Events

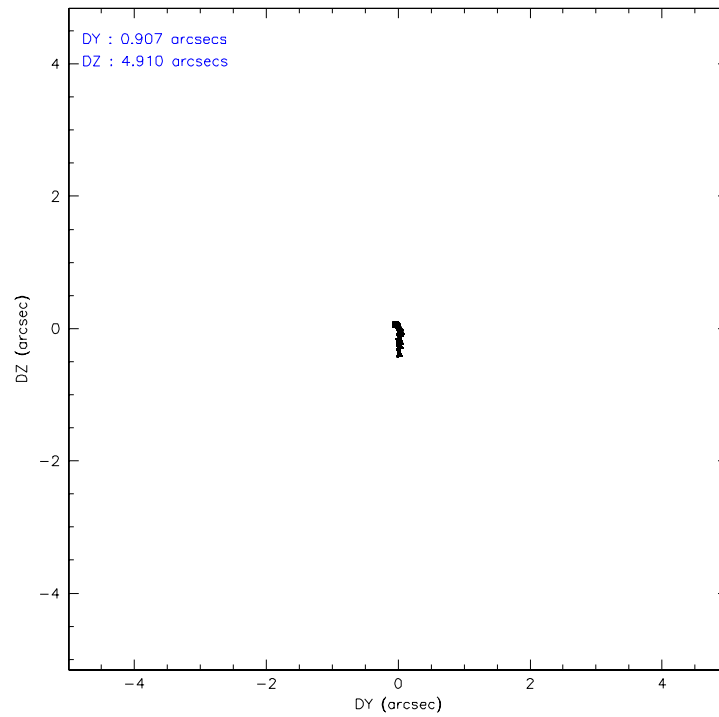
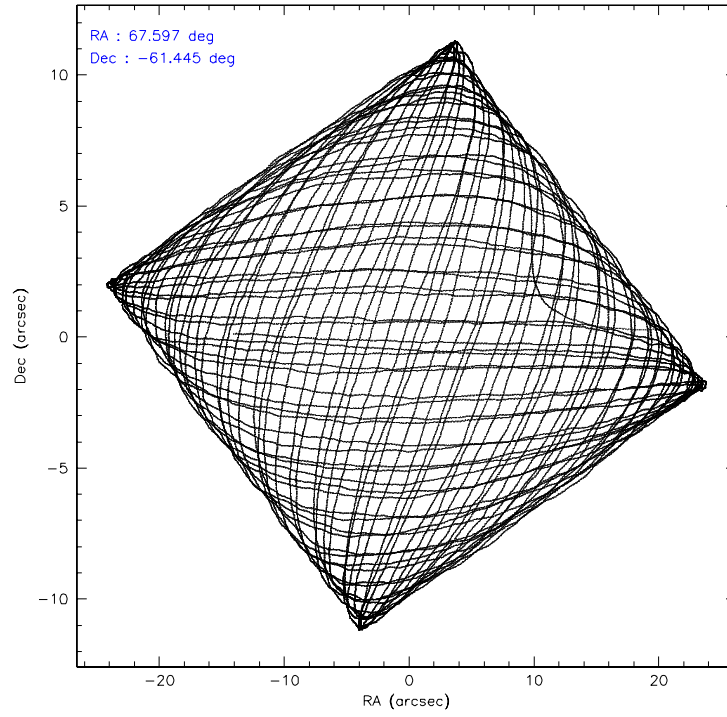
	ccd 0	ccd 1	ccd 2	ccd 3	ccd 6	ccd 7
level 1 events	186688	261069	187010	187697	180211	212547
rejected events	137361	141984	156039	151185	158758	120853
rejected %	73%	54%	83%	80%	88%	56%

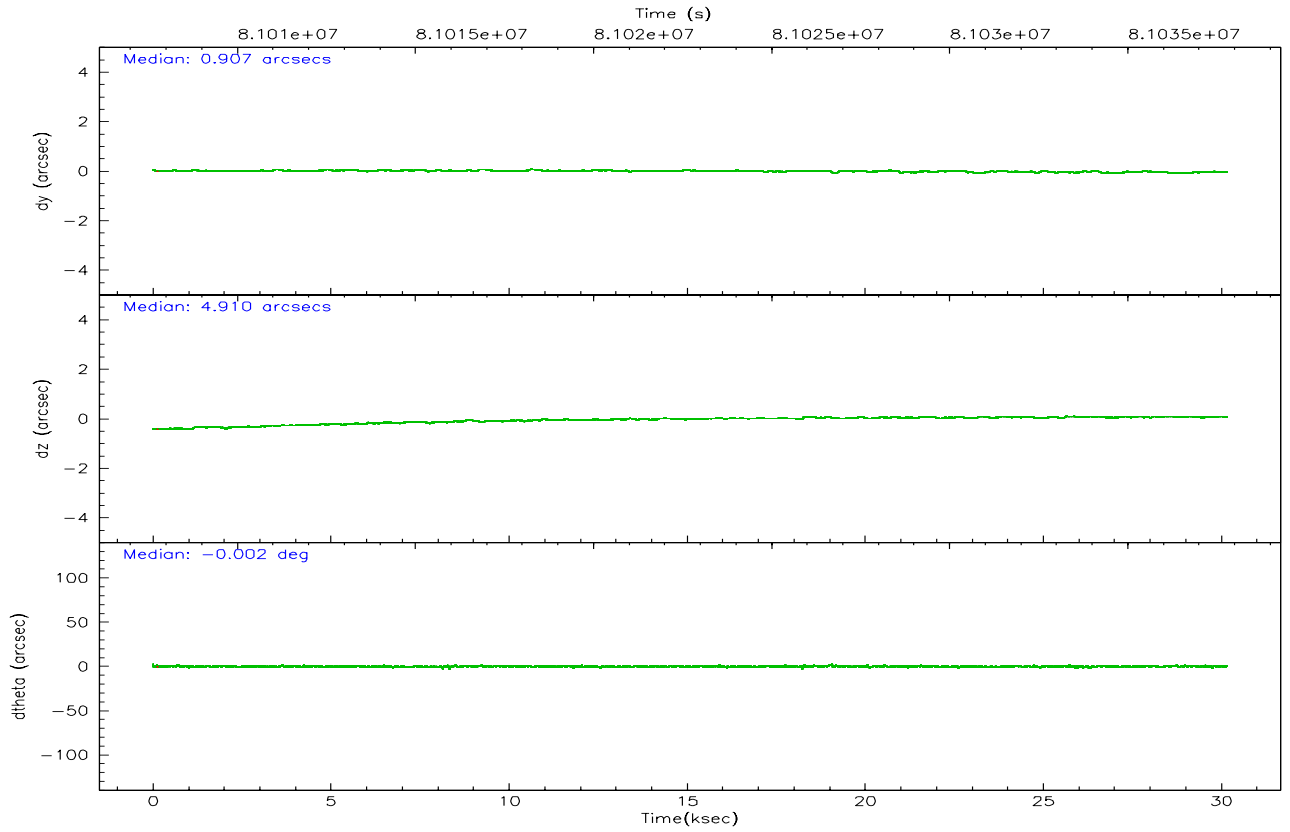
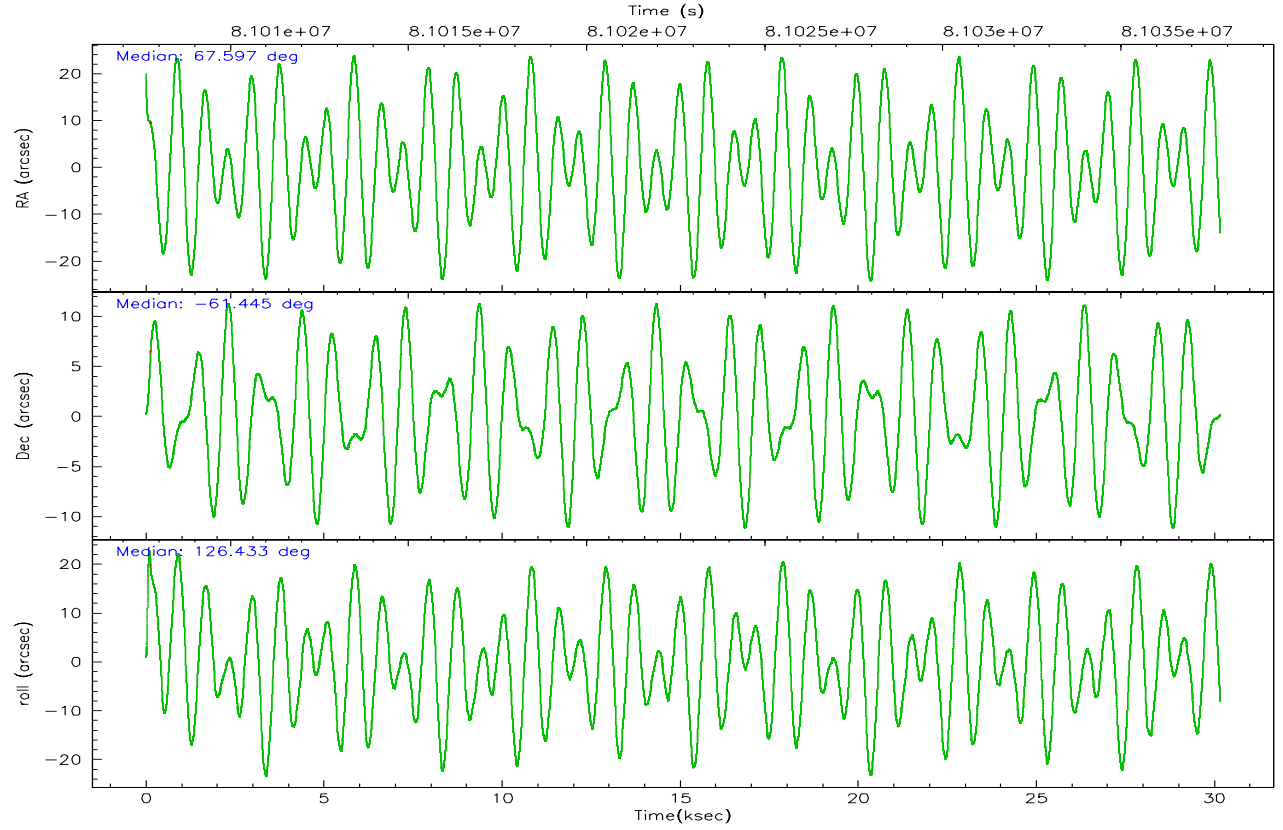
	ccd 0	ccd 1	ccd 2	ccd 3	ccd 6	ccd 7
grade 0 events	32524	88861	18055	22706	9325	9999
	17%	34%	9%	12%	5%	4%
grade 1 events	162	340	124	118	88	193
	0%	0%	0%	0%	0%	0%
grade 2 events	7186	13940	5178	5467	4173	18066
	3%	5%	2%	2%	2%	8%
grade 3 events	2892	5067	2154	2398	1947	8502
	1%	1%	1%	1%	1%	4%
grade 4 events	2634	5015	2078	2242	2063	8260
	1%	1%	1%	1%	1%	3%
grade 5 events	5922	6525	5539	6326	7179	20133
	3%	2%	2%	3%	3%	9%
grade 6 events	4152	6343	3536	3735	3966	46980
	2%	2%	1%	1%	2%	22%
grade 7 events	131216	134978	150346	144705	151470	100414
	70%	51%	80%	77%	84%	47%

2.2 Compared Parameters

Parameter	Planned	Actual	Parameter	Planned	Actual
Instrument	ACIS	ACIS	Obspar format version number	6	6
Detector	ACIS-012367	ACIS-012367	Obspar file type	PREDICTED	ACTUAL
Grating	NONE	NONE	Obspar update status	NONE	UPDATED
Data mode	VFAINT	VFAINT	Number of optional ACIS chips dropped	0	0
Observation mode	POINTING	POINTING	On-chip summing requested	N	N
Pointing RA	67.649175	67.59644691807156	Subarray requested	NONE	NONE
Pointing Dec	-61.456121	-61.44499734421055	Alternating exposures requested	N	N
Pointing Roll	126.273970	126.4363253016611	Primary exposure time	3.200000	3.2
SIM focus pos (mm)	-0.782348	-0.7809083437167272			
SIM defocus (mm)	0	0.001439871863259334			
SIM translation stage pos (mm)	-233.592463	-233.5874344608287			
SIM translation stage offset (mm)	0	-0.005018542100998502			
Observation start time	81007796.184000	81006721.383985			
Observation start date	2000-07-26T14:08:52	2000-07-26T13:52:01			
Observation end time	81037796.184000	81038272.422658			
Observation end date	2000-07-26T22:28:52	2000-07-26T22:37:52			
Read mode	TIMED	TIMED			

2.3 Aspect



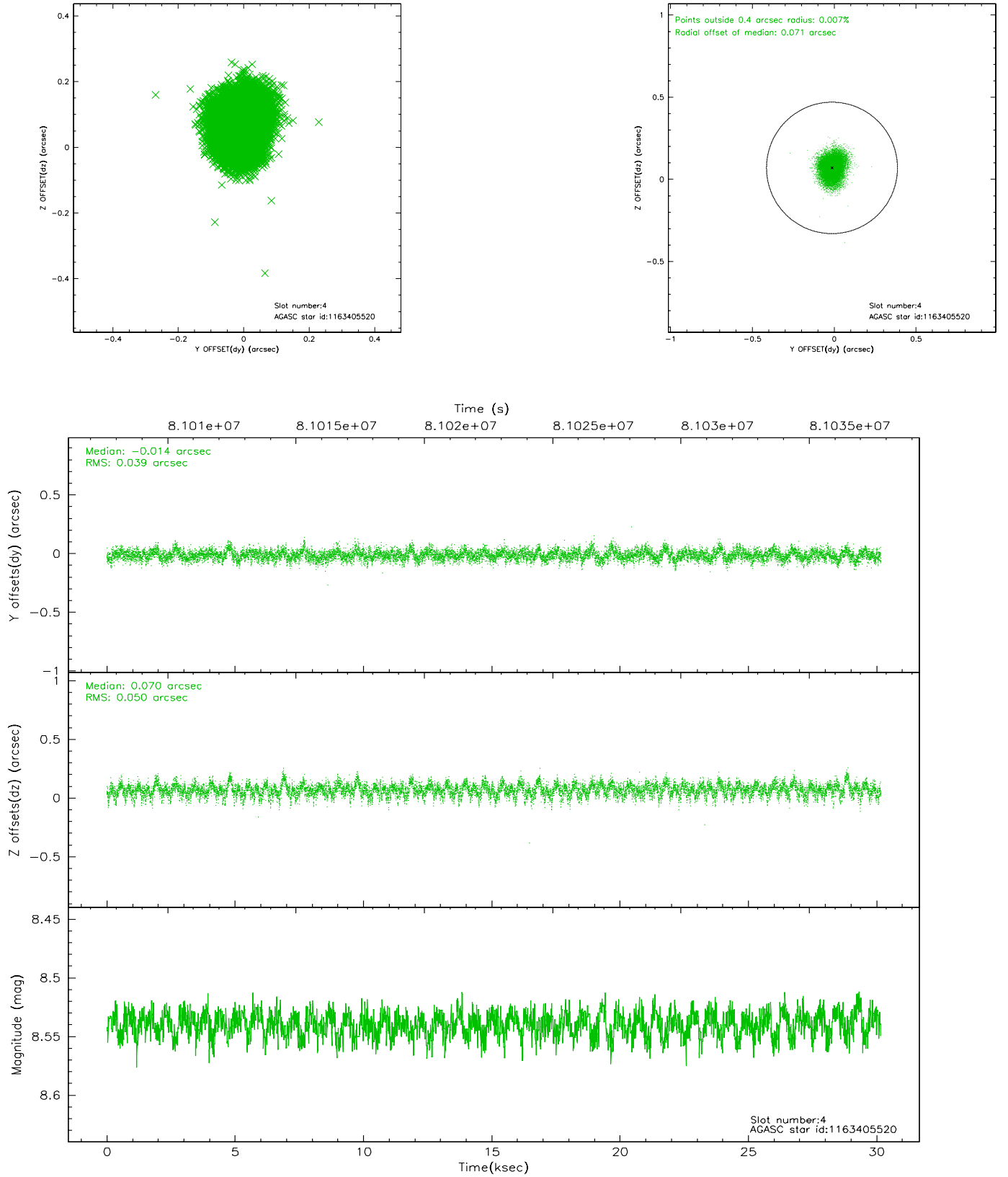


Slot Statistics

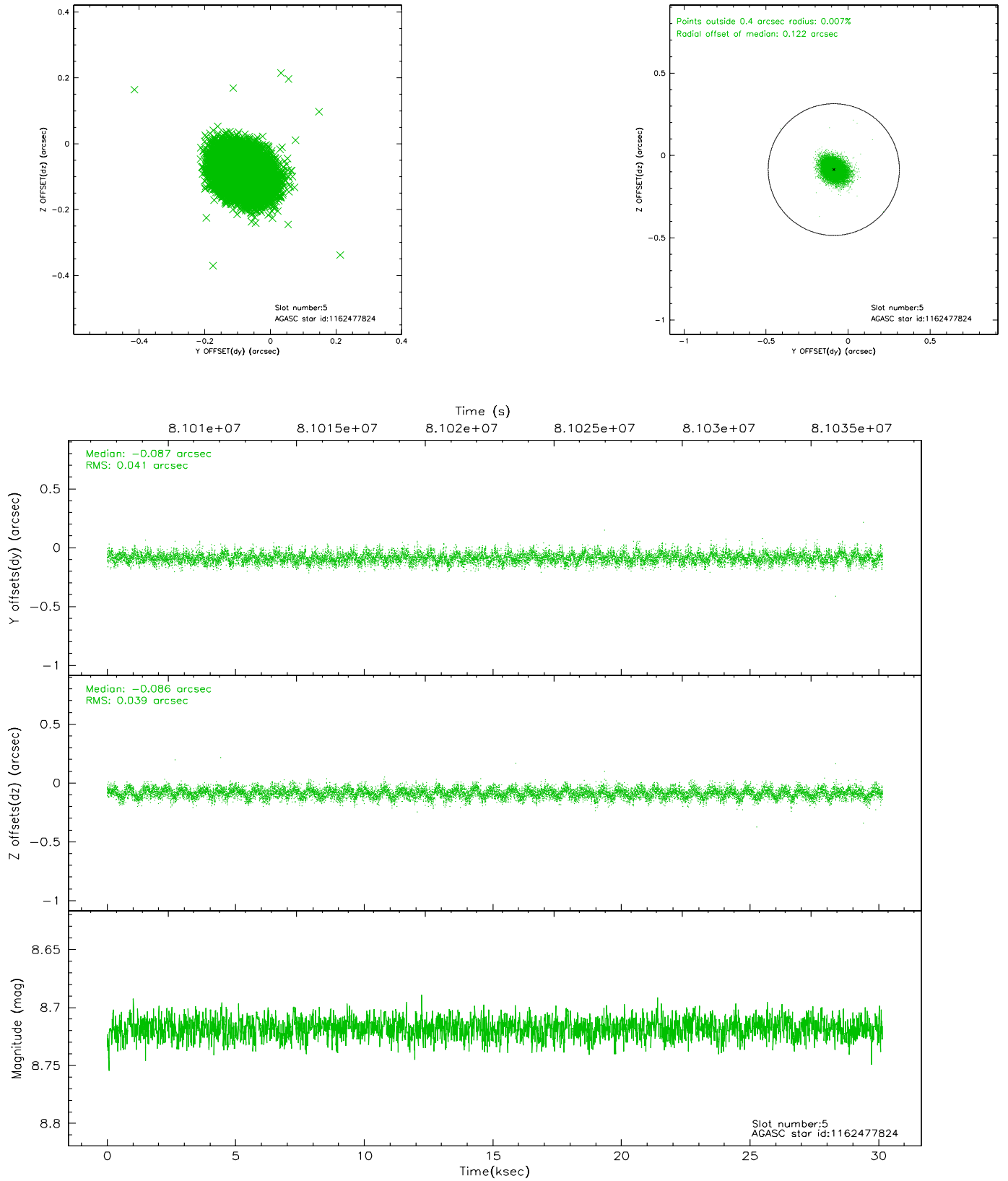
slot	status	id	mag	n_pts	med_dy	med_dz	dr1	dr2	ra	dec	mean_y	mean_z
0	FID	ACIS-I-2	7.15	7355	-0.016	-0.005	0.009	0.015	0.000000	0.000000	-755.24	-834.56
1	FID	ACIS-I-4	7.19	7352	-0.077	0.021	0.006	0.011	0.000000	0.000000	2158.72	1071.61
2	FID	ACIS-I-5	7.23	7352	-0.007	0.054	0.009	0.014	0.000000	0.000000	-1808.97	1069.56
3	OMITTED		0.00	0	0.000	0.000	0.000	0.000	0.000000	0.000000	0.00	0.00
4	GUIDE	1163405520	8.54	14706	-0.014	0.070	0.067	0.112	68.632787	-61.703025	-1719.28	-819.48
5	GUIDE	1162477824	8.72	14704	-0.087	-0.086	0.059	0.098	67.909814	-61.841376	-1380.47	464.31
6	GUIDE	1162490976	10.01	14695	0.093	-0.125	0.116	0.189	67.170836	-61.200169	1231.80	125.87
7	GUIDE	1162491072	10.24	14696	0.008	0.143	0.117	0.195	68.047301	-61.020222	853.33	-1486.39

2.4 Star Slots

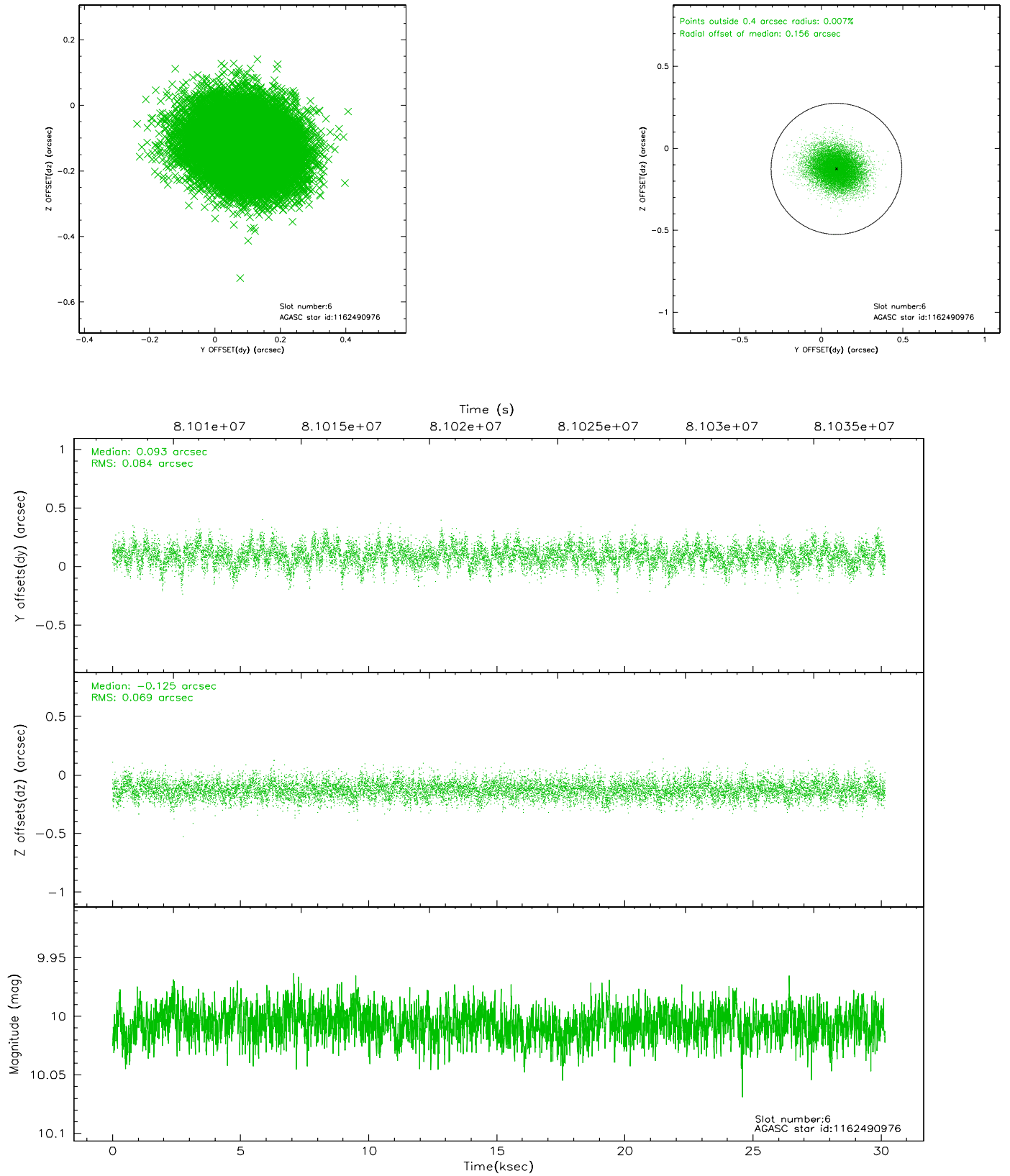
2.4.1 Slot 4



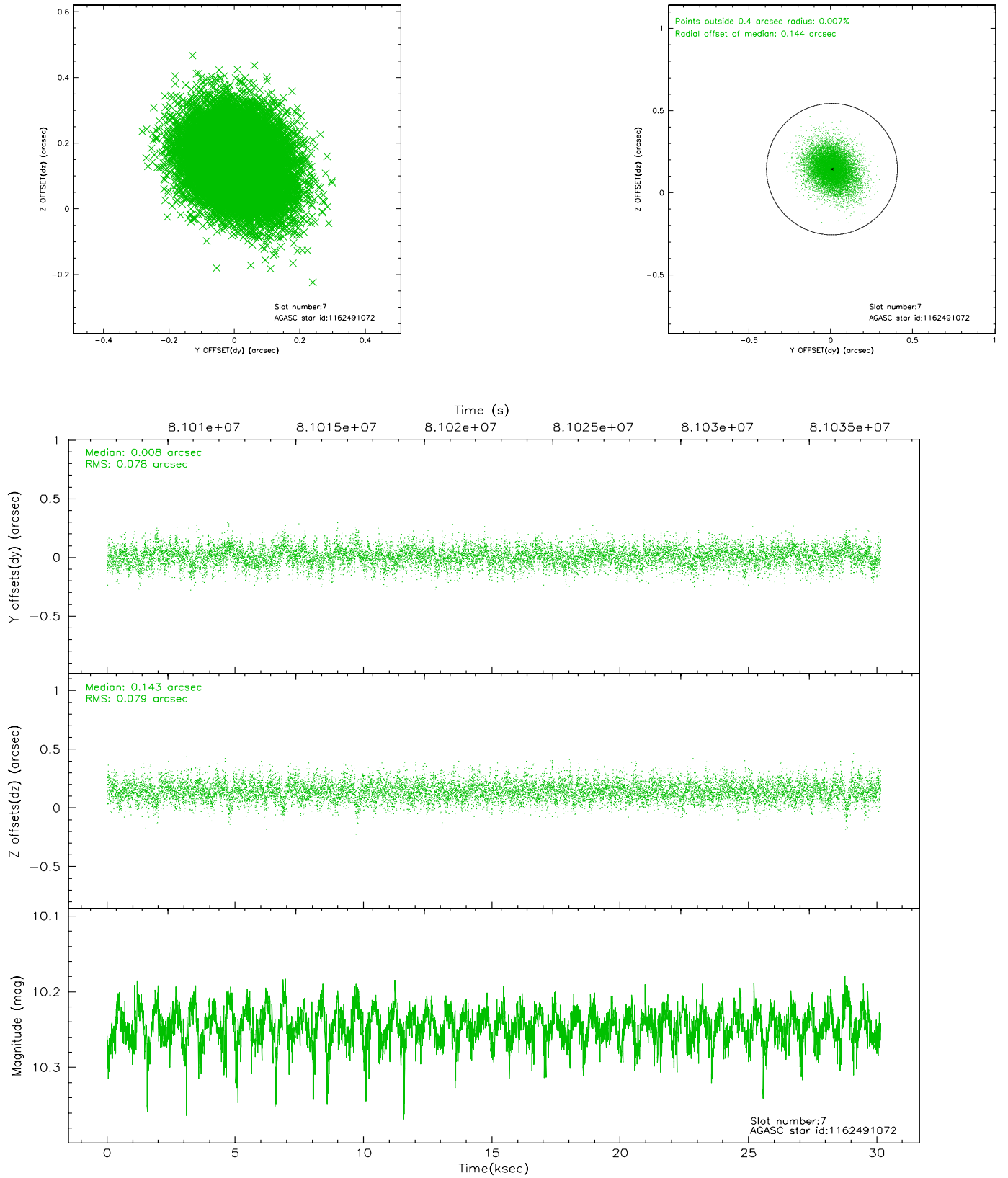
2.4.2 Slot 5



2.4.3 Slot 6

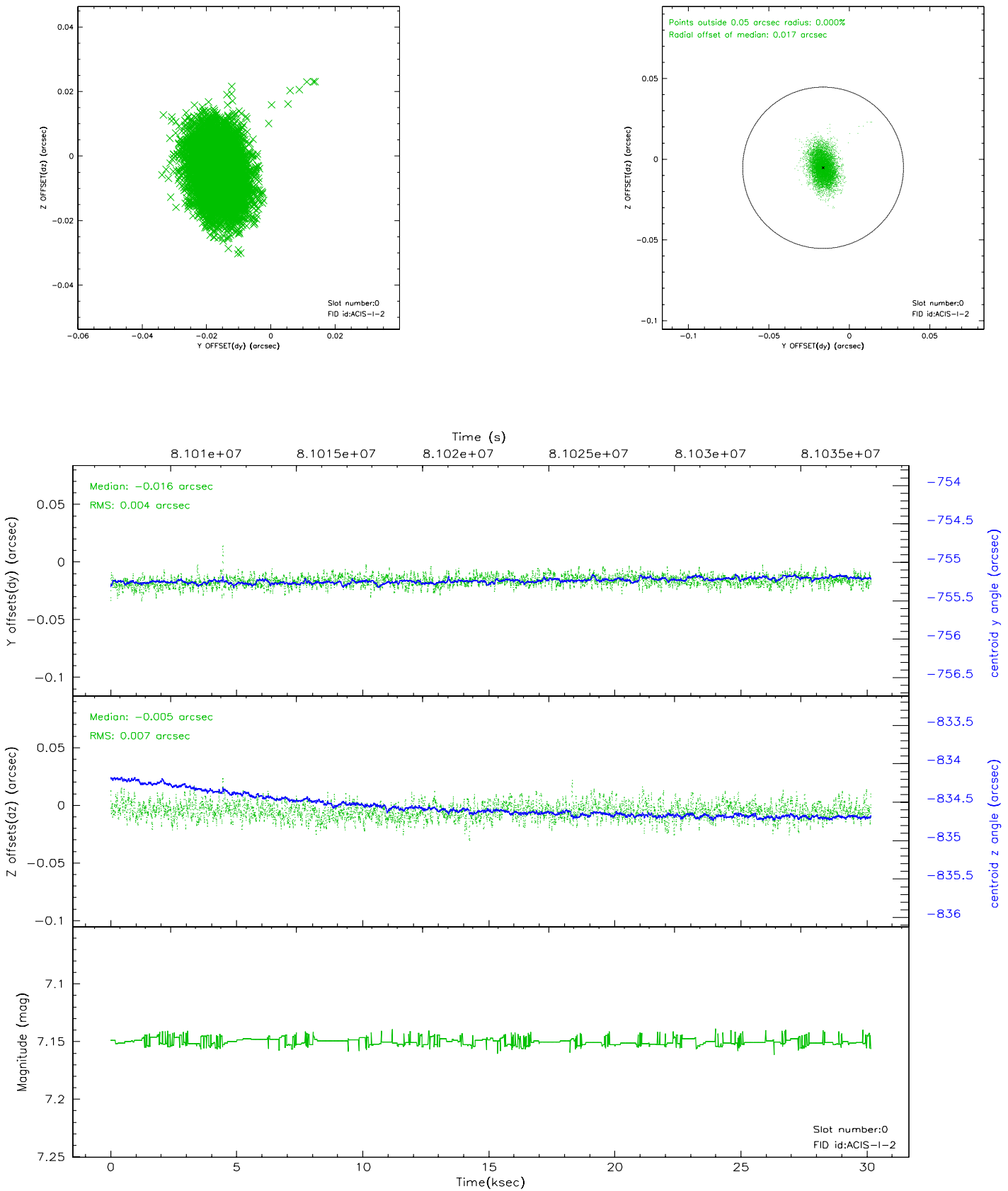


2.4.4 Slot 7

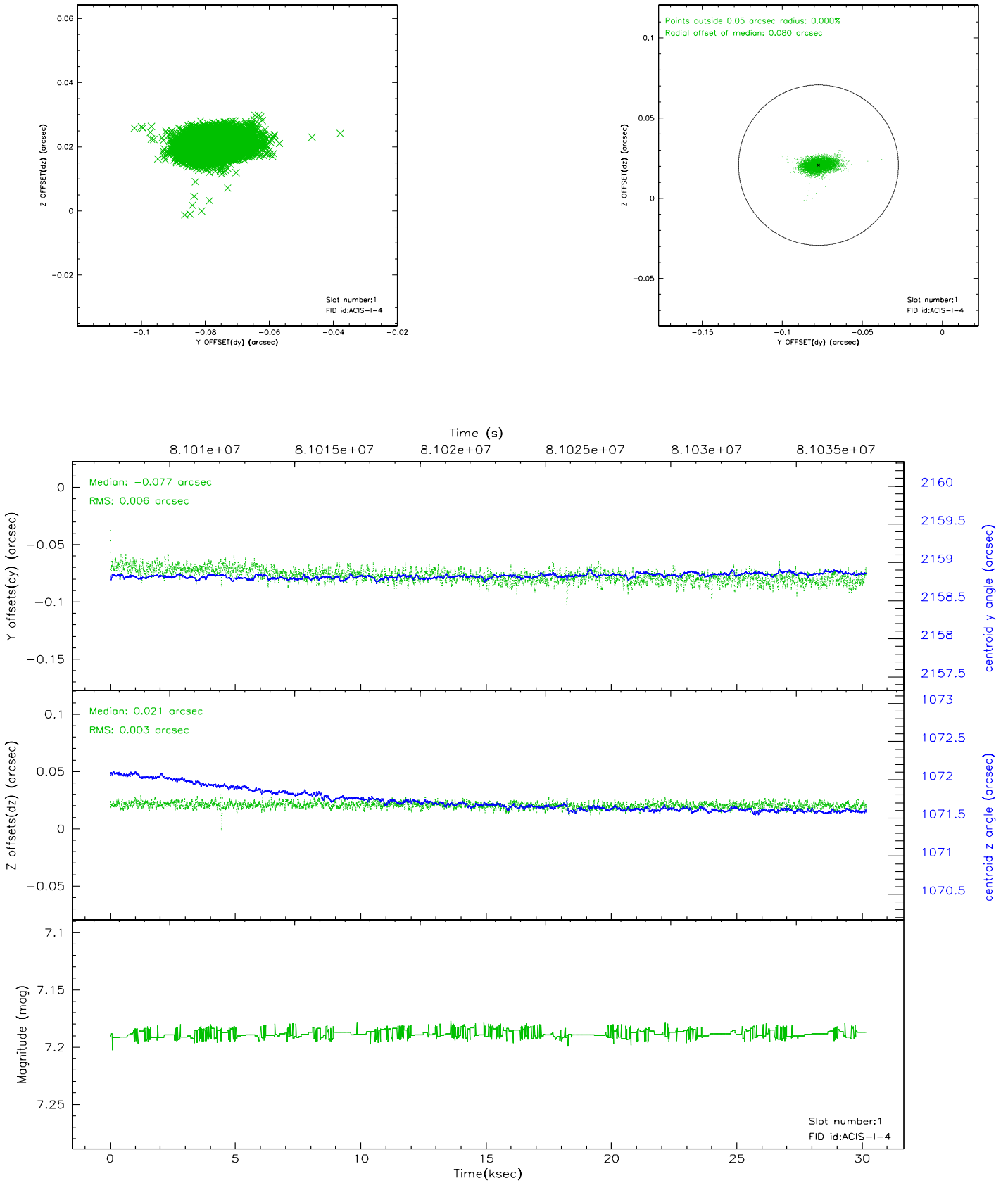


2.5 FID Slots

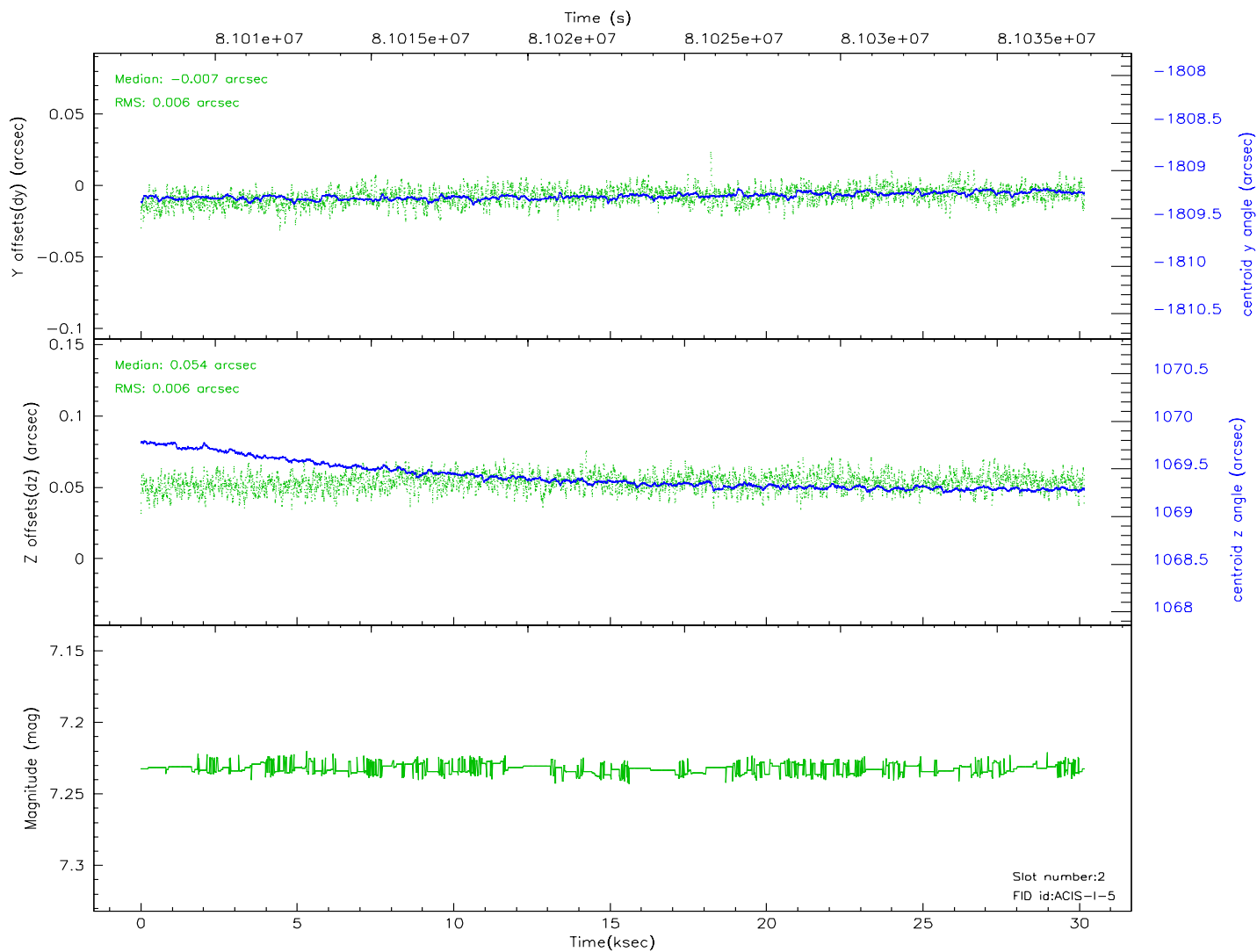
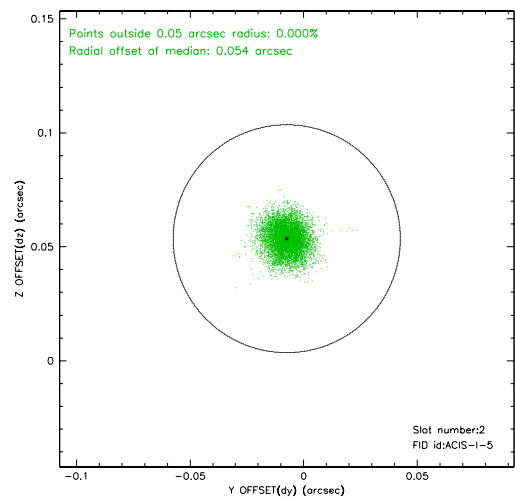
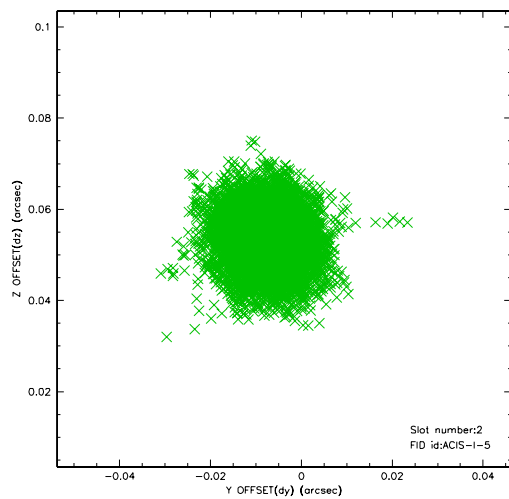
2.5.1 Slot 0



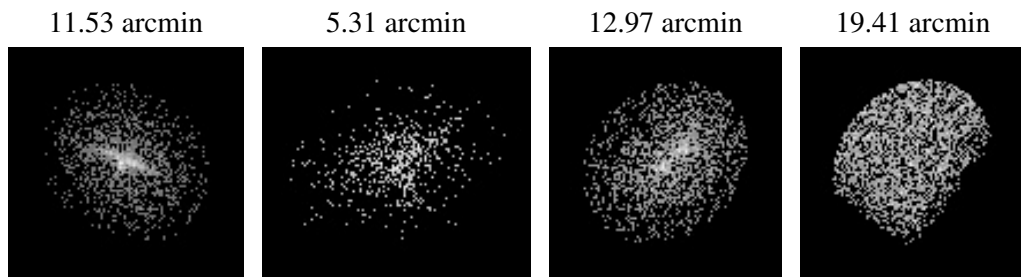
2.5.2 Slot 1



2.5.3 Slot 2



3 Point Sources



A Summary

A.1 Status

V&V Scientist	Jen Lauer
V&V Date (YYYY-MM-DD)	2010.10.01
V&V Edition	2
V&V Disposition and Status	OK
V&V Charge Time	30.1376

A.2 Comments

The guide star in slot 3 was manually excluded from the processing due to poor data quality.