

V&V Reference Report

L2 ASCDS Version : 8.4.5

Observation 892 - L2 Version 4
Chandra X-Ray Center

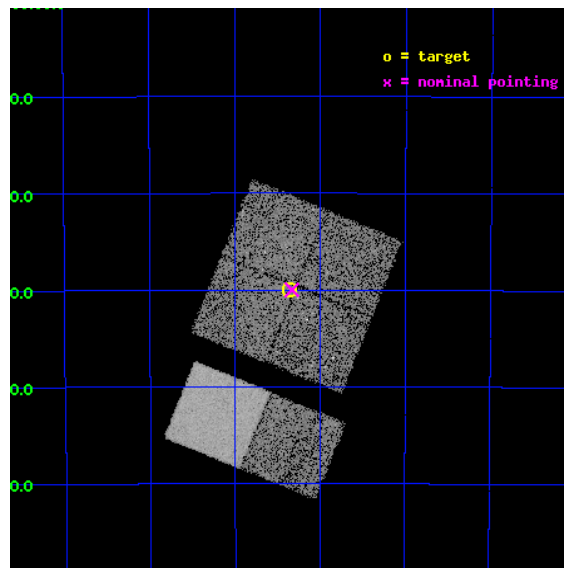
L2 Processing Date : Aug 25 2012

Contents

1	Front	2
2	OBI	3
2.1	OBI	3
2.1.1	Images	3
2.1.2	Bias	3
2.1.3	Parameters	4
2.1.4	Events	4
2.2	Compared Parameters	5
2.3	Aspect	6
2.4	Star Slots	9
2.4.1	Slot 3	9
2.4.2	Slot 4	10
2.4.3	Slot 5	11
2.4.4	Slot 6	12
2.4.5	Slot 7	13
2.5	FID Slots	14
2.5.1	Slot 0	14
2.5.2	Slot 1	15
2.5.3	Slot 2	16
A	Summary	17
A.1	Status	17
A.2	Comments	17

1 Front

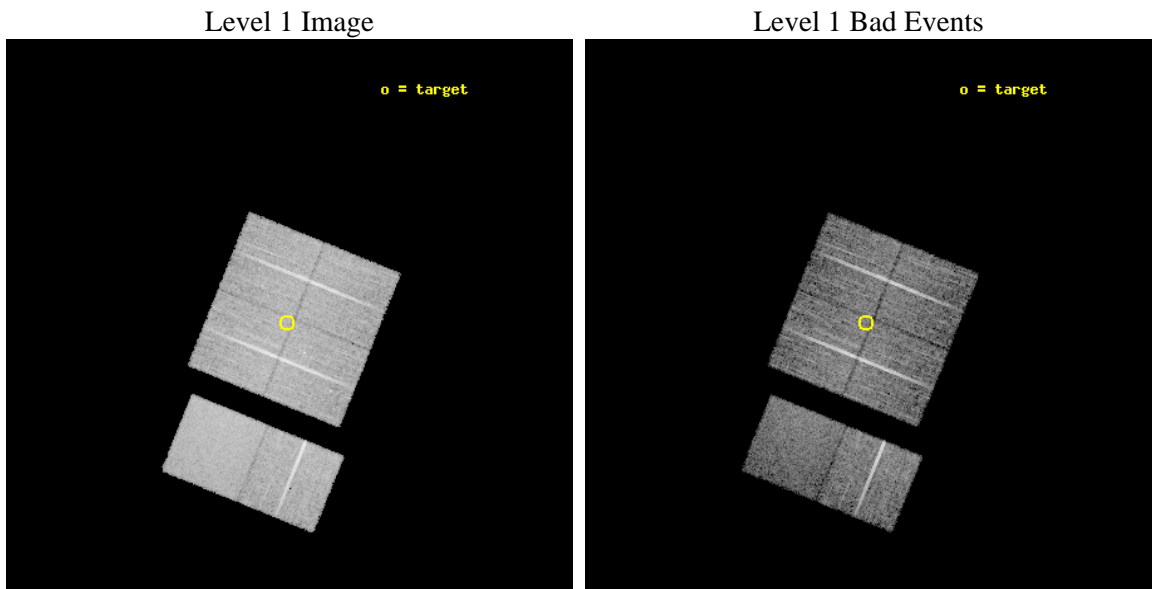
seq_num	800068	Sequence number
obs_id	892	Observation id
title	MERGING SUBSTRUCTURES IN NEARBY CLUSTERS OF GALAXIES	Proposal titl
observer	PROF. JAMES ROSE	Principal investigator
object	ABELL 3125	Source name
dtcycle	0	
cycle	P	events from which exps? Prim/Second/Both
ra_targ	51.841667	Observer's specified target RA [deg]
dec_targ	-53.5	Observer's specified target Dec [deg]
ra_nom	51.833222306846	Nominal RA [deg]
dec_nom	-53.499915223449	Nominal Dec [deg]
roll_nom	202.03039133806	Nominal Roll [deg]
revision	4	Processing version of data
ontime	9776.0000090897	Sum of GTIs [s]
livetime	9652.2104105741	Livetime [s]
ontime0	9772.7590488493	Sum of GTIs [s]
ontime1	9772.7590189278	Sum of GTIs [s]
ontime2	9776.0000090897	Sum of GTIs [s]
ontime3	9776.0000090897	Sum of GTIs [s]
ontime6	9776.0000090897	Sum of GTIs [s]
ontime7	9776.0000090897	Sum of GTIs [s]
l2events	68464	Number of level 2 events



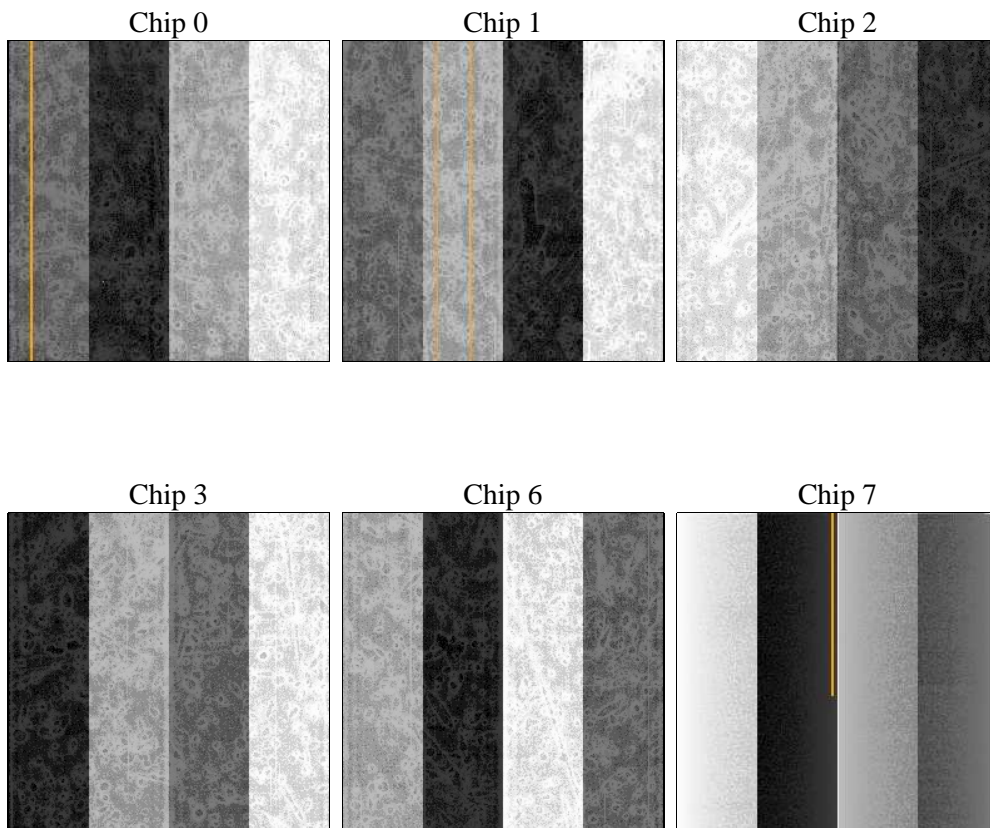
2 OBI

2.1 OBI

2.1.1 Images



2.1.2 Bias



2.1.3 Parameters

obi_num	0	Obi number	sched_exp_time	9500.000000	[s] Scheduled observation exposure time
ascdsver	8.4.5	Processing system revision	ontime	9776.0000090897	Sum of GTIs [s]
caldsver	4.5.1.1	 	ontime0	9772.7590488493	Sum of GTIs [s]
date	2012-08-25T20:39:02	Date and time of file creation	ontime1	9772.7590189278	Sum of GTIs [s]
revision	4	Processing version of data	ontime2	9776.0000090897	Sum of GTIs [s]
			ontime3	9776.0000090897	Sum of GTIs [s]
			ontime6	9776.0000090897	Sum of GTIs [s]
			ontime7	9776.0000090897	Sum of GTIs [s]
			l1events	436361	Number of level 1 events

2.1.4 Events

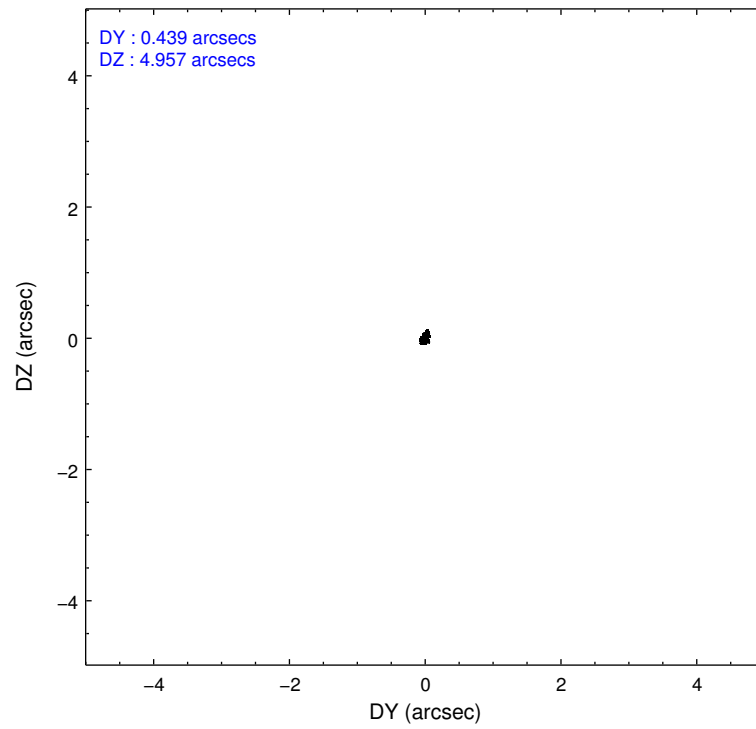
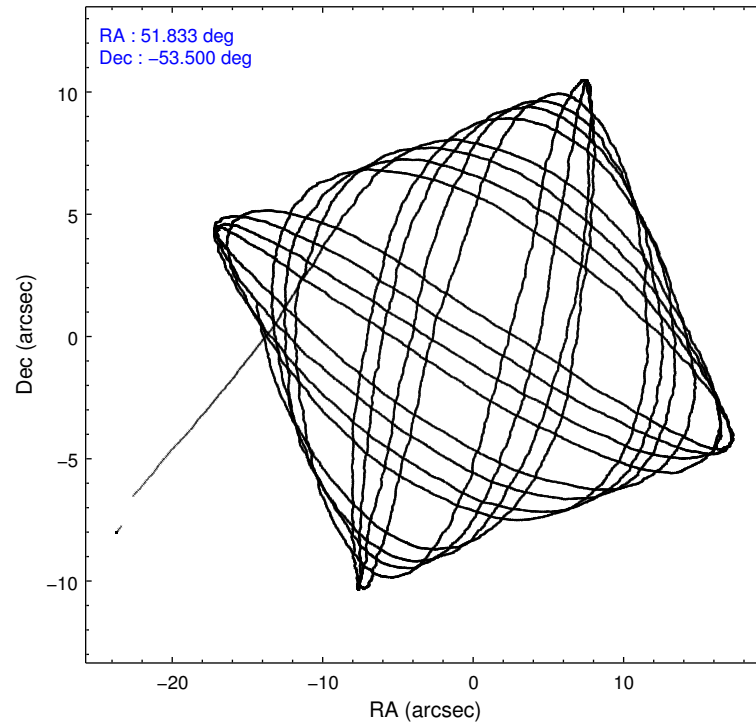
	ccd 0	ccd 1	ccd 2	ccd 3	ccd 6	ccd 7		ccd 0	ccd 1	ccd 2	ccd 3	ccd 6	ccd 7
level 1 events	65153	68564	72045	74733	73070	82796	grade 0 events	3533	4221	3900	3501	3208	3425
rejected events	57346	59582	63911	66930	65276	47894		5%	6%	5%	4%	4%	4%
rejected %	88%	86%	88%	89%	89%	57%	grade 1 events	30	44	34	25	29	70
								0%	0%	0%	0%	0%	0%
							grade 2 events	1527	1582	1554	1487	1567	6872
								2%	2%	2%	1%	2%	8%
							grade 3 events	784	908	758	756	767	3251
								1%	1%	1%	1%	1%	3%
							grade 4 events	754	907	711	743	782	3287
								1%	1%	0%	0%	1%	3%
							grade 5 events	2214	2429	2105	2427	2581	8000
								3%	3%	2%	3%	3%	9%
							grade 6 events	1211	1367	1214	1317	1472	18076
								1%	1%	1%	1%	2%	21%
							grade 7 events	55100	57106	61769	64477	62664	39815
								84%	83%	85%	86%	85%	48%

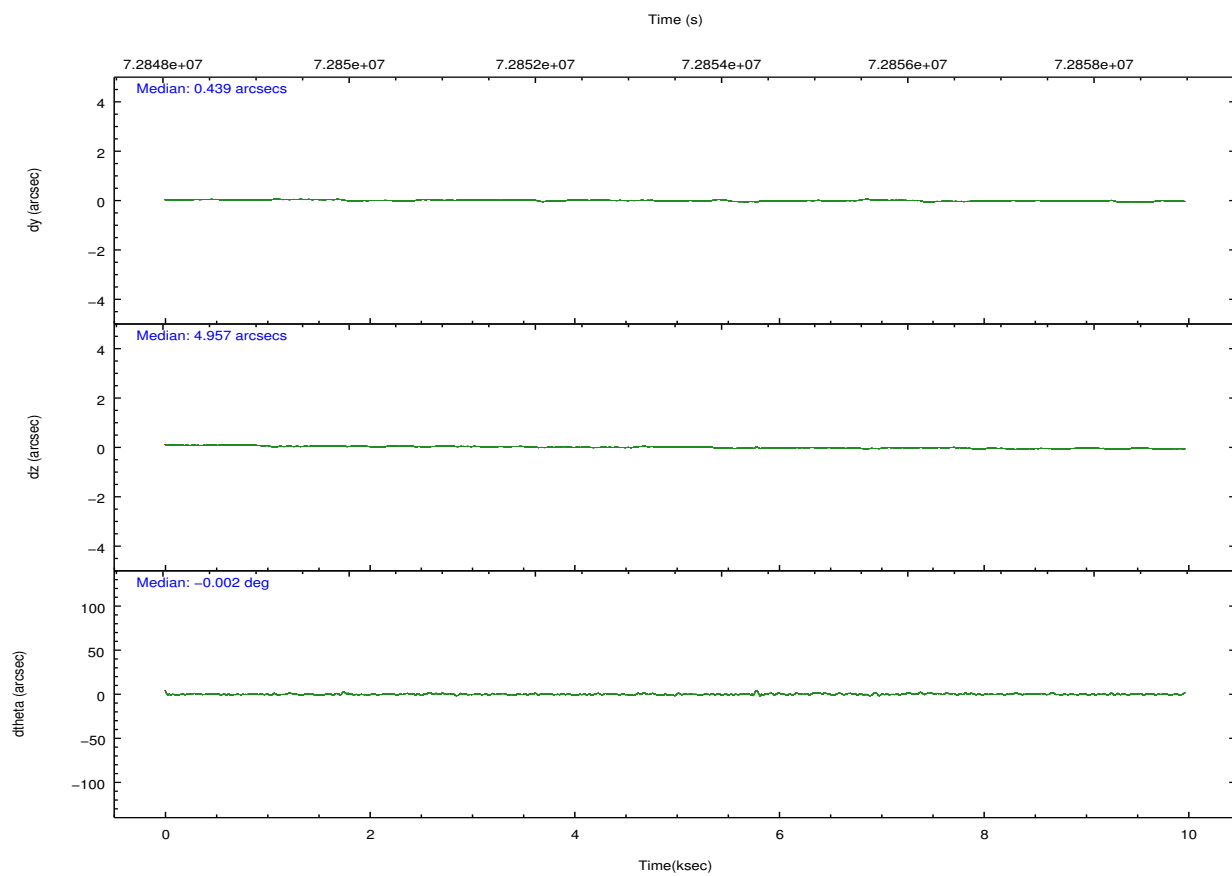
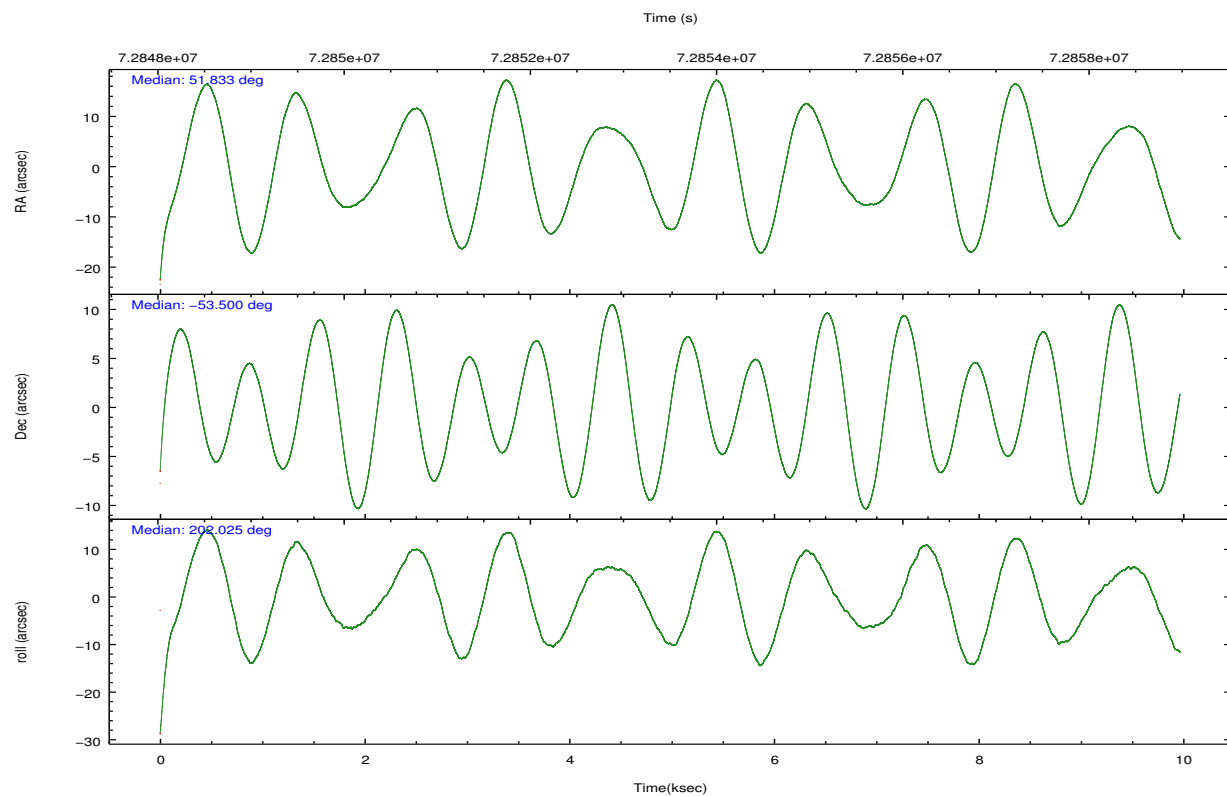
2.2 Compared Parameters

Parameter	Planned	Actual
Instrument	ACIS	ACIS
Detector	ACIS-012367	ACIS-012367
Grating	NONE	NONE
Data mode	VFAINT	VFAINT
Observation mode	POINTING	POINTING
[deg] Pointing RA	51.862029	51.83322230684583
[deg] Pointing Dec	-53.478260	-53.49991522344854
[deg] Pointing Roll	201.844878	202.0303913380639
[mm] SIM focus pos	-0.782348	-0.7809083437167272
[mm] SIM defocus	0	0.001439871863259334
[mm] SIM translation stage pos	-233.592463	-233.5874344608287
[mm] SIM translation stage offset	0	-0.005018542100998502
[s] Observation start time (MET)	72848983.184000	72847698.53344101
Observation start date	2000-04-23T03:48:39	2000-04-23T03:28:18
[s] Observation end time (MET)	72858483.184000	72859028.37135699
Observation end date	2000-04-23T06:26:59	2000-04-23T06:37:08
Read mode	TIMED	TIMED

Parameter	Planned	Actual
Obspar format version number	7	7
Obspar file type	PREDICTED	ACTUAL
Obspar update status	NONE	UPDATED
Number of optional ACIS chips dropped	0	0
On-chip summing requested	N	N
Subarray requested	NONE	NONE
Alternating exposures requested	N	N
[s] Primary exposure time	0.000000	3.2

2.3 Aspect



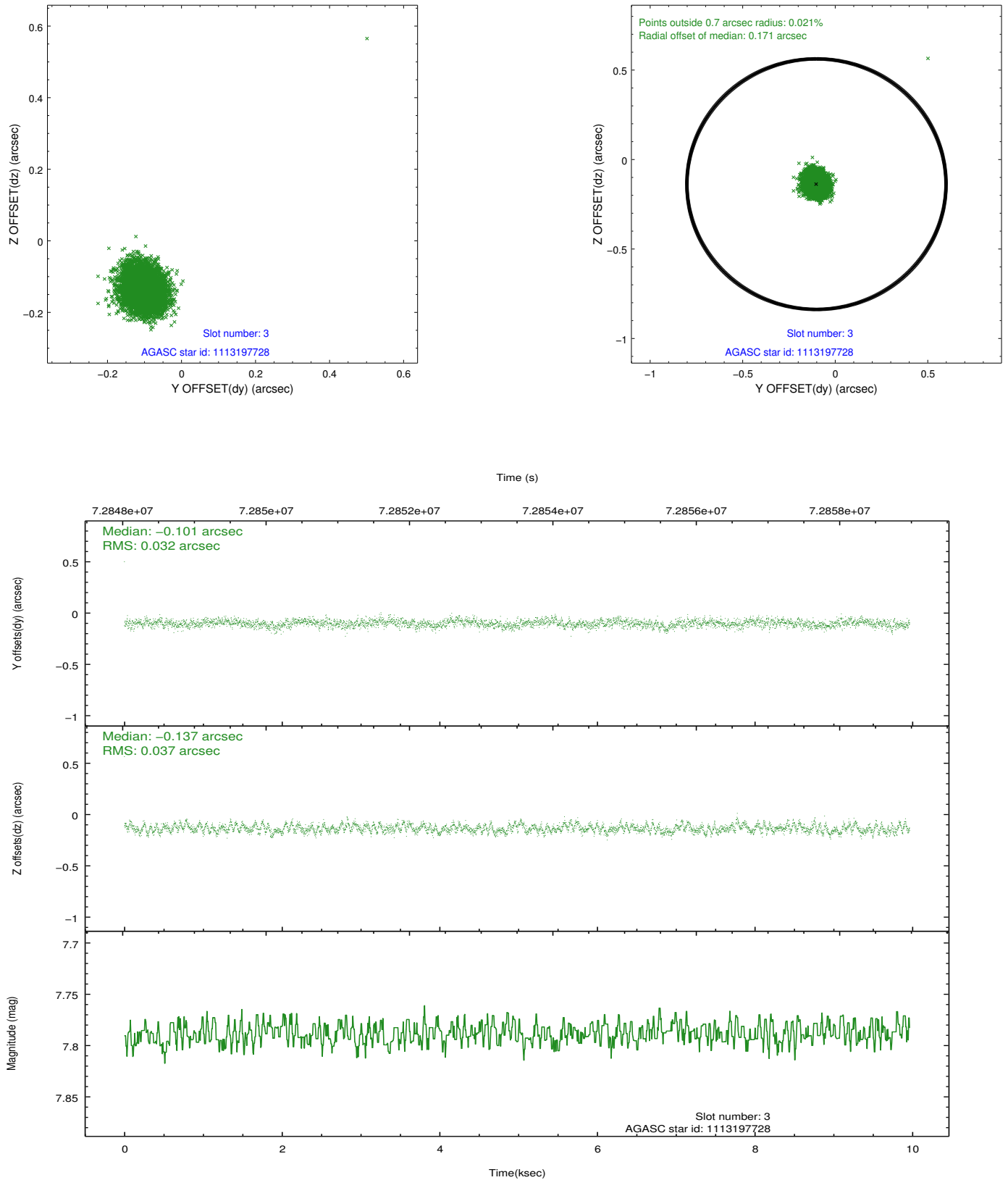


Slot Statistics

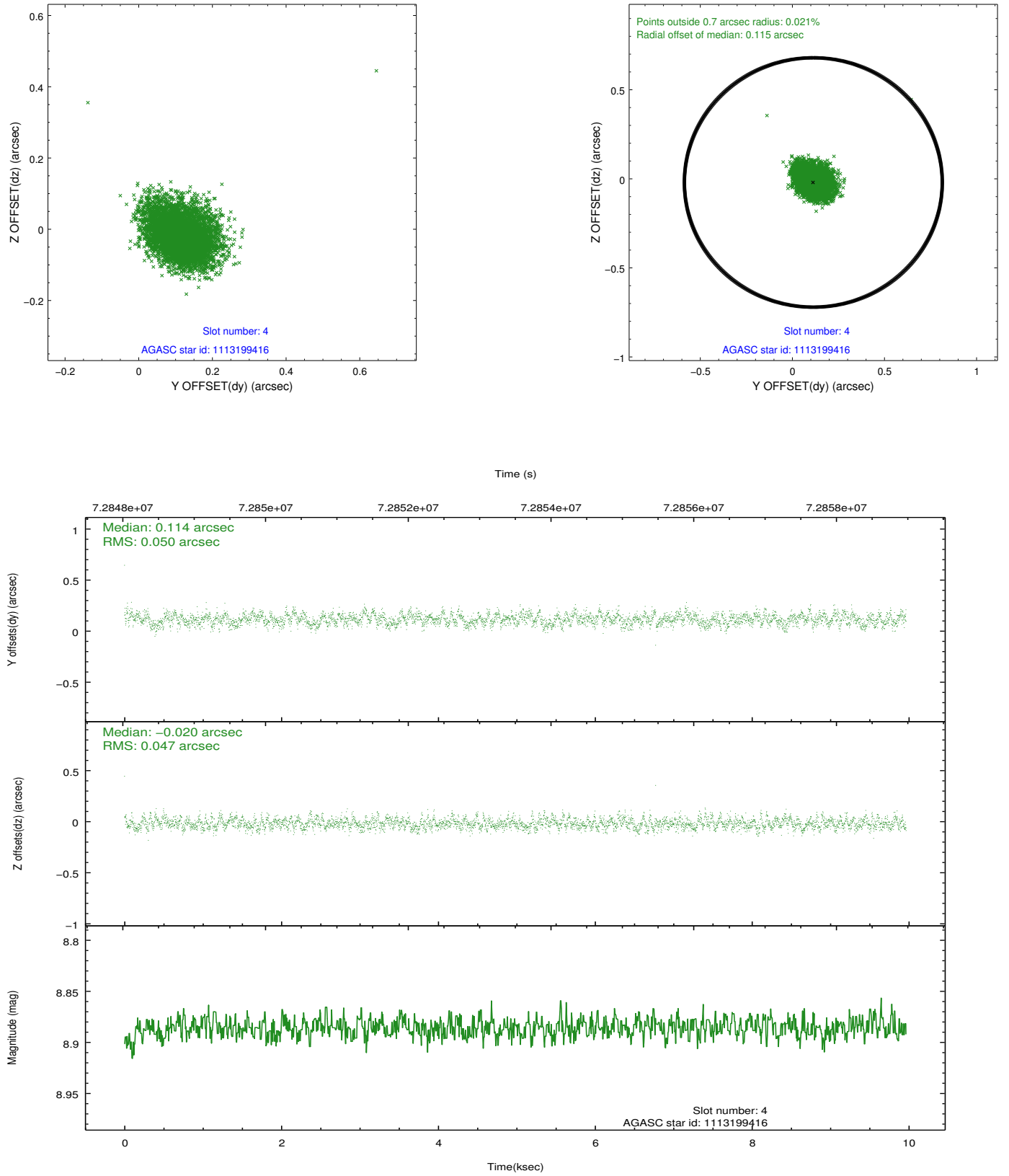
slot	status	id	mag	n_pts	med_dy	med_dz	dr1	dr2	ra	dec	mean_y	mean_z
0	FID	ACIS-I-2	7.15	2430	-0.023	-0.023	0.009	0.015	0.000000	0.000000	-754.78	-834.68
1	FID	ACIS-I-4	7.19	2429	-0.043	0.029	0.007	0.012	0.000000	0.000000	2159.03	1071.26
2	FID	ACIS-I-5	7.23	2431	-0.035	0.063	0.009	0.015	0.000000	0.000000	-1807.92	1069.77
3	GUIDE	1113197728	7.79	4862	-0.101	-0.137	0.050	0.080	51.747237	-53.564040	342.32	195.43
4	GUIDE	1113199416	8.89	4861	0.114	-0.020	0.072	0.119	53.012594	-53.597967	-2114.06	1332.96
5	GUIDE	1113199808	9.42	4856	0.005	0.026	0.073	0.122	52.027175	-53.115673	-817.46	-1078.14
6	GUIDE	1113199680	9.54	4859	0.026	0.026	0.087	0.140	51.911788	-53.818360	356.84	1175.71
7	GUIDE	1113195656	9.75	4833	-0.044	0.107	0.117	0.190	50.730457	-53.431690	2197.26	-1040.25

2.4 Star Slots

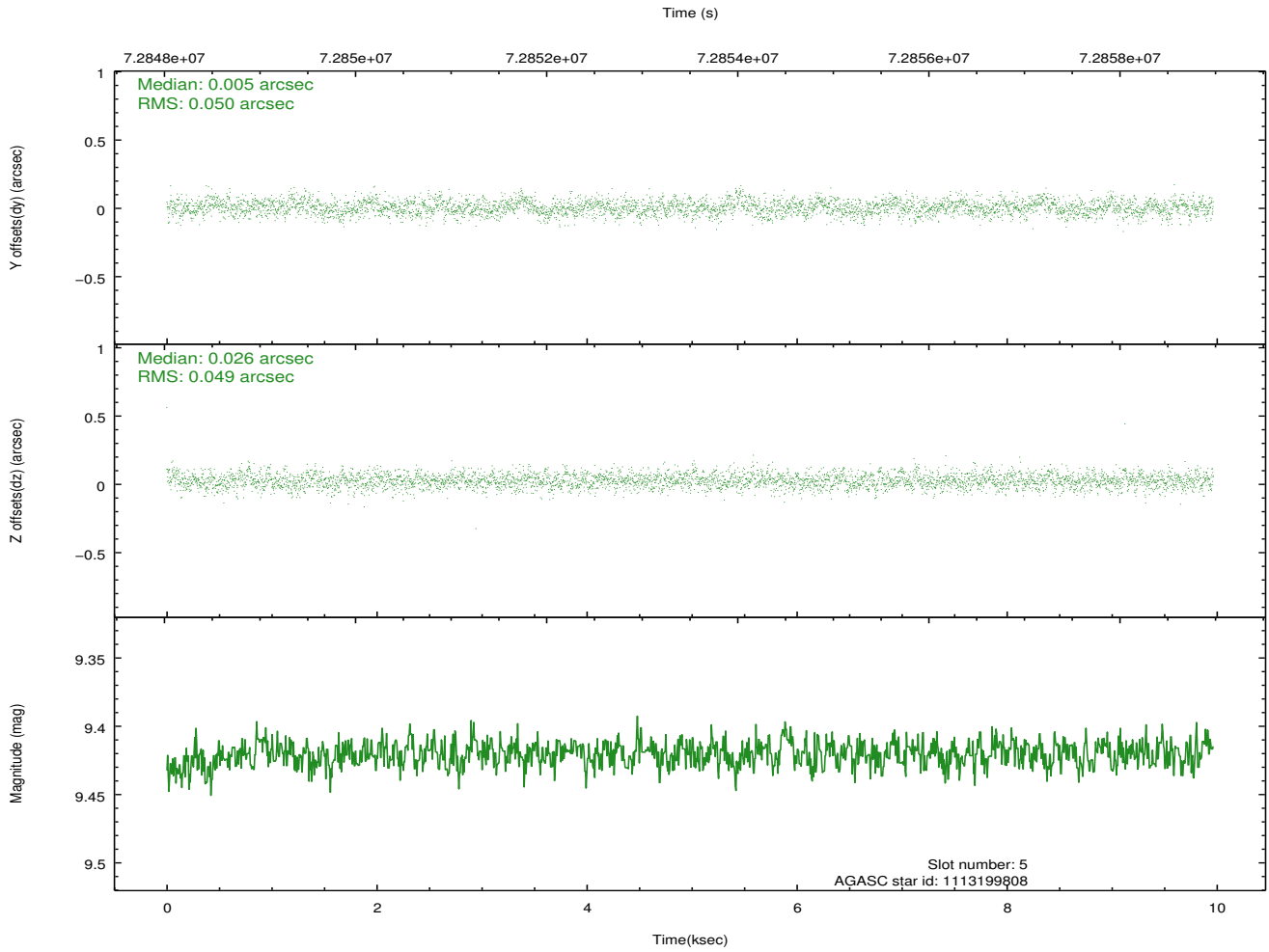
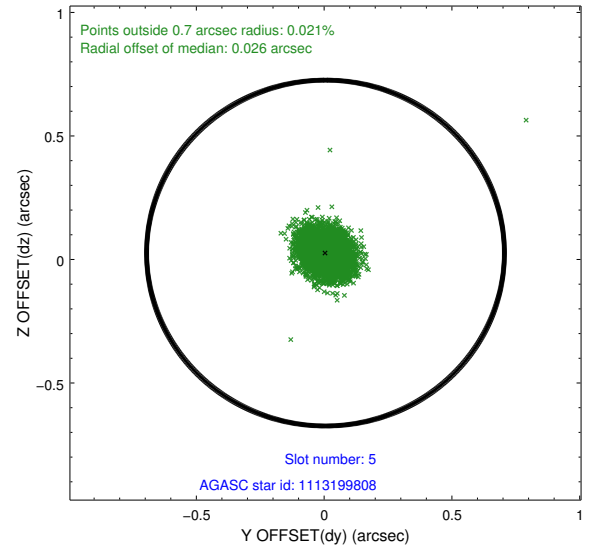
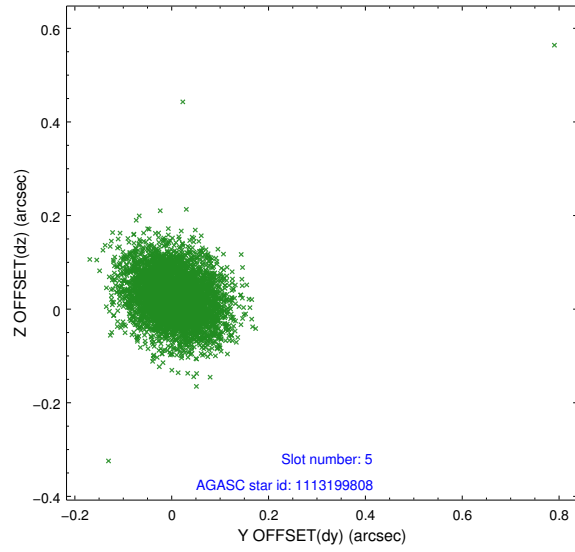
2.4.1 Slot 3



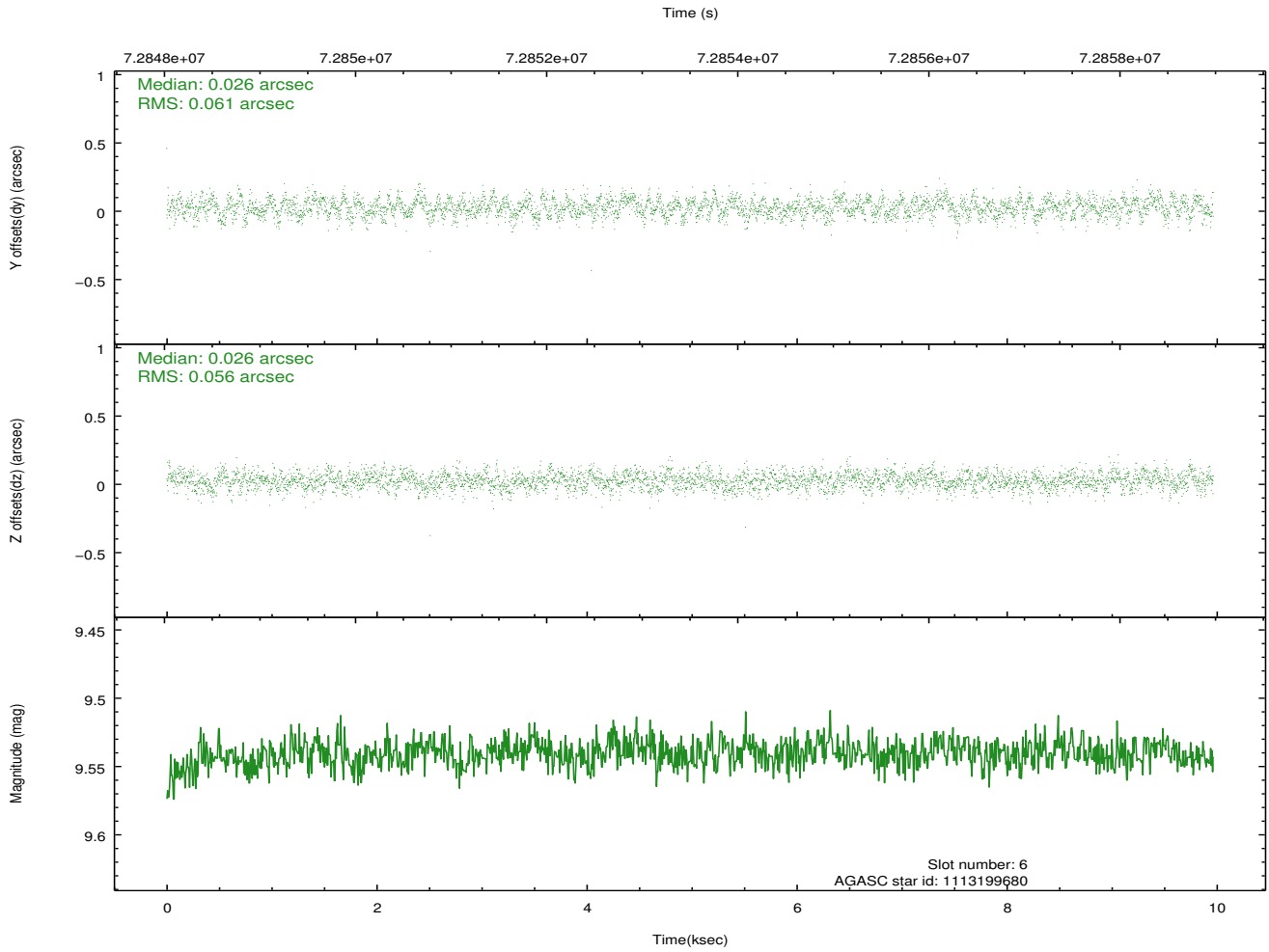
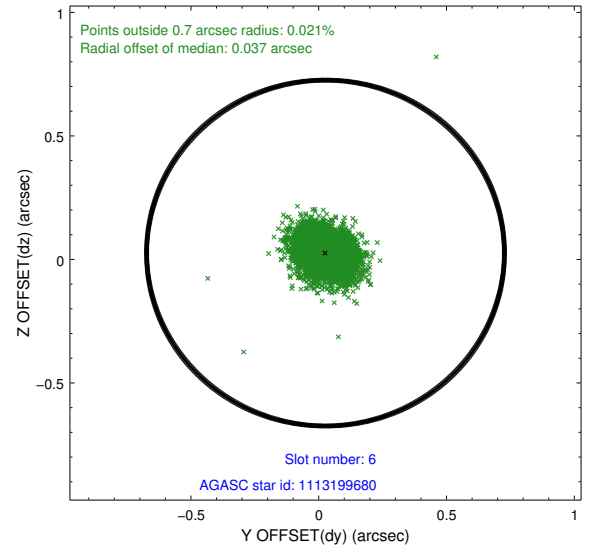
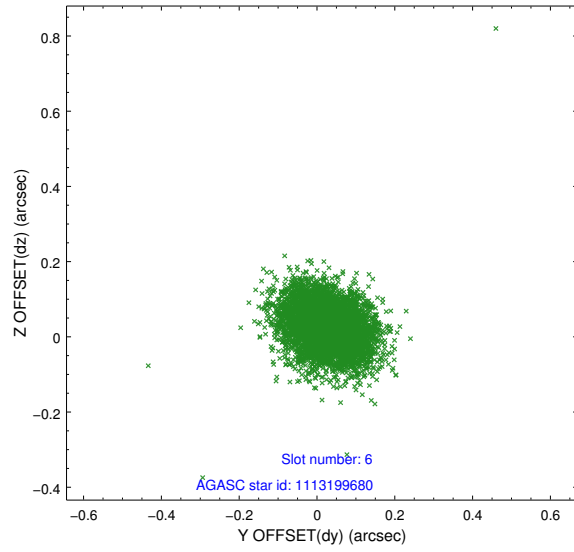
2.4.2 Slot 4



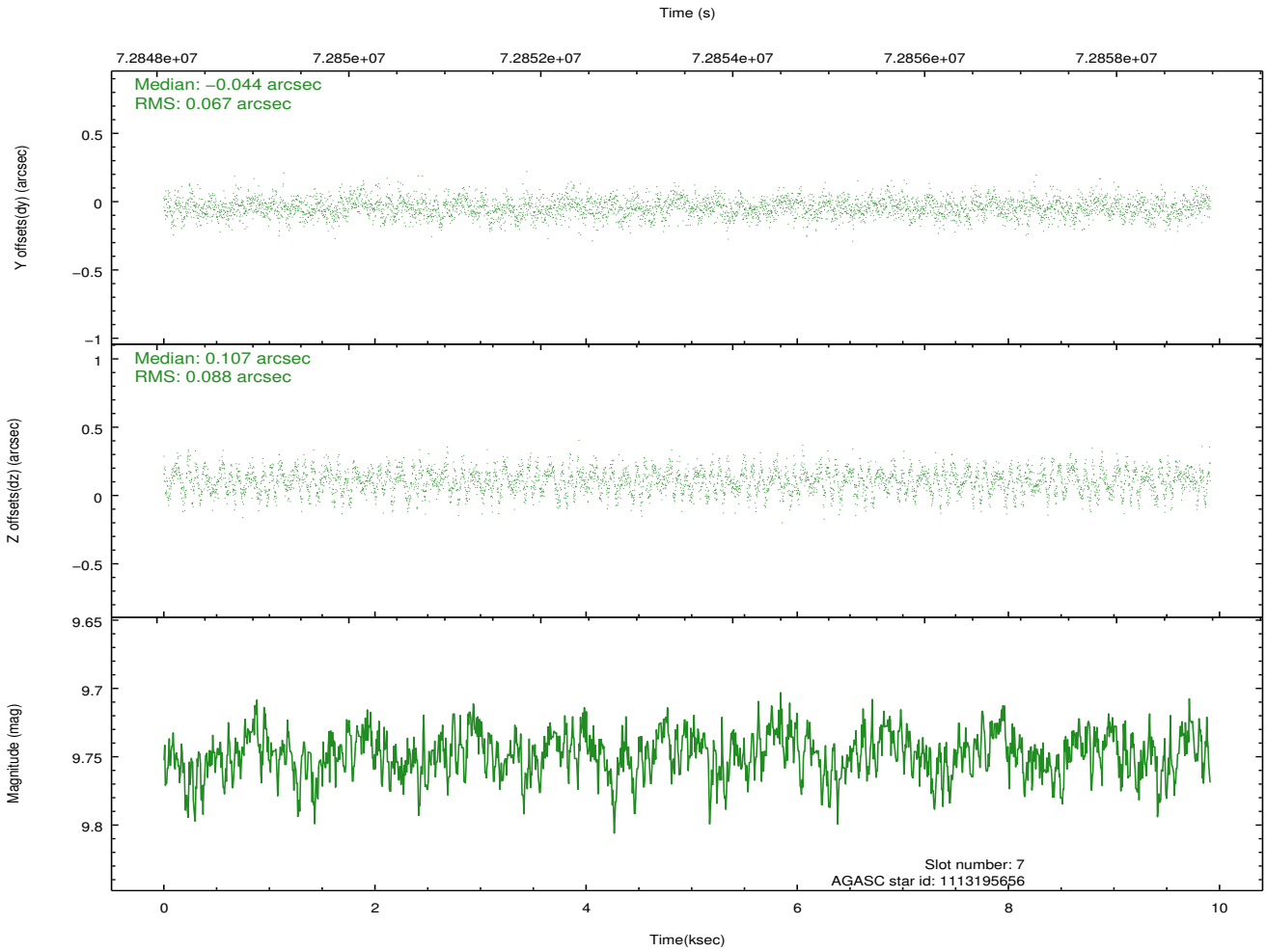
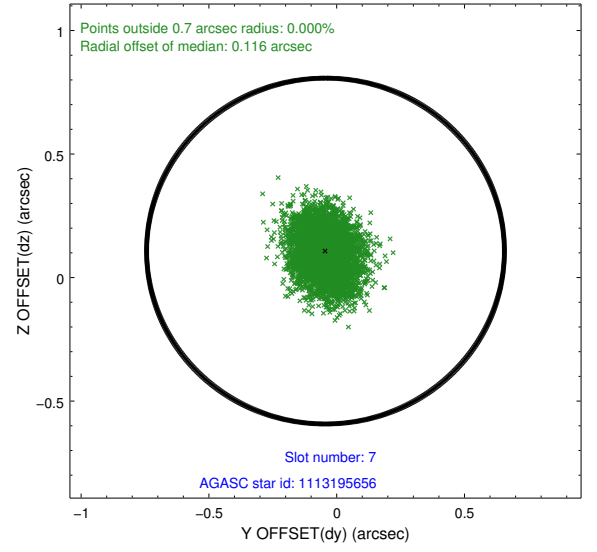
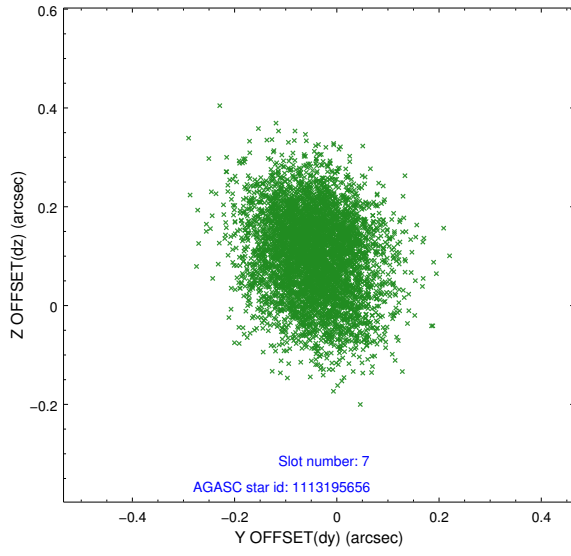
2.4.3 Slot 5



2.4.4 Slot 6

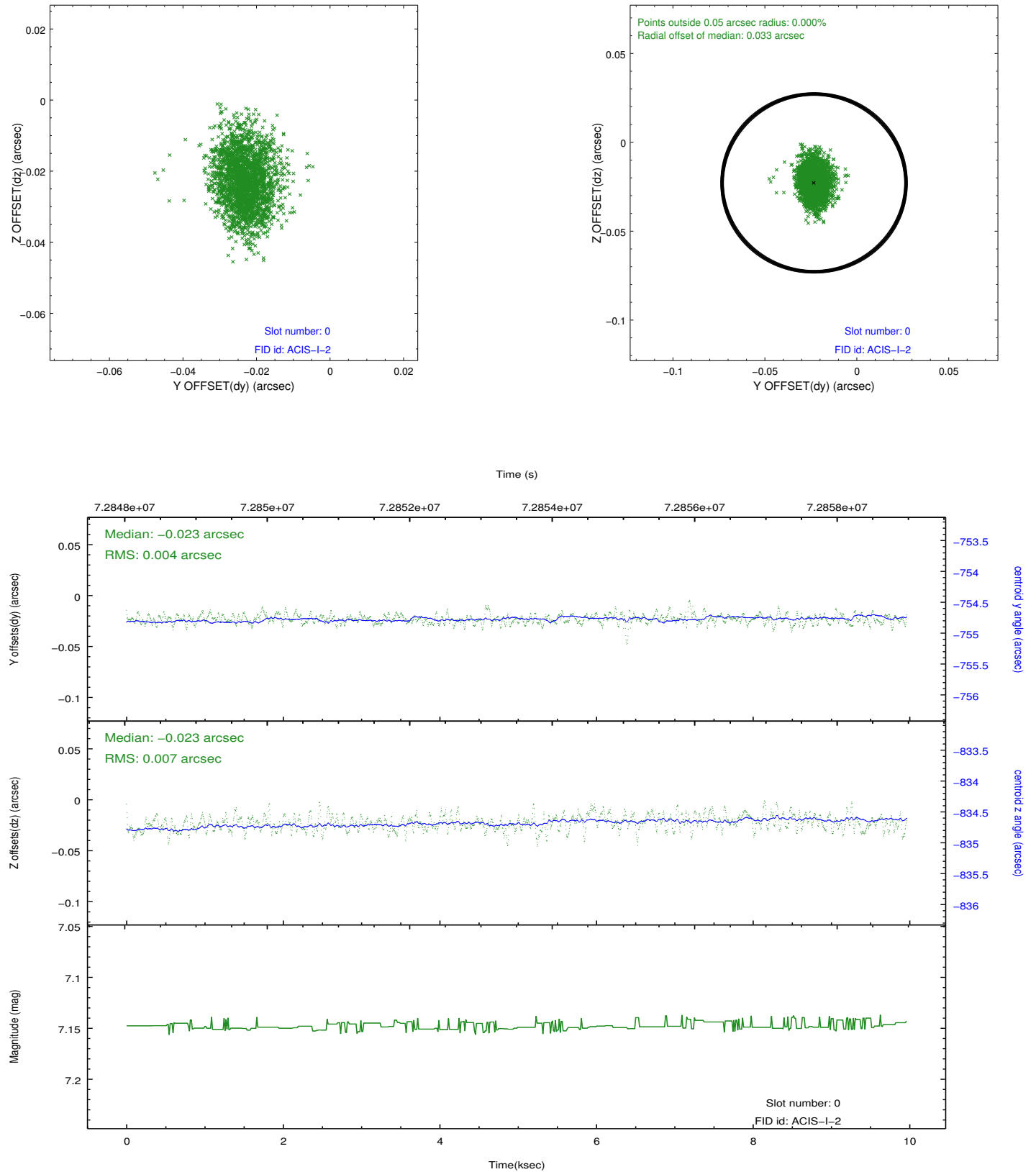


2.4.5 Slot 7

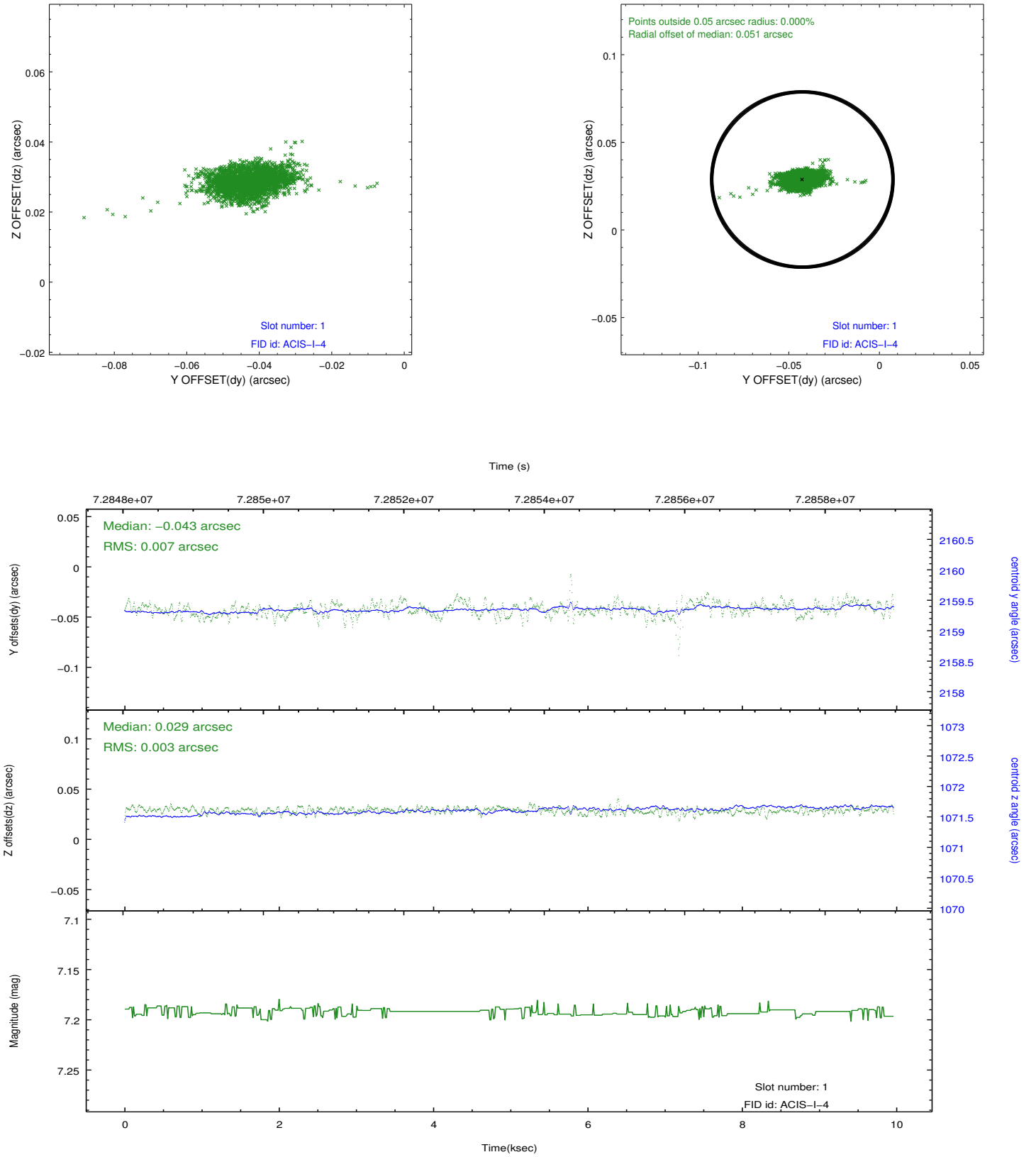


2.5 FID Slots

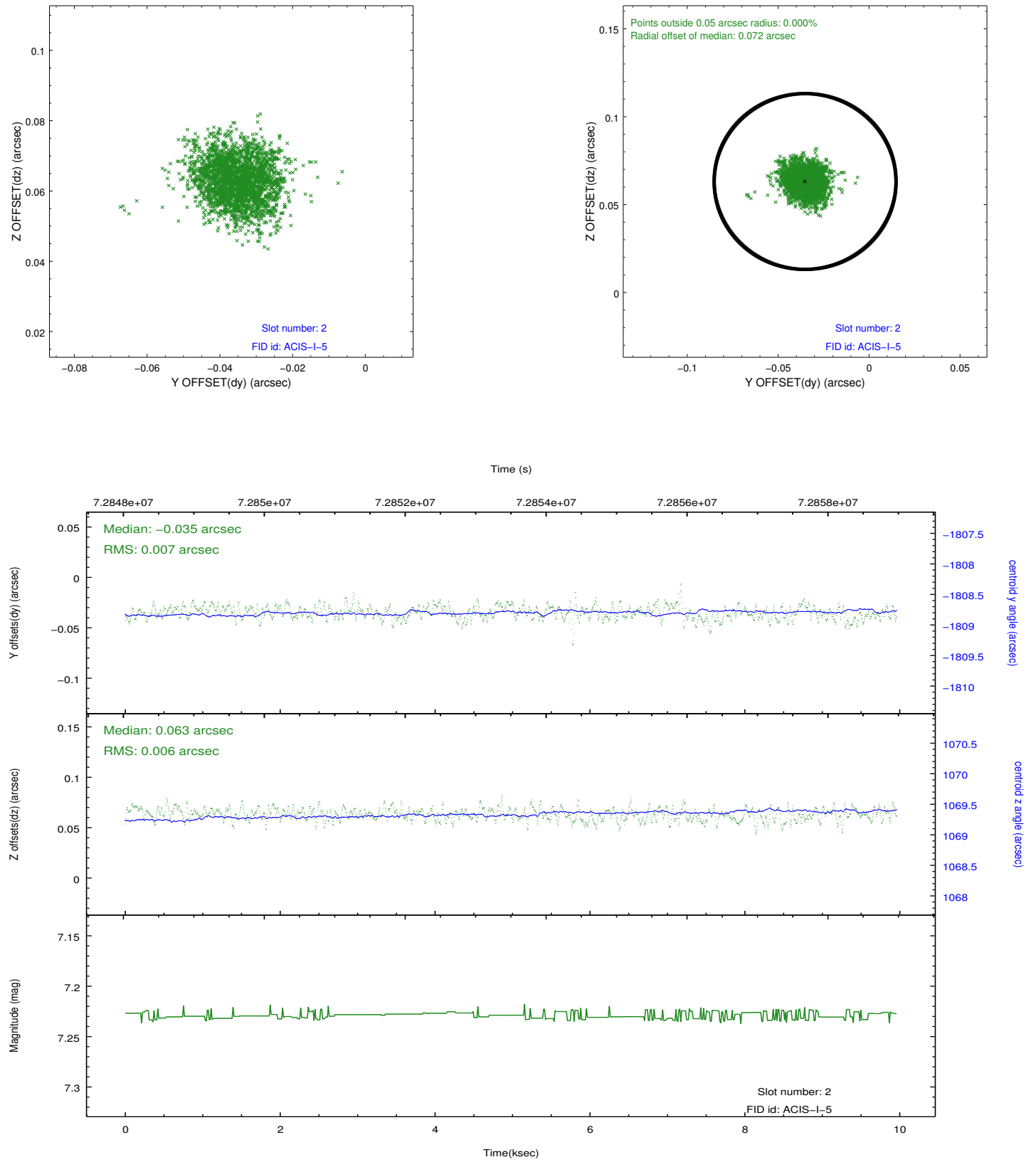
2.5.1 Slot 0



2.5.2 Slot 1



2.5.3 Slot 2



A Summary

A.1 Status

V&V Scientist	Jen Lauer
V&V Date (YYYY-MM-DD)	2012.08.28
V&V Edition	1
V&V Disposition and Status	OK
V&V Charge Time	9.779

A.2 Comments