

V&V Reference Report

L2 ASCDS Version : 7.6.10

Observation 552 - L2 Version 001
Chandra X-Ray Center

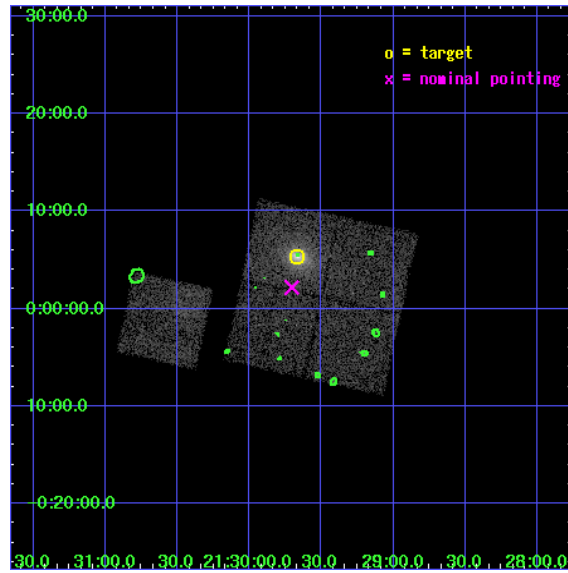
L2 Processing Date : Jun 12 2007

Contents

1	Front	2
2	OBI	3
2.1	OBI	3
2.1.1	Images	3
2.1.2	Bias	3
2.1.3	Parameters	4
2.1.4	Events	4
2.2	Compared Parameters	5
2.3	Aspect	6
2.4	Star Slots	9
2.4.1	Slot 3	9
2.4.2	Slot 4	10
2.4.3	Slot 5	11
2.4.4	Slot 6	12
2.4.5	Slot 7	13
2.5	FID Slots	14
2.5.1	Slot 0	14
2.5.2	Slot 1	15
2.5.3	Slot 2	16
3	Point Sources	17
A	Summary	18
A.1	Status	18
A.2	Comments	18

1 Front

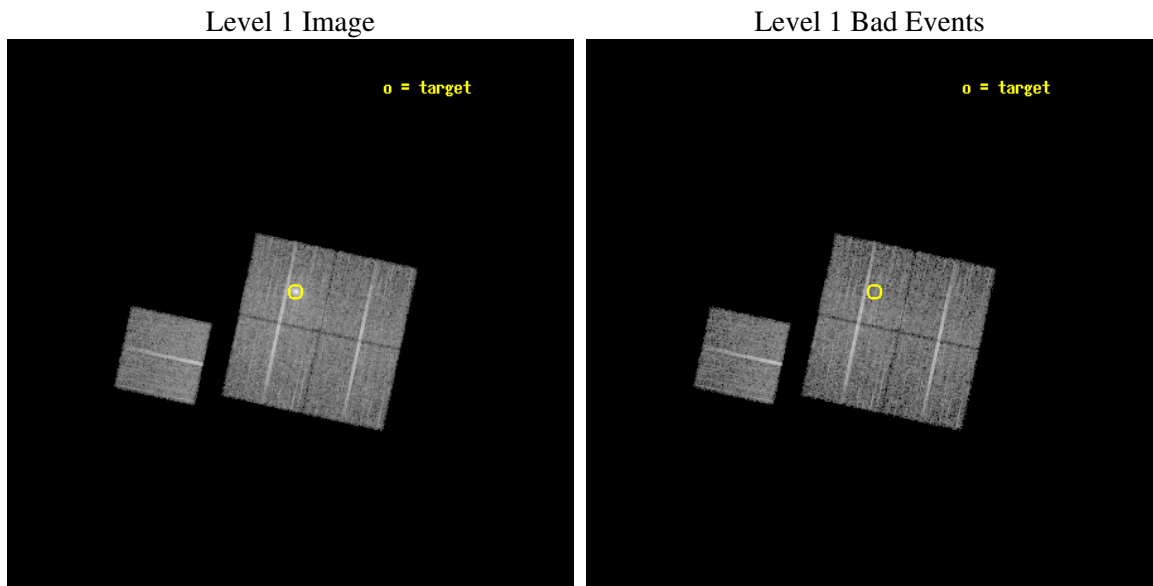
seq_num	800060
obs_id	552
title	DETERMINATION OF H0/Q0
observer	DR. LEON VANSPEYBROECK
object	RX J2129.6+0005
dtcycle	0
cycle	P
ra_targ	322.416608
dec_targ	0.089931
ra_nom	322.42619567468
dec_nom	0.036207291780532
roll_nom	282.29386399964
revision	2
ontime	10089.600009397
livetime	9961.8394188499
ontime0	10089.600009397
ontime1	10089.600009397
ontime2	10089.600009397
ontime3	10089.600009397
ontime6	10089.600009397
l2events	40818



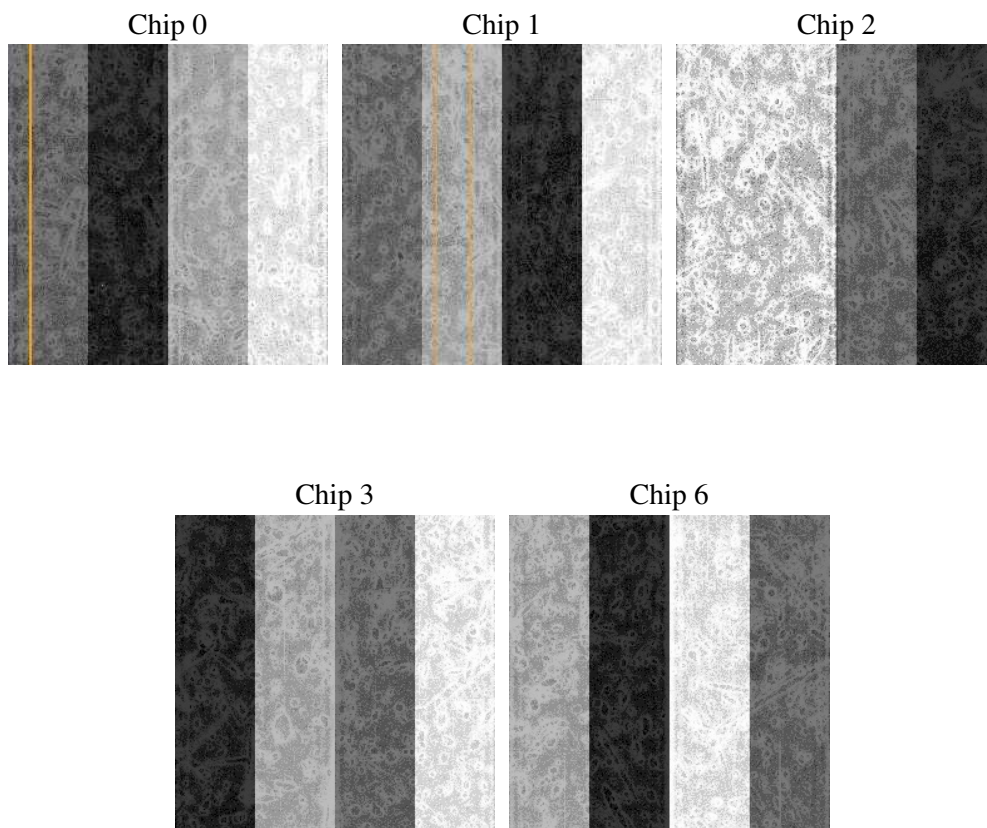
2 OBI

2.1 OBI

2.1.1 Images



2.1.2 Bias



2.1.3 Parameters

obi_num	0
ascdsver	7.6.10
caldsver	3.4.0
date	2007-06-12T13:50:03
revision	2

sched_exp_time	10000.000000
ontime	10089.600009397
ontime0	10089.600009397
ontime1	10089.600009397
ontime2	10089.600009397
ontime3	10089.600009397
ontime6	10089.600009397
l1events	318632

2.1.4 Events

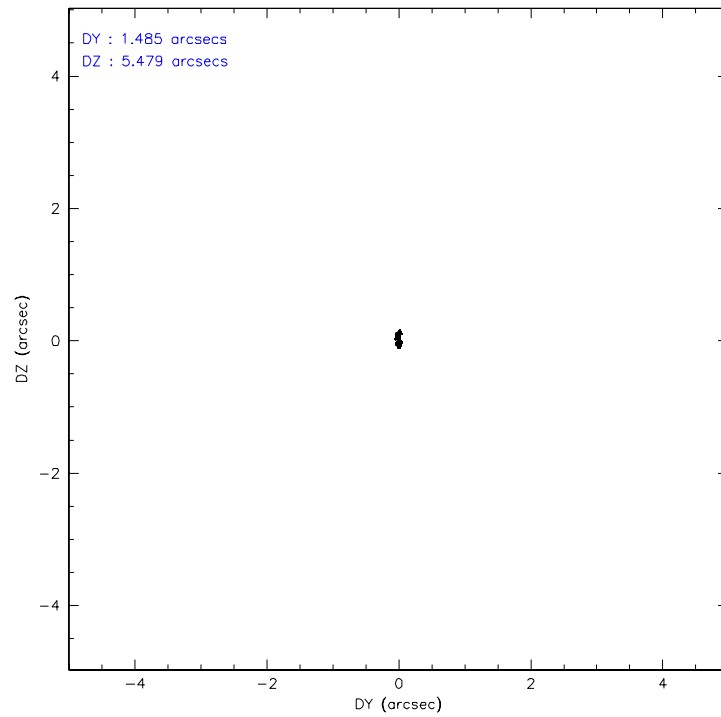
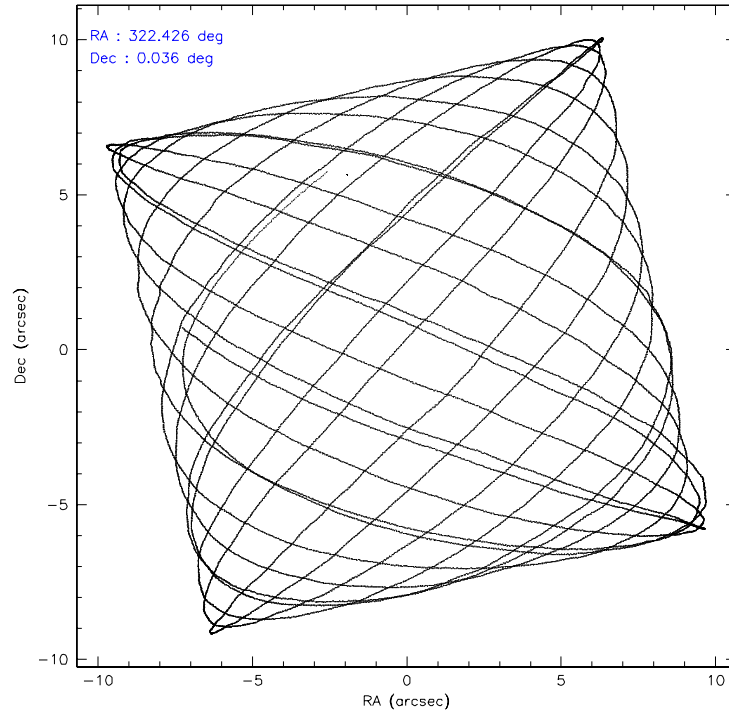
	ccd 0	ccd 1	ccd 2	ccd 3	ccd 6
level 1 events	58398	58464	64438	73147	64185
rejected events	51070	50571	57411	56529	56511
rejected %	87%	86%	89%	77%	88%

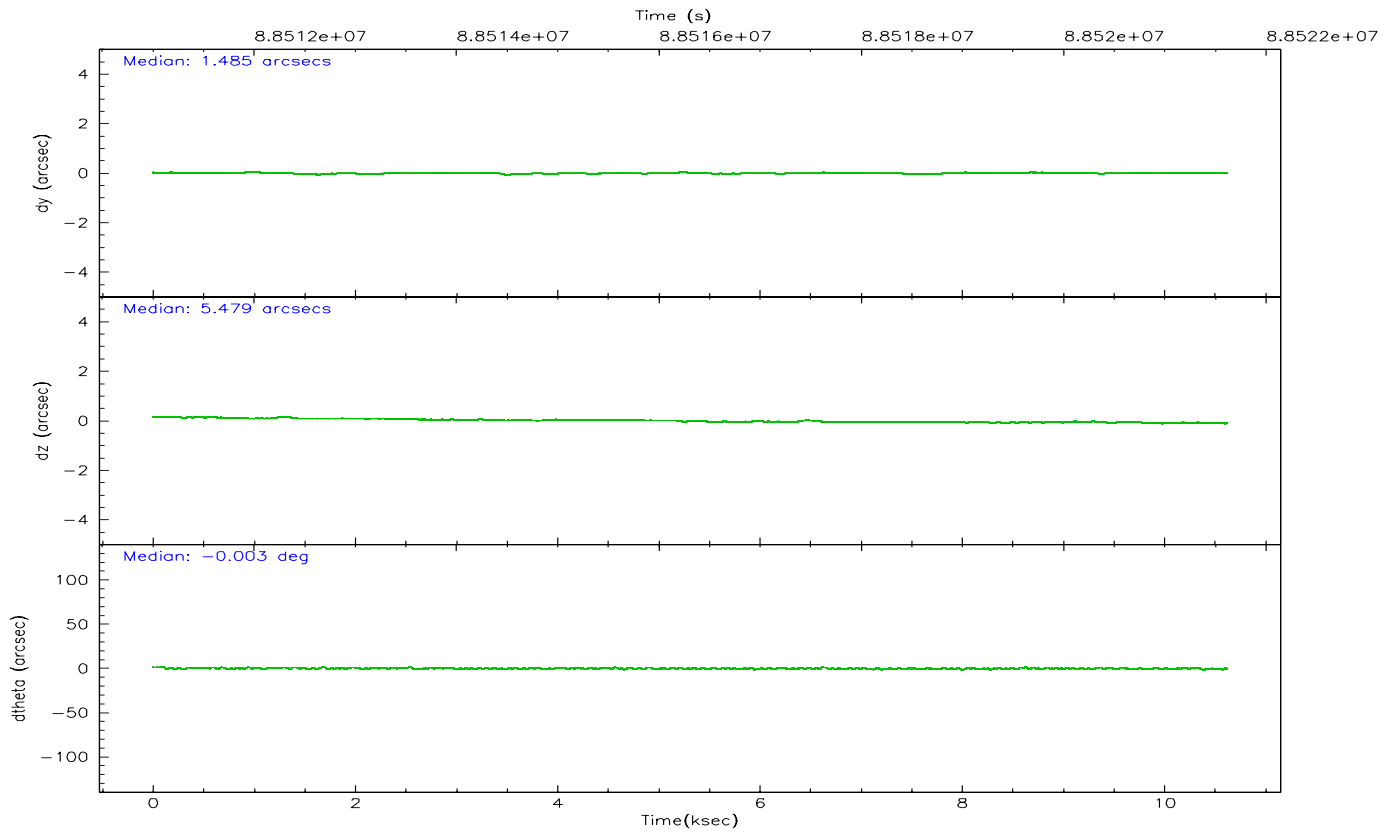
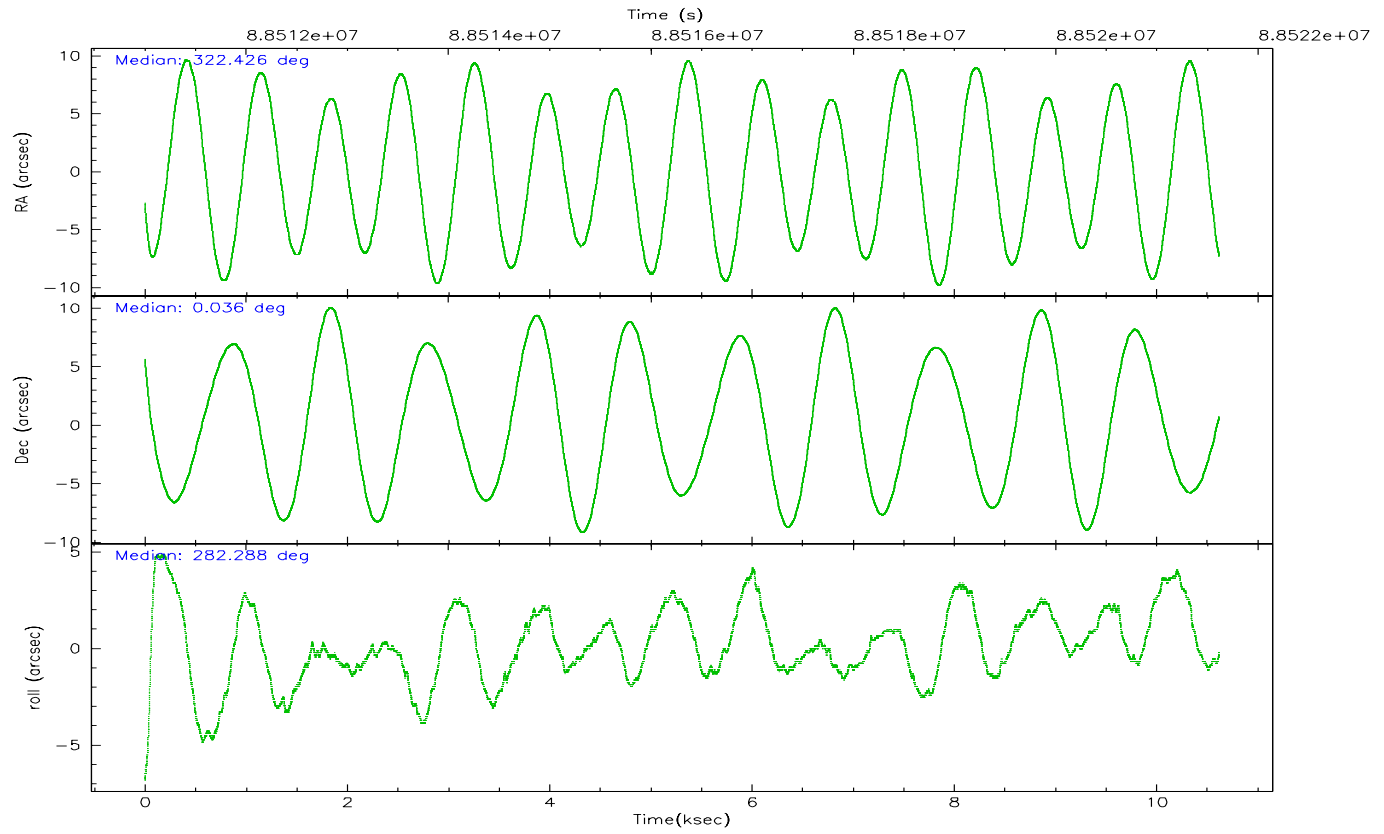
	ccd 0	ccd 1	ccd 2	ccd 3	ccd 6
grade 0 events	3132	3332	3091	11056	3461
	5%	5%	4%	15%	5%
grade 1 events	24	35	32	61	26
	0%	0%	0%	0%	0%
grade 2 events	1562	1540	1448	2275	1401
	2%	2%	2%	3%	2%
grade 3 events	713	773	705	937	758
	1%	1%	1%	1%	1%
grade 4 events	671	812	672	885	713
	1%	1%	1%	1%	1%
grade 5 events	2129	2315	2051	2351	2462
	3%	3%	3%	3%	3%
grade 6 events	1253	1438	1114	1472	1343
	2%	2%	1%	2%	2%
grade 7 events	48914	48219	55325	54110	54021
	83%	82%	85%	73%	84%

2.2 Compared Parameters

Parameter	Planned	Actual	Parameter	Planned	Actual
Instrument	ACIS	ACIS	Obspar format version number	6	6
Detector	ACIS-01236	ACIS-01236	Obspar file type	PREDICTED	ACTUAL
Grating	NONE	NONE	Obspar update status	NONE	UPDATED
Data mode	VFAINT	VFAINT	Number of optional ACIS chips dropped	0	0
Observation mode	POINTING	POINTING	On-chip summing requested	N	N
Pointing RA	322.407710	322.4261956746794	Subarray requested	NONE	NONE
Pointing Dec	0.056668	0.03620729178053228	Alternating exposures requested	N	N
Pointing Roll	282.085201	282.2938639996445	Primary exposure time	3.200000	3.2
SIM focus pos (mm)	-0.782348	-0.7809083437167272			
SIM defocus (mm)	0	0.001439871863259334			
SIM translation stage pos (mm)	-225.840463	-225.8433433320239			
SIM translation stage offset (mm)	-7.752	-7.749109670905796			
Observation start time	88511618.184000	88510442.753224			
Observation start date	2000-10-21T10:32:34	2000-10-21T10:14:02			
Observation end time	88521618.184000	88522487.01617999			
Observation end date	2000-10-21T13:19:14	2000-10-21T13:34:47			
Read mode	TIMED	TIMED			

2.3 Aspect



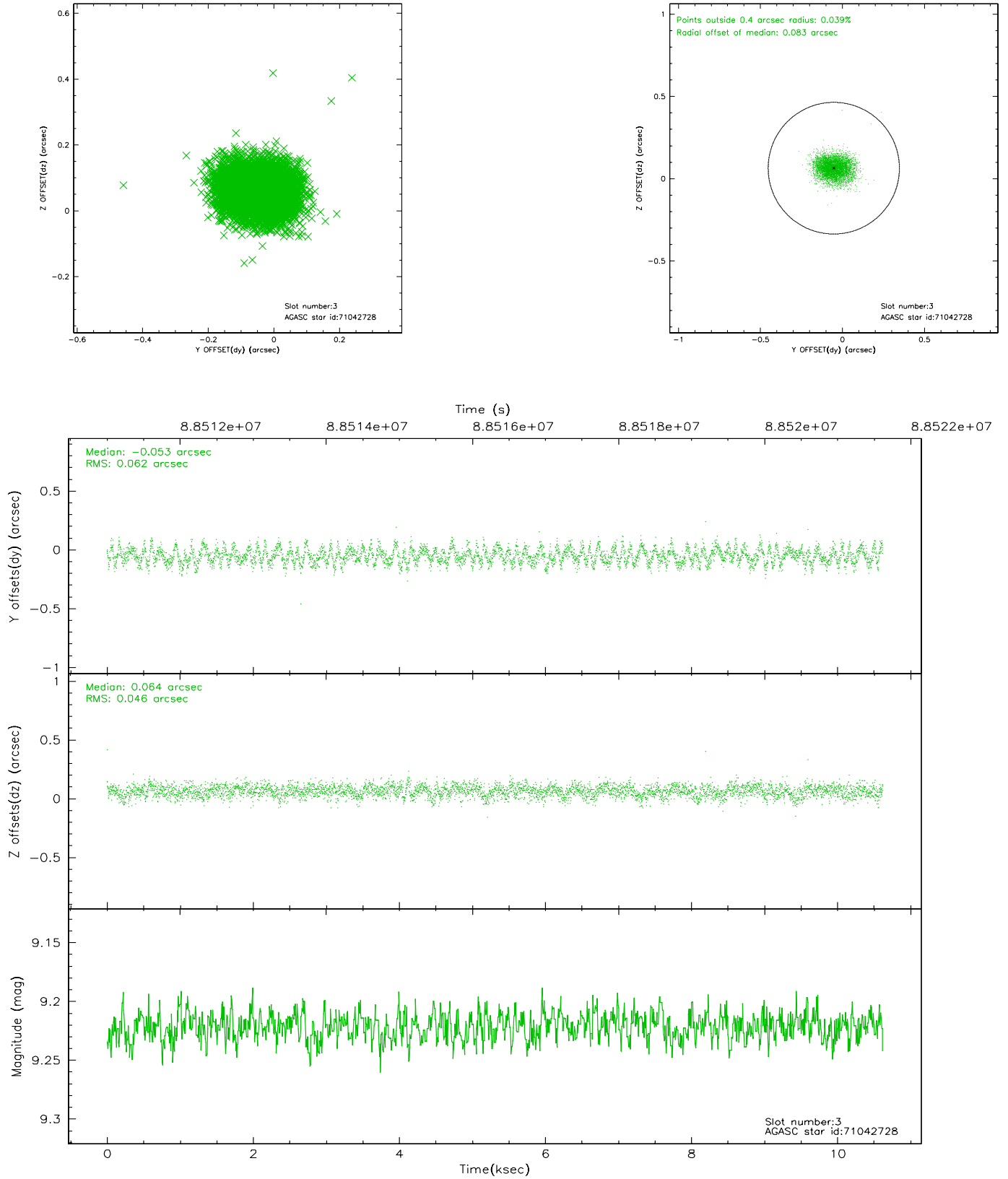


Slot Statistics

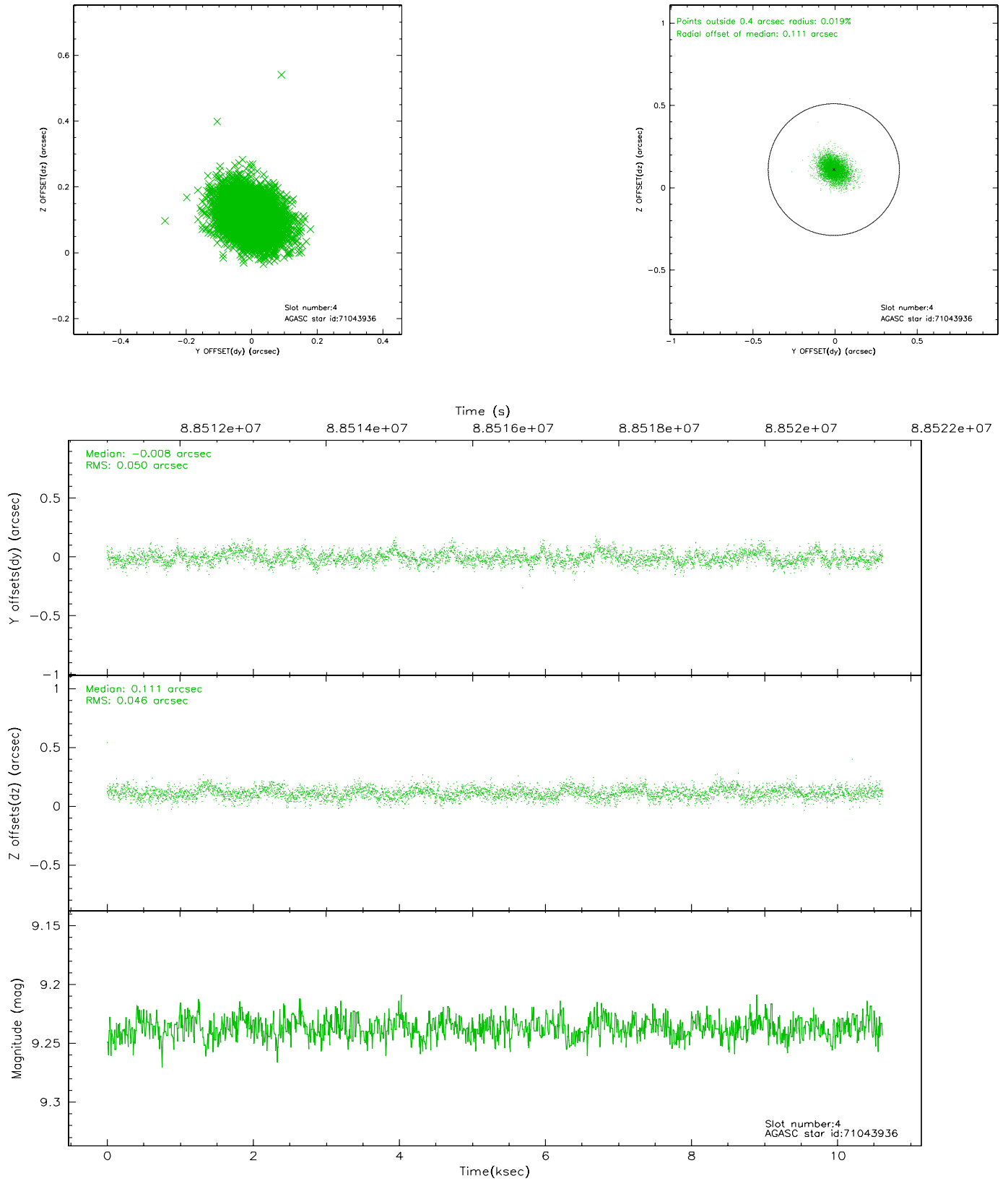
slot	status	id	mag	n_pts	med_dy	med_dz	dr1	dr2	ra	dec	mean_y	mean_z
0	FID	ACIS-I-2	7.17	2591	-0.036	-0.034	0.008	0.014	0.000000	0.000000	-756.39	-993.30
1	FID	ACIS-I-4	7.16	2591	-0.075	0.038	0.005	0.009	0.000000	0.000000	2157.35	912.63
2	FID	ACIS-I-5	7.22	2591	0.009	0.065	0.008	0.014	0.000000	0.000000	-1809.16	910.03
3	GUIDE	71042728	9.22	5180	-0.053	0.064	0.083	0.131	322.833566	0.458135	-1092.48	1801.93
4	GUIDE	71043936	9.24	5178	-0.008	0.111	0.072	0.118	322.677260	0.081826	114.41	968.62
5	GUIDE	69346400	9.35	5182	-0.086	-0.071	0.084	0.134	321.808714	0.369328	-1551.96	-1872.68
6	GUIDE	69341408	9.22	5148	0.072	-0.026	0.077	0.126	322.446246	0.142198	-272.16	200.06
7	GUIDE	680923504	9.49	5179	0.071	-0.078	0.084	0.139	321.970587	-0.475858	1545.50	-1939.73

2.4 Star Slots

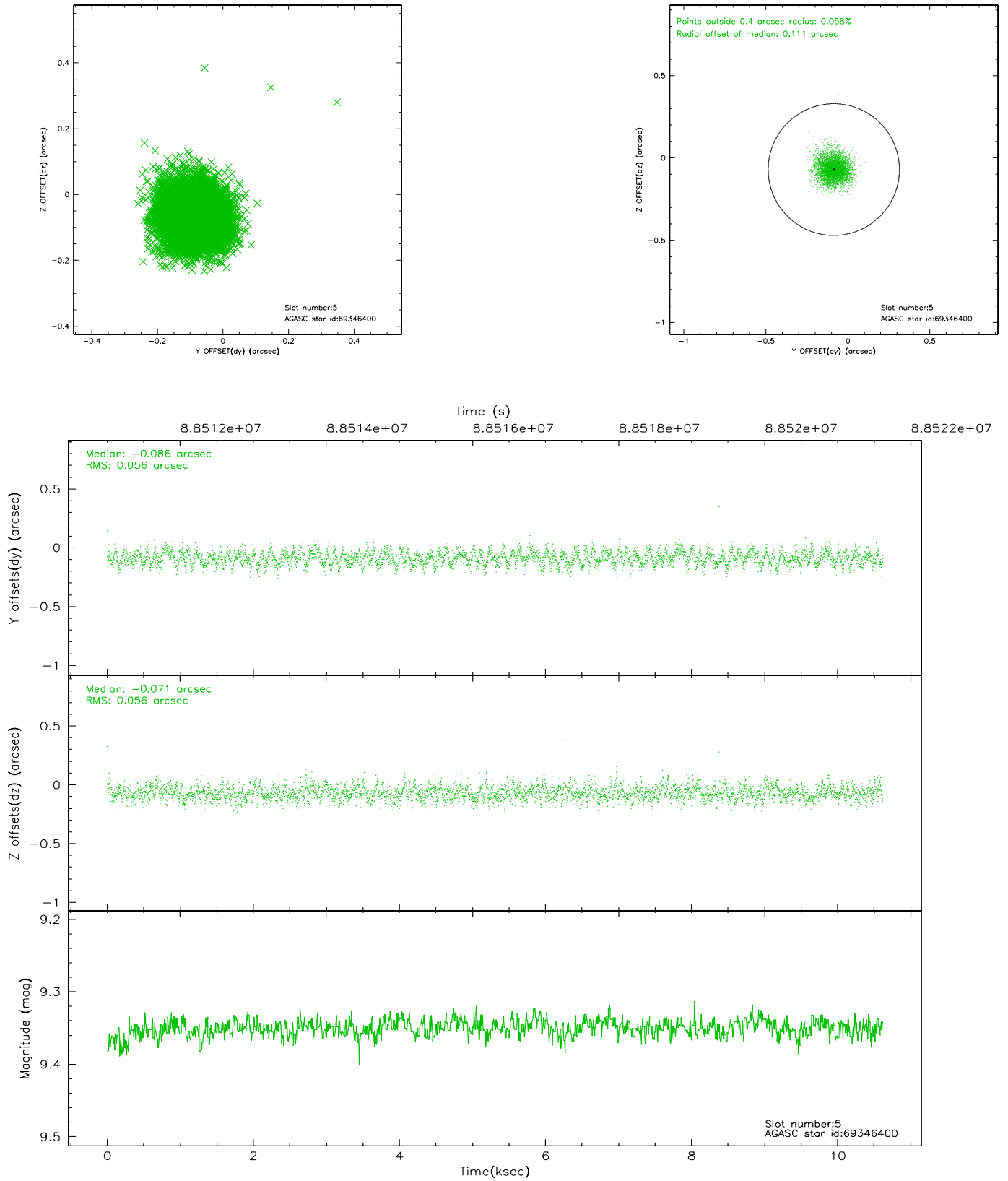
2.4.1 Slot 3



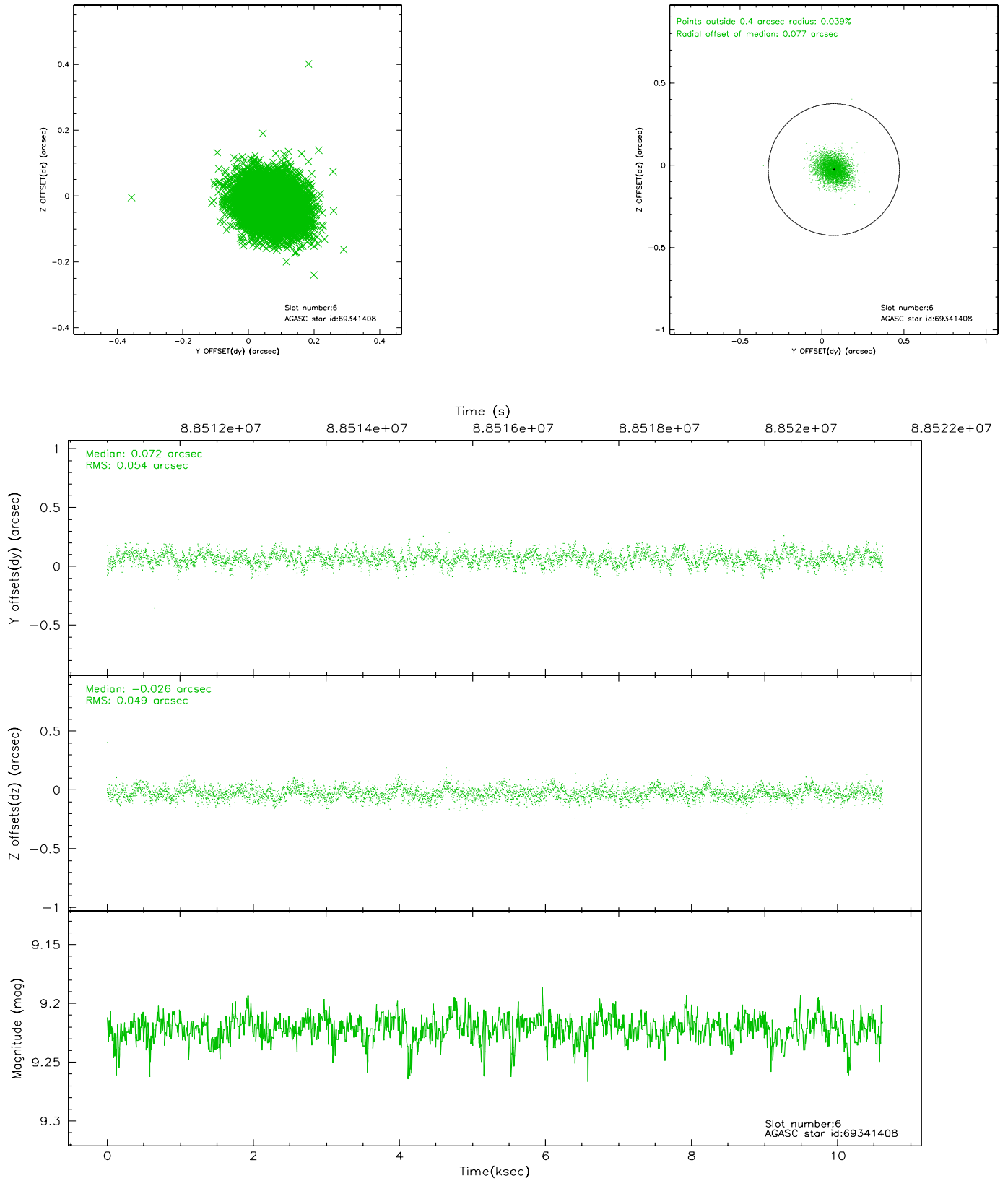
2.4.2 Slot 4



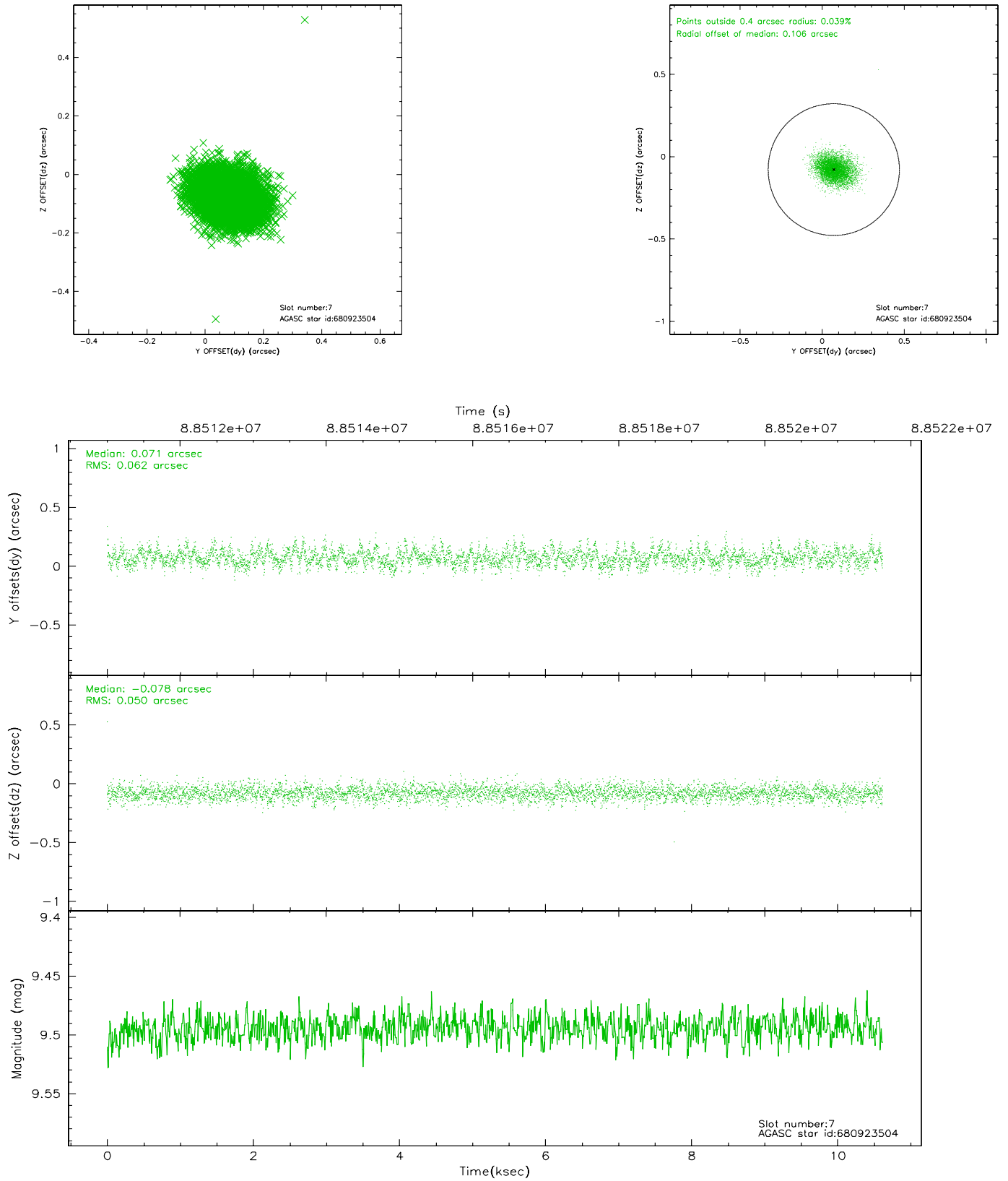
2.4.3 Slot 5



2.4.4 Slot 6

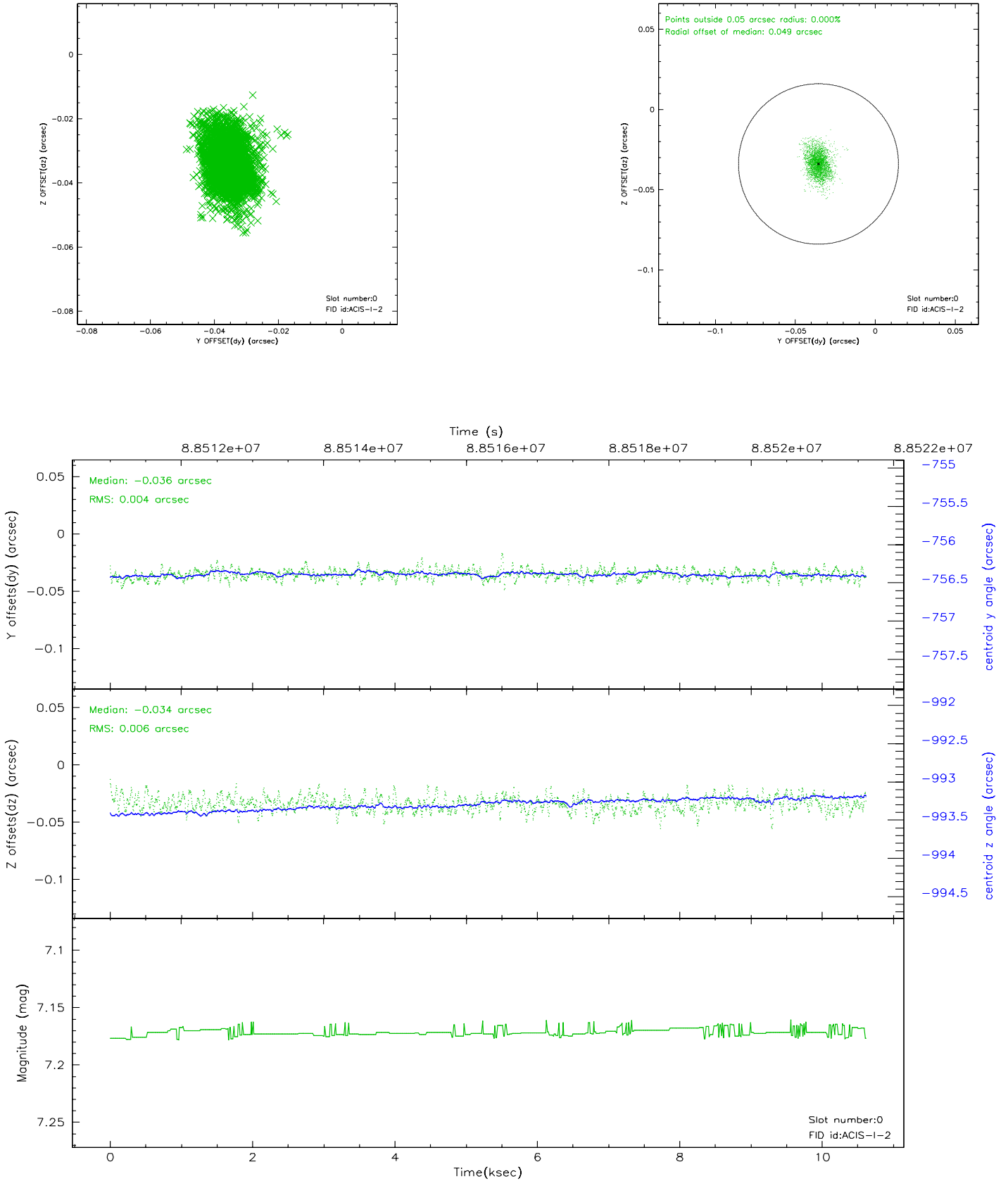


2.4.5 Slot 7

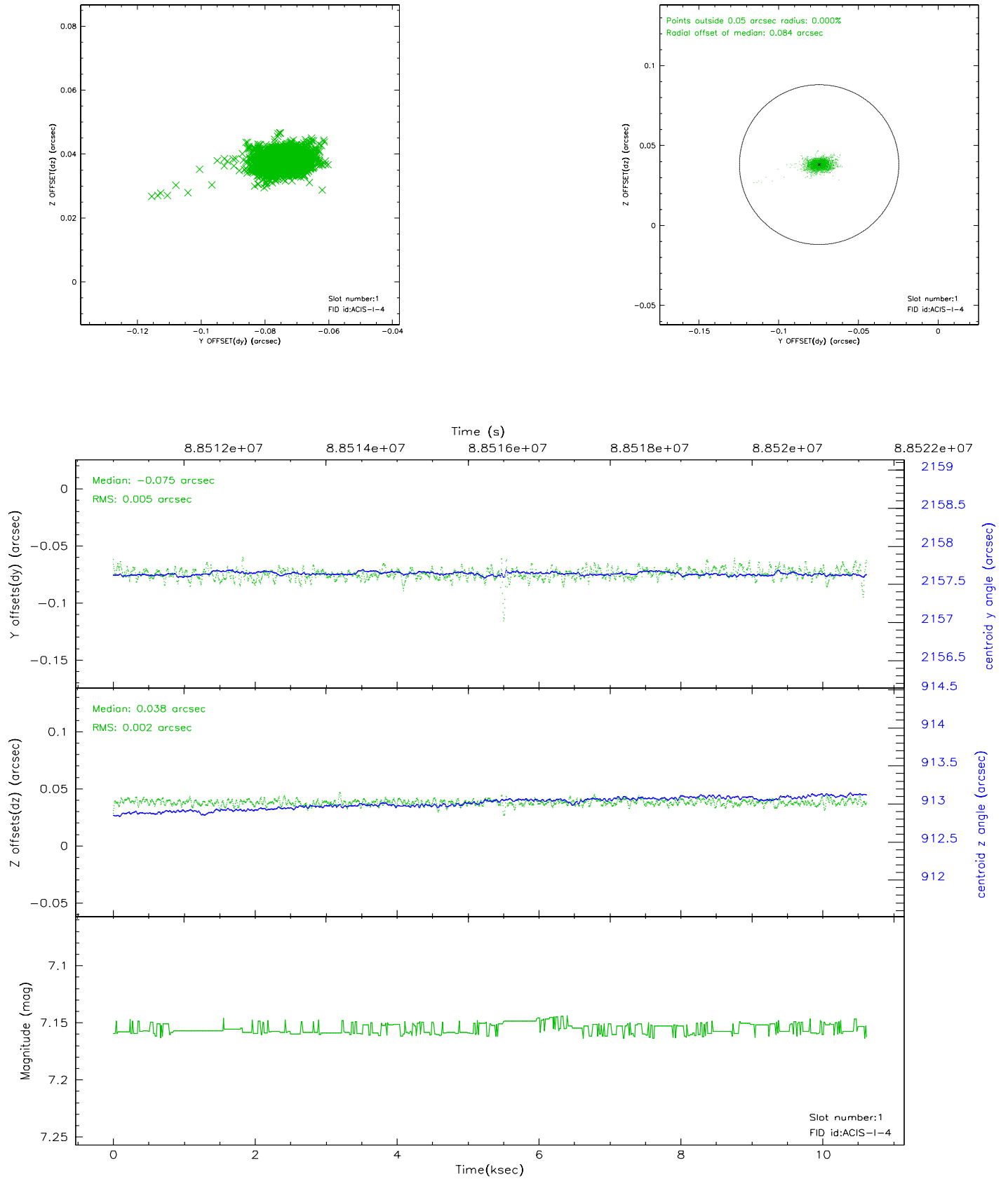


2.5 FID Slots

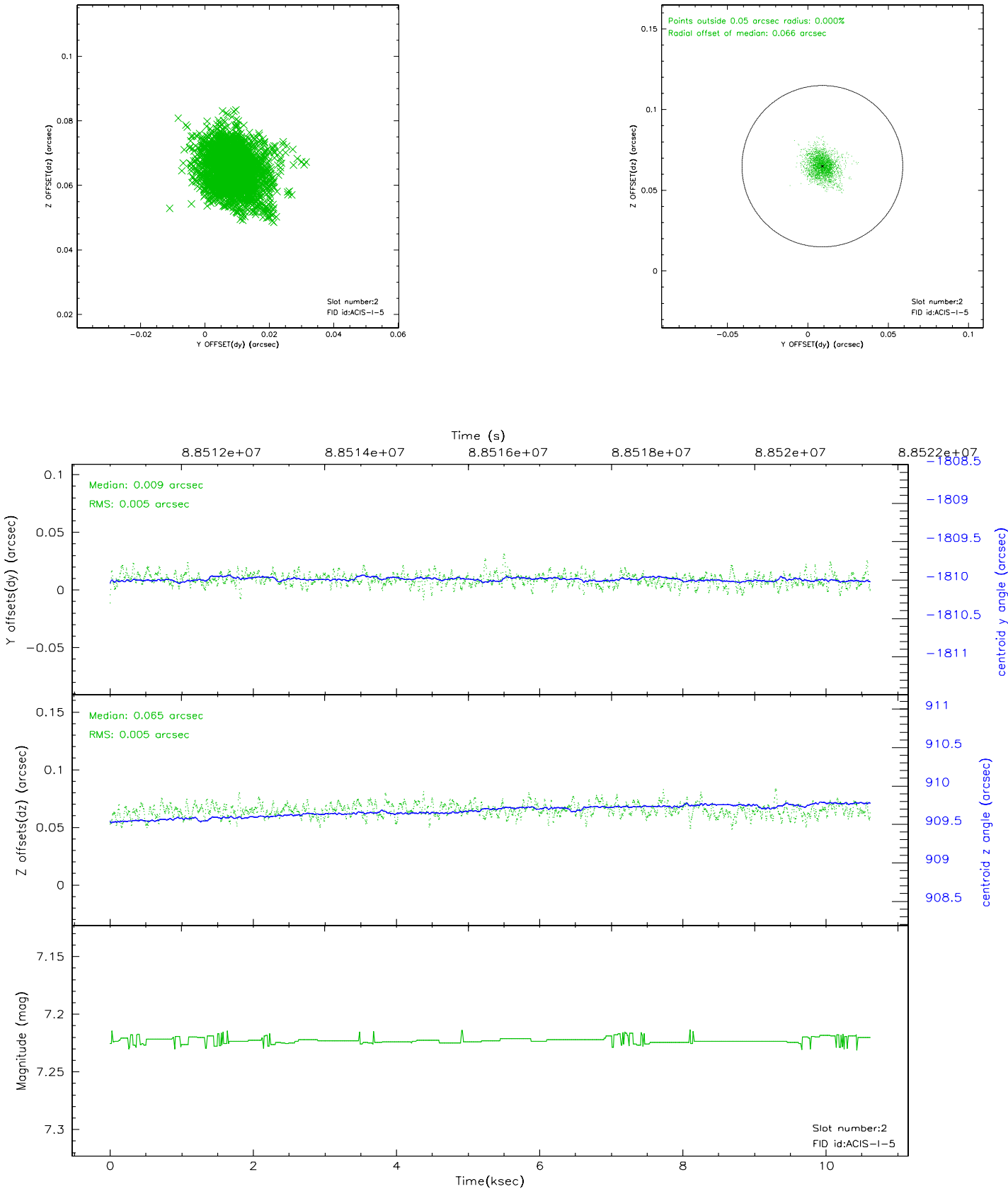
2.5.1 Slot 0



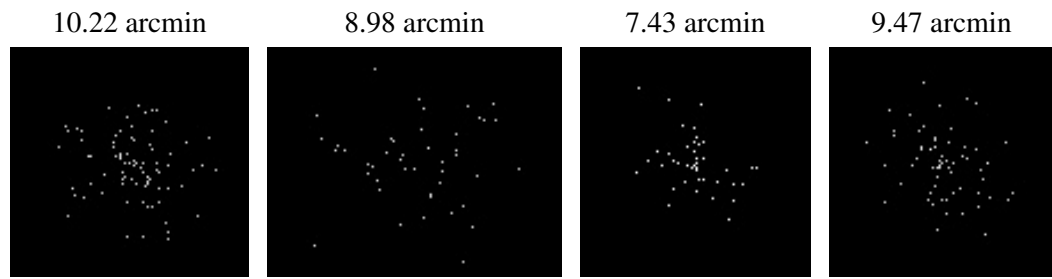
2.5.2 Slot 1



2.5.3 Slot 2



3 Point Sources



A Summary

A.1 Status

V&V Scientist	Jen Lauer
V&V Date (YYYY-MM-DD)	2007.06.12
V&V Edition	1
V&V Disposition and Status	OK
V&V Charge Time	10.092

A.2 Comments