

# V&V Reference Report

## L2 ASCDS Version : 7.6.10

Observation 538 - L2 Version 001  
Chandra X-Ray Center

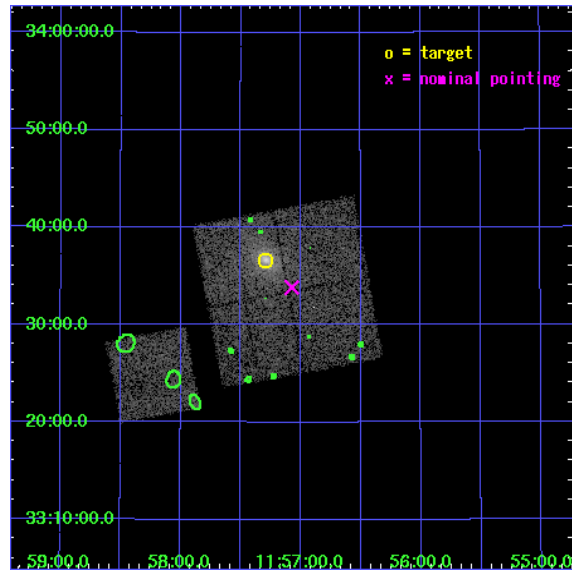
L2 Processing Date : May 30 2007

## Contents

<b>1</b>	<b>Front</b>	<b>2</b>
<b>2</b>	<b>OBI</b>	<b>3</b>
2.1	OBI . . . . .	3
2.1.1	Images . . . . .	3
2.1.2	Bias . . . . .	3
2.1.3	Parameters . . . . .	4
2.1.4	Events . . . . .	4
2.2	Compared Parameters . . . . .	5
2.3	Aspect . . . . .	6
2.4	Star Slots . . . . .	9
2.4.1	Slot 3 . . . . .	9
2.4.2	Slot 4 . . . . .	10
2.4.3	Slot 5 . . . . .	11
2.4.4	Slot 6 . . . . .	12
2.4.5	Slot 7 . . . . .	13
2.5	FID Slots . . . . .	14
2.5.1	Slot 0 . . . . .	14
2.5.2	Slot 1 . . . . .	15
2.5.3	Slot 2 . . . . .	16
<b>3</b>	<b>Point Sources</b>	<b>17</b>
<b>A</b>	<b>Summary</b>	<b>18</b>
A.1	Status . . . . .	18
A.2	Comments . . . . .	18

# 1 Front

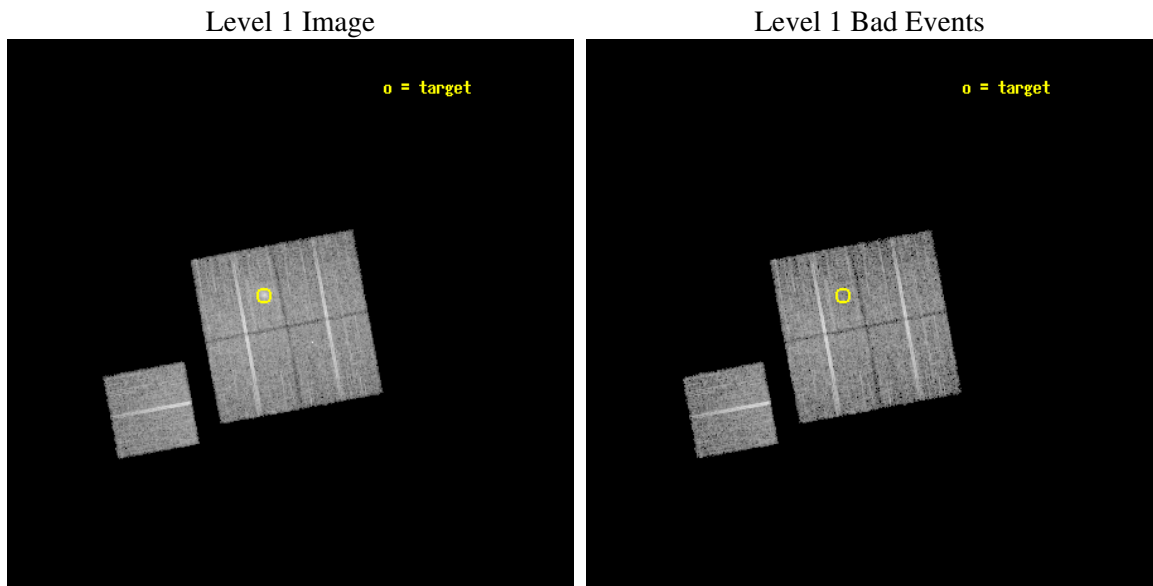
seq_num	800046
obs_id	538
title	DETERMINATION OF H0/Q0
observer	DR. LEON VANSPEYBROECK
object	A1423
dtcycle	0
cycle	P
ra_targ	179.322296
dec_targ	33.611003
ra_nom	179.2684364995
dec_nom	33.564033356689
roll_nom	259.41486509121
revision	3
ontime	9999.9590490758
livetime	9873.333546344
ontime0	10003.200009316
ontime1	9999.9590191394
ontime2	10003.200009316
ontime3	9999.9590490758
ontime6	10003.200009316
l2events	37757



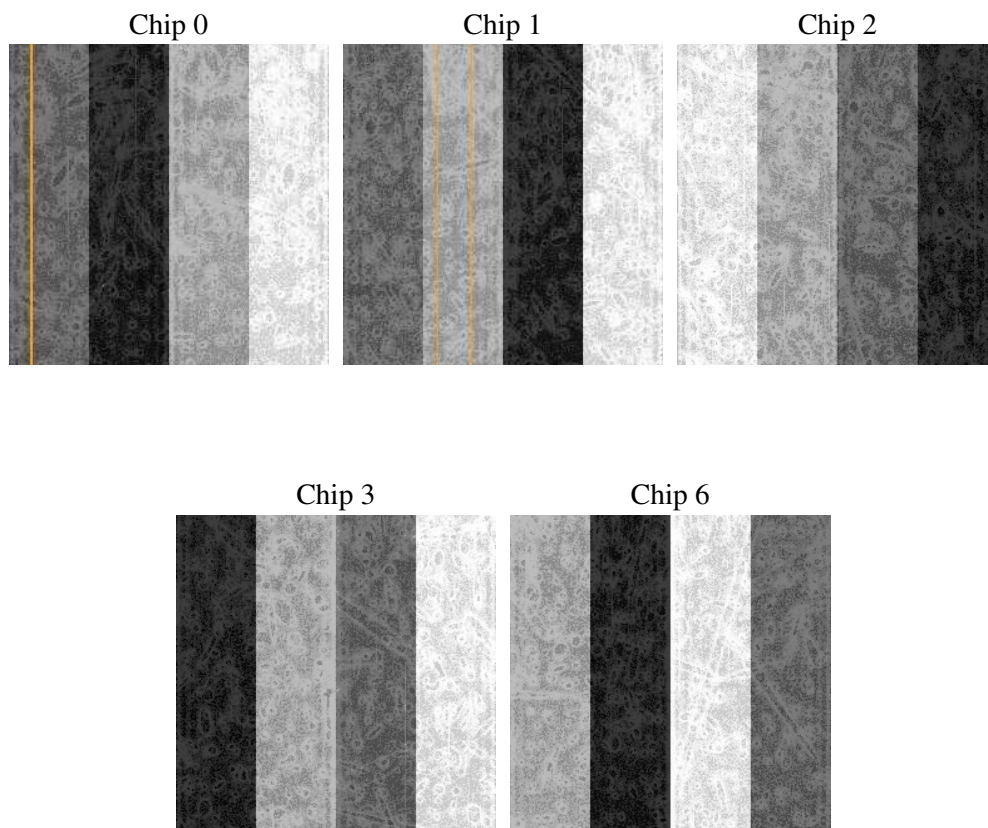
## 2 OBI

### 2.1 OBI

#### 2.1.1 Images



#### 2.1.2 Bias



### 2.1.3 Parameters

obi_num	0
ascdsver	7.6.10
caldsver	3.4.0
date	2007-05-30T13:16:34
revision	3

sched_exp_time	9895.000000
ontime	9999.9590490758
ontime0	10003.200009316
ontime1	9999.9590191394
ontime2	10003.200009316
ontime3	9999.9590490758
ontime6	10003.200009316
l1events	347122

### 2.1.4 Events

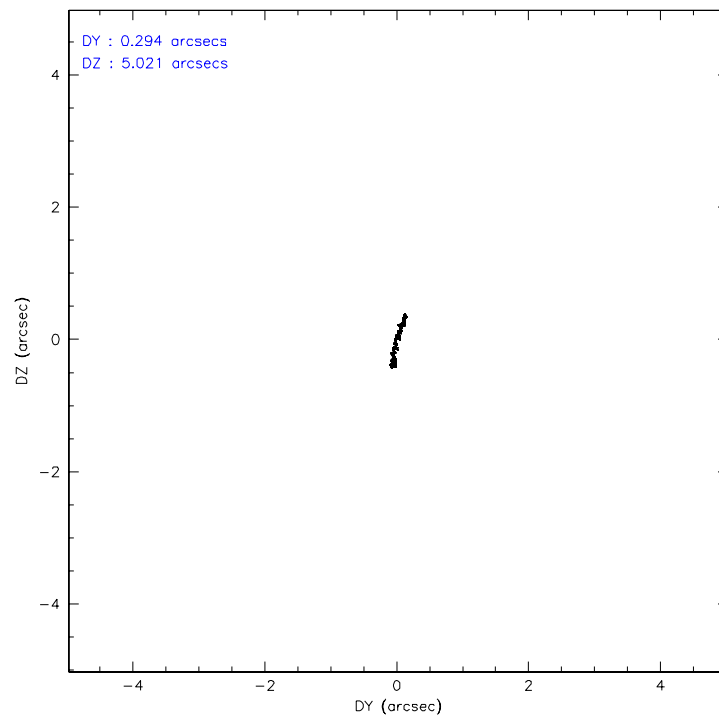
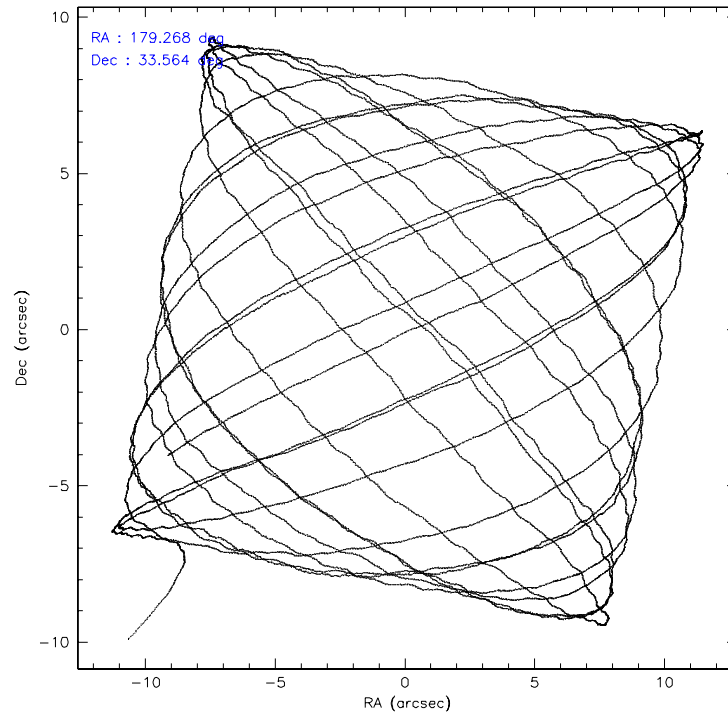
	ccd 0	ccd 1	ccd 2	ccd 3	ccd 6
level 1 events	66308	63794	72055	77367	67598
rejected events	58657	55668	64740	64312	60502
rejected %	88%	87%	89%	83%	89%

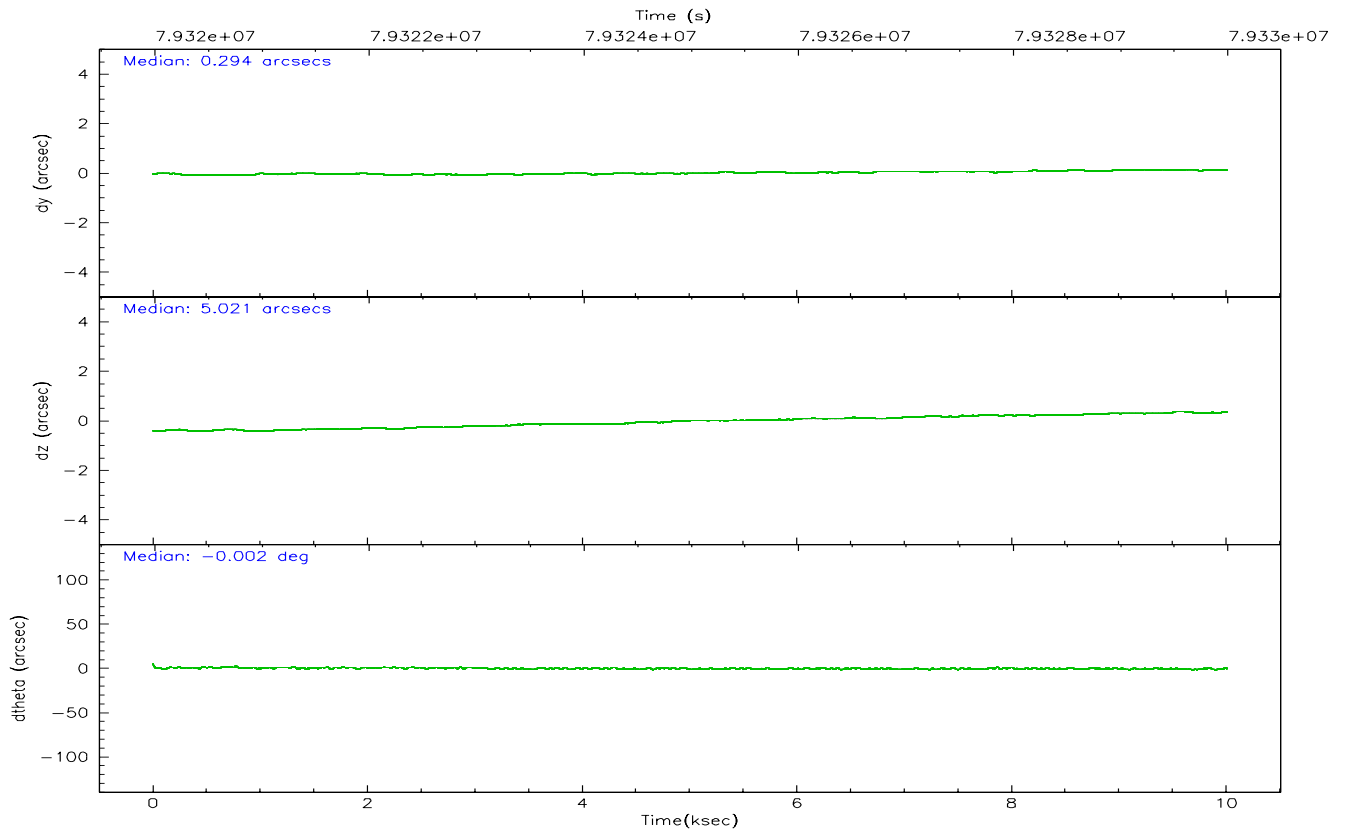
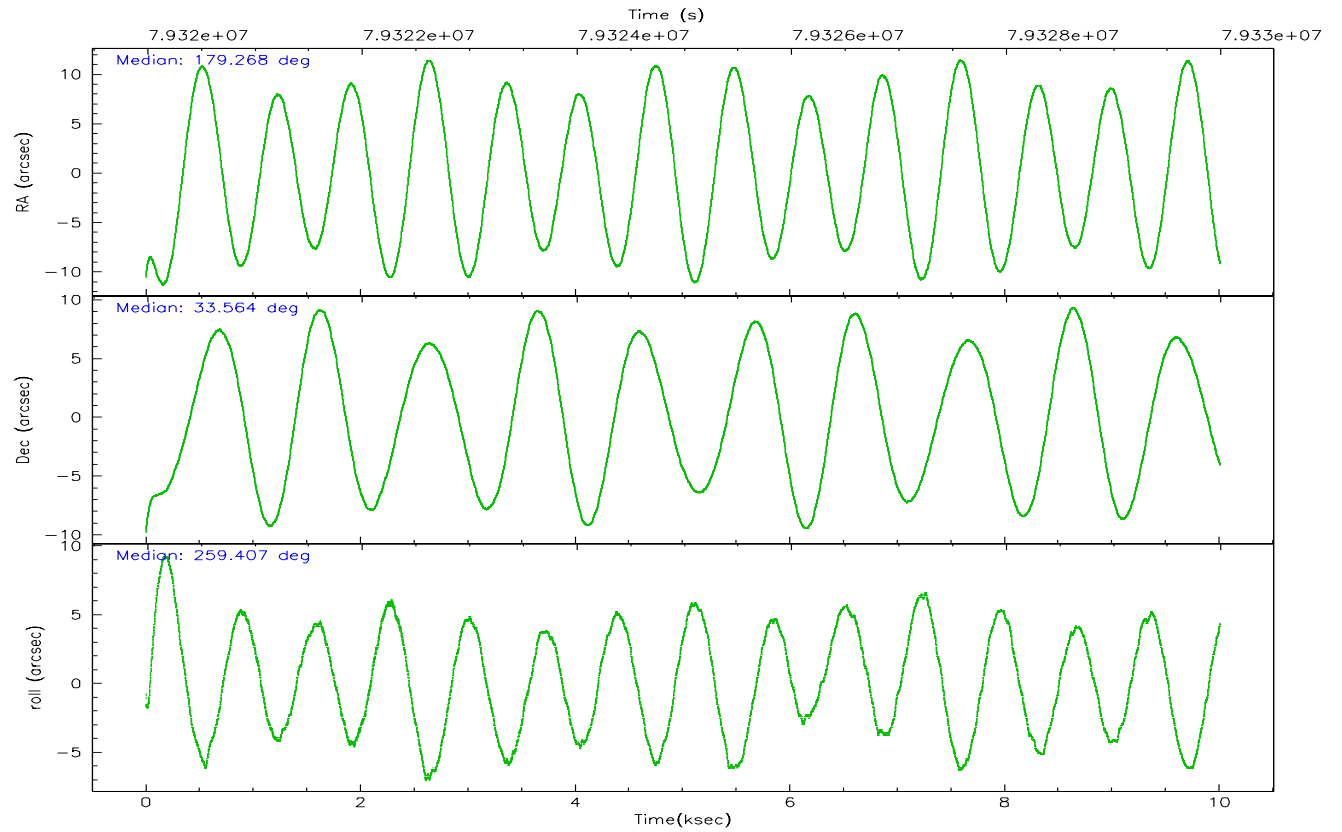
	ccd 0	ccd 1	ccd 2	ccd 3	ccd 6
grade 0 events	3531	3772	3414	8364	3038
	5%	5%	4%	10%	4%
grade 1 events	39	34	27	60	31
	0%	0%	0%	0%	0%
grade 2 events	1615	1573	1551	1891	1412
	2%	2%	2%	2%	2%
grade 3 events	736	851	737	919	821
	1%	1%	1%	1%	1%
grade 4 events	749	843	705	874	693
	1%	1%	0%	1%	1%
grade 5 events	2221	2439	2116	2471	2496
	3%	3%	2%	3%	3%
grade 6 events	1359	1407	1202	1402	1421
	2%	2%	1%	1%	2%
grade 7 events	56058	52875	62303	61386	57686
	84%	82%	86%	79%	85%

## 2.2 Compared Parameters

Parameter	Planned	Actual	Parameter	Planned	Actual
Instrument	ACIS	ACIS	Obspar format version number	6	6
Detector	ACIS-01236	ACIS-01236	Obspar file type	PREDICTED	ACTUAL
Grating	NONE	NONE	Obspar update status	NONE	UPDATED
Data mode	VFAINT	VFAINT	Number of optional ACIS chips dropped	0	0
Observation mode	POINTING	POINTING	On-chip summing requested	N	N
Pointing RA	179.257602	179.2684364994975	Subarray requested	NONE	NONE
Pointing Dec	33.590065	33.5640333566895	Alternating exposures requested	N	N
Pointing Roll	259.212179	259.4148650912082	Primary exposure time	3.200000	3.2
SIM focus pos (mm)	-0.782348	-0.7809083437167272			
SIM defocus (mm)	0	0.001439871863259334			
SIM translation stage pos (mm)	-236.532463	-236.5241547330508			
SIM translation stage offset (mm)	2.94	2.931701730121091			
Observation start time	79320100.184000	79318932.746494			
Observation start date	2000-07-07T01:20:36	2000-07-07T01:02:12			
Observation end time	79329995.184000	79330271.809412			
Observation end date	2000-07-07T04:05:31	2000-07-07T04:11:11			
Read mode	TIMED	TIMED			

## 2.3 Aspect





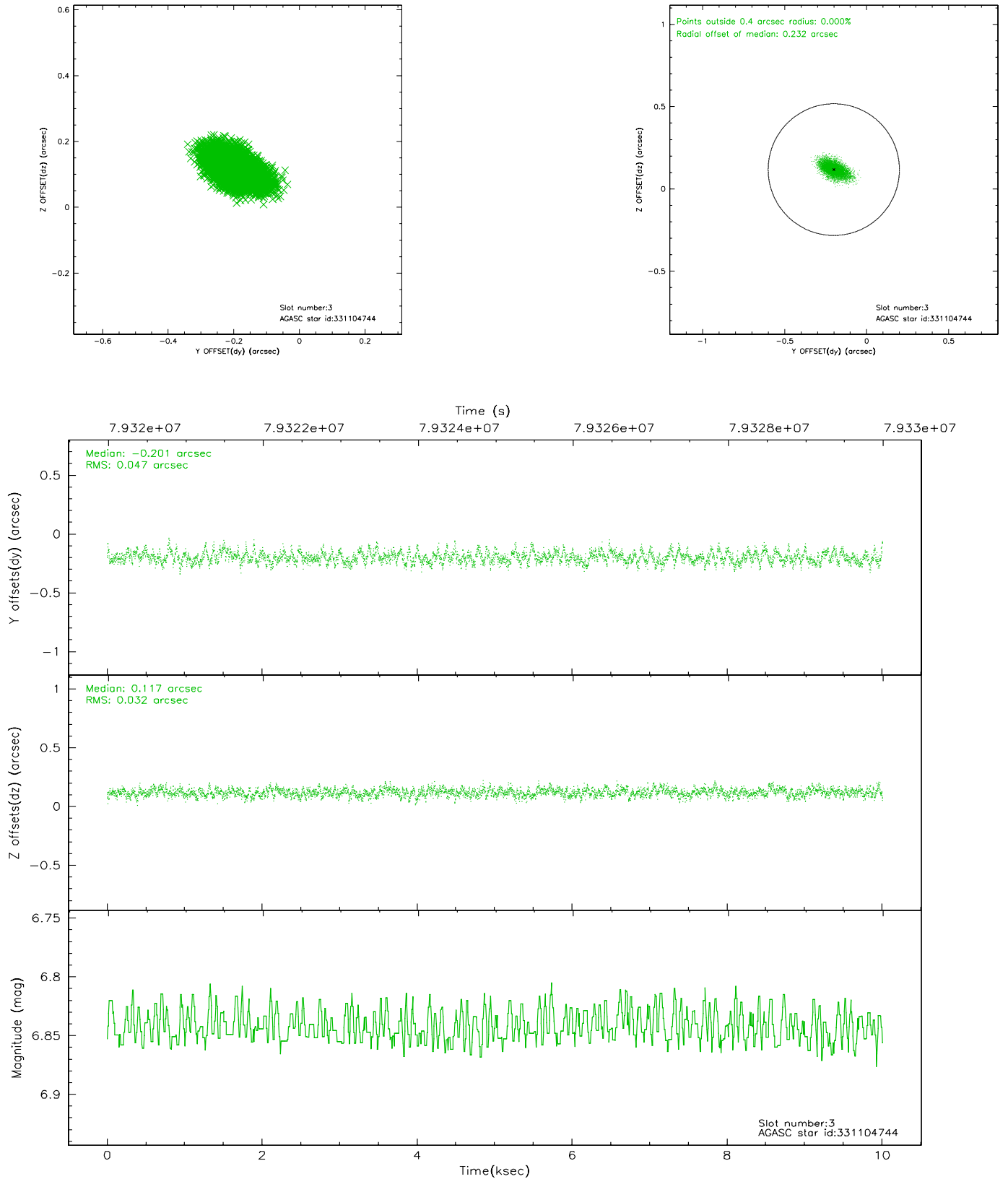
### Slot Statistics

slot	status	id	mag	n_pts	med_dy	med_dz	dr1	dr2	ra	dec	mean_y	mean_z
0	FID	ACIS-I-2	7.15	2440	-0.009	0.006	0.010	0.015	0.000000	0.000000	-754.42	-774.74
1	FID	ACIS-I-4	7.22	2440	-0.034	0.014	0.011	0.018	0.000000	0.000000	2159.41	1131.19
2	FID	ACIS-I-5	7.23	2441	-0.058	0.048	0.010	0.015	0.000000	0.000000	-1807.75	1130.09
3	GUIDE	331104744	6.84	4883	-0.201	0.117	0.059	0.101	179.989068	34.034752	-1989.94	1843.85
4	GUIDE	330830376	7.28	4880	-0.028	-0.084	0.075	0.127	178.448287	33.615276	354.80	-2400.38
5	GUIDE	330833592	8.59	4883	0.090	-0.110	0.061	0.099	179.287446	33.353459	819.27	248.53
6	GUIDE	331106016	8.90	4883	-0.088	0.076	0.082	0.135	179.949729	33.960595	-1704.95	1780.51
7	GUIDE	330827040	9.19	4883	0.226	0.002	0.074	0.121	179.047385	33.198375	1502.21	-356.25

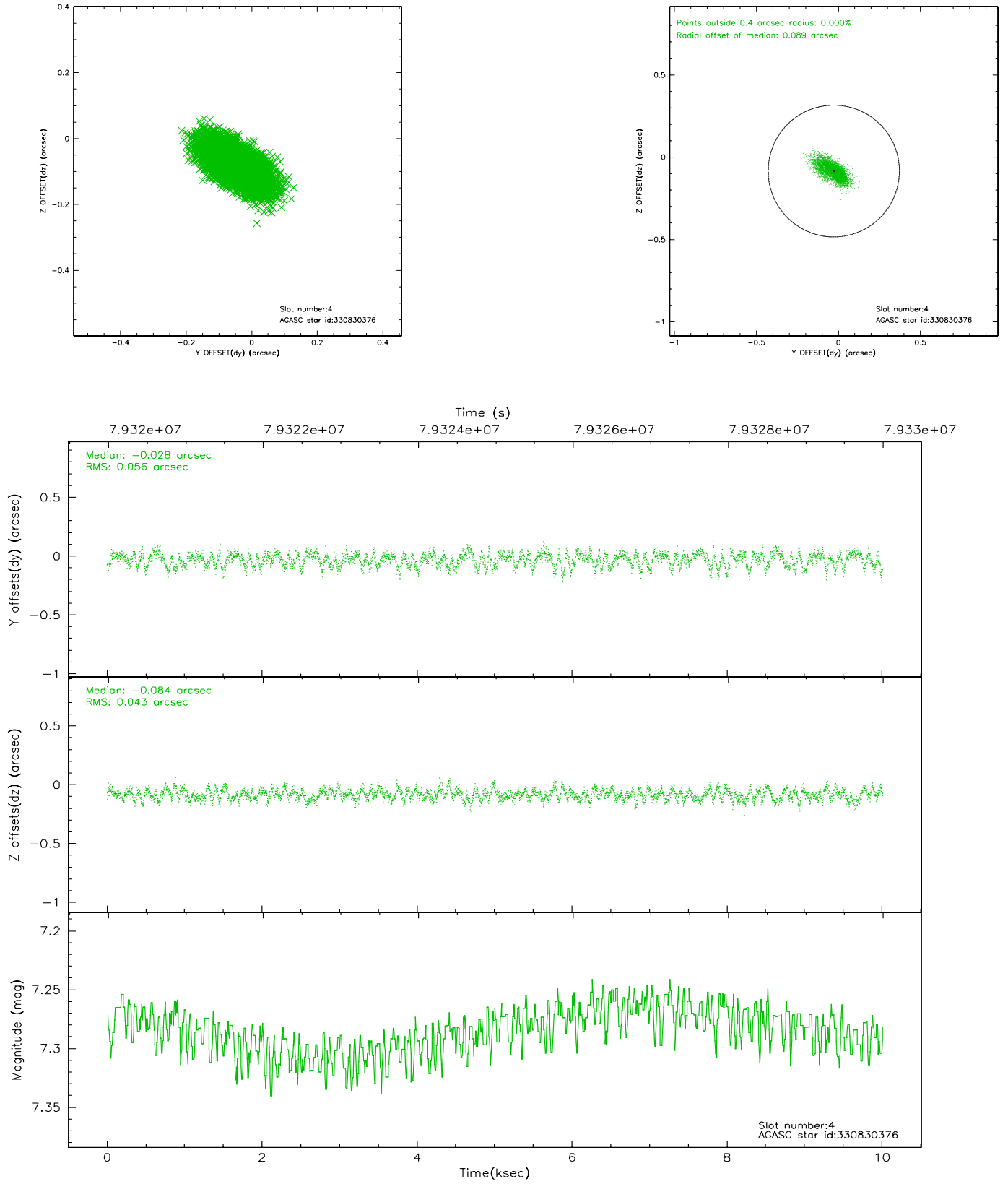


## 2.4 Star Slots

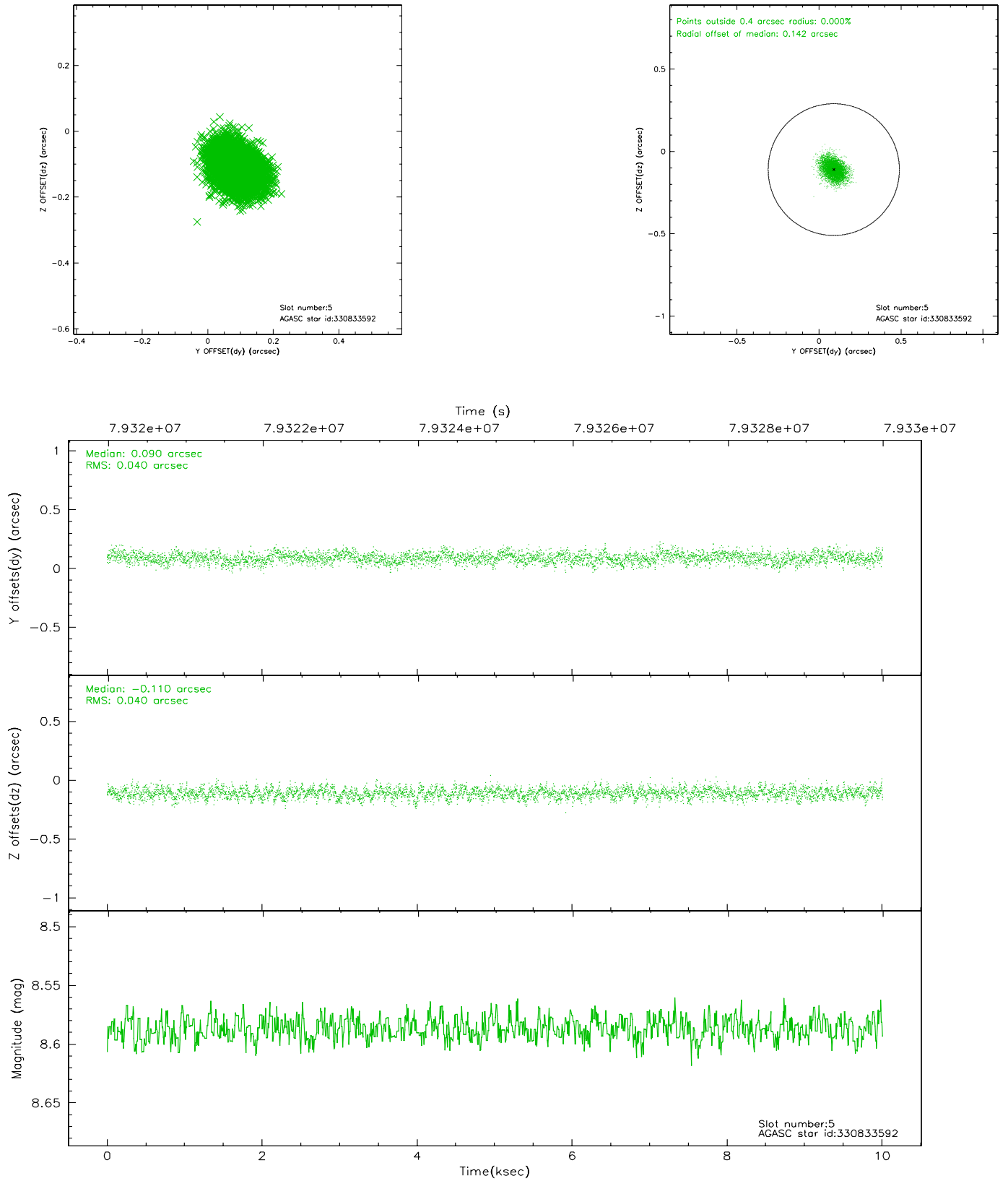
### 2.4.1 Slot 3



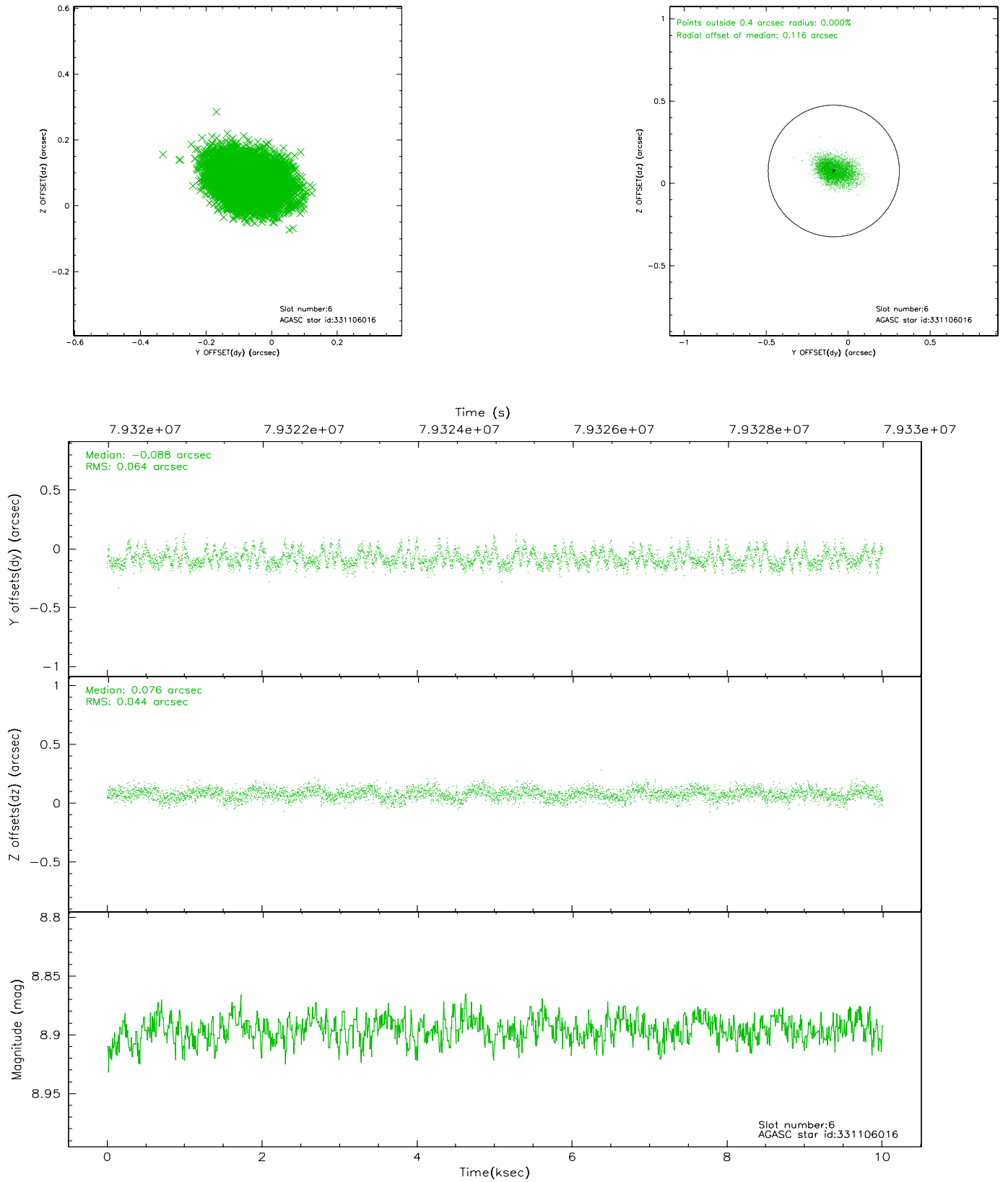
## 2.4.2 Slot 4



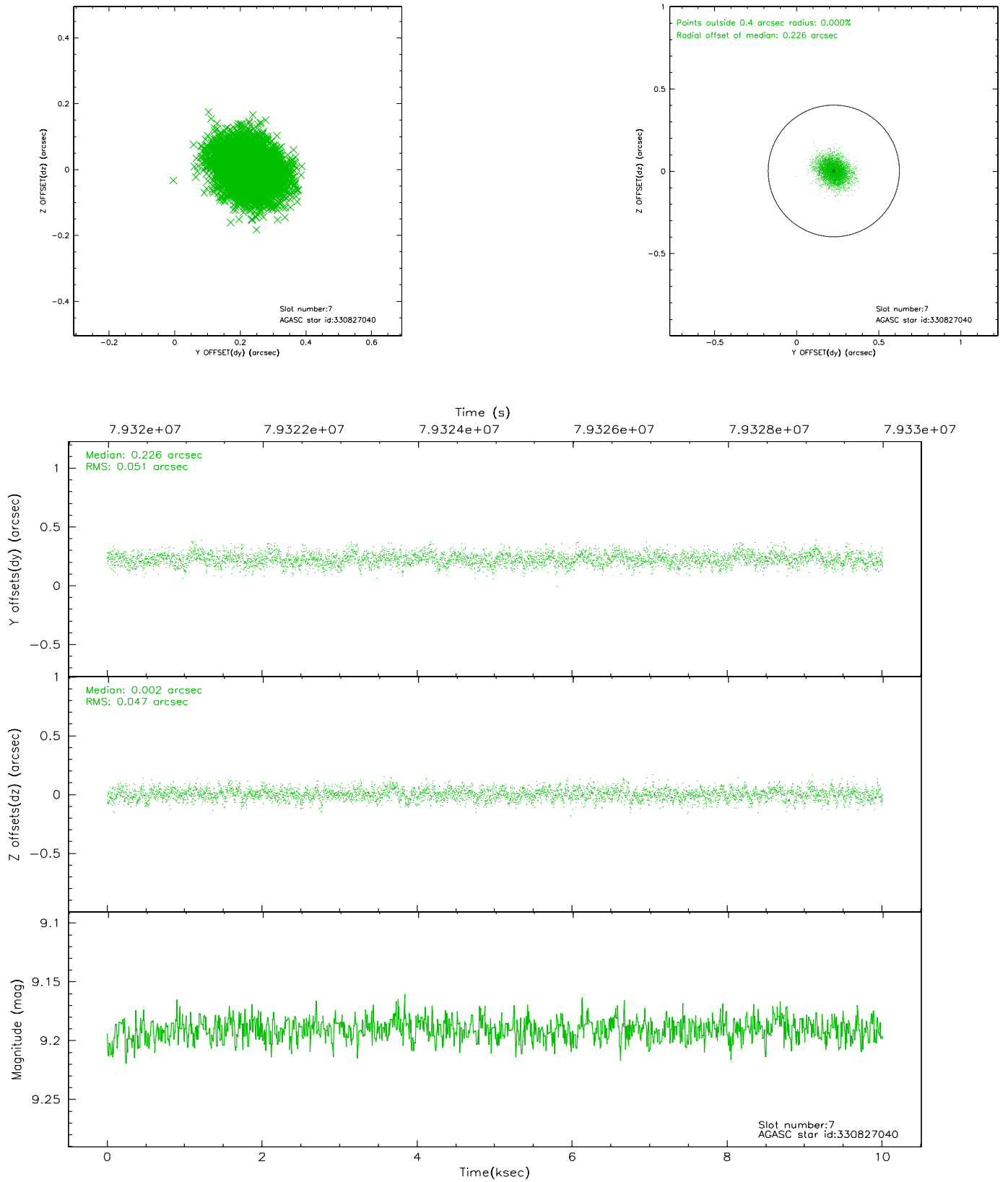
### 2.4.3 Slot 5



## 2.4.4 Slot 6

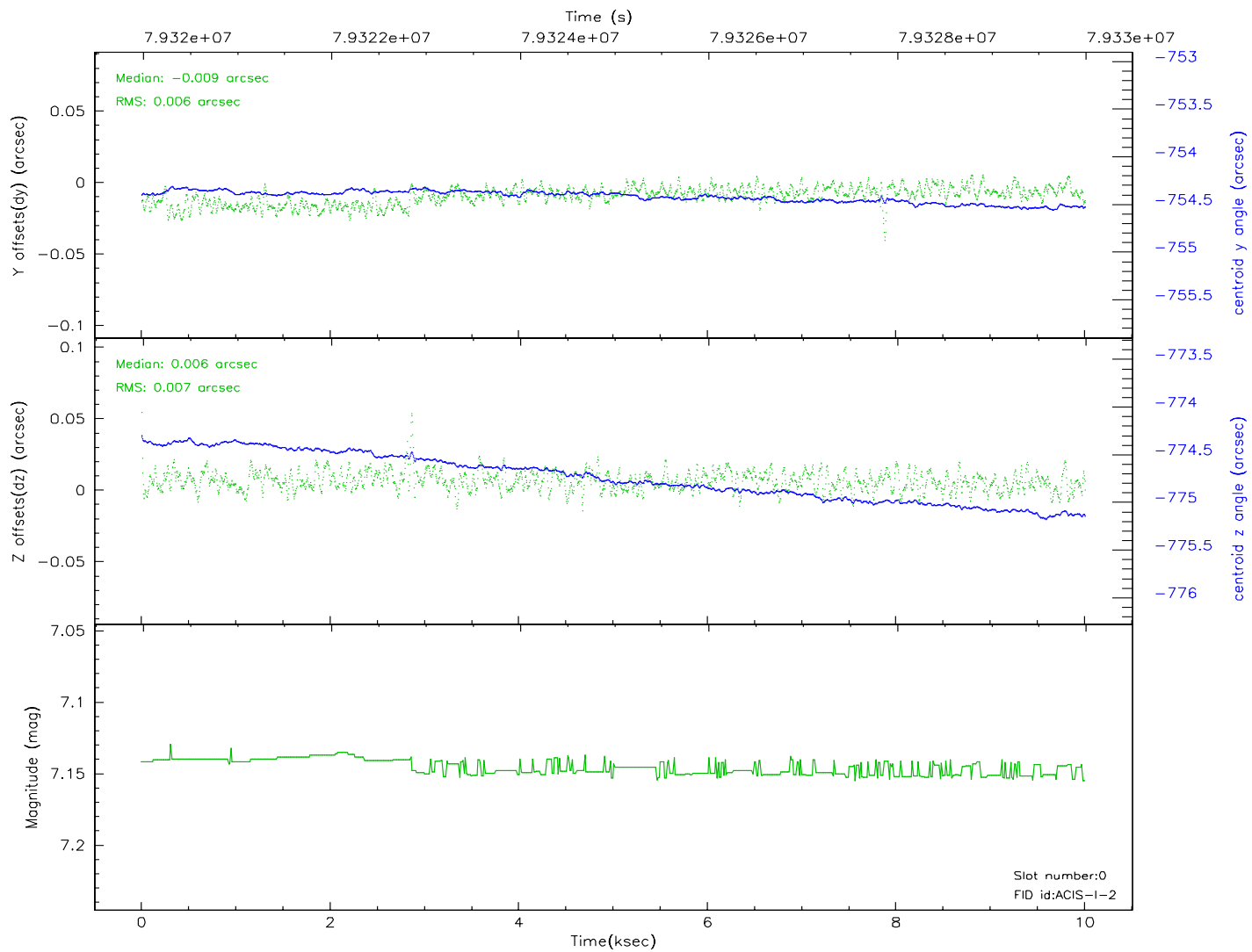
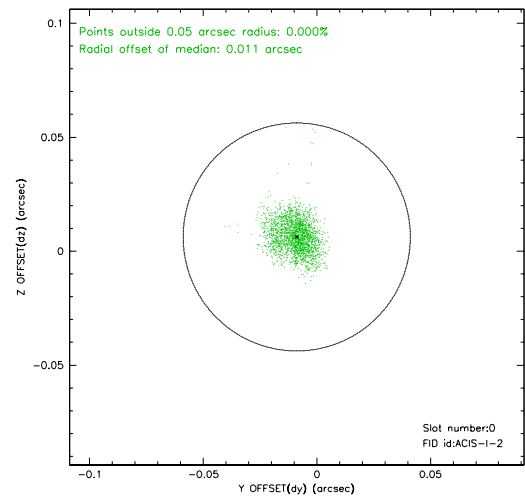
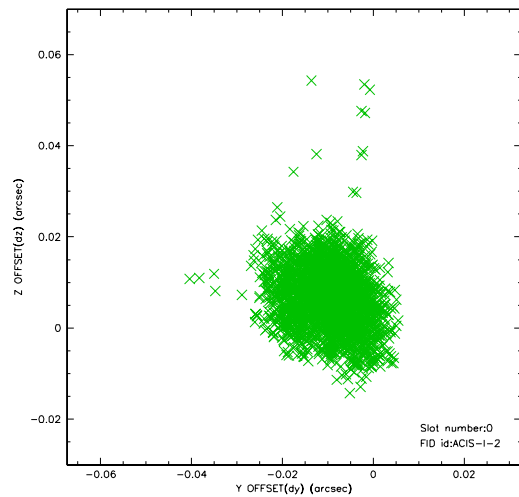


## 2.4.5 Slot 7

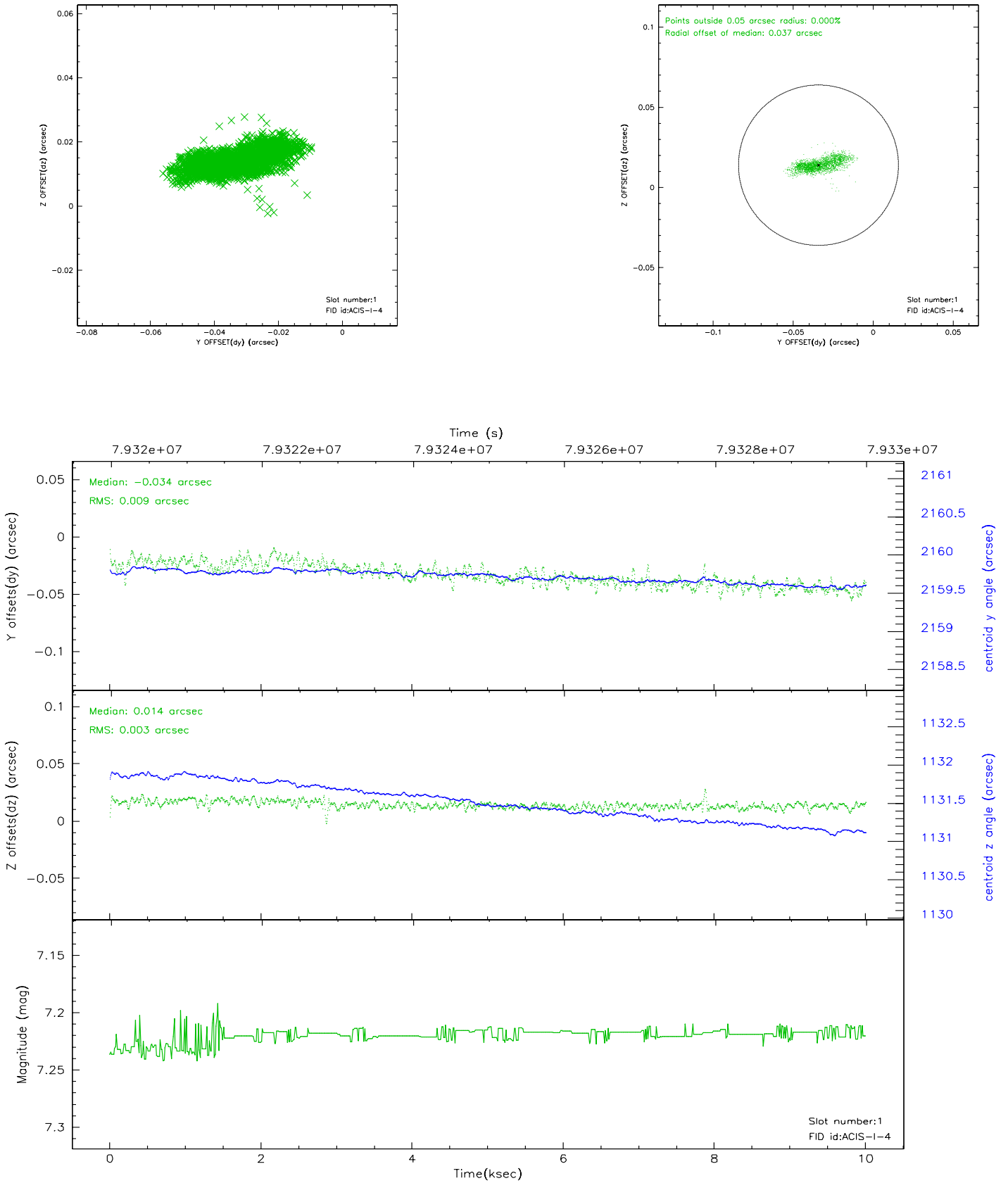


## 2.5 FID Slots

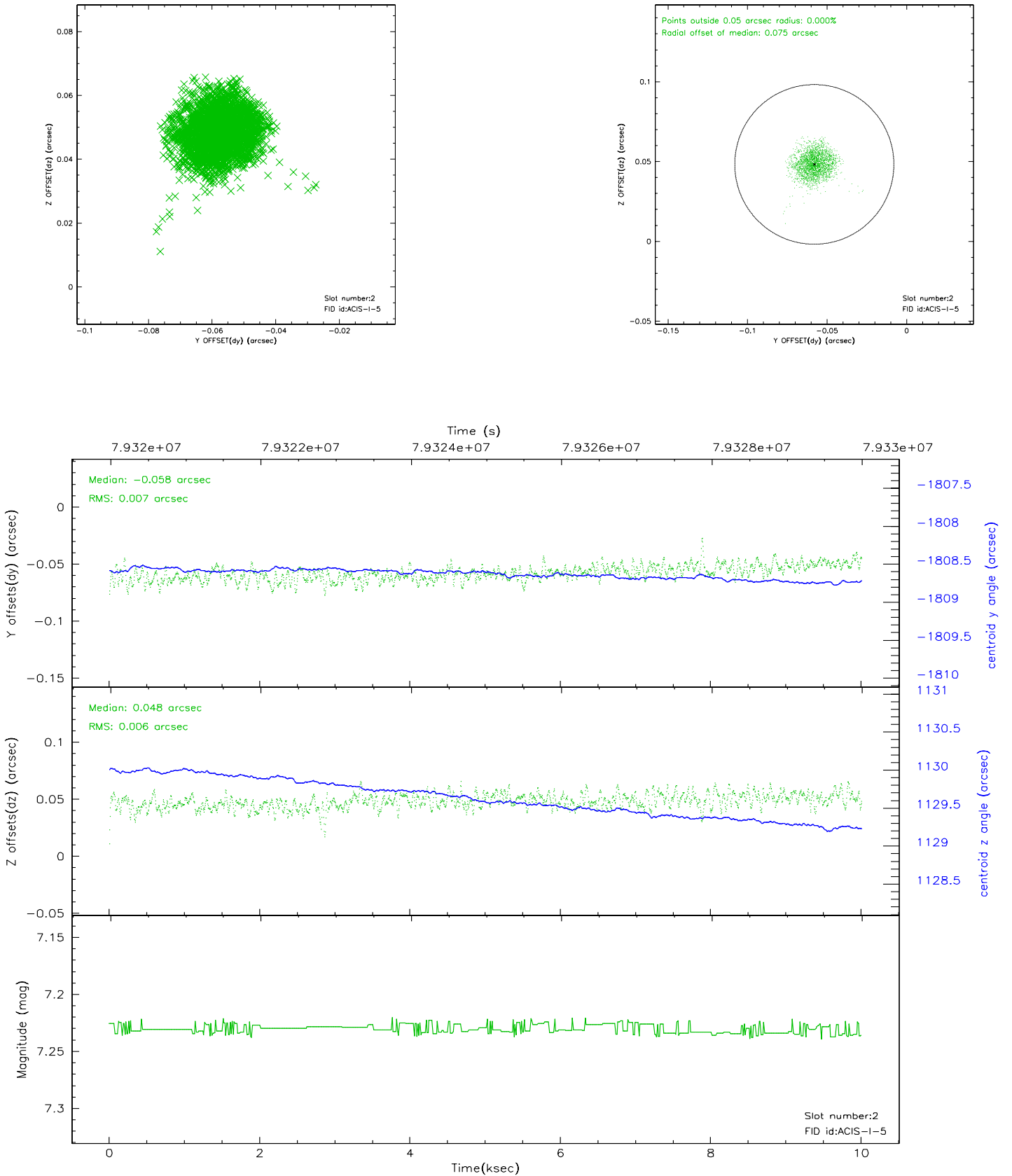
### 2.5.1 Slot 0



## 2.5.2 Slot 1

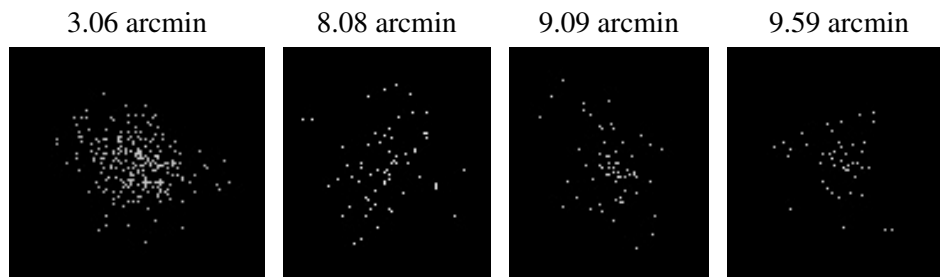


### 2.5.3 Slot 2





### 3 Point Sources



## A Summary

### A.1 Status

V&V Scientist	Jen Lauer
V&V Date (YYYY-MM-DD)	2007.05.30
V&V Edition	1
V&V Disposition and Status	OK
V&V Charge Time	9.904

### A.2 Comments