

# V&V Reference Report

## L2 ASCDS Version : 7.6.10

Observation 500 - L2 Version 001  
Chandra X-Ray Center

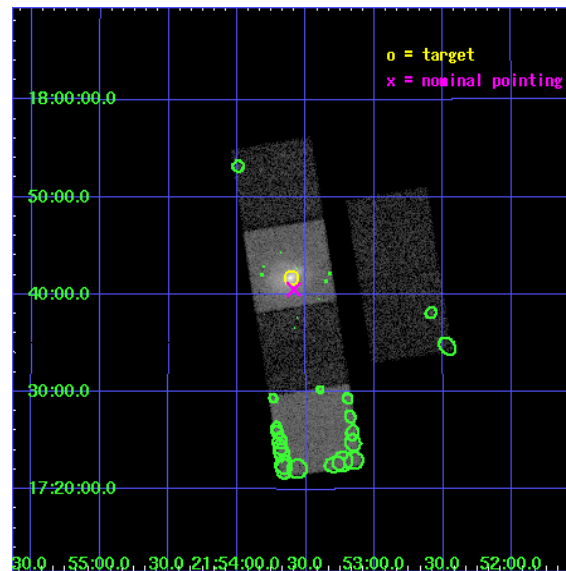
L2 Processing Date : Jun 9 2007

## Contents

<b>1</b>	<b>Front</b>	<b>2</b>
<b>2</b>	<b>OBI</b>	<b>3</b>
2.1	OBI . . . . .	3
2.1.1	Images . . . . .	3
2.1.2	Bias . . . . .	3
2.1.3	Parameters . . . . .	4
2.1.4	Events . . . . .	4
2.2	Compared Parameters . . . . .	5
2.3	Aspect . . . . .	6
2.4	Star Slots . . . . .	9
2.4.1	Slot 3 . . . . .	9
2.4.2	Slot 4 . . . . .	10
2.4.3	Slot 5 . . . . .	11
2.4.4	Slot 6 . . . . .	12
2.4.5	Slot 7 . . . . .	13
2.5	FID Slots . . . . .	14
2.5.1	Slot 0 . . . . .	14
2.5.2	Slot 1 . . . . .	15
2.5.3	Slot 2 . . . . .	16
<b>3</b>	<b>Point Sources</b>	<b>17</b>
<b>A</b>	<b>Summary</b>	<b>18</b>
A.1	Status . . . . .	18
A.2	Comments . . . . .	18

# 1 Front

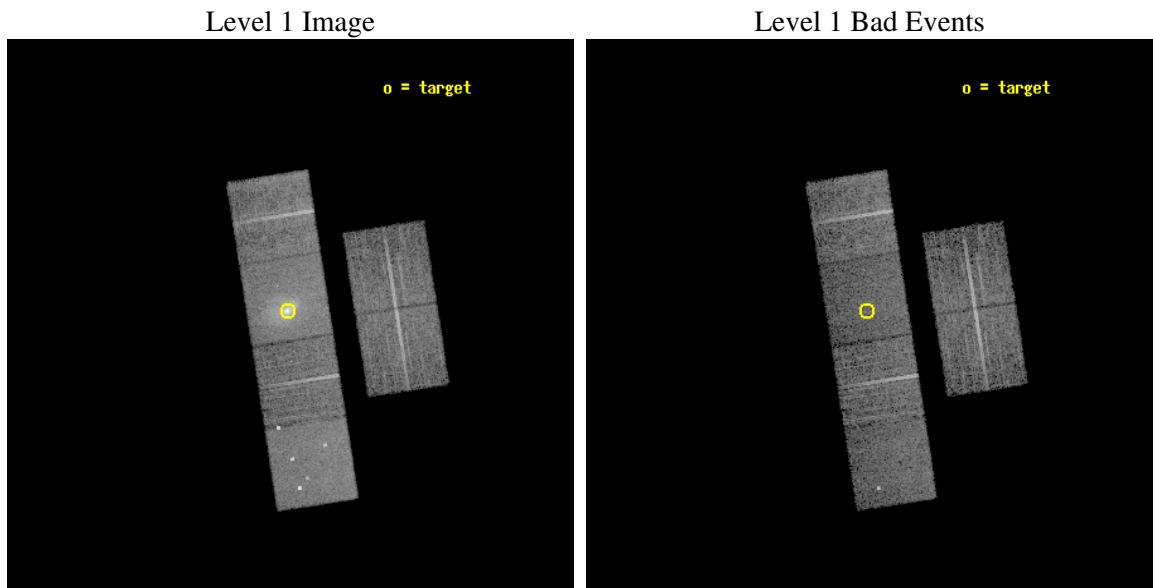
seq_num	800008
obs_id	500
title	THE MASSIVE COOLING FLOW IN A2390
observer	Professor Andrew Fabian
object	A2390
dtcycle	0
cycle	P
ra_targ	328.402083
dec_targ	17.695833
ra_nom	328.39684280643
dec_nom	17.675475612753
roll_nom	261.05486617351
revision	2
ontime	9952.0000092685
livetime	9825.9817927762
ontime2	9952.0000092685
ontime3	9952.0000092685
ontime5	9952.0000092685
ontime6	9952.0000092685
ontime7	9952.0000092685
ontime8	9952.0000092685
l2events	116789



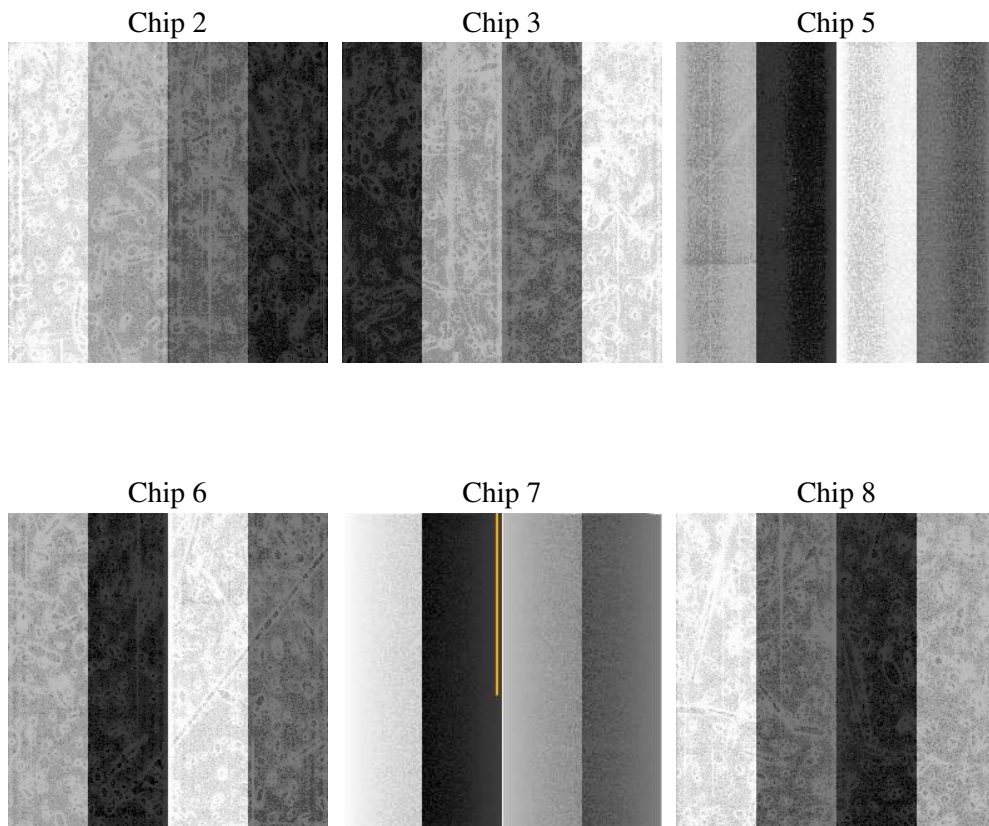
## 2 OBI

### 2.1 OBI

#### 2.1.1 Images



#### 2.1.2 Bias



### 2.1.3 Parameters

obi_num	0
ascdsver	7.6.10
caldbver	3.4.0
date	2007-06-09T20:01:19
revision	2

sched_exp_time	10000.000000
ontime	9952.0000092685
ontime2	9952.0000092685
ontime3	9952.0000092685
ontime5	9952.0000092685
ontime6	9952.0000092685
ontime7	9952.0000092685
ontime8	9952.0000092685
l1events	440729

### 2.1.4 Events

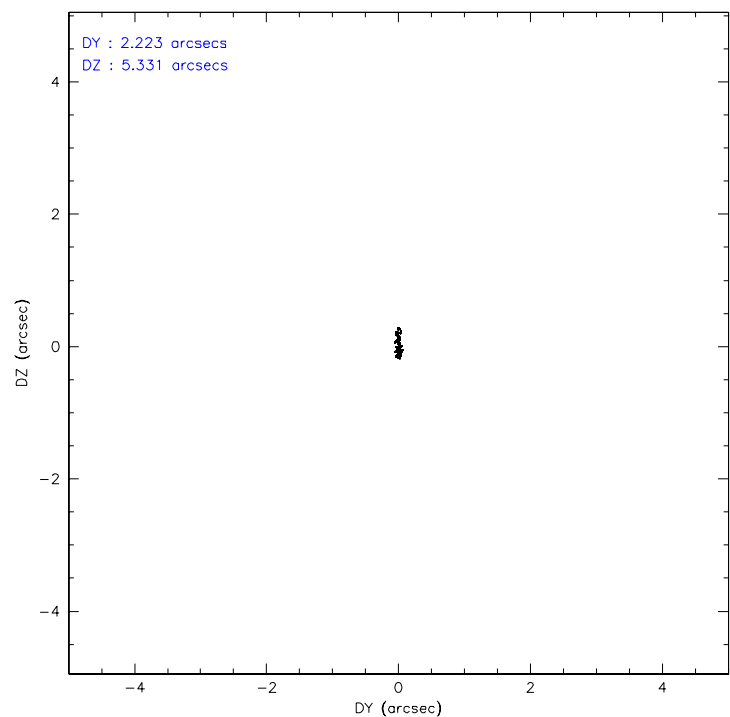
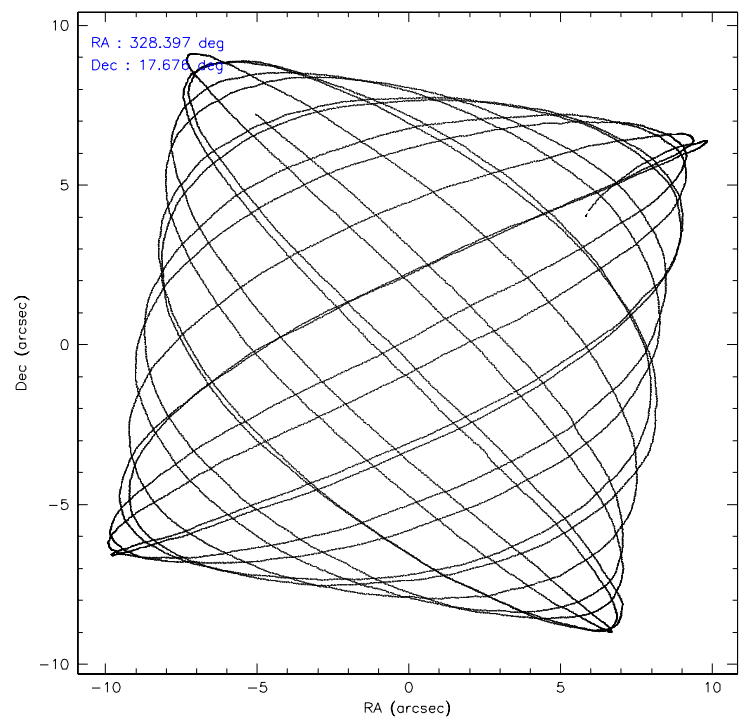
	ccd 2	ccd 3	ccd 5	ccd 6	ccd 7	ccd 8
level 1 events	61225	57560	85038	61030	101258	74618
rejected events	54650	50999	44353	53460	42694	60380
rejected %	89%	88%	52%	87%	42%	80%

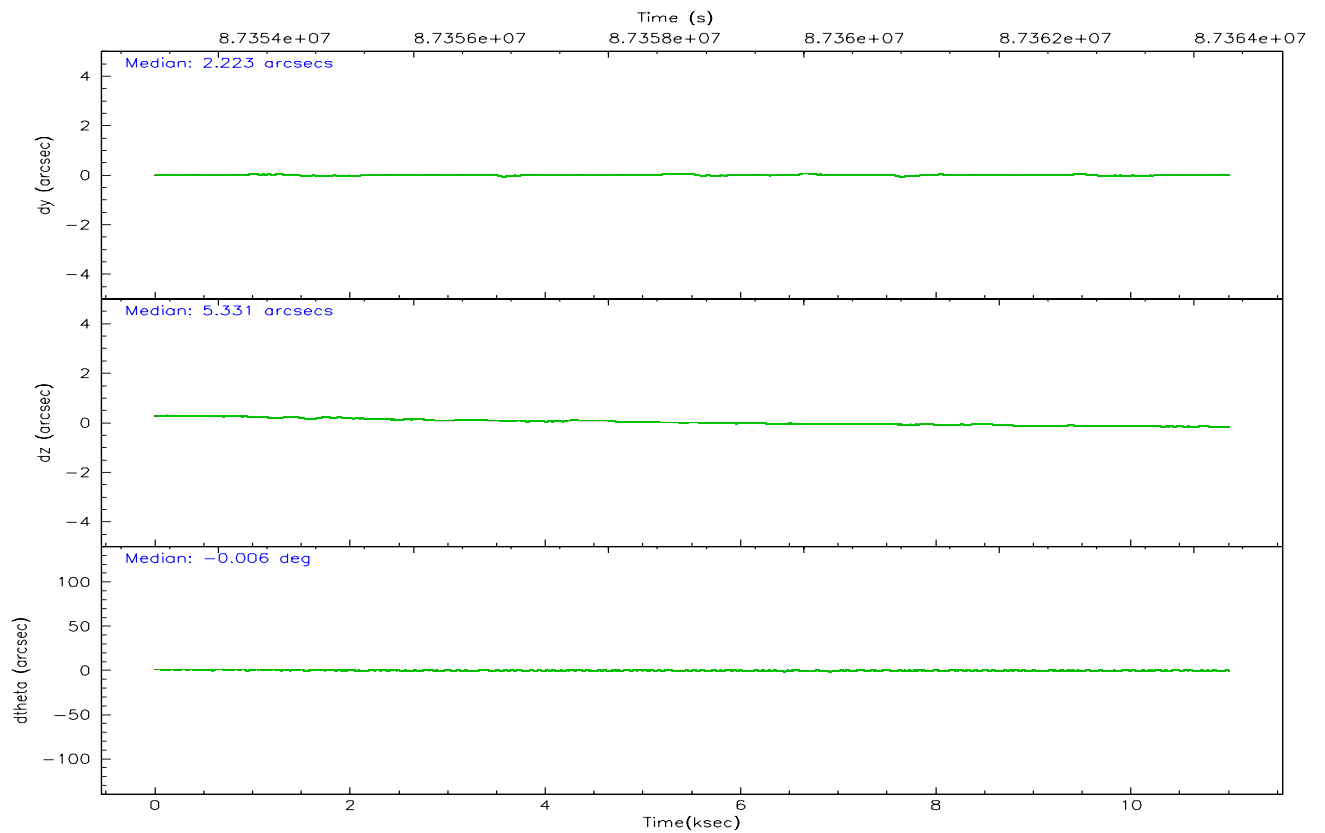
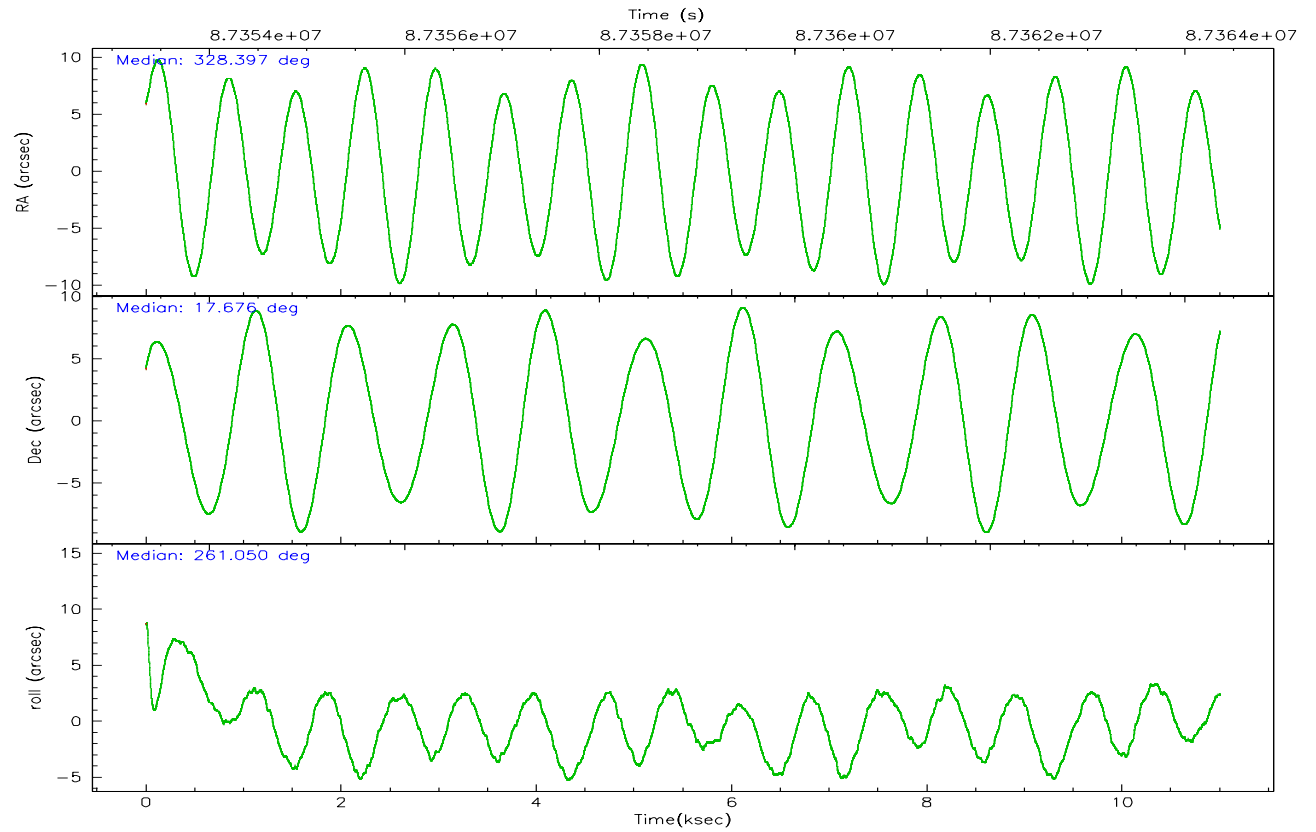
	ccd 2	ccd 3	ccd 5	ccd 6	ccd 7	ccd 8
grade 0 events	2782	2841	6426	3414	11318	4510
	4%	4%	7%	5%	11%	6%
grade 1 events	32	23	104	25	82	36
	0%	0%	0%	0%	0%	0%
grade 2 events	1364	1218	11458	1442	13216	3083
	2%	2%	13%	2%	13%	4%
grade 3 events	646	661	1894	678	6118	1546
	1%	1%	2%	1%	6%	2%
grade 4 events	654	674	1692	741	6137	1419
	1%	1%	1%	1%	6%	1%
grade 5 events	2060	2195	6313	2351	7264	3016
	3%	3%	7%	3%	7%	4%
grade 6 events	1132	1167	19249	1301	21812	3687
	1%	2%	22%	2%	21%	4%
grade 7 events	52555	48781	37902	51078	35311	57321
	85%	84%	44%	83%	34%	76%

## 2.2 Compared Parameters

Parameter	Planned	Actual	Parameter	Planned	Actual
Instrument	ACIS	ACIS	Obspar format version number	6	6
Detector	ACIS-235678	ACIS-235678	Obspar file type	PREDICTED	ACTUAL
Grating	NONE	NONE	Obspar update status	NONE	UPDATED
Data mode	FAINT	FAINT	Number of optional ACIS chips dropped	0	0
Observation mode	POINTING	POINTING	On-chip summing requested	N	N
Pointing RA	328.386286	328.3968428064322	Subarray requested	NONE	NONE
Pointing Dec	17.700939	17.67547561275279	Alternating exposures requested	N	N
Pointing Roll	260.901441	261.0548661735069	Primary exposure time	3.200000	3.2
SIM focus pos (mm)	-0.684267	-0.6828225247311905			
SIM defocus (mm)	0	0.001444936568705701			
SIM translation stage pos (mm)	-190.132523	-190.1425803651734			
SIM translation stage offset (mm)	0	0.01005778216563158			
Observation start time	87354359.184000	87352994.772			
Observation start date	2000-10-08T01:04:55	2000-10-08T00:43:14			
Observation end time	87364359.184000	87365202.522461			
Observation end date	2000-10-08T03:51:35	2000-10-08T04:06:42			
Read mode	TIMED	TIMED			

## 2.3 Aspect





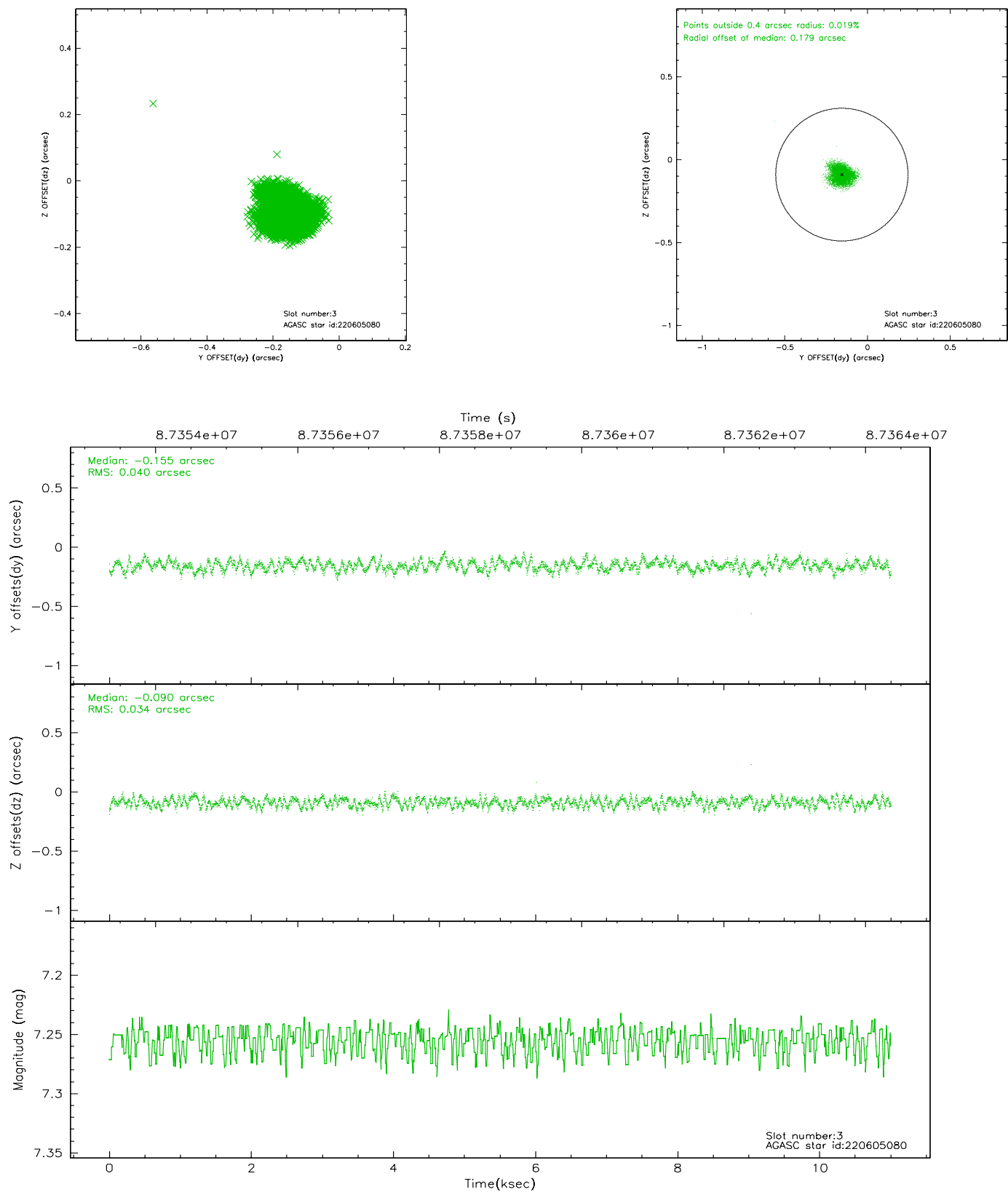
### Slot Statistics

slot	status	id	mag	n_pts	med_dy	med_dz	dr1	dr2	ra	dec	mean_y	mean_z
0	FID	ACIS-S-1	7.19	2685	-0.027	0.016	0.009	0.018	0.000000	0.000000	941.19	-1722.03
1	FID	ACIS-S-5	7.24	2685	0.037	-0.003	0.006	0.010	0.000000	0.000000	-1807.50	174.99
2	FID	ACIS-S-6	7.35	2685	-0.031	-0.002	0.011	0.021	0.000000	0.000000	406.21	819.51
3	GUIDE	220605080	7.25	5369	-0.155	-0.090	0.056	0.088	328.570760	18.022857	-1244.36	439.79
4	GUIDE	220607984	7.78	5369	-0.073	-0.033	0.055	0.086	328.266670	17.903928	-656.87	-520.43
5	GUIDE	220604480	8.50	5368	-0.022	0.075	0.065	0.103	328.811996	18.002482	-1303.96	1266.86
6	GUIDE	218897456	8.89	5368	0.119	-0.066	0.086	0.133	327.959264	17.146658	2201.28	-1135.16
7	GUIDE	220595632	9.30	5367	0.129	0.110	0.100	0.164	328.930788	17.108977	1806.07	2186.34

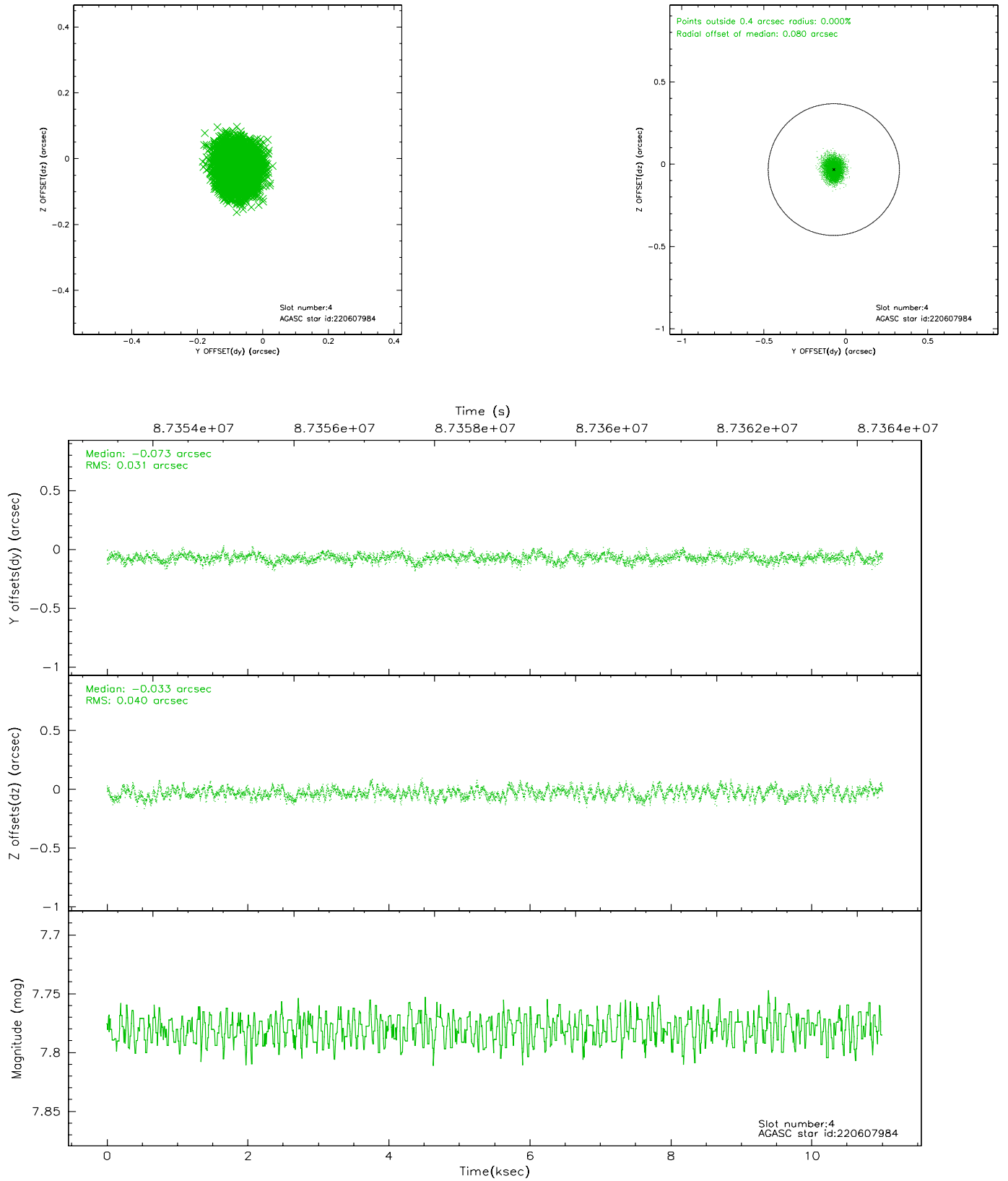


## 2.4 Star Slots

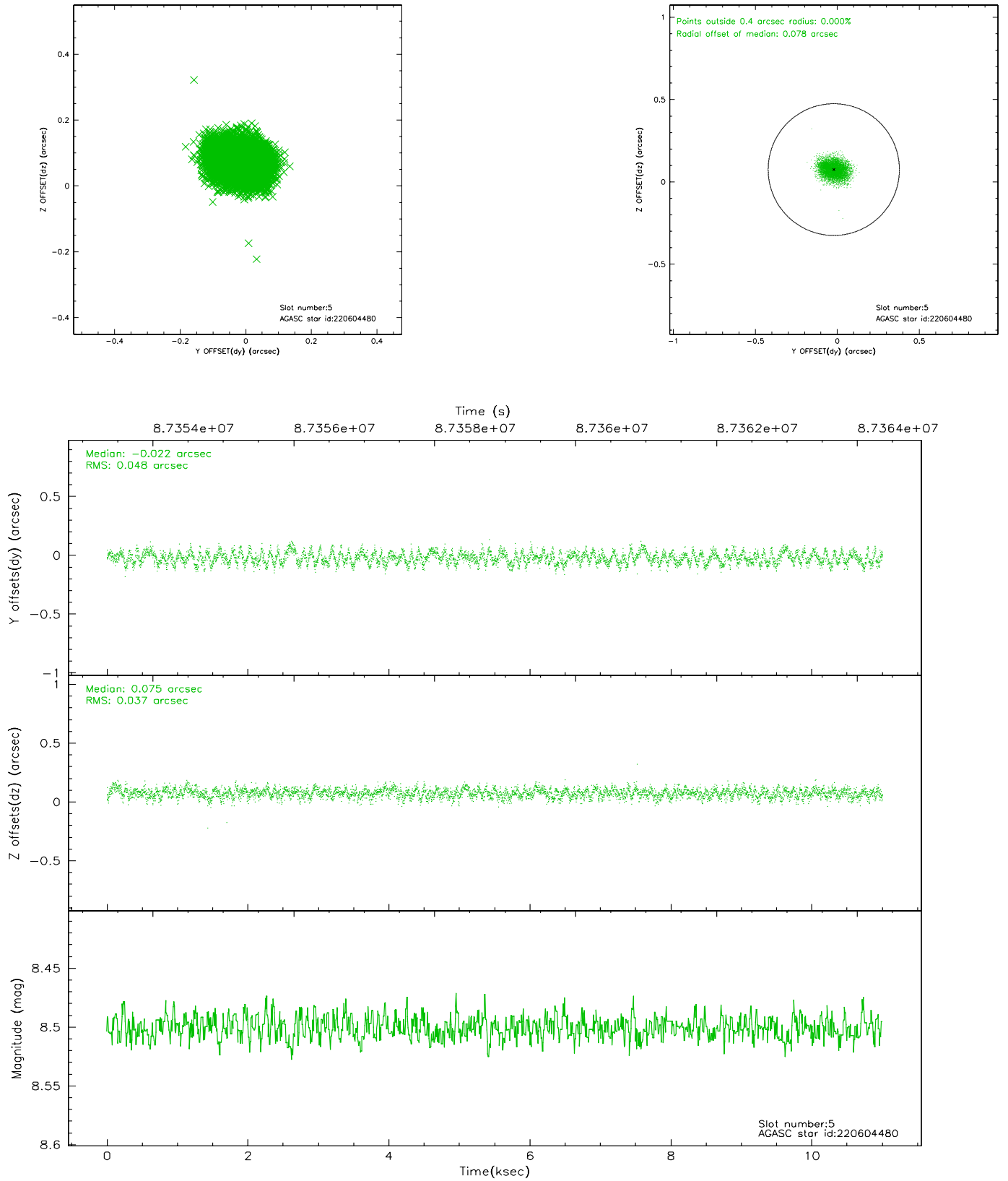
### 2.4.1 Slot 3



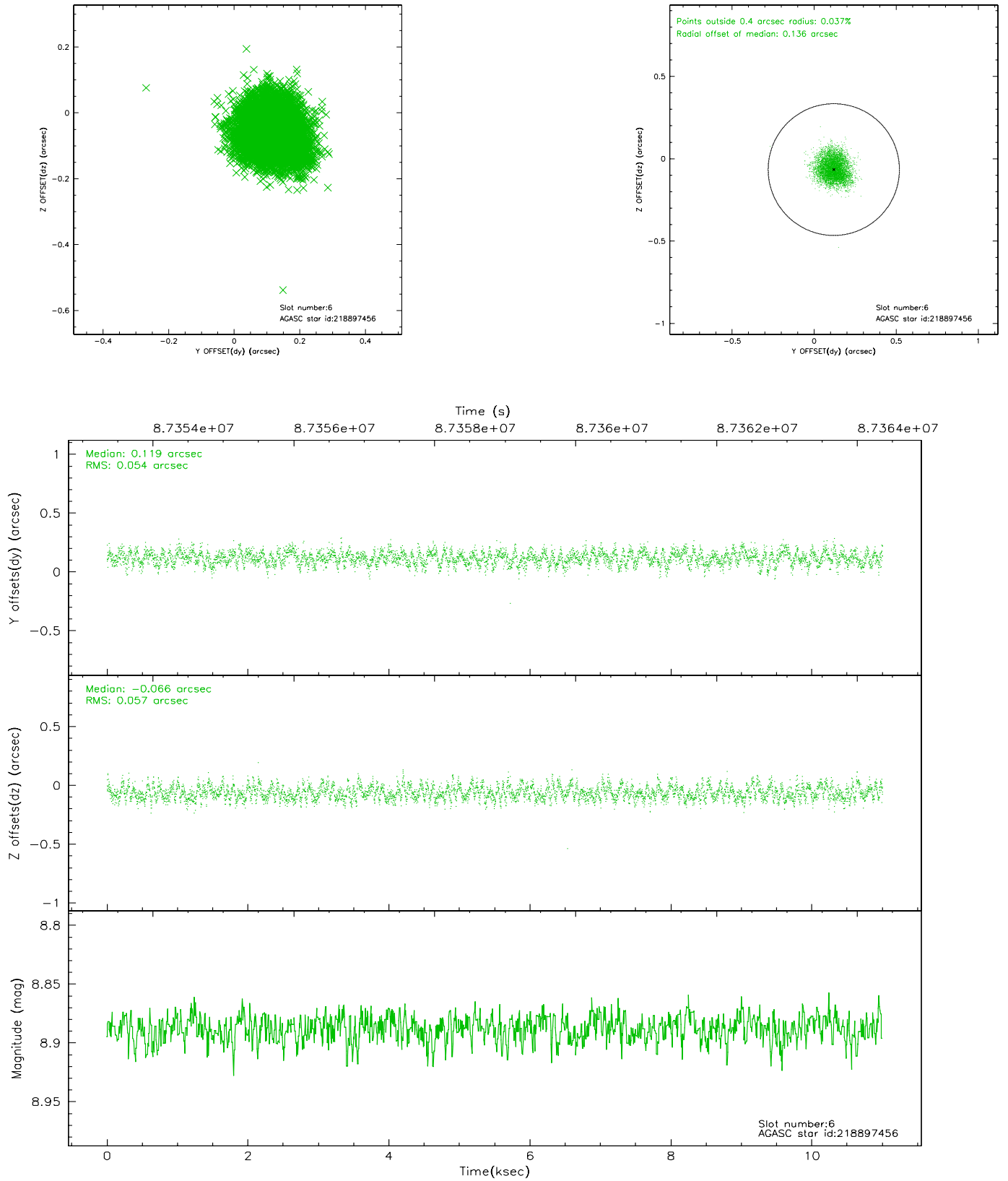
## 2.4.2 Slot 4



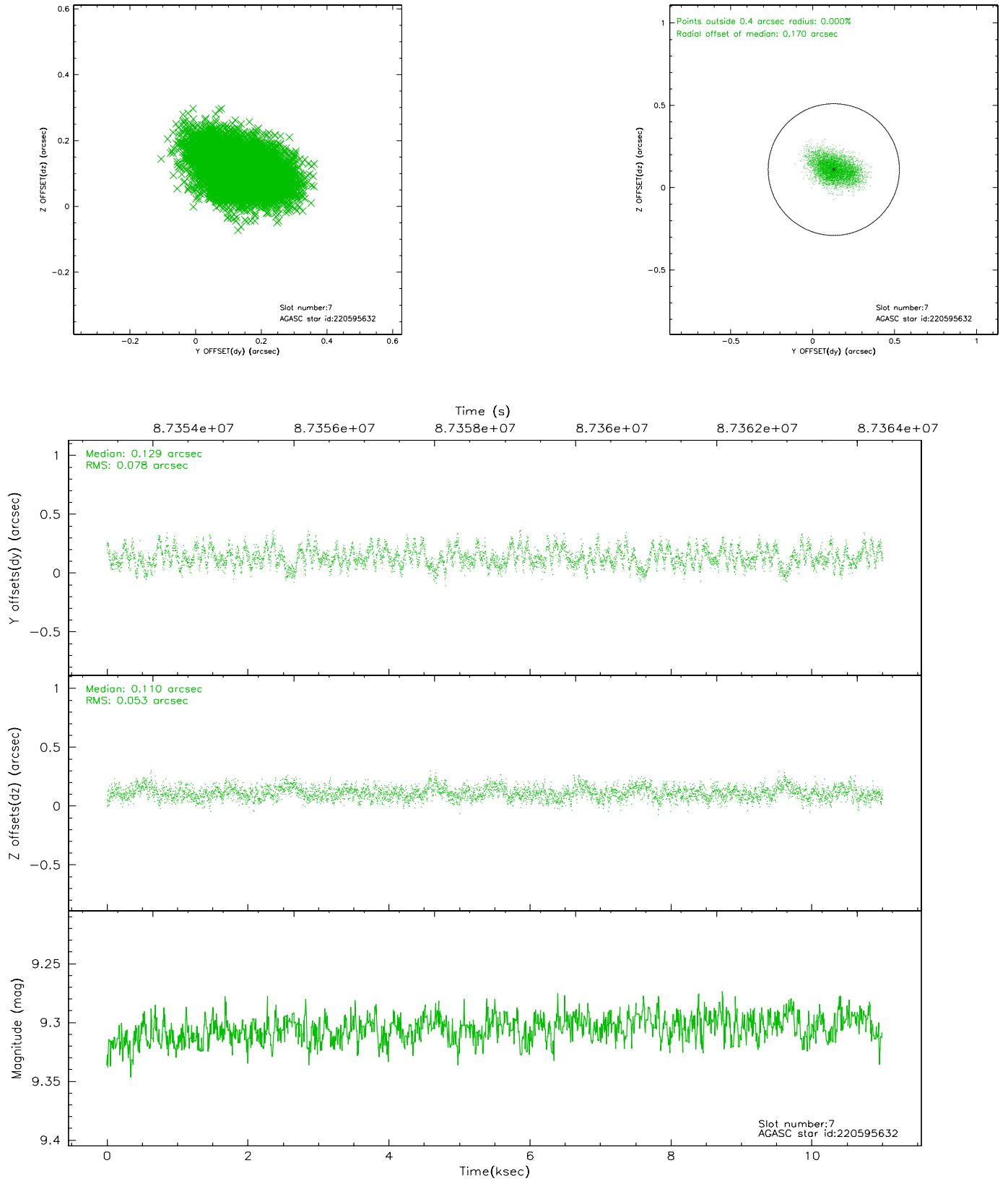
### 2.4.3 Slot 5



## 2.4.4 Slot 6

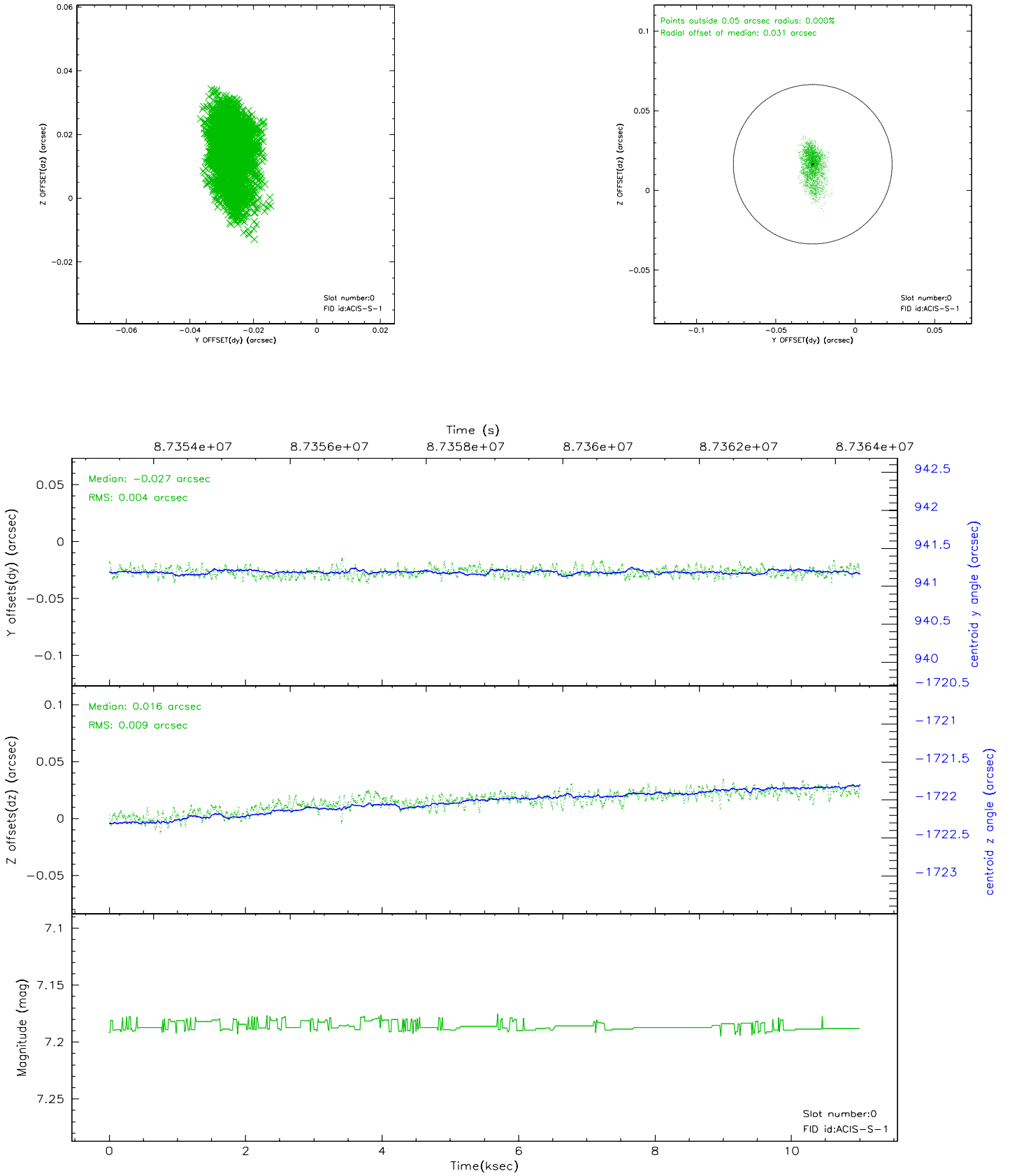


## 2.4.5 Slot 7

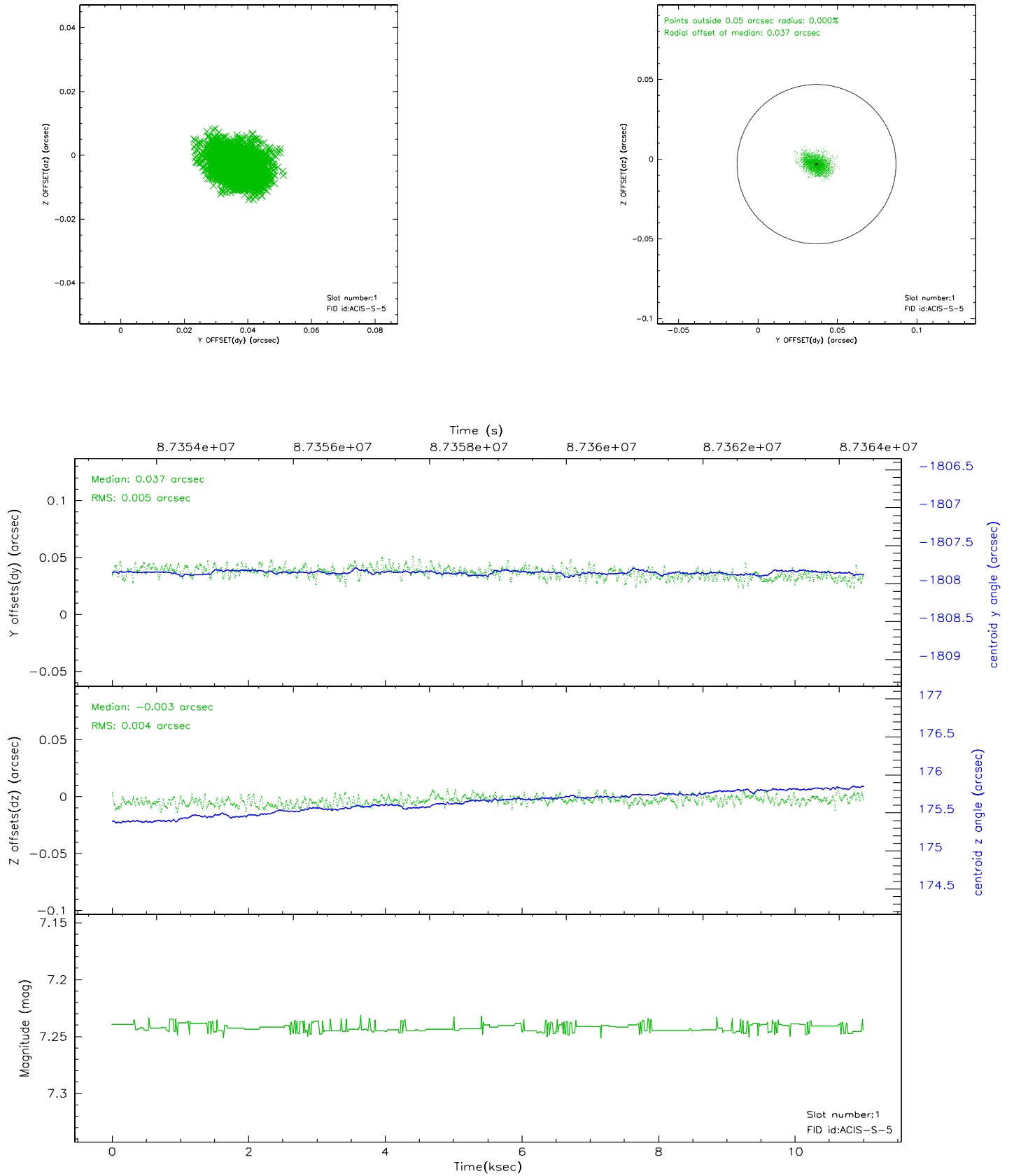


## 2.5 FID Slots

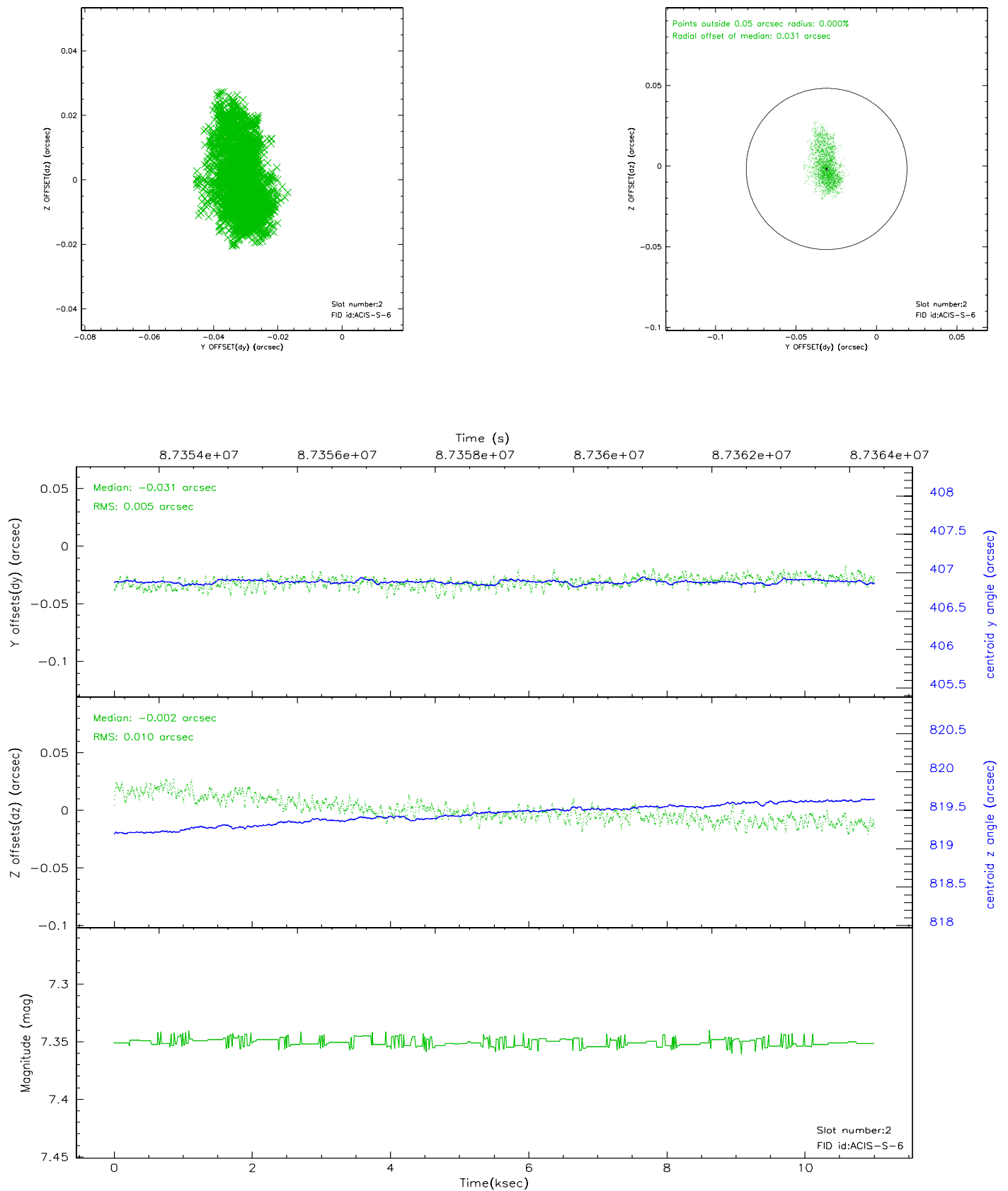
### 2.5.1 Slot 0



## 2.5.2 Slot 1

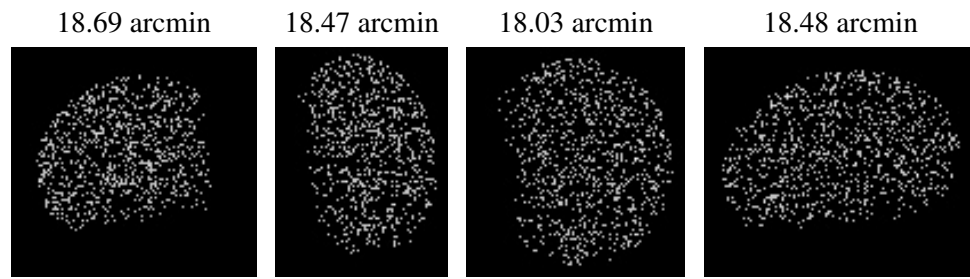


### 2.5.3 Slot 2





### 3 Point Sources



## A Summary

### A.1 Status

V&V Scientist	Beth Sundheim
V&V Date (YYYY-MM-DD)	2007.06.11
V&V Edition	1
V&V Disposition and Status	OK
V&V Charge Time	9.955

### A.2 Comments