

V&V Reference Report

L2 ASCDS Version : 7.6.9

Observation 2419 - L2 Version 001
Chandra X-Ray Center

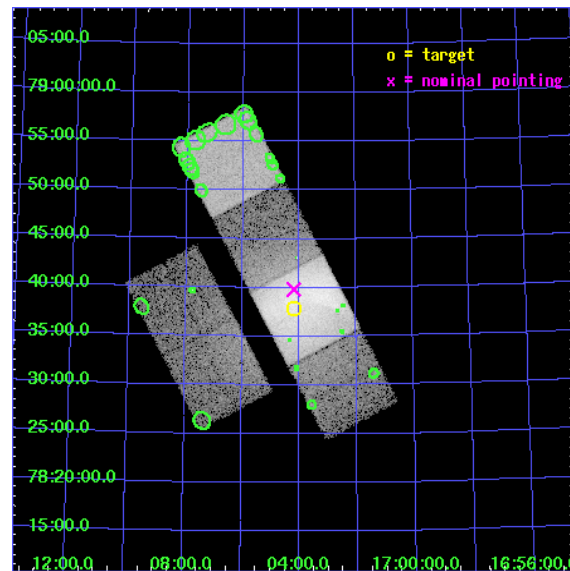
L2 Processing Date : Nov 6 2006

Contents

1	Front	2
2	OBI	3
2.1	OBI	3
2.1.1	Images	3
2.1.2	Bias	3
2.1.3	Parameters	4
2.1.4	Events	4
2.2	Compared Parameters	5
2.3	Aspect	6
2.4	Star Slots	9
2.4.1	Slot 3	9
2.4.2	Slot 4	10
2.4.3	Slot 5	11
2.4.4	Slot 6	12
2.4.5	Slot 7	13
2.5	FID Slots	14
2.5.1	Slot 0	14
2.5.2	Slot 1	15
2.5.3	Slot 2	16
3	Point Sources	17
A	Summary	18
A.1	Status	18
A.2	Comments	18

1 Front

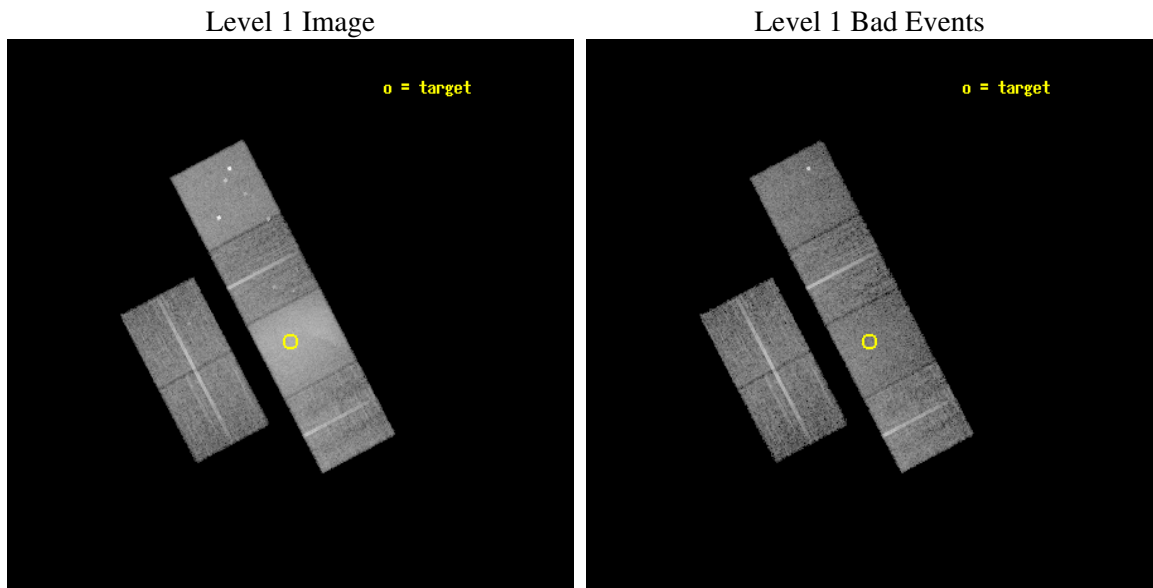
seq_num	800108
obs_id	2419
title	MASS DISTRIBUTIONS OF RELAXED CLUSTERS
observer	Dr. Stephen Murray
object	A2256
dtcycle	0
cycle	P
ra_targ	256.04479
dec_targ	78.631
ra_nom	256.04655492146
dec_nom	78.663787672251
roll_nom	62.38397129903
revision	2
ontime	12022.400011197
livetime	11870.165143235
ontime2	12022.400011197
ontime3	12022.400011197
ontime5	12022.400011197
ontime6	12022.400011197
ontime7	12022.400011197
ontime8	12022.400011197
l2events	222107



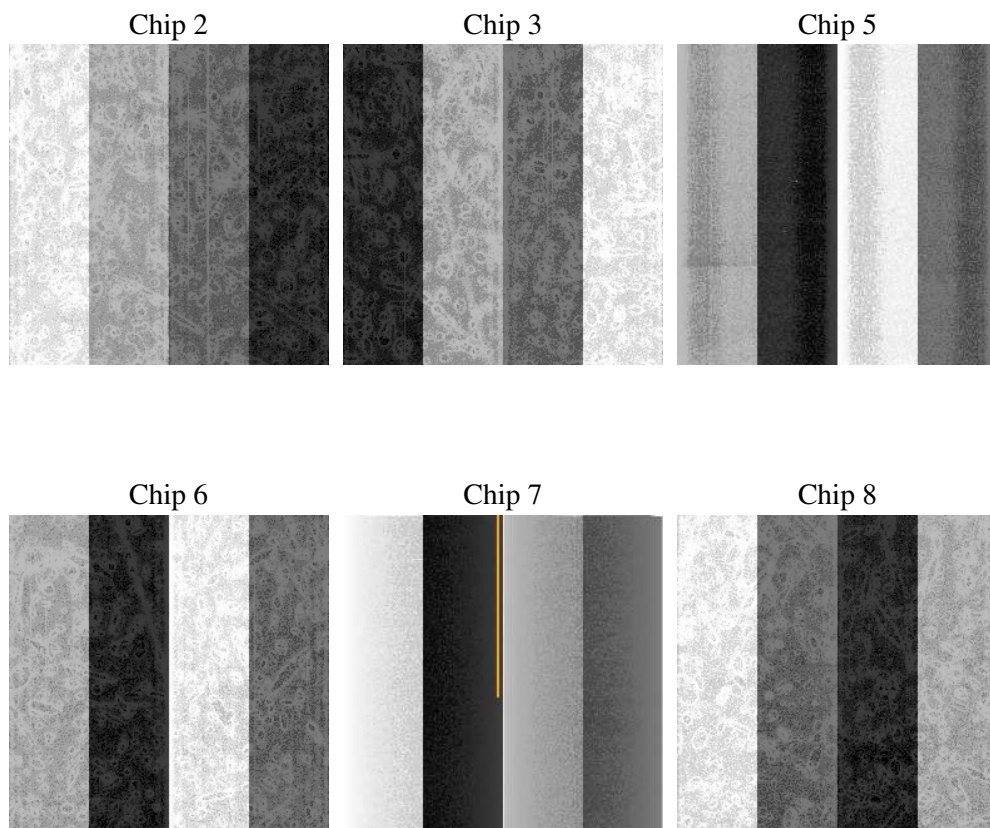
2 OBI

2.1 OBI

2.1.1 Images



2.1.2 Bias



2.1.3 Parameters

obi_num	0
ascdsver	7.6.9
caldbver	3.2.3
date	2006-11-06T14:21:25
revision	2

sched_exp_time	12100.000000
ontime	12027.3461335
ontime2	12027.3461335
ontime3	12027.3461335
ontime5	12027.346163422
ontime6	12027.3461335
ontime7	12027.3461335
ontime8	12027.3461335
l1events	636210

2.1.4 Events

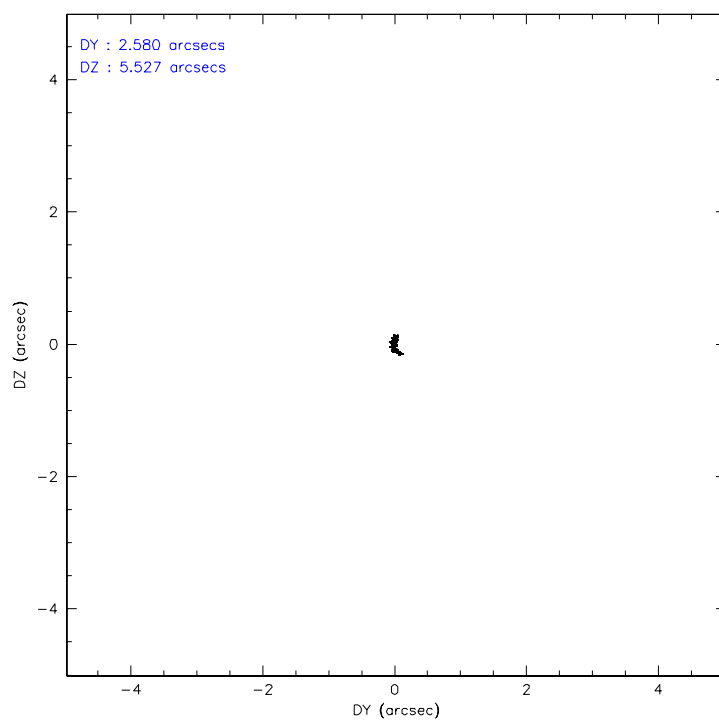
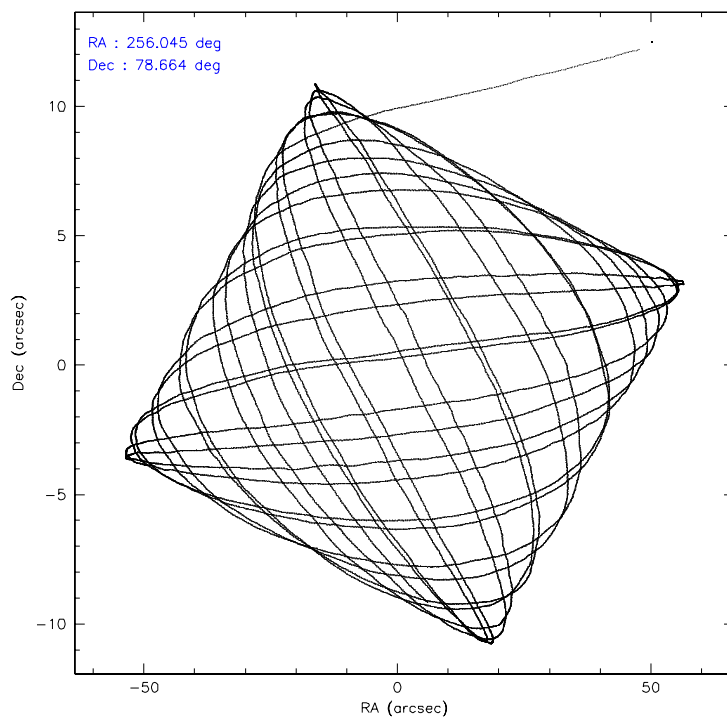
	ccd 2	ccd 3	ccd 5	ccd 6	ccd 7	ccd 8
level 1 events	79878	75922	115170	84569	182031	98640
rejected events	68622	62434	59698	66542	59323	74679
rejected %	85%	82%	51%	78%	32%	75%

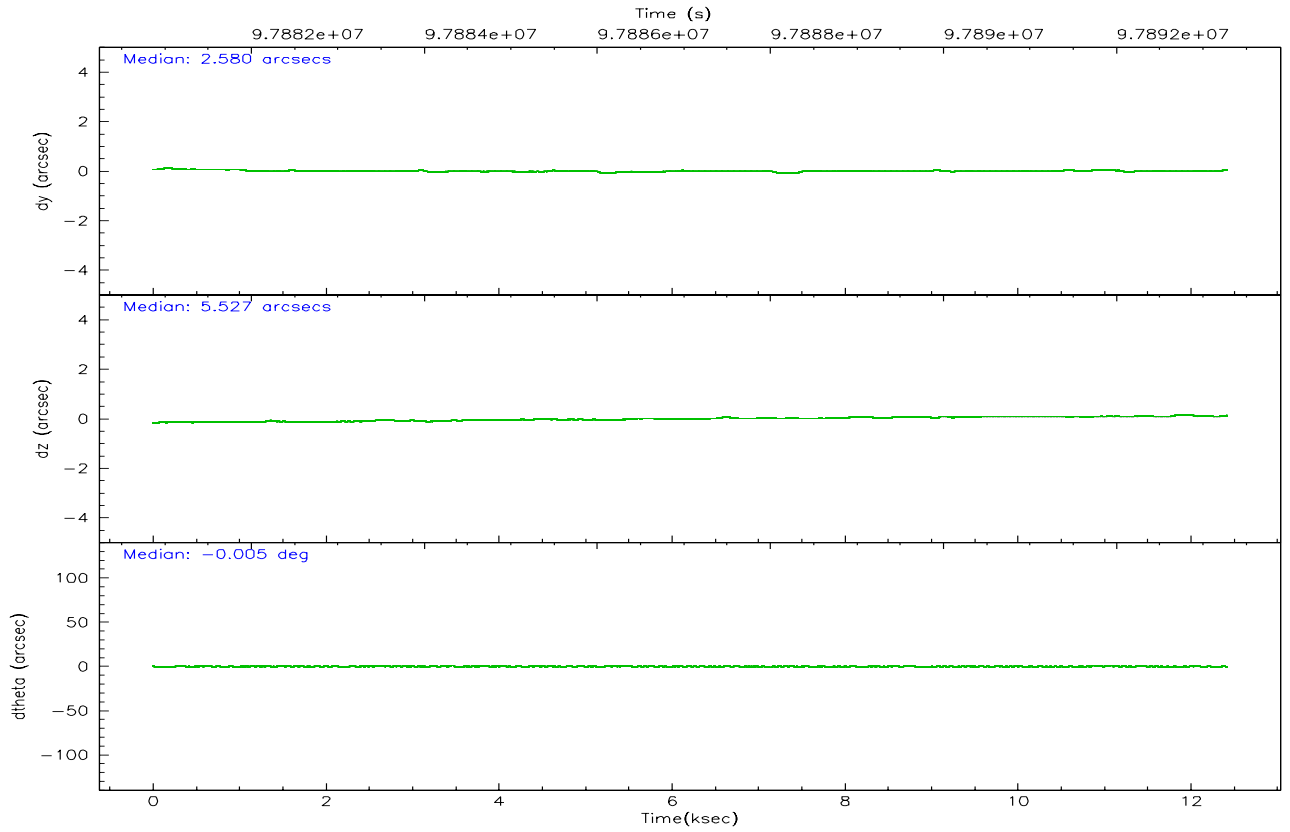
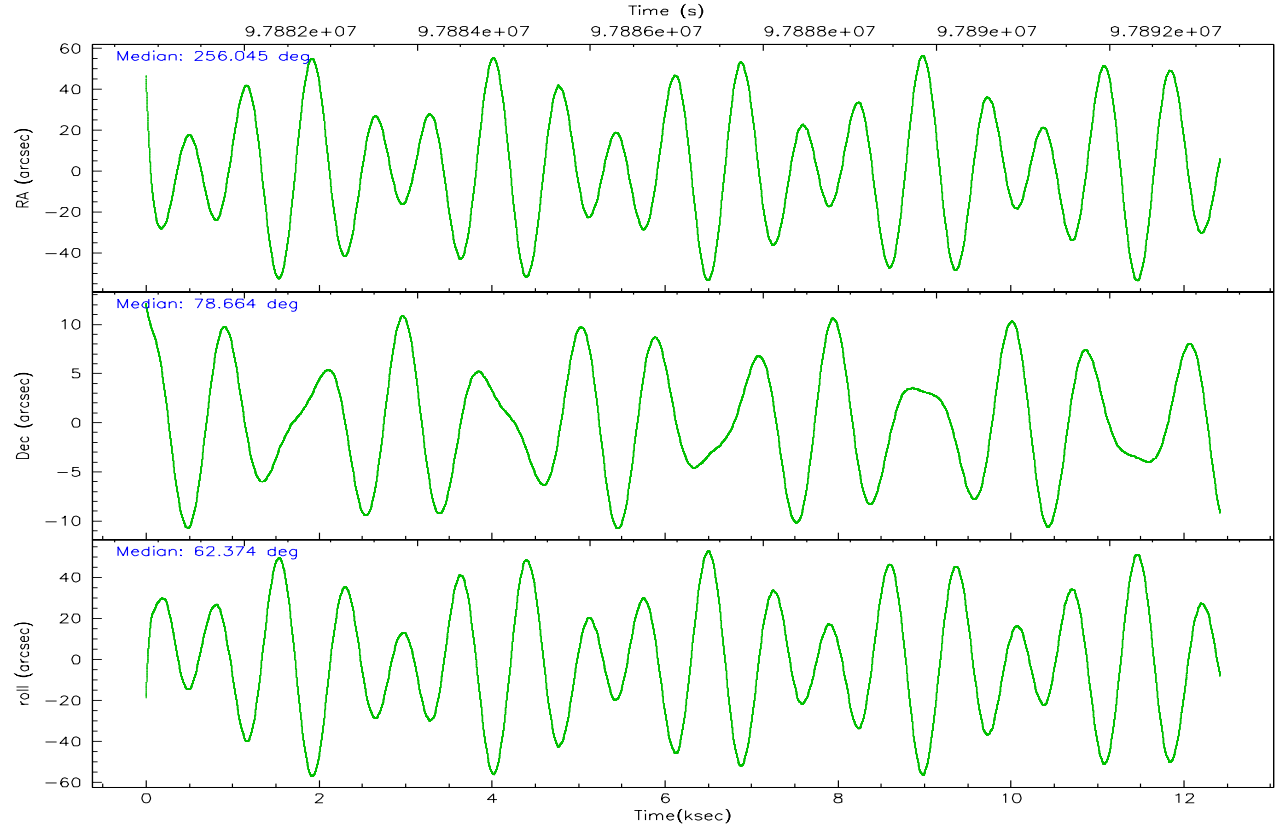
	ccd 2	ccd 3	ccd 5	ccd 6	ccd 7	ccd 8
grade 0 events	5800	7858	7166	11287	25279	10634
	7%	10%	6%	13%	13%	10%
grade 1 events	50	57	93	65	68	71
	0%	0%	0%	0%	0%	0%
grade 2 events	2178	2066	16636	2611	32644	4351
	2%	2%	14%	3%	17%	4%
grade 3 events	872	950	1478	1150	11154	2239
	1%	1%	1%	1%	6%	2%
grade 4 events	865	1000	1348	1114	10992	2034
	1%	1%	1%	1%	6%	2%
grade 5 events	2484	2867	5539	3051	6963	3988
	3%	3%	4%	3%	3%	4%
grade 6 events	1543	1618	28860	1873	42669	4711
	1%	2%	25%	2%	23%	4%
grade 7 events	66086	59506	54050	63418	52262	70612
	82%	78%	46%	74%	28%	71%

2.2 Compared Parameters

Parameter	Planned	Actual	Parameter	Planned	Actual
Instrument	ACIS	ACIS	Obspar format version number	6	6
Detector	ACIS-235678	ACIS-235678	Obspar file type	PREDICTED	ACTUAL
Grating	NONE	NONE	Obspar update status	NONE	UPDATED
Data mode	FAINT	FAINT	Number of optional ACIS chips dropped	0	0
Observation mode	POINTING	POINTING	On-chip summing requested	N	N
Pointing RA	256.053730	256.0465549214646	Subarray requested	NONE	NONE
Pointing Dec	78.636484	78.66378767225135	Alternating exposures requested	N	N
Pointing Roll	62.220277	62.38397129903014	Primary exposure time	3.200000	3.2
SIM focus pos (mm)	-0.684267	-0.6828225247311905			
SIM defocus (mm)	0	0.001444936568705701			
SIM translation stage pos (mm)	-190.132523	-190.1400660498719			
SIM translation stage offset (mm)	0	0.00754346686406393			
Observation start time	97881184.184000	97880158.248698			
Observation start date	2001-02-06T21:12:00	2001-02-06T20:55:58			
Observation end time	97893284.184000	97894040.849233			
Observation end date	2001-02-07T00:33:40	2001-02-07T00:47:20			
Read mode	TIMED	TIMED			

2.3 Aspect



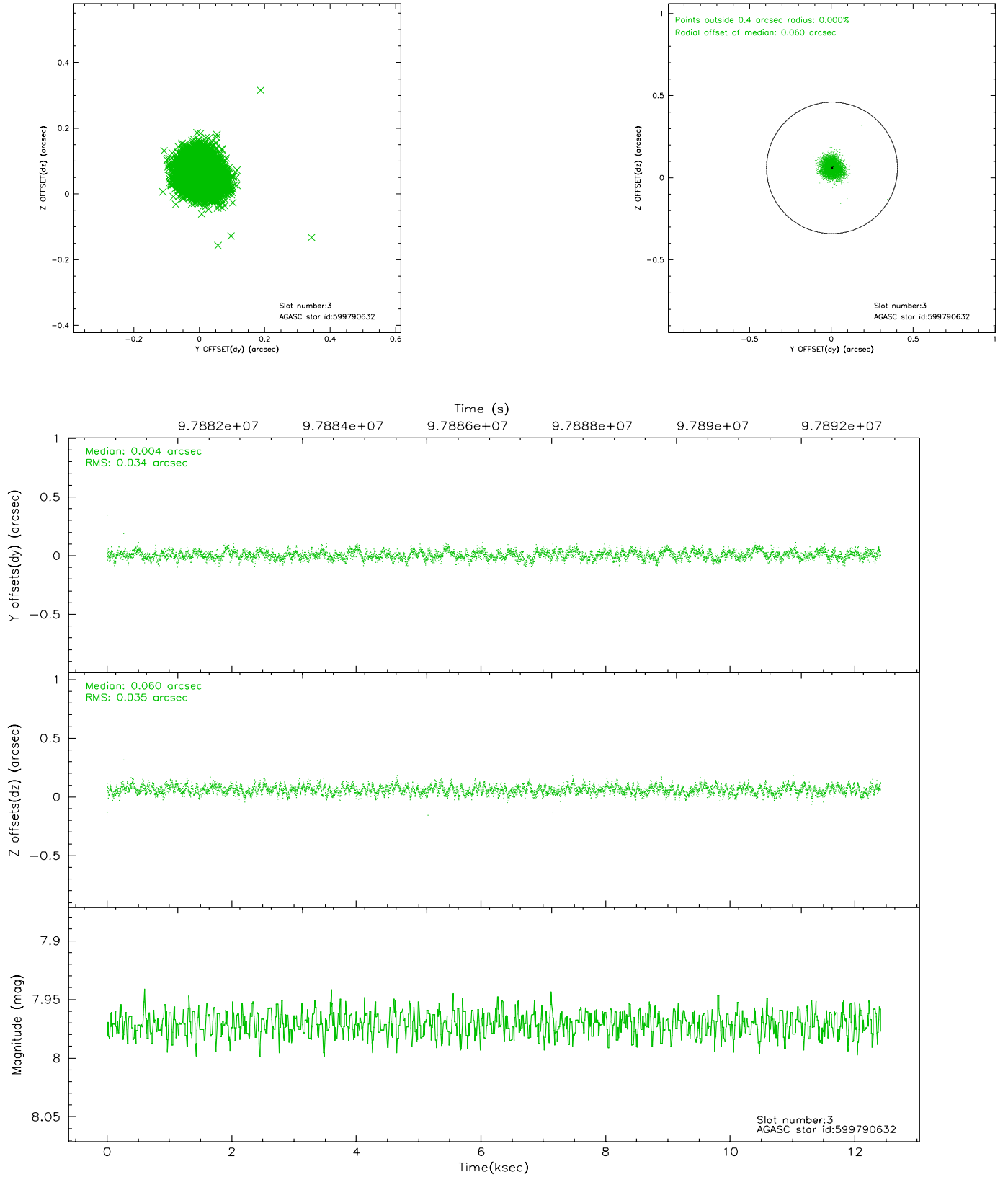


Slot Statistics

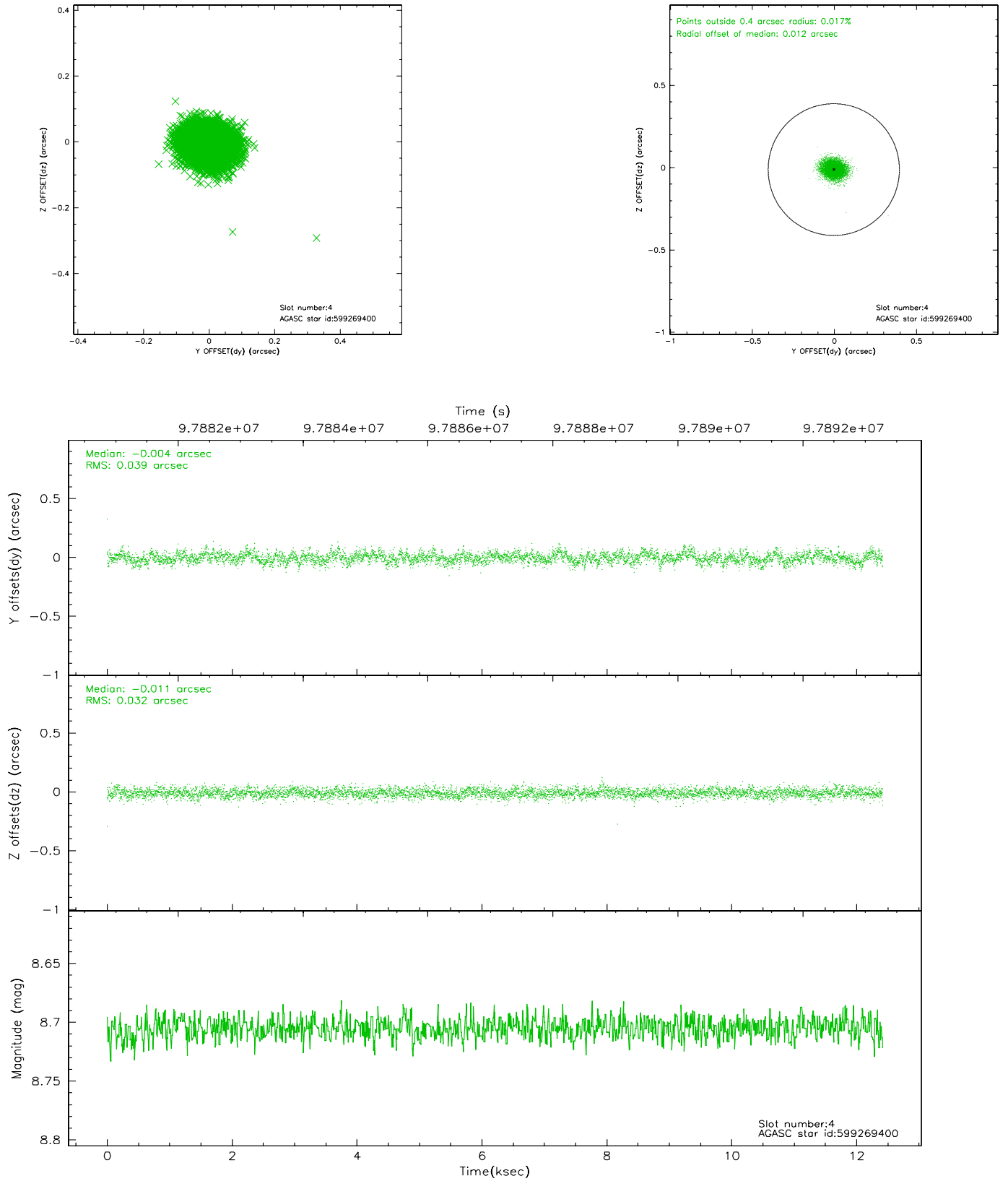
slot	status	id	mag	n_pts	med_dy	med_dz	dr1	dr2	ra	dec	mean_y	mean_z
0	FID	ACIS-S-2	7.12	3028	-0.020	0.031	0.007	0.011	0.000000	0.000000	-755.20	-1726.63
1	FID	ACIS-S-4	7.20	3029	-0.081	0.001	0.006	0.012	0.000000	0.000000	2157.80	181.47
2	FID	ACIS-S-5	7.24	3030	0.069	-0.023	0.007	0.011	0.000000	0.000000	-1807.48	175.49
3	GUIDE	599790632	7.97	6060	0.004	0.060	0.052	0.082	257.096793	78.828804	957.76	-318.46
4	GUIDE	599269400	8.71	6059	-0.004	-0.011	0.052	0.087	254.398050	78.499006	-976.48	827.44
5	GUIDE	599789480	8.84	6059	-0.022	-0.027	0.071	0.113	253.845424	78.947438	305.56	1882.66
6	GUIDE	599785600	9.23	6057	0.034	-0.060	0.087	0.146	259.639486	78.927525	2149.87	-1668.38
7	GUIDE	599263768	9.70	6057	-0.013	0.037	0.098	0.161	258.248120	78.312570	-258.40	-1946.10

2.4 Star Slots

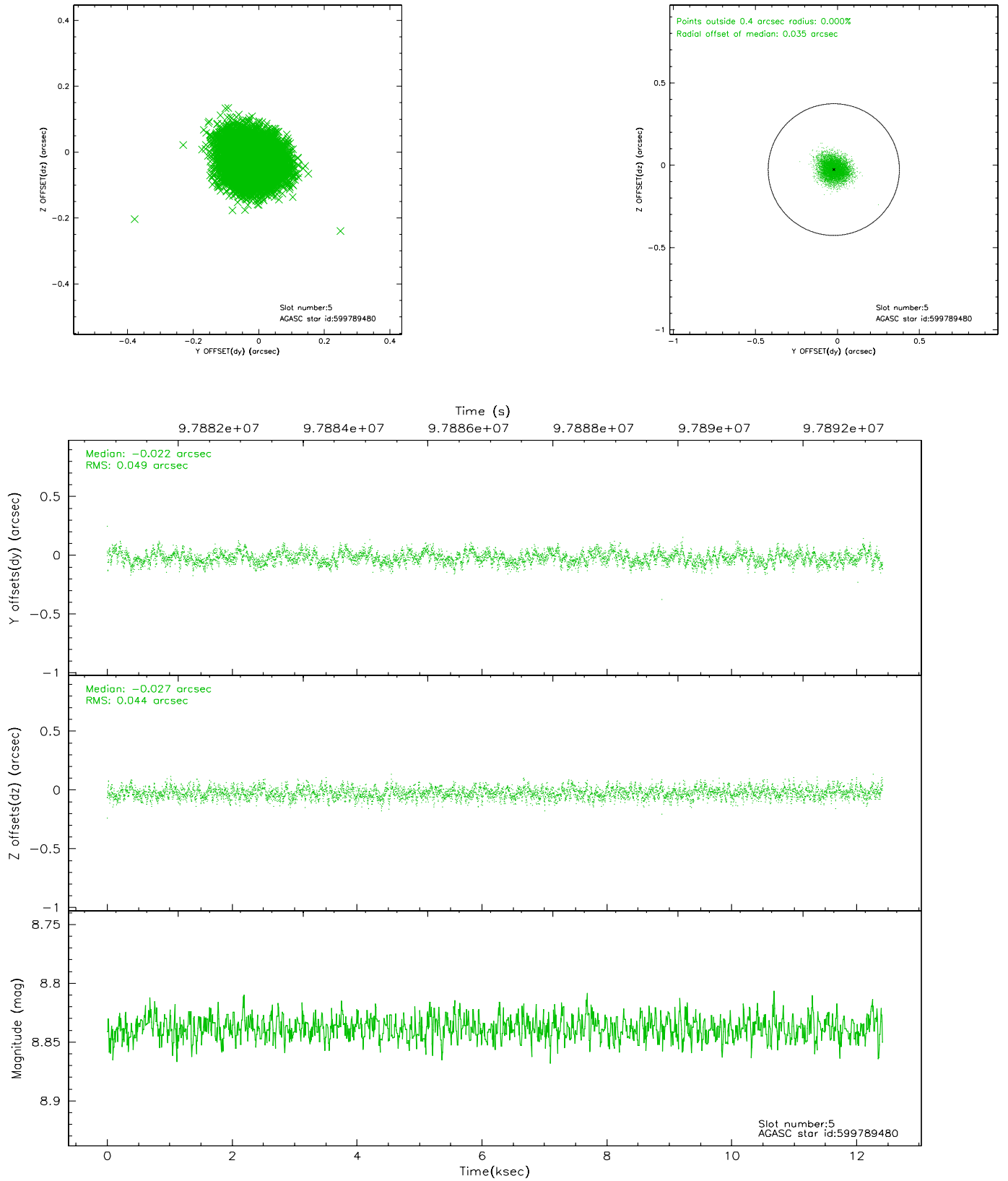
2.4.1 Slot 3



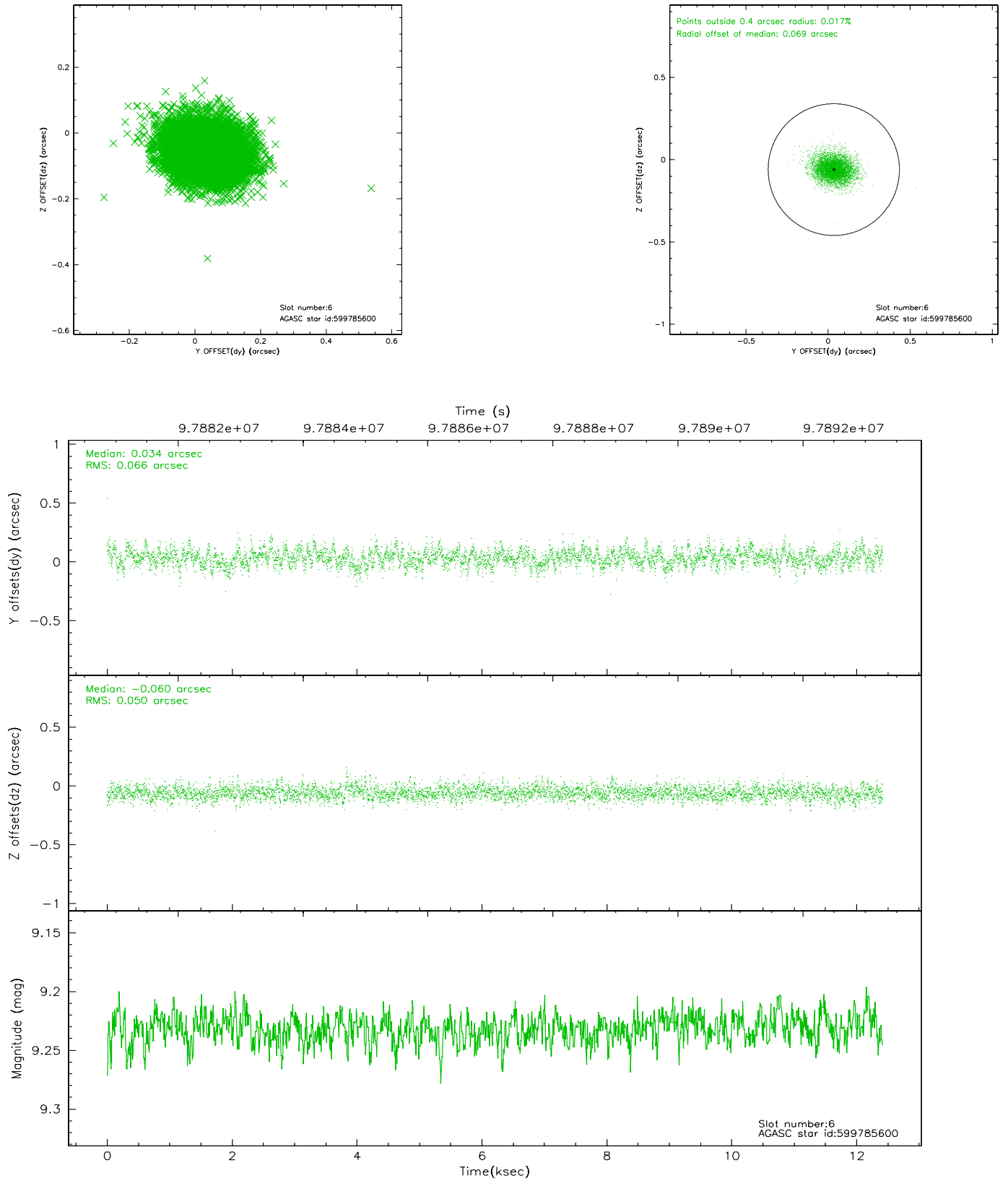
2.4.2 Slot 4



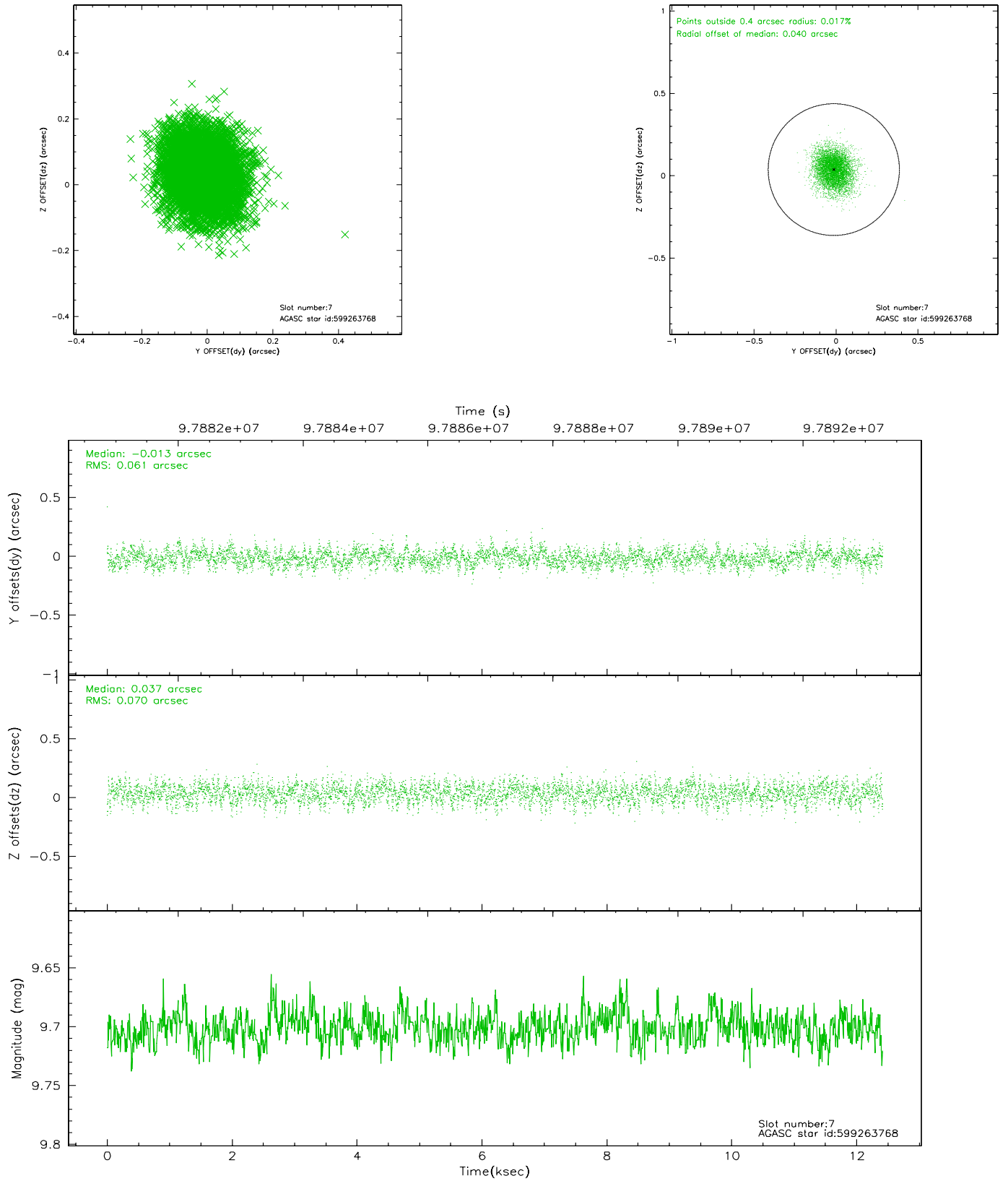
2.4.3 Slot 5



2.4.4 Slot 6

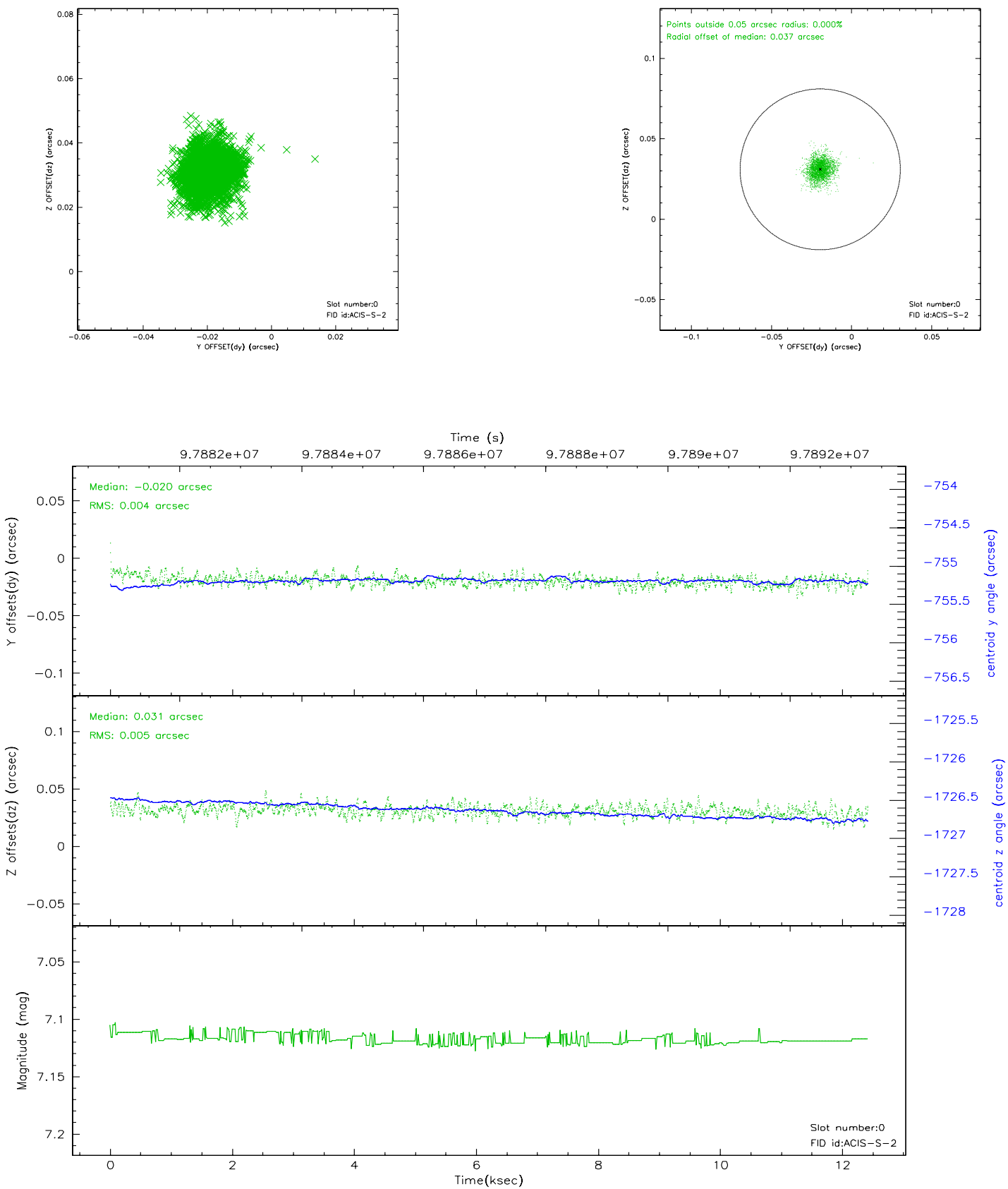


2.4.5 Slot 7

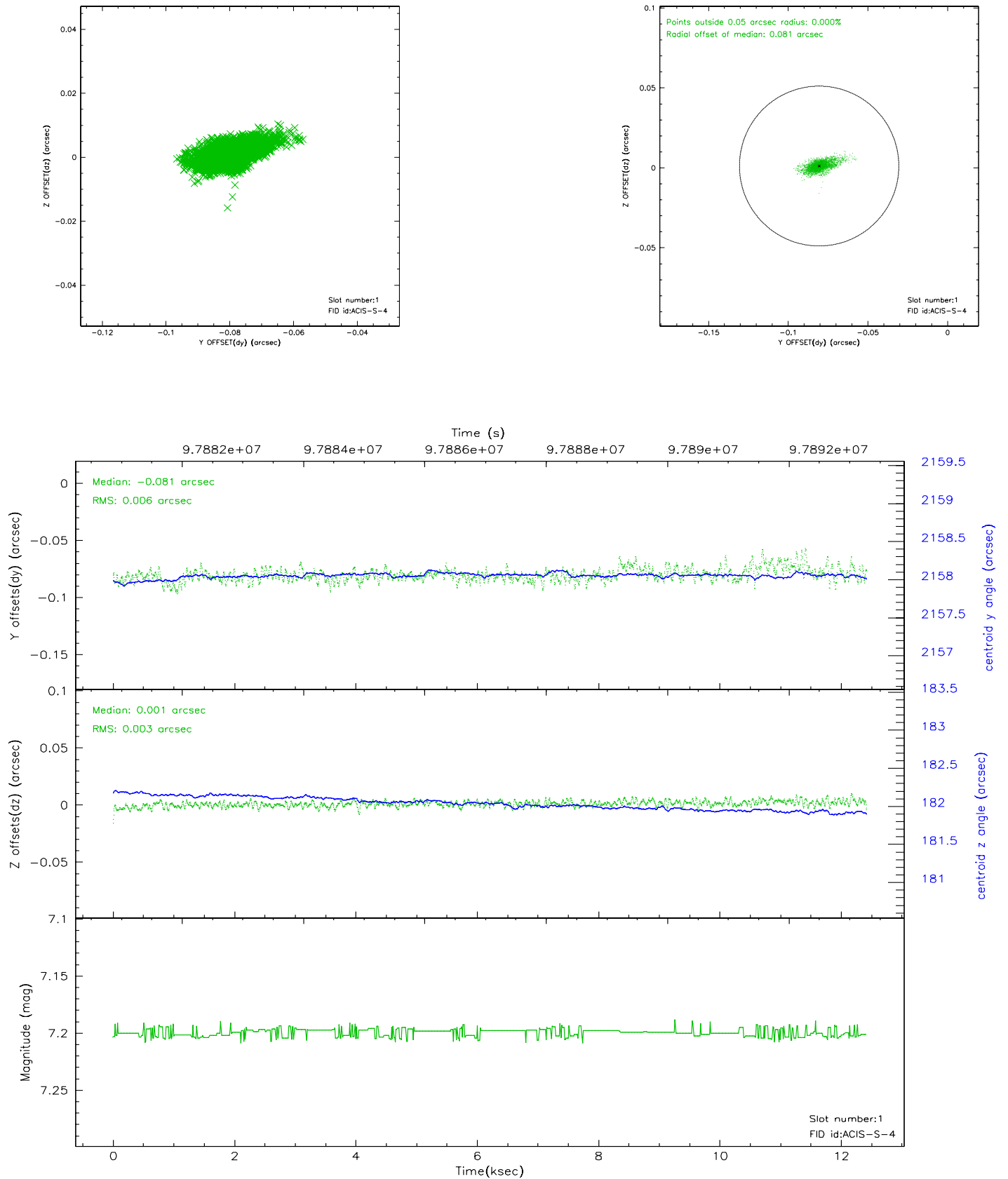


2.5 FID Slots

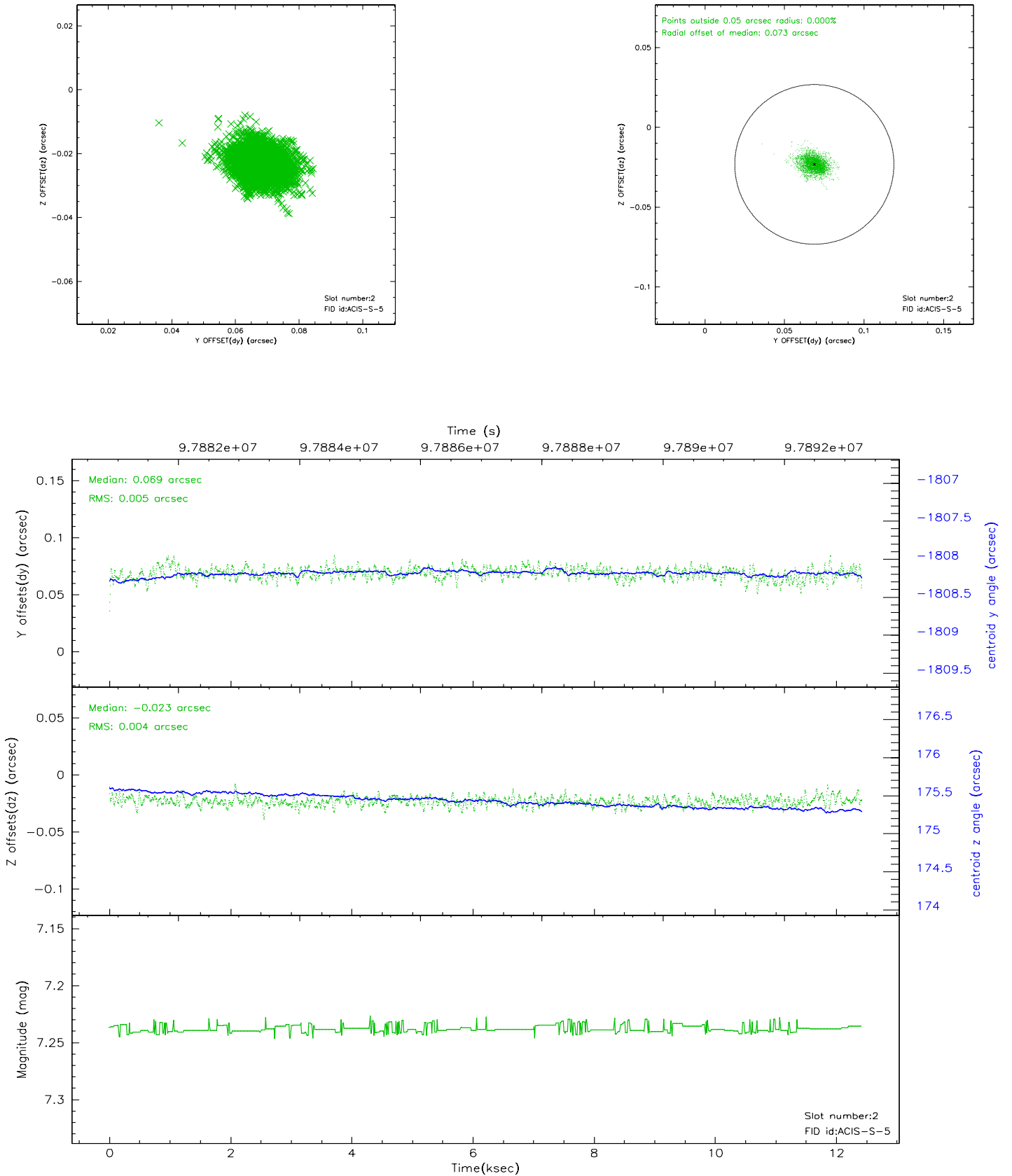
2.5.1 Slot 0



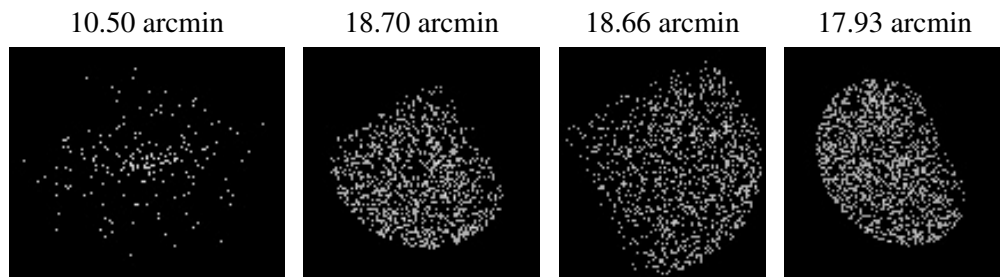
2.5.2 Slot 1



2.5.3 Slot 2



3 Point Sources



A Summary

A.1 Status

V&V Scientist	Beth Sundheim
V&V Date (YYYY-MM-DD)	2006.11.06
V&V Edition	1
V&V Disposition and Status	OK
V&V Charge Time	12.022

A.2 Comments