

V&V Reference Report

L2 ASCDS Version : 7.6.10

Observation 2320 - L2 Version 001
Chandra X-Ray Center

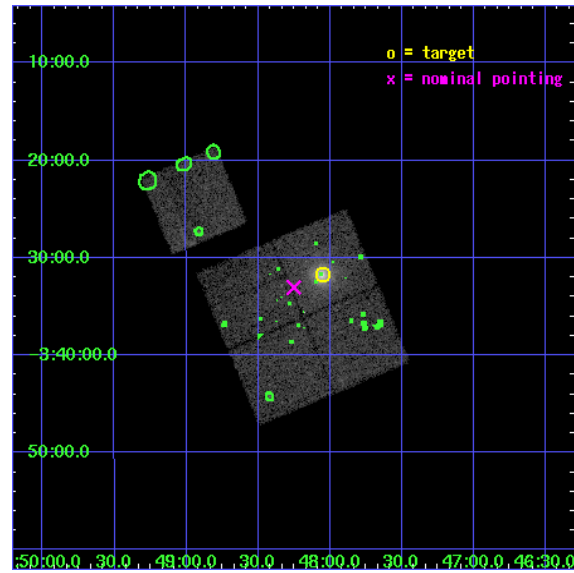
L2 Processing Date : Jun 16 2007

Contents

1	Front	2
2	OBI	3
2.1	OBI	3
2.1.1	Images	3
2.1.2	Bias	3
2.1.3	Parameters	4
2.1.4	Events	4
2.2	Compared Parameters	5
2.3	Aspect	6
2.4	Star Slots	9
2.4.1	Slot 3	9
2.4.2	Slot 4	10
2.4.3	Slot 5	11
2.4.4	Slot 6	12
2.4.5	Slot 7	13
2.5	FID Slots	14
2.5.1	Slot 0	14
2.5.2	Slot 1	15
2.5.3	Slot 2	16
3	Point Sources	17
A	Summary	18
A.1	Status	18
A.2	Comments	18

1 Front

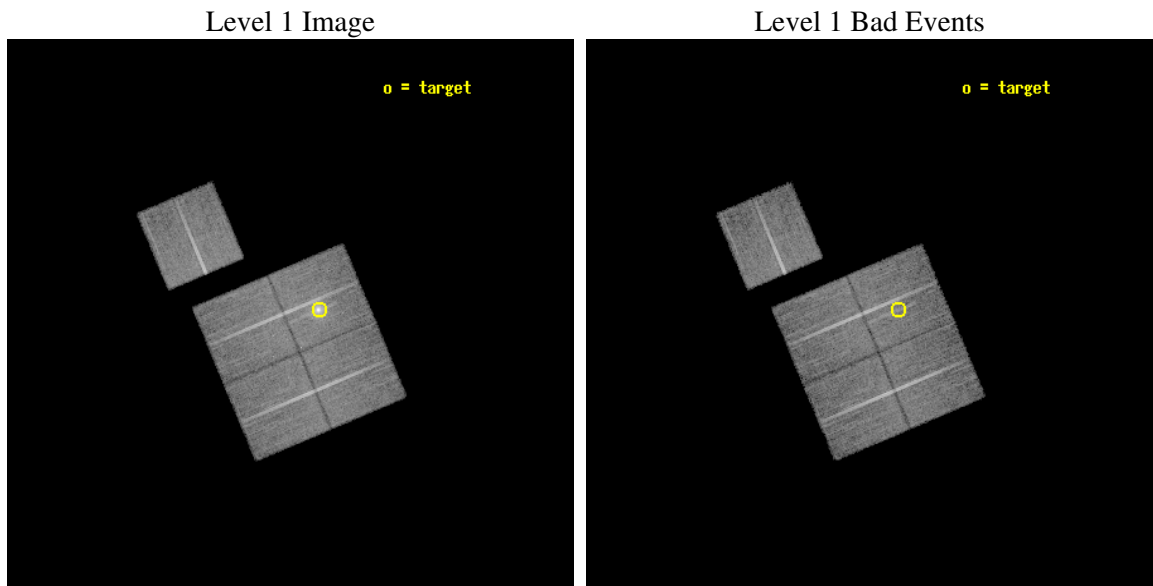
seq_num	800171
obs_id	2320
title	DETERMINATION OF H0/Q0
observer	DR. LEON VANSPEYBROECK
object	A383
dtcycle	0
cycle	P
ra_targ	42.01325
dec_targ	-3.527847
ra_nom	42.062761177799
dec_nom	-3.5508677172803
roll_nom	337.20204123409
revision	2
ontime	19532.595177069
livetime	19285.26169582
ontime0	19548.174066603
ontime1	19539.077177331
ontime2	19545.559047952
ontime3	19532.595177069
ontime6	19545.559047952
l2events	75734



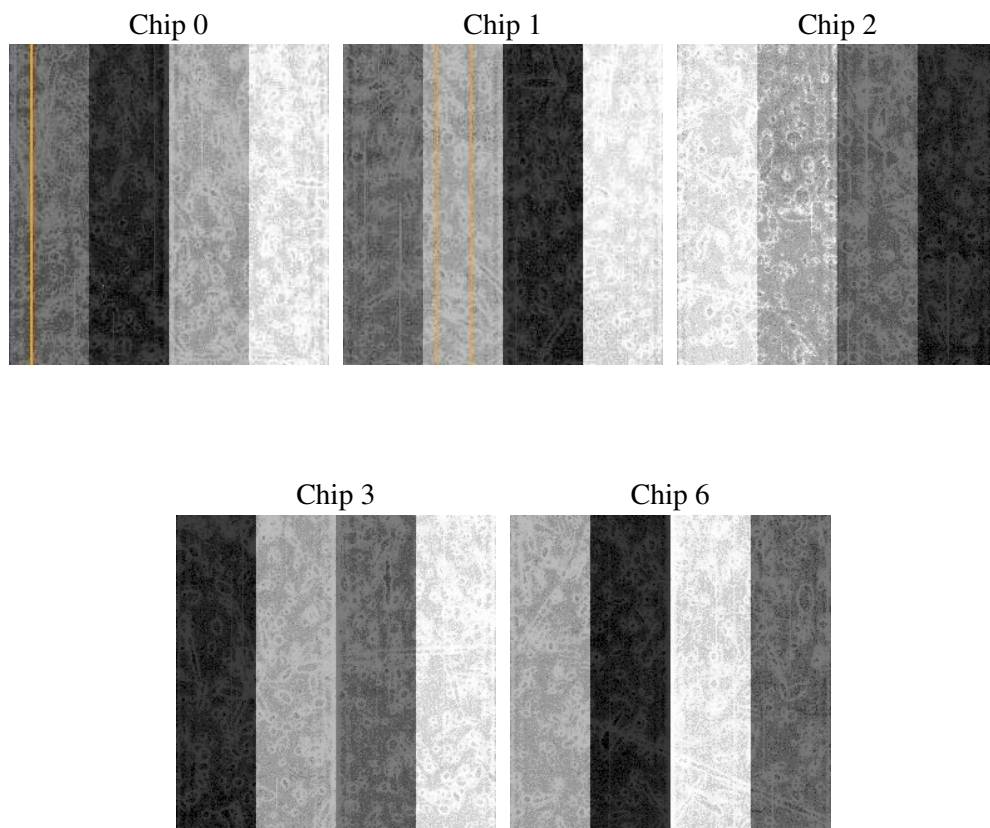
2 OBI

2.1 OBI

2.1.1 Images



2.1.2 Bias



2.1.3 Parameters

obi_num	0
ascdsver	7.6.10
caldbver	3.4.0
date	2007-06-16T14:05:13
revision	2

sched_exp_time	19650.000000
ontime	19532.595177069
ontime0	19548.174066603
ontime1	19539.077177331
ontime2	19545.559047952
ontime3	19532.595177069
ontime6	19545.559047952
l1events	577582

2.1.4 Events

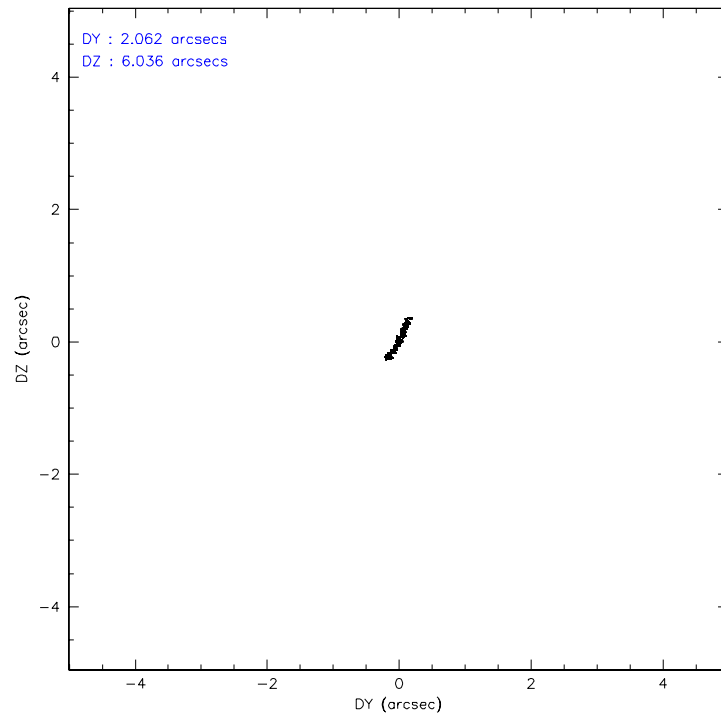
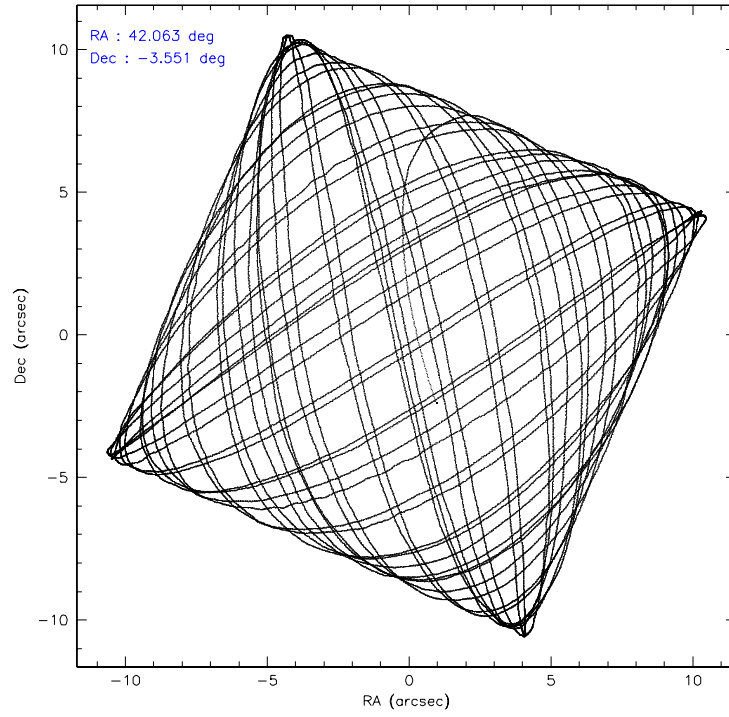
	ccd 0	ccd 1	ccd 2	ccd 3	ccd 6
level 1 events	110756	108360	113624	128999	115843
rejected events	96290	93500	99986	99489	102169
rejected %	86%	86%	87%	77%	88%

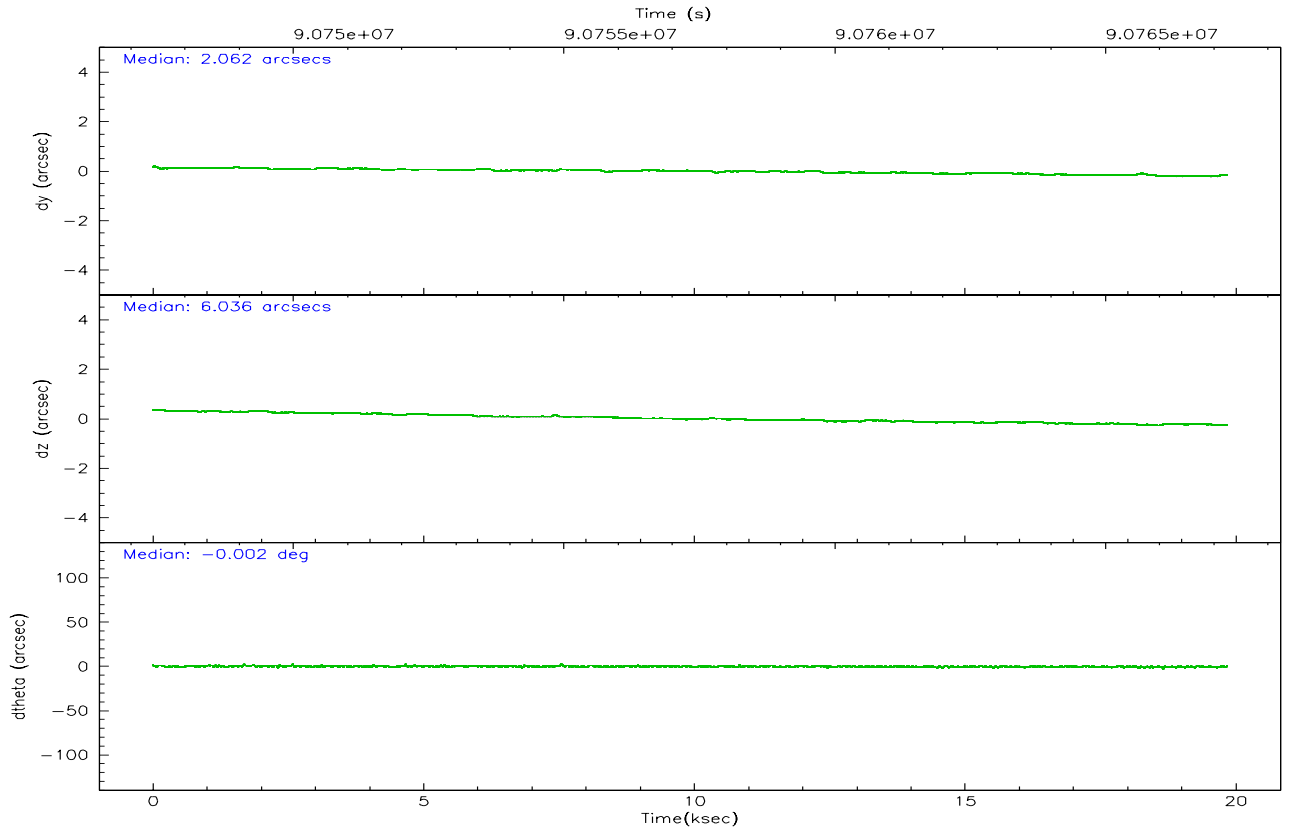
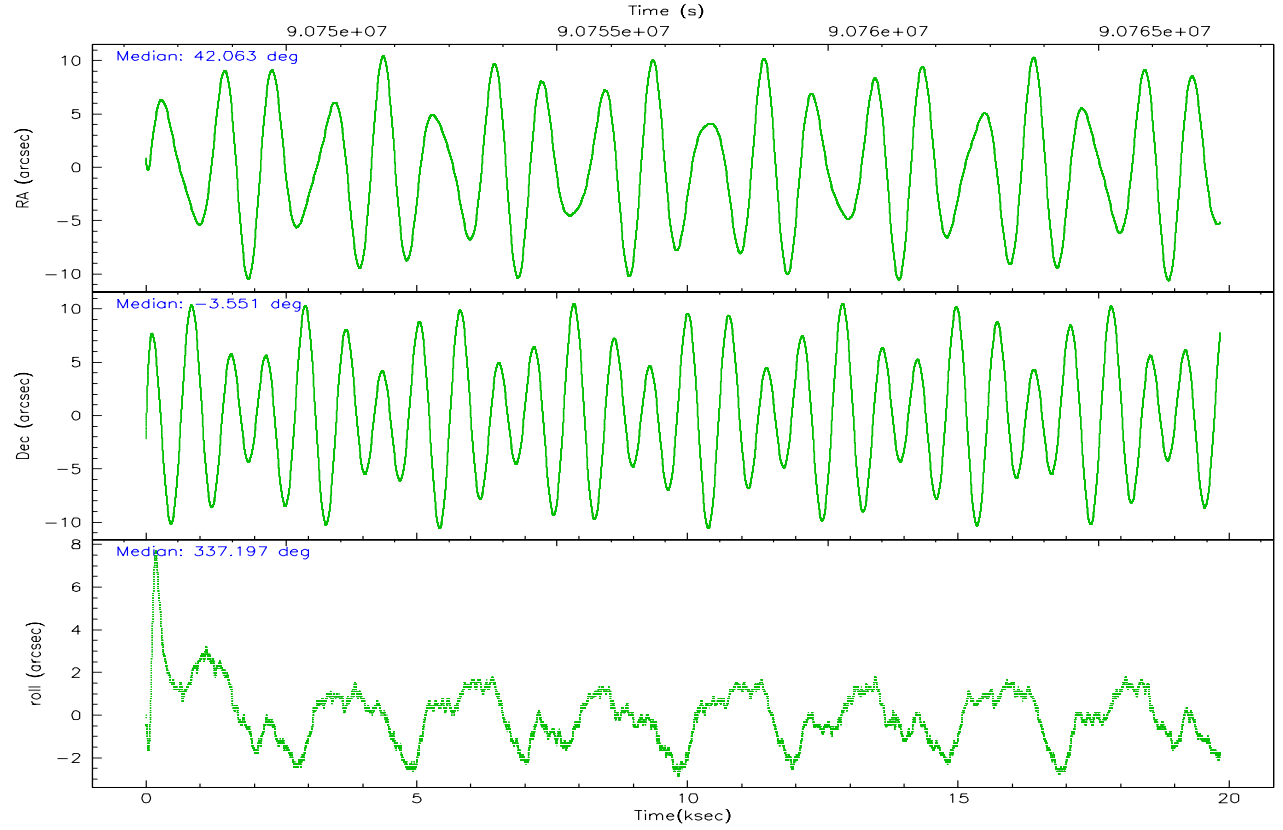
	ccd 0	ccd 1	ccd 2	ccd 3	ccd 6
grade 0 events	6348	6340	5909	19303	5824
	5%	5%	5%	14%	5%
grade 1 events	52	54	50	121	56
	0%	0%	0%	0%	0%
grade 2 events	2969	2869	2865	4035	2655
	2%	2%	2%	3%	2%
grade 3 events	1405	1492	1305	1755	1295
	1%	1%	1%	1%	1%
grade 4 events	1272	1436	1266	1762	1278
	1%	1%	1%	1%	1%
grade 5 events	4109	4262	3788	4256	4618
	3%	3%	3%	3%	3%
grade 6 events	2472	2723	2295	2661	2624
	2%	2%	2%	2%	2%
grade 7 events	92129	89184	96146	95106	97493
	83%	82%	84%	73%	84%

2.2 Compared Parameters

Parameter	Planned	Actual	Parameter	Planned	Actual
Instrument	ACIS	ACIS	Obspar format version number	6	6
Detector	ACIS-01236	ACIS-01236	Obspar file type	PREDICTED	ACTUAL
Grating	NONE	NONE	Obspar update status	NONE	UPDATED
Data mode	VFAINT	VFAINT	Number of optional ACIS chips dropped	0	0
Observation mode	POINTING	POINTING	On-chip summing requested	N	N
Pointing RA	42.035397	42.06276117779905	Subarray requested	NONE	NONE
Pointing Dec	-3.554254	-3.550867717280323	Alternating exposures requested	N	N
Pointing Roll	336.991655	337.2020412340923	Primary exposure time	3.200000	3.2
SIM focus pos (mm)	-0.782348	-0.7809083437167272			
SIM defocus (mm)	0	0.001439871863259334			
SIM translation stage pos (mm)	-225.840463	-225.8433433320239			
SIM translation stage offset (mm)	-7.752	-7.749109670905796			
Observation start time	90747597.184000	90746618.200372			
Observation start date	2000-11-16T07:38:53	2000-11-16T07:23:38			
Observation end time	90767247.184000	90768039.16369			
Observation end date	2000-11-16T13:06:23	2000-11-16T13:20:39			
Read mode	TIMED	TIMED			

2.3 Aspect



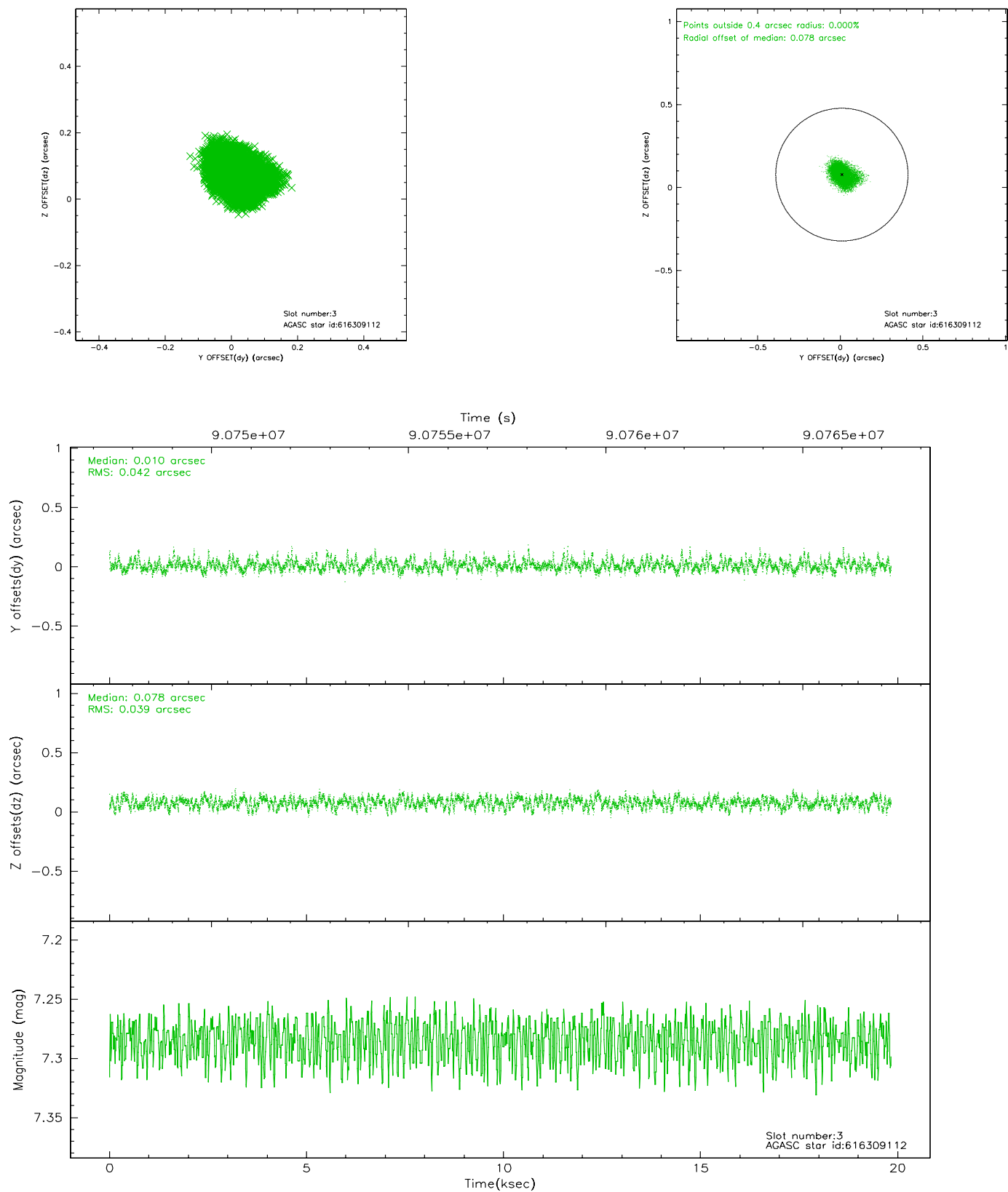


Slot Statistics

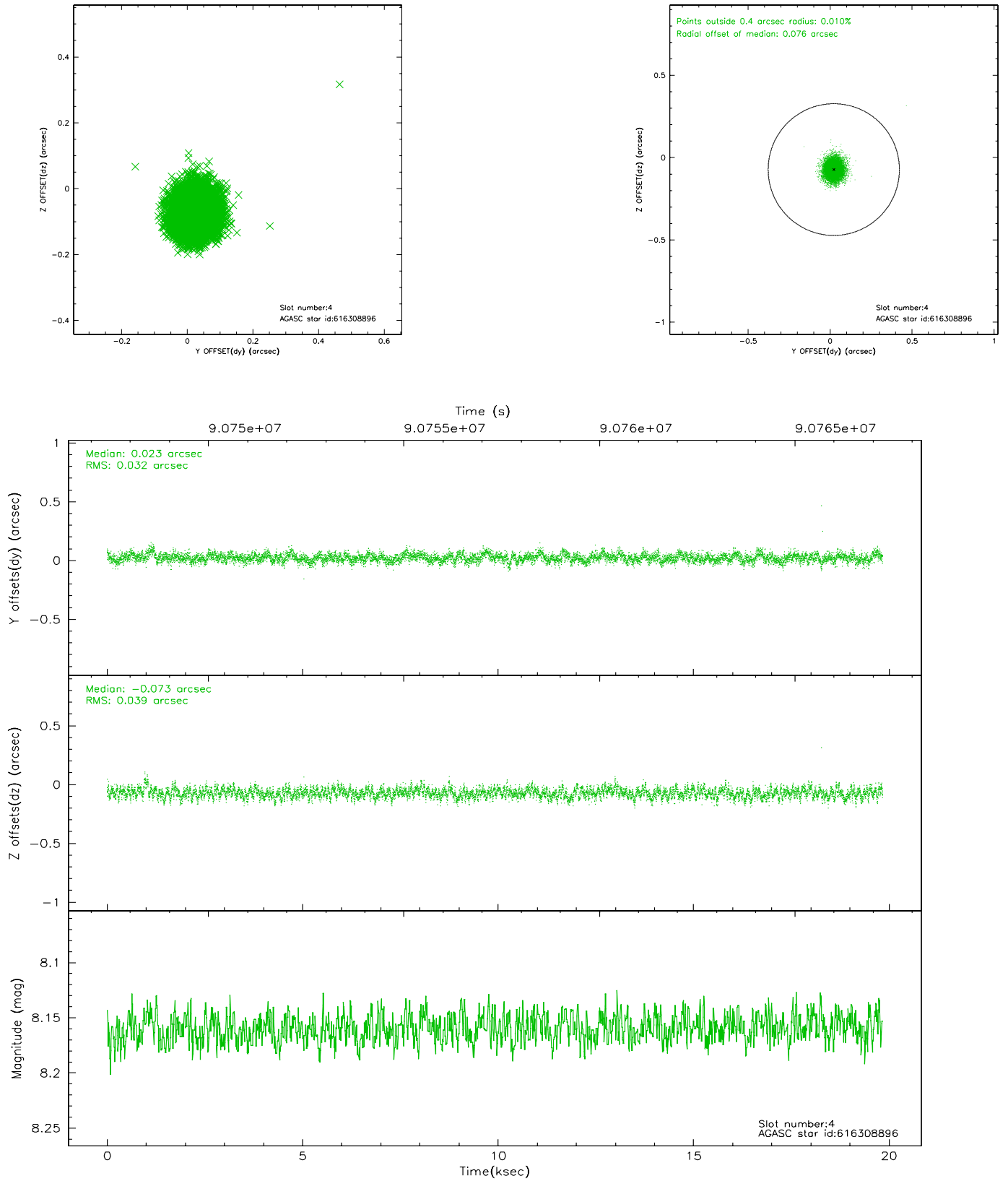
slot	status	id	mag	n_pts	med_dy	med_dz	dr1	dr2	ra	dec	mean_y	mean_z
0	FID	ACIS-I-2	7.18	4838	-0.039	-0.009	0.012	0.018	0.000000	0.000000	-756.99	-993.85
1	FID	ACIS-I-4	7.15	4837	-0.085	0.033	0.008	0.013	0.000000	0.000000	2156.89	912.19
2	FID	ACIS-I-5	7.22	4838	0.024	0.044	0.009	0.015	0.000000	0.000000	-1810.11	909.28
3	GUIDE	616309112	7.28	9678	0.010	0.078	0.061	0.099	42.055014	-3.619210	155.31	-187.38
4	GUIDE	616308896	8.16	9673	0.023	-0.073	0.053	0.086	42.427748	-3.548145	1288.10	571.24
5	GUIDE	616309048	8.82	9671	0.019	-0.009	0.062	0.100	41.784403	-3.226459	-1292.52	733.64
6	GUIDE	616302872	8.25	9676	-0.082	0.003	0.062	0.098	41.855710	-3.296822	-957.92	600.77
7	GUIDE	616306616	8.91	9675	0.029	0.003	0.064	0.103	42.263219	-4.097260	1516.19	-1479.34

2.4 Star Slots

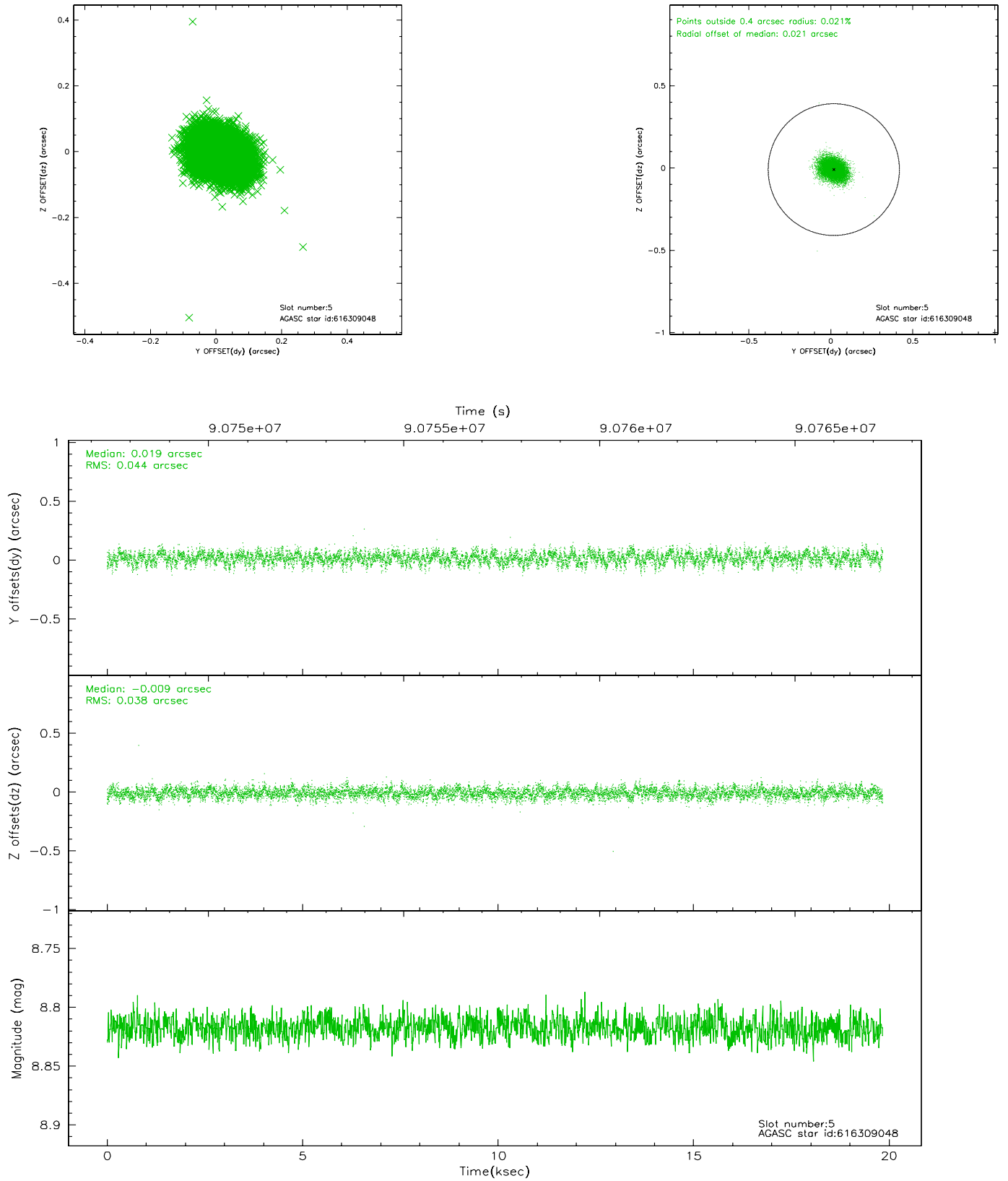
2.4.1 Slot 3



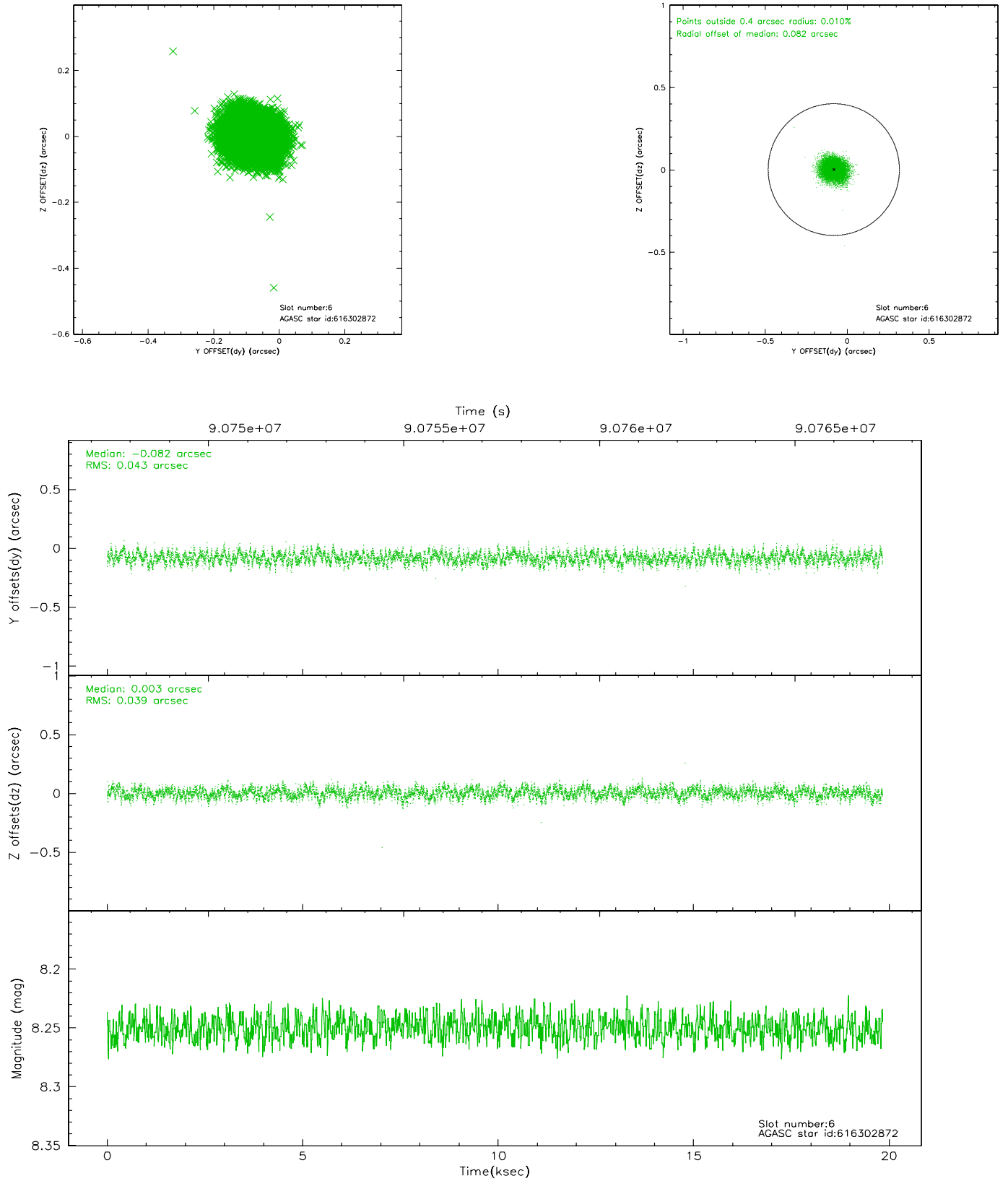
2.4.2 Slot 4



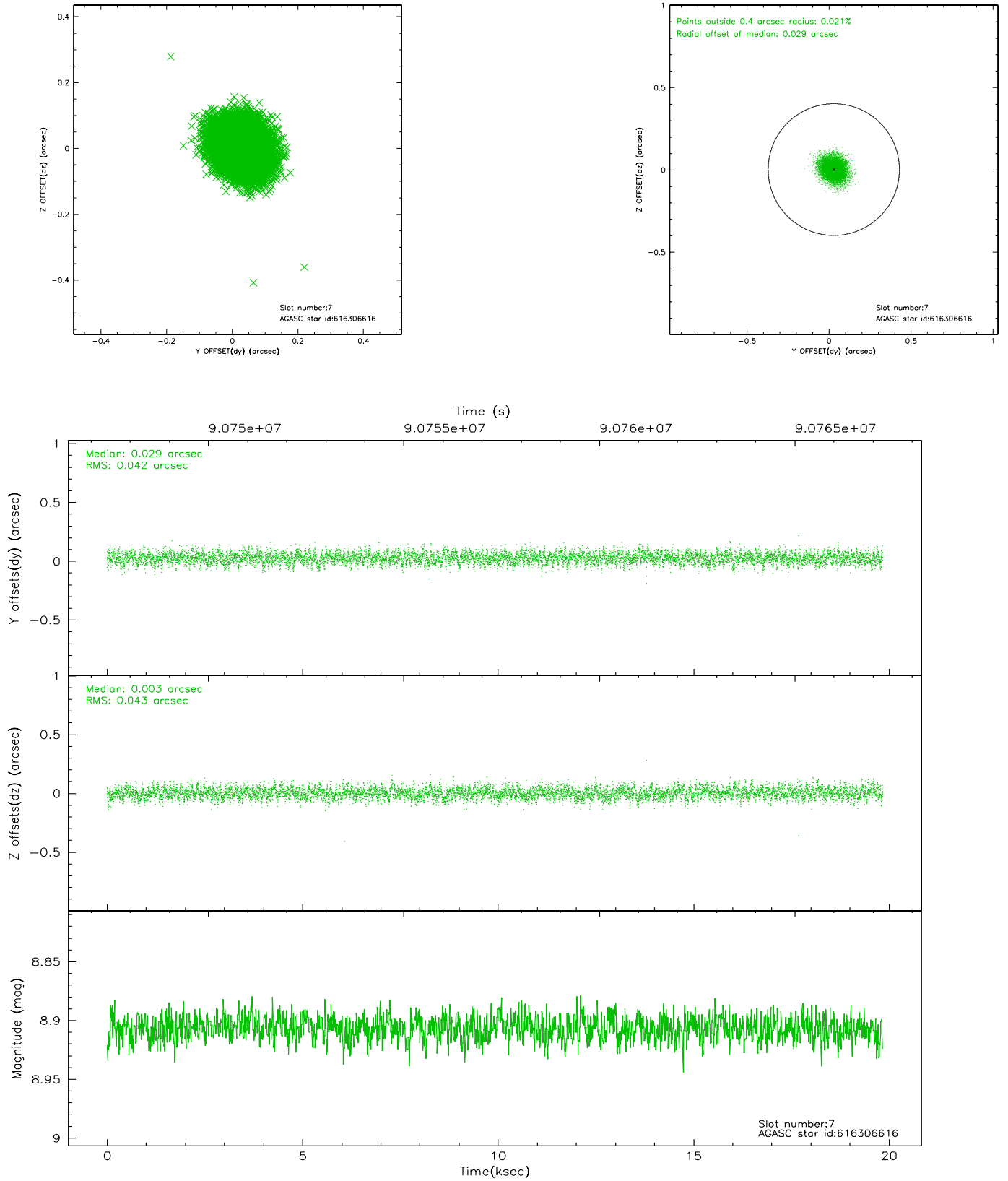
2.4.3 Slot 5



2.4.4 Slot 6

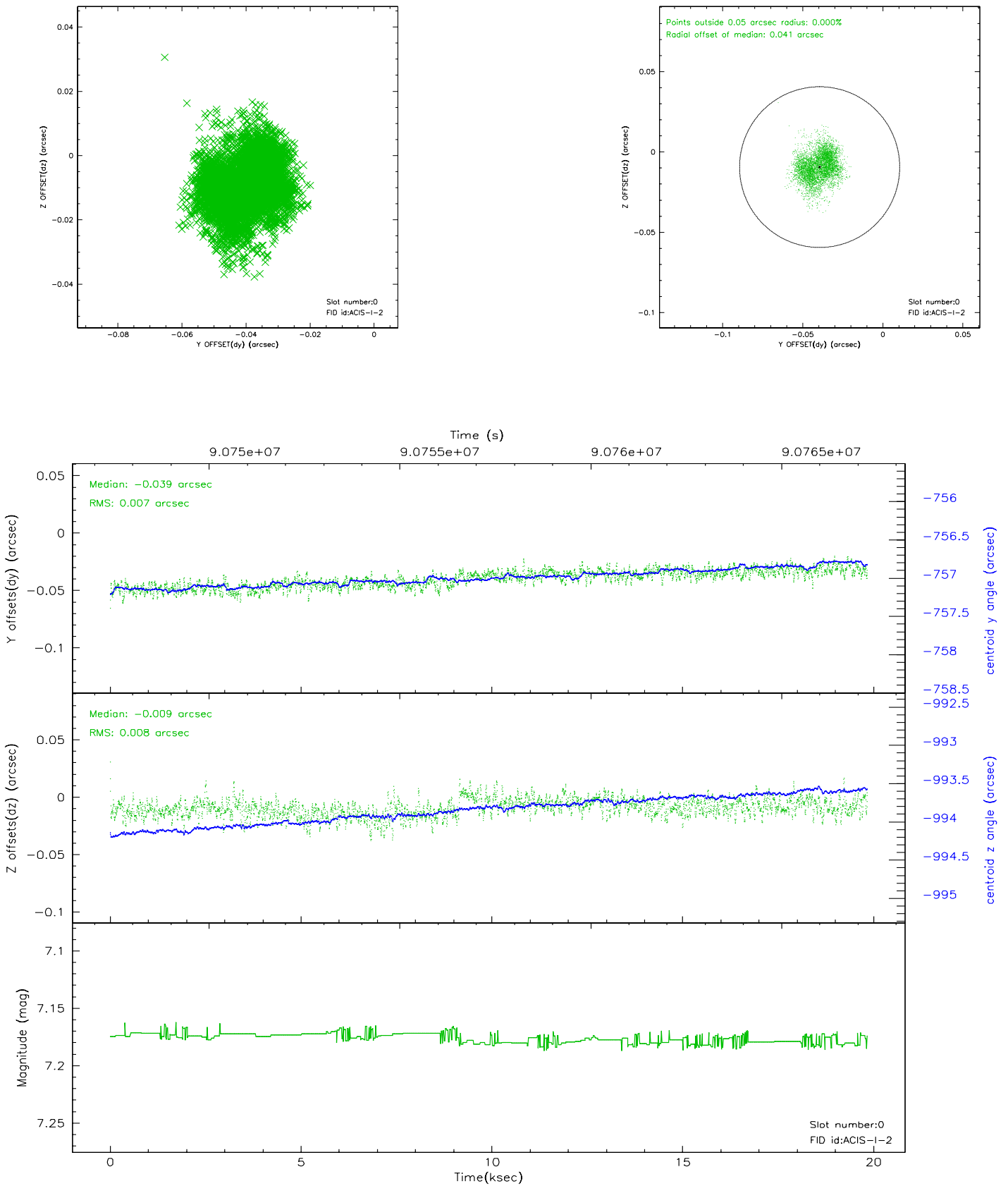


2.4.5 Slot 7

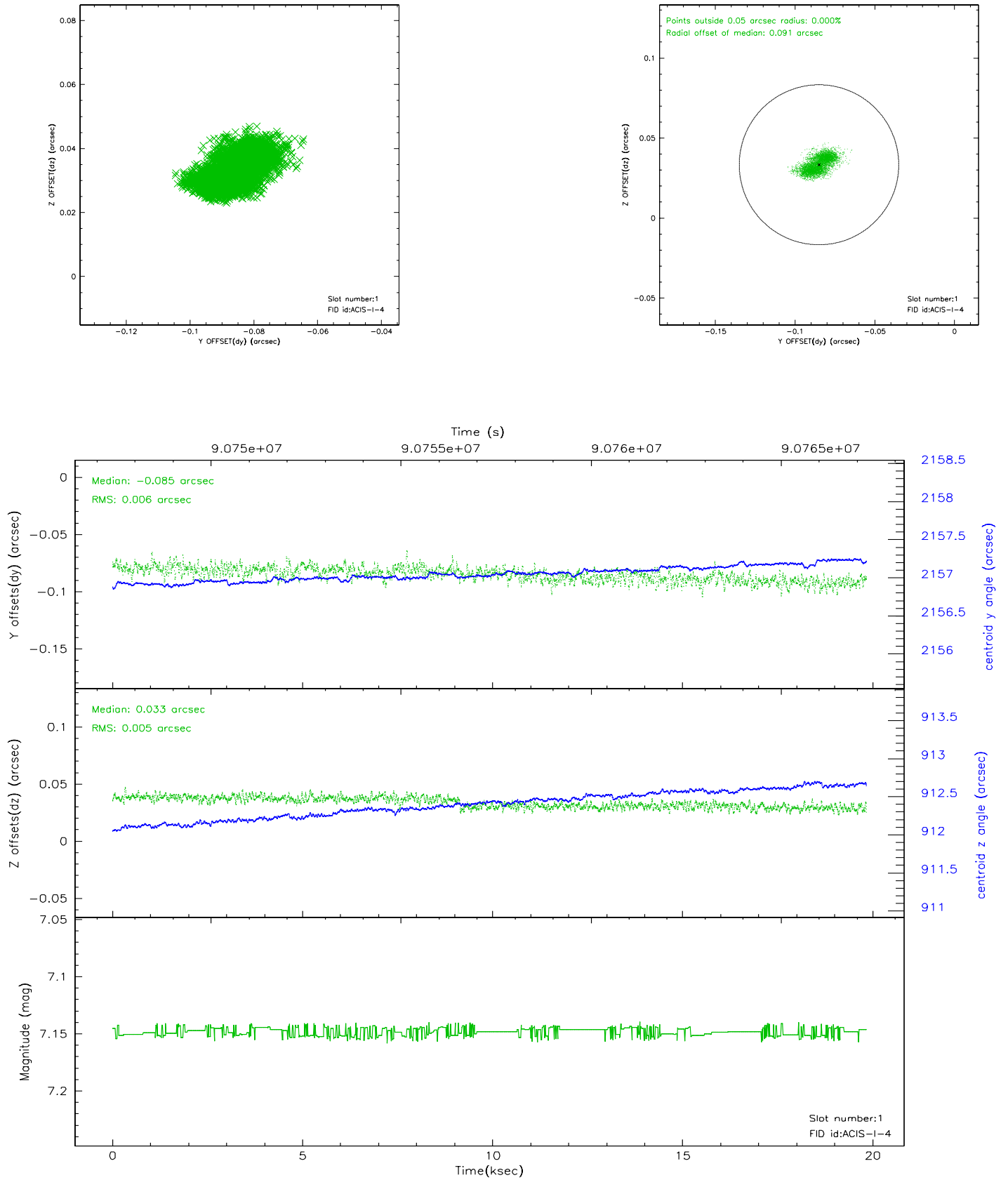


2.5 FID Slots

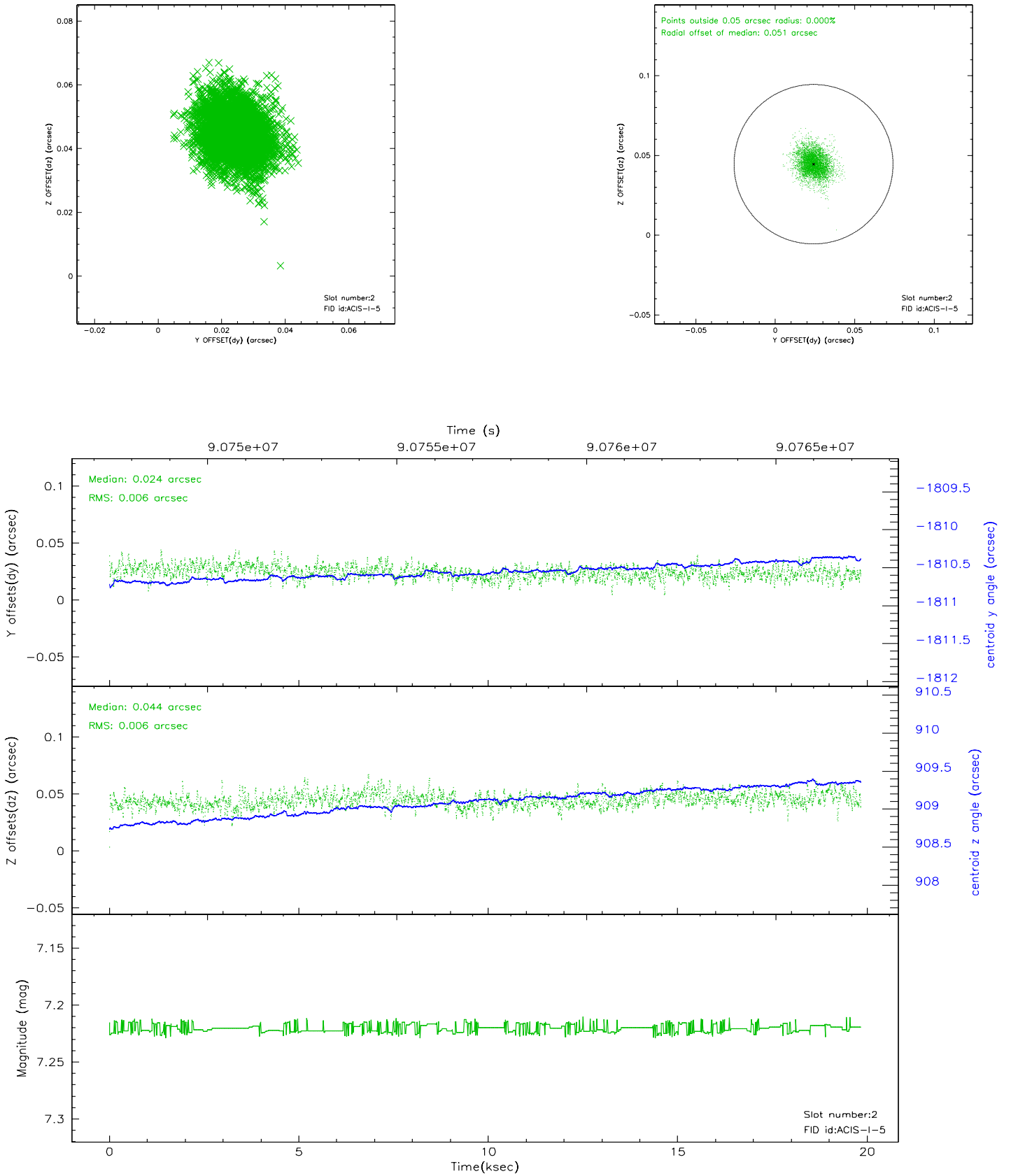
2.5.1 Slot 0



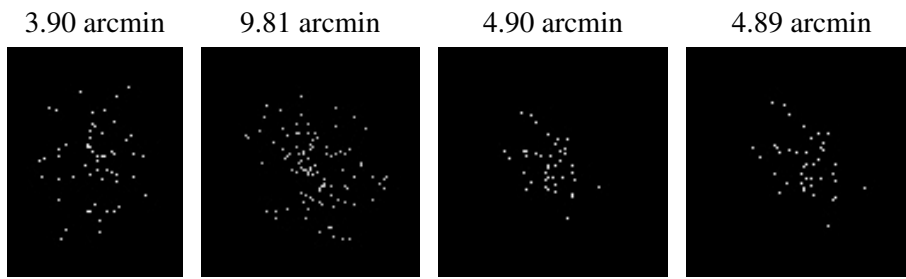
2.5.2 Slot 1



2.5.3 Slot 2



3 Point Sources



A Summary

A.1 Status

V&V Scientist	Jen Lauer
V&V Date (YYYY-MM-DD)	2007.06.18
V&V Edition	1
V&V Disposition and Status	OK
V&V Charge Time	19.532

A.2 Comments