

V&V Reference Report

L2 ASCDS Version : 8.4.5

Observation 841 - L2 Version 4
Chandra X-Ray Center

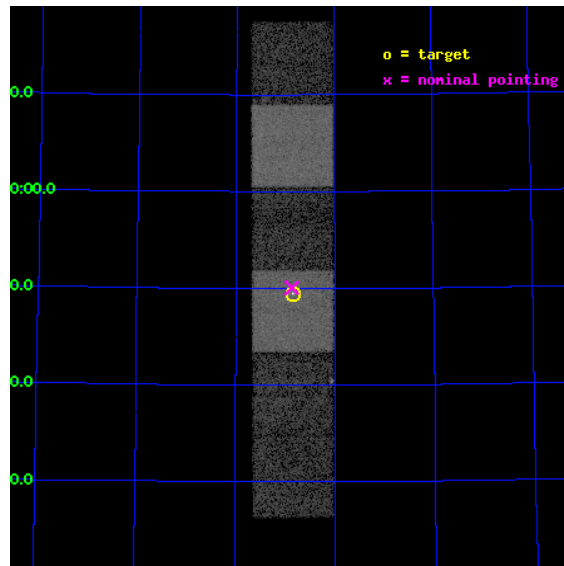
L2 Processing Date : Aug 24 2012

Contents

1	Front	2
2	OBI	3
2.1	OBI	3
2.1.1	Images	3
2.1.2	Bias	3
2.1.3	Parameters	4
2.1.4	Events	4
2.2	Compared Parameters	5
2.3	Aspect	6
2.4	Star Slots	9
2.4.1	Slot 3	9
2.4.2	Slot 4	10
2.4.3	Slot 5	11
2.4.4	Slot 6	12
2.4.5	Slot 7	13
2.5	FID Slots	14
2.5.1	Slot 0	14
2.5.2	Slot 1	15
2.5.3	Slot 2	16
A	Summary	17
A.1	Status	17
A.2	Comments	17

1 Front

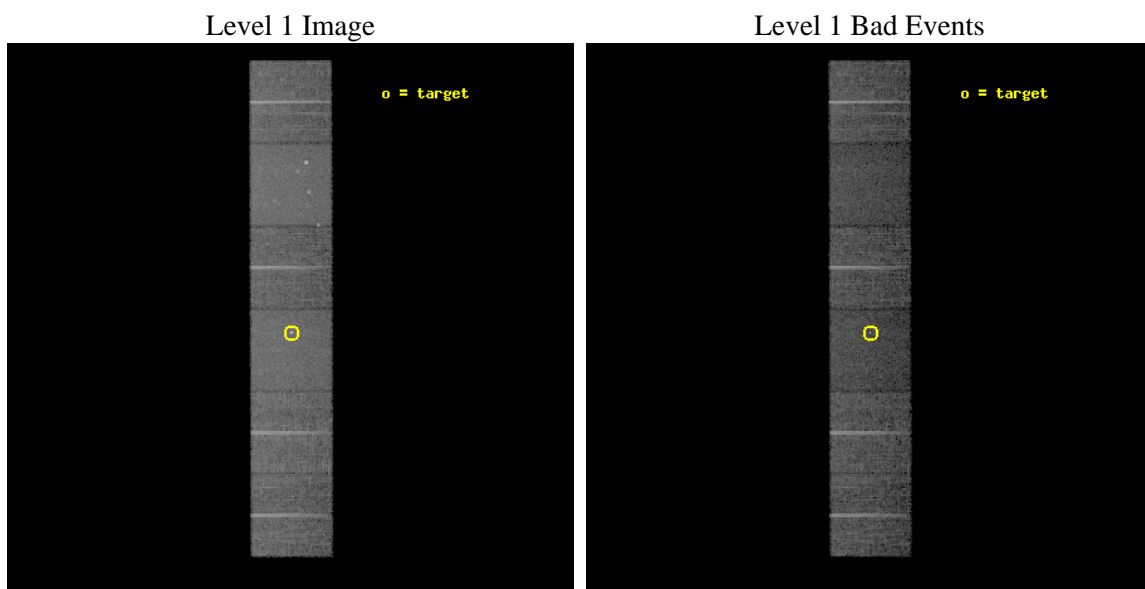
seq_num	700146	Sequence number
obs_id	841	Observation id
title	THE X-RAY CLUSTER ENVIRONMENT OF BLAZARS	Proposal title
observer	Dr. Joseph Pesce	Principal investigator
object	3C 371	Source name
dtcycle	0	
cycle	P	events from which exps? Prim/Second/Both
ra_targ	271.710833	Observer's specified target RA [deg]
dec_targ	69.824472	Observer's specified target Dec [deg]
ra_nom	271.71637945132	Nominal RA [deg]
dec_nom	69.834350909114	Nominal Dec [deg]
roll_nom	89.831215716119	Nominal Roll [deg]
revision	4	Processing version of data
ontime	10248.426534116	Sum of GTIs [s]
livetime	10118.65478648	Livetime [s]
ontime4	10248.46757412	Sum of GTIs [s]
ontime5	10248.385494113	Sum of GTIs [s]
ontime6	10248.344454125	Sum of GTIs [s]
ontime7	10248.426534116	Sum of GTIs [s]
ontime8	10248.303414121	Sum of GTIs [s]
ontime9	10248.262374118	Sum of GTIs [s]
l2events	110196	Number of level 2 events



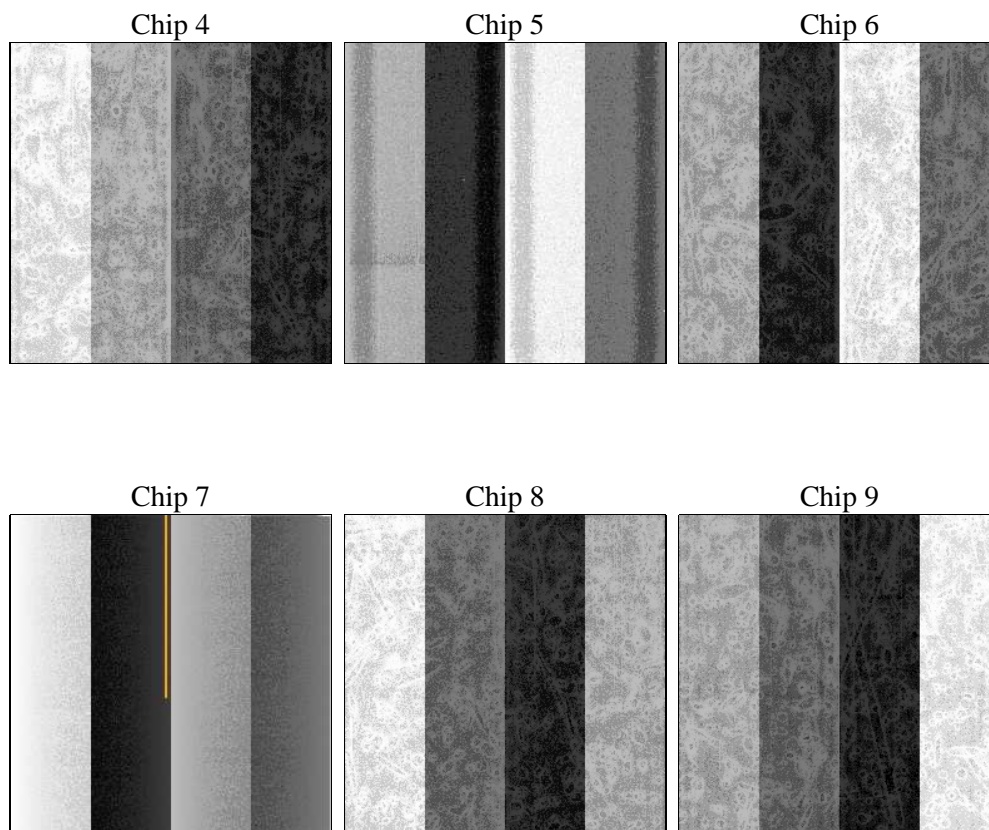
2 OBI

2.1 OBI

2.1.1 Images



2.1.2 Bias



2.1.3 Parameters

obi_num	0	Obi number	sched_exp_time	10000.000000	[s] Scheduled observation exposure time
ascdsver	8.4.5	Processing system revision	ontime	10248.426534116	Sum of GTIs [s]
caldsver	4.5.1.1	 	ontime4	10248.46757412	Sum of GTIs [s]
date	2012-08-24T13:46:57	Date and time of file creation	ontime5	10248.385494113	Sum of GTIs [s]
revision	4	Processing version of data	ontime6	10248.344454125	Sum of GTIs [s]
			ontime7	10248.426534116	Sum of GTIs [s]
			ontime8	10248.303414121	Sum of GTIs [s]
			ontime9	10248.262374118	Sum of GTIs [s]
			l1events	512118	Number of level 1 events

2.1.4 Events

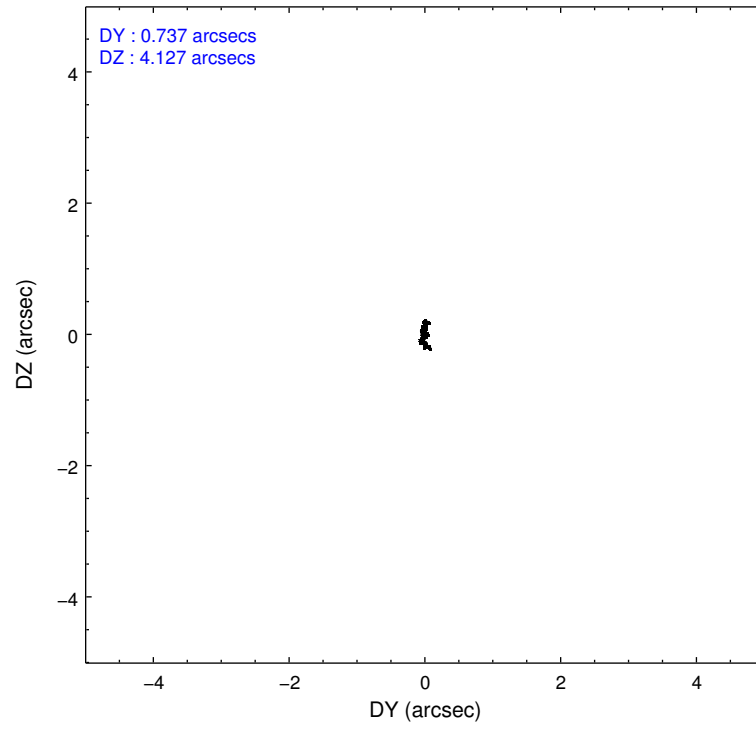
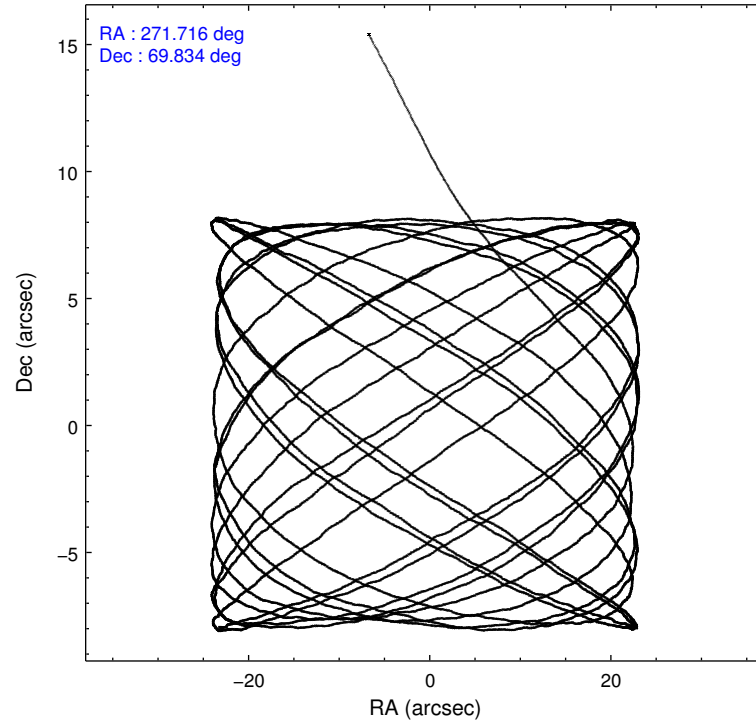
	ccd 4	ccd 5	ccd 6	ccd 7	ccd 8	ccd 9		ccd 4	ccd 5	ccd 6	ccd 7	ccd 8	ccd 9
level 1 events	82022	95834	75477	92198	91629	74958	grade 0 events	3646	5329	3299	4855	5476	3369
rejected events	73531	50860	67451	51189	74750	66974		4%	5%	4%	5%	5%	4%
rejected %	89%	53%	89%	55%	81%	89%	grade 1 events	34	167	30	193	53	35
								0%	0%	0%	0%	0%	0%
							grade 2 events	1905	12833	1586	8203	3647	1508
								2%	13%	2%	8%	3%	2%
							grade 3 events	753	2103	865	3869	1916	825
								0%	2%	1%	4%	2%	1%
							grade 4 events	779	1974	800	3766	1734	763
								0%	2%	1%	4%	1%	1%
							grade 5 events	2297	7528	2777	8960	3554	2833
								2%	7%	3%	9%	3%	3%
							grade 6 events	1416	22770	1484	20339	4116	1521
								1%	23%	1%	22%	4%	2%
							grade 7 events	71192	43130	64636	42013	71133	64104
								86%	45%	85%	45%	77%	85%

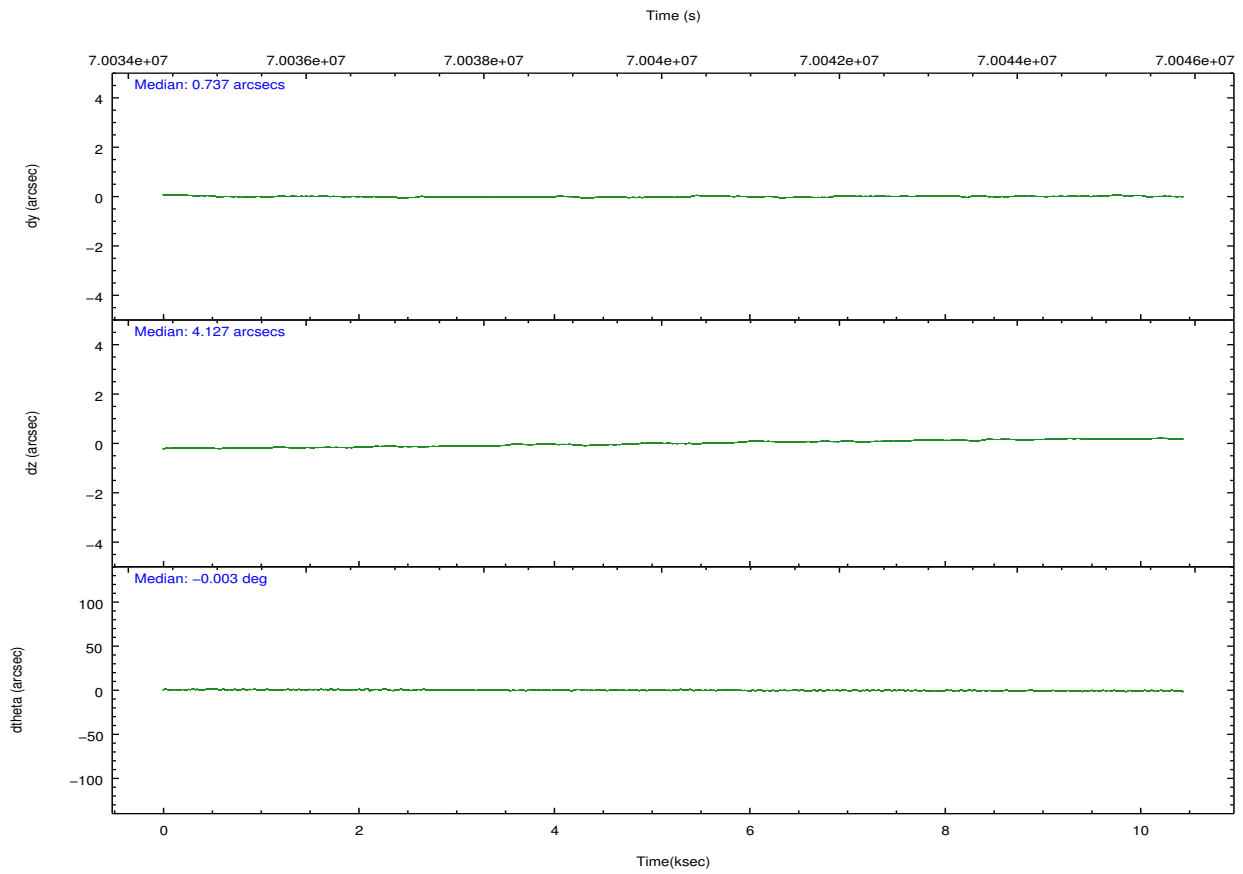
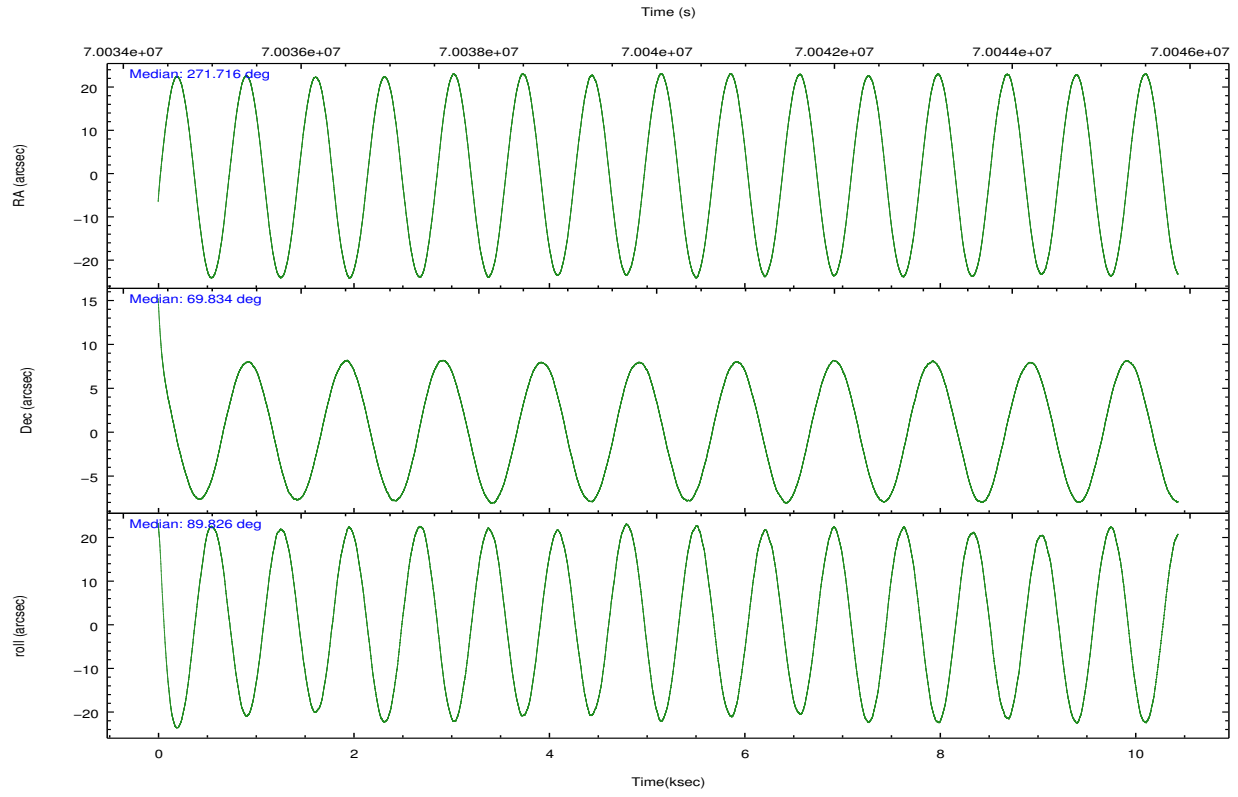
2.2 Compared Parameters

Parameter	Planned	Actual
Instrument	ACIS	ACIS
Detector	ACIS-456789	ACIS-456789
Grating	NONE	NONE
Data mode	FAINT	FAINT
Observation mode	POINTING	POINTING
[deg] Pointing RA	271.755994	271.7163794513173
[deg] Pointing Dec	69.810537	69.83435090911425
[deg] Pointing Roll	89.637381	89.83121571611946
[mm] SIM focus pos	-0.684267	-0.6828225247311905
[mm] SIM defocus	0	0.001444936568705701
[mm] SIM translation stage pos	-190.132523	-190.1425803651734
[mm] SIM translation stage offset	0	0.01005778216563158
[s] Observation start time (MET)	70035345.184000	70034086.75538801
Observation start date	2000-03-21T14:14:41	2000-03-21T13:54:46
[s] Observation end time (MET)	70045345.184000	70045951.64332201
Observation end date	2000-03-21T17:01:21	2000-03-21T17:12:31
Read mode	TIMED	TIMED

Parameter	Planned	Actual
Obspar format version number	7	7
Obspar file type	PREDICTED	ACTUAL
Obspar update status	NONE	UPDATED
Number of optional ACIS chips dropped	0	0
On-chip summing requested	N	N
Subarray requested	NONE	NONE
Alternating exposures requested	N	N
[s] Primary exposure time	0.000000	3.2

2.3 Aspect



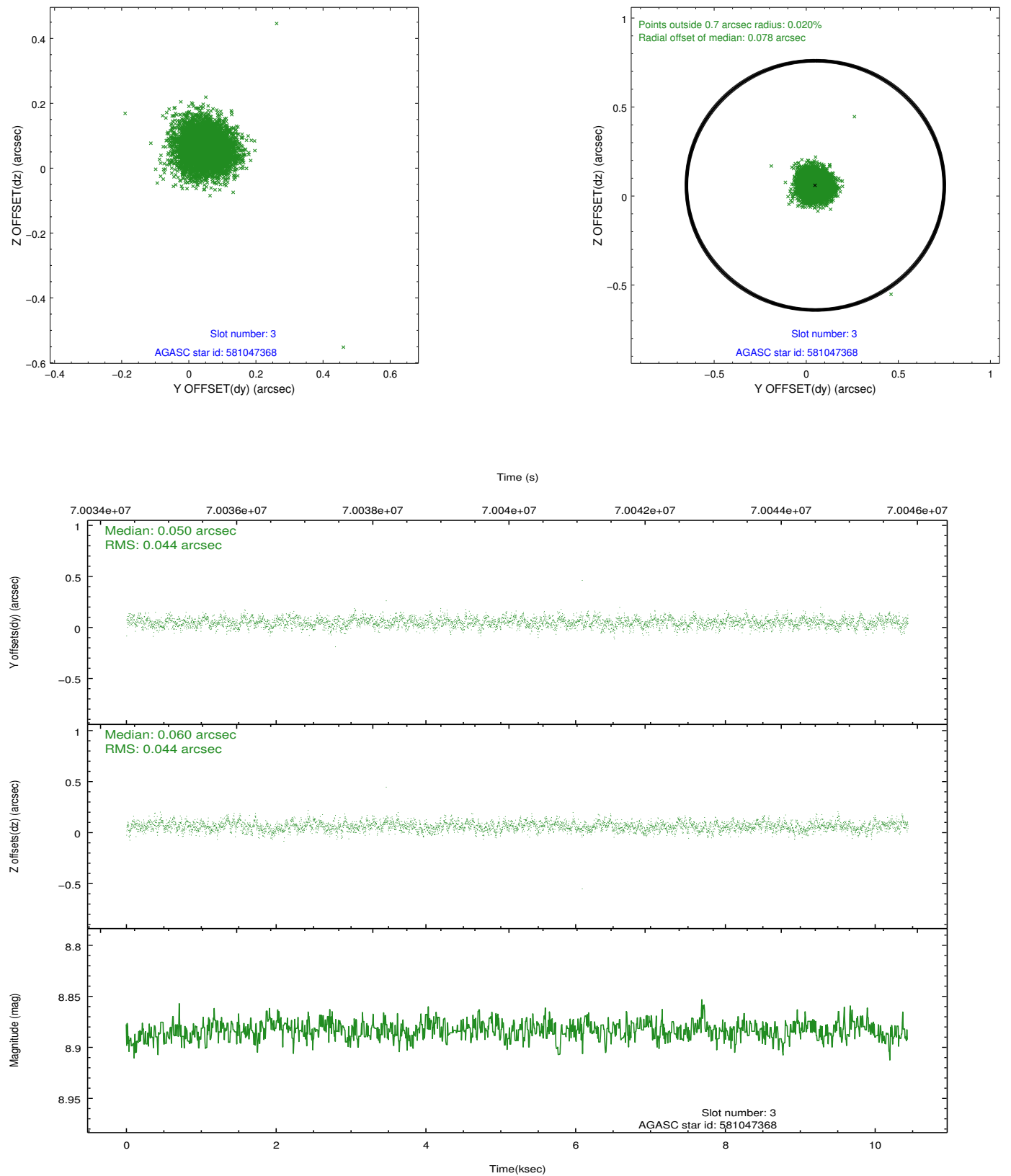


Slot Statistics

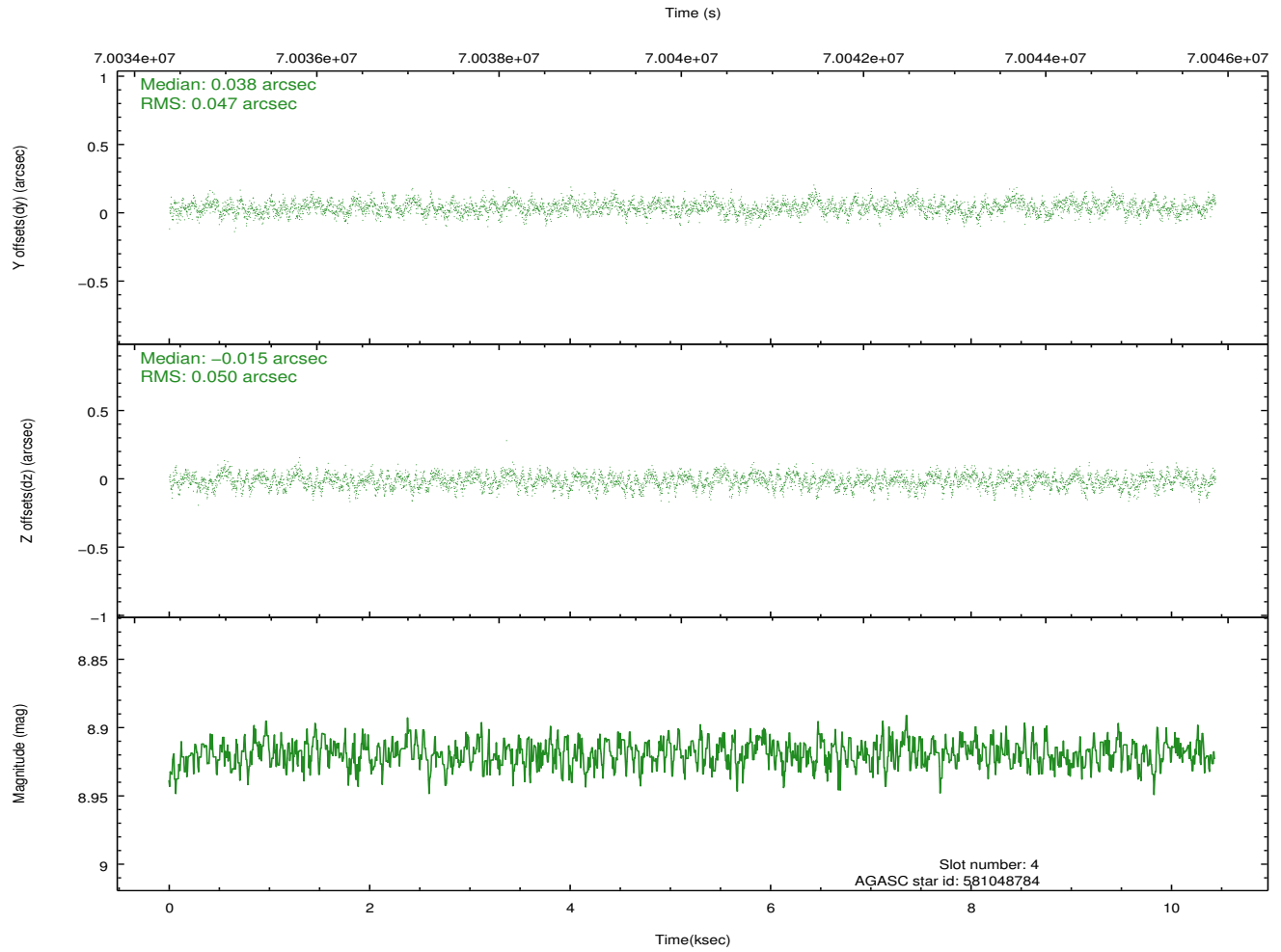
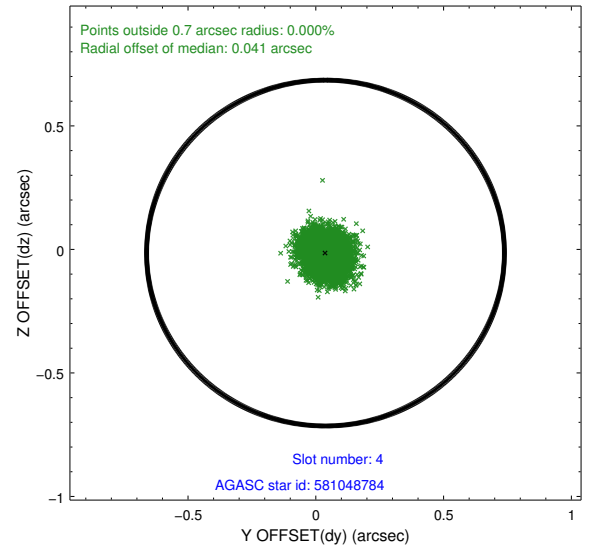
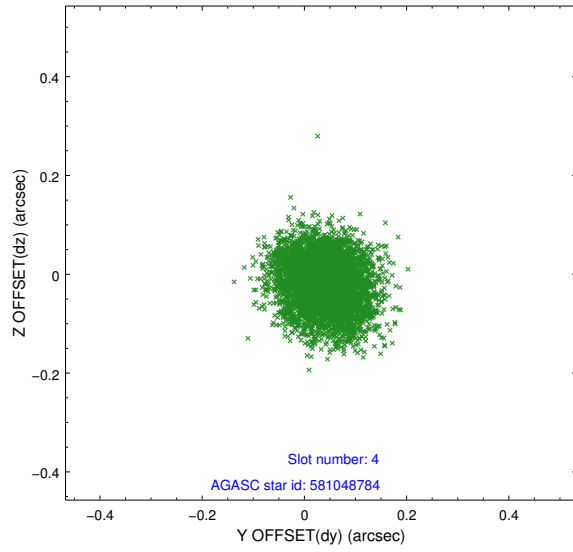
slot	status	id	mag	n_pts	med_dy	med_dz	dr1	dr2	ra	dec	mean_y	mean_z
0	FID	ACIS-S-2	7.11	2546	-0.016	-0.016	0.007	0.012	0.000000	0.000000	-753.36	-1725.16
1	FID	ACIS-S-4	7.21	2546	0.015	0.012	0.006	0.013	0.000000	0.000000	2159.75	182.78
2	FID	ACIS-S-5	7.24	2546	-0.031	0.013	0.006	0.011	0.000000	0.000000	-1805.54	177.09
3	GUIDE	581047368	8.88	5091	0.050	0.060	0.066	0.105	272.000786	69.759465	-181.06	-306.32
4	GUIDE	581048784	8.92	5092	0.038	-0.015	0.073	0.117	273.050937	69.715442	-314.65	-1618.52
5	GUIDE	581049688	9.14	5092	-0.025	-0.043	0.079	0.131	270.210496	70.112394	1098.61	1898.89
6	GUIDE	581046272	8.98	5087	-0.023	-0.020	0.066	0.104	270.458712	70.238027	1545.99	1588.96
7	GUIDE	580533400	9.46	5086	-0.035	0.020	0.085	0.138	273.065937	69.365195	-1574.32	-1671.95

2.4 Star Slots

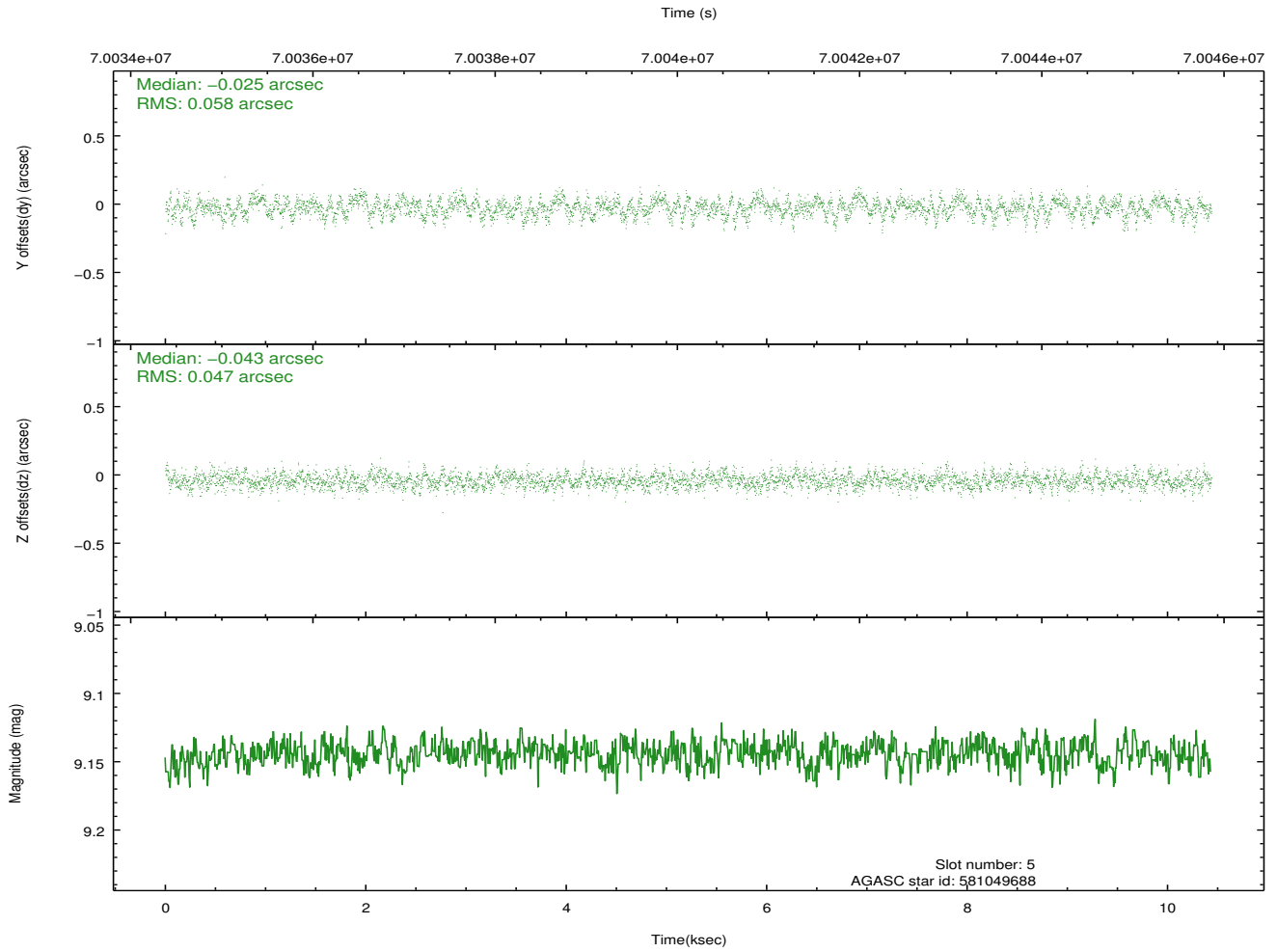
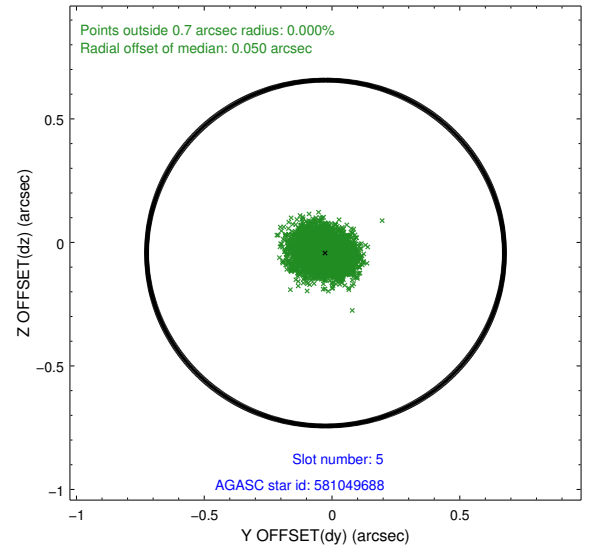
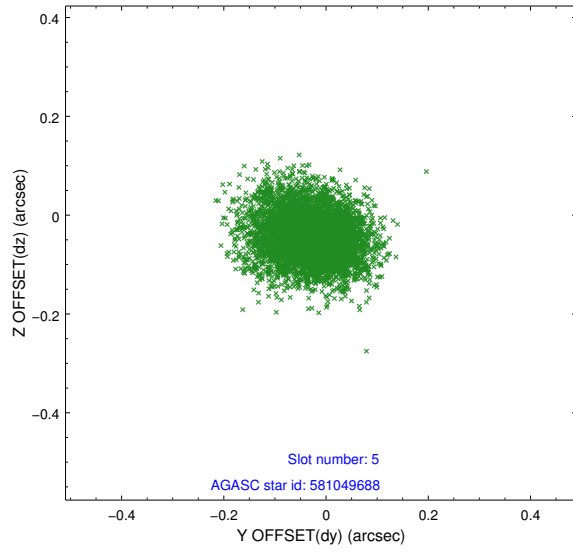
2.4.1 Slot 3



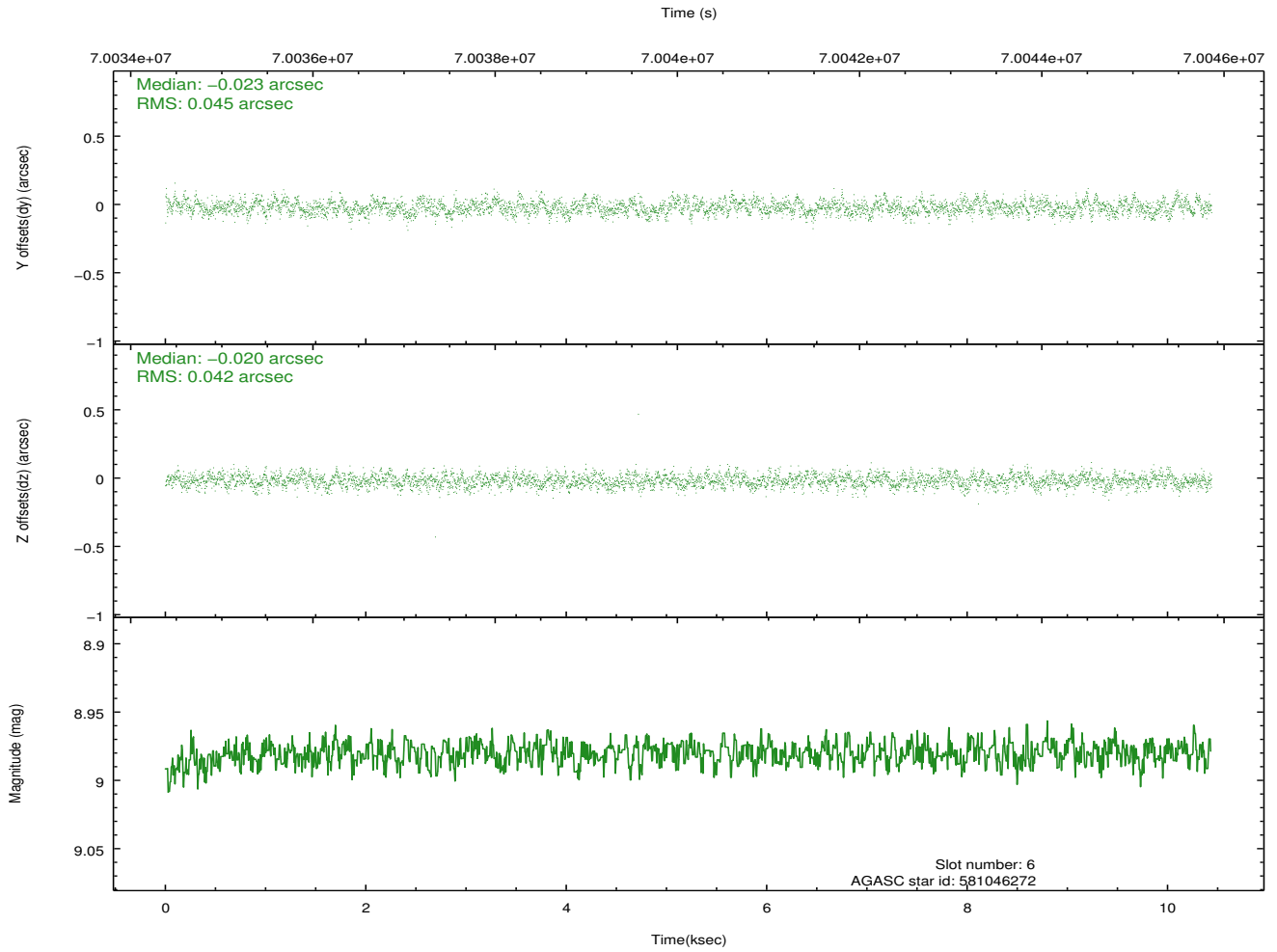
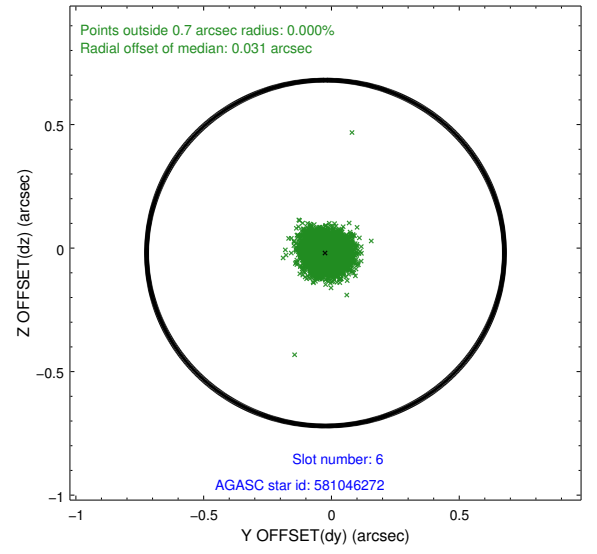
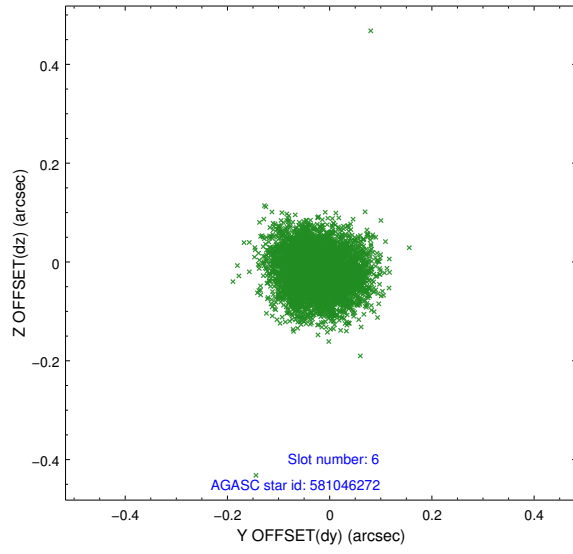
2.4.2 Slot 4



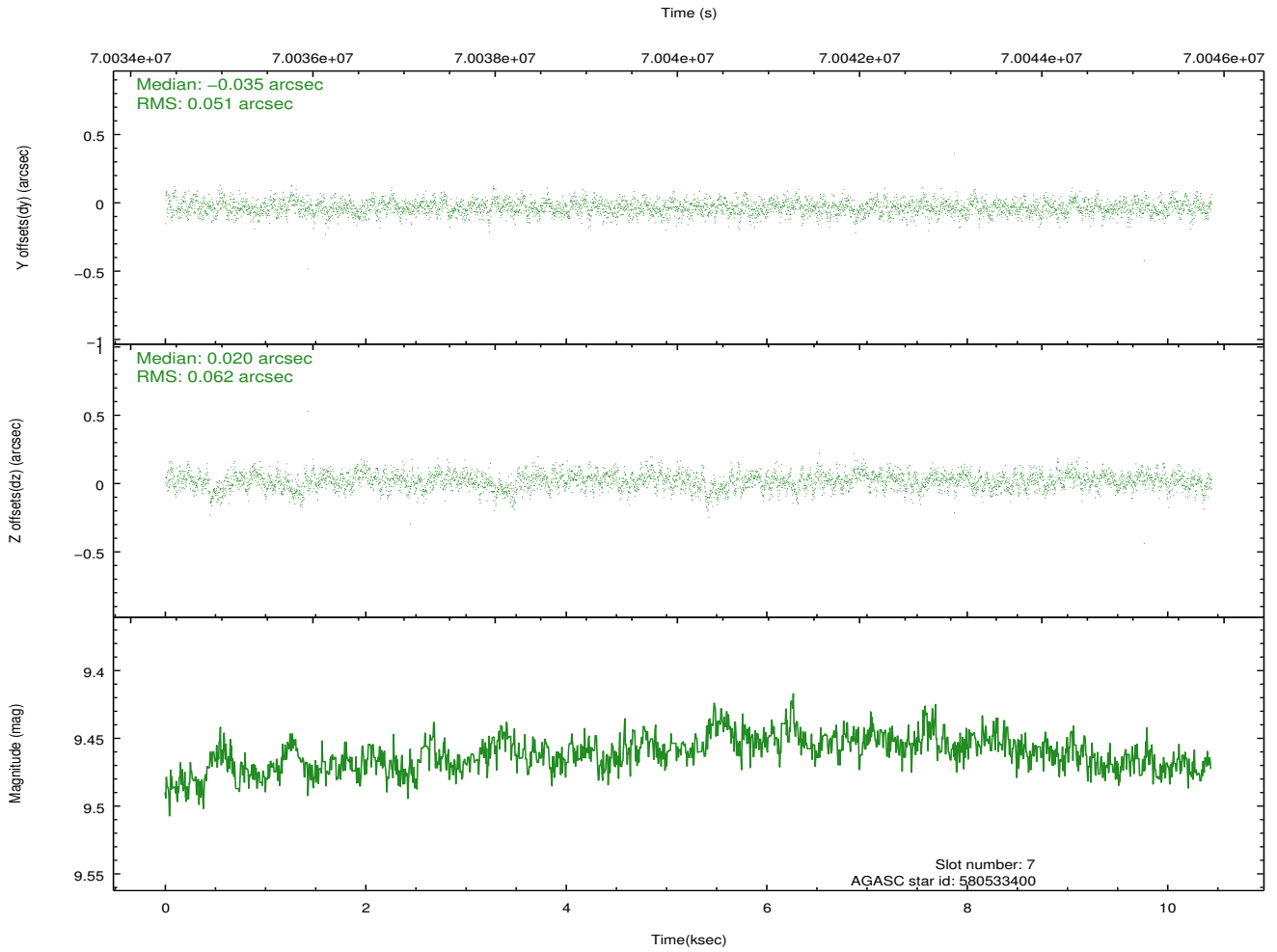
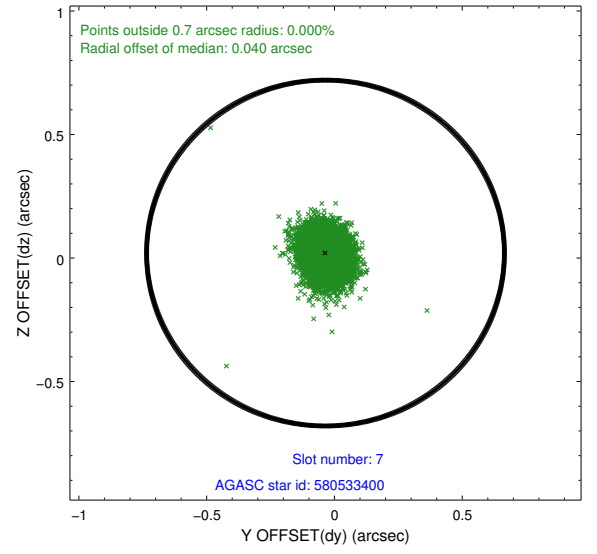
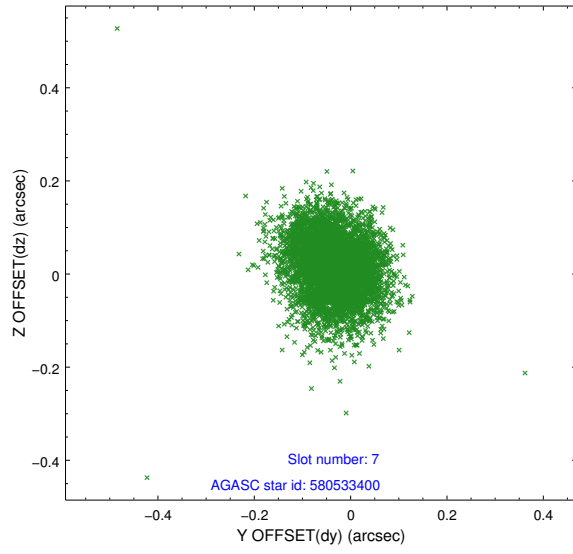
2.4.3 Slot 5



2.4.4 Slot 6

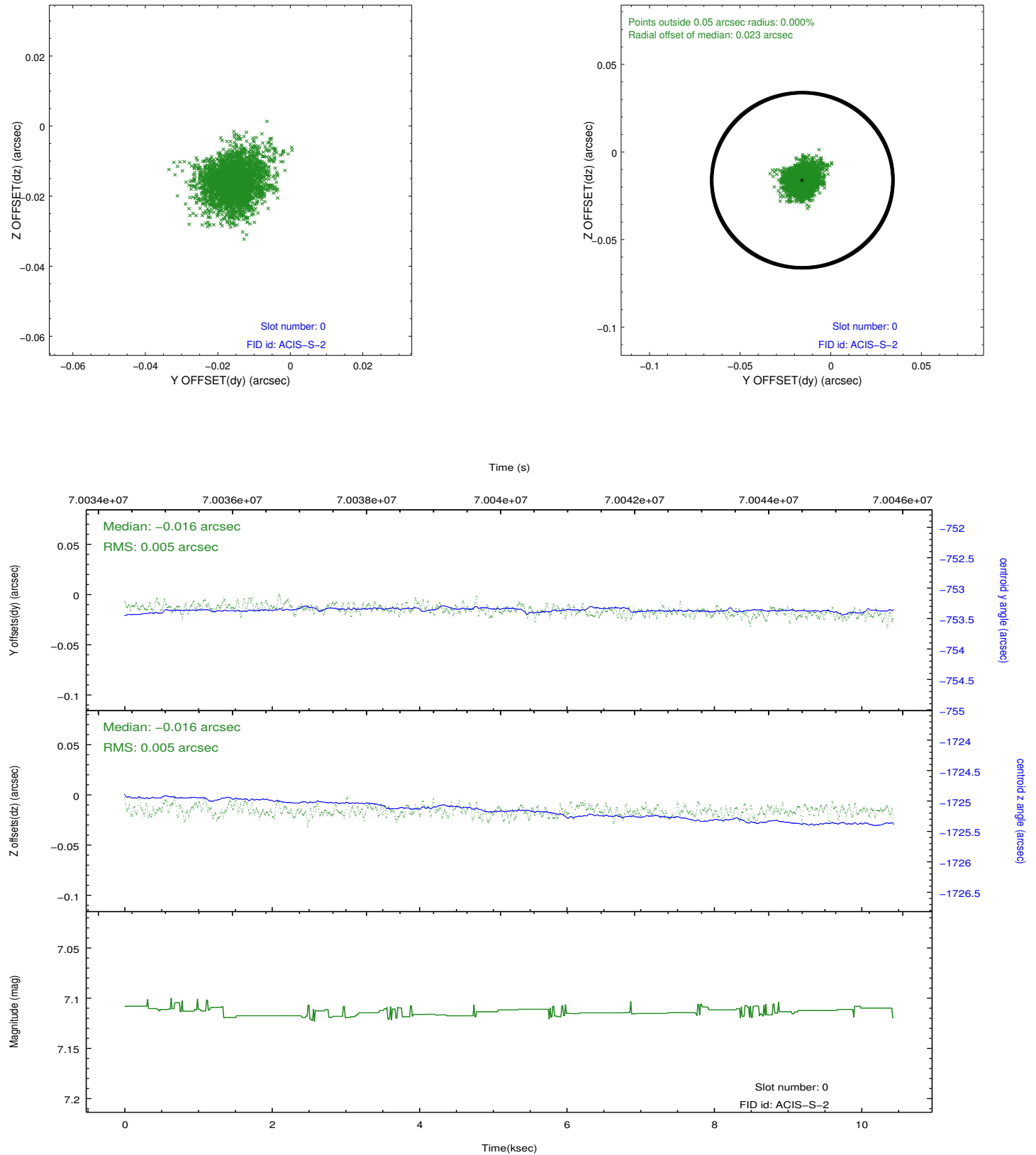


2.4.5 Slot 7

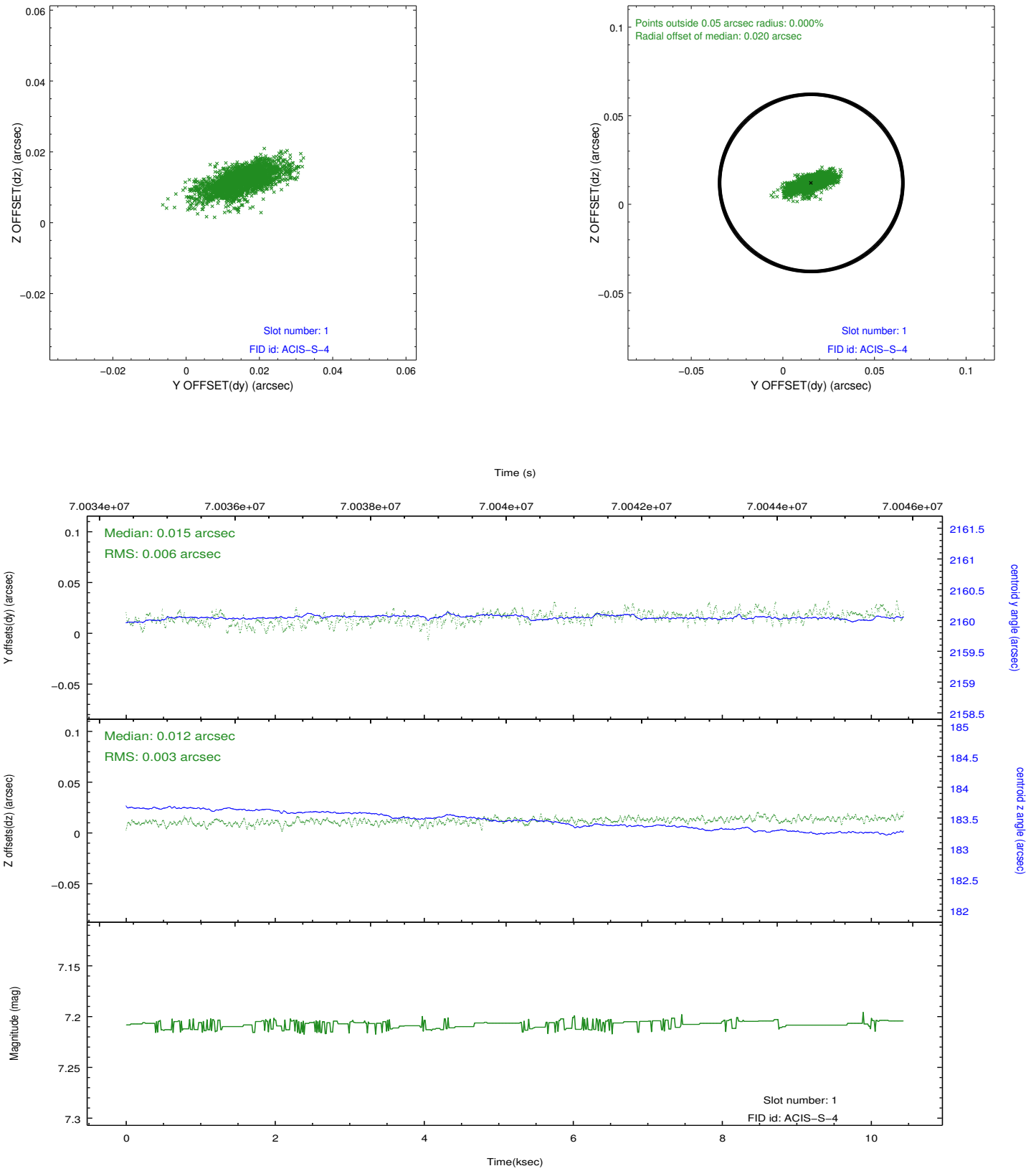


2.5 FID Slots

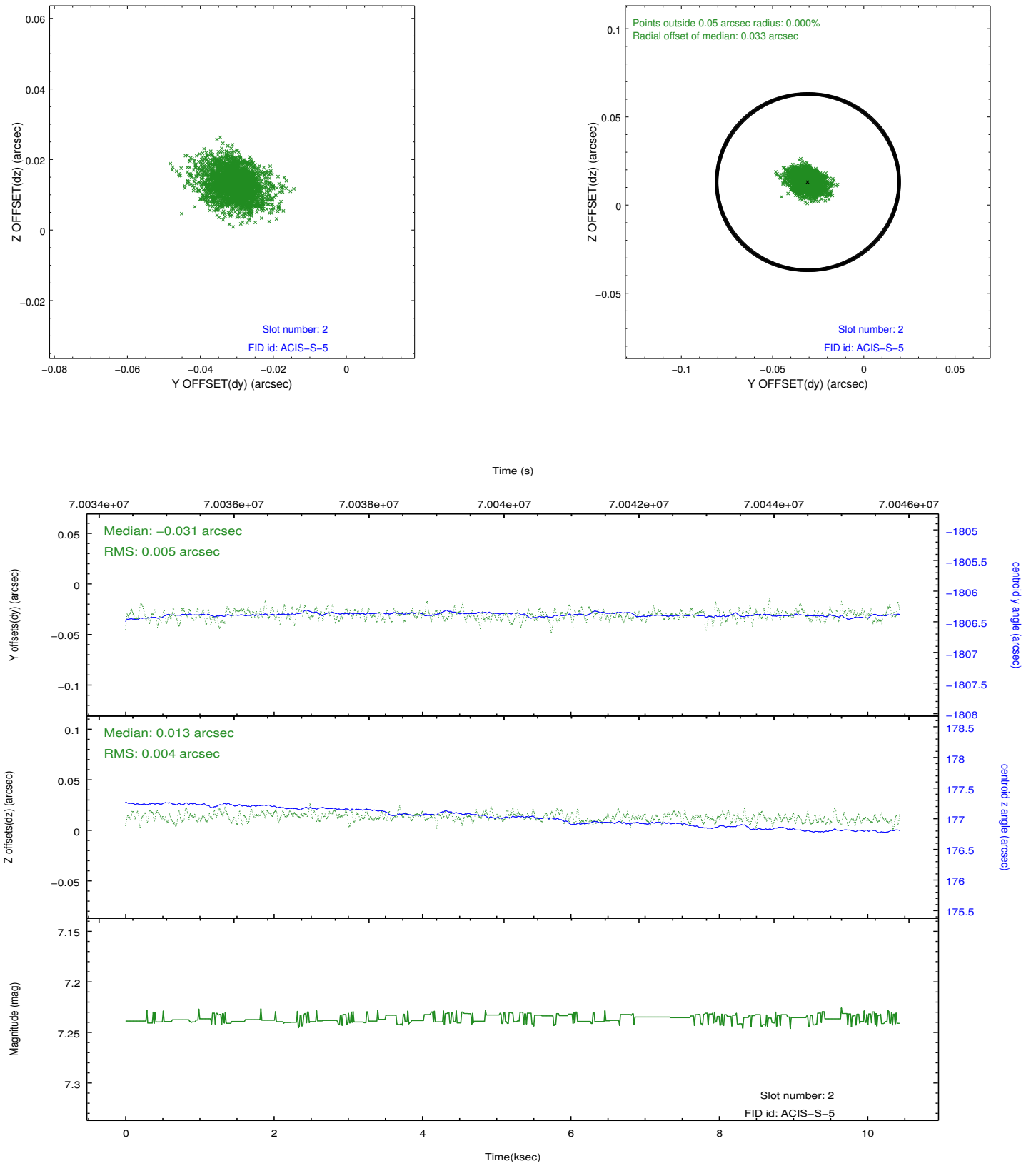
2.5.1 Slot 0



2.5.2 Slot 1



2.5.3 Slot 2



A Summary

A.1 Status

V&V Scientist	Jen Lauer
V&V Date (YYYY-MM-DD)	2012.08.27
V&V Edition	1
V&V Disposition and Status	OK
V&V Charge Time	10.249

A.2 Comments