

V&V Reference Report

L2 ASCDS Version : 8.4.5

Observation 813 - L2 Version 4
Chandra X-Ray Center

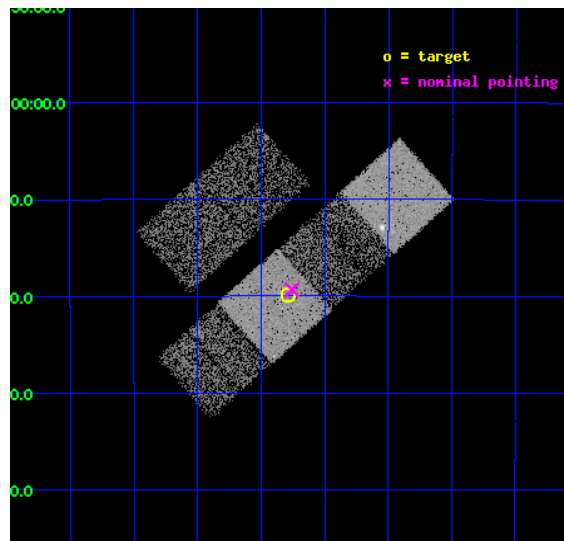
L2 Processing Date : Aug 28 2012

Contents

1	Front	2
2	OBI	3
2.1	OBI	3
2.1.1	Images	3
2.1.2	Bias	3
2.1.3	Parameters	4
2.1.4	Events	4
2.2	Compared Parameters	5
2.3	Aspect	6
2.4	Star Slots	9
2.4.1	Slot 5	9
2.4.2	Slot 7	10
2.5	FID Slots	11
2.5.1	Slot 0	11
2.5.2	Slot 1	12
2.5.3	Slot 2	13
A	Summary	14
A.1	Status	14
A.2	Comments	14

1 Front

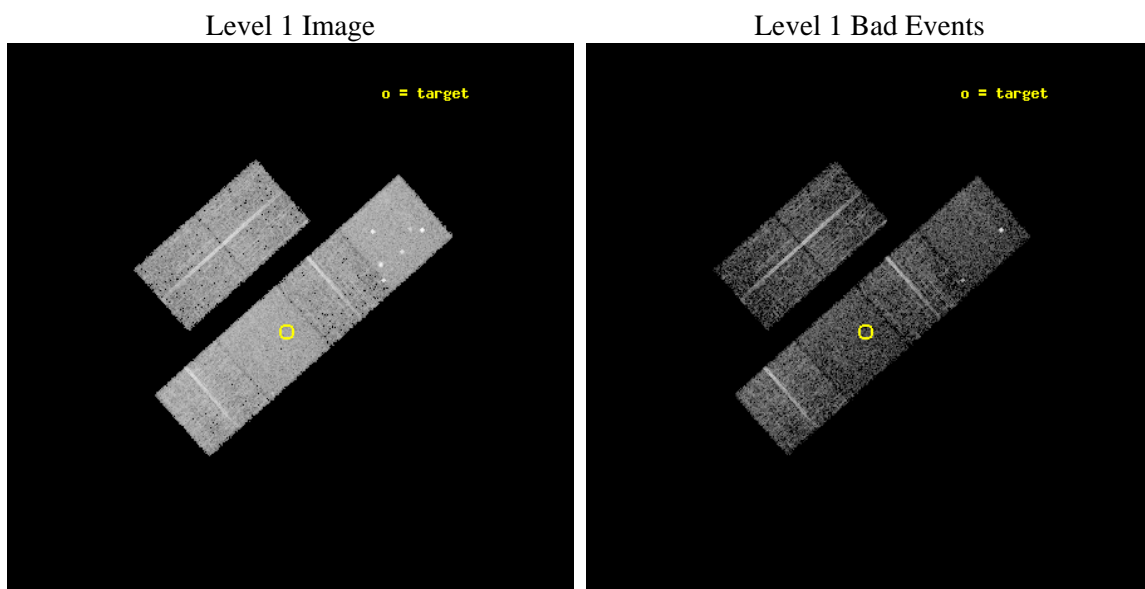
seq_num	700118	Sequence number
obs_id	813	Observation id
title	LIFTING THE SHROUD AROUND BROAD ABSORPTION LINE QSOS: AN AXAF SURVEY	
observer	Dr. Paul Green	Principal investigator
object	Q0059-2735	Source name
dtcycle	0	
cycle	P	events from which exps? Prim/Second/Both
ra_targ	15.57125	Observer's specified target RA [deg]
dec_targ	-27.330528	Observer's specified target Dec [deg]
ra_nom	15.564390922191	Nominal RA [deg]
dec_nom	-27.322578275464	Nominal Dec [deg]
roll_nom	138.23698584271	Nominal Roll [deg]
revision	4	Processing version of data
ontime	4447.9084139019	Sum of GTIs [s]
livetime	4391.5863193562	Livetime [s]
ontime2	4447.9494539052	Sum of GTIs [s]
ontime3	4447.7853238285	Sum of GTIs [s]
ontime5	4447.8674038202	Sum of GTIs [s]
ontime6	4447.8263638318	Sum of GTIs [s]
ontime7	4447.9084139019	Sum of GTIs [s]
ontime8	4444.5033435225	Sum of GTIs [s]
l2events	44597	Number of level 2 events



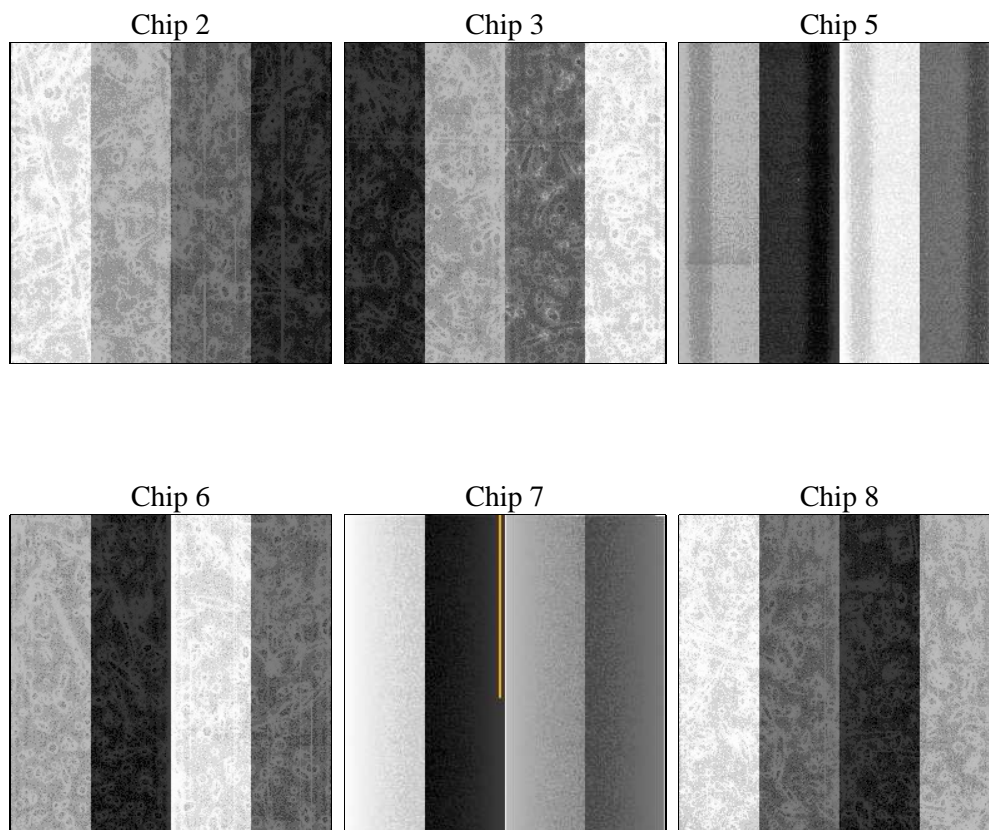
2 OBI

2.1 OBI

2.1.1 Images



2.1.2 Bias



2.1.3 Parameters

obi_num	1	Obi number	sched_exp_time	4800.000000	[s] Scheduled observation exposure time
ascdsver	8.4.5	Processing system revision	ontime	4447.9084139019	Sum of GTIs [s]
caldsver	4.5.1.1	 	ontime2	4447.9494539052	Sum of GTIs [s]
date	2012-08-28T13:04:17	Date and time of file creation	ontime3	4447.7853238285	Sum of GTIs [s]
revision	4	Processing version of data	ontime5	4447.8674038202	Sum of GTIs [s]
			ontime6	4447.8263638318	Sum of GTIs [s]
			ontime7	4447.9084139019	Sum of GTIs [s]
			ontime8	4444.5033435225	Sum of GTIs [s]
			l1events	208816	Number of level 1 events

2.1.4 Events

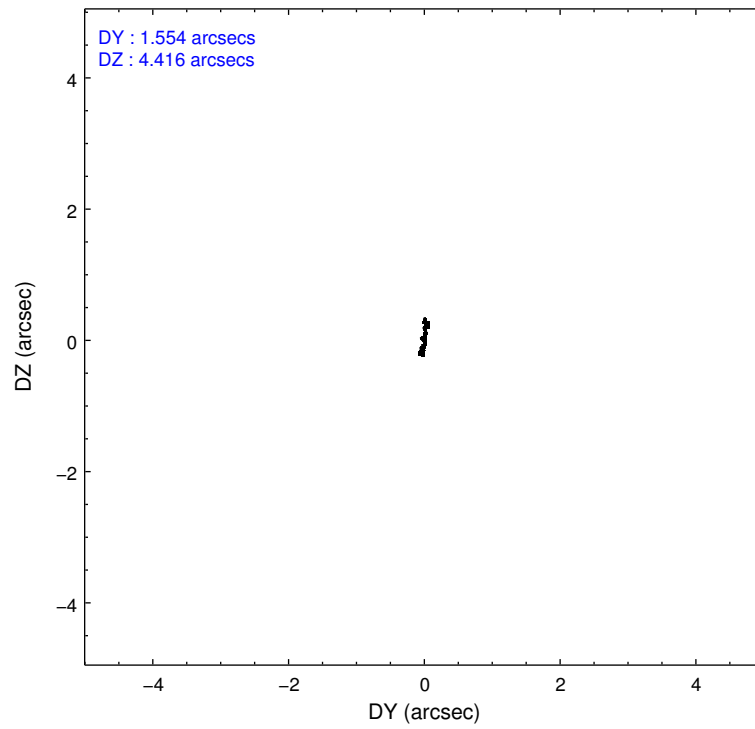
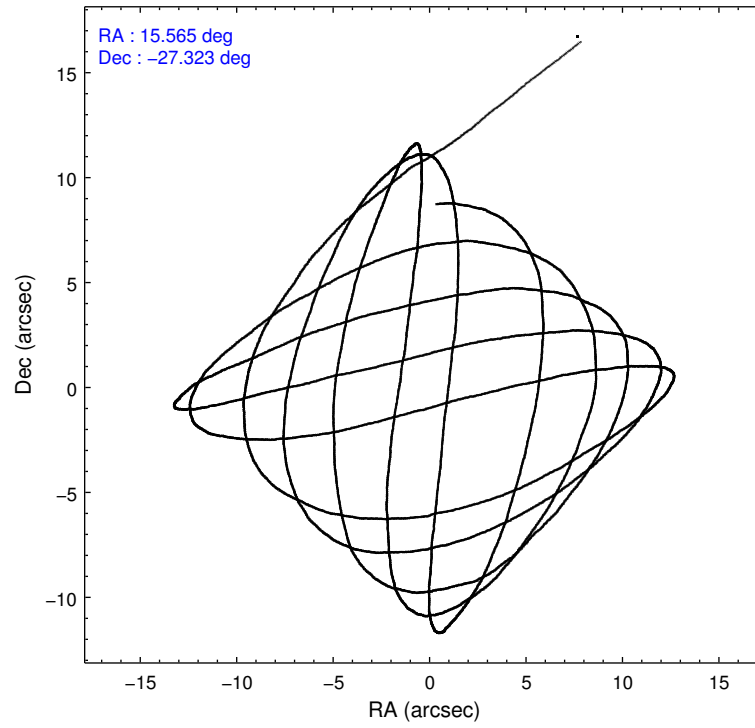
	ccd 2	ccd 3	ccd 5	ccd 6	ccd 7	ccd 8		ccd 2	ccd 3	ccd 5	ccd 6	ccd 7	ccd 8
level 1 events	31069	28399	42579	30086	36188	40495	grade 0 events	1386	1421	3590	1469	1621	2386
rejected events	27856	25059	22079	26704	20763	33165		4%	5%	8%	4%	4%	5%
rejected %	89%	88%	51%	88%	57%	81%	grade 1 events	13	15	170	12	27	24
								0%	0%	0%	0%	0%	0%
							grade 2 events	677	682	5758	694	3100	1526
								2%	2%	13%	2%	8%	3%
							grade 3 events	292	340	898	320	1415	794
								0%	1%	2%	1%	3%	1%
							grade 4 events	287	300	884	292	1366	760
								0%	1%	2%	0%	3%	1%
							grade 5 events	871	957	3231	1153	3438	1398
								2%	3%	7%	3%	9%	3%
							grade 6 events	579	599	9399	613	7941	1869
								1%	2%	22%	2%	21%	4%
							grade 7 events	26964	24085	18649	25533	17280	31738
								86%	84%	43%	84%	47%	78%

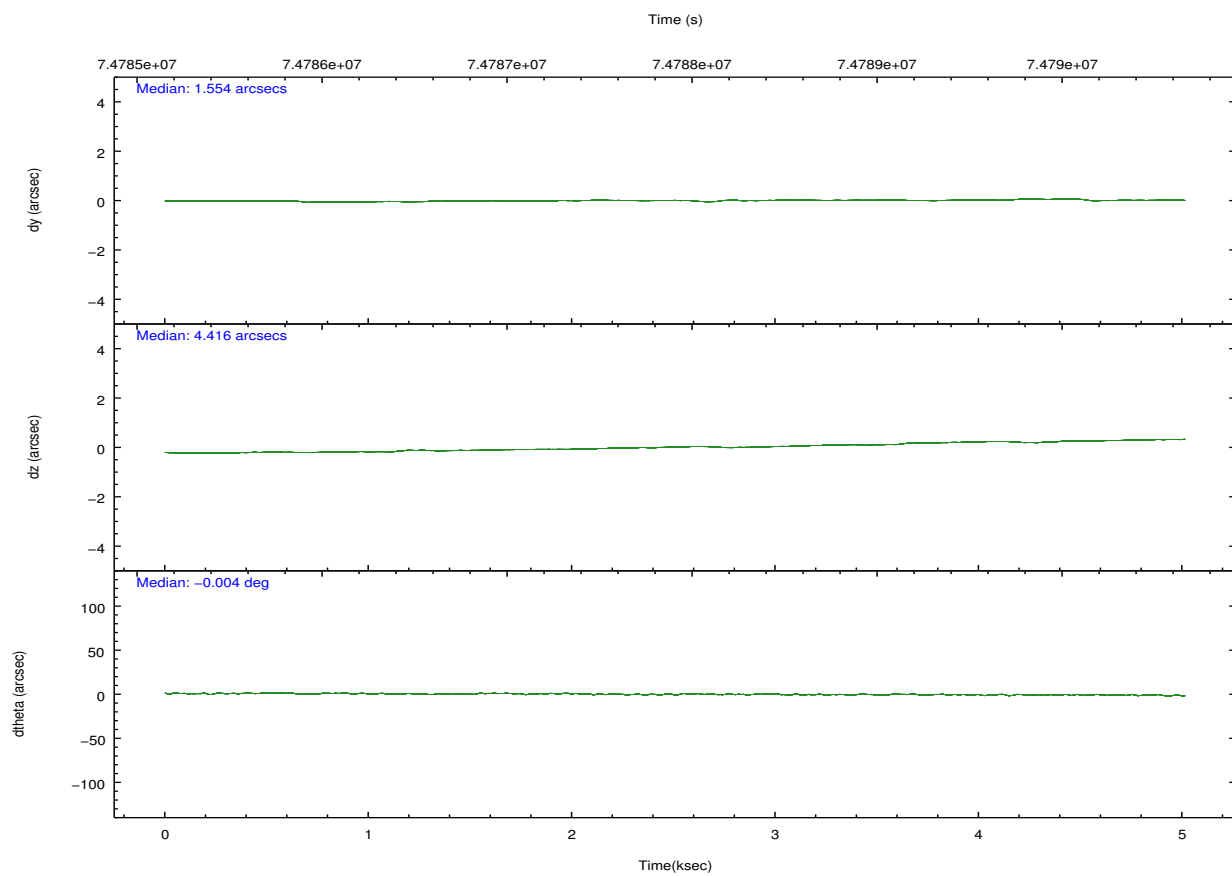
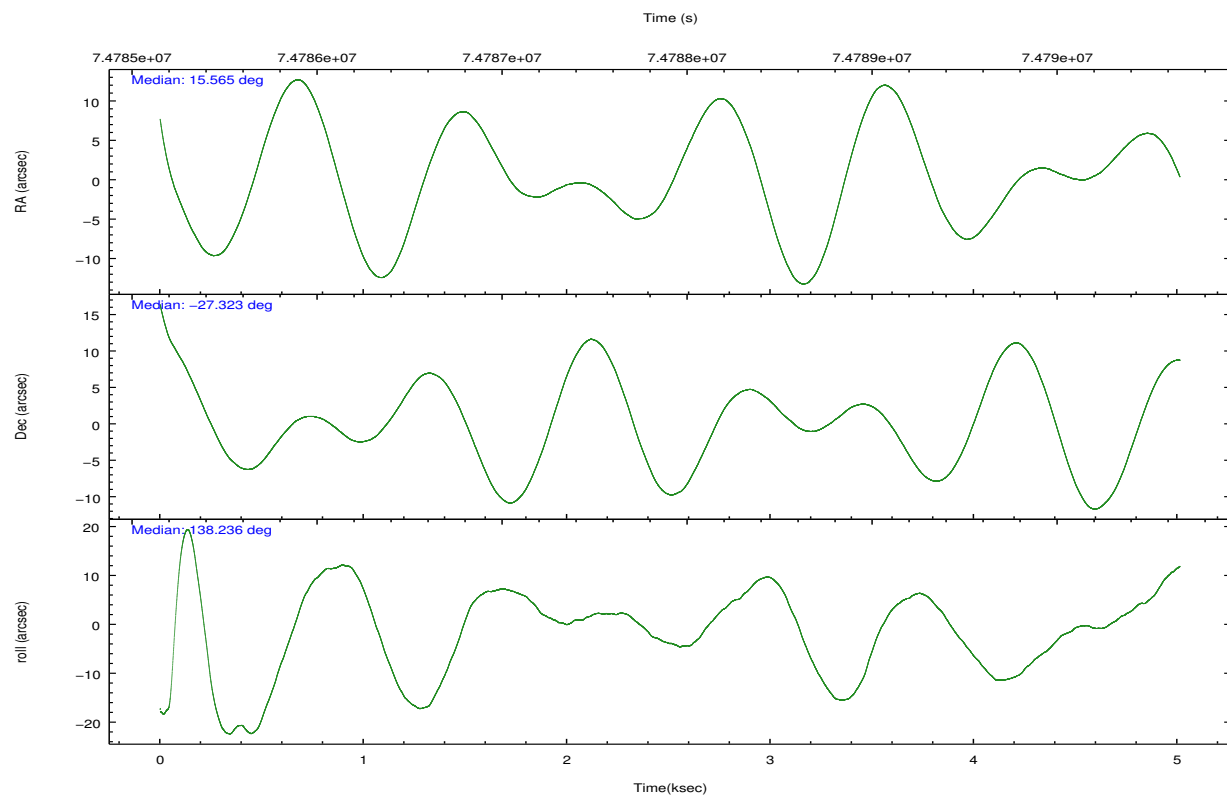
2.2 Compared Parameters

Parameter	Planned	Actual
Instrument	ACIS	ACIS
Detector	ACIS-235678	ACIS-235678
Grating	NONE	NONE
Data mode	FAINT	FAINT
Observation mode	POINTING	POINTING
[deg] Pointing RA	15.594616	15.56439092219136
[deg] Pointing Dec	-27.328111	-27.32257827546402
[deg] Pointing Roll	138.094397	138.2369858427115
[mm] SIM focus pos	-0.684267	-0.6828225247311905
[mm] SIM defocus	0	0.001444936568705701
[mm] SIM translation stage pos	-190.132523	-190.1400660498719
[mm] SIM translation stage offset	0	0.00754346686406393
[s] Observation start time (MET)	74785616.184000	74784573.45455199
Observation start date	2000-05-15T13:45:52	2000-05-15T13:29:33
[s] Observation end time (MET)	74790416.184000	74791063.75479101
Observation end date	2000-05-15T15:05:52	2000-05-15T15:17:43
Read mode	TIMED	TIMED

Parameter	Planned	Actual
Obspar format version number	7	7
Obspar file type	PREDICTED	ACTUAL
Obspar update status	NONE	UPDATED
Number of optional ACIS chips dropped	0	0
On-chip summing requested	N	N
Subarray requested	NONE	NONE
Alternating exposures requested	N	N
[s] Primary exposure time	0.000000	3.2

2.3 Aspect



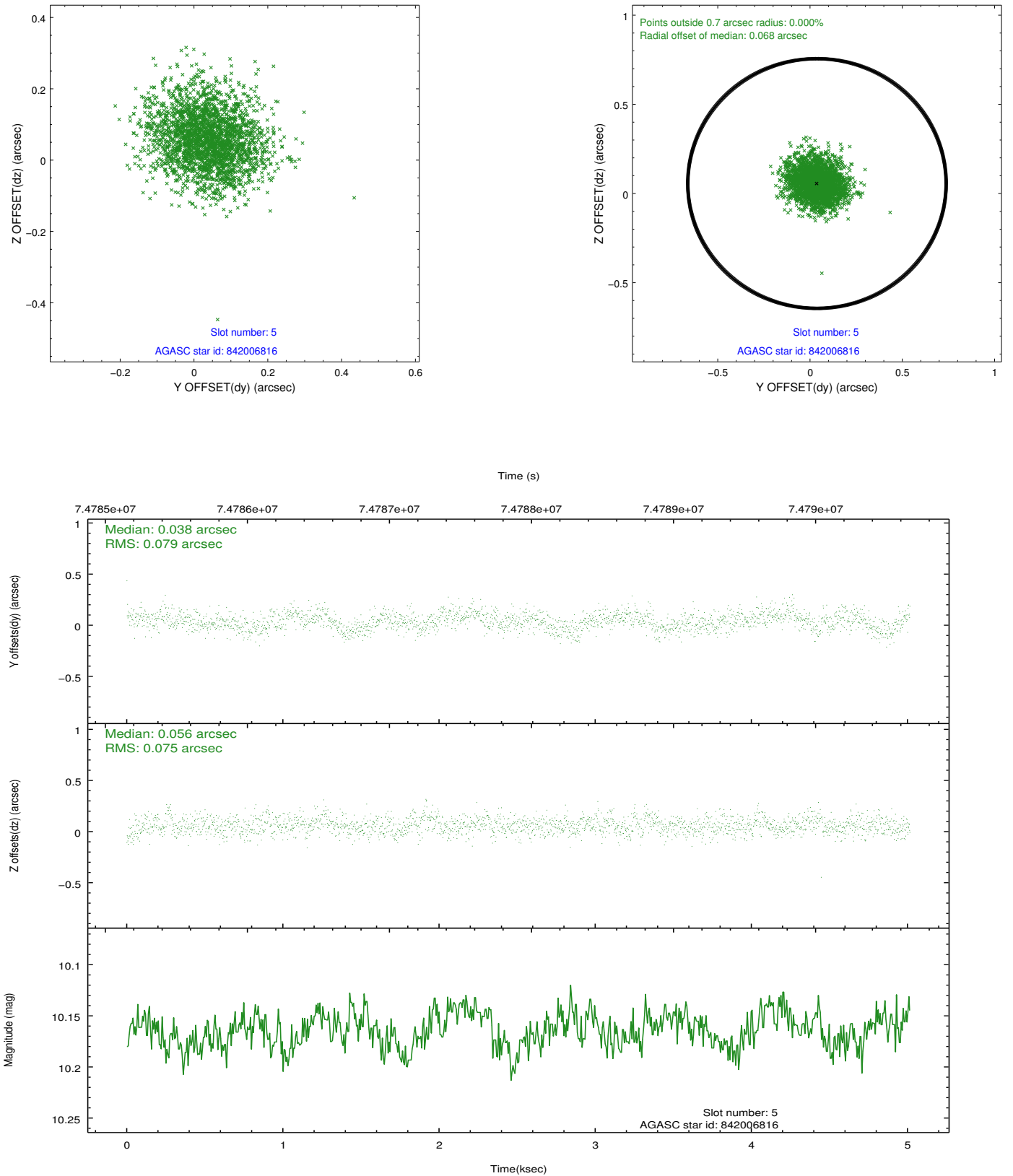


Slot Statistics

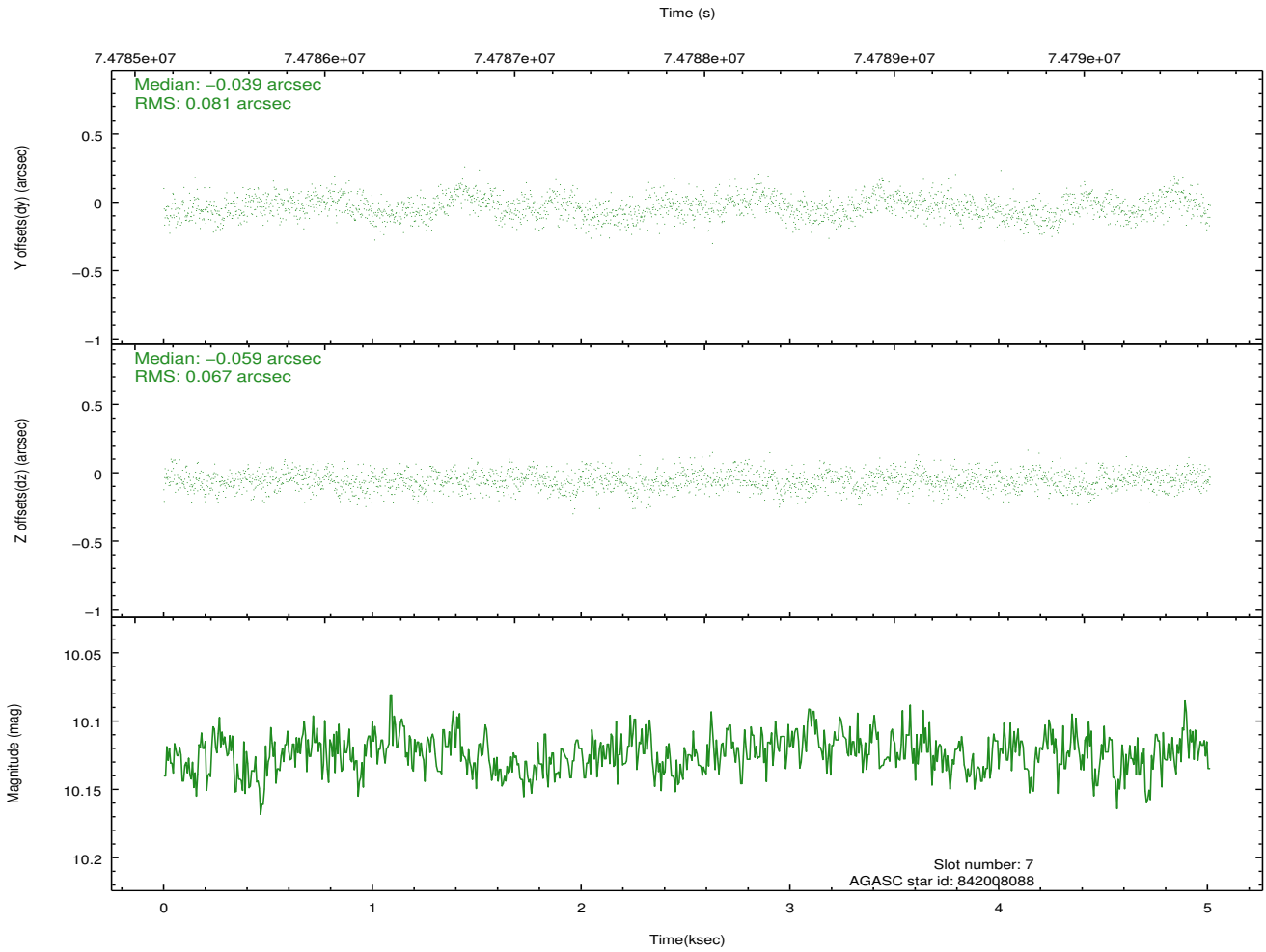
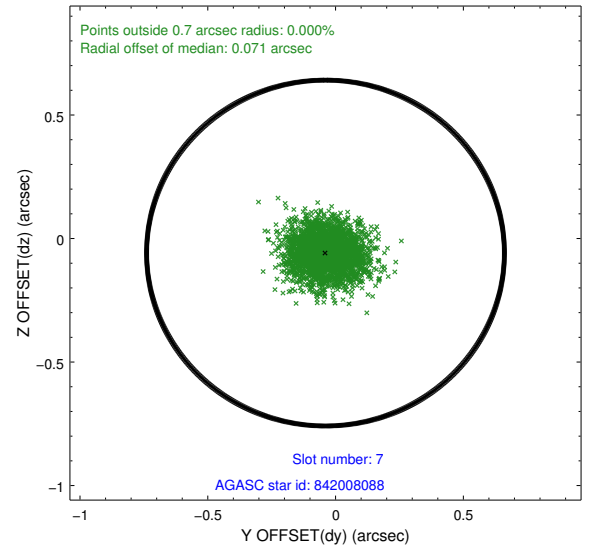
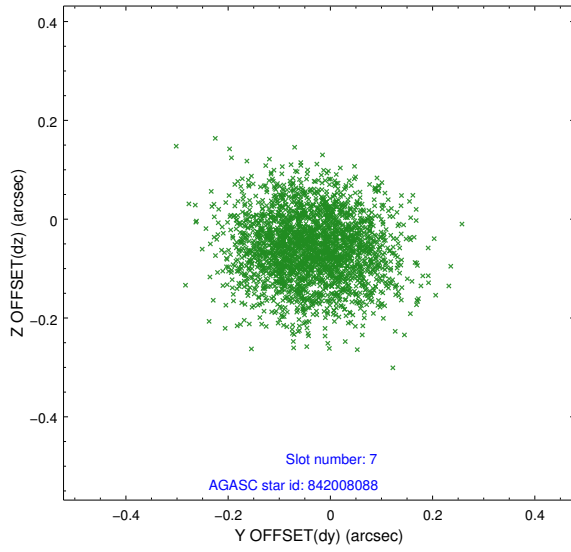
slot	status	id	mag	n_pts	med_dy	med_dz	dr1	dr2	ra	dec	mean_y	mean_z
0	FID	ACIS-S-2	7.10	1223	-0.021	-0.008	0.008	0.012	0.000000	0.000000	-754.19	-1725.53
1	FID	ACIS-S-4	7.21	1223	-0.006	0.012	0.006	0.009	0.000000	0.000000	2158.57	181.70
2	FID	ACIS-S-5	7.23	1224	-0.004	0.005	0.008	0.012	0.000000	0.000000	-1805.43	176.78
3	UNUSED		0.00	0	0.000	0.000	0.000	0.000	0.000000	0.000000	0.00	0.00
4	UNUSED		0.00	0	0.000	0.000	0.000	0.000	0.000000	0.000000	0.00	0.00
5	GUIDE	842006816	10.16	2444	0.038	0.056	0.116	0.187	15.691545	-26.989955	582.90	-1112.93
6	OMITTED		0.00	0	0.000	0.000	0.000	0.000	0.000000	0.000000	0.00	0.00
7	GUIDE	842008088	10.12	2446	-0.039	-0.059	0.112	0.179	15.164558	-27.123912	1516.36	375.15

2.4 Star Slots

2.4.1 Slot 5

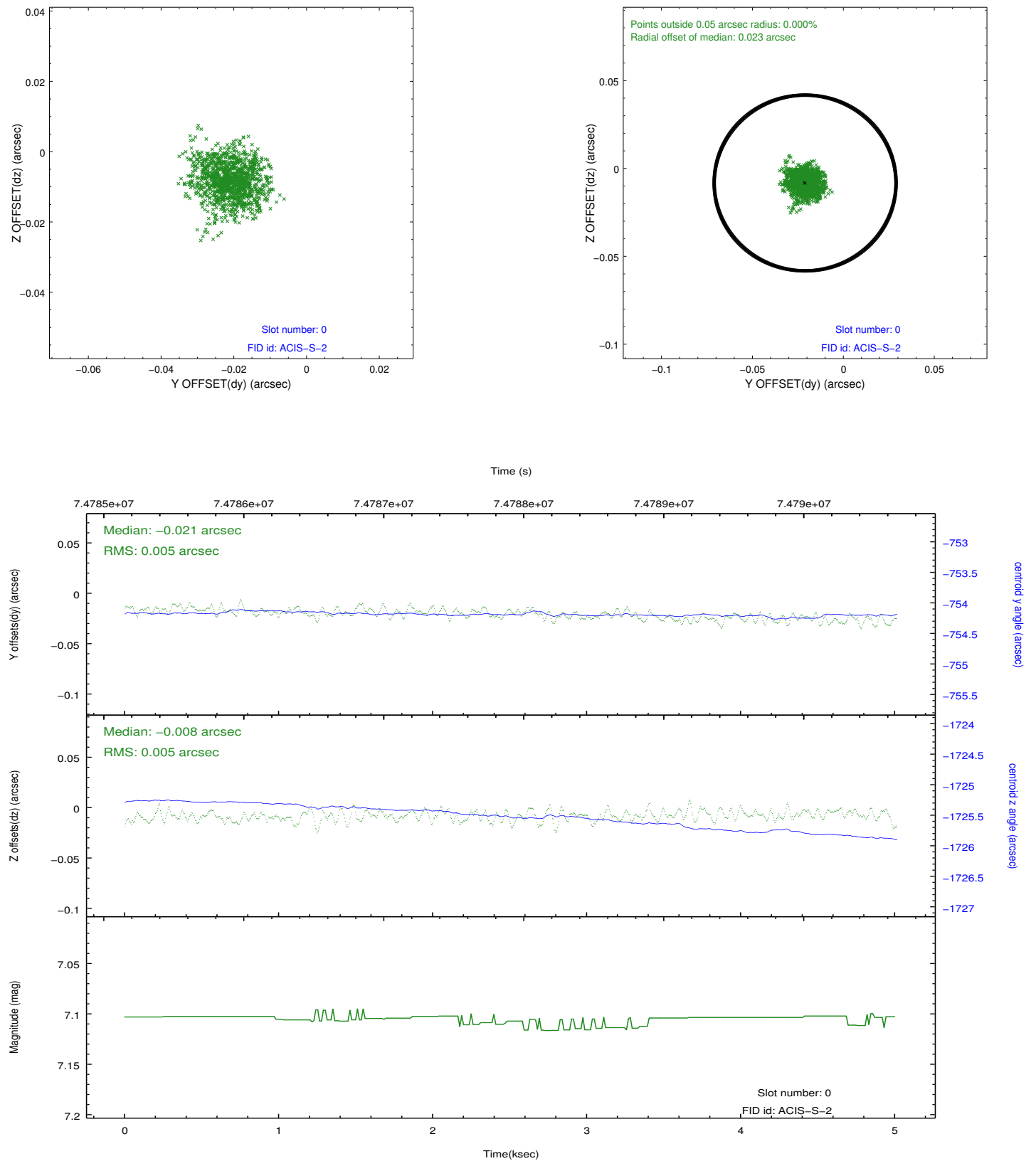


2.4.2 Slot 7

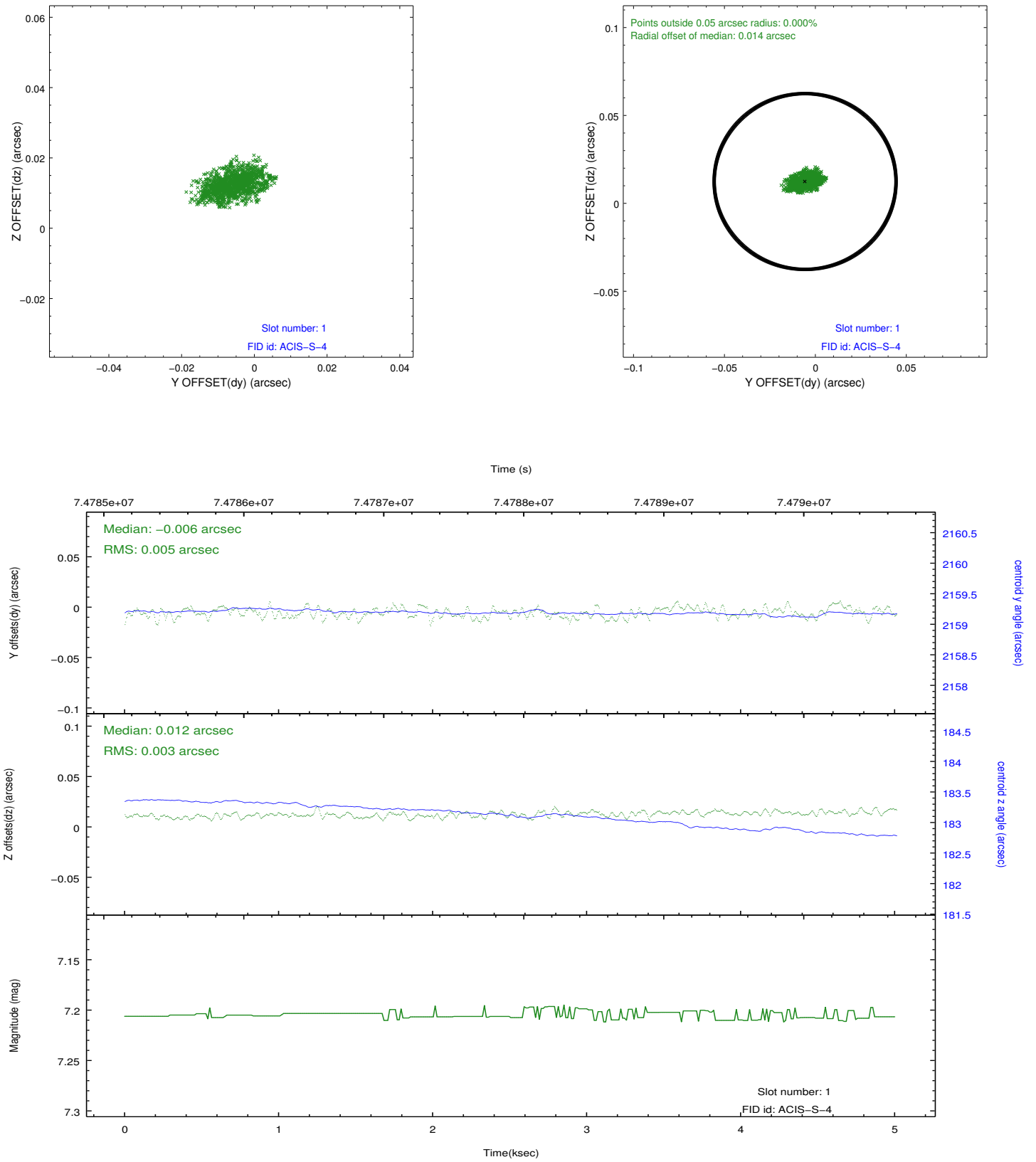


2.5 FID Slots

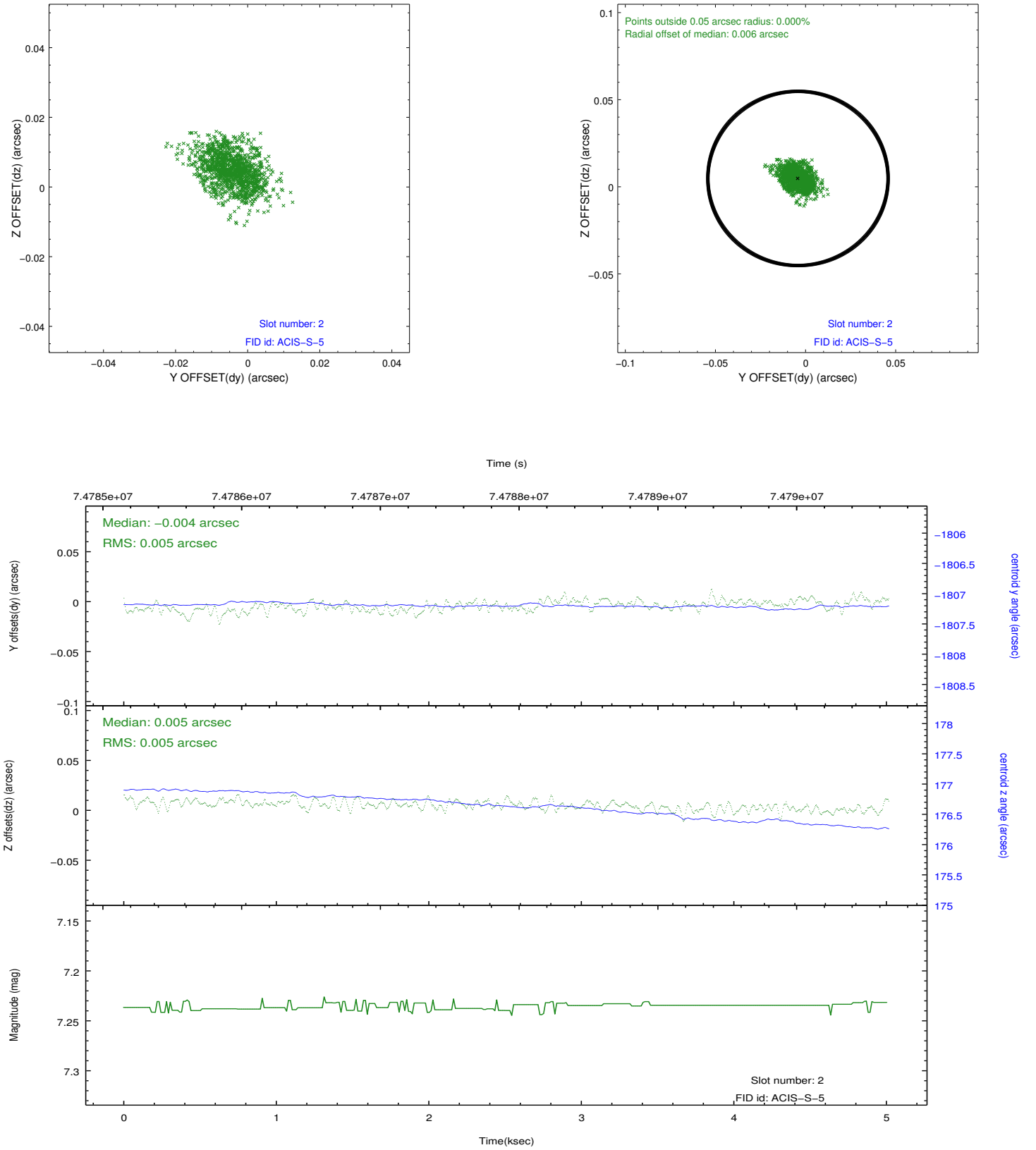
2.5.1 Slot 0



2.5.2 Slot 1



2.5.3 Slot 2



A Summary

A.1 Status

V&V Scientist	Beth Sundheim
V&V Date (YYYY-MM-DD)	2012.08.31
V&V Edition	1
V&V Disposition and Status	OK
V&V Charge Time	4.444

A.2 Comments

Slots 3 and 4 were not utilized in this observation.

The guide star in slot 6 was removed from the aspect solution due to poor data quality. The aspect solution is improved by the removal of this star from the solution.