

V&V Reference Report

L2 ASCDS Version : 8.4.5

Observation 438 - L2 Version 5
Chandra X-Ray Center

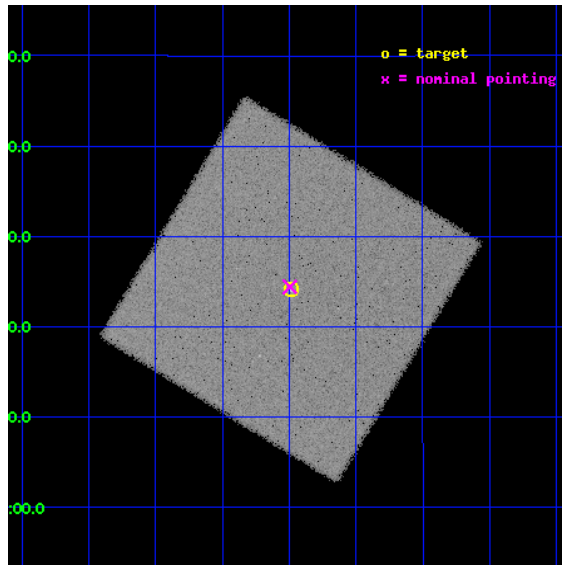
L2 Processing Date : Aug 22 2012

Contents

1	Front	2
2	OBI	3
2.1	OBI	3
2.1.1	Images	3
2.1.2	Parameters	4
2.1.3	Events	4
2.2	Compared Parameters	5
2.3	Aspect	6
2.4	Star Slots	9
2.4.1	Slot 3	9
2.4.2	Slot 4	10
2.4.3	Slot 5	11
2.4.4	Slot 6	12
2.4.5	Slot 7	13
2.5	FID Slots	14
2.5.1	Slot 0	14
2.5.2	Slot 1	15
2.5.3	Slot 2	16
A	Summary	17
A.1	Status	17
A.2	Comments	17

1 Front

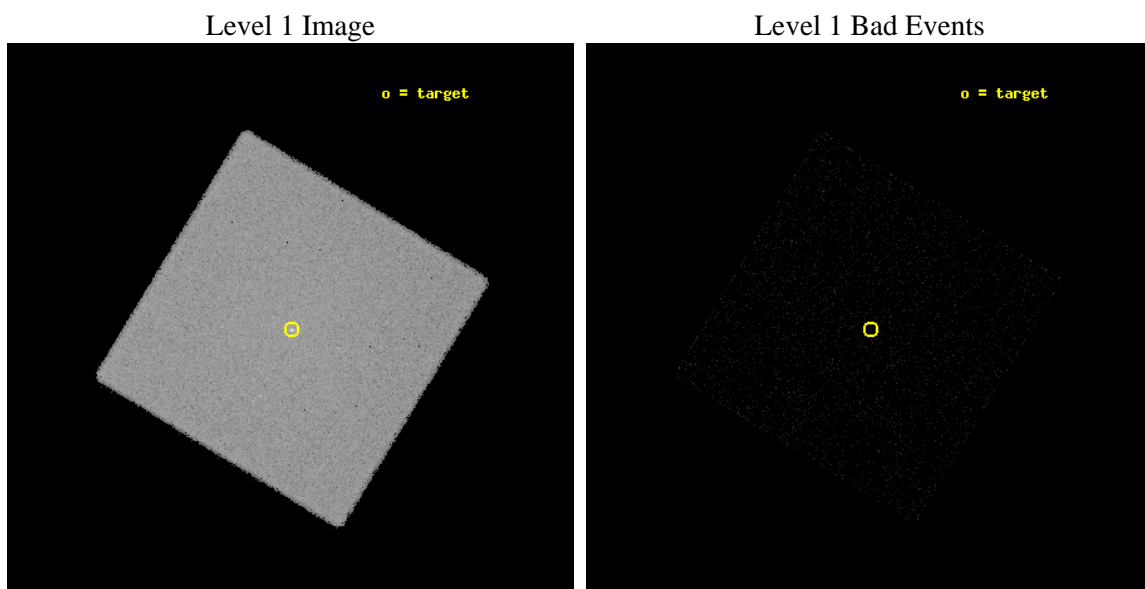
seq_num	700110	Sequence number
obs_id	438	Observation id
title	STUDIES OF STARBURST GALAXIES	Proposal title
observer	Dr. Stephen Murray	Principal investigator
object	NGC 6240	Source name
ra_targ	253.245833	Observer's specified target RA [deg]
dec_targ	2.403333	Observer's specified target Dec [deg]
ra_nom	253.24854522447	Nominal RA [deg]
dec_nom	2.4069002259006	Nominal Dec [deg]
roll_nom	76.357486274061	Nominal Roll [deg]
revision	5	Processing version of data
ontime	10478.831632242	[s]
livetime	10421.240475632	Ontime multiplied by DTCOR
l2events	279861	Number of level 2 events



2 OBI

2.1 OBI

2.1.1 Images



2.1.2 Parameters

obi_num	0	Obi number	sched_exp_time	10000.000000	[s] Scheduled observation exposure time
ascdsver	8.4.5	Processing system revision	ontime	10478.831632242	[s]
caldbver	4.5.1.1	 	l1events	494368	Number of level 1 events
date	2012-08-22T19:23:54	Date and time of file creation			
revision	5	Processing version of data			

2.1.3 Events

Level 1 Events

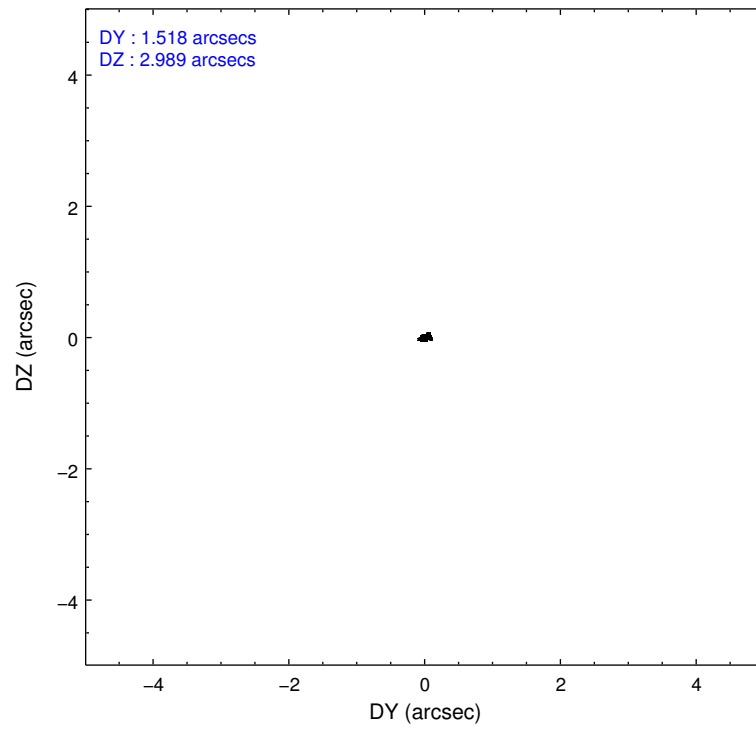
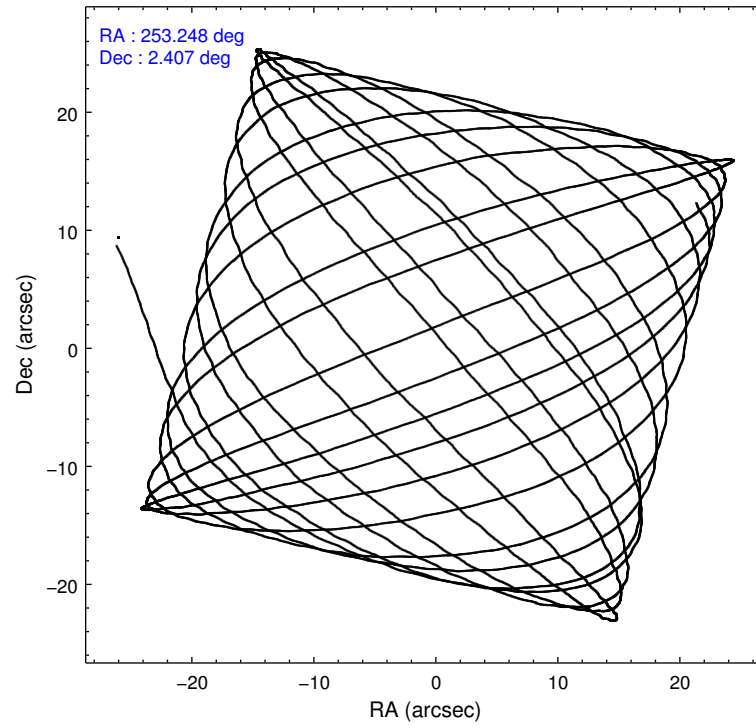
	segment 0
level 1 events	494368
rejected events	68449
rejected %	13%

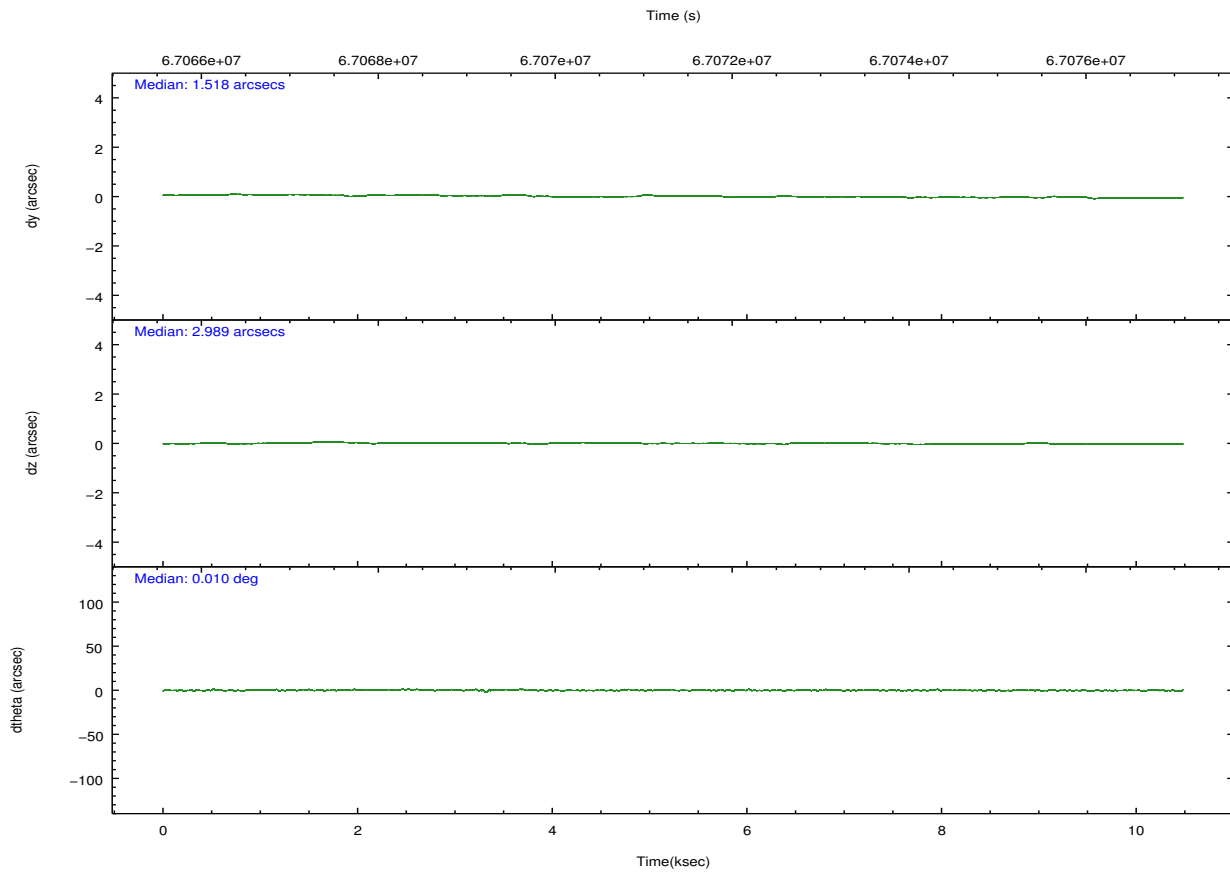
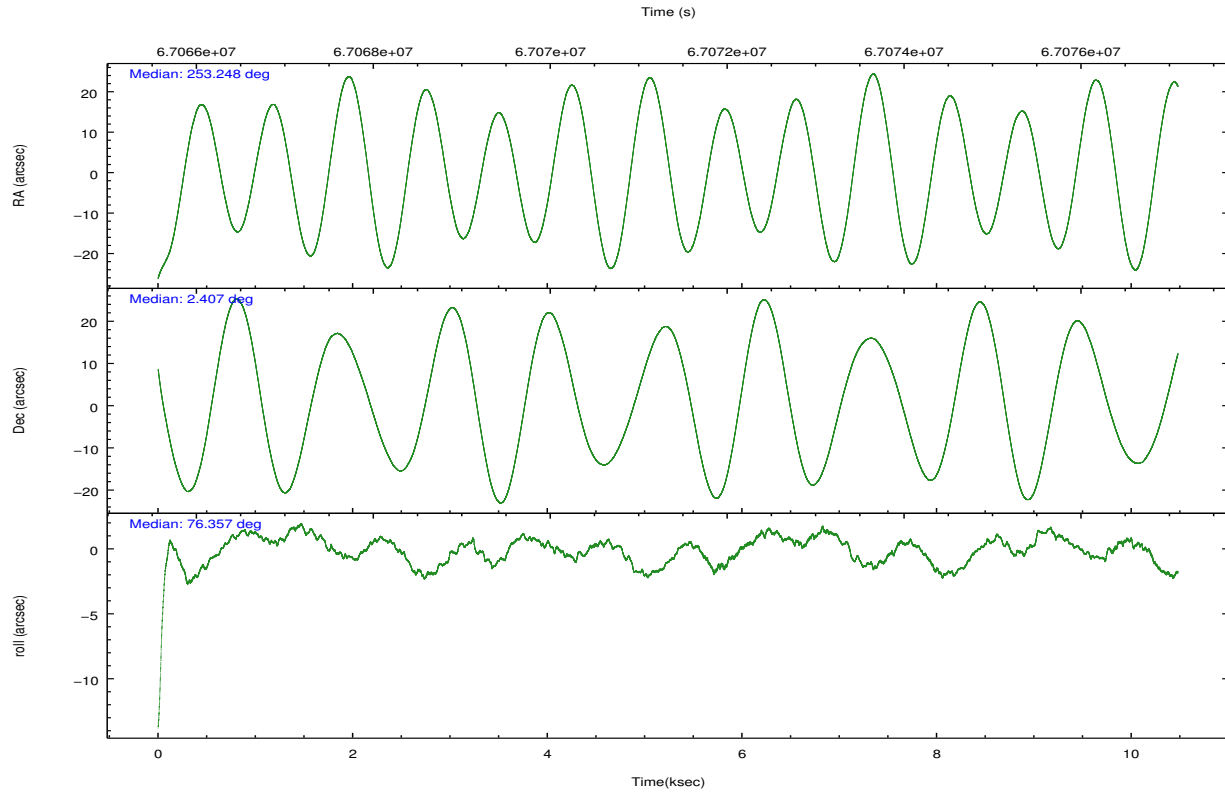
2.2 Compared Parameters

Parameter	Planned	Actual
Instrument	HRC	HRC
Detector	HRC-I	HRC-I
Grating	NONE	NONE
Data mode	OBSERVING	OBSERVING
Observation mode	POINTING	POINTING
[deg] Pointing RA	253.256544	253.2485452244698
[deg] Pointing Dec	2.380871	2.406900225900577
[deg] Pointing Roll	76.452653	76.35748627406105
[mm] SIM focus pos	-1.040293	-1.038866356238299
[mm] SIM defocus	0	0.001426264420575141
[mm] SIM translation stage pos	126.985494	126.9829799899862
[mm] SIM translation stage offset	0	0.002508901615314585
[s] Observation start time (MET)	67066573.184000	67064912.71807
Observation start date	2000-02-16T05:35:09	2000-02-16T05:08:32
[s] Observation end time (MET)	67076573.184000	67077095.868515
Observation end date	2000-02-16T08:21:49	2000-02-16T08:31:35

Parameter	Planned	Actual
Obspar format version number	7	7
Obspar file type	PREDICTED	ACTUAL
Obspar update status	NONE	UPDATED

2.3 Aspect



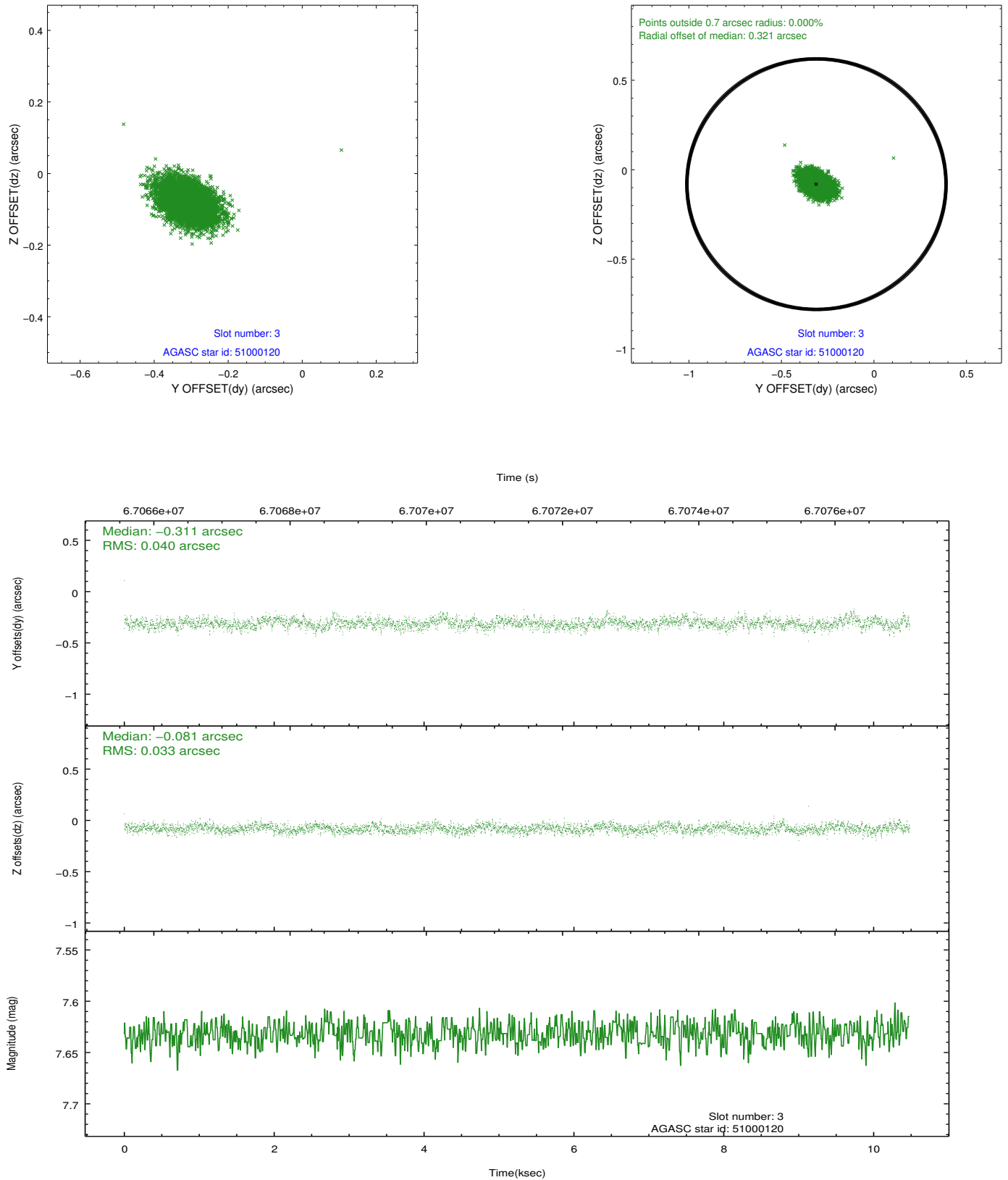


Slot Statistics

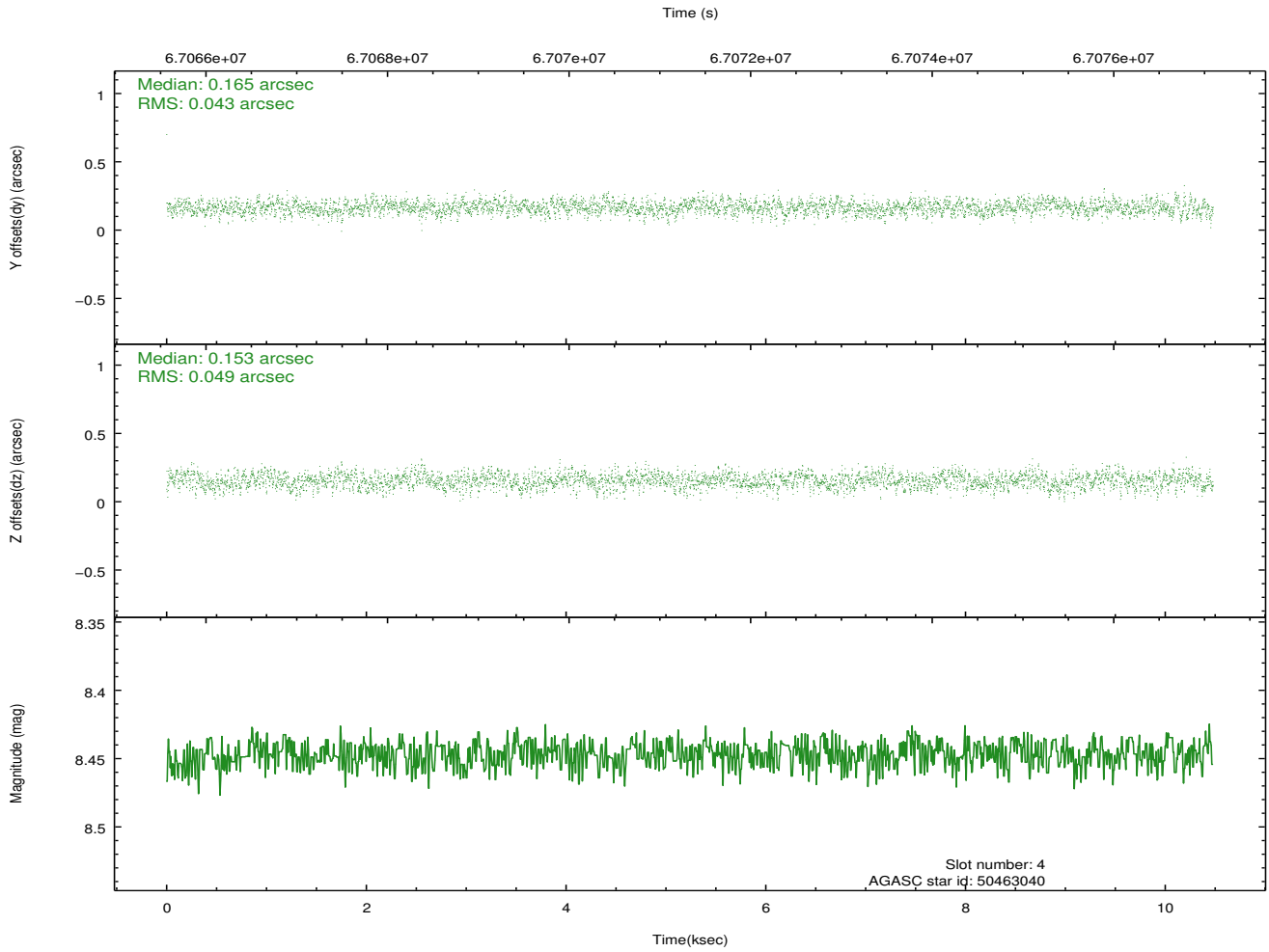
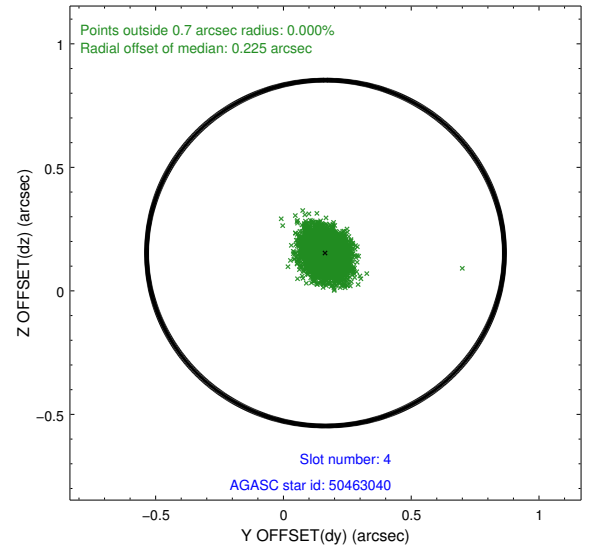
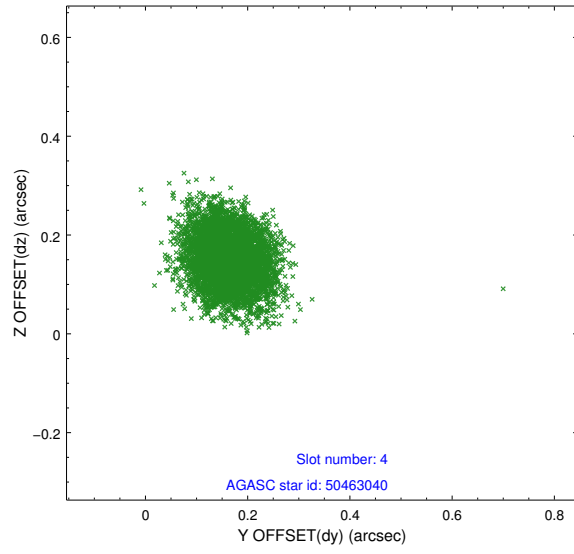
slot	status	id	mag	n_pts	med_dy	med_dz	dr1	dr2	ra	dec	mean_y	mean_z
0	FID	HRC-I-1	6.97	2556	0.062	0.006	0.006	0.010	0.000000	0.000000	-756.93	-1290.70
1	FID	HRC-I-3	7.05	2556	0.029	-0.036	0.007	0.011	0.000000	0.000000	-1185.70	1013.33
2	FID	HRC-I-4	7.00	2556	0.024	-0.059	0.005	0.009	0.000000	0.000000	1285.41	1011.76
3	GUIDE	51000120	7.63	5112	-0.311	-0.081	0.054	0.092	253.311844	3.020755	2286.52	345.86
4	GUIDE	50463040	8.45	5113	0.165	0.153	0.070	0.112	253.537698	1.853522	-1607.20	-1428.48
5	GUIDE	50987568	8.95	5111	0.031	0.132	0.068	0.115	253.458665	2.495501	572.02	-610.63
6	GUIDE	50874720	8.85	5110	-0.170	-0.164	0.079	0.128	252.871376	2.926043	1584.51	1805.39
7	GUIDE	50333200	9.03	5112	0.285	-0.038	0.075	0.123	252.978043	1.813597	-2218.68	495.71

2.4 Star Slots

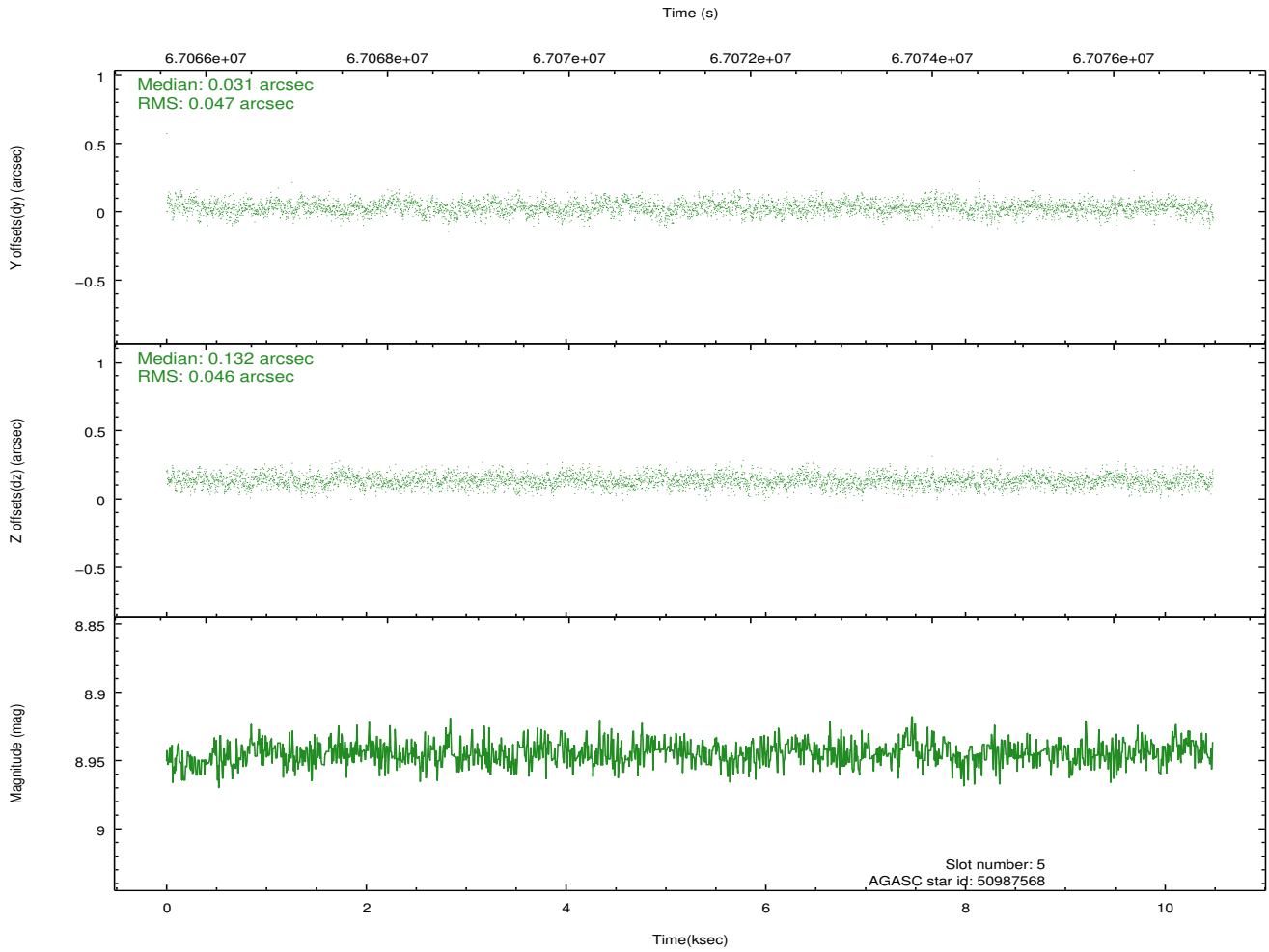
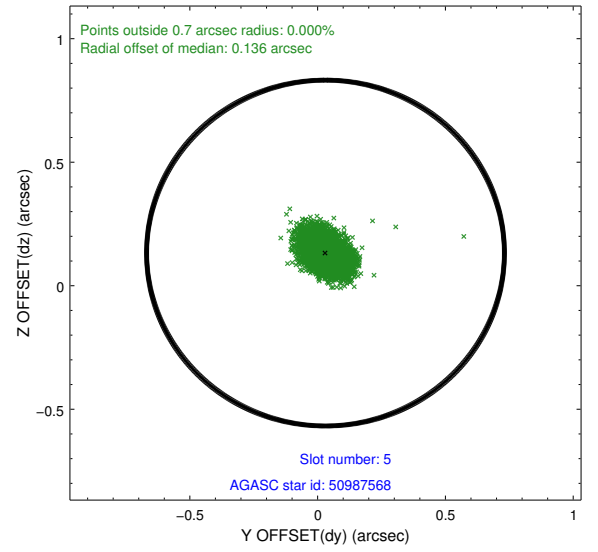
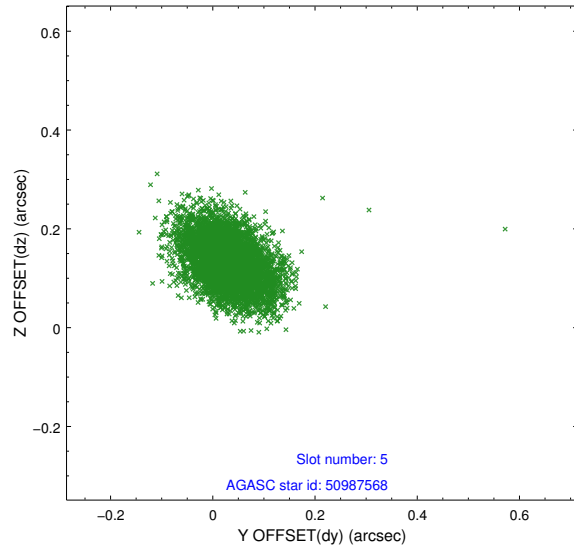
2.4.1 Slot 3



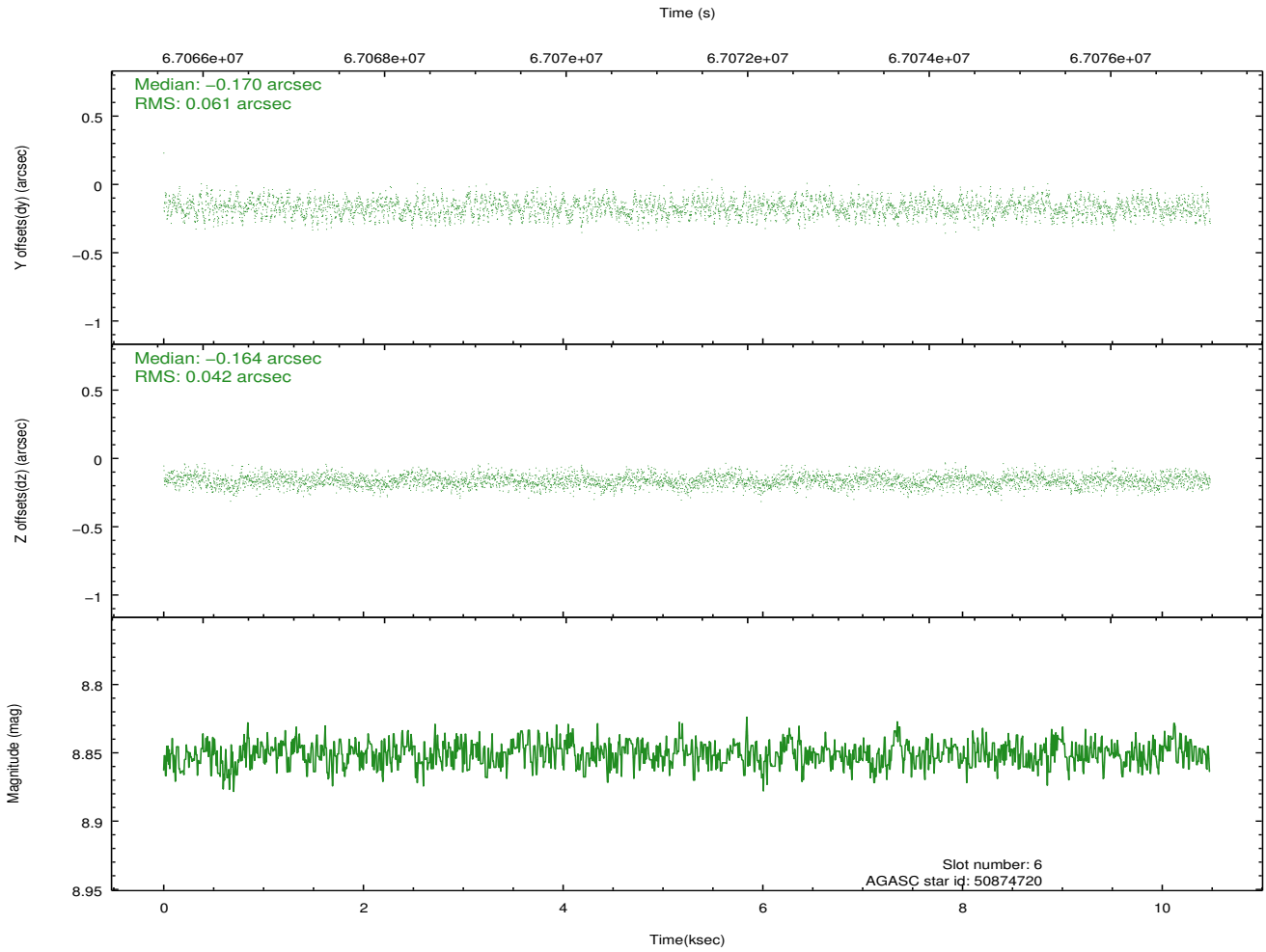
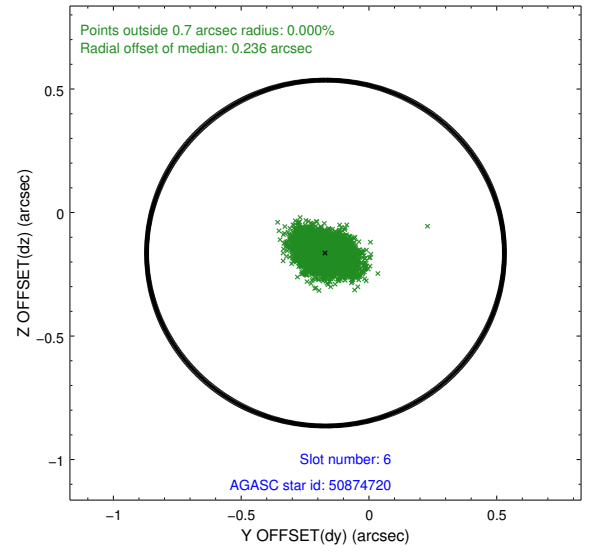
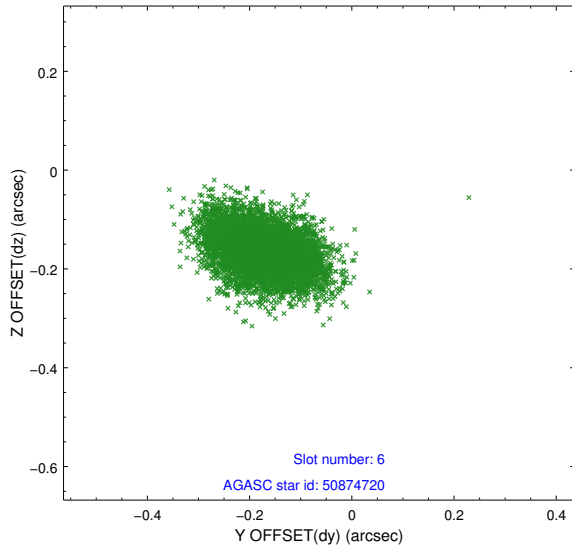
2.4.2 Slot 4



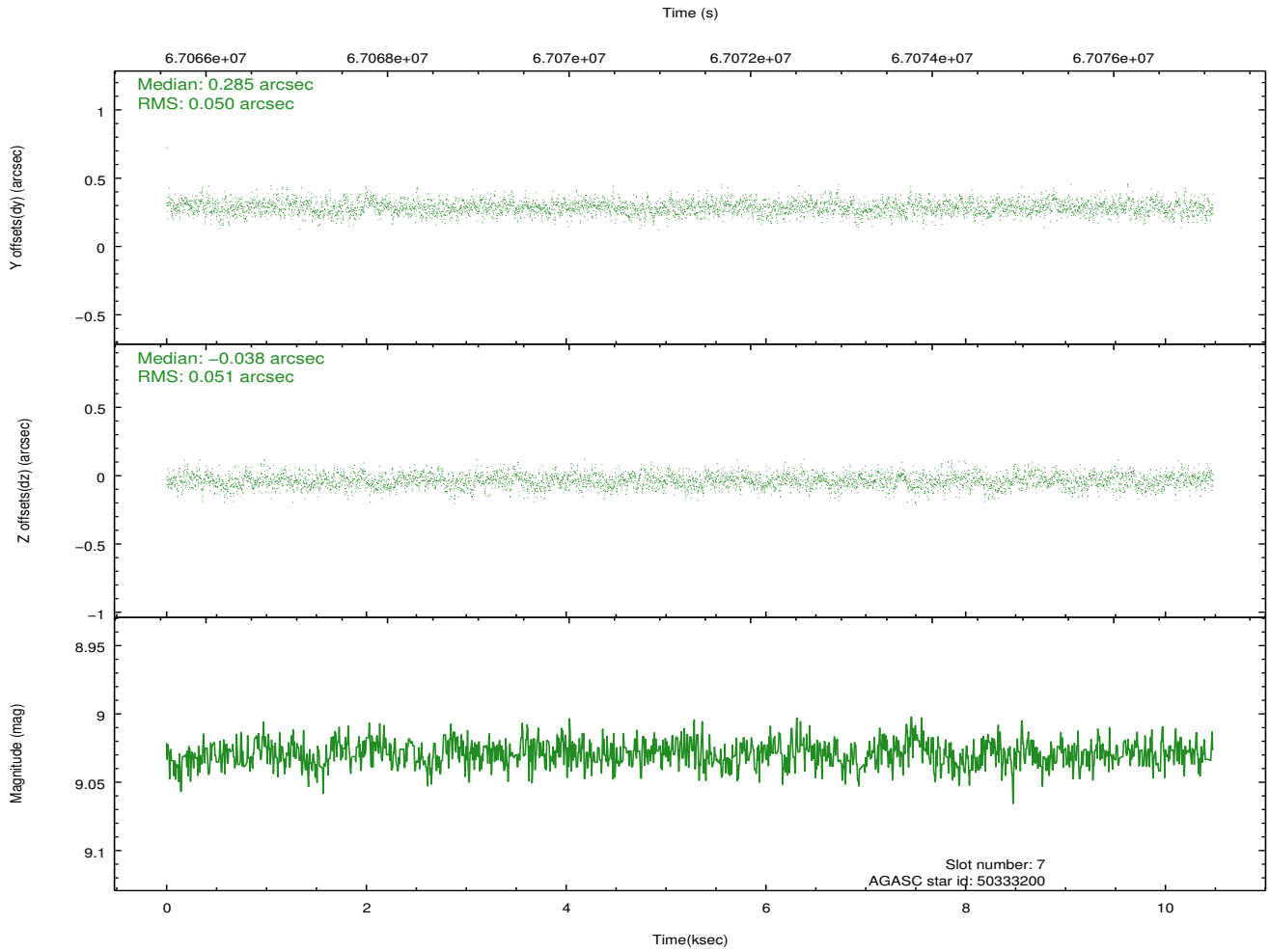
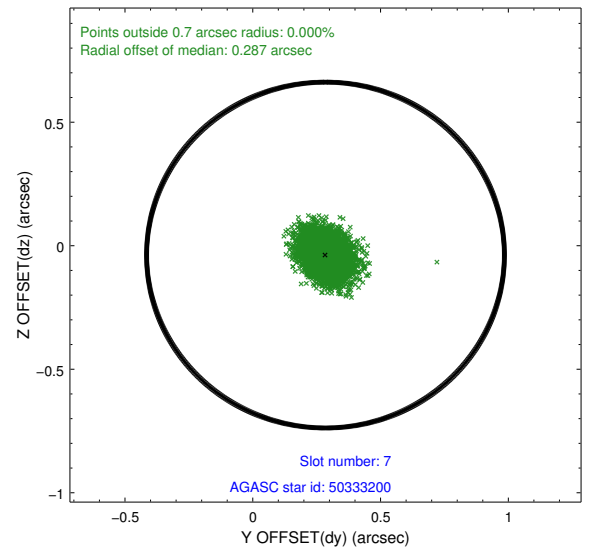
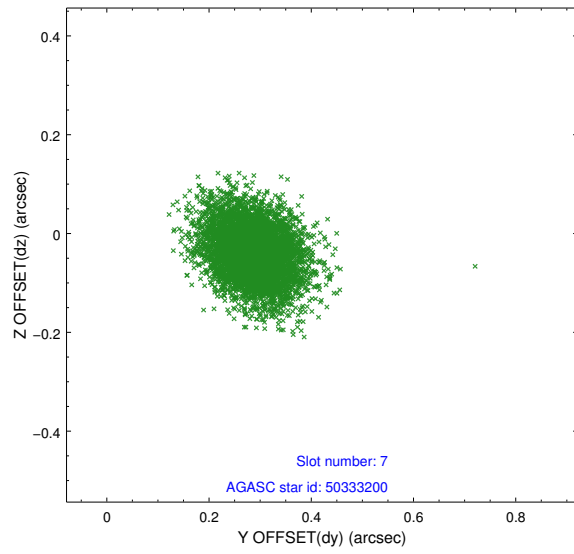
2.4.3 Slot 5



2.4.4 Slot 6

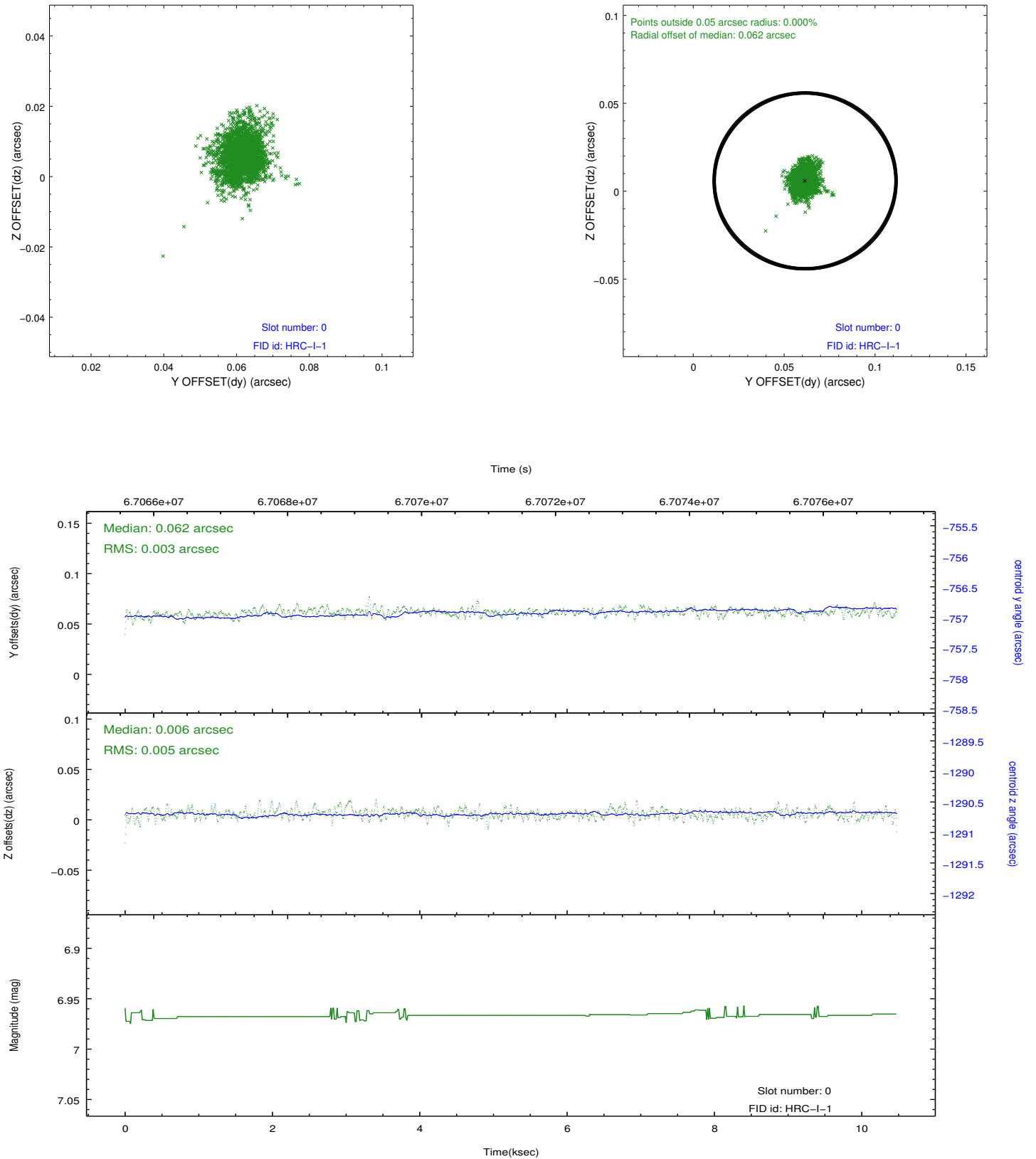


2.4.5 Slot 7

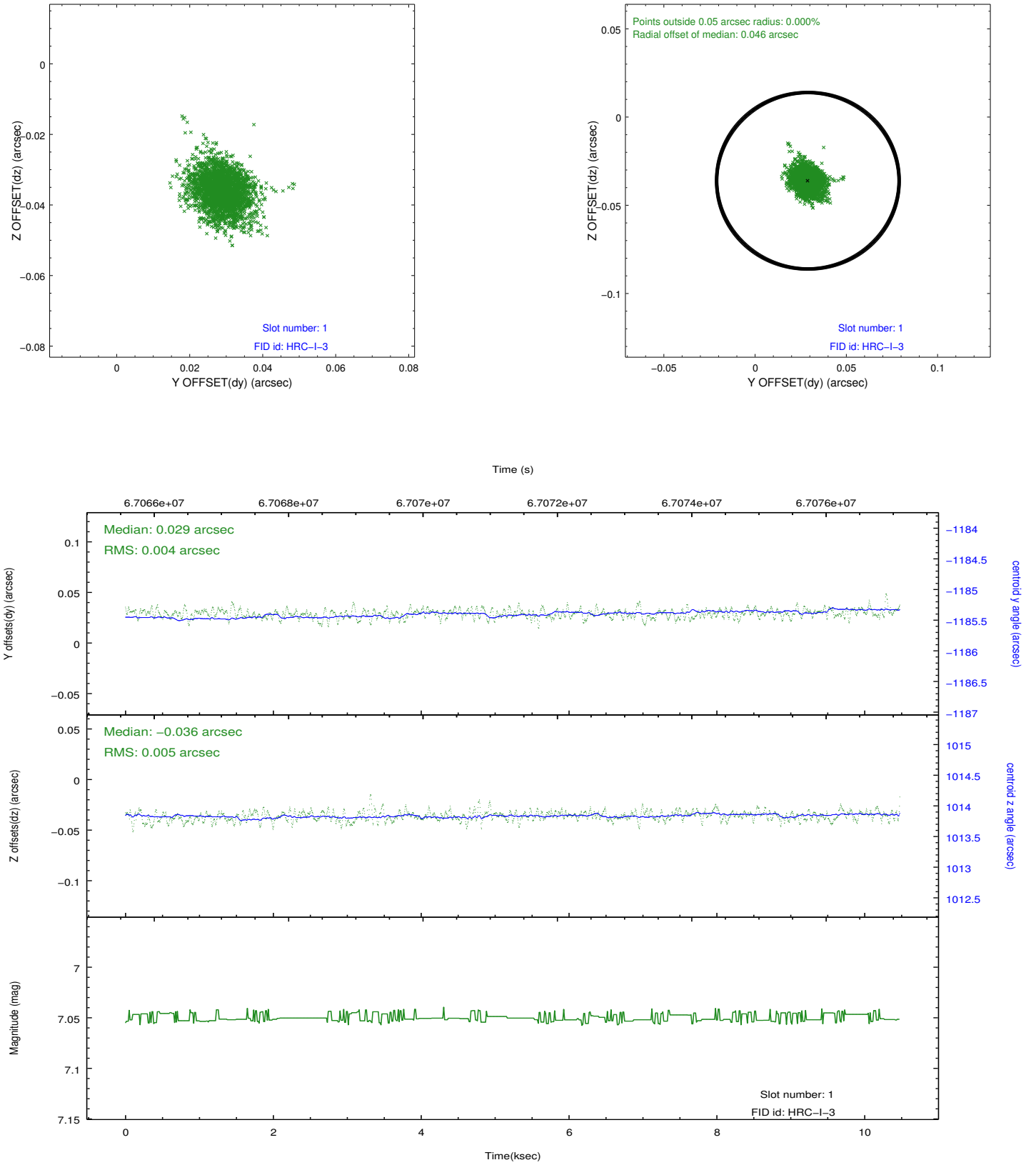


2.5 FID Slots

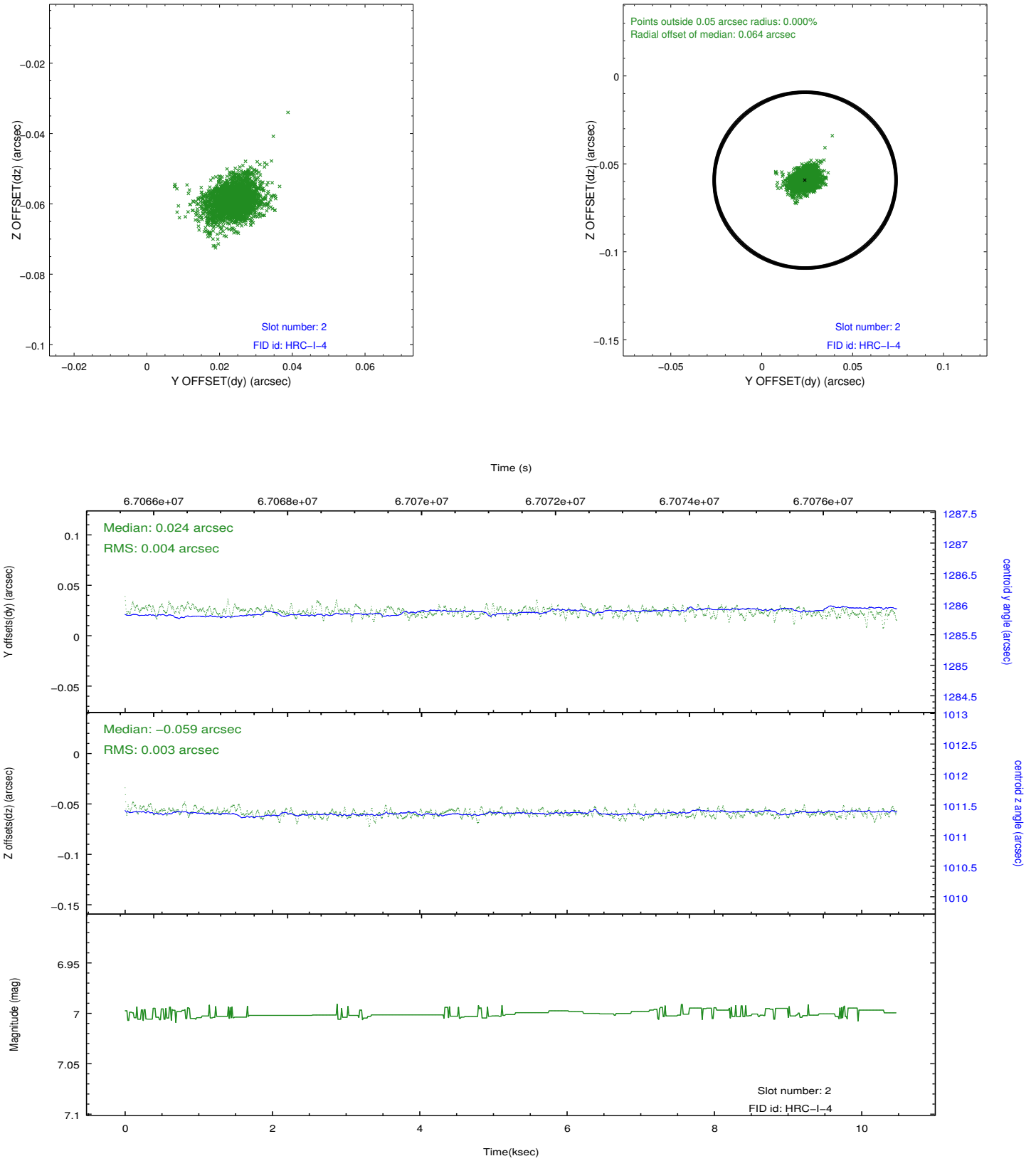
2.5.1 Slot 0



2.5.2 Slot 1



2.5.3 Slot 2



A Summary

A.1 Status

V&V Scientist	Jen Lauer
V&V Date (YYYY-MM-DD)	2012.08.23
V&V Edition	1
V&V Disposition and Status	OK
V&V Charge Time	10.479

A.2 Comments