

V&V Reference Report

L2 ASCDS Version : 7.6.10

Observation 424 - L2 Version 2
Chandra X-Ray Center

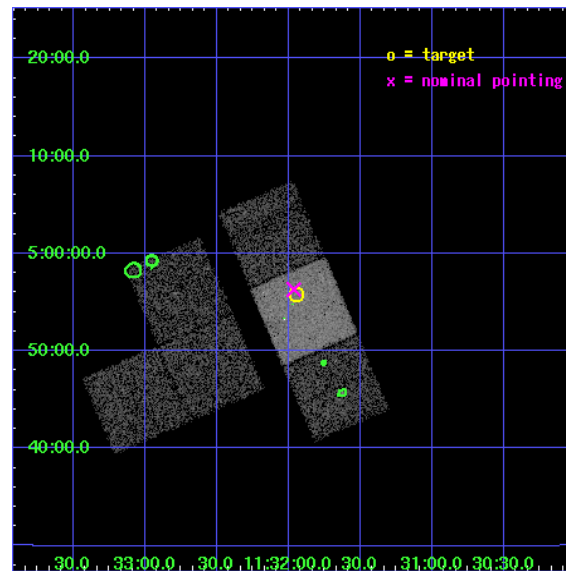
L2 Processing Date : Jul 12 2007

Contents

1	Front	2
2	OBI	3
2.1	OBI	3
2.1.1	Images	3
2.1.2	Bias	3
2.1.3	Parameters	4
2.1.4	Events	4
2.2	Compared Parameters	5
2.3	Aspect	6
2.4	Star Slots	9
2.4.1	Slot 3	9
2.4.2	Slot 4	10
2.4.3	Slot 5	11
2.4.4	Slot 6	12
2.4.5	Slot 7	13
2.5	FID Slots	14
2.5.1	Slot 0	14
2.5.2	Slot 1	15
2.5.3	Slot 2	16
3	Point Sources	17
A	Summary	18
A.1	Status	18
A.2	Comments	18

1 Front

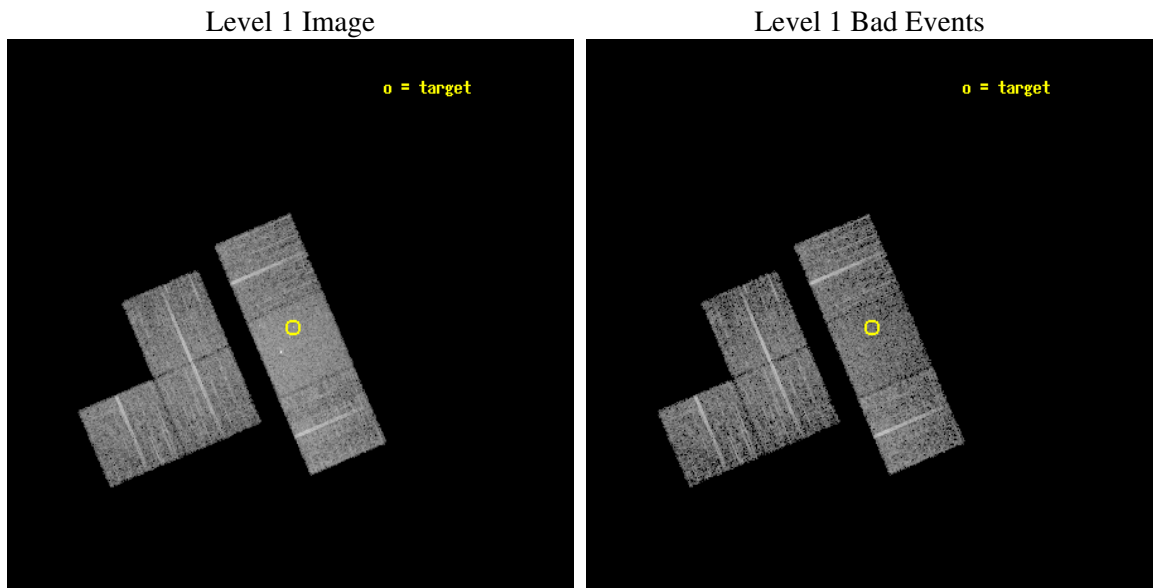
seq_num	700096
obs_id	424
title	A SURVEY OF GRAVITATIONALLY LENSED QUASARS
observer	Prof. Gordon Garmire
object	PMN J1131+0455
dtcycle	0
cycle	P
ra_targ	172.985417
dec_targ	4.930278
ra_nom	172.99086633313
dec_nom	4.9385071292506
roll_nom	66.932475421386
revision	2
ontime	6752.0000062883
livetime	6666.5021166424
ontime1	6752.0000062883
ontime2	6752.0000062883
ontime3	6748.7590360492
ontime6	6752.0000062883
ontime7	6752.0000062883
ontime8	6752.0000062883
l2events	48708



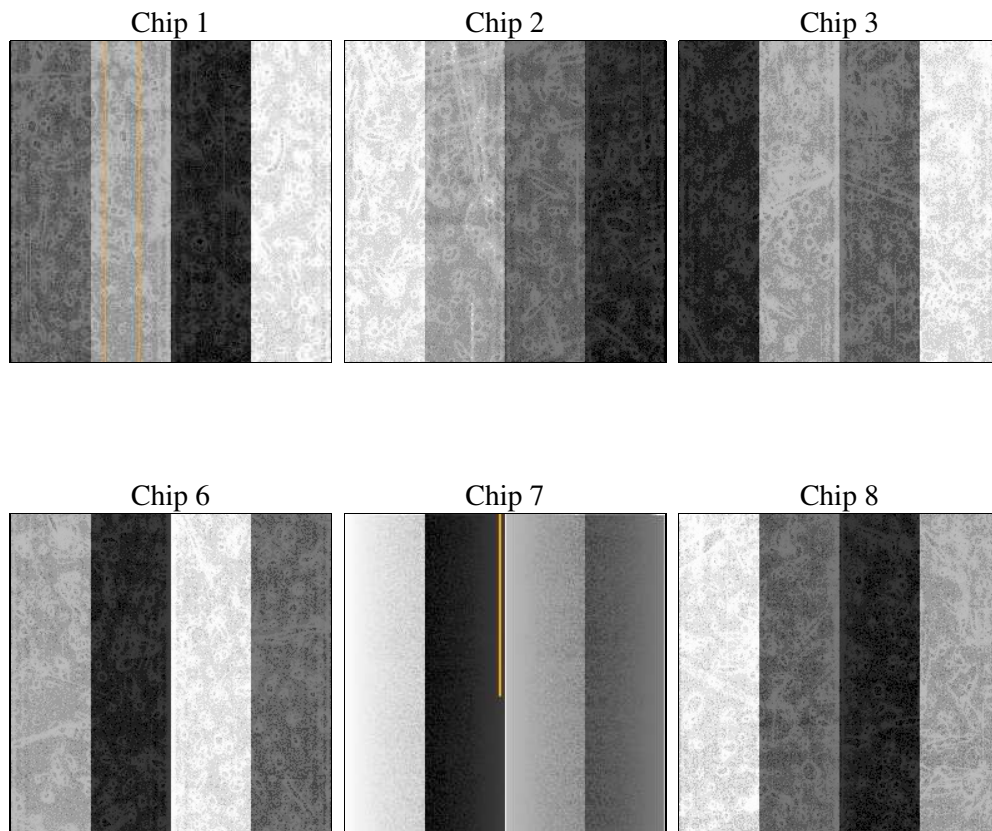
2 OBI

2.1 OBI

2.1.1 Images



2.1.2 Bias



2.1.3 Parameters

obi_num	1
ascdsver	7.6.11
caldsver	3.4.0
date	2007-07-12T20:59:43
revision	2

sched_exp_time	6800.000000
ontime	6752.0000062883
ontime1	6752.0000062883
ontime2	6752.0000062883
ontime3	6748.7590360492
ontime6	6752.0000062883
ontime7	6752.0000062883
ontime8	6752.0000062883
l1events	268118

2.1.4 Events

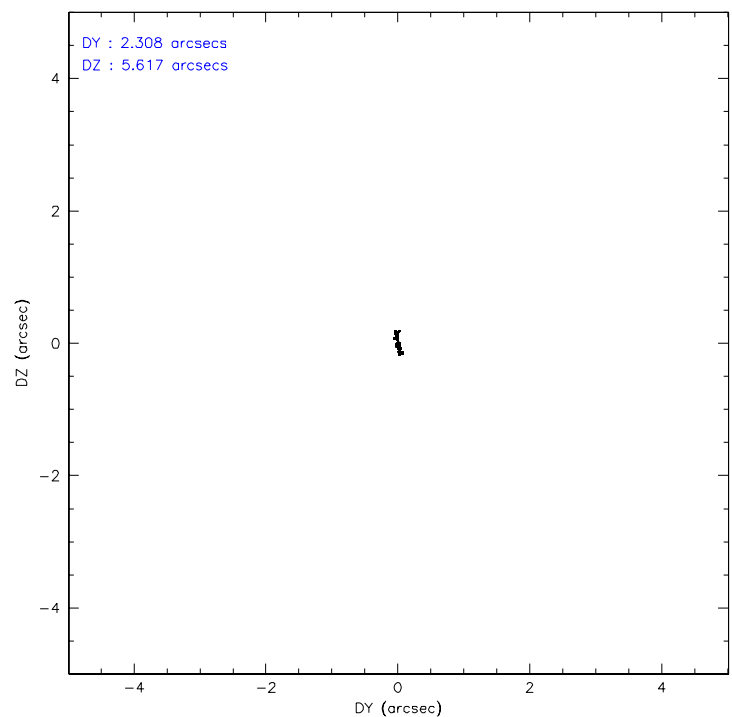
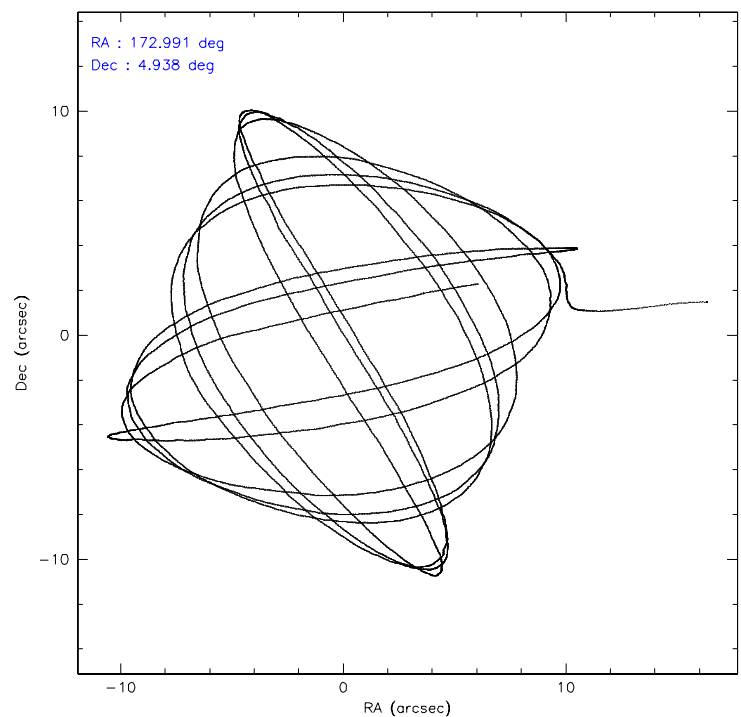
	ccd 1	ccd 2	ccd 3	ccd 6	ccd 7	ccd 8
level 1 events	39196	39784	40901	41215	55618	51404
rejected events	33672	34788	35915	36111	29281	40507
rejected %	85%	87%	87%	87%	52%	78%

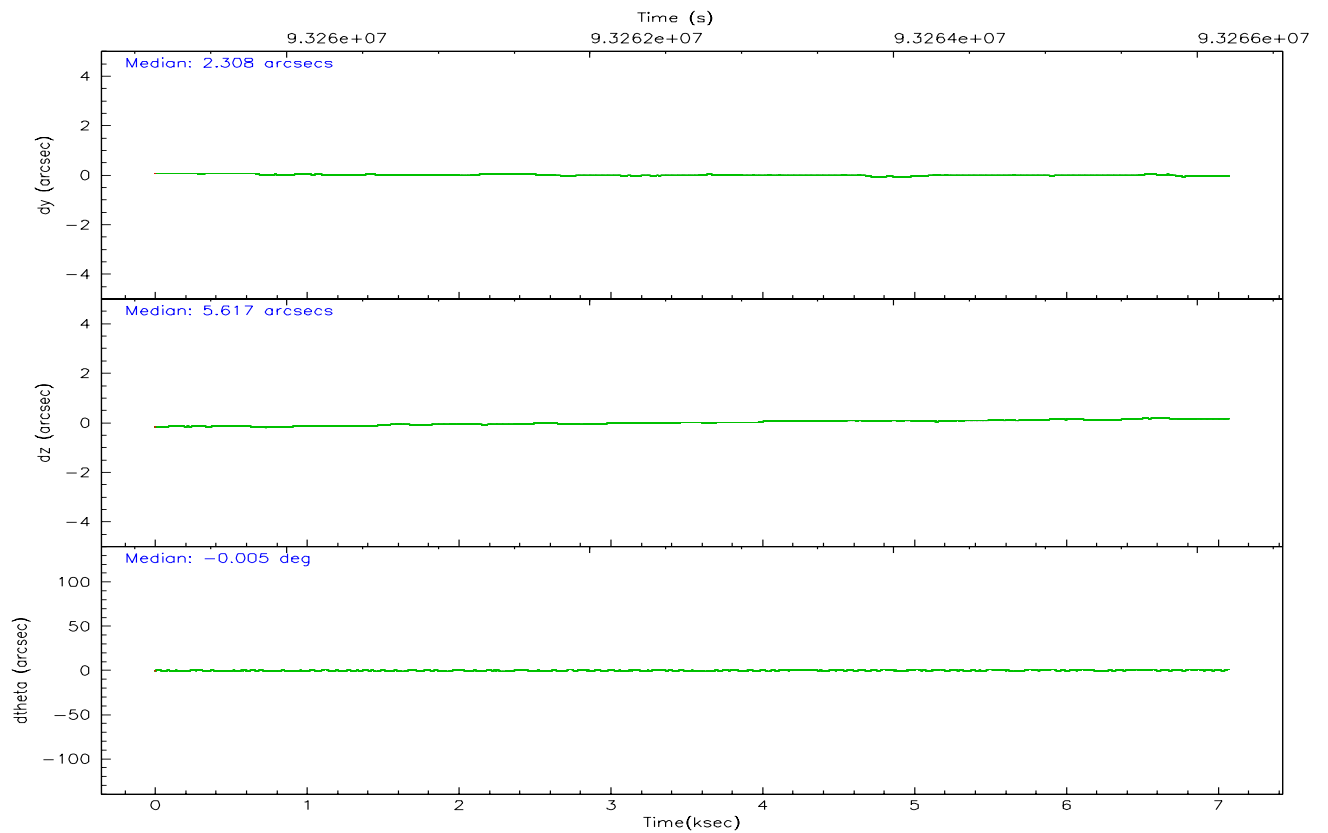
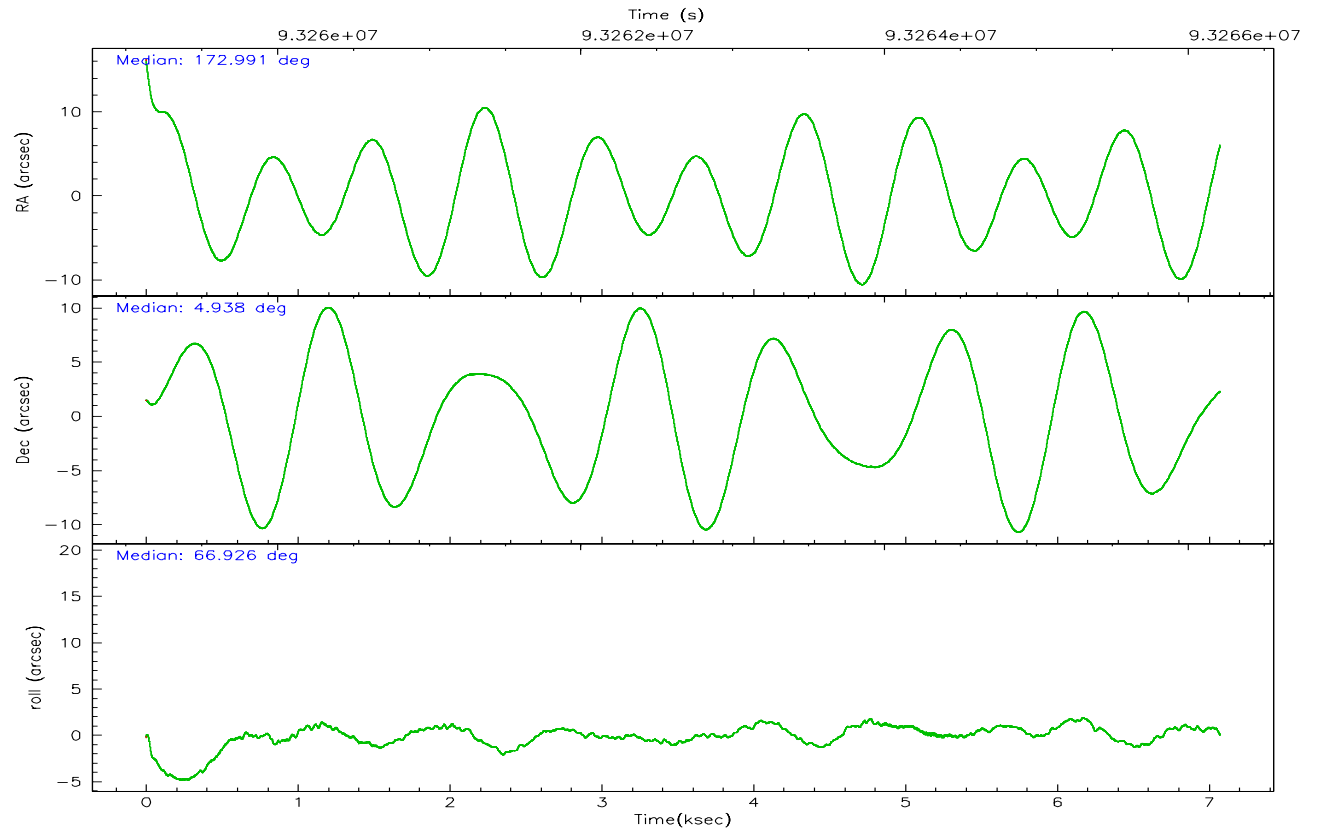
	ccd 1	ccd 2	ccd 3	ccd 6	ccd 7	ccd 8
grade 0 events	2473	2390	2239	2191	3071	3753
	6%	6%	5%	5%	5%	7%
grade 1 events	21	30	16	13	48	33
	0%	0%	0%	0%	0%	0%
grade 2 events	1046	982	1001	1038	5175	2330
	2%	2%	2%	2%	9%	4%
grade 3 events	501	423	496	466	2376	1111
	1%	1%	1%	1%	4%	2%
grade 4 events	544	422	428	441	2335	961
	1%	1%	1%	1%	4%	1%
grade 5 events	1567	1344	1498	1703	4911	2131
	3%	3%	3%	4%	8%	4%
grade 6 events	968	780	830	972	13405	2747
	2%	1%	2%	2%	24%	5%
grade 7 events	32076	33413	34393	34391	24297	38338
	81%	83%	84%	83%	43%	74%

2.2 Compared Parameters

Parameter	Planned	Actual	Parameter	Planned	Actual
Instrument	ACIS	ACIS	Obspar format version number	6	6
Detector	ACIS-123678	ACIS-123678	Obspar file type	PREDICTED	ACTUAL
Grating	NONE	NONE	Obspar update status	NONE	UPDATED
Data mode	FAINT	FAINT	Number of optional ACIS chips dropped	0	0
Observation mode	POINTING	POINTING	On-chip summing requested	N	N
Pointing RA	172.994394	172.9908663331341	Subarray requested	NONE	NONE
Pointing Dec	4.911382	4.9385071292506	Alternating exposures requested	N	N
Pointing Roll	66.775537	66.932475421386	Primary exposure time	3.200000	3.2
SIM focus pos (mm)	-0.684267	-0.6828225247311905			
SIM defocus (mm)	0	0.001444936568705701			
SIM translation stage pos (mm)	-190.132523	-190.1400660498719			
SIM translation stage offset (mm)	0	0.00754346686406393			
Observation start time	93259409.184000	93258401.808818			
Observation start date	2000-12-15T09:22:25	2000-12-15T09:06:41			
Observation end time	93266209.184000	93267302.396659			
Observation end date	2000-12-15T11:15:45	2000-12-15T11:35:02			
Read mode	TIMED	TIMED			

2.3 Aspect



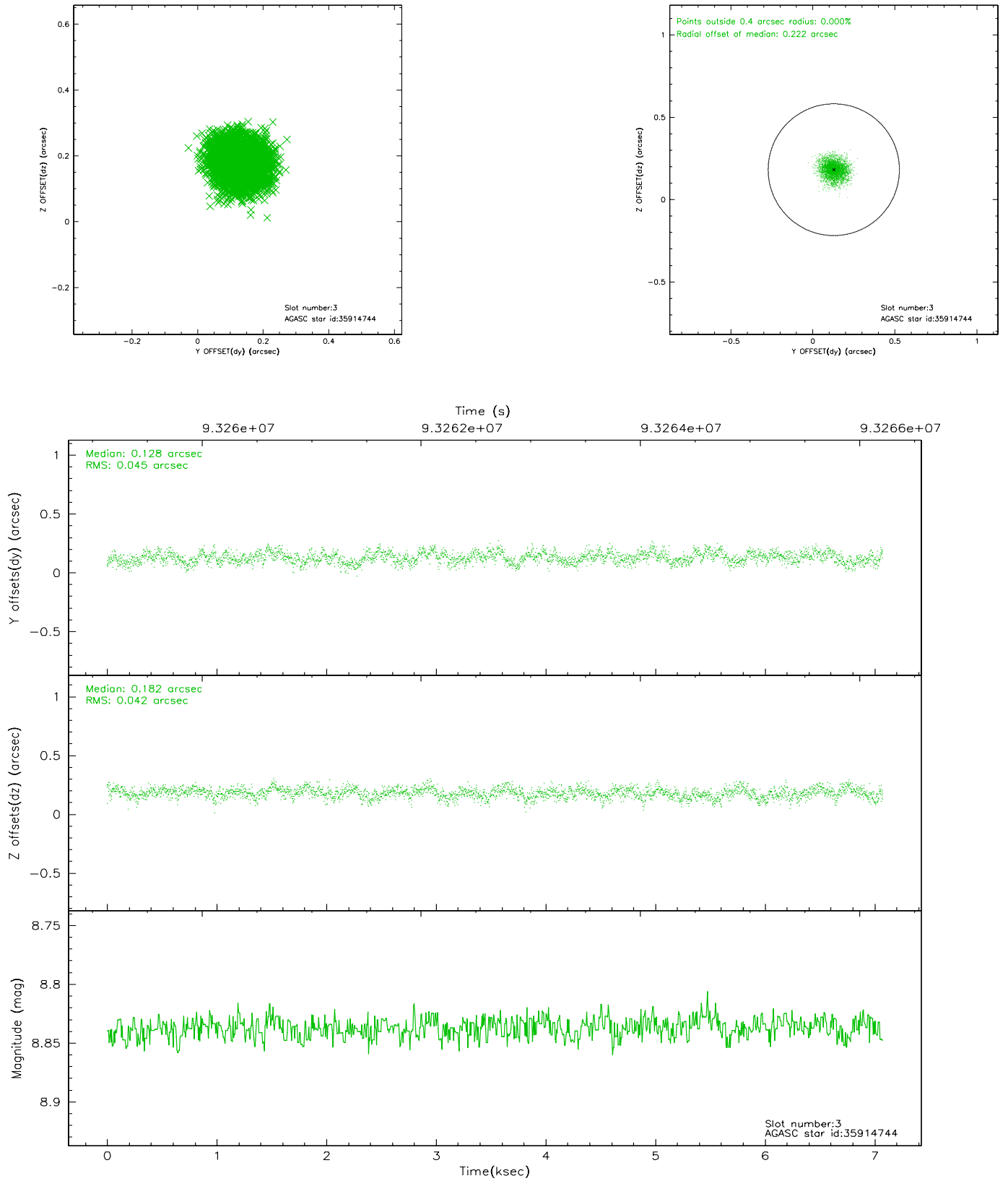


Slot Statistics

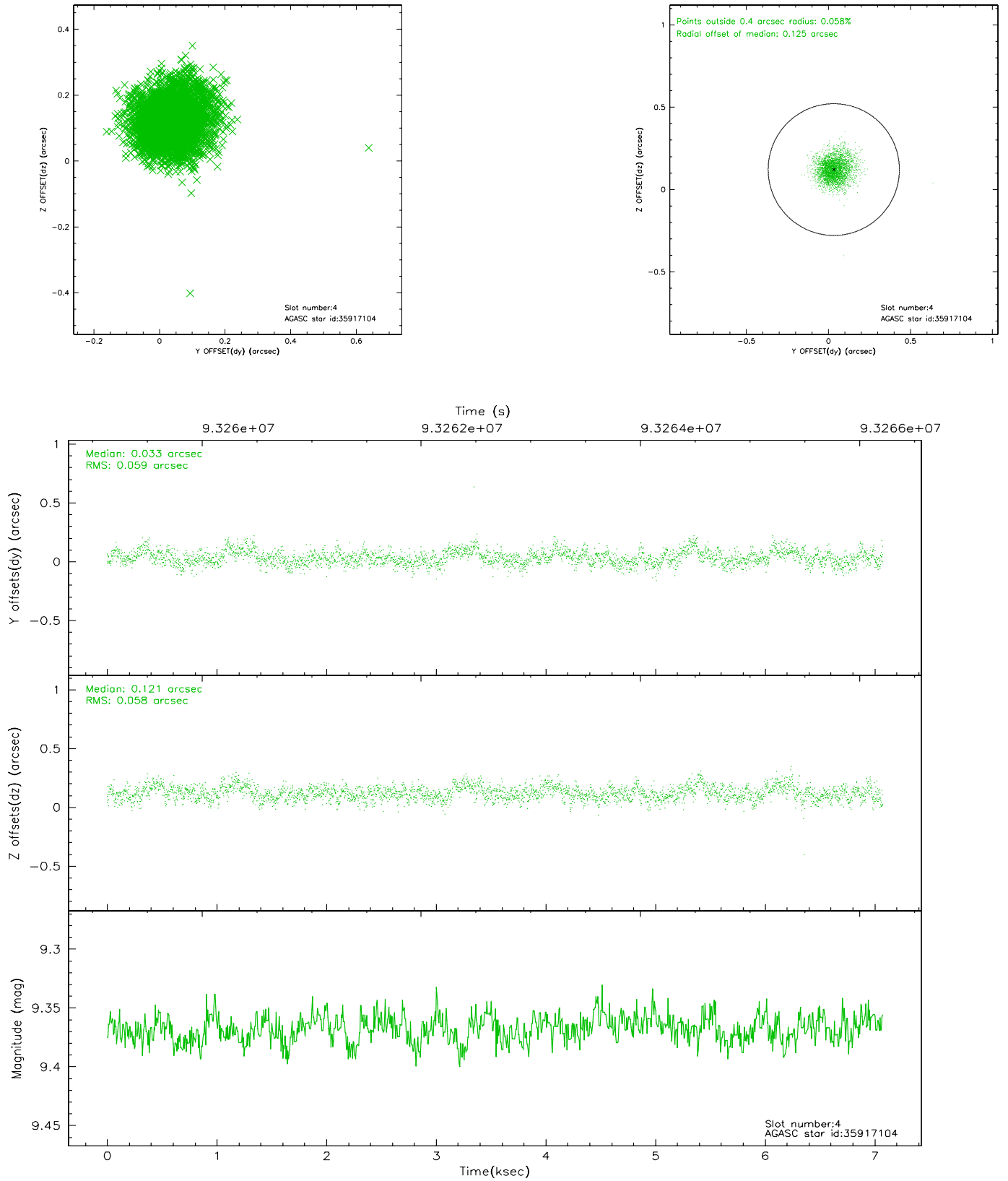
slot	status	id	mag	n_pts	med_dy	med_dz	dr1	dr2	ra	dec	mean_y	mean_z
0	FID	ACIS-S-2	7.12	1726	-0.035	0.019	0.007	0.011	0.000000	0.000000	-754.94	-1726.75
1	FID	ACIS-S-4	7.21	1726	-0.044	0.012	0.005	0.008	0.000000	0.000000	2157.93	180.94
2	FID	ACIS-S-5	7.24	1726	0.048	-0.022	0.006	0.011	0.000000	0.000000	-1806.68	175.43
3	GUIDE	35914744	8.84	3450	0.128	0.182	0.066	0.105	172.920503	4.544333	-1317.47	-278.06
4	GUIDE	35917104	9.37	3450	0.033	0.121	0.087	0.143	173.226652	4.871456	197.51	-822.85
5	GUIDE	35919320	9.32	3447	0.163	0.229	0.086	0.136	173.353240	4.134167	-2061.23	-2288.33
6	GUIDE	36308464	9.93	3449	-0.238	-0.215	0.127	0.199	172.623436	5.366324	981.34	1866.37
7	GUIDE	35398568	9.92	3447	-0.076	-0.312	0.135	0.219	172.451669	5.332070	626.58	2384.85

2.4 Star Slots

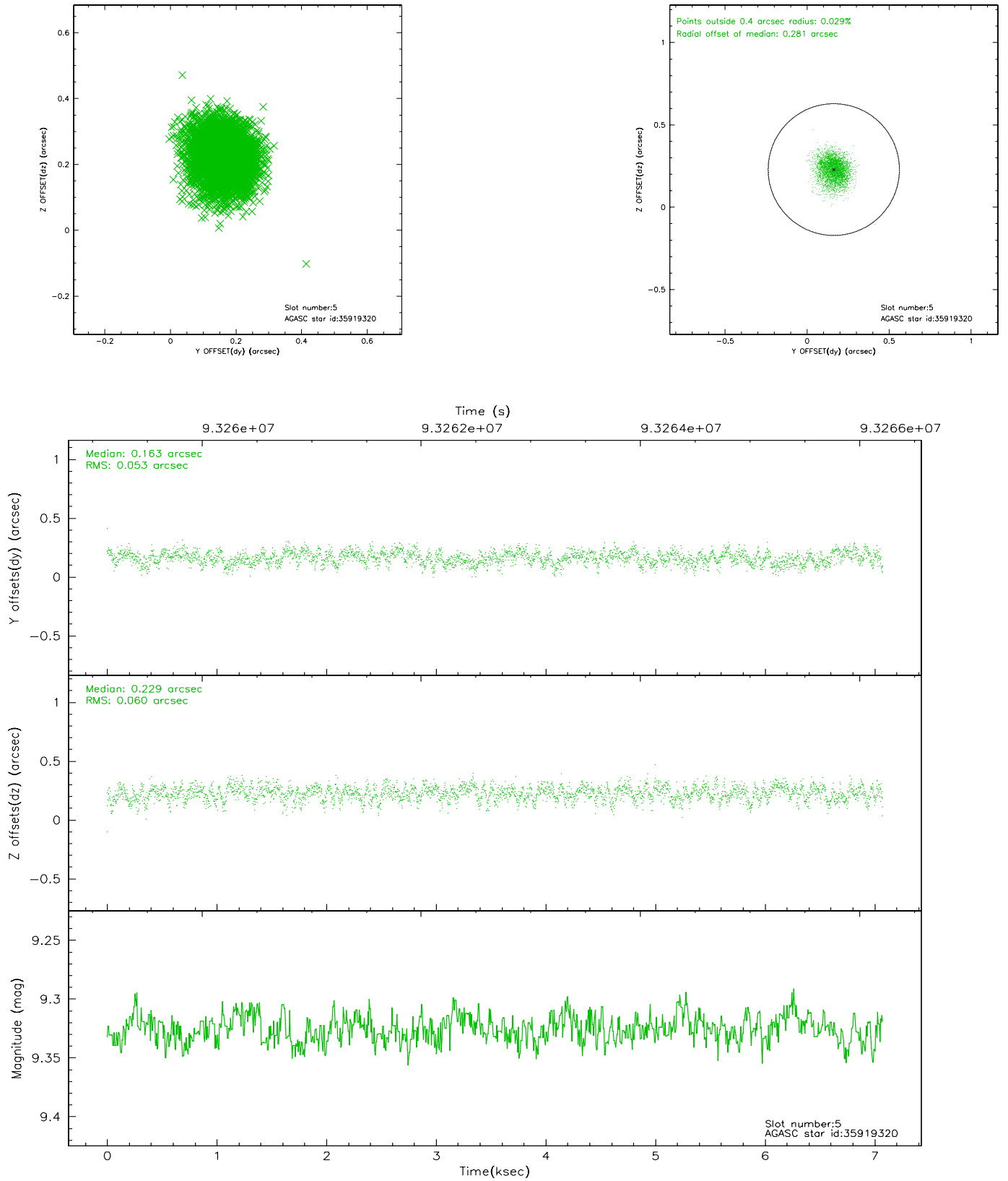
2.4.1 Slot 3



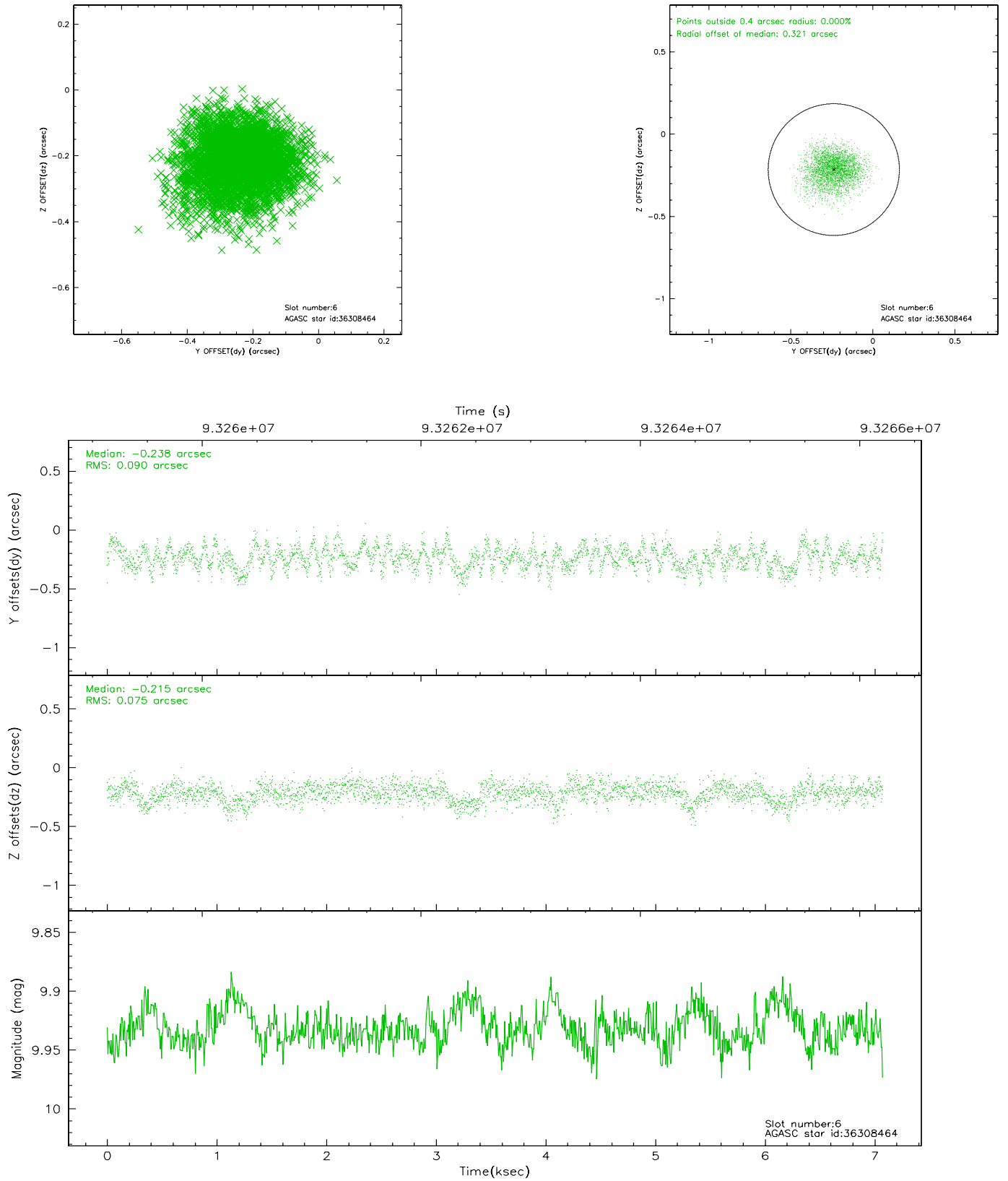
2.4.2 Slot 4



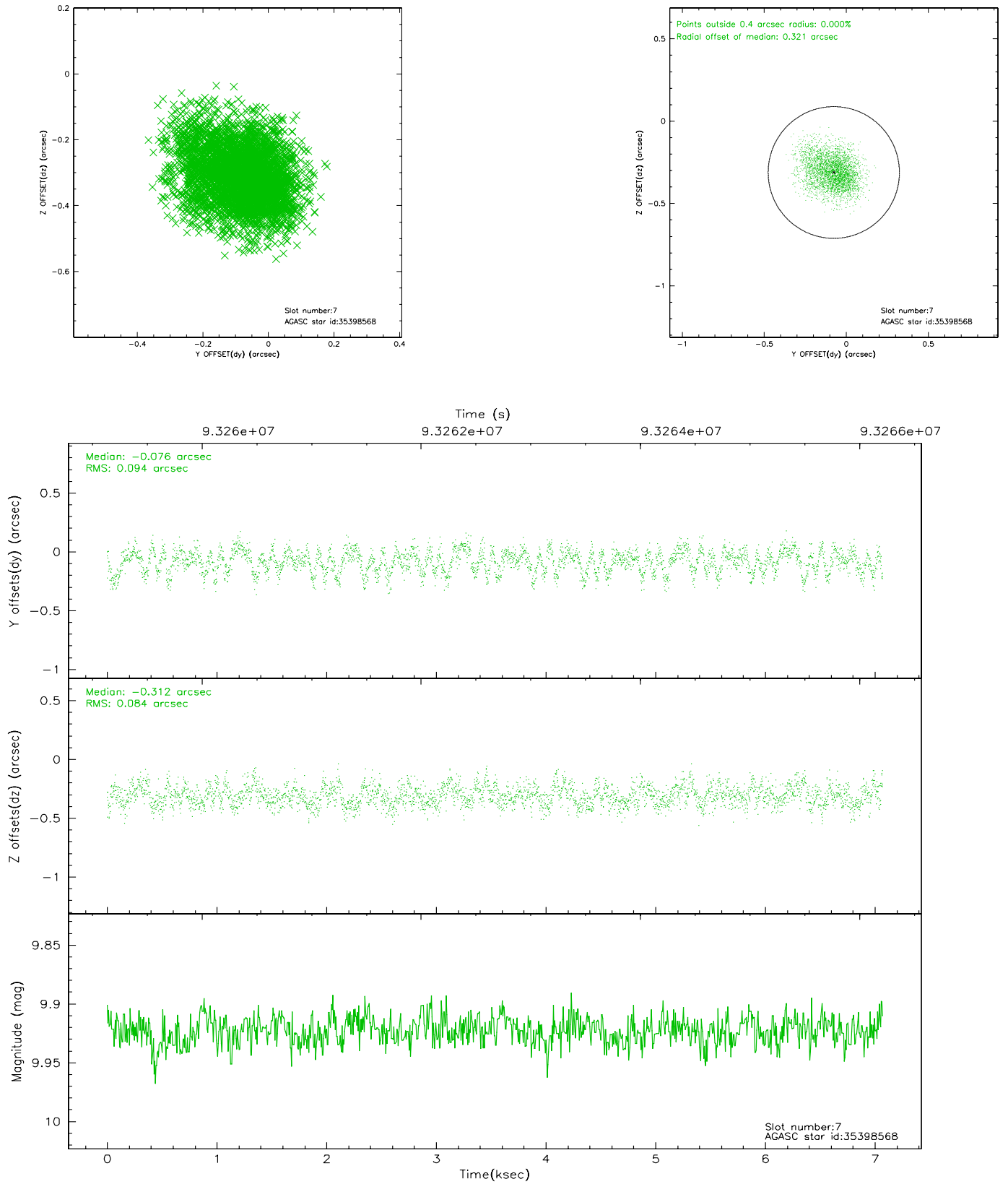
2.4.3 Slot 5



2.4.4 Slot 6

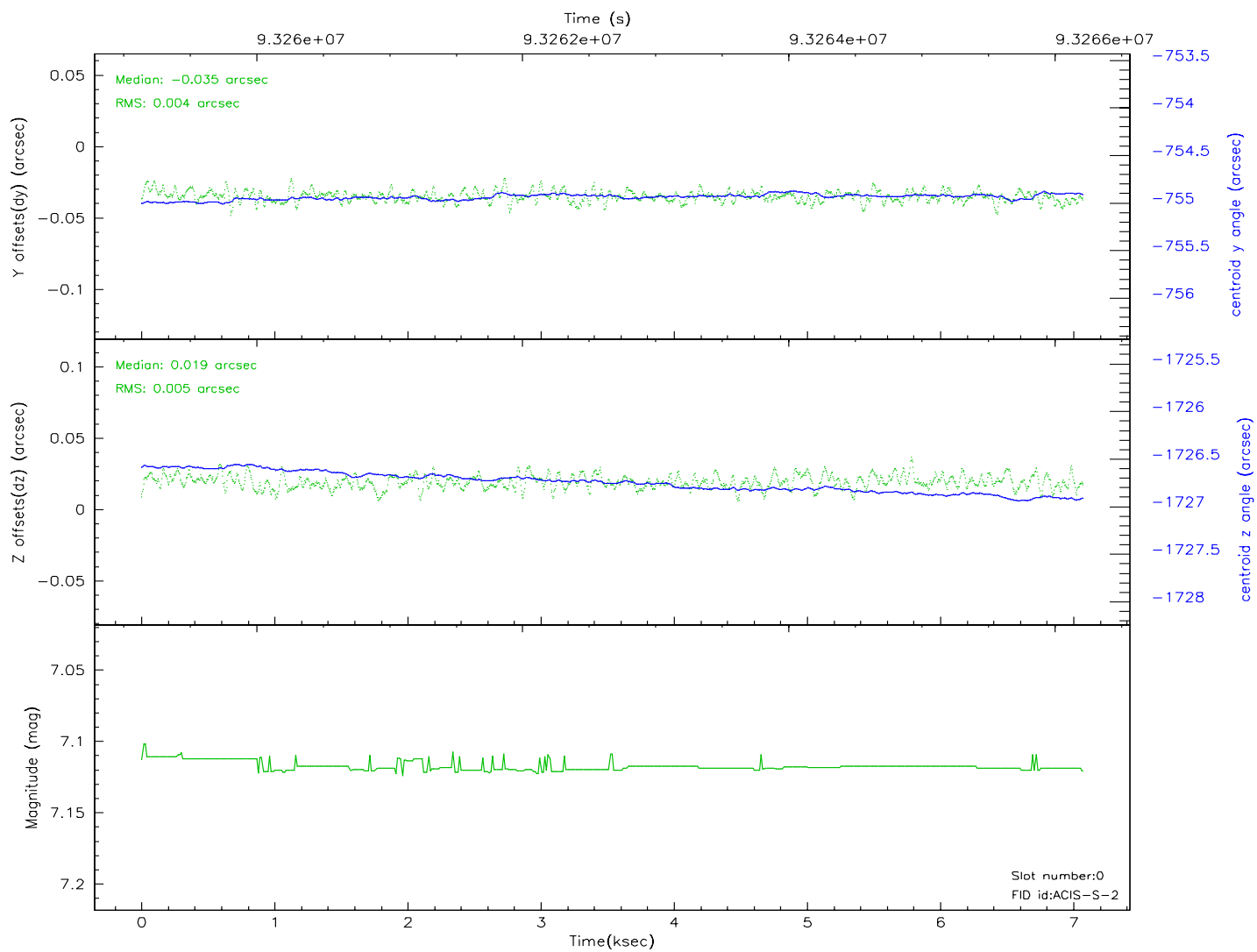
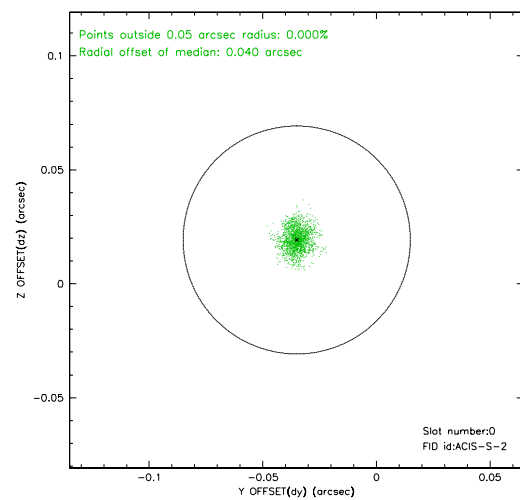
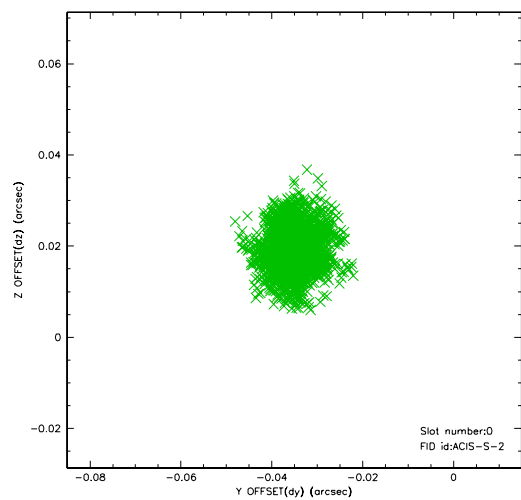


2.4.5 Slot 7

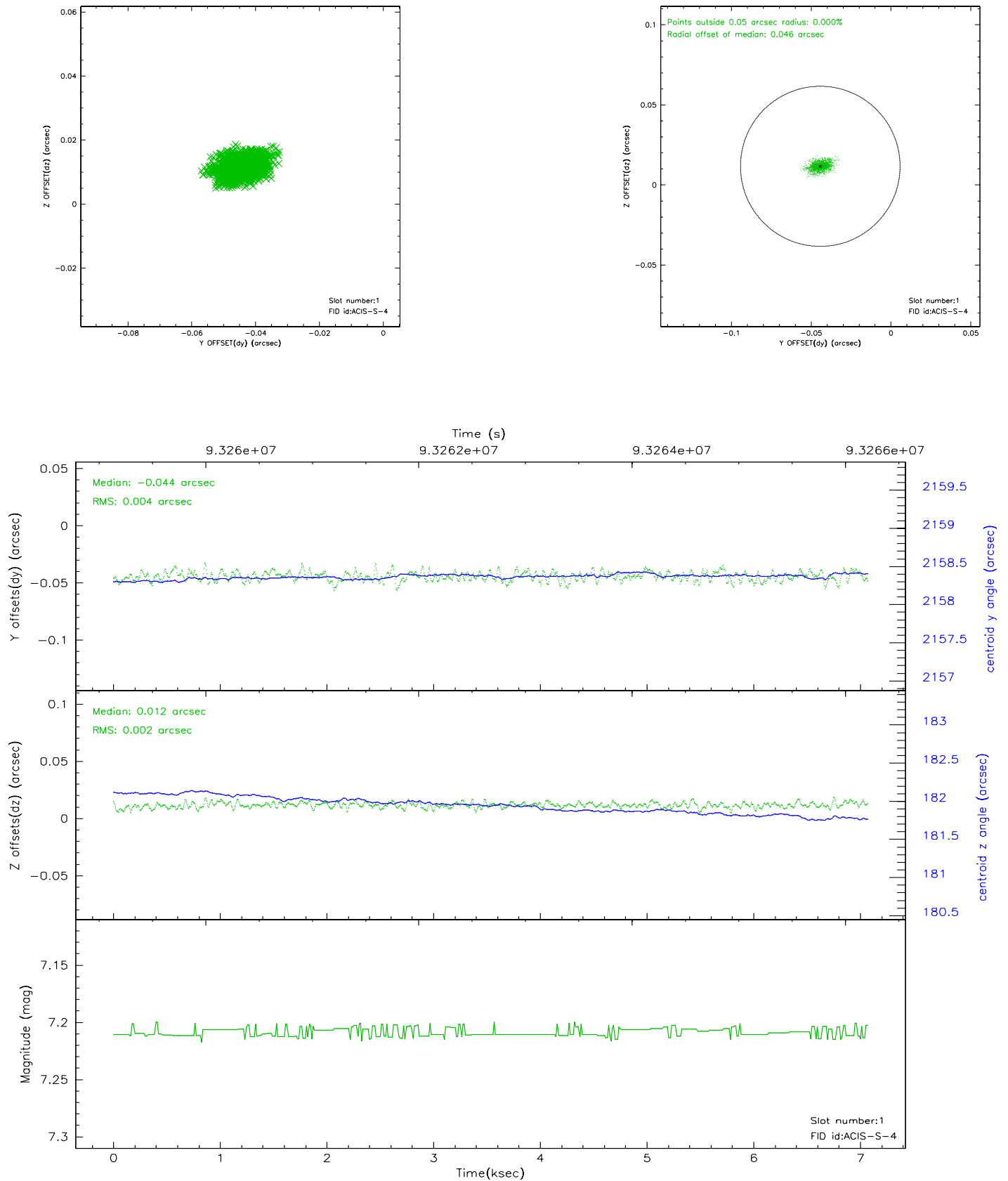


2.5 FID Slots

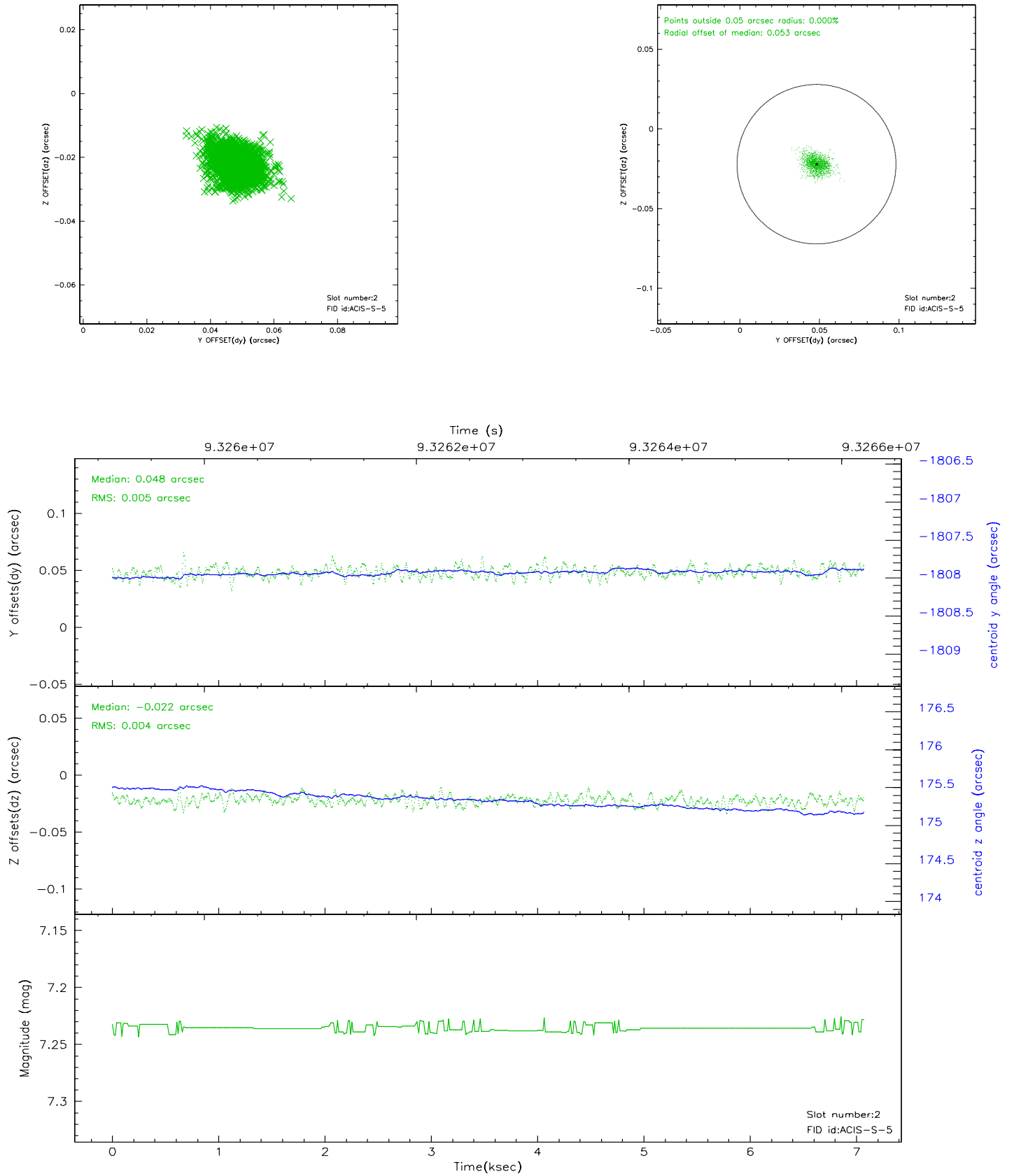
2.5.1 Slot 0



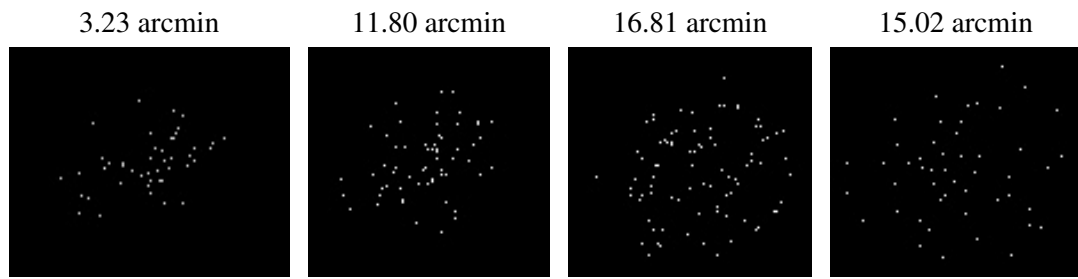
2.5.2 Slot 1



2.5.3 Slot 2



3 Point Sources



A Summary

A.1 Status

V&V Scientist	Jen Lauer
V&V Date (YYYY-MM-DD)	2007.07.13
V&V Edition	1
V&V Disposition and Status	OK
V&V Charge Time	6.755

A.2 Comments

Monitor constraint met, follows obs423 by 227 days.