

V&V Reference Report

L2 ASCDS Version : 7.6.10

Observation 377 - L2 Version 001
Chandra X-Ray Center

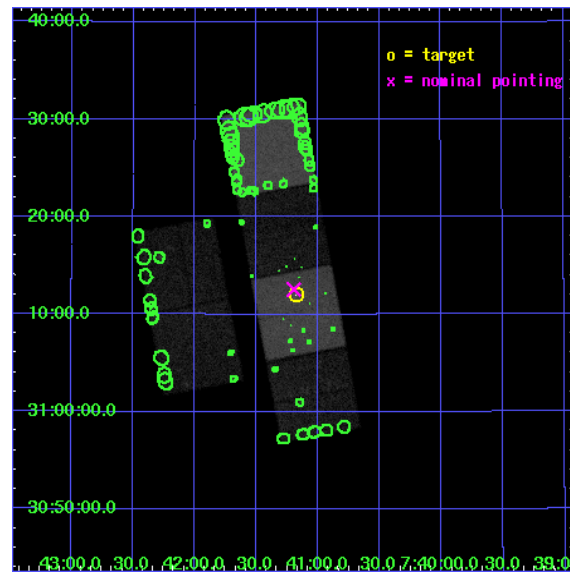
L2 Processing Date : Jun 12 2007

Contents

1	Front	2
2	OBI	3
2.1	OBI	3
2.1.1	Images	3
2.1.2	Bias	3
2.1.3	Parameters	4
2.1.4	Events	4
2.2	Compared Parameters	5
2.3	Aspect	6
2.4	Star Slots	9
2.4.1	Slot 3	9
2.4.2	Slot 4	10
2.4.3	Slot 5	11
2.4.4	Slot 6	12
2.5	FID Slots	13
2.5.1	Slot 0	13
2.5.2	Slot 1	14
2.5.3	Slot 2	15
3	Point Sources	16
A	Summary	17
A.1	Status	17
A.2	Comments	17

1 Front

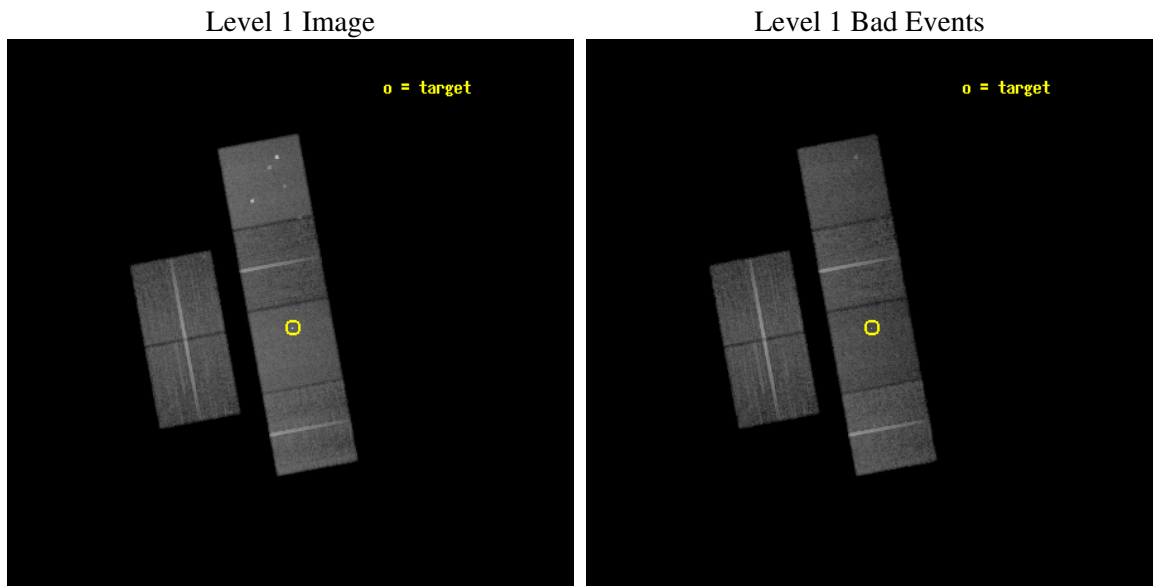
seq_num	700049
obs_id	377
title	EXTENDED EMISSION AROUND A GIGAHERTZ PEAKED RADIO SOURCE
observer	Dr. Stephen Murray
object	B2 0738+313
dtcycle	0
cycle	P
ra_targ	115.294583
dec_targ	31.200111
ra_nom	115.29871068358
dec_nom	31.209359606818
roll_nom	79.494052402113
revision	4
ontime	27952.000026032
livetime	27598.054971029
ontime2	27952.000026032
ontime3	27952.000026032
ontime5	27952.000026032
ontime6	27952.000026032
ontime7	27952.000026032
ontime8	27952.000026032
l2events	257795



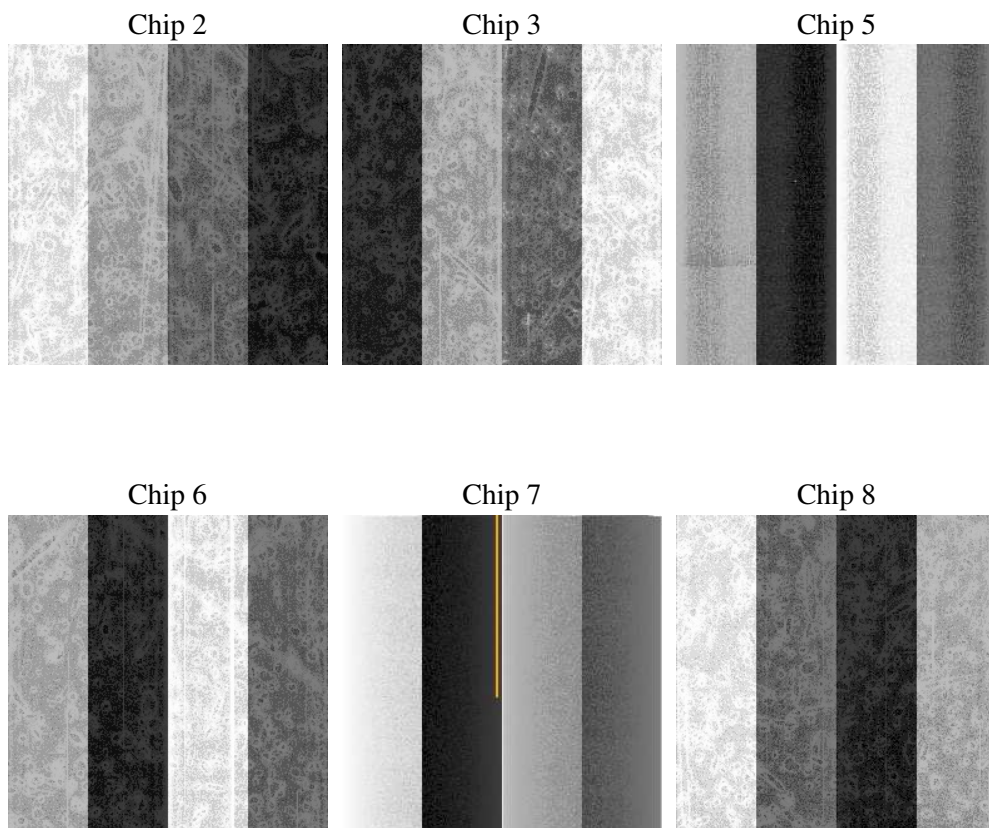
2 OBI

2.1 OBI

2.1.1 Images



2.1.2 Bias



2.1.3 Parameters

obi_num	0
ascdsver	7.6.10
caldsver	3.4.0
date	2007-06-12T15:49:21
revision	4

sched_exp_time	28000.000000
ontime	27952.000026032
ontime2	27952.000026032
ontime3	27952.000026032
ontime5	27952.000026032
ontime6	27952.000026032
ontime7	27952.000026032
ontime8	27952.000026032
l1events	1182125

2.1.4 Events

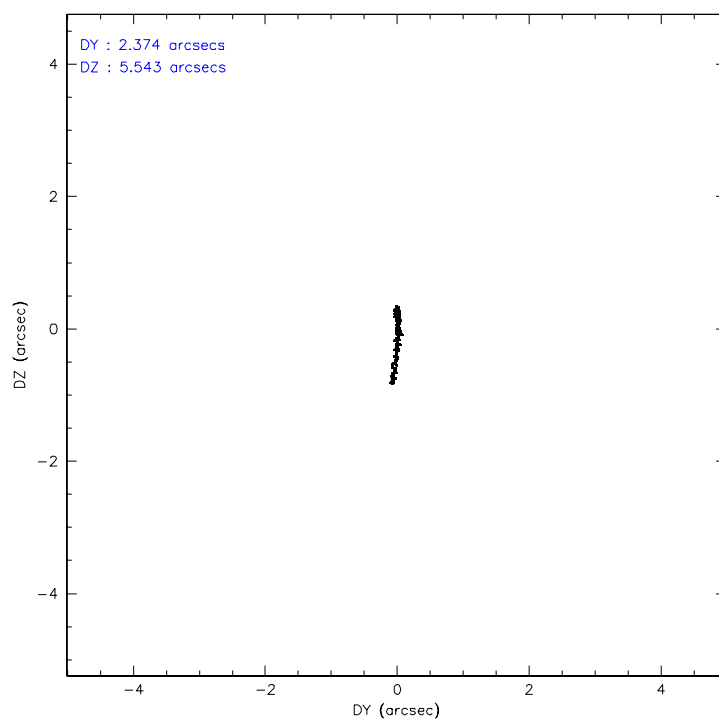
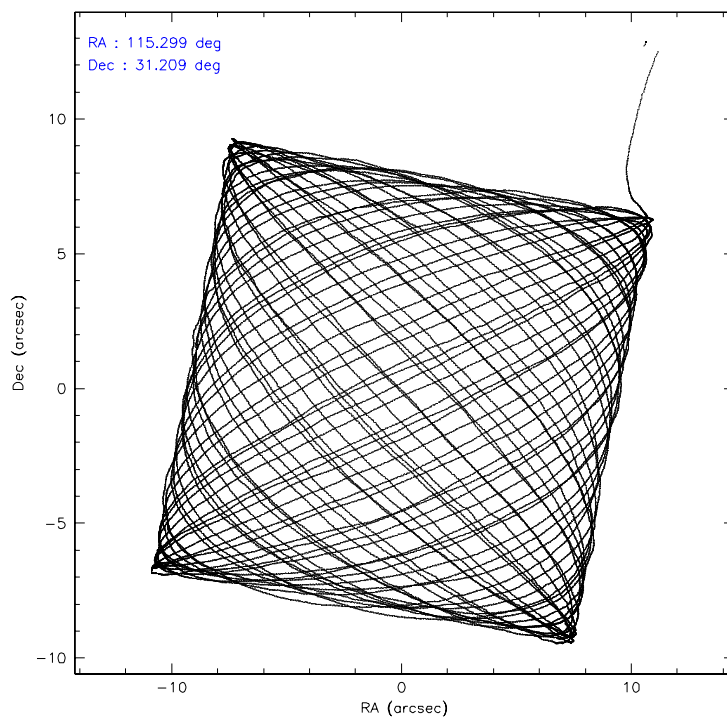
	ccd 2	ccd 3	ccd 5	ccd 6	ccd 7	ccd 8
level 1 events	174538	167046	237779	171269	216553	214940
rejected events	155337	148233	127601	151928	124303	173745
rejected %	88%	88%	53%	88%	57%	80%

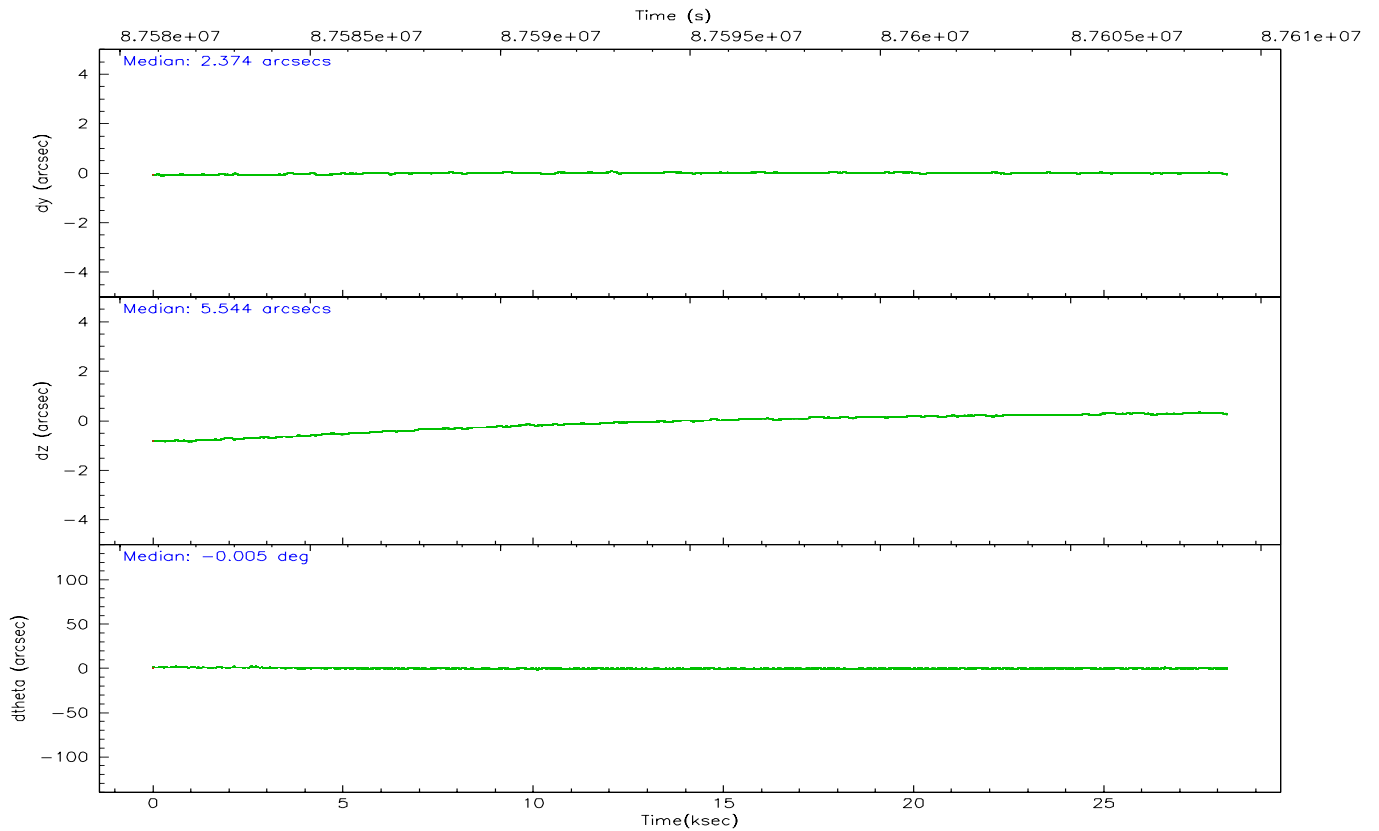
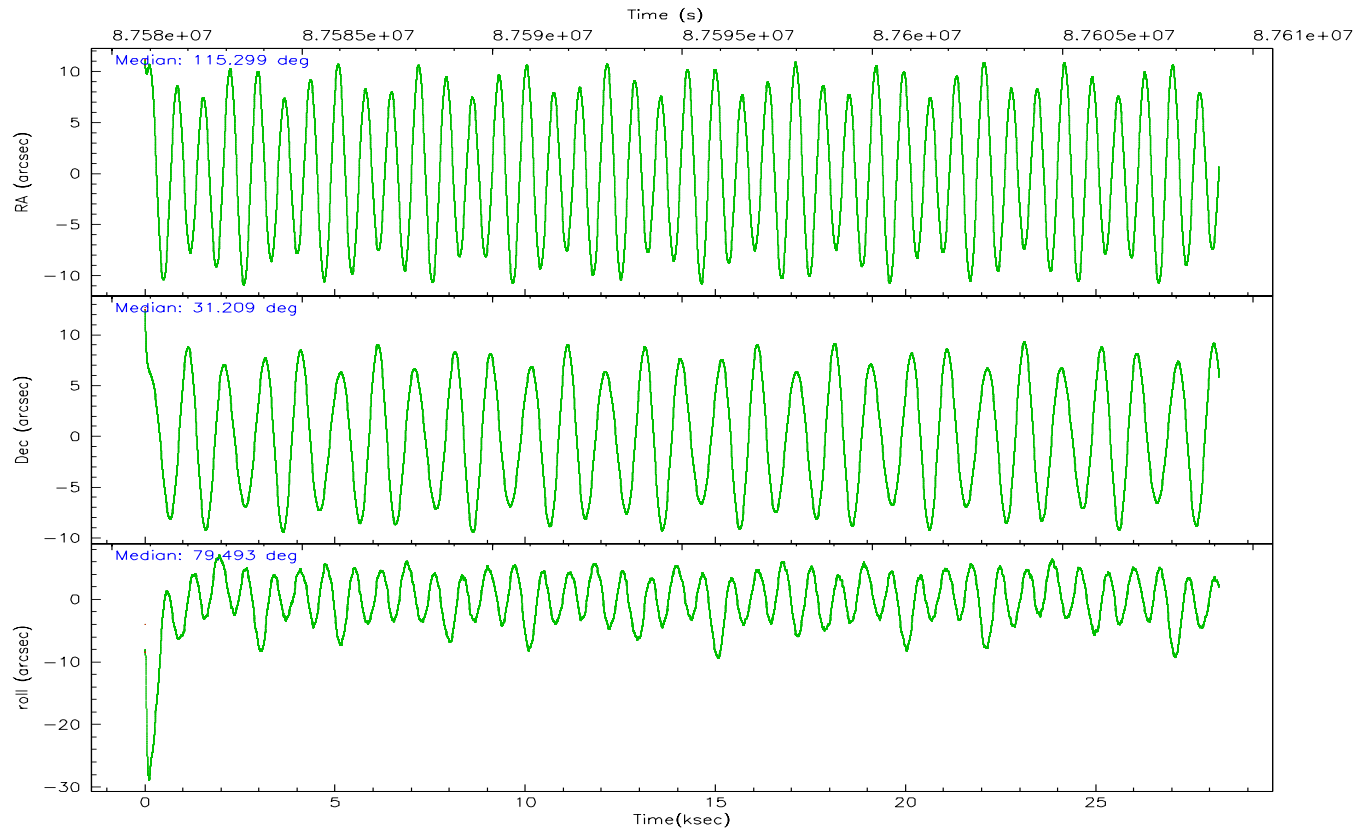
	ccd 2	ccd 3	ccd 5	ccd 6	ccd 7	ccd 8
grade 0 events	8229	8118	14840	7889	9460	12930
	4%	4%	6%	4%	4%	6%
grade 1 events	81	76	492	78	256	121
	0%	0%	0%	0%	0%	0%
grade 2 events	4072	3650	31362	3833	17932	8972
	2%	2%	13%	2%	8%	4%
grade 3 events	1834	1909	4651	1946	8538	4409
	1%	1%	1%	1%	3%	2%
grade 4 events	1822	1903	4469	1901	8614	4166
	1%	1%	1%	1%	3%	1%
grade 5 events	5735	6112	17843	7016	20600	8751
	3%	3%	7%	4%	9%	4%
grade 6 events	3249	3236	54878	3774	47728	10741
	1%	1%	23%	2%	22%	4%
grade 7 events	149516	142042	109244	144832	103425	164850
	85%	85%	45%	84%	47%	76%

2.2 Compared Parameters

Parameter	Planned	Actual	Parameter	Planned	Actual
Instrument	ACIS	ACIS	Obspar format version number	6	6
Detector	ACIS-235678	ACIS-235678	Obspar file type	PREDICTED	ACTUAL
Grating	NONE	NONE	Obspar update status	NONE	UPDATED
Data mode	FAINT	FAINT	Number of optional ACIS chips dropped	0	0
Observation mode	POINTING	POINTING	On-chip summing requested	N	N
Pointing RA	115.309584	115.2987106835783	Subarray requested	NONE	NONE
Pointing Dec	31.183622	31.20935960681806	Alternating exposures requested	N	N
Pointing Roll	79.331784	79.49405240211307	Primary exposure time	0.000000	3.2
SIM focus pos (mm)	-0.684267	-0.6828225247311905			
SIM defocus (mm)	0	0.001444936568705701			
SIM translation stage pos (mm)	-190.132523	-190.1425803651734			
SIM translation stage offset (mm)	0	0.01005778216563158			
Observation start time	87581121.184000	87580112.743072			
Observation start date	2000-10-10T16:04:17	2000-10-10T15:48:32			
Observation end time	87609121.184000	87609678.869188			
Observation end date	2000-10-10T23:50:57	2000-10-11T00:01:18			
Read mode	TIMED	TIMED			

2.3 Aspect



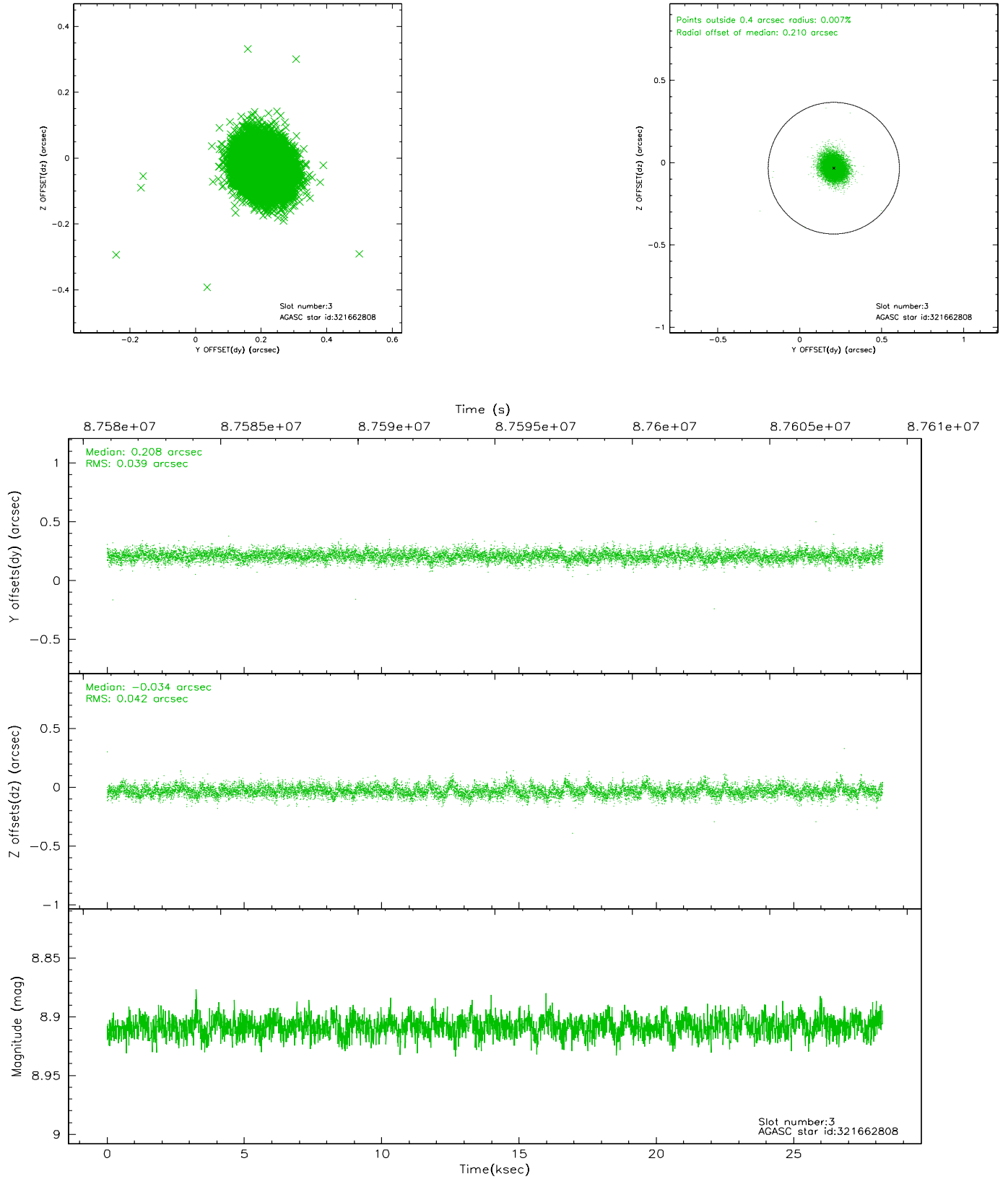


Slot Statistics

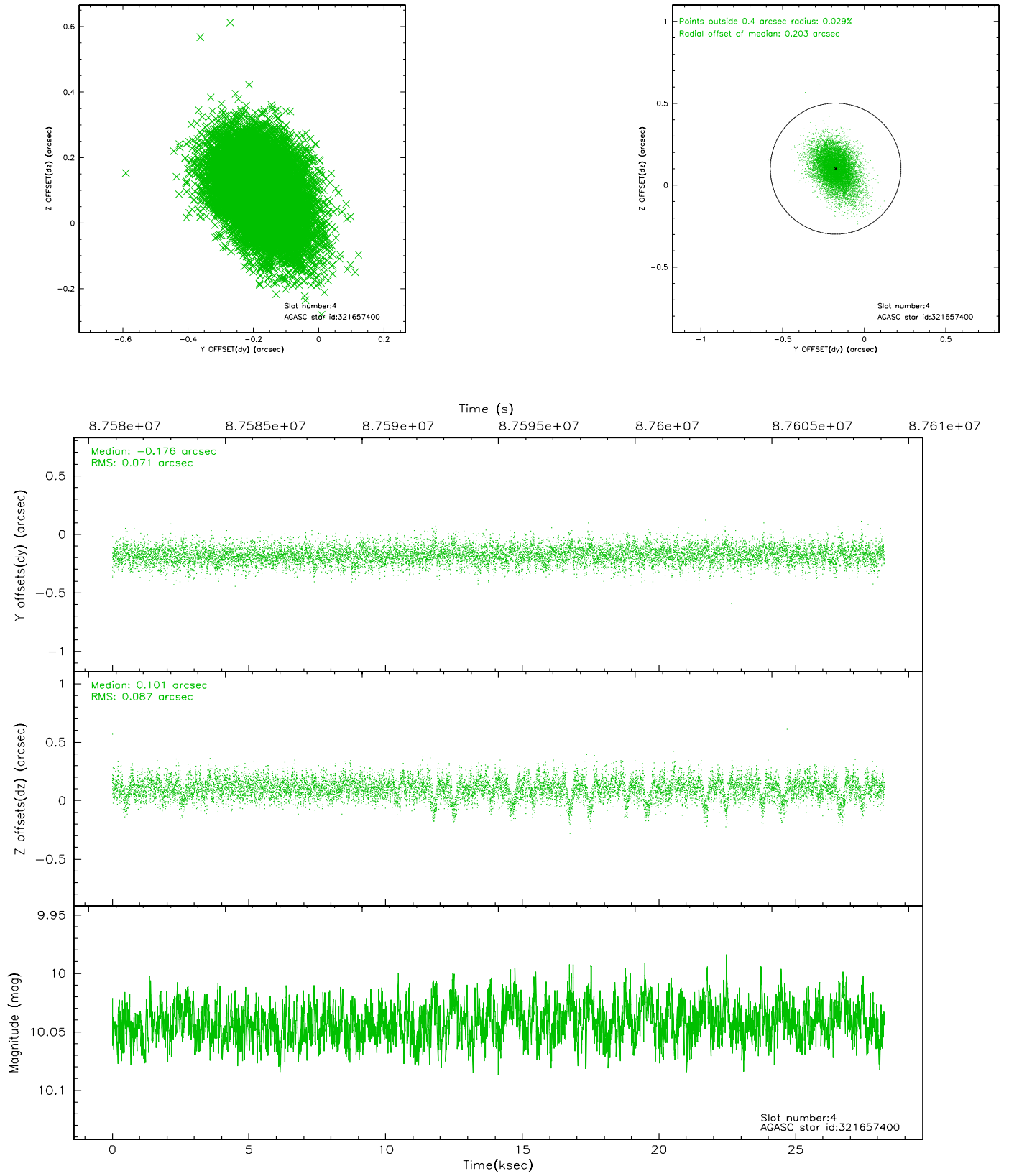
slot	status	id	mag	n_pts	med_dy	med_dz	dr1	dr2	ra	dec	mean_y	mean_z
0	FID	ACIS-S-2	7.11	6887	-0.032	0.016	0.008	0.014	0.000000	0.000000	-754.99	-1726.51
1	FID	ACIS-S-4	7.20	6889	-0.039	0.011	0.005	0.009	0.000000	0.000000	2158.20	181.93
2	FID	ACIS-S-5	7.24	6889	0.040	-0.018	0.008	0.014	0.000000	0.000000	-1807.68	175.60
3	GUIDE	321662808	8.91	13776	0.208	-0.034	0.060	0.099	115.327364	30.555402	-2211.27	-472.39
4	GUIDE	321657400	10.04	13768	-0.176	0.101	0.116	0.200	115.976752	31.630046	1964.55	-1710.47
5	GUIDE	321660408	9.11	13774	-0.021	-0.047	0.072	0.116	115.631265	31.237893	377.66	-936.26
6	GUIDE	321657600	9.35	13776	-0.010	-0.022	0.088	0.146	115.781018	31.243330	483.72	-1385.15
7	OMITTED		0.00	0	0.000	0.000	0.000	0.000	0.000000	0.000000	0.00	0.00

2.4 Star Slots

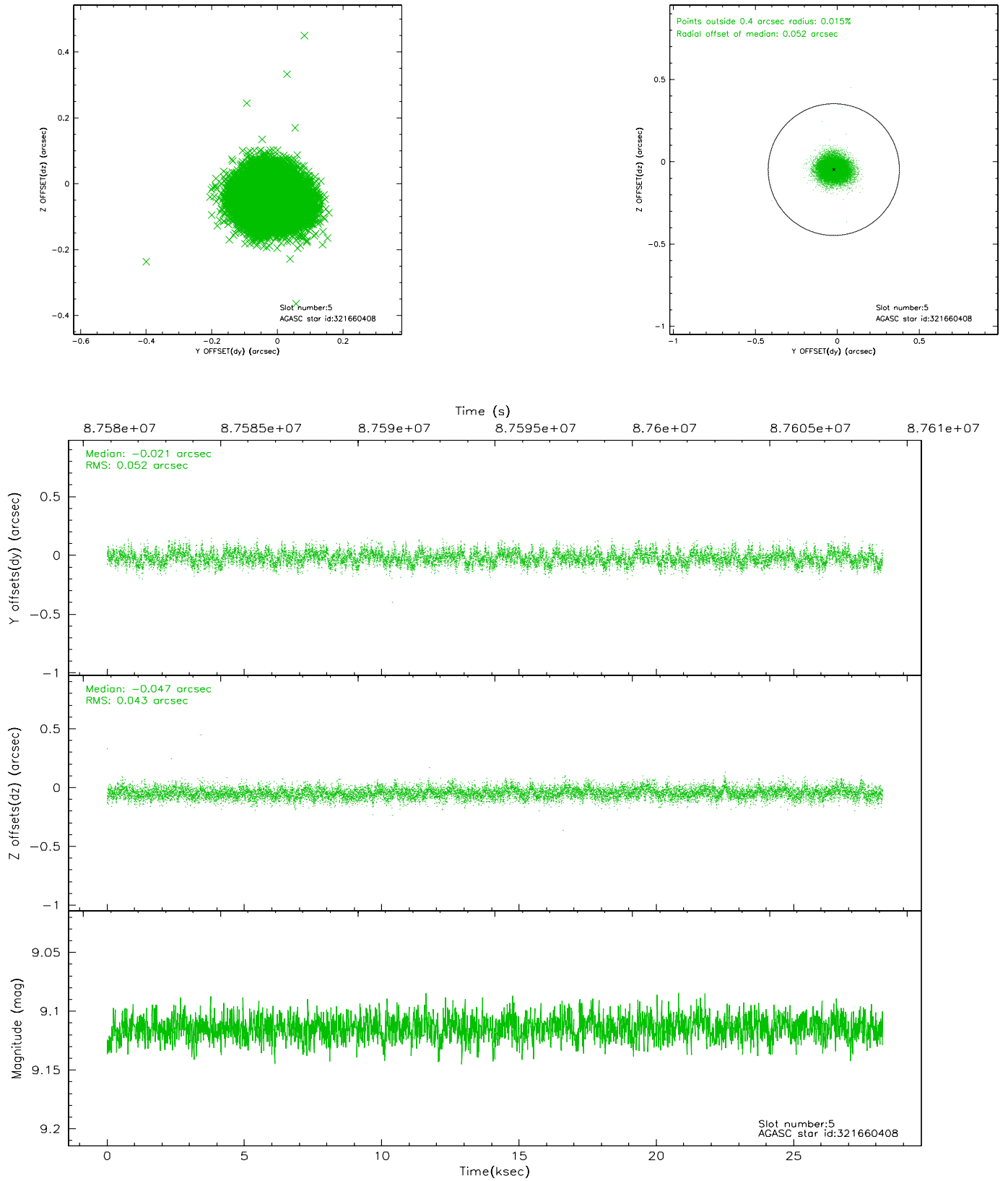
2.4.1 Slot 3



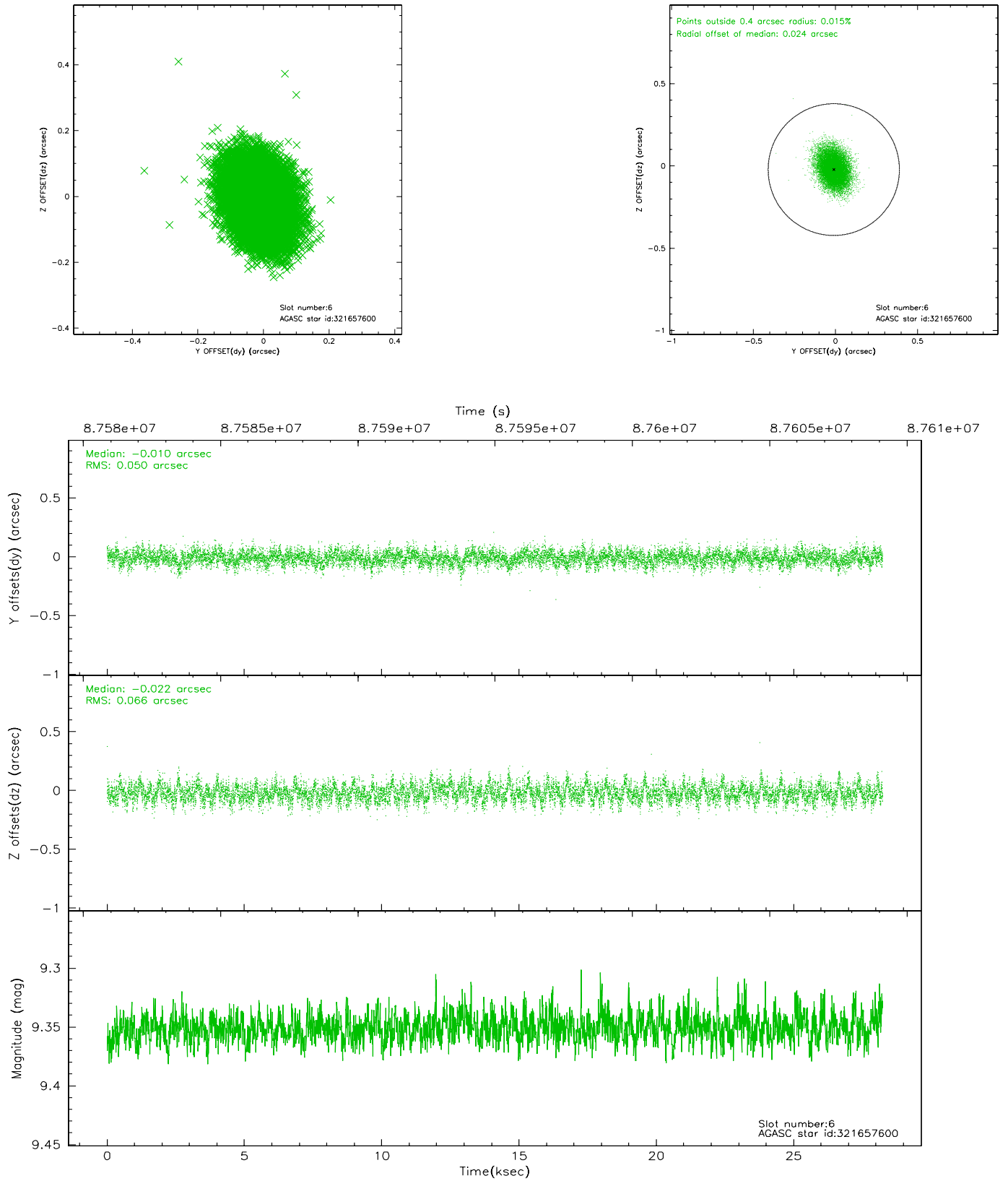
2.4.2 Slot 4



2.4.3 Slot 5

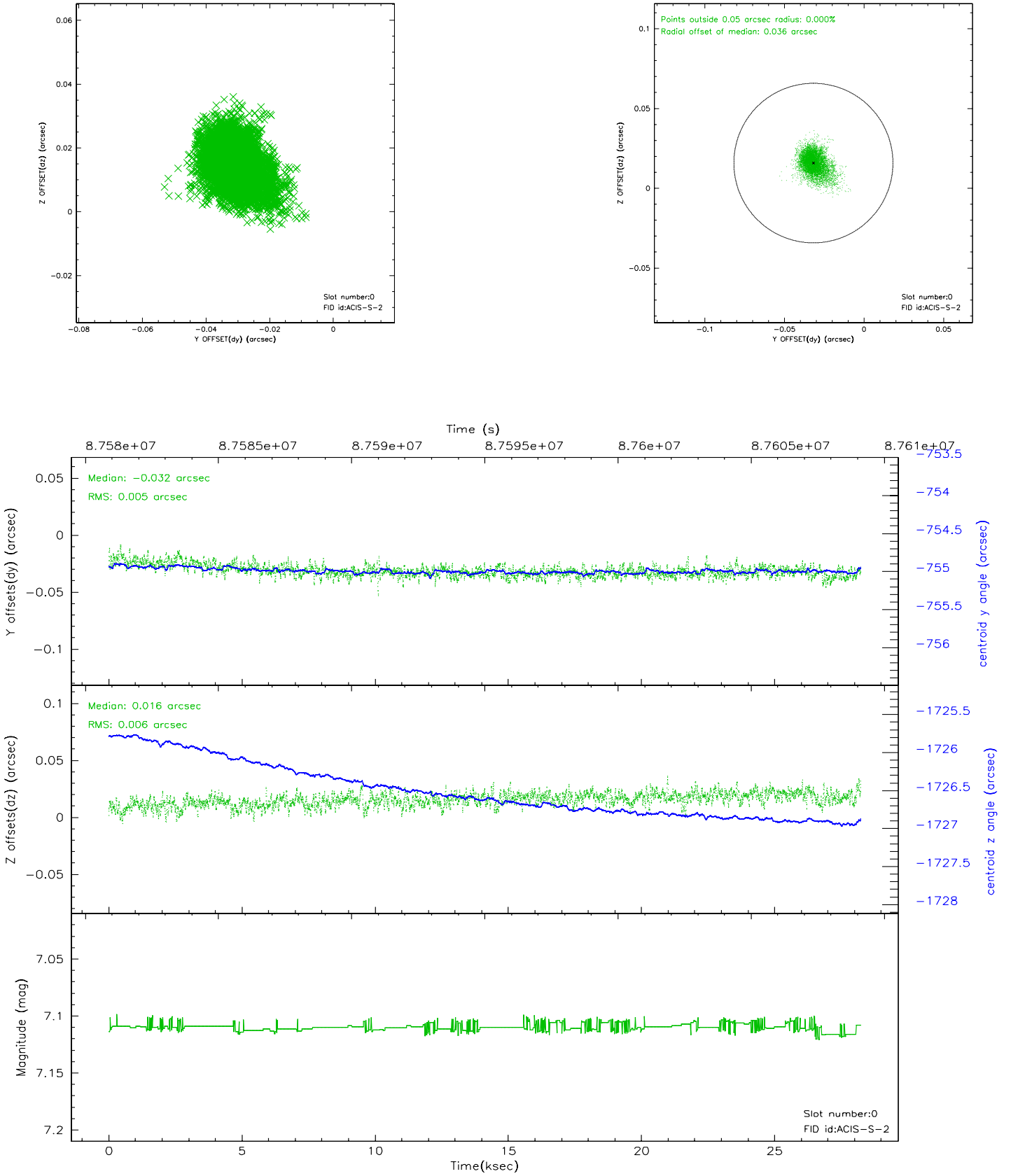


2.4.4 Slot 6

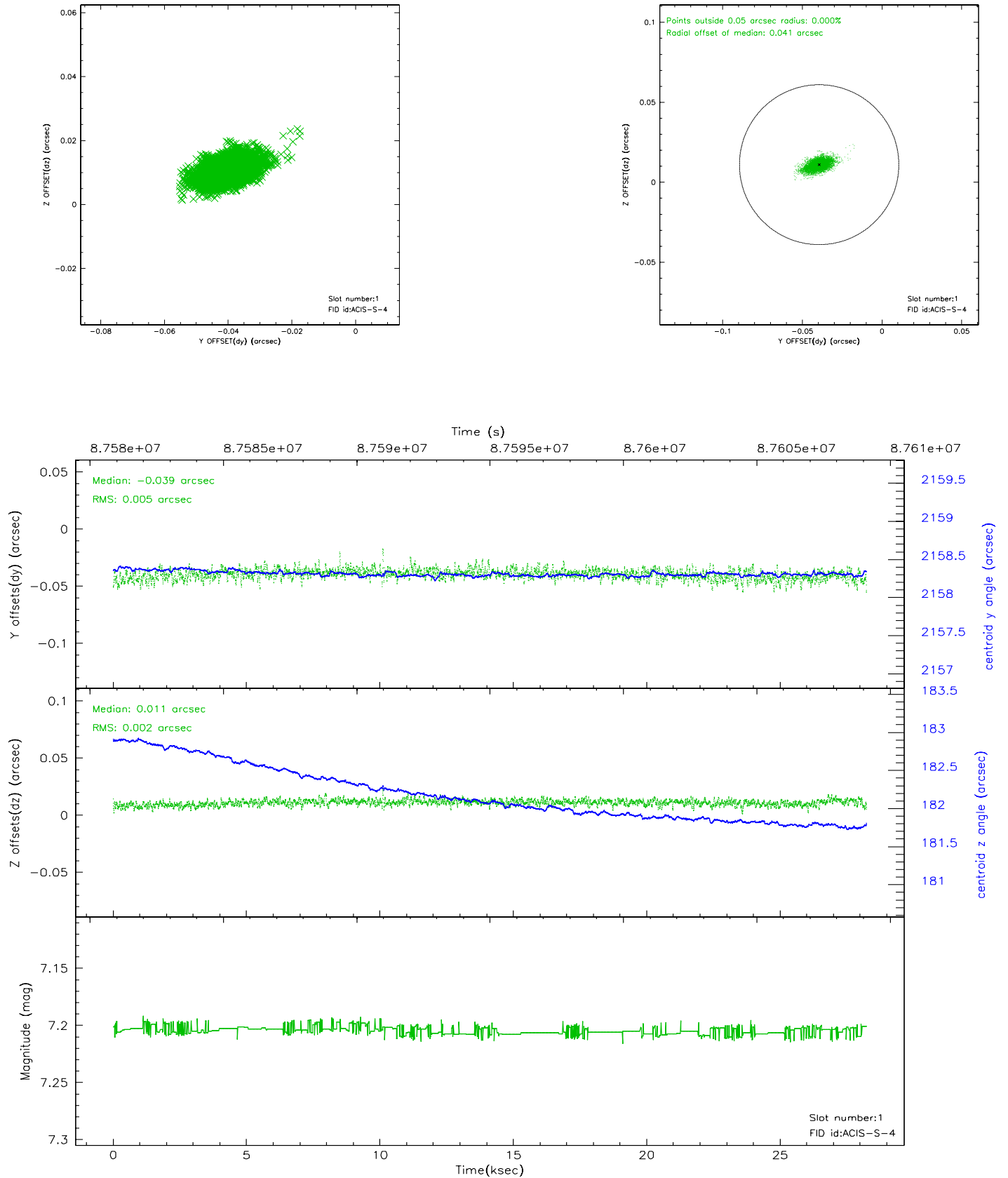


2.5 FID Slots

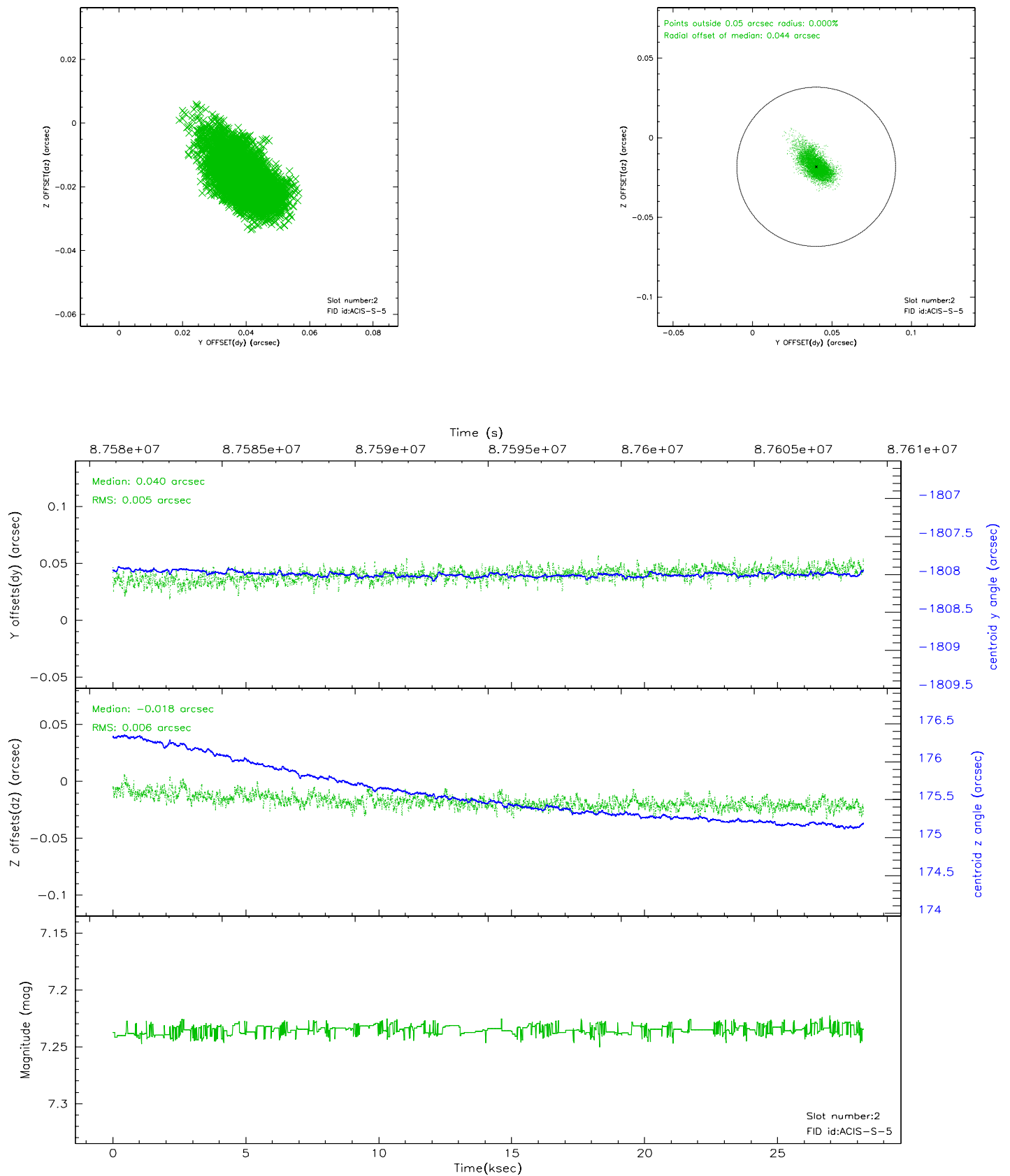
2.5.1 Slot 0



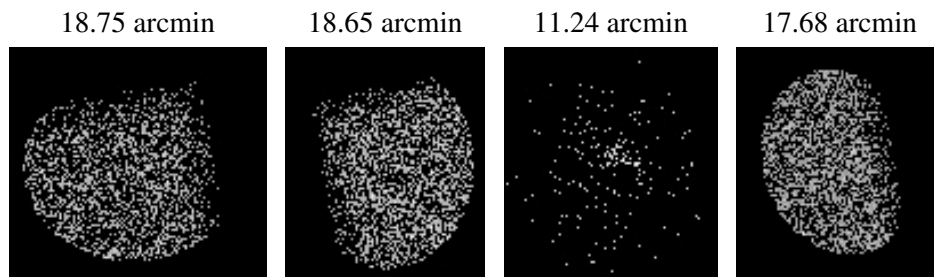
2.5.2 Slot 1



2.5.3 Slot 2



3 Point Sources



A Summary

A.1 Status

V&V Scientist	Jen Lauer
V&V Date (YYYY-MM-DD)	2010.10.01
V&V Edition	2
V&V Disposition and Status	OK
V&V Charge Time	28

A.2 Comments

The guide star in slot 7 was manually excluded from the processing due to poor data quality.