

V&V Reference Report

L2 ASCDS Version : 8.4.5

Observation 372 - L2 Version 6
Chandra X-Ray Center

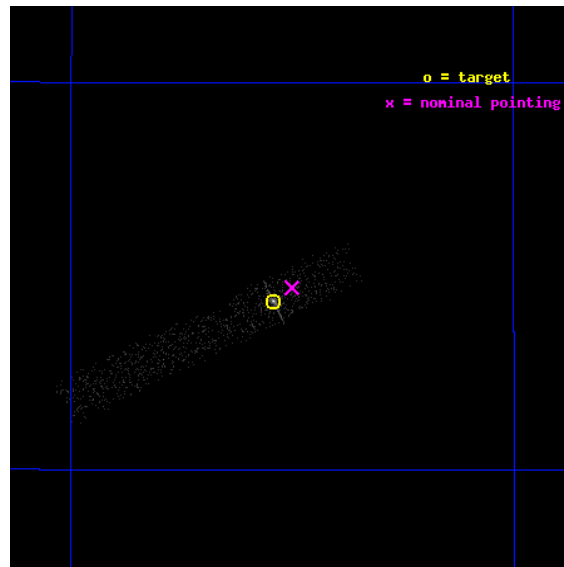
L2 Processing Date : Aug 24 2012

Contents

1	Front	2
2	OBI Primary	3
2.1	OBI	3
2.1.1	Images	3
2.1.2	Bias	3
2.1.3	Parameters	4
2.1.4	Events	4
2.2	Compared Parameters	5
2.3	Aspect	6
2.4	Star Slots	9
2.4.1	Slot 3	9
2.4.2	Slot 4	10
2.4.3	Slot 5	11
2.4.4	Slot 6	12
2.4.5	Slot 7	13
2.5	FID Slots	14
2.5.1	Slot 0	14
2.5.2	Slot 1	15
2.5.3	Slot 2	16
3	OBI Secondary	17
3.1	OBI	17
3.1.1	Images	17
3.1.2	Bias	17
3.1.3	Parameters	18
3.1.4	Events	18
A	Summary	19
A.1	Status	19
A.2	Comments	19

1 Front

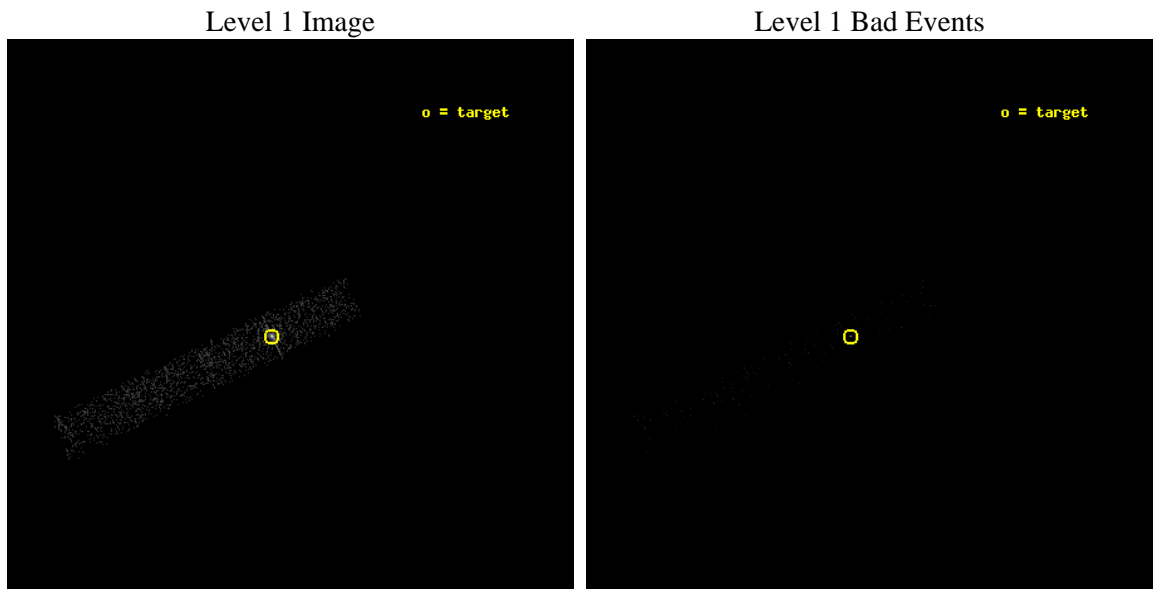
seq_num	700020	Sequence number
obs_id	372	Observation id
title	STUDIES OF RADIO JETS AND THE NARROW LINE REGIONS	Proposal title
observer	PROF. ANDREW WILSON	Principal investigator
object	NGC 4151	Source name
dtcycle	0	
cycle	P	events are from which exps? P[rimary] S[econdar
ra_targ	182.635833	Observer's specified target RA [deg]
dec_targ	39.405556	Observer's specified target Dec [deg]
ra_nom	182.6253611367	Nominal RA [deg]
dec_nom	39.411535727316	Nominal Dec [deg]
roll_nom	154.15936586222	Nominal Roll [deg]
revision	6	Processing version of data
ontime	4435.1731917709	Sum of GTIs [s]
liveltime	778.10055995982	Livetime [s]
ontime7	4435.1731917709	Sum of GTIs [s]
l2events	3362	Number of level 2 events



2 OBI Primary

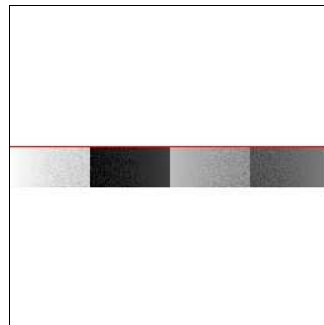
2.1 OBI

2.1.1 Images



2.1.2 Bias

Chip 7



2.1.3 Parameters

obi_num	0	Obi number	sched_exp_time	11449.929000	[s] Scheduled observation exposure time
ascdsver	8.4.5	Processing system revision	ontime	4435.1731917709	Sum of GTIs [s]
caldsver	4.5.1.1	 	ontime7	4435.1731917709	Sum of GTIs [s]
date	2012-08-24T04:22:06	Date and time of file creation	l1events	4805	Number of level 1 events
revision	6	Processing version of data			

2.1.4 Events

	ccd 7
level 1 events	4805
rejected events	1364
rejected %	28%

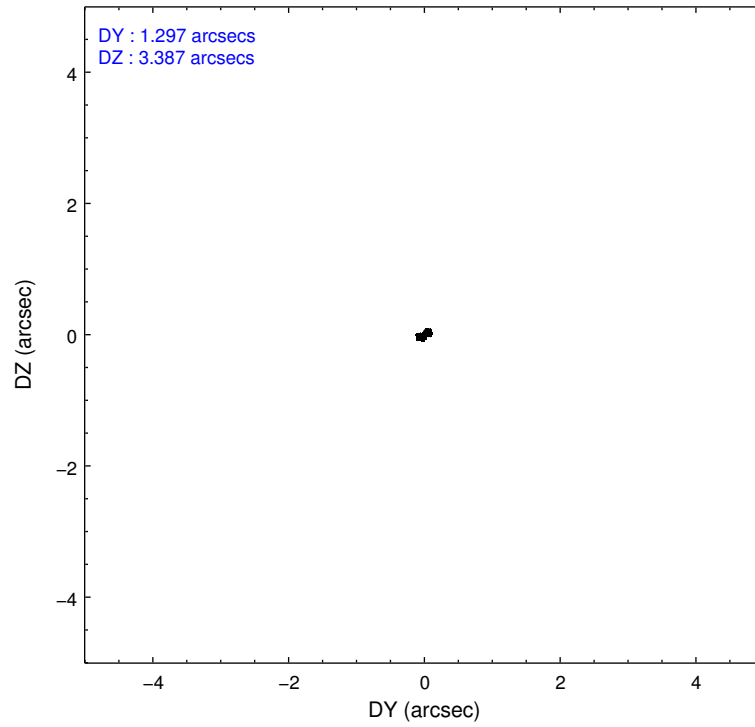
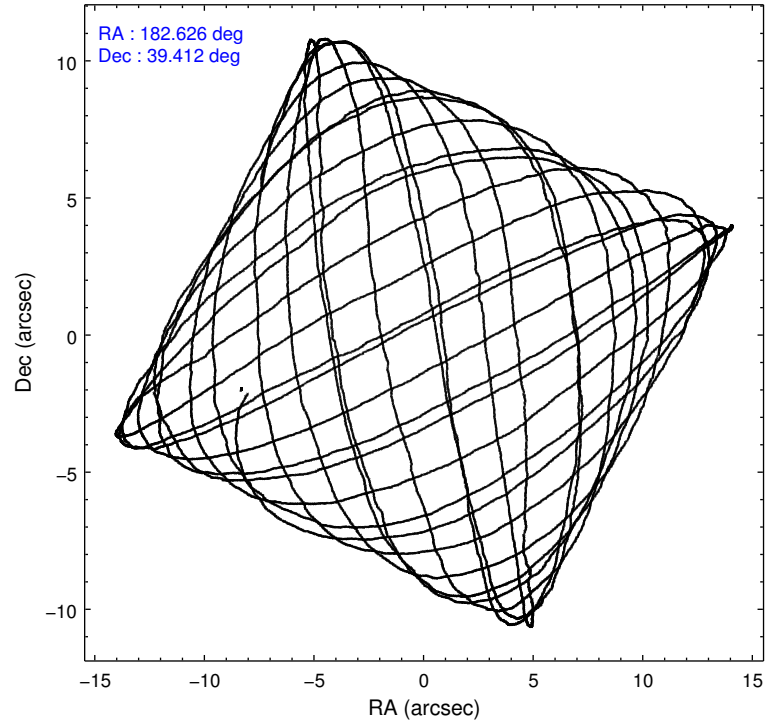
	ccd 7
grade 0 events	920
	19%
grade 1 events	12
	0%
grade 2 events	744
	15%
grade 3 events	428
	8%
grade 4 events	427
	8%
grade 5 events	208
	4%
grade 6 events	924
	19%
grade 7 events	1142
	23%

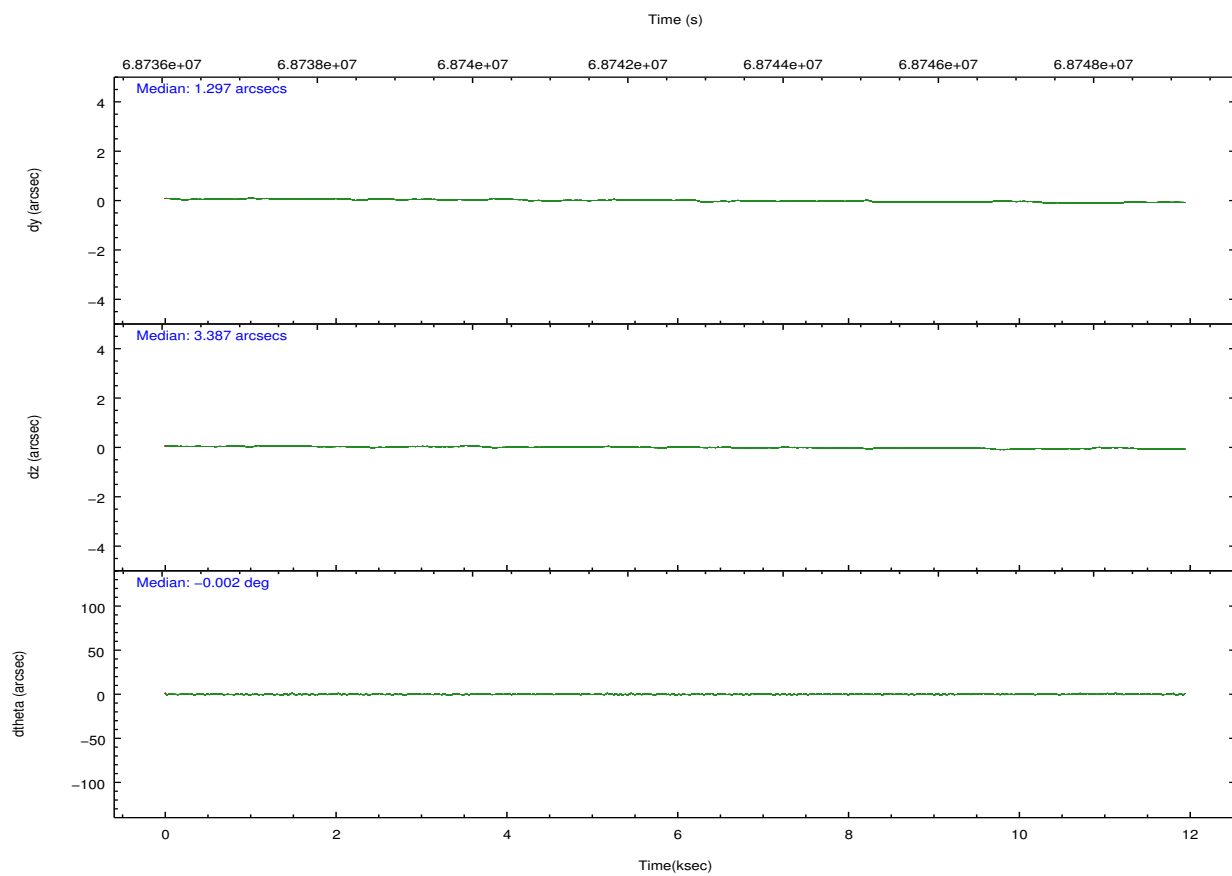
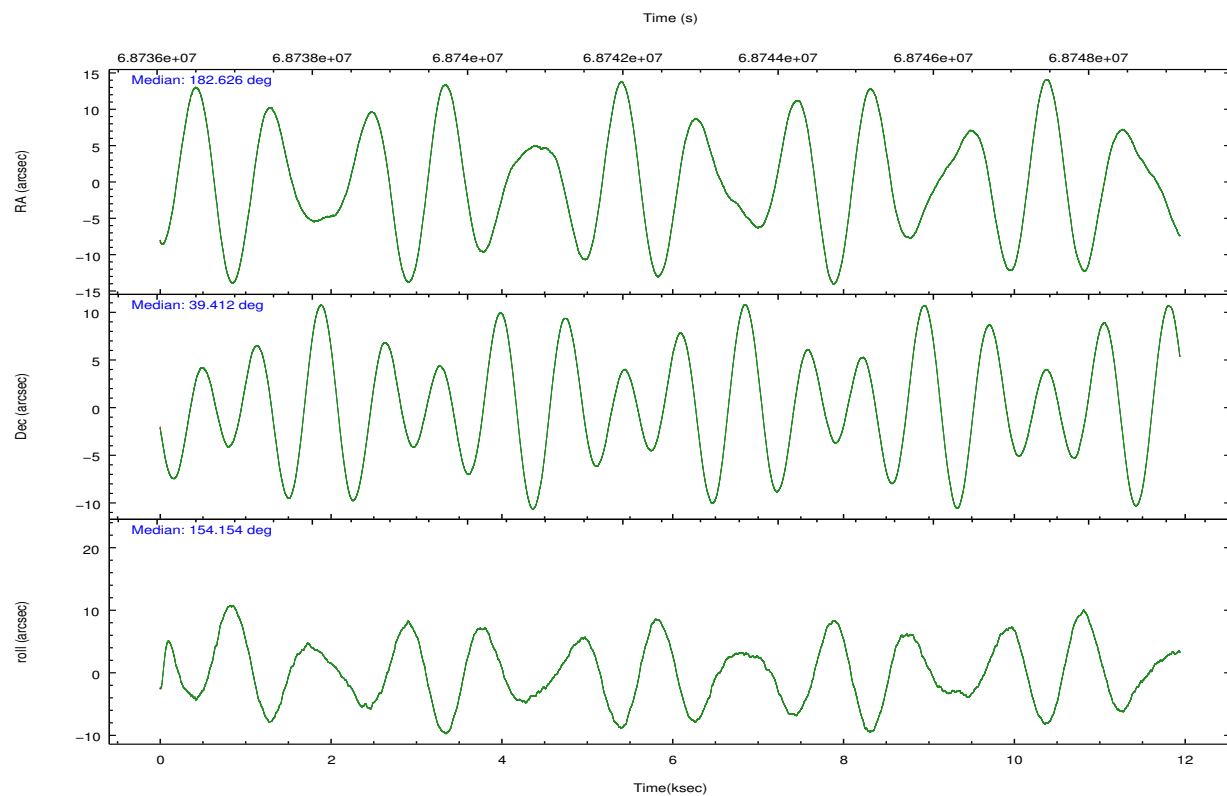
2.2 Compared Parameters

Parameter	Planned	Actual
Instrument	ACIS	ACIS
Detector	ACIS-7	ACIS-7
Grating	NONE	NONE
Data mode	VFAINT	VFAINT
Observation mode	POINTING	POINTING
[deg] Pointing RA	182.6253611367006	182.6253611367006
[deg] Pointing Dec	39.41153572731555	39.41153572731557
[deg] Pointing Roll	154.159365862223	154.159365862223
[mm] SIM focus pos	-0.68282252473119	-0.68282252473119
[mm] SIM defocus	0.001444942264670734	0.001444942264670734
[mm] SIM translation stage pos	-190.1400660499	-190.1400660499
[mm] SIM translation stage offset	0.007542945932812017	0.007542945932812017
[s] Observation start time (MET)	68736459.78	68736459.78
Observation start date	2000-03-06T13:37:45	2000-03-06T13:27:39
[s] Observation end time (MET)	68749282.53	68749282.53
Observation end date	2000-03-06T16:48:35	2000-03-06T17:01:22
Read mode	TIMED	TIMED

Parameter	Planned	Actual
Obspar format version number	7	7
Obspar file type	PREDICTED	ACTUAL
Obspar update status	OVERRIDE	OVERRIDE
Number of optional ACIS chips dropped	0	0
On-chip summing requested	N	N
Subarray requested	CUSTOM	CUSTOM
Subarray start row	447	447
Subarray row count	128	128
Alternating exposures requested	Y	Y
[s] Primary exposure time	0.1	0.1
[s] Secondary exposure time	0.400000	0.400000
Duty cycle	2	2

2.3 Aspect



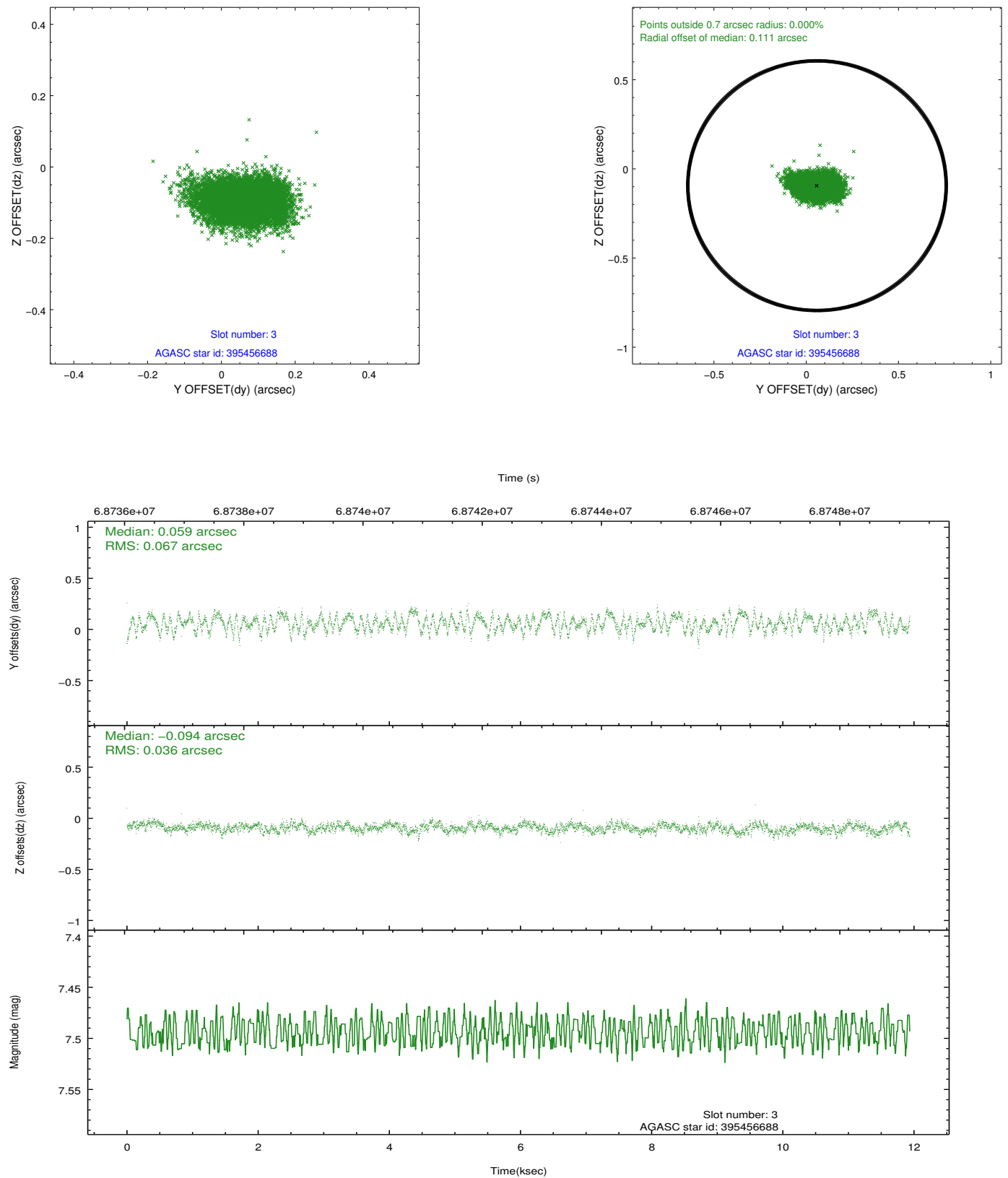


Slot Statistics

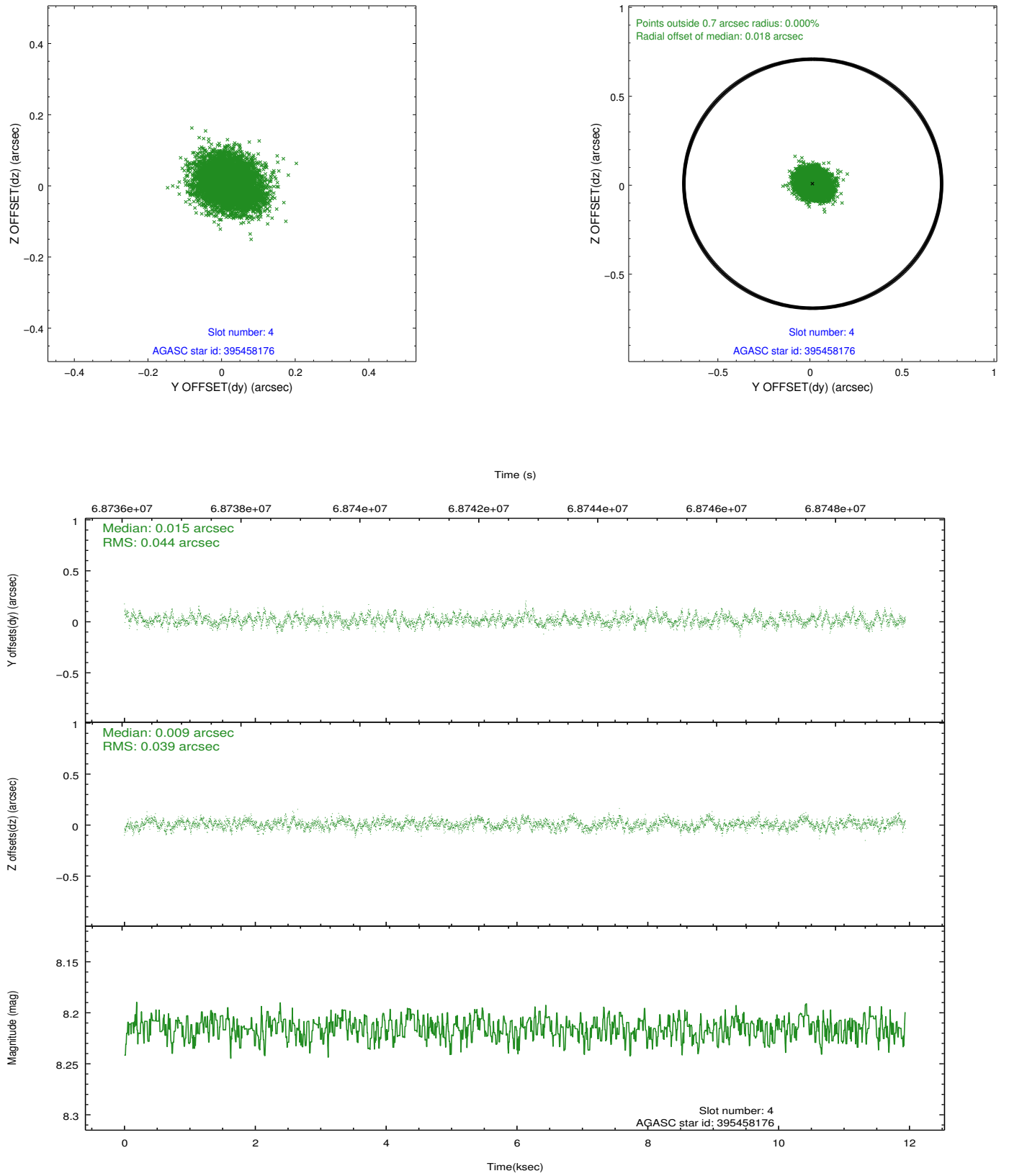
slot	status	id	mag	n_pts	med_dy	med_dz	dr1	dr2	ra	dec	mean_y	mean_z
0	FID	ACIS-S-2	7.11	2913	-0.005	-0.018	0.006	0.010	0.000000	0.000000	-753.95	-1724.45
1	FID	ACIS-S-4	7.21	2912	0.005	0.007	0.005	0.009	0.000000	0.000000	2159.21	183.55
2	FID	ACIS-S-5	7.24	2913	-0.030	0.019	0.006	0.010	0.000000	0.000000	-1806.22	177.82
3	GUIDE	395456688	7.49	5824	0.059	-0.094	0.081	0.129	182.405236	40.252056	1957.02	-2404.46
4	GUIDE	395458176	8.22	5825	0.015	0.009	0.064	0.101	182.790485	39.130199	-771.59	758.13
5	GUIDE	395460552	8.96	5821	-0.048	0.069	0.076	0.126	183.182835	39.403608	-1318.00	-607.52
6	GUIDE	395459952	9.39	5818	-0.116	0.025	0.088	0.146	181.854255	39.210518	1705.99	1635.88
7	GUIDE	395458552	9.80	5820	0.089	-0.005	0.095	0.153	182.833984	39.179797	-801.98	545.04

2.4 Star Slots

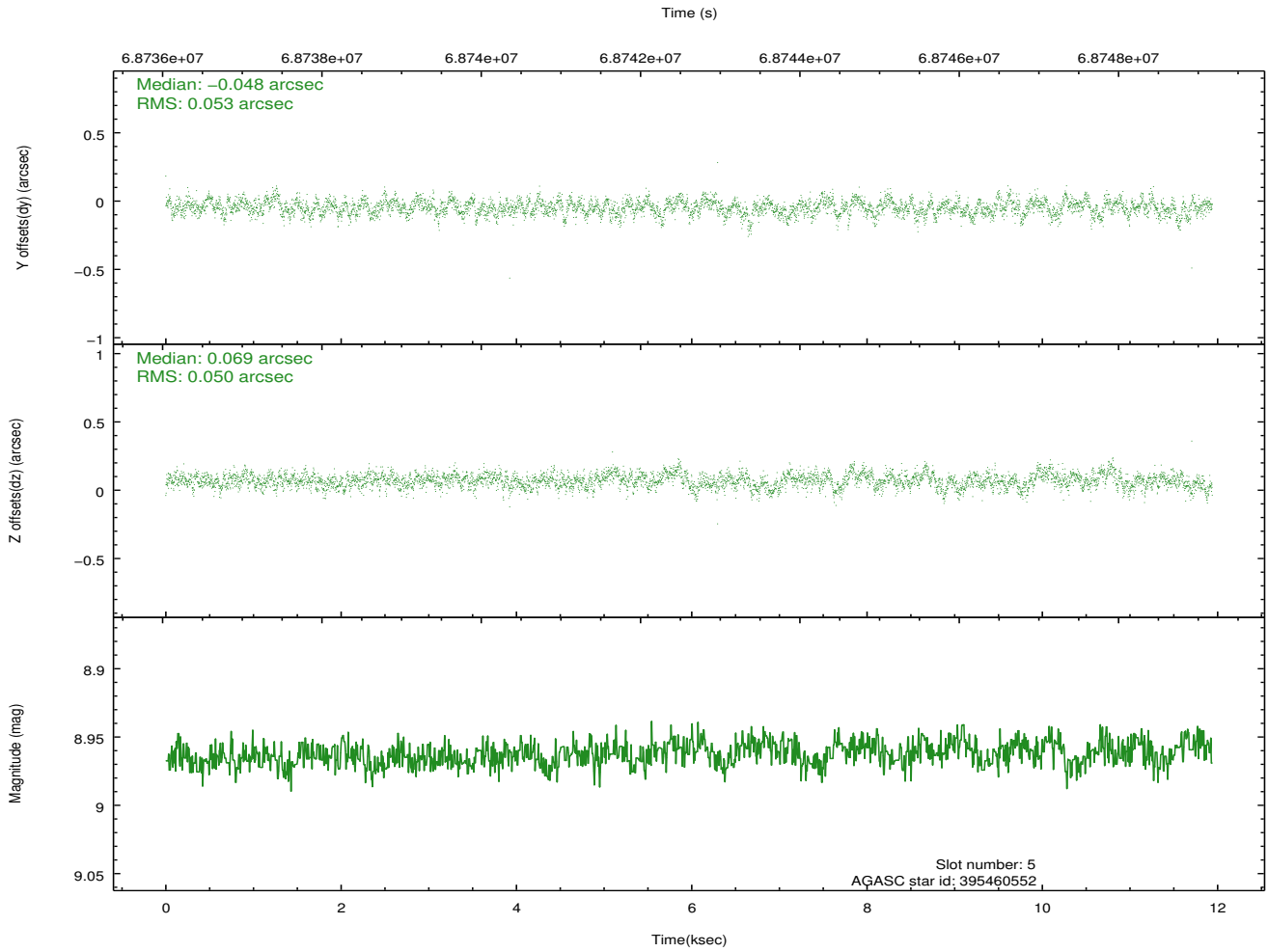
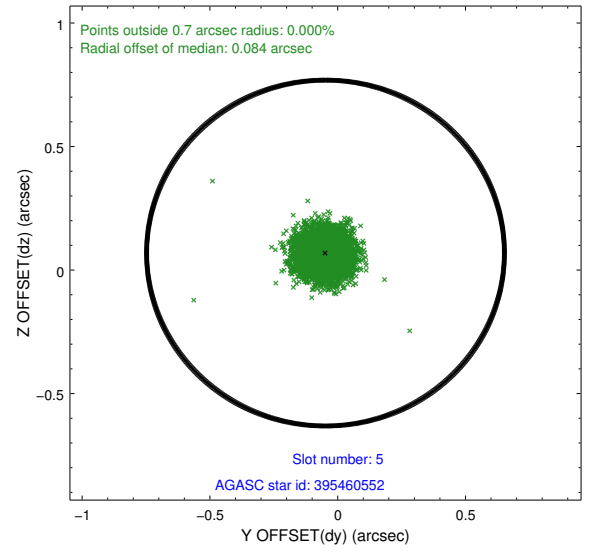
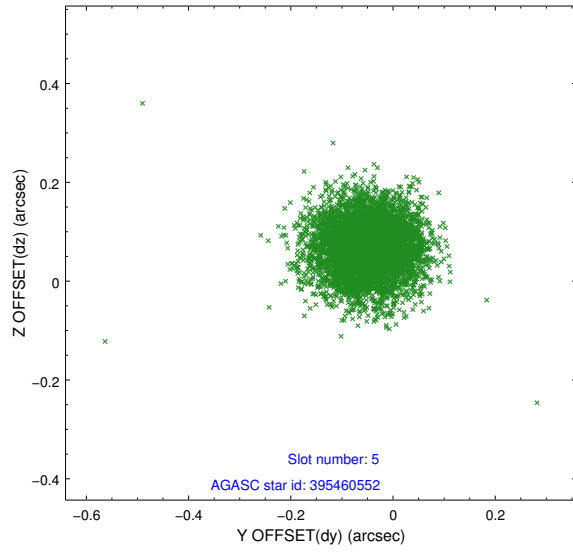
2.4.1 Slot 3



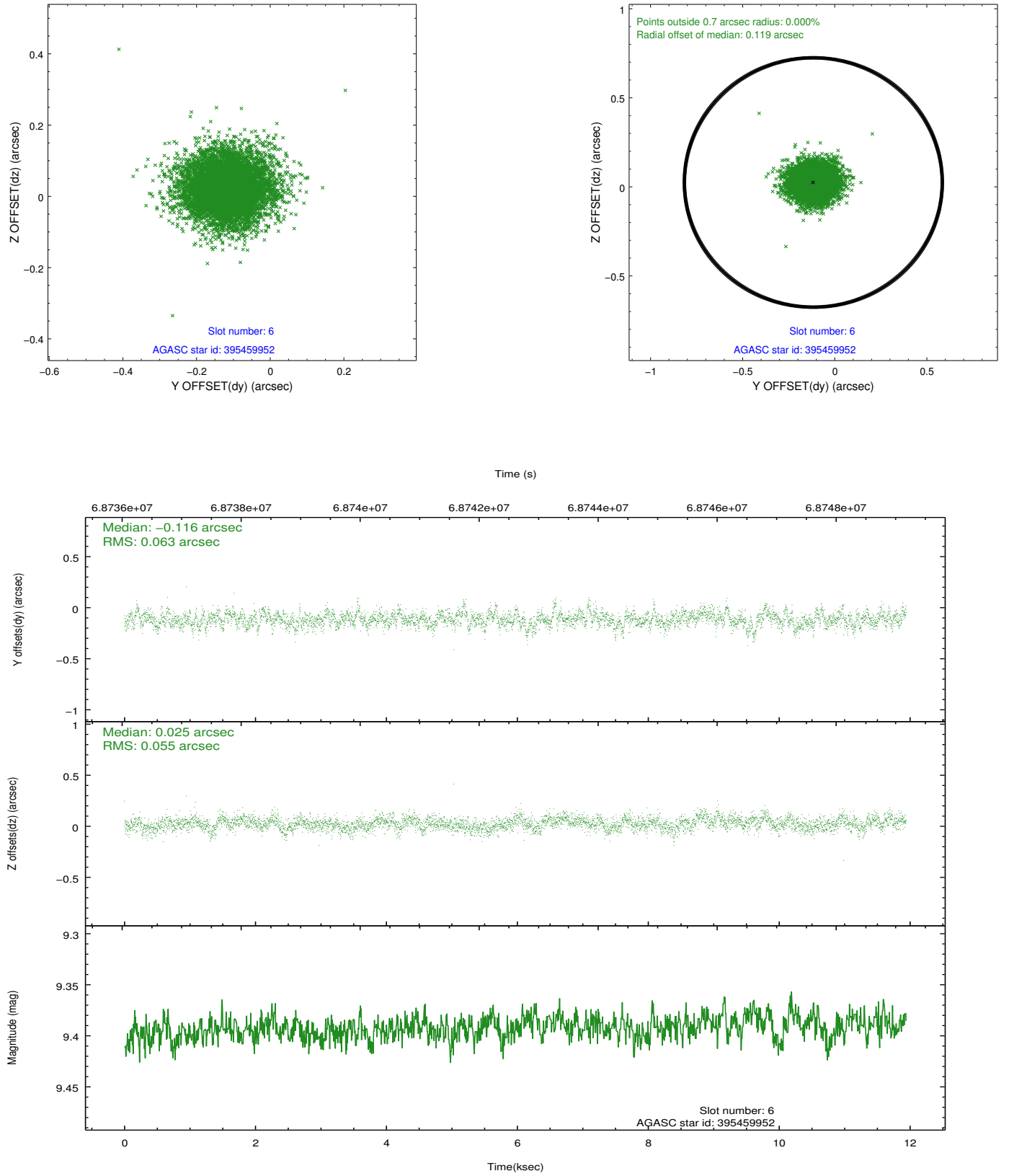
2.4.2 Slot 4



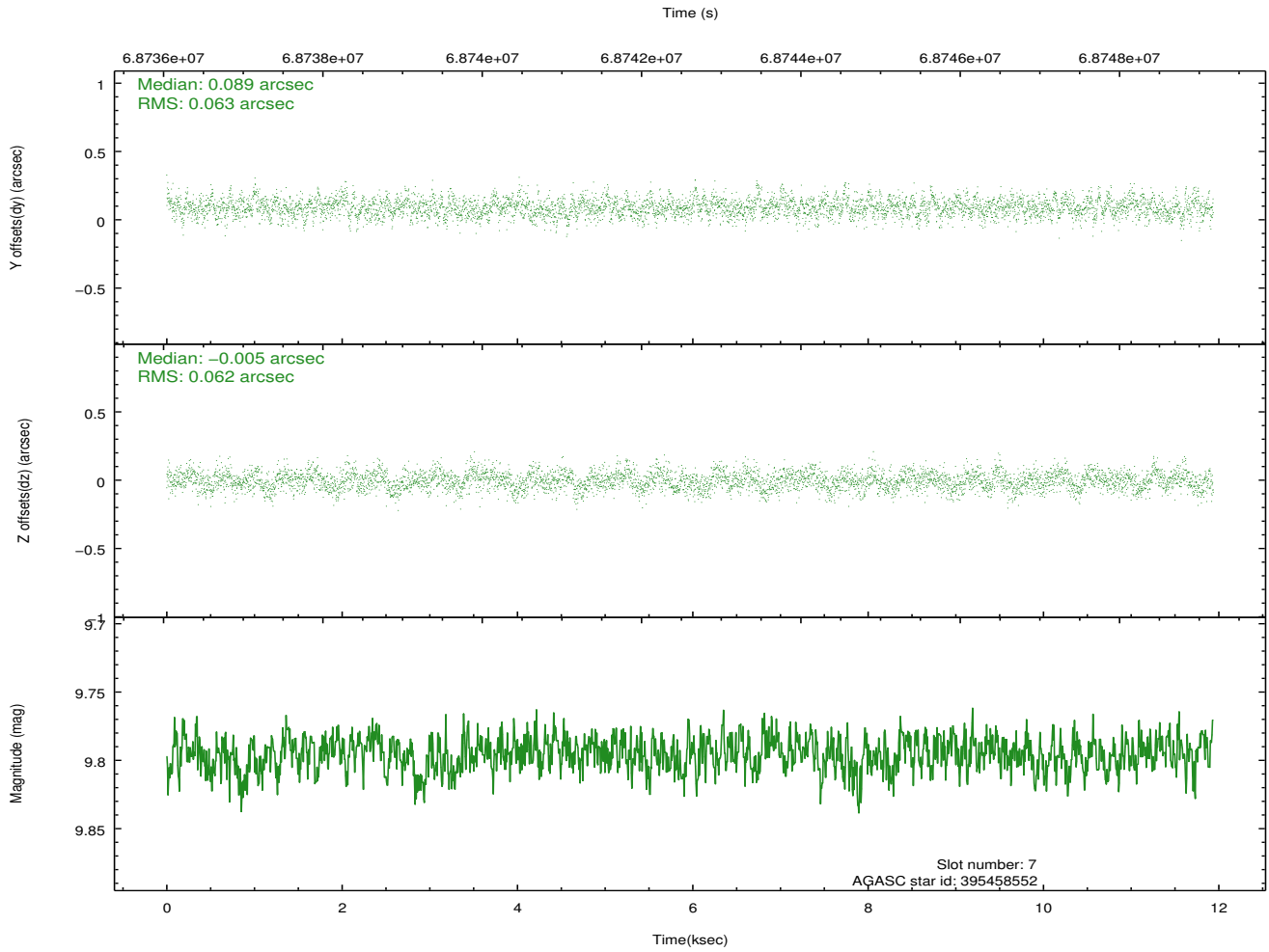
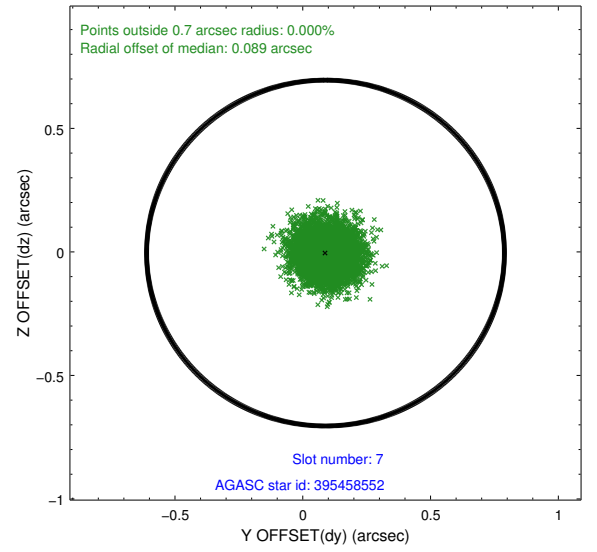
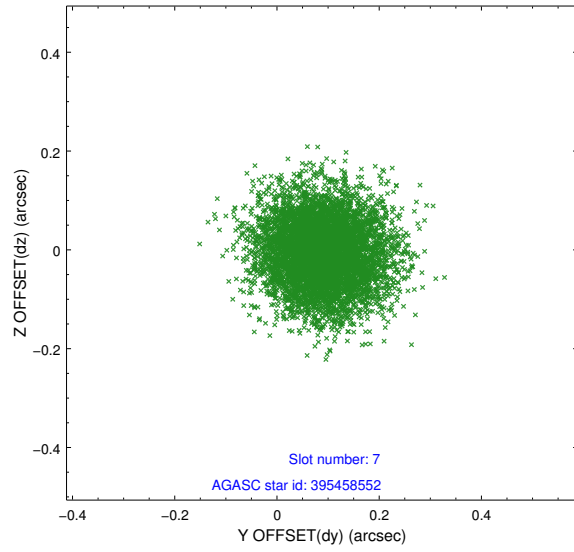
2.4.3 Slot 5



2.4.4 Slot 6

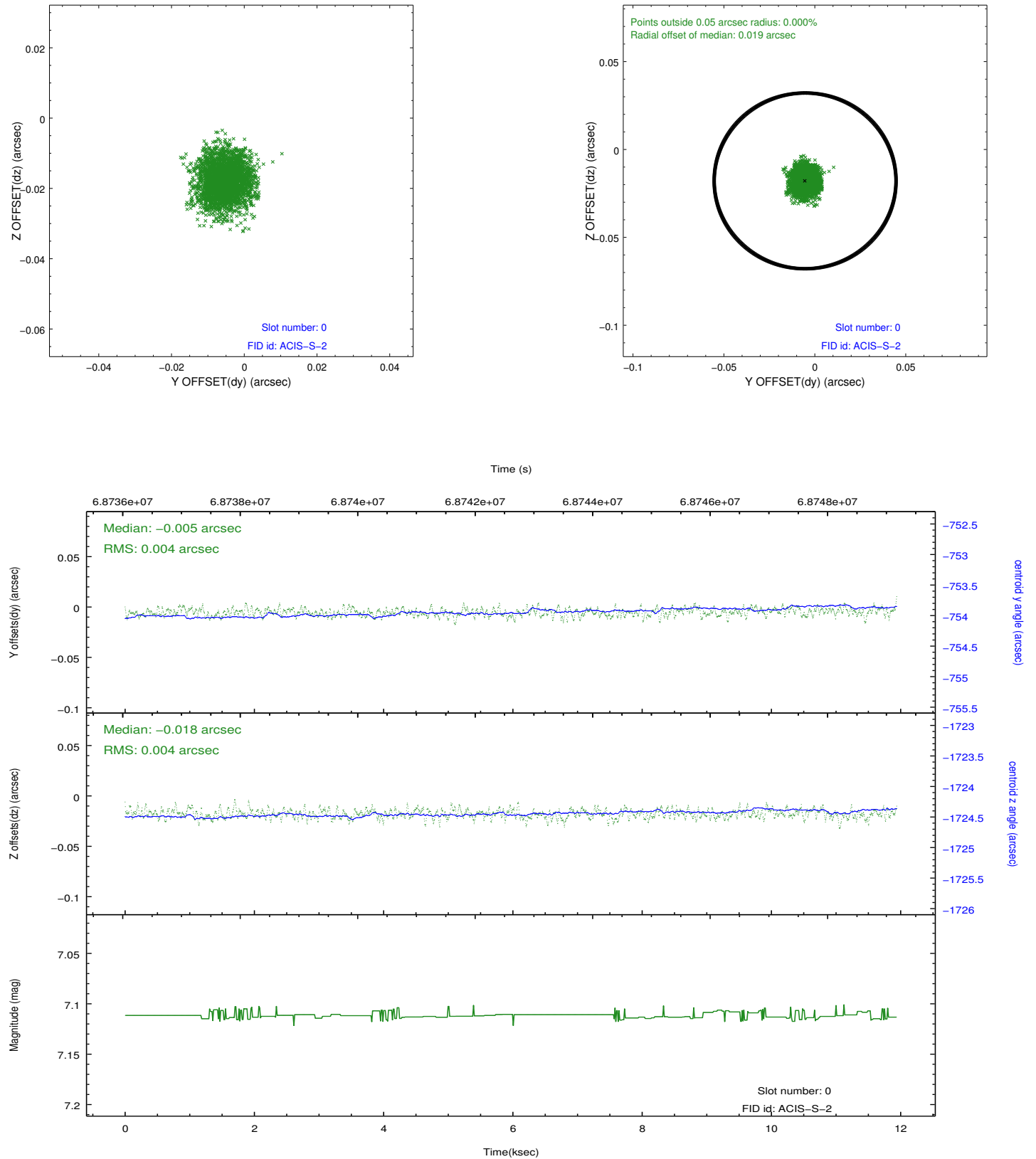


2.4.5 Slot 7

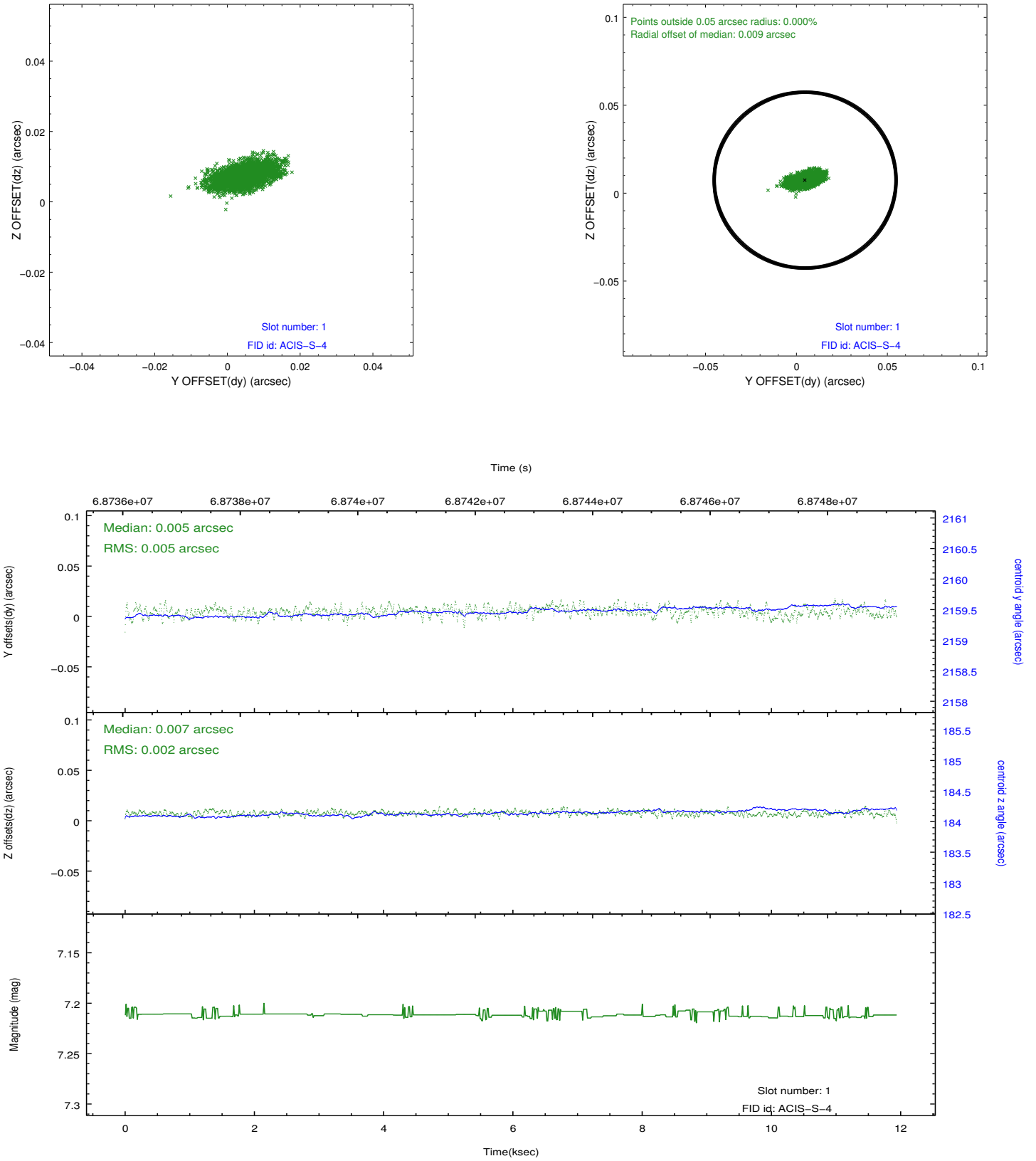


2.5 FID Slots

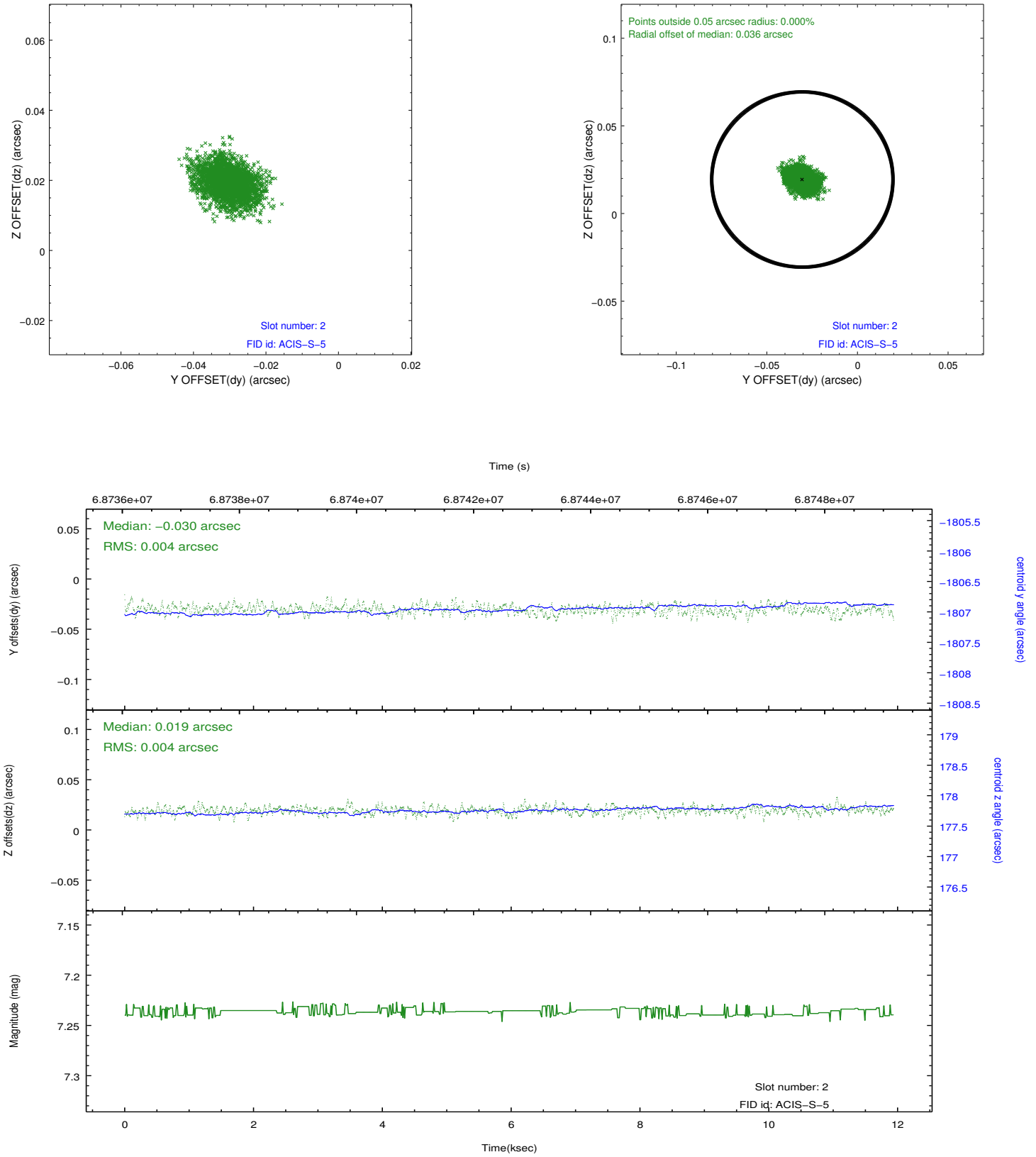
2.5.1 Slot 0



2.5.2 Slot 1



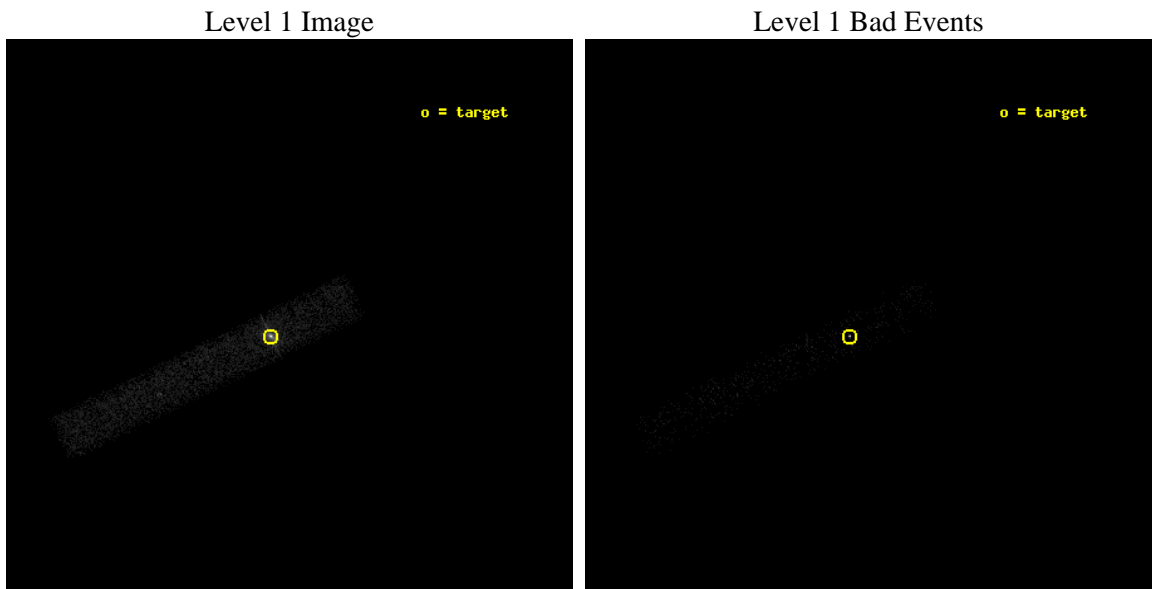
2.5.3 Slot 2



3 OBI Secondary

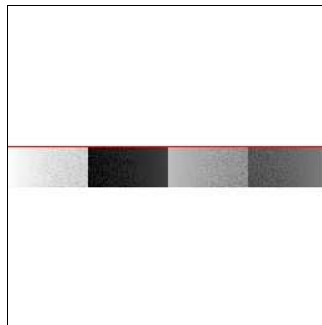
3.1 OBI

3.1.1 Images



3.1.2 Bias

Chip 7



3.1.3 Parameters

obi_num	0	Obi number	sched_exp_time	11449.929000	[s] Scheduled observation exposure time
ascdsver	8.4.5	Processing system revision	ontime	6863.9261841178	Sum of GTIs [s]
caldsver	4.5.1.1	 	ontime7	6863.9261841178	Sum of GTIs [s]
date	2012-08-24T04:22:50	Date and time of file creation	l1events	23579	Number of level 1 events
revision	6	Processing version of data			

3.1.4 Events

	ccd 7
level 1 events	23579
rejected events	6315
rejected %	26%

	ccd 7
grade 0 events	4131
	17%
grade 1 events	222
	0%
grade 2 events	3820
	16%
grade 3 events	1805
	7%
grade 4 events	1891
	8%
grade 5 events	1647
	6%
grade 6 events	5618
	23%
grade 7 events	4445
	18%

A Summary

A.1 Status

V&V Scientist	Jen Lauer
V&V Date (YYYY-MM-DD)	2012.08.24
V&V Edition	1
V&V Disposition and Status	OK
V&V Charge Time	11.3

A.2 Comments