

V&V Reference Report

L2 ASCDS Version : 8.4.5

Observation 342 - L2 Version 5
Chandra X-Ray Center

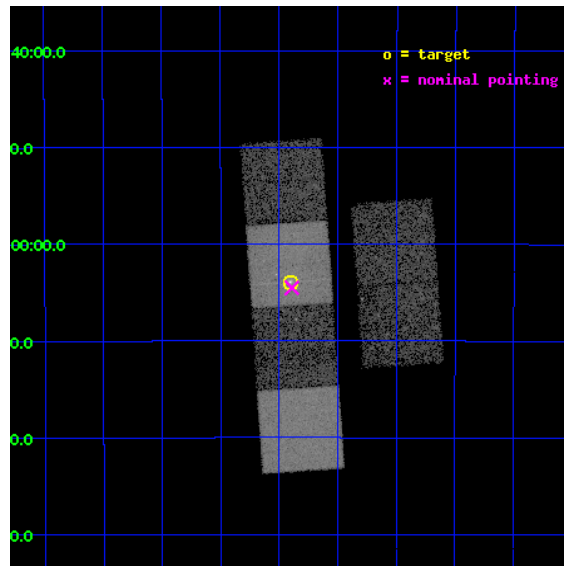
L2 Processing Date : Aug 22 2012

Contents

1	Front	2
2	OBI	3
2.1	OBI	3
2.1.1	Images	3
2.1.2	Bias	3
2.1.3	Parameters	4
2.1.4	Events	4
2.2	Compared Parameters	5
2.3	Aspect	6
2.4	Star Slots	9
2.4.1	Slot 3	9
2.4.2	Slot 4	10
2.4.3	Slot 5	11
2.4.4	Slot 6	12
2.4.5	Slot 7	13
2.5	FID Slots	14
2.5.1	Slot 0	14
2.5.2	Slot 1	15
2.5.3	Slot 2	16
A	Summary	17
A.1	Status	17
A.2	Comments	17

1 Front

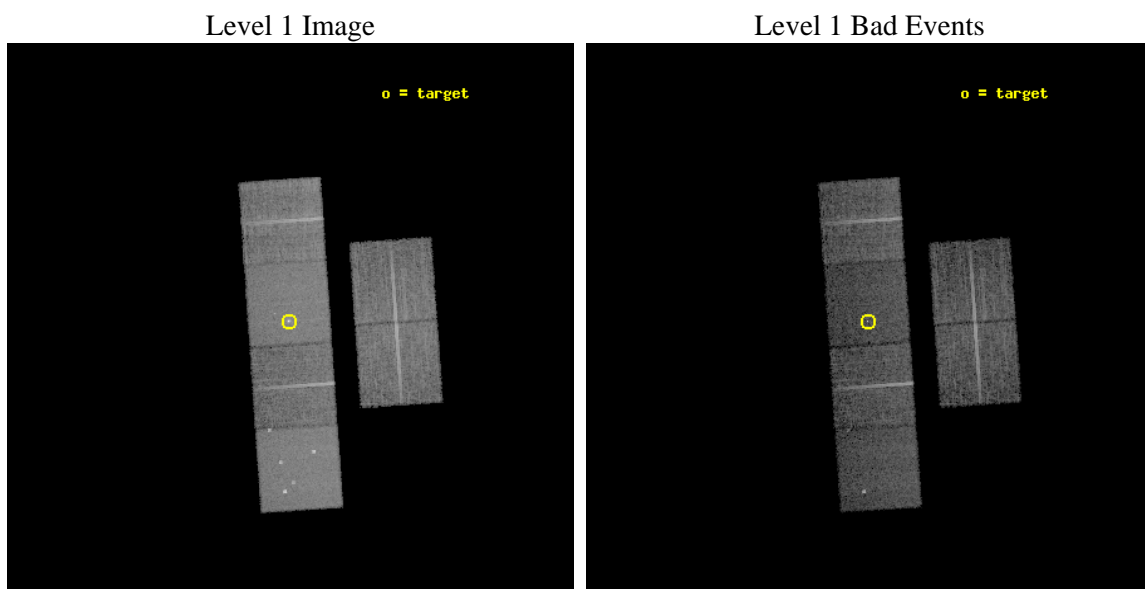
seq_num	700014	Sequence number
obs_id	342	Observation id
title	STUDIES OF RADIO JETS AND THE NARROW LINE REGIONS	Proposal title
observer	Professor Andrew Wilson	Principal investigator
object	NGC 526A	Source name
dtcycle	0	
cycle	P	events from which exps? Prim/Second/Both
ra_targ	20.97633	Observer's specified target RA [deg]
dec_targ	-35.06561	Observer's specified target Dec [deg]
ra_nom	20.973172598579	Nominal RA [deg]
dec_nom	-35.075441009207	Nominal Dec [deg]
roll_nom	266.02191115481	Nominal Roll [deg]
revision	5	Processing version of data
ontime	8755.2000081539	Sum of GTIs [s]
liveltime	8644.3363939021	Livetime [s]
ontime2	8755.2000081539	Sum of GTIs [s]
ontime3	8755.2000081539	Sum of GTIs [s]
ontime5	8755.2000081539	Sum of GTIs [s]
ontime6	8755.2000081539	Sum of GTIs [s]
ontime7	8755.2000081539	Sum of GTIs [s]
ontime8	8751.9591775686	Sum of GTIs [s]
l2events	123324	Number of level 2 events



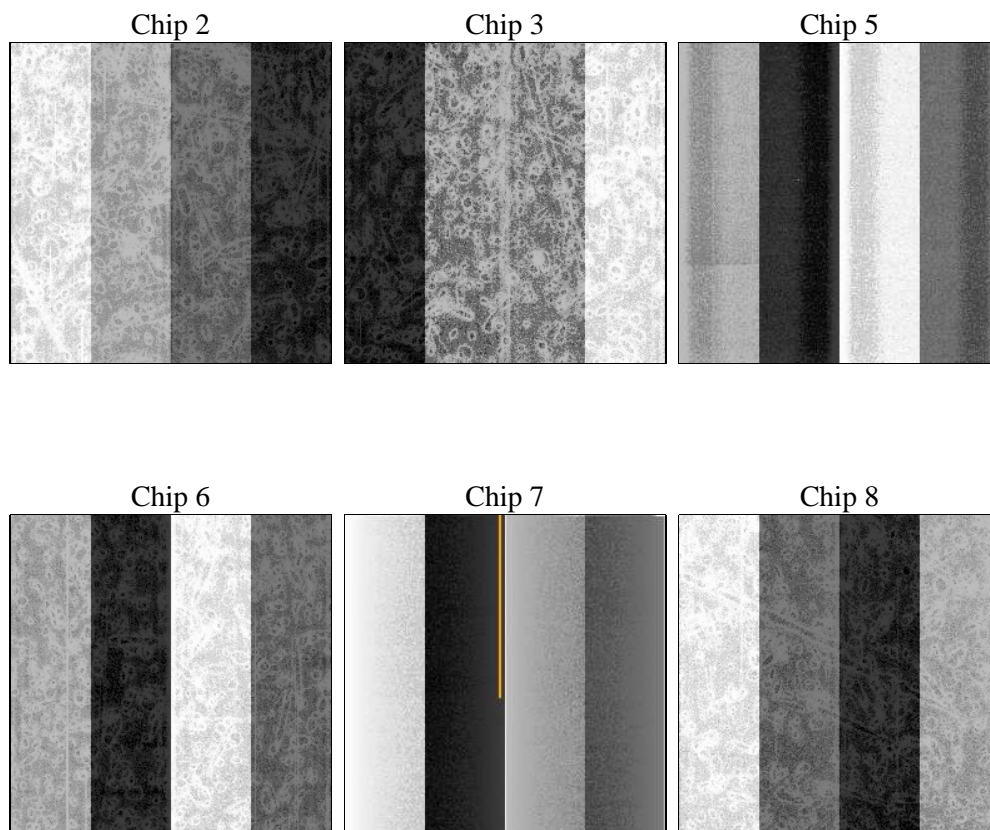
2 OBI

2.1 OBI

2.1.1 Images



2.1.2 Bias



2.1.3 Parameters

obi_num	0	Obi number	sched_exp_time	9000.000000	[s] Scheduled observation exposure time
ascdsver	8.4.5	Processing system revision	ontime	8755.2000081539	Sum of GTIs [s]
caldsver	4.5.1.1	 	ontime2	8755.2000081539	Sum of GTIs [s]
date	2012-08-22T13:06:58	Date and time of file creation	ontime3	8755.2000081539	Sum of GTIs [s]
revision	5	Processing version of data	ontime5	8755.2000081539	Sum of GTIs [s]
			ontime6	8755.2000081539	Sum of GTIs [s]
			ontime7	8755.2000081539	Sum of GTIs [s]
			ontime8	8751.9591775686	Sum of GTIs [s]
			l1events	501322	Number of level 1 events

2.1.4 Events

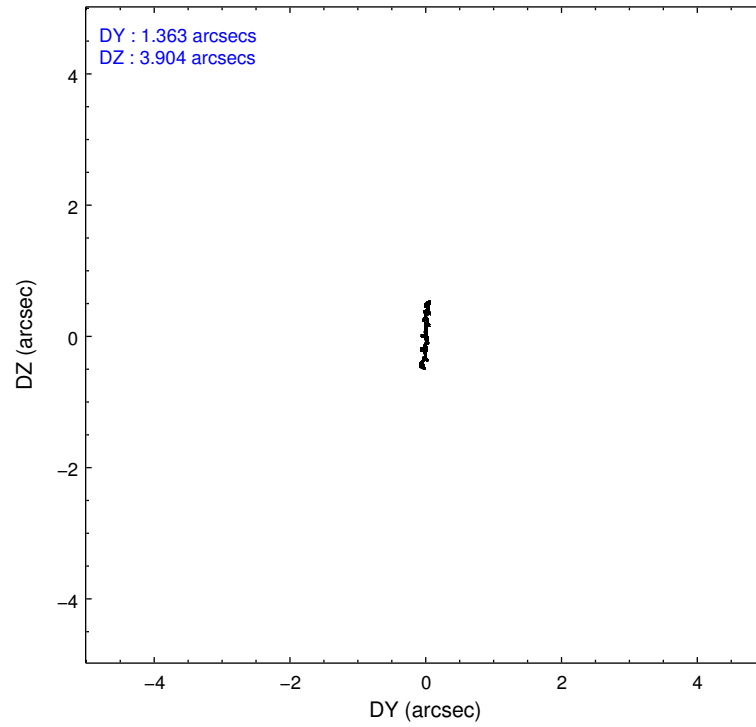
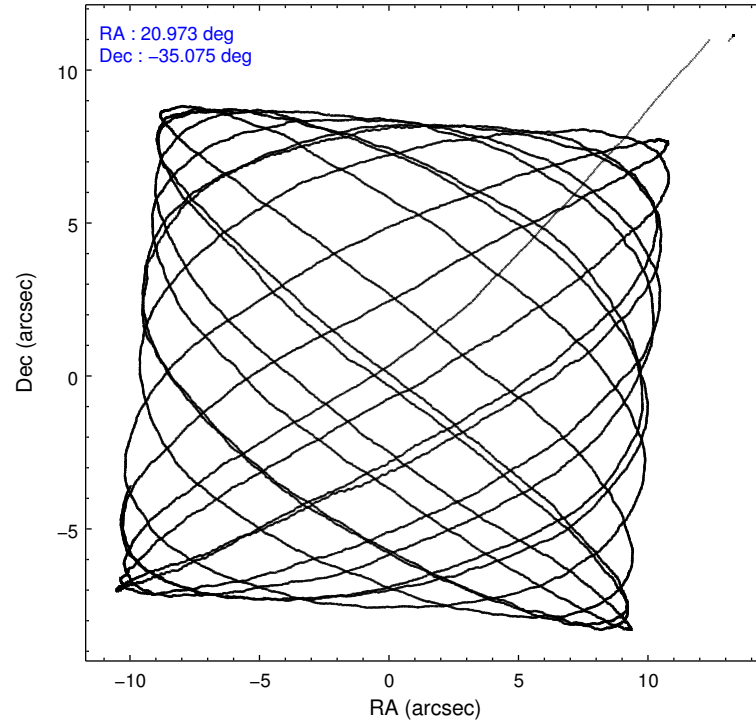
	ccd 2	ccd 3	ccd 5	ccd 6	ccd 7	ccd 8		ccd 2	ccd 3	ccd 5	ccd 6	ccd 7	ccd 8
level 1 events	74050	70477	102379	68100	96086	90230	grade 0 events	3175	3252	8603	3594	5796	5464
rejected events	66767	63189	48265	60224	46434	73556		4%	4%	8%	5%	6%	6%
rejected %	90%	89%	47%	88%	48%	81%	grade 1 events	30	31	153	34	141	75
								0%	0%	0%	0%	0%	0%
							grade 2 events	1527	1436	15411	1424	9911	3489
								2%	2%	15%	2%	10%	3%
							grade 3 events	675	693	2574	746	4651	1831
								0%	0%	2%	1%	4%	2%
							grade 4 events	691	680	2524	751	4425	1732
								0%	0%	2%	1%	4%	1%
							grade 5 events	2049	2280	6960	2458	7859	3096
								2%	3%	6%	3%	8%	3%
							grade 6 events	1218	1229	25013	1361	24889	4160
								1%	1%	24%	1%	25%	4%
							grade 7 events	64685	60876	41141	57732	38414	70383
								87%	86%	40%	84%	39%	78%

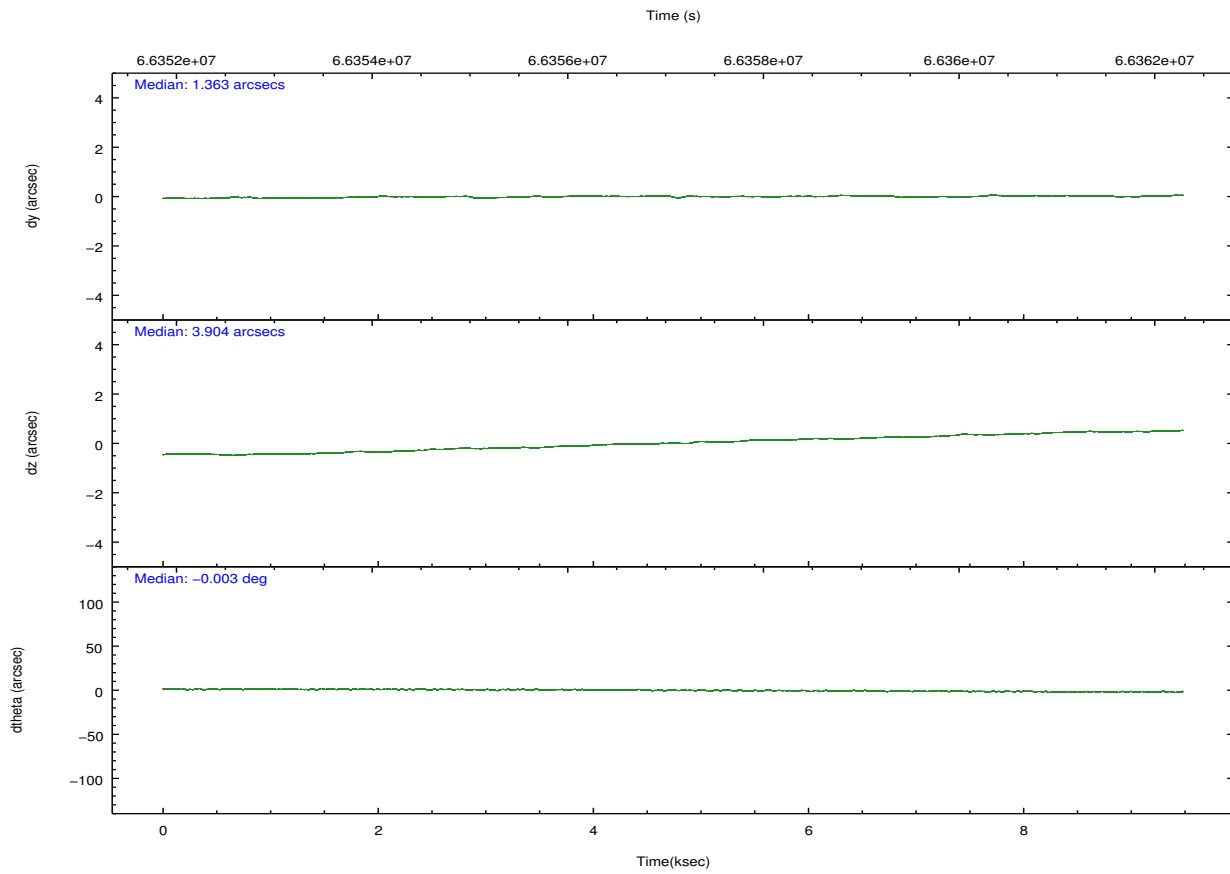
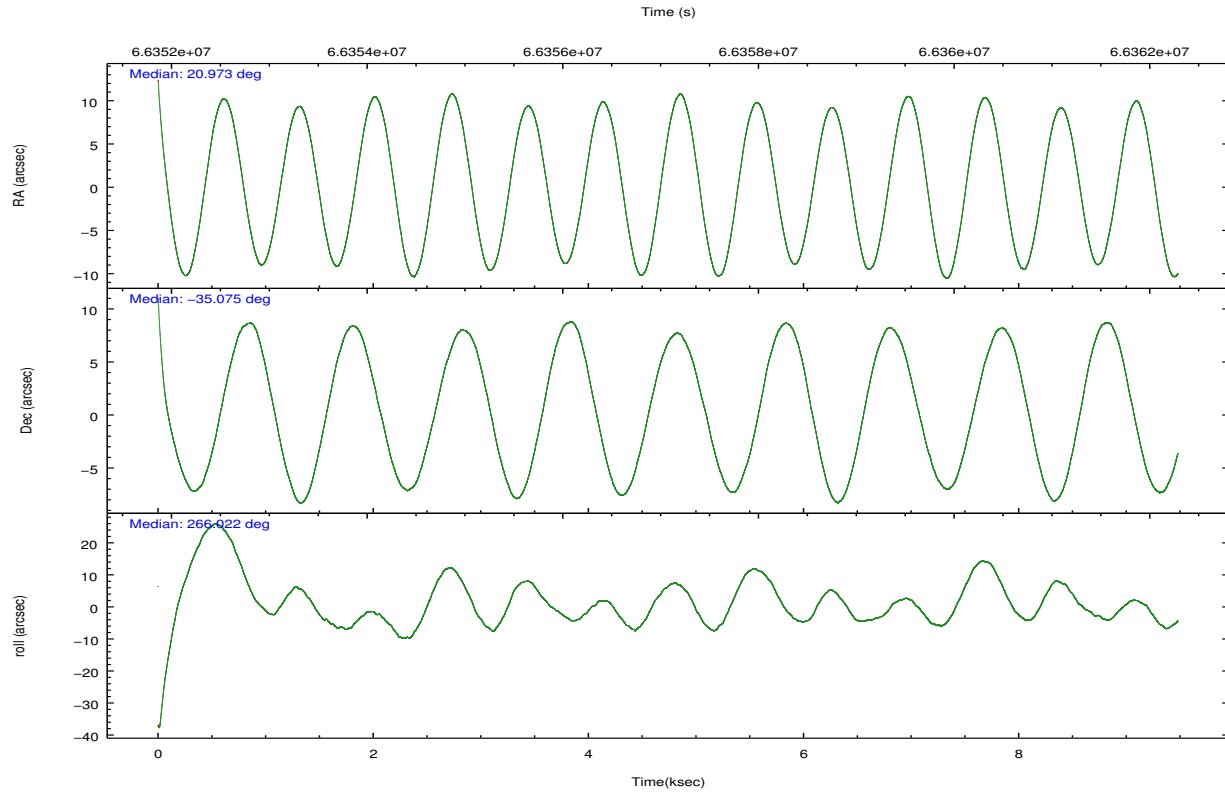
2.2 Compared Parameters

Parameter	Planned	Actual
Instrument	ACIS	ACIS
Detector	ACIS-235678	ACIS-235678
Grating	NONE	NONE
Data mode	FAINT	FAINT
Observation mode	POINTING	POINTING
[deg] Pointing RA	20.958465	20.97317259857859
[deg] Pointing Dec	-35.050686	-35.07544100920653
[deg] Pointing Roll	265.856908	266.0219111548068
[mm] SIM focus pos	-0.684267	-0.6828225247311905
[mm] SIM defocus	0	0.001444936568705701
[mm] SIM translation stage pos	-190.132523	-190.1400660498719
[mm] SIM translation stage offset	0	0.00754346686406393
[s] Observation start time (MET)	66352817.184000	66351567.529567
Observation start date	2000-02-07T23:19:13	2000-02-07T22:59:27
[s] Observation end time (MET)	66361817.184000	66362842.529978
Observation end date	2000-02-08T01:49:13	2000-02-08T02:07:22
Read mode	TIMED	TIMED

Parameter	Planned	Actual
Obspar format version number	7	7
Obspar file type	PREDICTED	ACTUAL
Obspar update status	NONE	UPDATED
Number of optional ACIS chips dropped	0	0
On-chip summing requested	N	N
Subarray requested	NONE	NONE
Alternating exposures requested	N	N
[s] Primary exposure time	0.000000	3.2

2.3 Aspect



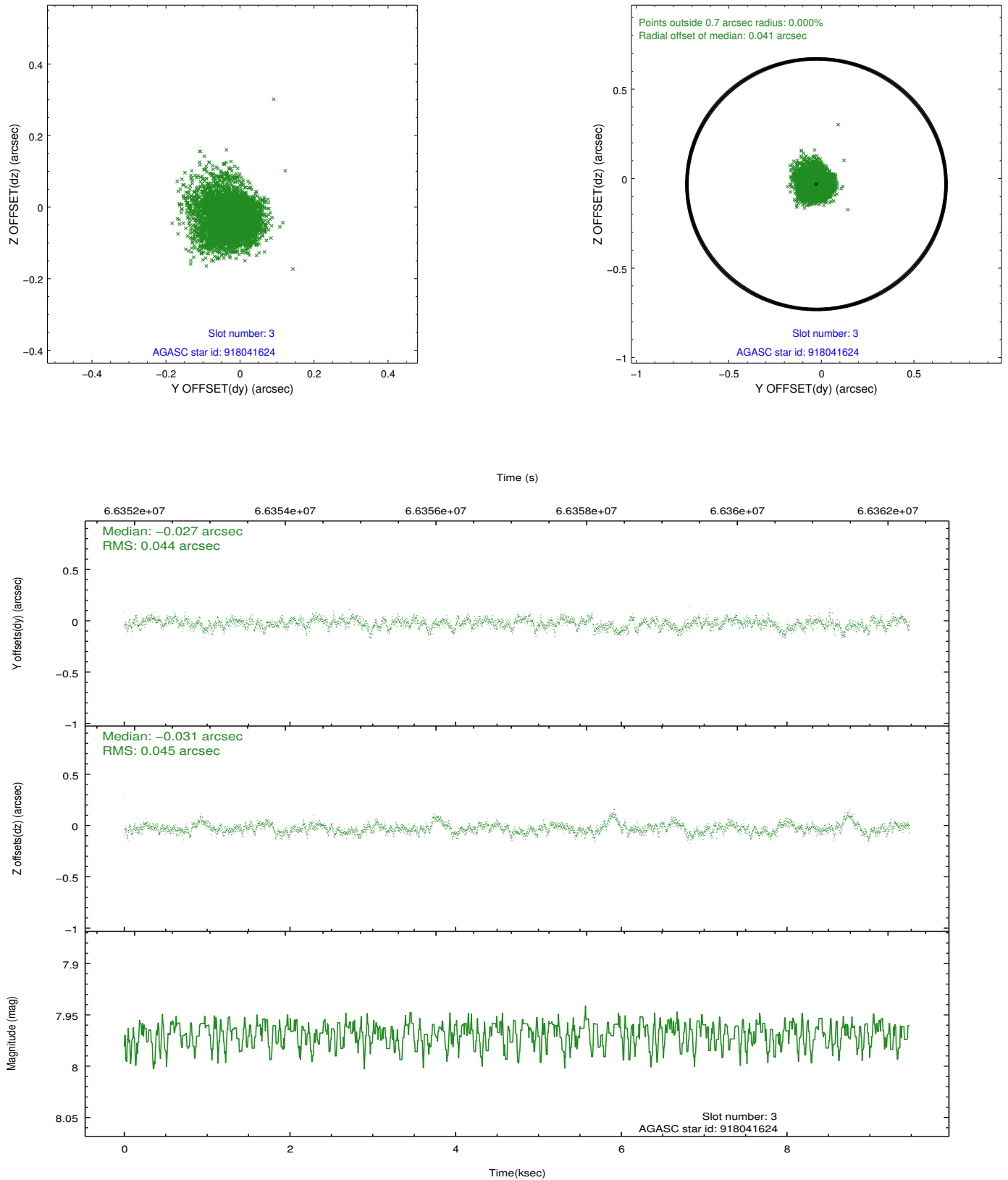


Slot Statistics

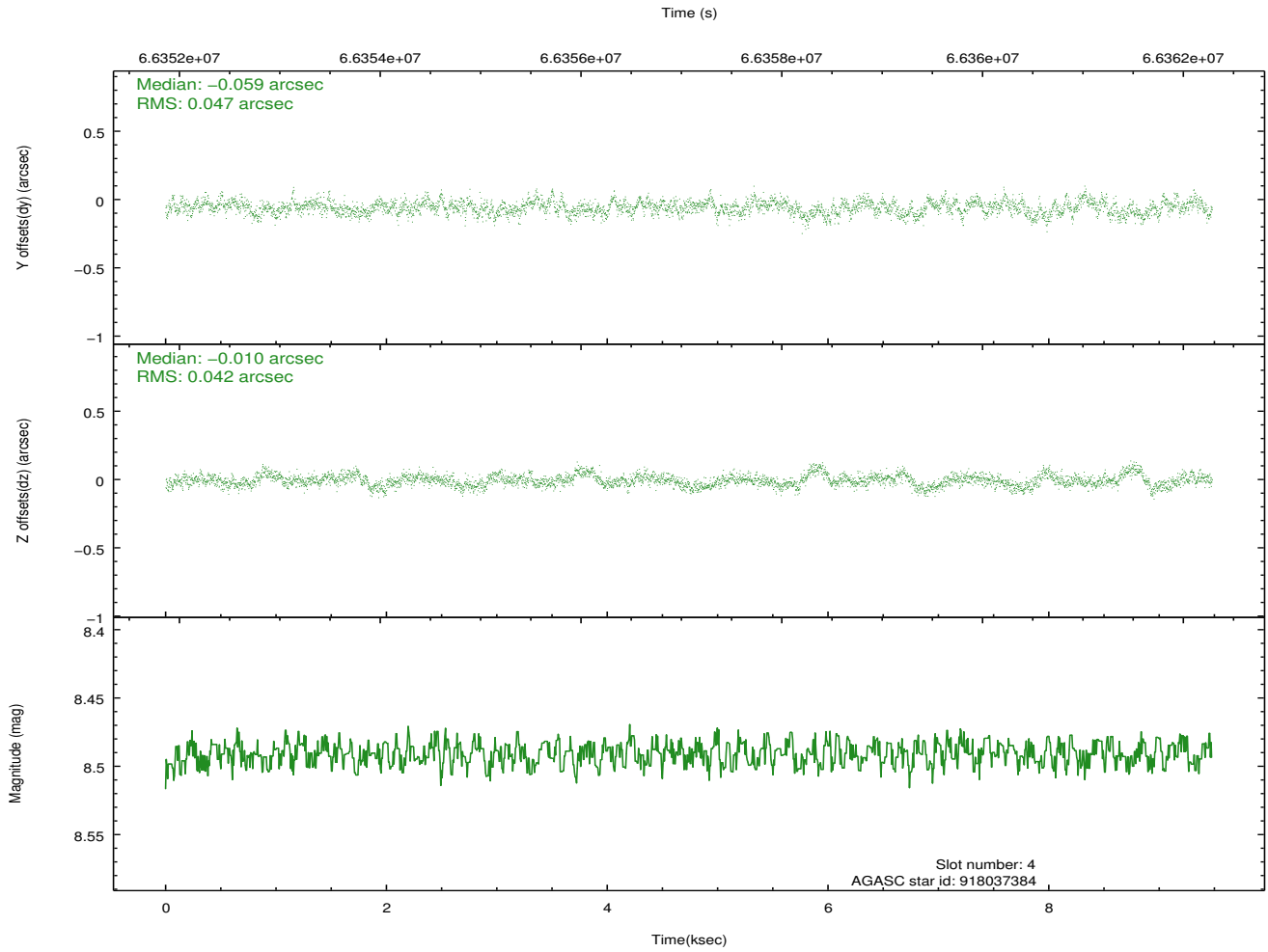
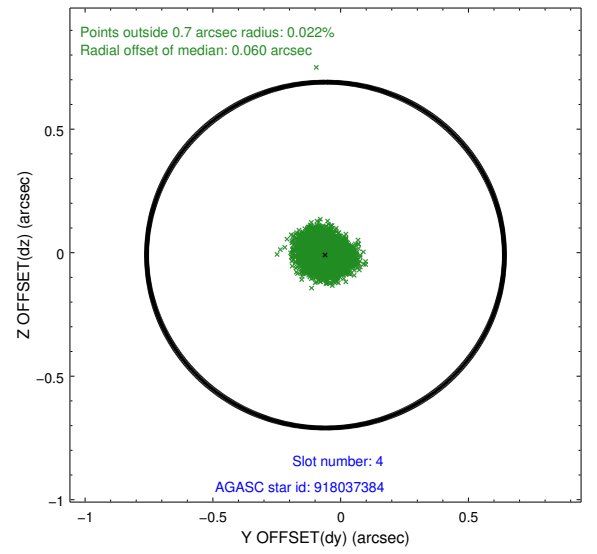
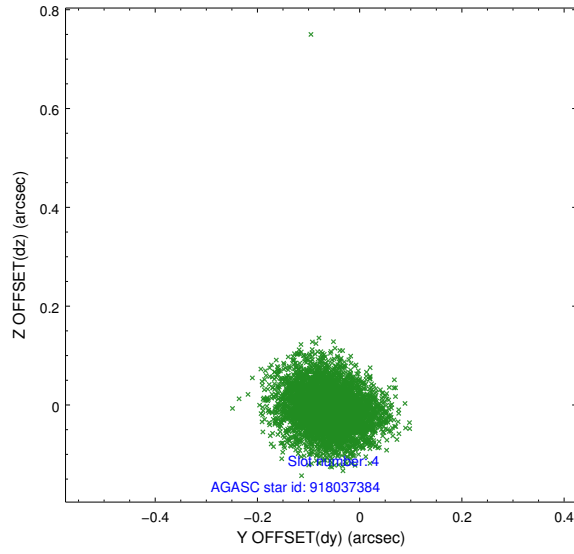
slot	status	id	mag	n_pts	med_dy	med_dz	dr1	dr2	ra	dec	mean_y	mean_z
0	FID	ACIS-S-2	7.11	2313	-0.006	-0.014	0.009	0.014	0.000000	0.000000	-754.00	-1724.99
1	FID	ACIS-S-4	7.21	2313	-0.005	0.007	0.006	0.011	0.000000	0.000000	2159.07	182.86
2	FID	ACIS-S-5	7.23	2312	-0.019	0.016	0.008	0.013	0.000000	0.000000	-1806.08	177.28
3	GUIDE	918041624	7.97	4624	-0.027	-0.031	0.066	0.112	20.656436	-34.992038	-144.88	-903.74
4	GUIDE	918037384	8.49	4622	-0.059	-0.010	0.067	0.108	20.982960	-35.723099	2409.14	245.96
5	GUIDE	918041544	10.04	4620	-0.135	0.118	0.105	0.171	20.868409	-34.646803	-1430.38	-371.00
6	GUIDE	918039824	9.59	4623	0.039	0.023	0.120	0.191	20.361464	-35.683965	2405.00	-1576.32
7	GUIDE	918034856	10.71	4622	0.171	-0.089	0.198	0.386	20.462620	-35.346988	1173.47	-1375.45

2.4 Star Slots

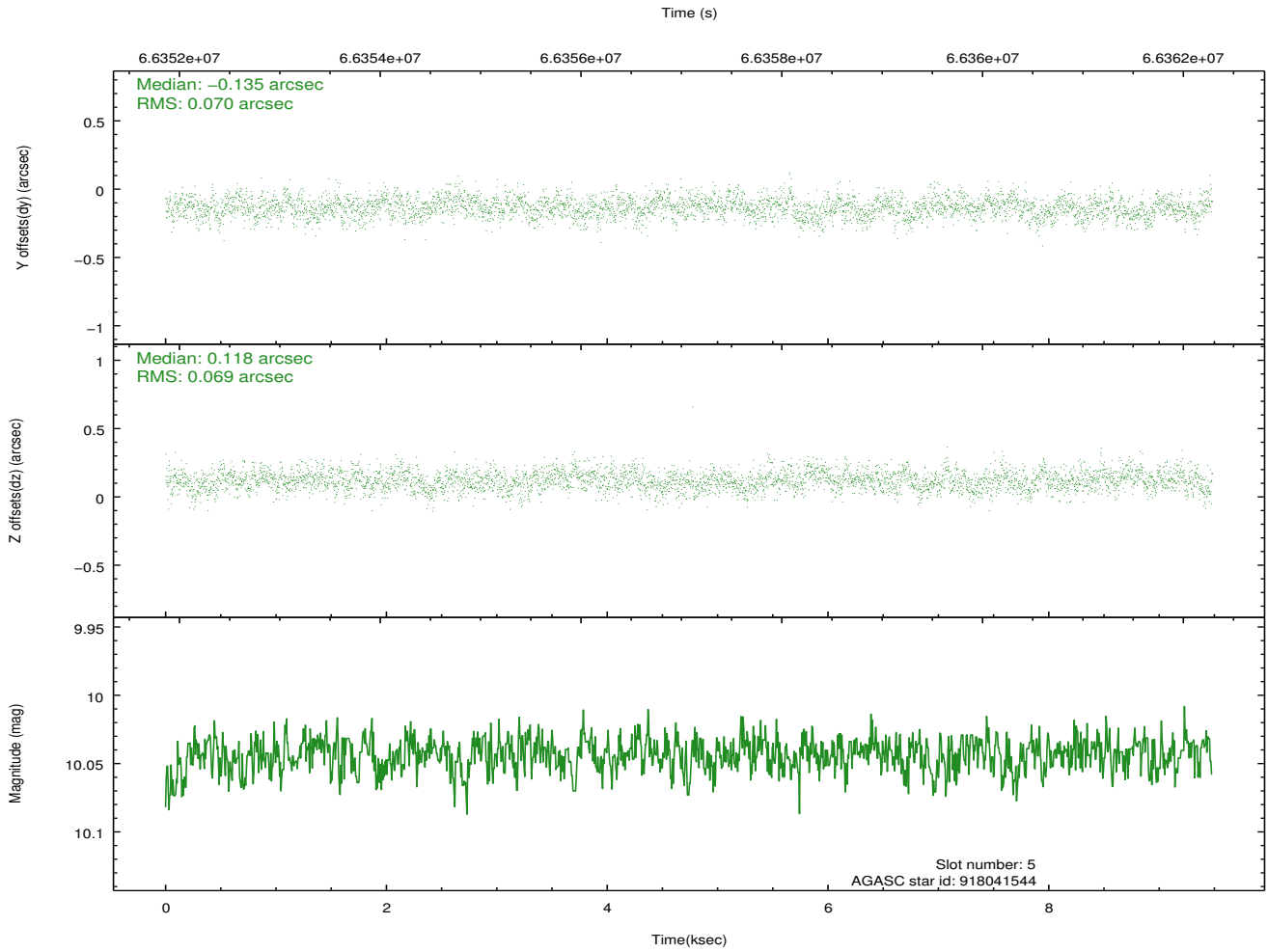
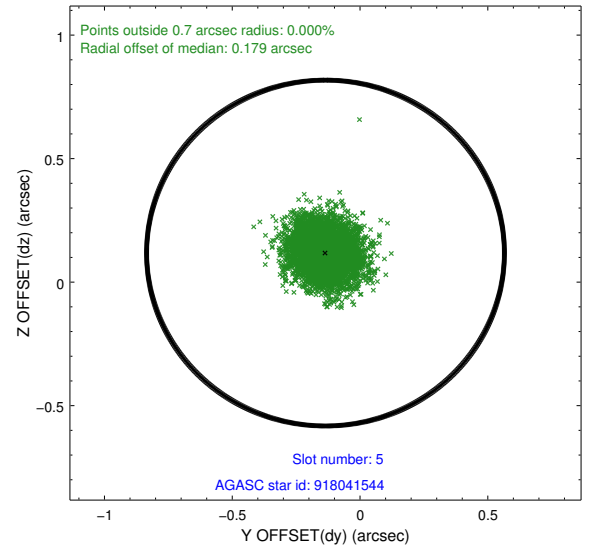
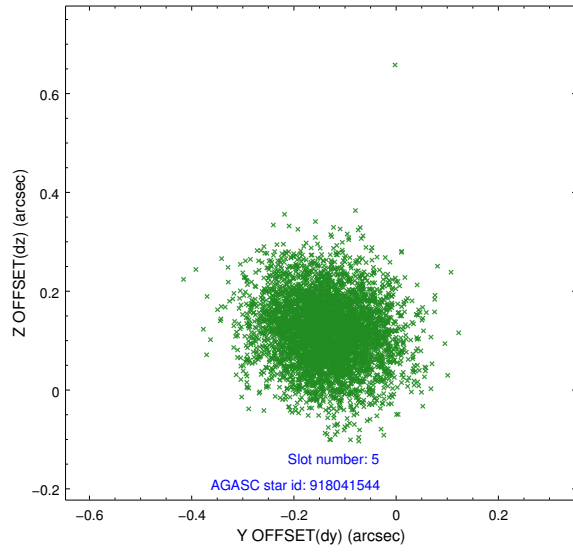
2.4.1 Slot 3



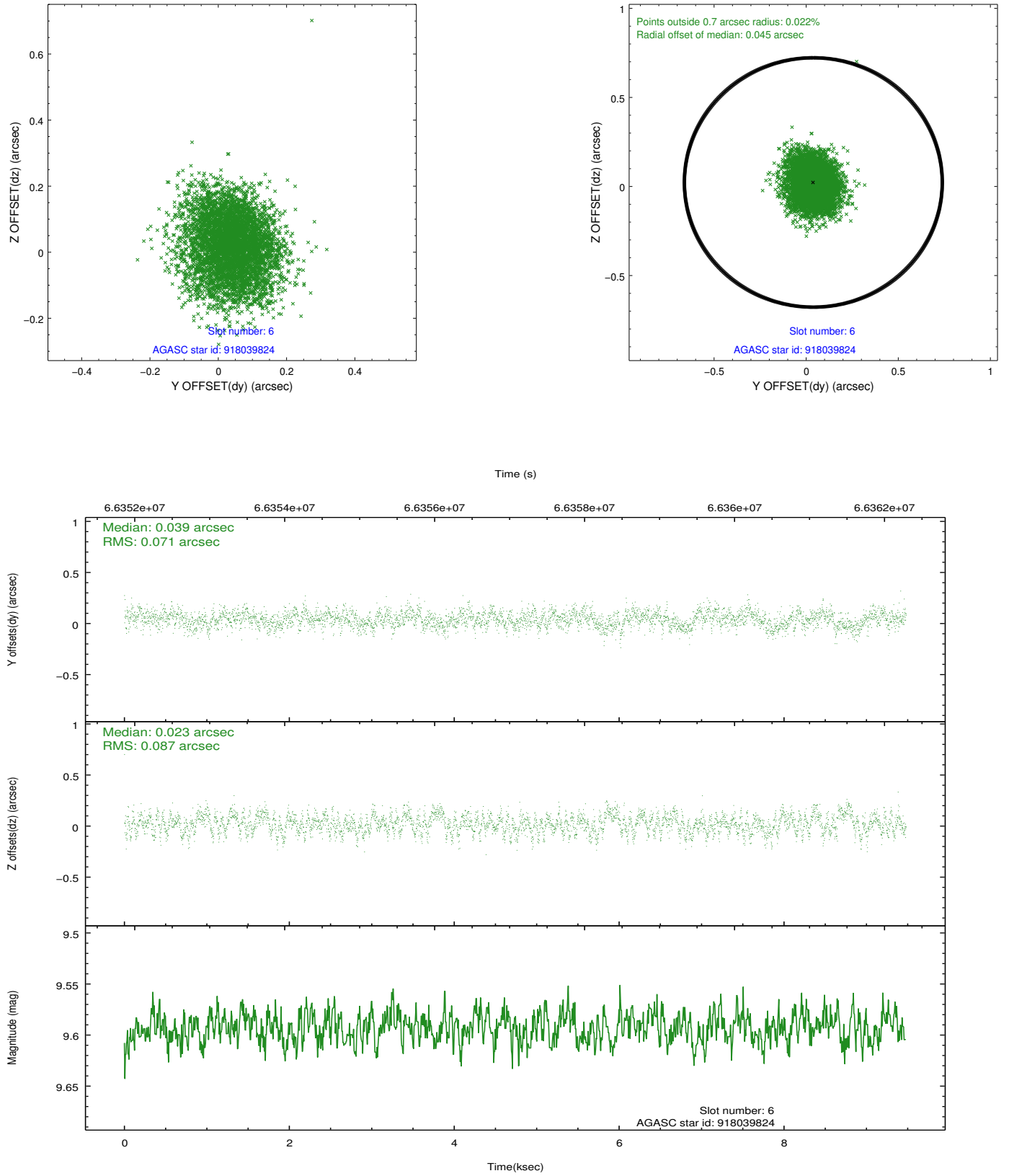
2.4.2 Slot 4



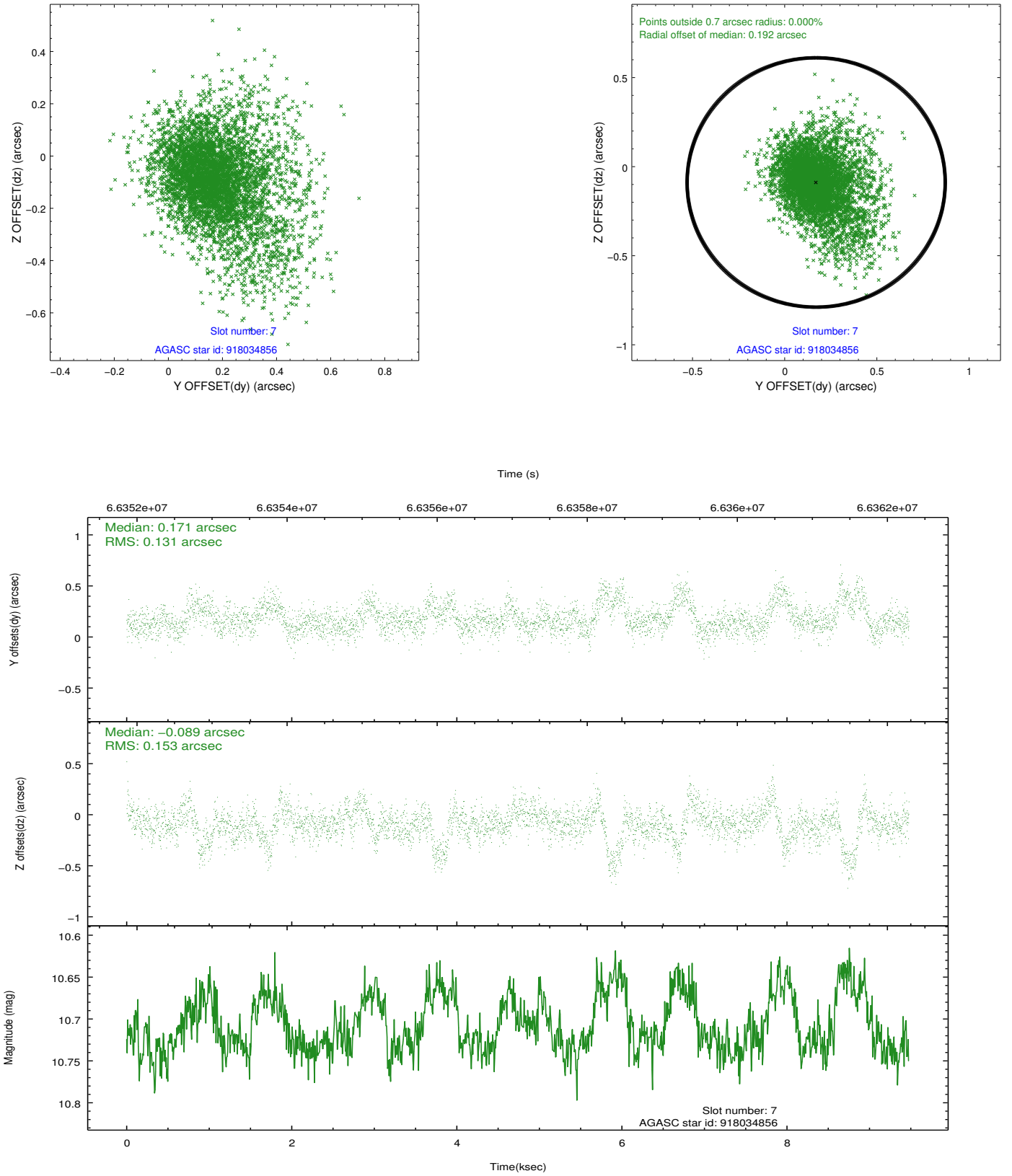
2.4.3 Slot 5



2.4.4 Slot 6

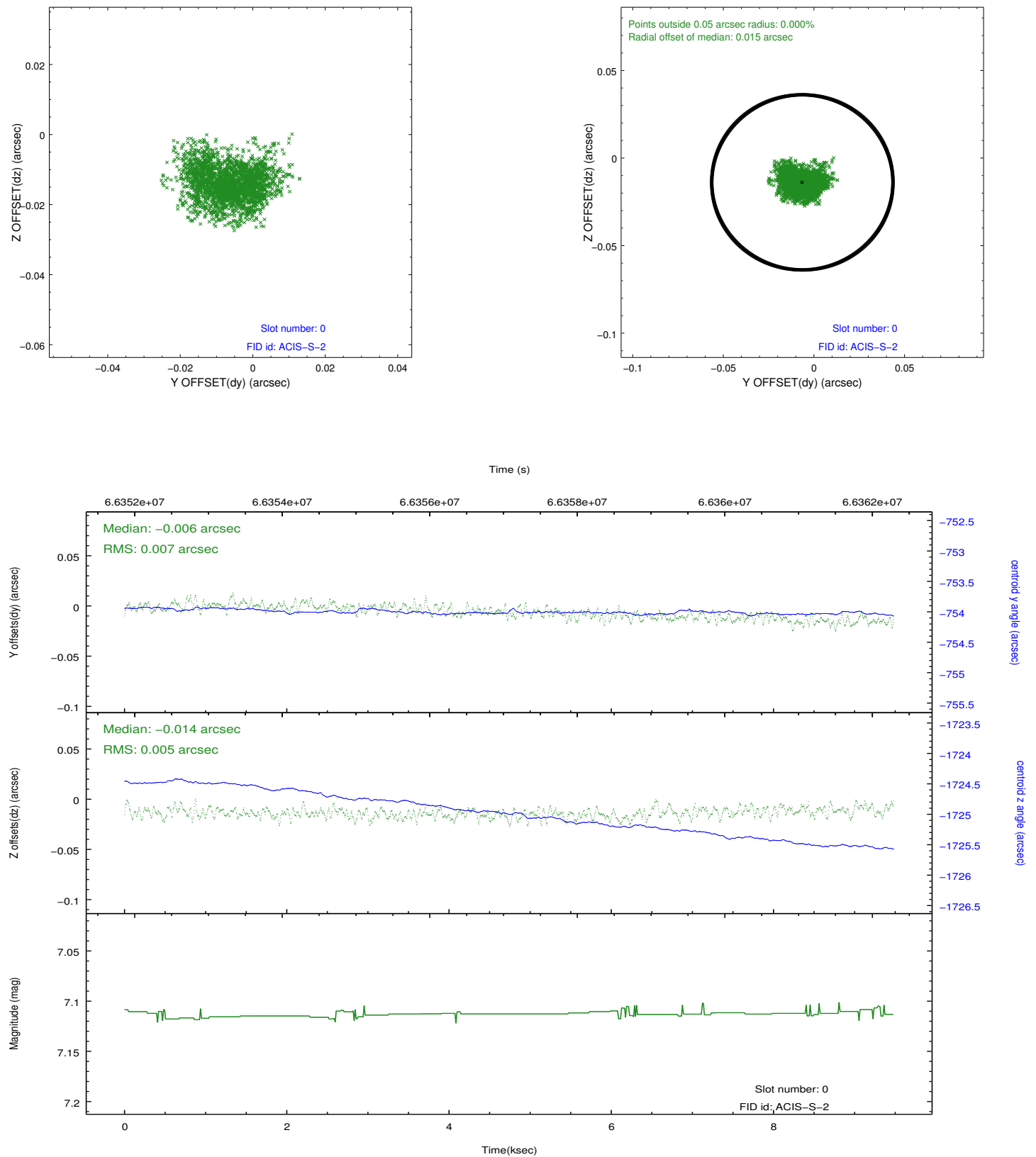


2.4.5 Slot 7

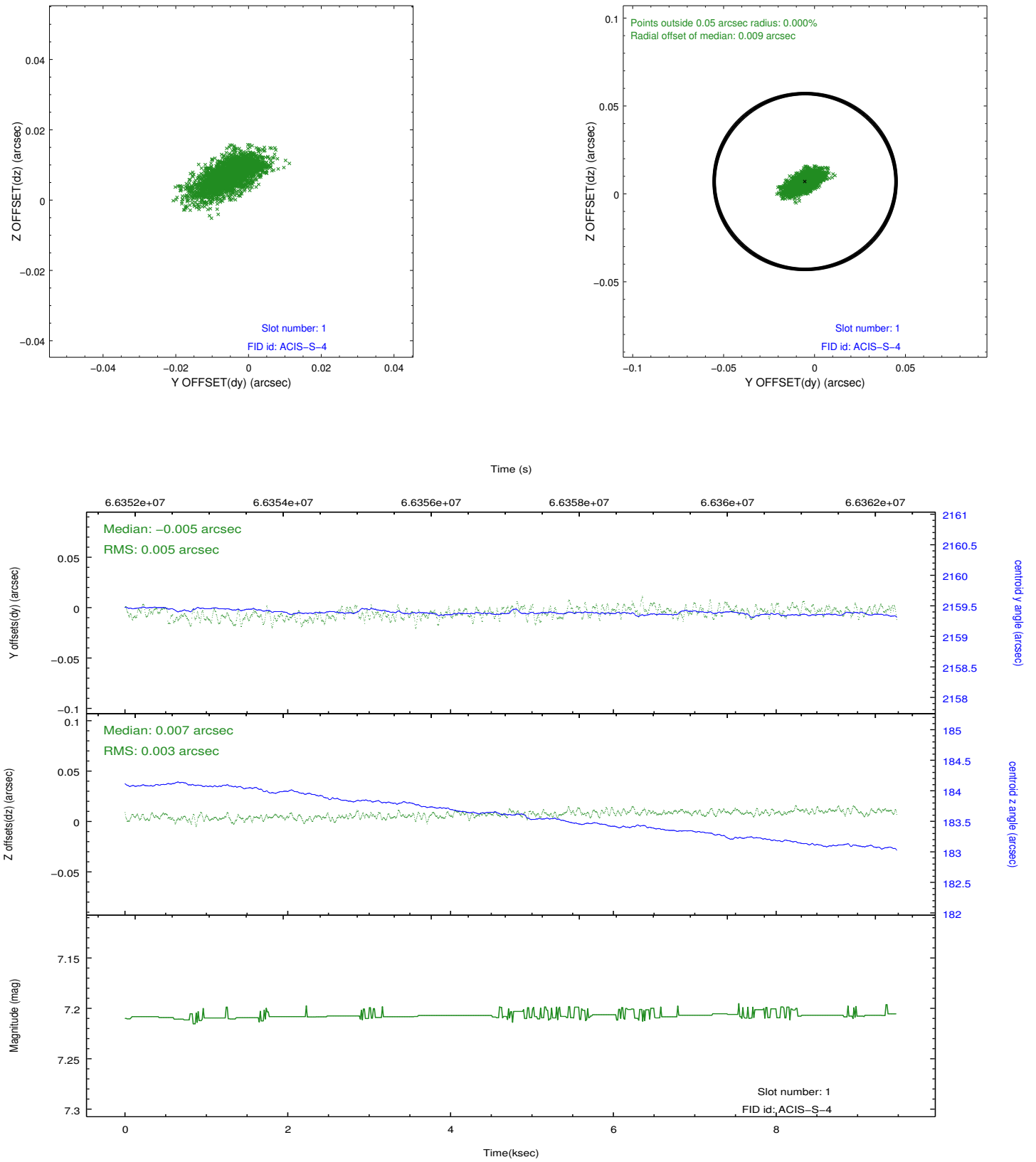


2.5 FID Slots

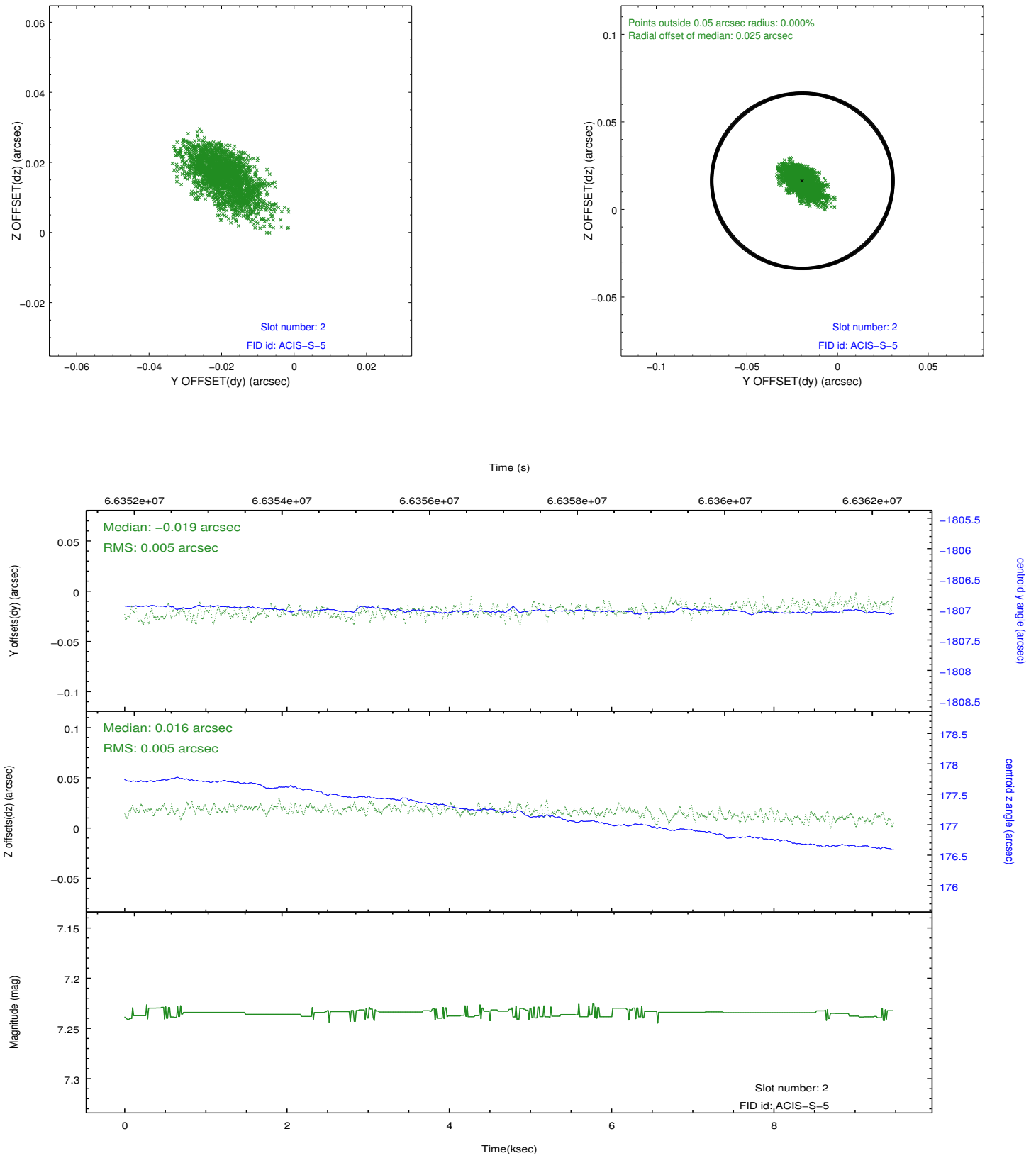
2.5.1 Slot 0



2.5.2 Slot 1



2.5.3 Slot 2



A Summary

A.1 Status

V&V Scientist	Jen Lauer
V&V Date (YYYY-MM-DD)	2012.08.23
V&V Edition	1
V&V Disposition and Status	OK
V&V Charge Time	8.72

A.2 Comments

Charge time for this ObsId remains at previous value of 8.72 ks although with the current processing the charge time would have been 8.76 ksec.