

V&V Reference Report

L2 ASCDS Version : 8.4.5

Observation 798 - L2 Version 4
Chandra X-Ray Center

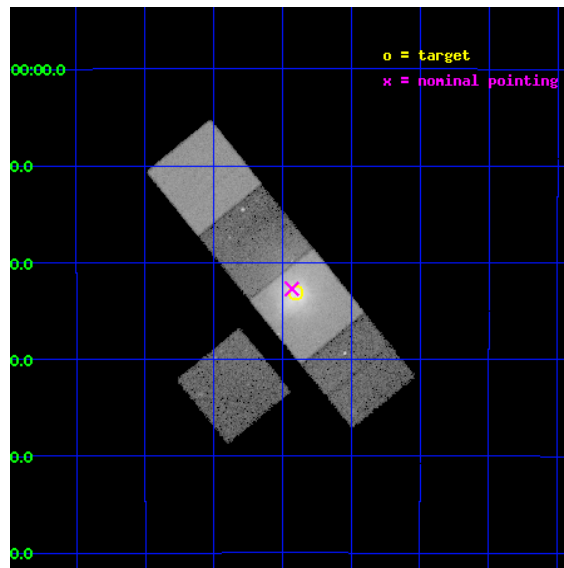
L2 Processing Date : Aug 24 2012

Contents

1	Front	2
2	OBI	3
2.1	OBI	3
2.1.1	Images	3
2.1.2	Bias	3
2.1.3	Parameters	4
2.1.4	Events	4
2.2	Compared Parameters	5
2.3	Aspect	6
2.4	Star Slots	9
2.4.1	Slot 3	9
2.4.2	Slot 4	10
2.4.3	Slot 5	11
2.4.4	Slot 6	12
2.5	FID Slots	13
2.5.1	Slot 0	13
2.5.2	Slot 1	14
2.5.3	Slot 2	15
A	Summary	16
A.1	Status	16
A.2	Comments	16

1 Front

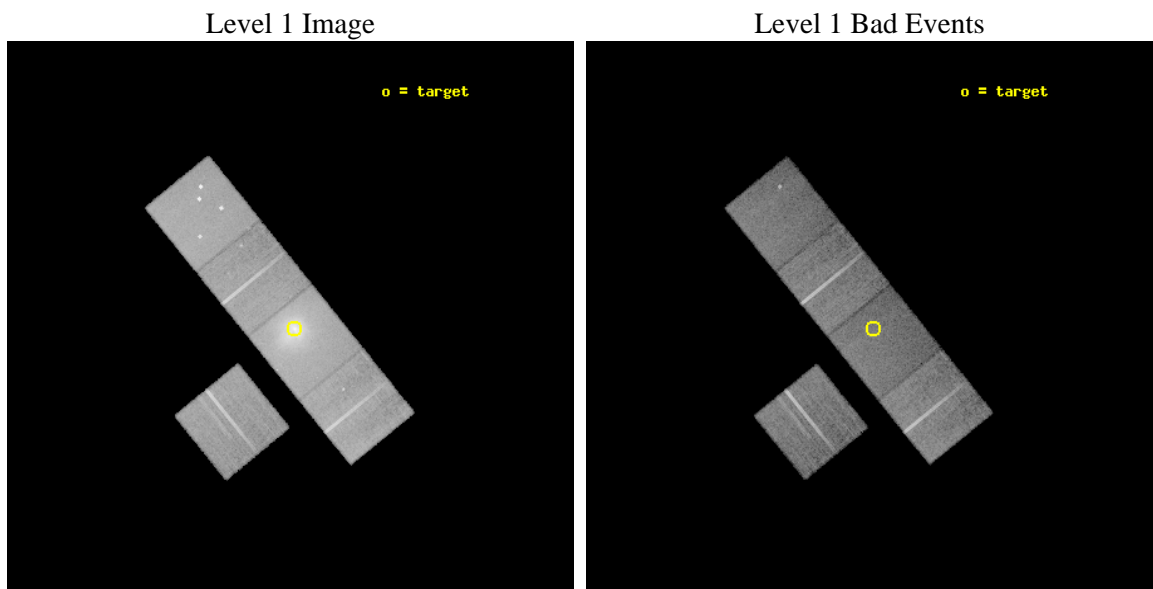
seq_num	600101	Sequence number
obs_id	798	Observation id
title	THE INTERPLAY BETWEEN THE DIFFERENT COMPONENTS OF THE INTERSTELLAR MEDIUM OF ELLIPTICAL GALAXIES	Proposal title
observer	Dr. Paul Goudfrooij	Principal investigator
object	NGC 5044	Source name
dtcycle	0	
cycle	P	events from which exps? Prim/Second/Both
ra_targ	198.85	Observer's specified target RA [deg]
dec_targ	-16.385111	Observer's specified target Dec [deg]
ra_nom	198.85799340121	Nominal RA [deg]
dec_nom	-16.378614364015	Nominal Dec [deg]
roll_nom	50.975324586907	Nominal Roll [deg]
revision	4	Processing version of data
ontime	20726.359078974	Sum of GTIs [s]
livetime	20463.9094404	Livetime [s]
ontime3	20726.359049052	Sum of GTIs [s]
ontime5	20726.359049052	Sum of GTIs [s]
ontime6	20723.11805889	Sum of GTIs [s]
ontime7	20726.359078974	Sum of GTIs [s]
ontime8	20723.118078813	Sum of GTIs [s]
l2events	378406	Number of level 2 events



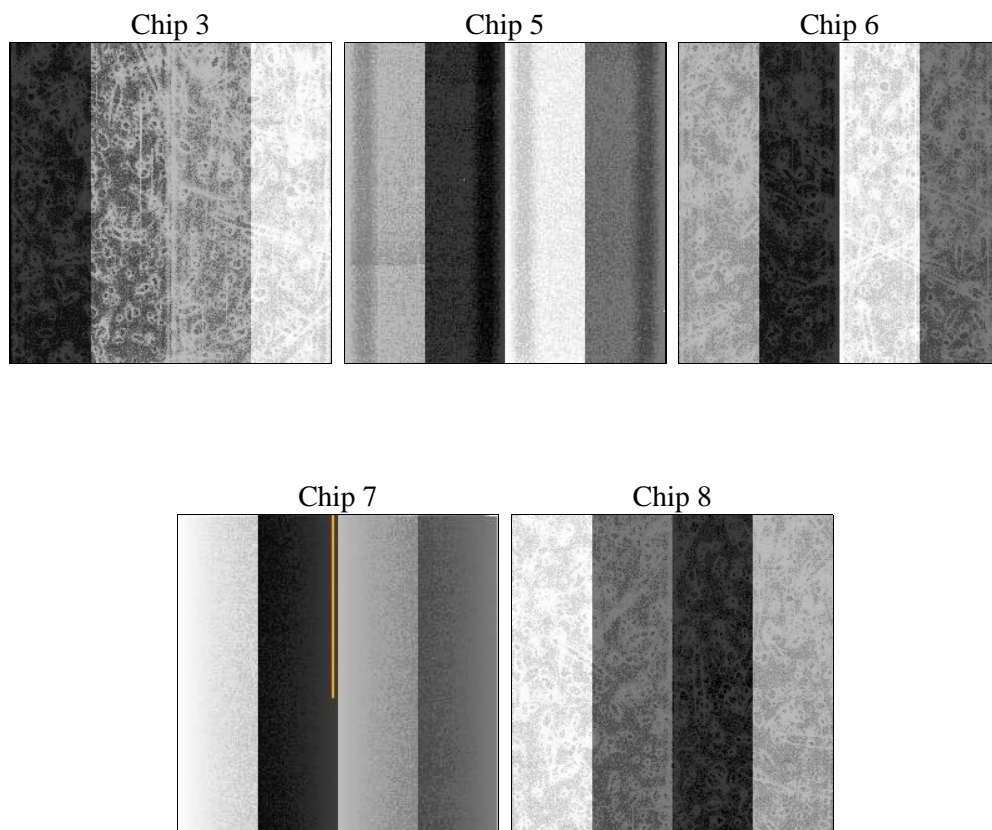
2 OBI

2.1 OBI

2.1.1 Images



2.1.2 Bias



2.1.3 Parameters

obi_num	0	Obi number	sched_exp_time	20298.161000	[s] Scheduled observation exposure time
ascdsver	8.4.5	Processing system revision	ontime	20726.359078974	Sum of GTIs [s]
caldsver	4.5.1.1	 	ontime3	20726.359049052	Sum of GTIs [s]
date	2012-08-24T14:06:54	Date and time of file creation	ontime5	20726.359049052	Sum of GTIs [s]
revision	4	Processing version of data	ontime6	20723.11805889	Sum of GTIs [s]
			ontime7	20726.359078974	Sum of GTIs [s]
			ontime8	20723.118078813	Sum of GTIs [s]
			l1events	1062550	Number of level 1 events

2.1.4 Events

	ccd 3	ccd 5	ccd 6	ccd 7	ccd 8
level 1 events	154018	208983	171264	334080	194205
rejected events	134856	107164	139718	105784	153886
rejected %	87%	51%	81%	31%	79%

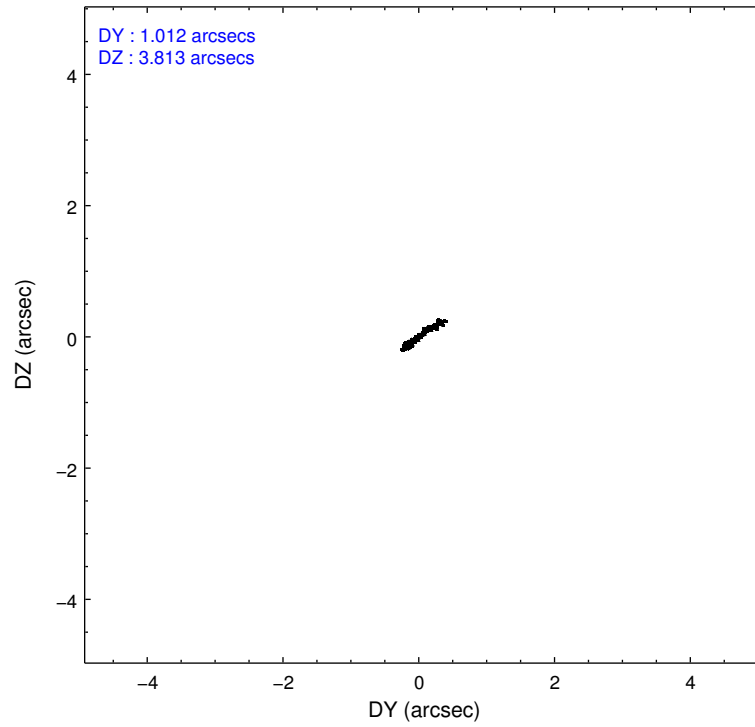
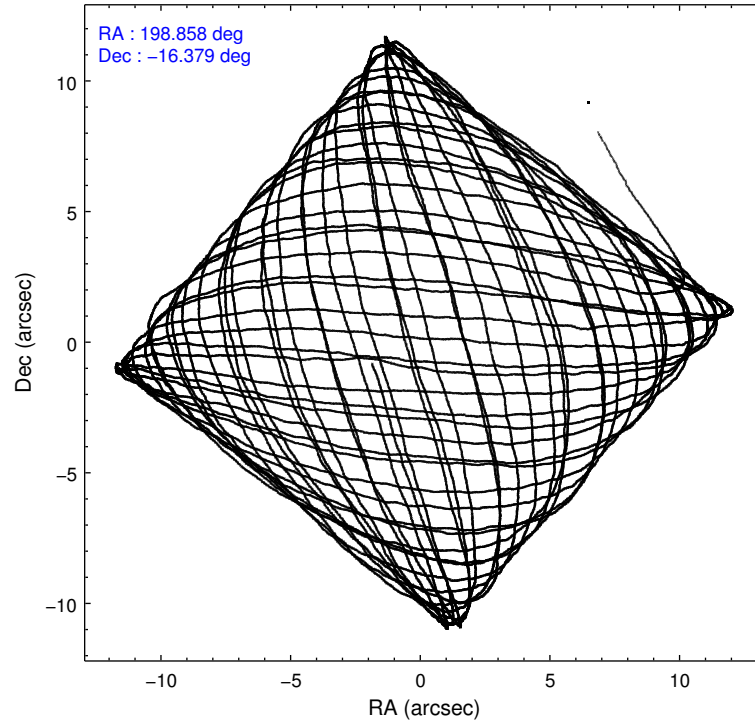
	ccd 3	ccd 5	ccd 6	ccd 7	ccd 8
grade 0 events	10256	20008	20400	59609	15771
	6%	9%	11%	17%	8%
grade 1 events	88	1151	124	203	121
	0%	0%	0%	0%	0%
grade 2 events	3257	27951	4431	56888	8089
	2%	13%	2%	17%	4%
grade 3 events	1677	4565	1946	25661	3989
	1%	2%	1%	7%	2%
grade 4 events	1550	4349	1966	25391	3678
	1%	2%	1%	7%	1%
grade 5 events	4948	15047	5751	17782	7072
	3%	7%	3%	5%	3%
grade 6 events	2753	46697	3206	63607	9490
	1%	22%	1%	19%	4%
grade 7 events	129489	89215	133440	84939	145995
	84%	42%	77%	25%	75%

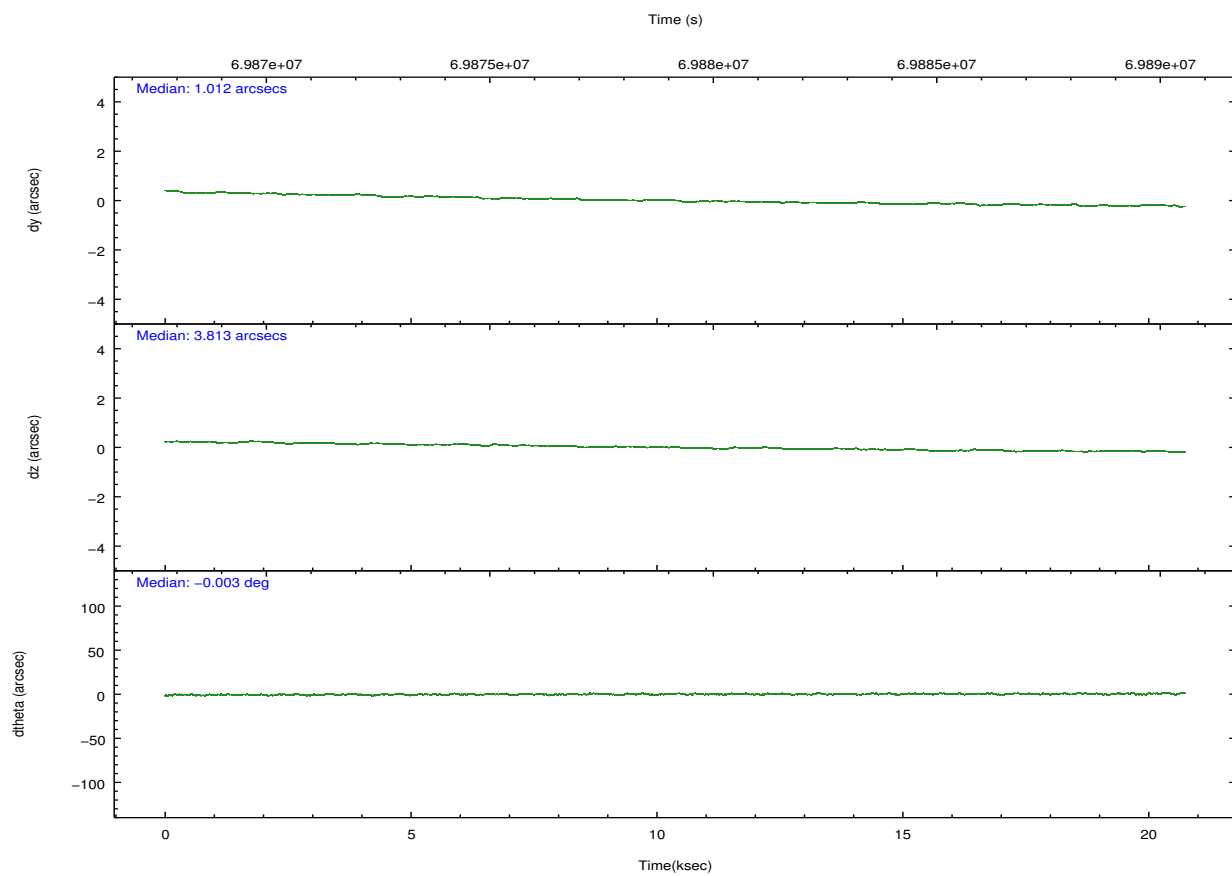
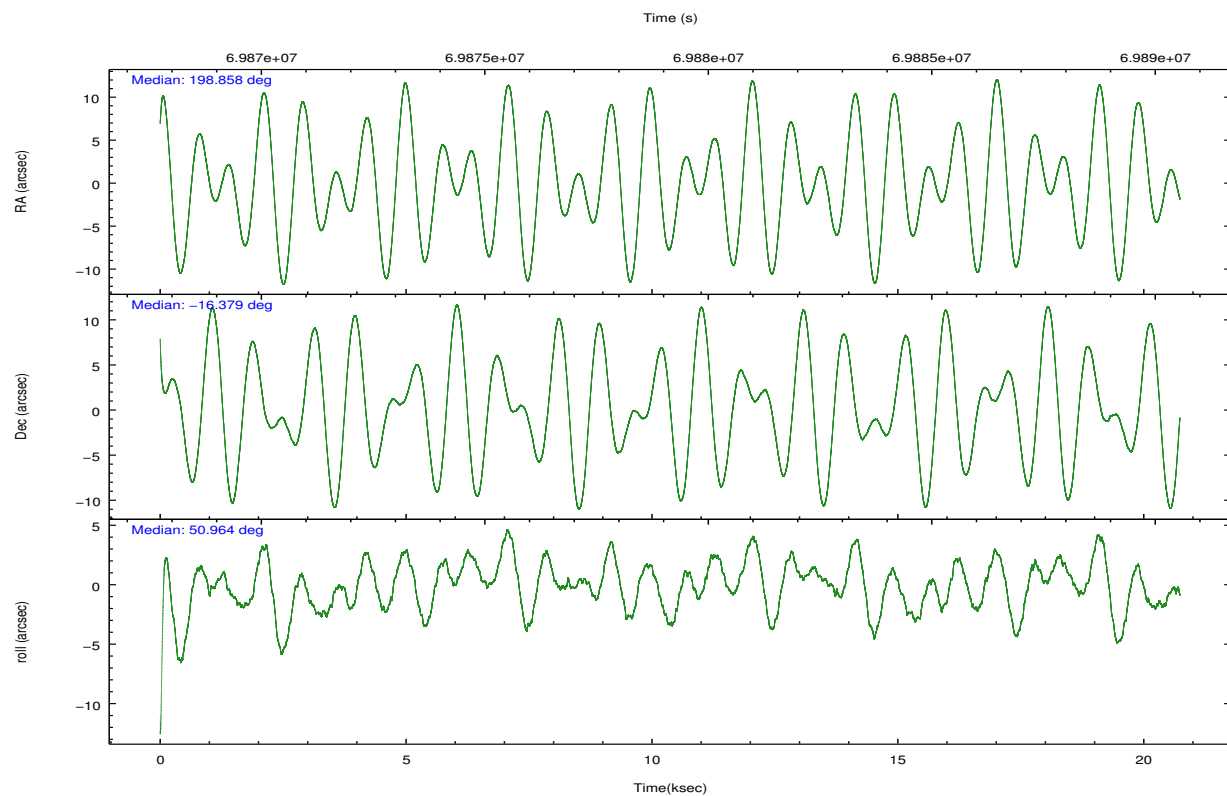
2.2 Compared Parameters

Parameter	Planned	Actual
Instrument	ACIS	ACIS
Detector	ACIS-35678	ACIS-35678
Grating	NONE	NONE
Data mode	FAINT	FAINT
Observation mode	POINTING	POINTING
[deg] Pointing RA	198.853555	198.8579934012091
[deg] Pointing Dec	-16.405731	-16.378614364015
[deg] Pointing Roll	50.817447	50.97532458690657
[mm] SIM focus pos	-0.684267	-0.6828225247311905
[mm] SIM defocus	0	0.001444936568705701
[mm] SIM translation stage pos	-190.132523	-190.1425803651734
[mm] SIM translation stage offset	0	0.01005778216563158
[s] Observation start time (MET)	69869214.184000	69867762.04930601
Observation start date	2000-03-19T16:05:50	2000-03-19T15:42:42
[s] Observation end time (MET)	69889512.184000	69890308.462631
Observation end date	2000-03-19T21:44:08	2000-03-19T21:58:28
Read mode	TIMED	TIMED

Parameter	Planned	Actual
Obspar format version number	7	7
Obspar file type	PREDICTED	ACTUAL
Obspar update status	NONE	UPDATED
Number of optional ACIS chips dropped	0	0
On-chip summing requested	N	N
Subarray requested	NONE	NONE
Alternating exposures requested	N	N
[s] Primary exposure time	0.000000	3.2

2.3 Aspect



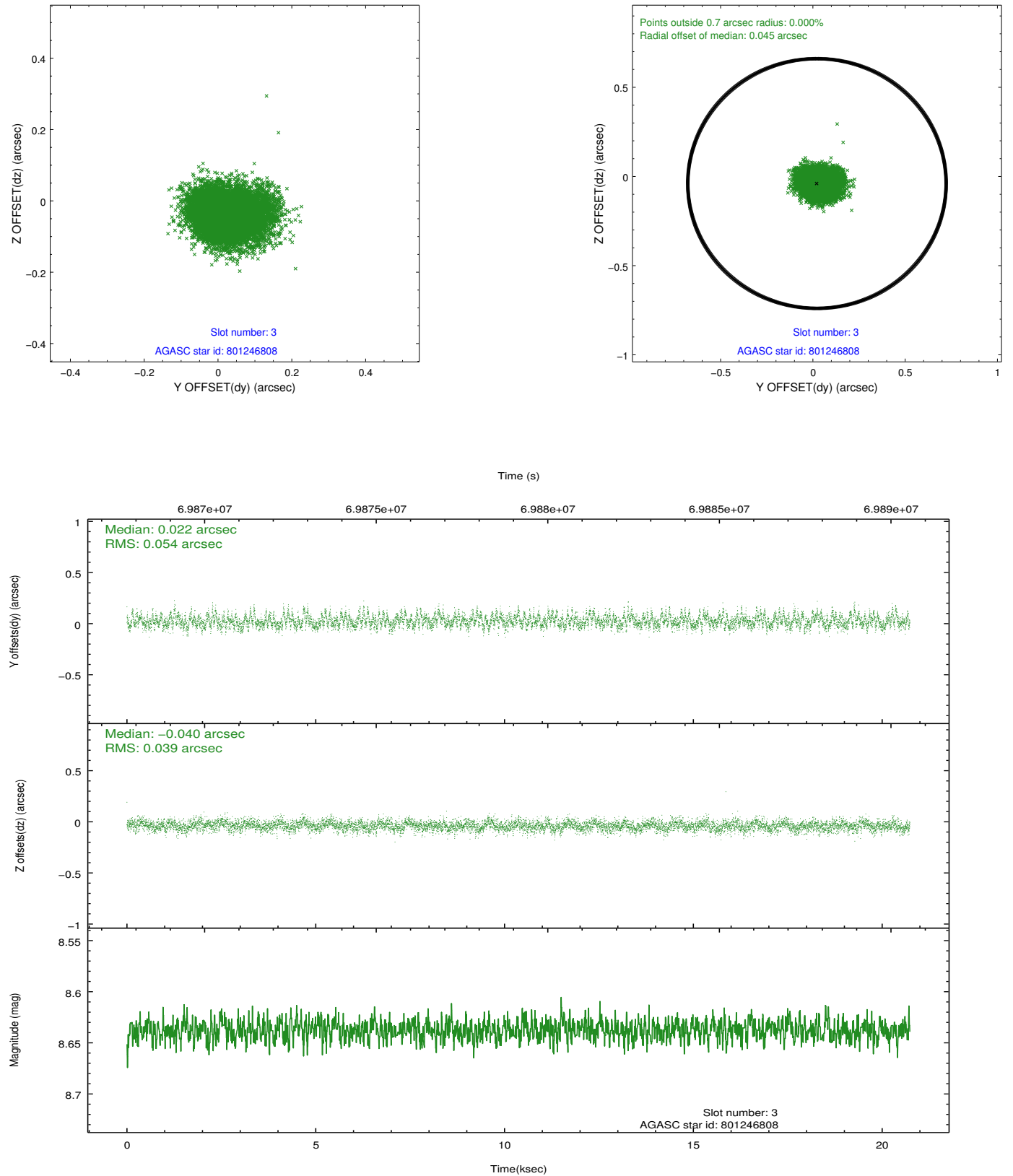


Slot Statistics

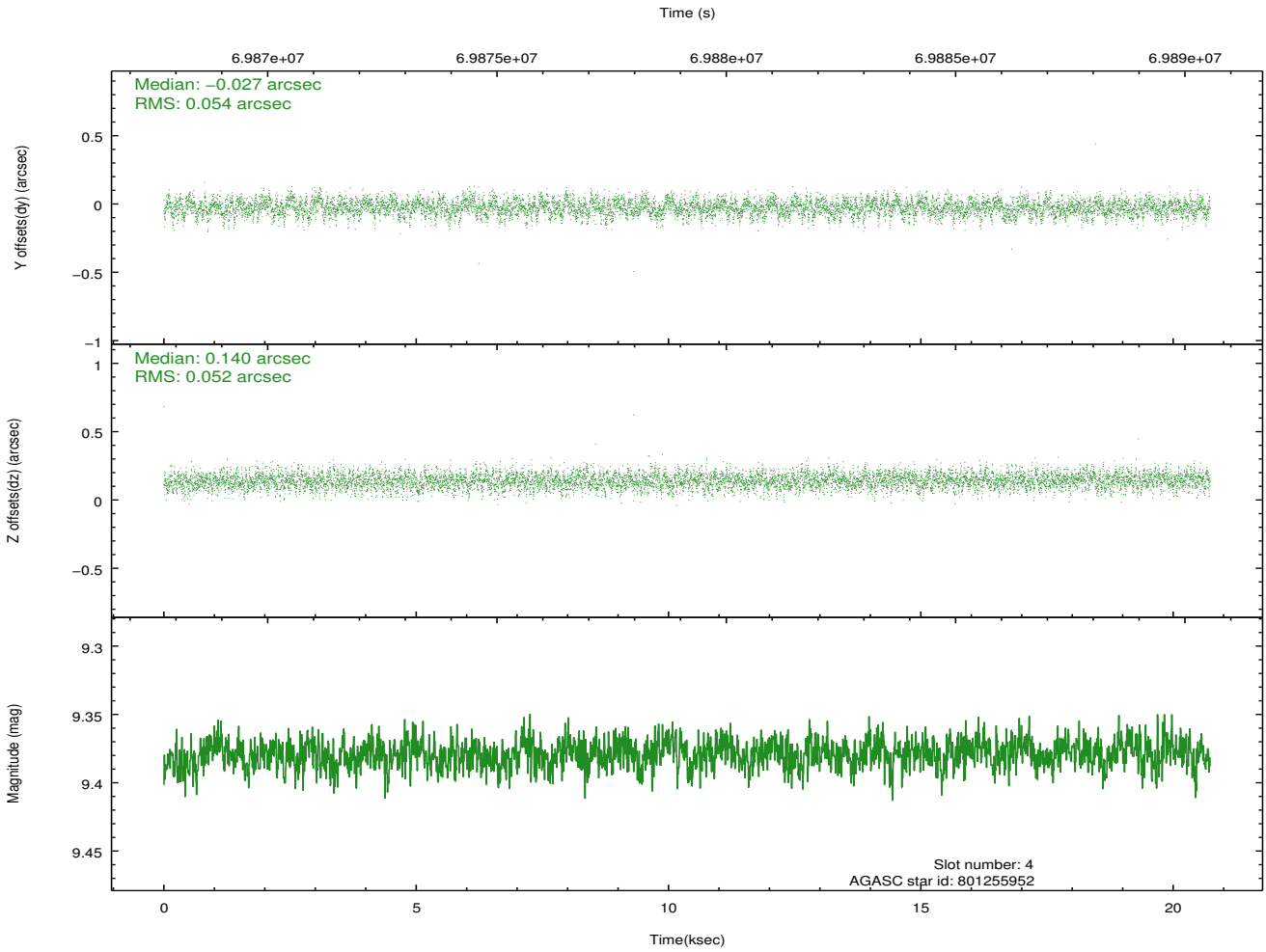
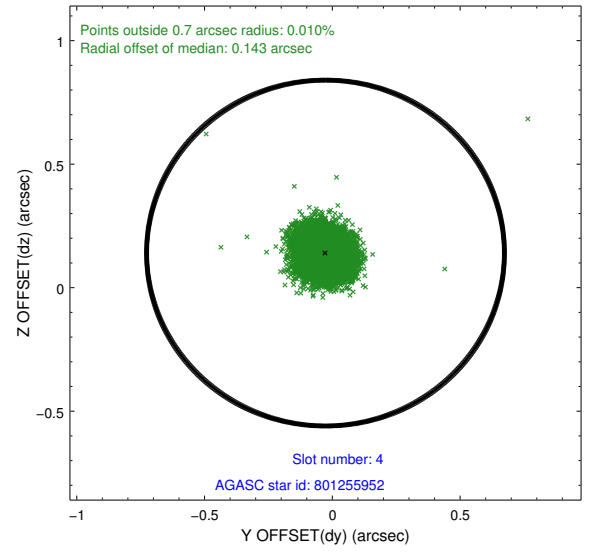
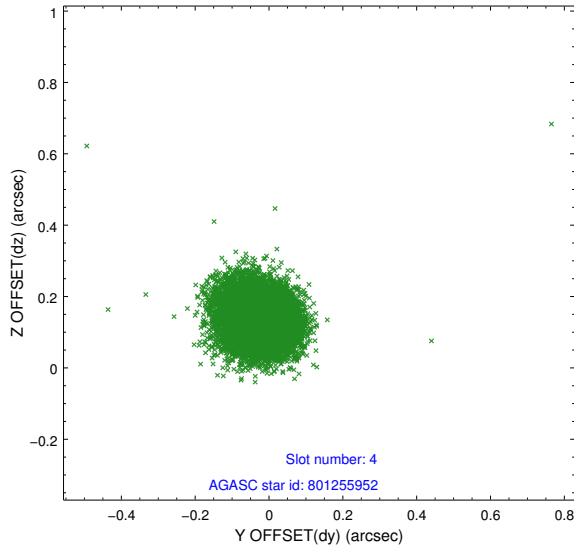
slot	status	id	mag	n_pts	med_dy	med_dz	dr1	dr2	ra	dec	mean_y	mean_z
0	FID	ACIS-S-2	7.11	5057	-0.010	-0.018	0.008	0.013	0.000000	0.000000	-753.67	-1724.85
1	FID	ACIS-S-4	7.20	5056	0.008	0.010	0.009	0.015	0.000000	0.000000	2159.59	183.41
2	FID	ACIS-S-5	7.24	5056	-0.030	0.017	0.008	0.013	0.000000	0.000000	-1806.26	177.39
3	GUIDE	801246808	8.64	10113	0.022	-0.040	0.070	0.116	197.970492	-16.513707	-2233.23	2112.97
4	GUIDE	801255952	9.38	10108	-0.027	0.140	0.079	0.126	199.159726	-16.764729	-336.24	-1634.20
5	GUIDE	801246920	9.58	10112	0.010	-0.097	0.078	0.129	198.279277	-16.235725	-782.95	1923.73
6	GUIDE	801249680	9.78	10107	-0.009	-0.004	0.091	0.149	198.773831	-16.248349	264.17	572.36
7	UNUSED		0.00	0	0.000	0.000	0.000	0.000	0.000000	0.000000	0.00	0.00

2.4 Star Slots

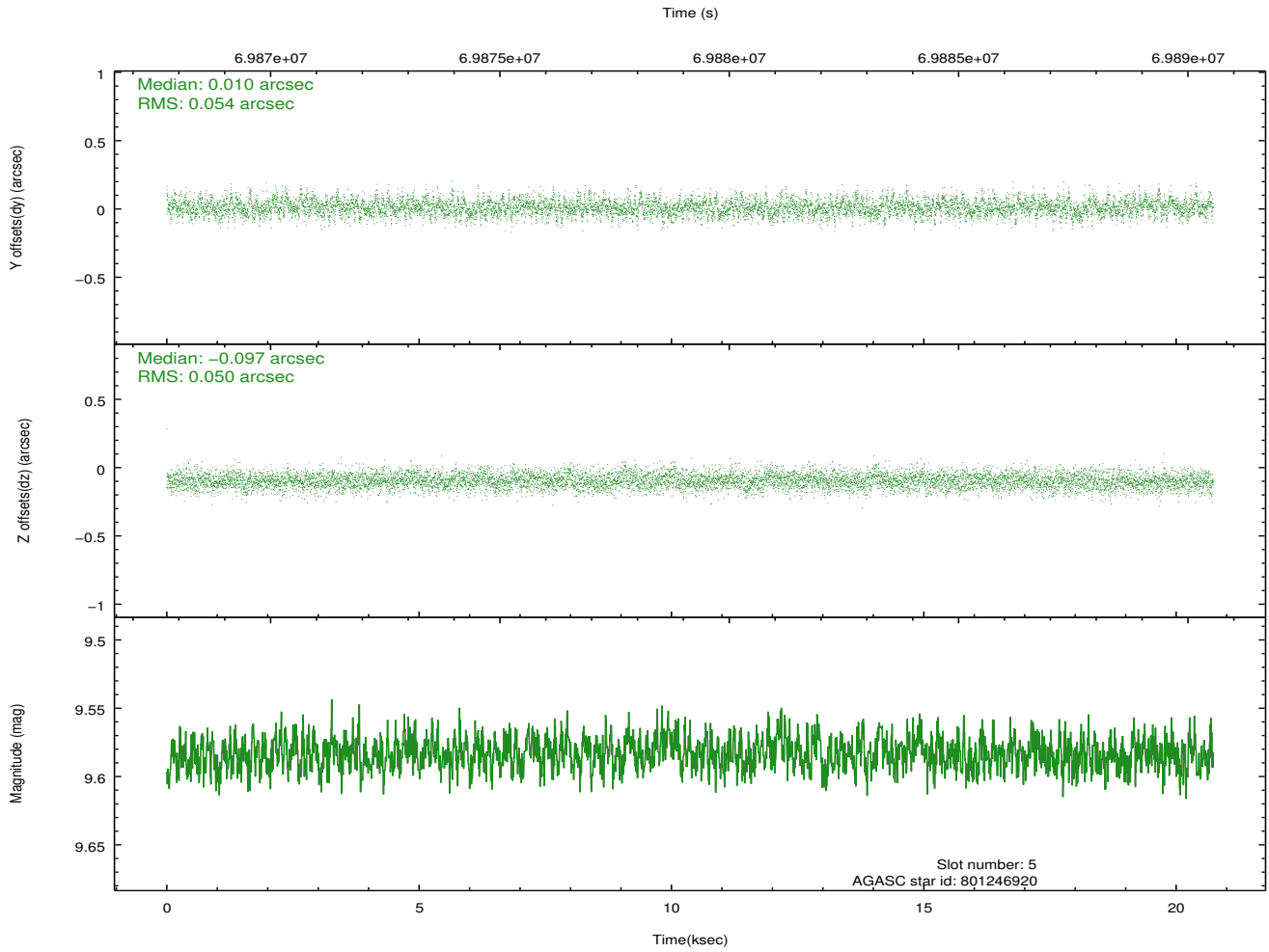
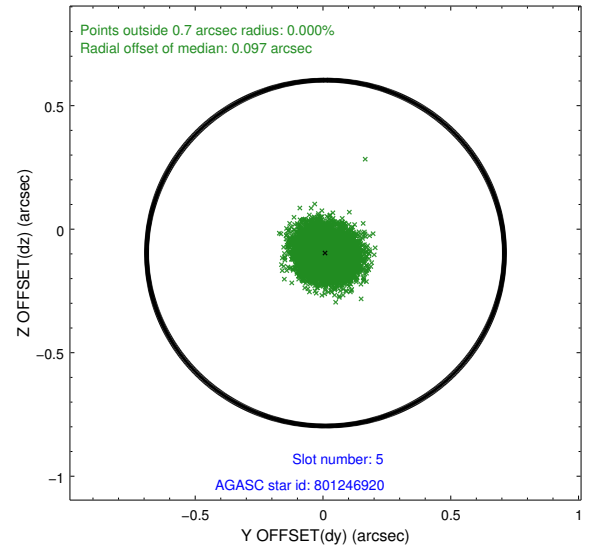
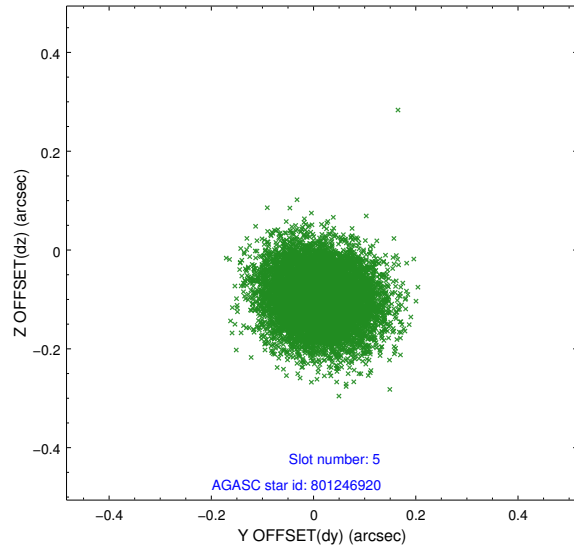
2.4.1 Slot 3



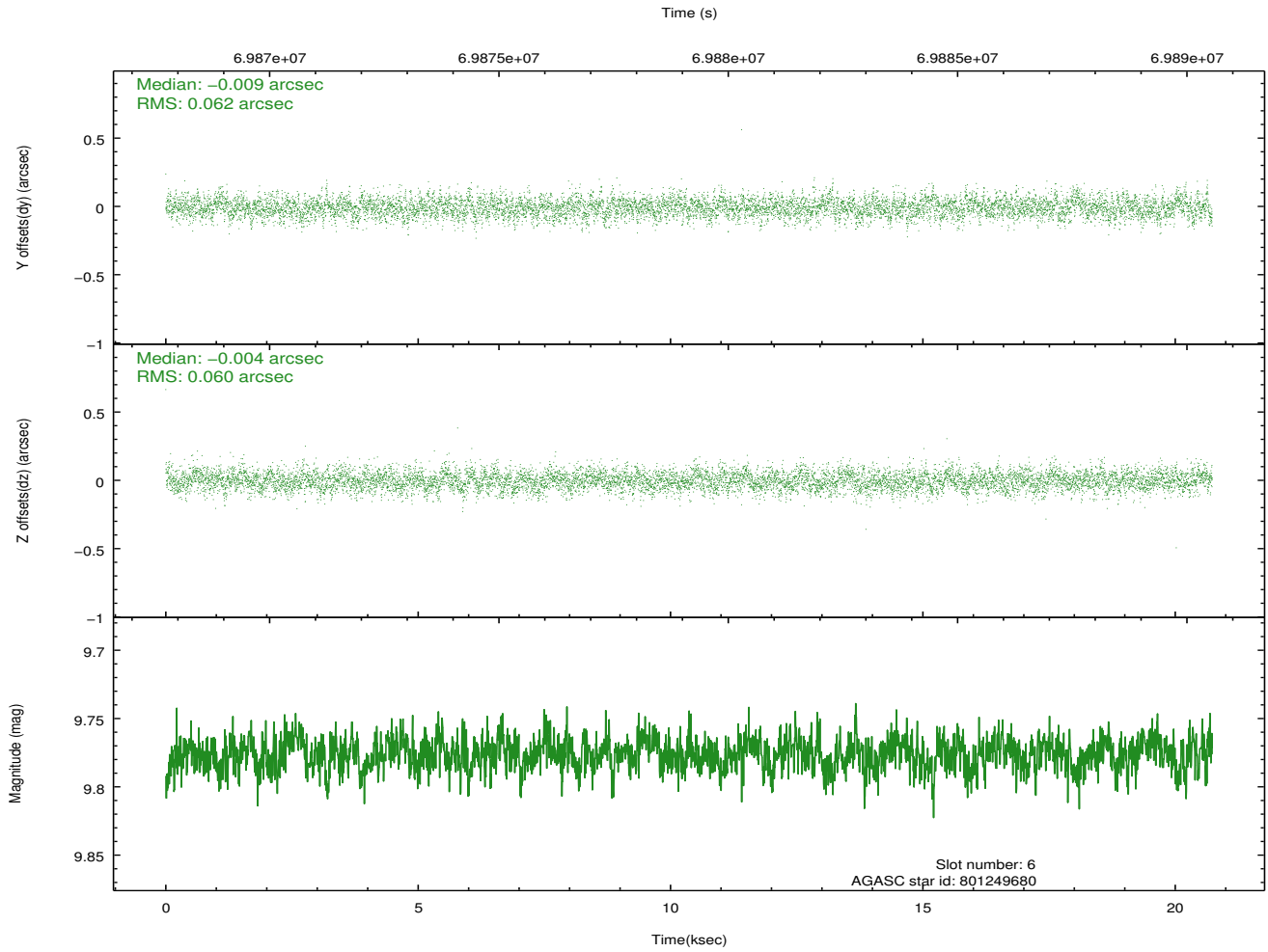
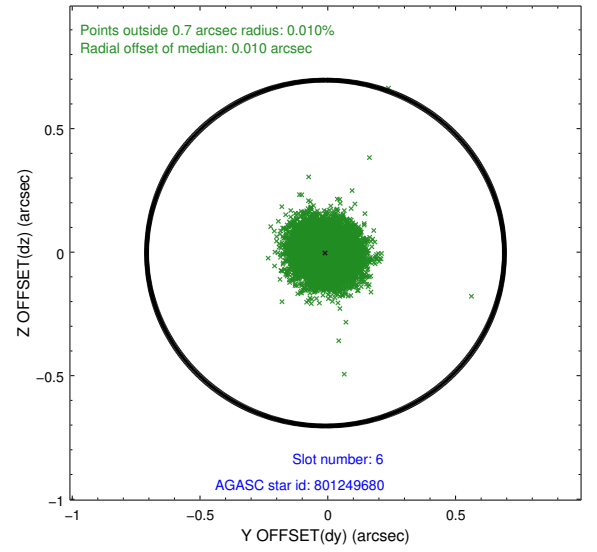
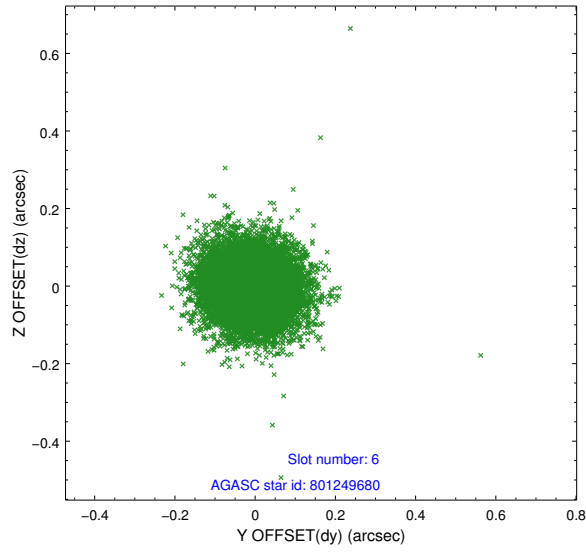
2.4.2 Slot 4



2.4.3 Slot 5

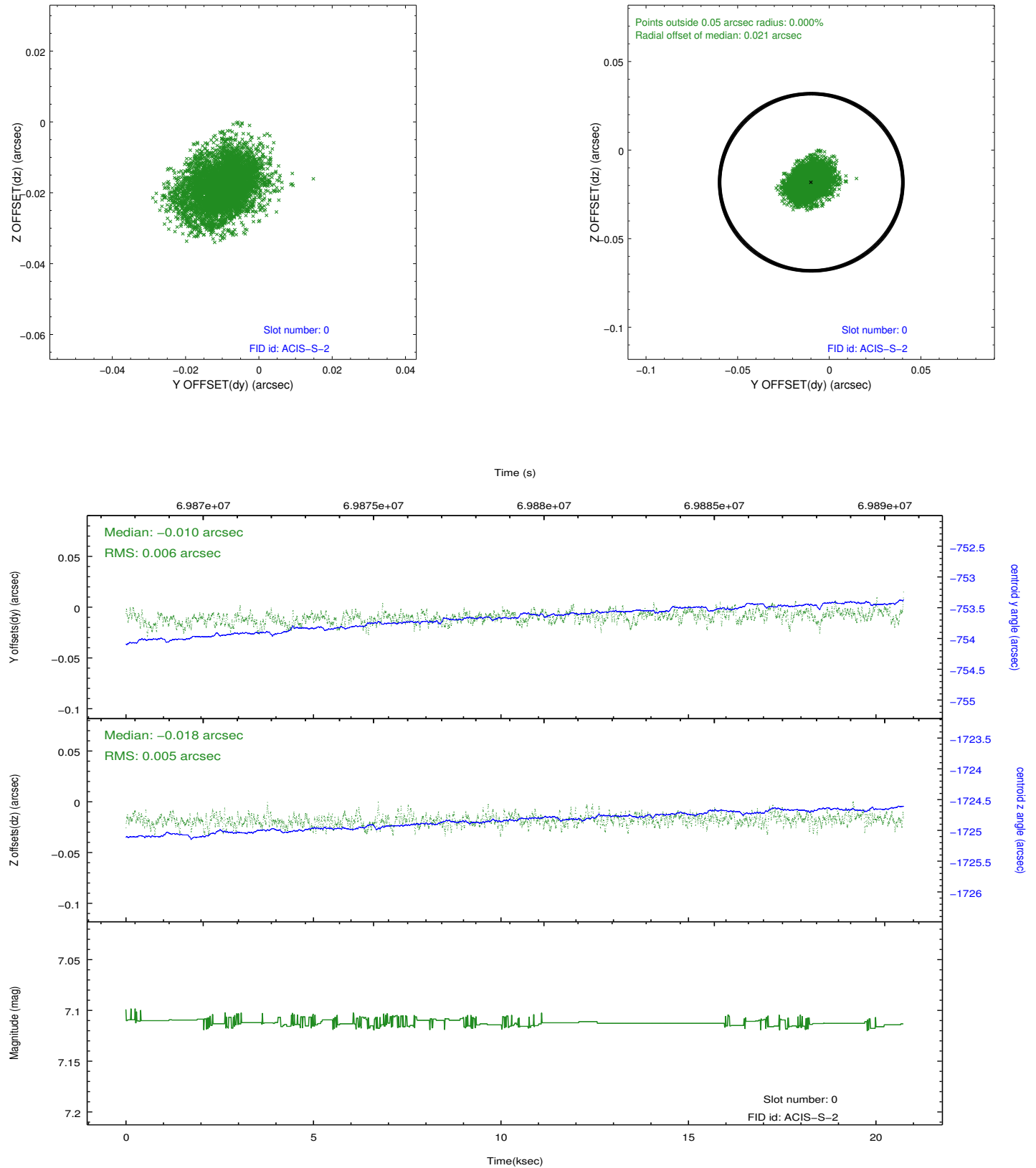


2.4.4 Slot 6

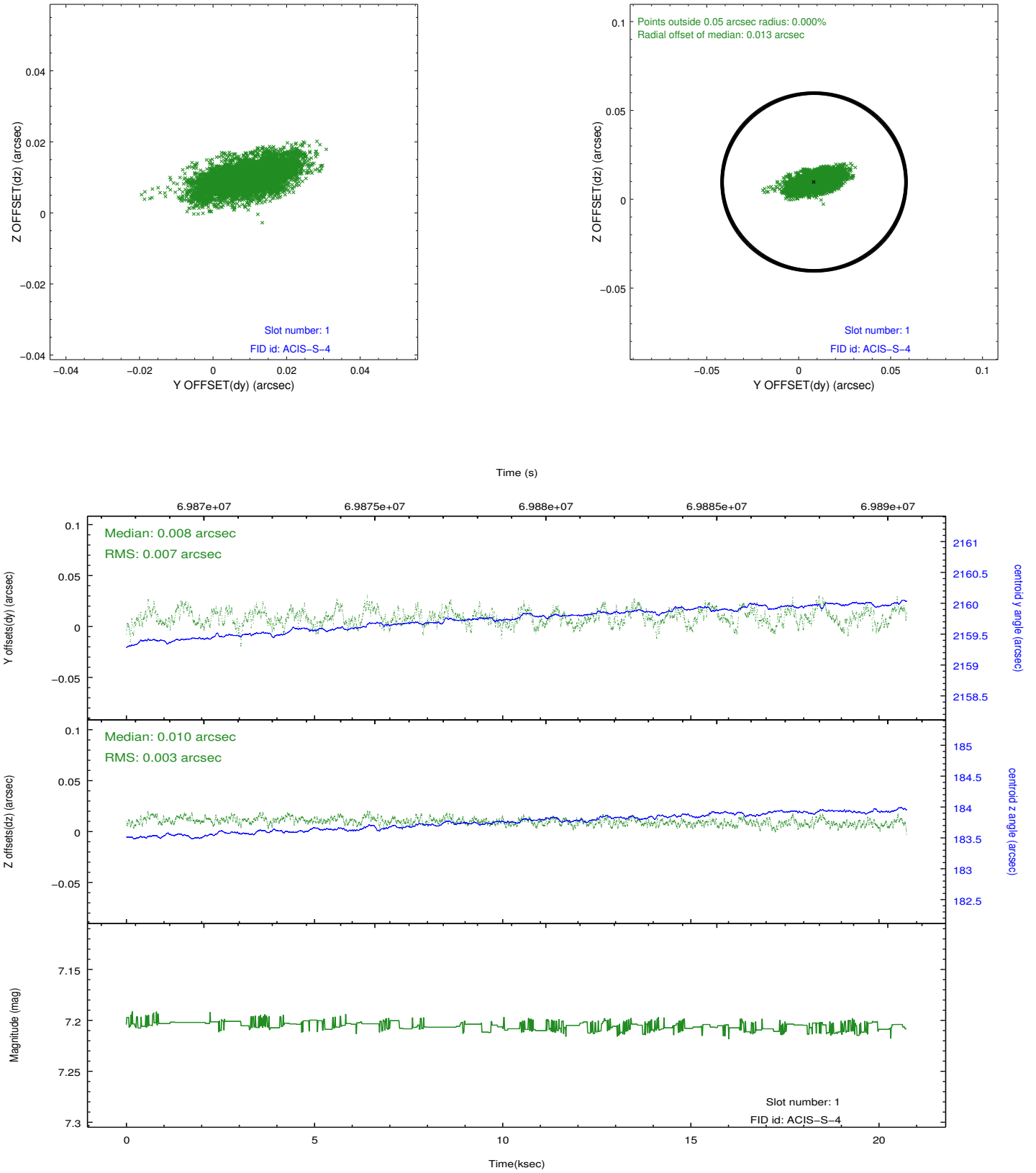


2.5 FID Slots

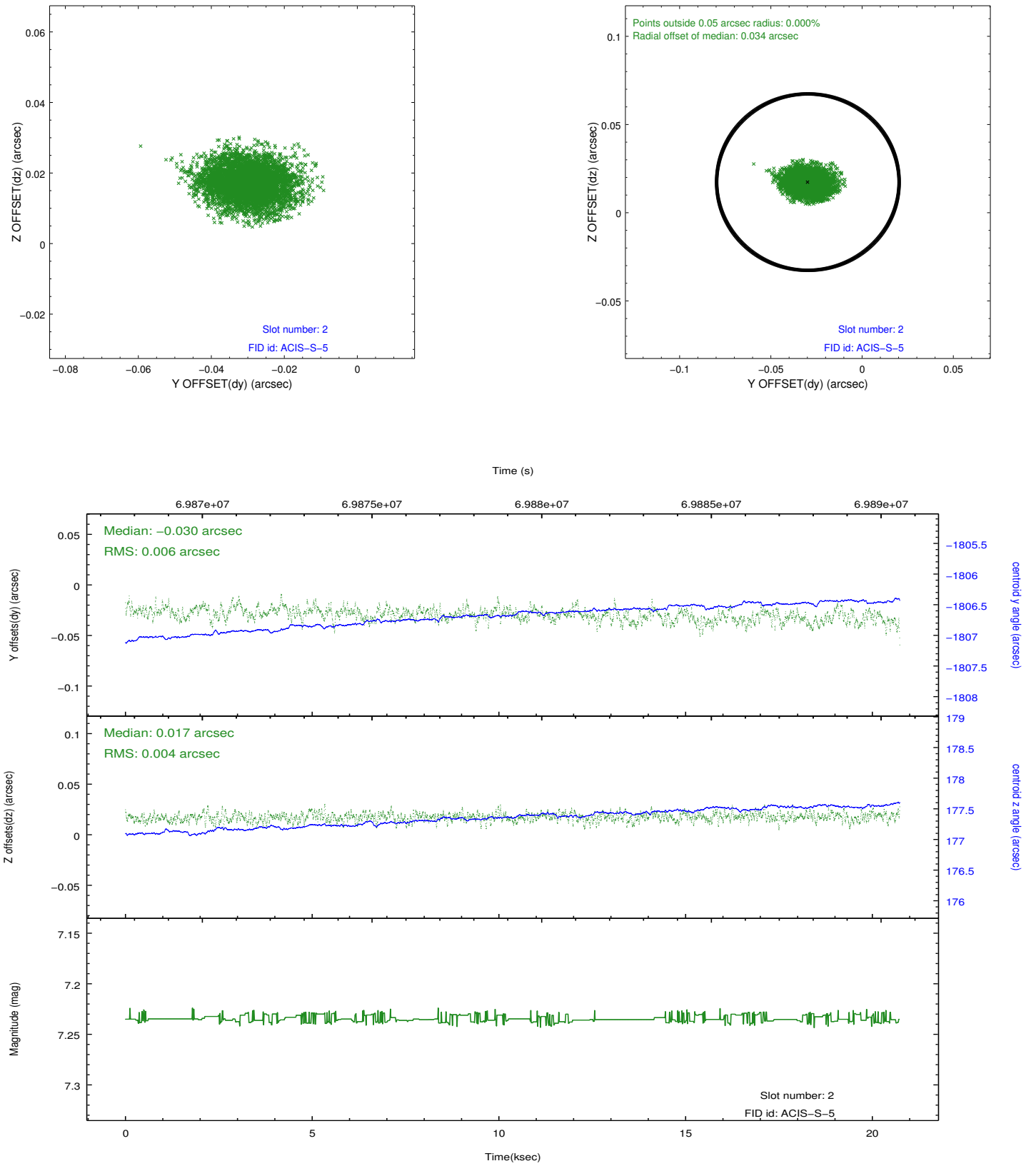
2.5.1 Slot 0



2.5.2 Slot 1



2.5.3 Slot 2



A Summary

A.1 Status

V&V Scientist	Jen Lauer
V&V Date (YYYY-MM-DD)	2012.08.27
V&V Edition	1
V&V Disposition and Status	OK
V&V Charge Time	20.726

A.2 Comments