

V&V Reference Report

L2 ASCDS Version : 7.6.10

Observation 314 - L2 Version 001
Chandra X-Ray Center

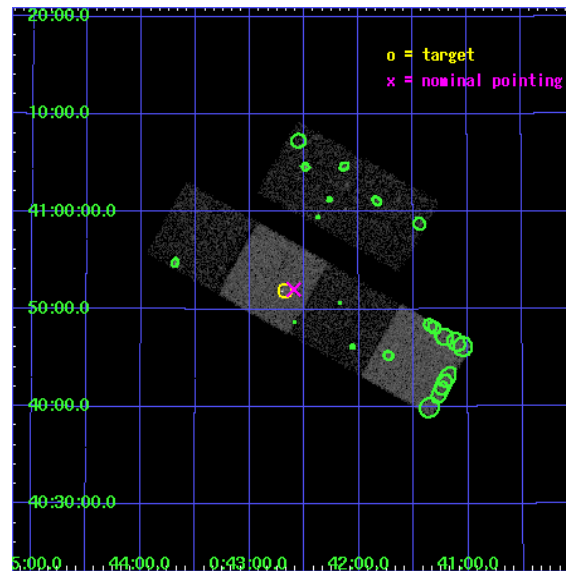
L2 Processing Date : Jun 12 2007

Contents

1	Front	2
2	OBI	3
2.1	OBI	3
2.1.1	Images	3
2.1.2	Bias	3
2.1.3	Parameters	4
2.1.4	Events	4
2.2	Compared Parameters	5
2.3	Aspect	6
2.4	Star Slots	9
2.4.1	Slot 3	9
2.4.2	Slot 4	10
2.4.3	Slot 5	11
2.4.4	Slot 6	12
2.4.5	Slot 7	13
2.5	FID Slots	14
2.5.1	Slot 0	14
2.5.2	Slot 1	15
2.5.3	Slot 2	16
3	Point Sources	17
A	Summary	18
A.1	Status	18
A.2	Comments	18

1 Front

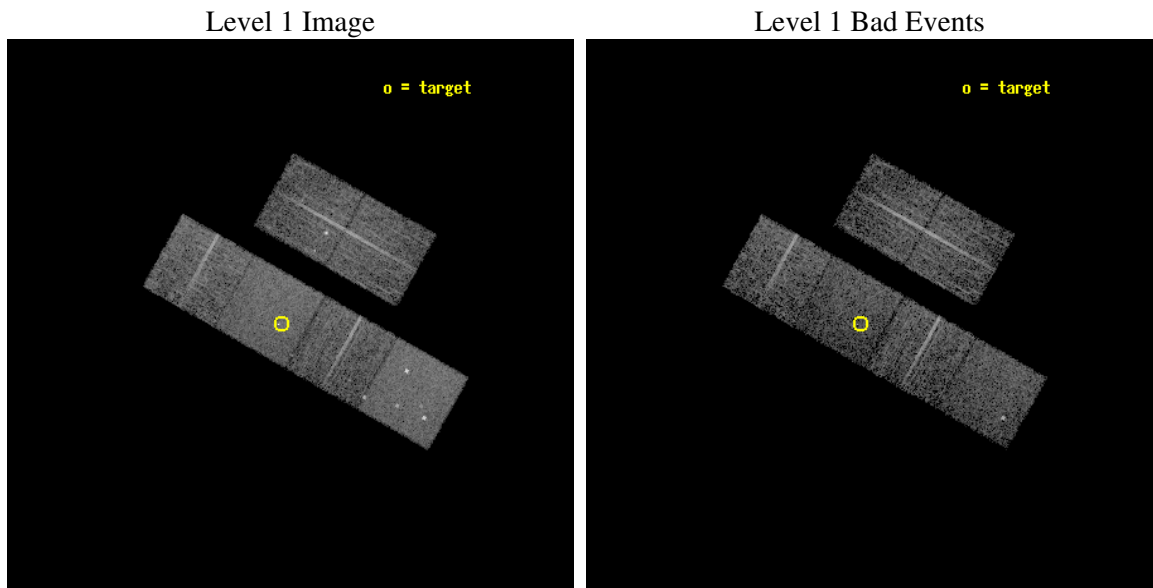
seq_num	600074
obs_id	314
title	M31 MONITORING (FOLLOWUP)
observer	Dr. Stephen Murray
object	M31 TRANSIENT TBD
dtcycle	0
cycle	P
ra_targ	10.67
dec_targ	40.865
ra_nom	10.648999364273
dec_nom	40.867571669421
roll_nom	209.4134740575
revision	2
ontime	5148.8000047952
livetime	5083.6027988993
ontime2	5145.5590345412
ontime3	5148.8000047952
ontime5	5148.8000047952
ontime6	5148.8000047952
ontime7	5148.8000047952
ontime8	5148.8000047952
l2events	51088



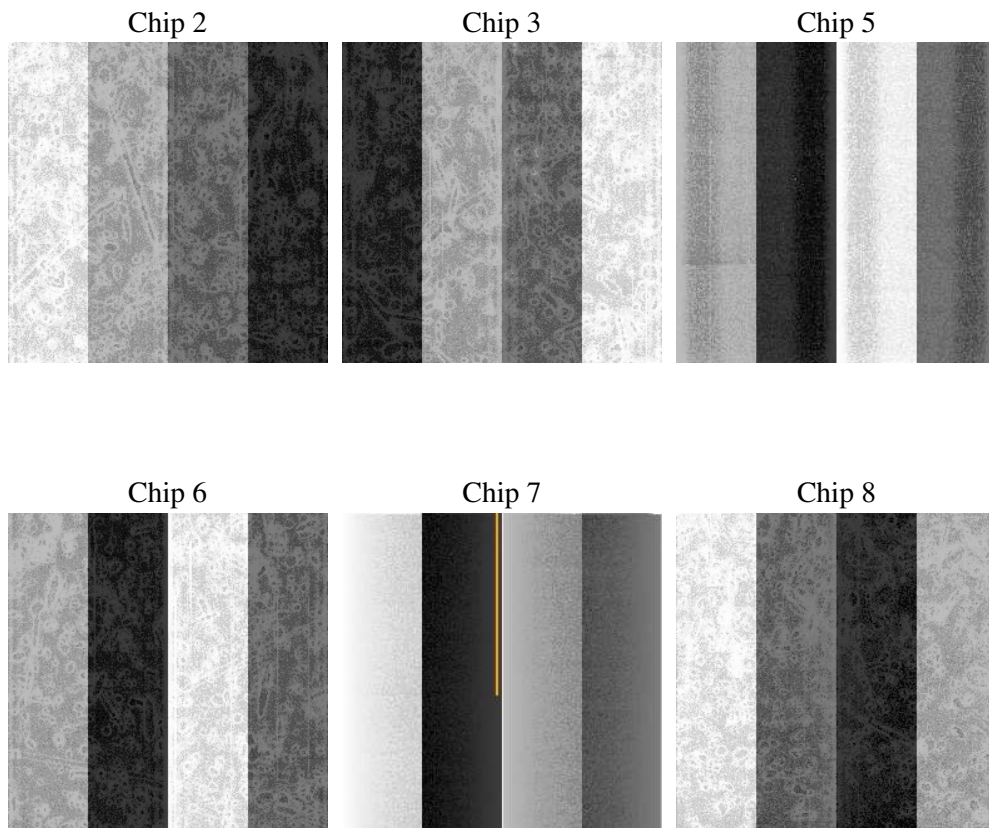
2 OBI

2.1 OBI

2.1.1 Images



2.1.2 Bias



2.1.3 Parameters

obi_num	0
ascdsver	7.6.10
caldbver	3.4.0
date	2007-06-12T13:28:23
revision	2

sched_exp_time	5000.000000
ontime	5148.8000047952
ontime2	5145.5590345412
ontime3	5148.8000047952
ontime5	5148.8000047952
ontime6	5148.8000047952
ontime7	5148.8000047952
ontime8	5148.8000047952
l1events	234784

2.1.4 Events

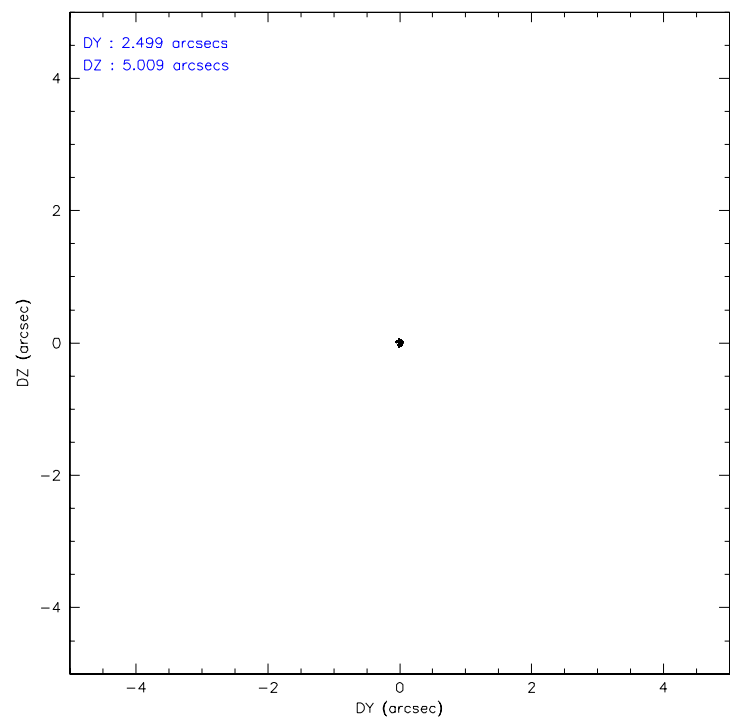
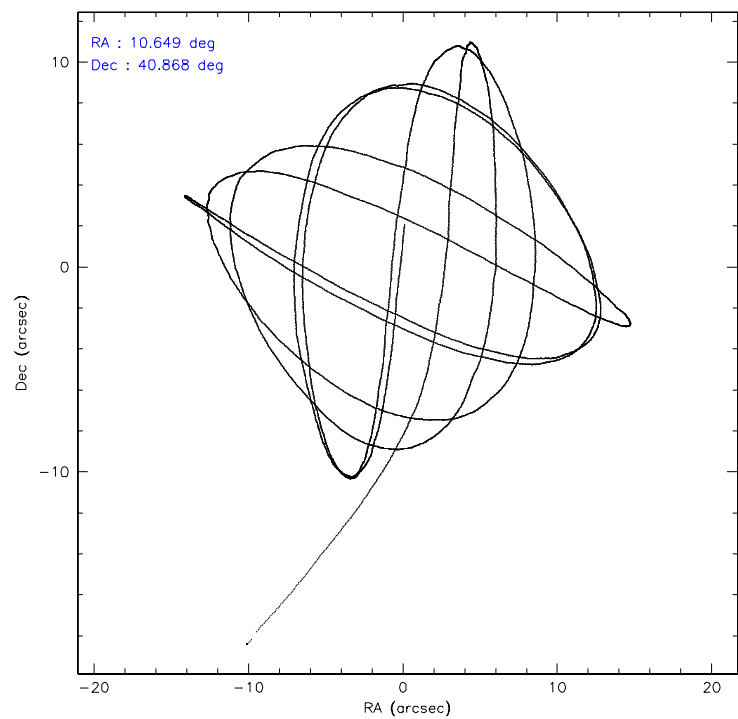
	ccd 2	ccd 3	ccd 5	ccd 6	ccd 7	ccd 8
level 1 events	35570	34647	47810	33168	42867	40722
rejected events	31813	29783	25841	29446	24715	32924
rejected %	89%	85%	54%	88%	57%	80%

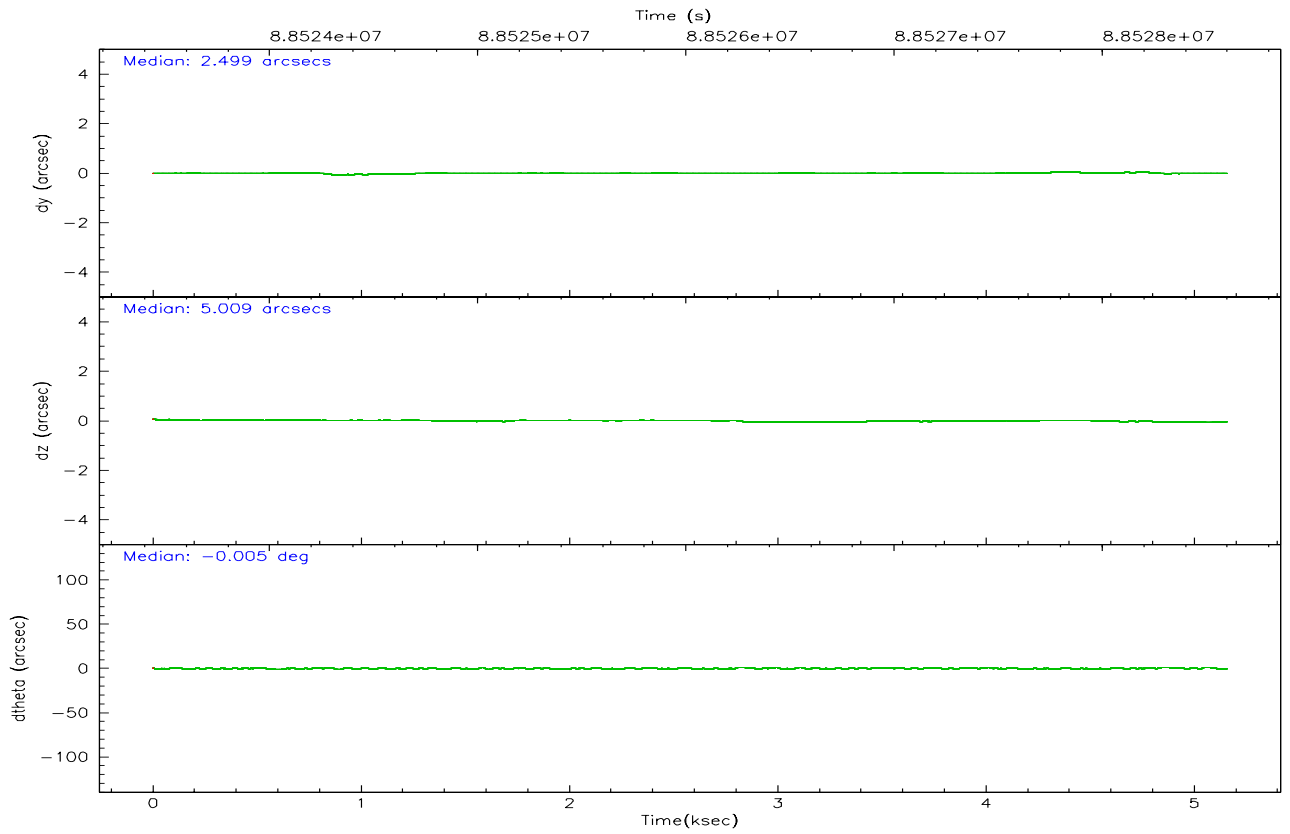
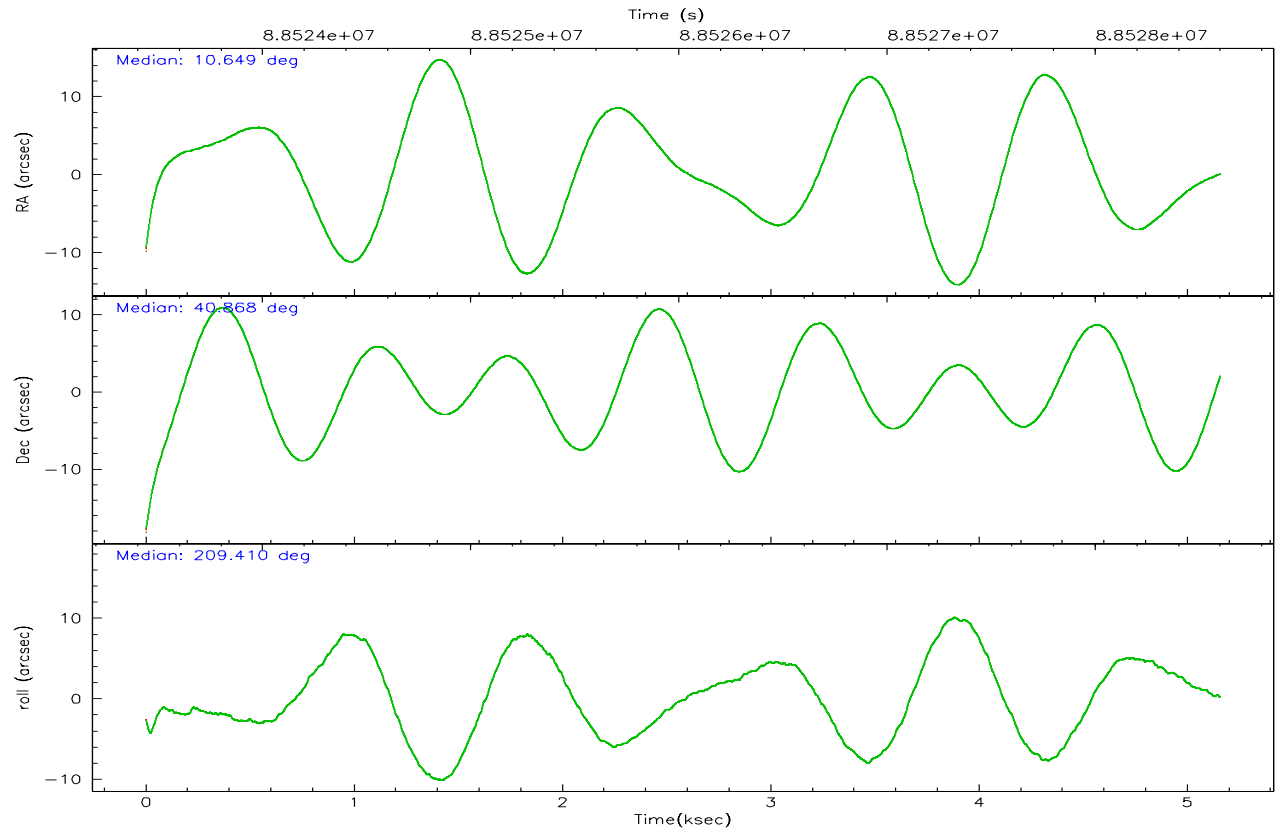
	ccd 2	ccd 3	ccd 5	ccd 6	ccd 7	ccd 8
grade 0 events	1711	2658	3704	1582	1975	2750
	4%	7%	7%	4%	4%	6%
grade 1 events	14	23	67	18	48	28
	0%	0%	0%	0%	0%	0%
grade 2 events	762	829	6293	774	3734	1649
	2%	2%	13%	2%	8%	4%
grade 3 events	393	410	926	384	1749	809
	1%	1%	1%	1%	4%	1%
grade 4 events	352	405	876	366	1678	795
	0%	1%	1%	1%	3%	1%
grade 5 events	1161	1269	3577	1343	3979	1671
	3%	3%	7%	4%	9%	4%
grade 6 events	624	667	10636	705	9371	1922
	1%	1%	22%	2%	21%	4%
grade 7 events	30553	28386	21731	27996	20333	31098
	85%	81%	45%	84%	47%	76%

2.2 Compared Parameters

Parameter	Planned	Actual	Parameter	Planned	Actual
Instrument	ACIS	ACIS	Obspar format version number	6	6
Detector	ACIS-235678	ACIS-235678	Obspar file type	PREDICTED	ACTUAL
Grating	NONE	NONE	Obspar update status	NONE	UPDATED
Data mode	FAINT	FAINT	Number of optional ACIS chips dropped	0	0
Observation mode	POINTING	POINTING	On-chip summing requested	N	N
Pointing RA	10.667189	10.64899936427258	Subarray requested	NONE	NONE
Pointing Dec	40.891319	40.86757166942057	Alternating exposures requested	N	N
Pointing Roll	209.244951	209.4134740574951	Primary exposure time	3.200000	3.2
SIM focus pos (mm)	-0.684267	-0.6828225247311905			
SIM defocus (mm)	0	0.001444936568705701			
SIM translation stage pos (mm)	-190.132523	-190.1425803651734			
SIM translation stage offset (mm)	0	0.01005778216563158			
Observation start time	88523598.184000	88522487.01617999			
Observation start date	2000-10-21T13:52:14	2000-10-21T13:34:47			
Observation end time	88528598.184000	88529143.878932			
Observation end date	2000-10-21T15:15:34	2000-10-21T15:25:43			
Read mode	TIMED	TIMED			

2.3 Aspect



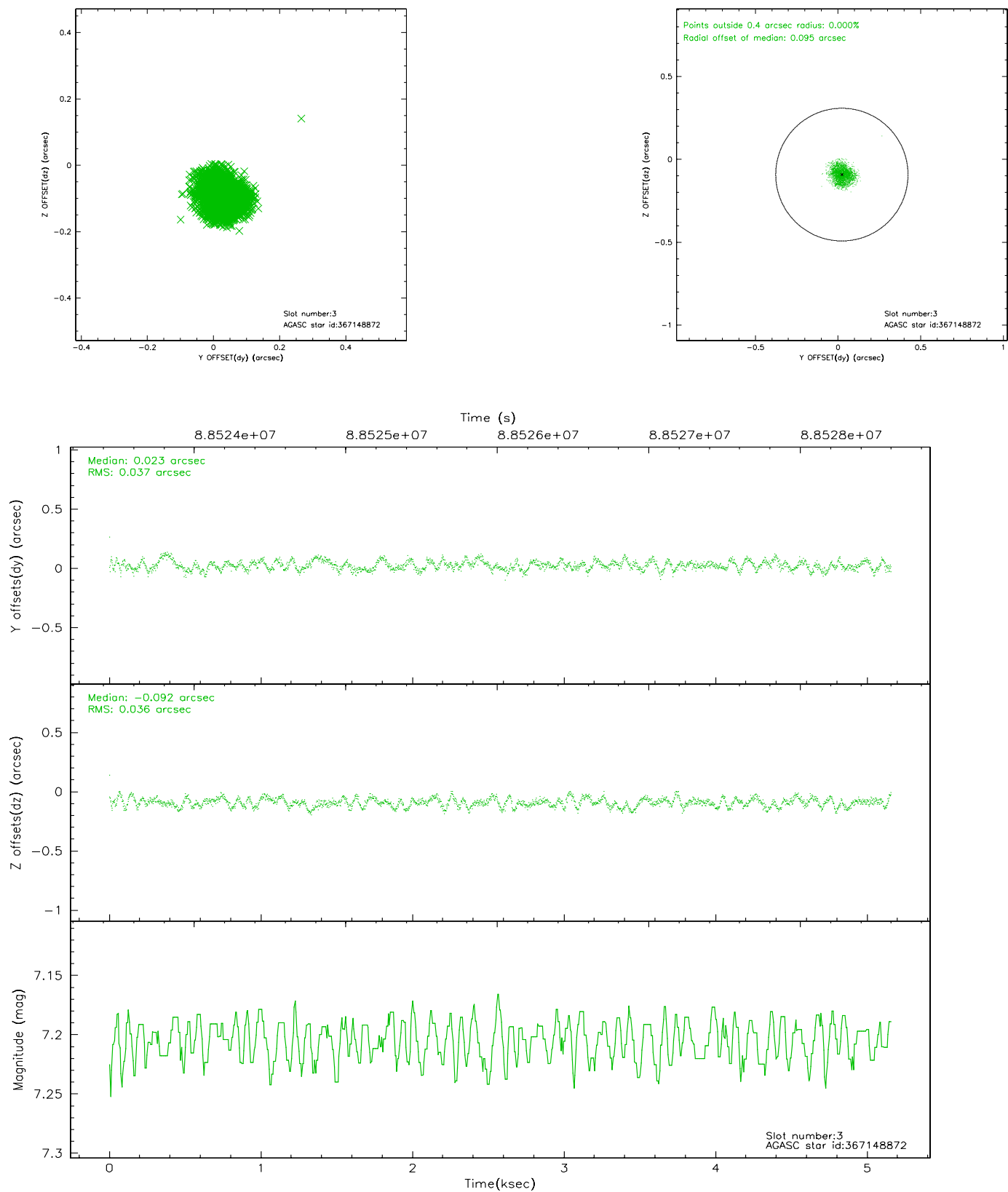


Slot Statistics

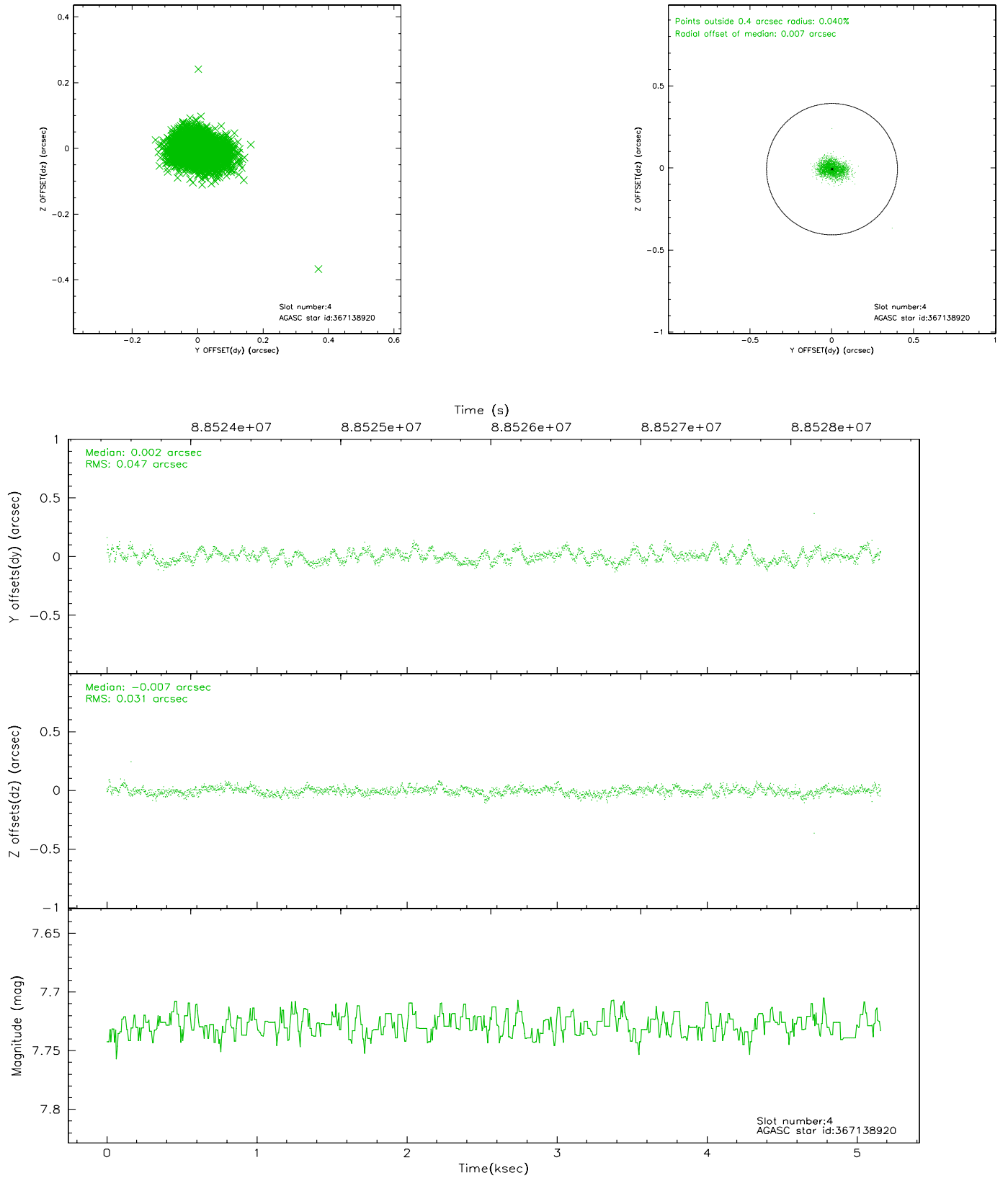
slot	status	id	mag	n_pts	med_dy	med_dz	dr1	dr2	ra	dec	mean_y	mean_z
0	FID	ACIS-S-2	7.11	1259	-0.028	0.013	0.006	0.011	0.000000	0.000000	-755.12	-1726.07
1	FID	ACIS-S-4	7.21	1259	-0.037	0.010	0.006	0.012	0.000000	0.000000	2157.58	181.25
2	FID	ACIS-S-5	7.24	1259	0.034	-0.014	0.006	0.011	0.000000	0.000000	-1806.42	176.17
3	GUIDE	367148872	7.20	2517	0.023	-0.092	0.058	0.085	10.505940	40.688258	741.50	422.38
4	GUIDE	367138920	7.73	2517	0.002	-0.007	0.060	0.094	11.513485	40.808909	-1871.94	1375.81
5	GUIDE	367139768	7.98	2517	-0.030	0.035	0.050	0.082	11.069715	40.685175	-597.84	1182.67
6	GUIDE	367144424	8.66	2516	-0.055	-0.001	0.059	0.098	10.464515	40.309136	1509.19	1556.86
7	GUIDE	367674552	8.84	2516	0.060	0.064	0.070	0.111	11.016238	41.570845	-2015.16	-1676.38

2.4 Star Slots

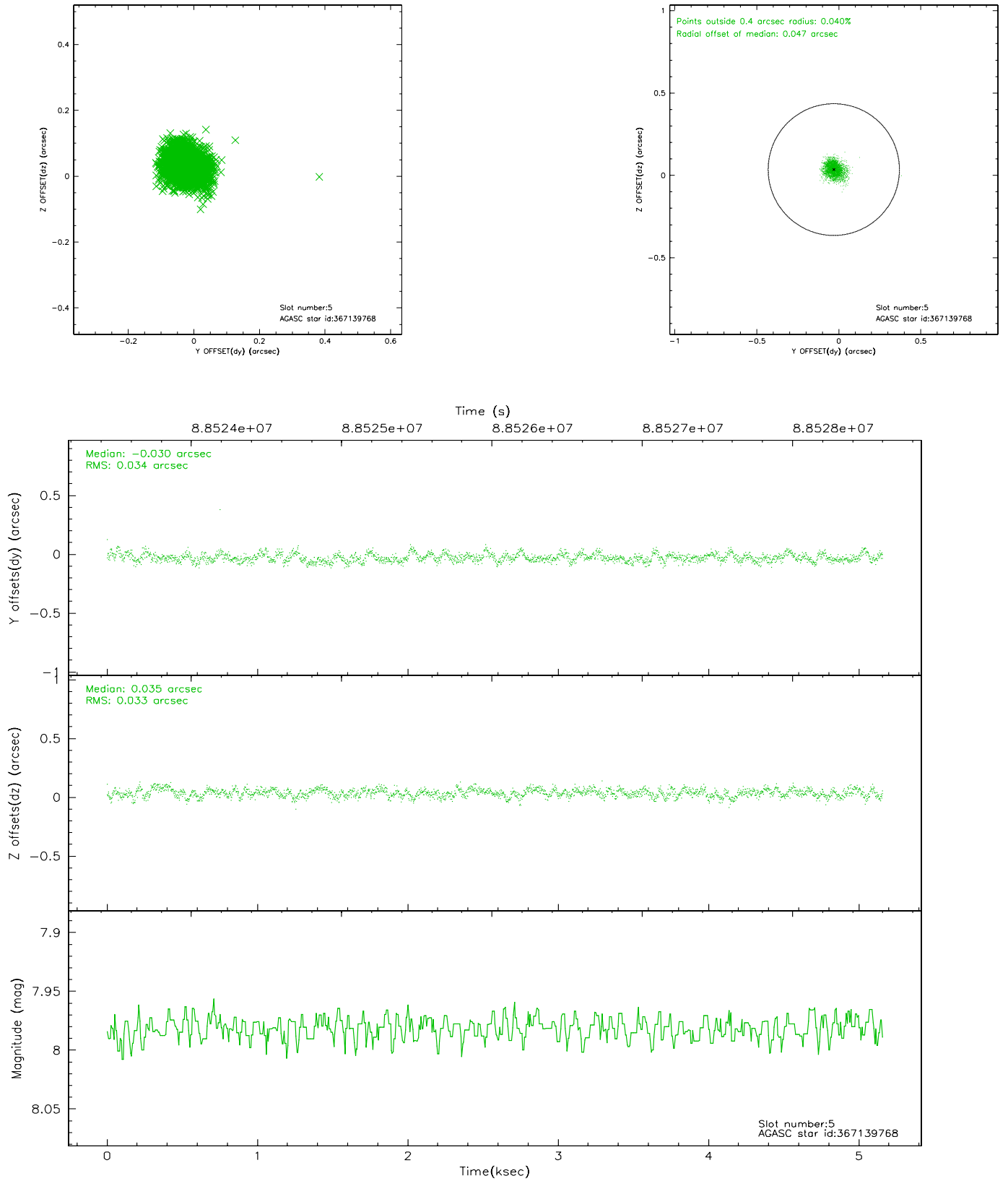
2.4.1 Slot 3



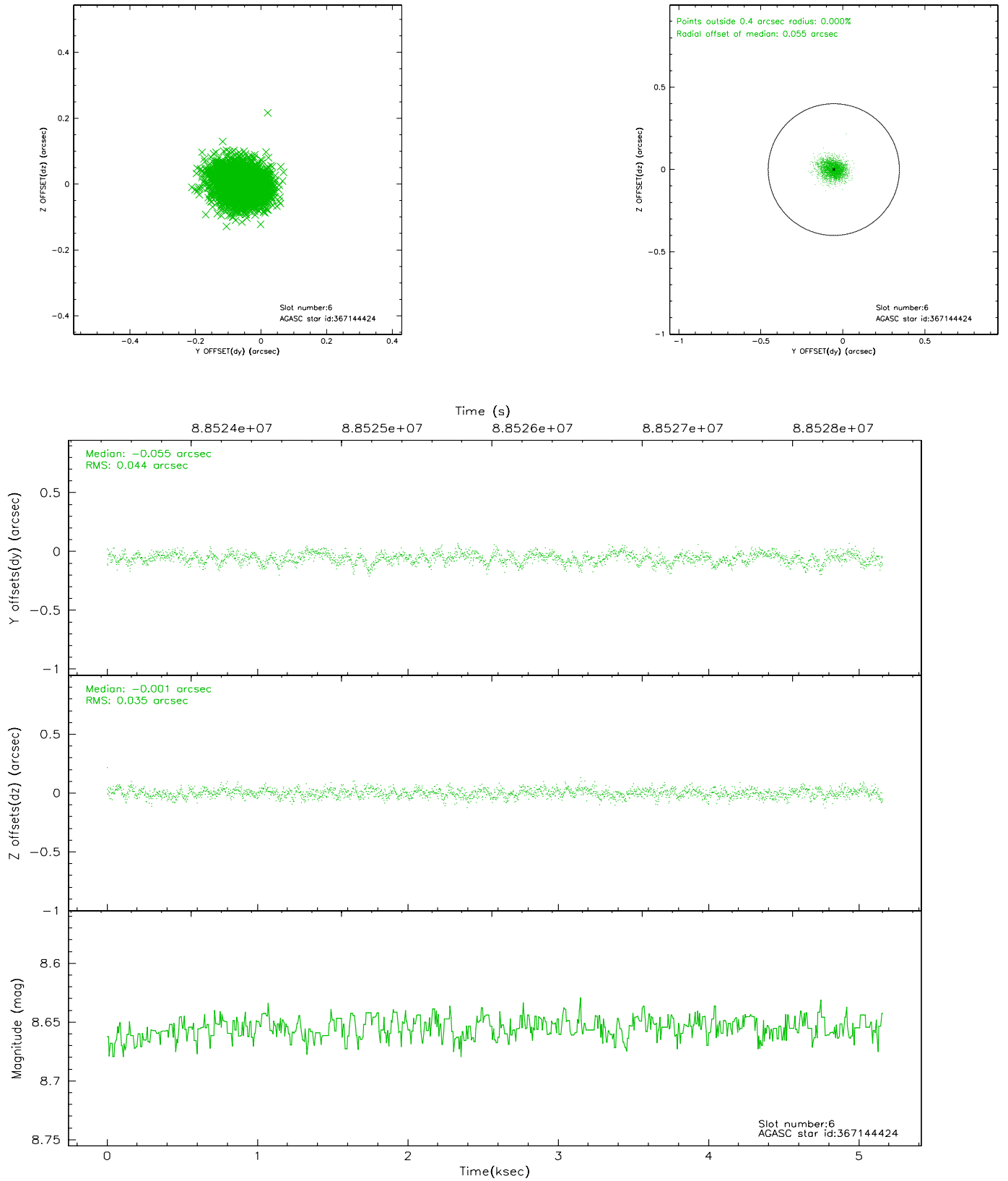
2.4.2 Slot 4



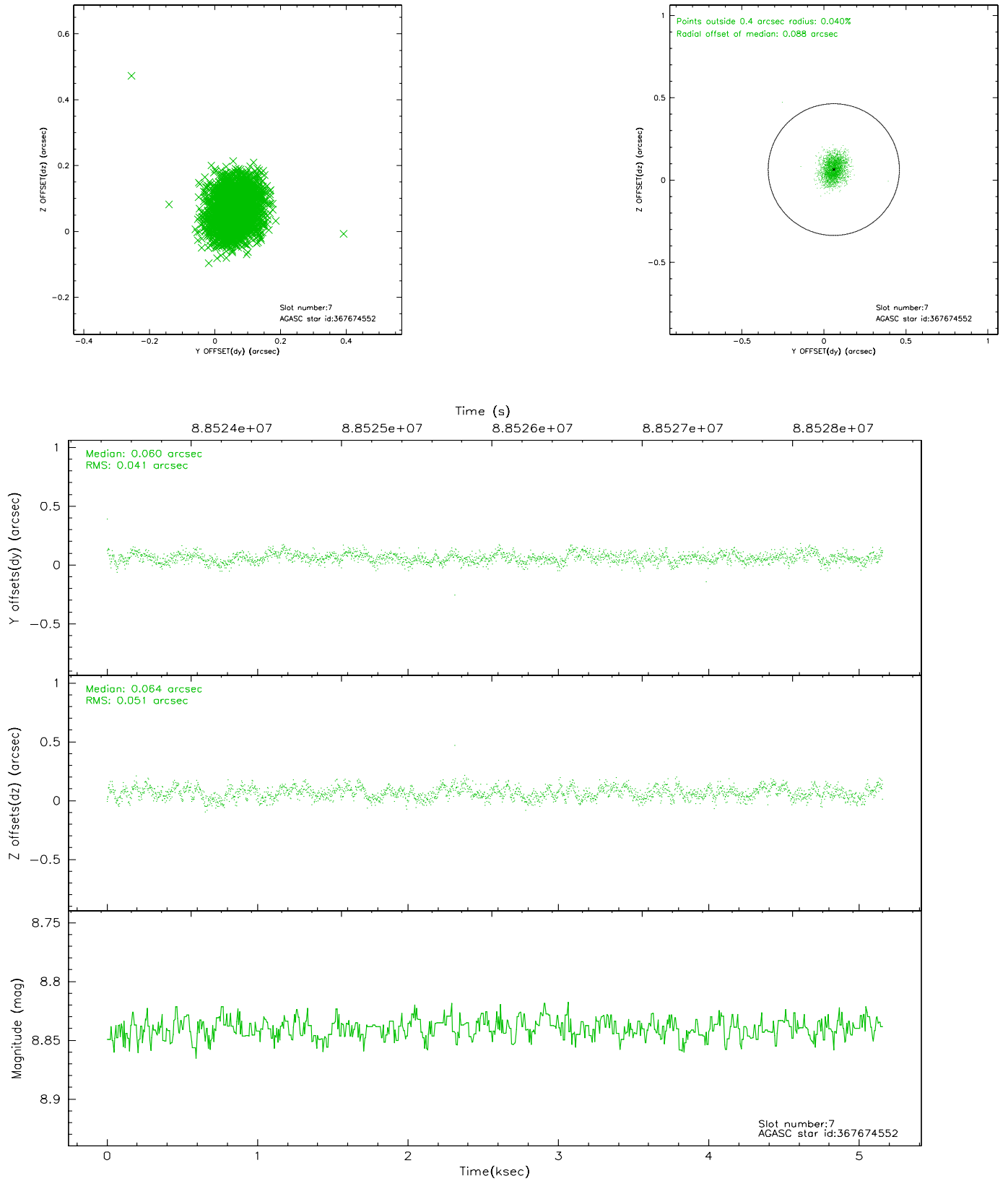
2.4.3 Slot 5



2.4.4 Slot 6

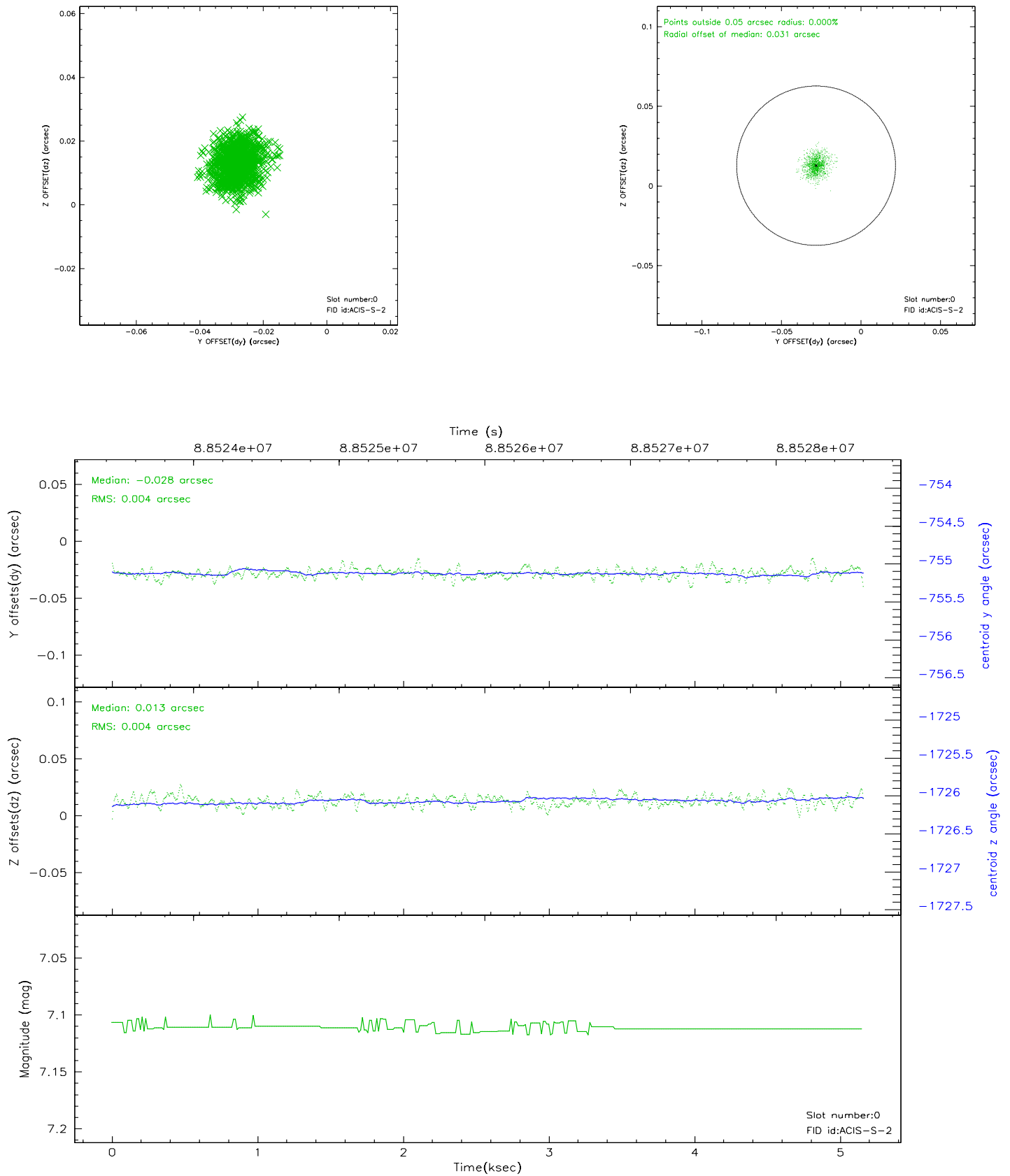


2.4.5 Slot 7

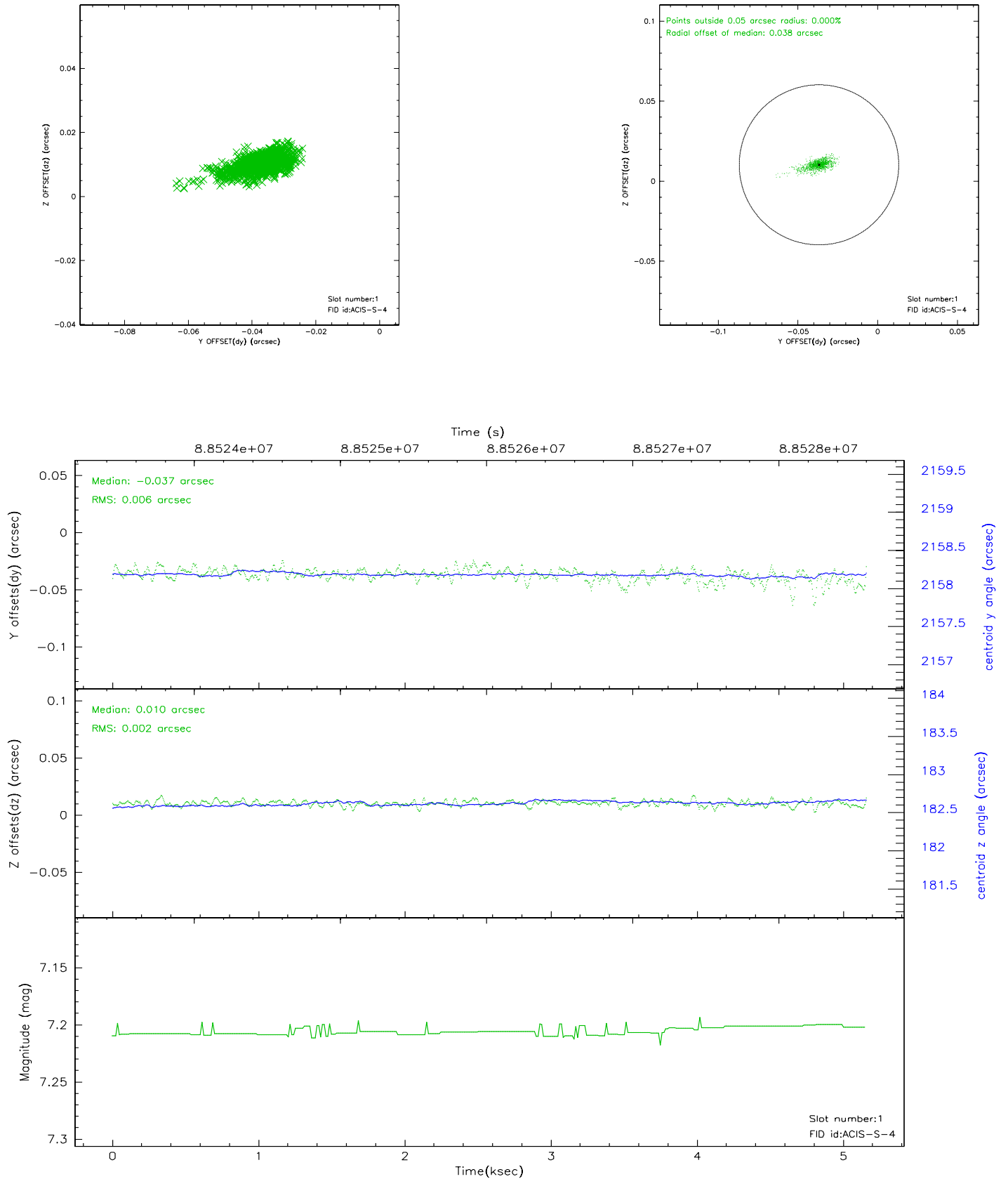


2.5 FID Slots

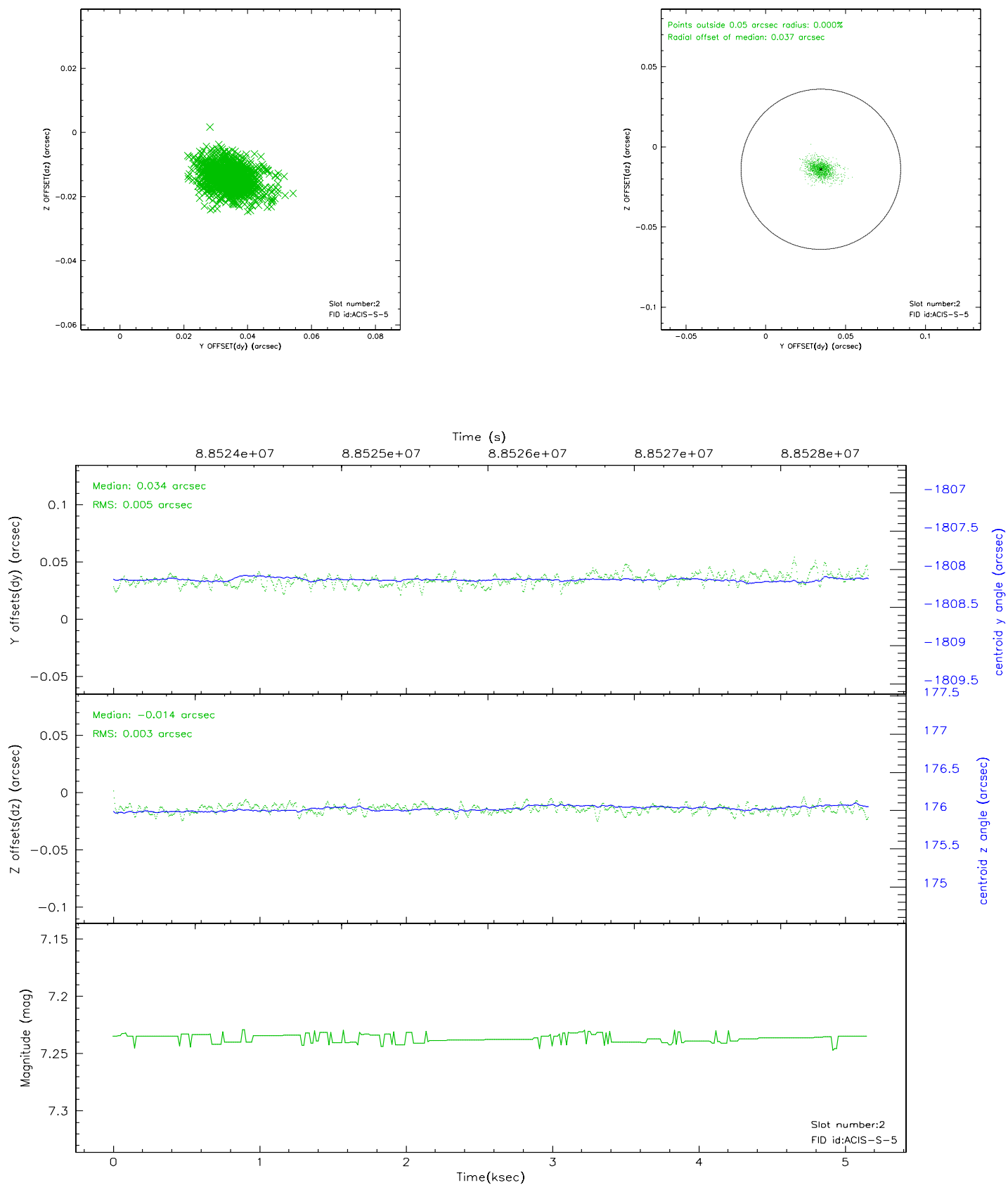
2.5.1 Slot 0



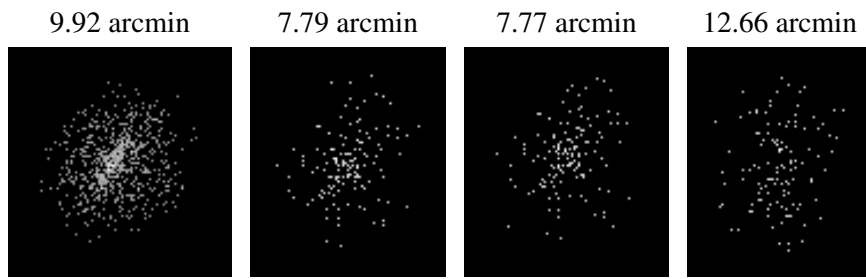
2.5.2 Slot 1



2.5.3 Slot 2



3 Point Sources



A Summary

A.1 Status

V&V Scientist	Jen Lauer
V&V Date (YYYY-MM-DD)	2007.06.12
V&V Edition	1
V&V Disposition and Status	OK
V&V Charge Time	5.148

A.2 Comments

Window constraint met.