

V&V Reference Report

L2 ASCDS Version : 7.6.10

Observation 313 - L2 Version 001
Chandra X-Ray Center

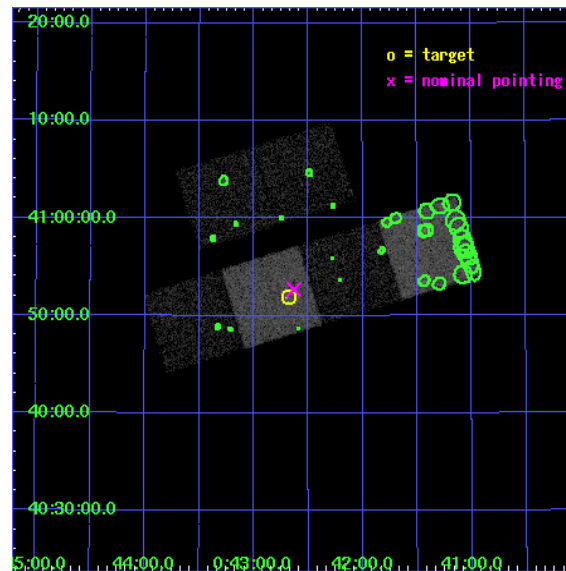
L2 Processing Date : Jun 8 2007

Contents

1	Front	2
2	OBI	3
2.1	OBI	3
2.1.1	Images	3
2.1.2	Bias	3
2.1.3	Parameters	4
2.1.4	Events	4
2.2	Compared Parameters	5
2.3	Aspect	6
2.4	Star Slots	9
2.4.1	Slot 3	9
2.4.2	Slot 4	10
2.4.3	Slot 5	11
2.4.4	Slot 6	12
2.4.5	Slot 7	13
2.5	FID Slots	14
2.5.1	Slot 0	14
2.5.2	Slot 1	15
2.5.3	Slot 2	16
3	Point Sources	17
A	Summary	18
A.1	Status	18
A.2	Comments	18

1 Front

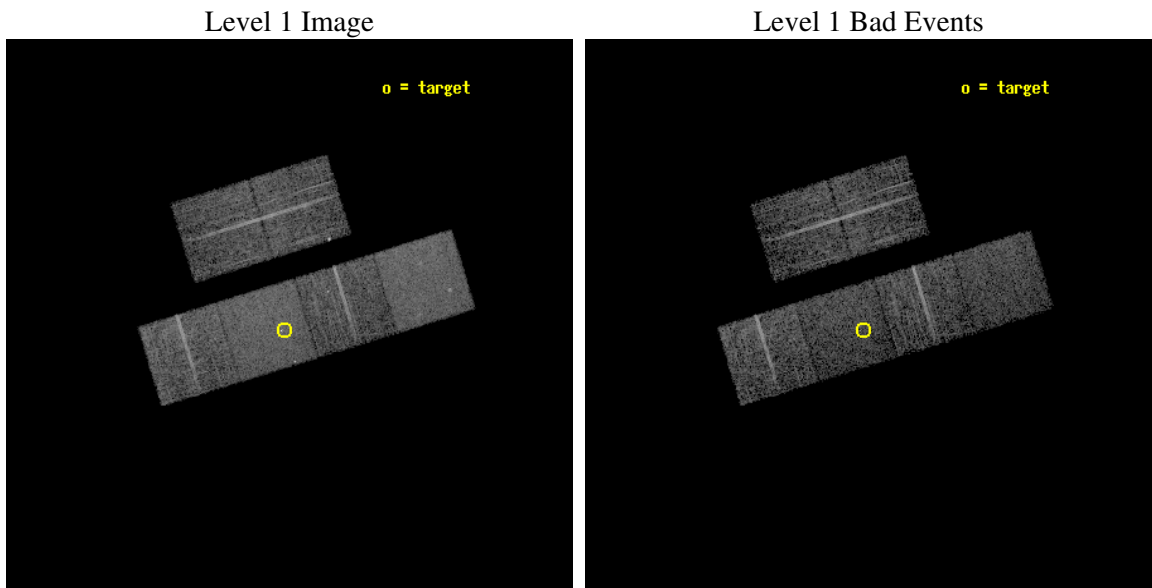
seq_num	600073
obs_id	313
title	M31 MONITORING (FOLLOWUP)
observer	Dr. Stephen Murray
object	M31 TRANSIENT TBD
dtcycle	0
cycle	P
ra_targ	10.67
dec_targ	40.865
ra_nom	10.658158158092
dec_nom	40.878372591098
roll_nom	162.8876000741
revision	2
ontime	6054.4000056386
livetime	5977.7355472452
ontime2	6054.4000056386
ontime3	6054.4000056386
ontime5	6054.4000056386
ontime6	6054.4000056386
ontime7	6054.4000056386
ontime8	6054.4000056386
l2events	58225



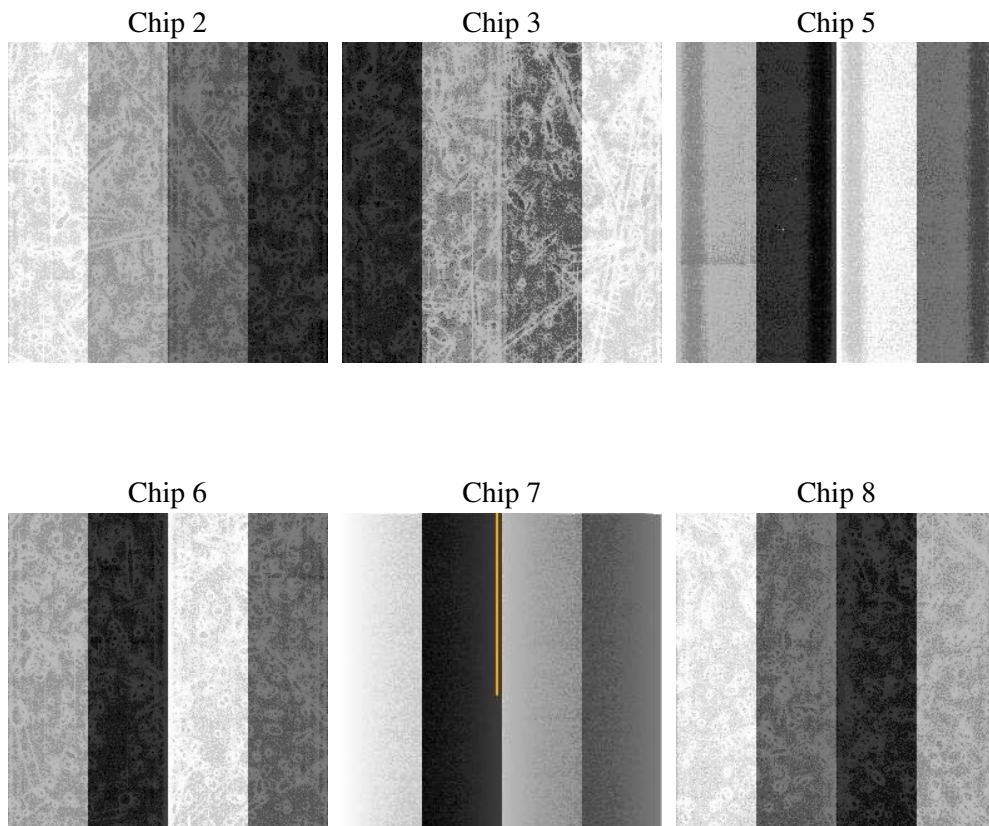
2 OBI

2.1 OBI

2.1.1 Images



2.1.2 Bias



2.1.3 Parameters

obi_num	0
ascdsver	7.6.10
caldbver	3.4.0
date	2007-06-08T09:28:06
revision	2

sched_exp_time	6100.000000
ontime	6054.4000056386
ontime2	6054.4000056386
ontime3	6054.4000056386
ontime5	6054.4000056386
ontime6	6054.4000056386
ontime7	6054.4000056386
ontime8	6054.4000056386
l1events	245289

2.1.4 Events

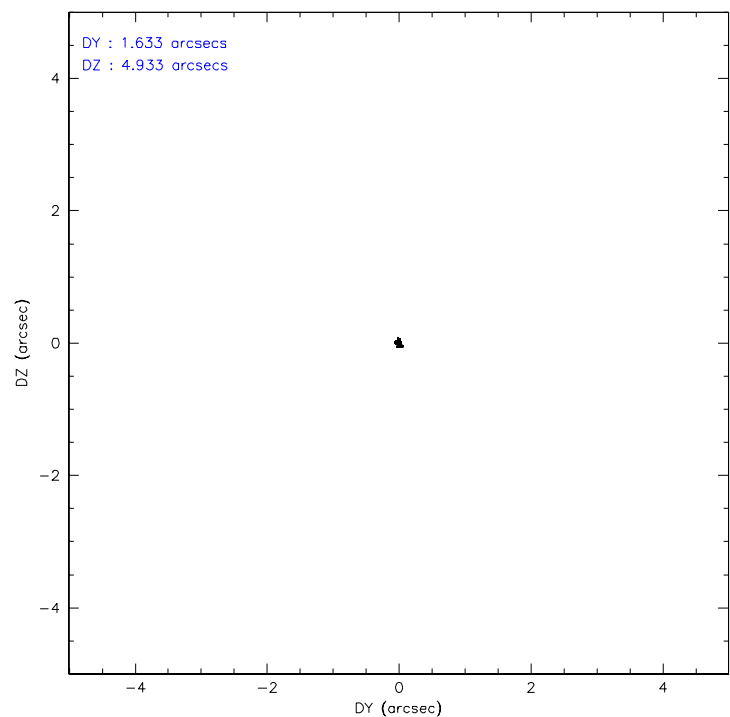
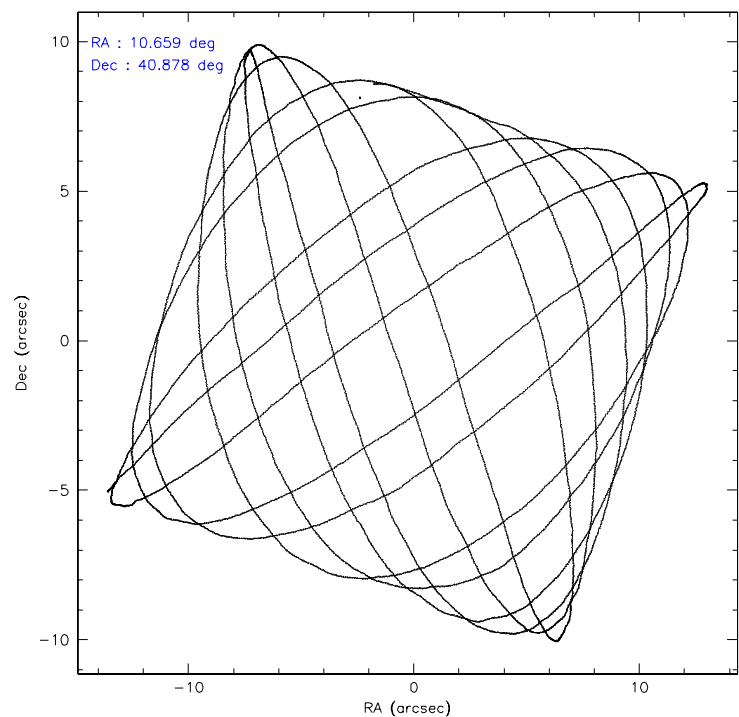
	ccd 2	ccd 3	ccd 5	ccd 6	ccd 7	ccd 8
level 1 events	37627	33821	47853	36010	47220	42758
rejected events	32922	29911	25363	31781	25335	34881
rejected %	87%	88%	53%	88%	53%	81%

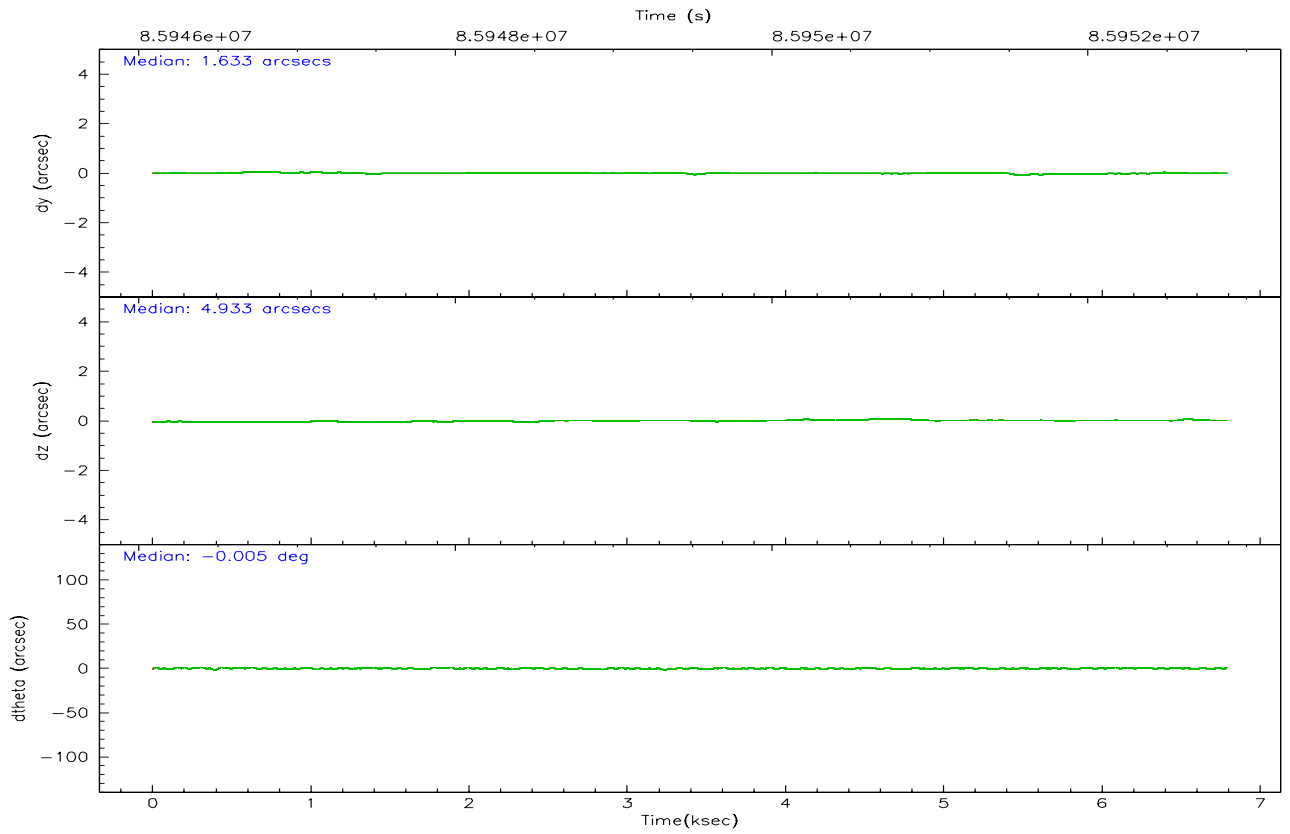
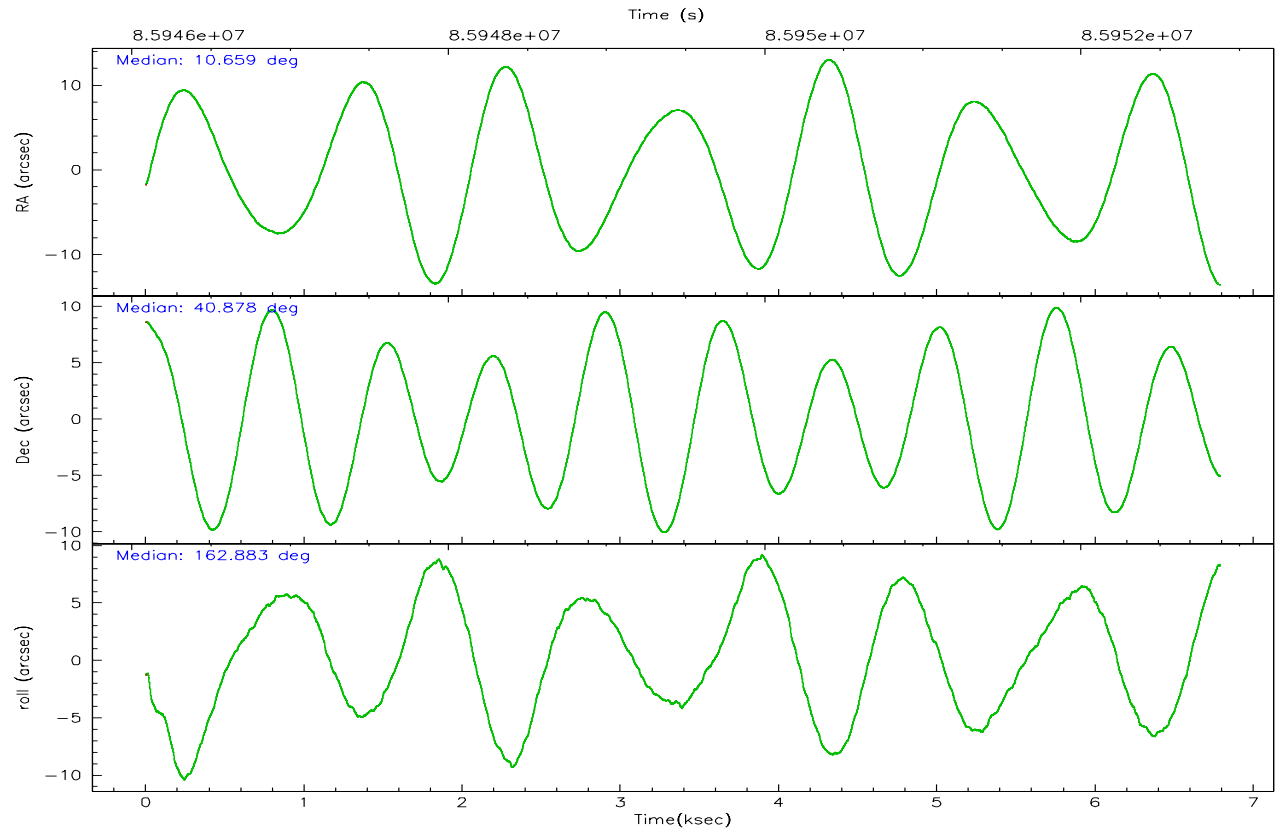
	ccd 2	ccd 3	ccd 5	ccd 6	ccd 7	ccd 8
grade 0 events	2240	1720	2188	1815	2602	2582
	5%	5%	4%	5%	5%	6%
grade 1 events	11	14	54	10	59	25
	0%	0%	0%	0%	0%	0%
grade 2 events	962	772	6536	867	4402	1618
	2%	2%	13%	2%	9%	3%
grade 3 events	388	372	1014	357	2085	941
	1%	1%	2%	0%	4%	2%
grade 4 events	366	355	1033	400	2026	882
	0%	1%	2%	1%	4%	2%
grade 5 events	1161	1200	3585	1333	4198	1664
	3%	3%	7%	3%	8%	3%
grade 6 events	756	692	11729	793	10778	1857
	2%	2%	24%	2%	22%	4%
grade 7 events	31743	28696	21714	30435	21070	33189
	84%	84%	45%	84%	44%	77%

2.2 Compared Parameters

Parameter	Planned	Actual	Parameter	Planned	Actual
Instrument	ACIS	ACIS	Obspar format version number	6	6
Detector	ACIS-235678	ACIS-235678	Obspar file type	PREDICTED	ACTUAL
Grating	NONE	NONE	Obspar update status	NONE	UPDATED
Data mode	FAINT	FAINT	Number of optional ACIS chips dropped	0	0
Observation mode	POINTING	POINTING	On-chip summing requested	N	N
Pointing RA	10.693313	10.65815815809208	Subarray requested	NONE	NONE
Pointing Dec	40.884651	40.87837259109774	Alternating exposures requested	N	N
Pointing Roll	162.707959	162.8876000740979	Primary exposure time	3.200000	3.2
SIM focus pos (mm)	-0.684267	-0.6828225247311905			
SIM defocus (mm)	0	0.001444936568705701			
SIM translation stage pos (mm)	-190.132523	-190.1400660498719			
SIM translation stage offset (mm)	0	0.00754346686406393			
Observation start time	85946779.184000	85945574.39393499			
Observation start date	2000-09-21T18:05:15	2000-09-21T17:46:14			
Observation end time	85952879.184000	85953522.244234			
Observation end date	2000-09-21T19:46:55	2000-09-21T19:58:42			
Read mode	TIMED	TIMED			

2.3 Aspect



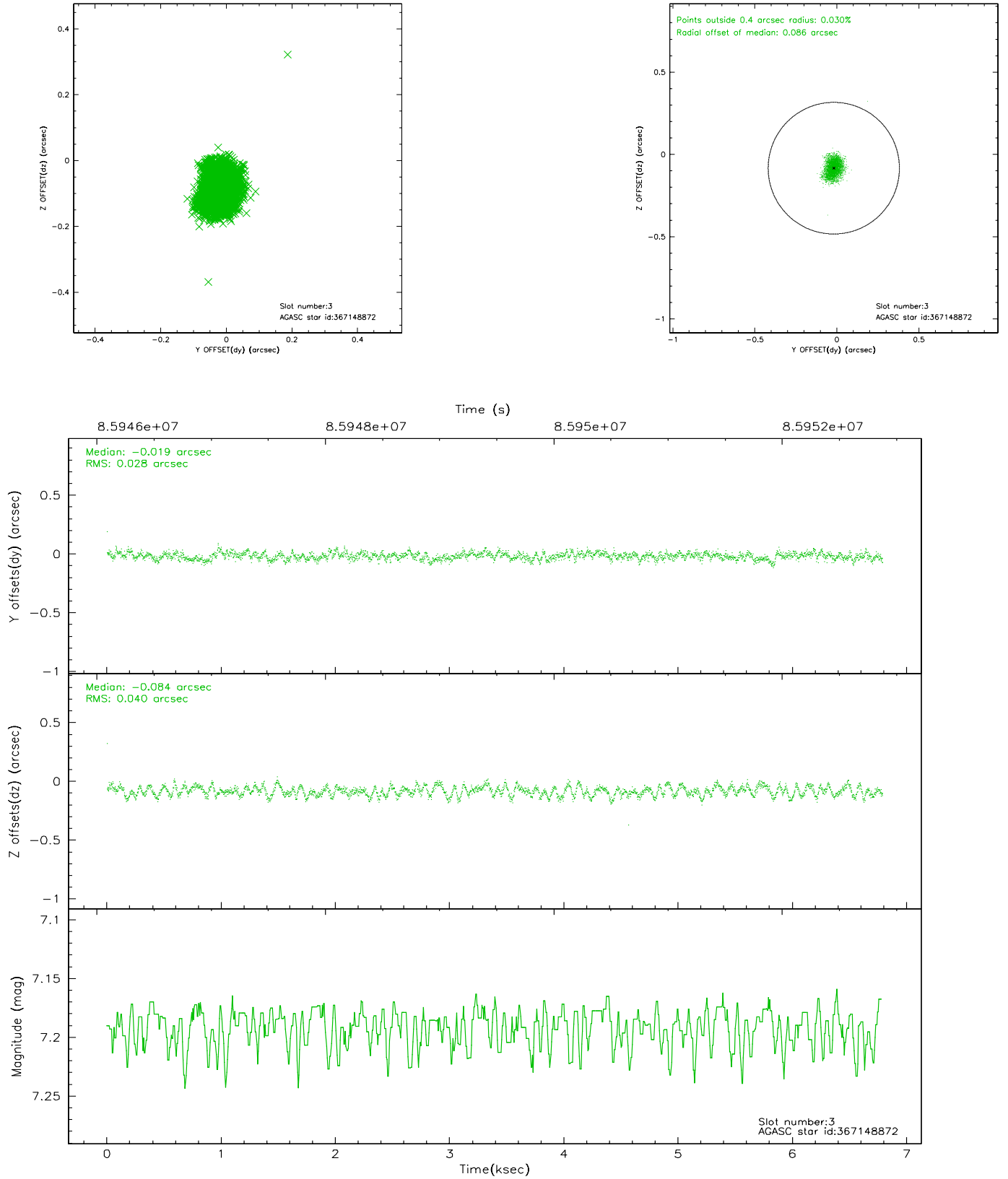


Slot Statistics

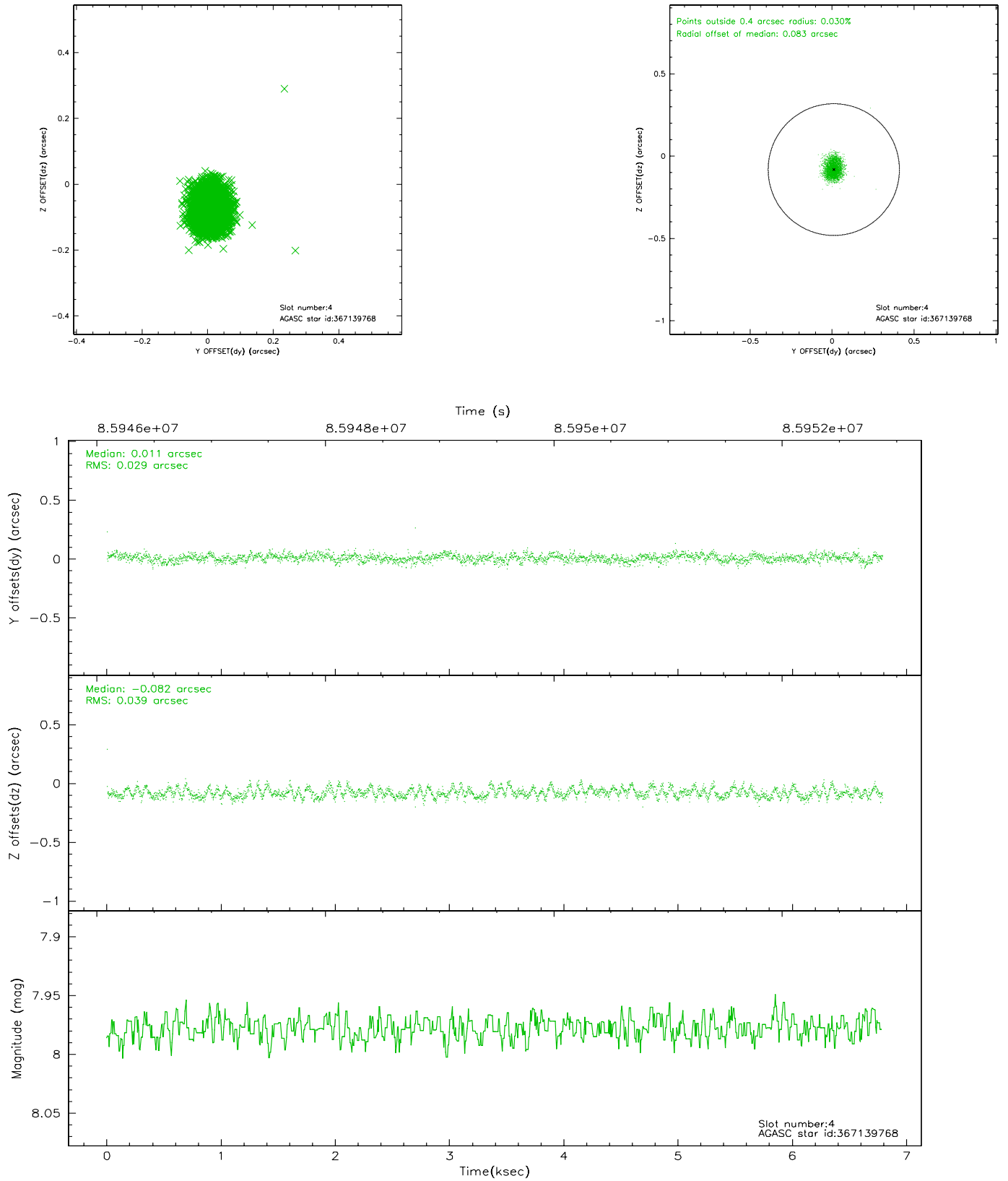
slot	status	id	mag	n_pts	med_dy	med_dz	dr1	dr2	ra	dec	mean_y	mean_z
0	FID	ACIS-S-4	7.21	1657	-0.052	-0.002	0.005	0.009	0.000000	0.000000	2159.06	182.65
1	FID	ACIS-S-5	7.24	1656	0.043	0.005	0.006	0.010	0.000000	0.000000	-1805.93	176.17
2	FID	ACIS-S-6	7.36	1656	-0.020	0.011	0.007	0.012	0.000000	0.000000	406.42	819.94
3	GUIDE	367148872	7.19	3312	-0.019	-0.084	0.053	0.083	10.505940	40.688258	280.24	826.48
4	GUIDE	367139768	7.98	3313	0.011	-0.082	0.051	0.081	11.069715	40.685175	-1191.88	378.16
5	GUIDE	365439720	8.48	3313	-0.024	-0.074	0.052	0.085	9.704623	40.431022	2107.42	2350.18
6	GUIDE	367146616	8.85	3308	0.118	0.132	0.065	0.102	11.418645	41.190163	-1544.04	-1641.36
7	GUIDE	367658664	9.60	3309	-0.085	0.106	0.078	0.128	10.374070	41.369746	1344.58	-1412.93

2.4 Star Slots

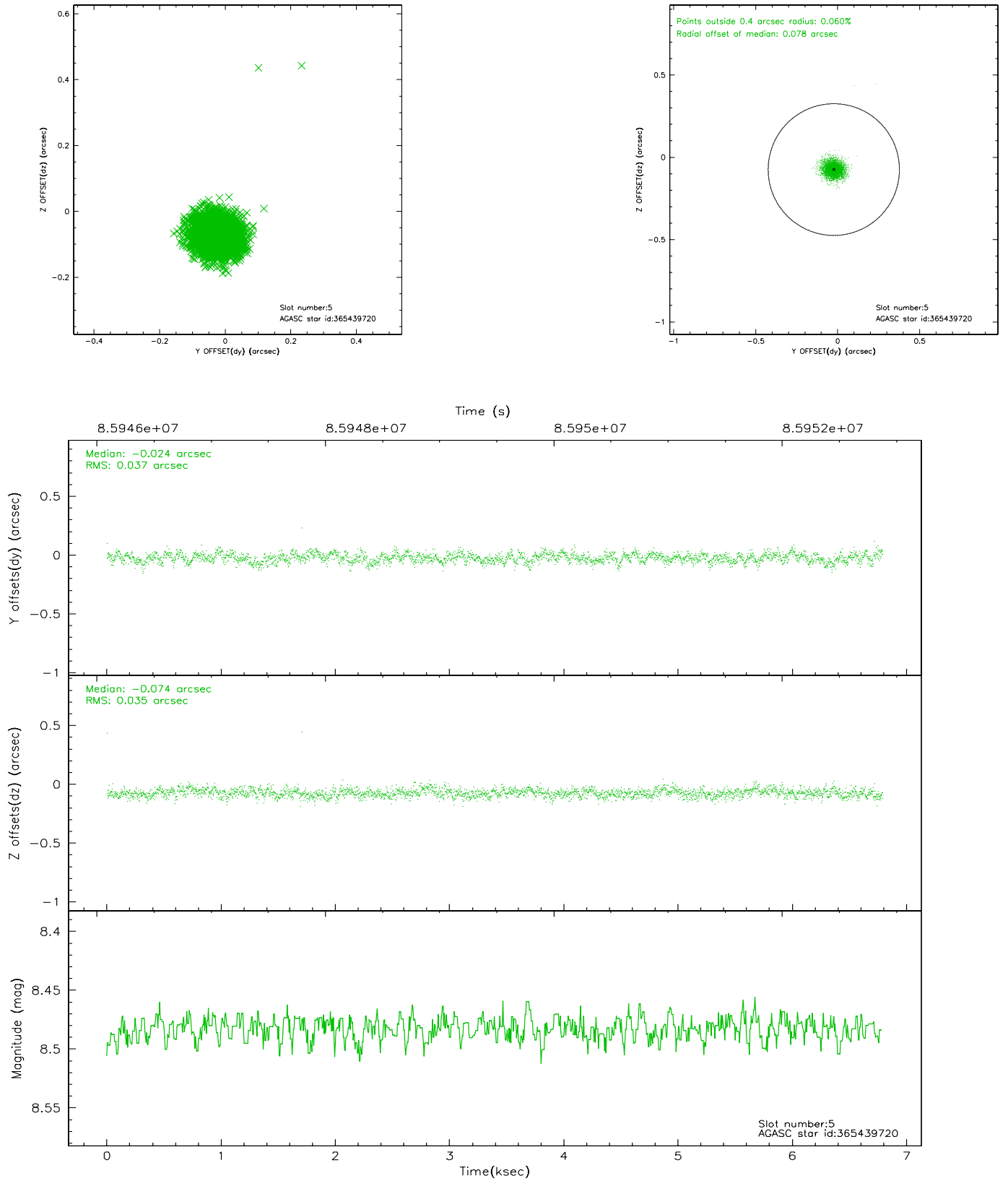
2.4.1 Slot 3



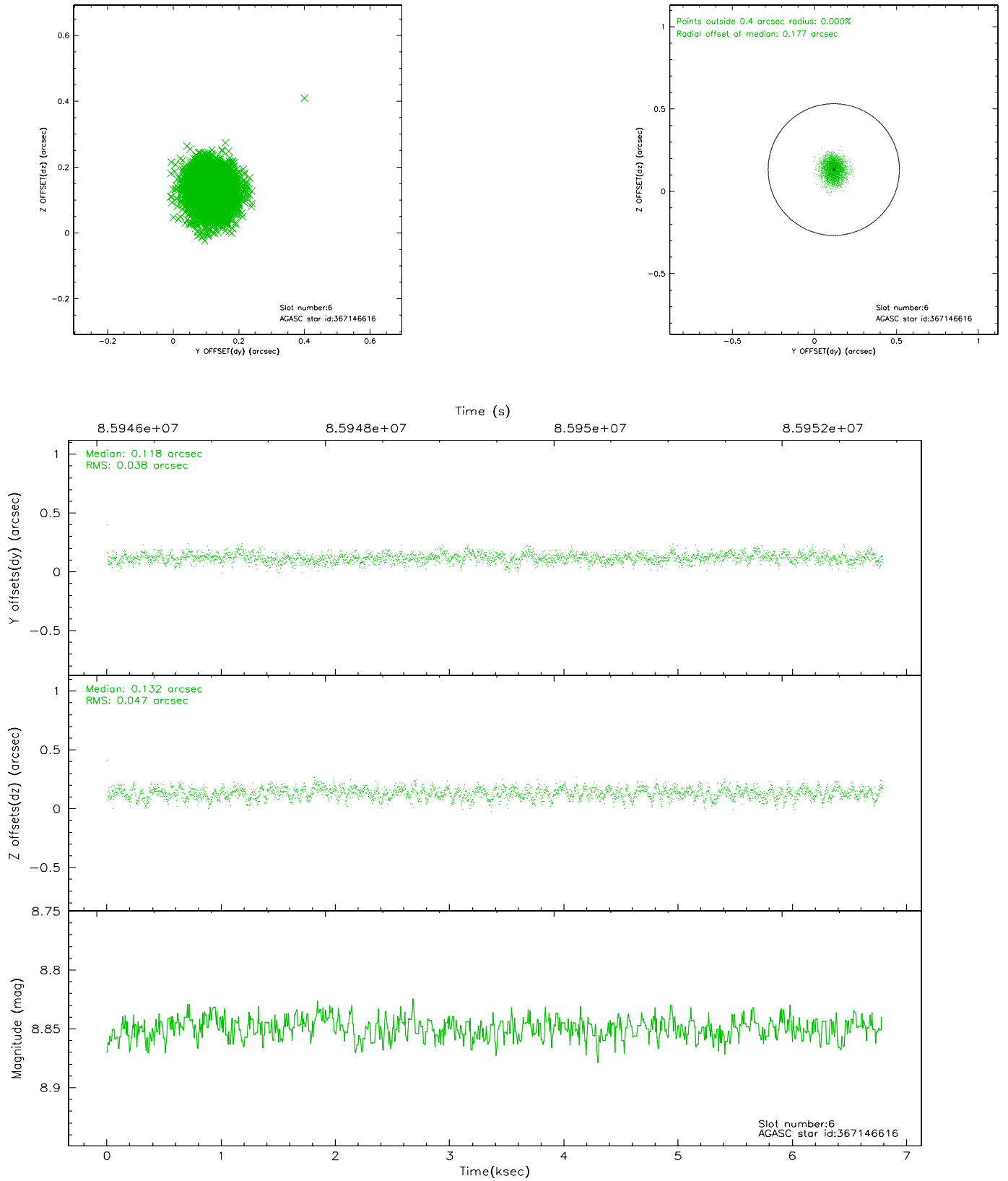
2.4.2 Slot 4



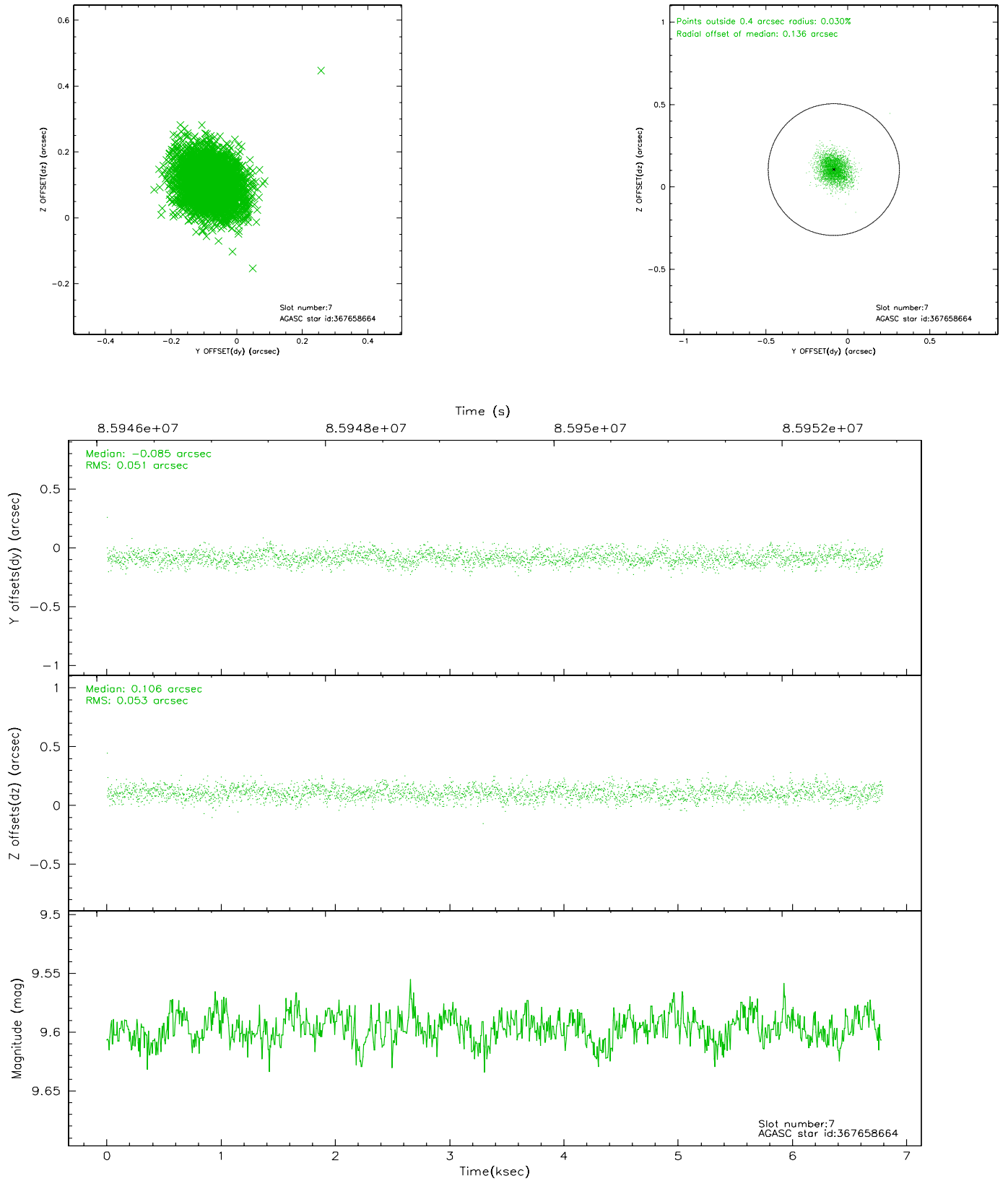
2.4.3 Slot 5



2.4.4 Slot 6

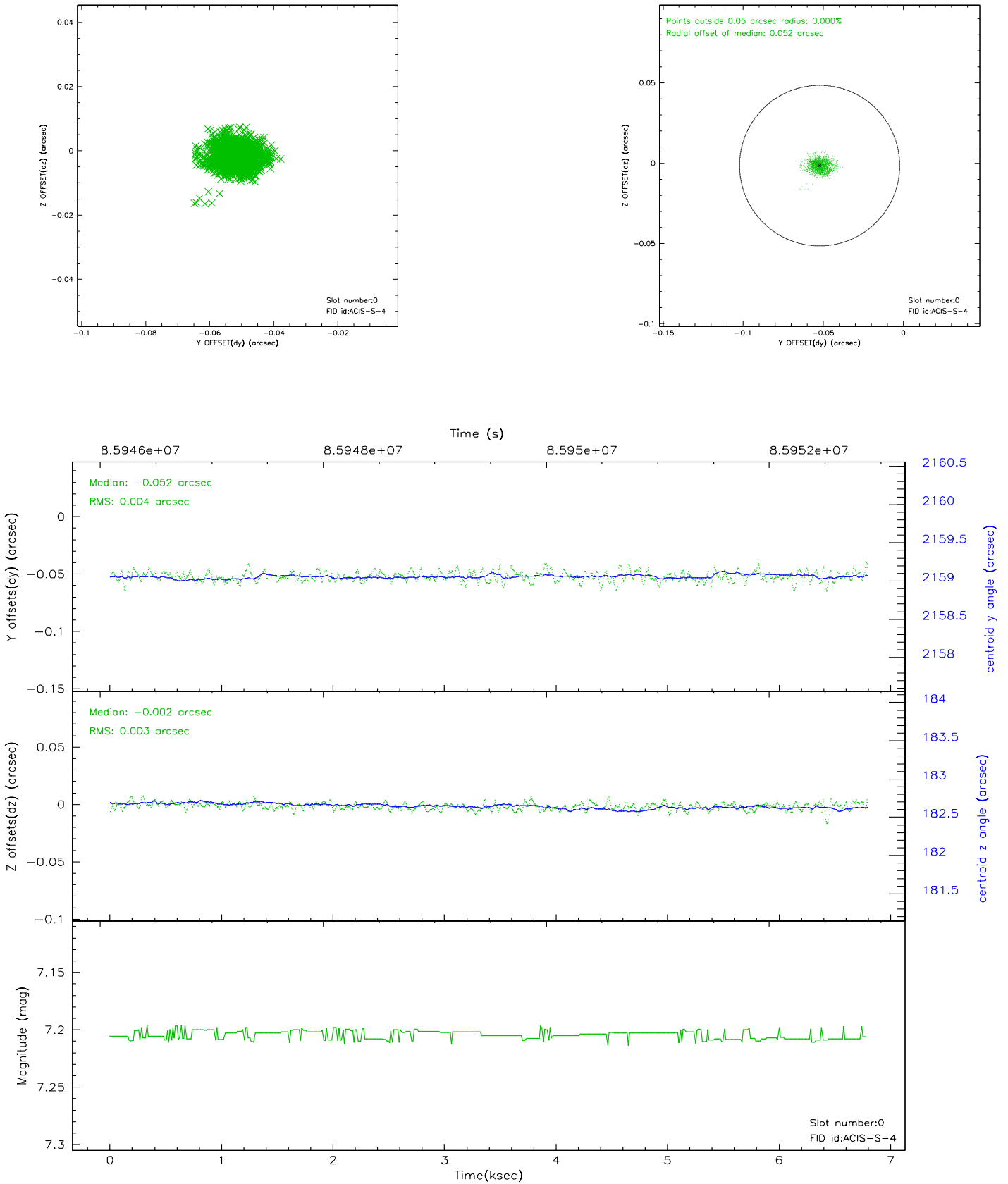


2.4.5 Slot 7

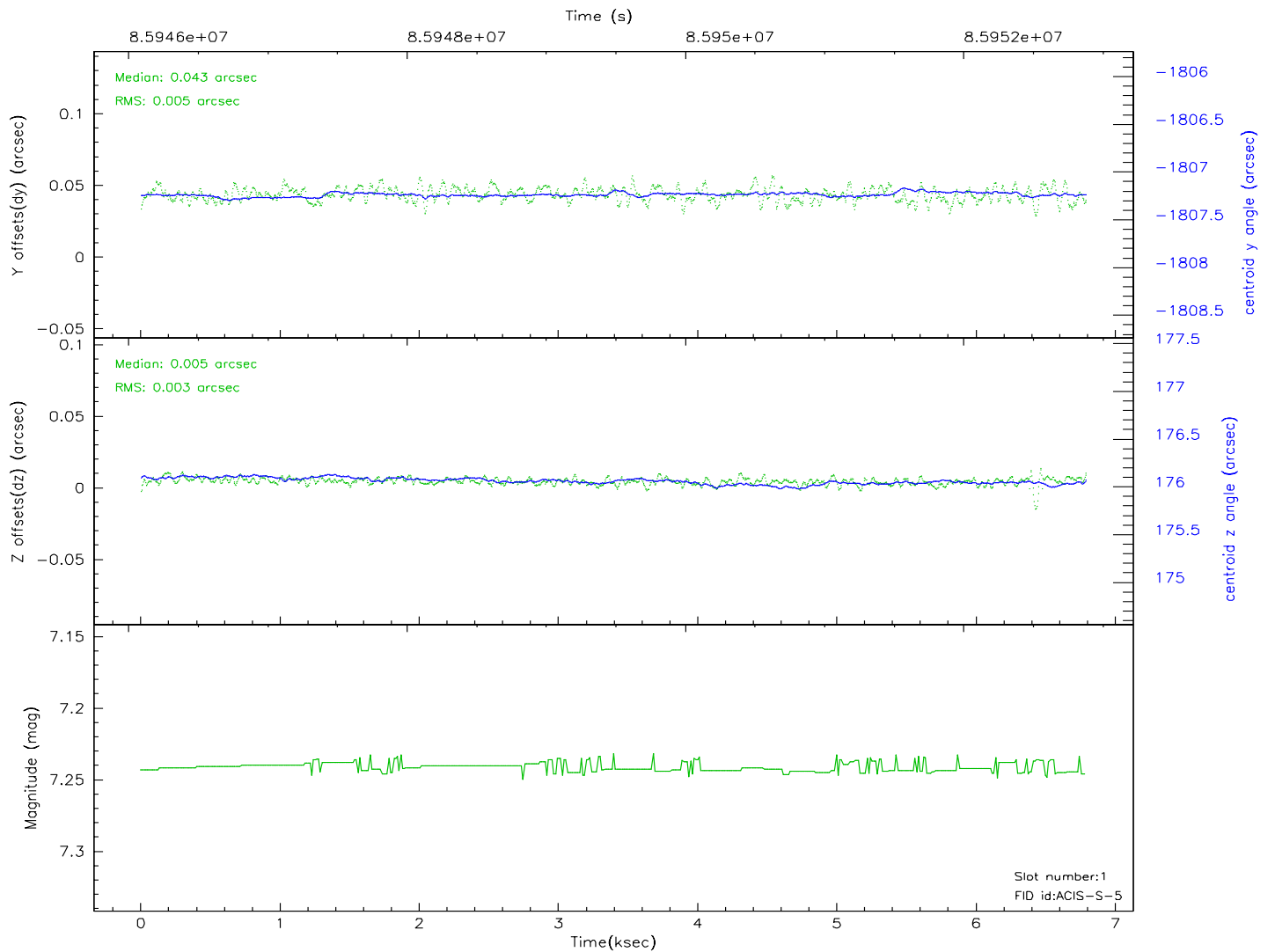
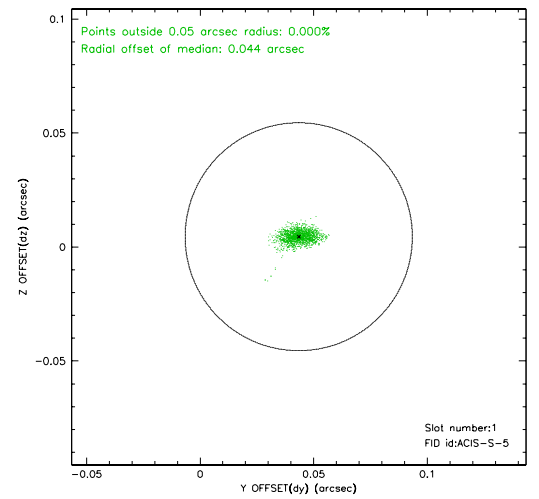
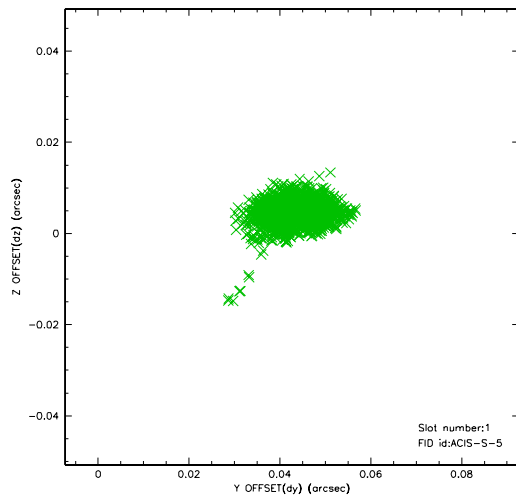


2.5 FID Slots

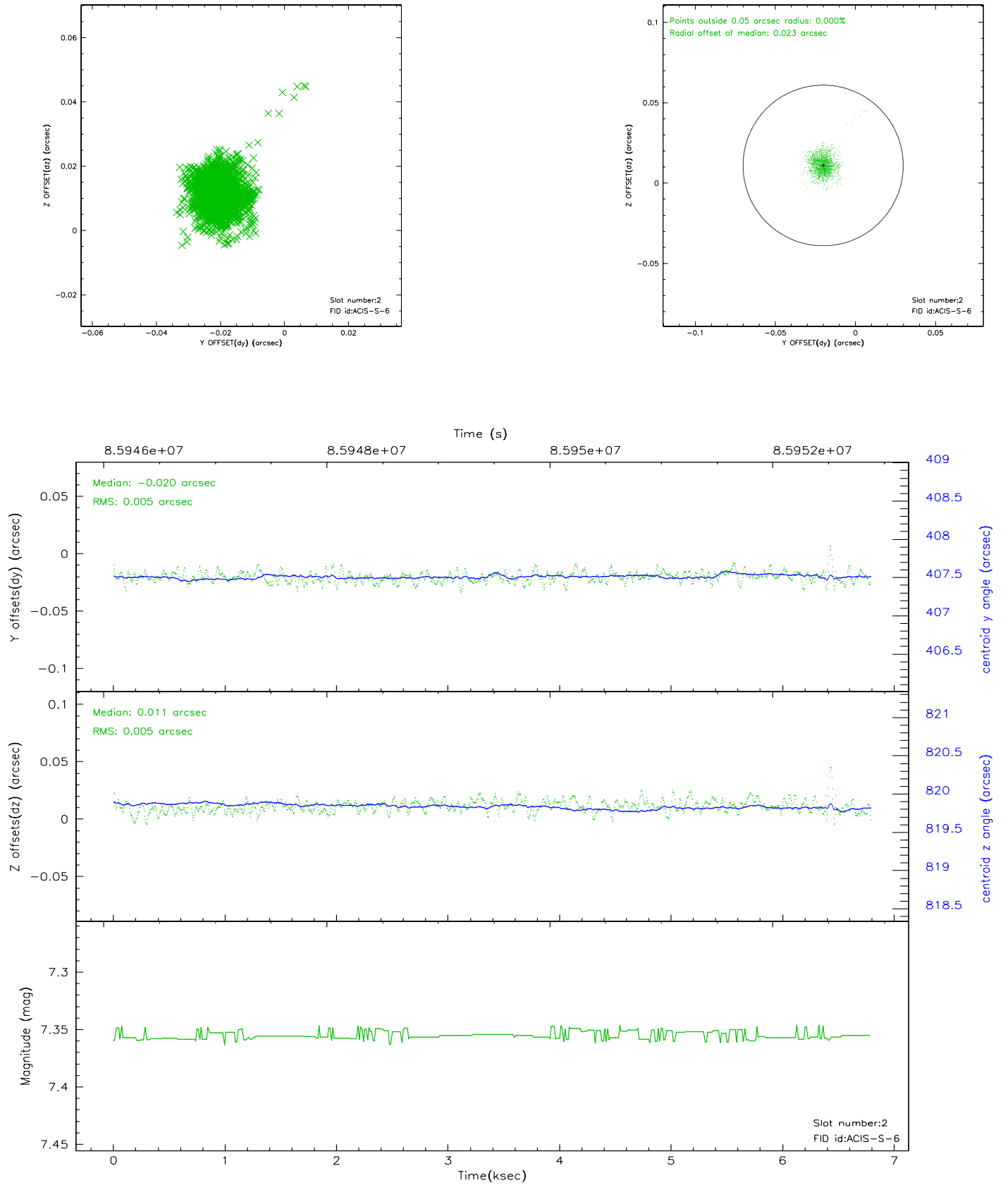
2.5.1 Slot 0



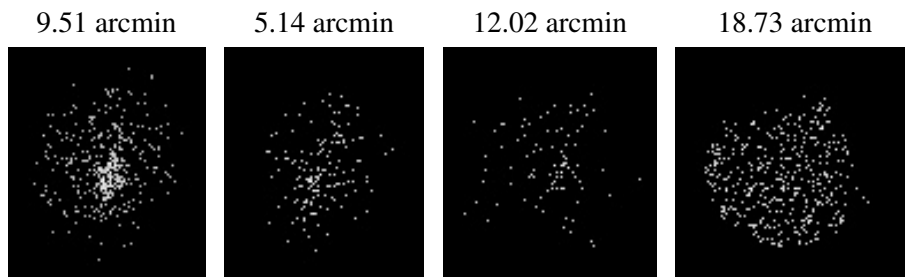
2.5.2 Slot 1



2.5.3 Slot 2



3 Point Sources



A Summary

A.1 Status

V&V Scientist	Jen Lauer
V&V Date (YYYY-MM-DD)	2007.06.08
V&V Edition	1
V&V Disposition and Status	OK
V&V Charge Time	6.054

A.2 Comments

Focal plane temperature is warmer than -118.7 C degrees during the entire observation. The ACIS spectral response calibration for the front-illuminated chips is less accurate at these warmer temperatures than it is at -119.7 C. The back-illuminated chips are not affected at the focal plane temperatures recorded for this observation. Users whose science objectives depend on the most accurate spectral response (i.e.: fitting line-rich spectra) may notice an effect. Users whose science objectives do not depend on the most accurate spectral response should not notice an effect.