

# V&V Reference Report

## L2 ASCDS Version : 7.6.10

Observation 311 - L2 Version 001  
Chandra X-Ray Center

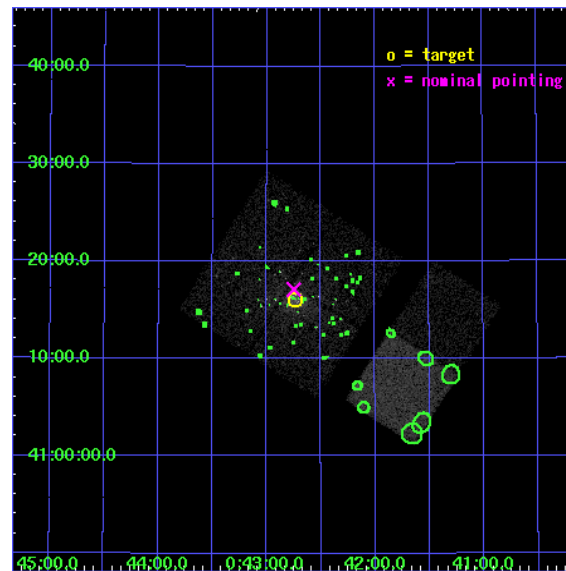
L2 Processing Date : Jun 1 2007

## Contents

<b>1</b>	<b>Front</b>	<b>2</b>
<b>2</b>	<b>OBI</b>	<b>3</b>
2.1	OBI . . . . .	3
2.1.1	Images . . . . .	3
2.1.2	Bias . . . . .	3
2.1.3	Parameters . . . . .	4
2.1.4	Events . . . . .	4
2.2	Compared Parameters . . . . .	5
2.3	Aspect . . . . .	6
2.4	Star Slots . . . . .	9
2.4.1	Slot 3 . . . . .	9
2.4.2	Slot 4 . . . . .	10
2.4.3	Slot 5 . . . . .	11
2.4.4	Slot 6 . . . . .	12
2.4.5	Slot 7 . . . . .	13
2.5	FID Slots . . . . .	14
2.5.1	Slot 0 . . . . .	14
2.5.2	Slot 1 . . . . .	15
2.5.3	Slot 2 . . . . .	16
<b>3</b>	<b>Point Sources</b>	<b>17</b>
<b>A</b>	<b>Summary</b>	<b>18</b>
A.1	Status . . . . .	18
A.2	Comments . . . . .	18

# 1 Front

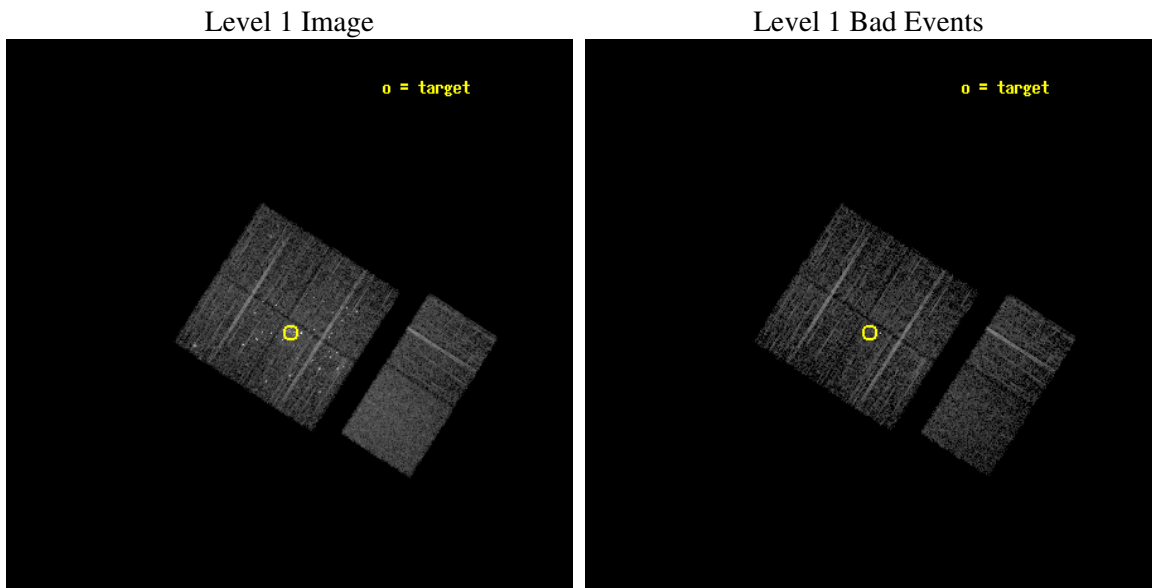
seq_num	600071
obs_id	311
title	M31 MONITORING (FOLLOWUP)
observer	Dr. Stephen Murray
object	M31 TRANSIENT TBD
dtcycle	0
cycle	P
ra_targ	10.685
dec_targ	41.268972
ra_nom	10.687368729026
dec_nom	41.28524955939
roll_nom	122.67265431702
revision	3
ontime	4956.8000046164
livetime	4894.0340183313
ontime0	4956.8000046164
ontime1	4956.8000046164
ontime2	4956.8000046164
ontime3	4956.8000046164
ontime6	4956.8000046164
ontime7	4956.8000046164
l2events	45182



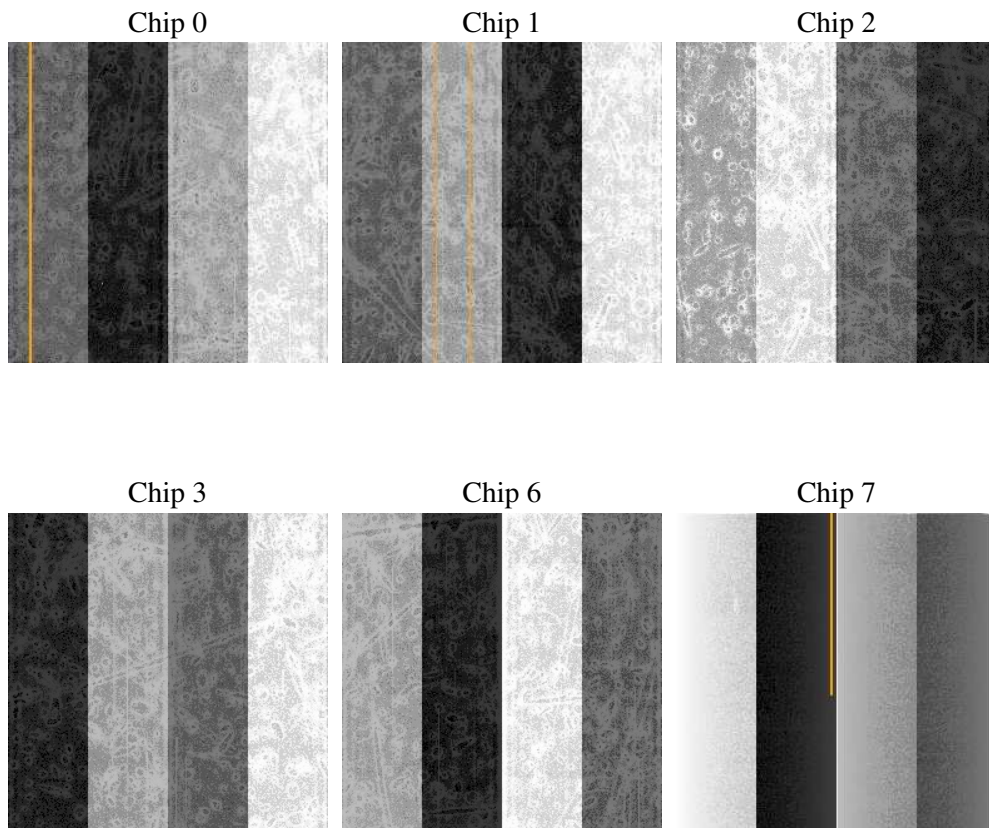
## 2 OBI

### 2.1 OBI

#### 2.1.1 Images



#### 2.1.2 Bias



### 2.1.3 Parameters

obi_num	0
ascdsver	7.6.10
caldsver	3.4.0
date	2007-06-01T02:36:03
revision	3

sched_exp_time	5000.000000
ontime	4956.8000046164
ontime0	4956.8000046164
ontime1	4956.8000046164
ontime2	4956.8000046164
ontime3	4956.8000046164
ontime6	4956.8000046164
ontime7	4956.8000046164
l1events	196237

### 2.1.4 Events

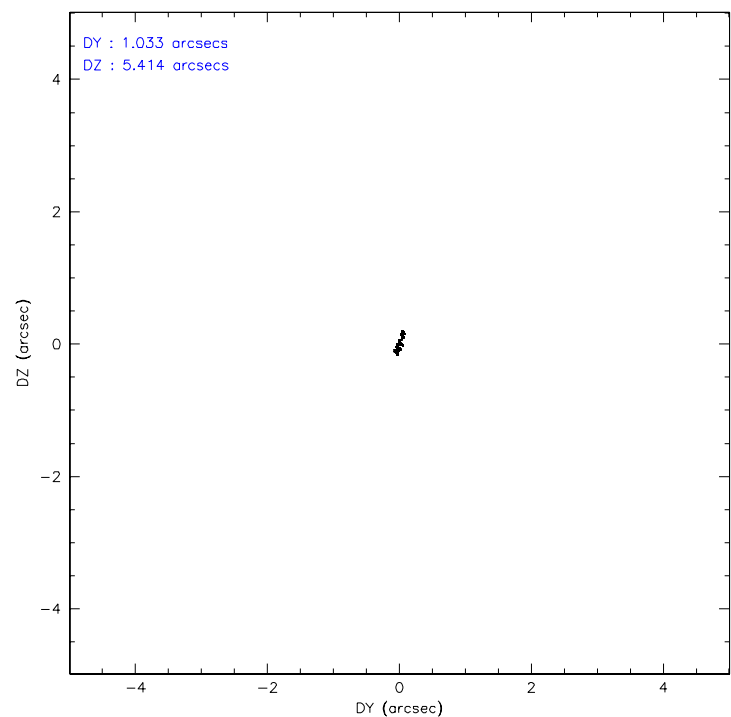
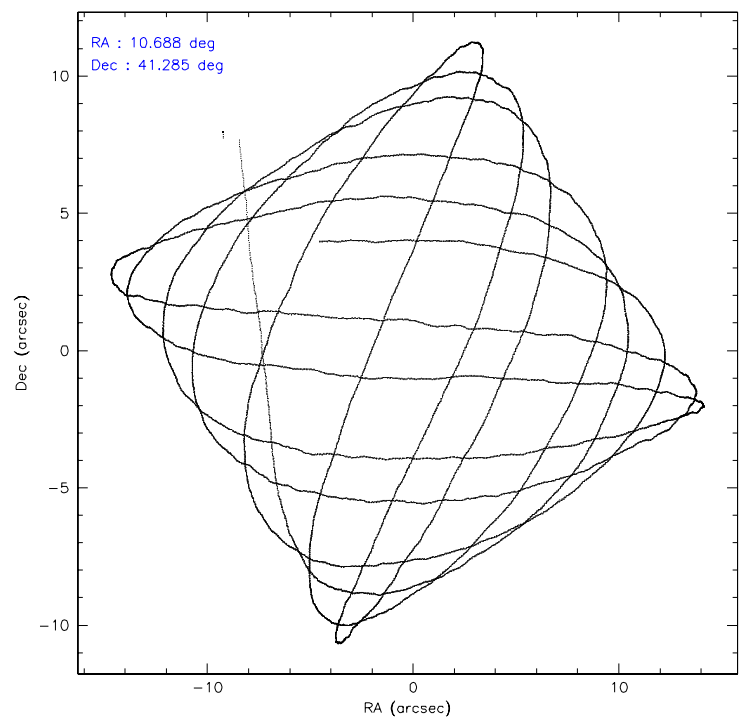
	ccd 0	ccd 1	ccd 2	ccd 3	ccd 6	ccd 7
level 1 events	28073	32171	31592	39336	29715	35350
rejected events	23380	24891	25644	27161	26241	20146
rejected %	83%	77%	81%	69%	88%	56%

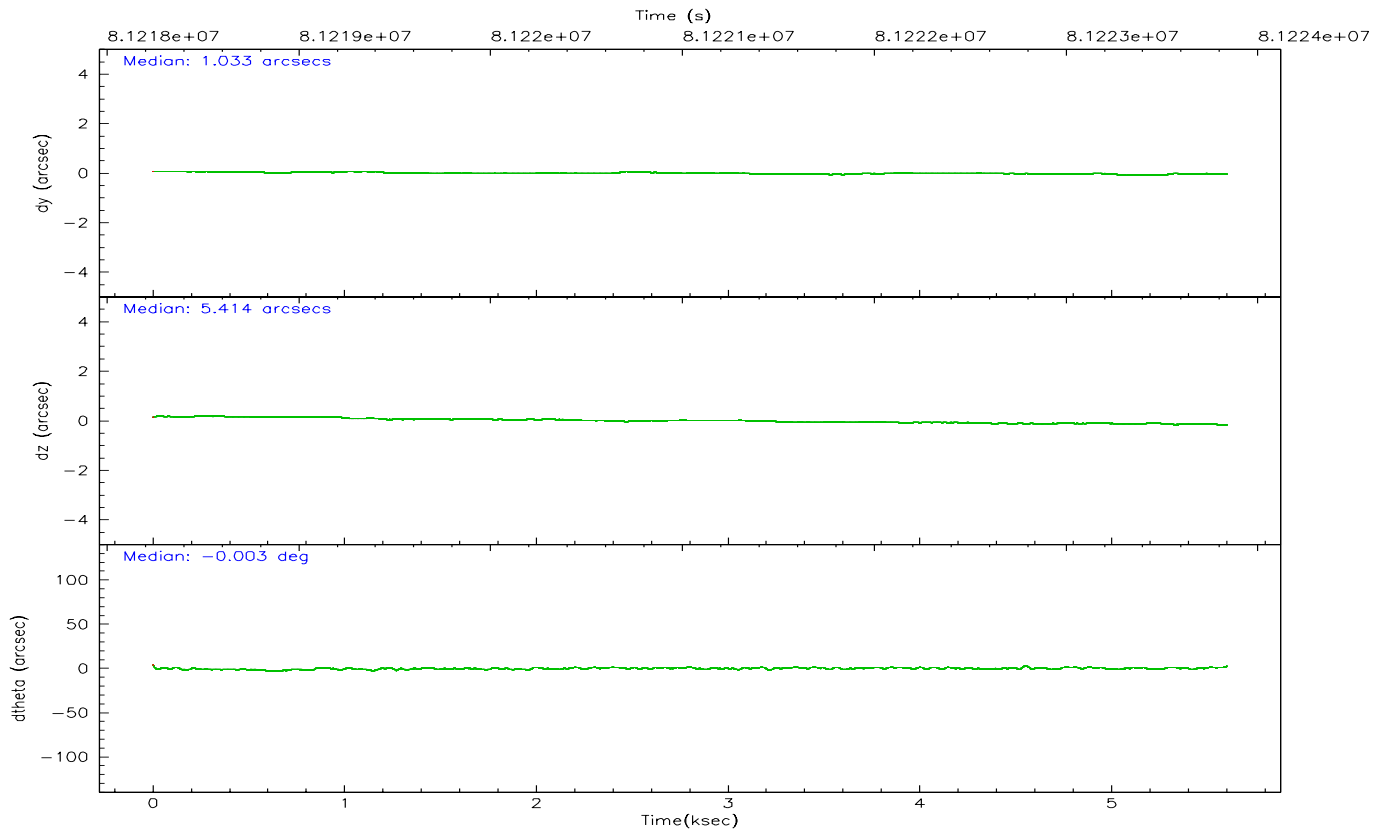
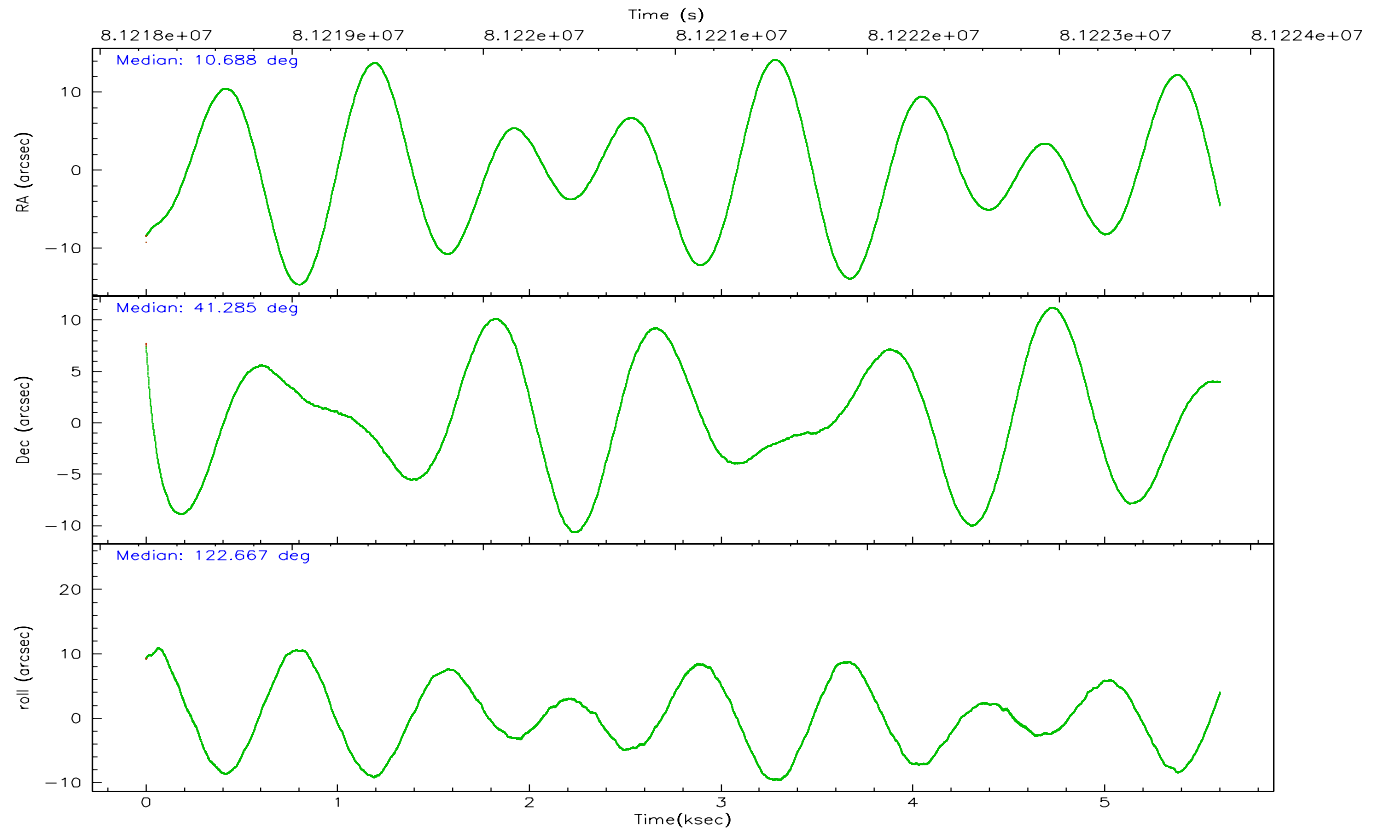
	ccd 0	ccd 1	ccd 2	ccd 3	ccd 6	ccd 7
grade 0 events	2578	4504	3669	8557	1469	1593
	9%	14%	11%	21%	4%	4%
grade 1 events	32	48	30	215	14	37
	0%	0%	0%	0%	0%	0%
grade 2 events	815	1134	960	1604	726	3125
	2%	3%	3%	4%	2%	8%
grade 3 events	384	444	359	569	329	1390
	1%	1%	1%	1%	1%	3%
grade 4 events	343	461	345	609	298	1394
	1%	1%	1%	1%	1%	3%
grade 5 events	913	1032	883	1166	1138	3390
	3%	3%	2%	2%	3%	9%
grade 6 events	578	740	620	844	656	7713
	2%	2%	1%	2%	2%	21%
grade 7 events	22430	23808	24726	25772	25085	16708
	79%	74%	78%	65%	84%	47%

## 2.2 Compared Parameters

Parameter	Planned	Actual	Parameter	Planned	Actual
Instrument	ACIS	ACIS	Obspar format version number	6	6
Detector	ACIS-012367	ACIS-012367	Obspar file type	PREDICTED	ACTUAL
Grating	NONE	NONE	Obspar update status	NONE	UPDATED
Data mode	FAINT	FAINT	Number of optional ACIS chips dropped	0	0
Observation mode	POINTING	POINTING	On-chip summing requested	N	N
Pointing RA	10.719796	10.687368729026	Subarray requested	NONE	NONE
Pointing Dec	41.272567	41.28524955939009	Alternating exposures requested	N	N
Pointing Roll	122.442574	122.6726543170221	Primary exposure time	3.200000	3.2
SIM focus pos (mm)	-0.782348	-0.7809083437167272			
SIM defocus (mm)	0	0.001439871863259334			
SIM translation stage pos (mm)	-233.592463	-233.5874344608287			
SIM translation stage offset (mm)	0	-0.005018542100998502			
Observation start time	81218843.184000	81217674.591829			
Observation start date	2000-07-29T00:46:19	2000-07-29T00:27:54			
Observation end time	81223843.184000	81224420.62958001			
Observation end date	2000-07-29T02:09:39	2000-07-29T02:20:20			
Read mode	TIMED	TIMED			

2.3 Aspect



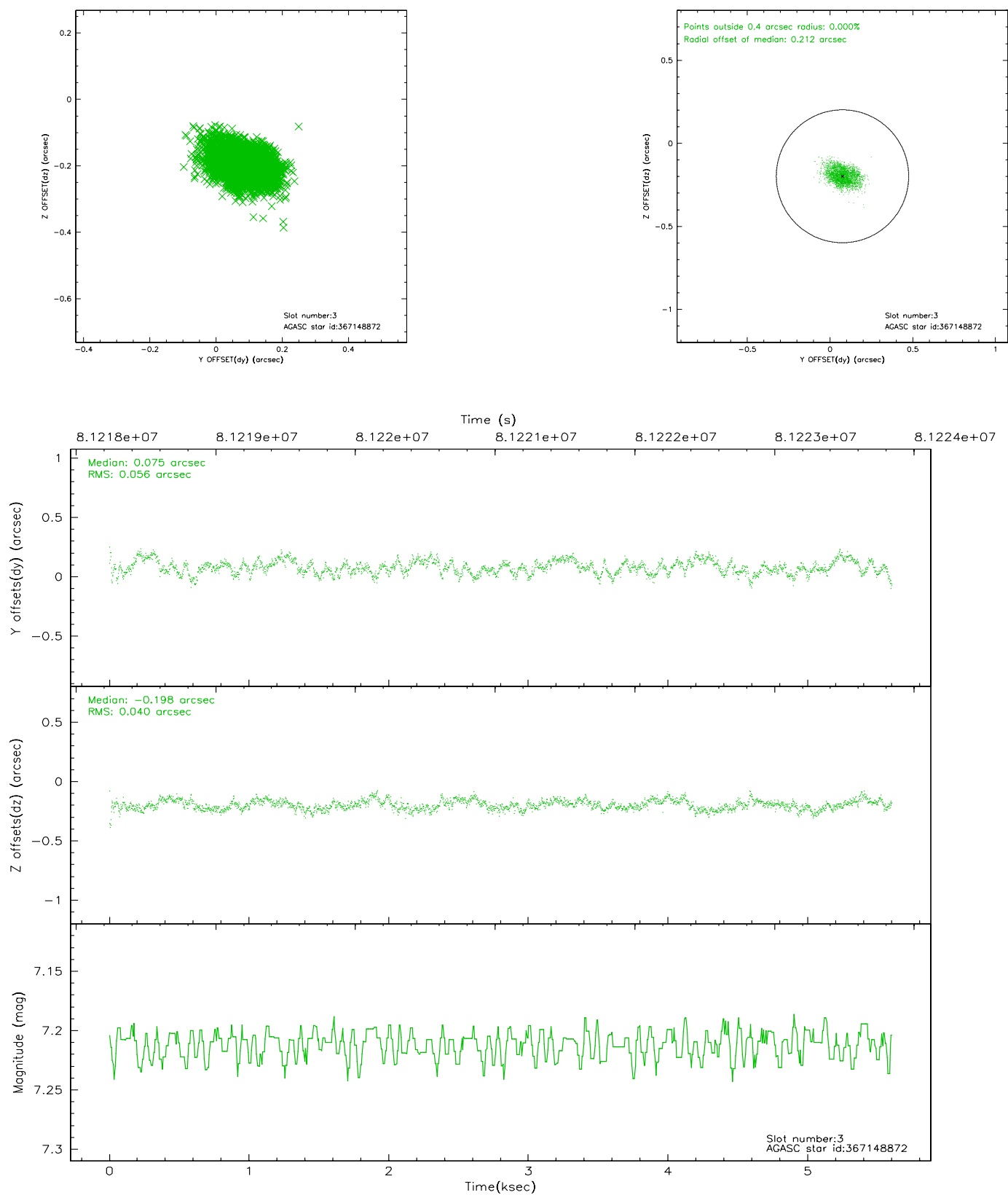


### Slot Statistics

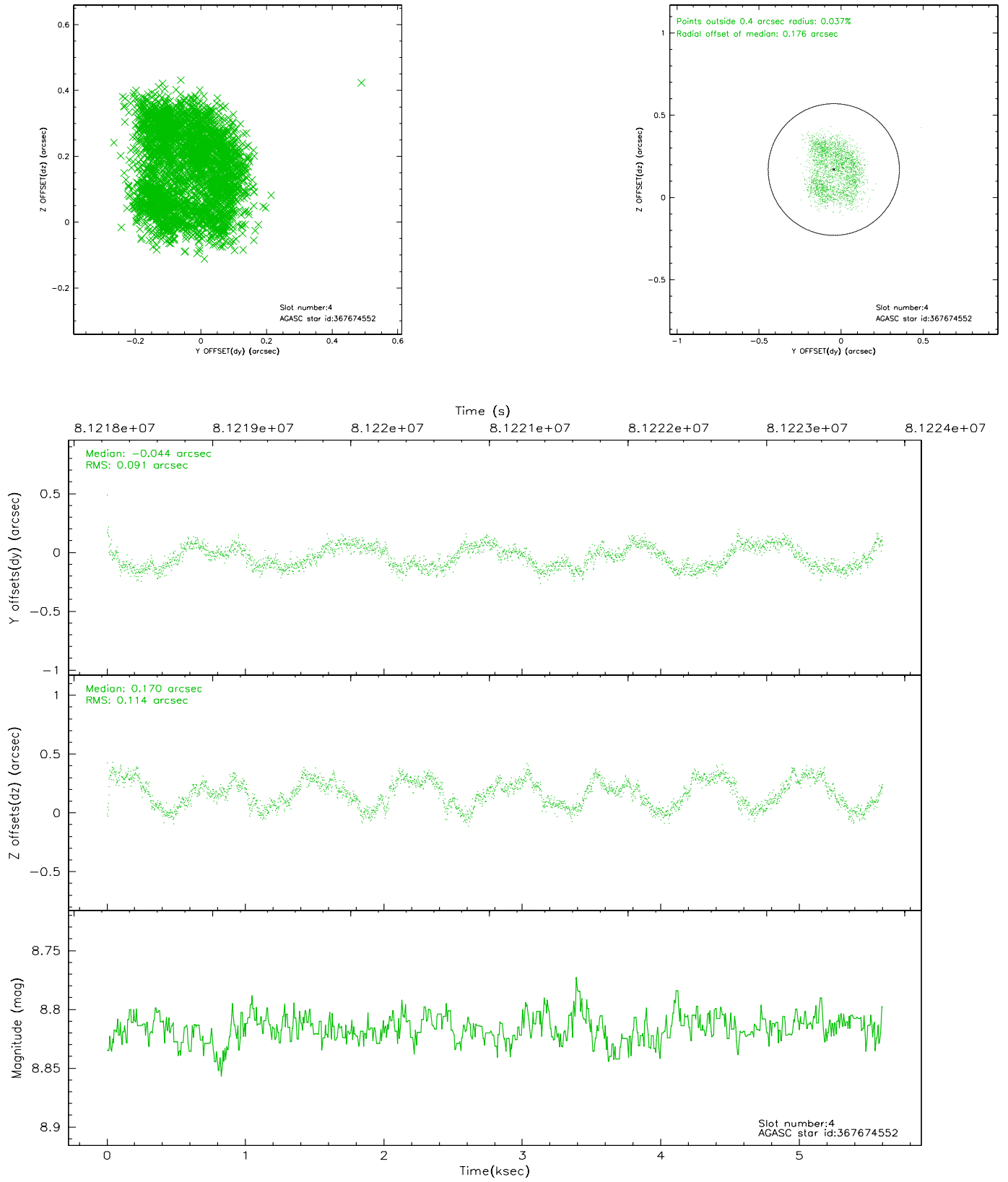
slot	status	id	mag	n_pts	med_dy	med_dz	dr1	dr2	ra	dec	mean_y	mean_z
0	FID	ACIS-I-2	7.15	1367	-0.024	0.014	0.006	0.010	0.000000	0.000000	-755.38	-835.13
1	FID	ACIS-I-4	7.19	1366	-0.079	0.020	0.007	0.013	0.000000	0.000000	2158.13	1070.54
2	FID	ACIS-I-6	7.26	1367	0.004	0.029	0.010	0.017	0.000000	0.000000	406.09	1713.94
3	GUIDE	367148872	7.21	2734	0.075	-0.198	0.072	0.118	10.505940	40.688258	-1461.13	1620.94
4	GUIDE	367674552	8.82	2734	-0.044	0.170	0.160	0.221	11.016238	41.570845	479.07	-1249.26
5	GUIDE	367146616	8.85	2734	0.097	0.166	0.073	0.120	11.418645	41.190163	-1258.70	-1442.63
6	GUIDE	367658664	9.58	2731	-0.018	-0.088	0.101	0.167	10.374070	41.369746	797.80	599.56
7	GUIDE	367665472	9.49	2732	-0.120	-0.041	0.093	0.148	10.241611	41.730843	2085.10	198.17

## 2.4 Star Slots

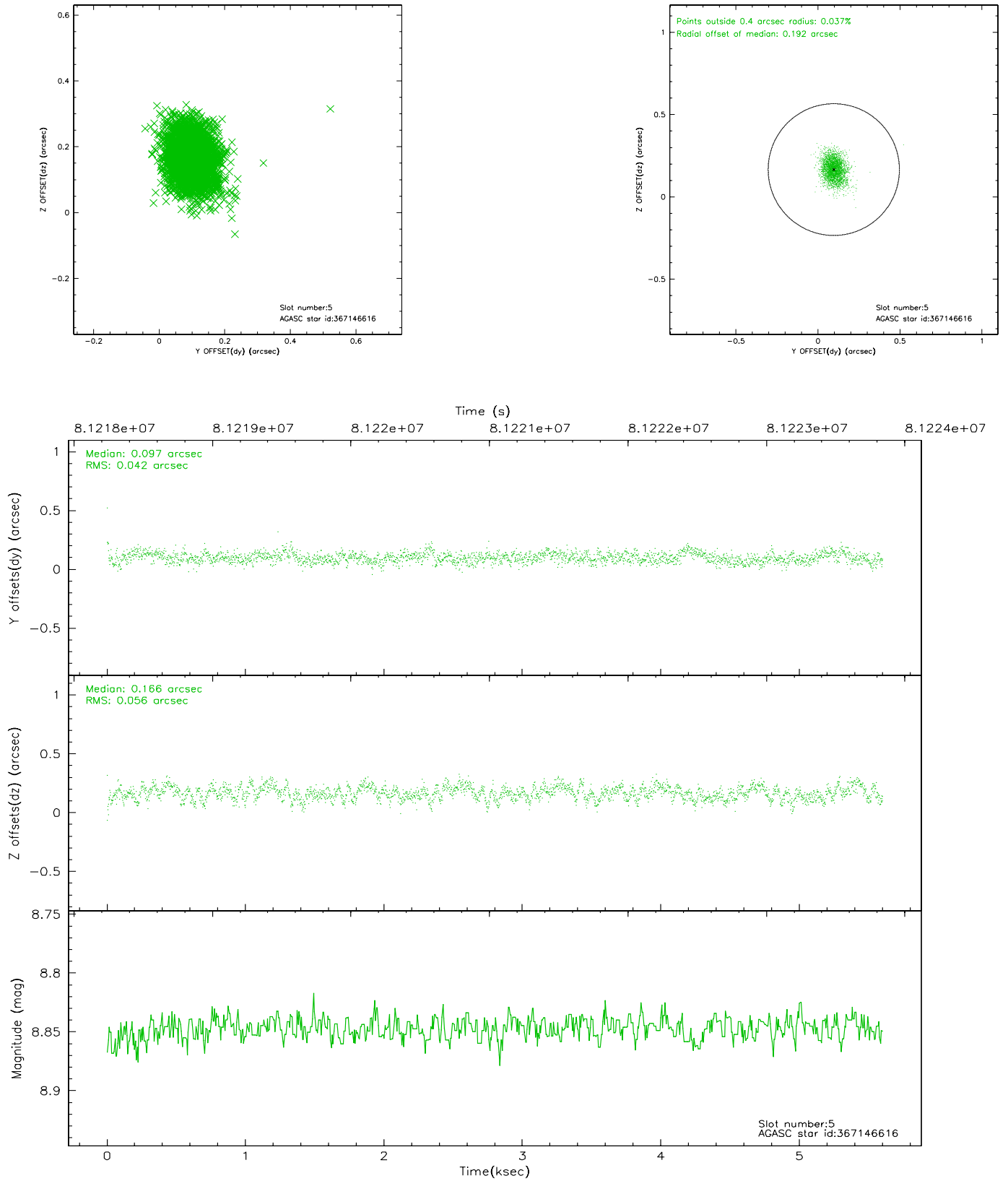
### 2.4.1 Slot 3



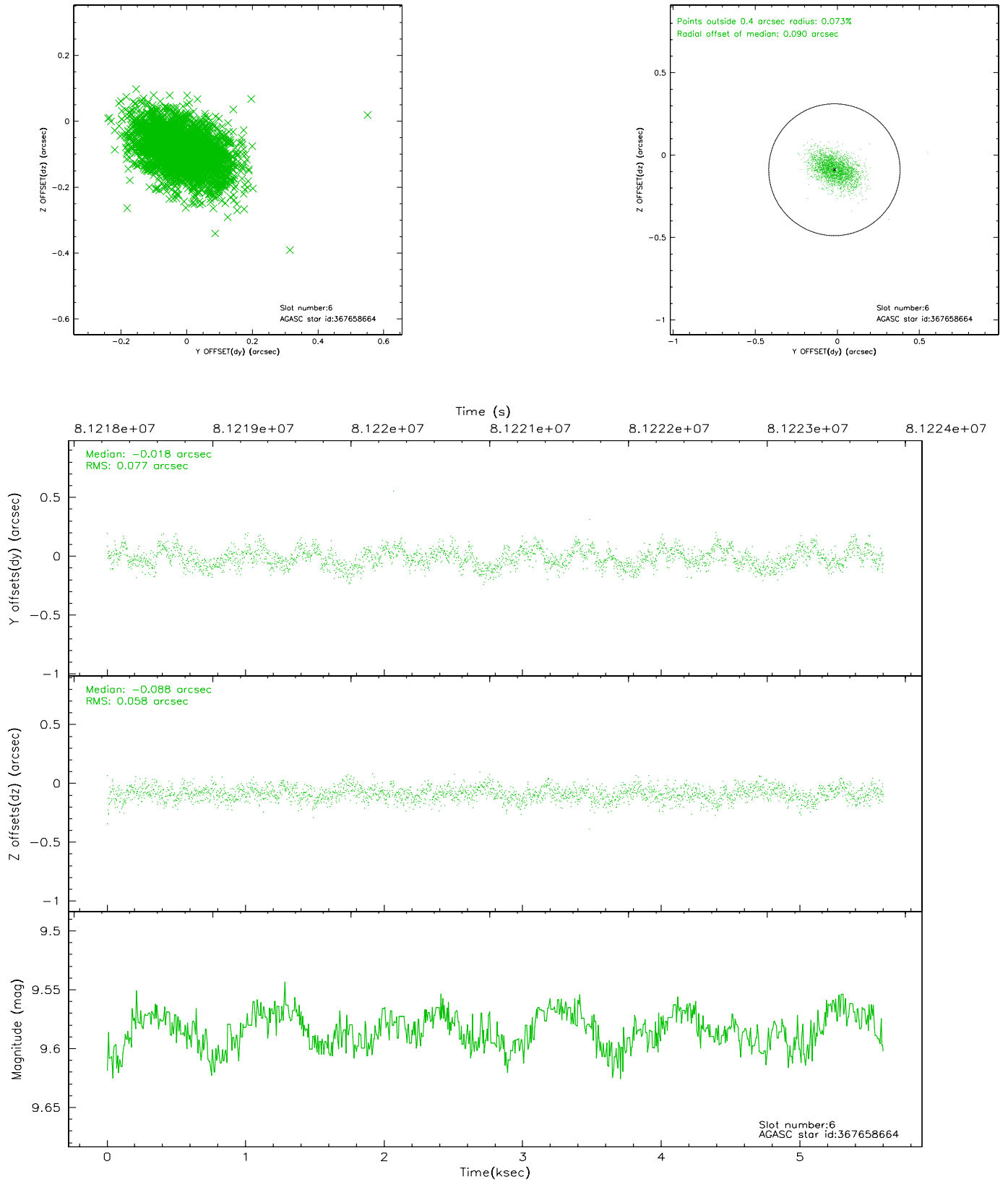
## 2.4.2 Slot 4



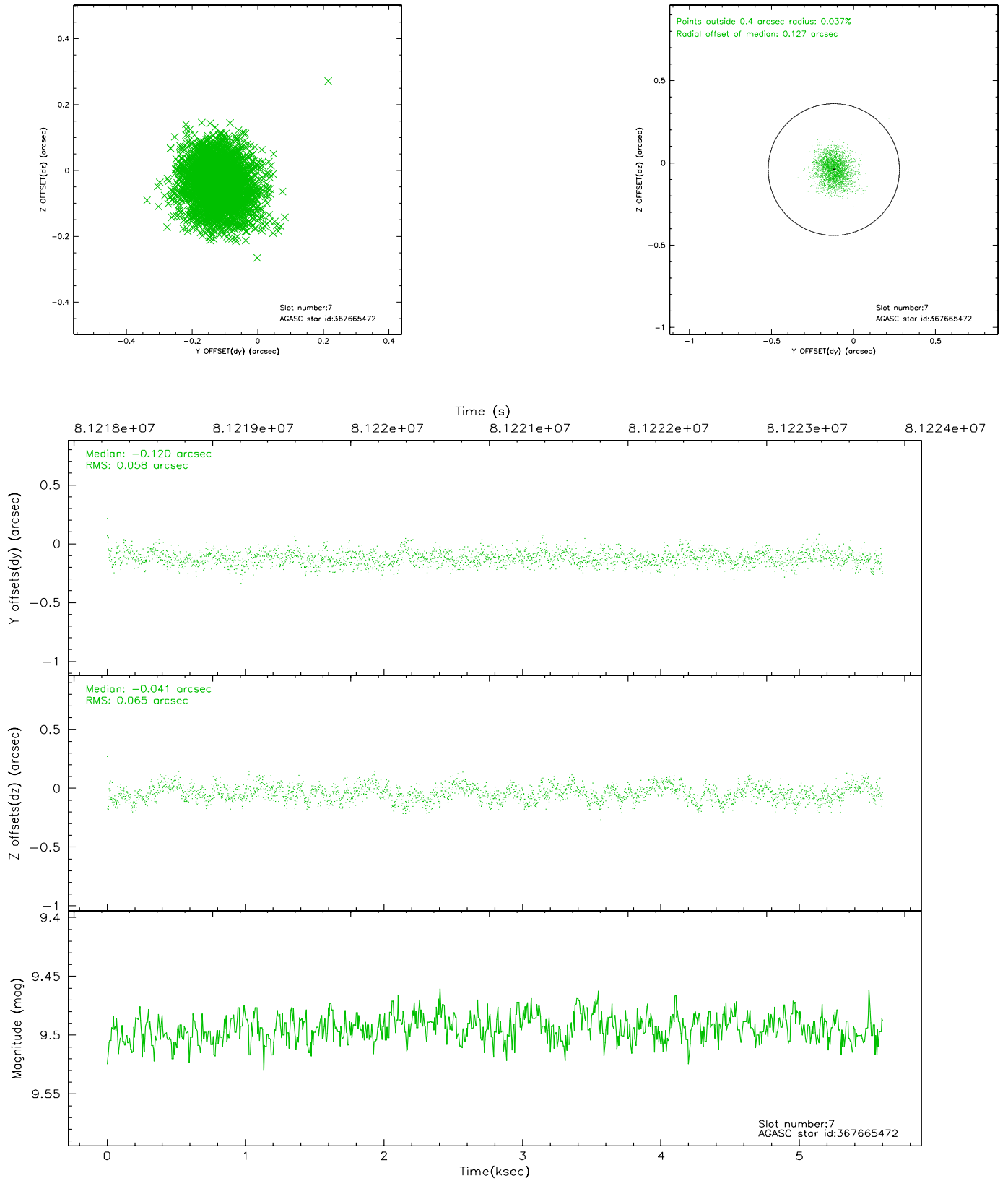
### 2.4.3 Slot 5



## 2.4.4 Slot 6

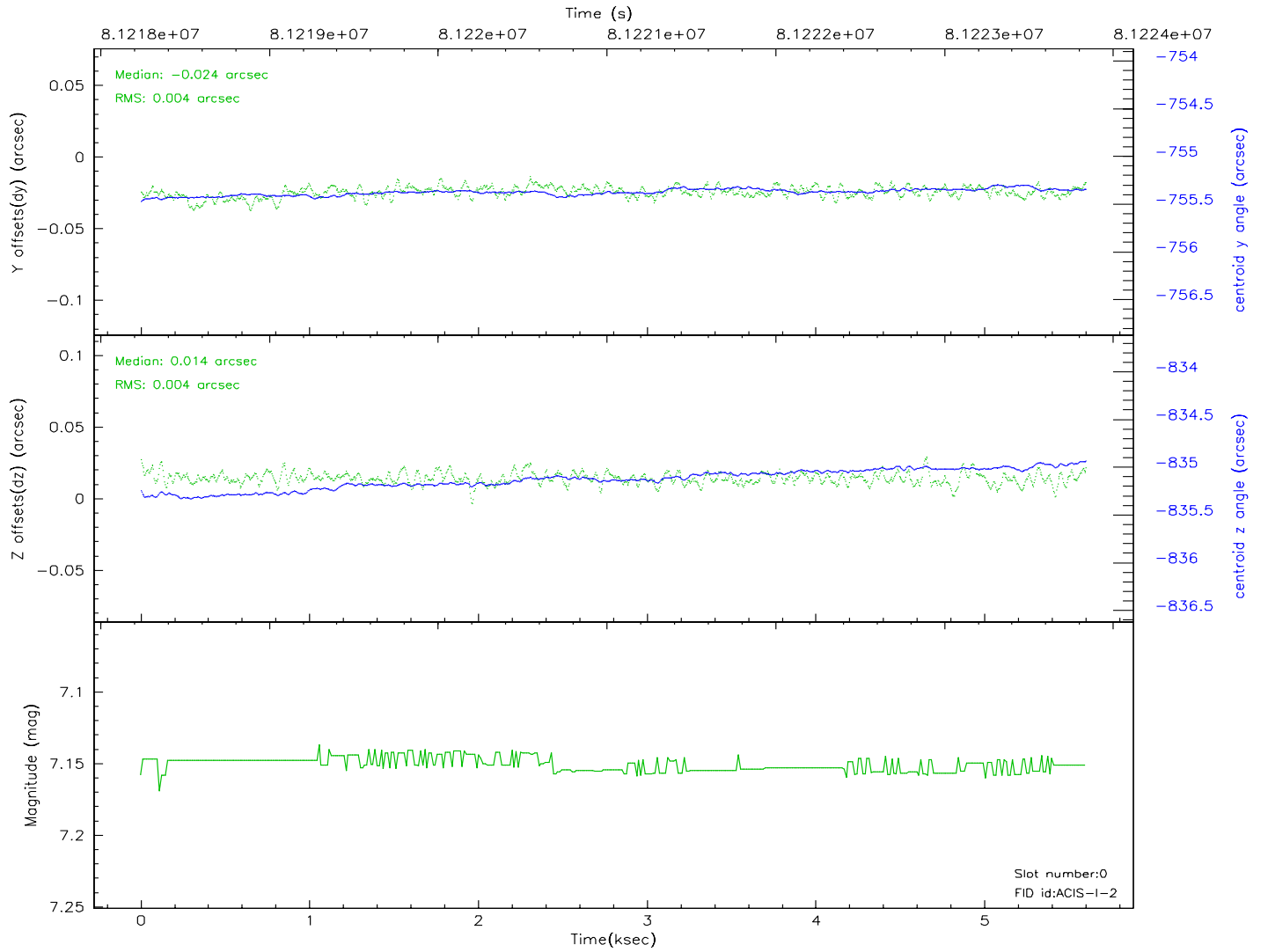
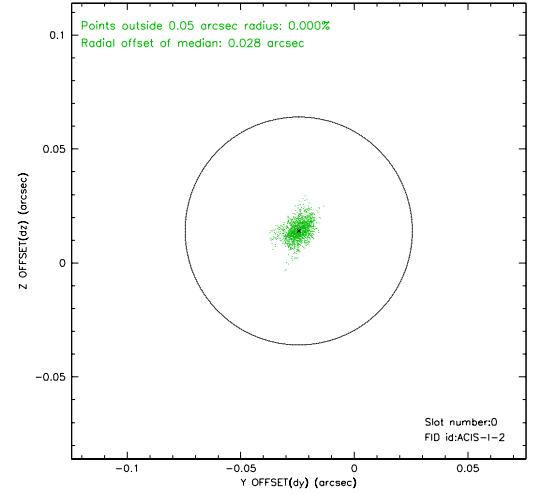
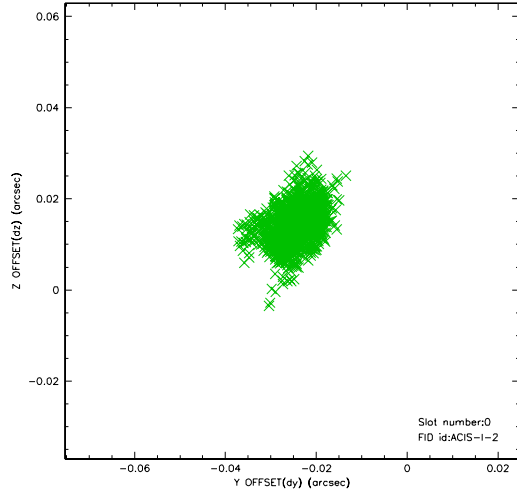


## 2.4.5 Slot 7

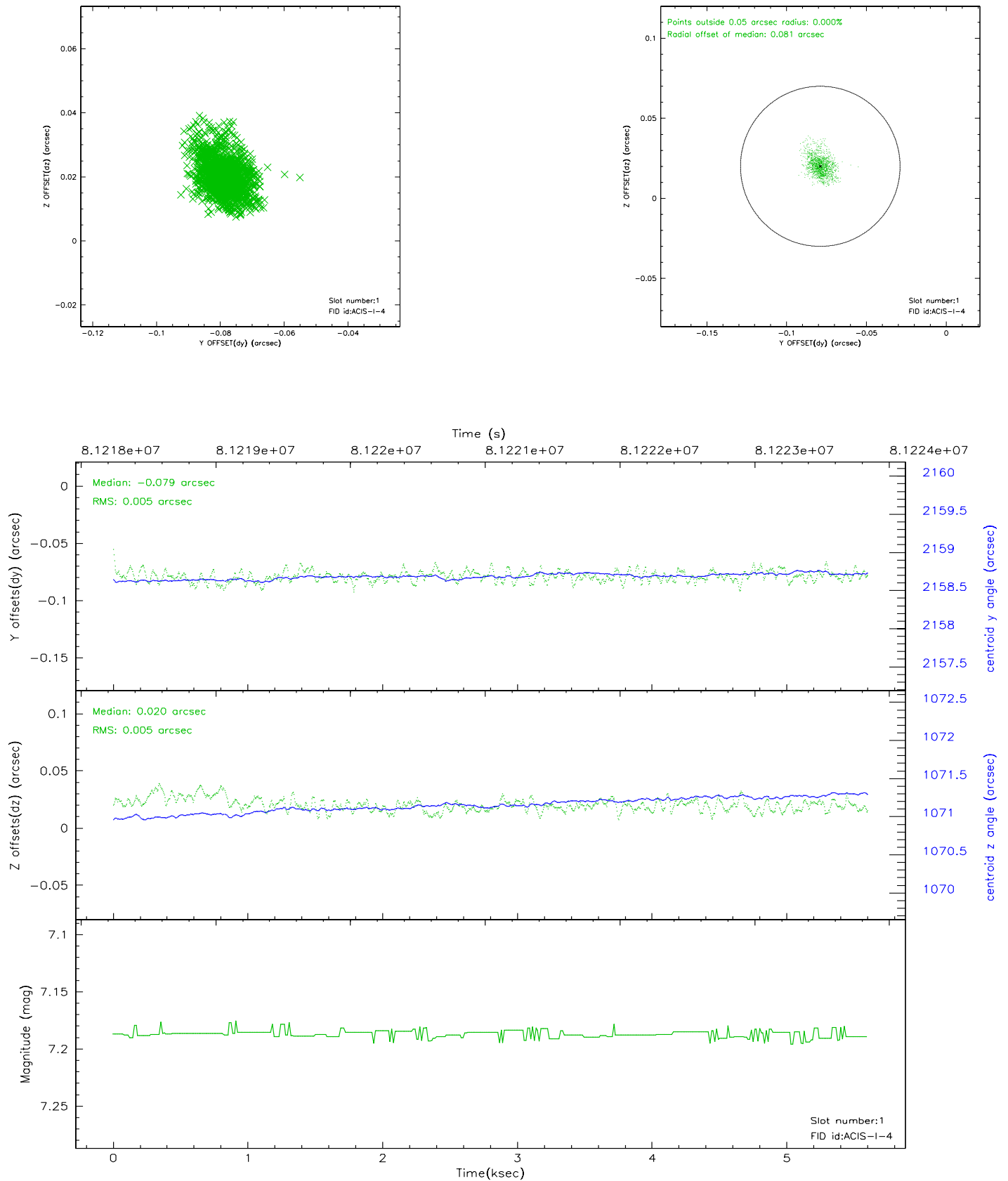


## 2.5 FID Slots

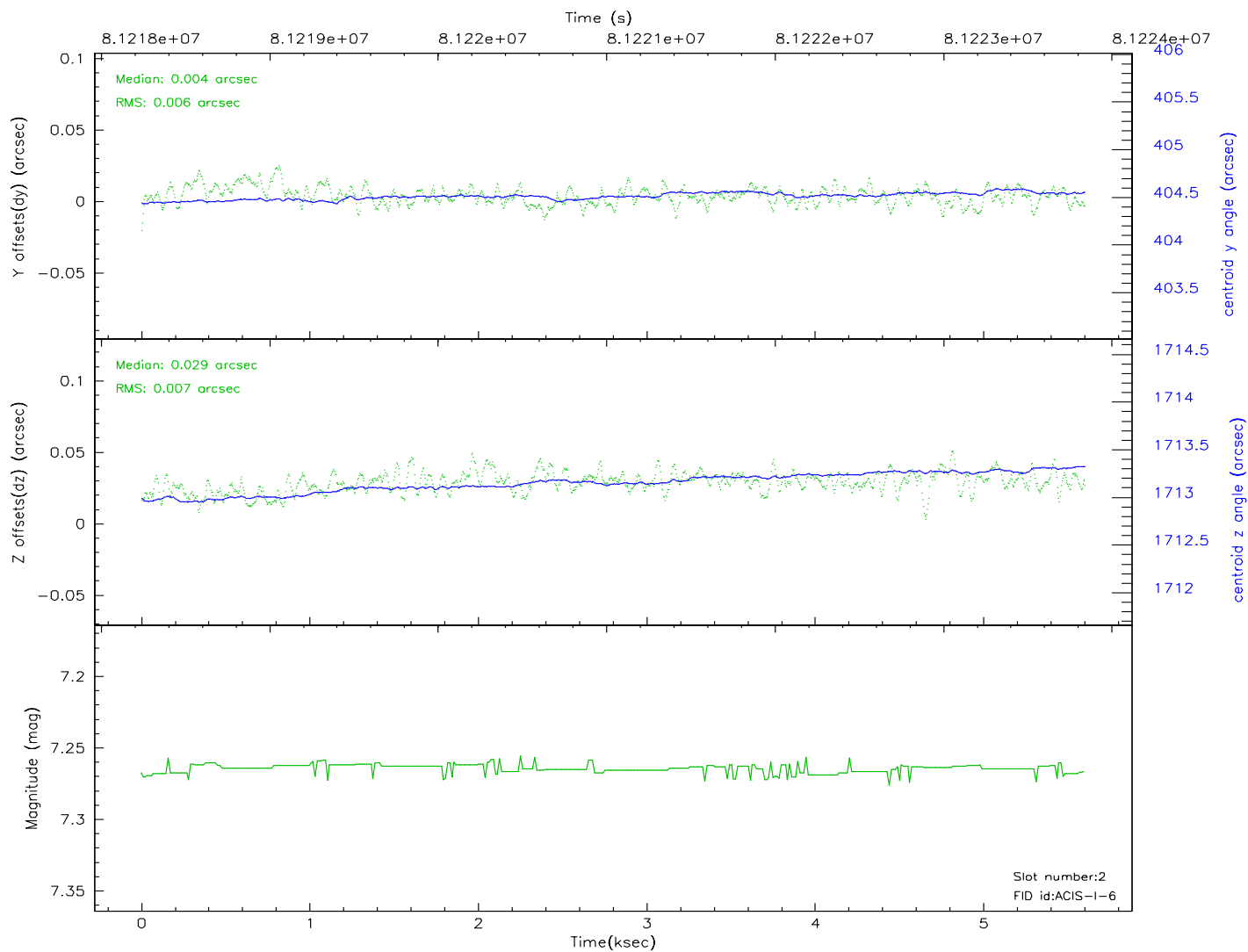
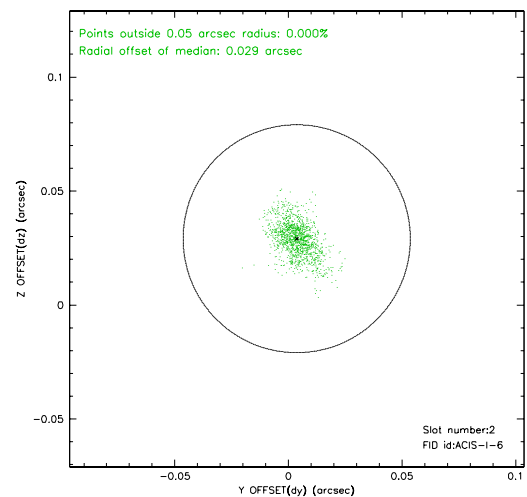
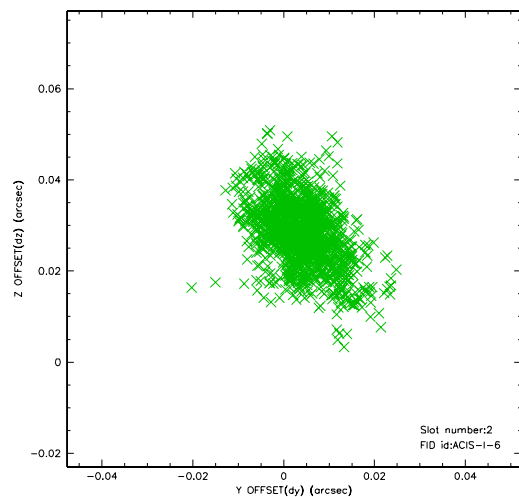
### 2.5.1 Slot 0



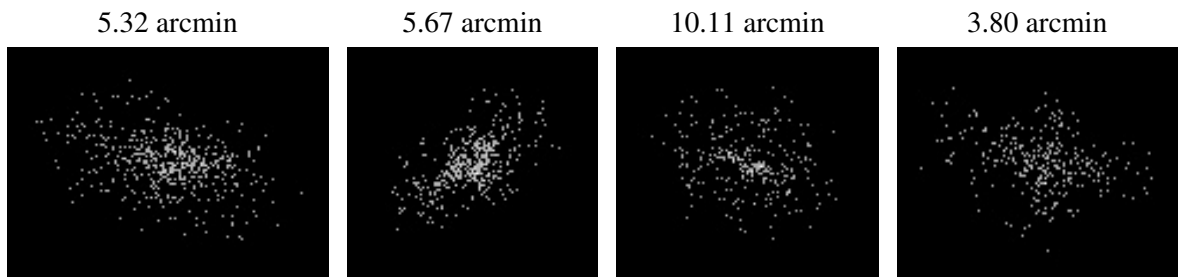
## 2.5.2 Slot 1



### 2.5.3 Slot 2



### 3 Point Sources



## A Summary

### A.1 Status

V&V Scientist	Beth Sundheim
V&V Date (YYYY-MM-DD)	2007.06.01
V&V Edition	1
V&V Disposition and Status	OK
V&V Charge Time	4.956

### A.2 Comments