

# V&V Reference Report

## L2 ASCDS Version : 8.4.5

Observation 952 - L2 Version 4  
Chandra X-Ray Center

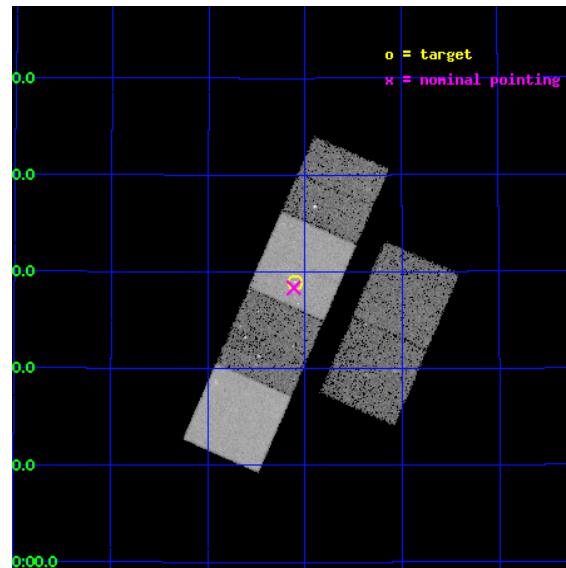
L2 Processing Date : Aug 31 2012

## Contents

<b>1</b>	<b>Front</b>	<b>2</b>
<b>2</b>	<b>OBI</b>	<b>3</b>
2.1	OBI . . . . .	3
2.1.1	Images . . . . .	3
2.1.2	Bias . . . . .	3
2.1.3	Parameters . . . . .	4
2.1.4	Events . . . . .	4
2.2	Compared Parameters . . . . .	5
2.3	Aspect . . . . .	6
2.4	Star Slots . . . . .	9
2.4.1	Slot 3 . . . . .	9
2.4.2	Slot 4 . . . . .	10
2.4.3	Slot 5 . . . . .	11
2.4.4	Slot 6 . . . . .	12
2.4.5	Slot 7 . . . . .	13
2.5	FID Slots . . . . .	14
2.5.1	Slot 0 . . . . .	14
2.5.2	Slot 1 . . . . .	15
2.5.3	Slot 2 . . . . .	16
<b>A</b>	<b>Summary</b>	<b>17</b>
A.1	Status . . . . .	17
A.2	Comments . . . . .	17

# 1 Front

seq_num	500079	Sequence number
obs_id	952	Observation id
title	PROMPT AXAF OBSERVATIONS OF NEARBY SUPERNOVAE	Proposal title
observer	Prof. Walter Lewin	Principal investigator
object	SN1998S	Source name
dtcycle	0	&#160
cycle	P	events from which exps? Prim/Second/Both
ra_targ	176.52546	Observer's specified target RA [deg]
dec_targ	47.482167	Observer's specified target Dec [deg]
ra_nom	176.52880659423	Nominal RA [deg]
dec_nom	47.472509996251	Nominal Dec [deg]
roll_nom	293.57525688547	Nominal Roll [deg]
revision	4	Processing version of data
ontime	20025.079659462	Sum of GTIs [s]
livetime	19771.510043159	Livetime [s]
ontime2	20025.120729387	Sum of GTIs [s]
ontime3	20024.956569389	Sum of GTIs [s]
ontime5	20025.038619459	Sum of GTIs [s]
ontime6	20021.756629229	Sum of GTIs [s]
ontime7	20025.079659462	Sum of GTIs [s]
ontime8	20021.674569145	Sum of GTIs [s]
l2events	176509	Number of level 2 events

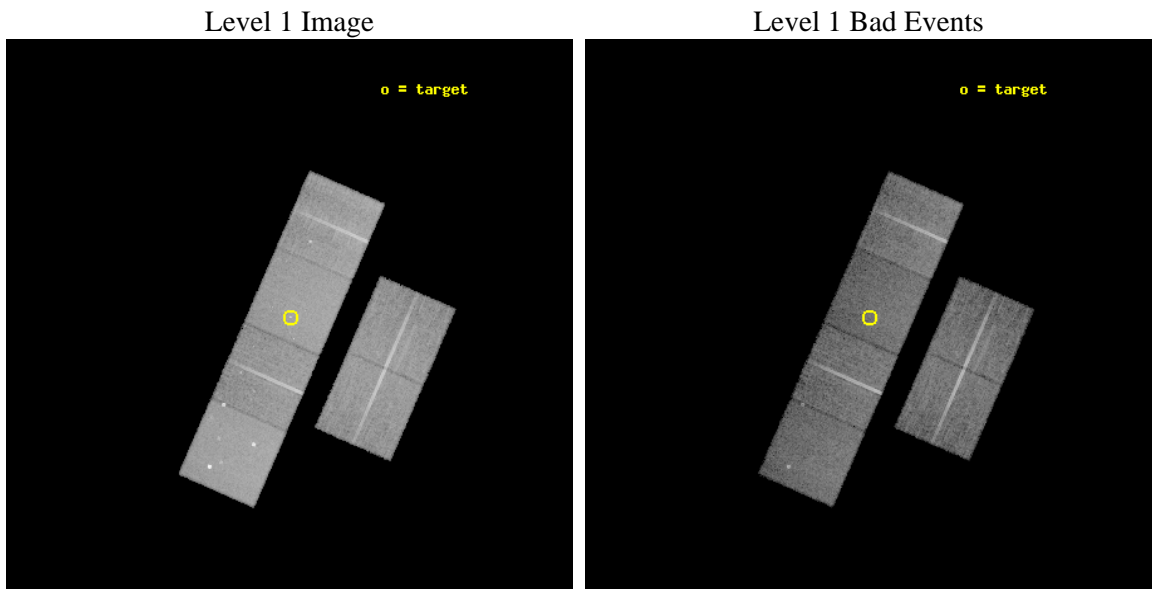




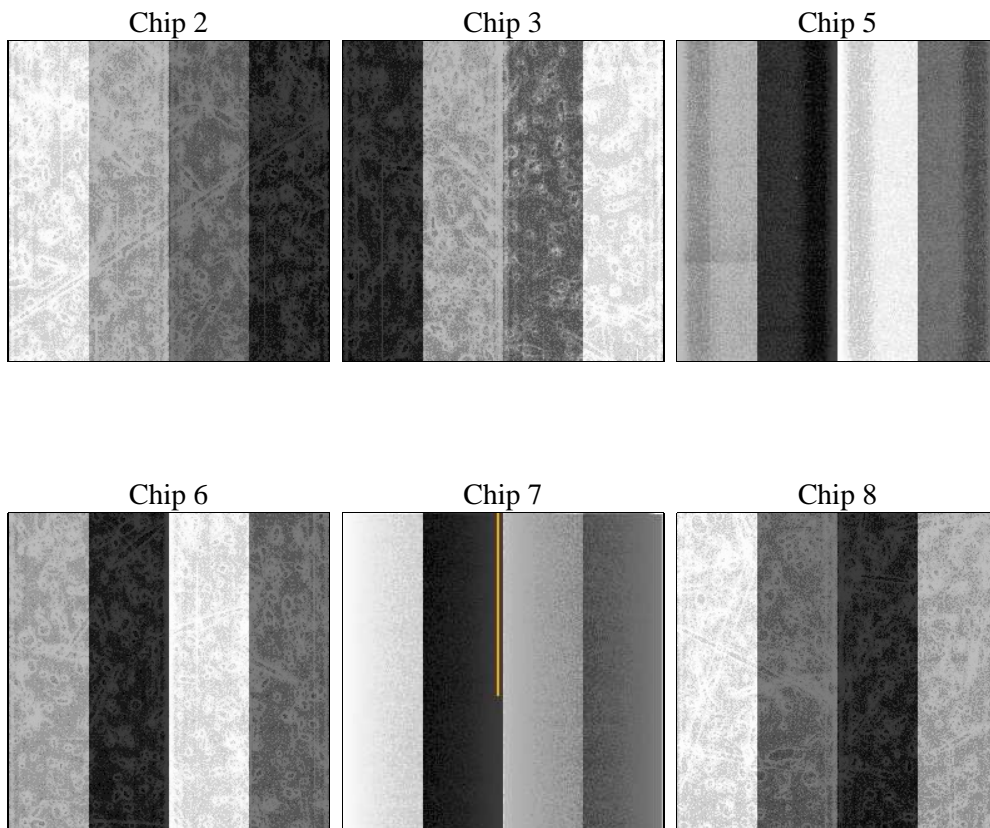
## 2 OBI

### 2.1 OBI

#### 2.1.1 Images



#### 2.1.2 Bias



### 2.1.3 Parameters

obi_num	0	Obi number	sched_exp_time	20271.565000	[s] Scheduled observation exposure time
ascdsver	8.4.5	Processing system revision	ontime	20025.079659462	Sum of GTIs [s]
caldsver	4.5.1.1	&#160	ontime2	20025.120729387	Sum of GTIs [s]
date	2012-08-31T12:19:38	Date and time of file creation	ontime3	20024.956569389	Sum of GTIs [s]
revision	4	Processing version of data	ontime5	20025.038619459	Sum of GTIs [s]
			ontime6	20021.756629229	Sum of GTIs [s]
			ontime7	20025.079659462	Sum of GTIs [s]
			ontime8	20021.674569145	Sum of GTIs [s]
			l1events	816122	Number of level 1 events

### 2.1.4 Events

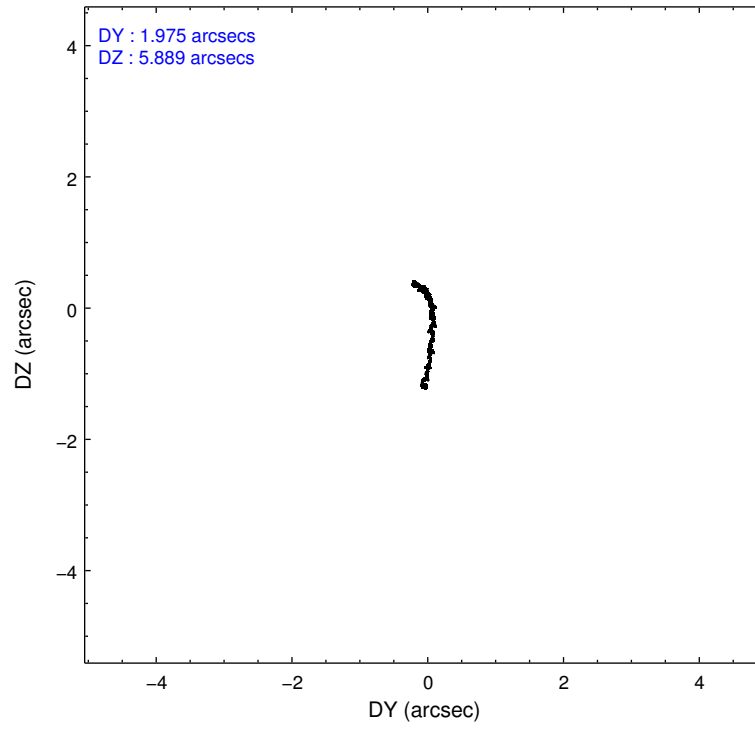
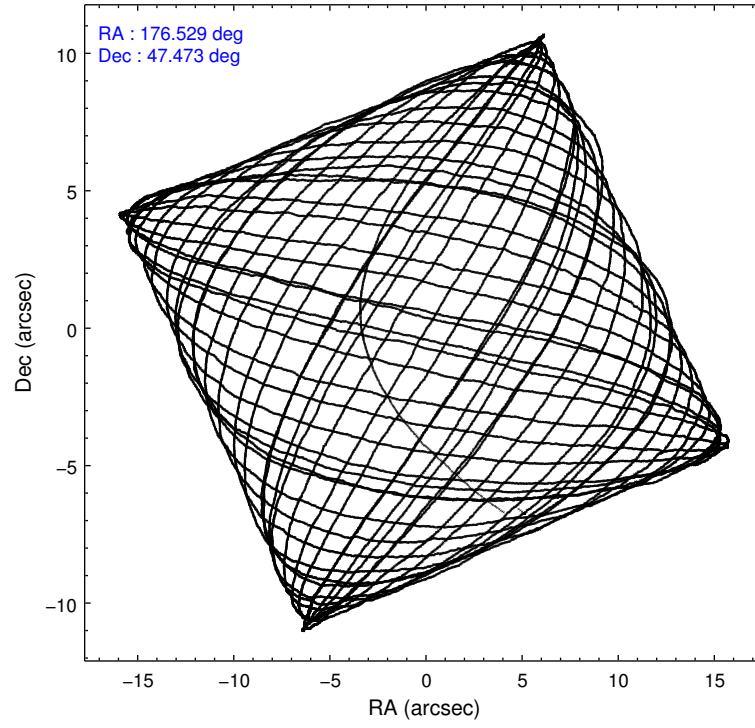
	ccd 2	ccd 3	ccd 5	ccd 6	ccd 7	ccd 8		ccd 2	ccd 3	ccd 5	ccd 6	ccd 7	ccd 8
level 1 events	119957	114985	167067	118735	145997	149381	grade 0 events	5357	5536	12468	5990	6253	9478
rejected events	107025	102135	87574	104729	84246	121092		4%	4%	7%	5%	4%	6%
rejected %	89%	88%	52%	88%	57%	81%	grade 1 events	53	51	1031	57	140	87
								0%	0%	0%	0%	0%	0%
							grade 2 events	2776	2571	22723	2648	12200	5873
								2%	2%	13%	2%	8%	3%
							grade 3 events	1280	1308	3389	1353	5615	3095
								1%	1%	2%	1%	3%	2%
							grade 4 events	1207	1218	3135	1362	5567	2829
								1%	1%	1%	1%	3%	1%
							grade 5 events	3869	4158	12152	4796	13757	6022
								3%	3%	7%	4%	9%	4%
							grade 6 events	2313	2222	37793	2654	32126	7065
								1%	1%	22%	2%	22%	4%
							grade 7 events	103102	97921	74376	99875	70339	114932
								85%	85%	44%	84%	48%	76%

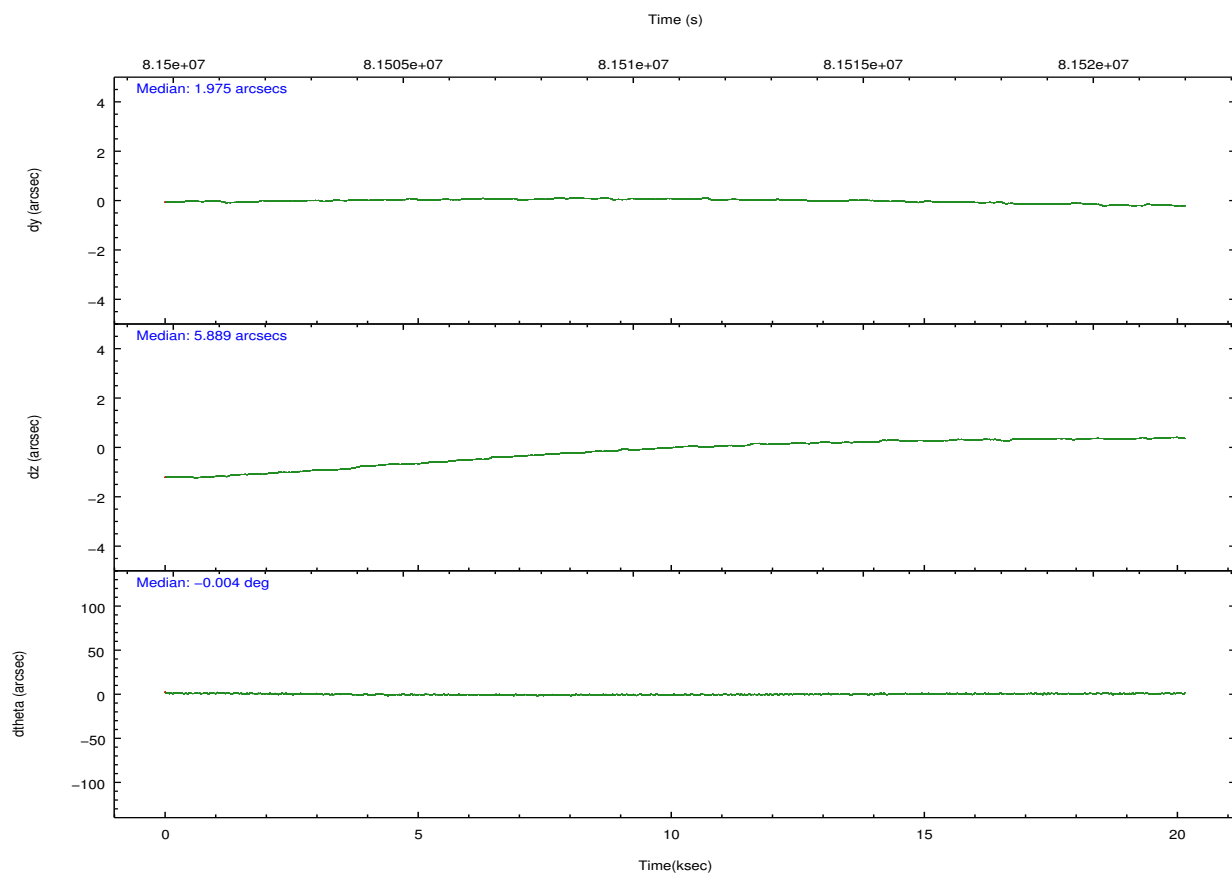
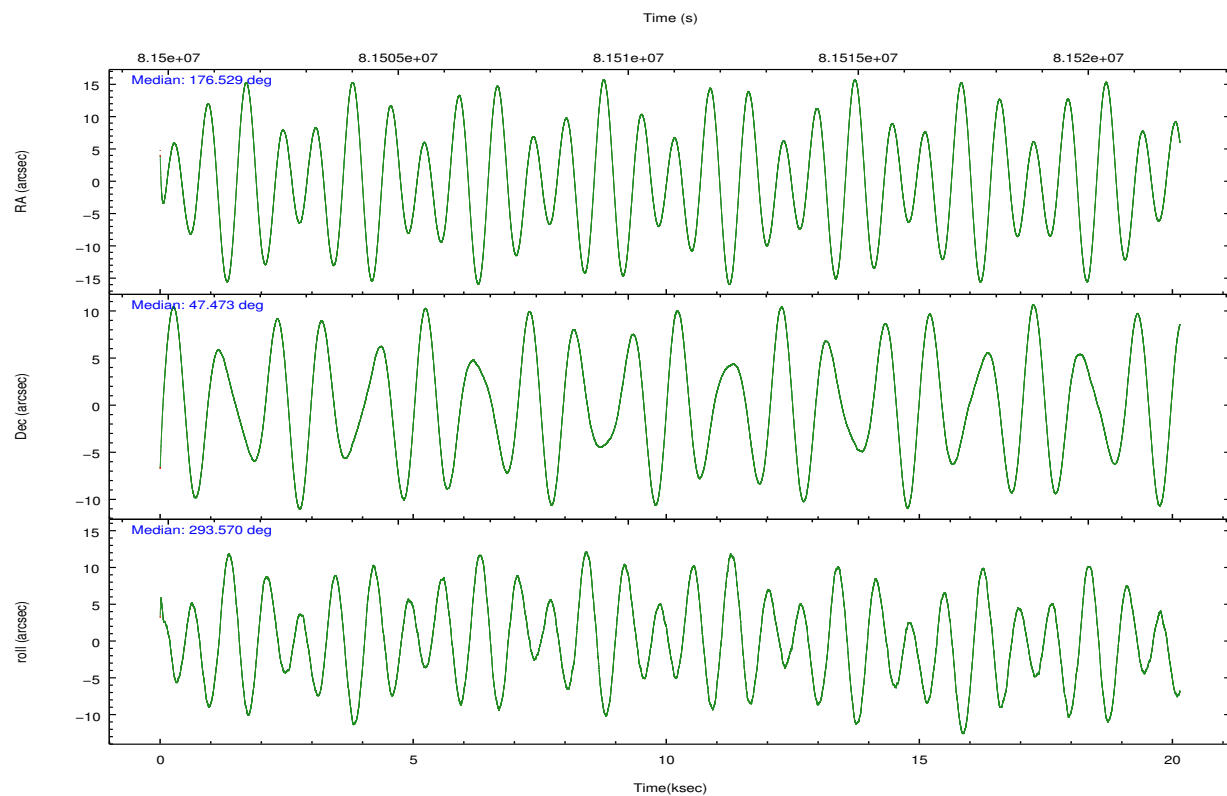
## 2.2 Compared Parameters

Parameter	Planned	Actual
Instrument	ACIS	ACIS
Detector	ACIS-235678	ACIS-235678
Grating	NONE	NONE
Data mode	FAINT	FAINT
Observation mode	POINTING	POINTING
[deg] Pointing RA	176.496048	176.5288065942273
[deg] Pointing Dec	47.488634	47.4725099962508
[deg] Pointing Roll	293.442768	293.5752568854682
[mm] SIM focus pos	-0.684267	-0.6828225247311905
[mm] SIM defocus	0	0.001444936568705701
[mm] SIM translation stage pos	-190.132523	-190.1425803651734
[mm] SIM translation stage offset	0	0.01005778216563158
[s] Observation start time (MET)	81500709.184000	81499871.452325
Observation start date	2000-08-01T07:04:05	2000-08-01T06:51:11
[s] Observation end time (MET)	81520980.184000	81521659.878135
Observation end date	2000-08-01T12:41:56	2000-08-01T12:54:19
Read mode	TIMED	TIMED

Parameter	Planned	Actual
Obspar format version number	7	7
Obspar file type	PREDICTED	ACTUAL
Obspar update status	NONE	UPDATED
Number of optional ACIS chips dropped	0	0
On-chip summing requested	N	N
Subarray requested	NONE	NONE
Alternating exposures requested	N	N
[s] Primary exposure time	0.000000	3.2

## 2.3 Aspect



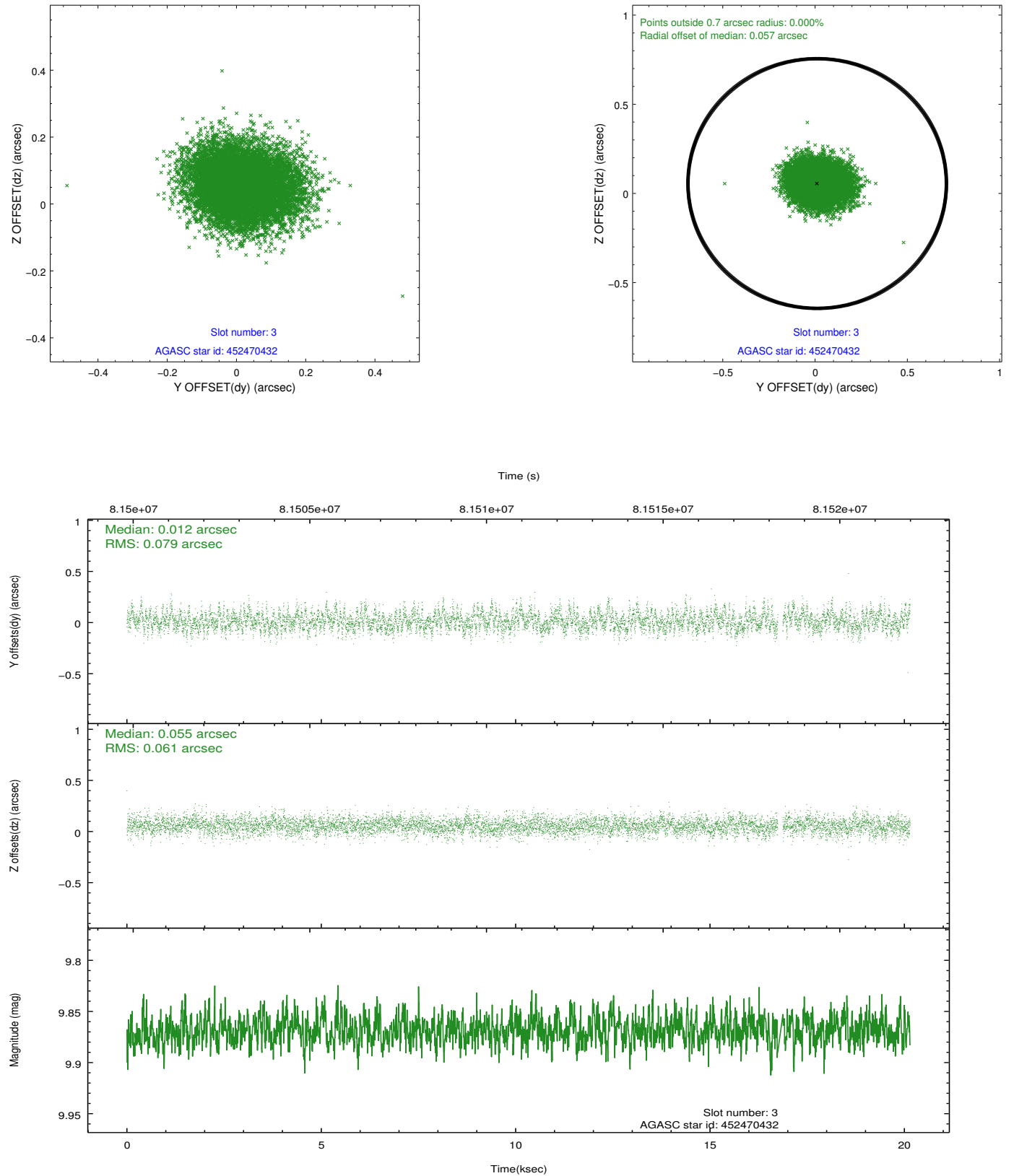


### Slot Statistics

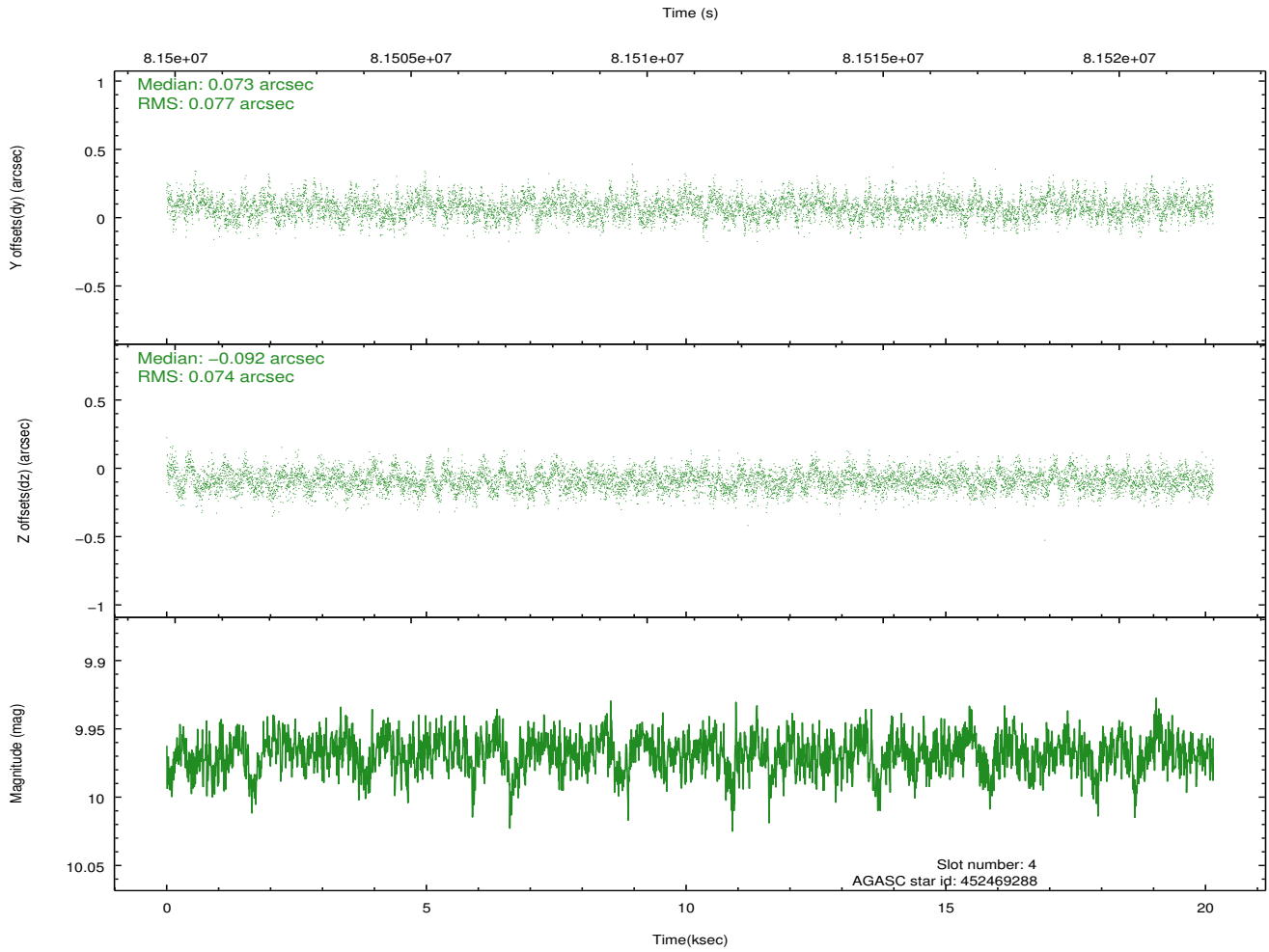
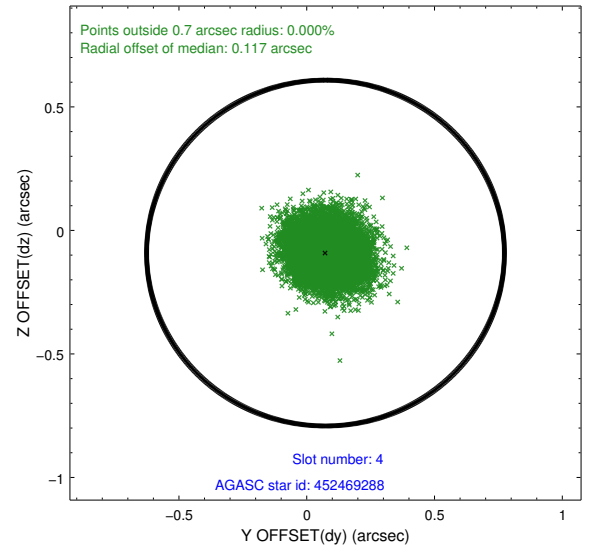
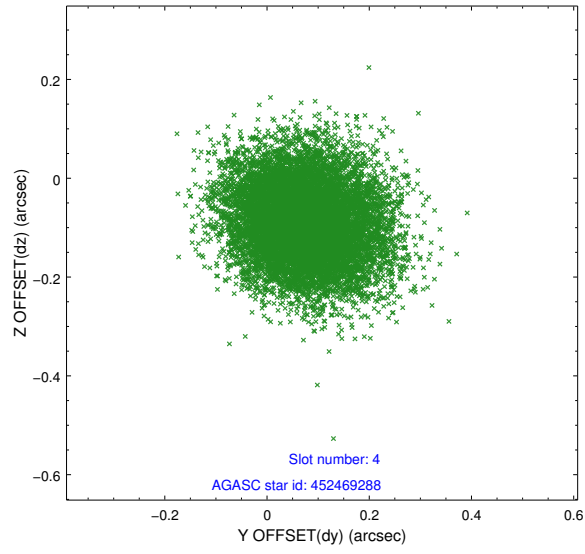
slot	status	id	mag	n_pts	med_dy	med_dz	dr1	dr2	ra	dec	mean_y	mean_z
0	FID	ACIS-S-2	7.11	4915	-0.036	0.003	0.009	0.015	0.000000	0.000000	-754.59	-1726.77
1	FID	ACIS-S-4	7.21	4915	-0.014	0.016	0.008	0.013	0.000000	0.000000	2158.61	181.55
2	FID	ACIS-S-5	7.23	4915	0.020	-0.011	0.010	0.020	0.000000	0.000000	-1807.16	175.38
3	GUIDE	452470432	9.87	9761	0.012	0.055	0.106	0.175	176.712094	47.890435	-1120.22	1053.69
4	GUIDE	452469288	9.97	9819	0.073	-0.092	0.115	0.184	176.480832	47.547282	-208.40	49.55
5	GUIDE	452471776	10.10	9817	-0.045	0.007	0.189	0.305	176.906039	48.172782	-1870.66	1883.43
6	GUIDE	452466128	10.21	9827	0.044	0.066	0.146	0.233	177.327482	47.076111	2163.33	1283.76
7	GUIDE	452474496	9.80	9820	-0.084	-0.042	0.109	0.174	175.552399	47.604662	-1306.86	-1930.14

## 2.4 Star Slots

### 2.4.1 Slot 3

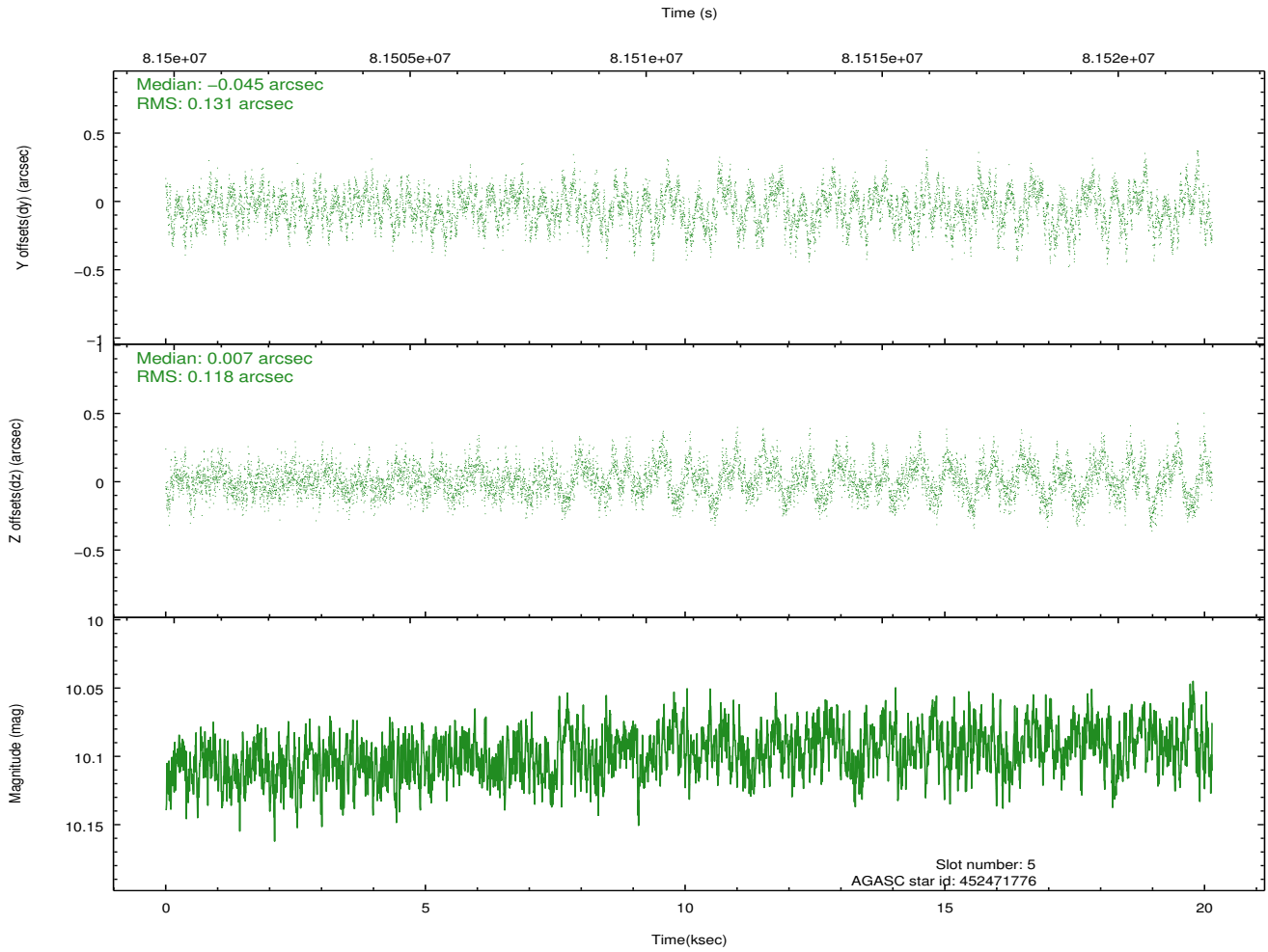
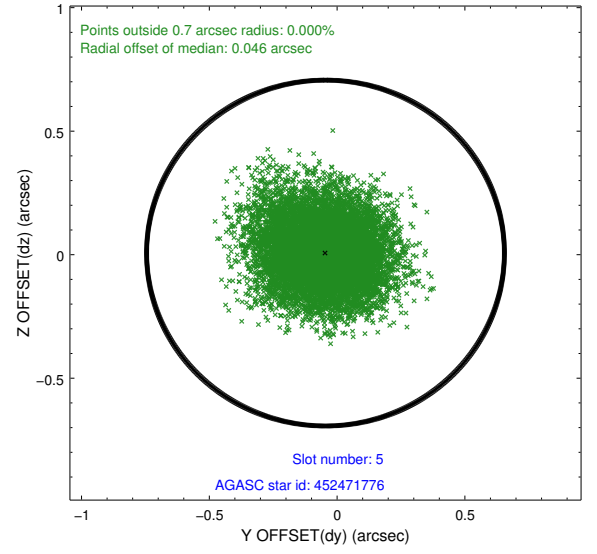
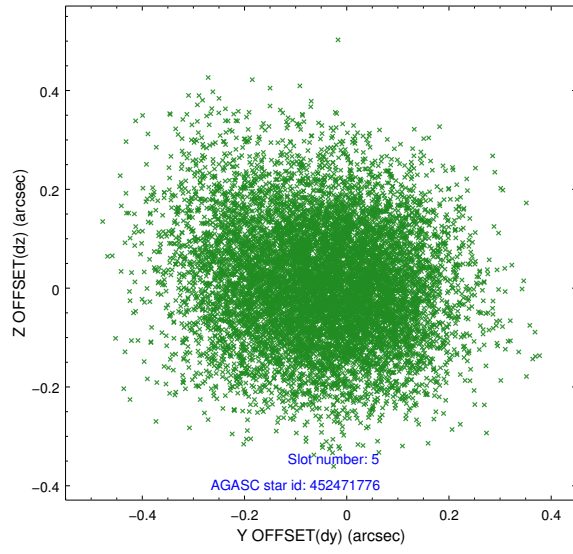


## 2.4.2 Slot 4

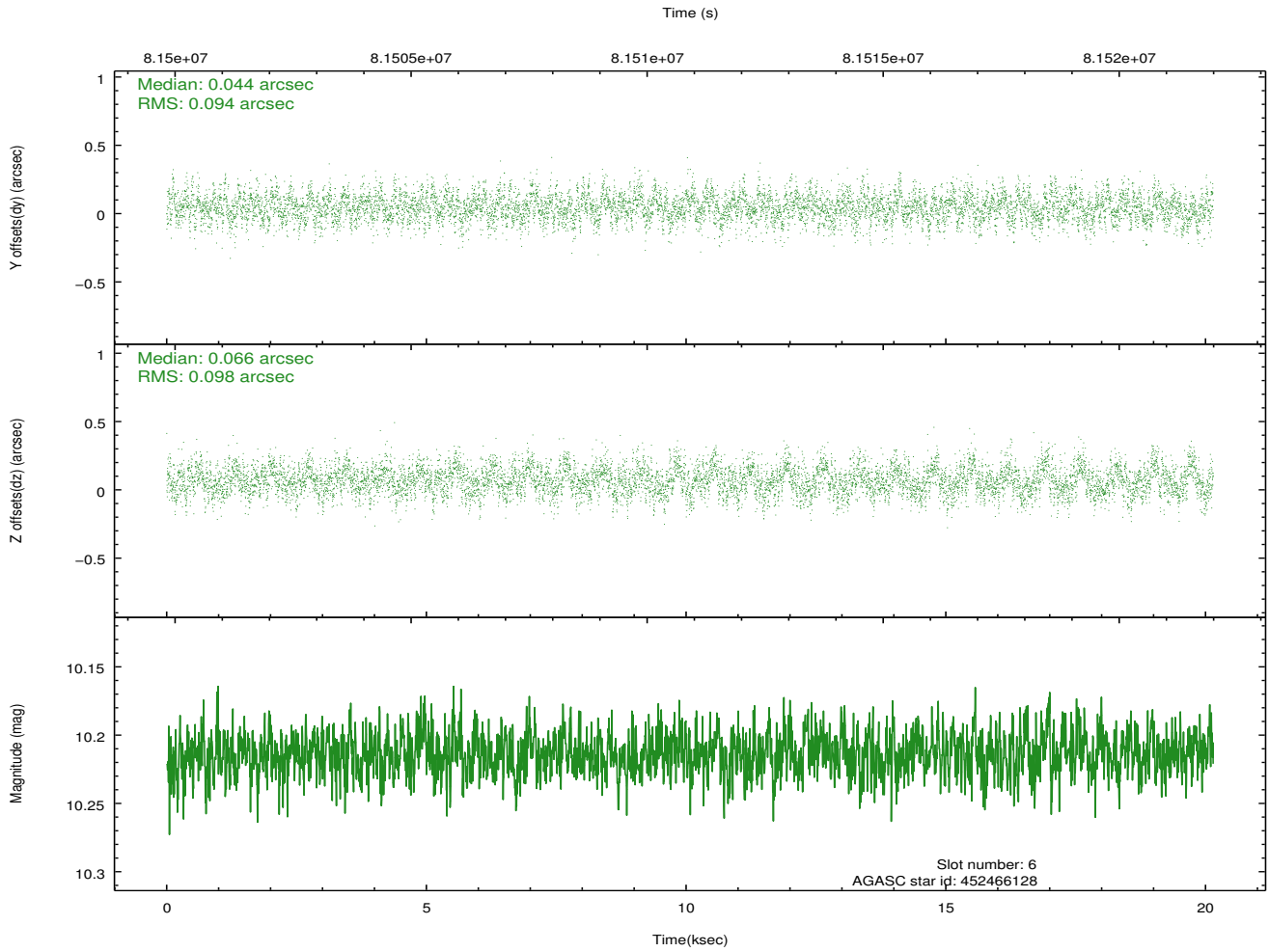
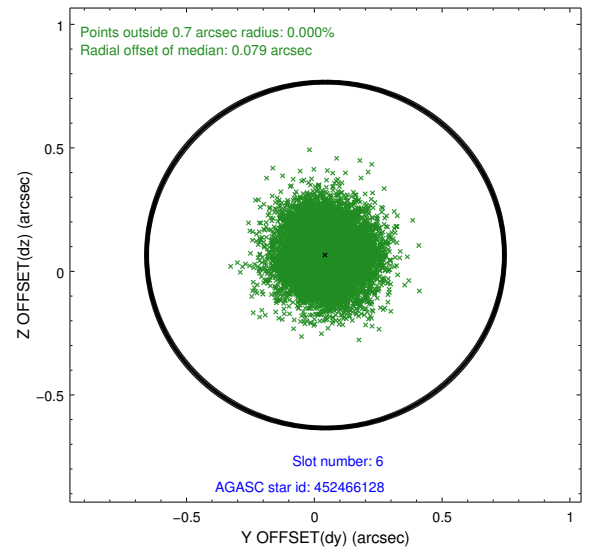
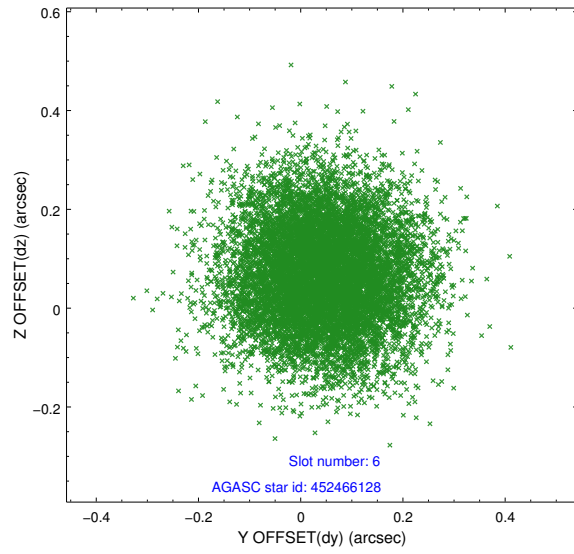




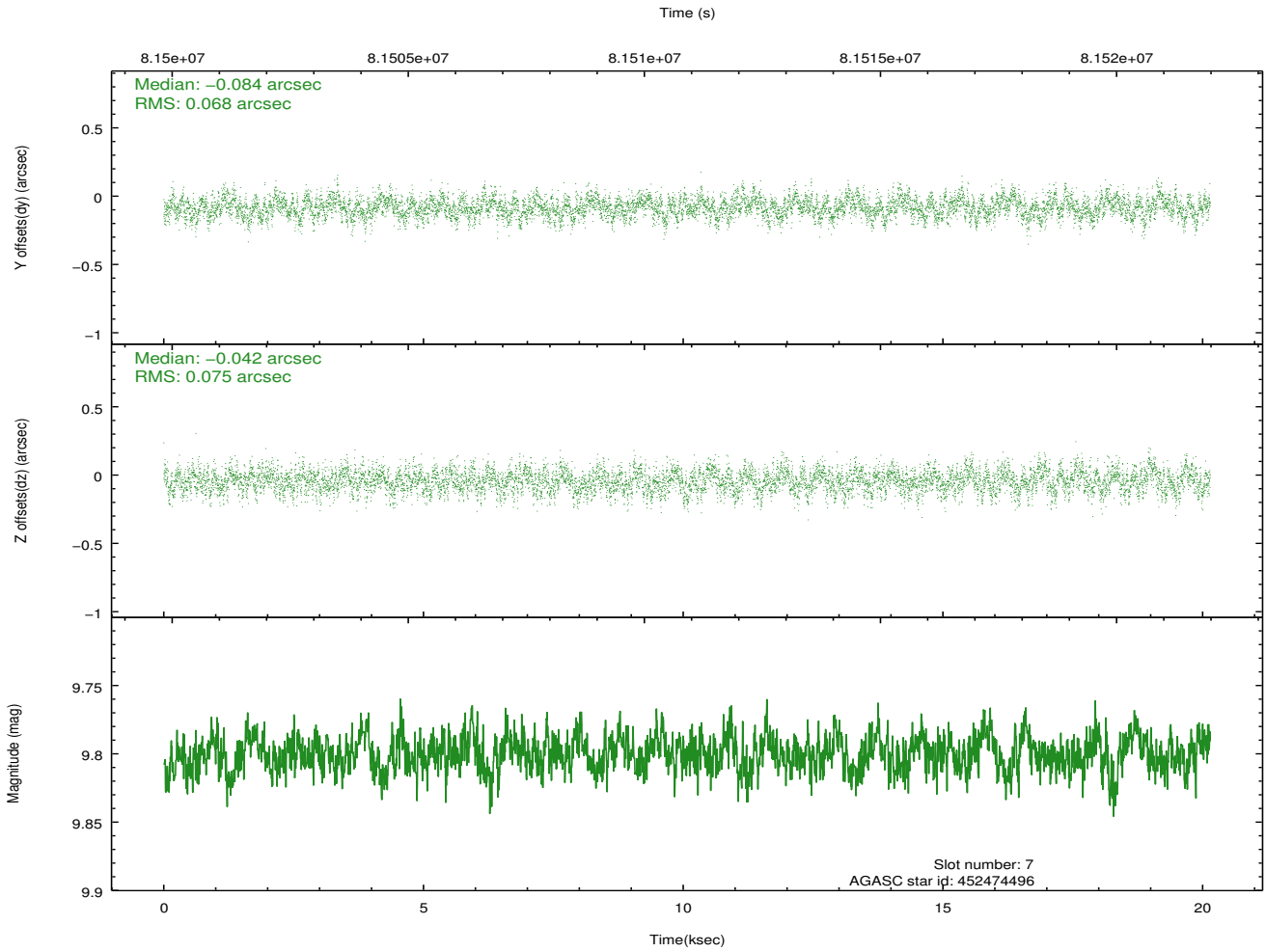
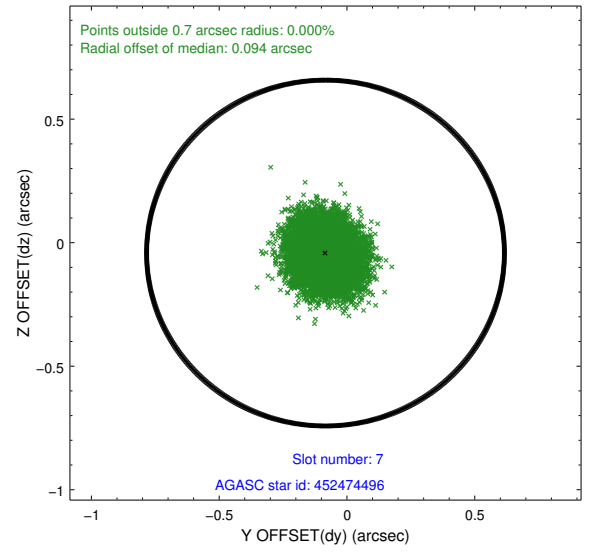
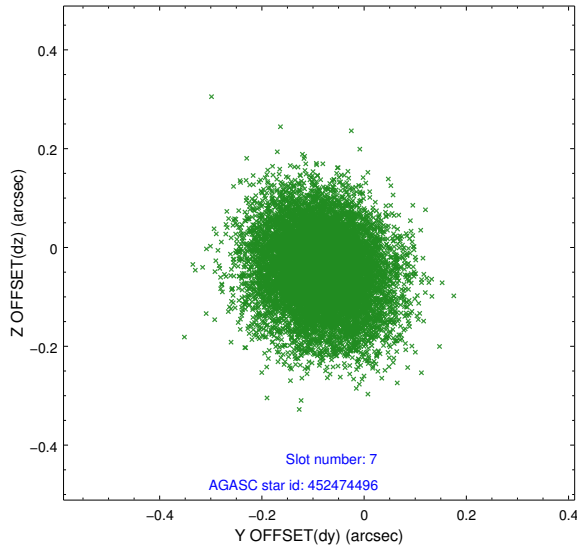
### 2.4.3 Slot 5



## 2.4.4 Slot 6

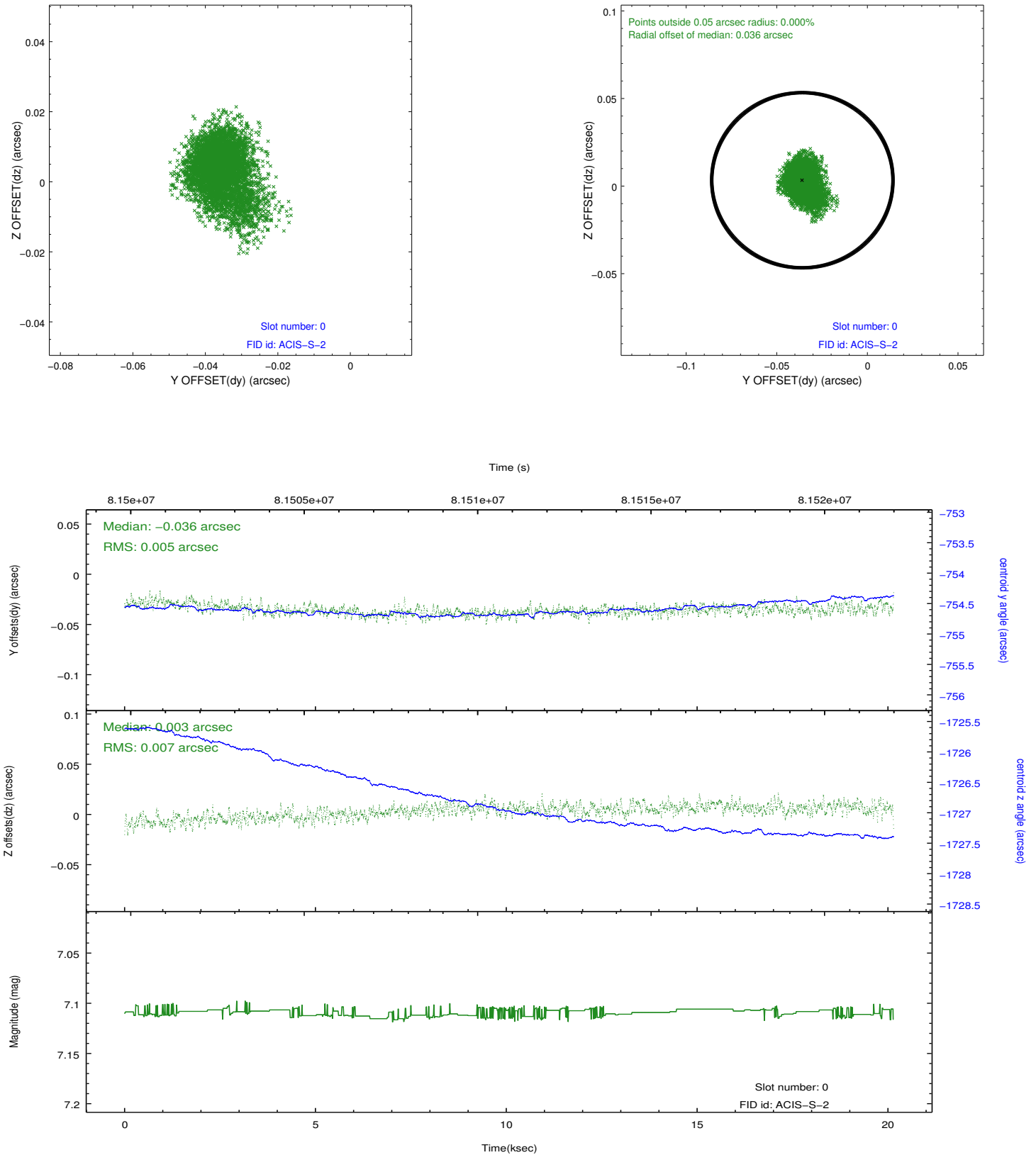


## 2.4.5 Slot 7

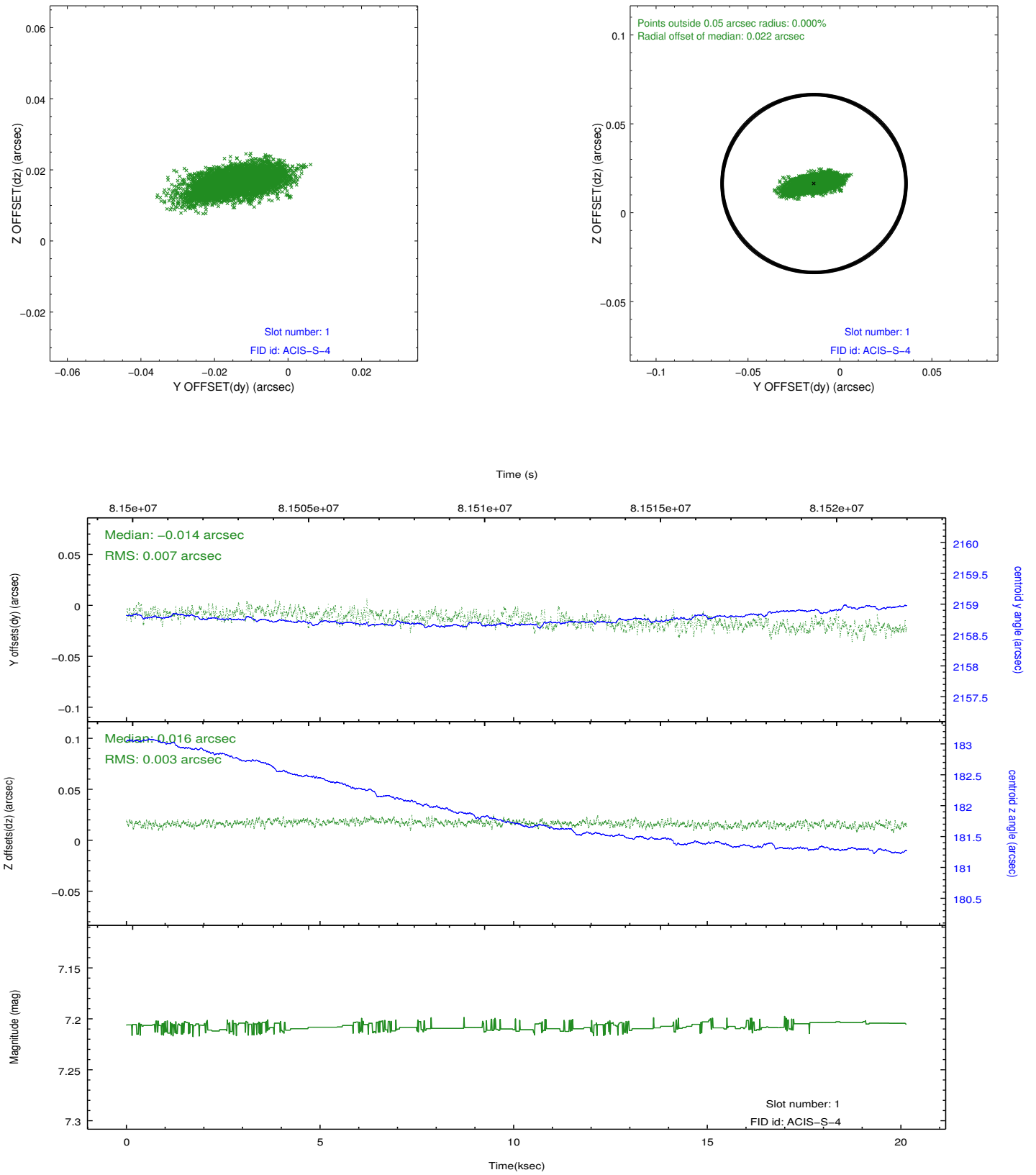


## 2.5 FID Slots

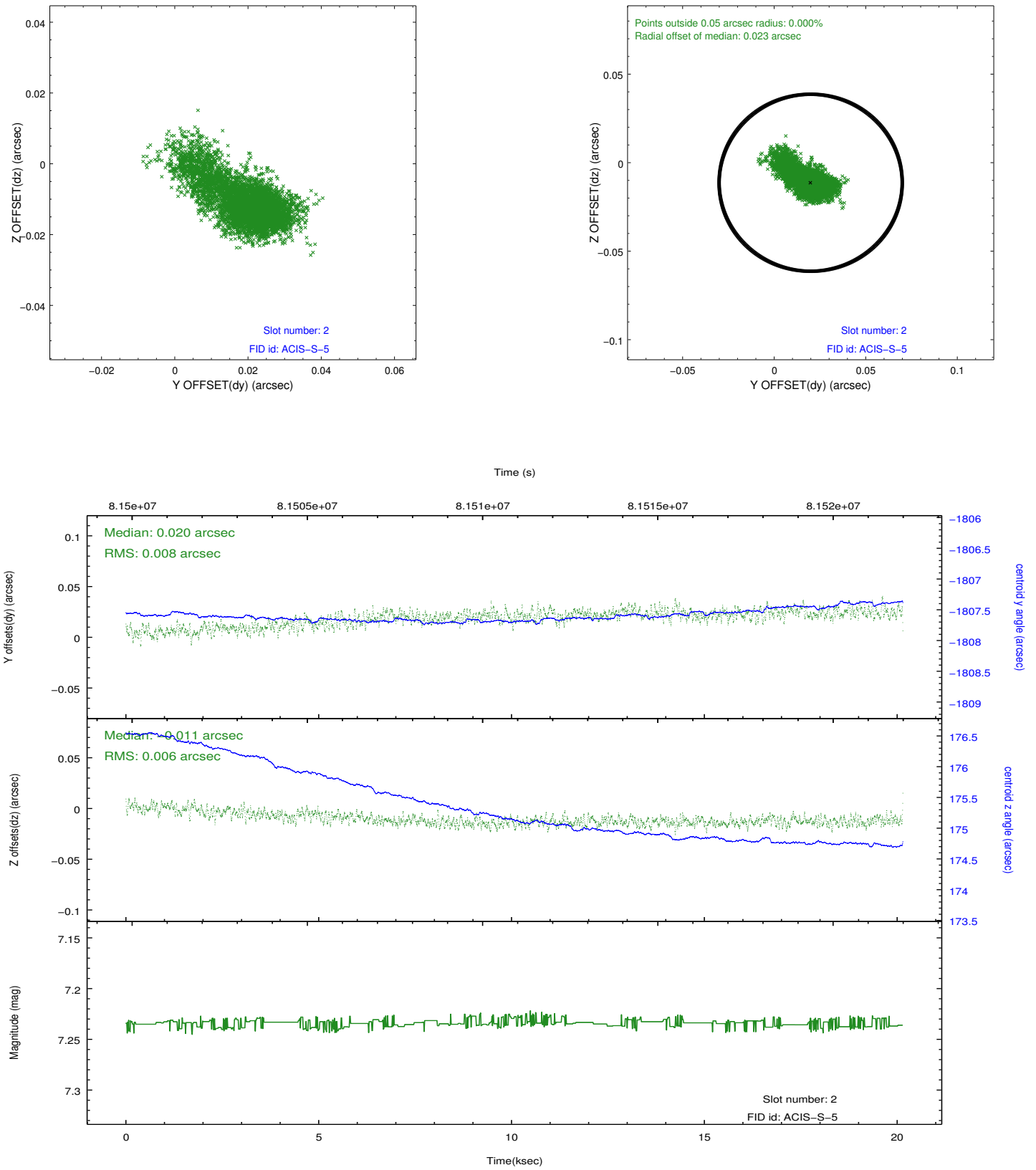
### 2.5.1 Slot 0



## 2.5.2 Slot 1



### 2.5.3 Slot 2



## A Summary

### A.1 Status

V&V Scientist	Jen Lauer
V&V Date (YYYY-MM-DD)	2012.09.06
V&V Edition	1
V&V Disposition and Status	OK
V&V Charge Time	20.025

### A.2 Comments