

# V&V Reference Report

## L2 ASCDS Version : 7.6.10

Observation 952 - L2 Version 001  
Chandra X-Ray Center

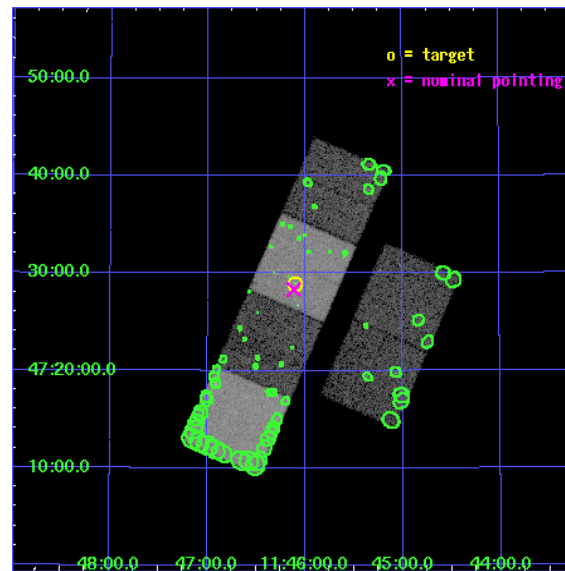
L2 Processing Date : Jun 1 2007

## Contents

<b>1</b>	<b>Front</b>	<b>2</b>
<b>2</b>	<b>OBI</b>	<b>3</b>
2.1	OBI . . . . .	3
2.1.1	Images . . . . .	3
2.1.2	Bias . . . . .	3
2.1.3	Parameters . . . . .	4
2.1.4	Events . . . . .	4
2.2	Compared Parameters . . . . .	5
2.3	Aspect . . . . .	6
2.4	Star Slots . . . . .	9
2.4.1	Slot 3 . . . . .	9
2.4.2	Slot 4 . . . . .	10
2.4.3	Slot 5 . . . . .	11
2.4.4	Slot 6 . . . . .	12
2.4.5	Slot 7 . . . . .	13
2.5	FID Slots . . . . .	14
2.5.1	Slot 0 . . . . .	14
2.5.2	Slot 1 . . . . .	15
2.5.3	Slot 2 . . . . .	16
<b>3</b>	<b>Point Sources</b>	<b>17</b>
<b>A</b>	<b>Summary</b>	<b>18</b>
A.1	Status . . . . .	18
A.2	Comments . . . . .	18

# 1 Front

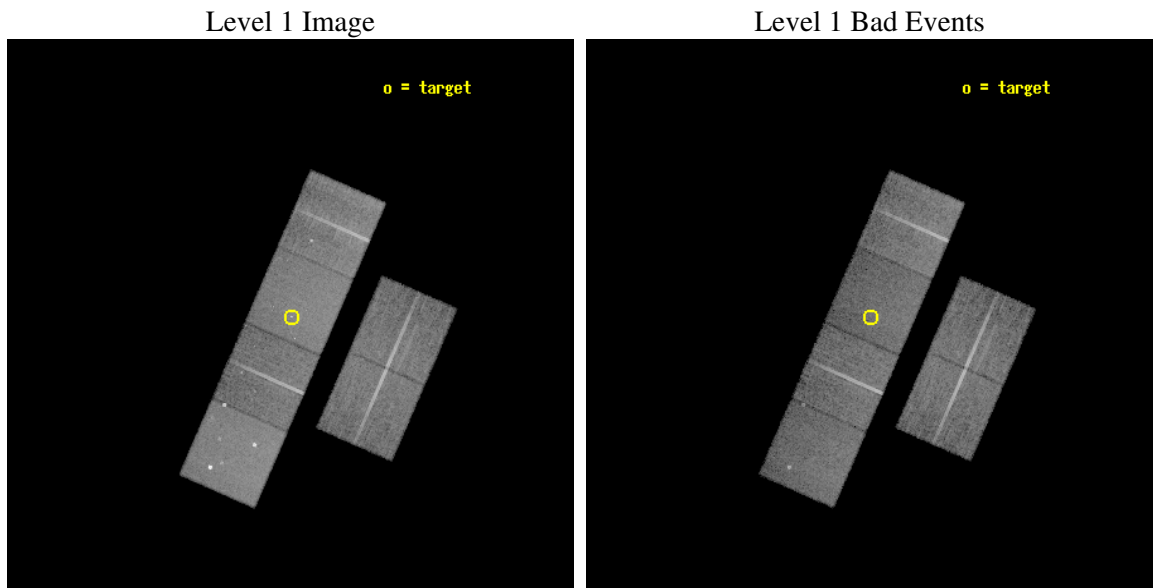
seq_num	500079
obs_id	952
title	PROMPT AXAF OBSERVATIONS OF NEARBY SUPERNOVAE
observer	Prof. Walter Lewin
object	SN1998S
dtcycle	0
cycle	P
ra_targ	176.52546
dec_targ	47.482167
ra_nom	176.52880659423
dec_nom	47.472509996251
roll_nom	293.57525688547
revision	3
ontime	20025.60001865
livetime	19772.023813245
ontime2	20025.60001865
ontime3	20025.60001865
ontime5	20025.60001865
ontime6	20022.359038487
ontime7	20025.60001865
ontime8	20022.35918802
l2events	176992



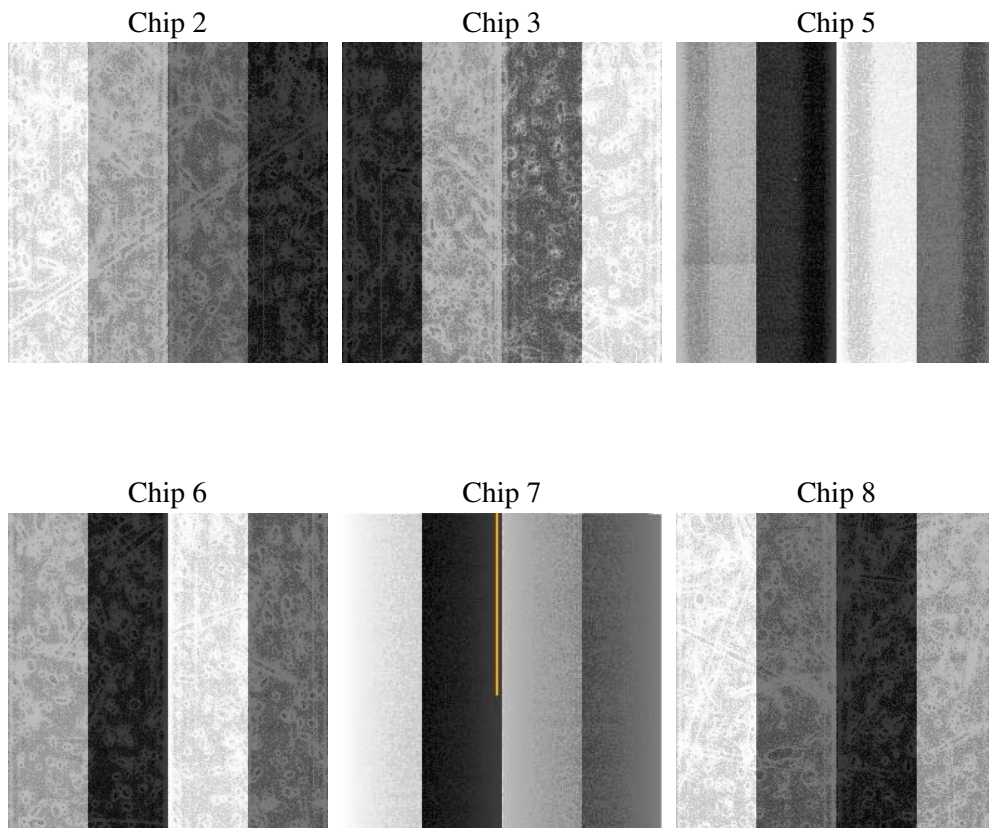
## 2 OBI

### 2.1 OBI

#### 2.1.1 Images



#### 2.1.2 Bias



### 2.1.3 Parameters

obi_num	0
ascdsver	7.6.10
caldsver	3.4.0
date	2007-06-01T04:29:52
revision	3

sched_exp_time	20271.565000
ontime	20025.60001865
ontime2	20025.60001865
ontime3	20025.60001865
ontime5	20025.60001865
ontime6	20022.359038487
ontime7	20025.60001865
ontime8	20022.35918802
l1events	816122

### 2.1.4 Events

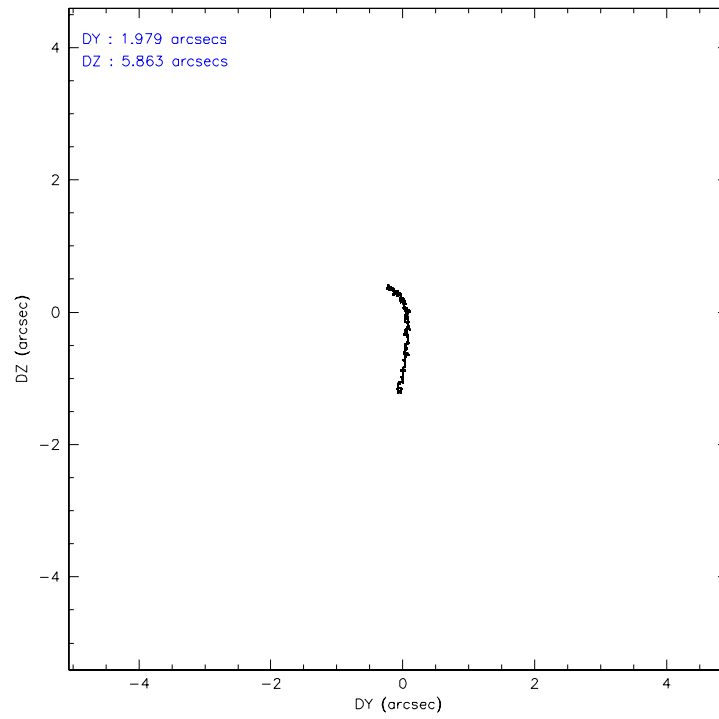
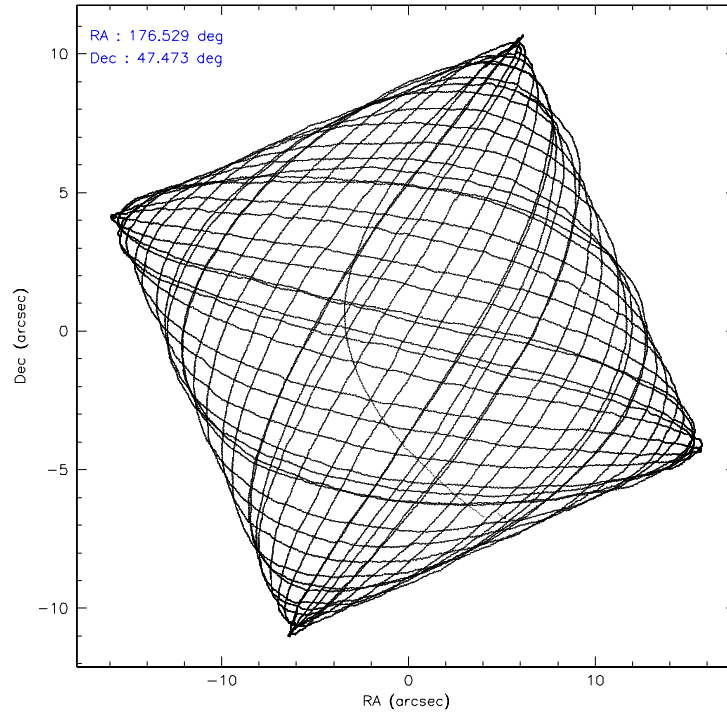
	ccd 2	ccd 3	ccd 5	ccd 6	ccd 7	ccd 8
level 1 events	119957	114985	167067	118735	145997	149381
rejected events	107025	102135	87576	104729	84250	121094
rejected %	89%	88%	52%	88%	57%	81%

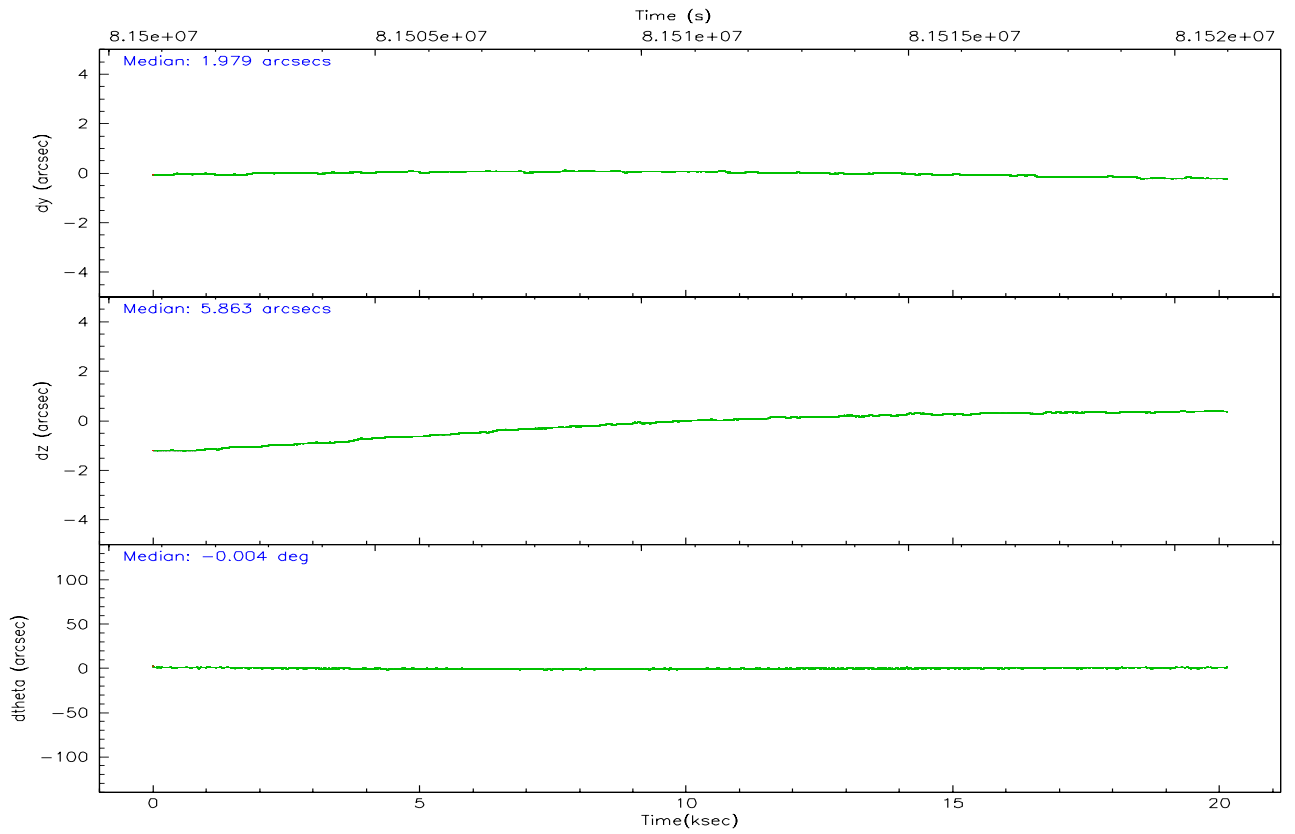
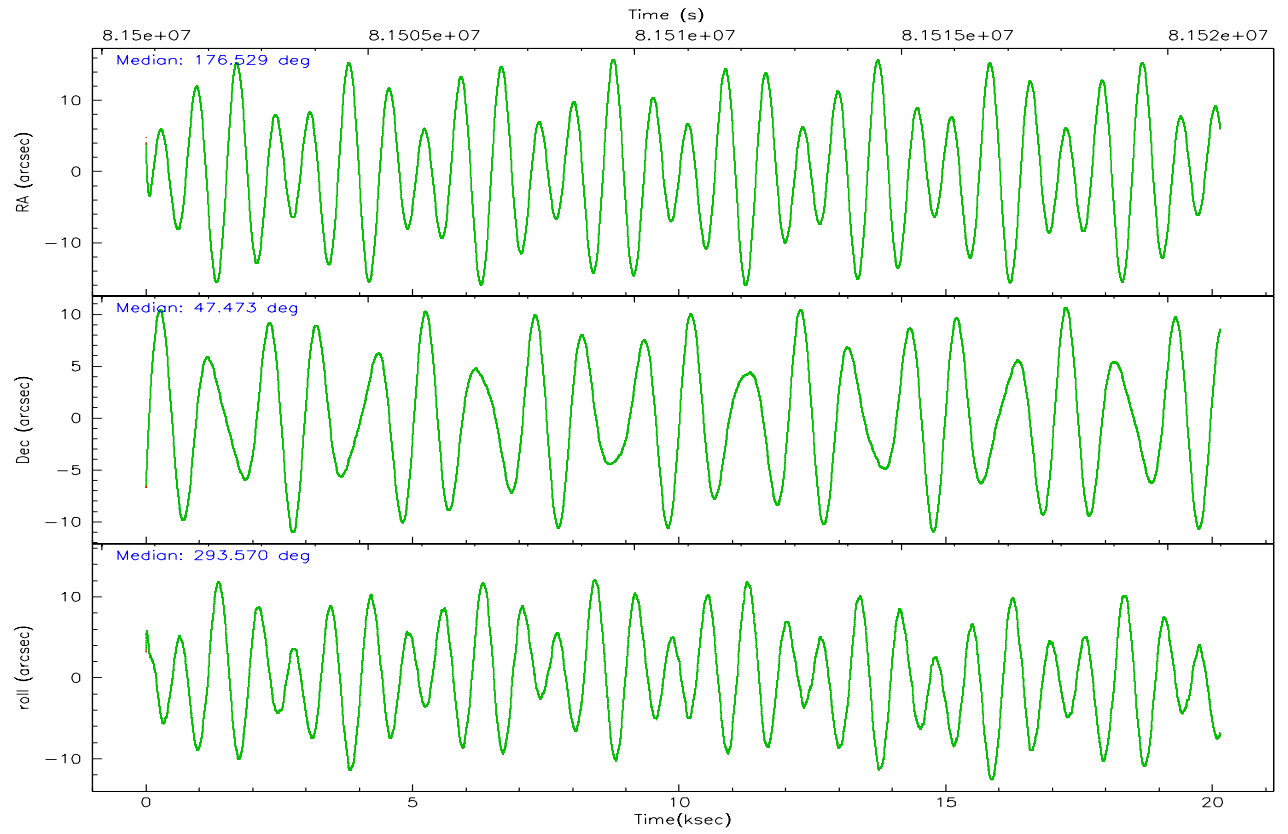
	ccd 2	ccd 3	ccd 5	ccd 6	ccd 7	ccd 8
grade 0 events	5357	5537	12465	5991	6253	9478
	4%	4%	7%	5%	4%	6%
grade 1 events	53	51	1031	57	140	87
	0%	0%	0%	0%	0%	0%
grade 2 events	2776	2570	22727	2647	12200	5873
	2%	2%	13%	2%	8%	3%
grade 3 events	1280	1308	3387	1353	5614	3095
	1%	1%	2%	1%	3%	2%
grade 4 events	1207	1218	3133	1363	5566	2829
	1%	1%	1%	1%	3%	1%
grade 5 events	3870	4158	12146	4796	13757	6025
	3%	3%	7%	4%	9%	4%
grade 6 events	2313	2222	37794	2653	32124	7063
	1%	1%	22%	2%	22%	4%
grade 7 events	103101	97921	74384	99875	70343	114931
	85%	85%	44%	84%	48%	76%

## 2.2 Compared Parameters

Parameter	Planned	Actual	Parameter	Planned	Actual
Instrument	ACIS	ACIS	Obspar format version number	6	6
Detector	ACIS-235678	ACIS-235678	Obspar file type	PREDICTED	ACTUAL
Grating	NONE	NONE	Obspar update status	NONE	UPDATED
Data mode	FAINT	FAINT	Number of optional ACIS chips dropped	0	0
Observation mode	POINTING	POINTING	On-chip summing requested	N	N
Pointing RA	176.496048	176.5288065942275	Subarray requested	NONE	NONE
Pointing Dec	47.488634	47.472509996251	Alternating exposures requested	N	N
Pointing Roll	293.442768	293.5752568854681	Primary exposure time	3.200000	3.2
SIM focus pos (mm)	-0.684267	-0.6828225247311905			
SIM defocus (mm)	0	0.001444936568705701			
SIM translation stage pos (mm)	-190.132523	-190.1425803651734			
SIM translation stage offset (mm)	0	0.01005778216563158			
Observation start time	81500709.184000	81499871.452325			
Observation start date	2000-08-01T07:04:05	2000-08-01T06:51:11			
Observation end time	81520980.184000	81521659.878135			
Observation end date	2000-08-01T12:41:56	2000-08-01T12:54:19			
Read mode	TIMED	TIMED			

## 2.3 Aspect





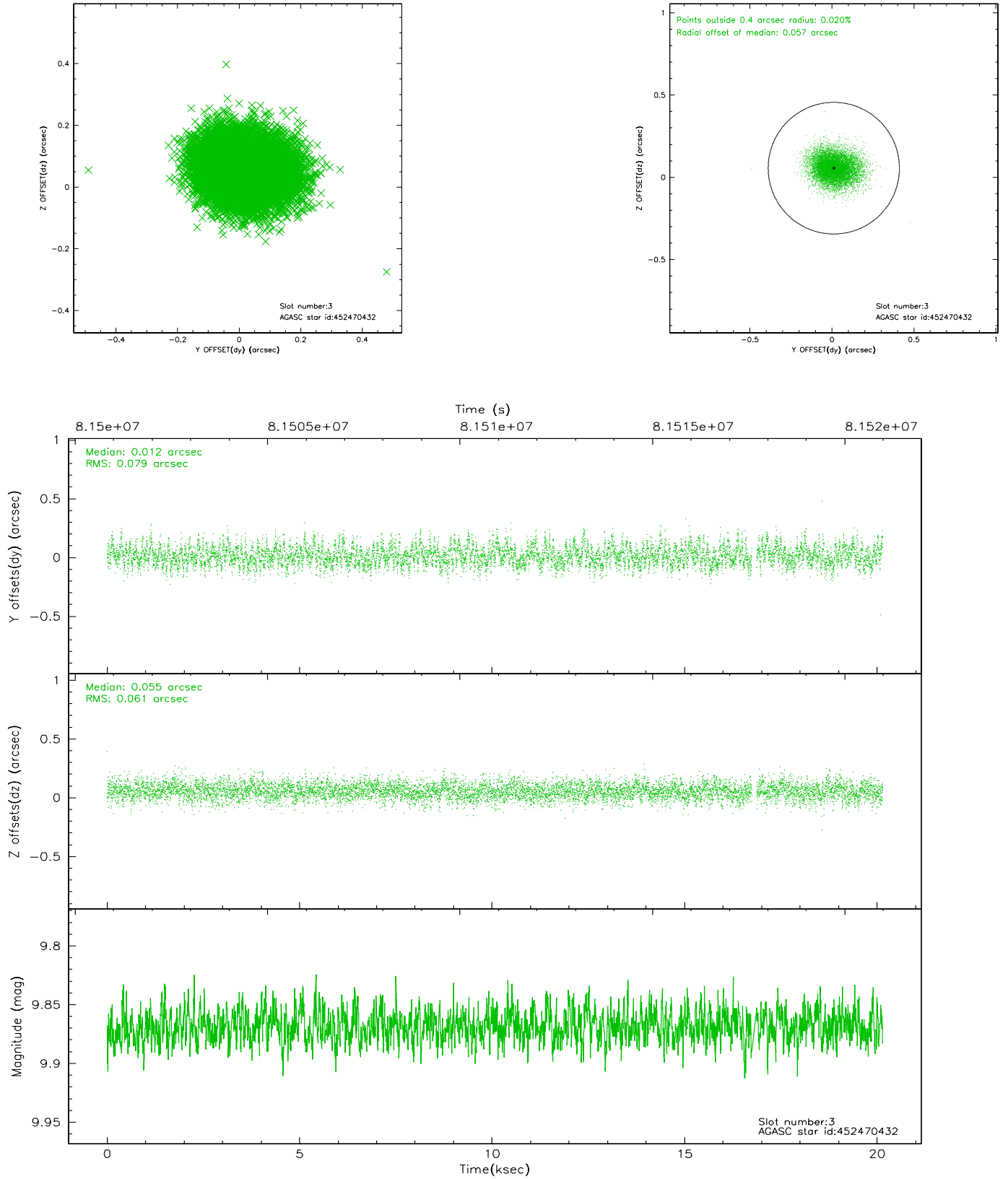
### Slot Statistics

slot	status	id	mag	n_pts	med_dy	med_dz	dr1	dr2	ra	dec	mean_y	mean_z
0	FID	ACIS-S-2	7.11	4915	-0.024	0.027	0.009	0.015	0.000000	0.000000	-754.58	-1726.73
1	FID	ACIS-S-4	7.21	4915	-0.056	0.005	0.008	0.014	0.000000	0.000000	2158.57	181.56
2	FID	ACIS-S-5	7.23	4915	0.050	-0.023	0.010	0.020	0.000000	0.000000	-1807.12	175.39
3	GUIDE	452470432	9.87	9761	0.012	0.055	0.106	0.175	176.712094	47.890435	-1120.22	1053.69
4	GUIDE	452469288	9.97	9819	0.073	-0.092	0.115	0.184	176.480832	47.547282	-208.40	49.55
5	GUIDE	452471776	10.10	9817	-0.045	0.007	0.189	0.305	176.906039	48.172782	-1870.66	1883.43
6	GUIDE	452466128	10.21	9827	0.044	0.066	0.146	0.233	177.327482	47.076111	2163.33	1283.76
7	GUIDE	452474496	9.80	9820	-0.084	-0.042	0.109	0.174	175.552399	47.604662	-1306.86	-1930.14

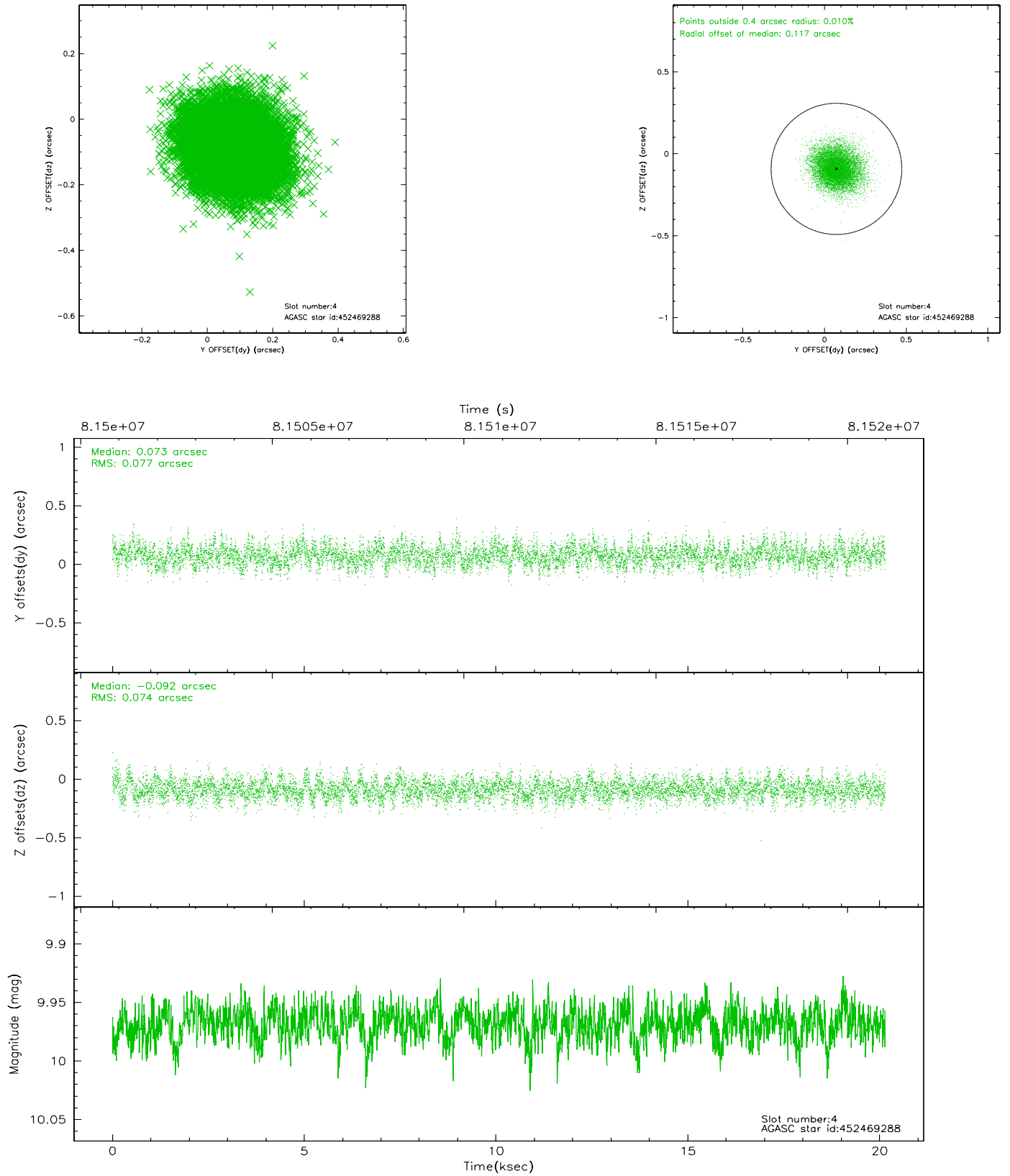


## 2.4 Star Slots

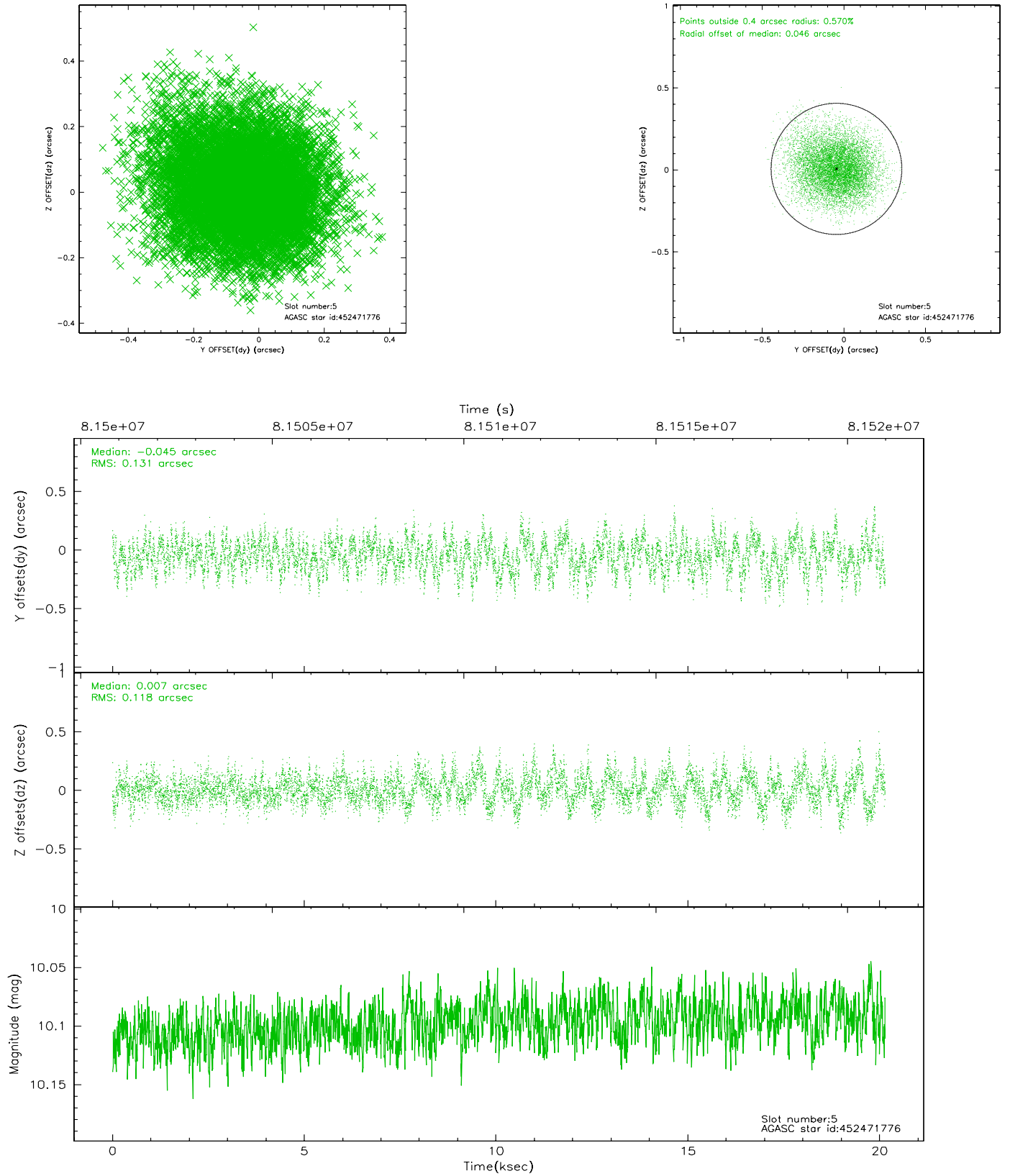
### 2.4.1 Slot 3



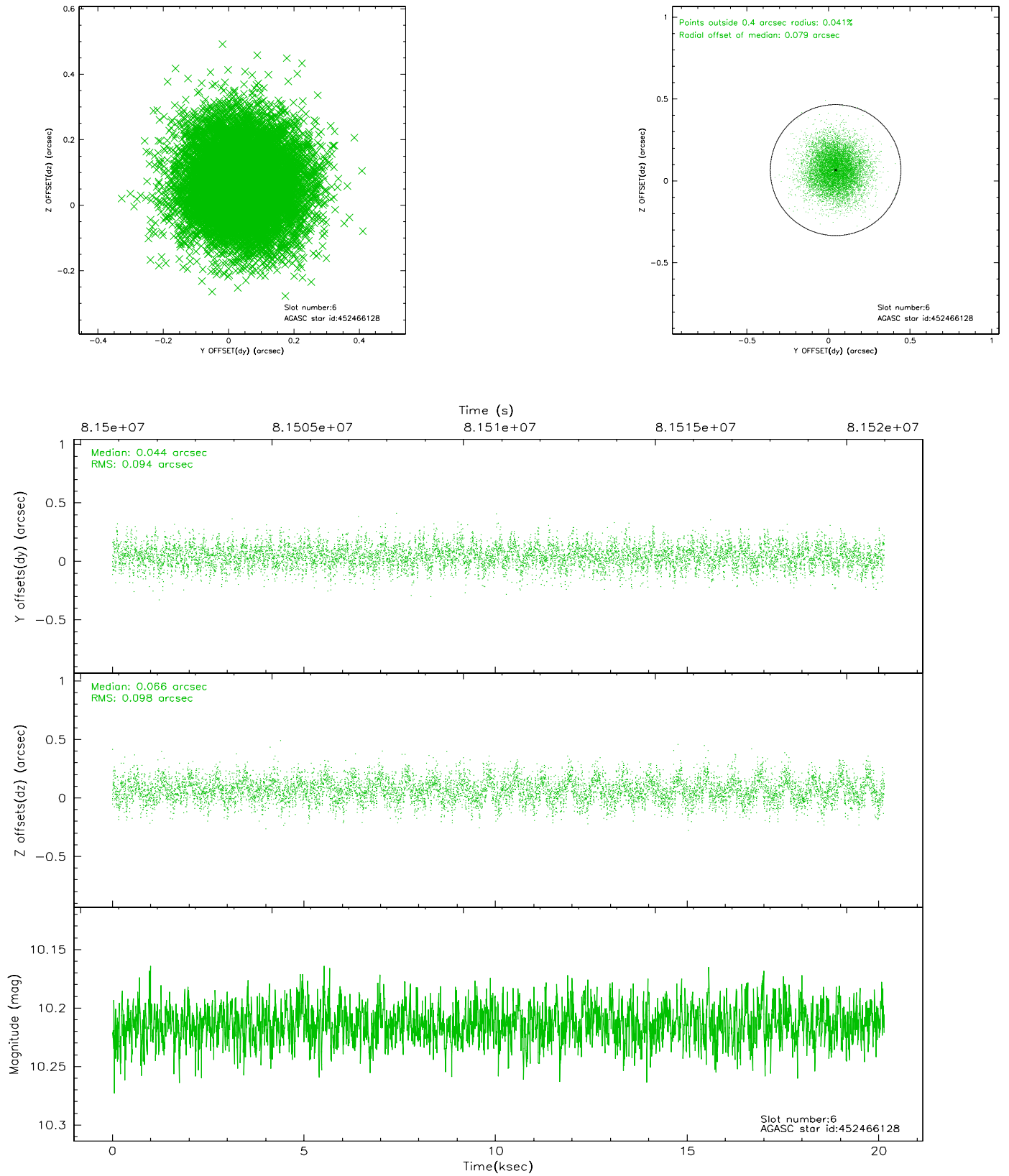
## 2.4.2 Slot 4



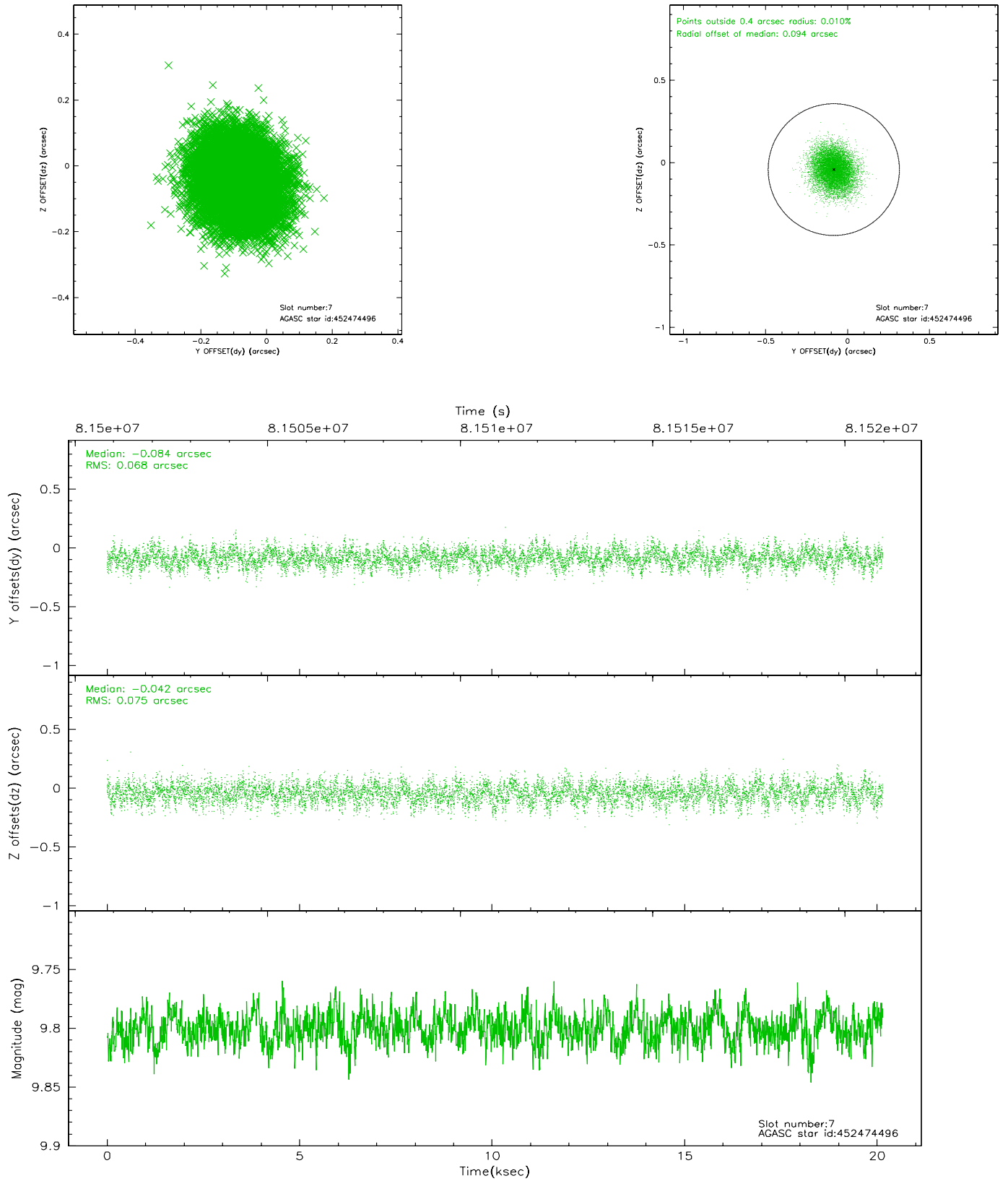
### 2.4.3 Slot 5



## 2.4.4 Slot 6

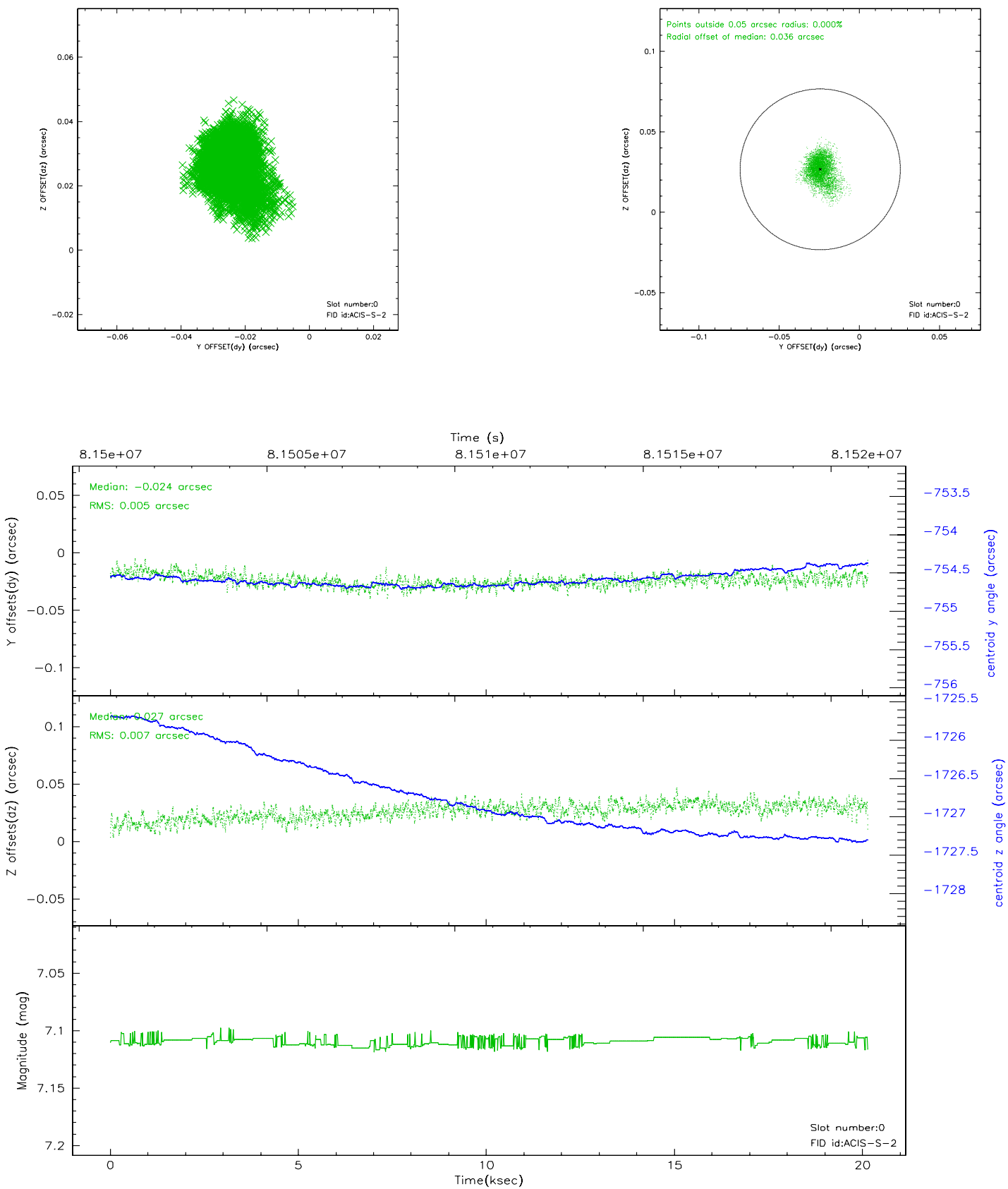


## 2.4.5 Slot 7

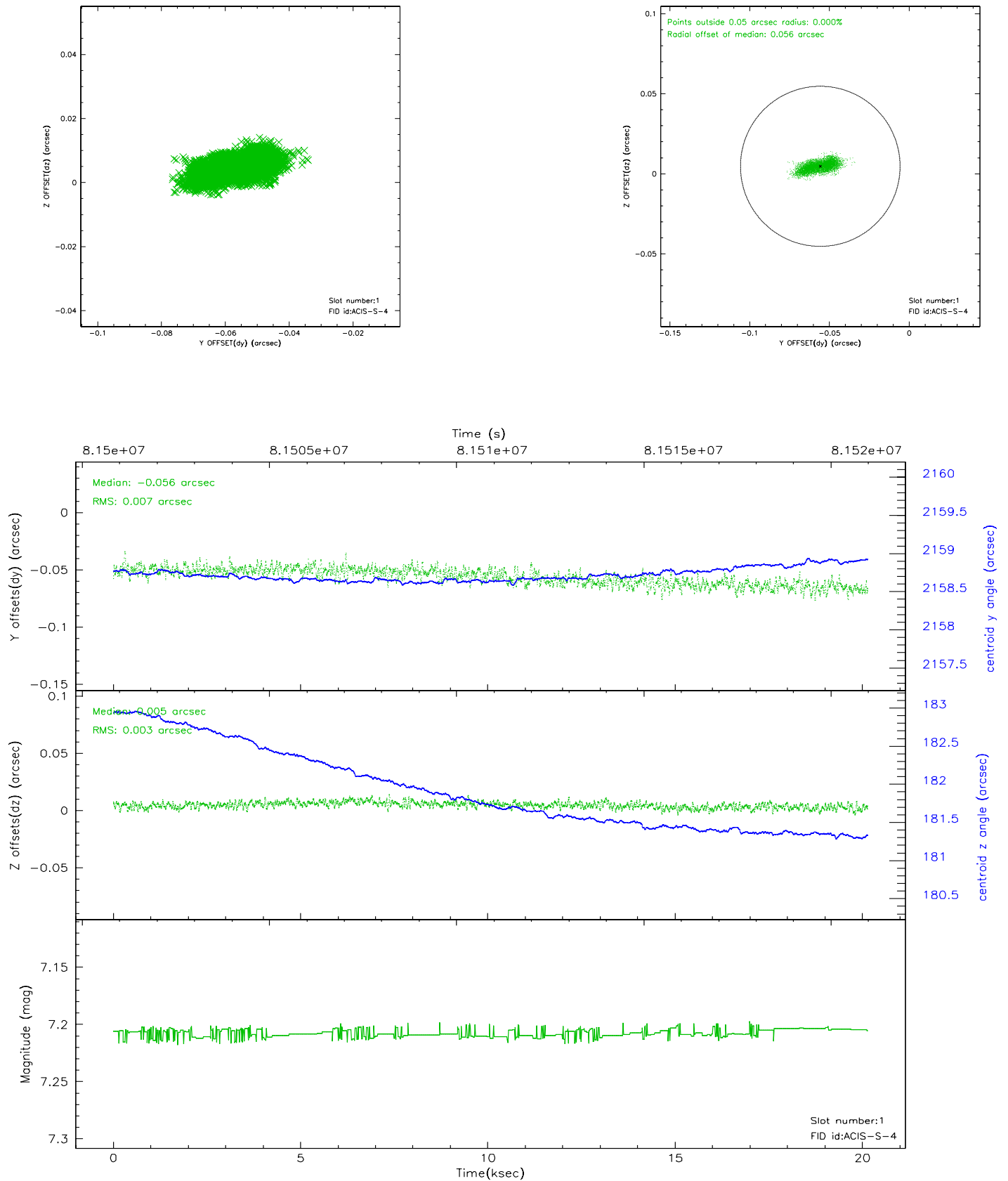


## 2.5 FID Slots

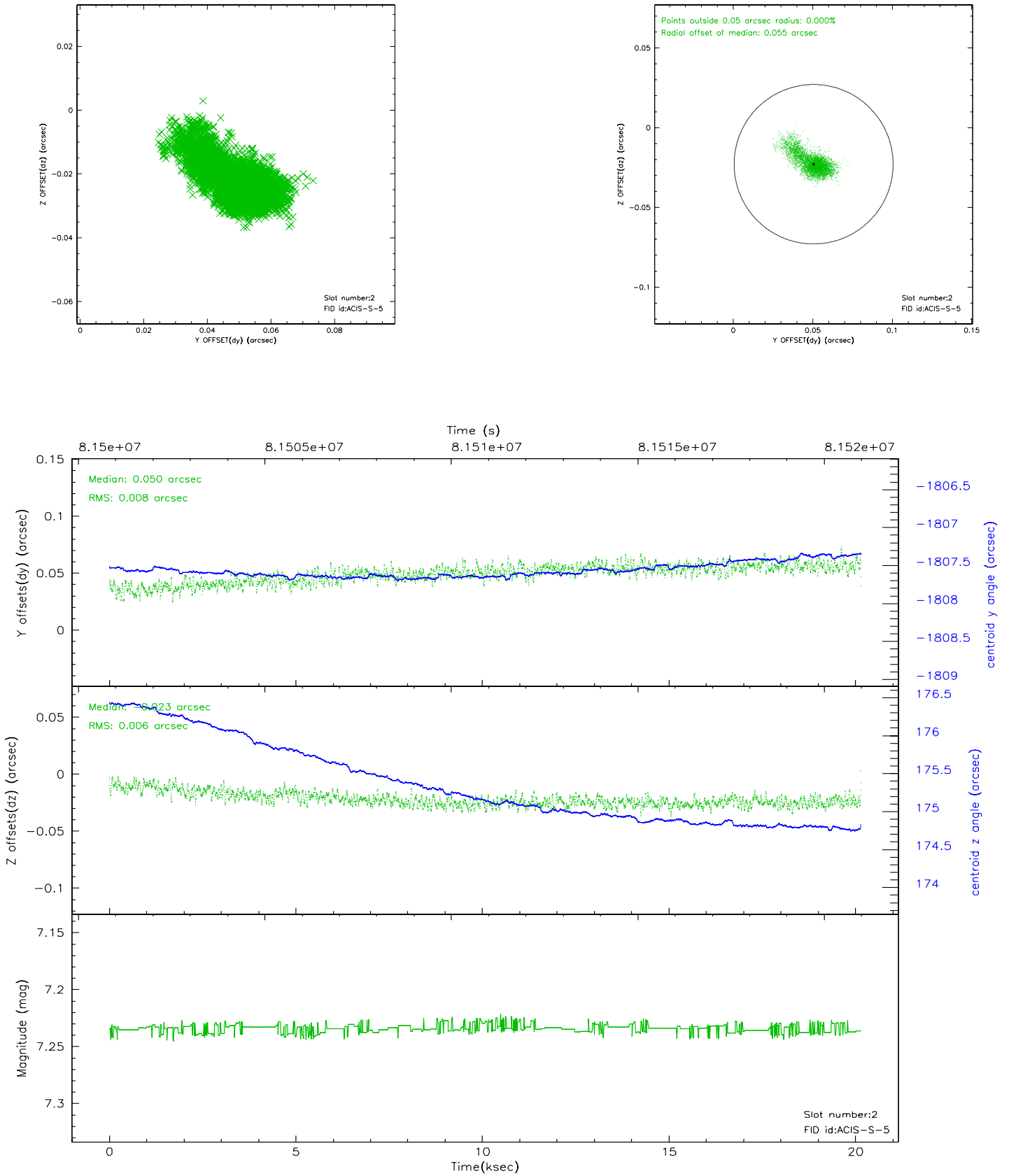
### 2.5.1 Slot 0



## 2.5.2 Slot 1

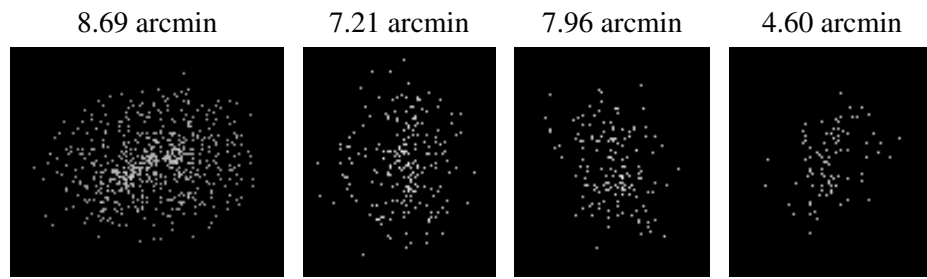


### 2.5.3 Slot 2





### 3 Point Sources



## A Summary

### A.1 Status

V&V Scientist	Beth Sundheim
V&V Date (YYYY-MM-DD)	2007.06.04
V&V Edition	1
V&V Disposition and Status	OK
V&V Charge Time	20.025

### A.2 Comments