

# V&V Reference Report

## L2 ASCDS Version : 7.6.10

Observation 780 - L2 Version 001  
Chandra X-Ray Center

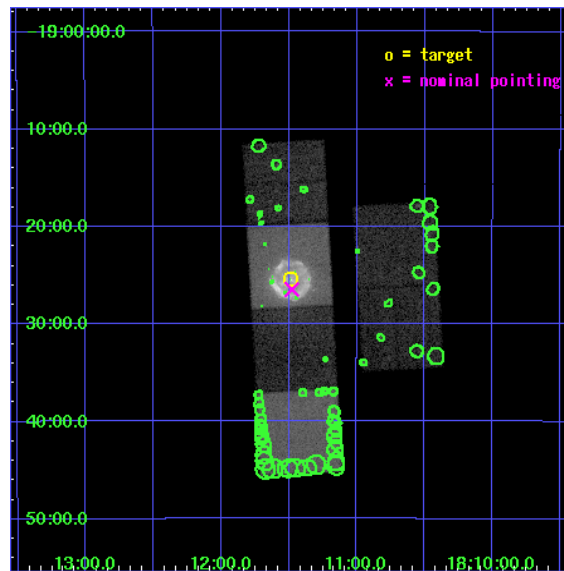
L2 Processing Date : Jun 2 2007

## Contents

<b>1</b>	<b>Front</b>	<b>2</b>
<b>2</b>	<b>OBI</b>	<b>3</b>
2.1	OBI . . . . .	3
2.1.1	Images . . . . .	3
2.1.2	Bias . . . . .	3
2.1.3	Parameters . . . . .	4
2.1.4	Events . . . . .	4
2.2	Compared Parameters . . . . .	5
2.3	Aspect . . . . .	6
2.4	Star Slots . . . . .	9
2.4.1	Slot 3 . . . . .	9
2.4.2	Slot 4 . . . . .	10
2.4.3	Slot 5 . . . . .	11
2.4.4	Slot 6 . . . . .	12
2.4.5	Slot 7 . . . . .	13
2.5	FID Slots . . . . .	14
2.5.1	Slot 0 . . . . .	14
2.5.2	Slot 1 . . . . .	15
2.5.3	Slot 2 . . . . .	16
<b>3</b>	<b>Point Sources</b>	<b>17</b>
<b>A</b>	<b>Summary</b>	<b>18</b>
A.1	Status . . . . .	18
A.2	Comments . . . . .	18

# 1 Front

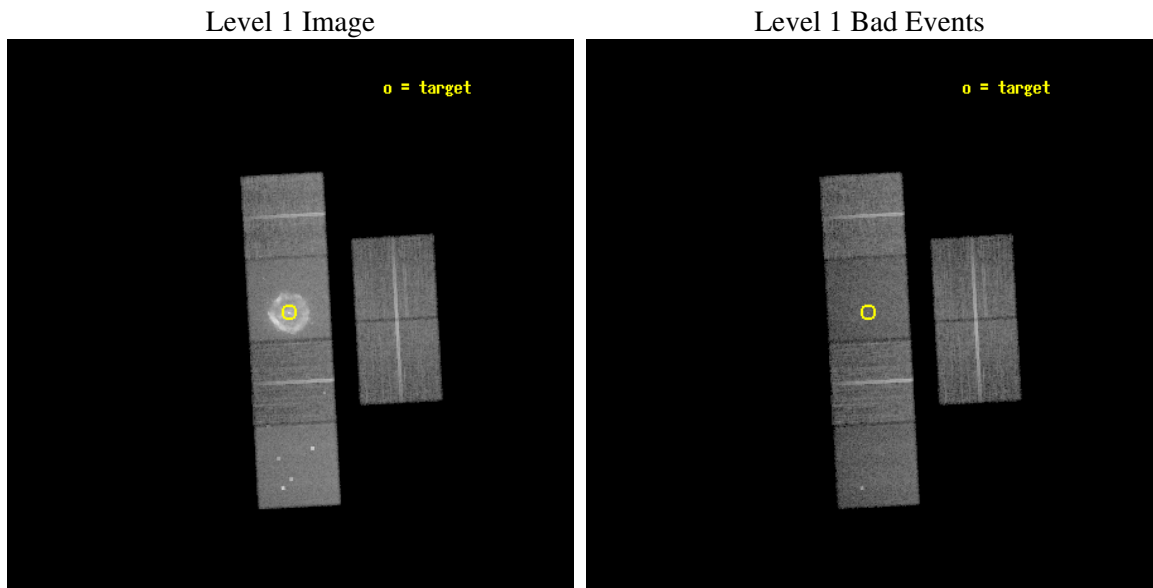
seq_num	500076
obs_id	780
title	THE HISTORIC SUPERNOVA REMNANT SYSTEM - G11.2-0.3
observer	Professor Victoria Kaspi
object	G11.2-0.3
dtcycle	0
cycle	P
ra_targ	272.8725
dec_targ	-19.423611
ra_nom	272.86955381012
dec_nom	-19.441075303129
roll_nom	266.87575295028
revision	3
ontime	19996.800018623
livetime	19743.58849616
ontime2	19996.800018623
ontime3	19996.800018623
ontime5	19996.800018623
ontime6	19996.800018623
ontime7	19996.800018623
ontime8	19993.559058383
l2events	297440



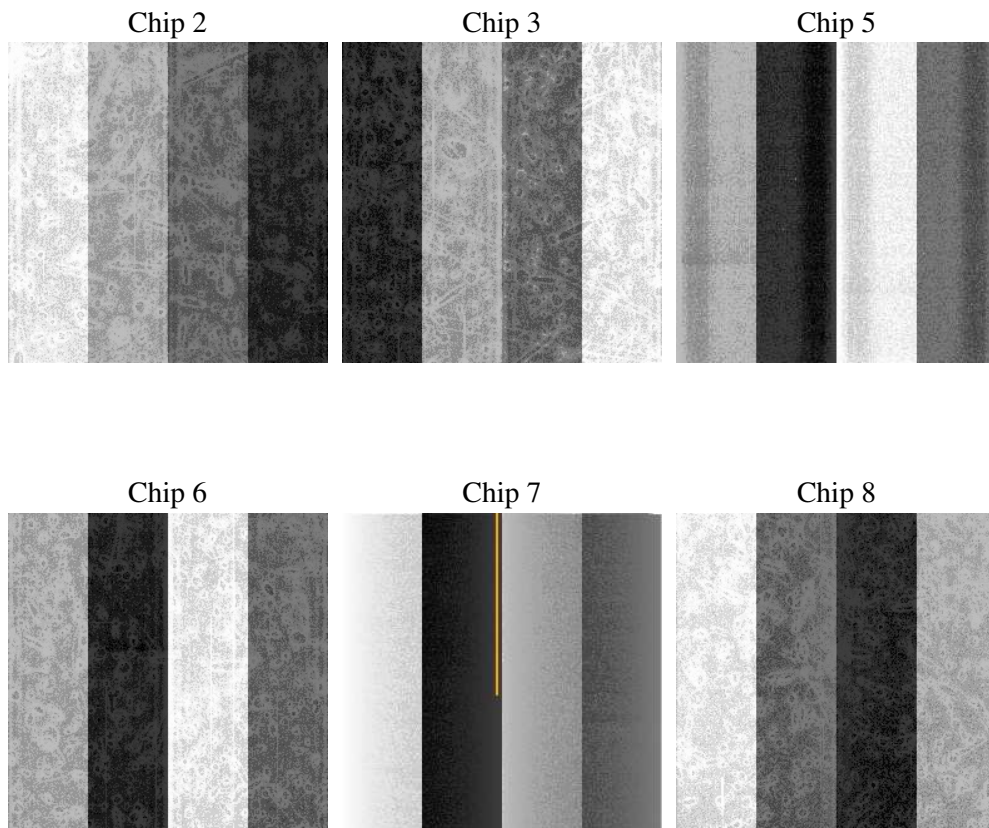
## 2 OBI

### 2.1 OBI

#### 2.1.1 Images



#### 2.1.2 Bias



### 2.1.3 Parameters

obi_num	0
ascdsver	7.6.10
caldsver	3.4.0
date	2007-06-02T04:41:11
revision	3

sched_exp_time	20000.000000
ontime	19996.800018623
ontime2	19996.800018623
ontime3	19996.800018623
ontime5	19996.800018623
ontime6	19996.800018623
ontime7	19996.800018623
ontime8	19993.559058383
l1events	909919

### 2.1.4 Events

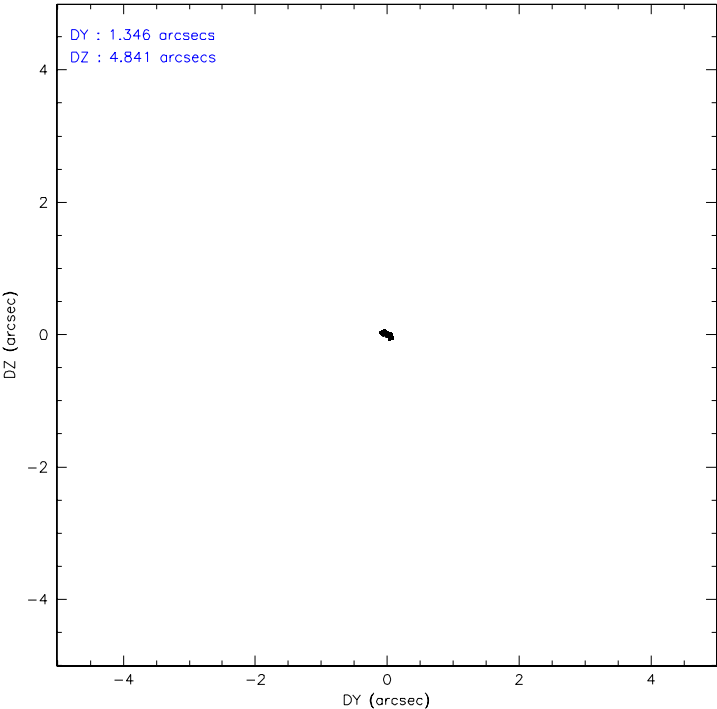
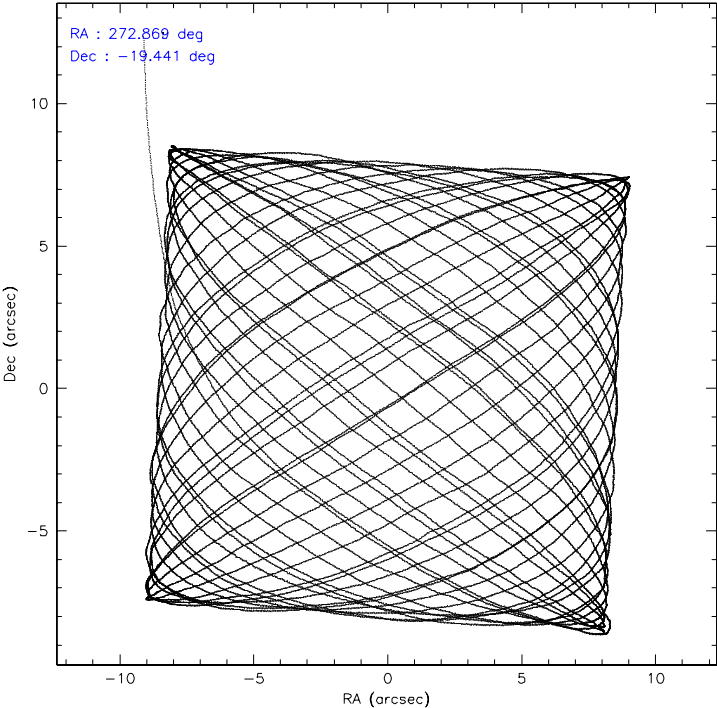
	ccd 2	ccd 3	ccd 5	ccd 6	ccd 7	ccd 8
level 1 events	115547	115727	157153	119217	255602	146673
rejected events	101157	100409	81944	101889	80791	114624
rejected %	87%	86%	52%	85%	31%	78%

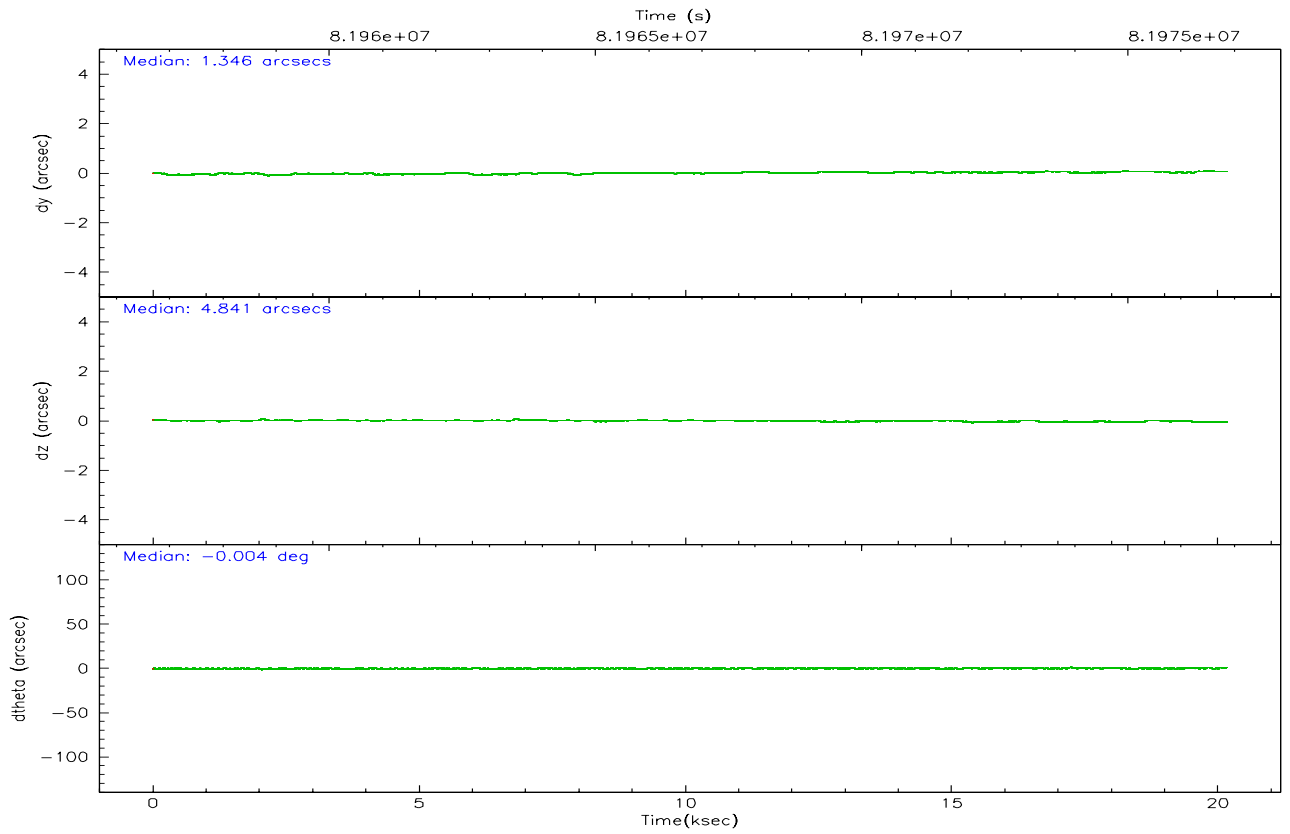
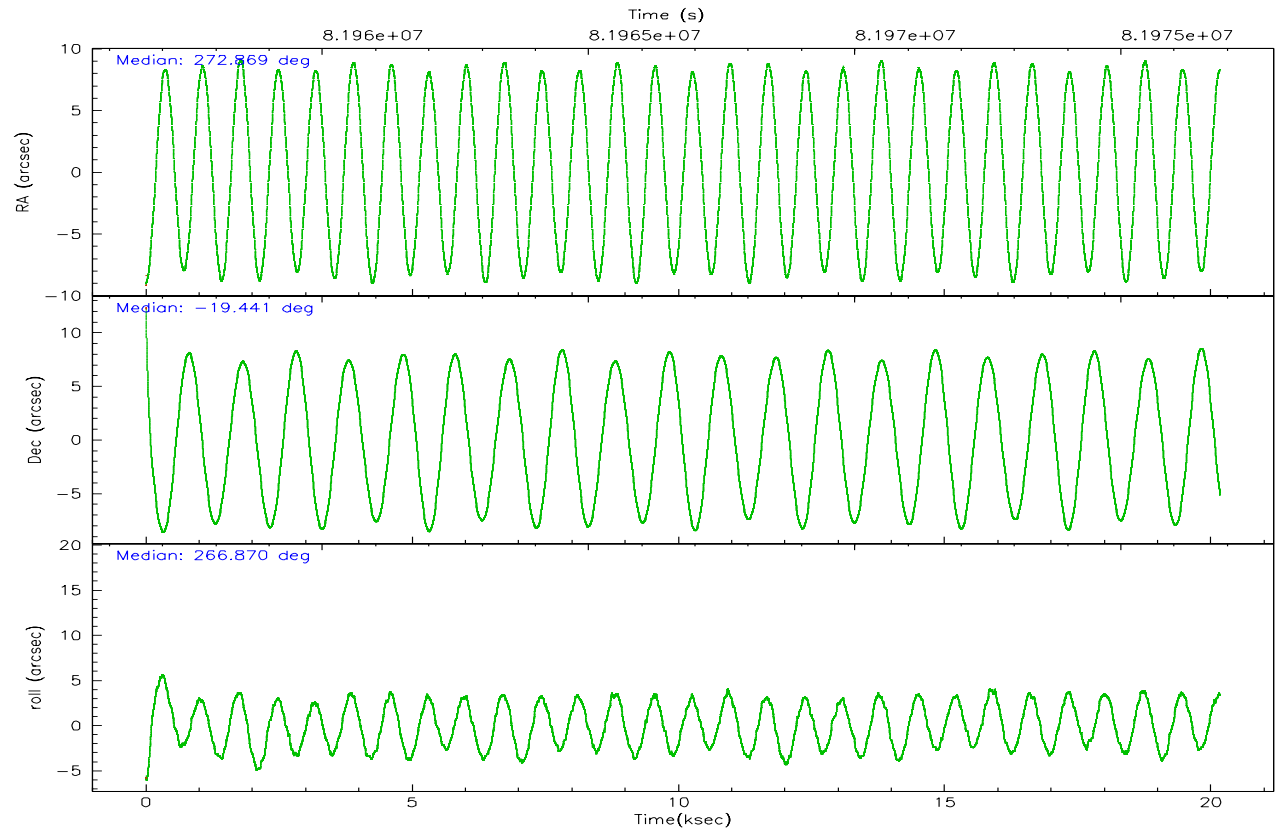
	ccd 2	ccd 3	ccd 5	ccd 6	ccd 7	ccd 8
grade 0 events	6820	7826	10470	9026	35156	12274
	5%	6%	6%	7%	13%	8%
grade 1 events	60	59	155	57	155	100
	0%	0%	0%	0%	0%	0%
grade 2 events	2824	2723	21368	2986	42426	6383
	2%	2%	13%	2%	16%	4%
grade 3 events	1257	1228	3550	1422	19447	3226
	1%	1%	2%	1%	7%	2%
grade 4 events	1288	1265	3188	1383	19308	2996
	1%	1%	2%	1%	7%	2%
grade 5 events	3700	4121	12099	4612	14022	5709
	3%	3%	7%	3%	5%	3%
grade 6 events	2209	2284	36667	2516	58534	7186
	1%	1%	23%	2%	22%	4%
grade 7 events	97389	96221	69656	97215	66554	108799
	84%	83%	44%	81%	26%	74%

## 2.2 Compared Parameters

Parameter	Planned	Actual	Parameter	Planned	Actual
Instrument	ACIS	ACIS	Obspar format version number	6	6
Detector	ACIS-235678	ACIS-235678	Obspar file type	PREDICTED	ACTUAL
Grating	NONE	NONE	Obspar update status	NONE	UPDATED
Data mode	FAINT	FAINT	Number of optional ACIS chips dropped	0	0
Observation mode	POINTING	POINTING	On-chip summing requested	N	N
Pointing RA	272.856277	272.8695538101232	Subarray requested	NONE	NONE
Pointing Dec	-19.416728	-19.44107530312889	Alternating exposures requested	N	N
Pointing Roll	266.714708	266.8757529502844	Primary exposure time	3.200000	3.2
SIM focus pos (mm)	-0.684267	-0.6828225247311905			
SIM defocus (mm)	0	0.001444936568705701			
SIM translation stage pos (mm)	-190.132523	-190.1400660498719			
SIM translation stage offset (mm)	0	0.00754346686406393			
Observation start time	81956863.184000	81955789.419282			
Observation start date	2000-08-06T13:46:39	2000-08-06T13:29:49			
Observation end time	81976863.184000	81977172.970079			
Observation end date	2000-08-06T19:19:59	2000-08-06T19:26:12			
Read mode	TIMED	TIMED			

## 2.3 Aspect





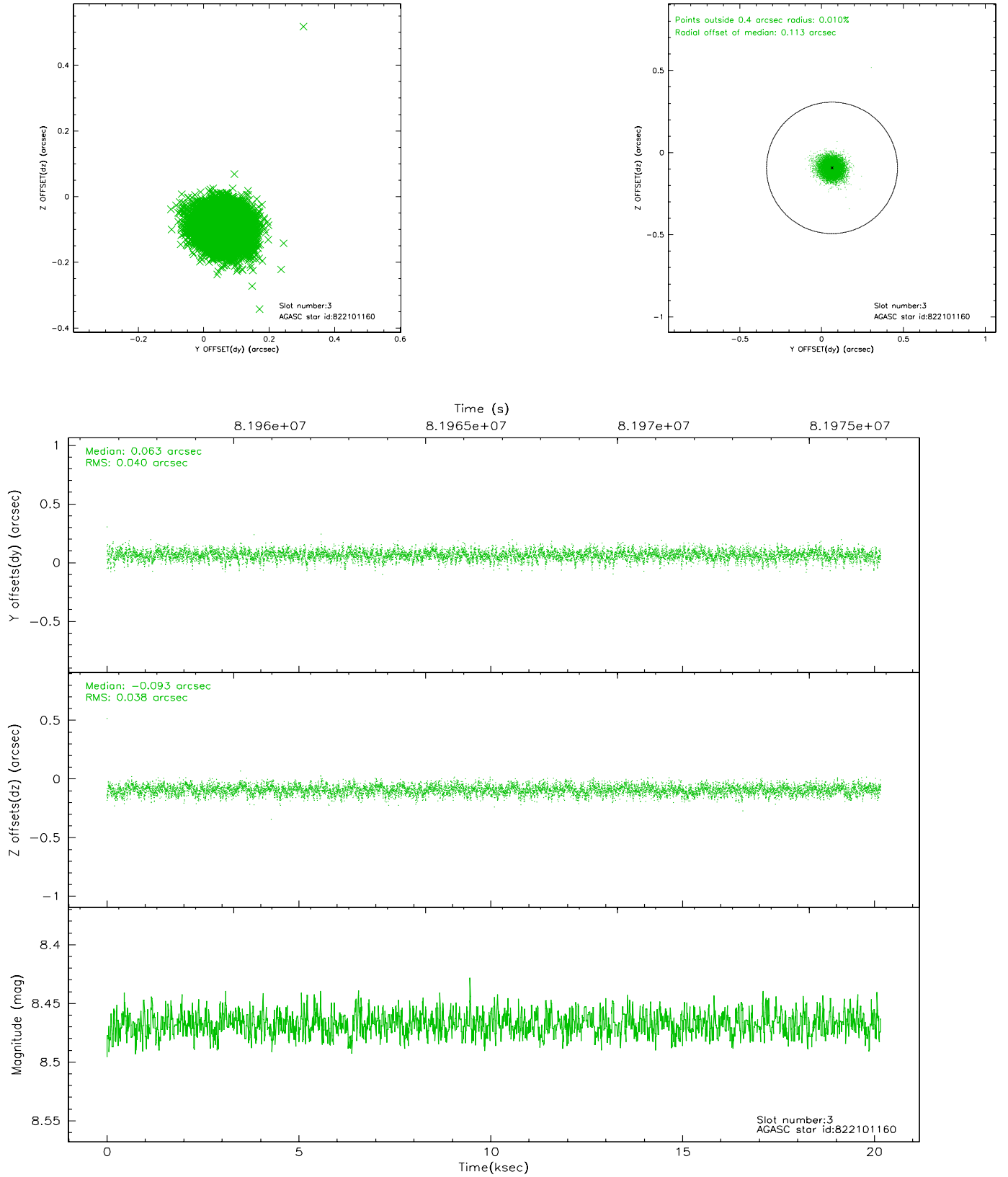
### Slot Statistics

slot	status	id	mag	n_pts	med_dy	med_dz	dr1	dr2	ra	dec	mean_y	mean_z
0	FID	ACIS-S-3	7.36	4920	-0.034	0.021	0.007	0.011	0.000000	0.000000	59.23	-1854.99
1	FID	ACIS-S-4	7.21	4918	-0.041	0.009	0.005	0.009	0.000000	0.000000	2159.37	182.34
2	FID	ACIS-S-5	7.24	4919	0.046	-0.020	0.006	0.010	0.000000	0.000000	-1806.50	176.20
3	GUIDE	822101160	8.47	9837	0.063	-0.093	0.059	0.094	272.245889	-20.018987	2287.85	-1936.28
4	GUIDE	822094768	9.23	9838	0.009	0.109	0.077	0.126	273.292799	-19.669391	826.21	1530.06
5	GUIDE	822086880	8.96	9834	-0.125	0.153	0.087	0.147	273.464058	-18.989477	-1649.87	1978.26
6	GUIDE	822093080	9.14	9836	-0.043	-0.111	0.072	0.116	272.547995	-18.931864	-1680.71	-1147.69
7	GUIDE	822100616	9.40	9832	0.091	-0.060	0.081	0.134	272.960097	-19.721770	1077.05	414.60

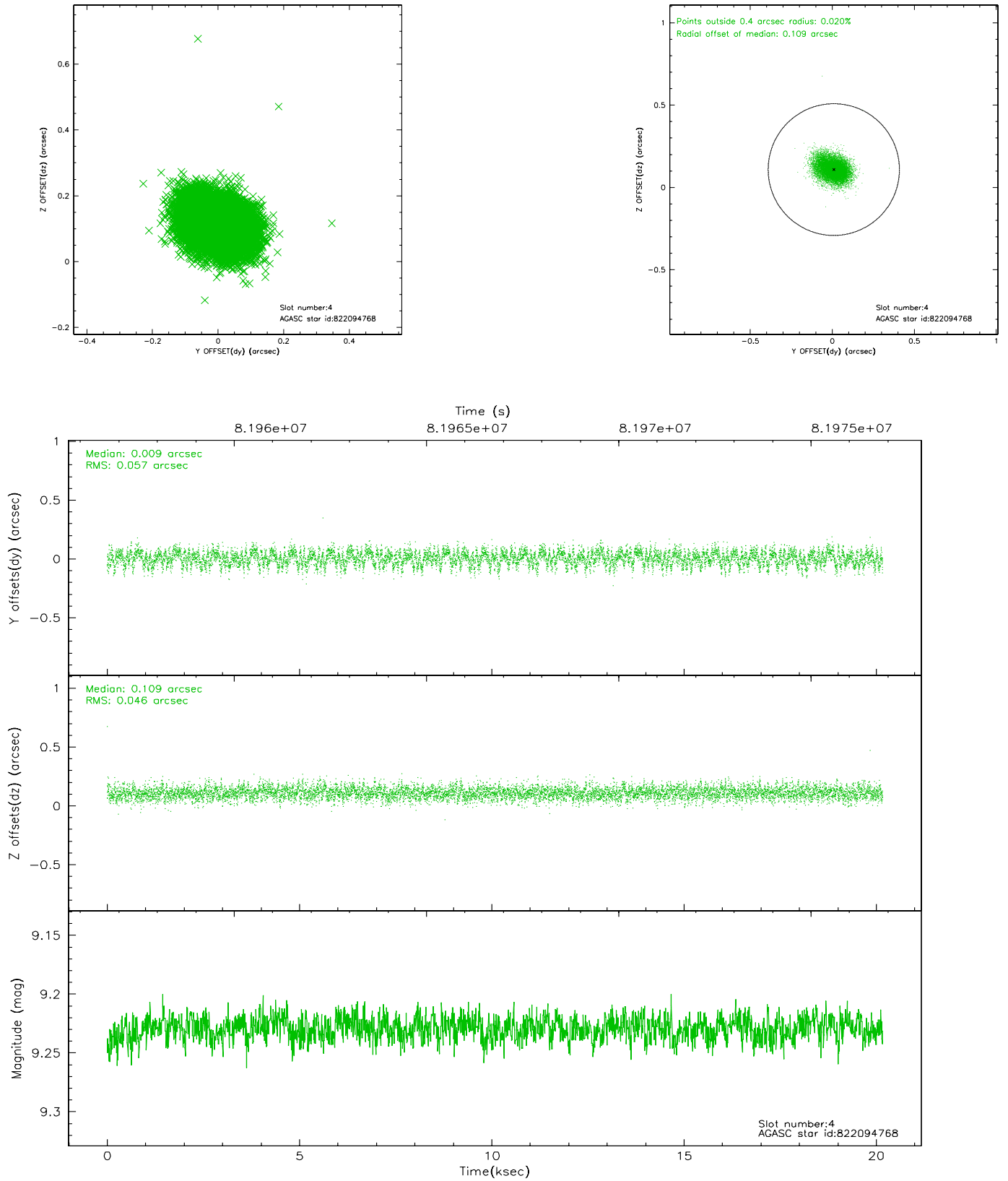


## 2.4 Star Slots

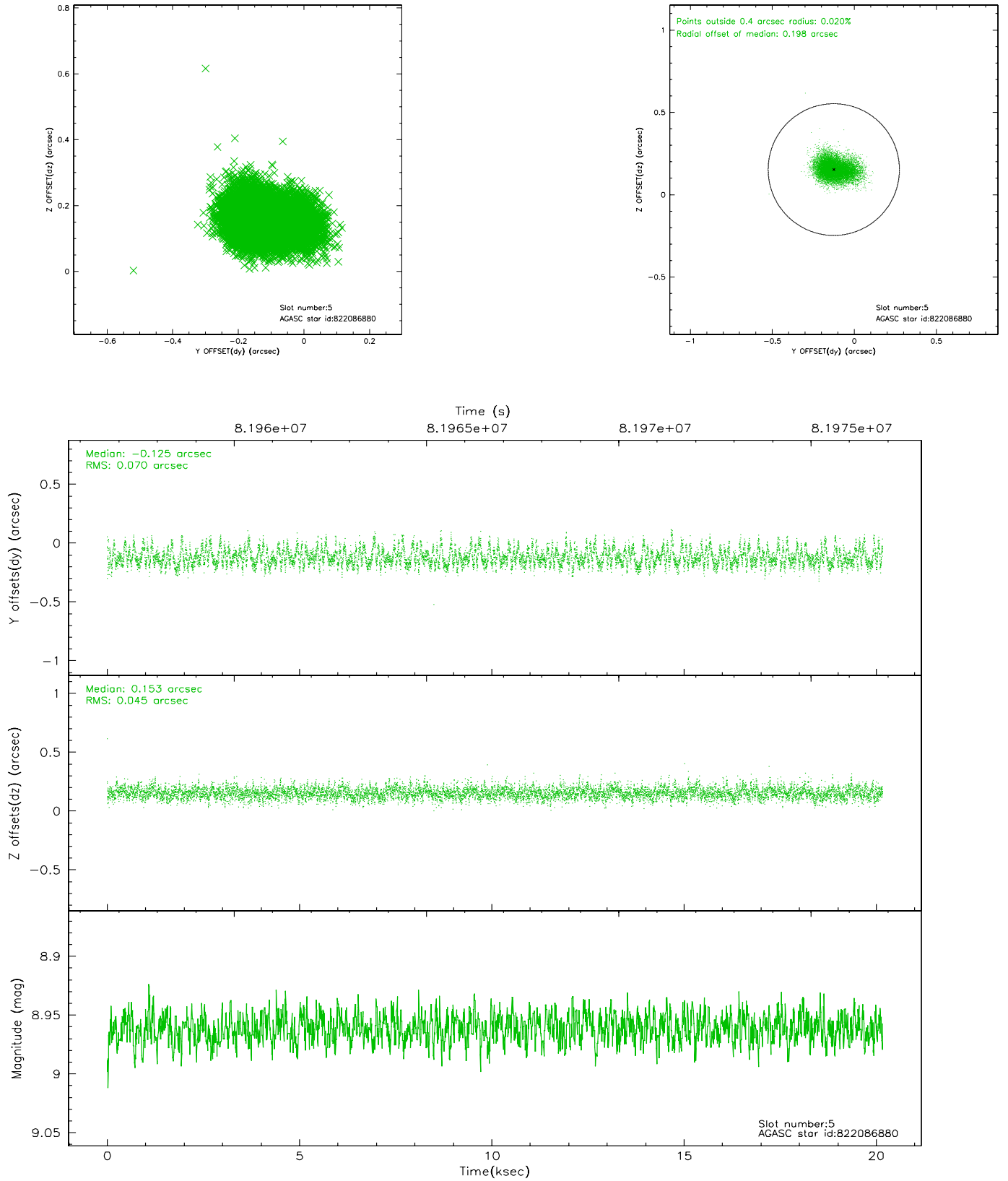
### 2.4.1 Slot 3



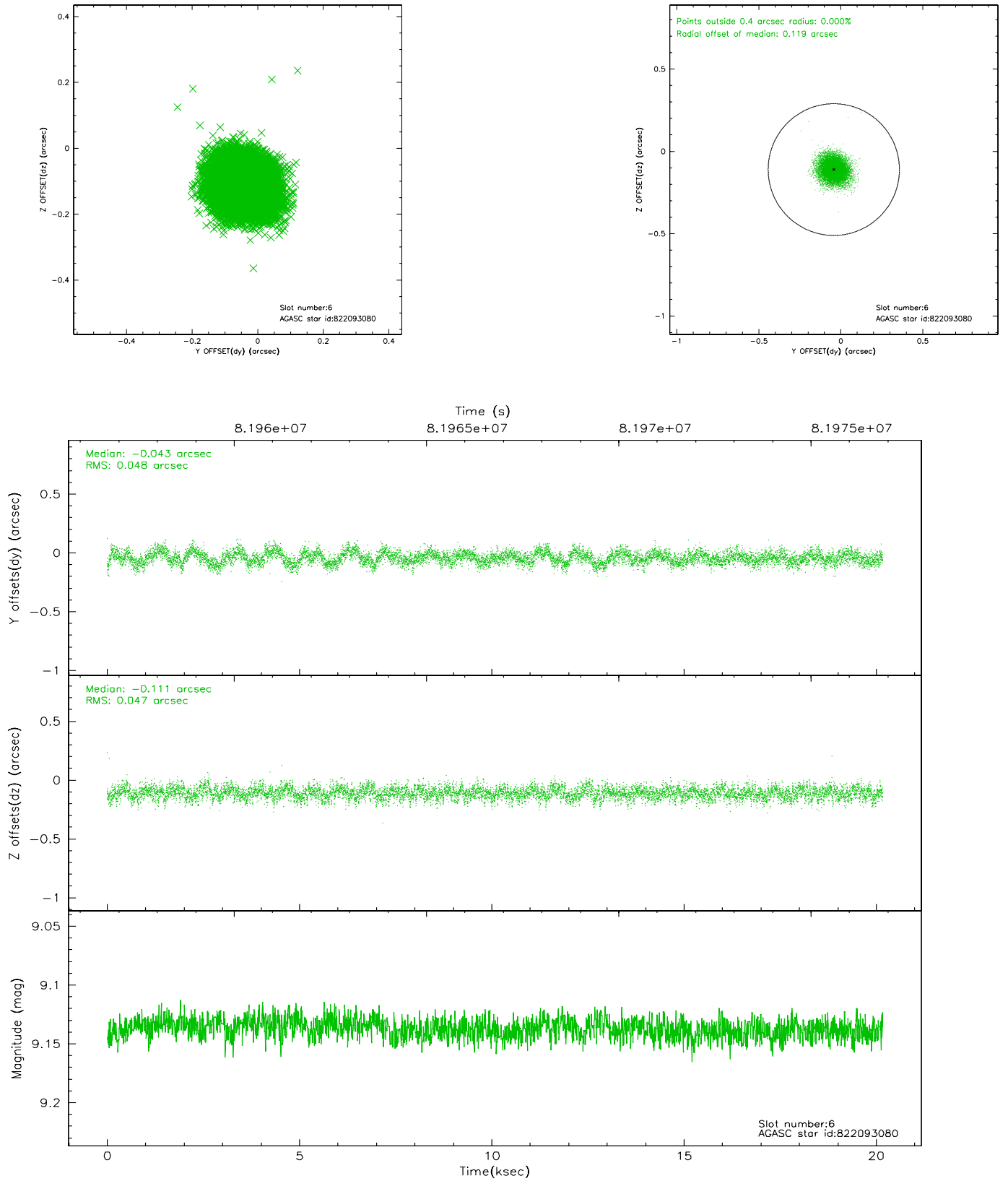
## 2.4.2 Slot 4



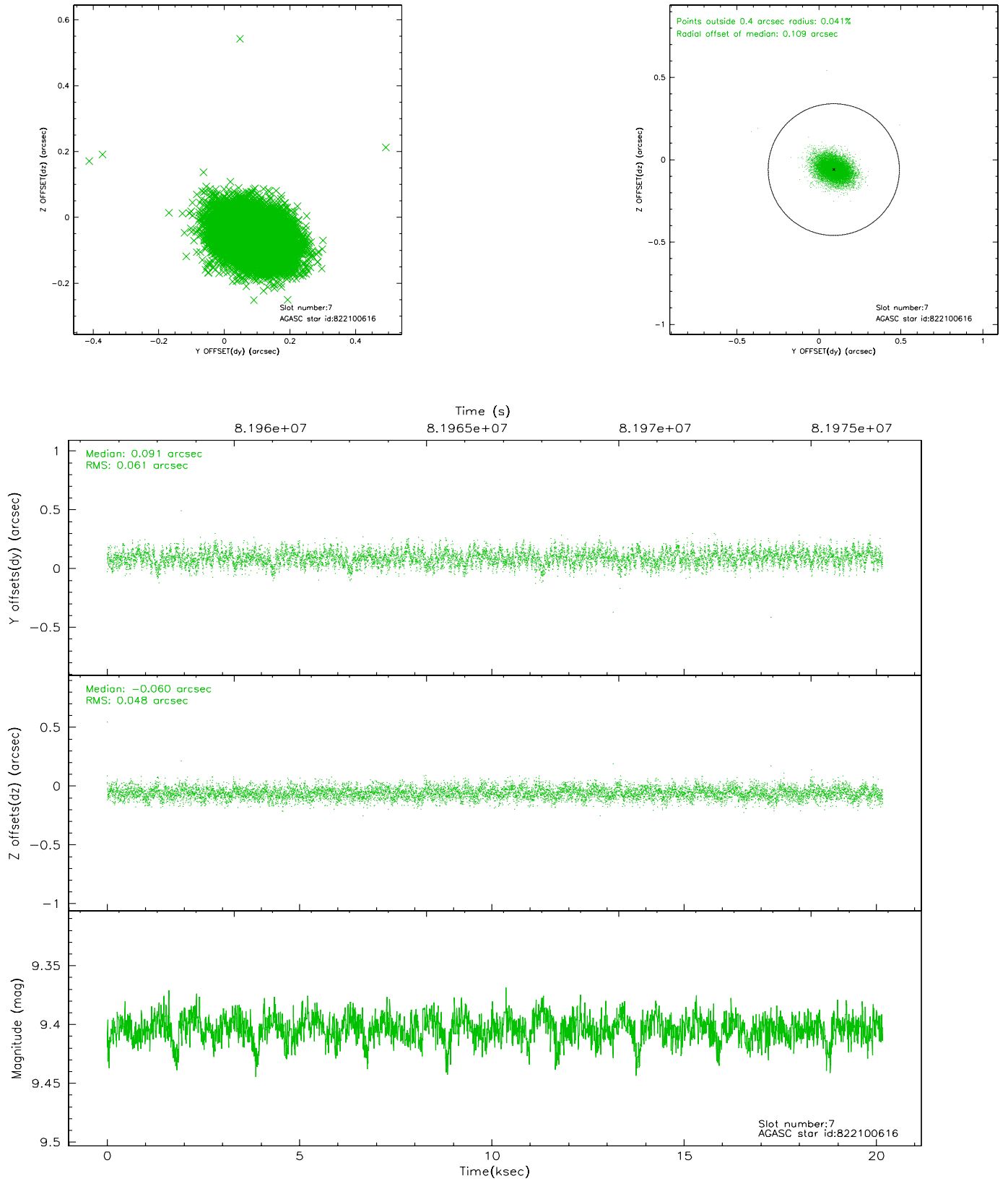
### 2.4.3 Slot 5



## 2.4.4 Slot 6

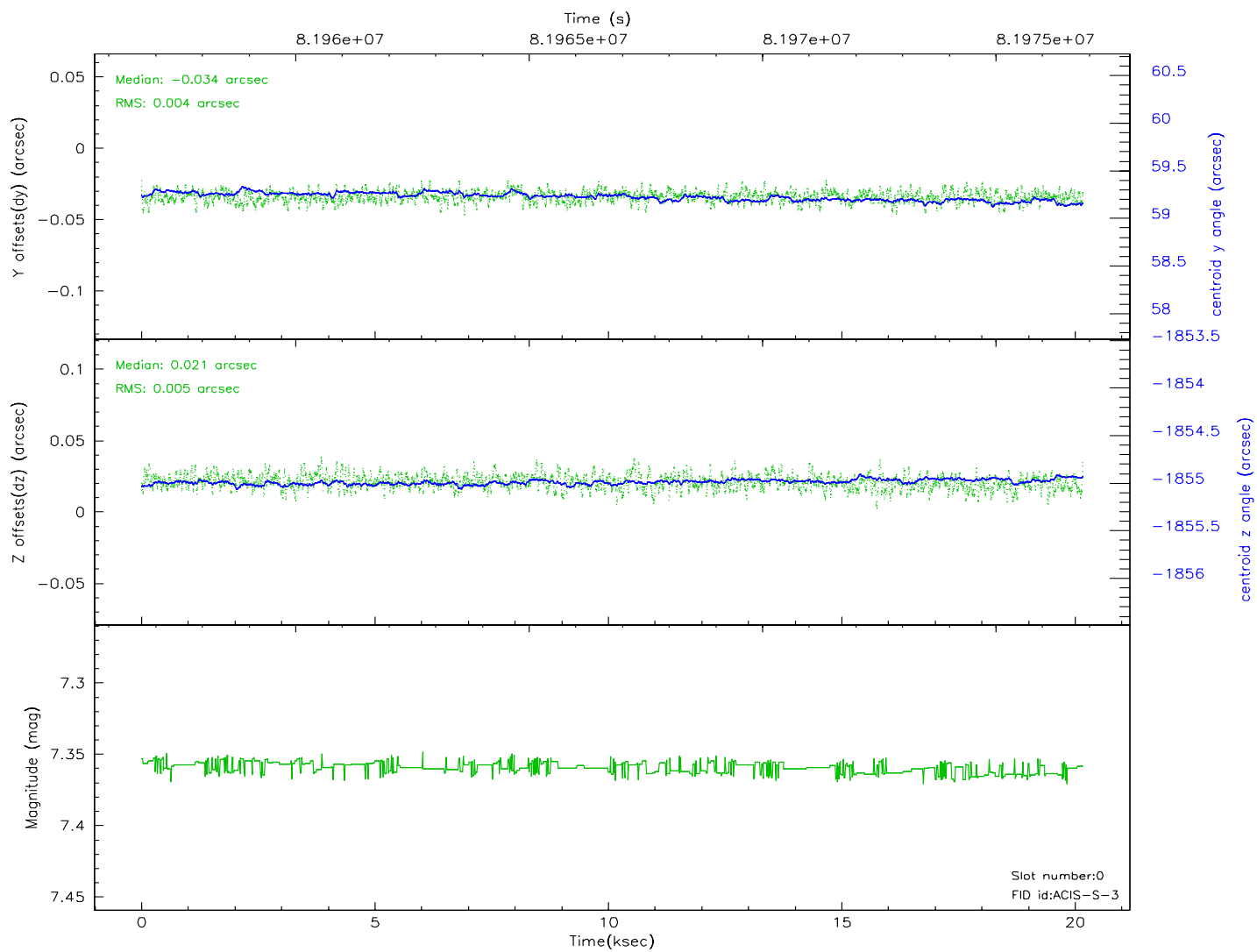
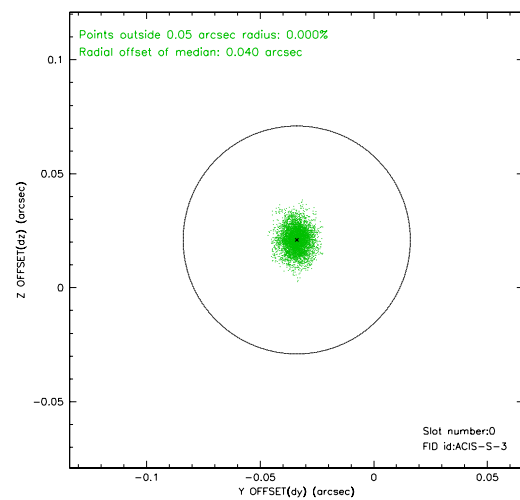
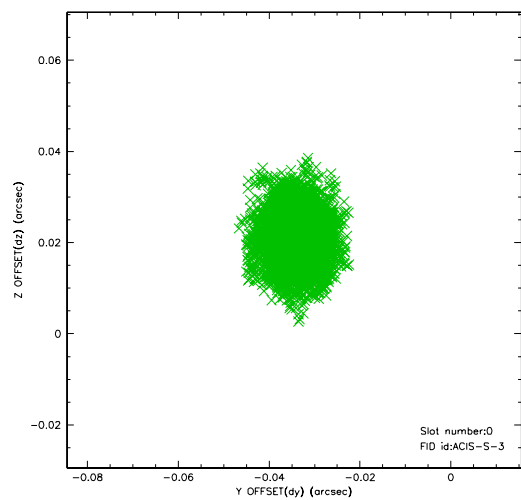


## 2.4.5 Slot 7

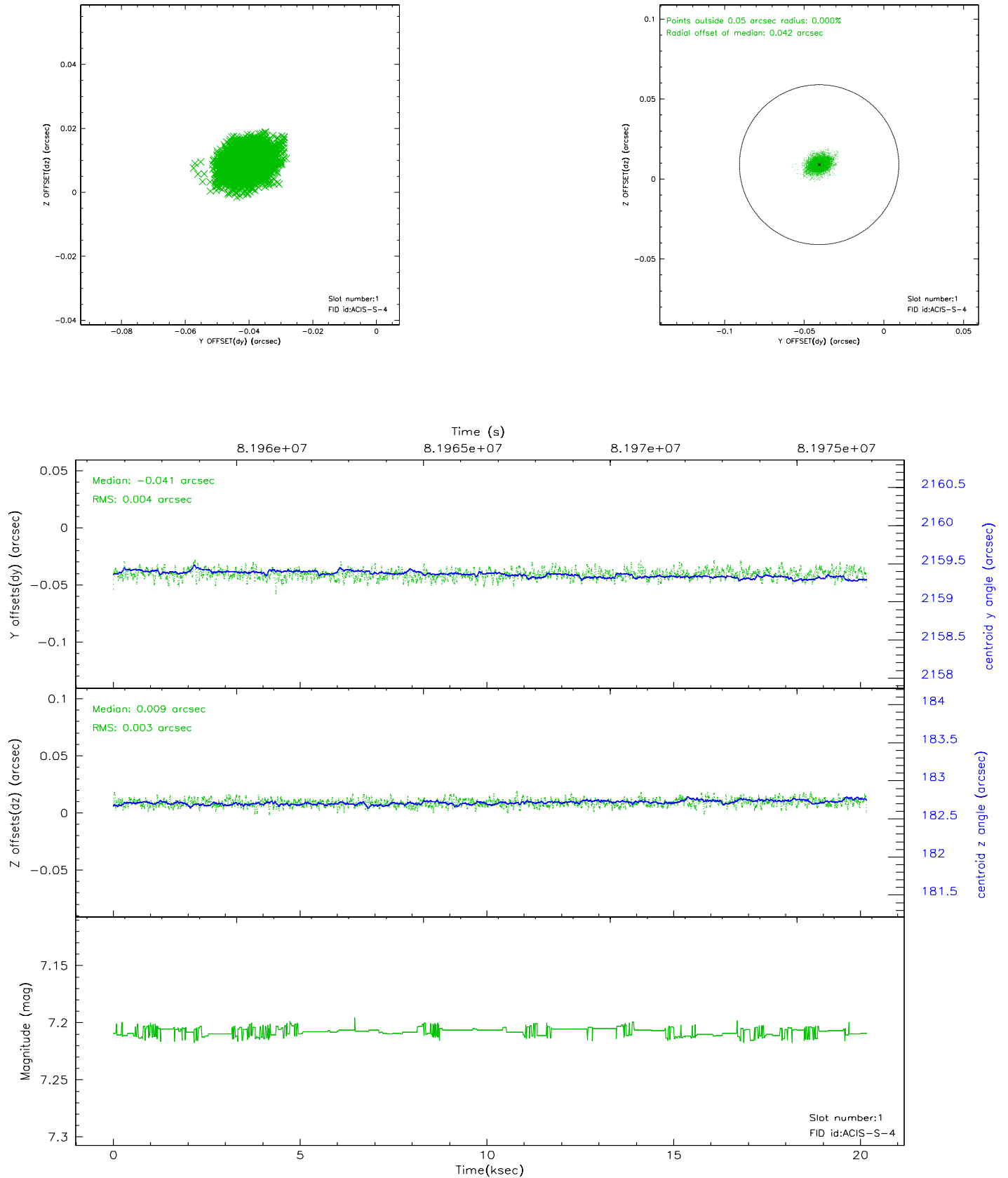


## 2.5 FID Slots

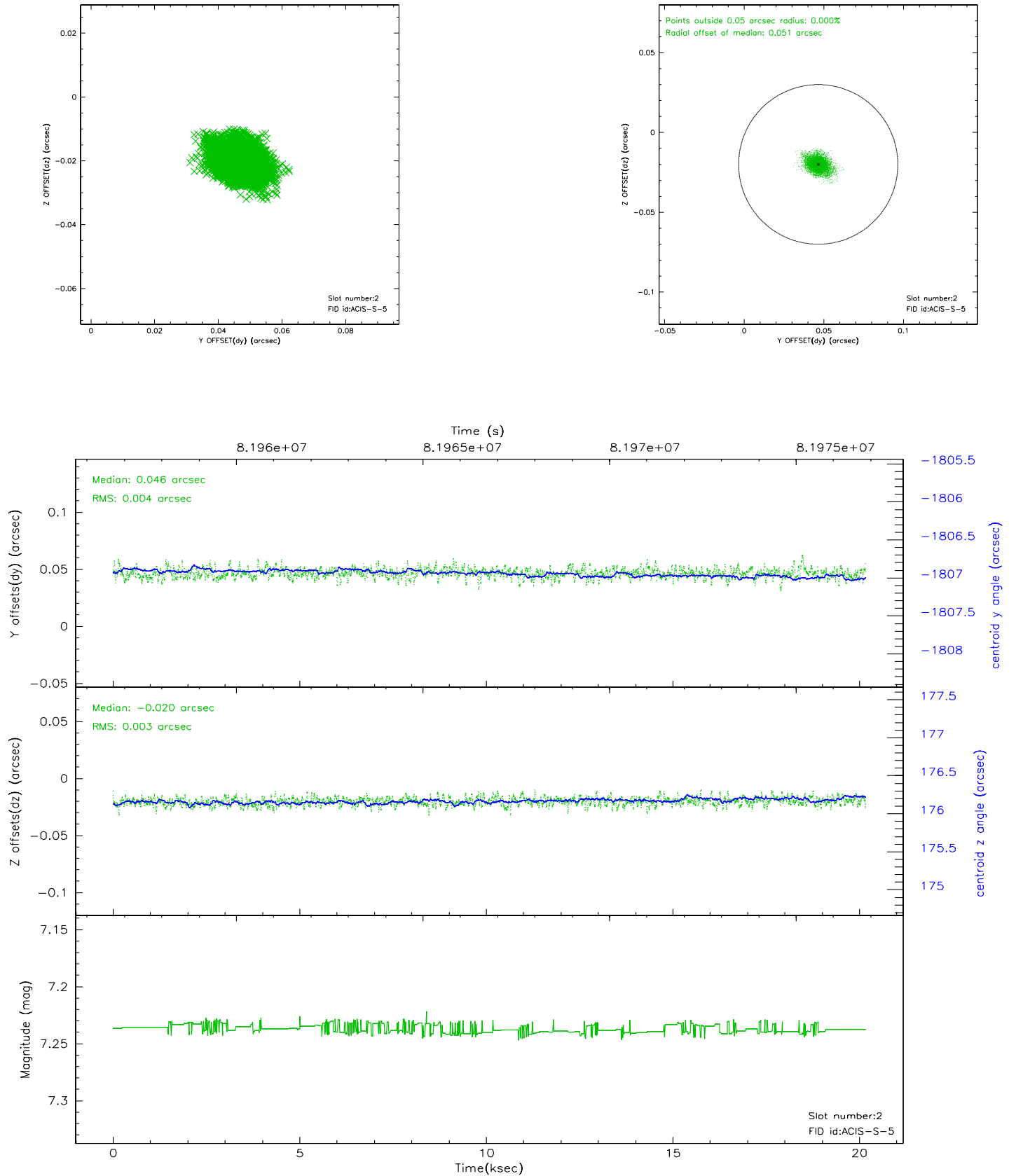
### 2.5.1 Slot 0



## 2.5.2 Slot 1

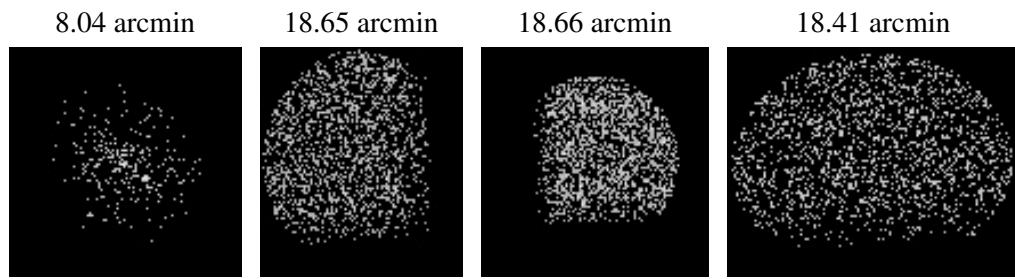


### 2.5.3 Slot 2





### 3 Point Sources



## A Summary

### A.1 Status

V&V Scientist	Beth Sundheim
V&V Date (YYYY-MM-DD)	2007.06.05
V&V Edition	1
V&V Disposition and Status	OK
V&V Charge Time	20

### A.2 Comments