

V&V Reference Report

L2 ASCDS Version : 7.6.10

Observation 739 - L2 Version 001
Chandra X-Ray Center

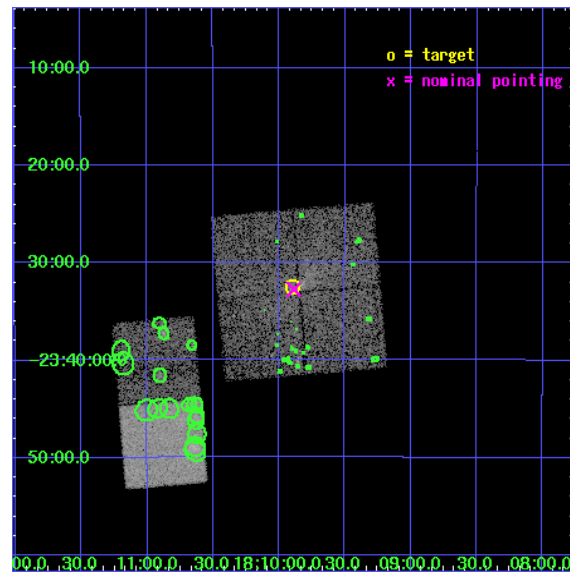
L2 Processing Date : Jun 5 2007

Contents

1	Front	2
2	OBI	3
2.1	OBI	3
2.1.1	Images	3
2.1.2	Bias	3
2.1.3	Parameters	4
2.1.4	Events	4
2.2	Compared Parameters	5
2.3	Aspect	6
2.4	Star Slots	9
2.4.1	Slot 3	9
2.4.2	Slot 4	10
2.4.3	Slot 5	11
2.4.4	Slot 6	12
2.4.5	Slot 7	13
2.5	FID Slots	14
2.5.1	Slot 0	14
2.5.2	Slot 1	15
2.5.3	Slot 2	16
3	Point Sources	17
A	Summary	18
A.1	Status	18
A.2	Comments	18

1 Front

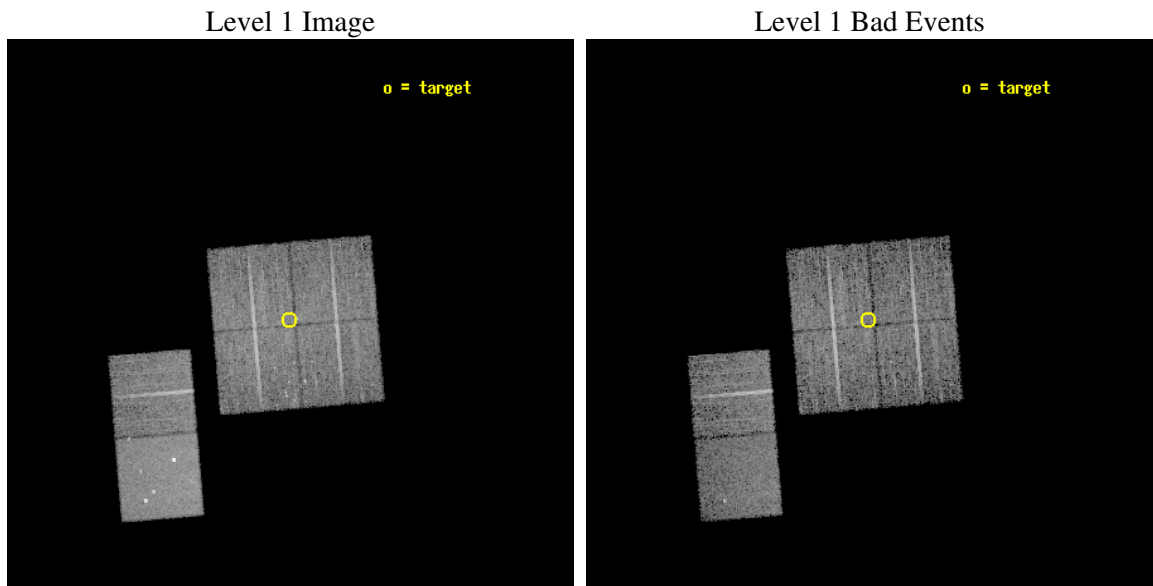
seq_num	500035
obs_id	739
title	THE ENVIRONMENT AND X-RAY COUNTERPART OF 2EG J1811-2339
observer	Prof. Roger Romani
object	2EG J1811-2339
dtcycle	0
cycle	P
ra_targ	272.474167
dec_targ	-23.541667
ra_nom	272.47166291362
dec_nom	-23.54601016844
roll_nom	265.20768884874
revision	2
ontime	9820.8000091463
livetime	9696.4431260547
ontime0	9820.8000091463
ontime1	9820.8000091463
ontime2	9820.8000091463
ontime3	9820.8000091463
ontime5	9820.8000091463
ontime6	9820.8000091463
l2events	73375



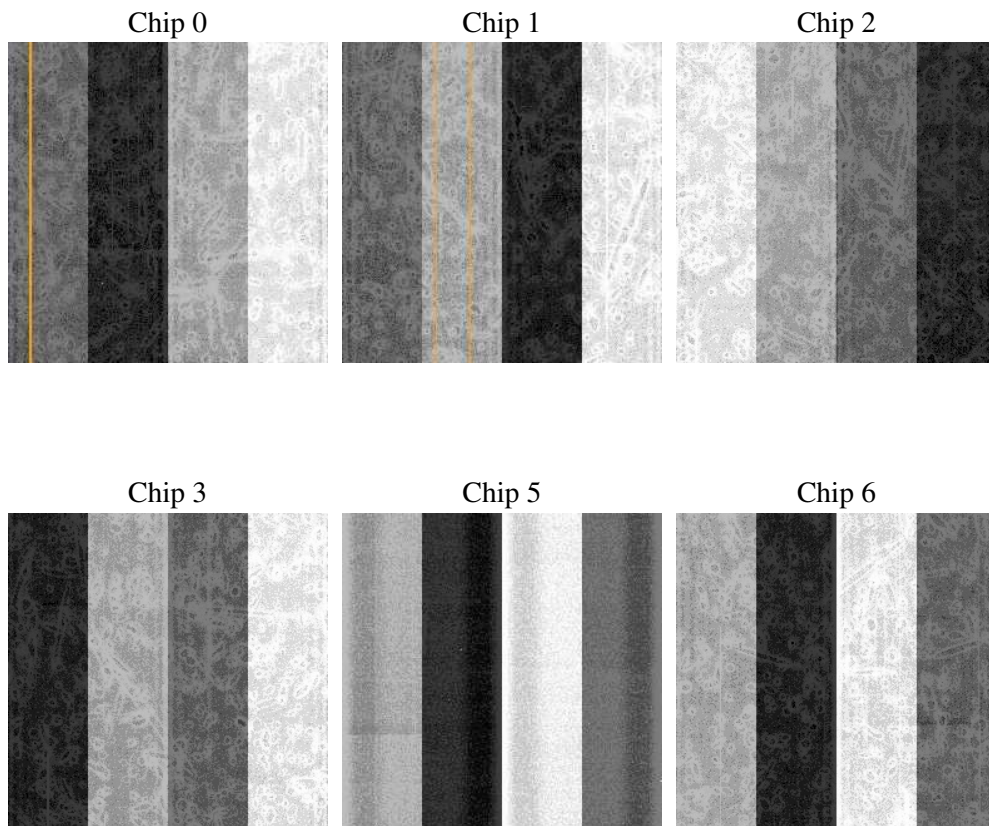
2 OBI

2.1 OBI

2.1.1 Images



2.1.2 Bias



2.1.3 Parameters

obi_num	0
ascdsver	7.6.10
caldsver	3.4.0
date	2007-06-05T04:25:53
revision	2

sched_exp_time	9850.000000
ontime	9820.8000091463
ontime0	9820.8000091463
ontime1	9820.8000091463
ontime2	9820.8000091463
ontime3	9820.8000091463
ontime5	9820.8000091463
ontime6	9820.8000091463
l1events	354529

2.1.4 Events

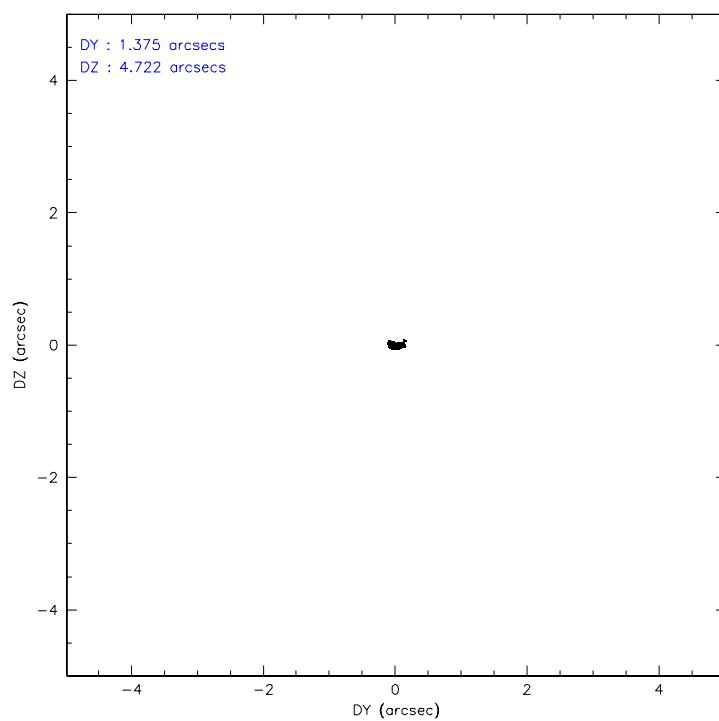
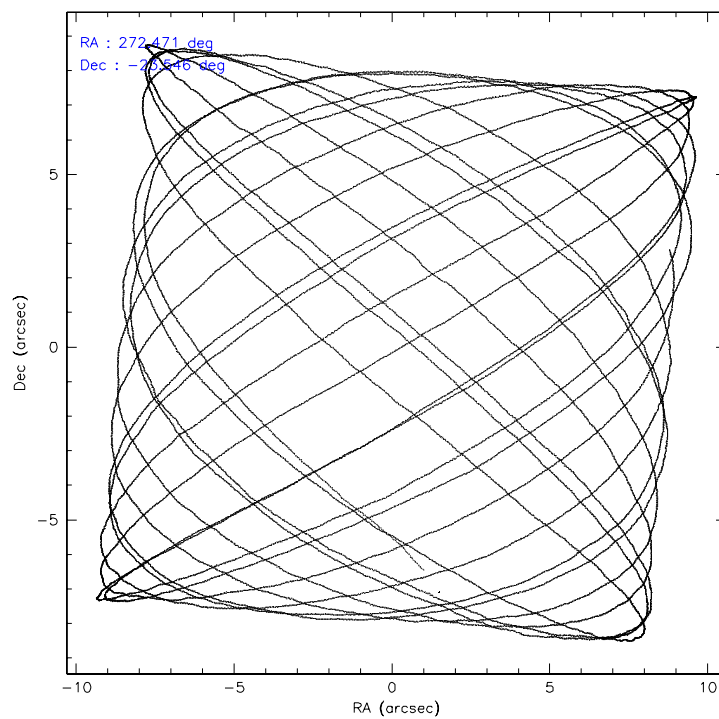
	ccd 0	ccd 1	ccd 2	ccd 3	ccd 5	ccd 6
level 1 events	51611	52005	57641	56788	79250	57234
rejected events	42216	41890	47867	48599	41217	49244
rejected %	81%	80%	83%	85%	52%	86%

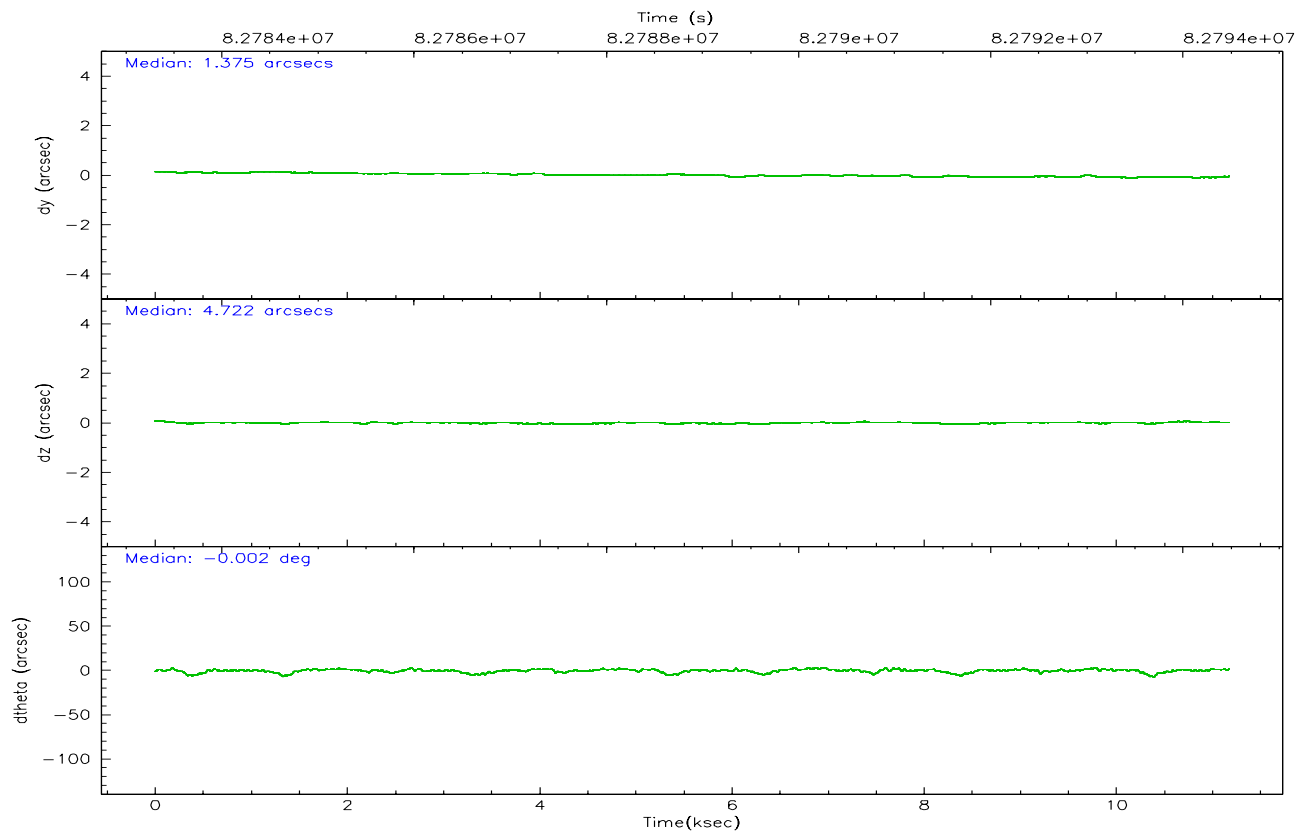
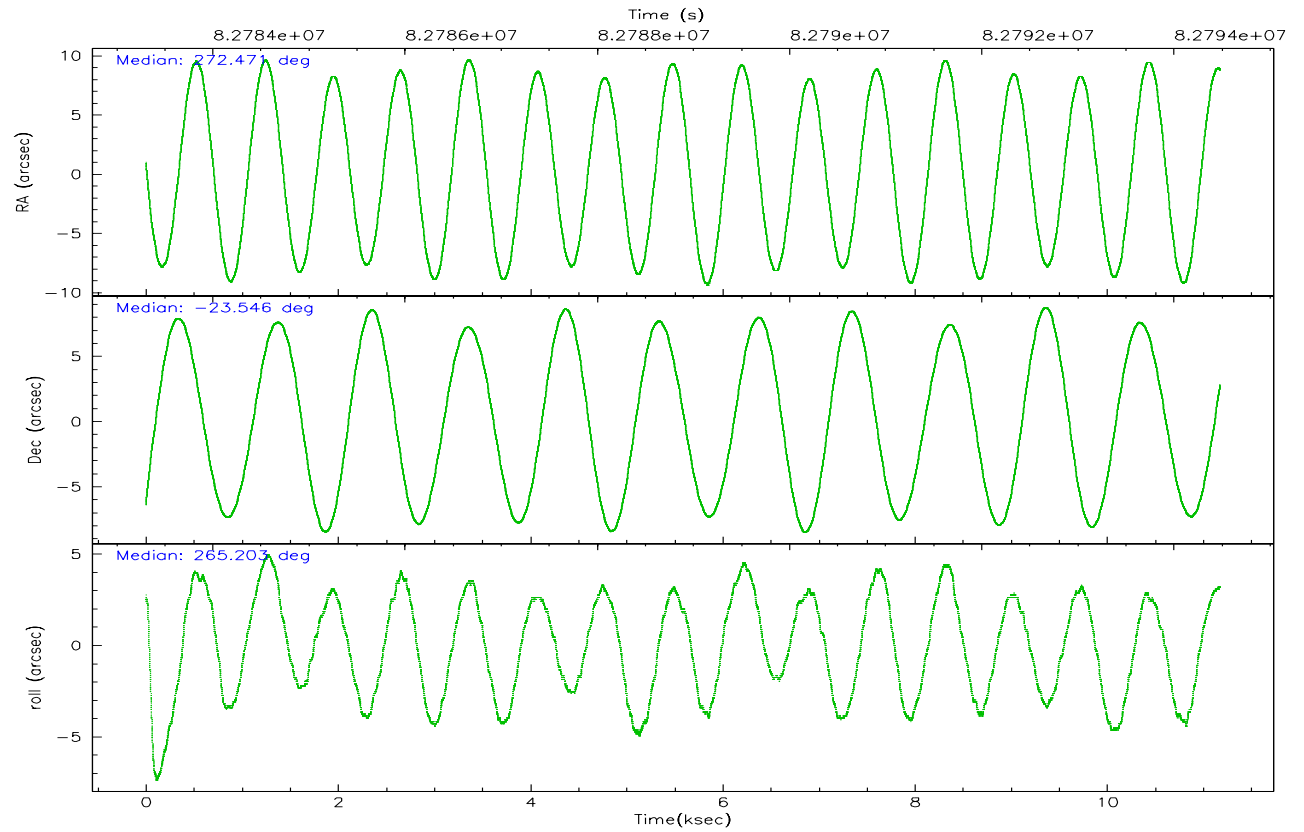
	ccd 0	ccd 1	ccd 2	ccd 3	ccd 5	ccd 6
grade 0 events	4938	5265	5276	3990	5954	3720
	9%	10%	9%	7%	7%	6%
grade 1 events	25	42	22	24	102	30
	0%	0%	0%	0%	0%	0%
grade 2 events	1773	1799	1829	1601	10915	1562
	3%	3%	3%	2%	13%	2%
grade 3 events	678	794	662	646	1660	688
	1%	1%	1%	1%	2%	1%
grade 4 events	688	836	686	674	1576	652
	1%	1%	1%	1%	1%	1%
grade 5 events	1877	2001	1766	2032	5604	2234
	3%	3%	3%	3%	7%	3%
grade 6 events	1324	1425	1324	1284	17941	1371
	2%	2%	2%	2%	22%	2%
grade 7 events	40308	39843	46076	46537	35498	46977
	78%	76%	79%	81%	44%	82%

2.2 Compared Parameters

Parameter	Planned	Actual	Parameter	Planned	Actual
Instrument	ACIS	ACIS	Obspar format version number	6	6
Detector	ACIS-012356	ACIS-012356	Obspar file type	PREDICTED	ACTUAL
Grating	NONE	NONE	Obspar update status	NONE	UPDATED
Data mode	FAINT	FAINT	Number of optional ACIS chips dropped	0	0
Observation mode	POINTING	POINTING	On-chip summing requested	N	N
Pointing RA	272.458983	272.4716629136174	Subarray requested	NONE	NONE
Pointing Dec	-23.521039	-23.5460101684396	Alternating exposures requested	N	N
Pointing Roll	264.993939	265.2076888487425	Primary exposure time	3.200000	3.2
SIM focus pos (mm)	-0.782348	-0.7809083437167272			
SIM defocus (mm)	0	0.001439871863259334			
SIM translation stage pos (mm)	-233.592463	-233.5874344608287			
SIM translation stage offset (mm)	0	-0.005018542100998502			
Observation start time	82784626.184000	82783006.98769701			
Observation start date	2000-08-16T03:42:42	2000-08-16T03:16:46			
Observation end time	82794476.184000	82795769.775675			
Observation end date	2000-08-16T06:26:52	2000-08-16T06:49:29			
Read mode	TIMED	TIMED			

2.3 Aspect



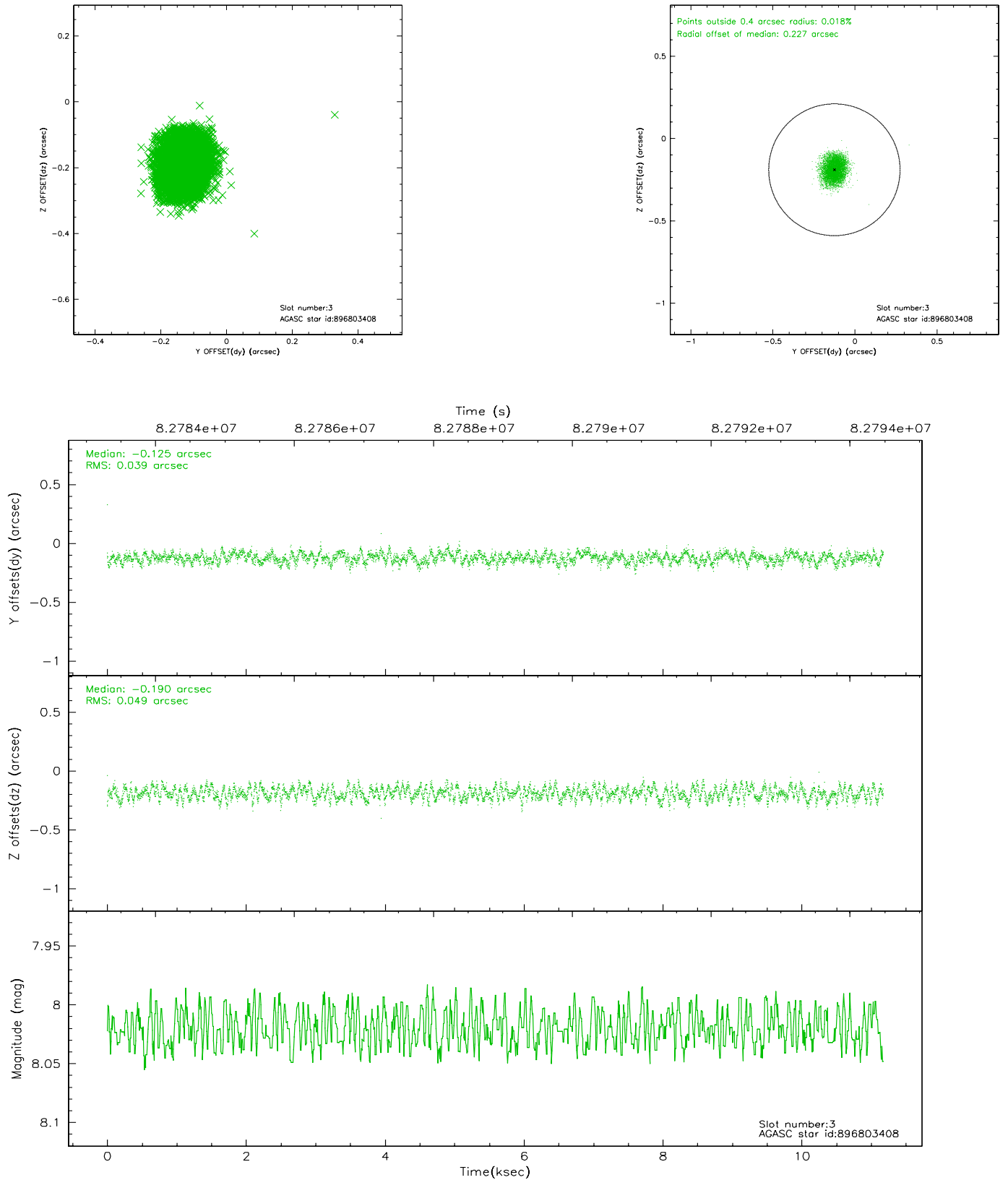


Slot Statistics

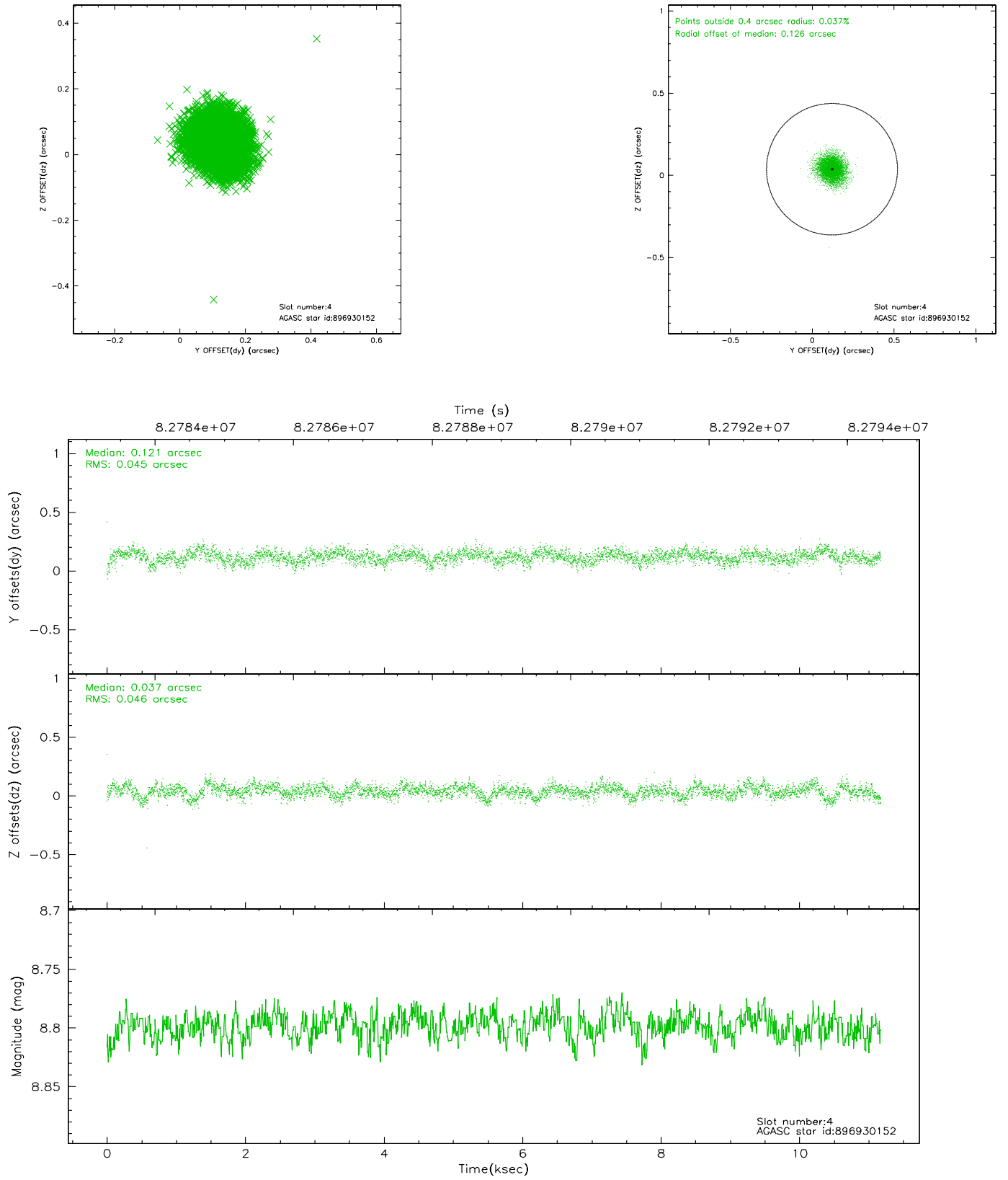
slot	status	id	mag	n_pts	med_dy	med_dz	dr1	dr2	ra	dec	mean_y	mean_z
0	FID	ACIS-I-2	7.15	2726	-0.022	-0.010	0.011	0.020	0.000000	0.000000	-755.73	-834.43
1	FID	ACIS-I-4	7.19	2725	-0.072	0.025	0.011	0.038	0.000000	0.000000	2158.05	1071.57
2	FID	ACIS-I-5	7.23	2726	-0.006	0.054	0.015	0.042	0.000000	0.000000	-1808.96	1069.94
3	GUIDE	896803408	8.02	5453	-0.125	-0.190	0.067	0.104	271.939176	-23.105136	-1338.37	-1844.83
4	GUIDE	896930152	8.80	5452	0.121	0.037	0.069	0.111	272.636345	-23.919019	1376.41	706.84
5	GUIDE	896935016	9.56	5449	0.037	0.104	0.097	0.157	272.726383	-23.692909	540.39	933.00
6	GUIDE	896806352	9.58	5427	-0.216	-0.172	0.083	0.134	271.925222	-22.897389	-2078.97	-1958.75
7	GUIDE	896936504	9.86	5450	0.181	0.220	0.111	0.175	273.018451	-24.101167	1923.25	2014.67

2.4 Star Slots

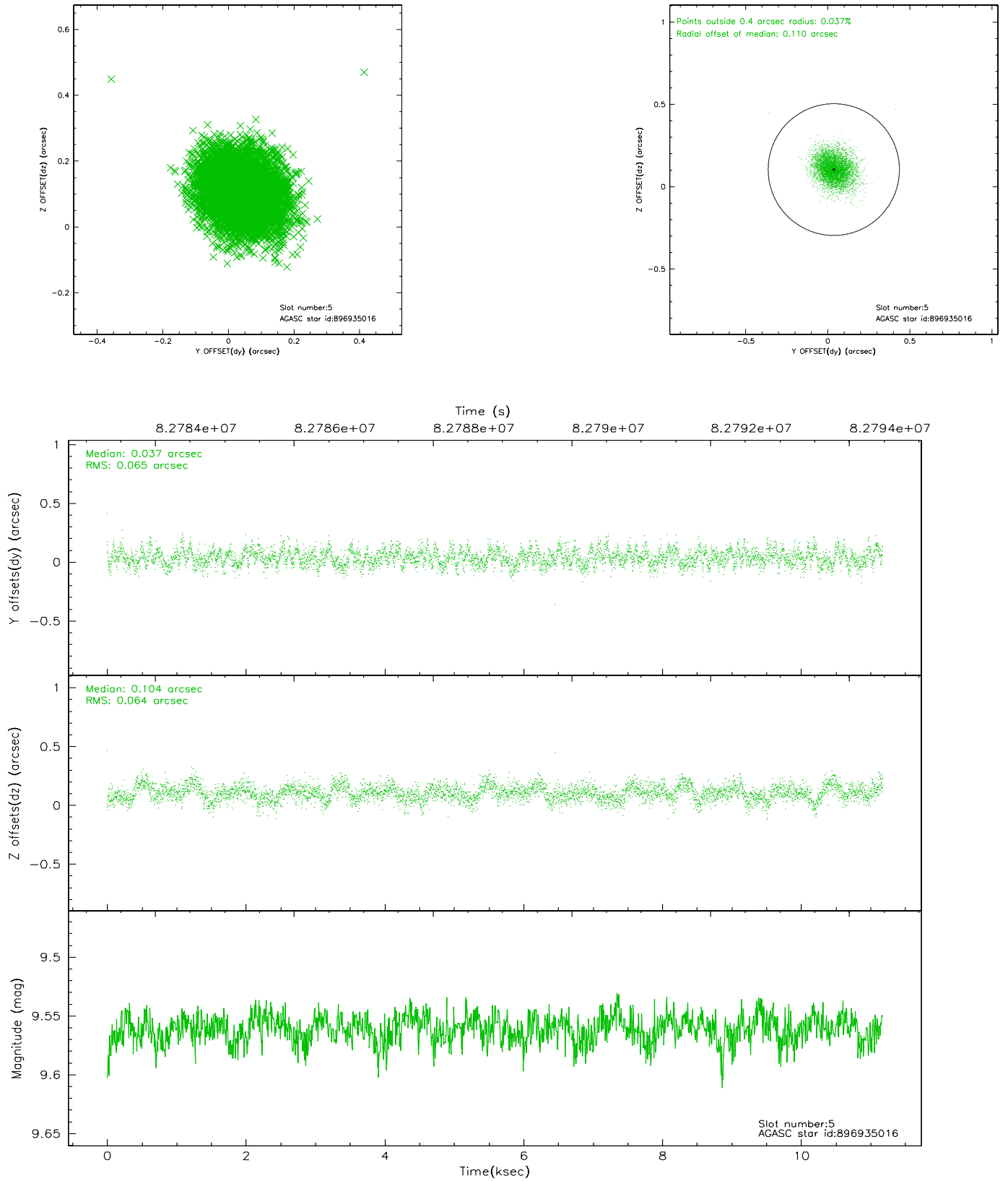
2.4.1 Slot 3



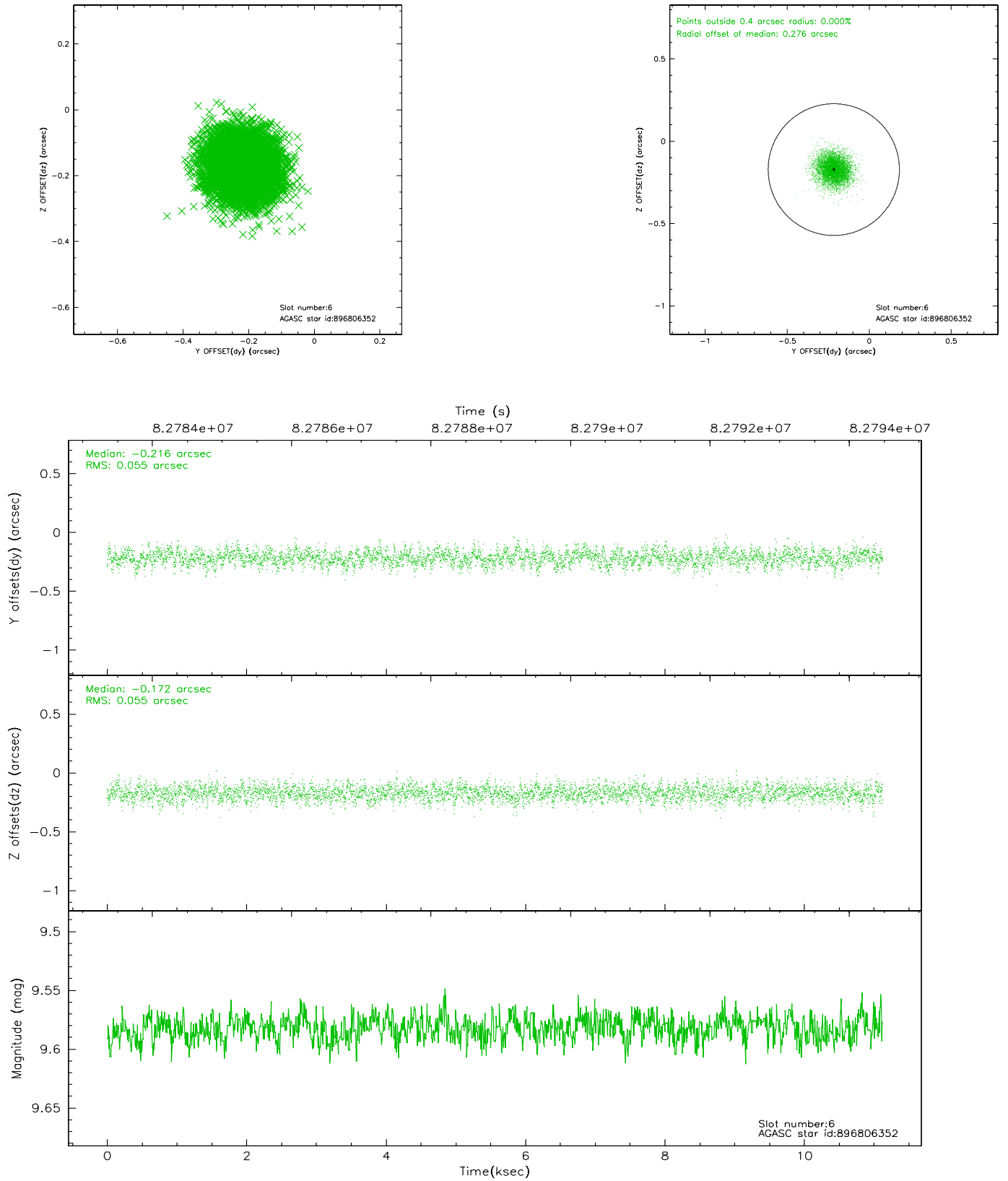
2.4.2 Slot 4



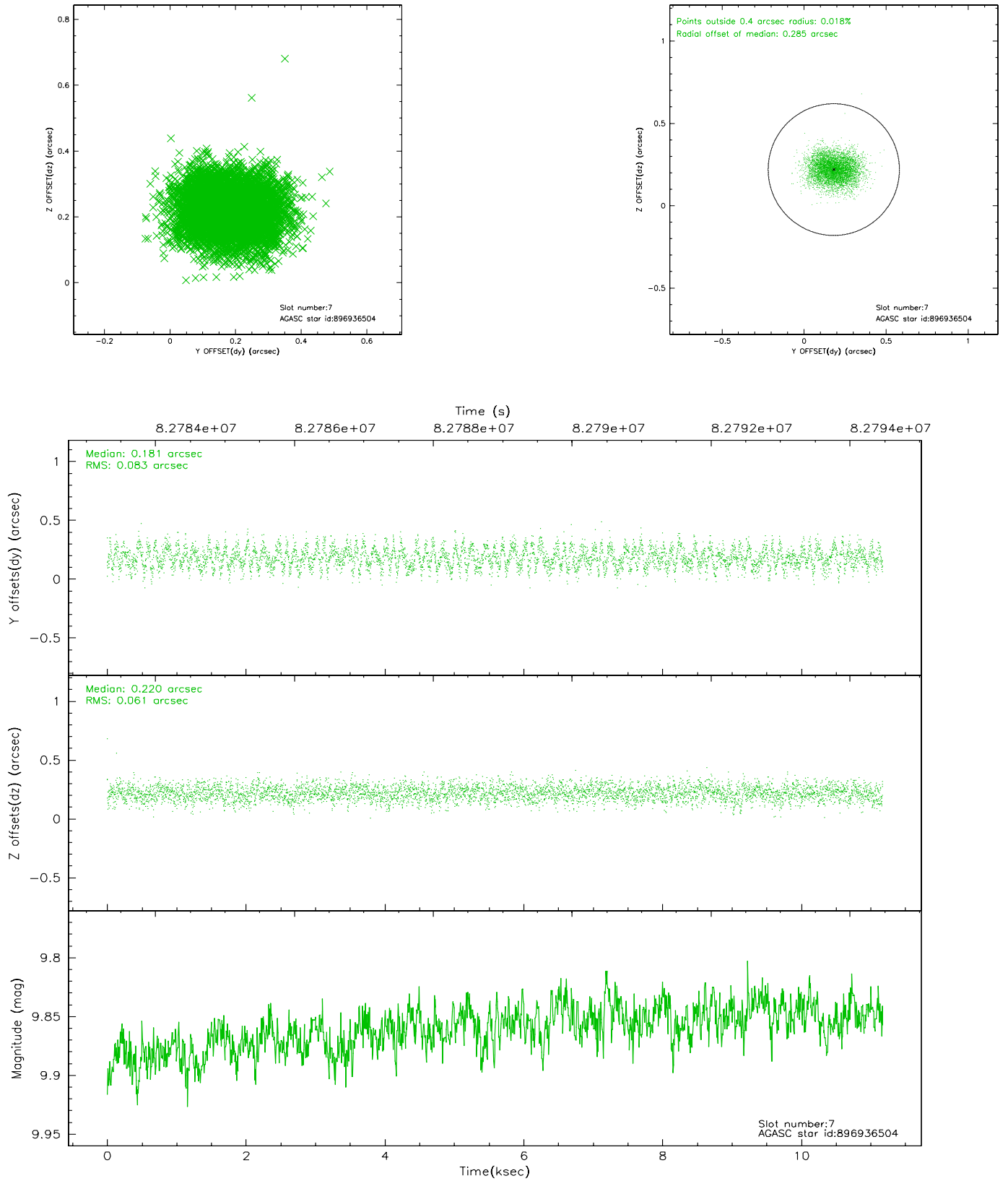
2.4.3 Slot 5



2.4.4 Slot 6

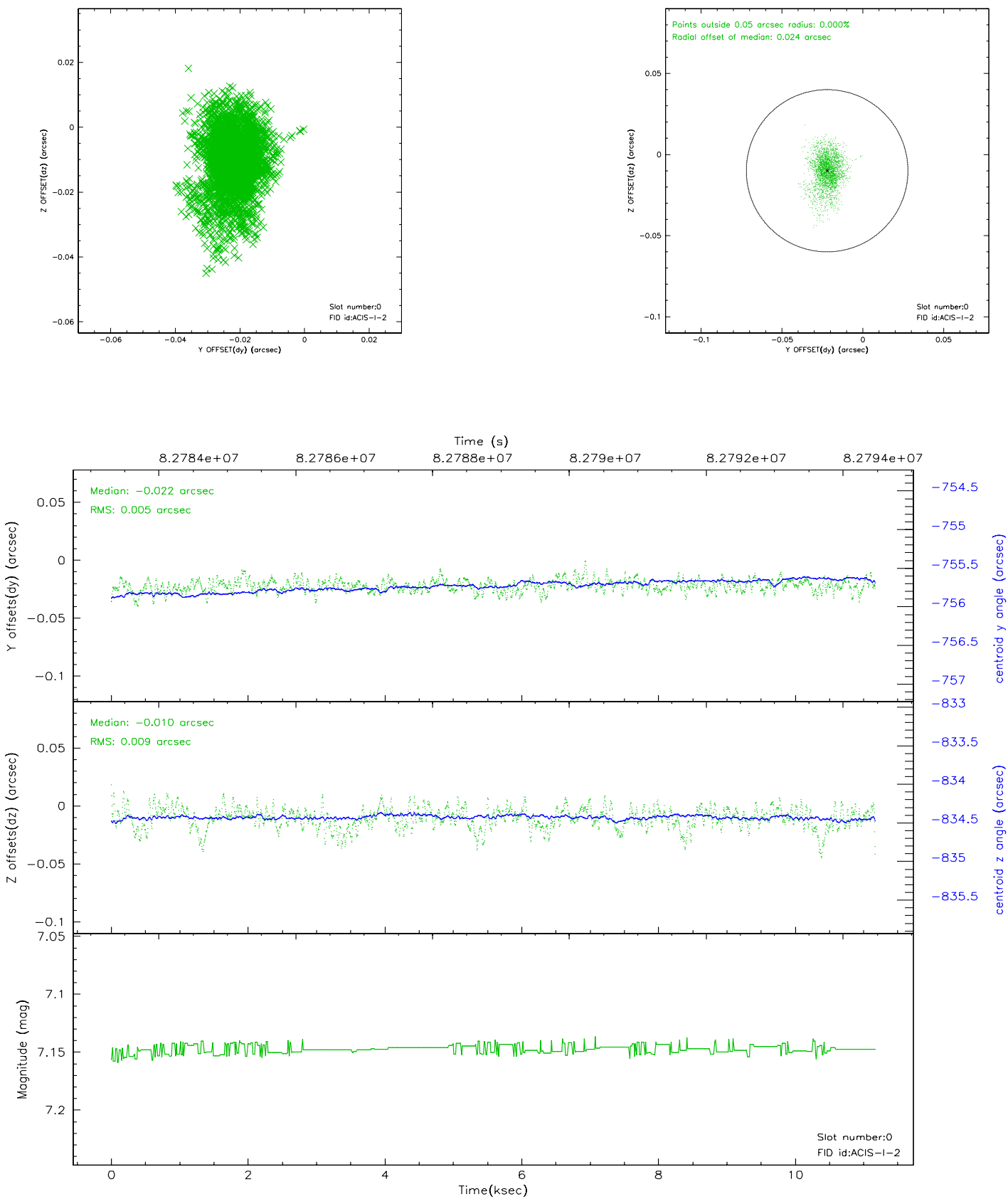


2.4.5 Slot 7

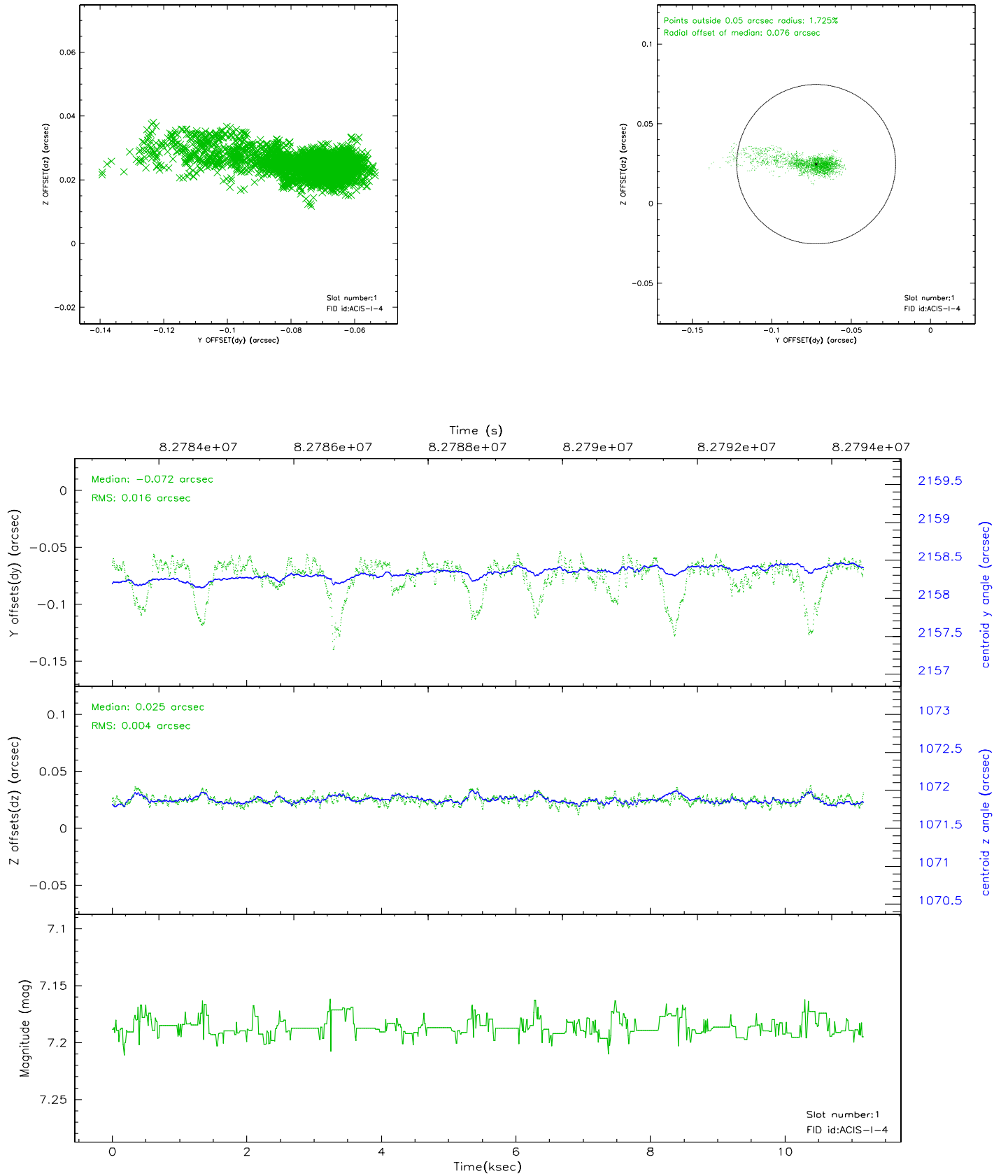


2.5 FID Slots

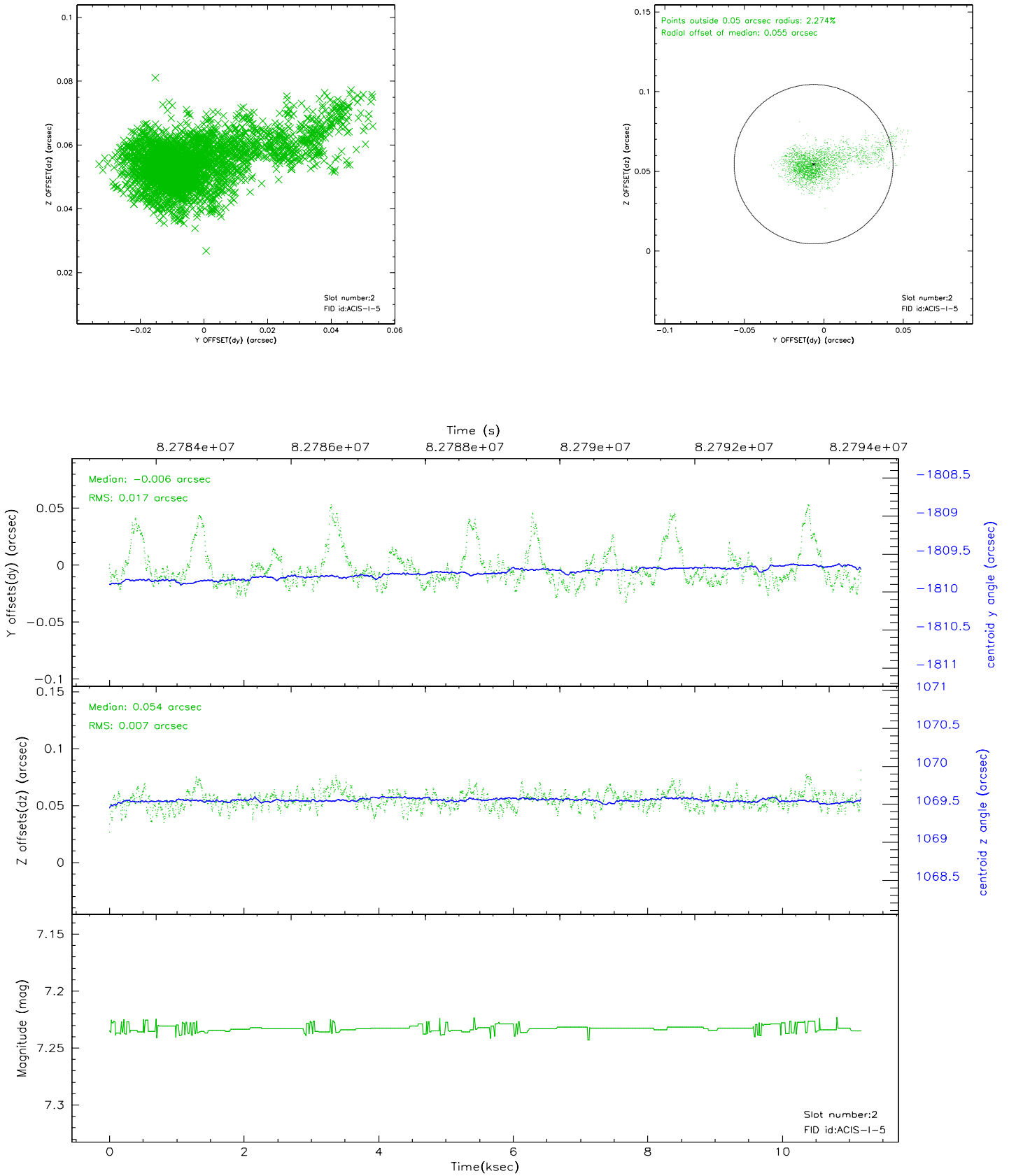
2.5.1 Slot 0



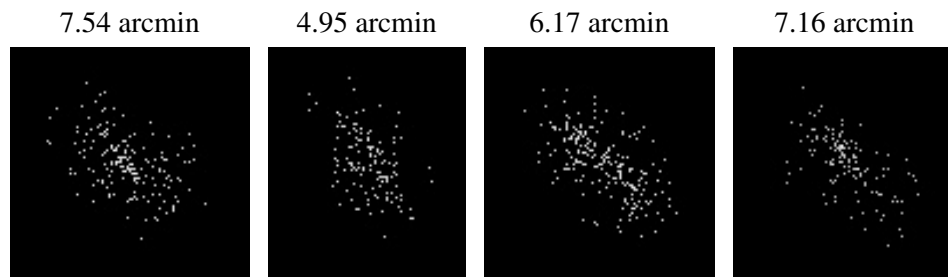
2.5.2 Slot 1



2.5.3 Slot 2



3 Point Sources



A Summary

A.1 Status

V&V Scientist	Jen Lauer
V&V Date (YYYY-MM-DD)	2007.06.05
V&V Edition	1
V&V Disposition and Status	OK
V&V Charge Time	9.82

A.2 Comments

Roll constraint: requested 261+/-4, actual roll delivered = 265.21;
judged to be inconsequential to science image shows point source + faint
diffuse 'tail'