

V&V Reference Report

L2 ASCDS Version : 8.1.2

Observation 726 - L2 Version 4

Chandra X-Ray Center

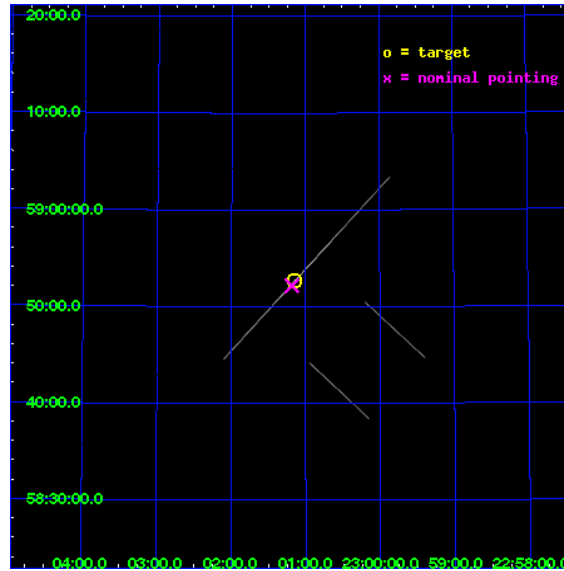
L2 Processing Date : Dec 2 2009

Contents

1	Front	2
2	OBI	3
2.1	OBI	3
2.1.1	Images	3
2.1.2	Bias	3
2.1.3	Parameters	4
2.1.4	Events	4
2.2	Compared Parameters	5
2.3	Aspect	6
2.4	Star Slots	9
2.4.1	Slot 3	9
2.4.2	Slot 4	10
2.4.3	Slot 5	11
2.4.4	Slot 6	12
2.4.5	Slot 7	13
2.5	FID Slots	14
2.5.1	Slot 0	14
2.5.2	Slot 1	15
2.5.3	Slot 2	16
A	Summary	17
A.1	Status	17
A.2	Comments	17

1 Front

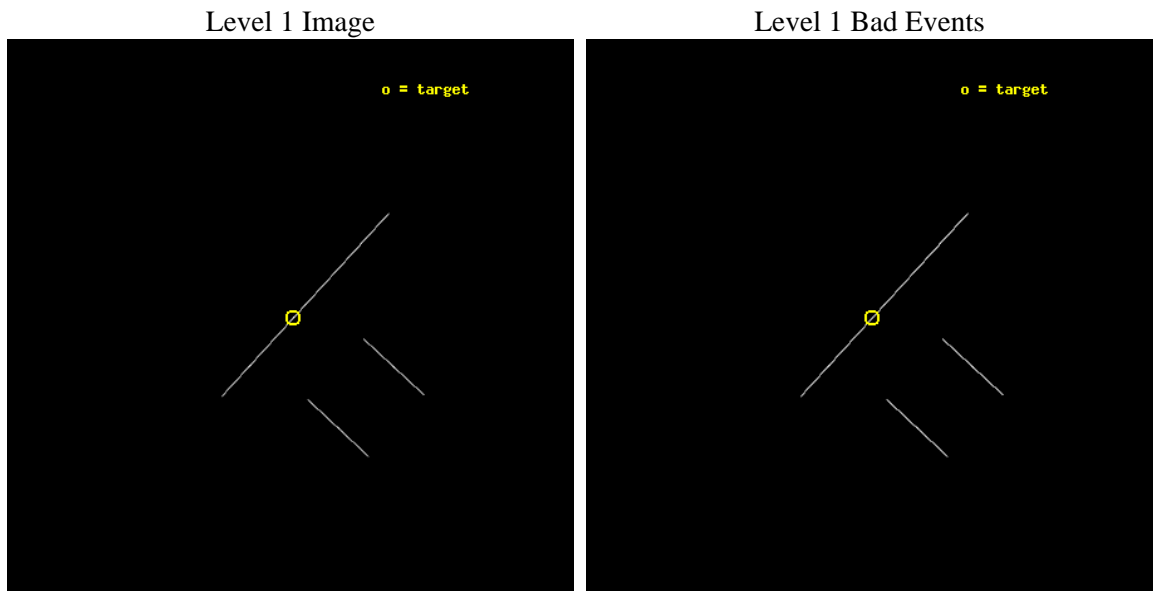
seq_num	500022	Sequence number
obs_id	726	Observation id
title	A STUDY OF ANOMALOUS X-RAY PULSARS	Proposal title
observer	Dr. Chryssa Kouveliotou	Principal investigator
object	1E 2259+586	Source name
ra_targ	345.285833	Observer's specified target RA
dec_targ	58.878056	Observer's specified target Dec
ra_nom	345.29624341986	Nominal RA
dec_nom	58.869377117748	Nominal Dec
roll_nom	312.65710180174	Nominal Roll
revision	4	Processing version of data
ontime	12174.0	Sum of GTIs [s]
livetime	12126.4453125	Livetime [s]
ontime2	12174.0	Sum of GTIs [s]
ontime3	12174.0	Sum of GTIs [s]
ontime6	12174.0	Sum of GTIs [s]
ontime7	12174.0	Sum of GTIs [s]
ontime8	12174.0	Sum of GTIs [s]
l2events	252644	Number of level 2 events



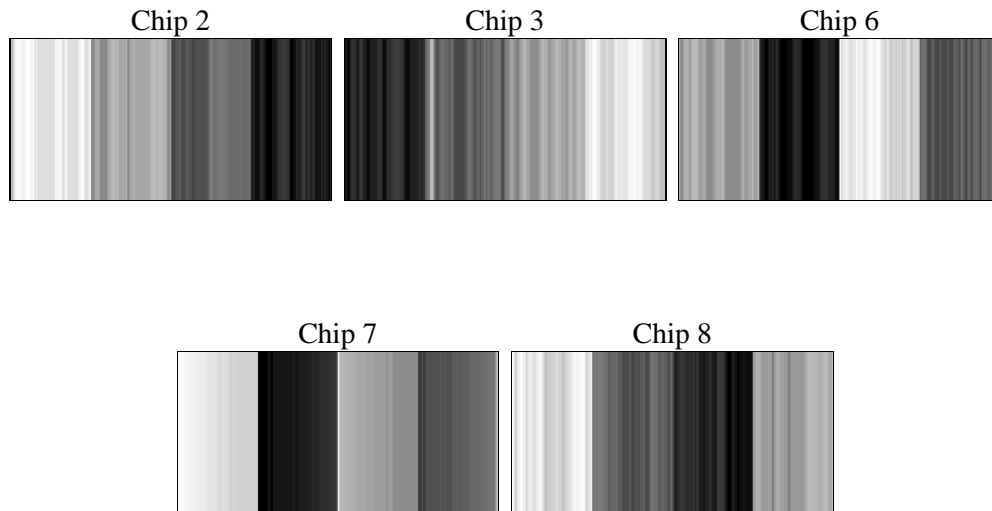
2 OBI

2.1 OBI

2.1.1 Images



2.1.2 Bias



2.1.3 Parameters

obi_num	0	Obi number	sched_exp_time	12000.000000	Scheduled observation exposure time
ascdsver	8.1.2	ASCDS version number	ontime	12174.0	Sum of GTIs [s]
caldbver	4.1.4	 	ontime2	12174.0	Sum of GTIs [s]
date	2009-12-02T10:32:12	Date and time of file creation	ontime3	12174.0	Sum of GTIs [s]
revision	4	Processing version of data	ontime6	12174.0	Sum of GTIs [s]
			ontime7	12174.0	Sum of GTIs [s]
			ontime8	12174.0	Sum of GTIs [s]
			l1events	1083017	Number of level 1 events

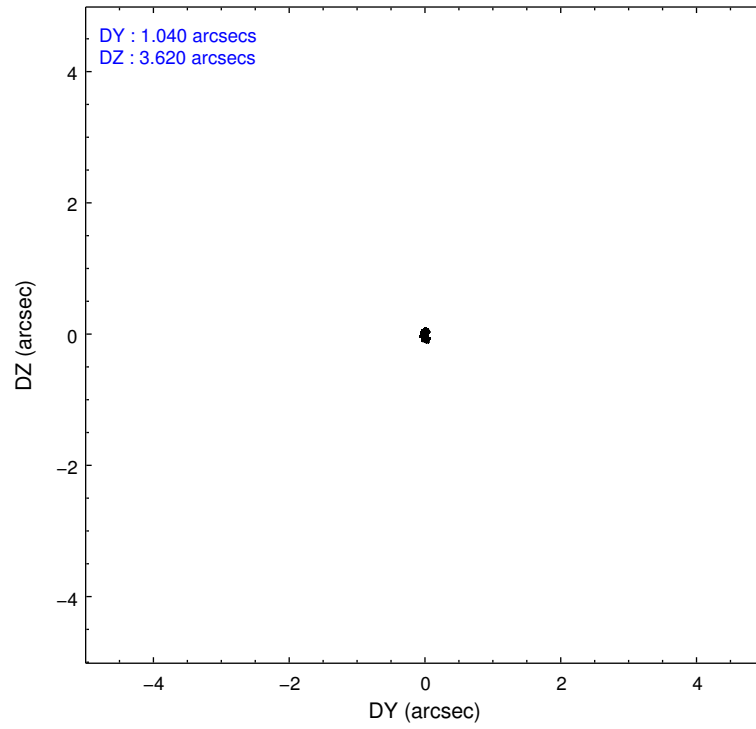
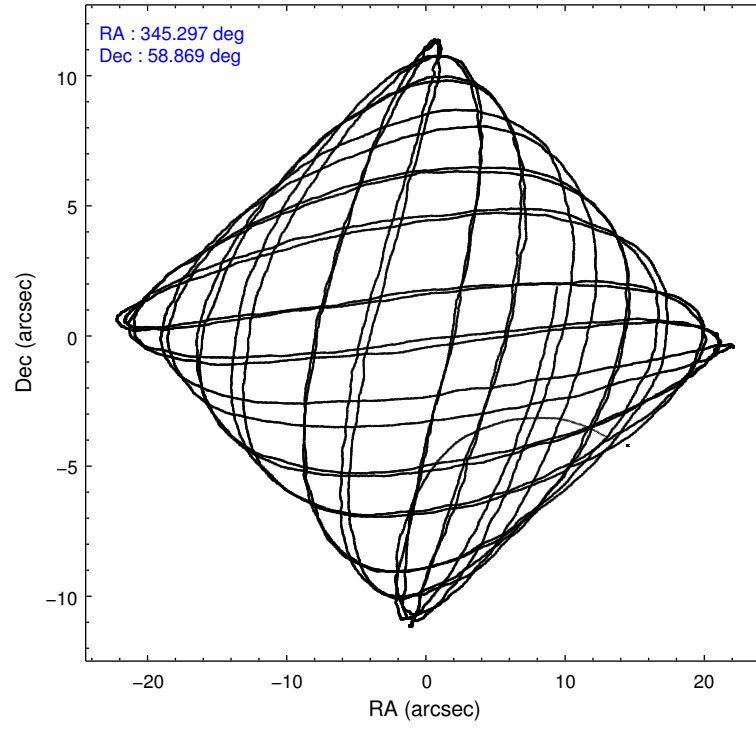
2.1.4 Events

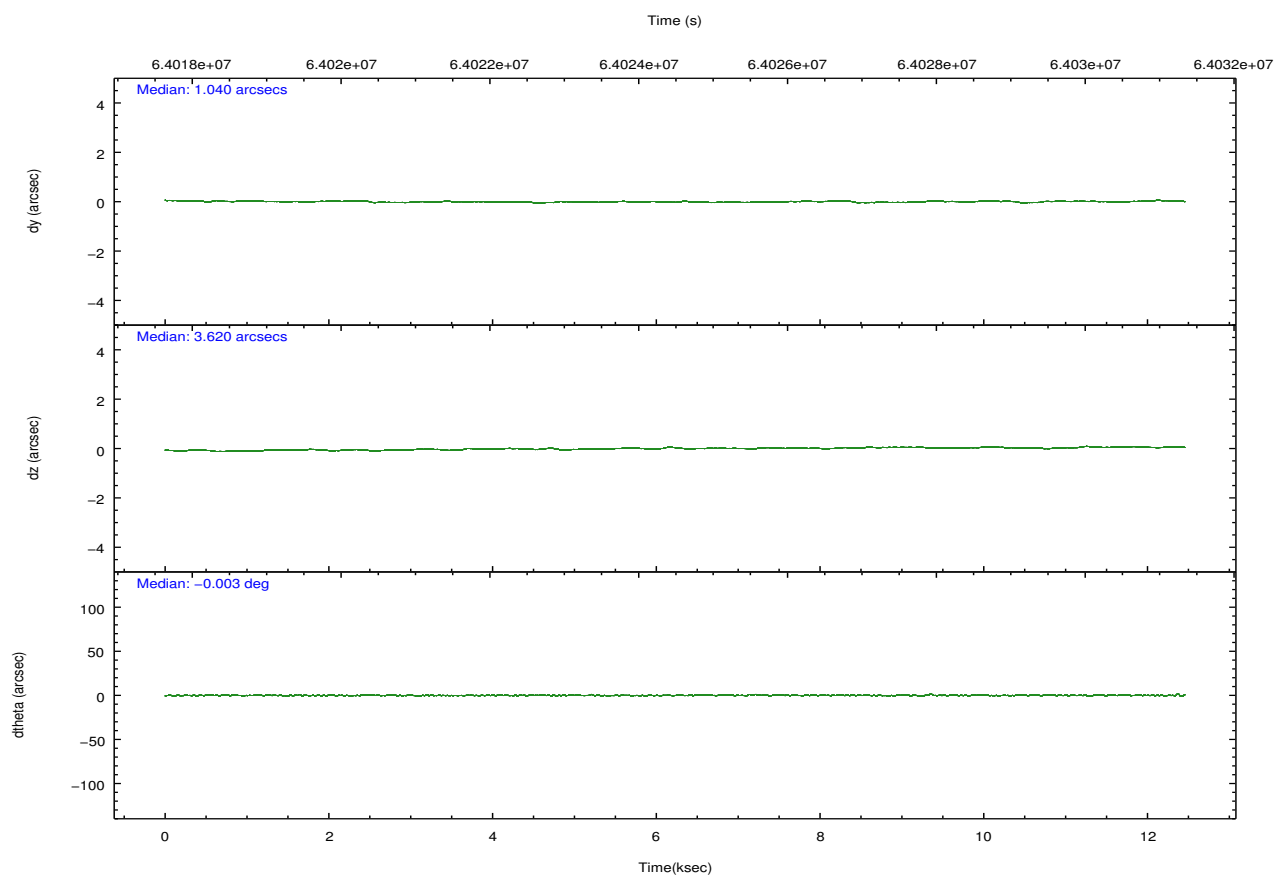
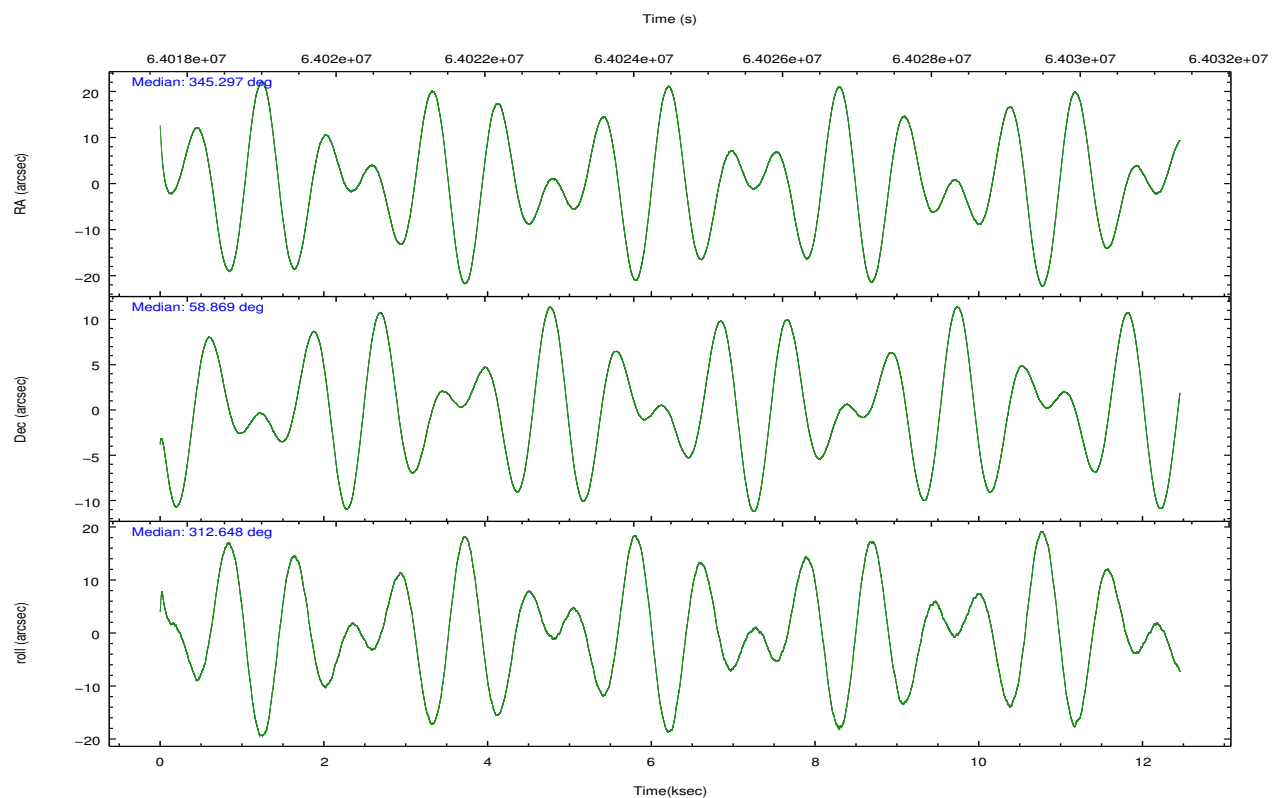
	ccd 2	ccd 3	ccd 6	ccd 7	ccd 8		ccd 2	ccd 3	ccd 6	ccd 7	ccd 8
level 1 events	191424	179576	182473	283132	246412	grade 0 events	4755	2233	6255	33396	7179
rejected events	170042	161460	147235	120127	213348		2%	1%	3%	11%	2%
rejected %	88%	89%	80%	42%	86%	grade 1 events	52	54	62	307	130
							0%	0%	0%	0%	0%
						grade 2 events	8270	6875	19483	40419	11073
							4%	3%	10%	14%	4%
						grade 3 events	2635	3065	2655	17707	3836
							1%	1%	1%	6%	1%
						grade 4 events	2605	2631	2708	15712	3815
							1%	1%	1%	5%	1%
						grade 5 events	2782	2994	3337	10460	4566
							1%	1%	1%	3%	1%
						grade 6 events	3122	3317	4140	55819	7163
							1%	1%	2%	19%	2%
						grade 7 events	167203	158407	143833	109312	208650
							87%	88%	78%	38%	84%

2.2 Compared Parameters

Parameter	Planned	Actual	Parameter	Planned	Actual
Instrument	ACIS	ACIS	Obspar format version number	6	6
Detector	ACIS-23678	ACIS-23678	Obspar file type	PREDICTED	ACTUAL
Grating	NONE	NONE	Obspar update status	NONE	UPDATED
Data mode	CC33_FAINT	CC33_FAINT	Number of optional ACIS chips dropped	0	0
Observation mode	POINTING	POINTING	On-chip summing requested	N	N
Pointing RA	345.245406	345.2962434198637	Subarray requested	NONE	NONE
Pointing Dec	58.877661	58.86937711774762	Alternating exposures requested	N	N
Pointing Roll	312.543984	312.6571018017418	Primary exposure time	0.000000	0
SIM focus pos (mm)	-0.684267	-0.6828225247311905			
SIM defocus (mm)	0	0.001444936568705701			
SIM translation stage pos (mm)	-190.132523	-190.1400660498719			
SIM translation stage offset (mm)	0	0.00754346686406393			
Observation start time	64018718.184000	64017586.582196			
Observation start date	2000-01-11T22:57:34	2000-01-11T22:39:46			
Observation end time	64030718.184000	64030852.132678			
Observation end date	2000-01-12T02:17:34	2000-01-12T02:20:52			
Read mode	CONTINUOUS	CONTINUOUS			

2.3 Aspect



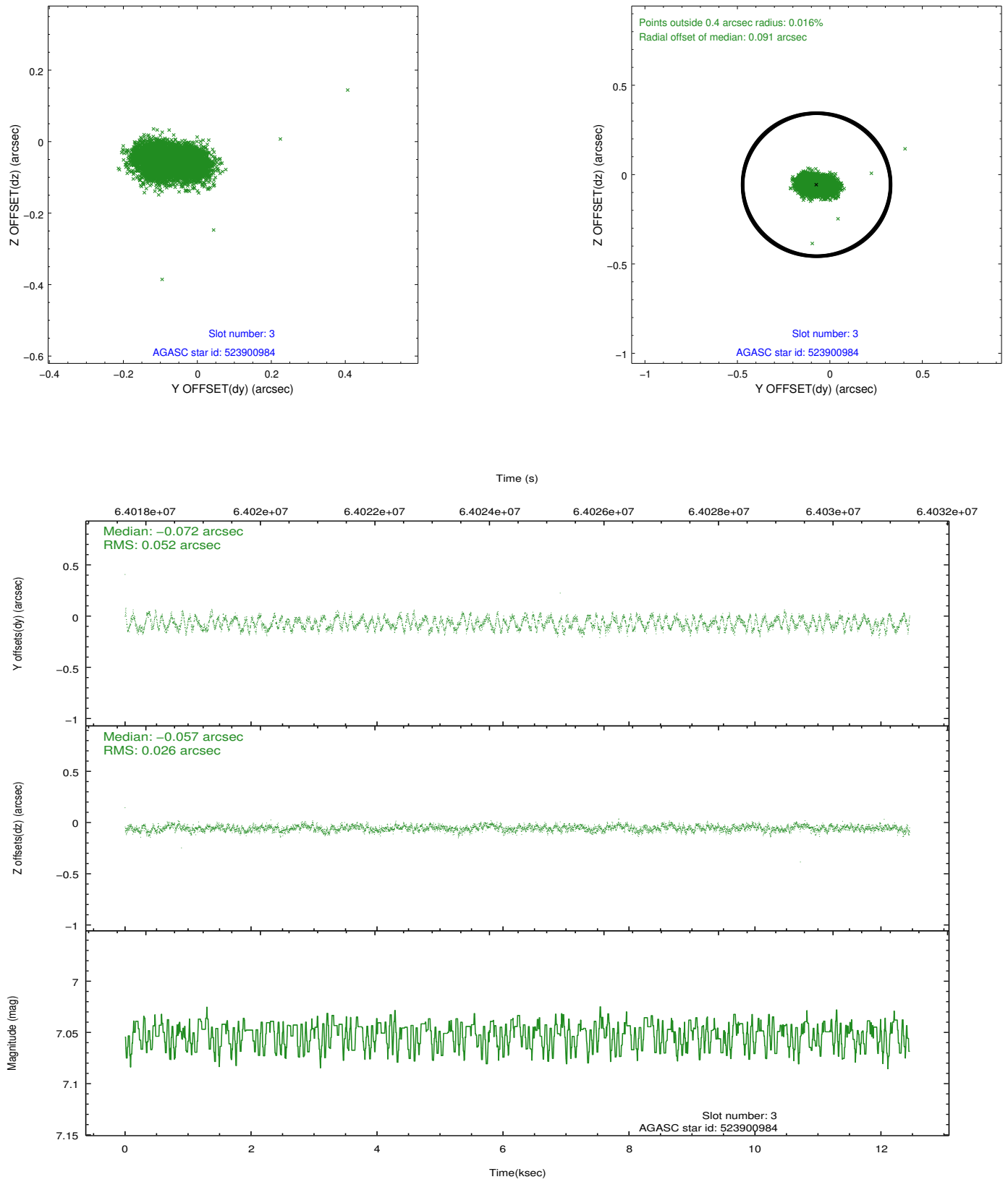


Slot Statistics

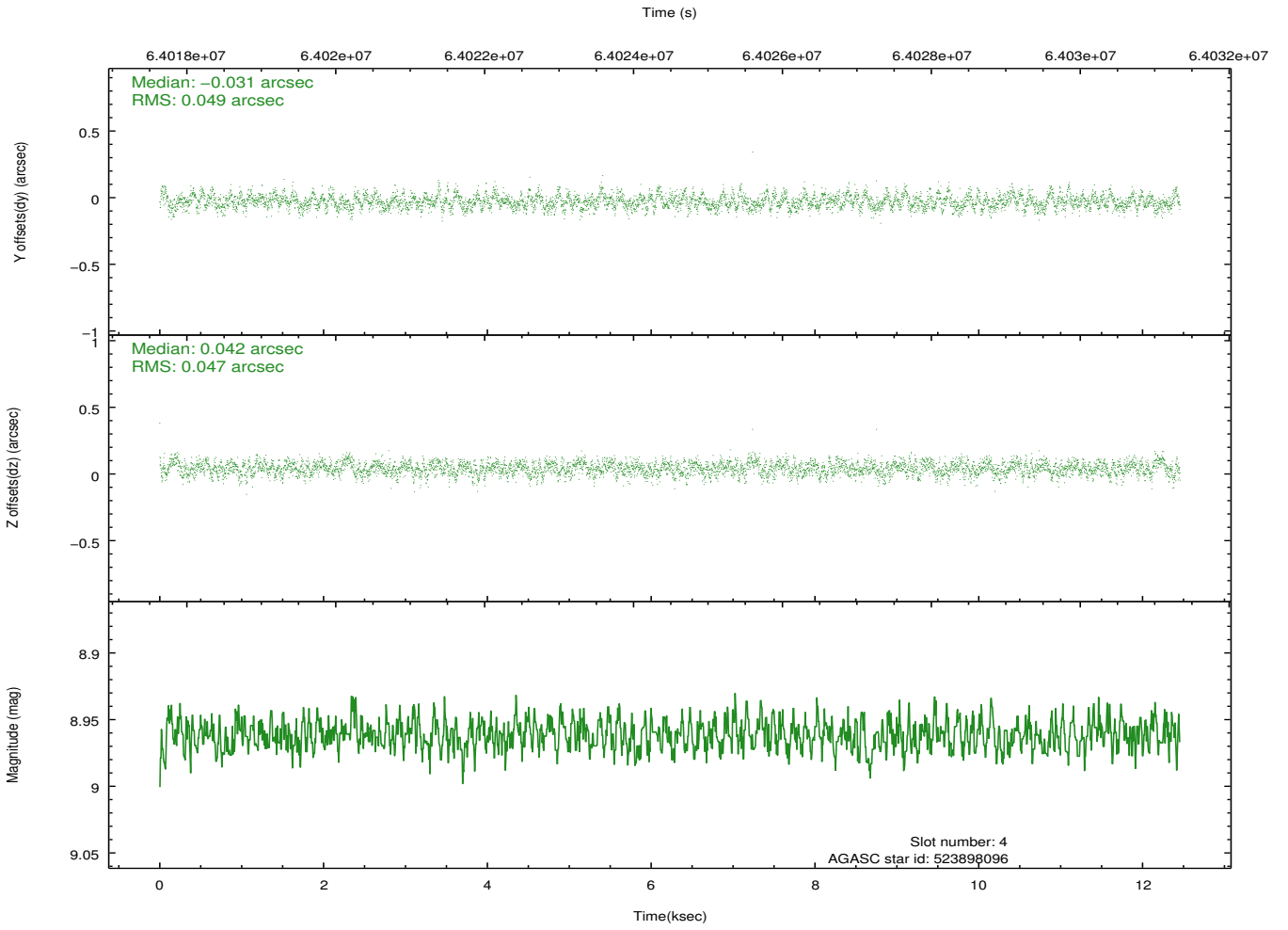
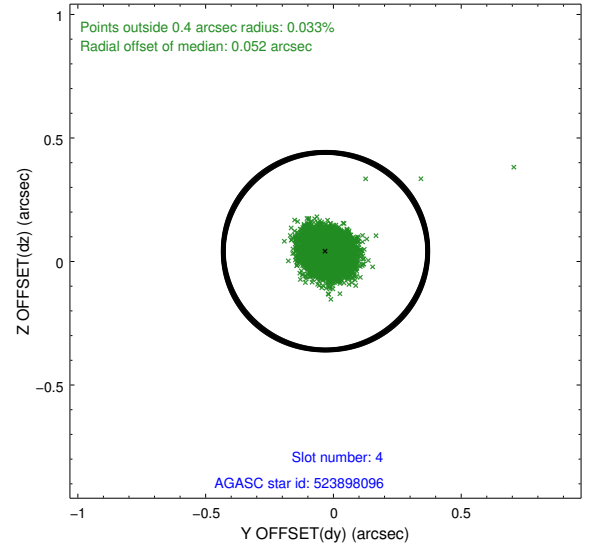
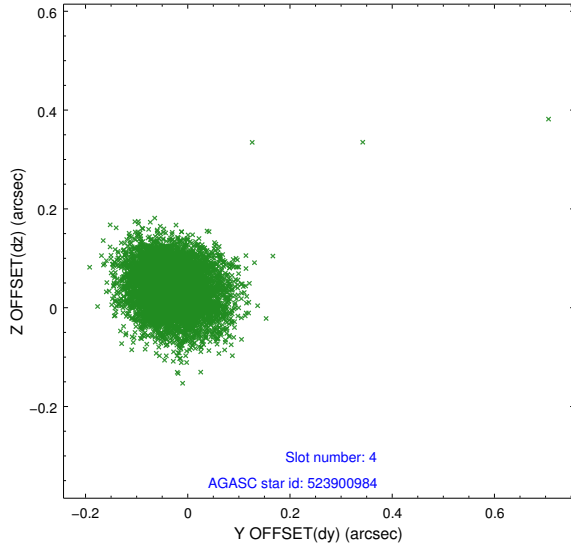
slot	status	id	mag	n_pts	med_dy	med_dz	dr1	dr2	ra	dec	mean_y	mean_z
0	FID	ACIS-S-1	7.20	3039	0.029	0.012	0.007	0.011	0.000000	0.000000	942.35	-1720.35
1	FID	ACIS-S-4	7.21	3039	-0.008	-0.017	0.006	0.010	0.000000	0.000000	2160.02	183.33
2	FID	ACIS-S-5	7.24	3039	-0.047	0.019	0.006	0.011	0.000000	0.000000	-1806.00	177.57
3	GUIDE	523900984	7.05	6078	-0.072	-0.057	0.063	0.096	345.671307	59.557771	-1281.31	2228.65
4	GUIDE	523898096	8.96	6076	-0.031	0.042	0.071	0.115	344.586580	58.320513	630.73	-2269.91
5	GUIDE	523913184	8.70	6076	0.093	-0.022	0.057	0.092	346.255850	58.466726	2365.39	410.33
6	GUIDE	523911376	8.54	6078	-0.013	0.065	0.063	0.102	345.037714	59.619889	-2225.08	1527.69
7	GUIDE	523913080	9.63	6073	0.021	-0.032	0.094	0.152	344.537163	58.464670	188.06	-1983.43

2.4 Star Slots

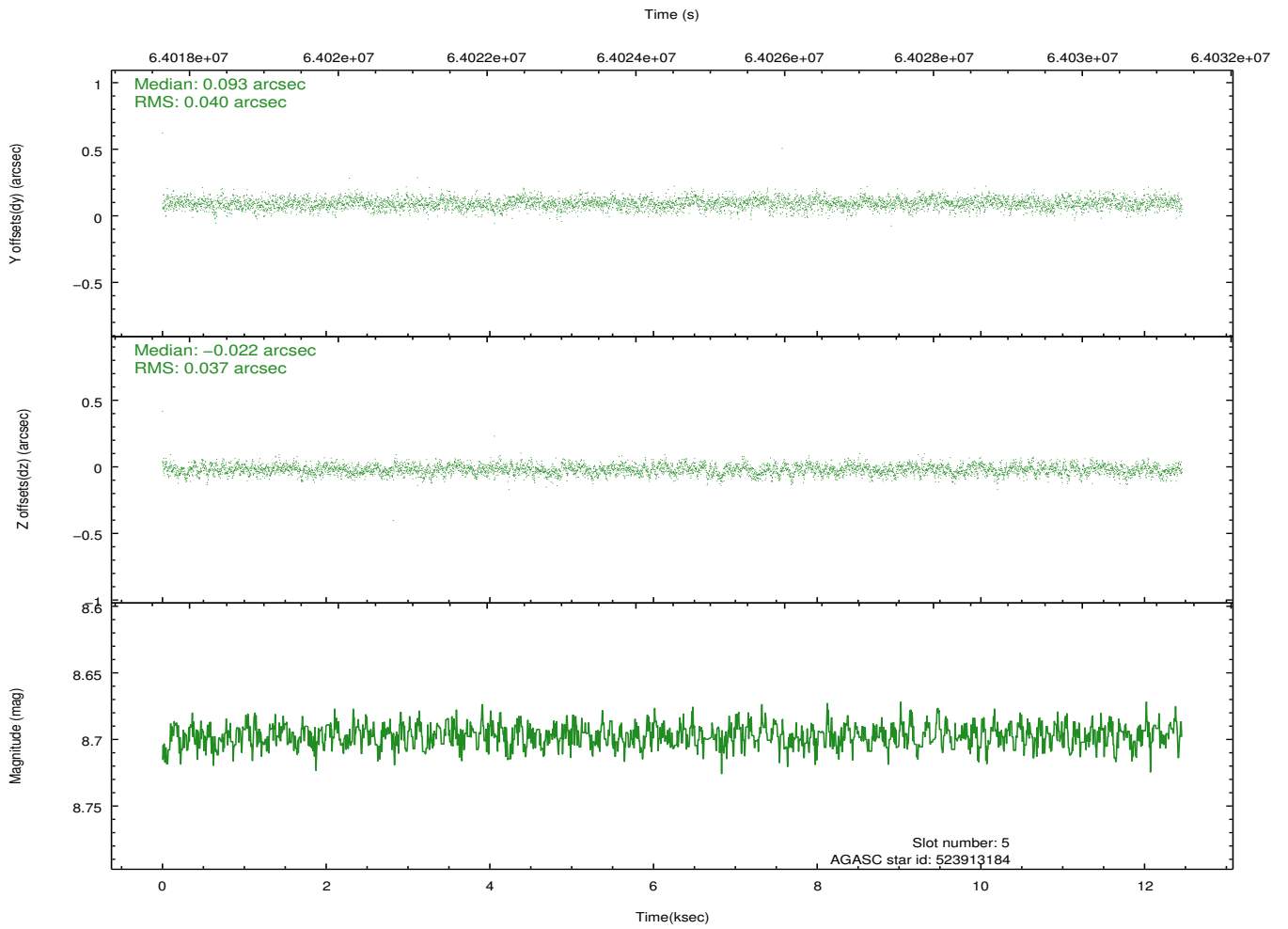
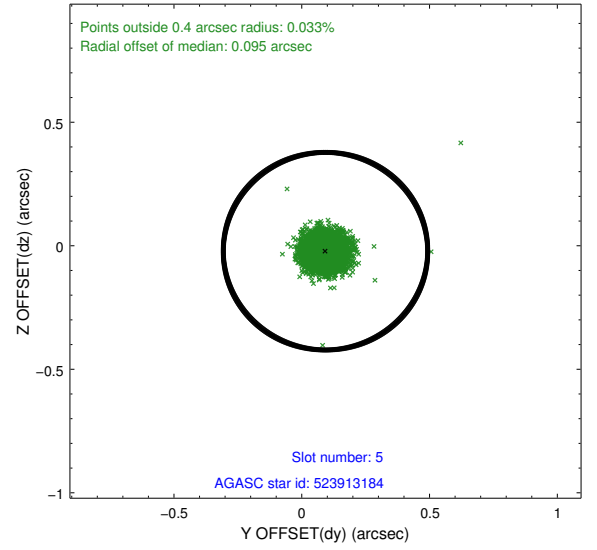
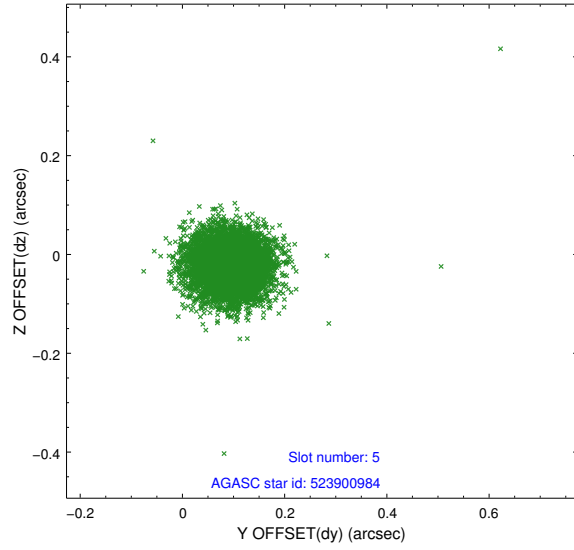
2.4.1 Slot 3



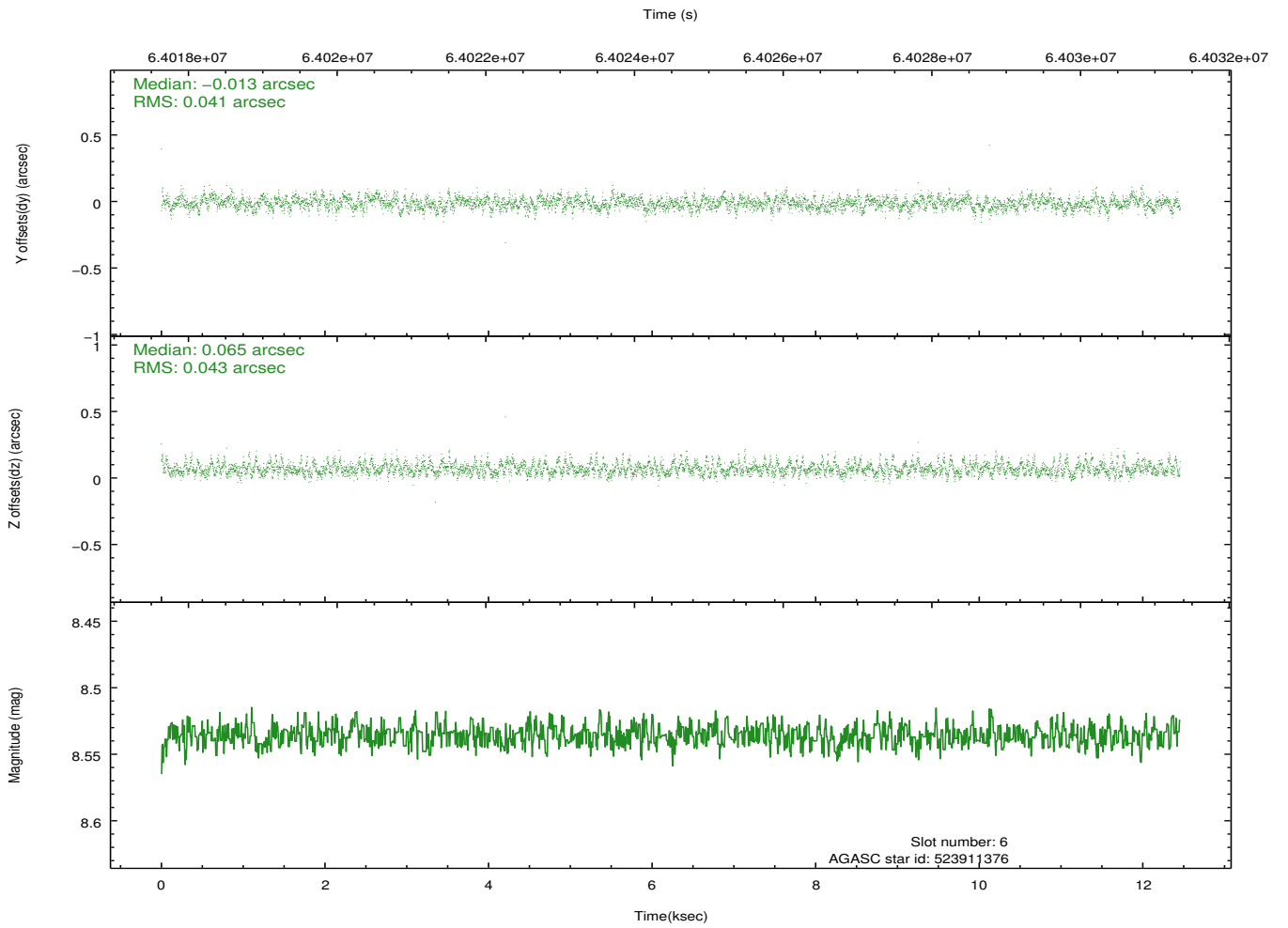
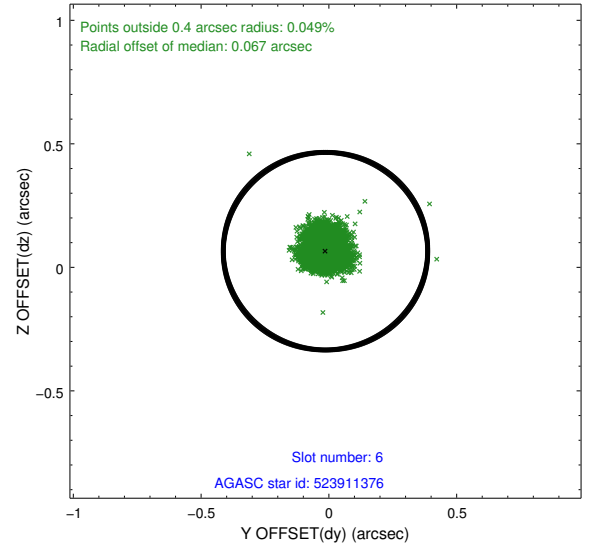
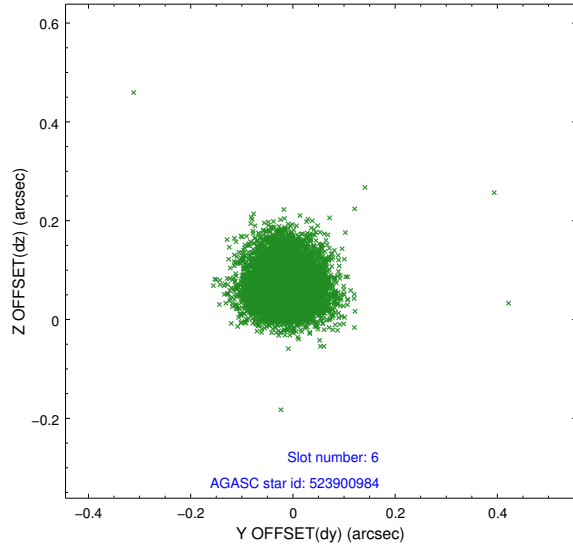
2.4.2 Slot 4



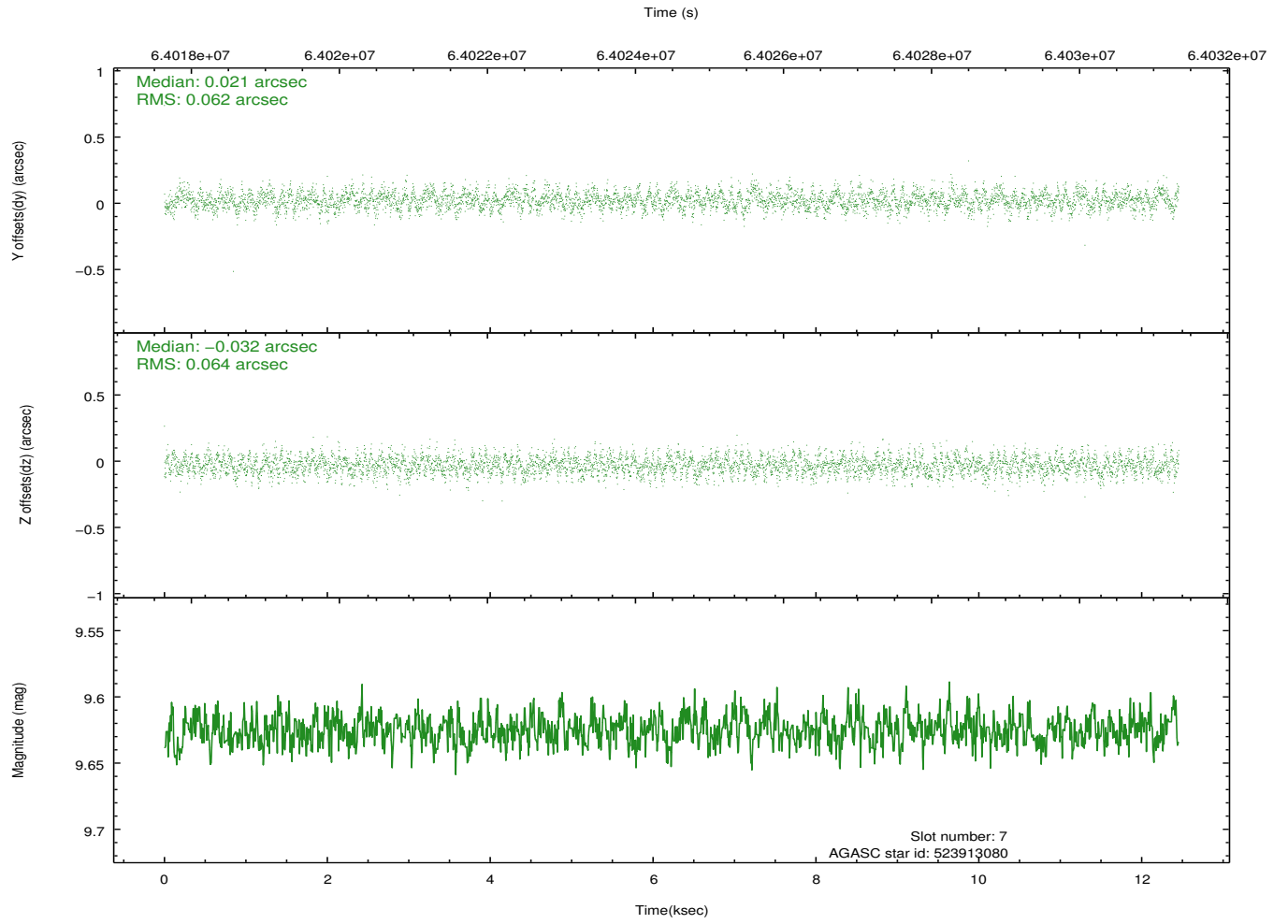
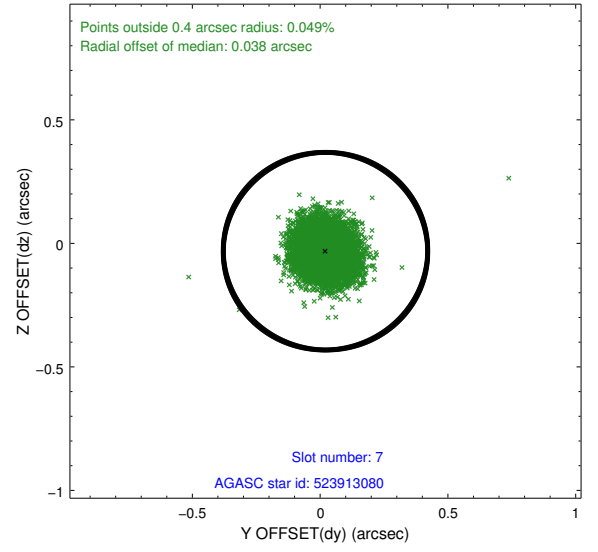
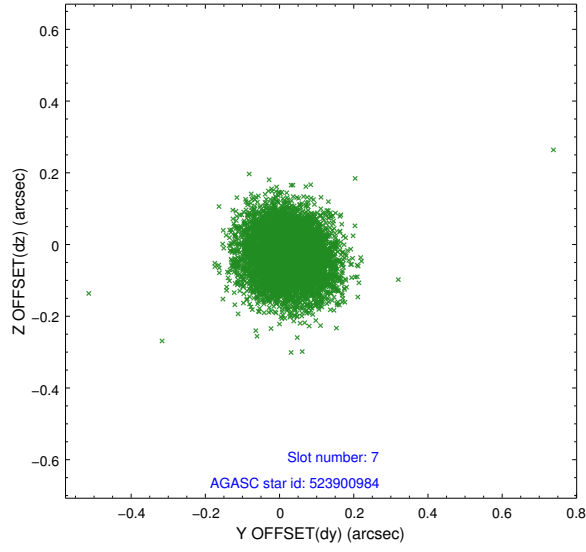
2.4.3 Slot 5



2.4.4 Slot 6

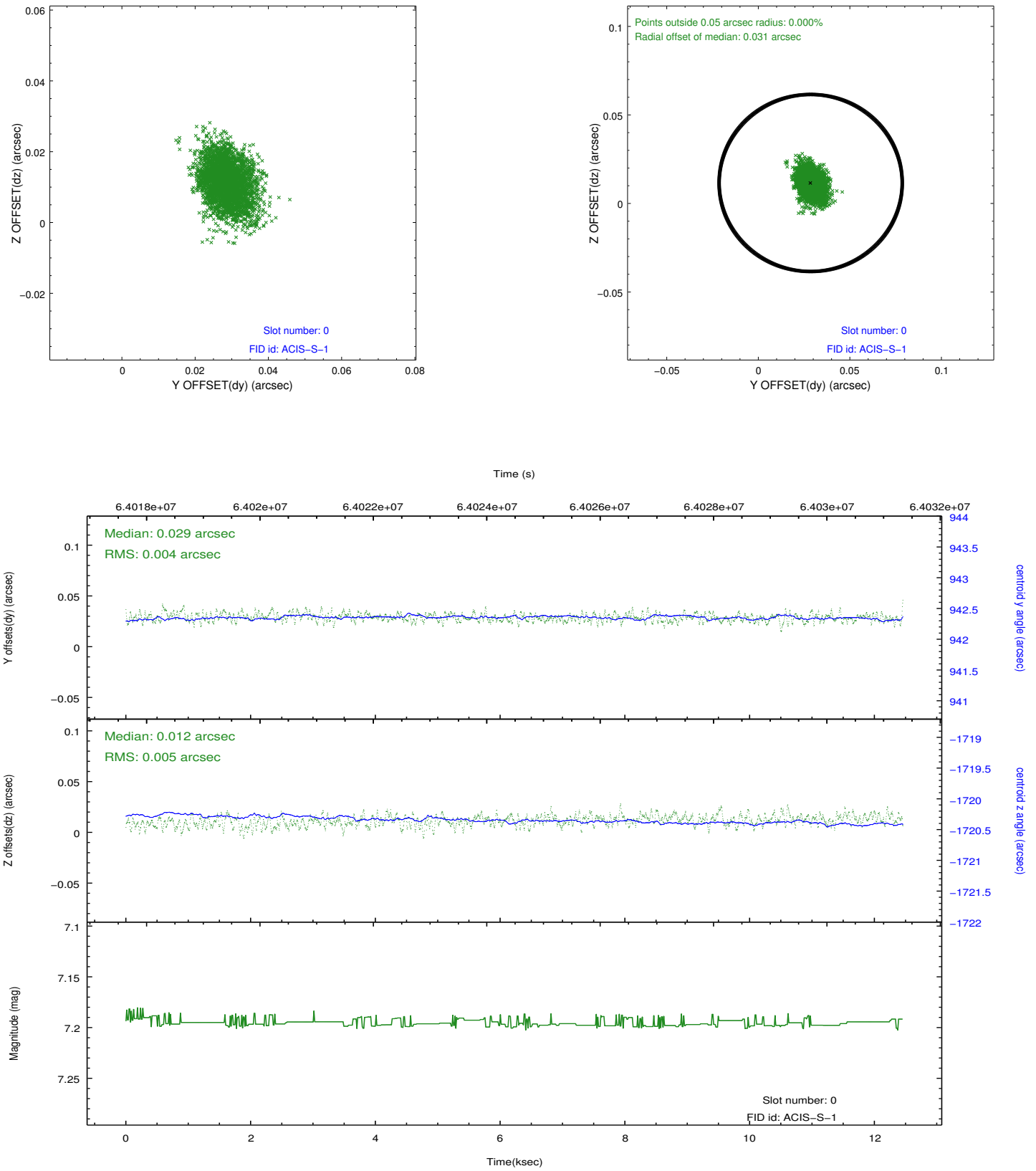


2.4.5 Slot 7

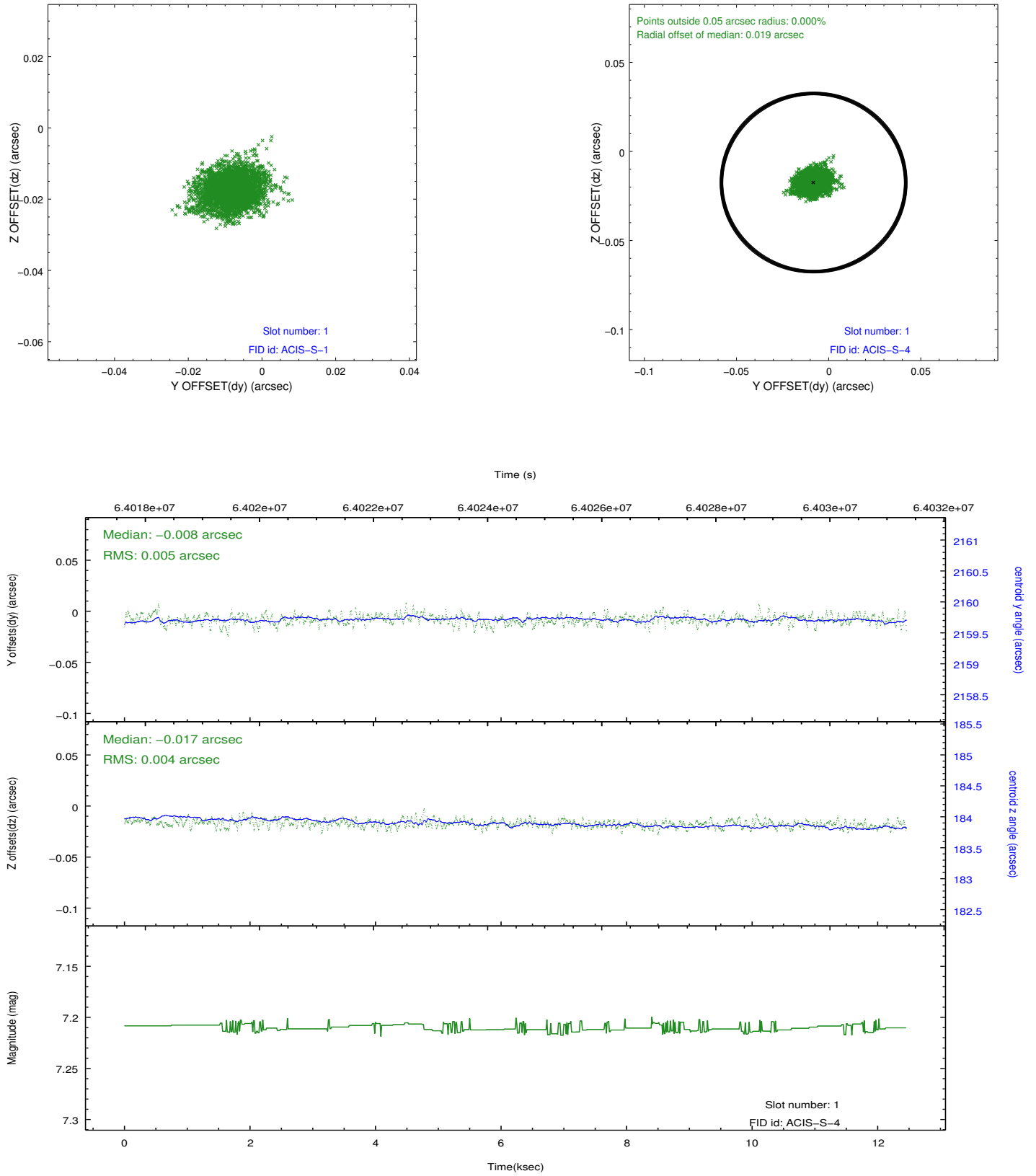


2.5 FID Slots

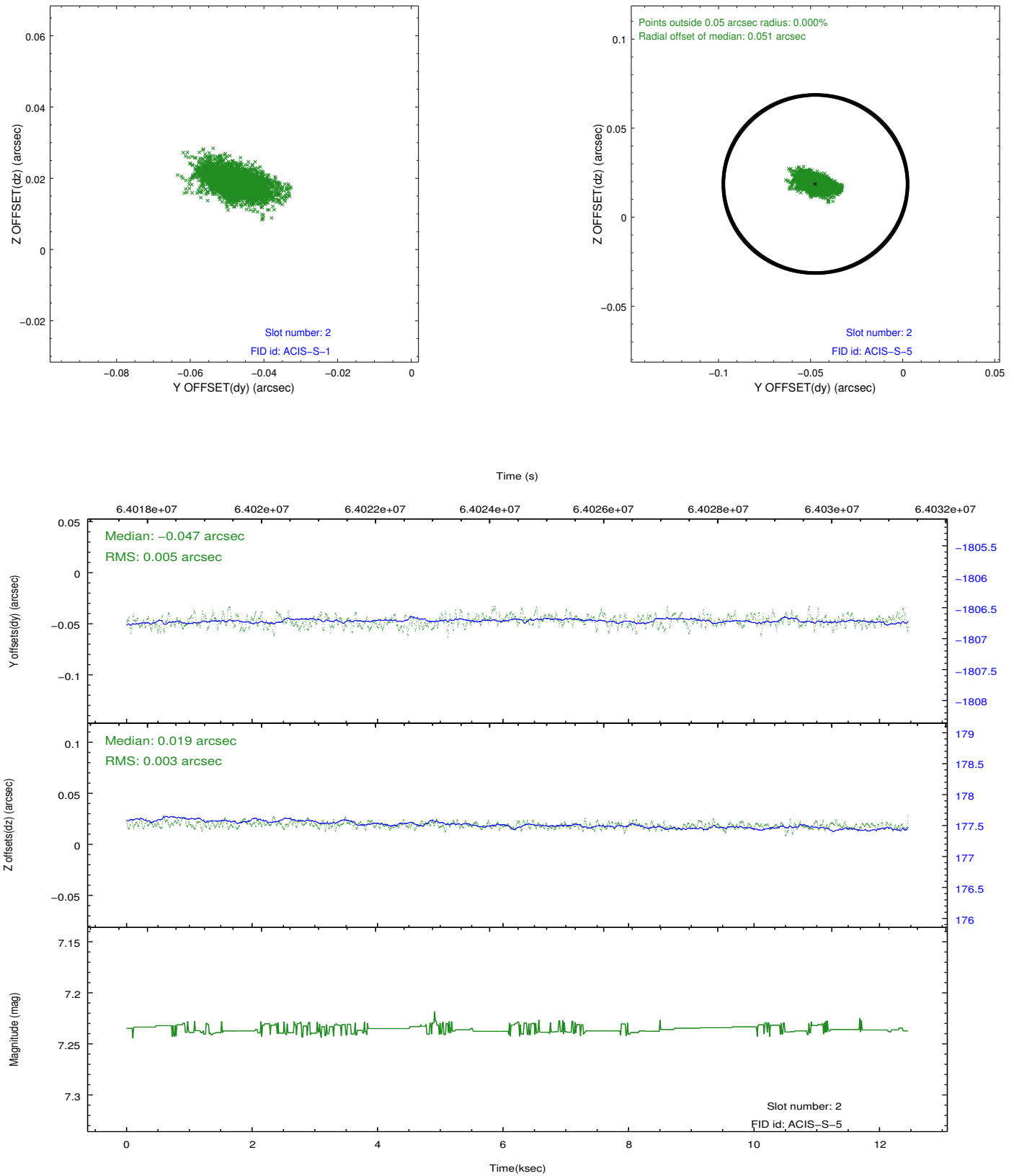
2.5.1 Slot 0



2.5.2 Slot 1



2.5.3 Slot 2



A Summary

A.1 Status

V&V Scientist	Glenn Allen
V&V Date (YYYY-MM-DD)	2009.12.03
V&V Edition	1
V&V Disposition and Status	OK
V&V Charge Time	12.177

A.2 Comments

Some GRADE = 7 events were telemetered because the GRADEMAP used was '000C' instead of the typical continuous-clocking mode GRADEMAP of '000D'. Therefore, GRADE 7 events are expected.