

V&V Reference Report

L2 ASCDS Version : 8.4.5

Observation 369 - L2 Version 5
Chandra X-Ray Center

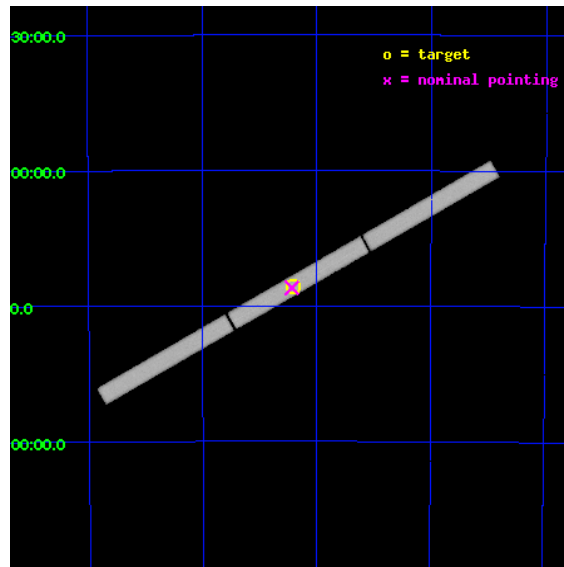
L2 Processing Date : Aug 21 2012

Contents

1	Front	2
2	OBI	3
2.1	OBI	3
2.1.1	Images	3
2.1.2	Parameters	4
2.1.3	Events	4
2.2	Compared Parameters	5
2.3	Aspect	6
2.4	Star Slots	9
2.4.1	Slot 3	9
2.4.2	Slot 4	10
2.4.3	Slot 5	11
2.4.4	Slot 6	12
2.4.5	Slot 7	13
2.5	FID Slots	14
2.5.1	Slot 0	14
2.5.2	Slot 1	15
2.5.3	Slot 2	16
3	Gratings	17
3.1	LETG Arm	17
A	Summary	19
A.1	Status	19
A.2	Comments	19

1 Front

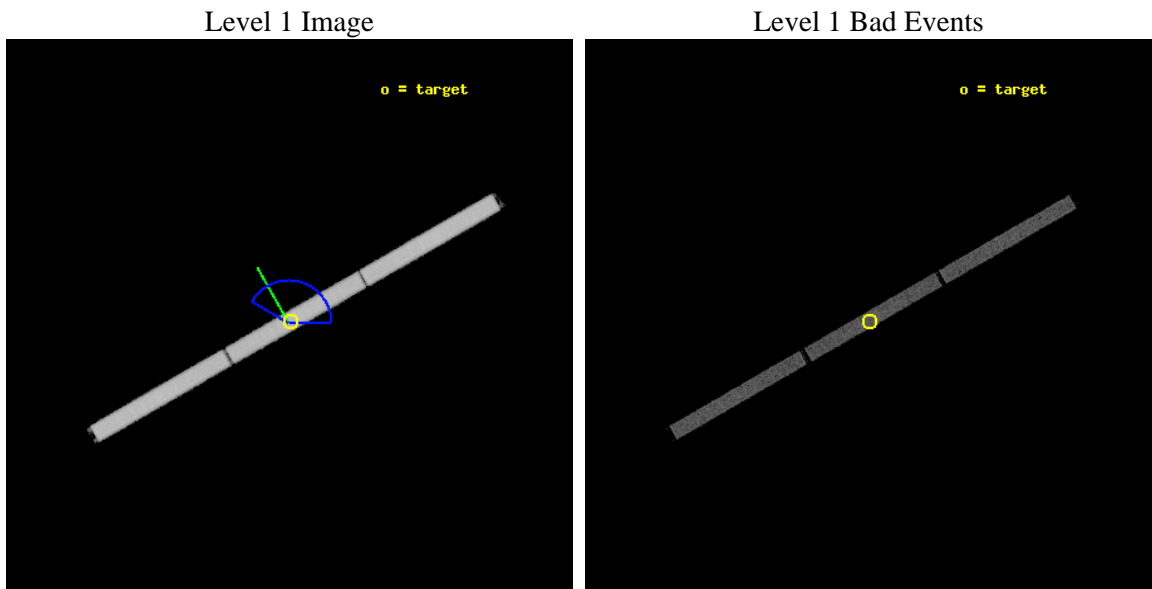
seq_num	500041	Sequence number
obs_id	369	Observation id
title	IS THE NERABY ISOLATED NEUTRON STAR RXJ 0720.4-3125 A MAGNETAR?	Pr
observer	Prof. Shrinivas Kulkarni	Principal investigator
object	RX J0720.4-3125	Source name
ra_targ	110.10375	Observer's specified target RA [deg]
dec_targ	-31.430806	Observer's specified target Dec [deg]
ra_nom	110.10869937657	Nominal RA [deg]
dec_nom	-31.43362515139	Nominal Dec [deg]
roll_nom	330.17203184735	Nominal Roll [deg]
revision	5	Processing version of data
ontime	6123.6064729616	[s]
livetime	6080.7436832905	Ontime multiplied by DTCOR
l2events	327472	Number of level 2 events



2 OBI

2.1 OBI

2.1.1 Images



2.1.2 Parameters

obi_num	0	Obi number	sched_exp_time	6000.000000	[s] Scheduled observation exposure time
ascdsver	8.4.5	Processing system revision	ontime	6123.6064729616	[s]
caldbver	4.5.1.1	 	l1events	519583	Number of level 1 events
date	2012-08-22T00:52:44	Date and time of file creation			
revision	5	Processing version of data			

2.1.3 Events

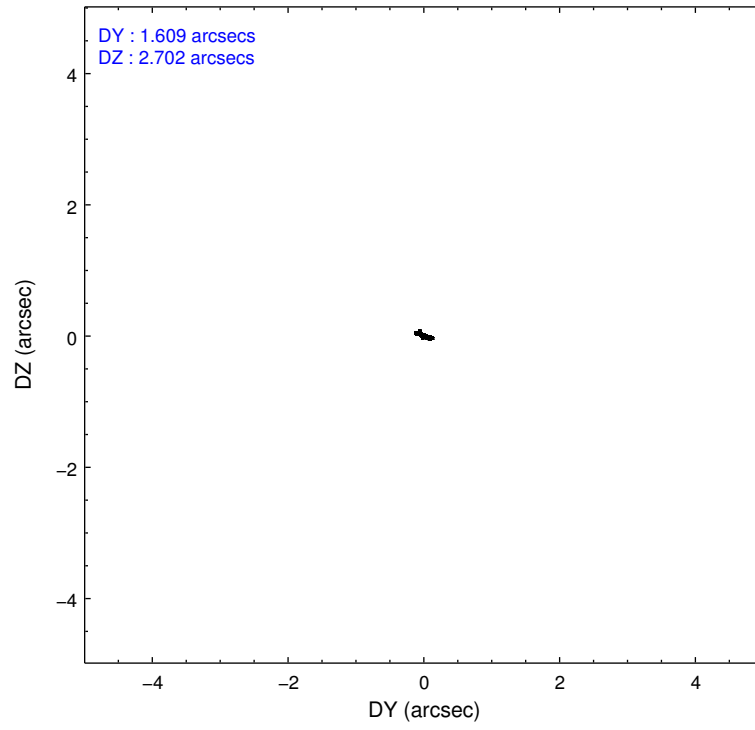
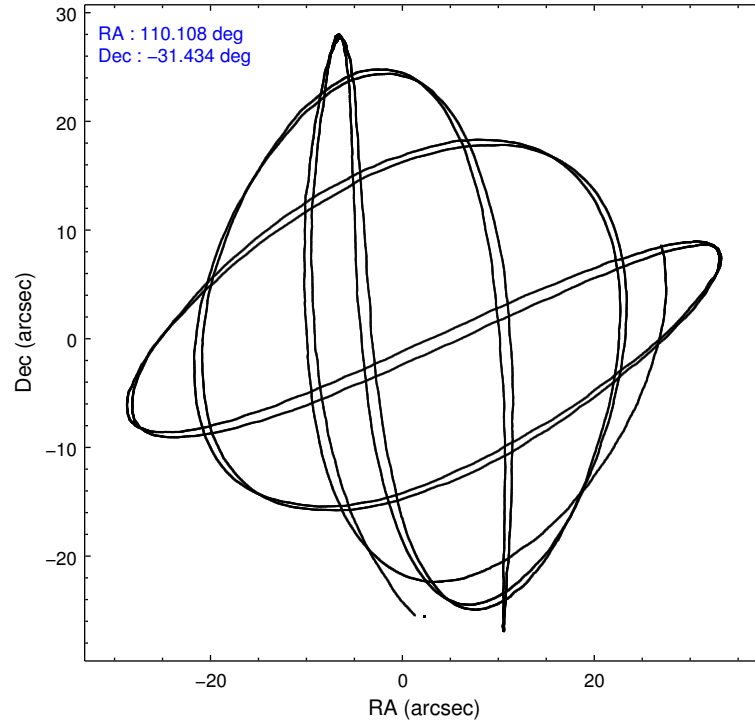
Level 1 Events

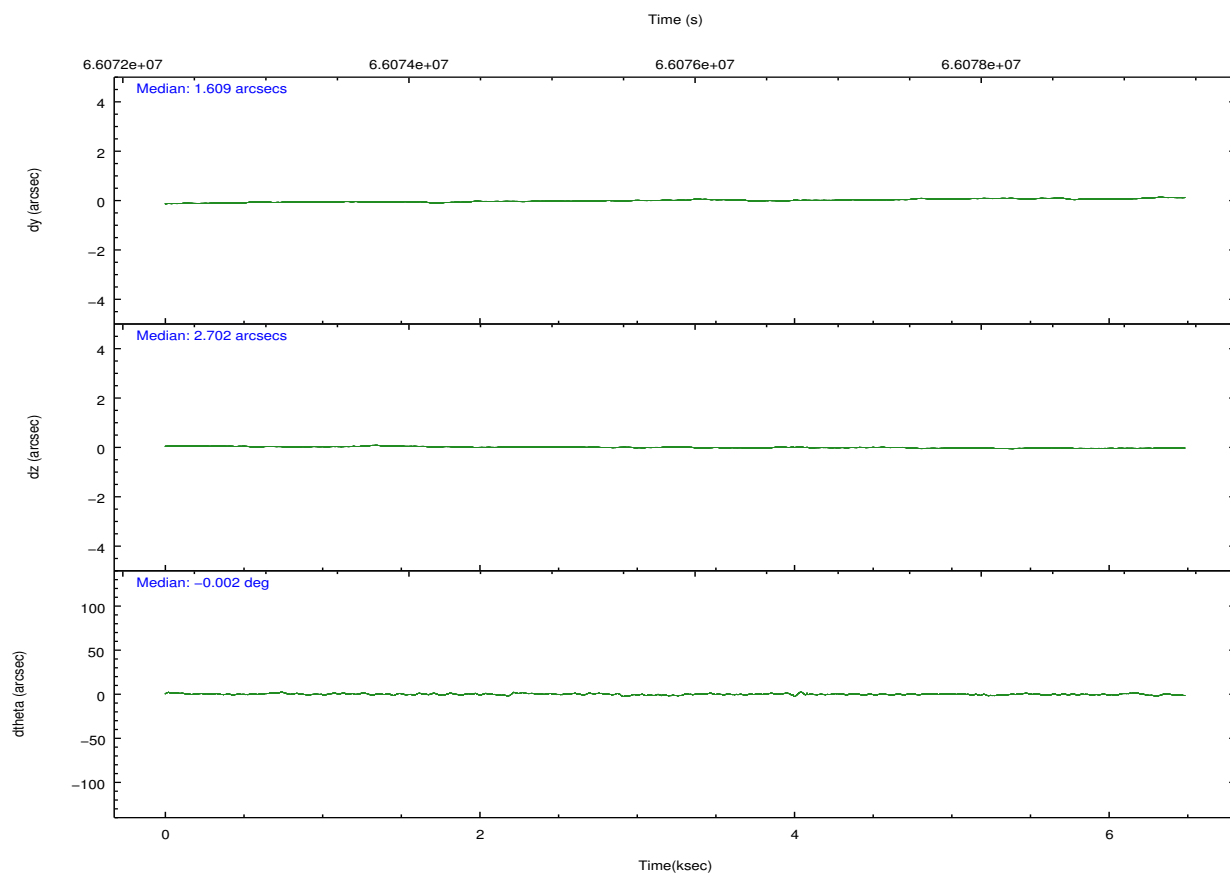
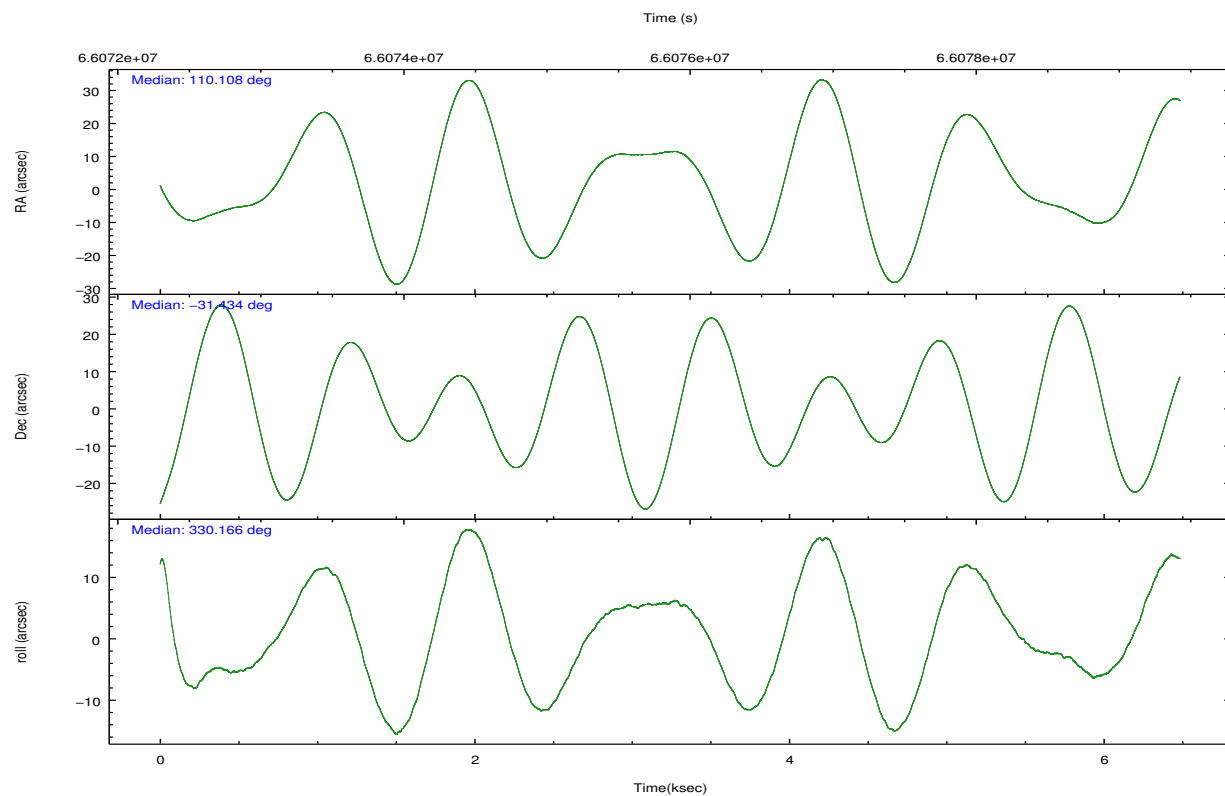
	segment 1	segment 2	segment 3
level 1 events	175674	168929	174980
rejected events	17167	16909	17426
rejected %	9%	10%	9%

2.2 Compared Parameters

Parameter	Planned	Actual	Parameter	Planned	Actual
Instrument	HRC	HRC	Obspar format		
Detector	HRC-S	HRC-S	version number	7	7
Grating	LETG	LETG	Obspar file type	PREDICTED	ACTUAL
Data mode	OBSERVING	OBSERVING	Obspar update status	NONE	UPDATED
Observation mode	POINTING	POINTING			
[deg] Pointing RA	110.074949	110.108699376568			
[deg] Pointing Dec	-31.434749	-31.43362515139047			
[deg] Pointing Roll	330.087076	330.1720318473507			
[deg] Roll angle	15.000000	15.000000			
[deg] Roll tolerance	75.000000	75.000000			
Roll constraint allows 180D rotation	N	N			
[mm] SIM focus pos	-1.429586	-1.428180813131781			
[mm] SIM defocus	0.1037507710433287	0.1051558262725154			
[mm] SIM translation stage pos	250.455976	250.466033080201			
[mm] SIM translation stage offset	0	-0.01005468664627074			
[s] Observation start time (MET)	66073102.184000	66071859.369381			
Observation start date	2000-02-04T17:37:18	2000-02-04T17:17:39			
[s] Observation end time (MET)	66079102.184000	66079749.307169			
Observation end date	2000-02-04T19:17:18	2000-02-04T19:29:09			

2.3 Aspect



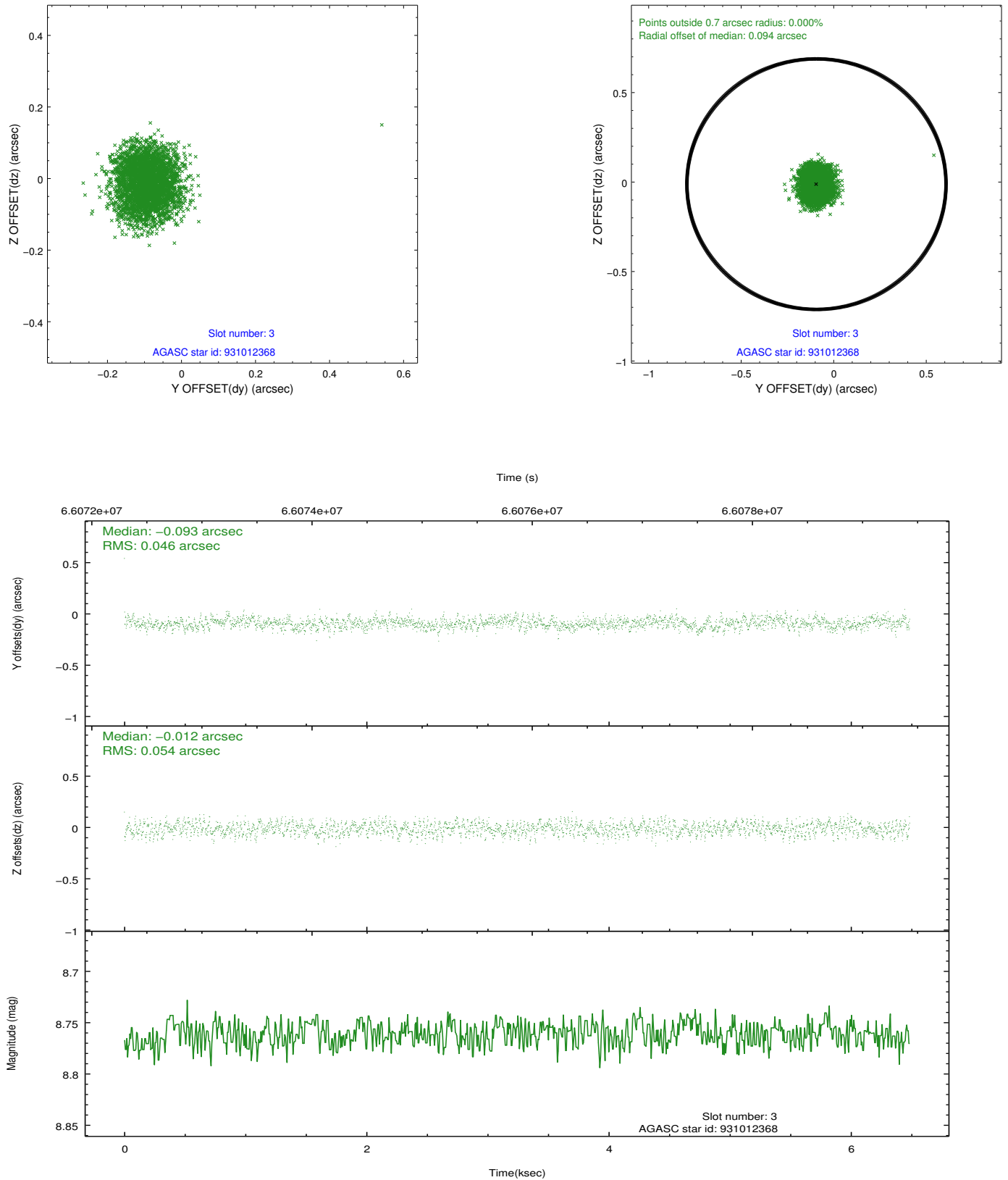


Slot Statistics

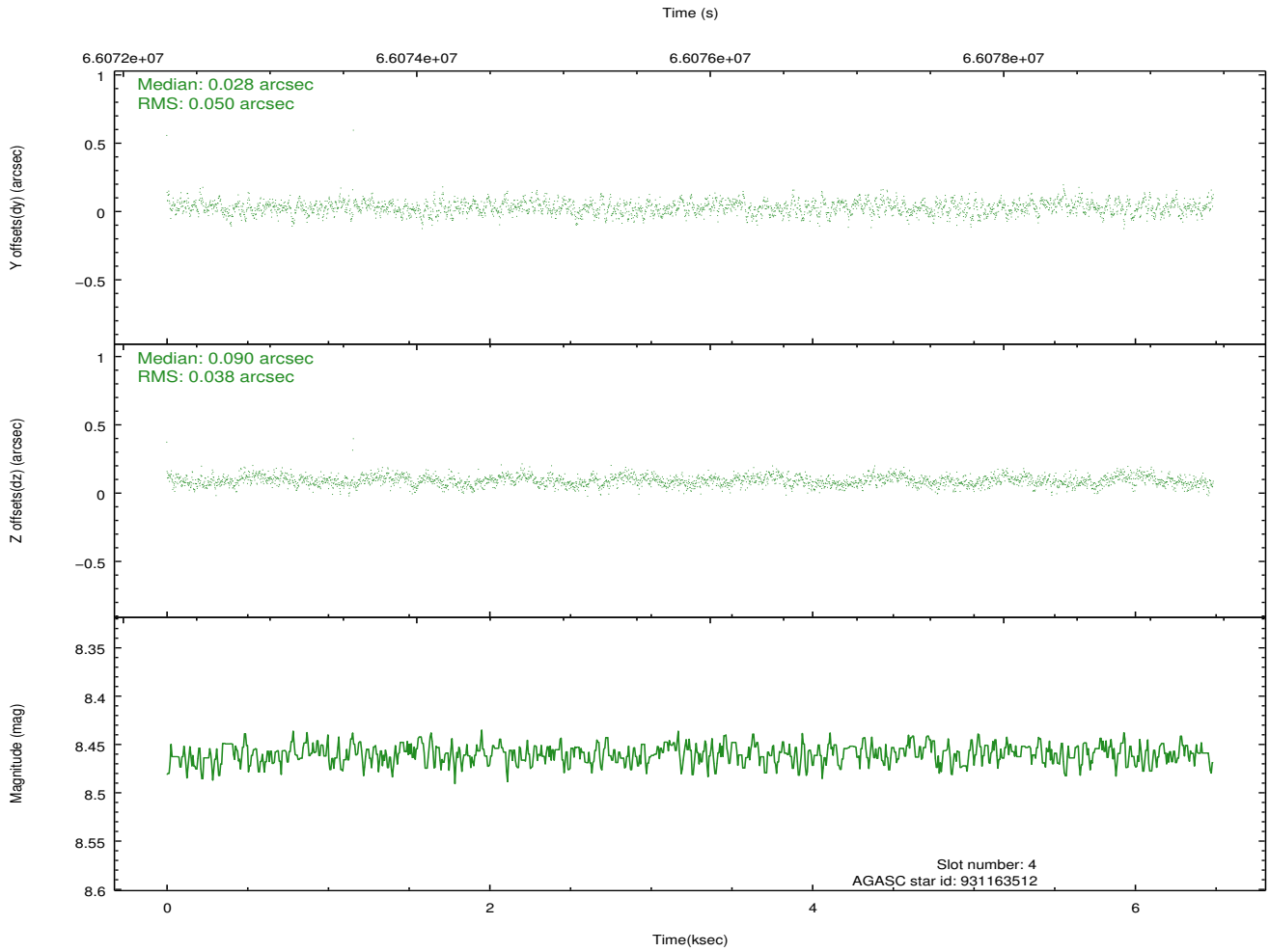
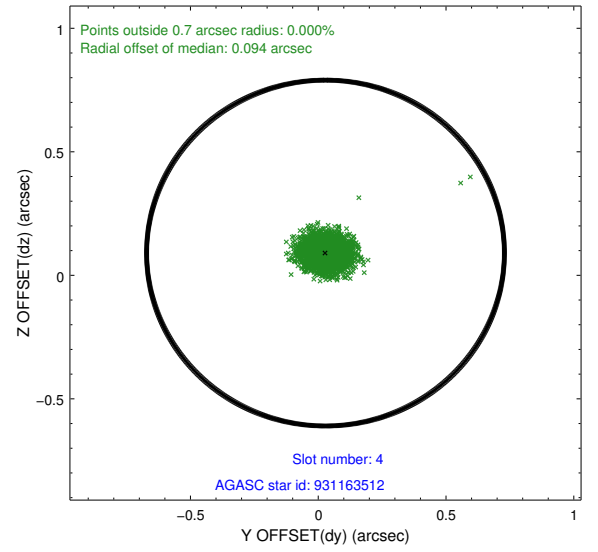
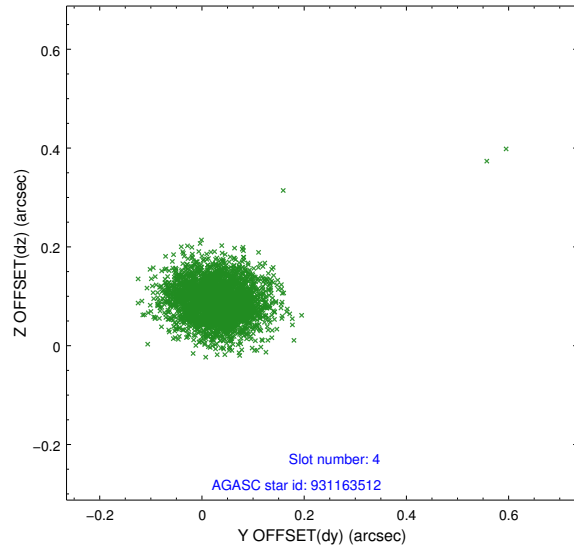
slot	status	id	mag	n_pts	med_dy	med_dz	dr1	dr2	ra	dec	mean_y	mean_z
0	FID	HRC-S-1	6.97	1581	0.111	-0.053	0.009	0.018	0.000000	0.000000	-1155.66	-451.03
1	FID	HRC-S-2	6.97	1582	0.139	-0.096	0.006	0.011	0.000000	0.000000	1243.32	-444.05
2	FID	HRC-S-3	6.99	1582	0.141	-0.153	0.010	0.022	0.000000	0.000000	-1157.54	578.13
3	GUIDE	931012368	8.76	3164	-0.093	-0.012	0.076	0.118	109.359817	-31.783345	-1266.91	-2185.27
4	GUIDE	931163512	8.46	3164	0.028	0.090	0.064	0.104	110.894384	-31.299941	1947.52	1669.33
5	GUIDE	931005504	9.34	3163	-0.022	-0.015	0.083	0.131	109.438314	-31.669733	-1264.81	-1710.33
6	GUIDE	931160352	8.64	3164	-0.082	-0.049	0.077	0.126	110.268138	-30.864891	-505.50	2075.01
7	GUIDE	931166928	9.65	3161	0.169	-0.016	0.088	0.147	110.516751	-31.454886	1214.01	612.35

2.4 Star Slots

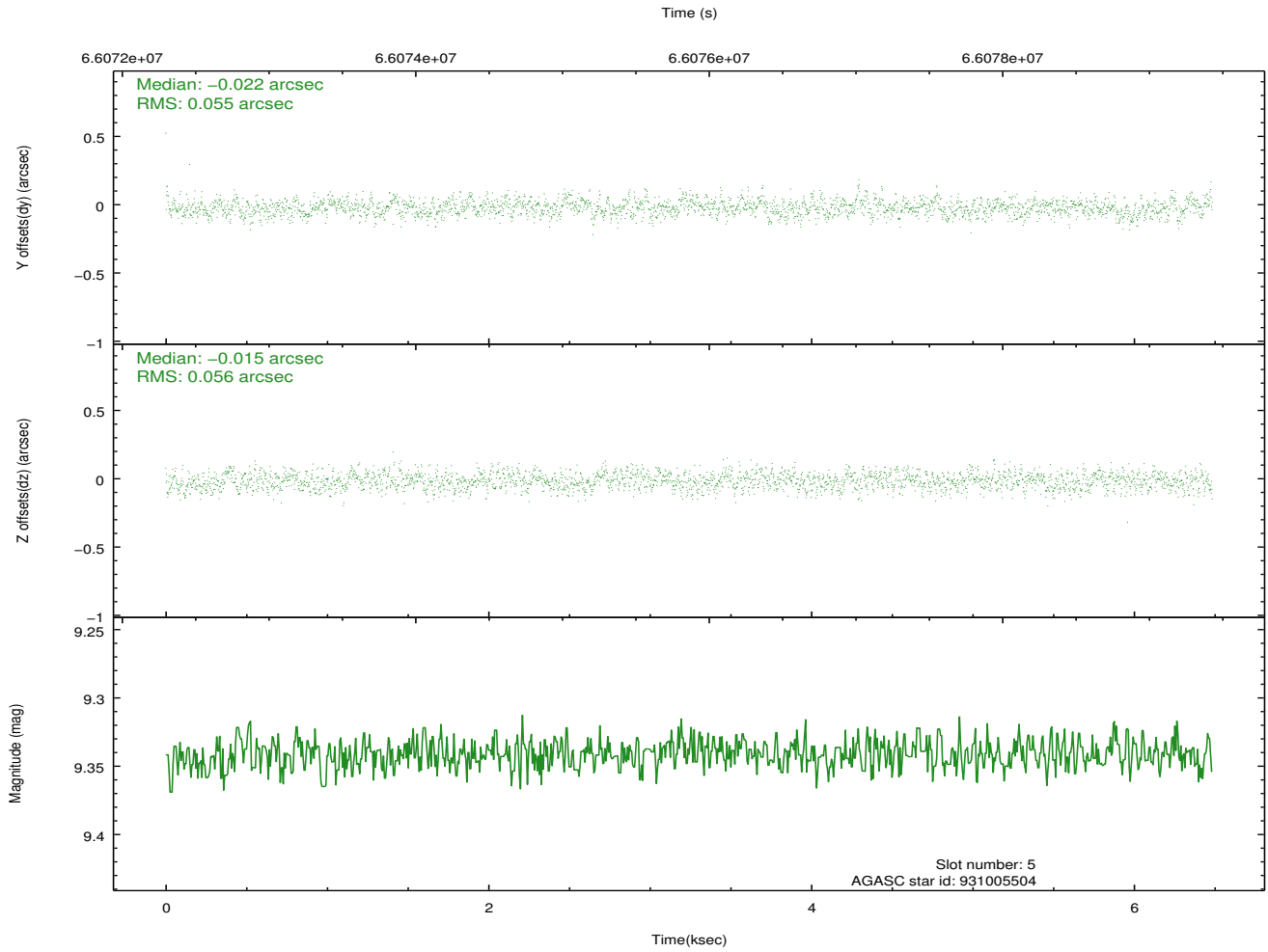
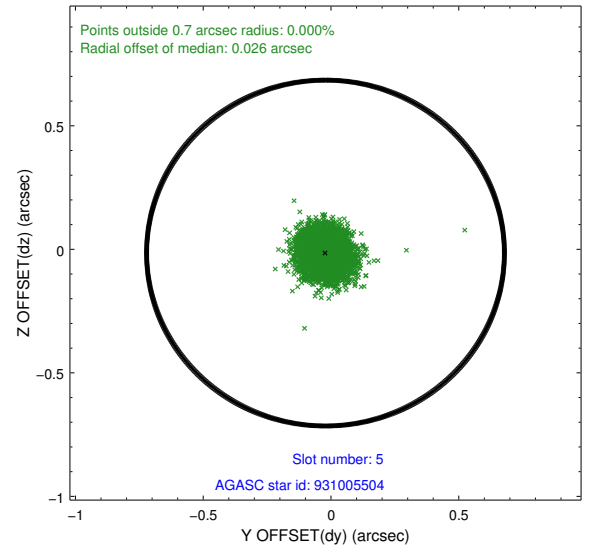
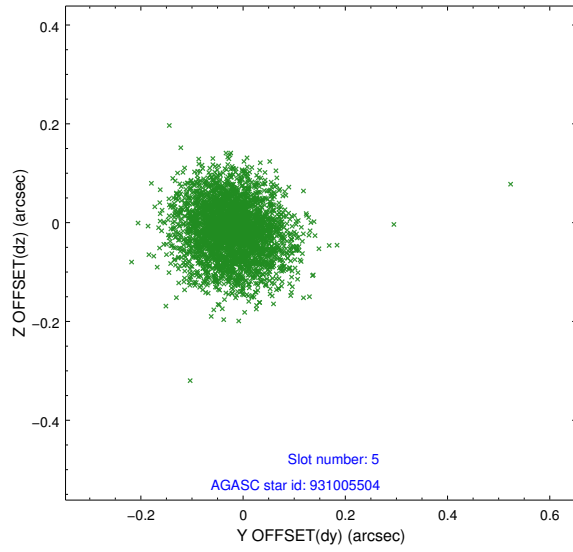
2.4.1 Slot 3



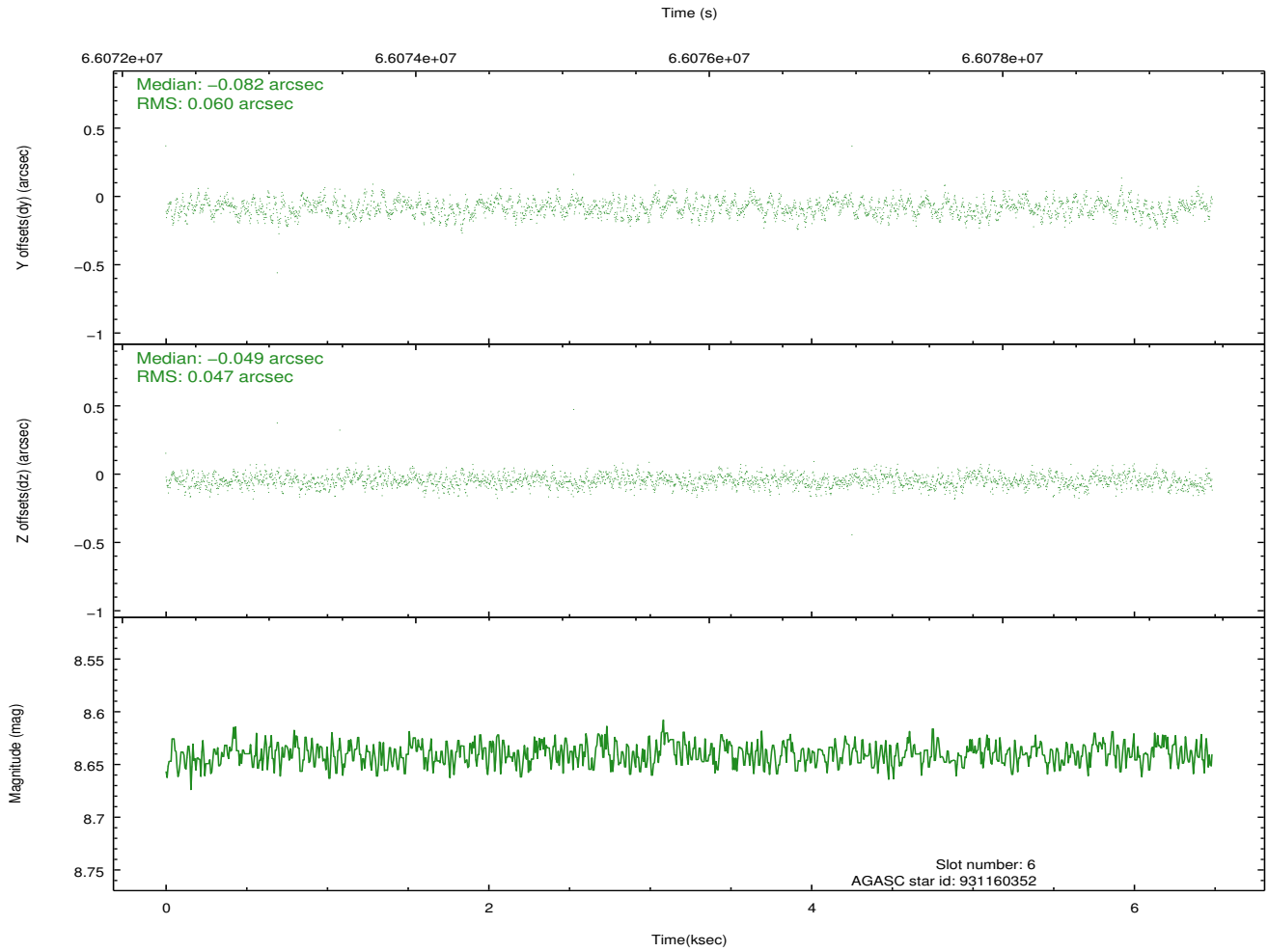
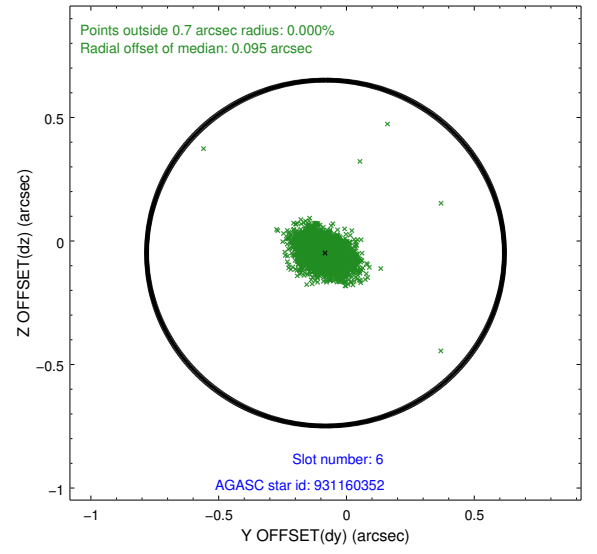
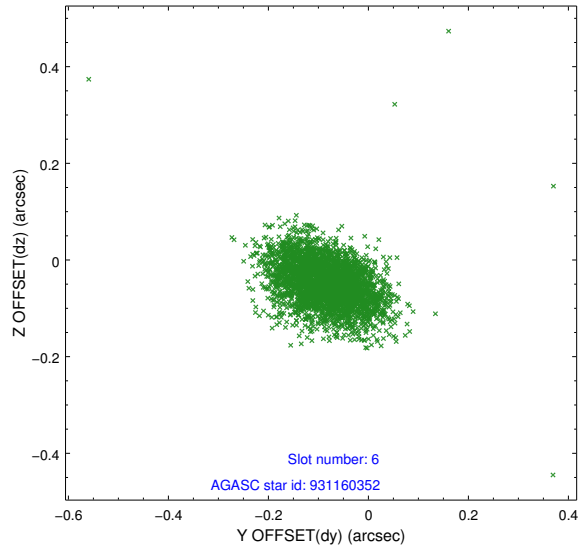
2.4.2 Slot 4



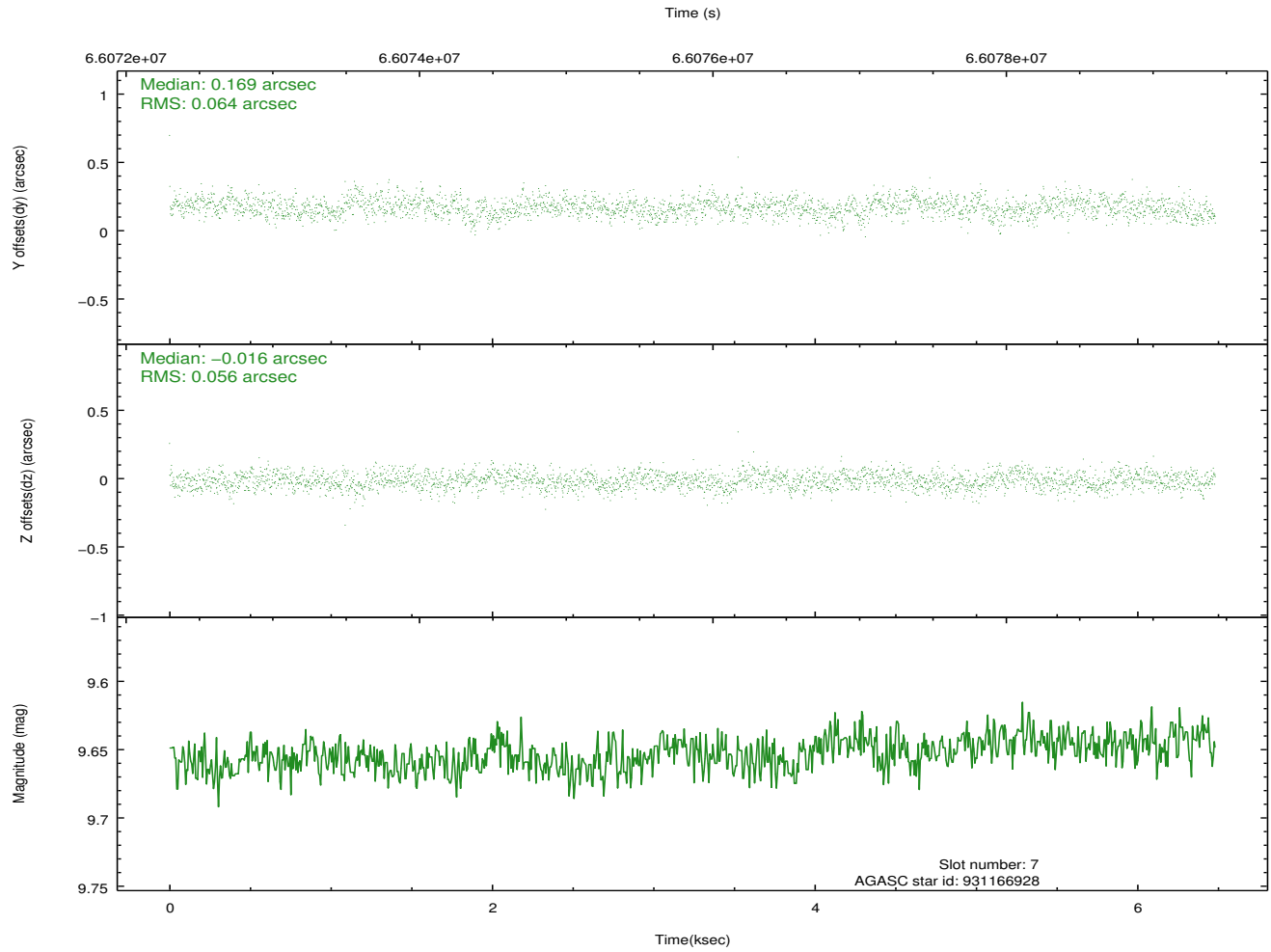
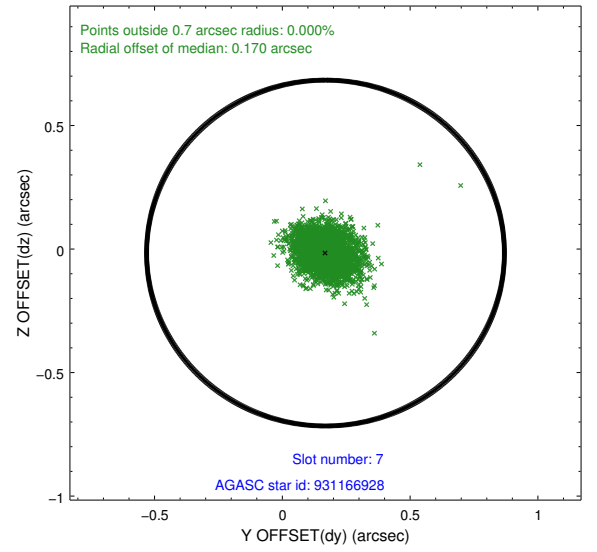
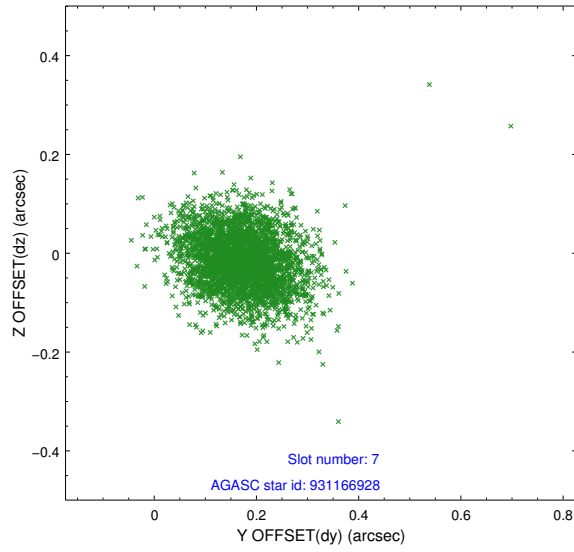
2.4.3 Slot 5



2.4.4 Slot 6

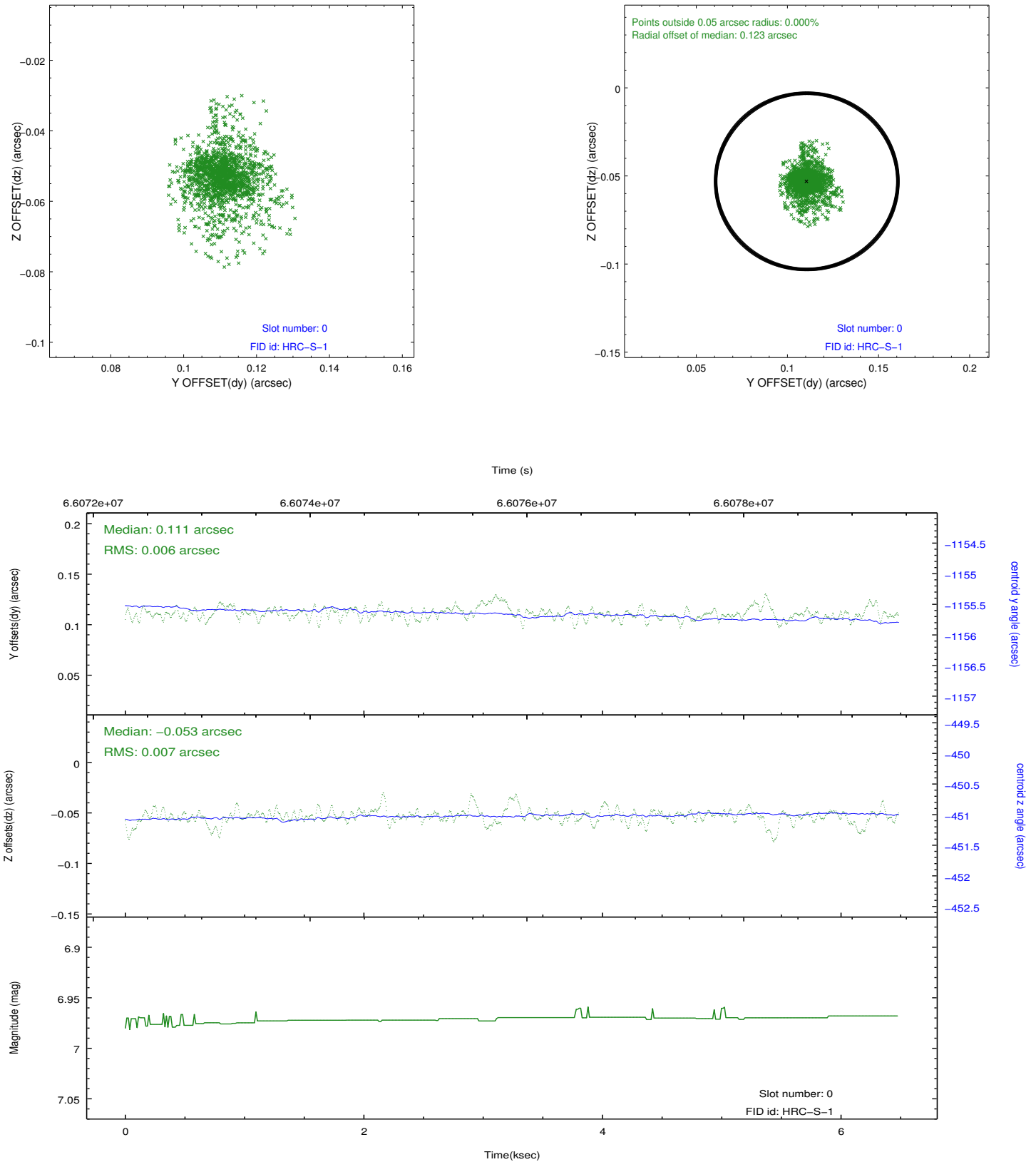


2.4.5 Slot 7

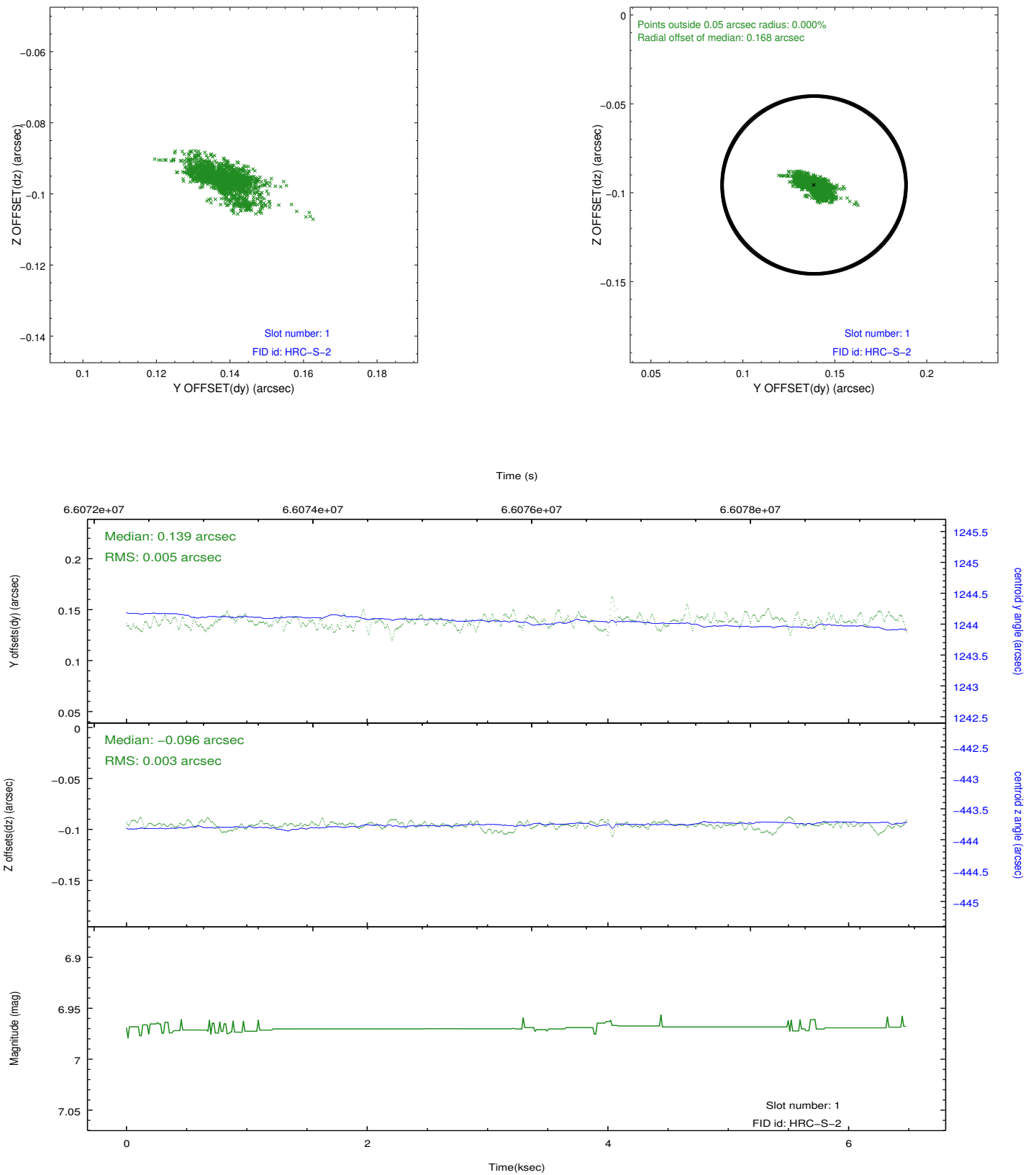


2.5 FID Slots

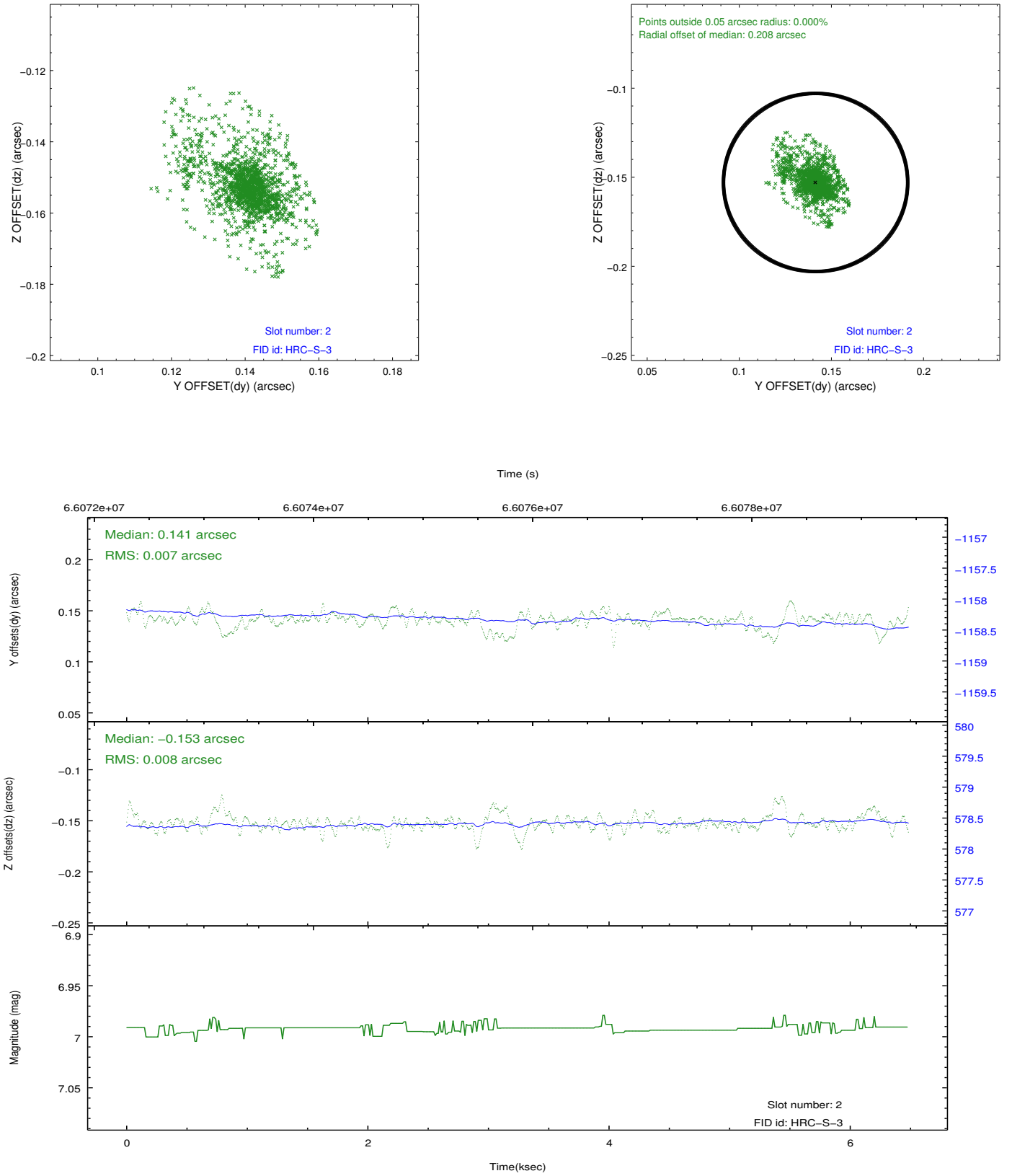
2.5.1 Slot 0



2.5.2 Slot 1

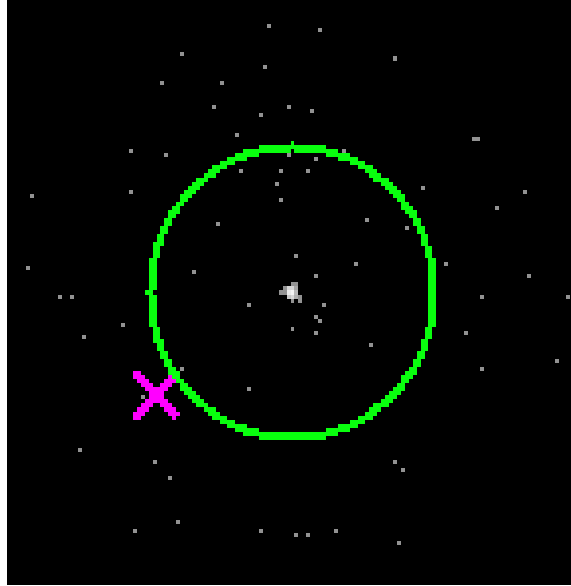


2.5.3 Slot 2

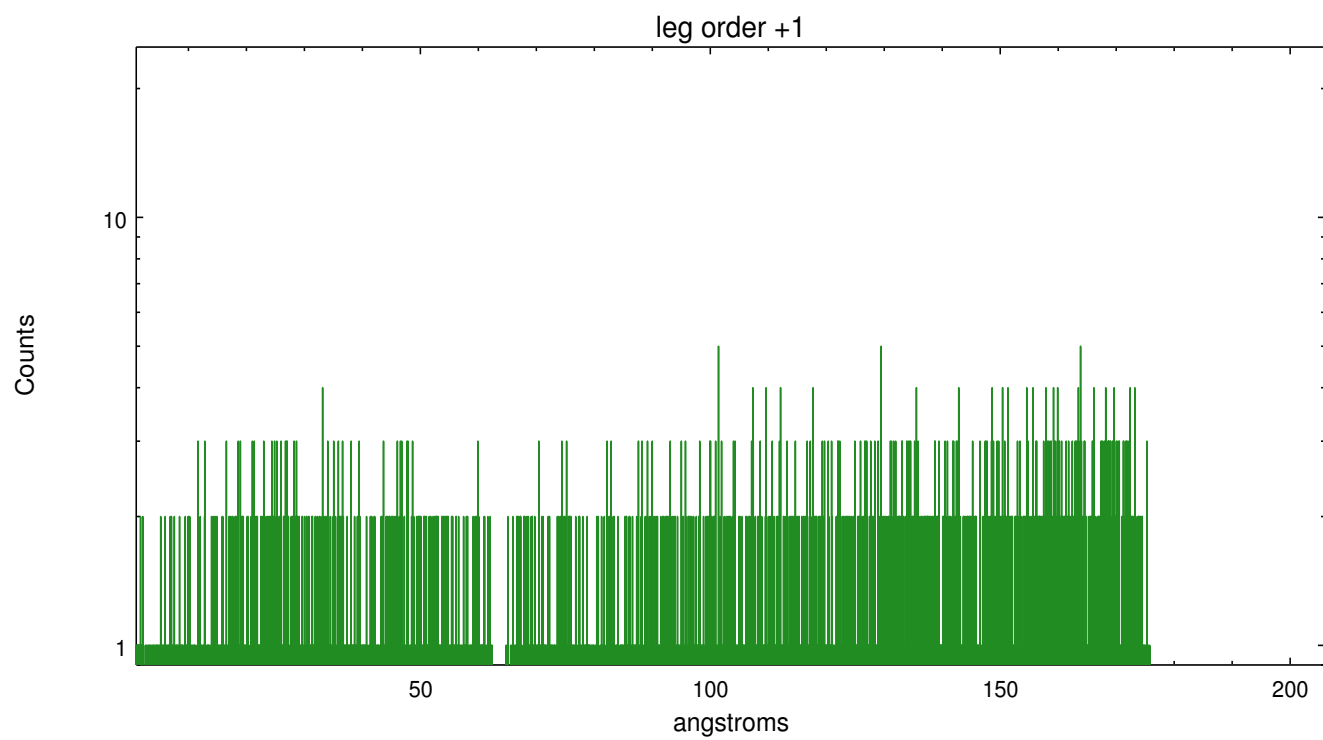
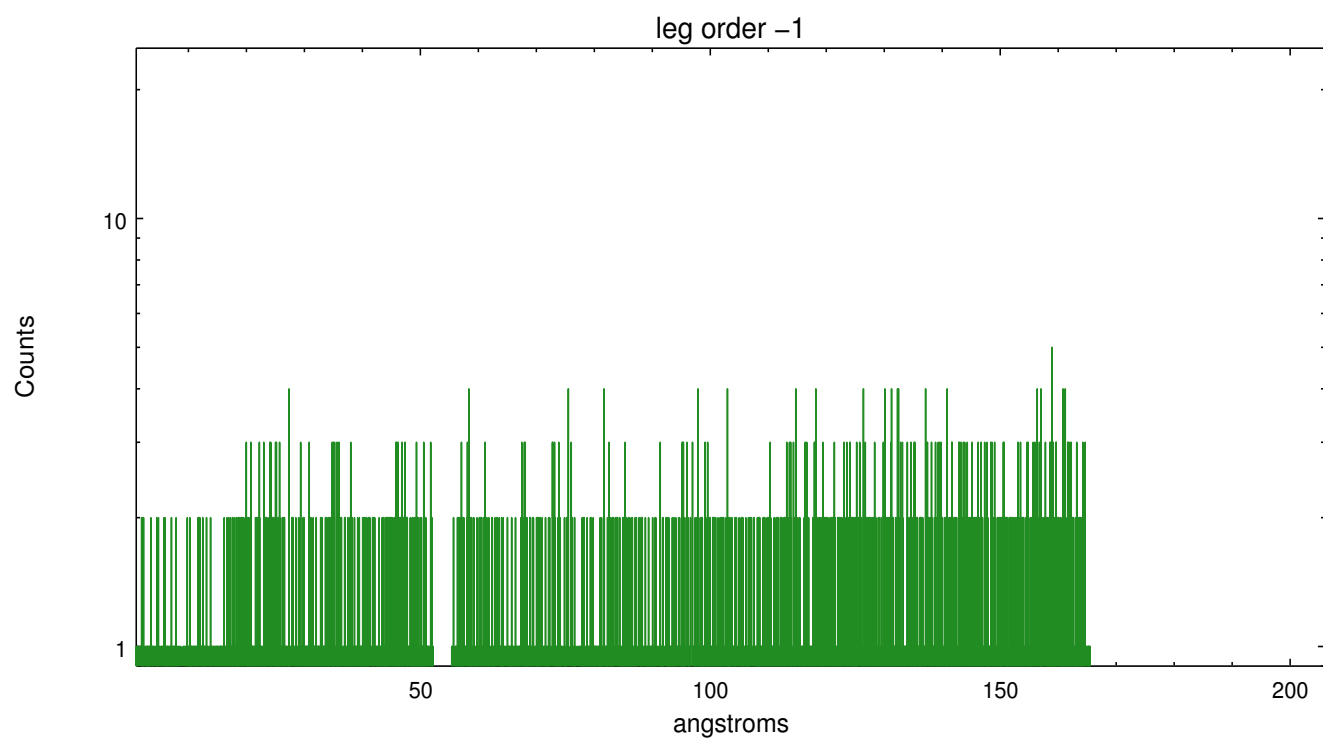


3 Gratings

3.1 LETG Arm



LETG Zero Order



A Summary

A.1 Status

V&V Scientist	Joy Nichols
V&V Date (YYYY-MM-DD)	2012.08.22
V&V Edition	1
V&V Disposition and Status	OK
V&V Charge Time	6.121

A.2 Comments

Roll constraint met.