

V&V Reference Report

L2 ASCDS Version : 7.6.10

Observation 1850 - L2 Version 001
Chandra X-Ray Center

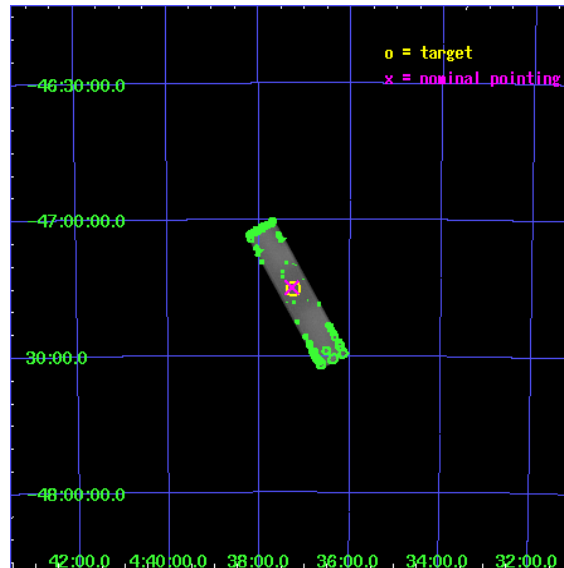
L2 Processing Date : Jun 9 2007

Contents

1	Front	2
2	OBI	3
2.1	OBI	3
2.1.1	Images	3
2.1.2	Parameters	4
2.1.3	Events	4
2.2	Compared Parameters	5
2.3	Aspect	6
2.4	Star Slots	9
2.4.1	Slot 3	9
2.4.2	Slot 4	10
2.4.3	Slot 5	11
2.4.4	Slot 6	12
2.4.5	Slot 7	13
2.5	FID Slots	14
2.5.1	Slot 0	14
2.5.2	Slot 1	15
2.5.3	Slot 2	16
3	Point Sources	17
A	Summary	18
A.1	Status	18
A.2	Comments	18

1 Front

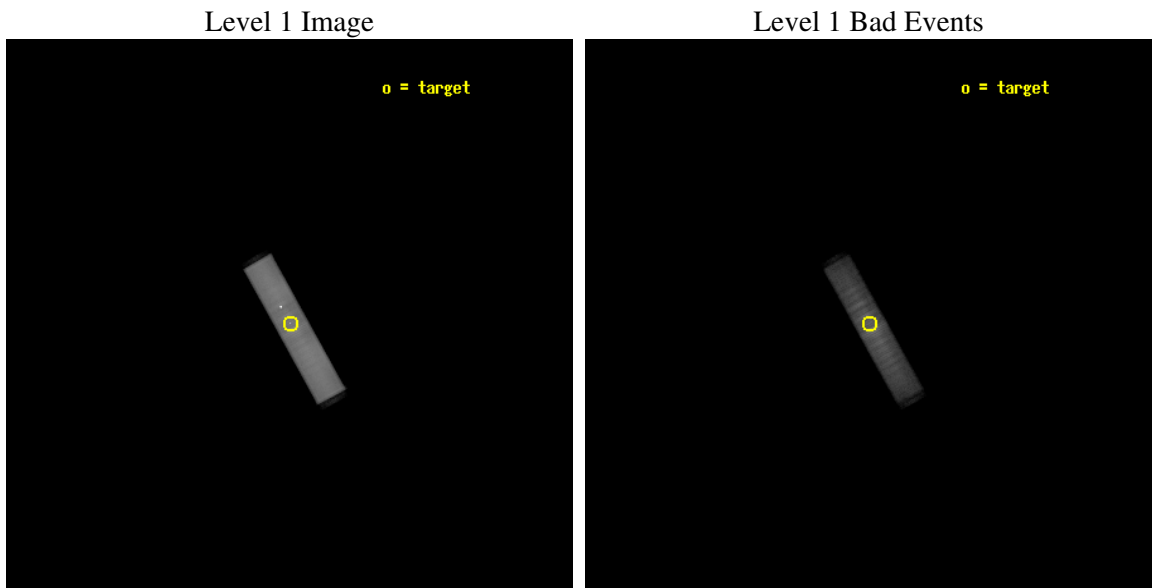
seq_num	500121
obs_id	1850
title	THE MILLISECOND PULSAR PSR J0437-4715: MAGNETOSPHERE OR ATMOSPHERE?
observer	Dr. George Pavlov
object	PSR J0437-4715
ra_targ	69.315833
dec_targ	-47.252278
ra_nom	69.319564892764
dec_nom	-47.248096823964
roll_nom	60.837078872286
revision	5
ontime	19715.106994361
livetime	19636.301631801
l2events	823407



2 OBI

2.1 OBI

2.1.1 Images



2.1.2 Parameters

obi_num	0
ascdsver	7.6.10
caldbver	3.4.0
date	2007-06-09T19:29:49
revision	4

sched_exp_time	19577.081000
ontime	19715.106994361
l1events	1210354

2.1.3 Events

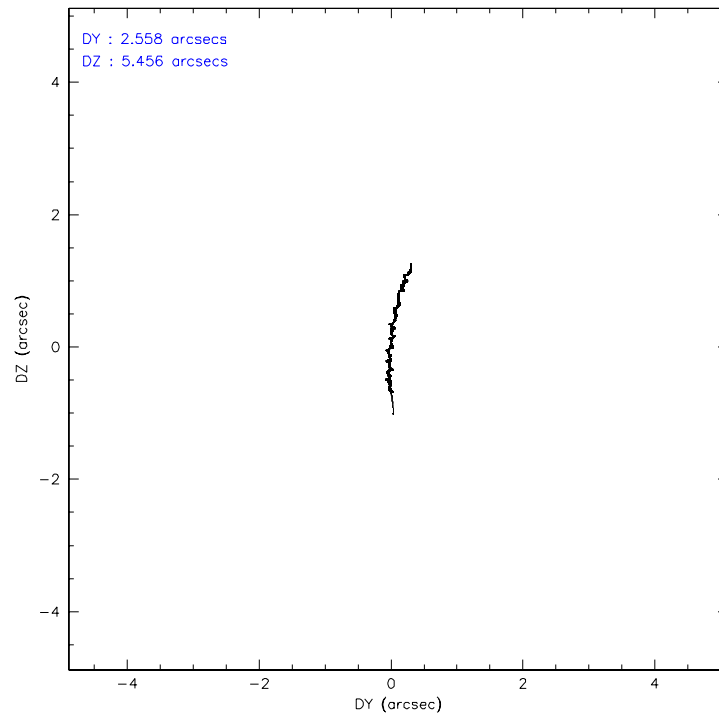
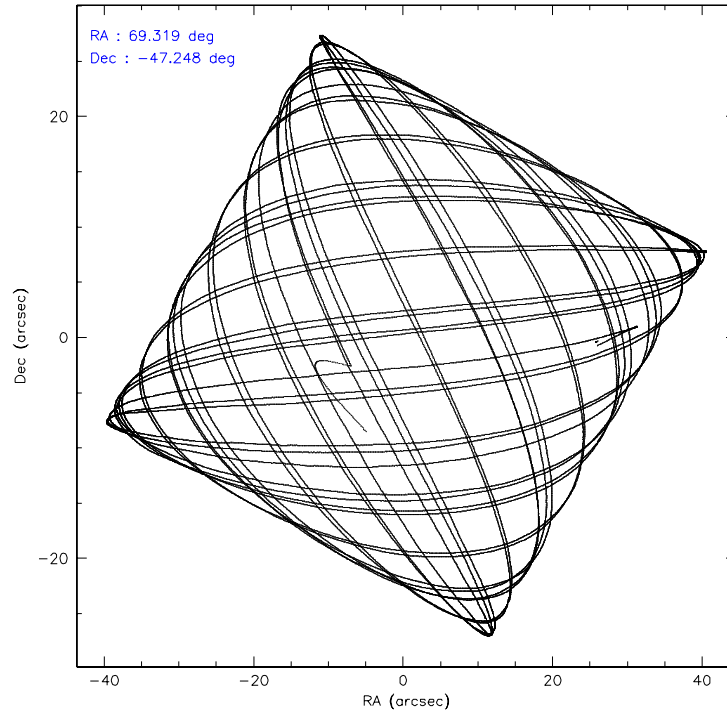
Level 1 Events

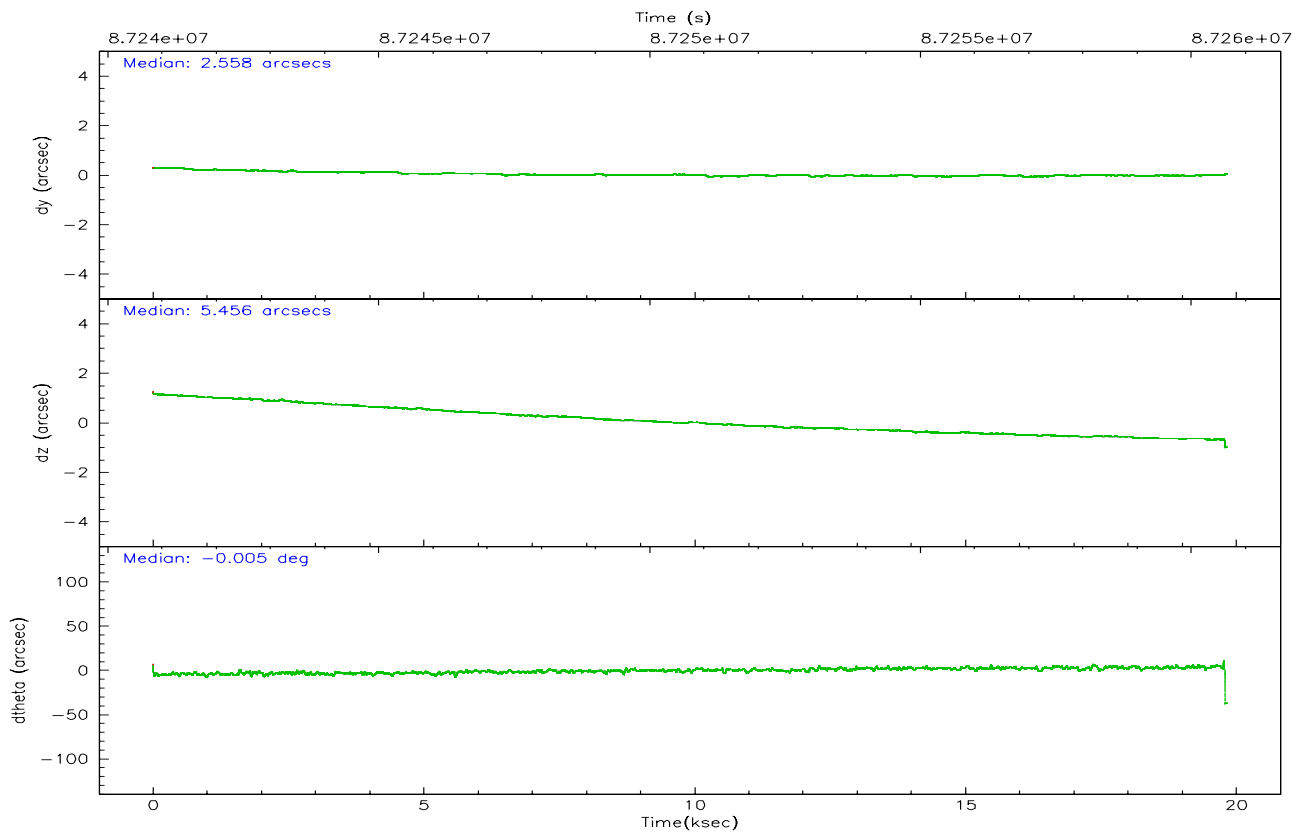
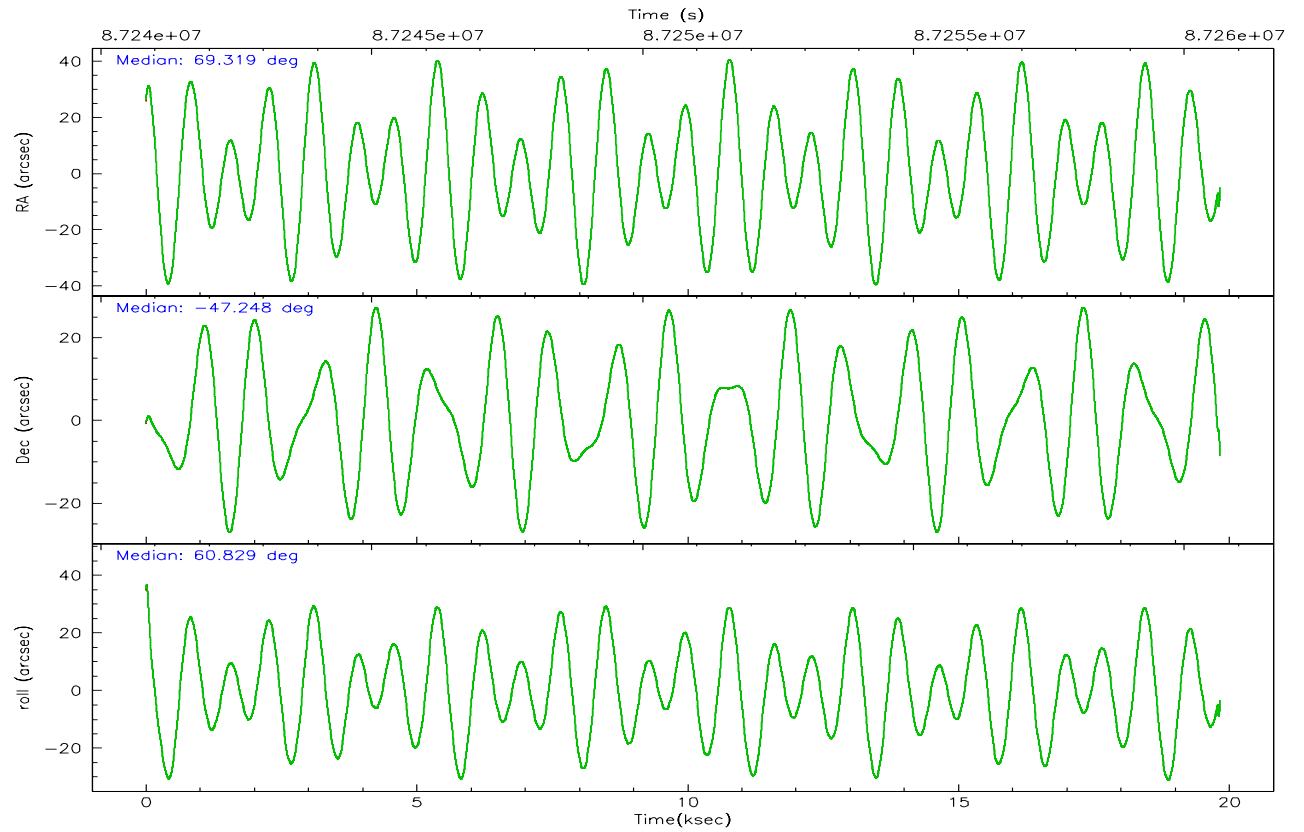
	segment 1	segment 2	segment 3
level 1 events	4031	1203868	2455
rejected events	3947	338889	2455
rejected %	97%	28%	100%

2.2 Compared Parameters

Parameter	Planned	Actual	Parameter	Planned	Actual
Instrument	HRC	HRC	Obspar format version number	6	6
Detector	HRC-S	HRC-S	Obspar file type	PREDICTED	ACTUAL
Grating	NONE	NONE	Obspar update status	NONE	UPDATED
Data mode	OBSERVING	OBSERVING			
Observation mode	POINTING	POINTING			
Pointing RA	69.322062	69.31956489276411			
Pointing Dec	-47.276798	-47.24809682396434			
Pointing Roll	60.771566	60.8370788722863			
SIM focus pos (mm)	-1.429586	-1.428180813131781			
SIM defocus (mm)	0.1037507710433287	0.1051558262725154			
SIM translation stage pos (mm)	250.455976	250.466033080201			
SIM translation stage offset (mm)	0	-0.01005468664627074			
Observation start time	87240966.184000	87239906.517728			
Observation start date	2000-10-06T17:35:02	2000-10-06T17:18:26			
Observation end time	87260543.184000	87261448.431041			
Observation end date	2000-10-06T23:01:19	2000-10-06T23:17:28			

2.3 Aspect



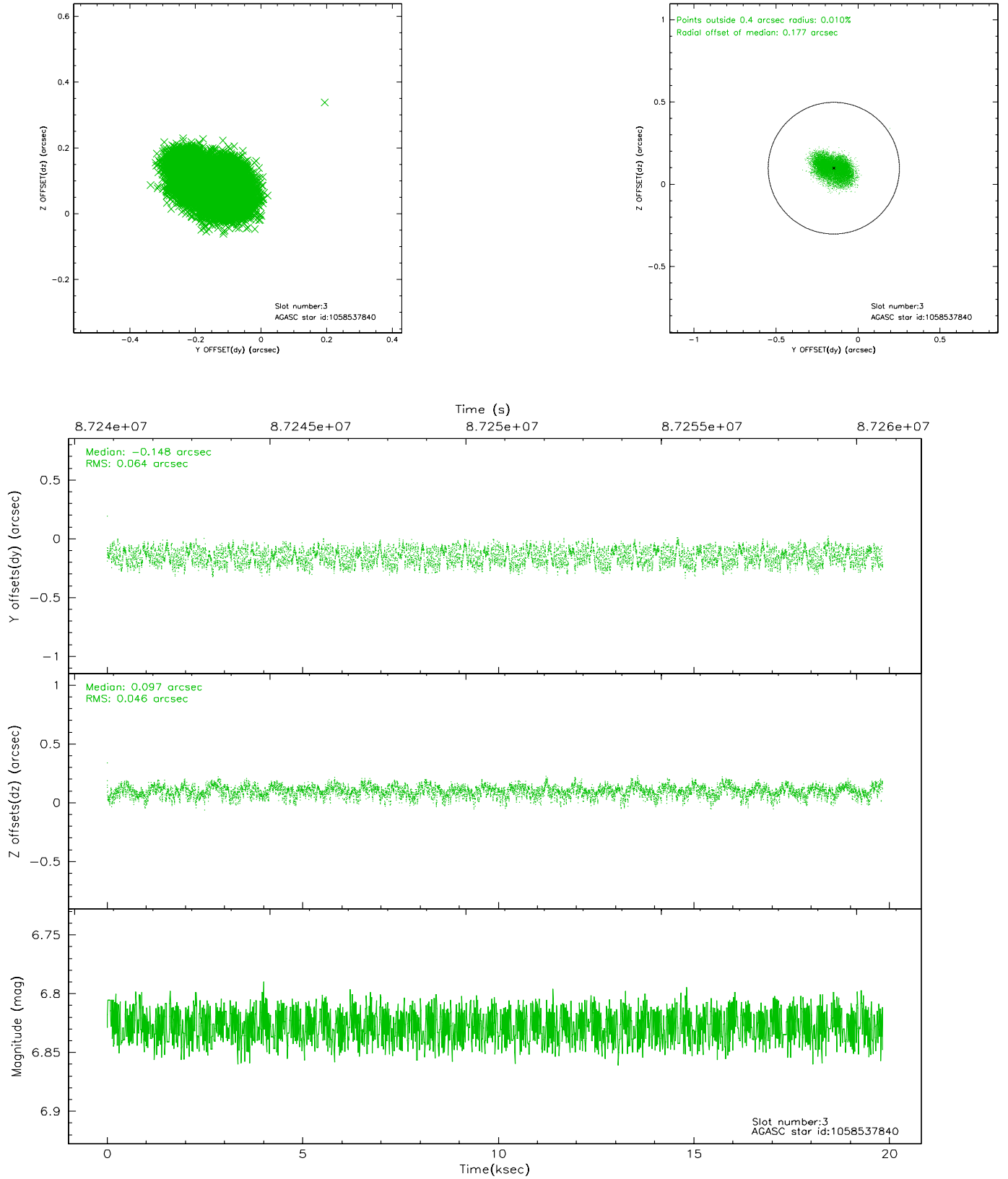


Slot Statistics

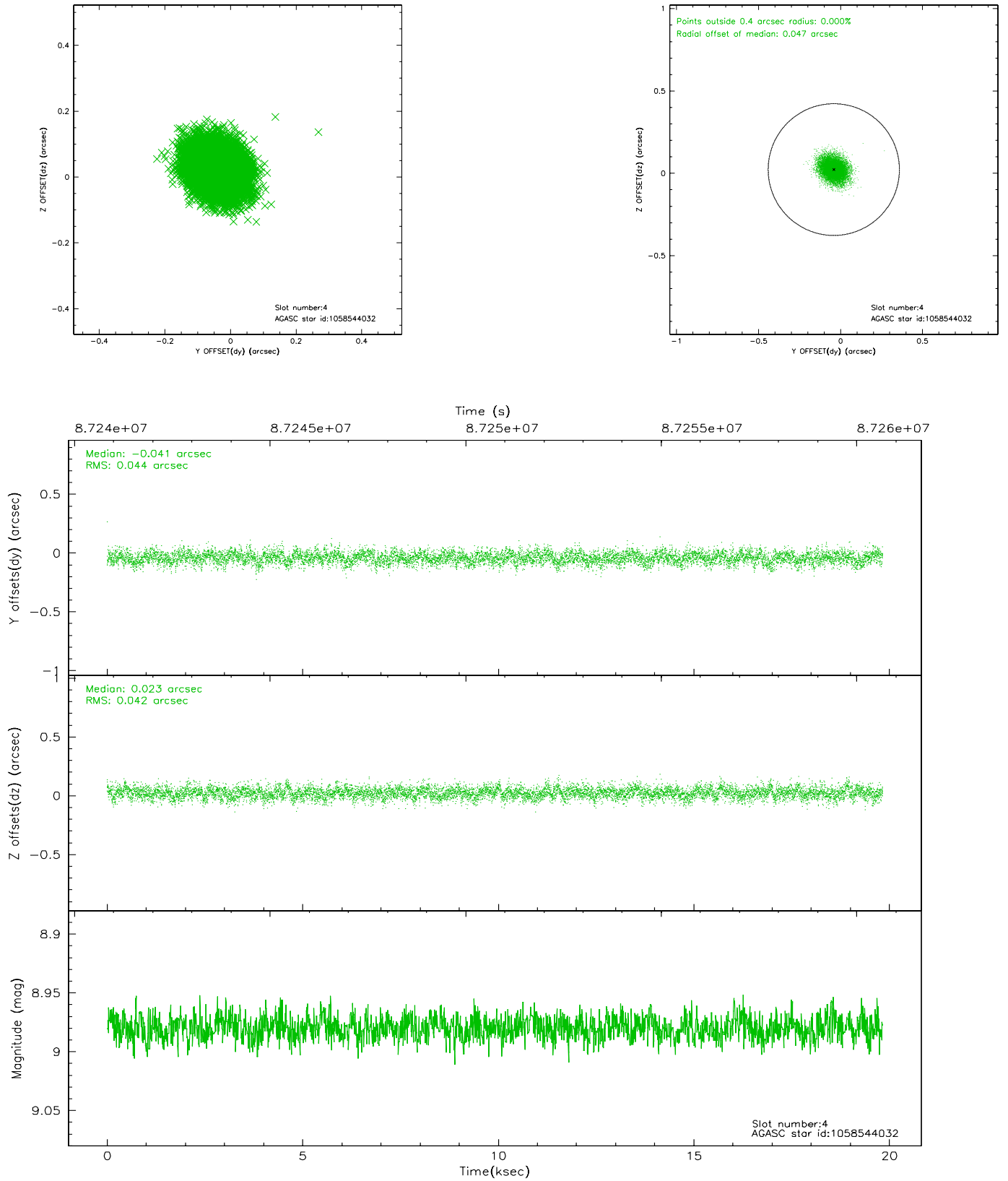
slot	status	id	mag	n_pts	med_dy	med_dz	dr1	dr2	ra	dec	mean_y	mean_z
0	FID	HRC-S-1	7.03	4832	0.108	-0.165	0.016	0.044	0.000000	0.000000	-1156.64	-454.13
1	FID	HRC-S-3	7.04	4827	0.151	-0.039	0.017	0.050	0.000000	0.000000	-1159.59	575.42
2	FID	HRC-S-4	6.99	4828	0.129	-0.091	0.009	0.018	0.000000	0.000000	1241.37	578.23
3	GUIDE	1058537840	6.83	9669	-0.148	0.097	0.086	0.129	70.442463	-47.259783	1373.74	-2368.41
4	GUIDE	1058544032	8.98	9668	-0.041	0.023	0.064	0.107	69.576631	-47.141596	728.92	-307.12
5	GUIDE	1058931064	9.48	9670	0.040	0.045	0.095	0.152	69.760694	-47.722390	-882.95	-1712.07
6	GUIDE	1058546816	9.58	9669	0.057	-0.146	0.135	0.219	68.118478	-47.473802	-2068.54	2197.71
7	GUIDE	1058541248	10.17	9664	0.081	-0.018	0.117	0.191	69.904987	-47.056466	1386.16	-862.73

2.4 Star Slots

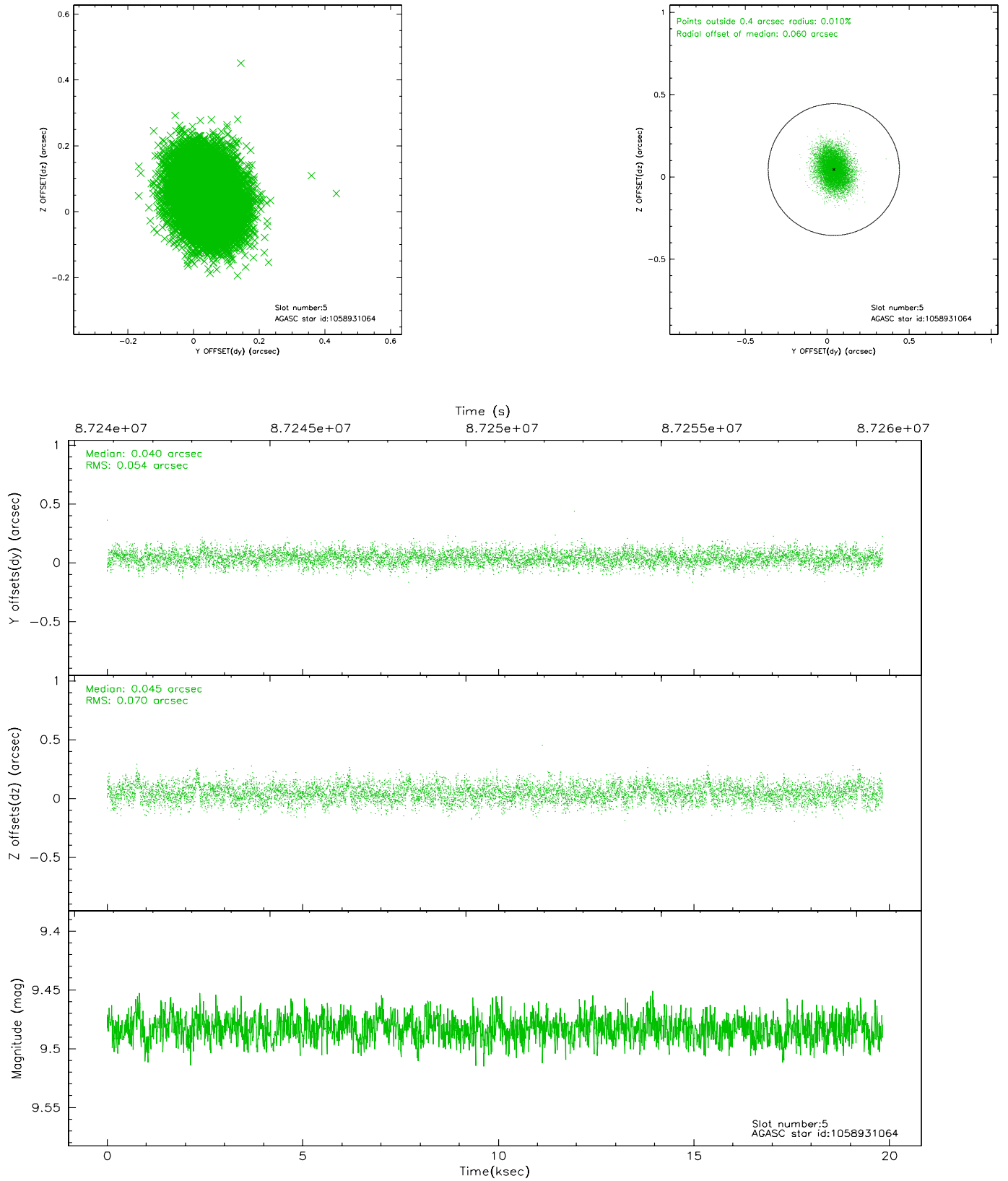
2.4.1 Slot 3



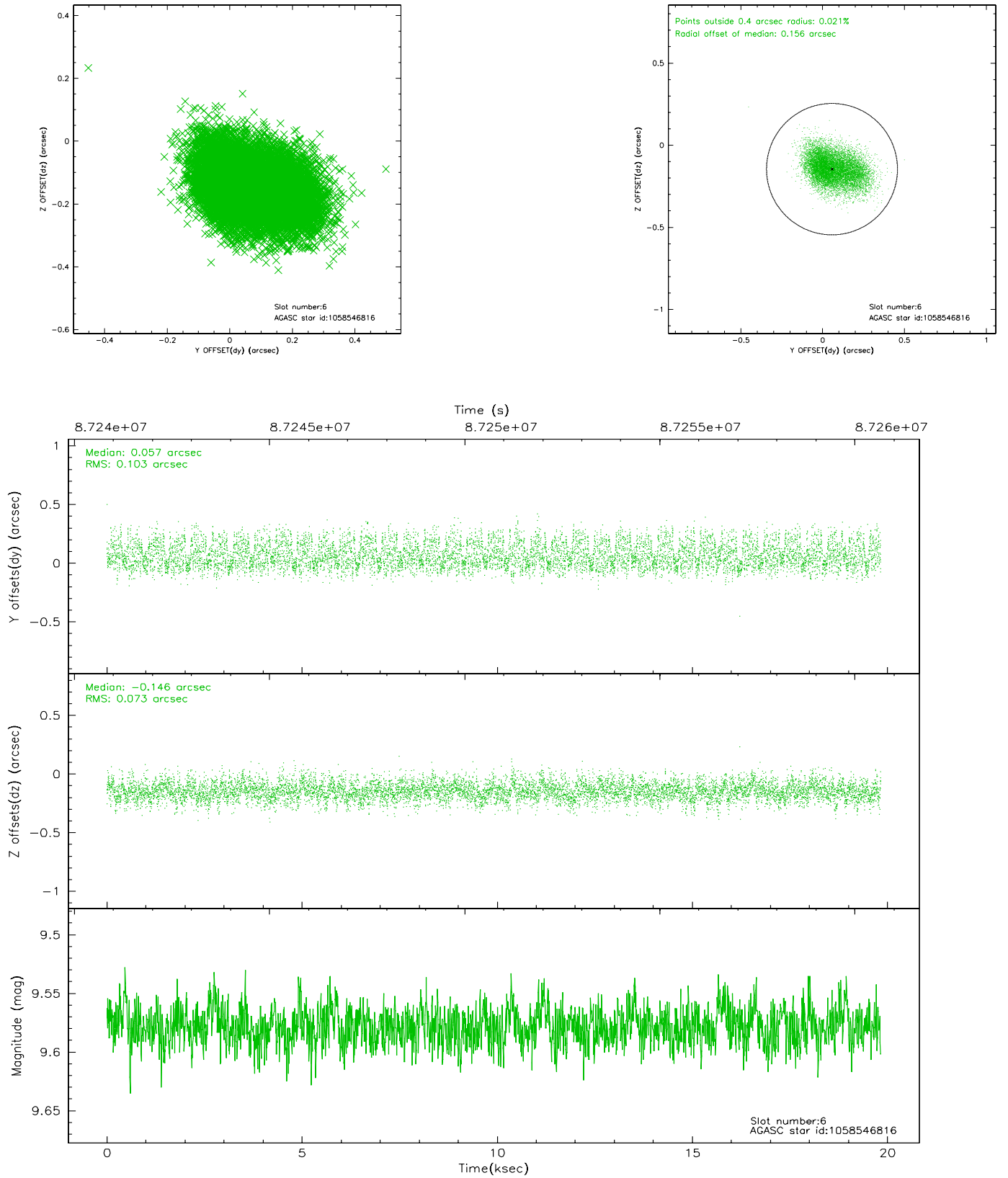
2.4.2 Slot 4



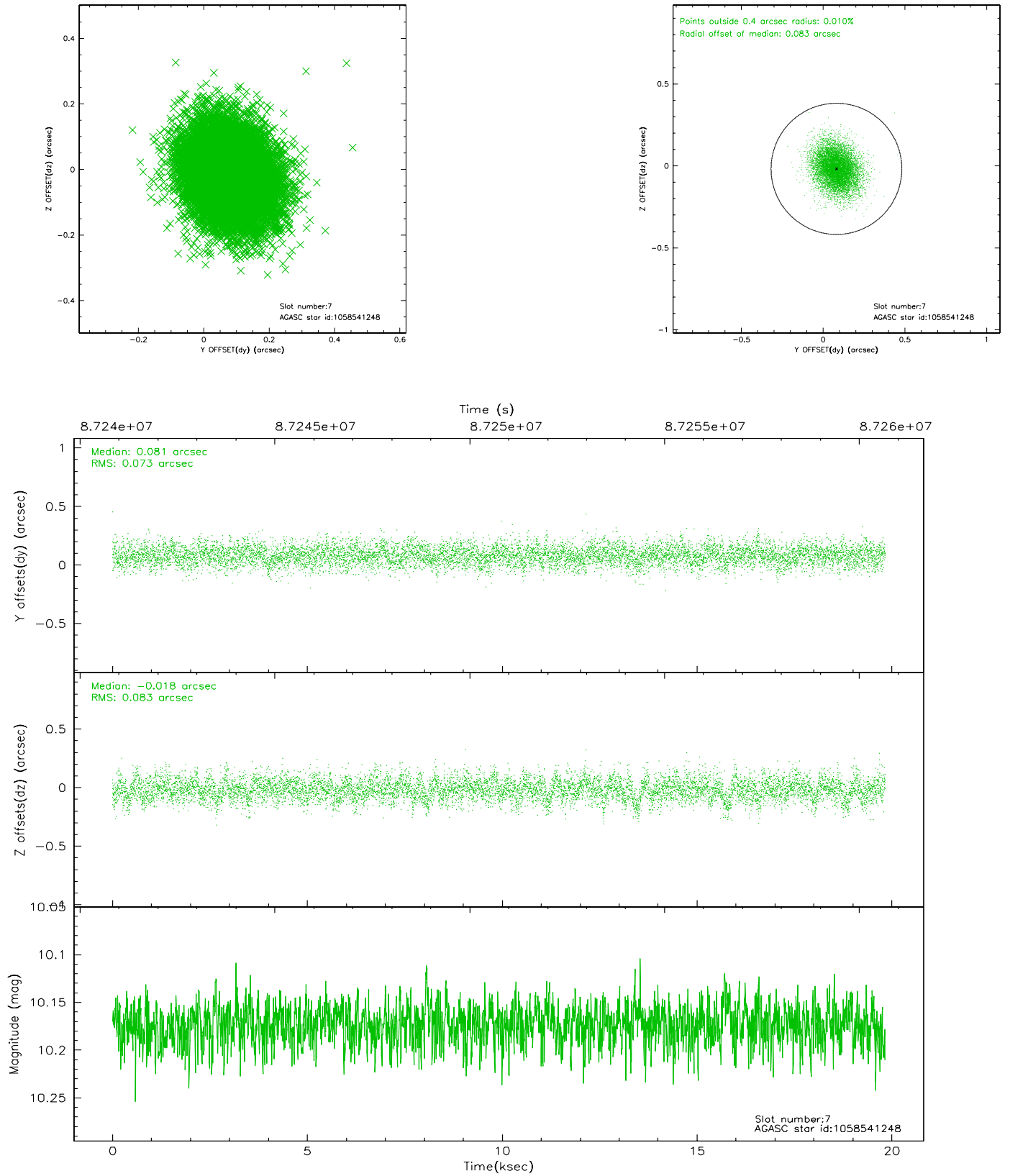
2.4.3 Slot 5



2.4.4 Slot 6

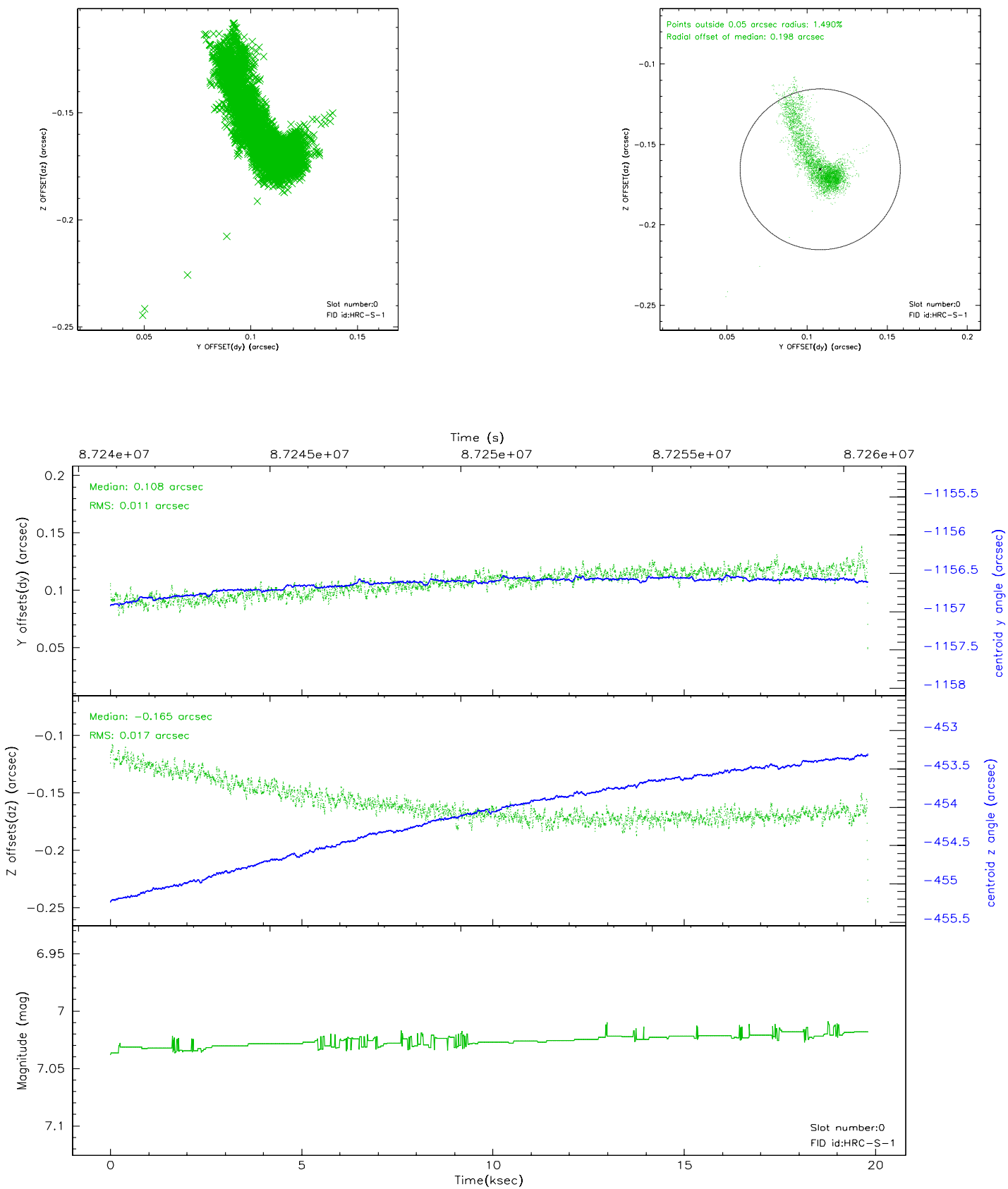


2.4.5 Slot 7

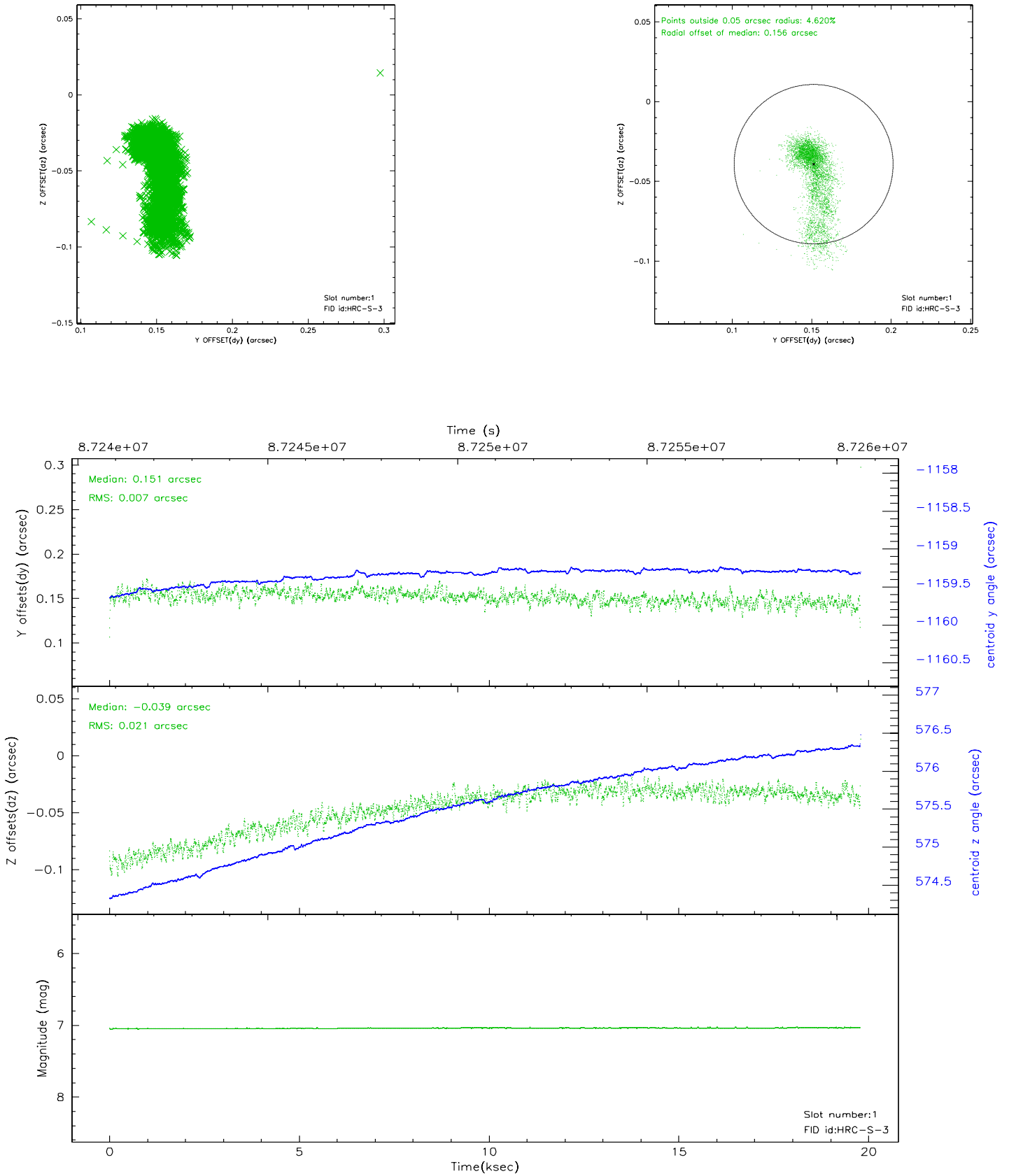


2.5 FID Slots

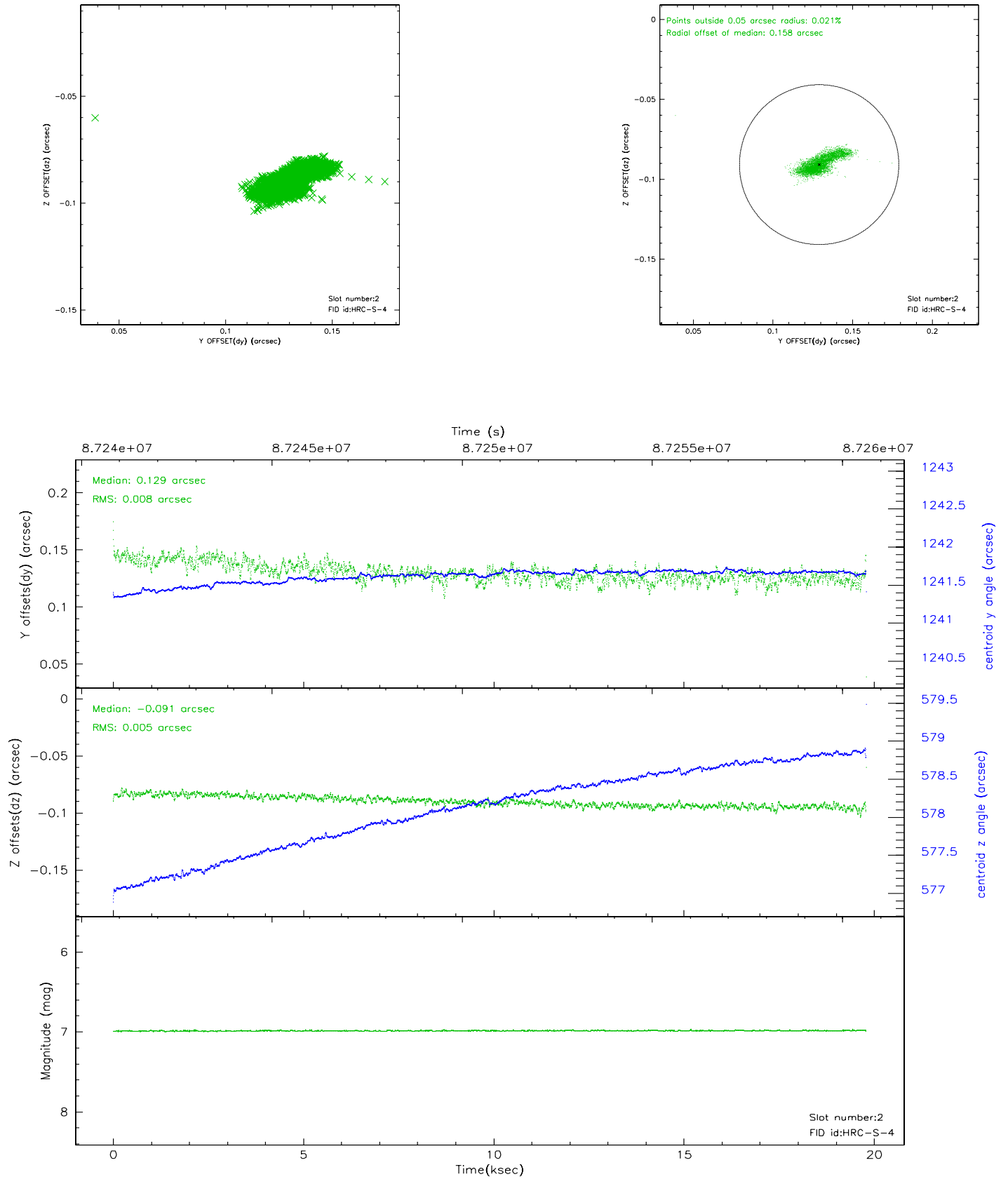
2.5.1 Slot 0



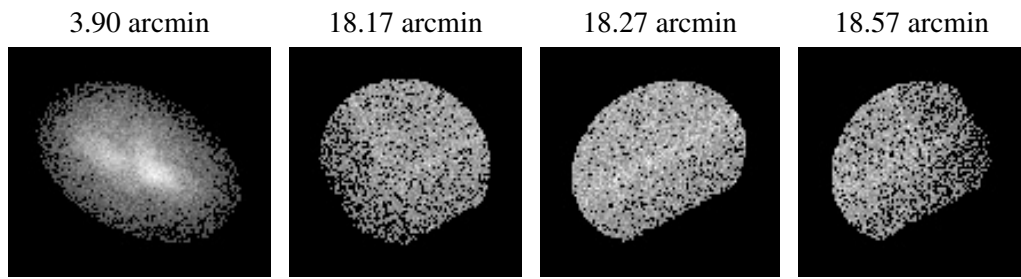
2.5.2 Slot 1



2.5.3 Slot 2



3 Point Sources



A Summary

A.1 Status

V&V Scientist	Beth Sundheim
V&V Date (YYYY-MM-DD)	2007.06.11
V&V Edition	1
V&V Disposition and Status	OK
V&V Charge Time	19.708

A.2 Comments

There is a momentary spike in the count rate at ~13 ksec.