

V&V Reference Report

L2 ASCDS Version : 7.6.11.10

Observation 719 - L2 Version 5
Chandra X-Ray Center

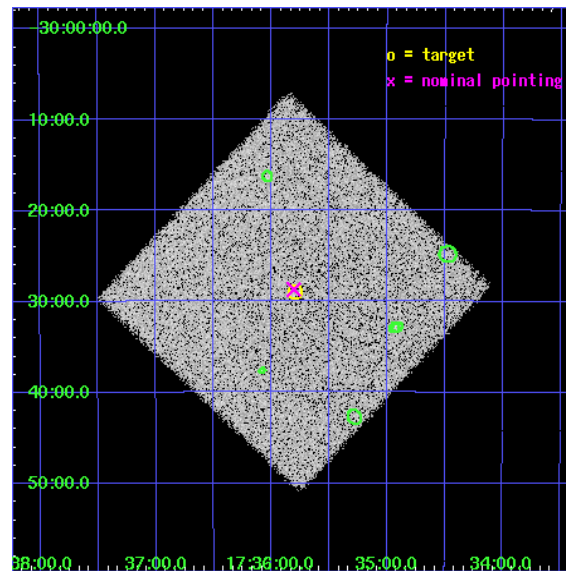
L2 Processing Date : Feb 5 2009

Contents

1	Front	2
2	OBI	3
2.1	OBI	3
2.1.1	Images	3
2.1.2	Parameters	4
2.1.3	Events	4
2.2	Compared Parameters	5
2.3	Aspect	6
2.4	Star Slots	9
2.4.1	Slot 3	9
2.4.2	Slot 4	10
2.4.3	Slot 5	11
2.4.4	Slot 6	12
2.4.5	Slot 7	13
2.5	FID Slots	14
2.5.1	Slot 0	14
2.5.2	Slot 1	15
2.5.3	Slot 2	16
3	Point Sources	17
A	Summary	18
A.1	Status	18
A.2	Comments	18

1 Front

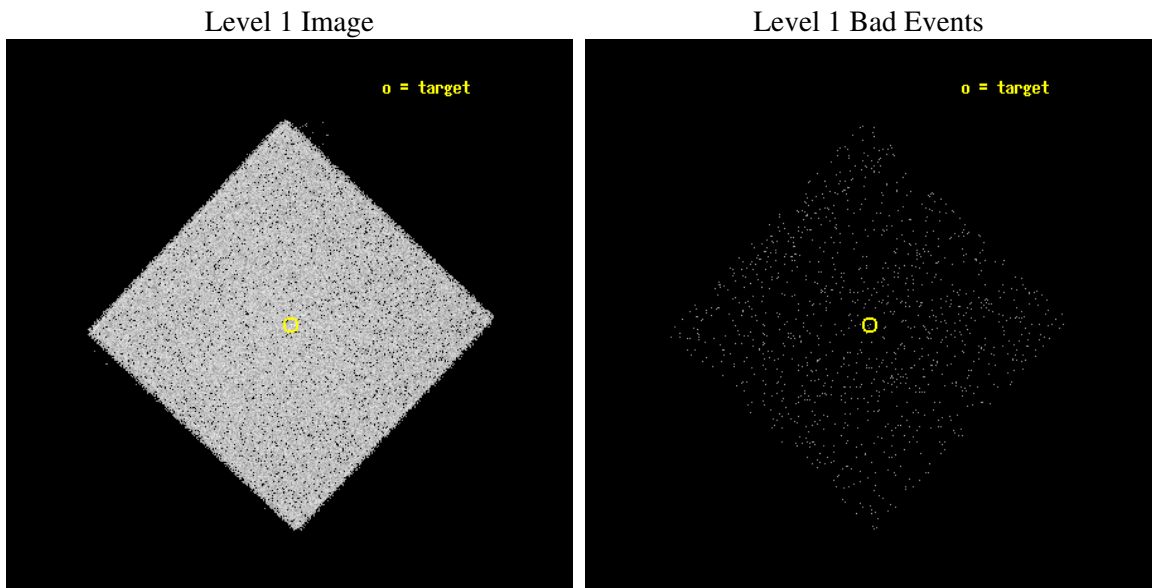
seq_num	400086
obs_id	719
title	BRIGHT LMXB GLOBULAR CLUSTER SURVEY: NATURE, MASSES AND CLUSTER DYNAMICS
observer	PROFESSOR JONATHAN GRINDLAY
object	TERZAN 1
ra_targ	263.9492
dec_targ	-30.4828
ra_nom	263.95160850815
dec_nom	-30.478255034634
roll_nom	88.18549250606
revision	5
ontime	3665.6563838869
livetime	3645.3968955383
l2events	99714



2 OBI

2.1 OBI

2.1.1 Images



2.1.2 Parameters

obi_num	1
ascdsver	7.6.11.10
caldbver	3.5.1
date	2009-02-05T12:36:25
revision	5

sched_exp_time	3500.000000
ontime	3665.6563838869
l1events	165073

2.1.3 Events

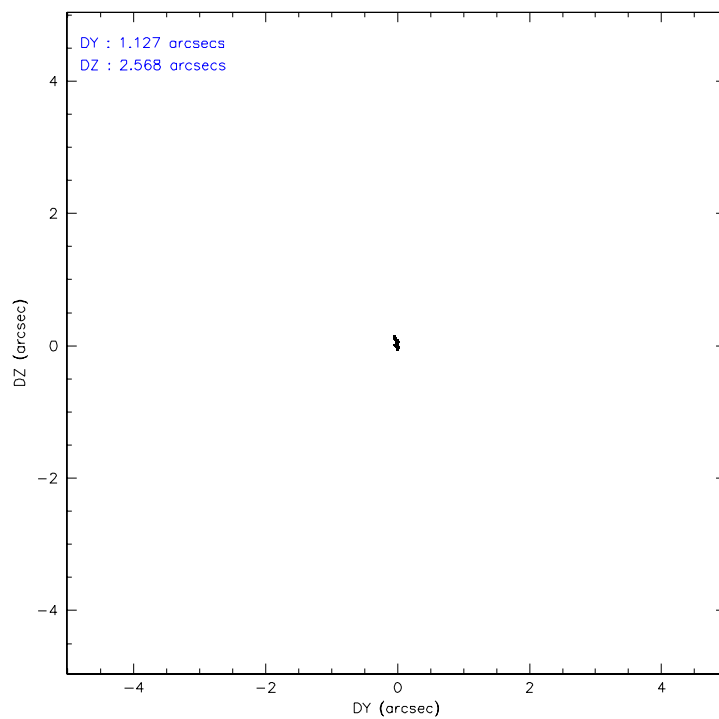
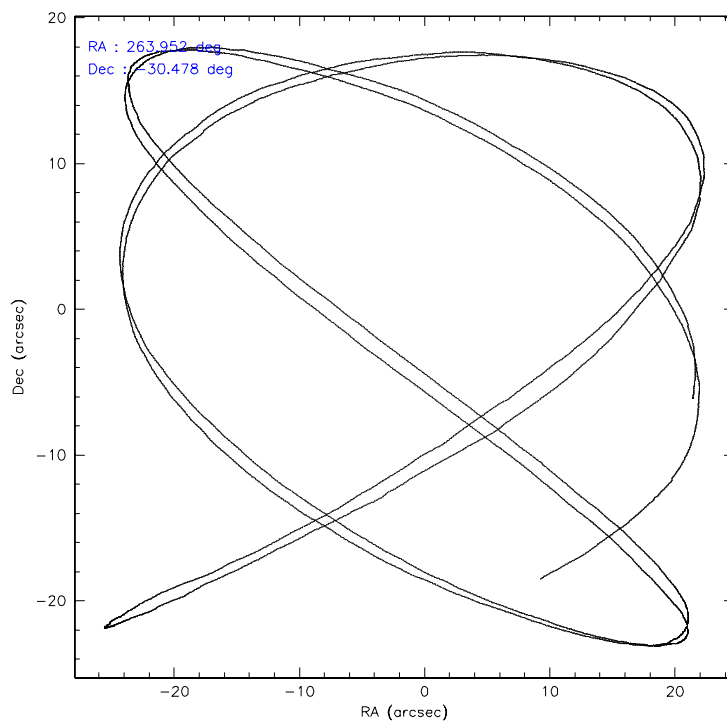
Level 1 Events

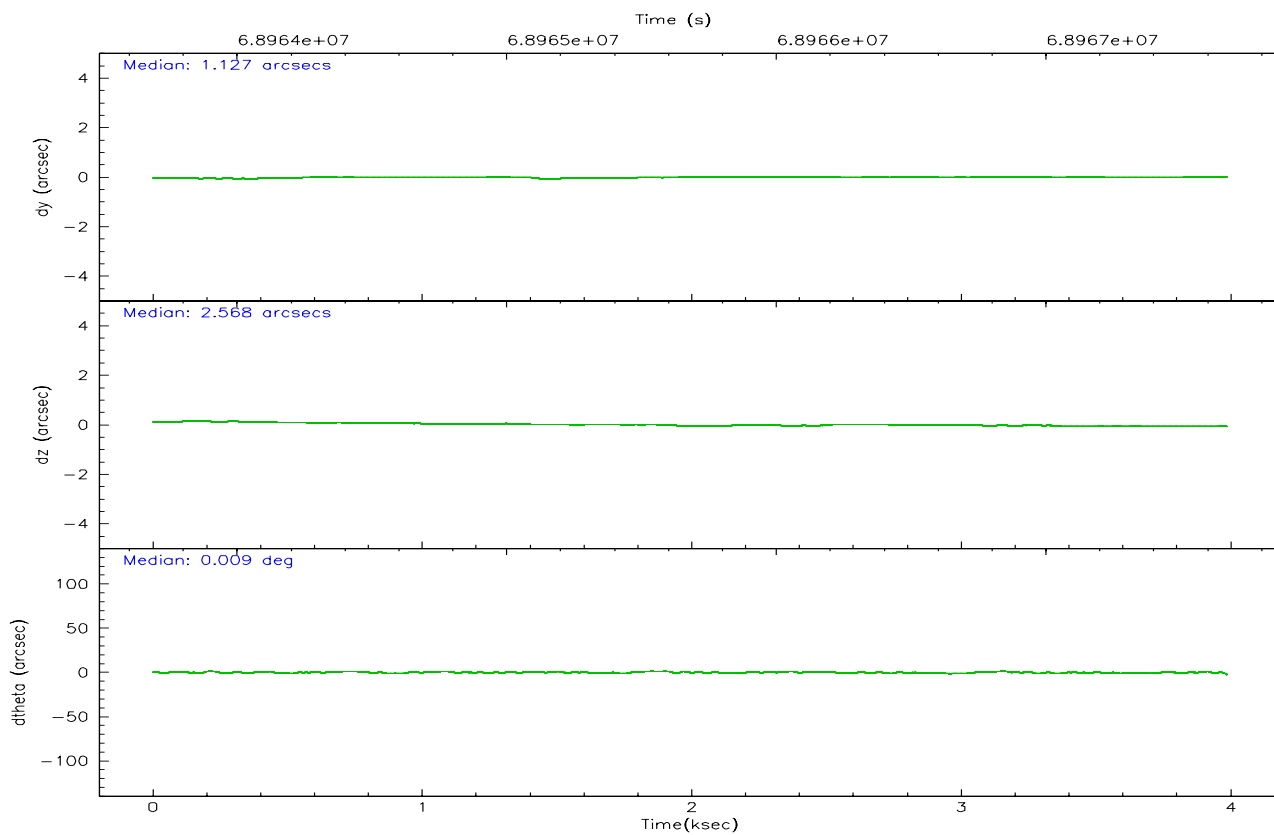
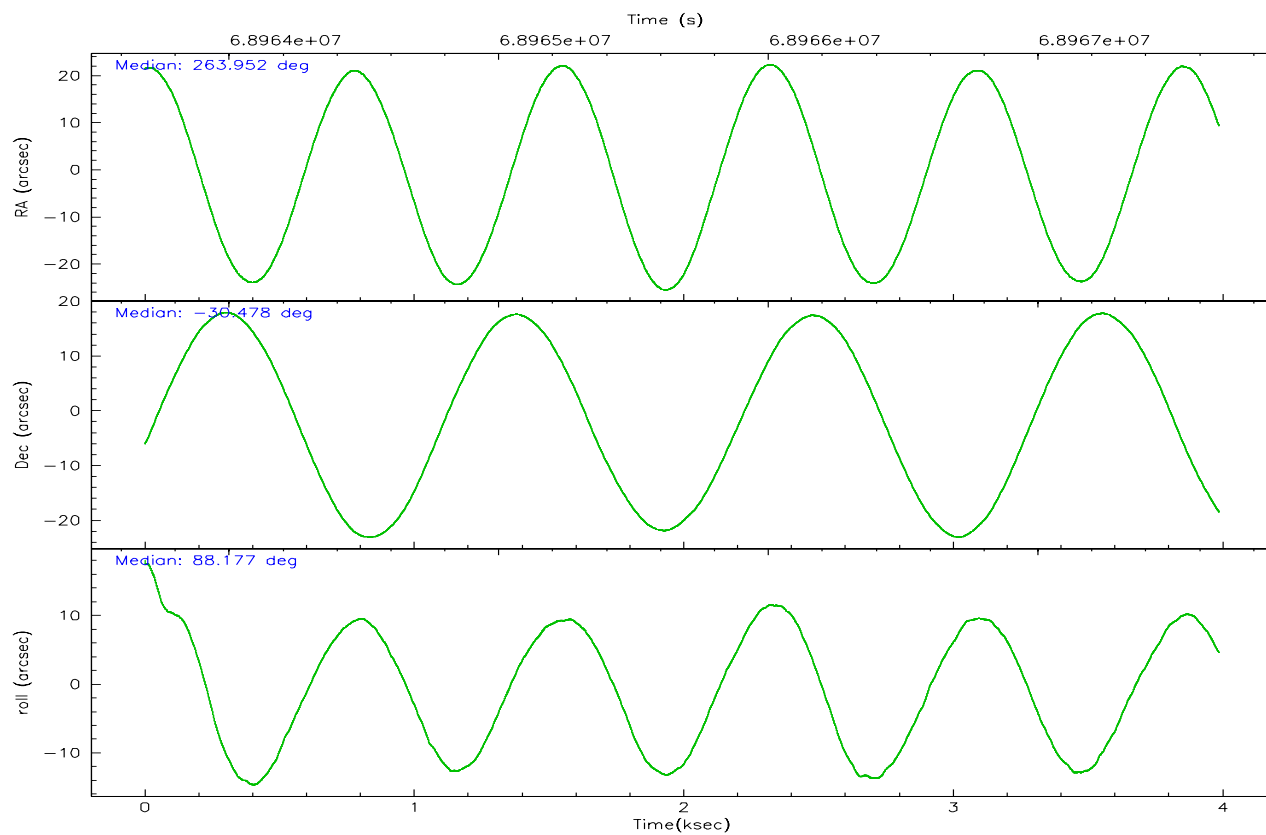
	segment 0
level 1 events	165073
rejected events	13362
rejected %	8%

2.2 Compared Parameters

Parameter	Planned	Actual	Parameter	Planned	Actual
Instrument	HRC	HRC	Obspar format version number	6	6
Detector	HRC-I	HRC-I	Obspar file type	PREDICTED	ACTUAL
Grating	NONE	NONE	Obspar update status	OVERRIDE	OVERRIDE
Data mode	OBSERVING	OBSERVING			
Observation mode	POINTING	POINTING			
Pointing RA	263.9516085081481	263.9516085081481			
Pointing Dec	-30.47825503463377	-30.47825503463377			
Pointing Roll	88.1854925060605	88.1854925060605			
SIM focus pos (mm)	-1.0388663562	-1.0388663562			
SIM defocus (mm)	0.00142623215544524	0.00142623215544524			
SIM translation stage pos (mm)	126.98549431	126.98549431			
SIM translation stage offset (mm)	-4.712205736723263e-09	-4.712205736723263e-09			
Observation start time	68963659.22847877	68963659.22847877			
Observation start date	2000-03-09T04:41:50	2000-03-09T04:34:19			
Observation end time	68967884.27863309	68967884.27863309			
Observation end date	2000-03-09T05:40:10	2000-03-09T05:44:44			

2.3 Aspect



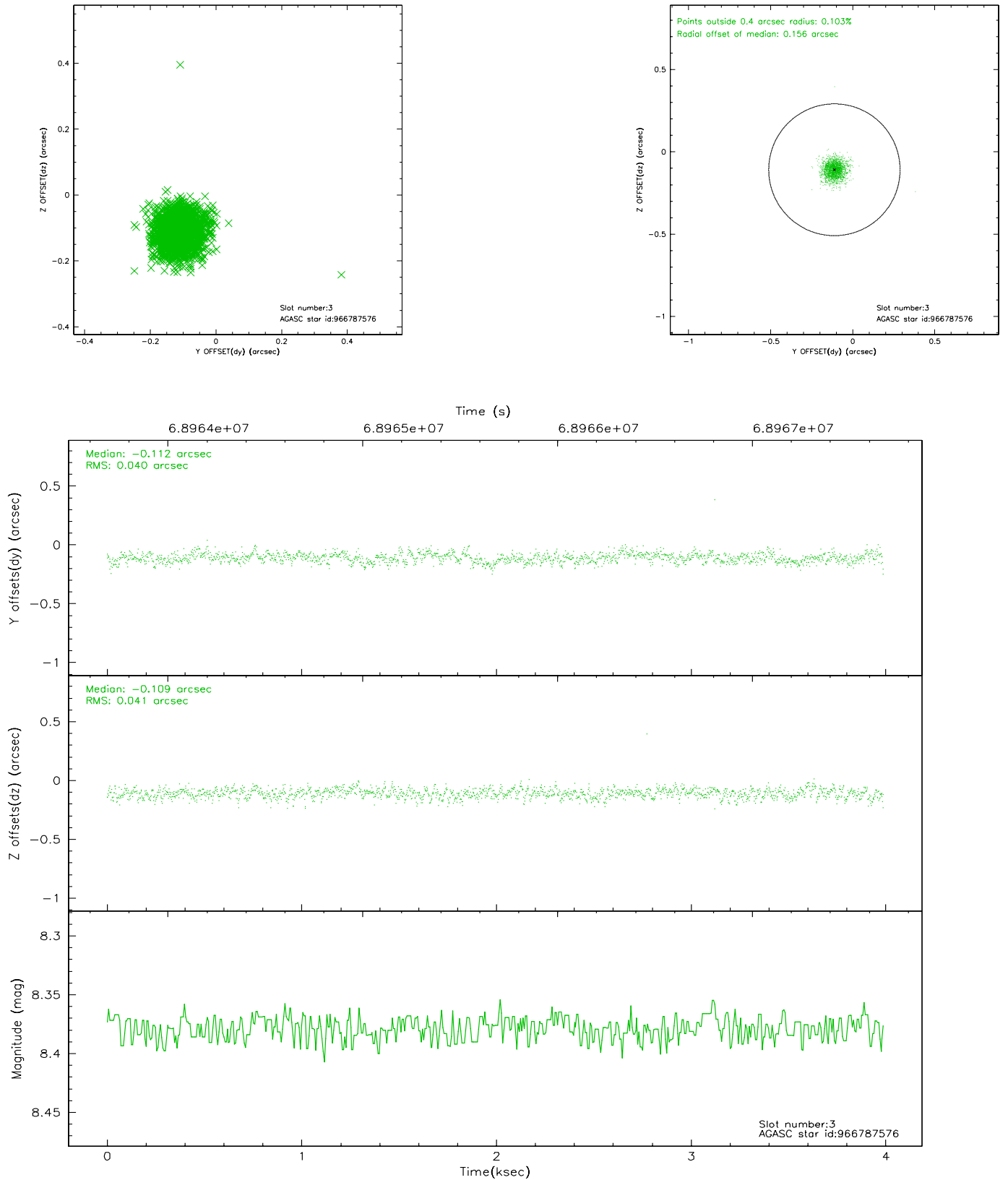


Slot Statistics

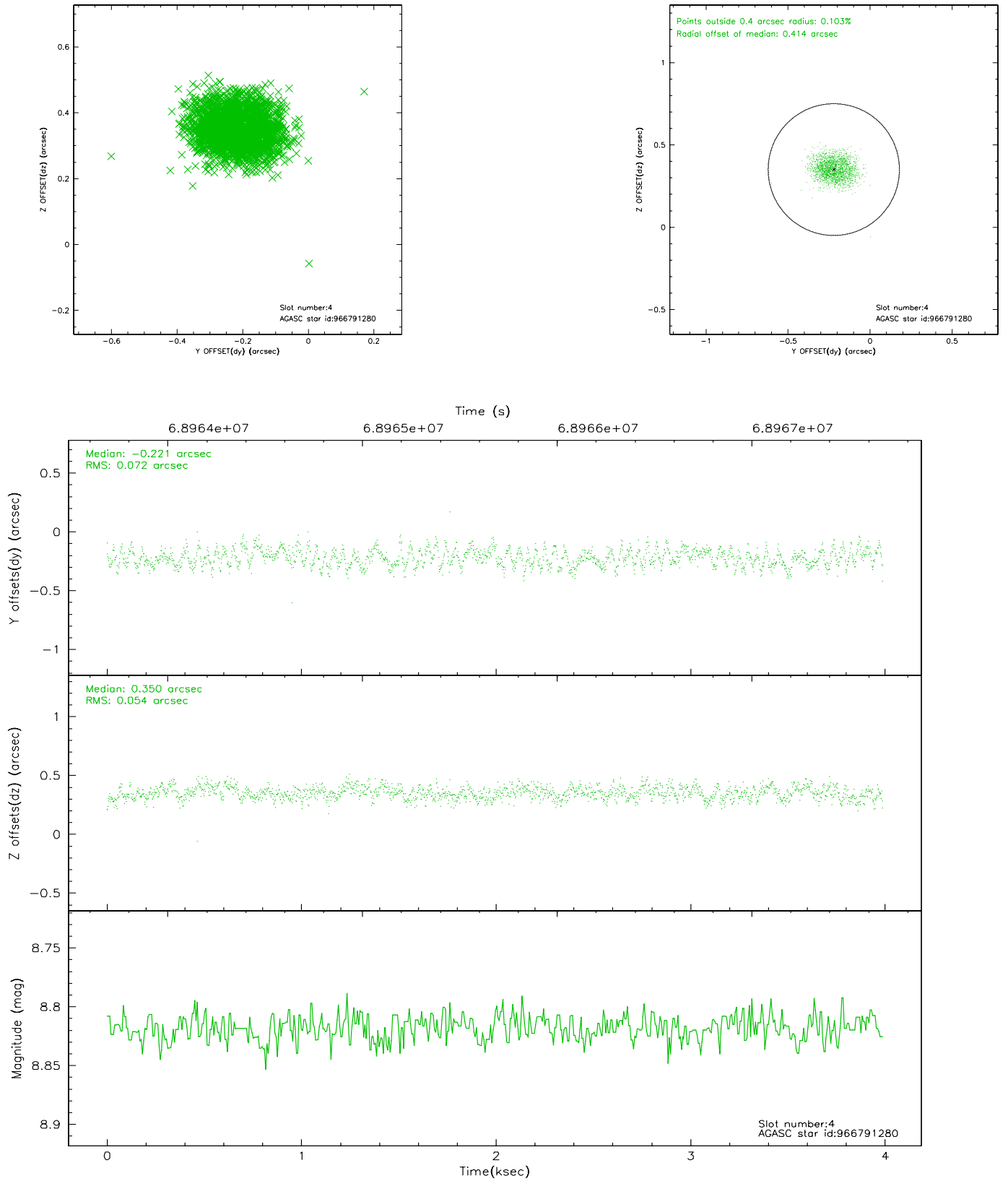
slot	status	id	mag	n_pts	med_dy	med_dz	dr1	dr2	ra	dec	mean_y	mean_z
0	FID	HRC-I-1	6.95	973	0.066	0.002	0.008	0.017	0.000000	0.000000	-756.50	-1290.34
1	FID	HRC-I-3	7.04	973	0.035	-0.028	0.007	0.013	0.000000	0.000000	-1185.76	1012.88
2	FID	HRC-I-4	6.98	973	0.012	-0.063	0.006	0.012	0.000000	0.000000	1285.05	1012.78
3	GUIDE	966787576	8.38	1946	-0.112	-0.109	0.058	0.096	263.799240	-30.200030	1070.50	554.12
4	GUIDE	966791280	8.82	1944	-0.221	0.350	0.096	0.148	264.697563	-30.131393	1394.96	-2233.31
5	GUIDE	966792224	9.29	1946	0.224	-0.146	0.097	0.154	263.361234	-31.047299	-2022.36	1807.09
6	GUIDE	966787088	9.64	1945	0.222	-0.273	0.112	0.183	263.274822	-30.999991	-1863.48	2081.55
7	GUIDE	966789840	9.72	1944	-0.113	0.180	0.111	0.178	264.484364	-30.044920	1688.46	-1561.18

2.4 Star Slots

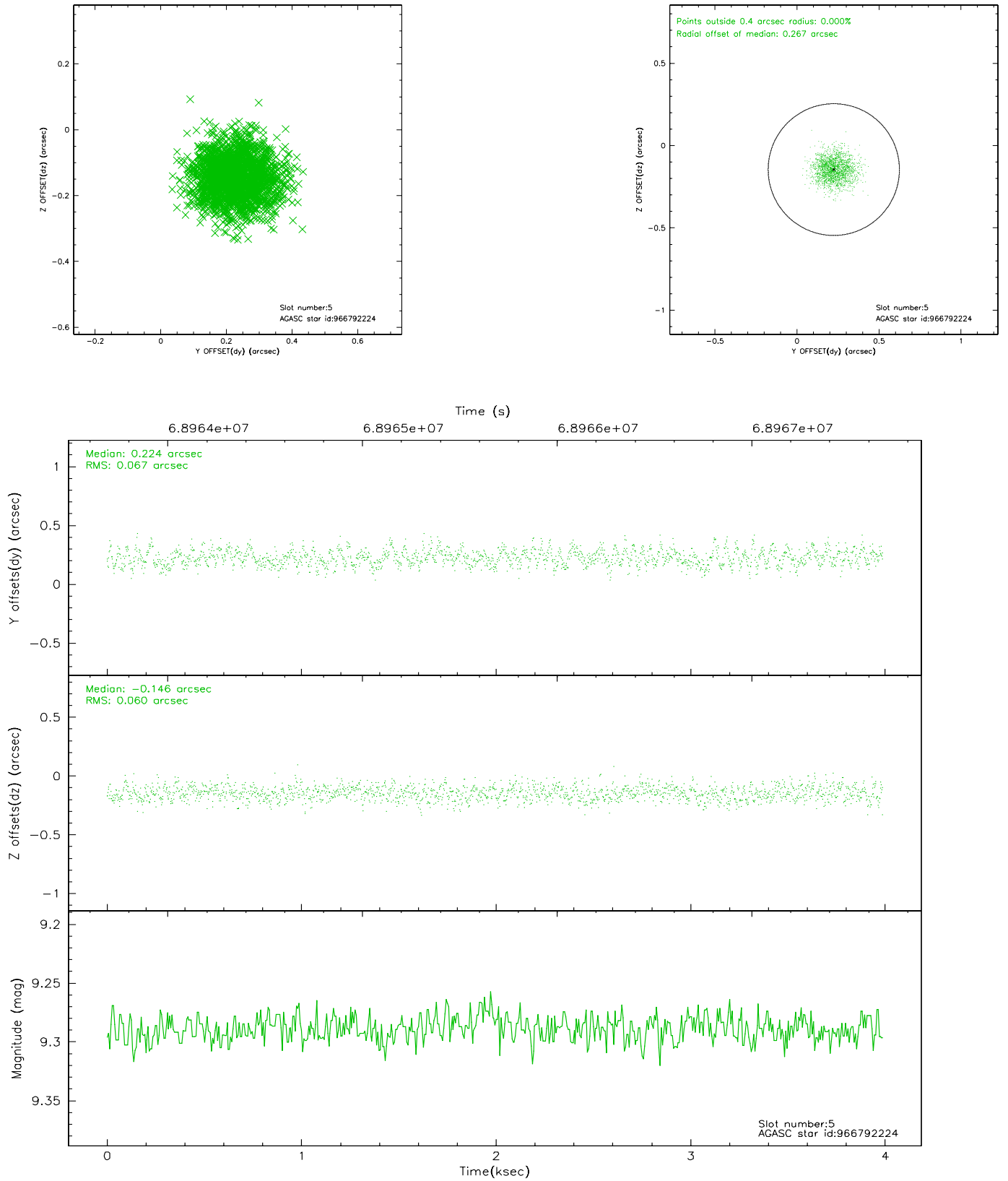
2.4.1 Slot 3



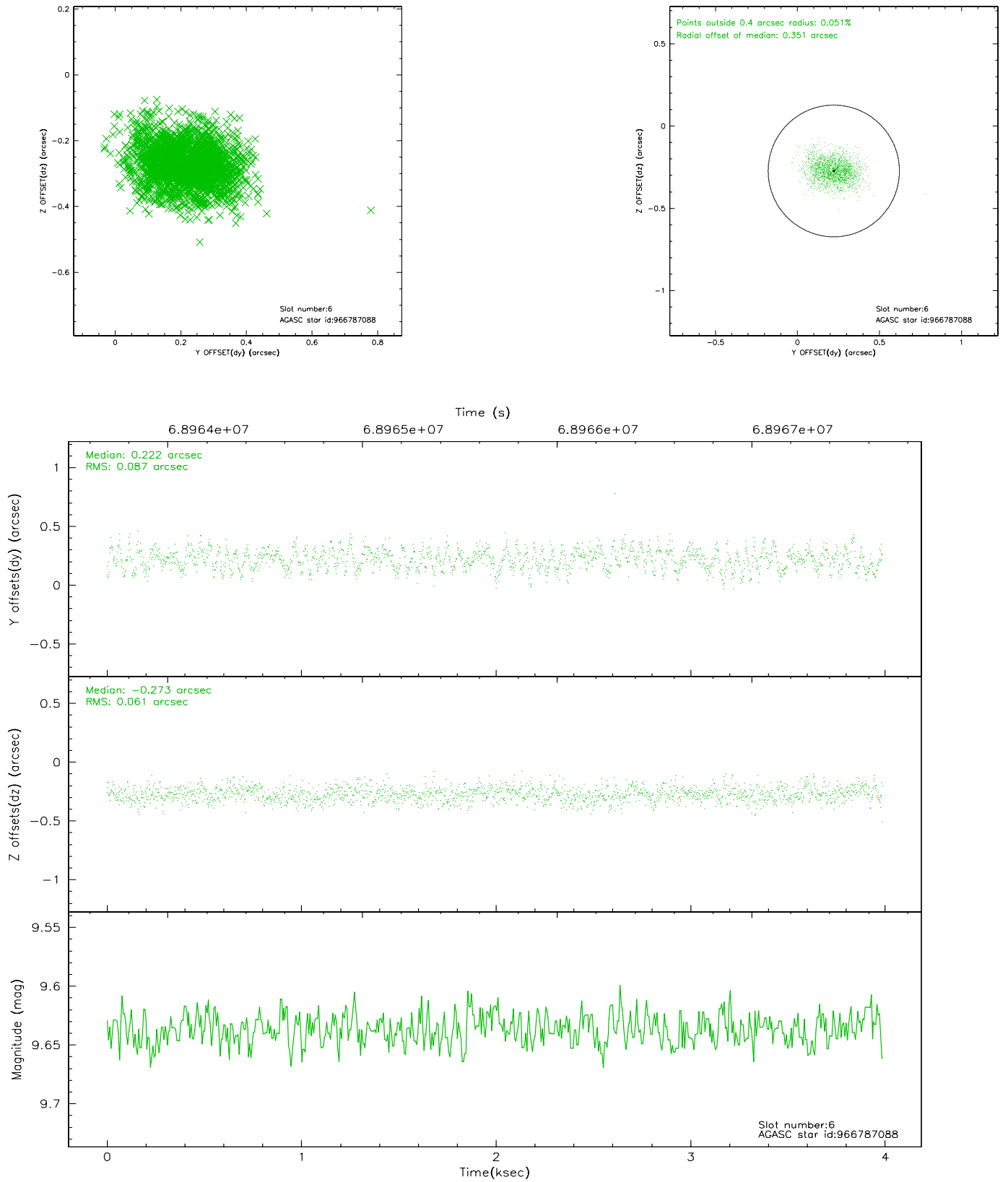
2.4.2 Slot 4



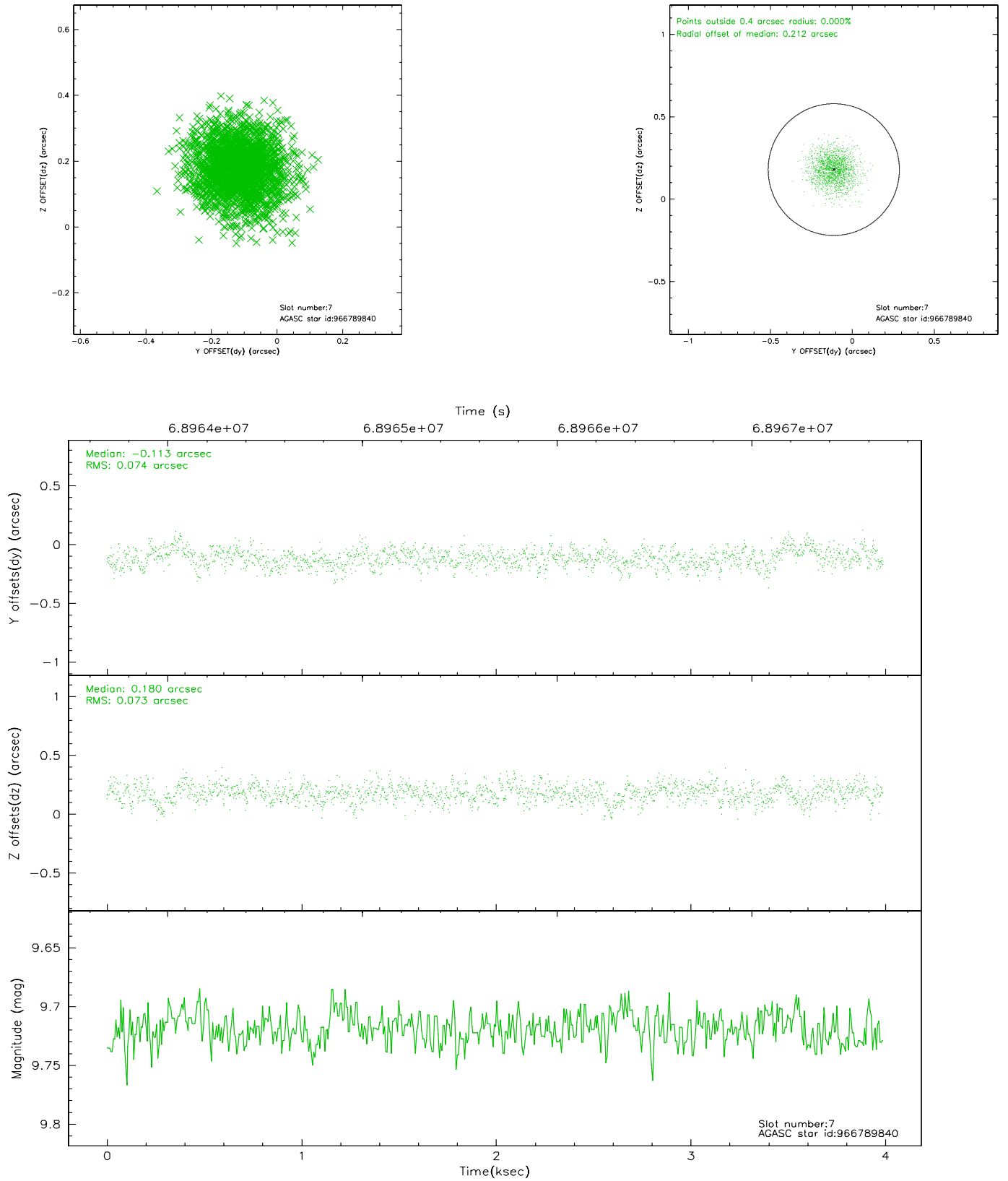
2.4.3 Slot 5



2.4.4 Slot 6

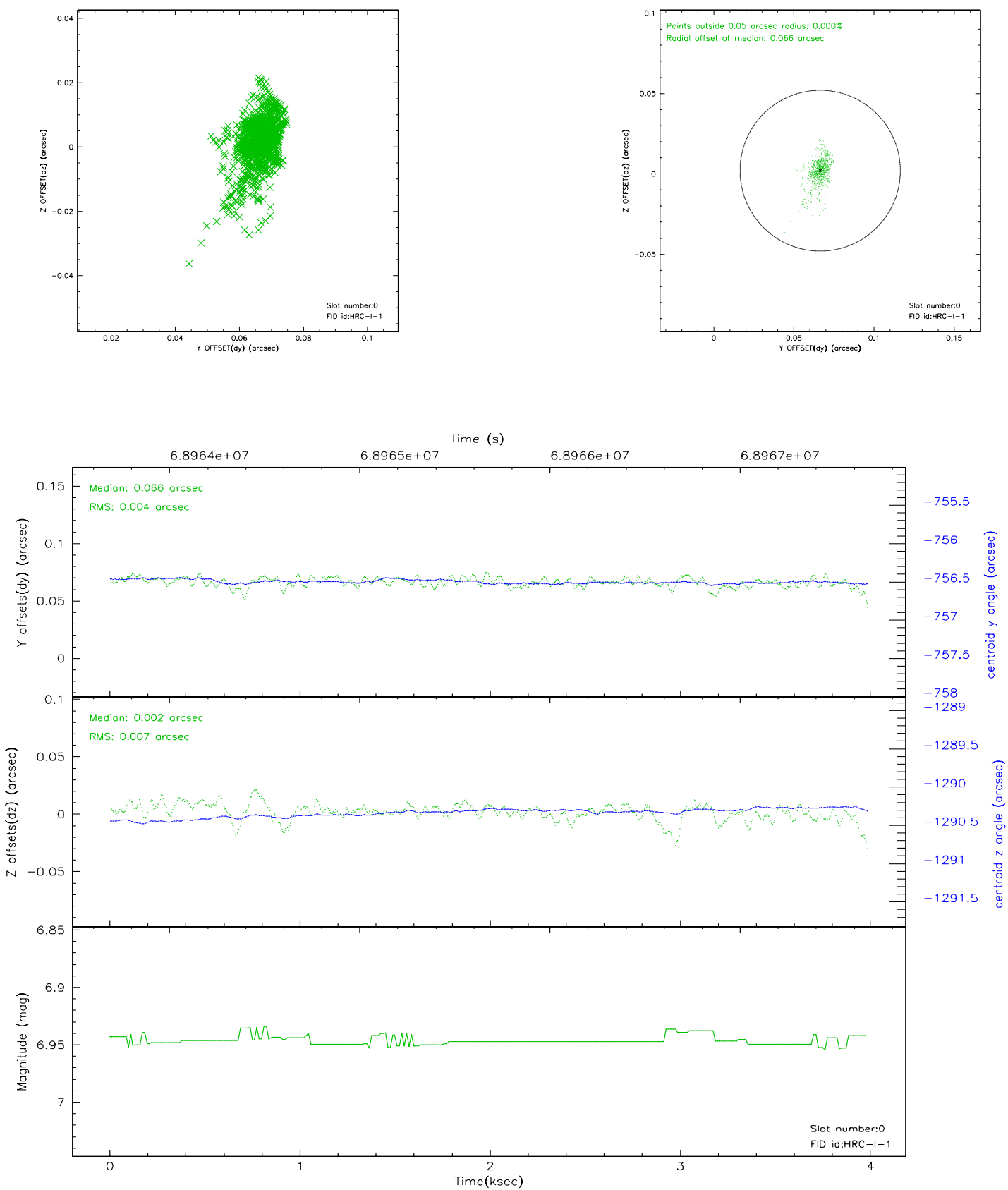


2.4.5 Slot 7

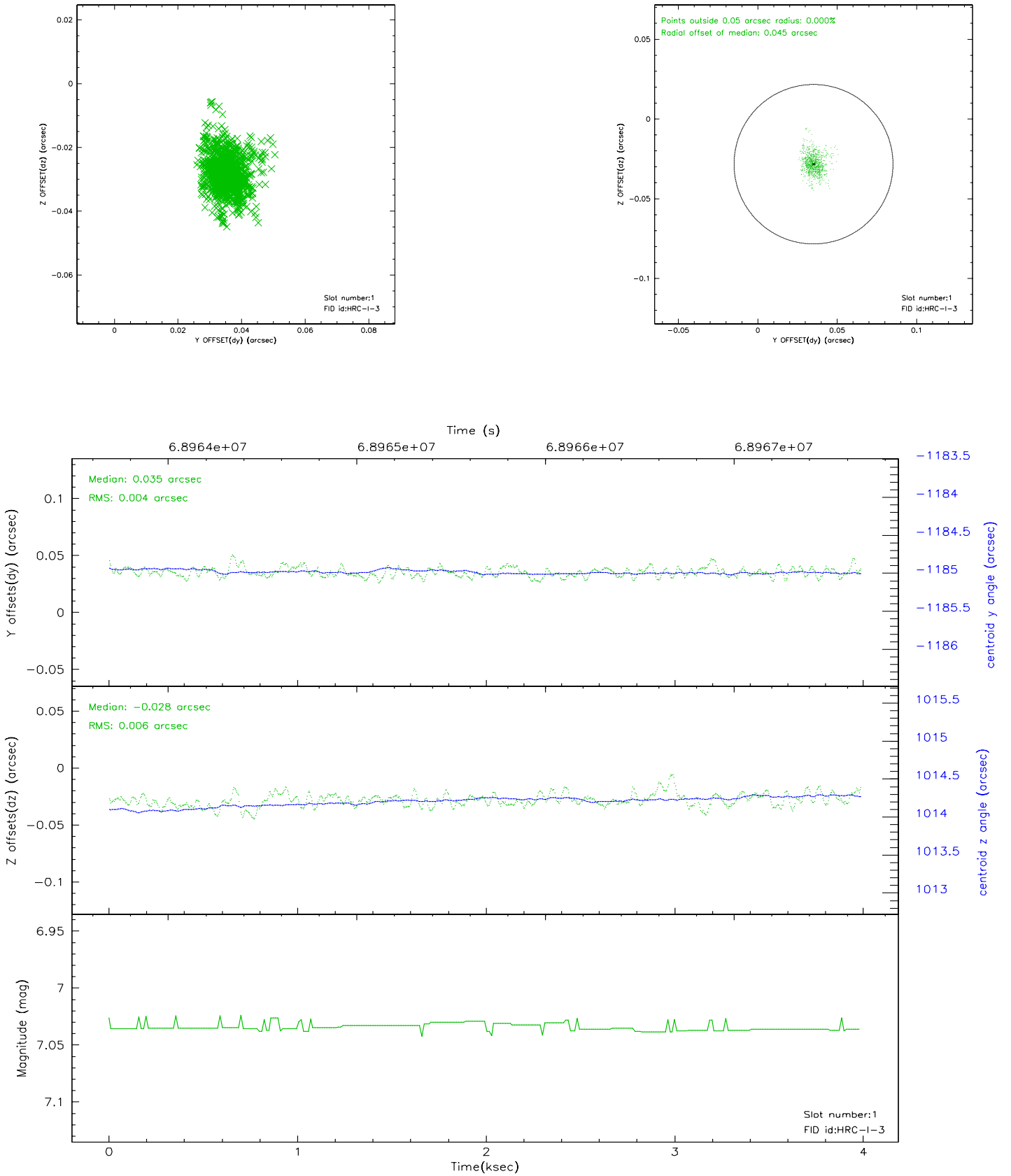


2.5 FID Slots

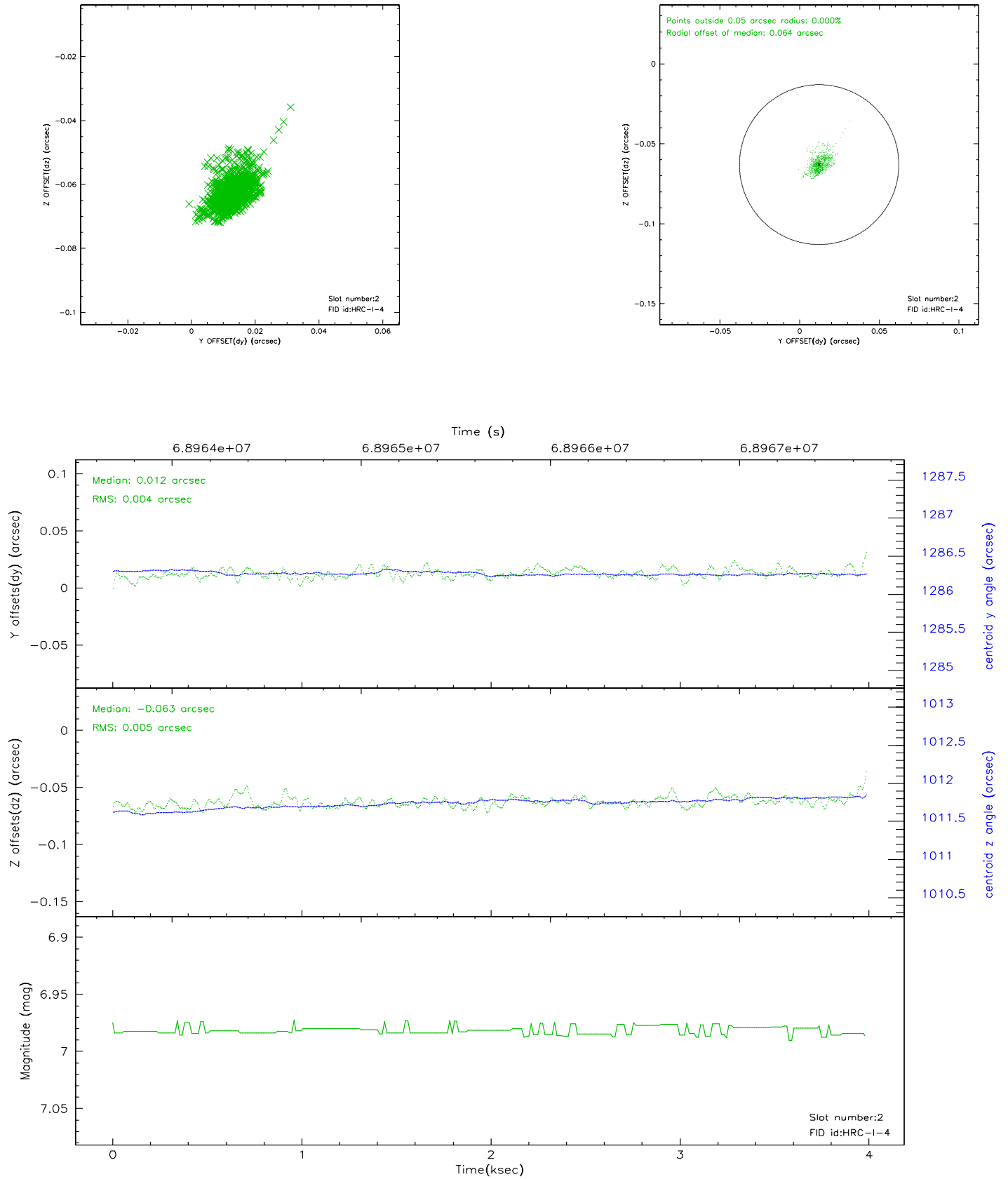
2.5.1 Slot 0



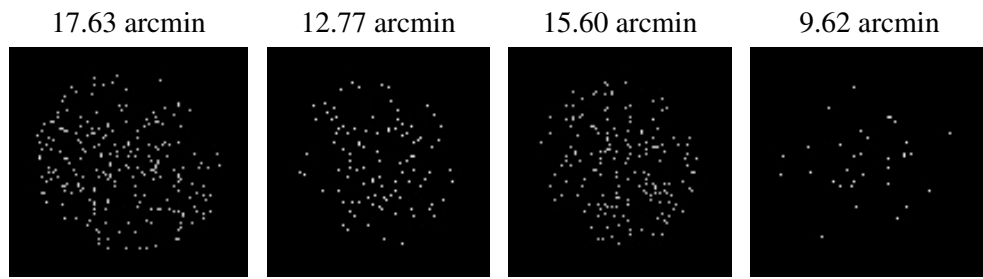
2.5.2 Slot 1



2.5.3 Slot 2



3 Point Sources



A Summary

A.1 Status

V&V Scientist	Beth Sundheim
V&V Date (YYYY-MM-DD)	2009.02.05
V&V Edition	1
V&V Disposition and Status	OK
V&V Charge Time	3.86

A.2 Comments

This obsid was reprocessed to correct minor errors in parameters used in processing. Some of these parameters cannot be determined automatically for this observation and were derived from spacecraft telemetry.

Charge time for this obsid remains at original value of 3.86 ks, although with the current processing the charge time would have been 3.66 ksec.