

V&V Reference Report

L2 ASCDS Version : 8.4.5

Observation 109 - L2 Version 5
Chandra X-Ray Center

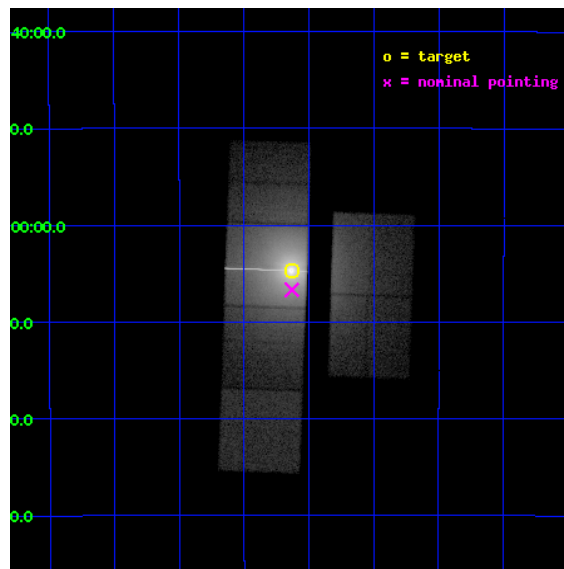
L2 Processing Date : Aug 31 2012

Contents

1	Front	2
2	OBI	3
2.1	OBI	3
2.1.1	Images	3
2.1.2	Parameters	4
2.1.3	Events	4
2.2	Compared Parameters	5
2.3	Aspect	6
2.4	Star Slots	9
2.4.1	Slot 3	9
2.4.2	Slot 4	10
2.4.3	Slot 5	11
2.4.4	Slot 6	12
2.4.5	Slot 7	13
2.5	FID Slots	14
2.5.1	Slot 0	14
2.5.2	Slot 1	15
2.5.3	Slot 2	16
A	Summary	17
A.1	Status	17
A.2	Comments	17

1 Front

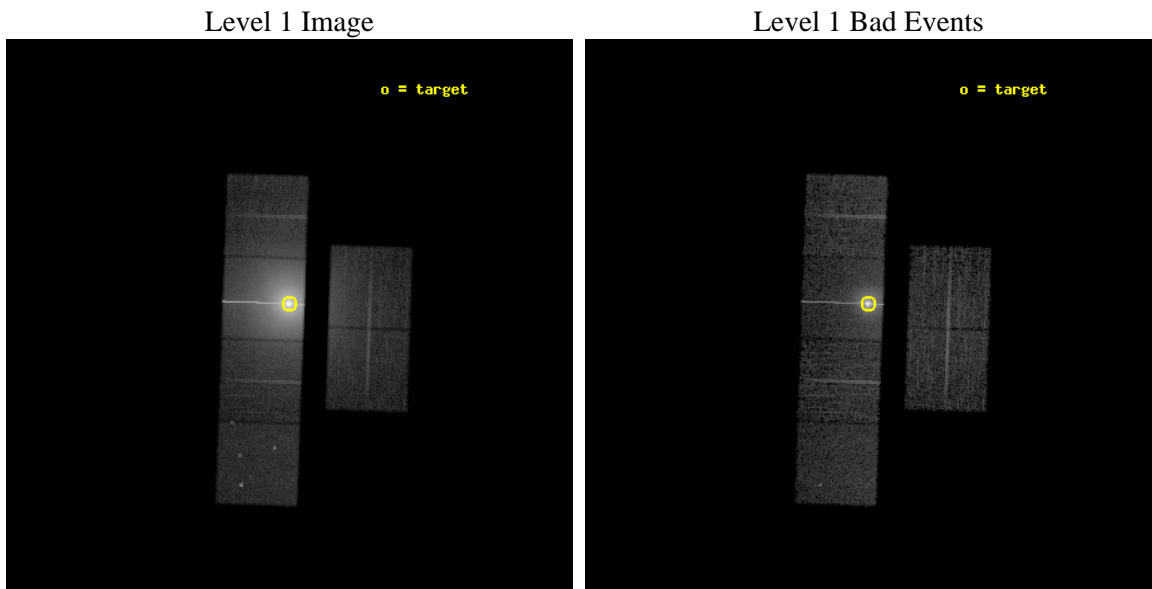
seq_num	400022	Sequence number
obs_id	109	Observation id
title	X-RAY SCATTERING HALO	Proposal title
observer	Dr. Peter Predehl	Principal investigator
object	GX 5-1	Source name
dtcycle	0	
cycle	P	events from which exps? Prim/Second/Both
ra_targ	270.28375	Observer's specified target RA [deg]
dec_targ	-25.077778	Observer's specified target Dec [deg]
ra_nom	270.28298465494	Nominal RA [deg]
dec_nom	-25.111553034335	Nominal Dec [deg]
roll_nom	271.99654680377	Nominal Roll [deg]
revision	5	Processing version of data
ontime	6953.6000064611	Sum of GTIs [s]
livetime	6865.5493362241	Livetime [s]
ontime2	6953.6000064611	Sum of GTIs [s]
ontime3	6953.6000064611	Sum of GTIs [s]
ontime5	6953.6000064611	Sum of GTIs [s]
ontime6	6953.6000064611	Sum of GTIs [s]
ontime7	6953.6000064611	Sum of GTIs [s]
ontime8	6953.6000064611	Sum of GTIs [s]
l2events	1460104	Number of level 2 events



2 OBI

2.1 OBI

2.1.1 Images



2.1.2 Parameters

obi_num	0	Obi number	sched_exp_time	7000.000000	[s] Scheduled observation exposure time
ascdsver	8.4.5	Processing system revision	ontime	6953.6000064611	Sum of GTIs [s]
caldsver	4.5.1.1	 	ontime2	6953.6000064611	Sum of GTIs [s]
date	2012-08-31T13:08:43	Date and time of file creation	ontime3	6953.6000064611	Sum of GTIs [s]
revision	5	Processing version of data	ontime5	6953.6000064611	Sum of GTIs [s]
			ontime6	6953.6000064611	Sum of GTIs [s]
			ontime7	6953.6000064611	Sum of GTIs [s]
			ontime8	6953.6000064611	Sum of GTIs [s]
			l1events	1888617	Number of level 1 events

2.1.3 Events

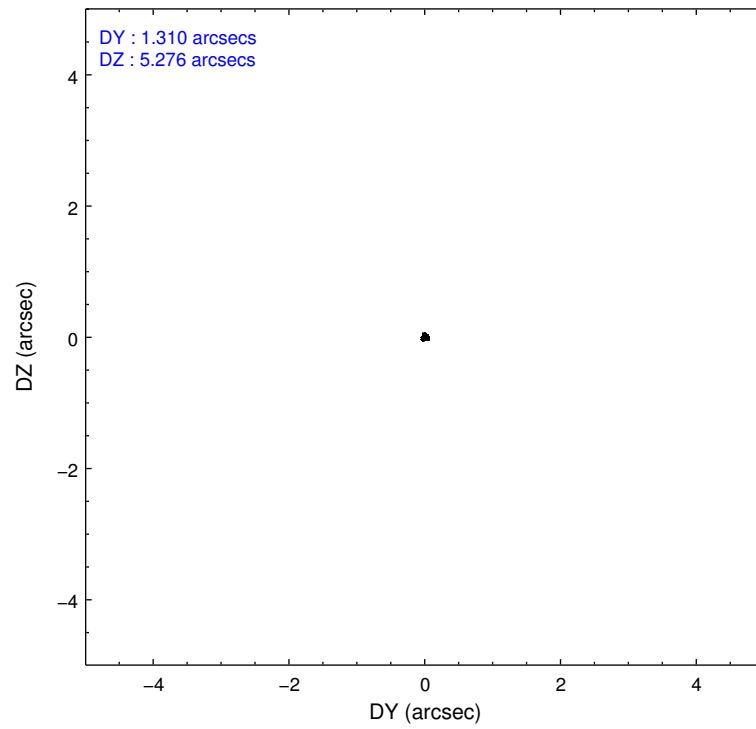
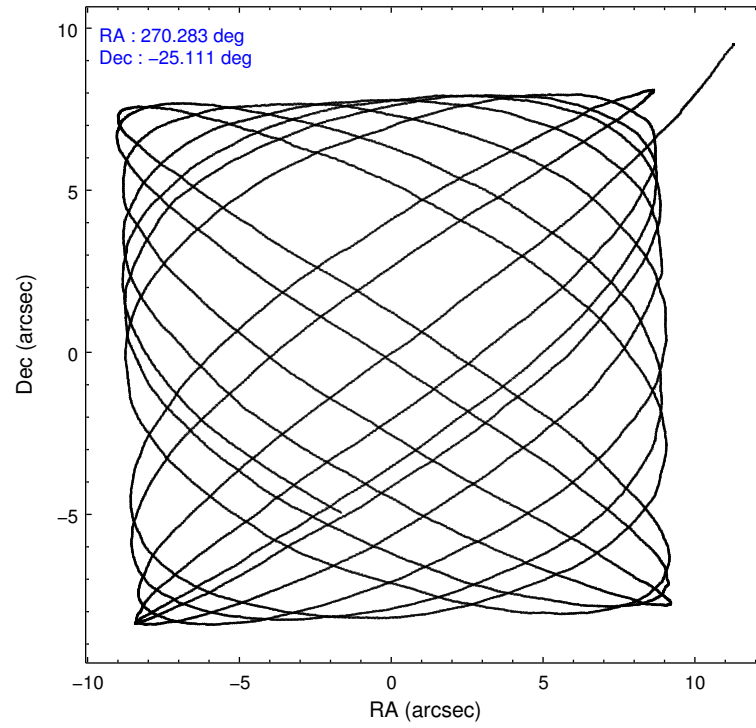
	ccd 2	ccd 3	ccd 5	ccd 6	ccd 7	ccd 8		ccd 2	ccd 3	ccd 5	ccd 6	ccd 7	ccd 8
level 1 events	67069	86056	61773	90767	1495083	87869	grade 0 events	20158	35258	4630	37526	173626	30932
rejected events	36992	35856	29936	35714	210093	39808		30%	40%	7%	41%	11%	35%
rejected %	55%	41%	48%	39%	14%	45%	grade 1 events	62	135	257	133	4454	116
								0%	0%	0%	0%	0%	0%
							grade 2 events	5014	7521	10310	9192	399359	7597
								7%	8%	16%	10%	26%	8%
							grade 3 events	1358	2177	922	2242	100923	2632
								2%	2%	1%	2%	6%	2%
							grade 4 events	1356	2205	892	2388	99112	2583
								2%	2%	1%	2%	6%	2%
							grade 5 events	1323	1416	2702	1528	35303	1897
								1%	1%	4%	1%	2%	2%
							grade 6 events	2207	3061	15096	3724	512583	4334
								3%	3%	24%	4%	34%	4%
							grade 7 events	35591	34283	26964	34034	169723	37778
								53%	39%	43%	37%	11%	42%

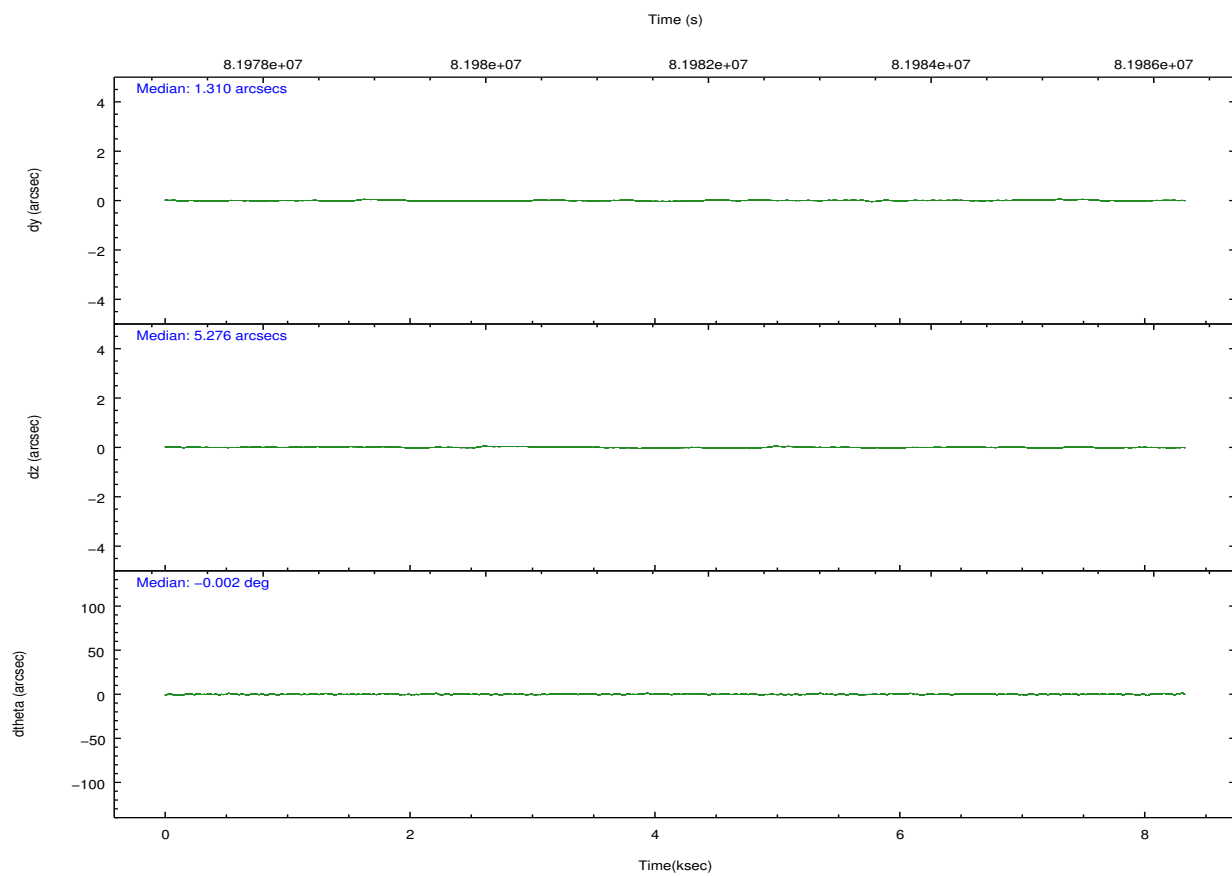
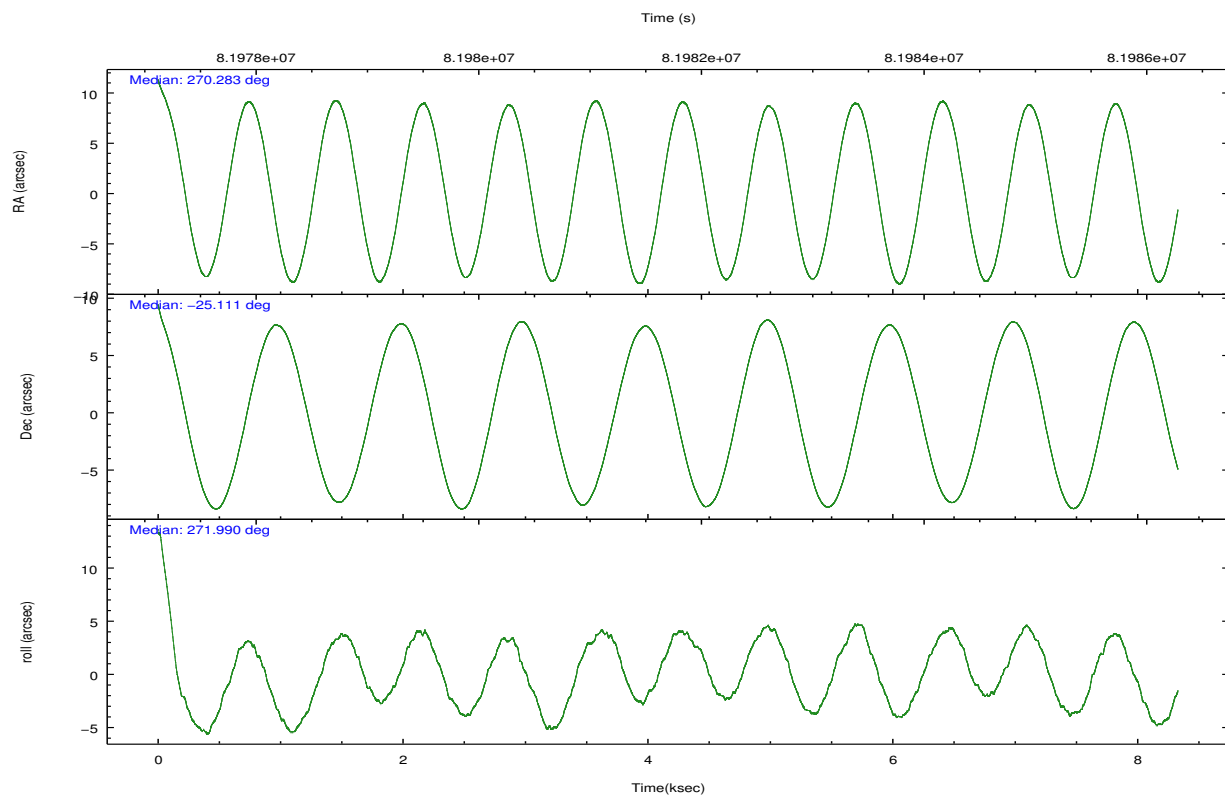
2.2 Compared Parameters

Parameter	Planned	Actual
Instrument	ACIS	ACIS
Detector	ACIS-235678	ACIS-235678
Grating	NONE	NONE
Data mode	GRADED	GRADED
Observation mode	POINTING	POINTING
[deg] Pointing RA	270.266818	270.2829846549437
[deg] Pointing Dec	-25.088437	-25.11155303433453
[deg] Pointing Roll	271.833054	271.996546803767
[mm] SIM focus pos	-0.684267	-0.6828225247311905
[mm] SIM defocus	0	0.001444936568705701
[mm] SIM translation stage pos	-198.132523	-198.1255314476265
[mm] SIM translation stage offset	8	7.993008864618645
[s] Observation start time (MET)	81978723.184000	81977172.970079
Observation start date	2000-08-06T19:50:59	2000-08-06T19:26:12
[s] Observation end time (MET)	81985723.184000	81986589.13293
Observation end date	2000-08-06T21:47:39	2000-08-06T22:03:09
Read mode	TIMED	TIMED

Parameter	Planned	Actual
Obspar format version number	7	7
Obspar file type	PREDICTED	ACTUAL
Obspar update status	NONE	UPDATED
Number of optional ACIS chips dropped	0	0
On-chip summing requested	N	N
Subarray requested	NONE	NONE
Alternating exposures requested	N	N
[s] Primary exposure time	0.000000	3.2

2.3 Aspect



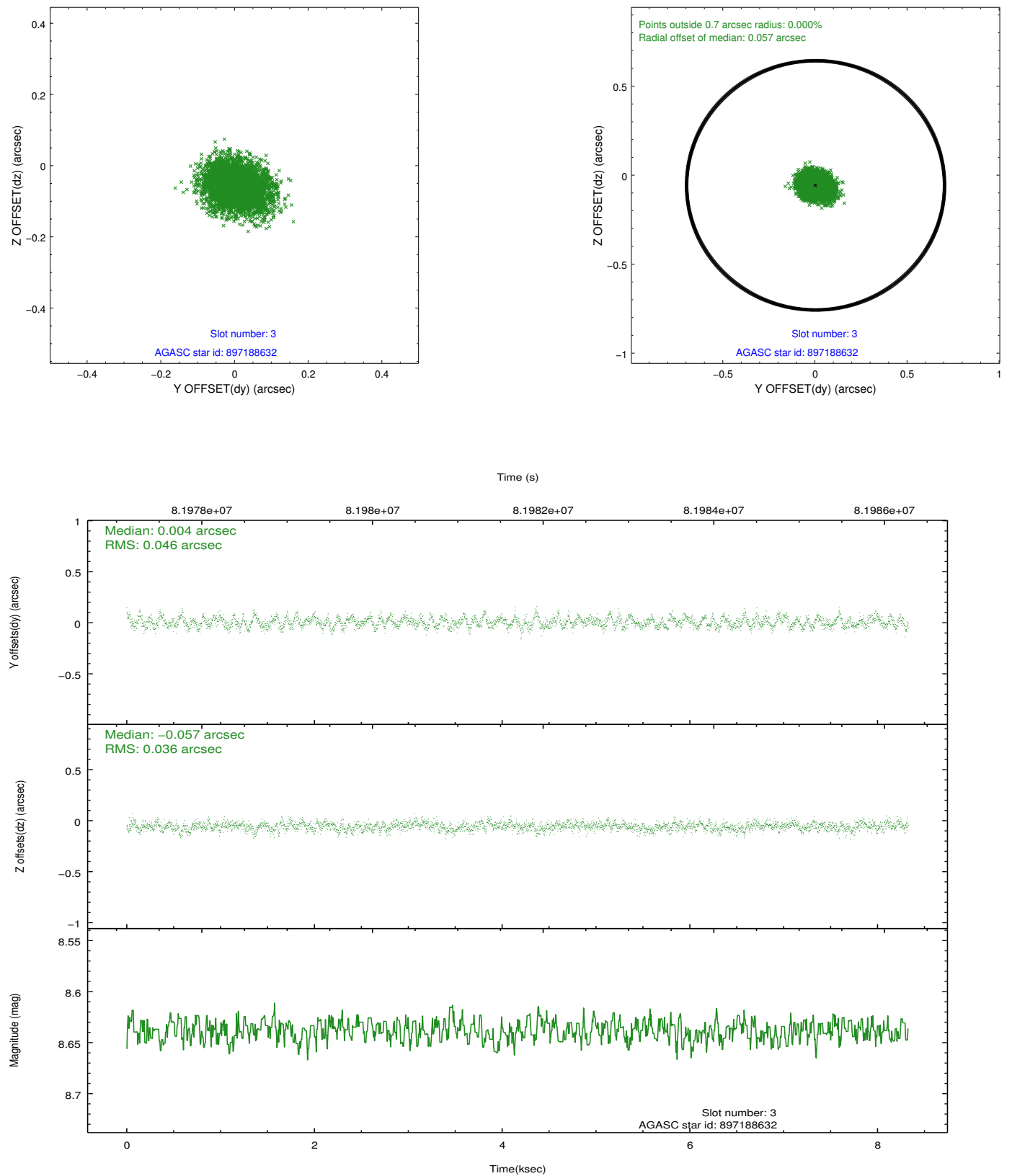


Slot Statistics

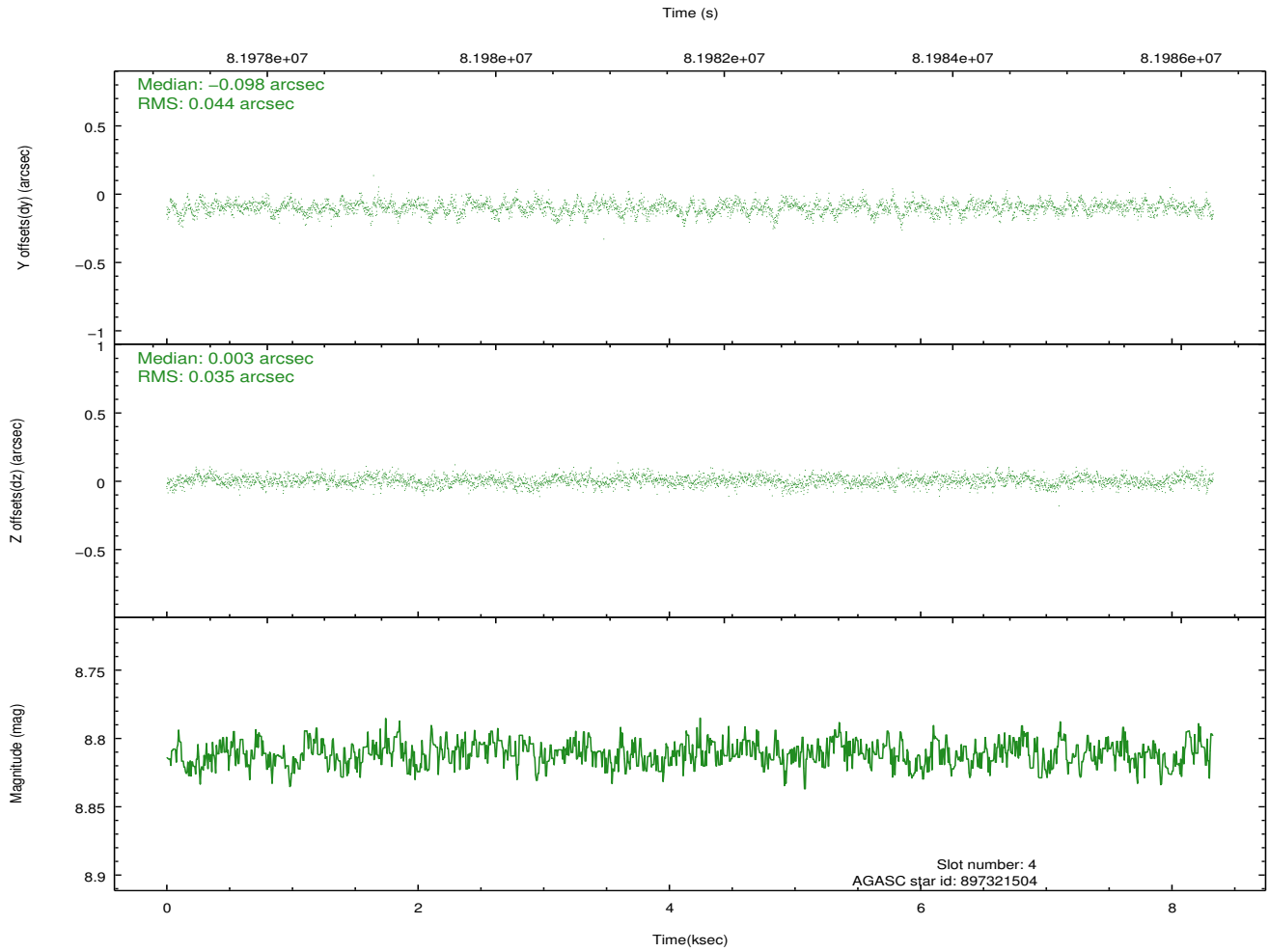
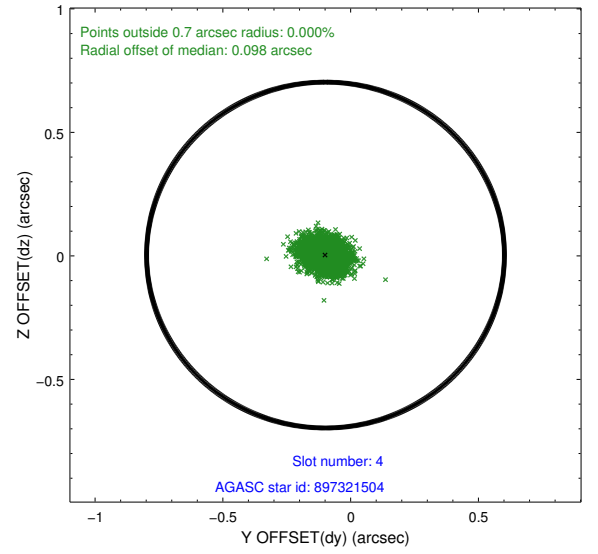
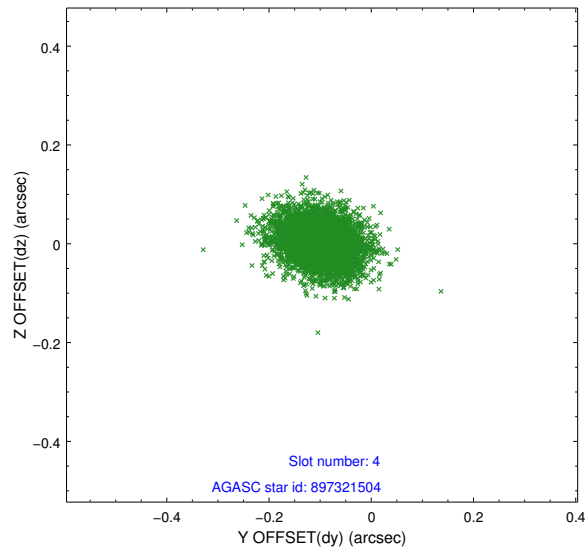
slot	status	id	mag	n_pts	med_dy	med_dz	dr1	dr2	ra	dec	mean_y	mean_z
0	FID	ACIS-S-2	7.13	2032	0.051	0.112	0.007	0.011	0.000000	0.000000	-754.41	-1561.56
1	FID	ACIS-S-4	7.24	2032	-0.043	-0.055	0.006	0.010	0.000000	0.000000	2158.55	346.04
2	FID	ACIS-S-5	7.23	2032	-0.040	-0.048	0.007	0.012	0.000000	0.000000	-1806.40	340.64
3	GUIDE	897188632	8.64	4063	0.004	-0.057	0.062	0.101	269.725883	-25.281908	644.89	-1782.05
4	GUIDE	897321504	8.81	4064	-0.098	0.003	0.059	0.099	270.176705	-24.677132	-1487.85	-247.59
5	GUIDE	897325632	8.54	4060	-0.081	-0.001	0.053	0.088	270.212330	-24.788521	-1083.90	-143.36
6	GUIDE	897189680	9.38	4060	0.037	-0.139	0.079	0.130	269.757758	-25.189569	315.26	-1669.10
7	GUIDE	897321032	9.38	4059	0.136	0.197	0.091	0.146	270.974244	-25.549551	1740.09	2243.54

2.4 Star Slots

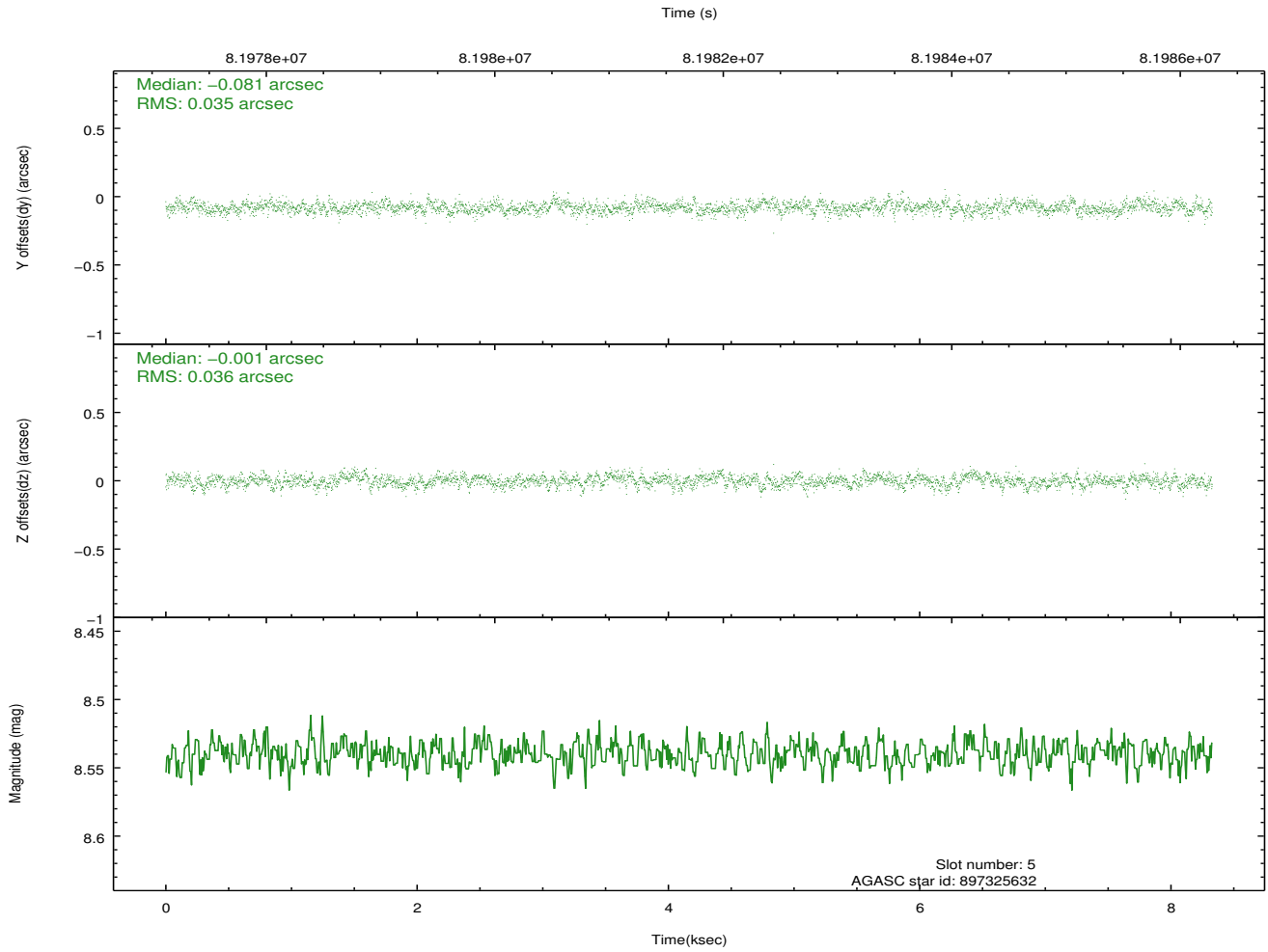
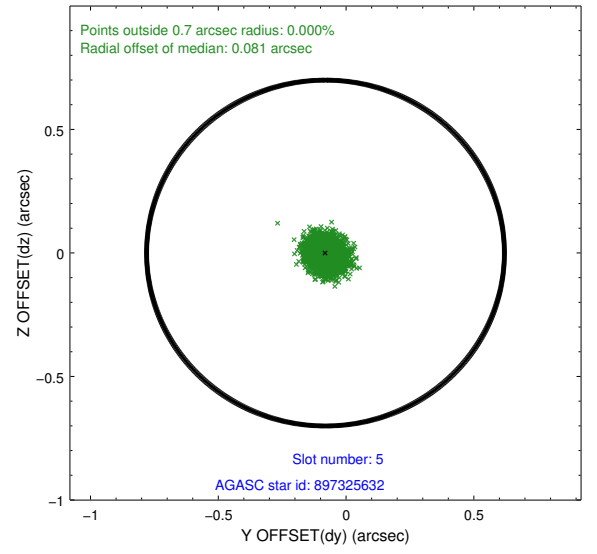
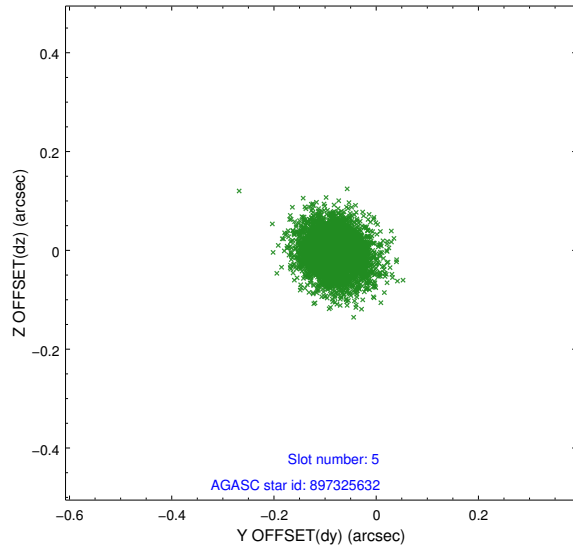
2.4.1 Slot 3



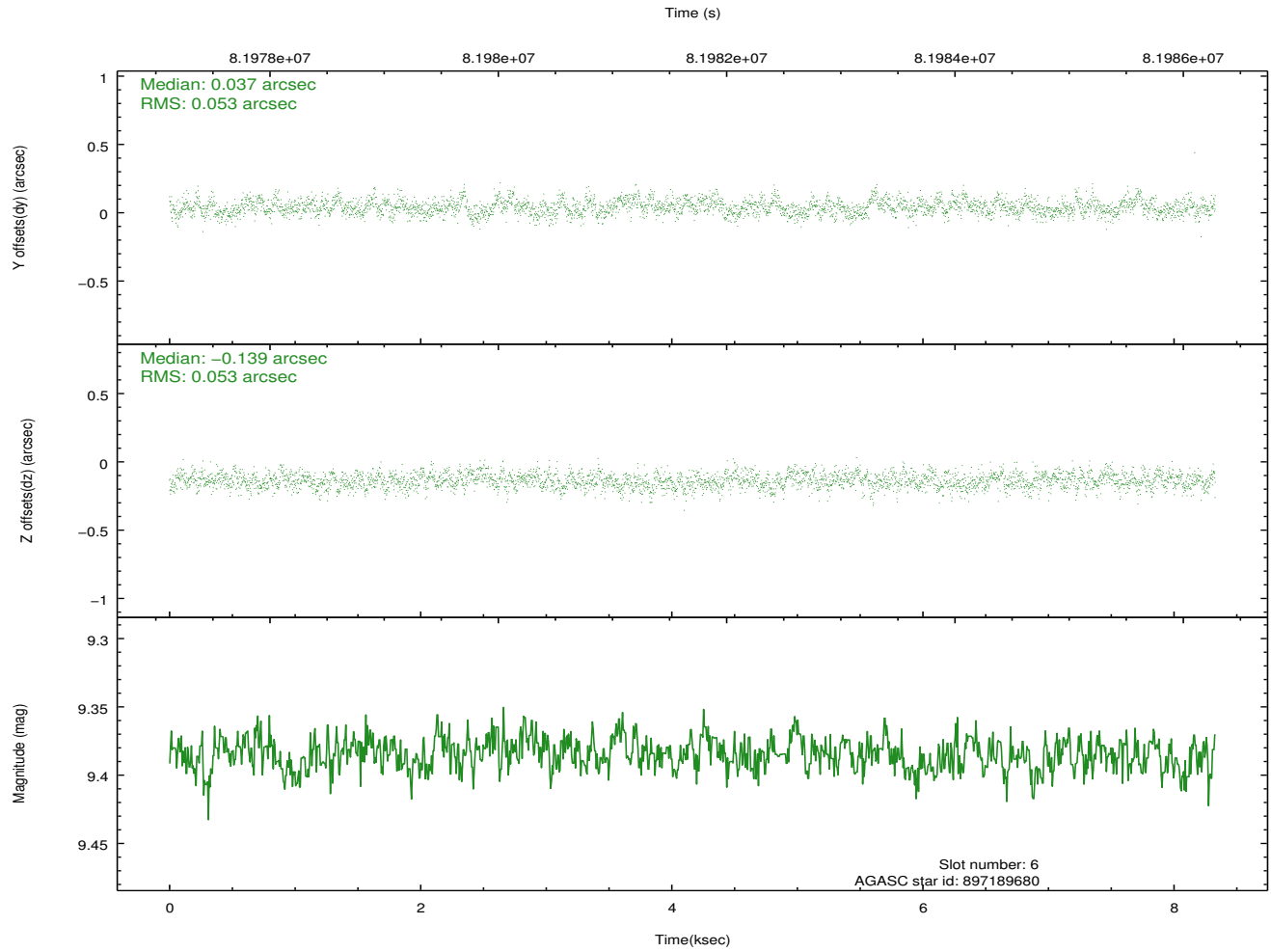
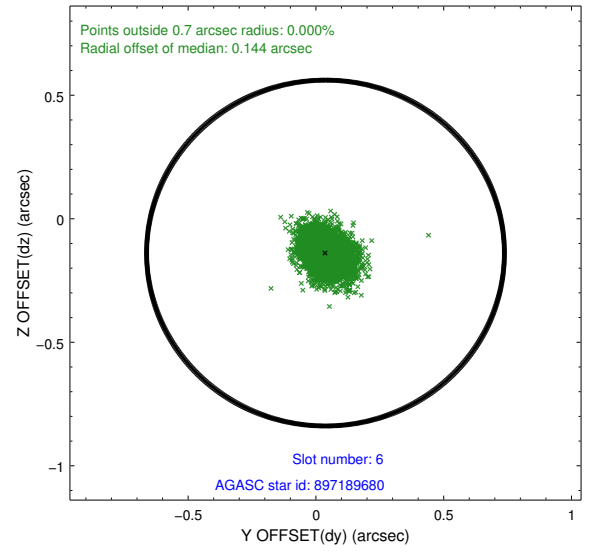
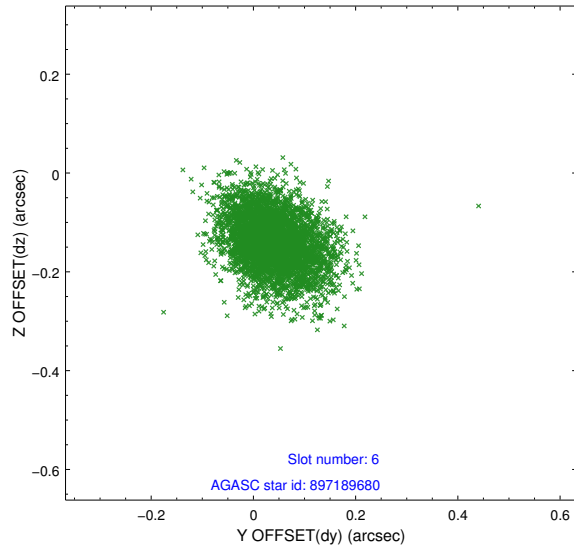
2.4.2 Slot 4



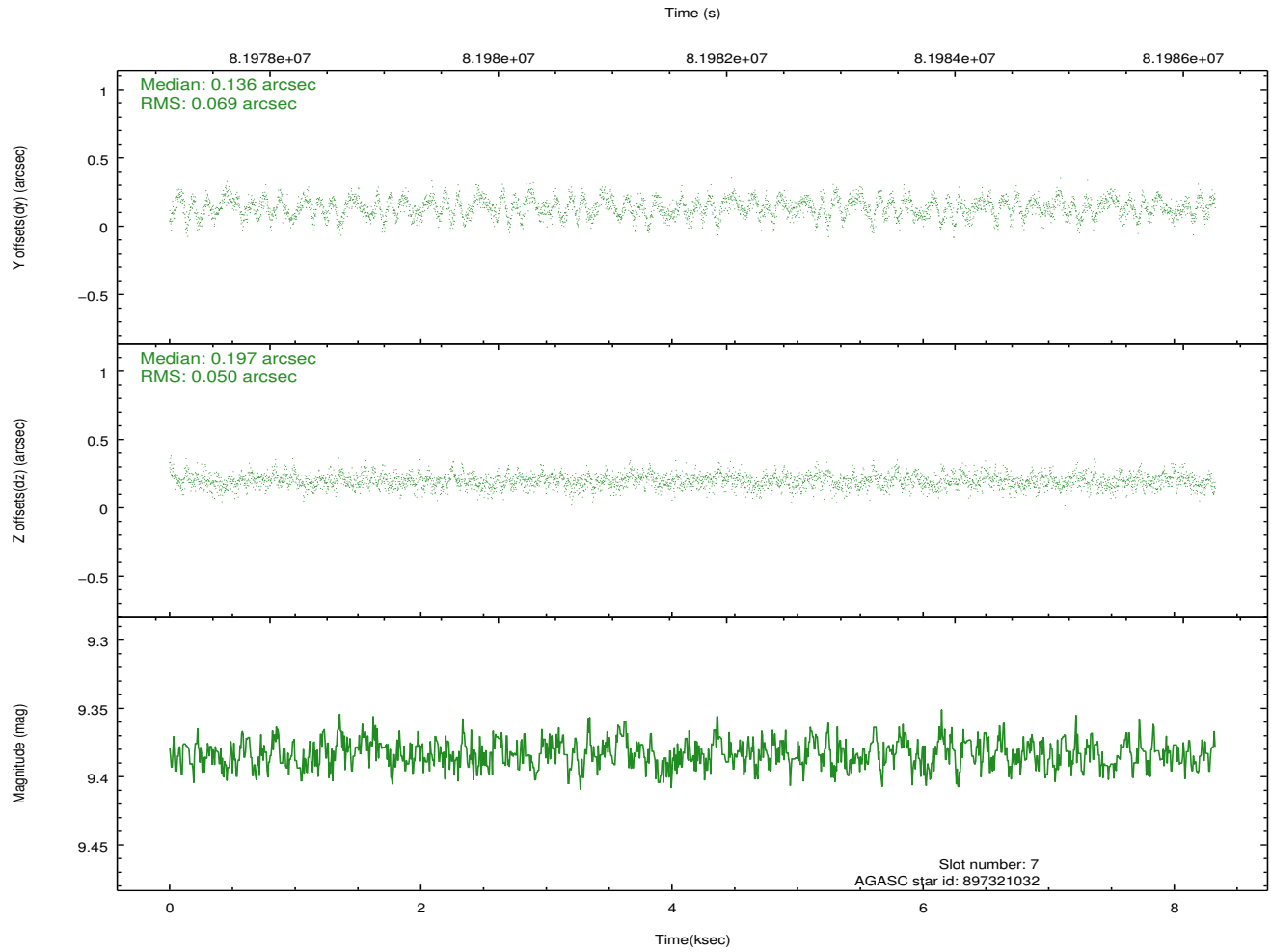
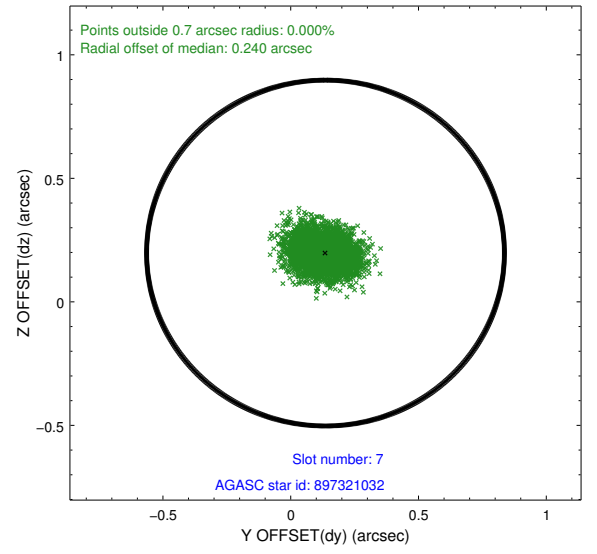
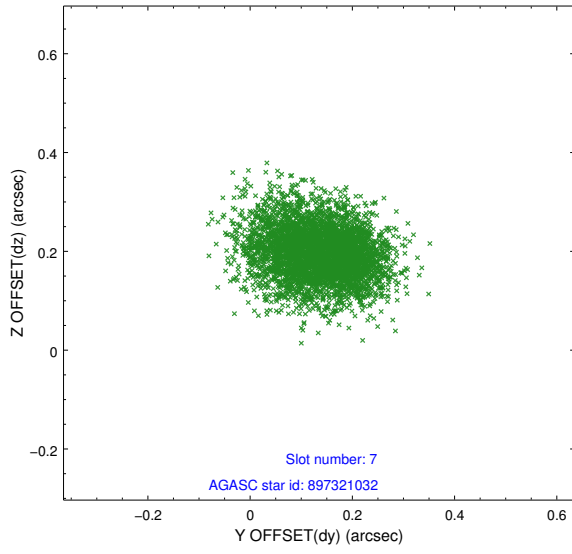
2.4.3 Slot 5



2.4.4 Slot 6

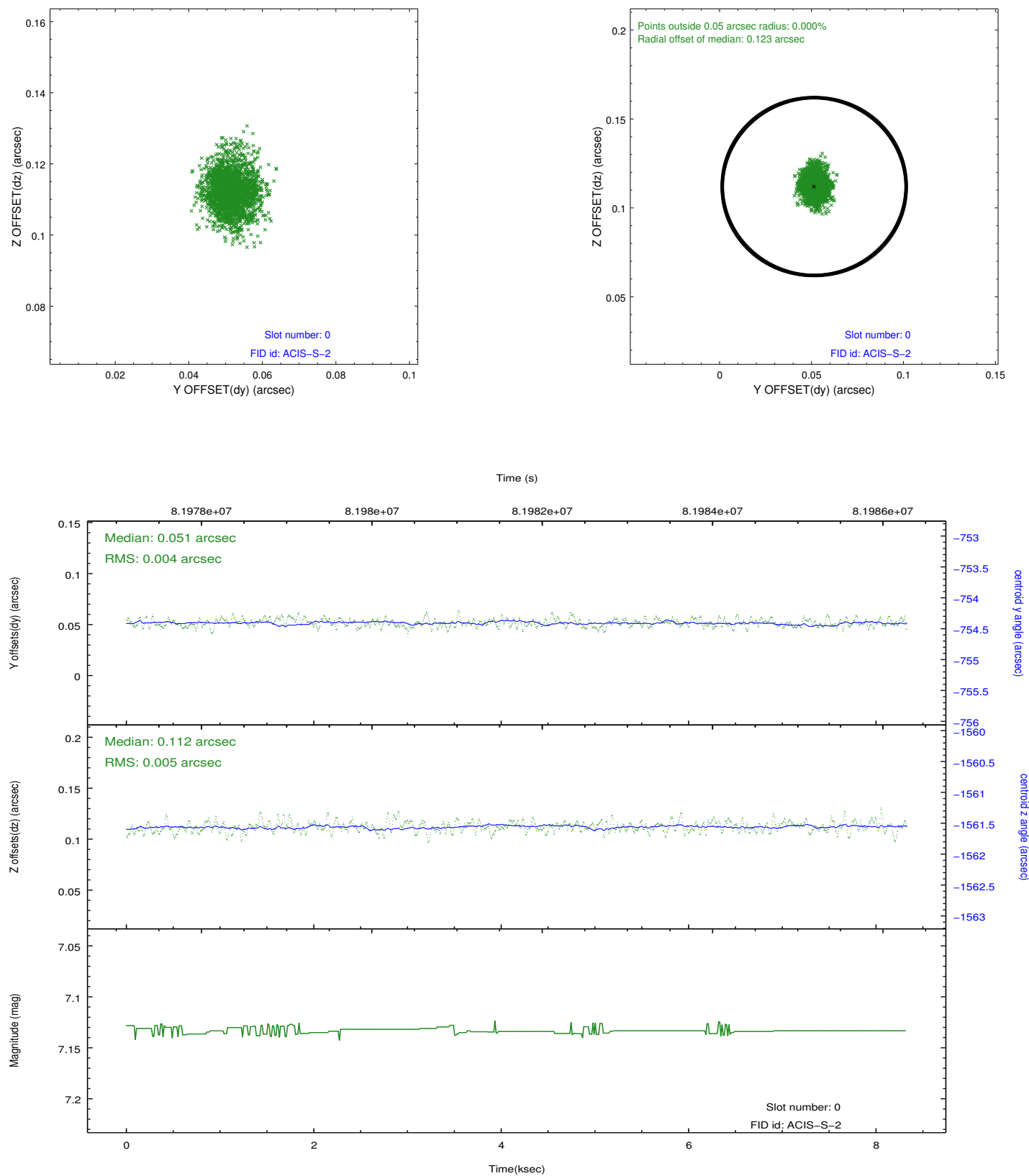


2.4.5 Slot 7

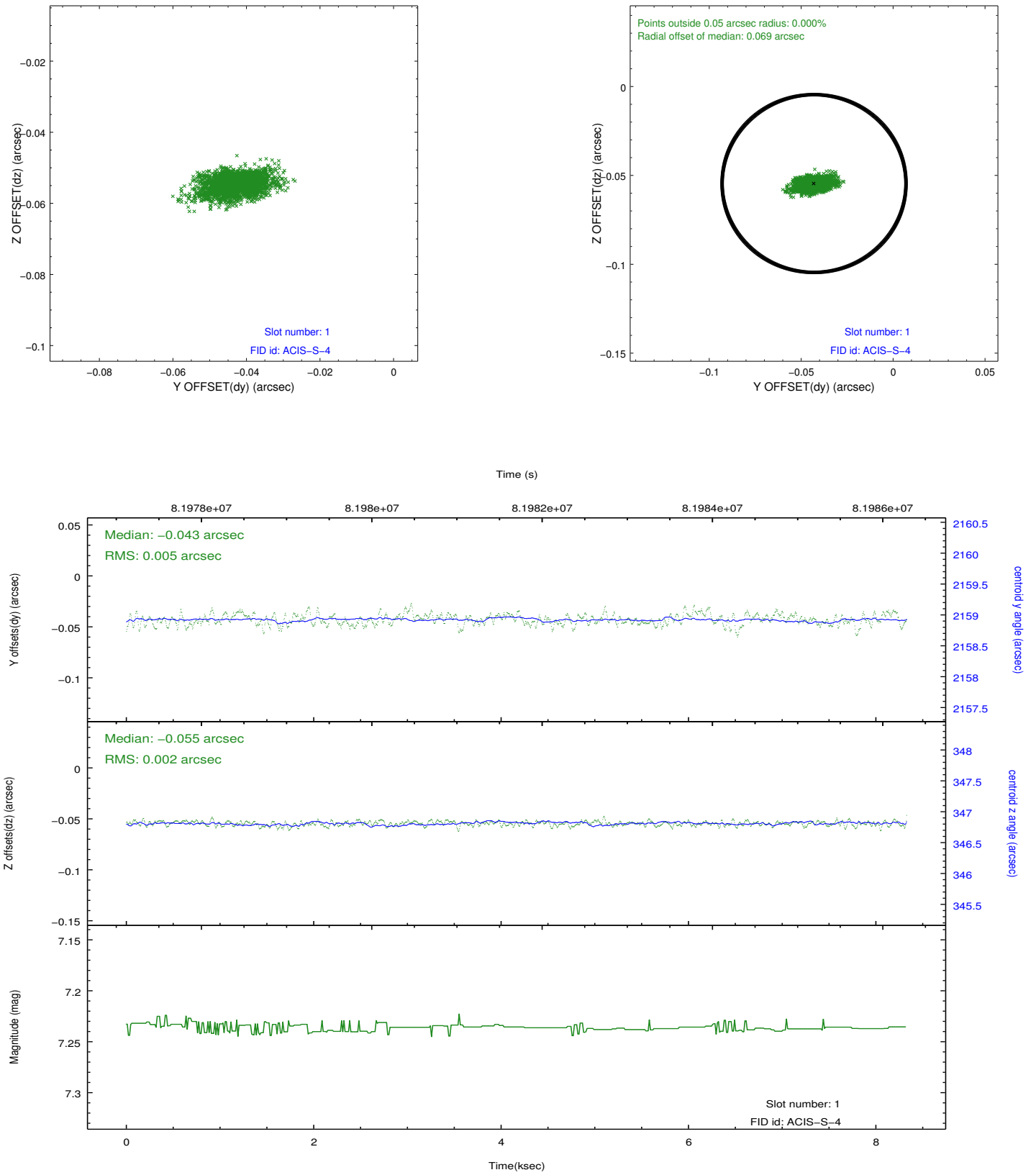


2.5 FID Slots

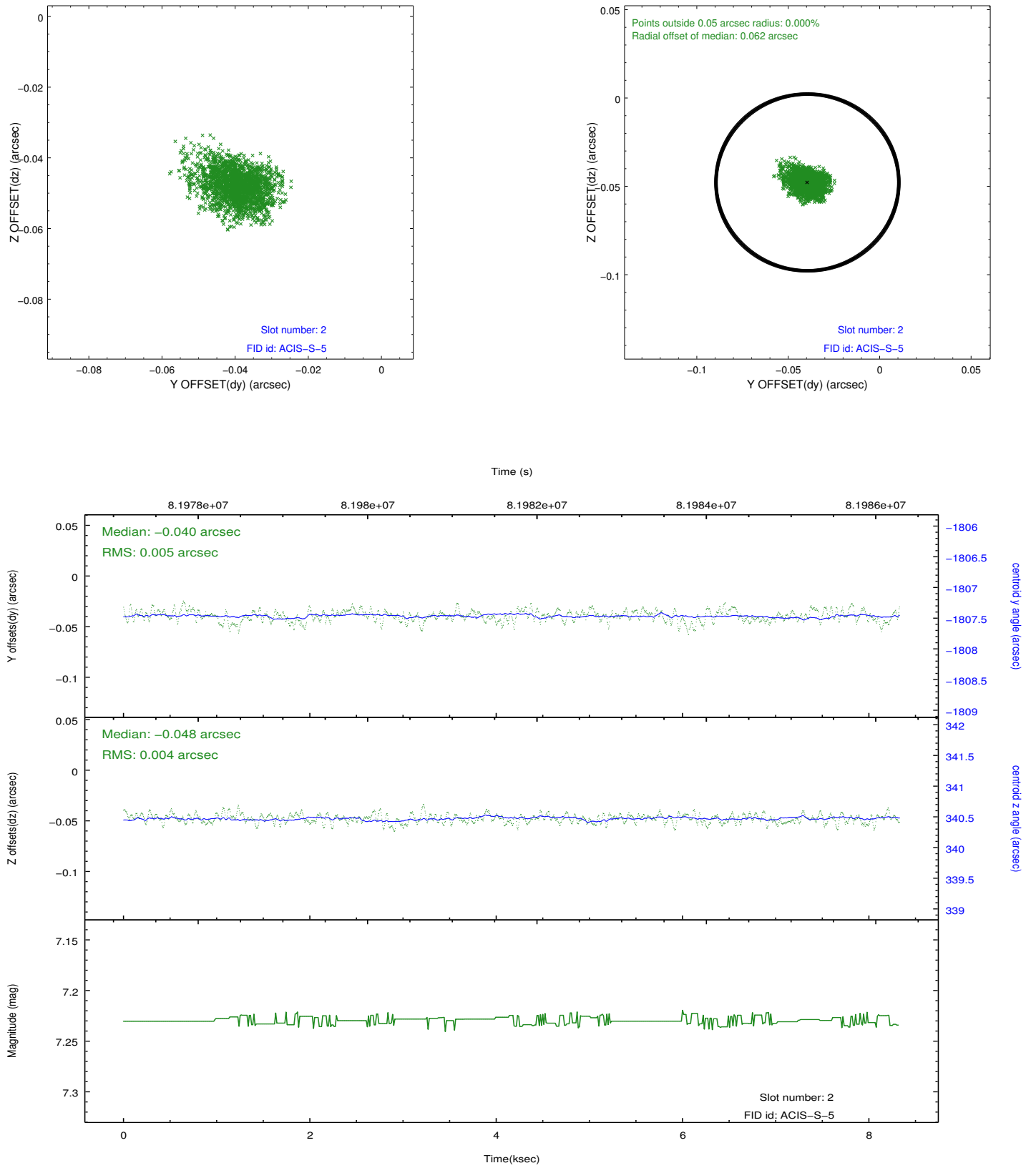
2.5.1 Slot 0



2.5.2 Slot 1



2.5.3 Slot 2



A Summary

A.1 Status

V&V Scientist	Jen Lauer
V&V Date (YYYY-MM-DD)	2012.09.06
V&V Edition	1
V&V Disposition and Status	OK
V&V Charge Time	6.956

A.2 Comments