

# V&V Reference Report

## L2 ASCDS Version : 8.4.5

Observation 619 - L2 Version 4  
Chandra X-Ray Center

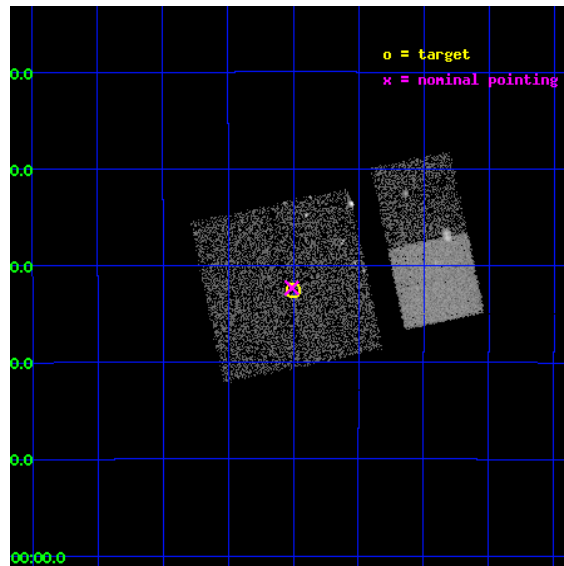
L2 Processing Date : Aug 25 2012

## Contents

<b>1</b>	<b>Front</b>	<b>2</b>
<b>2</b>	<b>OBI</b>	<b>3</b>
2.1	OBI . . . . .	3
2.1.1	Images . . . . .	3
2.1.2	Bias . . . . .	3
2.1.3	Parameters . . . . .	4
2.1.4	Events . . . . .	4
2.2	Compared Parameters . . . . .	5
2.3	Aspect . . . . .	6
2.4	Star Slots . . . . .	9
2.4.1	Slot 3 . . . . .	9
2.4.2	Slot 4 . . . . .	10
2.4.3	Slot 5 . . . . .	11
2.4.4	Slot 6 . . . . .	12
2.4.5	Slot 7 . . . . .	13
2.5	FID Slots . . . . .	14
2.5.1	Slot 0 . . . . .	14
2.5.2	Slot 1 . . . . .	15
2.5.3	Slot 2 . . . . .	16
<b>A</b>	<b>Summary</b>	<b>17</b>
A.1	Status . . . . .	17
A.2	Comments . . . . .	17

# 1 Front

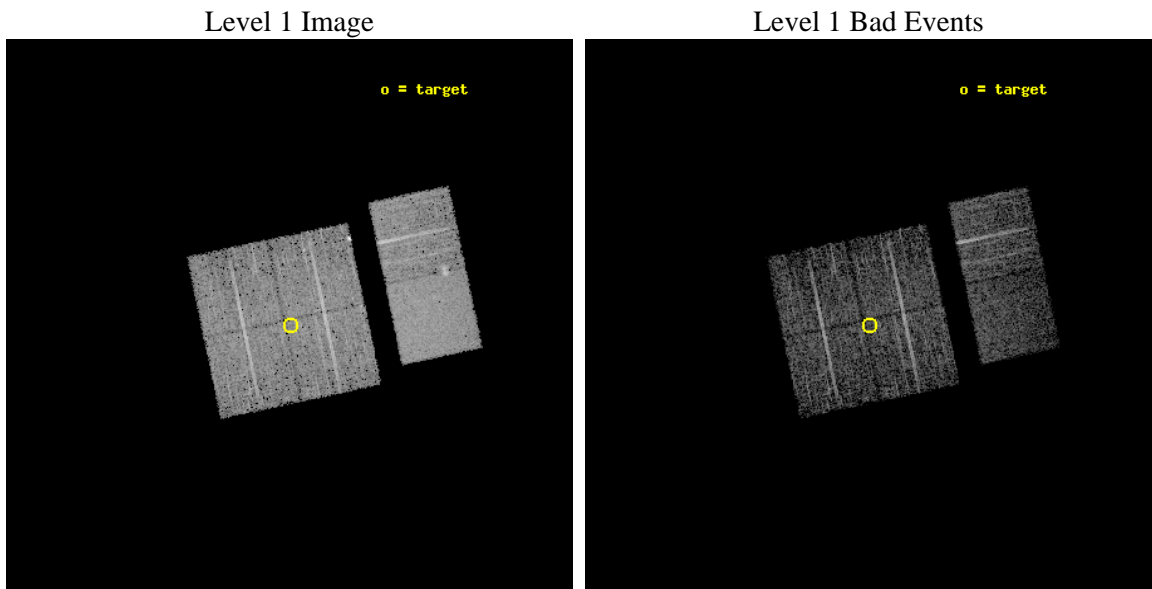
seq_num	200044	Sequence number
obs_id	619	Observation id
title	X-RAYS FROM THE RHO OPHIUCHI YOUNG STAR CLUSTER	Proposal title
observer	Dr. Thierry Montmerle	Principal investigator
object	OPHIUCHI MOSAIC #2	Source name
dtcycle	0	&#160
cycle	P	events from which exps? Prim/Second/Both
ra_targ	246.62458	Observer's specified target RA [deg]
dec_targ	-24.5425	Observer's specified target Dec [deg]
ra_nom	246.62771341077	Nominal RA [deg]
dec_nom	-24.538498430188	Nominal Dec [deg]
roll_nom	78.0935131884	Nominal Roll [deg]
revision	4	Processing version of data
ontime	4172.487137571	Sum of GTIs [s]
livetime	4119.6525930649	Livetime [s]
ontime0	4172.364017576	Sum of GTIs [s]
ontime1	4172.4050575793	Sum of GTIs [s]
ontime2	4172.4460975826	Sum of GTIs [s]
ontime3	4172.487137571	Sum of GTIs [s]
ontime6	4172.5692175776	Sum of GTIs [s]
ontime7	4172.5281775743	Sum of GTIs [s]
l2events	35358	Number of level 2 events



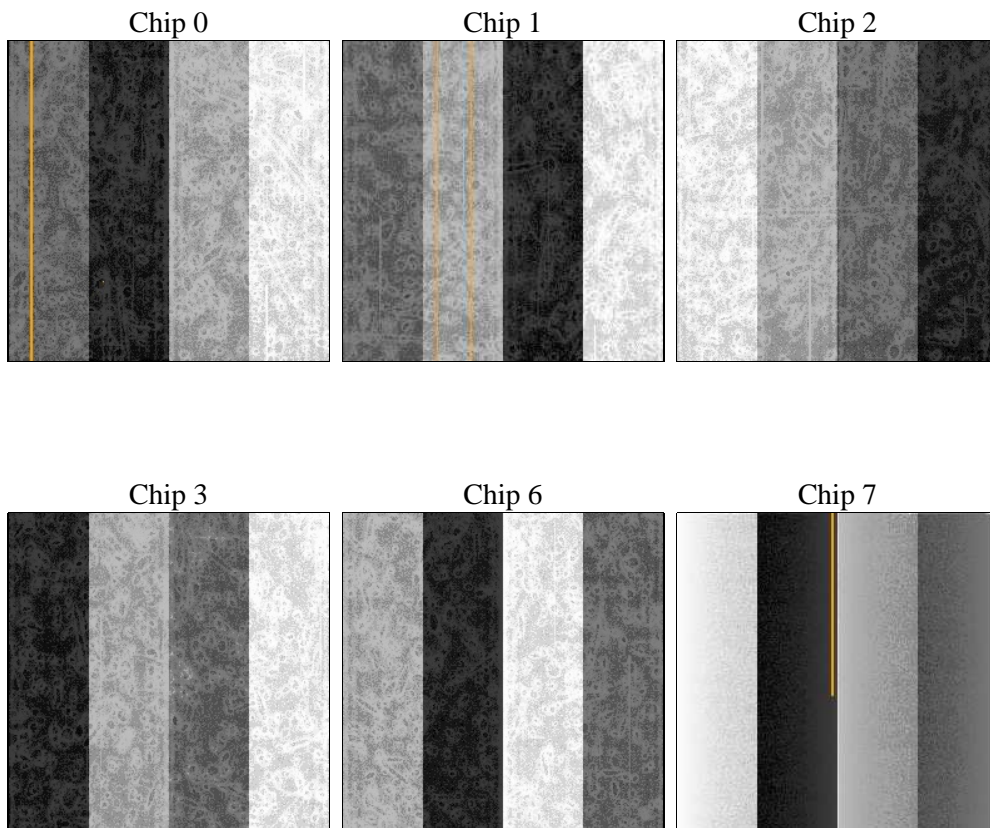
## 2 OBI

### 2.1 OBI

#### 2.1.1 Images



#### 2.1.2 Bias



### 2.1.3 Parameters

obi_num	0	Obi number	sched_exp_time	5100.000000	[s] Scheduled observation exposure time
ascdsver	8.4.5	Processing system revision	ontime	4172.487137571	Sum of GTIs [s]
caldsver	4.5.1.1	&#160	ontime0	4172.364017576	Sum of GTIs [s]
date	2012-08-25T15:40:26	Date and time of file creation	ontime1	4172.4050575793	Sum of GTIs [s]
revision	4	Processing version of data	ontime2	4172.4460975826	Sum of GTIs [s]
			ontime3	4172.487137571	Sum of GTIs [s]
			ontime6	4172.5692175776	Sum of GTIs [s]
			ontime7	4172.5281775743	Sum of GTIs [s]
			l1events	194189	Number of level 1 events

### 2.1.4 Events

	ccd 0	ccd 1	ccd 2	ccd 3	ccd 6	ccd 7		ccd 0	ccd 1	ccd 2	ccd 3	ccd 6	ccd 7
level 1 events	28495	28695	31730	30894	33490	40885	grade 0 events	1397	1289	2553	1417	1743	2626
rejected events	25313	25408	27040	27773	29743	20306		4%	4%	8%	4%	5%	6%
rejected %	88%	88%	85%	89%	88%	49%	grade 1 events	13	8	24	13	19	27
								0%	0%	0%	0%	0%	0%
							grade 2 events	632	674	845	592	675	4193
								2%	2%	2%	1%	2%	10%
							grade 3 events	314	379	384	290	368	1984
								1%	1%	1%	0%	1%	4%
							grade 4 events	320	374	367	299	321	1970
								1%	1%	1%	0%	0%	4%
							grade 5 events	909	962	937	980	1164	3340
								3%	3%	2%	3%	3%	8%
							grade 6 events	524	577	549	528	643	9841
								1%	2%	1%	1%	1%	24%
							grade 7 events	24386	24432	26071	26775	28557	16904
								85%	85%	82%	86%	85%	41%

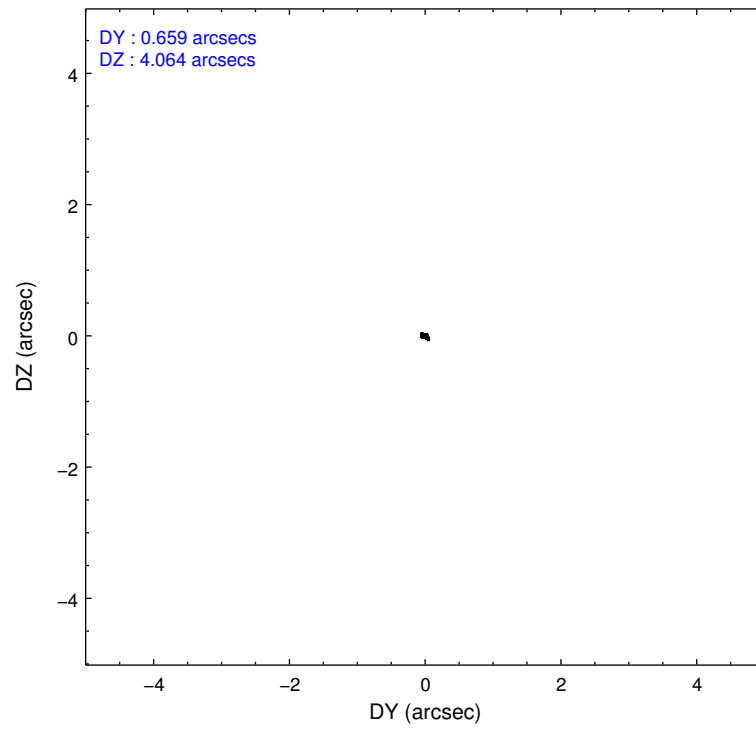
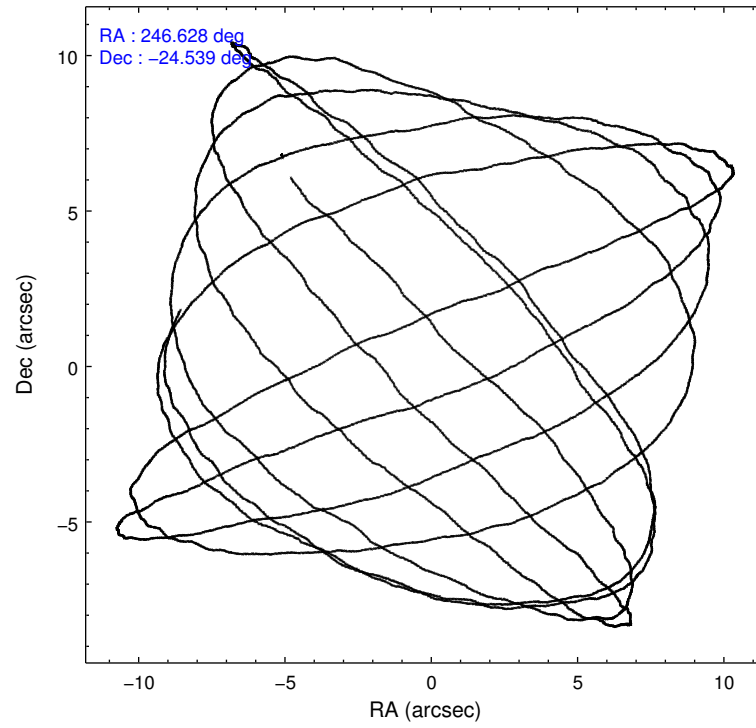


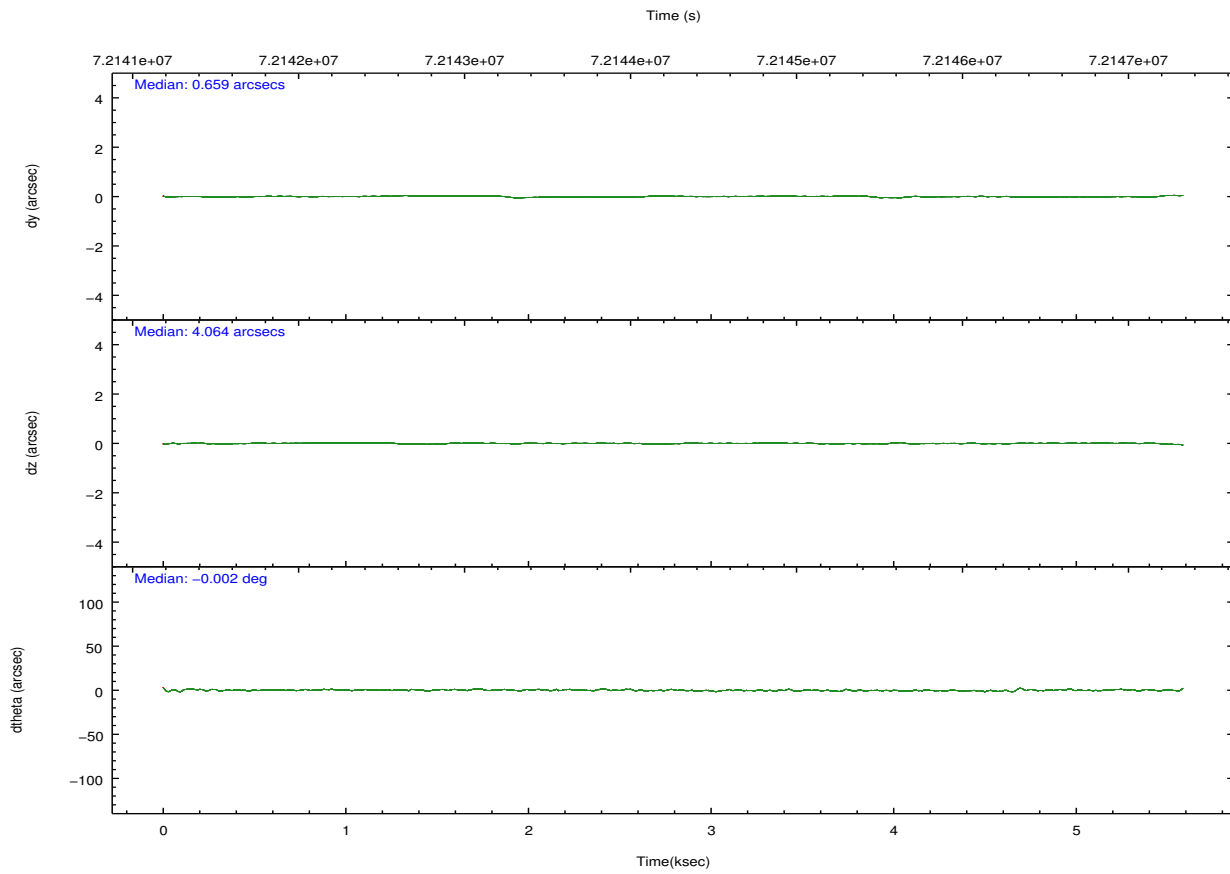
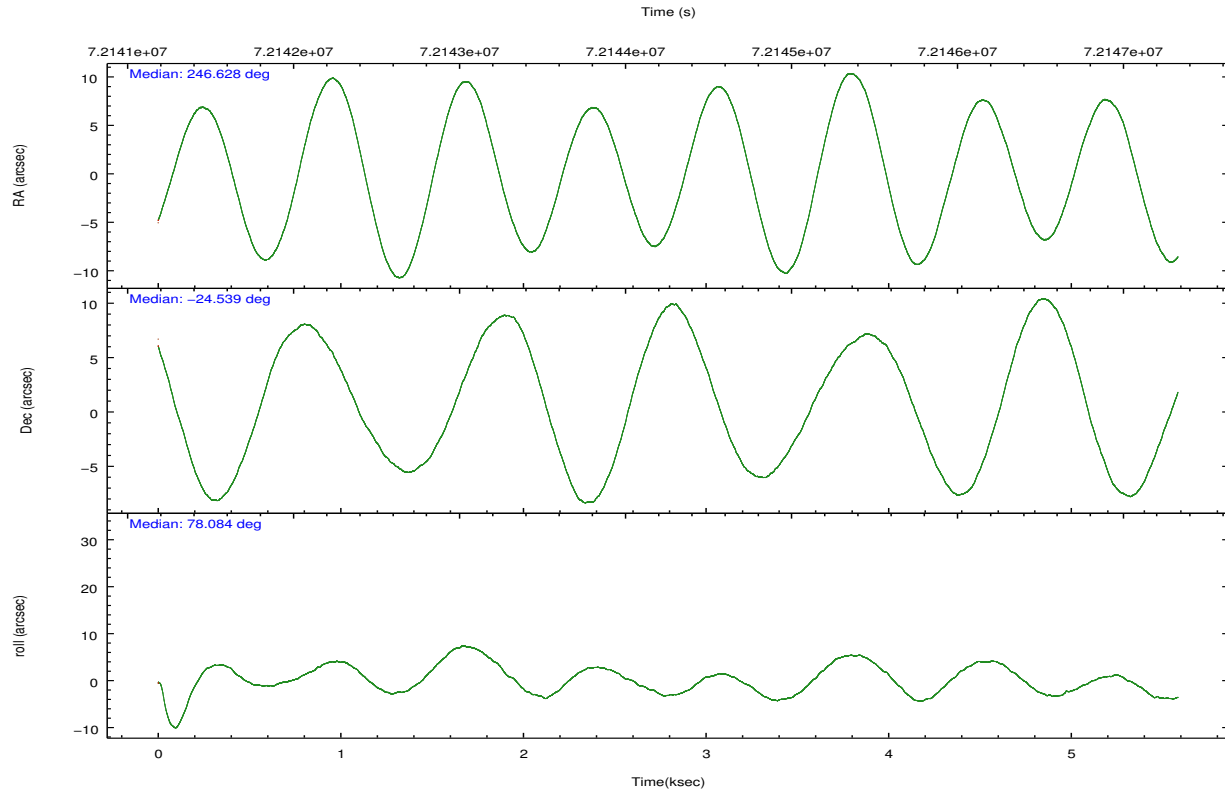
## 2.2 Compared Parameters

Parameter	Planned	Actual
Instrument	ACIS	ACIS
Detector	ACIS-012367	ACIS-012367
Grating	NONE	NONE
Data mode	FAINT	FAINT
Observation mode	POINTING	POINTING
[deg] Pointing RA	246.636960	246.6277134107731
[deg] Pointing Dec	-24.564686	-24.53849843018841
[deg] Pointing Roll	77.888639	78.09351318839951
[s] Window start time (MET)	63072064.184000	63072064.184000
[s] Window stop time (MET)	84153664.184000	84153664.184000
[mm] SIM focus pos	-0.782348	-0.7809083437167272
[mm] SIM defocus	0	0.001439871863259334
[mm] SIM translation stage pos	-233.592463	-233.5874344608287
[mm] SIM translation stage offset	0	-0.005018542100998502
[s] Observation start time (MET)	72141948.184000	72141281.832533
Observation start date	2000-04-14T23:24:44	2000-04-14T23:14:41
[s] Observation end time (MET)	72147048.184000	72147751.12027
Observation end date	2000-04-15T00:49:44	2000-04-15T01:02:31
Read mode	TIMED	TIMED

Parameter	Planned	Actual
Obspar format version number	7	7
Obspar file type	PREDICTED	ACTUAL
Obspar update status	NONE	UPDATED
Number of optional ACIS chips dropped	0	0
On-chip summing requested	N	N
Subarray requested	NONE	NONE
Alternating exposures requested	N	N
[s] Primary exposure time	0.000000	3.2

## 2.3 Aspect



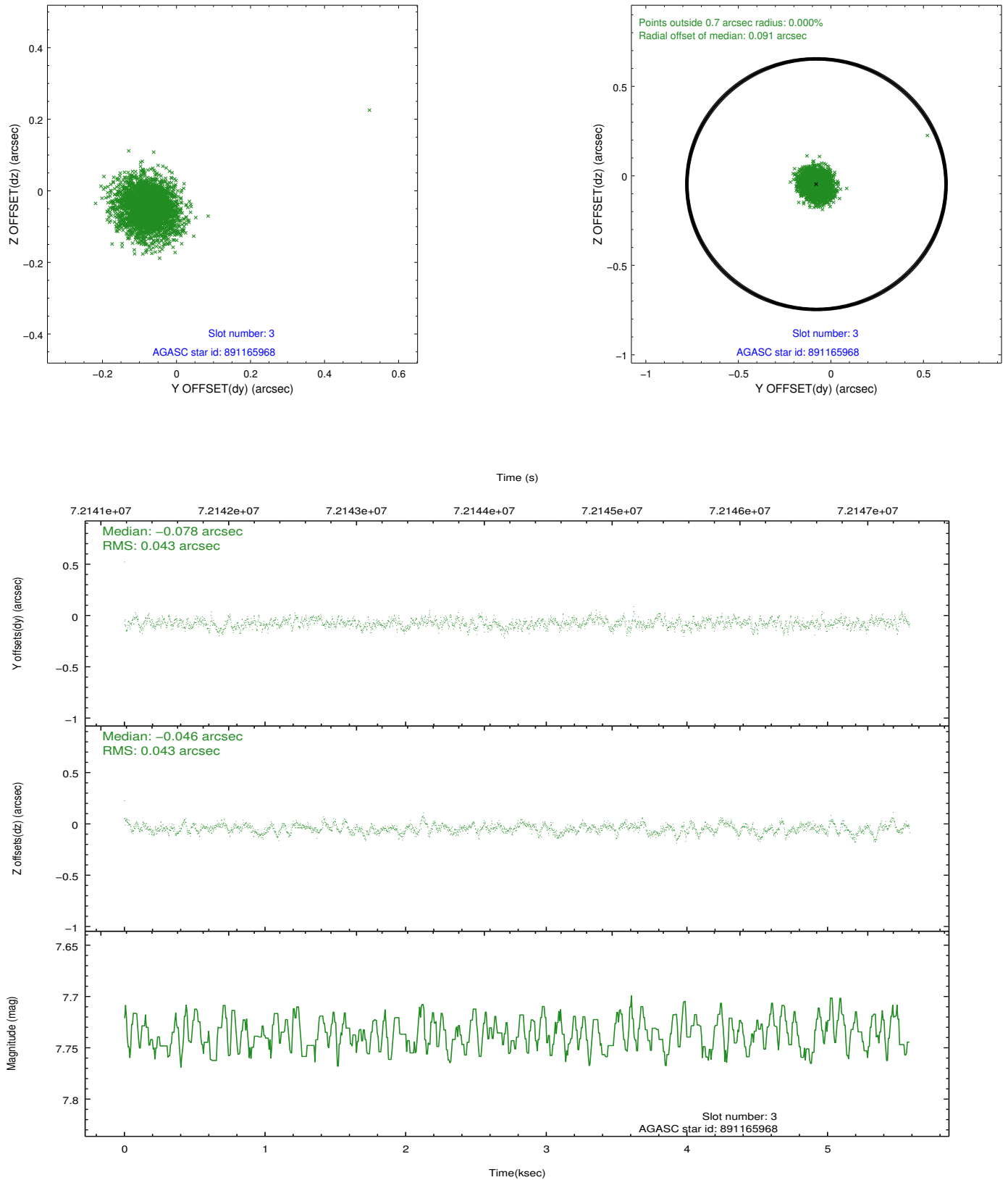


### Slot Statistics

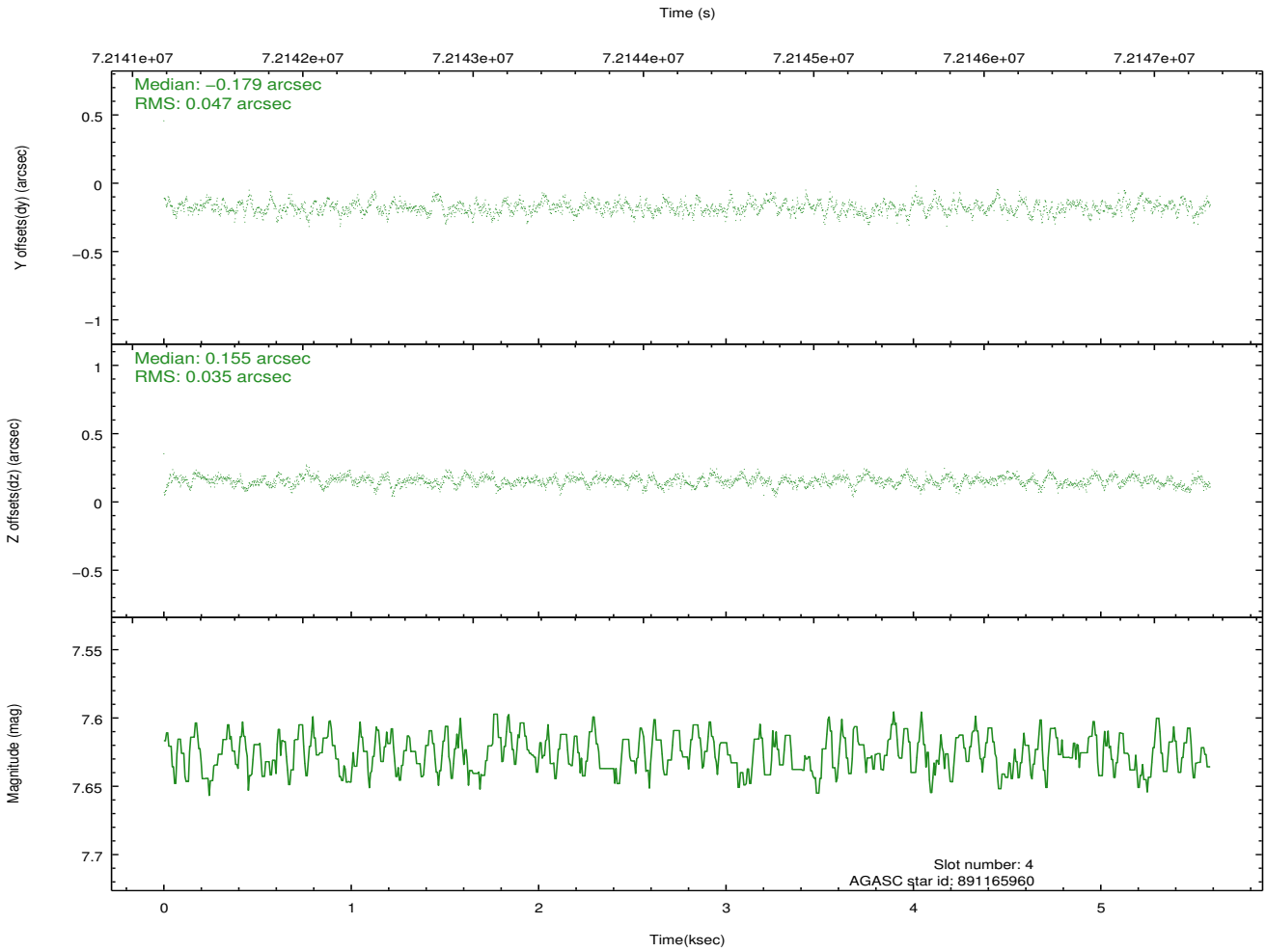
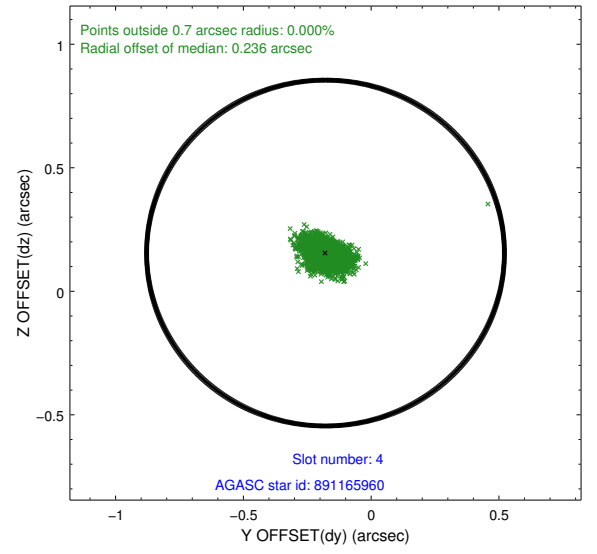
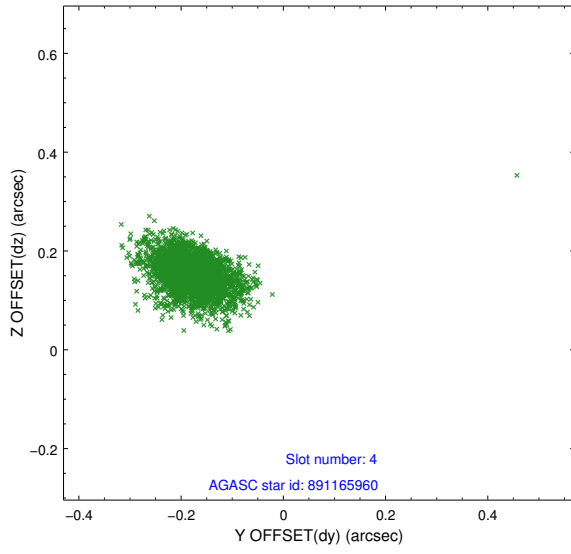
slot	status	id	mag	n_pts	med_dy	med_dz	dr1	dr2	ra	dec	mean_y	mean_z
0	FID	ACIS-I-2	7.14	1363	-0.036	-0.025	0.008	0.015	0.000000	0.000000	-755.01	-833.77
1	FID	ACIS-I-4	7.20	1363	-0.011	0.036	0.006	0.010	0.000000	0.000000	2158.59	1071.93
2	FID	ACIS-I-5	7.23	1363	-0.054	0.059	0.008	0.014	0.000000	0.000000	-1807.47	1071.03
3	GUIDE	891165968	7.74	2725	-0.078	-0.046	0.064	0.104	247.104842	-24.750274	-334.64	-1636.24
4	GUIDE	891165960	7.63	2725	-0.179	0.155	0.059	0.104	247.245842	-24.537990	508.05	-1930.55
5	GUIDE	891028360	8.28	2725	-0.025	-0.196	0.066	0.112	246.088822	-25.025389	-2000.35	1398.52
6	GUIDE	891028200	9.66	2722	0.029	0.033	0.090	0.152	246.880837	-25.150608	-1896.82	-1219.36
7	GUIDE	891028104	9.35	2723	0.250	0.056	0.072	0.120	246.615701	-25.040208	-1688.69	-291.88

## 2.4 Star Slots

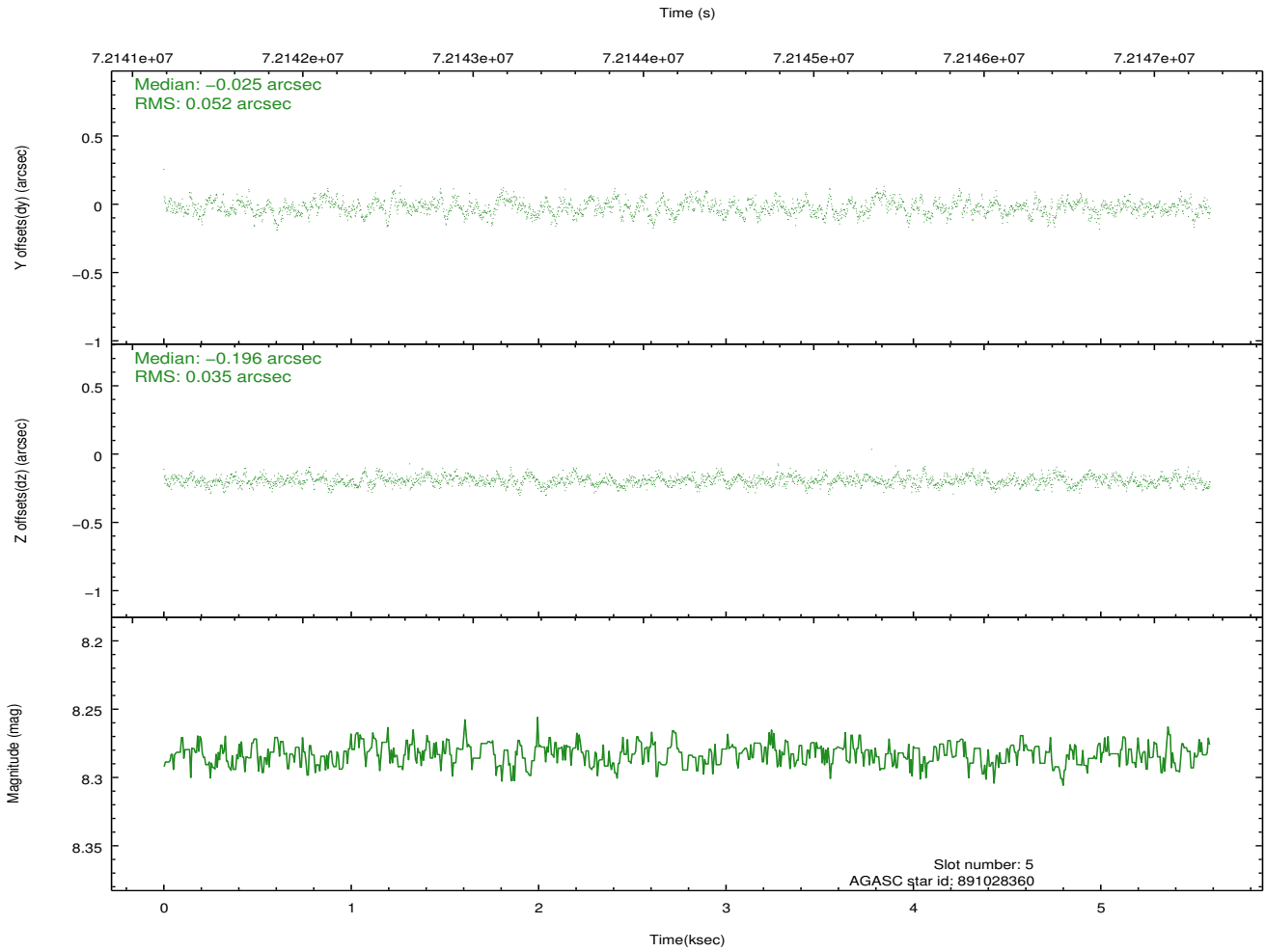
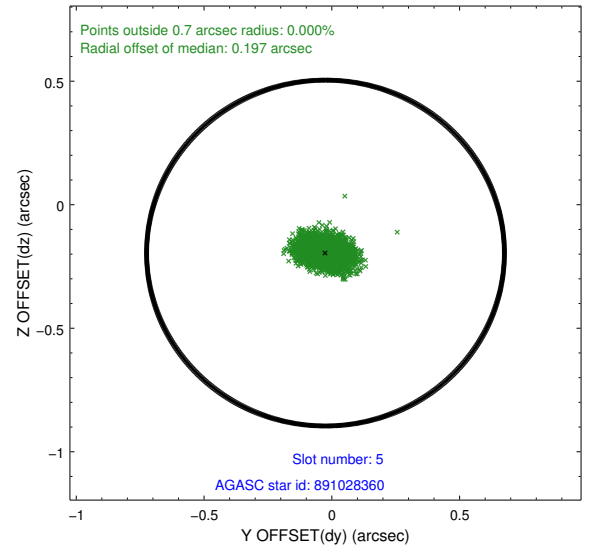
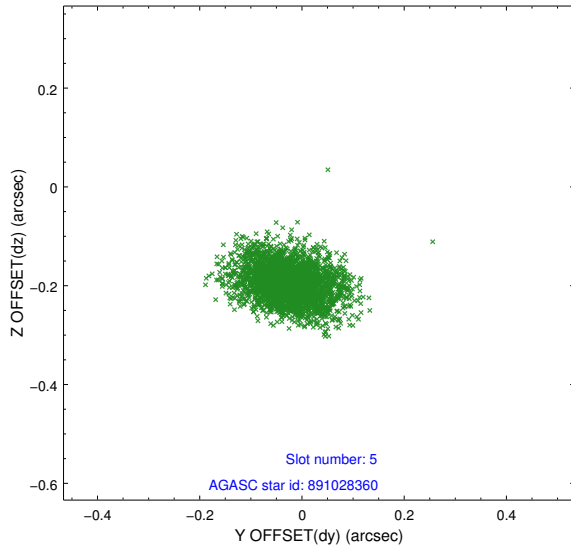
### 2.4.1 Slot 3



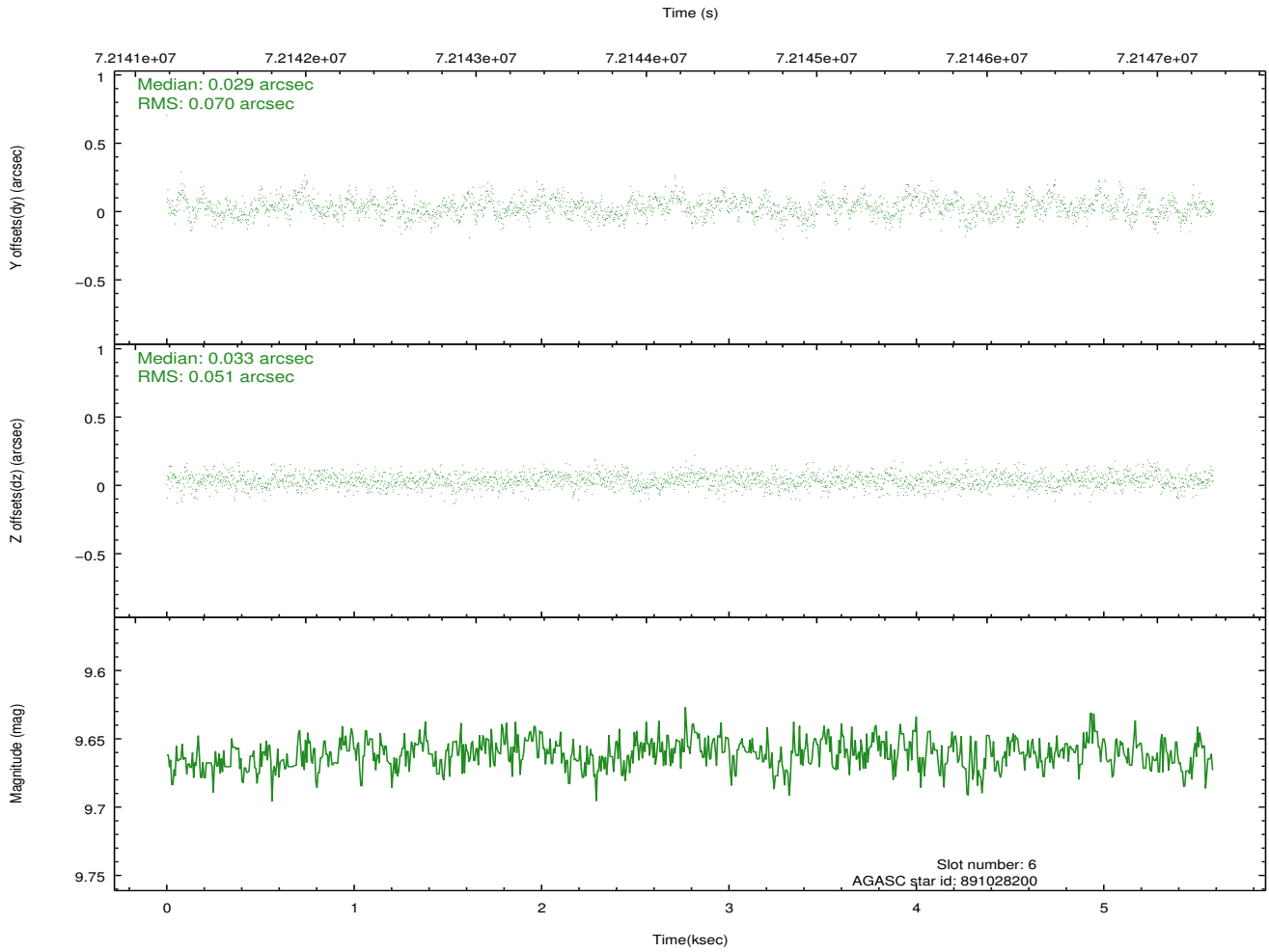
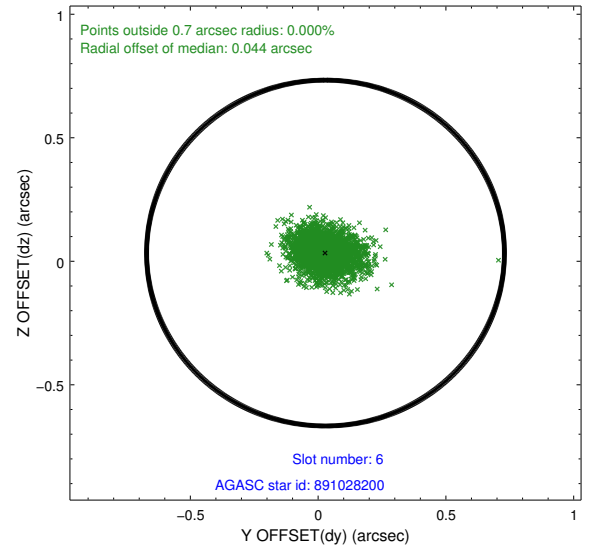
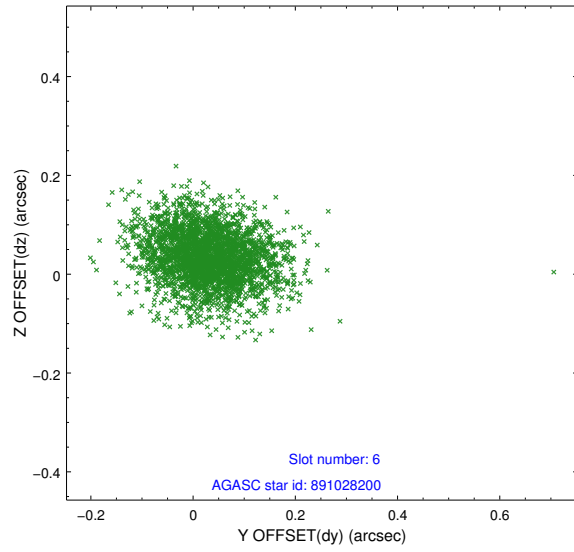
## 2.4.2 Slot 4



### 2.4.3 Slot 5

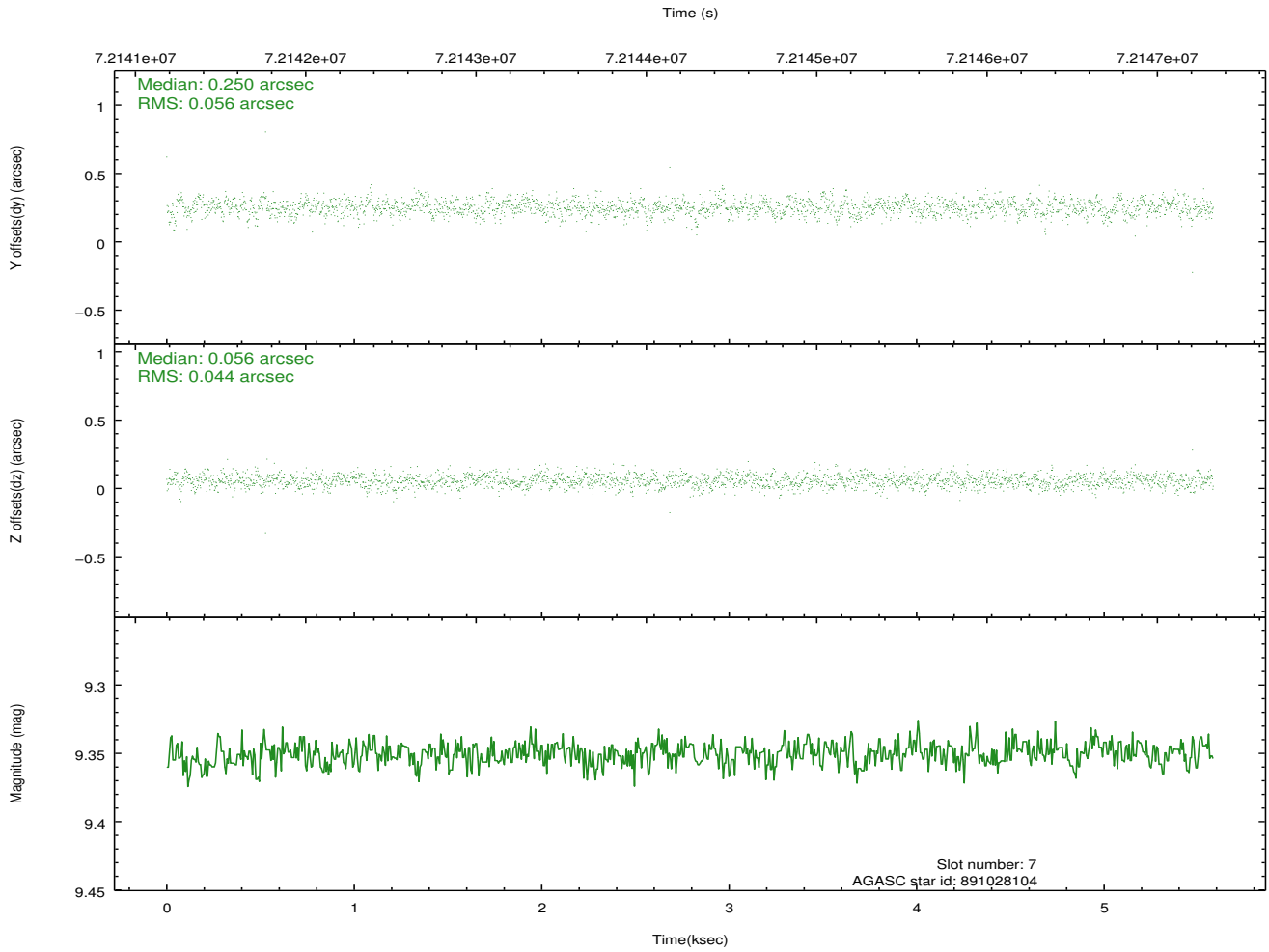
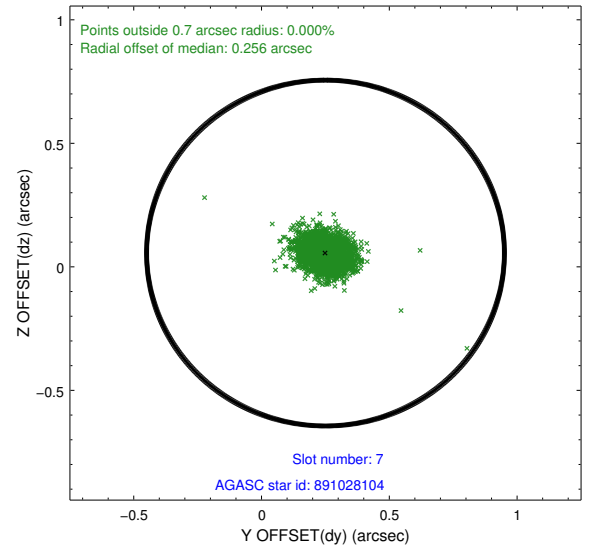
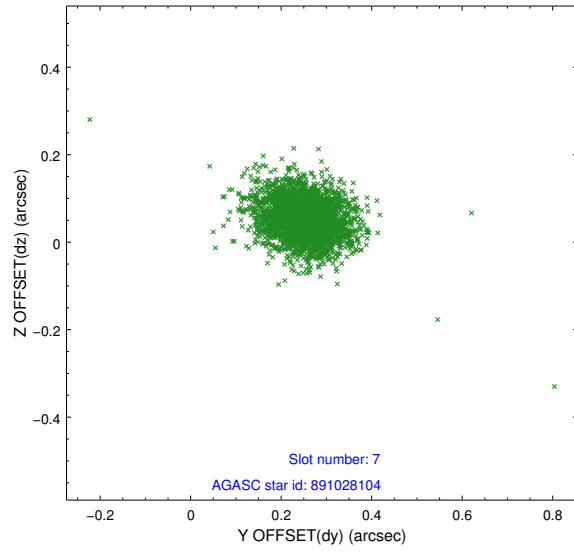


## 2.4.4 Slot 6



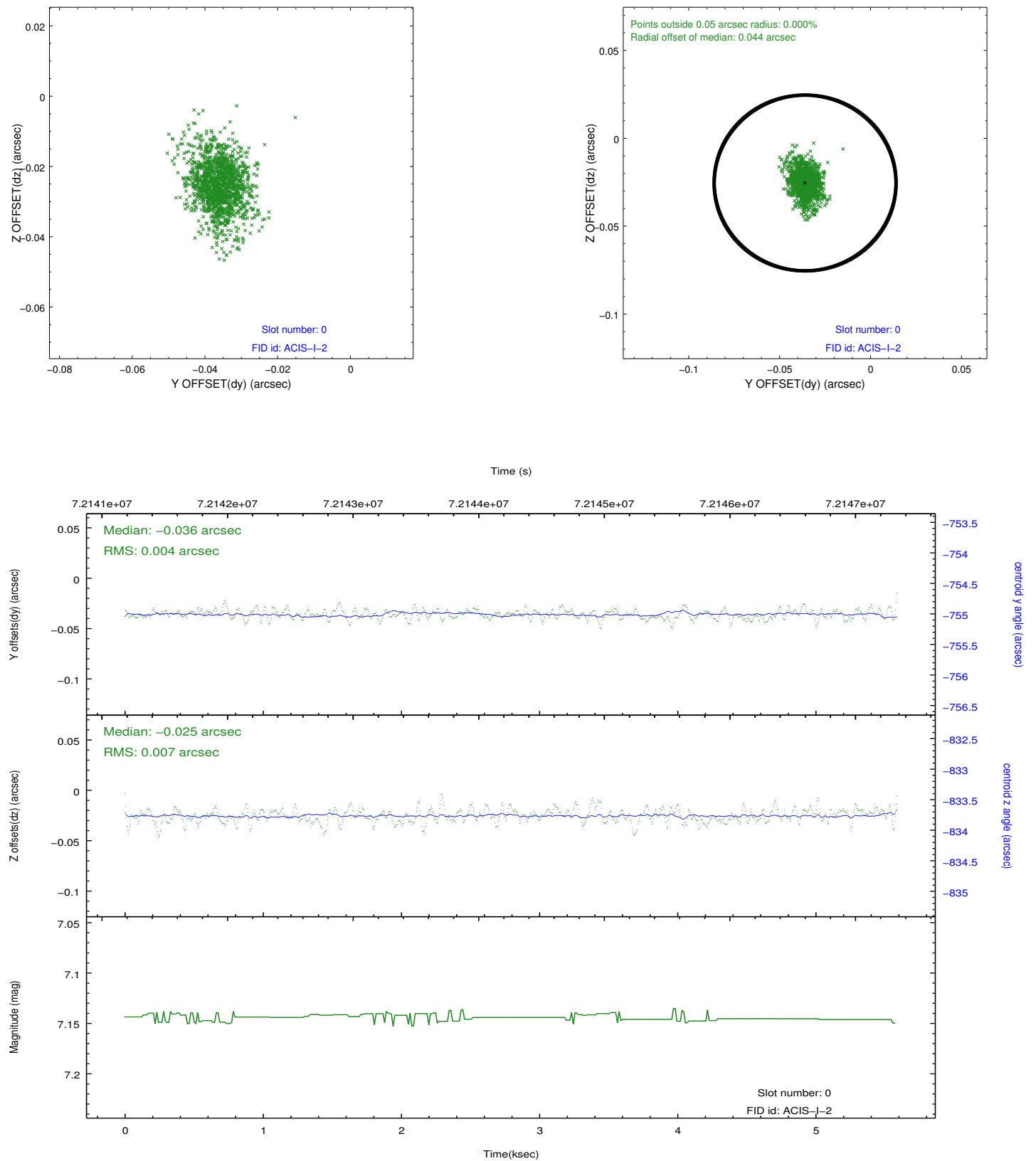


## 2.4.5 Slot 7

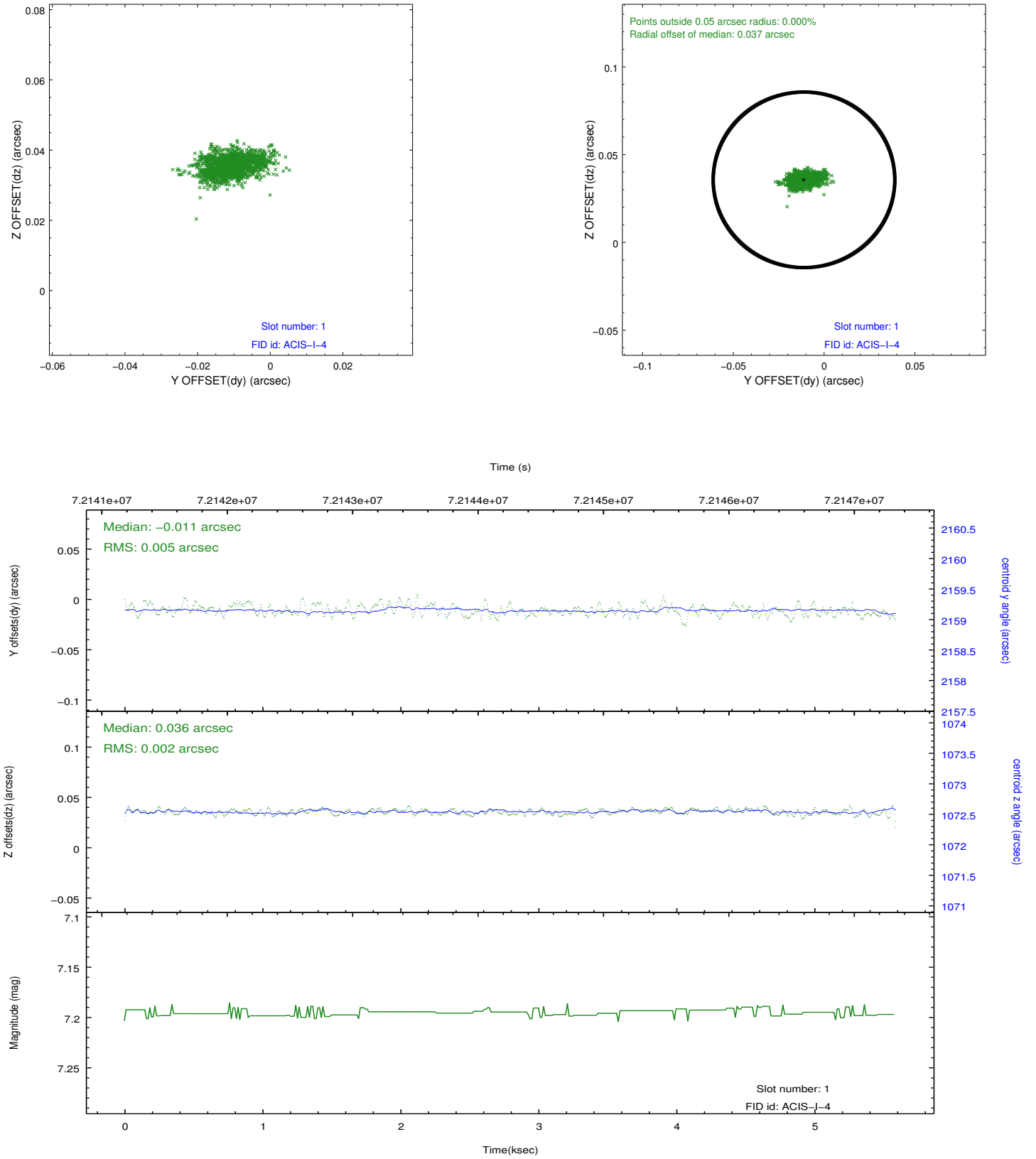


## 2.5 FID Slots

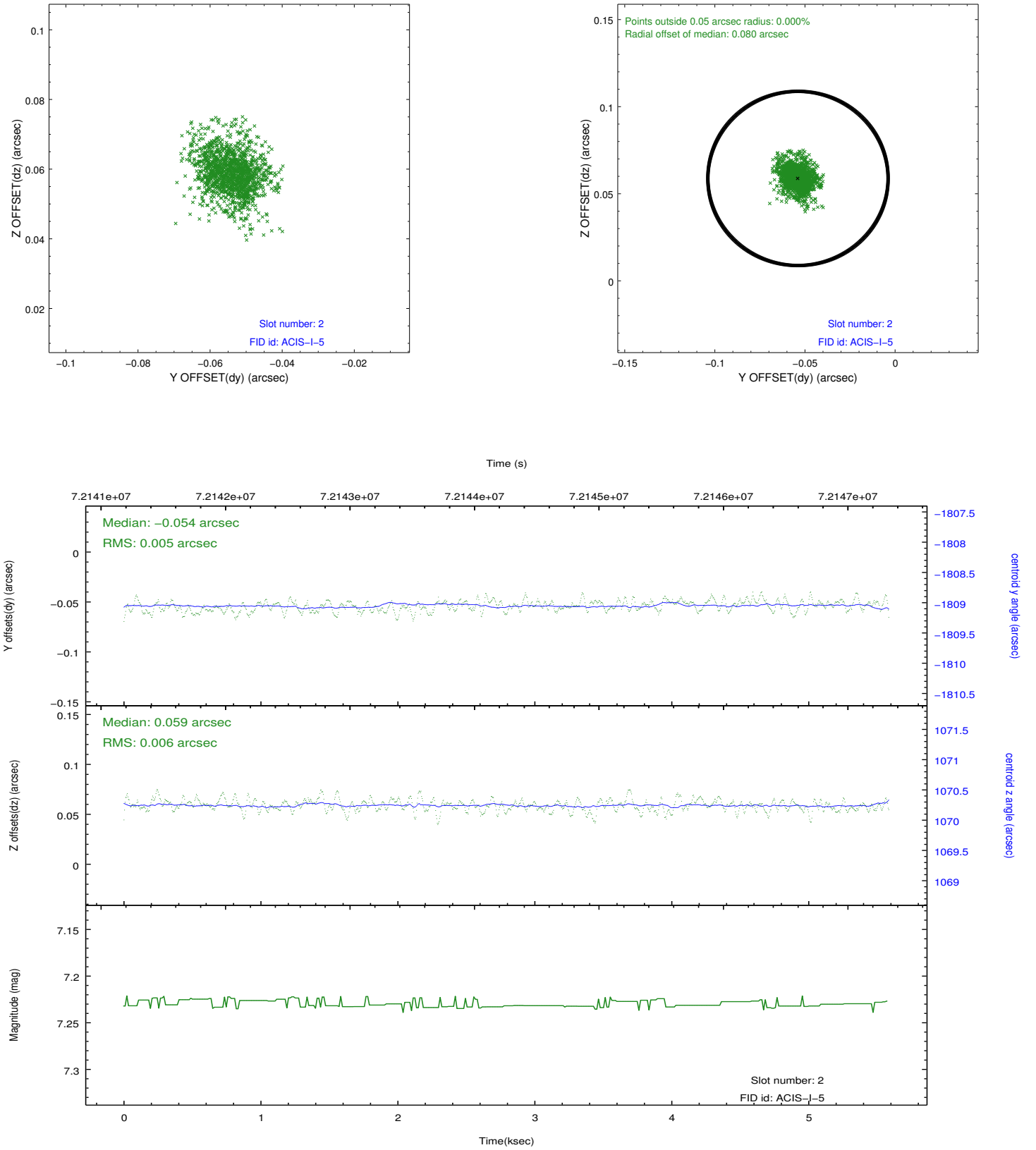
### 2.5.1 Slot 0



## 2.5.2 Slot 1



### 2.5.3 Slot 2



## A Summary

### A.1 Status

V&V Scientist	Jen Lauer
V&V Date (YYYY-MM-DD)	2012.08.28
V&V Edition	1
V&V Disposition and Status	OK
V&V Charge Time	4.172

### A.2 Comments

Window constraint met.