

V&V Reference Report

L2 ASCDS Version : 7.6.10

Observation 6 - L2 Version 001
Chandra X-Ray Center

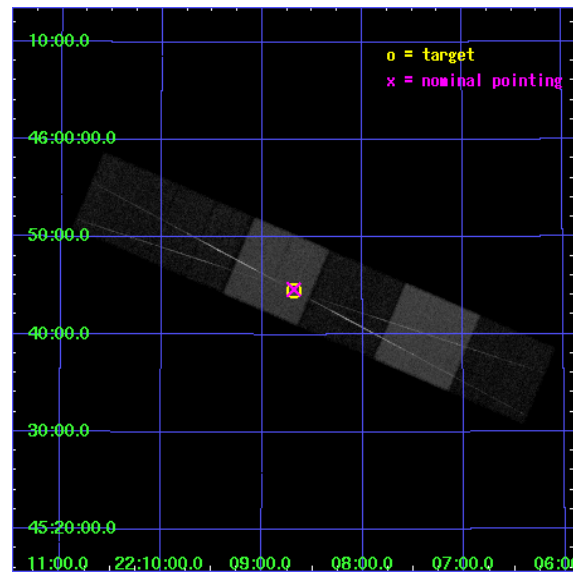
L2 Processing Date : Jun 6 2007

Contents

1	Front	2
2	OBI	3
2.1	OBI	3
2.1.1	Images	3
2.1.2	Bias	3
2.1.3	Parameters	4
2.1.4	Events	4
2.2	Compared Parameters	5
2.3	Aspect	6
2.4	Star Slots	9
2.4.1	Slot 3	9
2.4.2	Slot 4	10
2.4.3	Slot 5	11
2.4.4	Slot 6	12
2.4.5	Slot 7	13
2.5	FID Slots	14
2.5.1	Slot 0	14
2.5.2	Slot 1	15
2.5.3	Slot 2	16
3	Gratings	17
3.1	HEG Arm	17
3.2	MEG Arm	19
A	Summary	21
A.1	Status	21
A.2	Comments	21

1 Front

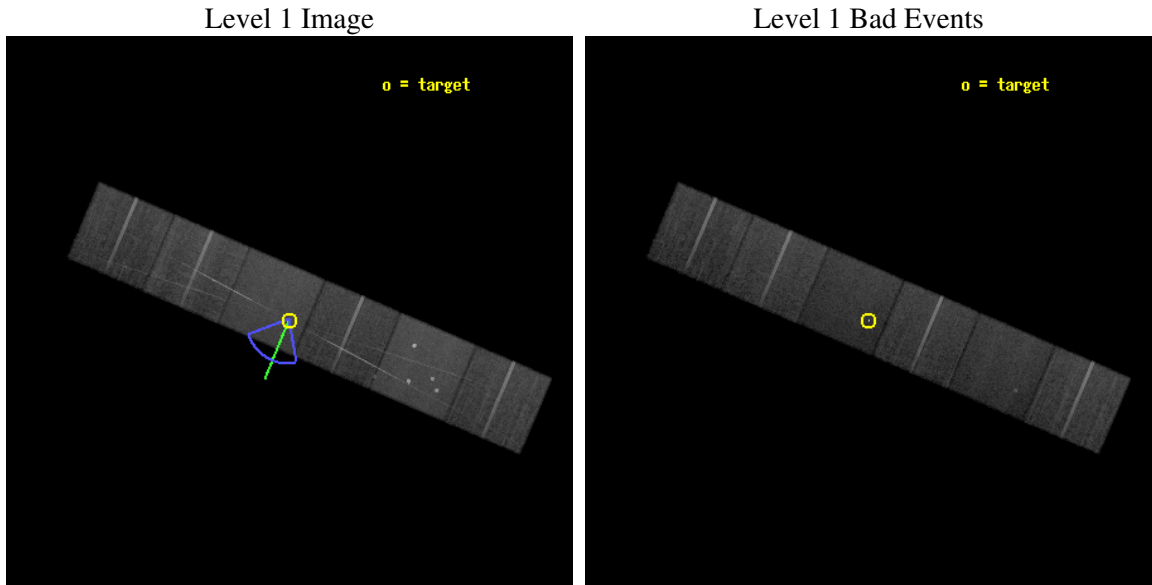
seq_num	200004
obs_id	6
title	STELLAR CORONAL SPECTROSCOPY OF COOL STARS
observer	Prof. Claude Canizares
object	AR LAC-1 ECLIPSE (1)
dtcycle	0
cycle	P
ra_targ	332.17
dec_targ	45.742222
ra_nom	332.17066206241
dec_nom	45.744324011438
roll_nom	203.13799381657
revision	3
ontime	32505.600030273
livetime	32093.994550167
ontime4	32502.359070033
ontime5	32505.600030273
ontime6	32502.359070033
ontime7	32505.600030273
ontime8	32502.359189659
ontime9	32502.359089956
l2events	315590



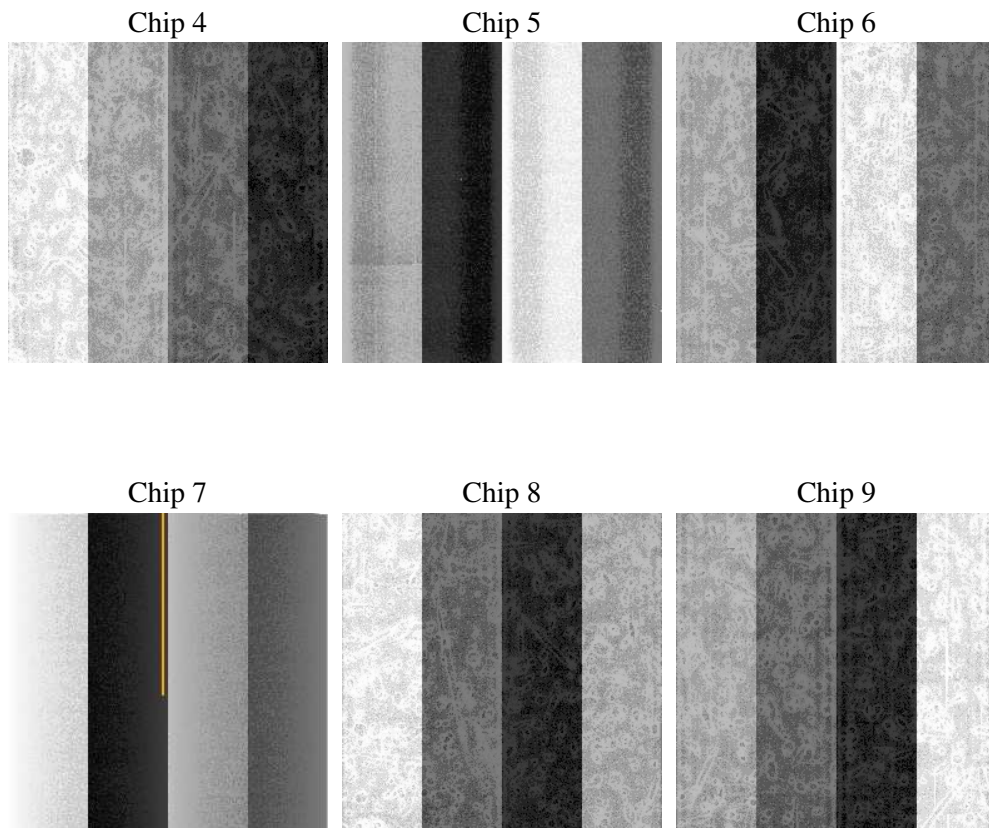
2 OBI

2.1 OBI

2.1.1 Images



2.1.2 Bias



2.1.3 Parameters

obi_num	0
ascdsver	7.6.10
caldsver	3.4.0
date	2007-06-07T01:31:19
revision	3

sched_exp_time	32650.000000
ontime	32505.600030273
ontime4	32502.359070033
ontime5	32505.600030273
ontime6	32502.359070033
ontime7	32505.600030273
ontime8	32502.359189659
ontime9	32502.359089956
l1events	1365326

2.1.4 Events

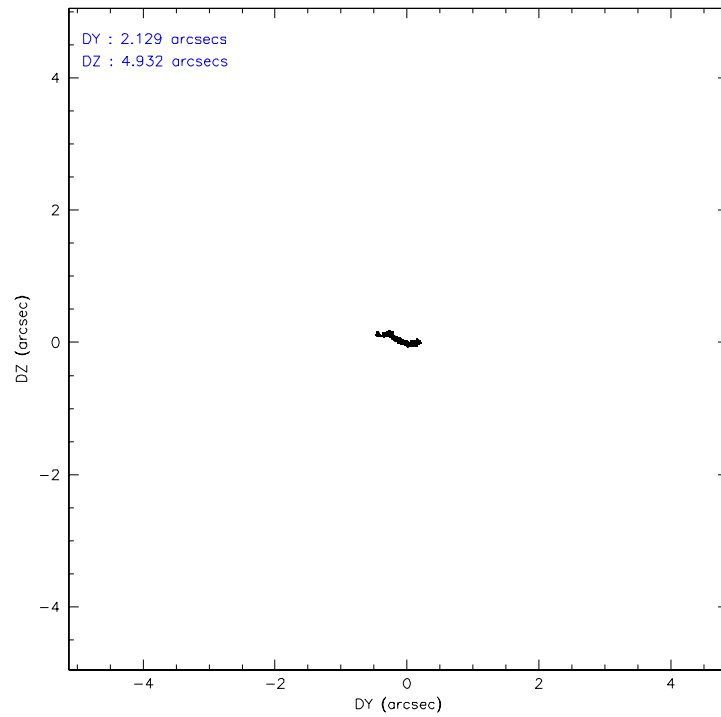
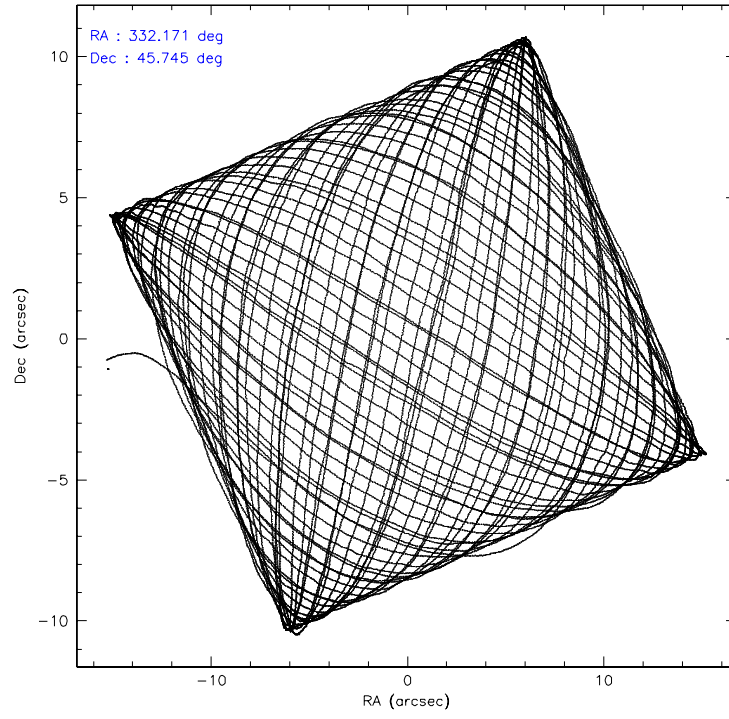
	ccd 4	ccd 5	ccd 6	ccd 7	ccd 8	ccd 9
level 1 events	209733	270679	202400	249325	244838	188351
rejected events	186770	138890	171136	140573	191156	165039
rejected %	89%	51%	84%	56%	78%	87%

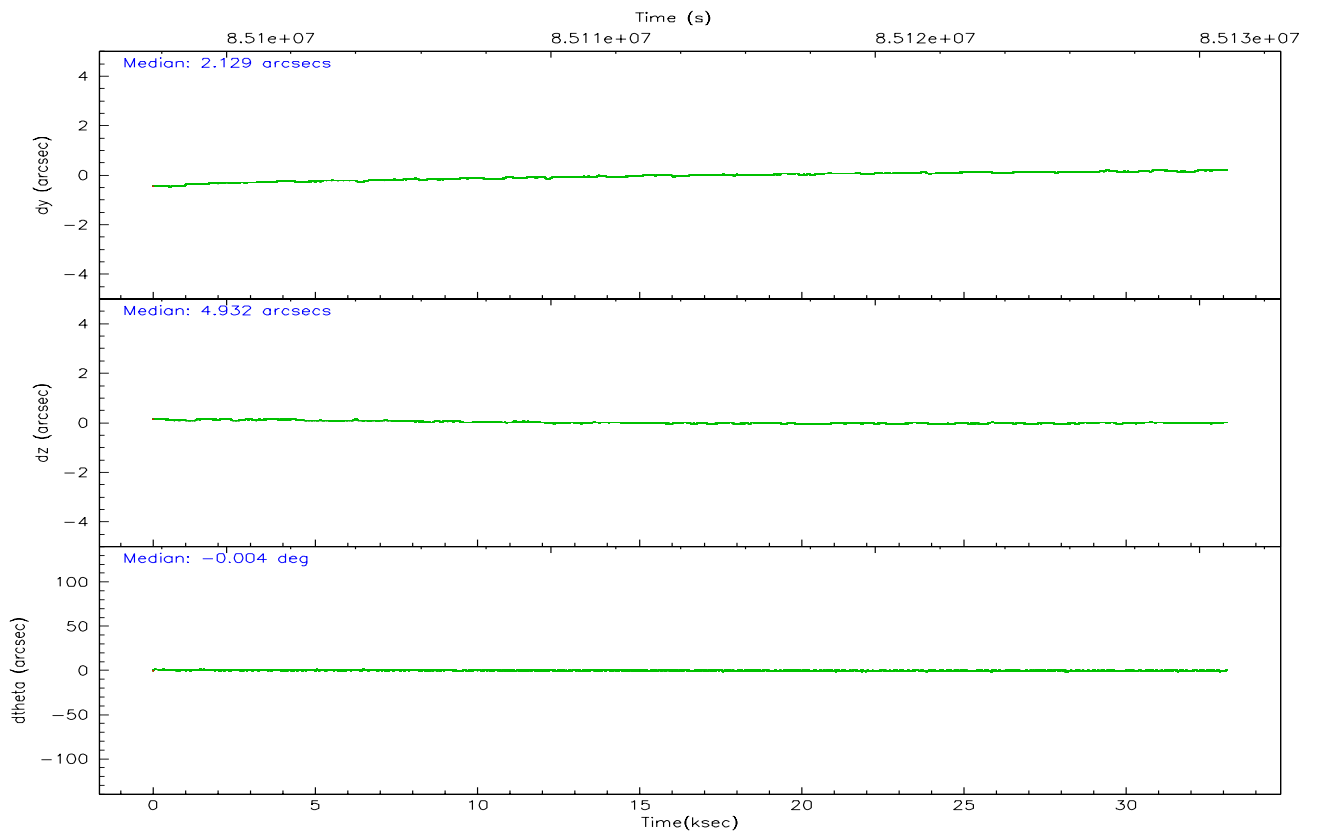
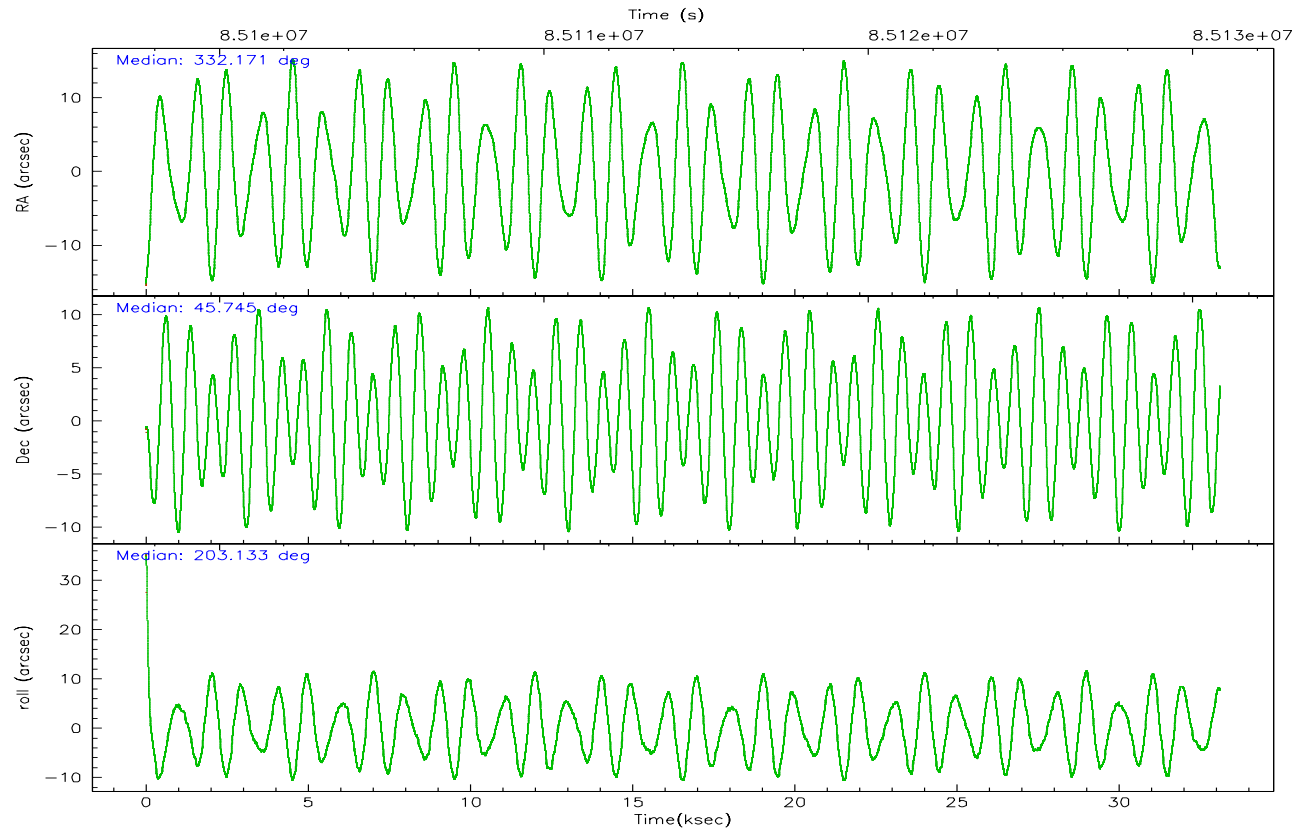
	ccd 4	ccd 5	ccd 6	ccd 7	ccd 8	ccd 9
grade 0 events	10040	23947	17102	11145	21465	10278
	4%	8%	8%	4%	8%	5%
grade 1 events	102	318	113	388	149	83
	0%	0%	0%	0%	0%	0%
grade 2 events	5255	35864	5047	21804	10402	4413
	2%	13%	2%	8%	4%	2%
grade 3 events	2070	5650	2488	10063	5226	2254
	0%	2%	1%	4%	2%	1%
grade 4 events	1924	5375	2372	9925	4764	2124
	0%	1%	1%	3%	1%	1%
grade 5 events	6441	19531	7531	23475	9659	7786
	3%	7%	3%	9%	3%	4%
grade 6 events	3675	60964	4259	55828	11828	4246
	1%	22%	2%	22%	4%	2%
grade 7 events	180226	119030	163488	116697	181345	157167
	85%	43%	80%	46%	74%	83%

2.2 Compared Parameters

Parameter	Planned	Actual	Parameter	Planned	Actual
Instrument	ACIS	ACIS	Obspar format version number	6	6
Detector	ACIS-456789	ACIS-456789	Obspar file type	PREDICTED	ACTUAL
Grating	HETG	HETG	Obspar update status	NONE	UPDATED
Data mode	VFAINT	VFAINT	Number of optional ACIS chips dropped	0	0
Observation mode	POINTING	POINTING	On-chip summing requested	N	N
Pointing RA	332.193996	332.1706620624122	Subarray requested	NONE	NONE
Pointing Dec	45.766339	45.74432401143822	Alternating exposures requested	N	N
Pointing Roll	202.964633	203.1379938165684	Primary exposure time	3.200000	3.2
Roll angle	210.000000	210.000000			
Roll tolerance	40.000000	40.000000			
Roll constraint allows 180D rotation	N	N			
SIM focus pos (mm)	-0.684267	-0.6828225247311905			
SIM defocus (mm)	0	0.001444936568705701			
SIM translation stage pos (mm)	-187.132523	-187.1228876879999			
SIM translation stage offset (mm)	-3	-3.009634895007935			
Phase constraints	Y	Y			
Phase period	1.983180	1.983180			
Phase epoch	48501.123200	48501.123200			
Phase start	0.898000	0.898000			
Phase end	0.102000	0.102000			
Phase start error	0.022000	0.022000			
Phase end error	0.022000	0.022000			
Observation start time	85098210.184000	85097113.69953001			
Observation start date	2000-09-11T22:22:26	2000-09-11T22:05:13			
Observation end	85130860.184000	85131848.388335			

2.3 Aspect



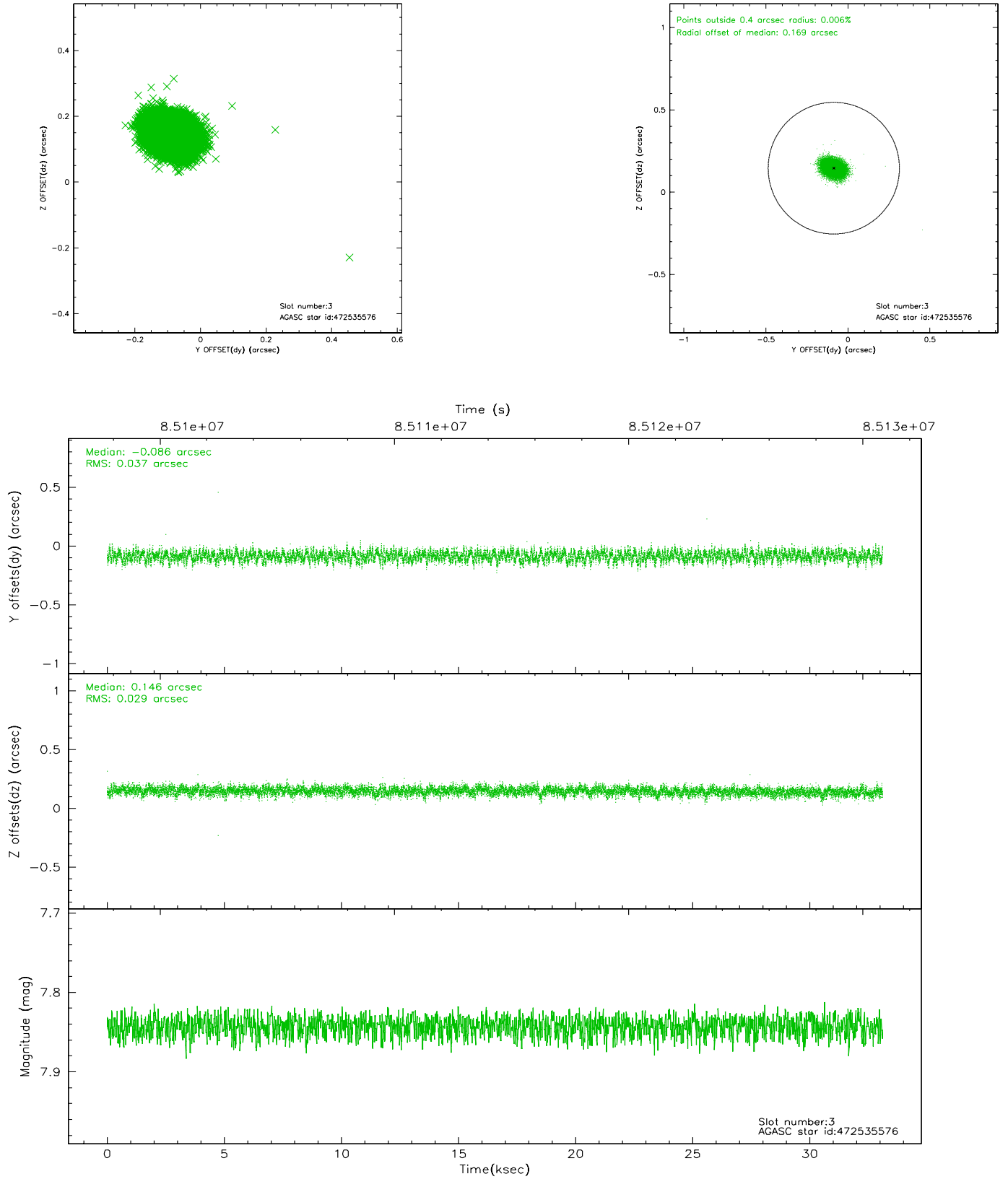


Slot Statistics

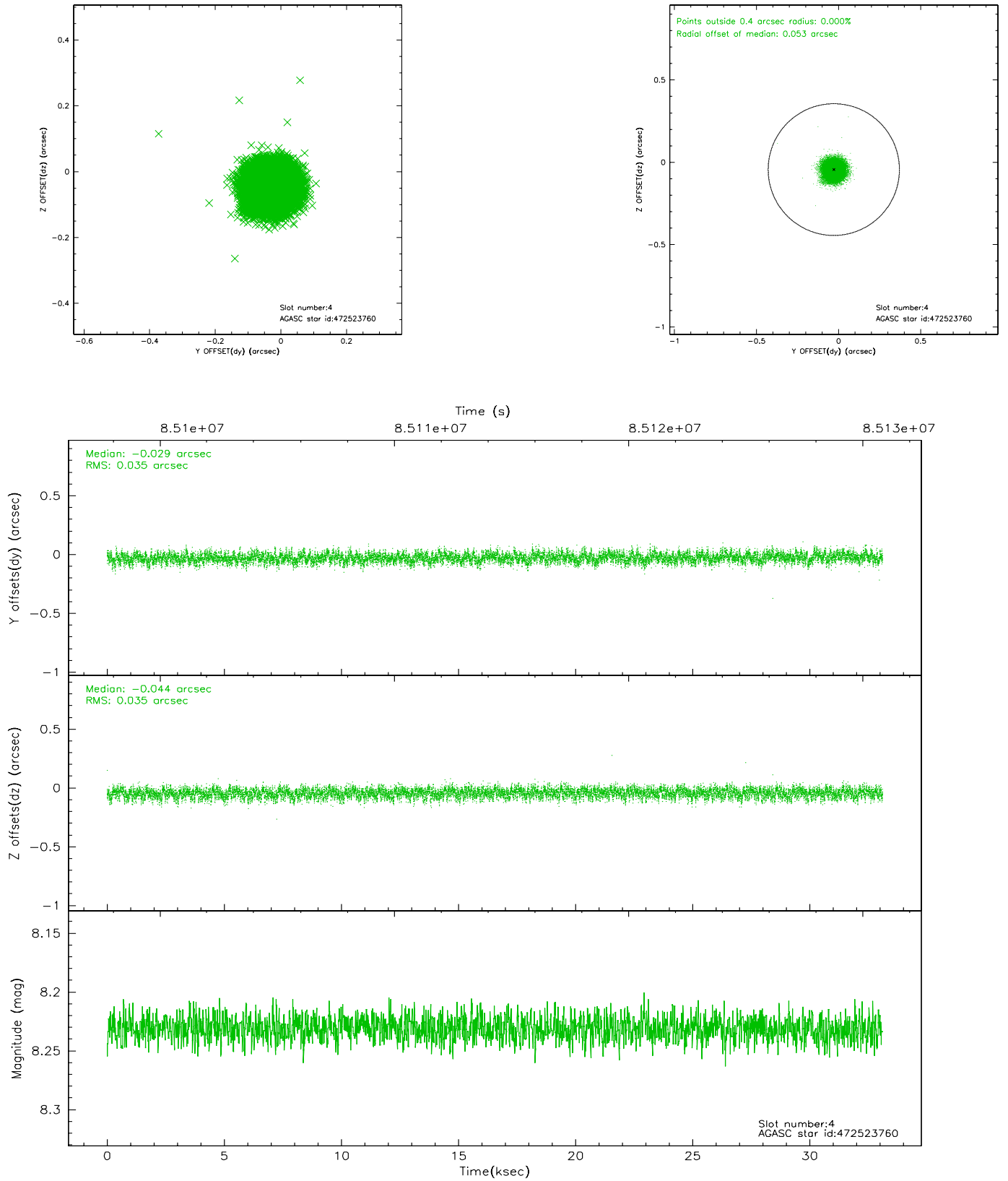
slot	status	id	mag	n_pts	med_dy	med_dz	dr1	dr2	ra	dec	mean_y	mean_z
0	FID	ACIS-S-2	7.10	8076	-0.005	0.004	0.007	0.012	0.000000	0.000000	-754.50	-1788.20
1	FID	ACIS-S-4	7.19	8077	-0.020	0.005	0.008	0.014	0.000000	0.000000	2158.74	120.22
2	FID	ACIS-S-6	7.38	8077	-0.003	-0.002	0.009	0.015	0.000000	0.000000	407.55	757.67
3	GUIDE	472535576	7.84	16152	-0.086	0.146	0.050	0.081	331.438373	46.291802	989.56	-2482.42
4	GUIDE	472523760	8.23	16153	-0.029	-0.044	0.054	0.085	331.645363	45.403260	1785.17	658.73
5	GUIDE	472659832	9.45	16144	0.078	0.002	0.079	0.131	332.780399	46.098139	-1815.51	-533.07
6	GUIDE	472655704	9.47	16139	-0.057	-0.015	0.104	0.168	332.167195	45.285228	738.22	1568.94
7	GUIDE	472646552	9.61	16142	0.091	-0.087	0.105	0.166	333.120915	45.571877	-1882.65	1544.06

2.4 Star Slots

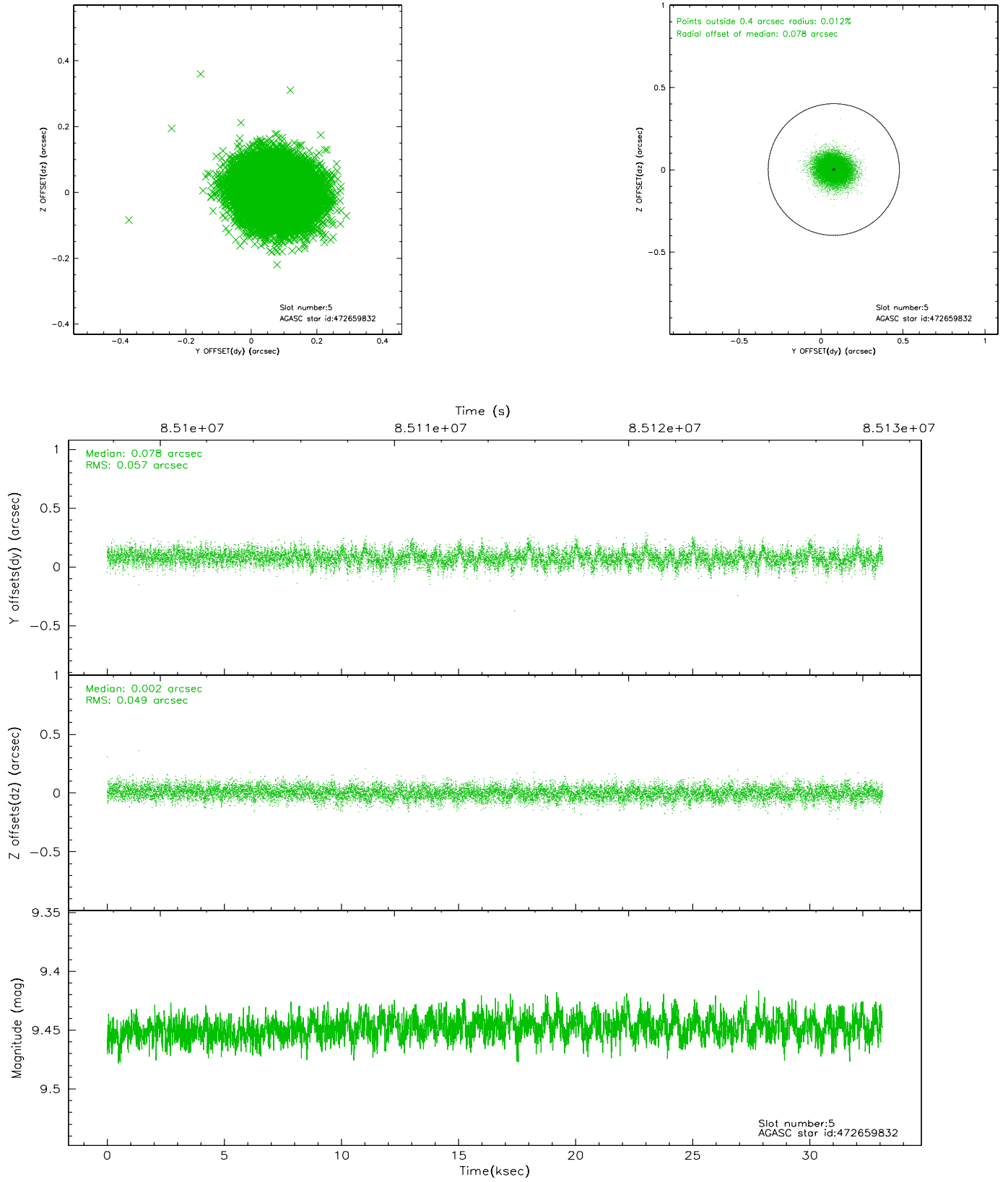
2.4.1 Slot 3



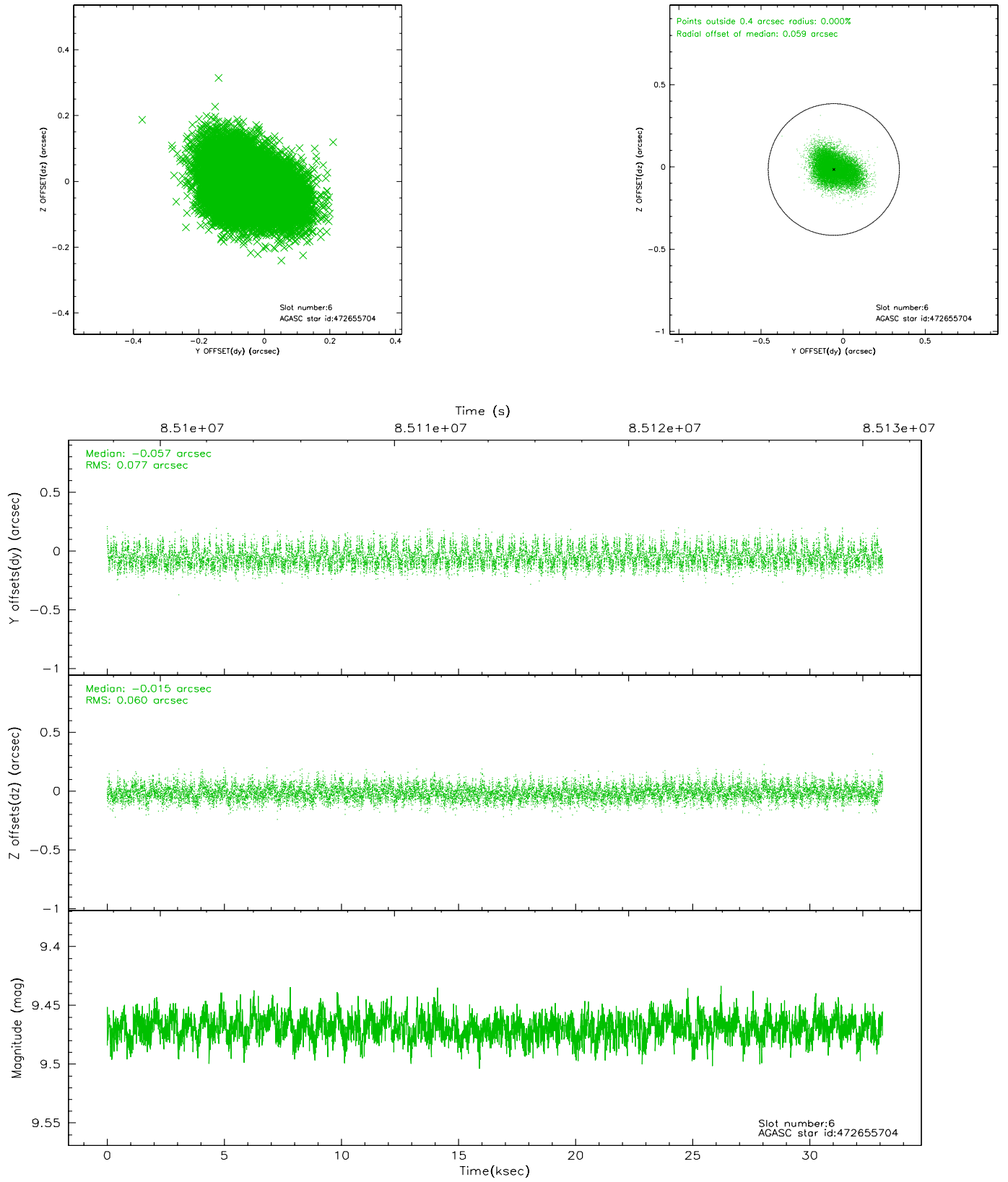
2.4.2 Slot 4



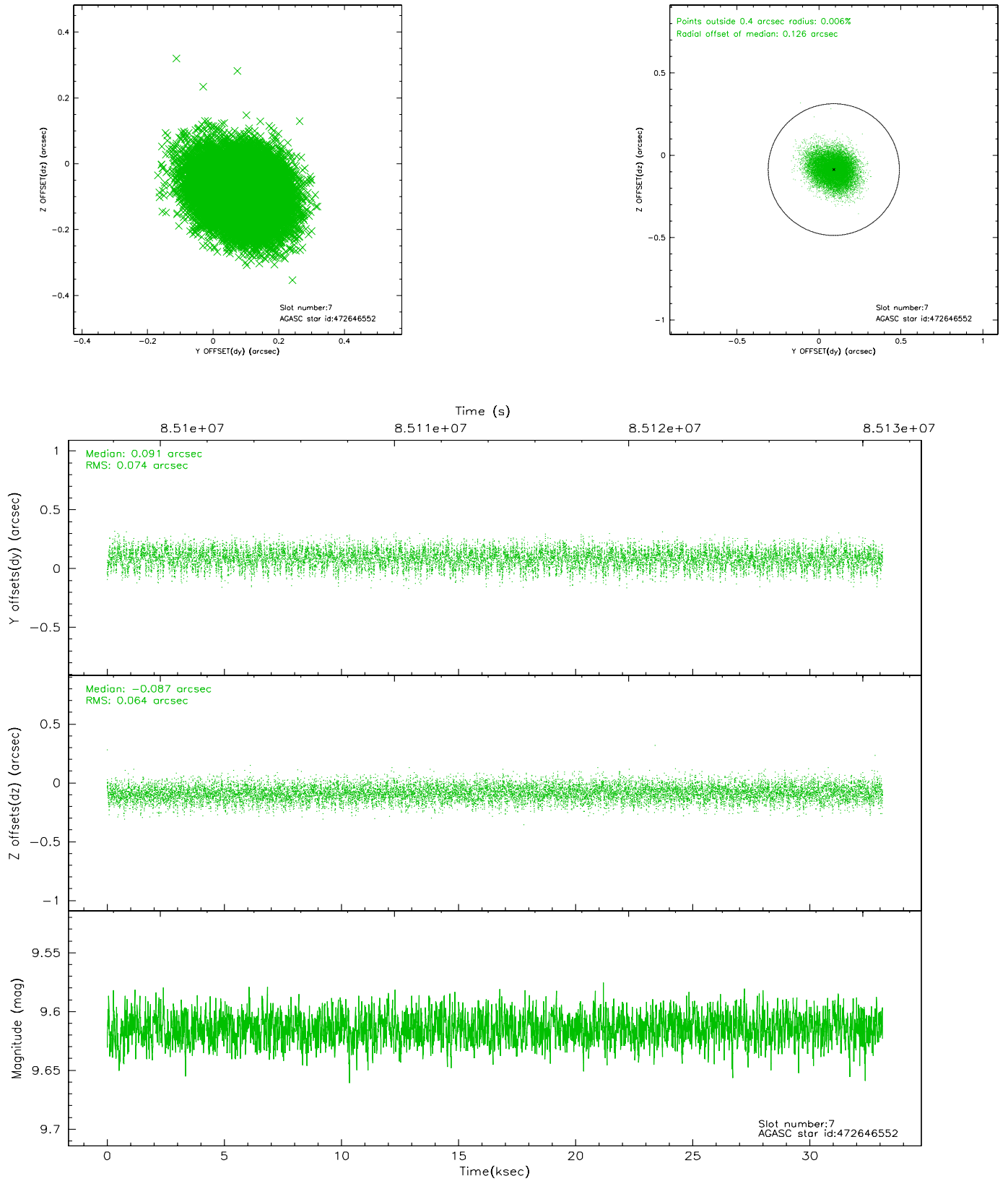
2.4.3 Slot 5



2.4.4 Slot 6

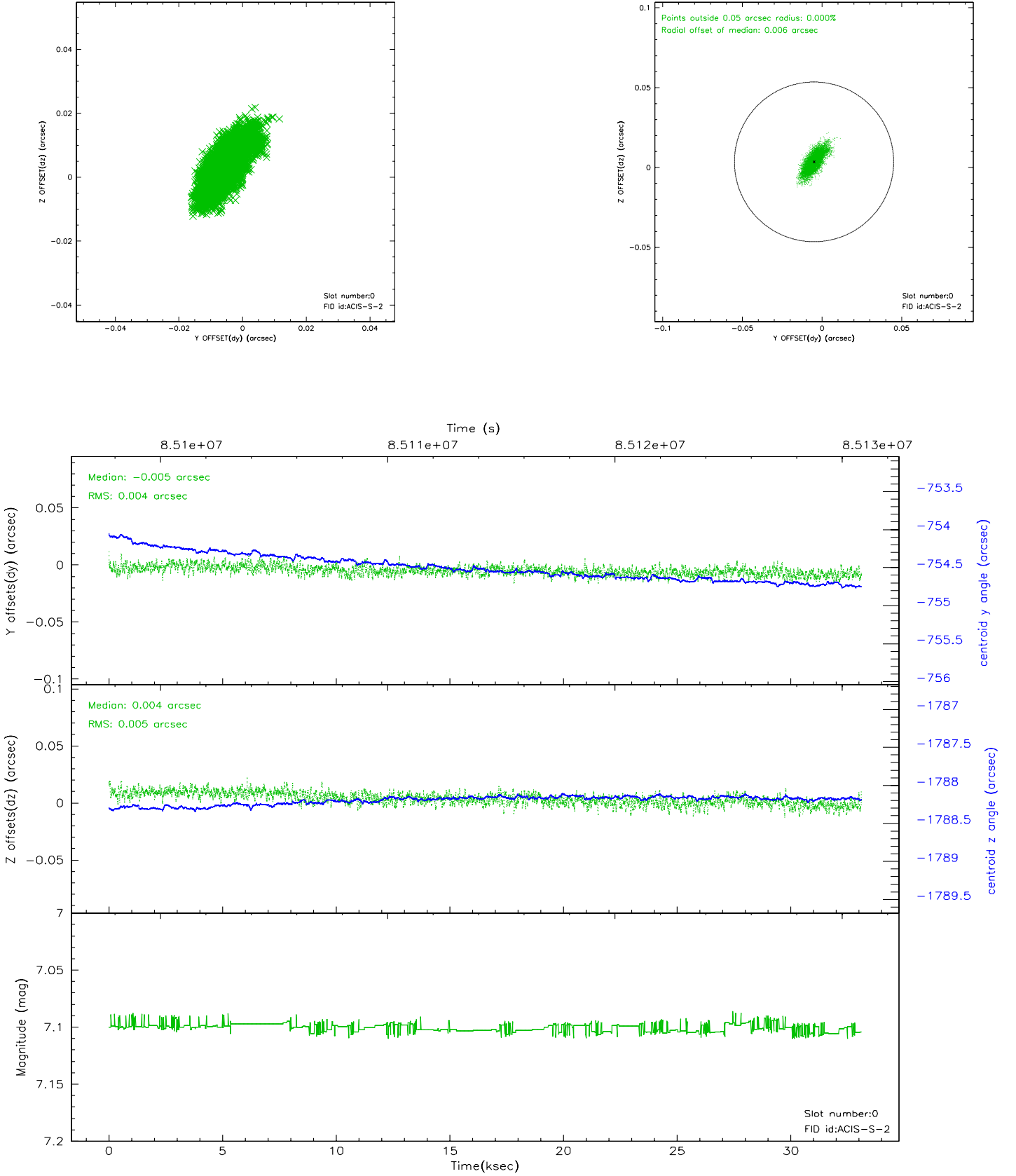


2.4.5 Slot 7

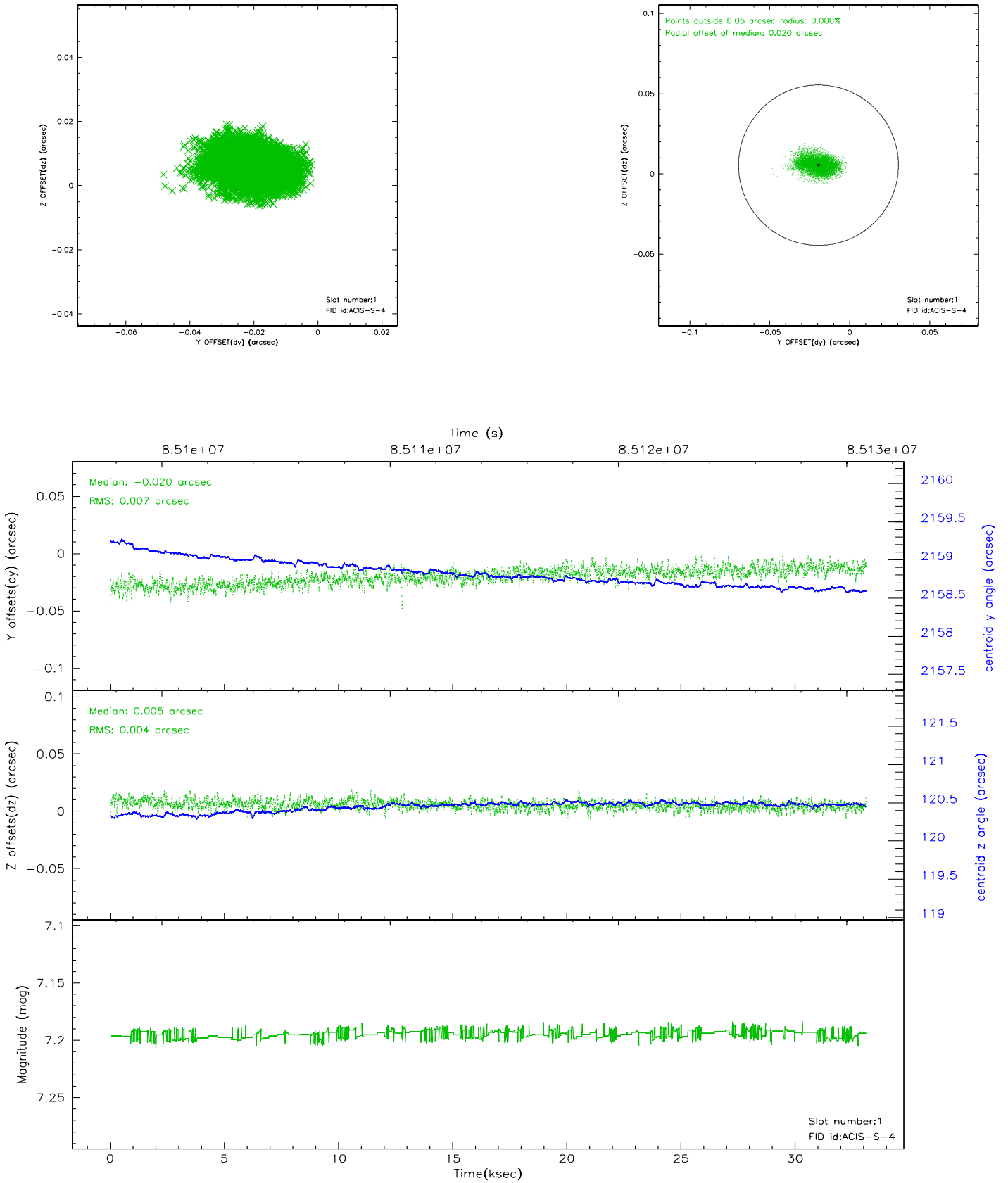


2.5 FID Slots

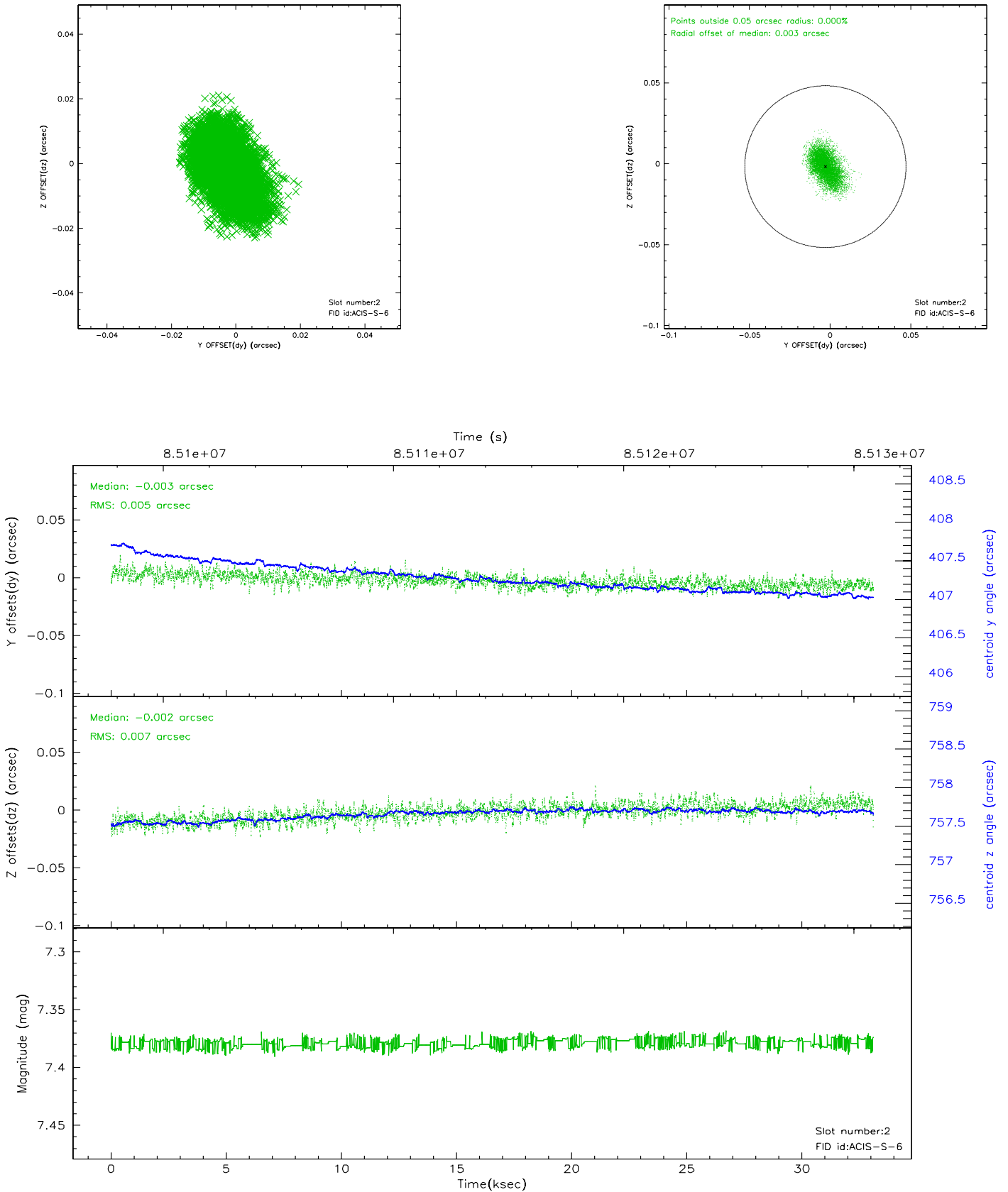
2.5.1 Slot 0



2.5.2 Slot 1



2.5.3 Slot 2

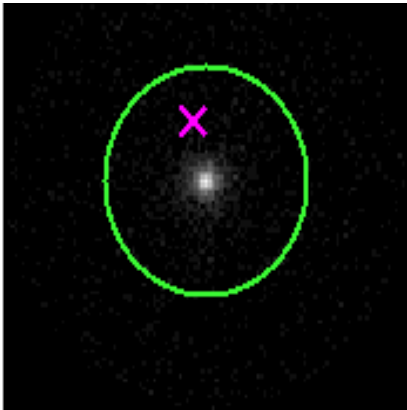


3 Gratings

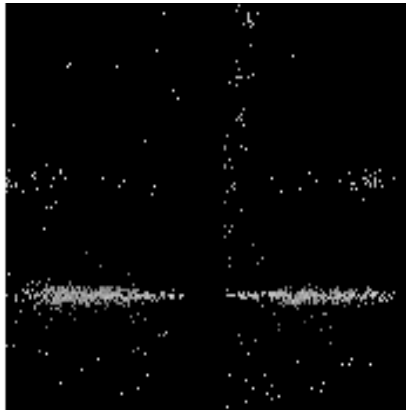
3.1 HEG Arm



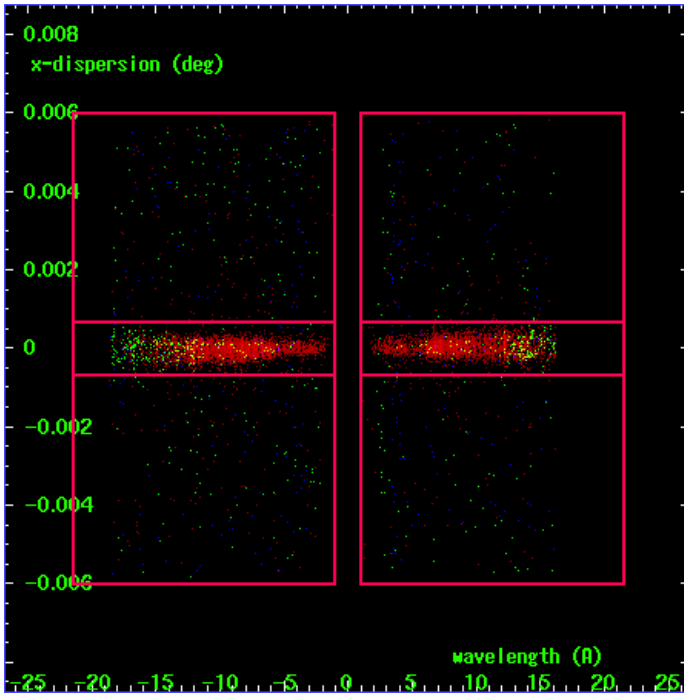
HEG Order Sort 123



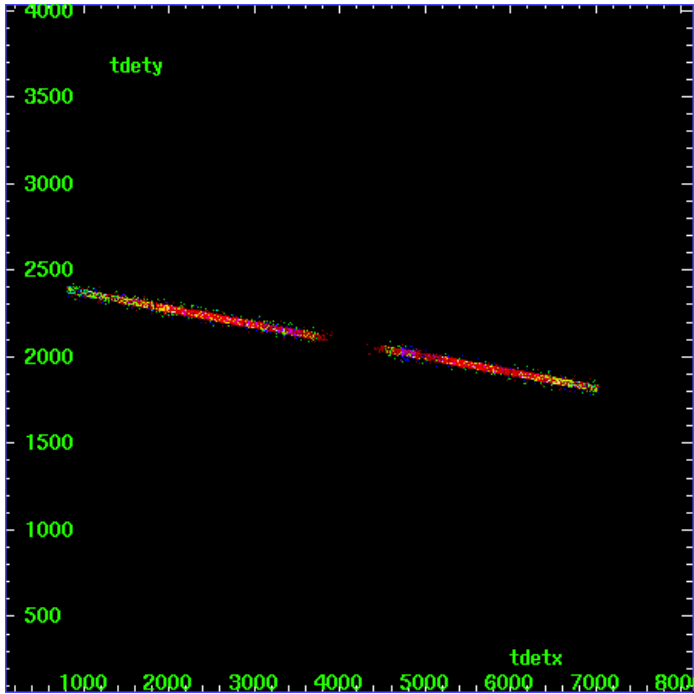
HEG Zero Order



HEG Order Sort ALL

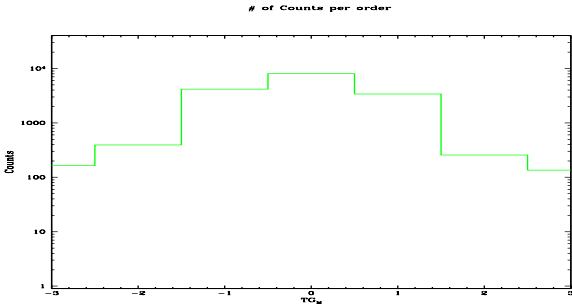


Spot Image HEG

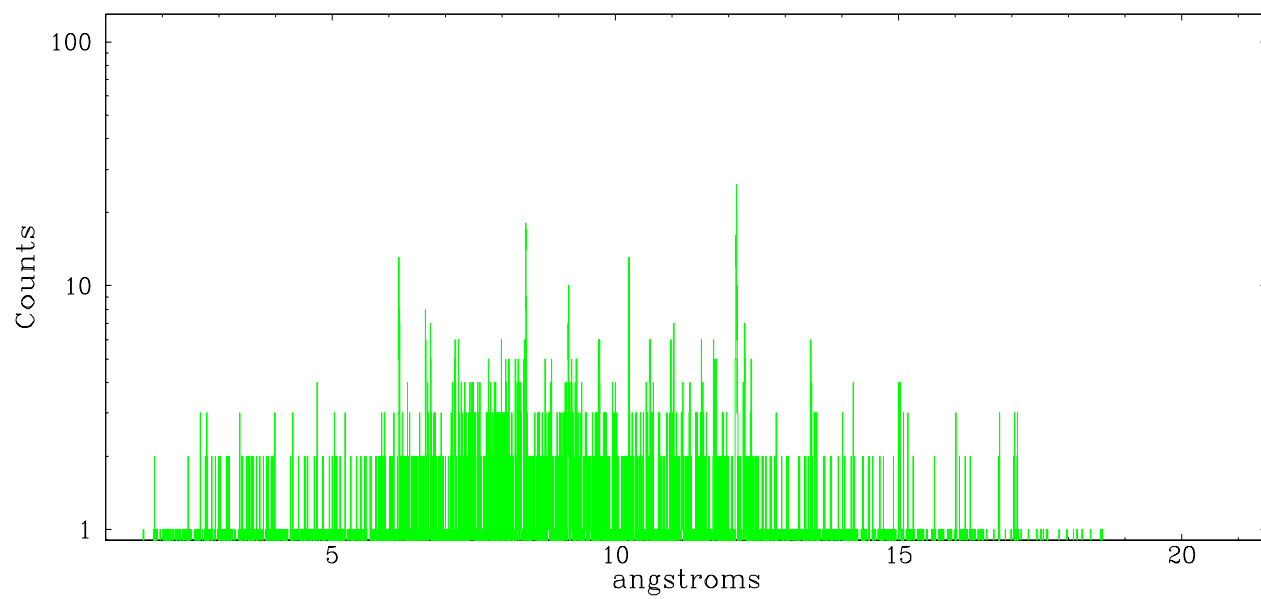


Full Detector HEG

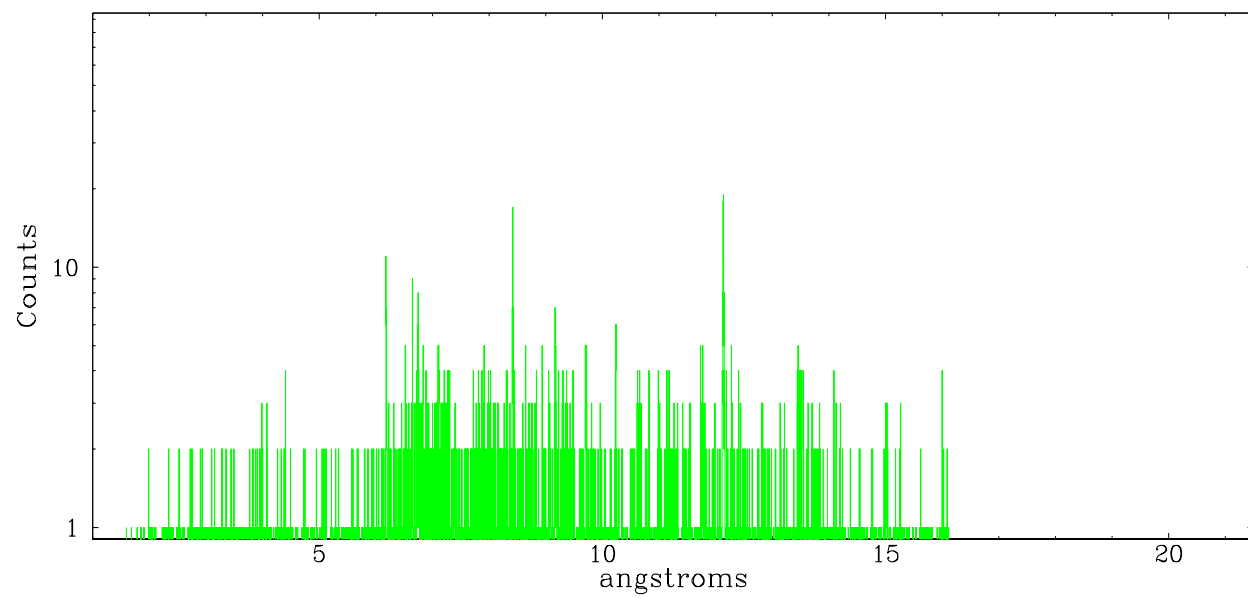
	order -3	order -2	order -1	order 0	order 1	order 2	order 3
Events	163	393	4182	8015	3391	257	135



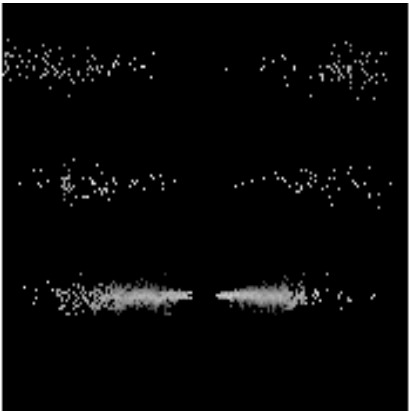
heg order -1



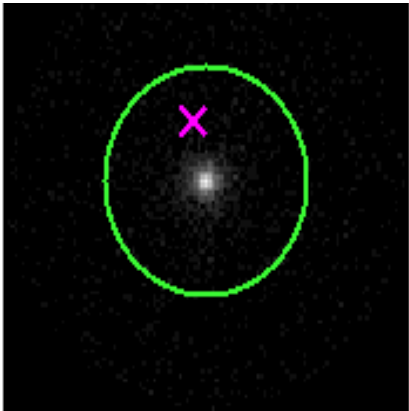
heg order +1



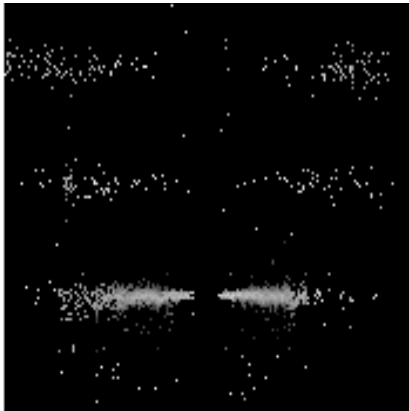
3.2 MEG Arm



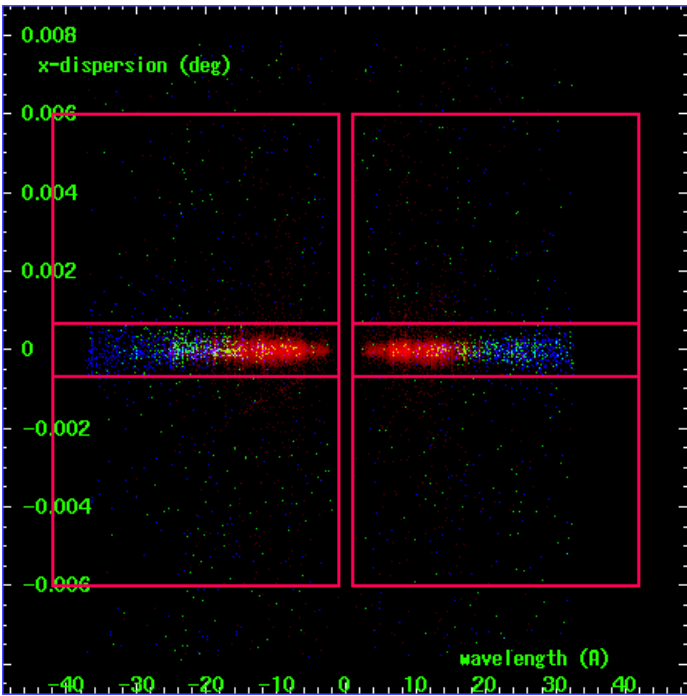
MEG Order Sort 123



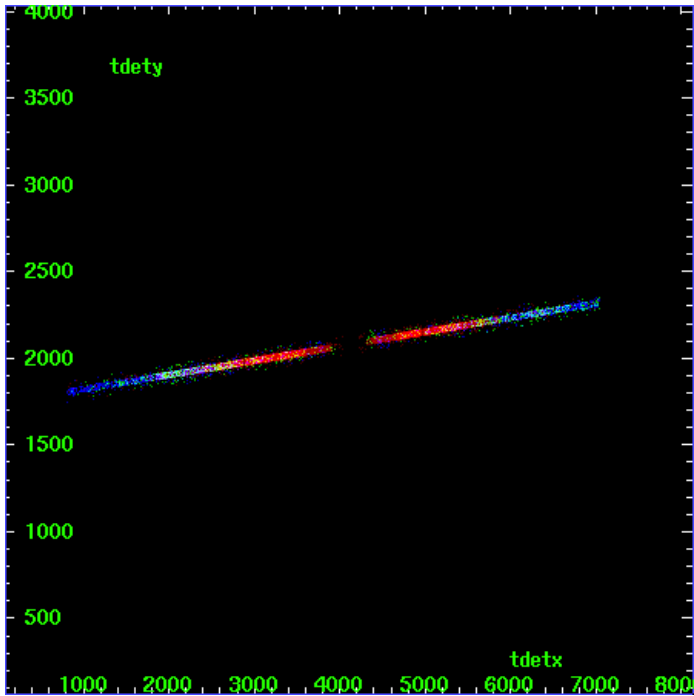
MEG Zero Order



MEG Order Sort ALL

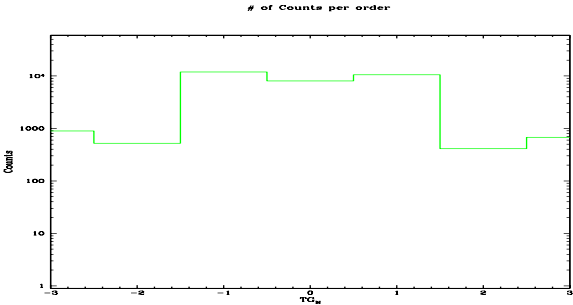


Spot Image MEG

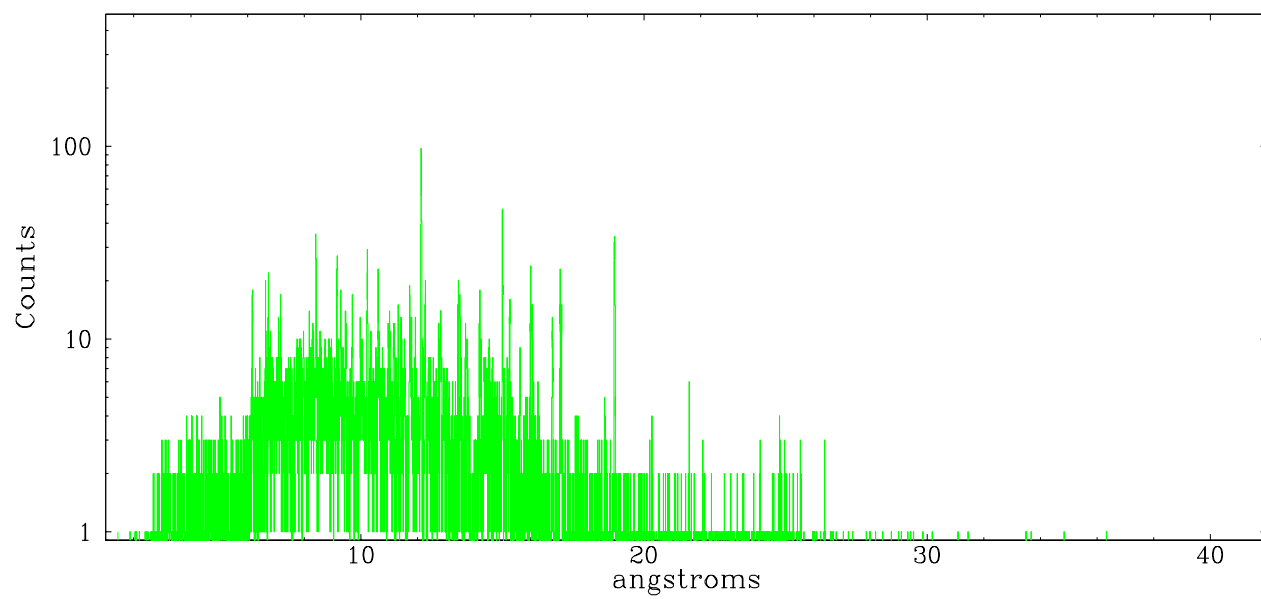


Full Detector MEG

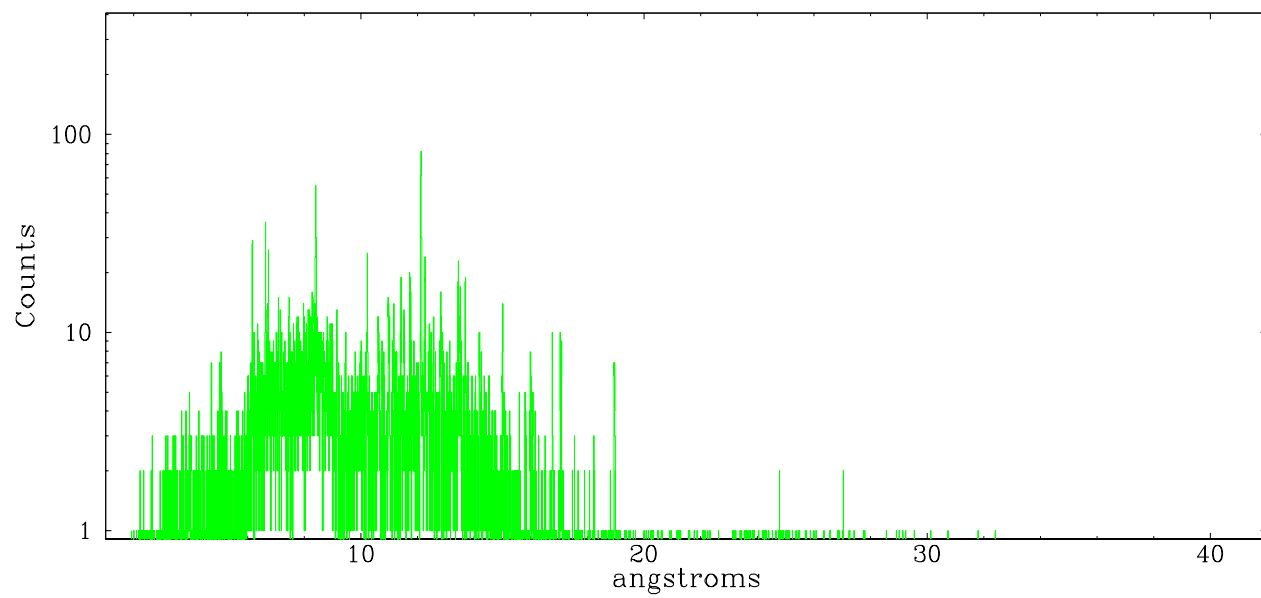
	order -3	order -2	order -1	order 0	order 1	order 2	order 3
Events	899	520	11922	8015	10572	411	676



meg order -1



meg order +1



A Summary

A.1 Status

V&V Scientist	David Huenemoerder
V&V Date (YYYY-MM-DD)	2007.06.11
V&V Edition	1
V&V Disposition and Status	OK
V&V Charge Time	32.505

A.2 Comments

Caveat: due to an 0.5 day ephemeris observer error, comments on the phase in the header 'OBJECT' are wrong.