

V&V Reference Report

L2 ASCDS Version : 7.6.9

Observation 583 - L2 Version 001
Chandra X-Ray Center

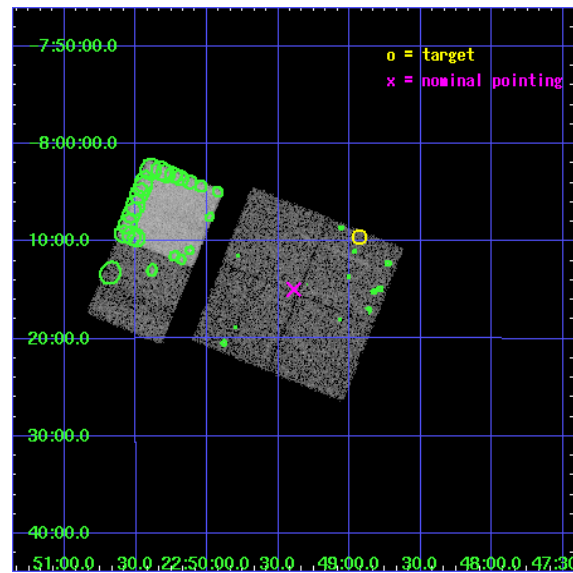
L2 Processing Date : Nov 2 2006

Contents

1	Front	2
2	OBI	3
2.1	OBI	3
2.1.1	Images	3
2.1.2	Bias	3
2.1.3	Parameters	4
2.1.4	Events	4
2.2	Compared Parameters	5
2.3	Aspect	6
2.4	Star Slots	9
2.4.1	Slot 0	9
2.4.2	Slot 1	10
2.4.3	Slot 2	11
2.4.4	Slot 6	12
2.4.5	Slot 7	13
2.5	FID Slots	14
2.5.1	Slot 4	14
2.5.2	Slot 5	15
3	Point Sources	16
A	Summary	17
A.1	Status	17
A.2	Comments	17

1 Front

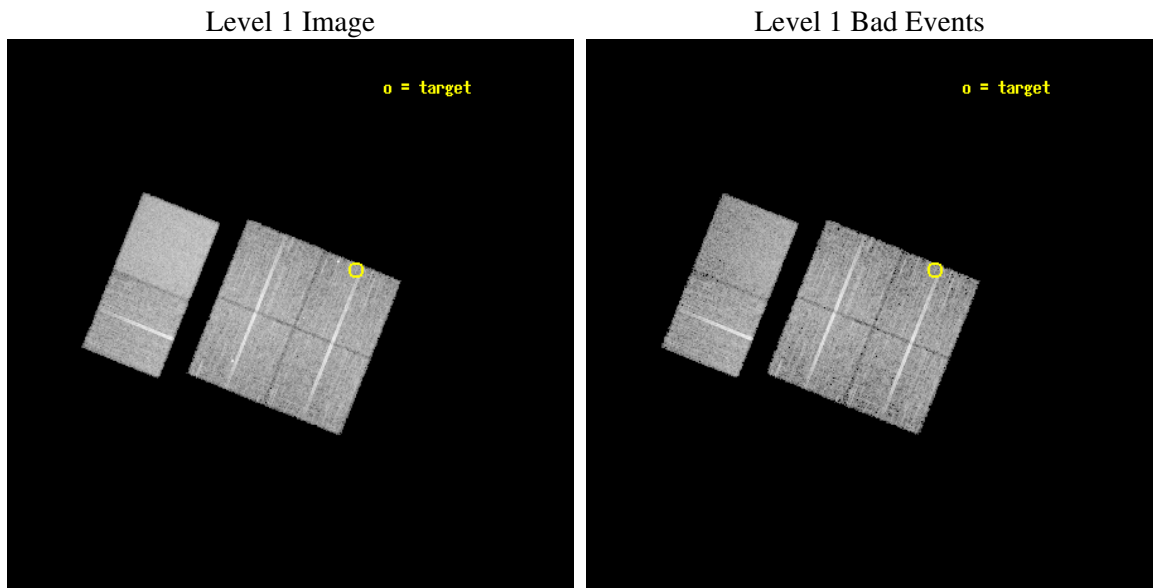
seq_num	100001
obs_id	583
title	VENUS AND MARS: THE CLOSEST PLANETARY ANALOGUES TO COMETS
observer	Dr. Konrad Dennerl
object	VENUS
dtcycle	0
cycle	P
ra_targ	342.23258
dec_targ	-8.15881
ra_nom	342.34755209611
dec_nom	-8.249341084779
roll_nom	291.89411866228
revision	2
ontime	11859.118130475
livetime	11708.950836004
ontime0	11862.35905081
ontime1	11859.118130475
ontime2	11859.11809057
ontime3	11859.11809057
ontime6	11855.877140343
ontime7	11862.359080732
l2events	88472



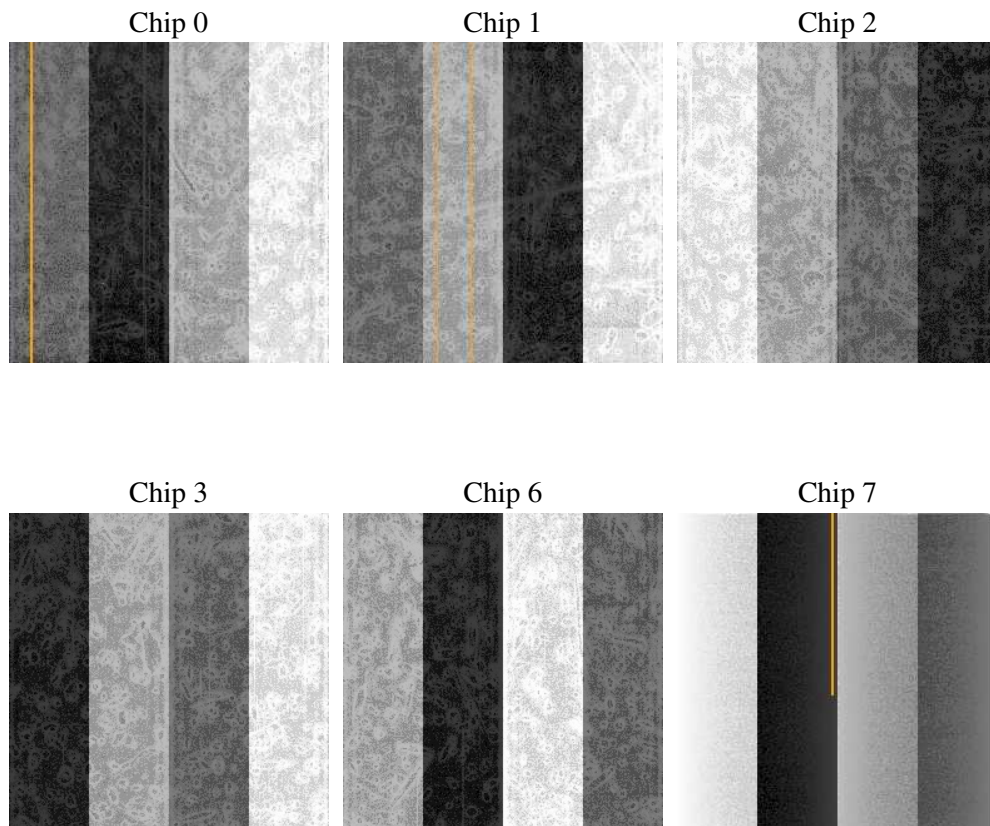
2 OBI

2.1 OBI

2.1.1 Images



2.1.2 Bias



2.1.3 Parameters

obi_num	0
ascdsver	7.6.9
caldbver	3.2.3
date	2006-11-02T20:00:05
revision	2

sched_exp_time	11900.000000
ontime	11865.288225368
ontime0	11868.529145703
ontime1	11865.288225368
ontime2	11865.288185462
ontime3	11865.288185462
ontime6	11862.047205329
ontime7	11868.529175624
l1events	466458

2.1.4 Events

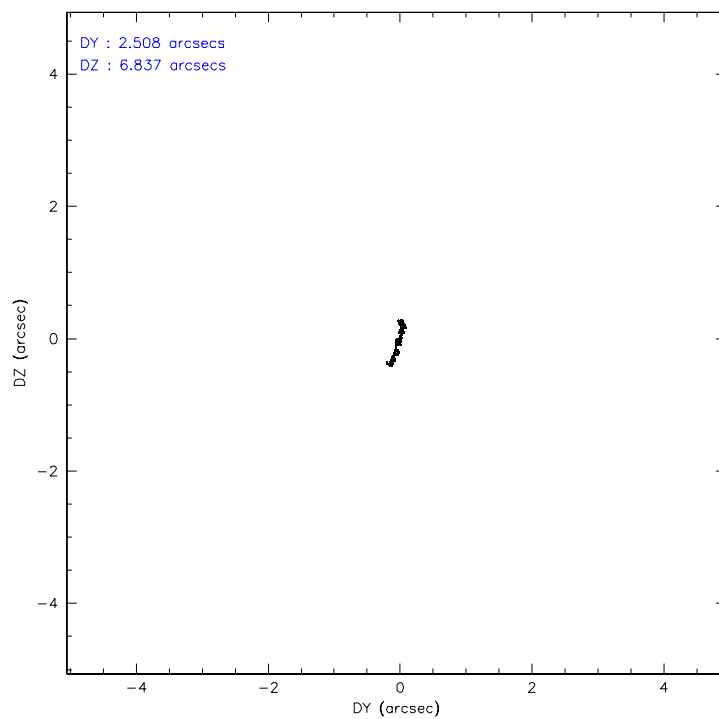
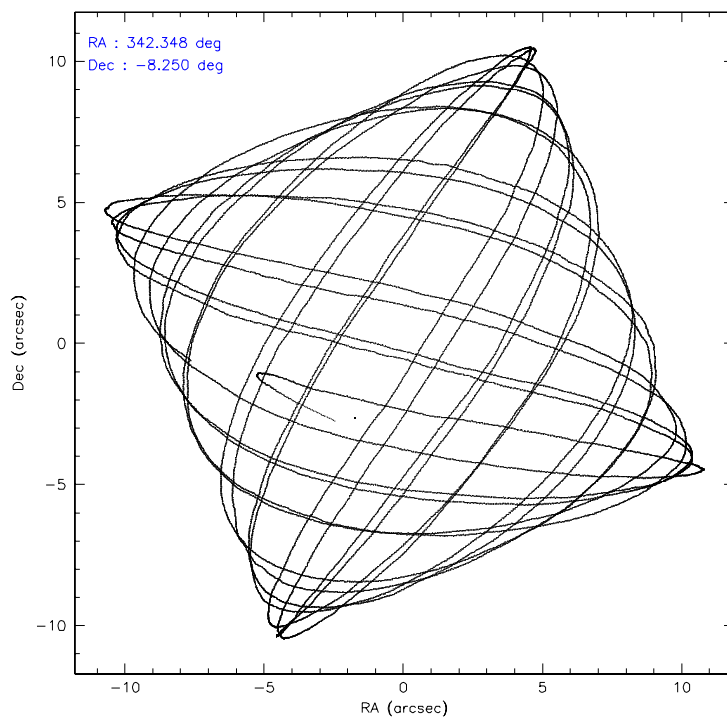
	ccd 0	ccd 1	ccd 2	ccd 3	ccd 6	ccd 7
level 1 events	66595	69036	72876	72974	78595	106382
rejected events	57163	58408	63513	63943	68792	58635
rejected %	85%	84%	87%	87%	87%	55%

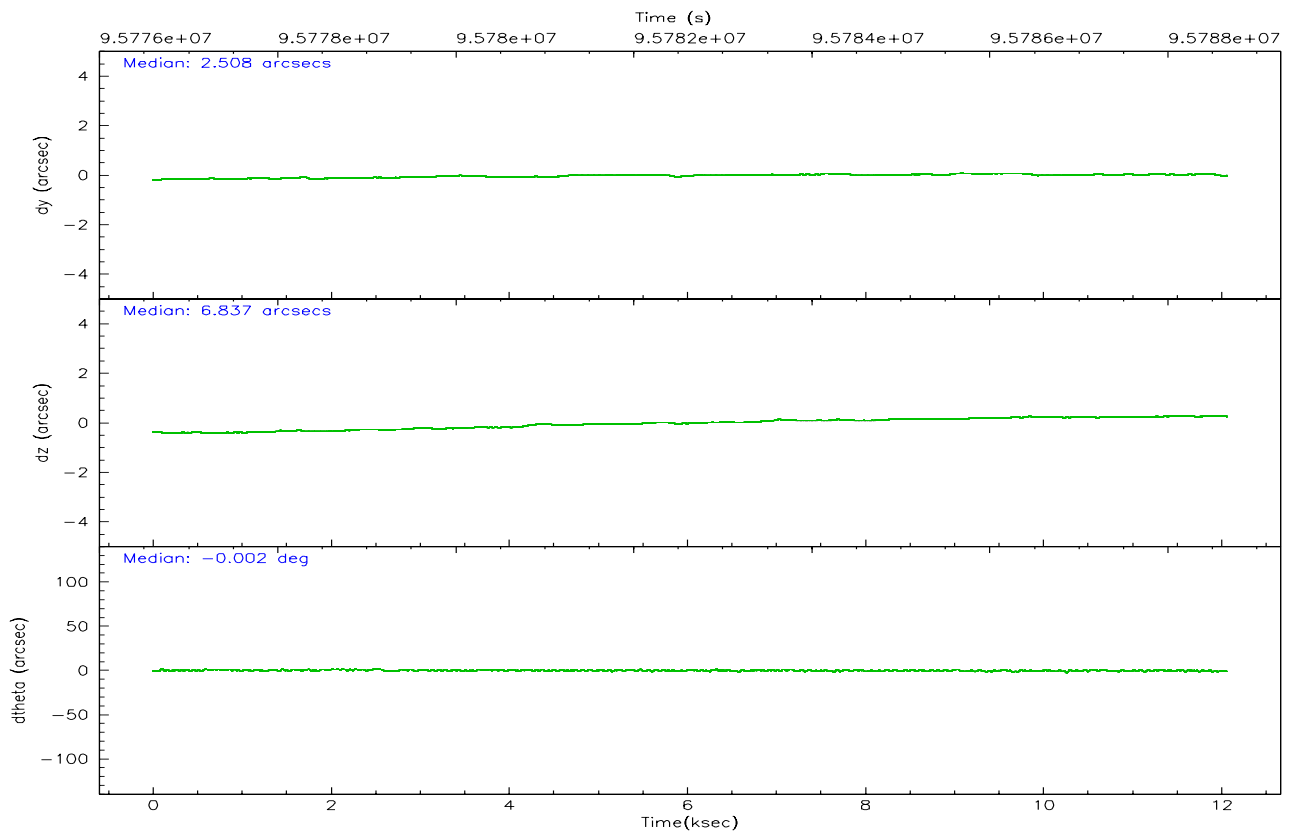
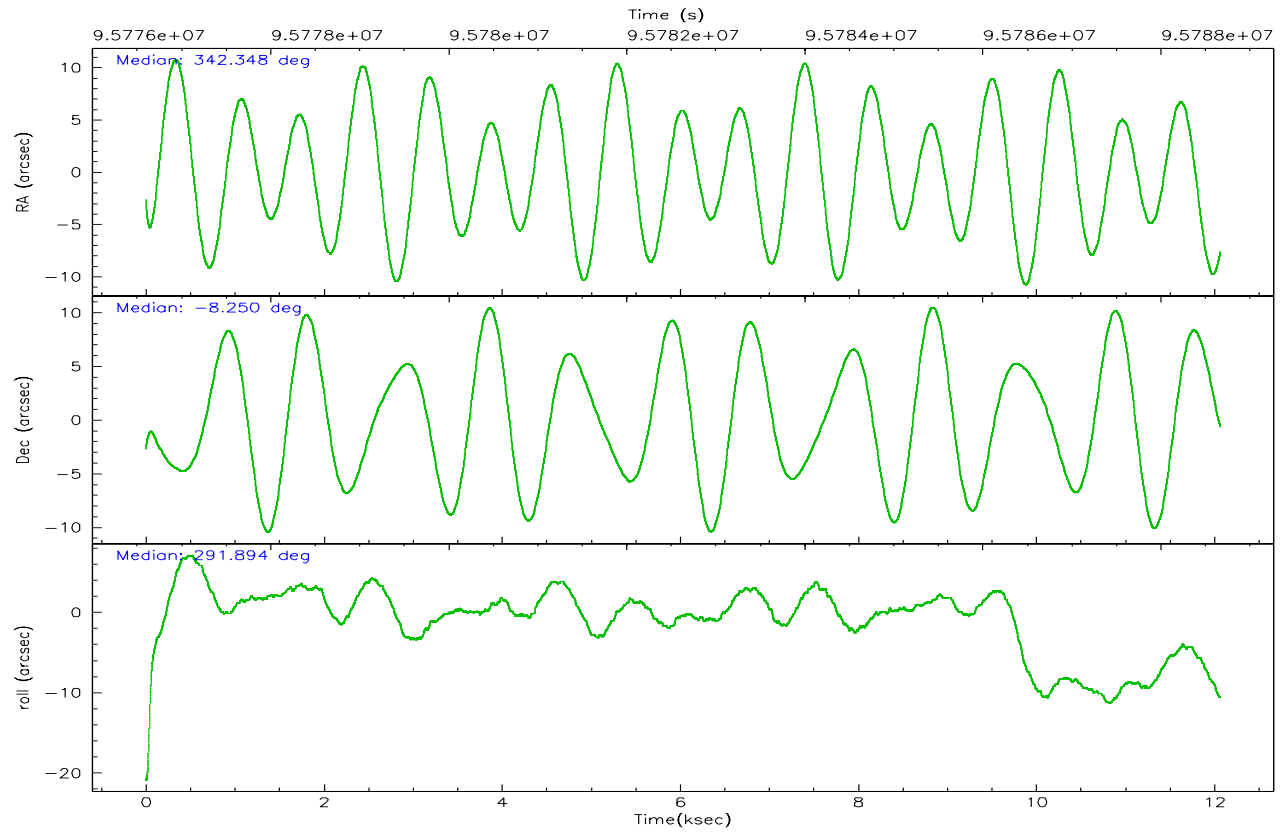
	ccd 0	ccd 1	ccd 2	ccd 3	ccd 6	ccd 7
grade 0 events	4329	4959	4380	4152	4530	3854
	6%	7%	6%	5%	5%	3%
grade 1 events	27	74	38	52	49	52
	0%	0%	0%	0%	0%	0%
grade 2 events	1955	2013	1963	1857	1965	11069
	2%	2%	2%	2%	2%	10%
grade 3 events	878	984	806	763	829	2685
	1%	1%	1%	1%	1%	2%
grade 4 events	757	886	721	794	854	2588
	1%	1%	0%	1%	1%	2%
grade 5 events	2501	2707	2383	2730	3046	6339
	3%	3%	3%	3%	3%	5%
grade 6 events	1519	1786	1496	1465	1629	27591
	2%	2%	2%	2%	2%	25%
grade 7 events	54629	55627	61089	61161	65693	52204
	82%	80%	83%	83%	83%	49%

2.2 Compared Parameters

Parameter	Planned	Actual	Parameter	Planned	Actual
Instrument	ACIS	ACIS	Obspar format version number	6	6
Detector	ACIS-012367	ACIS-012367	Obspar file type	PREDICTED	ACTUAL
Grating	NONE	NONE	Obspar update status	NONE	UPDATED
Data mode	VFAINT	VFAINT	Number of optional ACIS chips dropped	0	0
Observation mode	POINTING	POINTING	On-chip summing requested	N	N
Pointing RA	342.325726	342.3475520961148	Subarray requested	NONE	NONE
Pointing Dec	-8.232360	-8.249341084779012	Alternating exposures requested	N	N
Pointing Roll	291.682320	291.8941186622782	Primary exposure time	3.200000	3.2
Window start time	95299264.184000	95299264.184000			
Window stop time	95990464.184000	95990464.184000			
SIM focus pos (mm)	-0.782348	-0.7809083437167272			
SIM defocus (mm)	0	0.001439871863259334			
SIM translation stage pos (mm)	-233.592463	-233.5874344608287			
SIM translation stage offset (mm)	0	-0.005018542100998502			
Observation start time	95776764.184000	95775796.26774199			
Observation start date	2001-01-13T12:38:20	2001-01-13T12:23:16			
Observation end time	95788664.184000	95789266.81826			
Observation end date	2001-01-13T15:56:40	2001-01-13T16:07:46			
Read mode	TIMED	TIMED			

2.3 Aspect



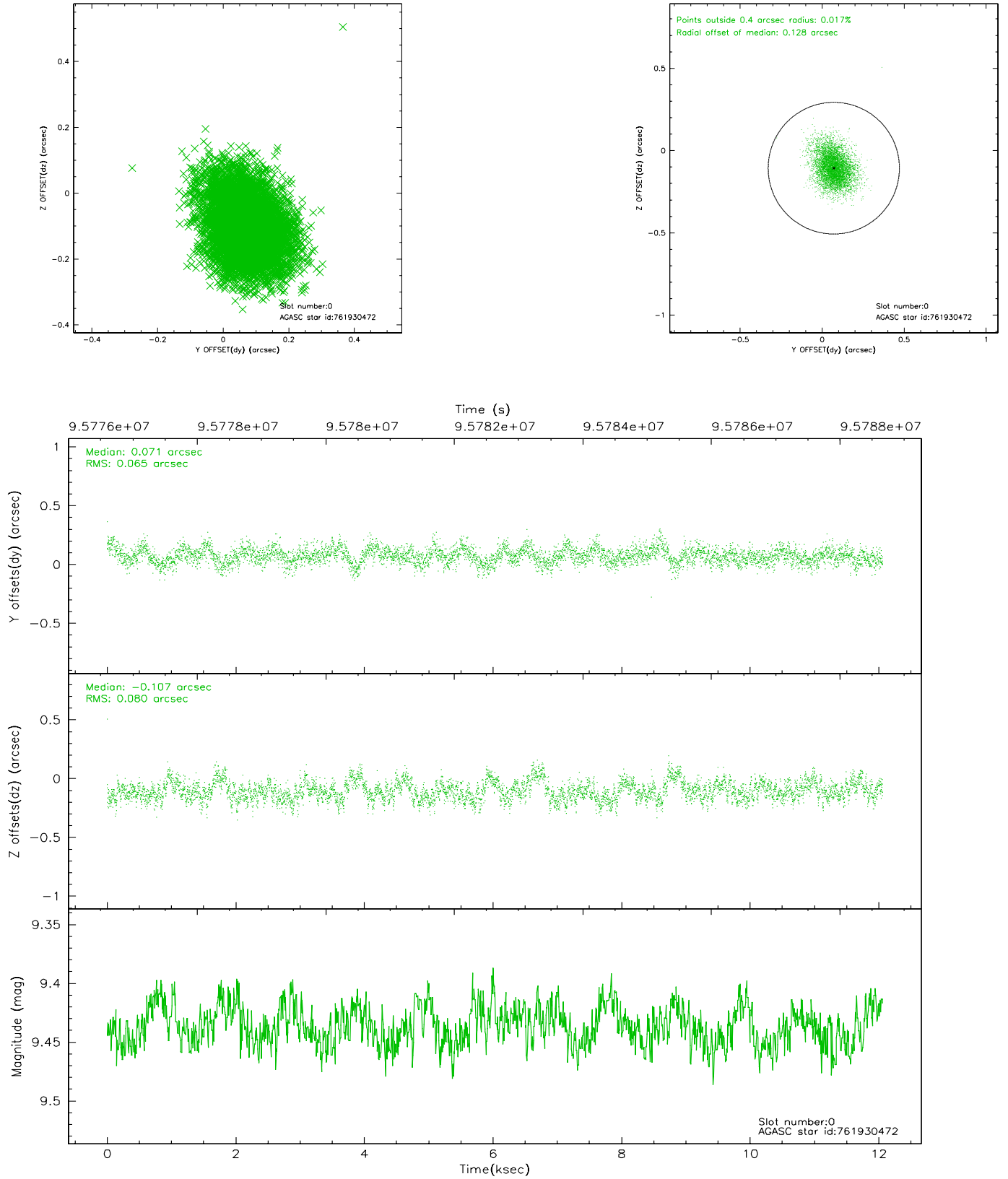


Slot Statistics

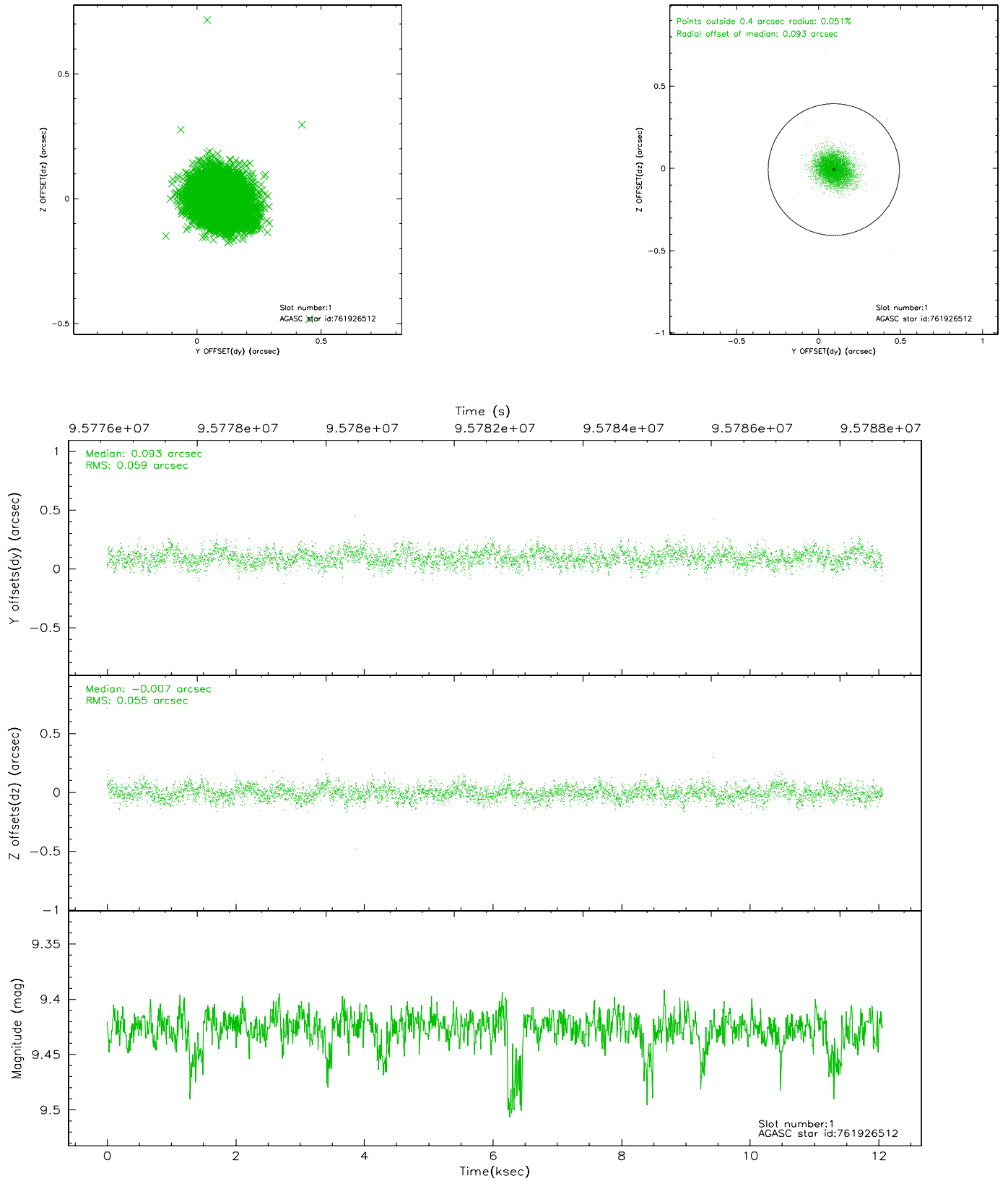
slot	status	id	mag	n_pts	med_dy	med_dz	dr1	dr2	ra	dec	mean_y	mean_z
0	GUIDE	761930472	9.44	5880	0.071	-0.107	0.108	0.181	342.231029	-8.864868	1990.68	-1155.03
1	GUIDE	761926512	9.43	5882	0.093	-0.007	0.085	0.137	342.834085	-8.658731	2095.50	1113.05
2	GUIDE	686954080	8.34	5883	-0.173	0.046	0.089	0.142	342.559336	-7.459837	-2276.82	1802.00
3	OMITTED		0.00	0	0.000	0.000	0.000	0.000	0.000000	0.000000	0.00	0.00
4	FID	ACIS-I-1	7.24	2940	-0.036	0.057	0.007	0.014	0.000000	0.000000	937.29	-830.14
5	FID	ACIS-I-6	7.26	2937	-0.024	-0.013	0.007	0.014	0.000000	0.000000	403.34	1711.40
6	GUIDE	761923880	9.21	5876	0.029	0.005	0.091	0.144	342.941535	-8.558862	1902.53	1601.99
7	GUIDE	761923720	9.02	5878	-0.018	0.057	0.071	0.114	342.814332	-8.300608	871.72	1525.98

2.4 Star Slots

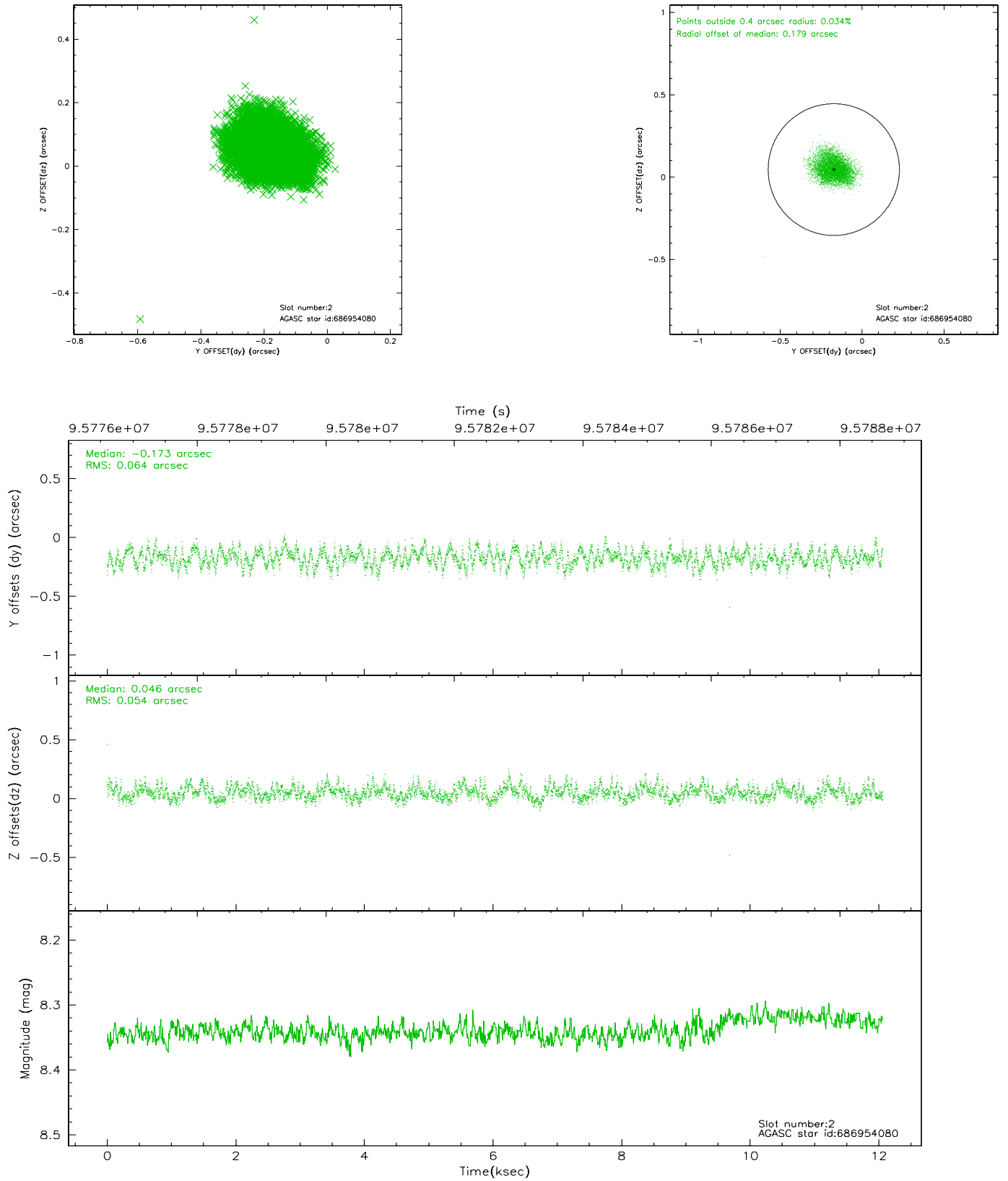
2.4.1 Slot 0



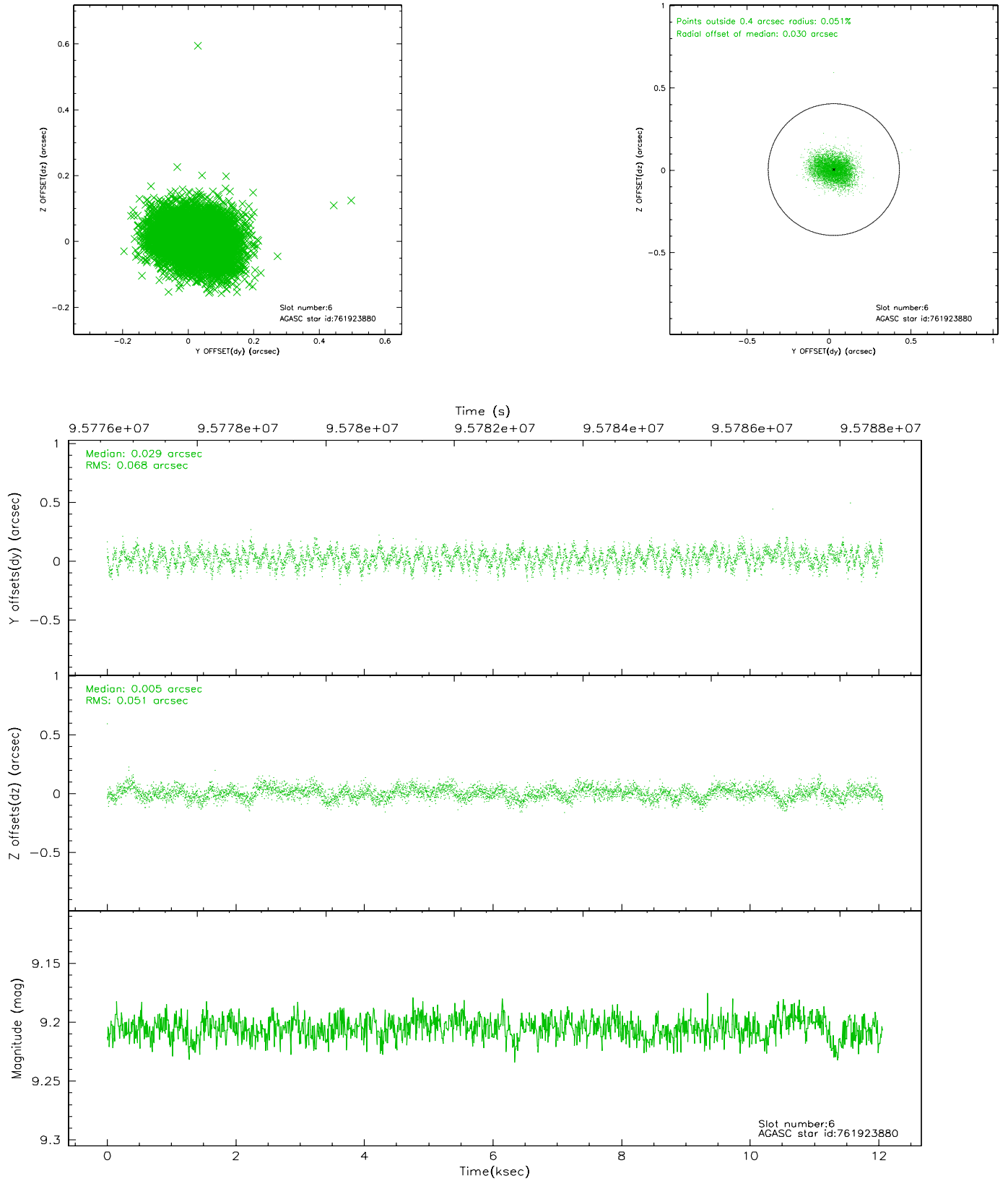
2.4.2 Slot 1



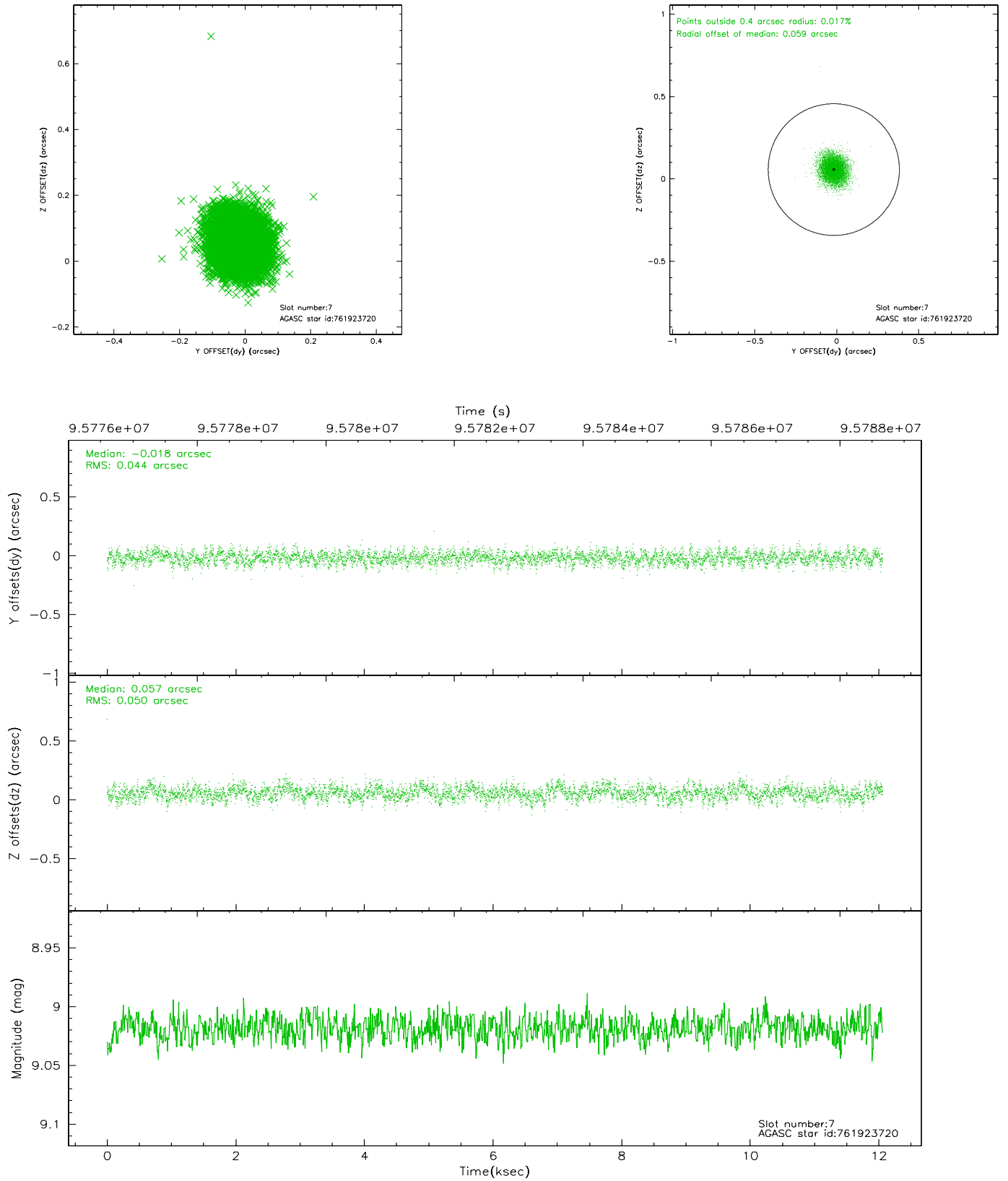
2.4.3 Slot 2



2.4.4 Slot 6

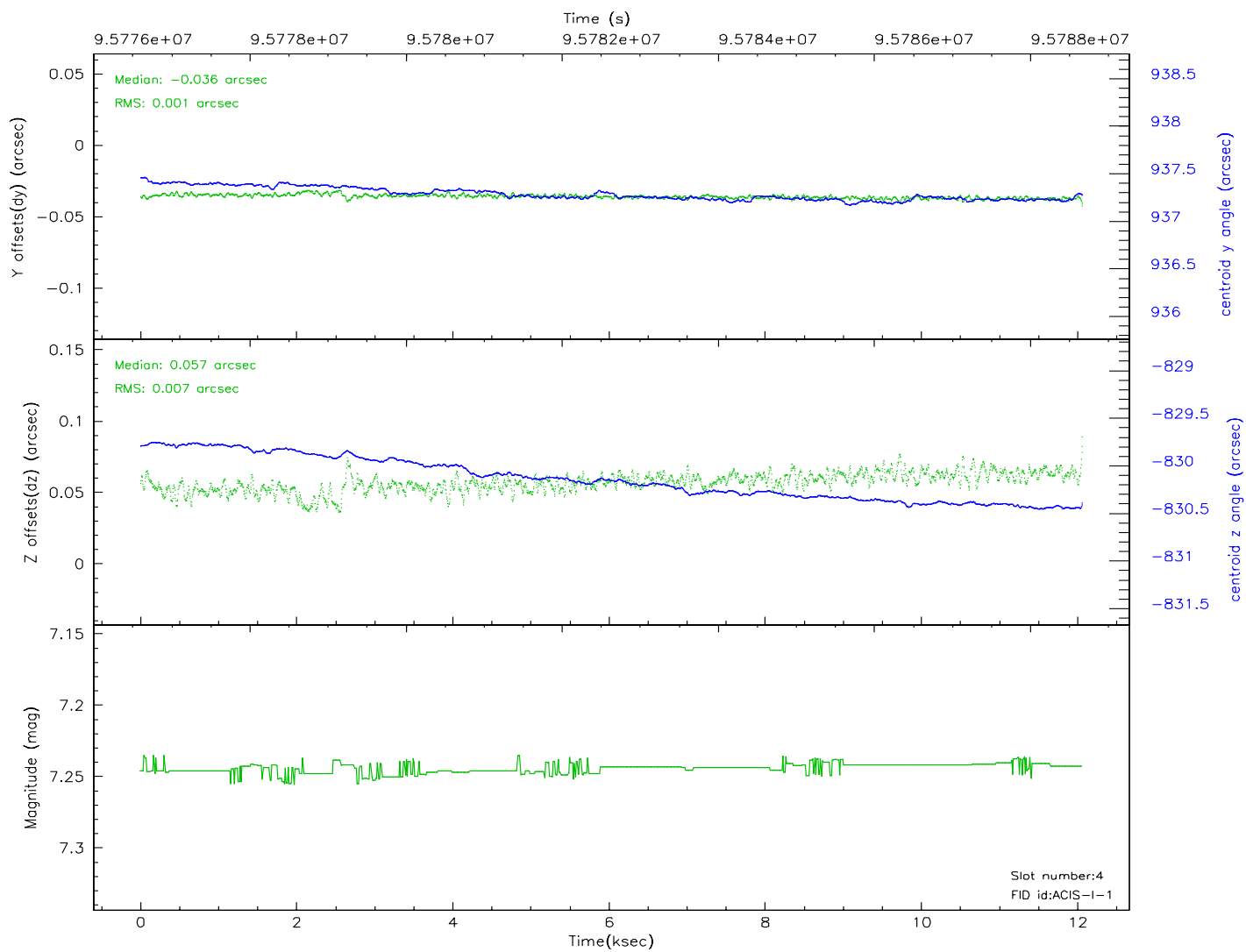
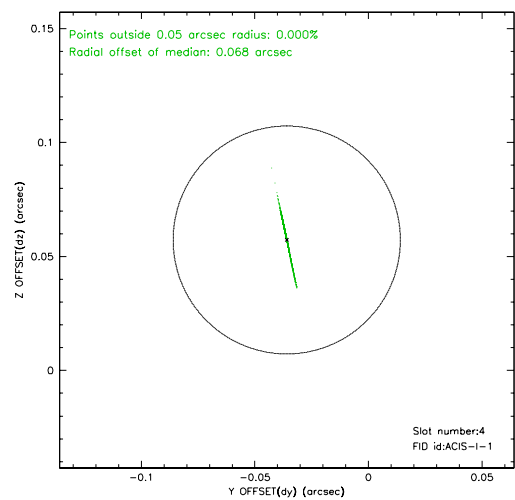
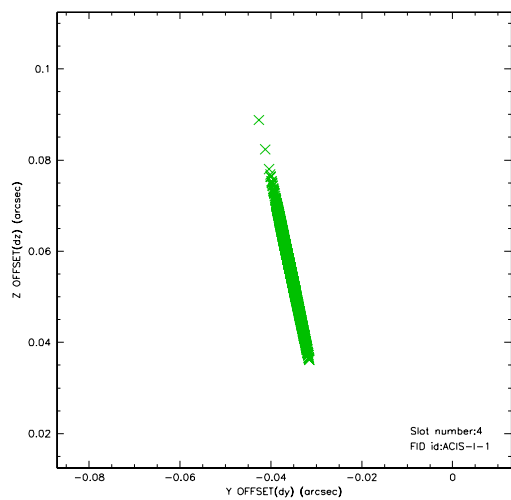


2.4.5 Slot 7

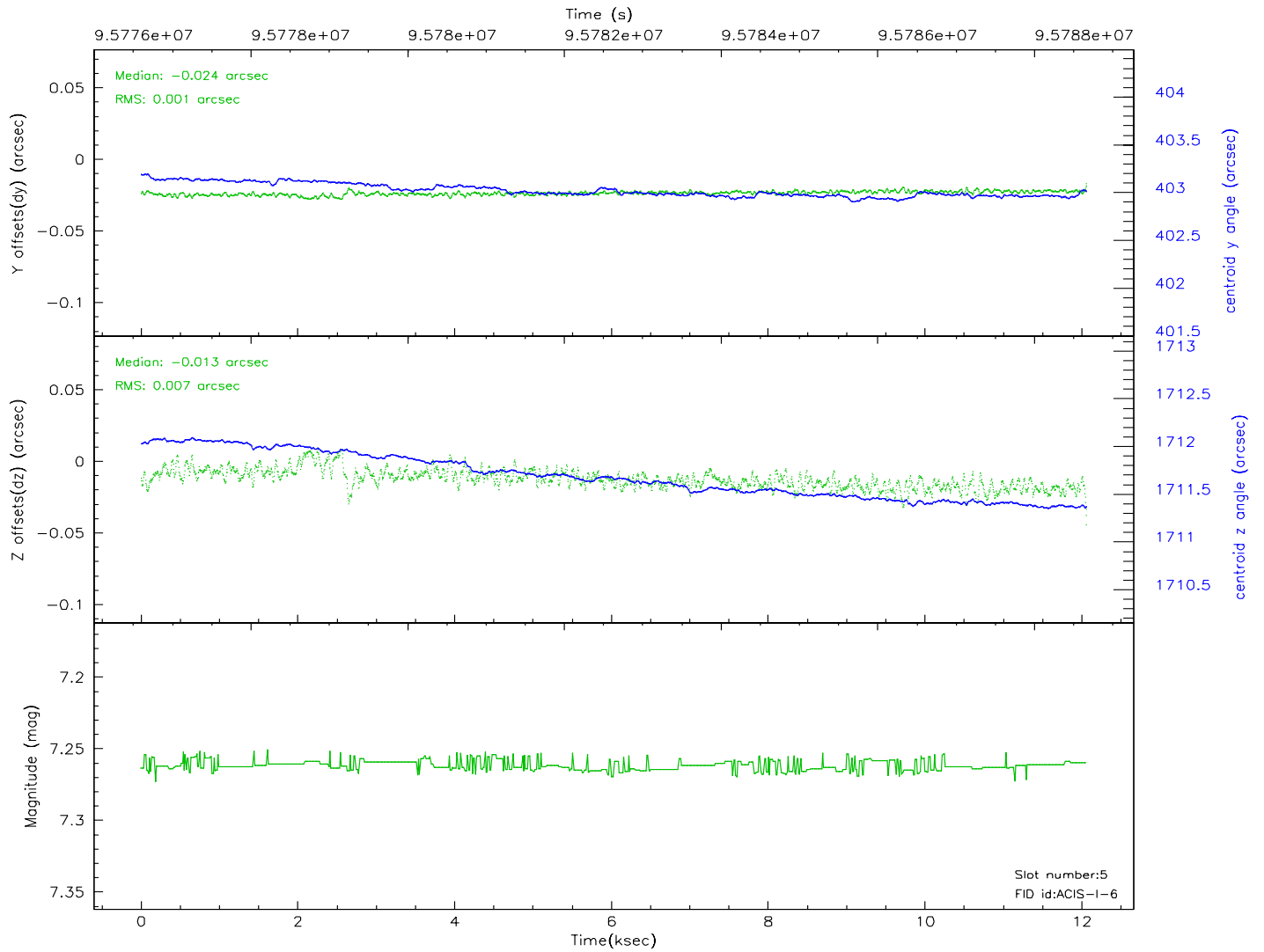
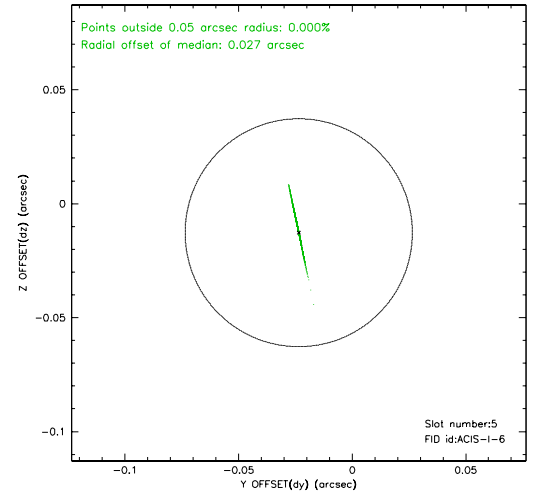
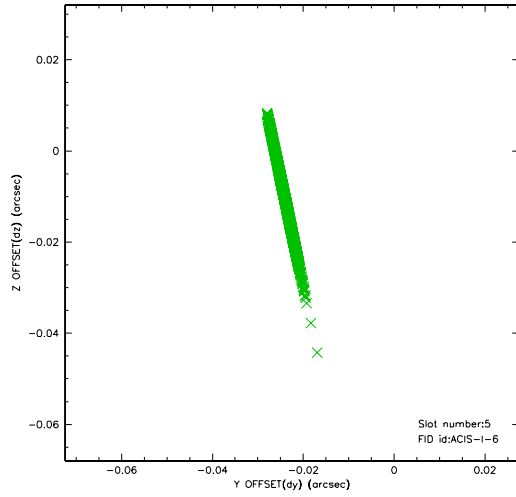


2.5 FID Slots

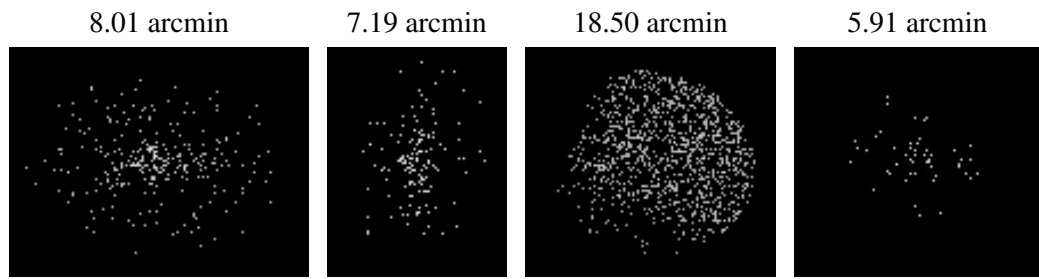
2.5.1 Slot 4



2.5.2 Slot 5



3 Point Sources



A Summary

A.1 Status

V&V Scientist	Jen Lauer
V&V Date (YYYY-MM-DD)	2006.11.06
V&V Edition	1
V&V Disposition and Status	OK
V&V Charge Time	11.852

A.2 Comments

Window constraint met. Moving target observation; Venus is not visible.

The fid light in slot 3 was omitted from the aspect solution due to poor data quality. The aspect solution is not expected to be degraded by removing one fid light from the solution.