

# V&V Reference Report

## L2 ASCDS Version : 7.6.9

Observation 2475 - L2 Version 001  
Chandra X-Ray Center

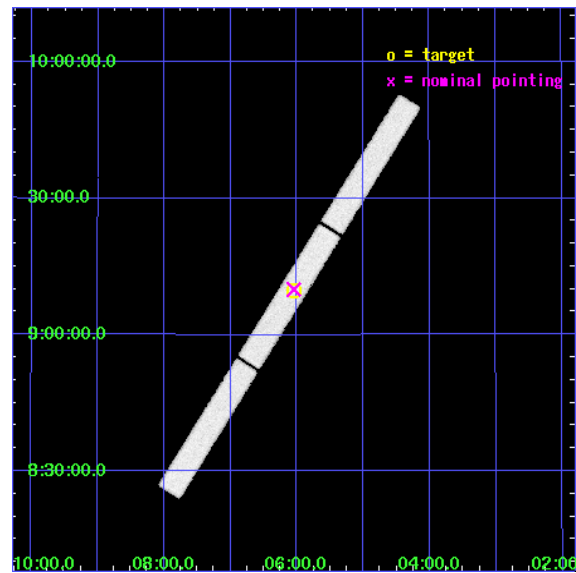
L2 Processing Date : Dec 11 2006

## Contents

<b>1</b>	<b>Front</b>	<b>2</b>
<b>2</b>	<b>OBI</b>	<b>3</b>
2.1	OBI . . . . .	3
2.1.1	Images . . . . .	3
2.1.2	Parameters . . . . .	4
2.1.3	Events . . . . .	4
2.2	Compared Parameters . . . . .	5
2.3	Aspect . . . . .	6
2.4	Star Slots . . . . .	9
2.4.1	Slot 3 . . . . .	9
2.4.2	Slot 4 . . . . .	10
2.4.3	Slot 5 . . . . .	11
2.4.4	Slot 6 . . . . .	12
2.4.5	Slot 7 . . . . .	13
2.5	FID Slots . . . . .	14
2.5.1	Slot 0 . . . . .	14
2.5.2	Slot 1 . . . . .	15
2.5.3	Slot 2 . . . . .	16
<b>3</b>	<b>Gratings</b>	<b>17</b>
3.1	LETG Arm . . . . .	17
<b>A</b>	<b>Summary</b>	<b>19</b>
A.1	Status . . . . .	19
A.2	Comments . . . . .	19

# 1 Front

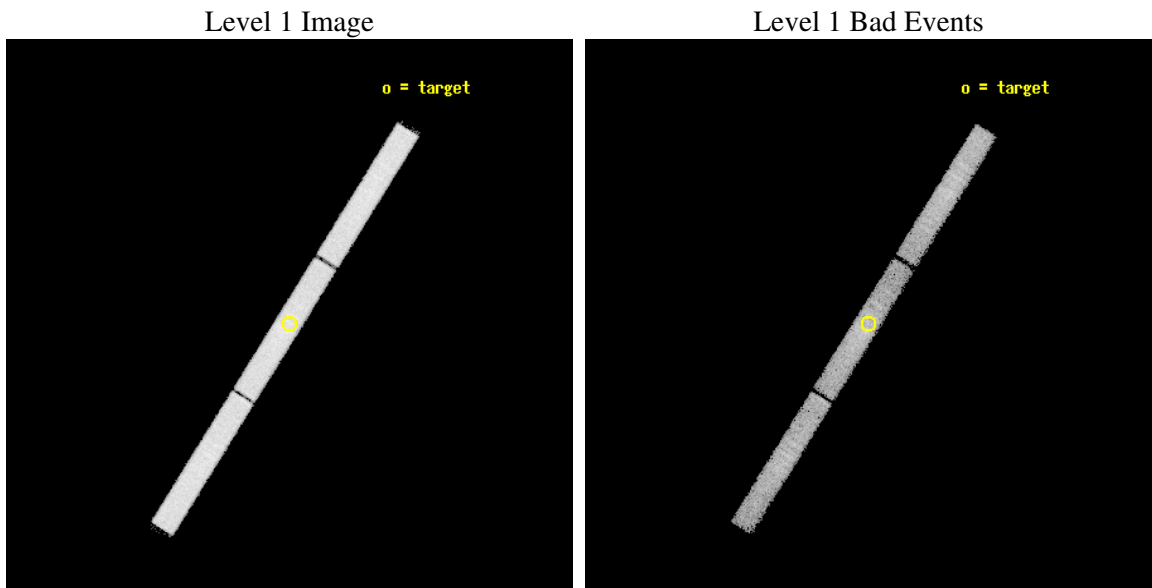
seq_num	100008
obs_id	2475
title	SOLVING THE PUZZLE OF COMETARY X-RAY ORIGIN: OBSERVATIONS OF COMET 10P/TEMPEL 2
observer	DR W. THOMAS VESTRAND
object	LINEAR 2001 A2
ra_targ	346.51336
dec_targ	9.16218
ra_nom	346.51109520882
dec_nom	9.1665205011566
roll_nom	121.94412290659
revision	2
ontime	2394.6563436687
livetime	2378.1791292335
l2events	139623



## 2 OBI

### 2.1 OBI

#### 2.1.1 Images



### 2.1.2 Parameters

obi_num	0
ascdsver	7.6.9
caldbver	3.2.4
date	2006-12-12T00:06:55
revision	2

sched_exp_time	2250.000000
ontime	2438.7313454002
l1events	245905

### 2.1.3 Events

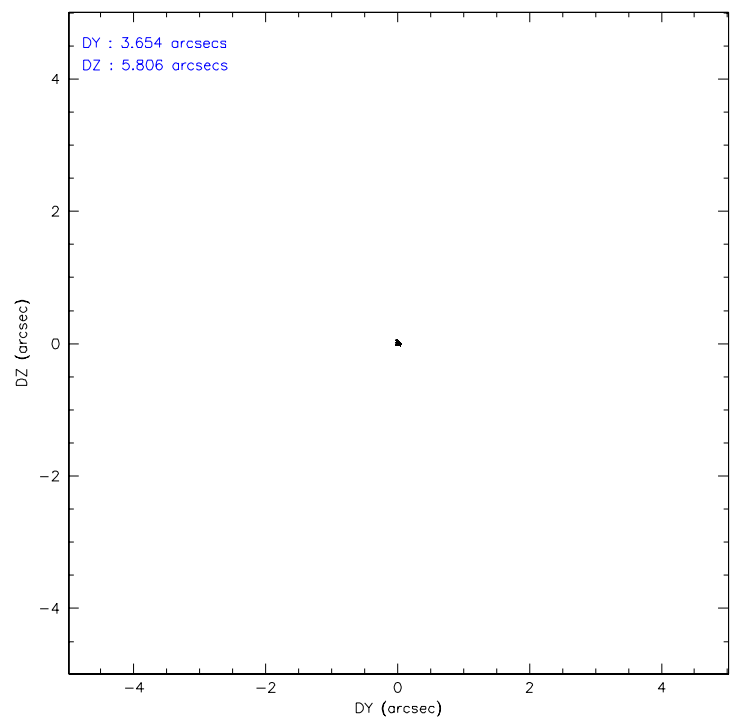
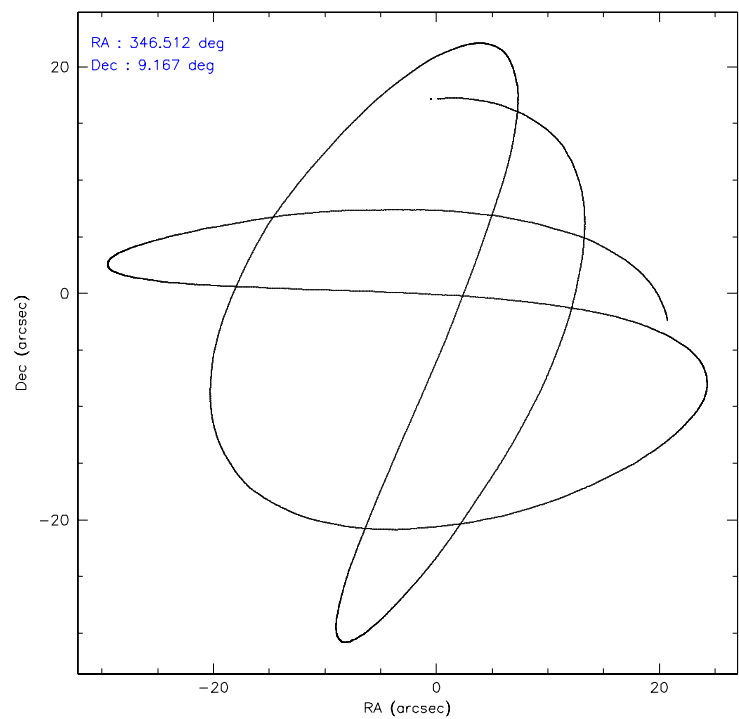
Level 1 Events

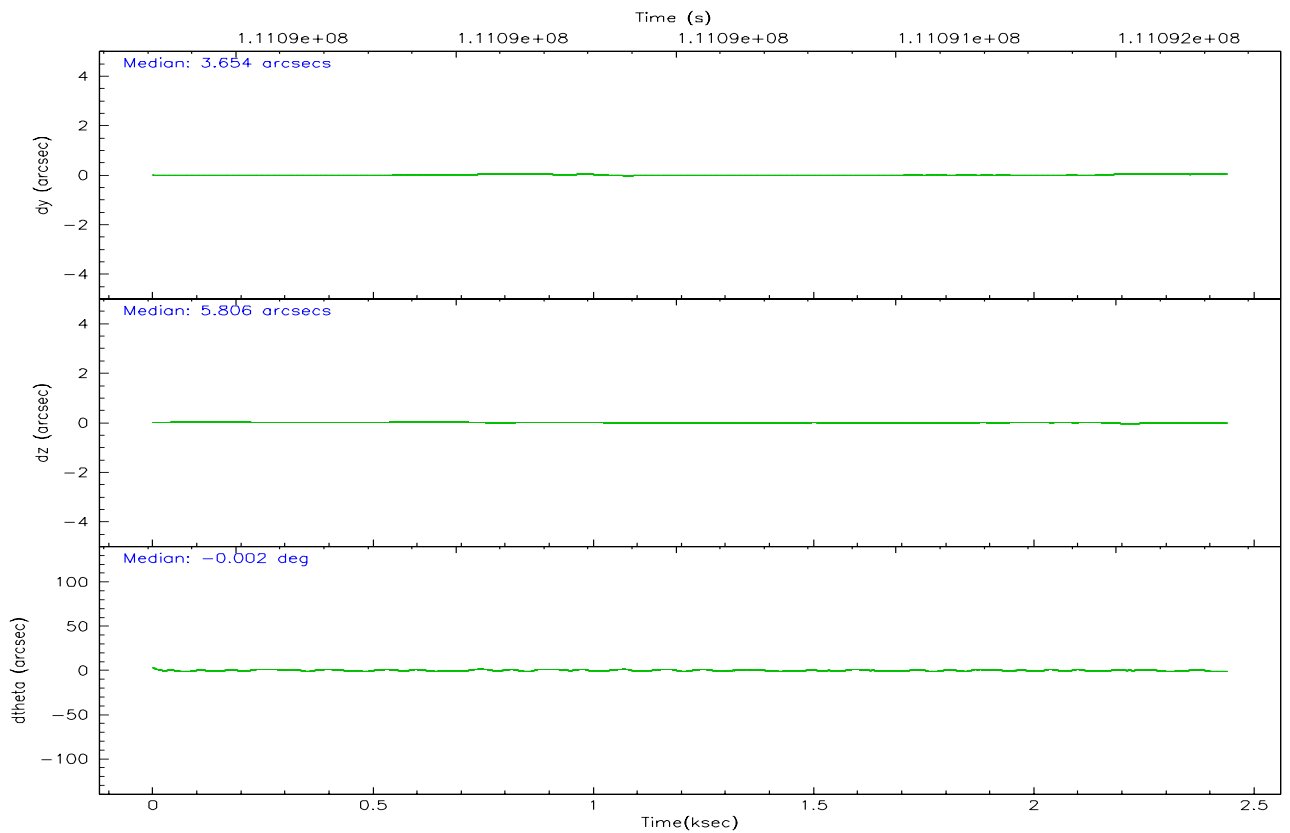
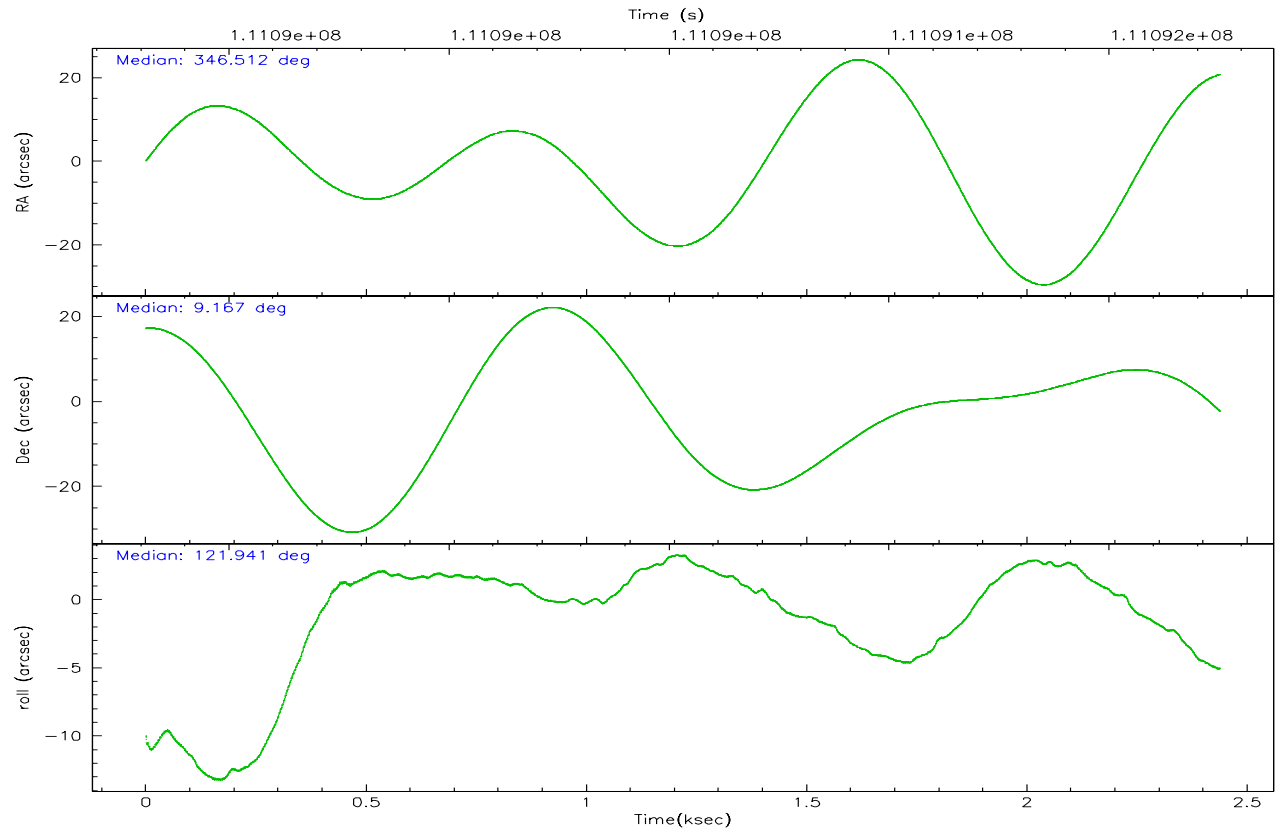
	<b>segment 1</b>	<b>segment 2</b>	<b>segment 3</b>
level 1 events	82488	80490	82927
rejected events	27825	28581	31632
rejected %	33%	35%	38%

## 2.2 Compared Parameters

Parameter	Planned	Actual	Parameter	Planned	Actual
Instrument	HRC	HRC	Obspar format version number	6	6
Detector	HRC-S	HRC-S	Obspar file type	PREDICTED	ACTUAL
Grating	LETG	LETG	Obspar update status	NONE	UPDATED
Data mode	OBSERVING	OBSERVING			
Observation mode	POINTING	POINTING			
Pointing RA	346.537174	346.5110952088197			
Pointing Dec	9.154039	9.166520501156617			
Pointing Roll	121.872619	121.9441229065871			
SIM focus pos (mm)	-1.429586	-1.428180813131781			
SIM defocus (mm)	0.1037507710433287	0.1051558262725154			
SIM translation stage pos (mm)	250.455976	250.466033080201			
SIM translation stage offset (mm)	0	-0.01005468664627074			
Observation start time	111089501.184000	111089091.34873			
Observation start date	2001-07-09T18:10:37	2001-07-09T18:04:51			
Observation end time	111091751.184000	111091884.98634			
Observation end date	2001-07-09T18:48:07	2001-07-09T18:51:24			

## 2.3 Aspect





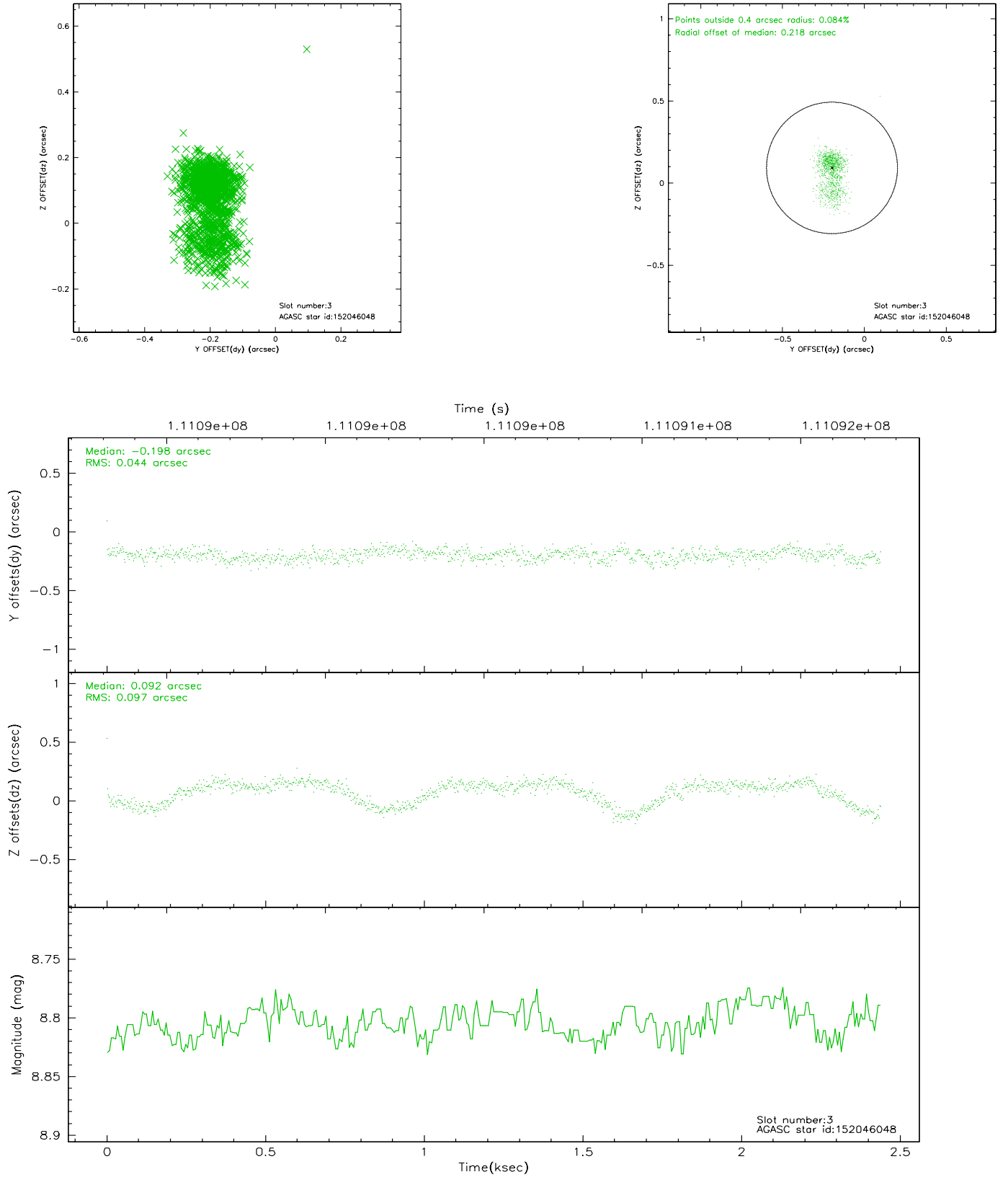
### Slot Statistics

slot	status	id	mag	n_pts	med_dy	med_dz	dr1	dr2	ra	dec	mean_y	mean_z
0	FID	HRC-S-1	6.98	595	0.167	-0.154	0.006	0.010	0.000000	0.000000	-1157.70	-454.33
1	FID	HRC-S-2	6.98	595	0.076	-0.093	0.005	0.009	0.000000	0.000000	1239.94	-447.73
2	FID	HRC-S-3	7.00	595	0.147	-0.055	0.006	0.011	0.000000	0.000000	-1158.33	574.55
3	GUIDE	152046048	8.81	1191	-0.198	0.092	0.100	0.204	346.265854	9.604114	1885.43	-36.05
4	GUIDE	152048440	8.51	1191	0.048	-0.079	0.064	0.101	346.200519	9.070077	378.11	1177.24
5	GUIDE	152056984	8.46	1191	0.188	0.253	0.077	0.128	347.141022	9.108410	-1269.99	-1734.18
6	GUIDE	152050776	9.14	1191	-0.052	-0.115	0.075	0.128	346.189473	9.345260	1236.97	685.25
7	GUIDE	152056136	6.63	1190	0.018	-0.123	0.055	0.084	346.466795	8.896005	-654.84	705.18

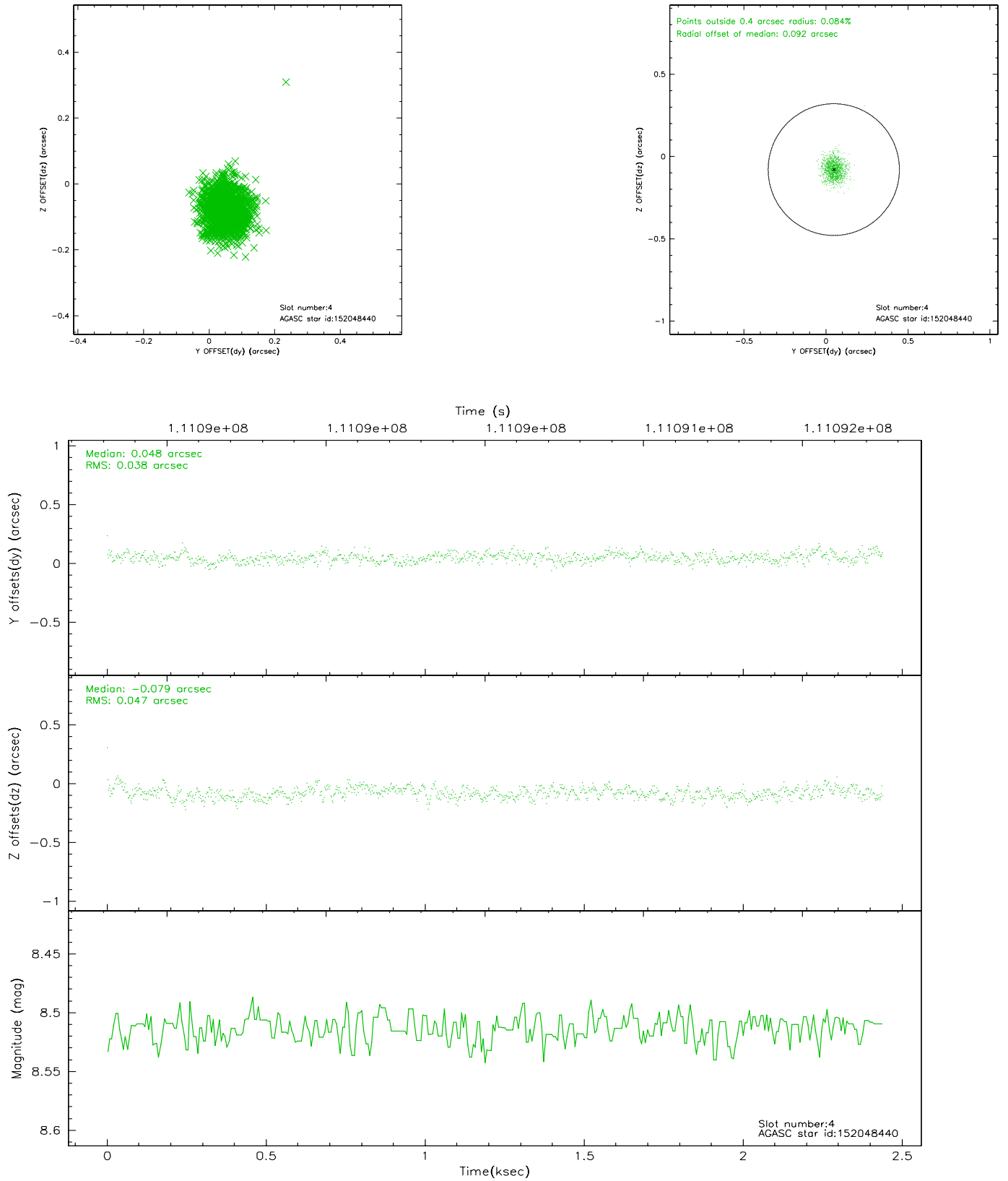


## 2.4 Star Slots

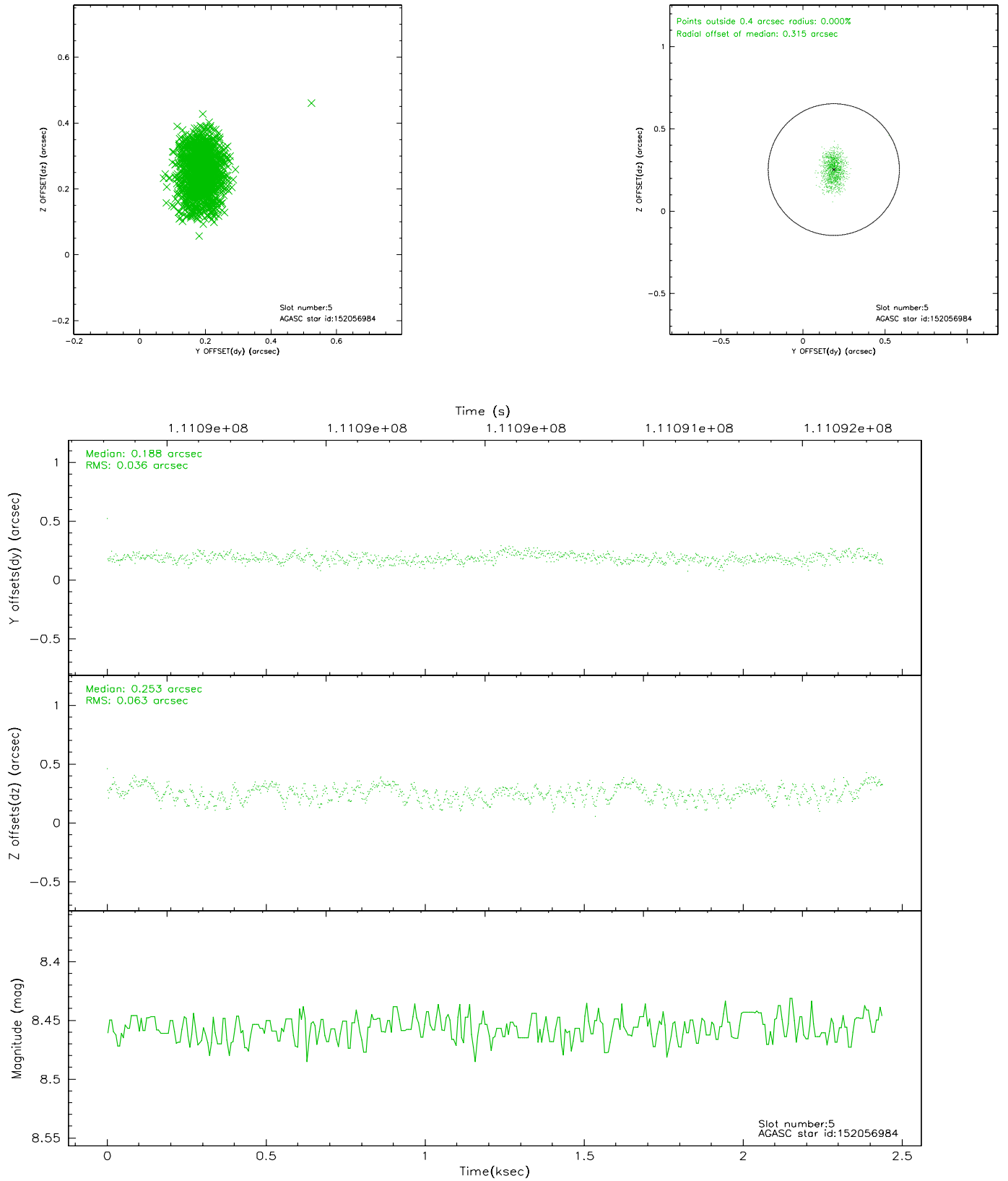
### 2.4.1 Slot 3



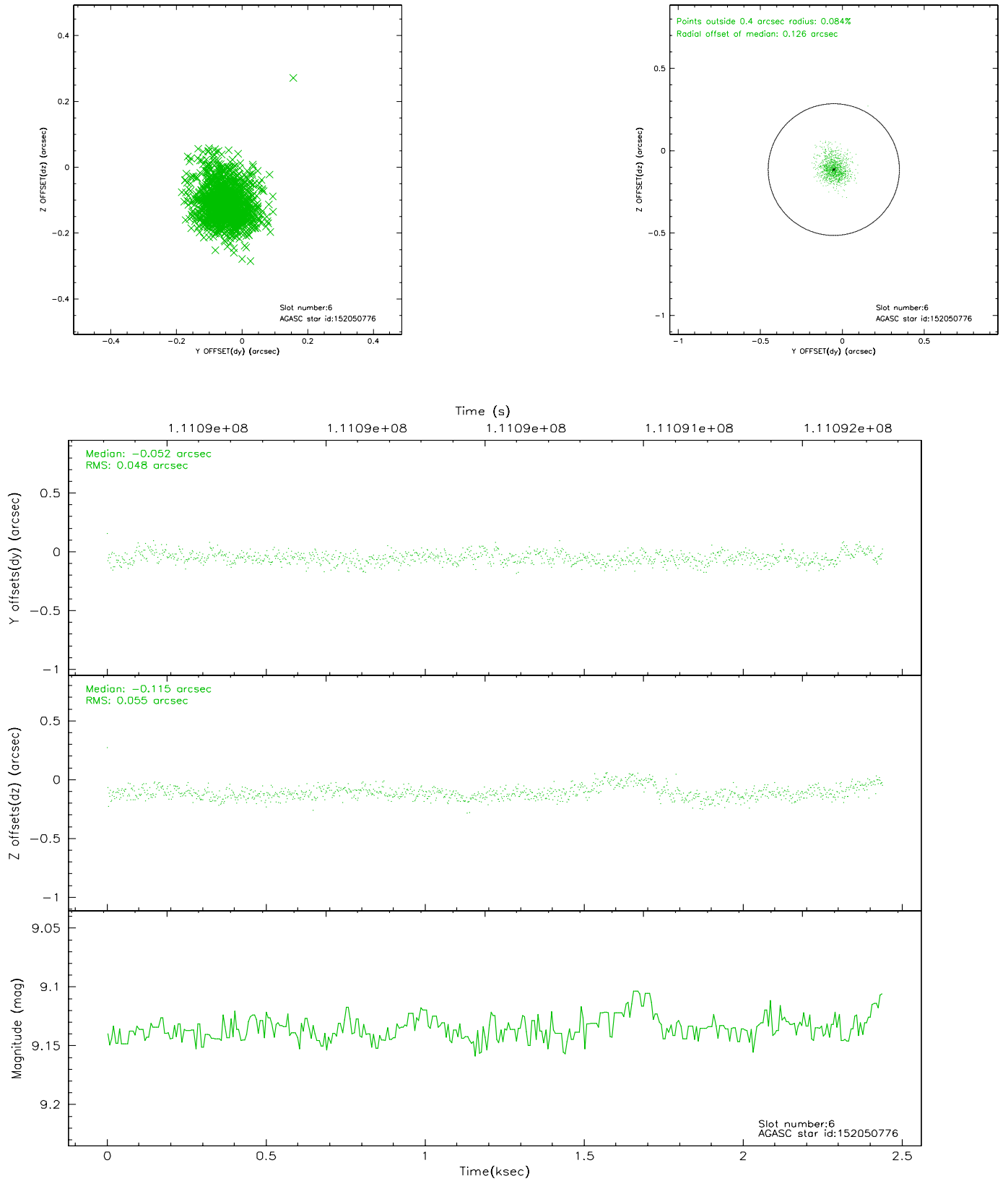
## 2.4.2 Slot 4



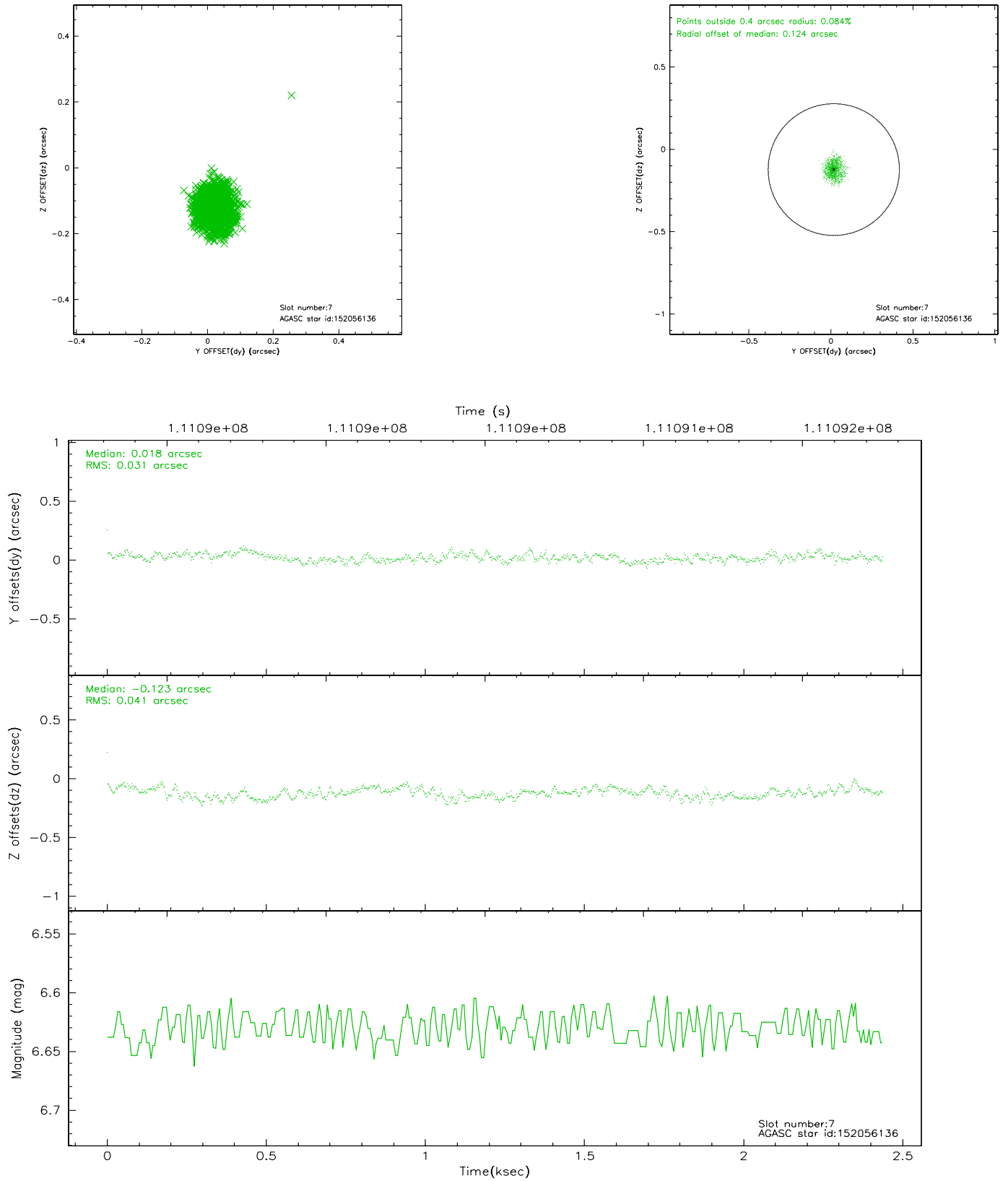
### 2.4.3 Slot 5



## 2.4.4 Slot 6

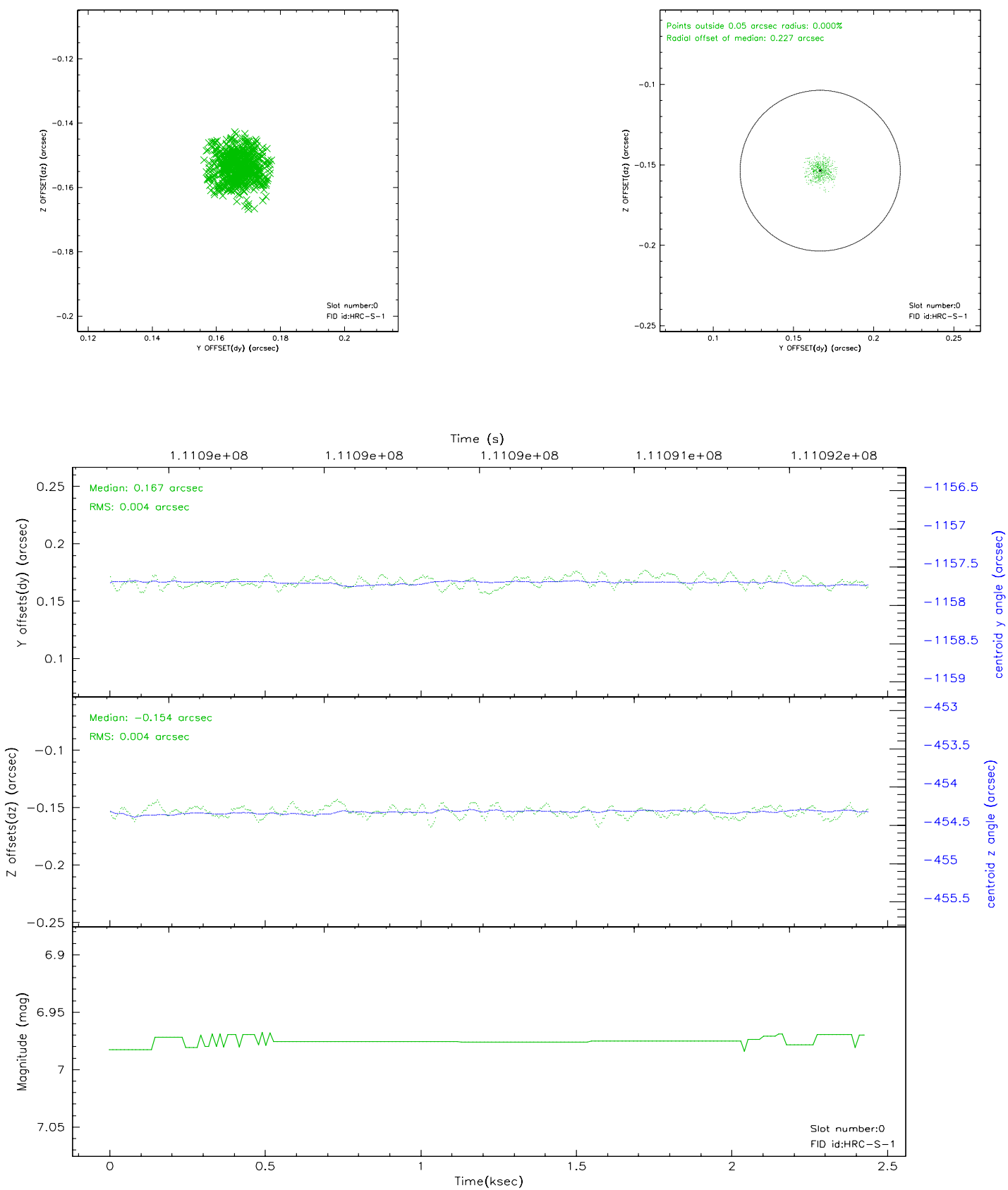


## 2.4.5 Slot 7

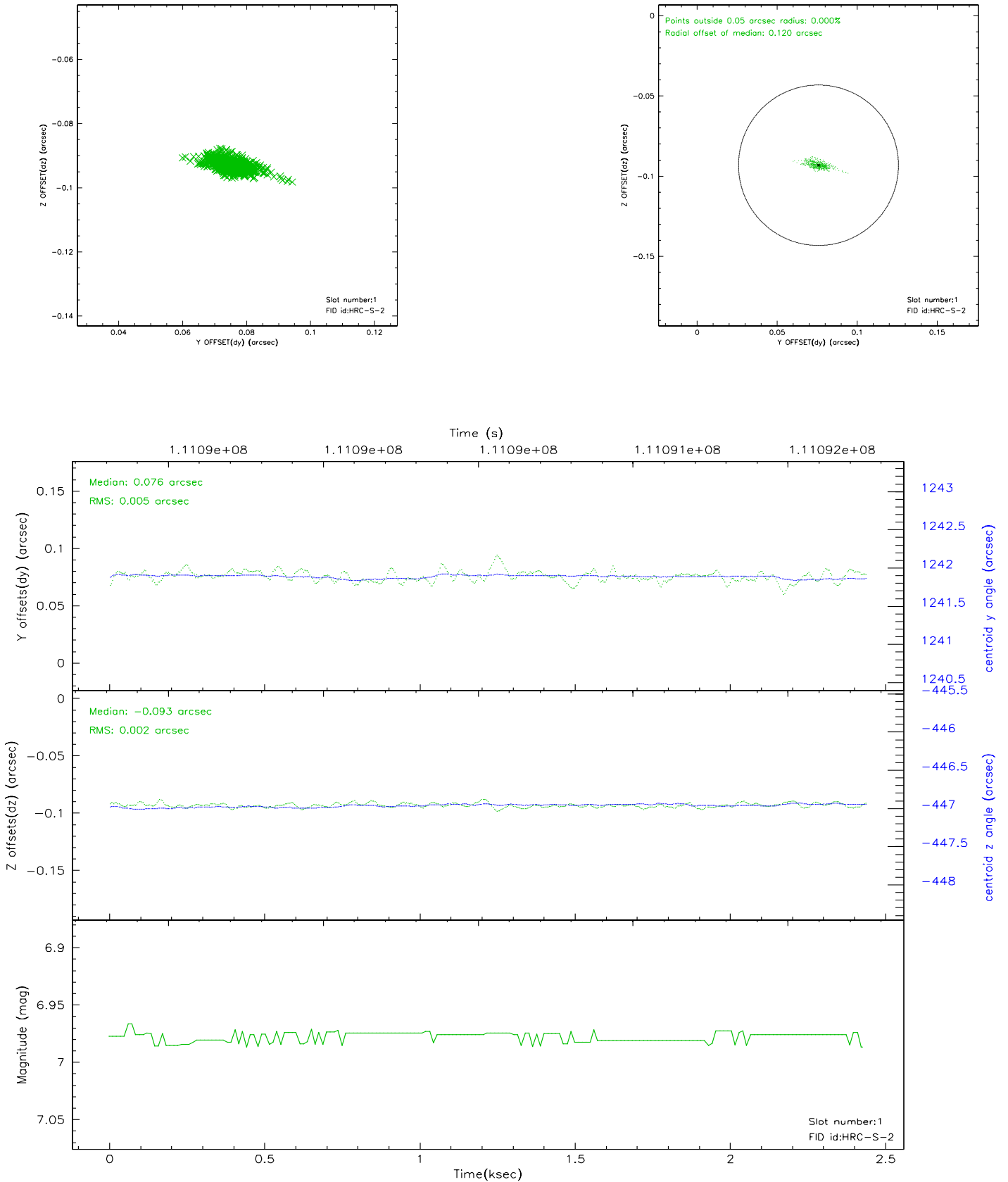


## 2.5 FID Slots

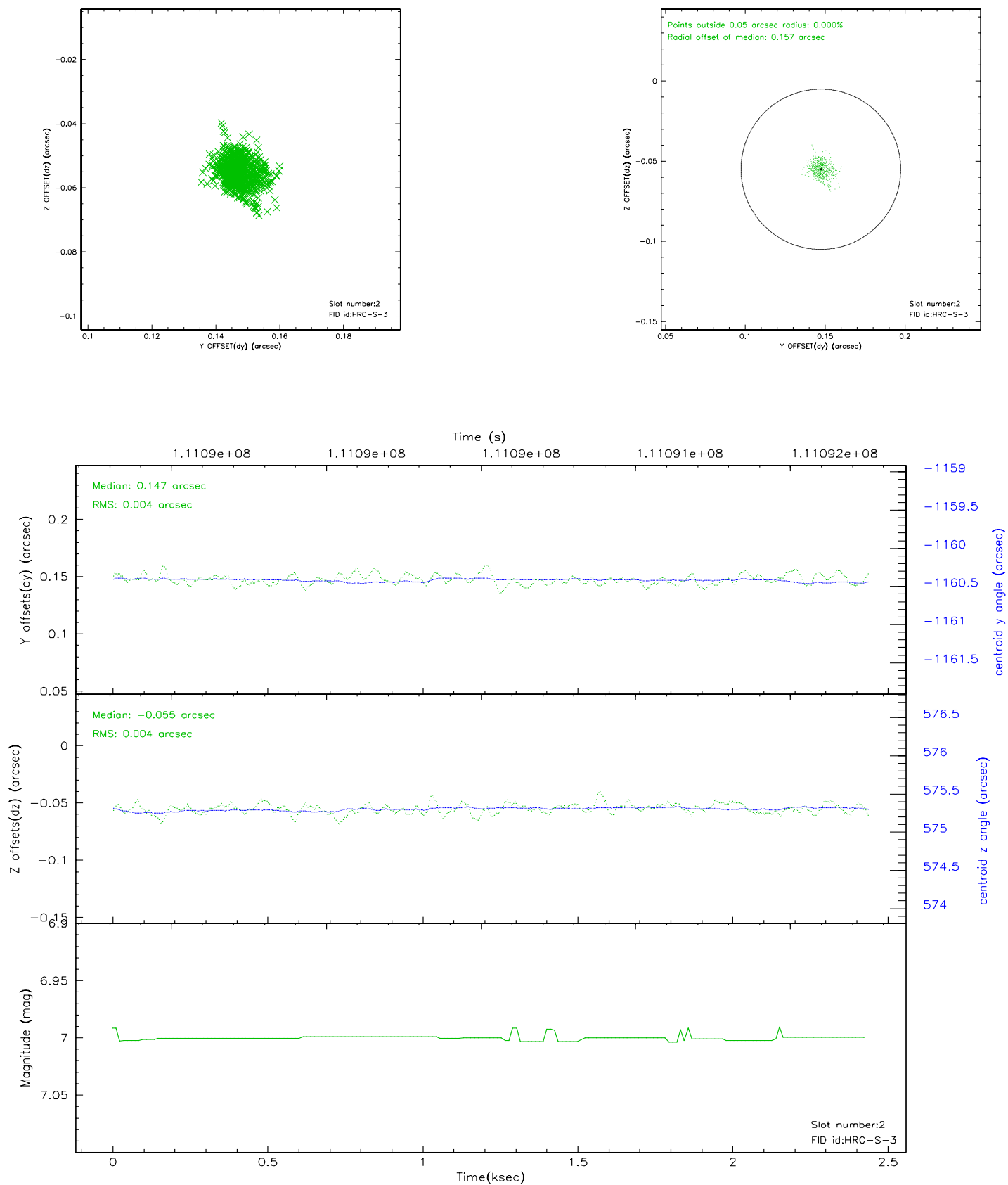
### 2.5.1 Slot 0



## 2.5.2 Slot 1



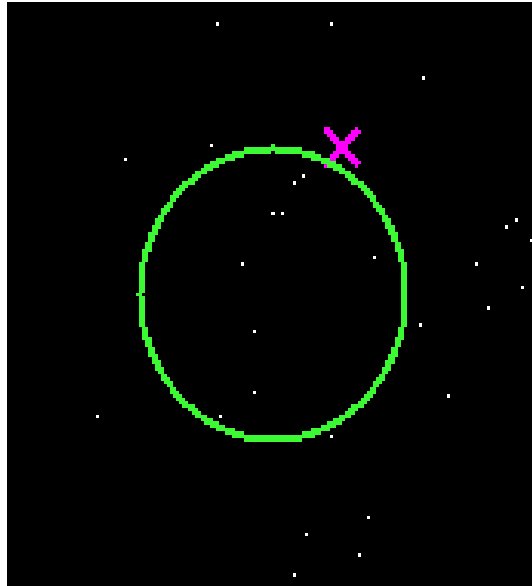
### 2.5.3 Slot 2



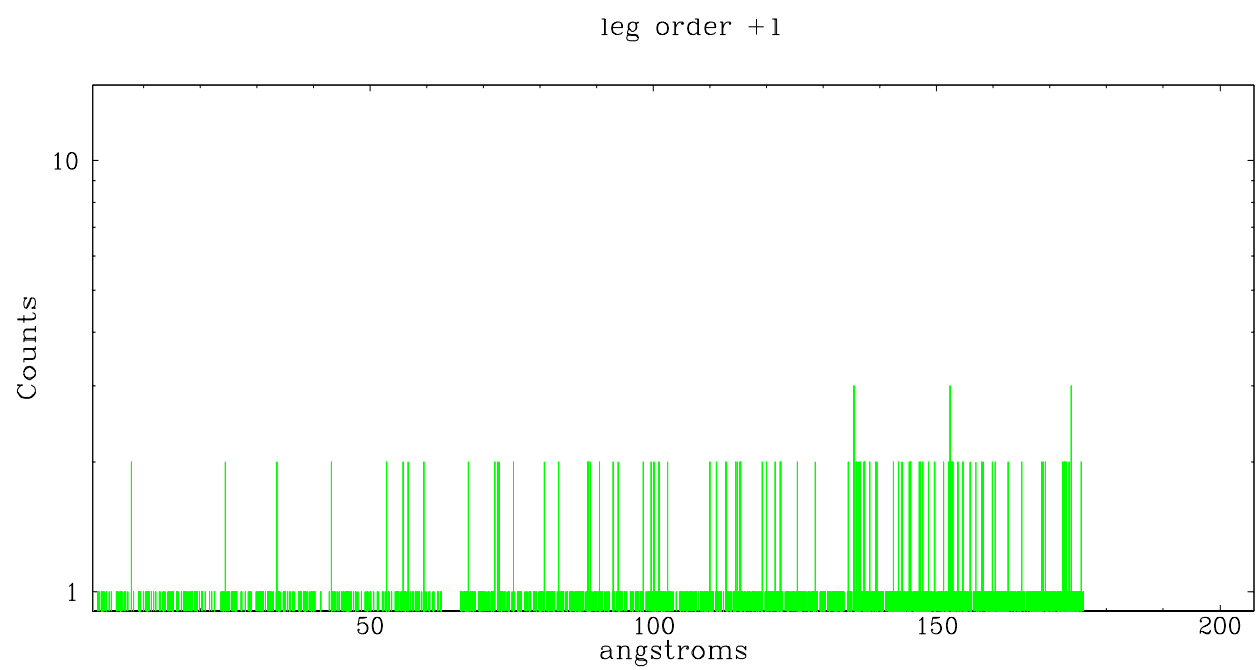
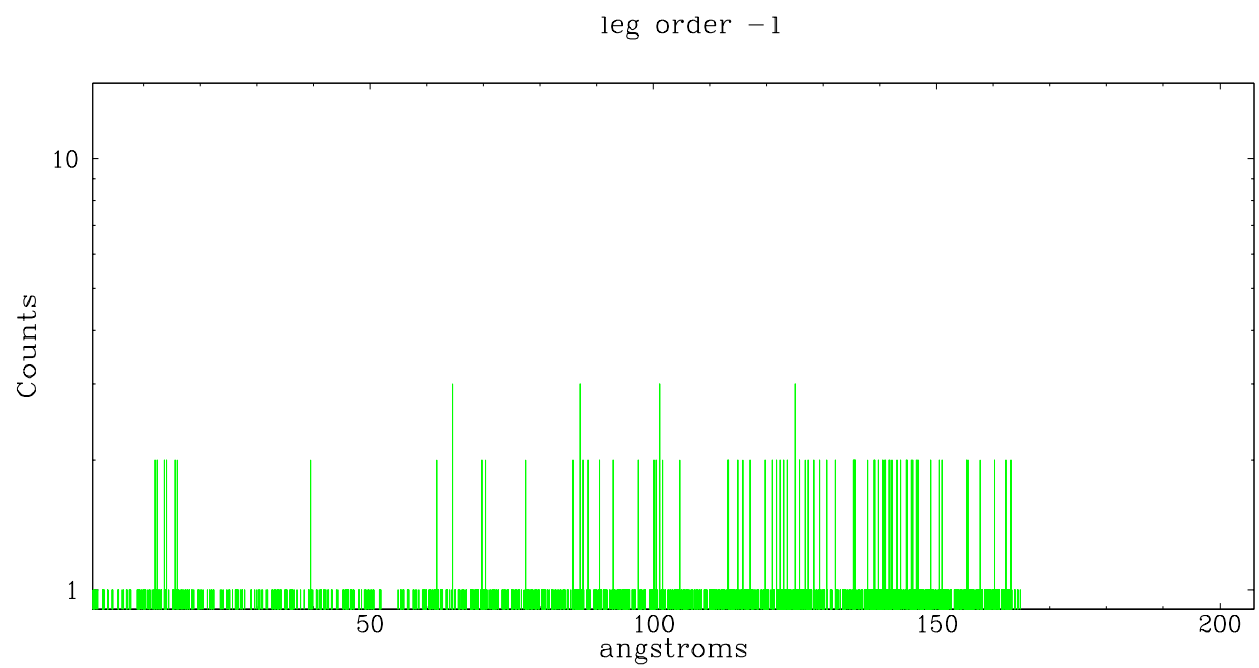


## 3 Gratings

### 3.1 LETG Arm



LETG Zero Order



# A Summary

## A.1 Status

V&V Scientist	Jen Lauer
V&V Date (YYYY-MM-DD)	2006.12.15
V&V Edition	1
V&V Disposition and Status	OK
V&V Charge Time	2.438

## A.2 Comments

Monitor constraint met.

Tgdetect found no sources, 0th order position defaulted to ra\_targ, dec\_targ.

Users should run sso\_freeze or the equivalent on the suite of comet observations before rerunning tgdetect.