

# V&V Reference Report

## L2 ASCDS Version : 7.6.9

Observation 2473 - L2 Version 001  
Chandra X-Ray Center

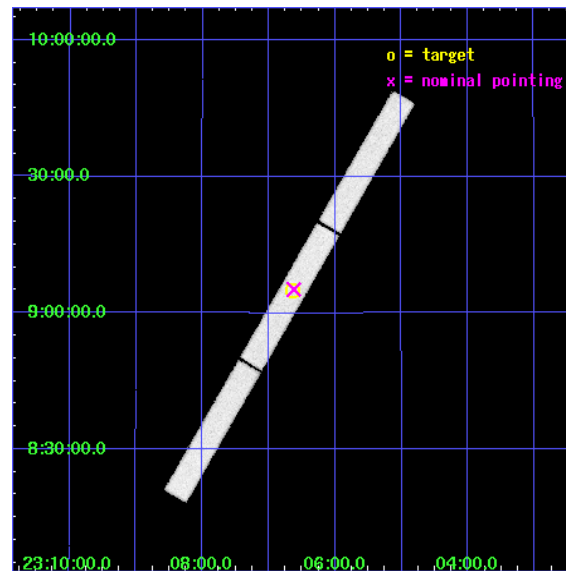
L2 Processing Date : Dec 11 2006

## Contents

<b>1</b>	<b>Front</b>	<b>2</b>
<b>2</b>	<b>OBI</b>	<b>3</b>
2.1	OBI . . . . .	3
2.1.1	Images . . . . .	3
2.1.2	Parameters . . . . .	4
2.1.3	Events . . . . .	4
2.2	Compared Parameters . . . . .	5
2.3	Aspect . . . . .	6
2.4	Star Slots . . . . .	9
2.4.1	Slot 3 . . . . .	9
2.4.2	Slot 4 . . . . .	10
2.4.3	Slot 5 . . . . .	11
2.4.4	Slot 6 . . . . .	12
2.4.5	Slot 7 . . . . .	13
2.5	FID Slots . . . . .	14
2.5.1	Slot 0 . . . . .	14
2.5.2	Slot 1 . . . . .	15
2.5.3	Slot 2 . . . . .	16
<b>3</b>	<b>Gratings</b>	<b>17</b>
3.1	LETG Arm . . . . .	17
<b>A</b>	<b>Summary</b>	<b>19</b>
A.1	Status . . . . .	19
A.2	Comments . . . . .	19

# 1 Front

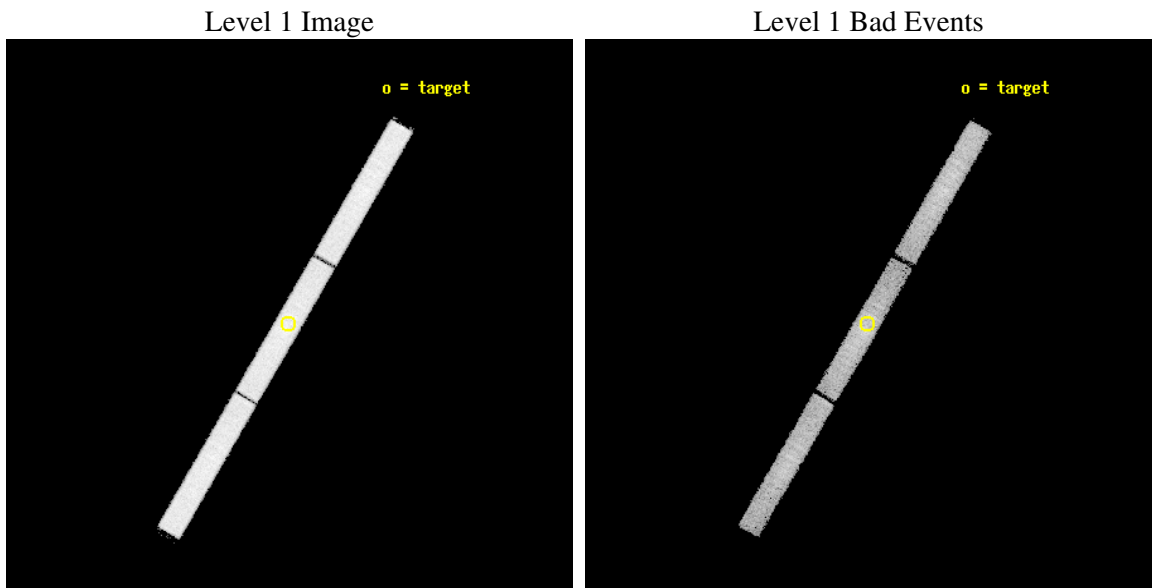
seq_num	100008
obs_id	2473
title	SOLVING THE PUZZLE OF COMETARY X-RAY ORIGIN: OBSERVATIONS OF COMET 10P/TEMPEL 2
observer	DR W. THOMAS VESTRAND
object	LINEAR 2001 A2
ra_targ	346.65802
dec_targ	9.08221
ra_nom	346.65535919408
dec_nom	9.086741580306
roll_nom	120.09363824383
revision	2
ontime	2392.6063435823
livedtime	2376.0087075808
l2events	141665



## 2 OBI

### 2.1 OBI

#### 2.1.1 Images



### 2.1.2 Parameters

obi_num	0
ascdsver	7.6.9
caldbver	3.2.4
date	2006-12-12T00:00:33
revision	2

sched_exp_time	2250.000000
ontime	2438.4750953764
l1events	244604

### 2.1.3 Events

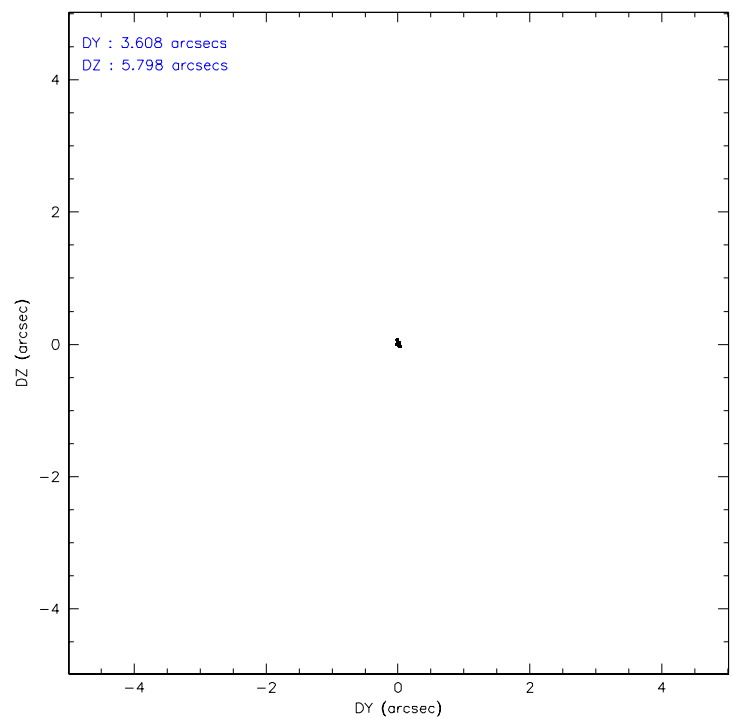
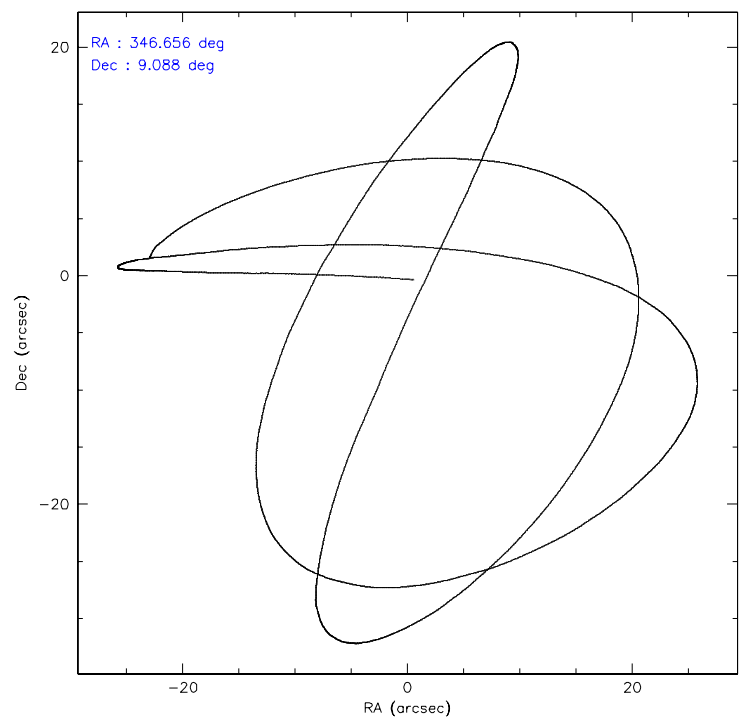
Level 1 Events

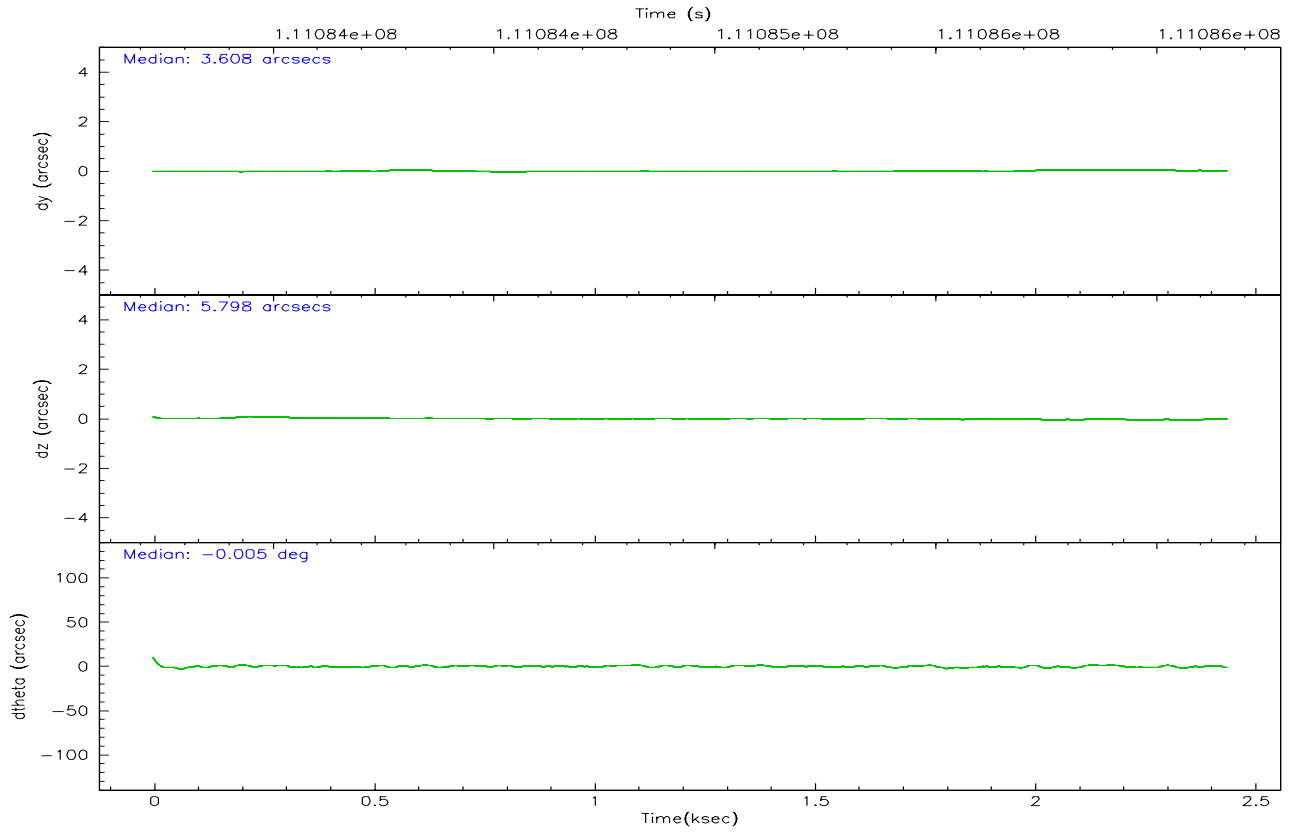
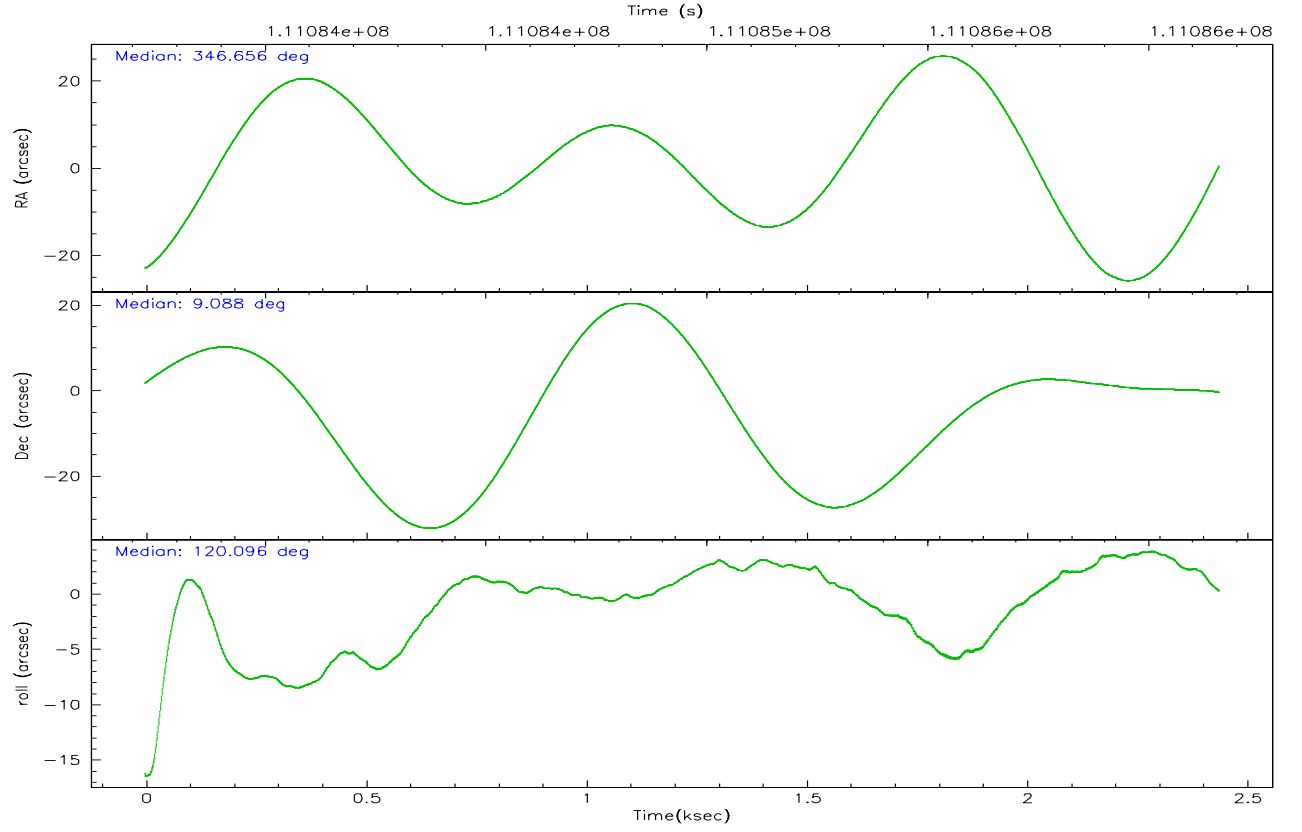
	<b>segment 1</b>	<b>segment 2</b>	<b>segment 3</b>
level 1 events	81942	79703	82959
rejected events	26773	27129	30419
rejected %	32%	34%	36%

## 2.2 Compared Parameters

Parameter	Planned	Actual	Parameter	Planned	Actual
Instrument	HRC	HRC	Obspar format version number	6	6
Detector	HRC-S	HRC-S	Obspar file type	PREDICTED	ACTUAL
Grating	LETG	LETG	Obspar update status	NONE	UPDATED
Data mode	OBSERVING	OBSERVING			
Observation mode	POINTING	POINTING			
Pointing RA	346.681547	346.6553591940848			
Pointing Dec	9.073310	9.086741580306038			
Pointing Roll	120.022164	120.0936382438323			
SIM focus pos (mm)	-1.429586	-1.428180813131781			
SIM defocus (mm)	0.1037507710433287	0.1051558262725154			
SIM translation stage pos (mm)	250.455976	250.466033080201			
SIM translation stage offset (mm)	0	-0.01005468664627074			
Observation start time	111083914.184000	111083538.41102			
Observation start date	2001-07-09T16:37:30	2001-07-09T16:32:18			
Observation end time	111086164.184000	111086297.71112			
Observation end date	2001-07-09T17:15:00	2001-07-09T17:18:17			

## 2.3 Aspect





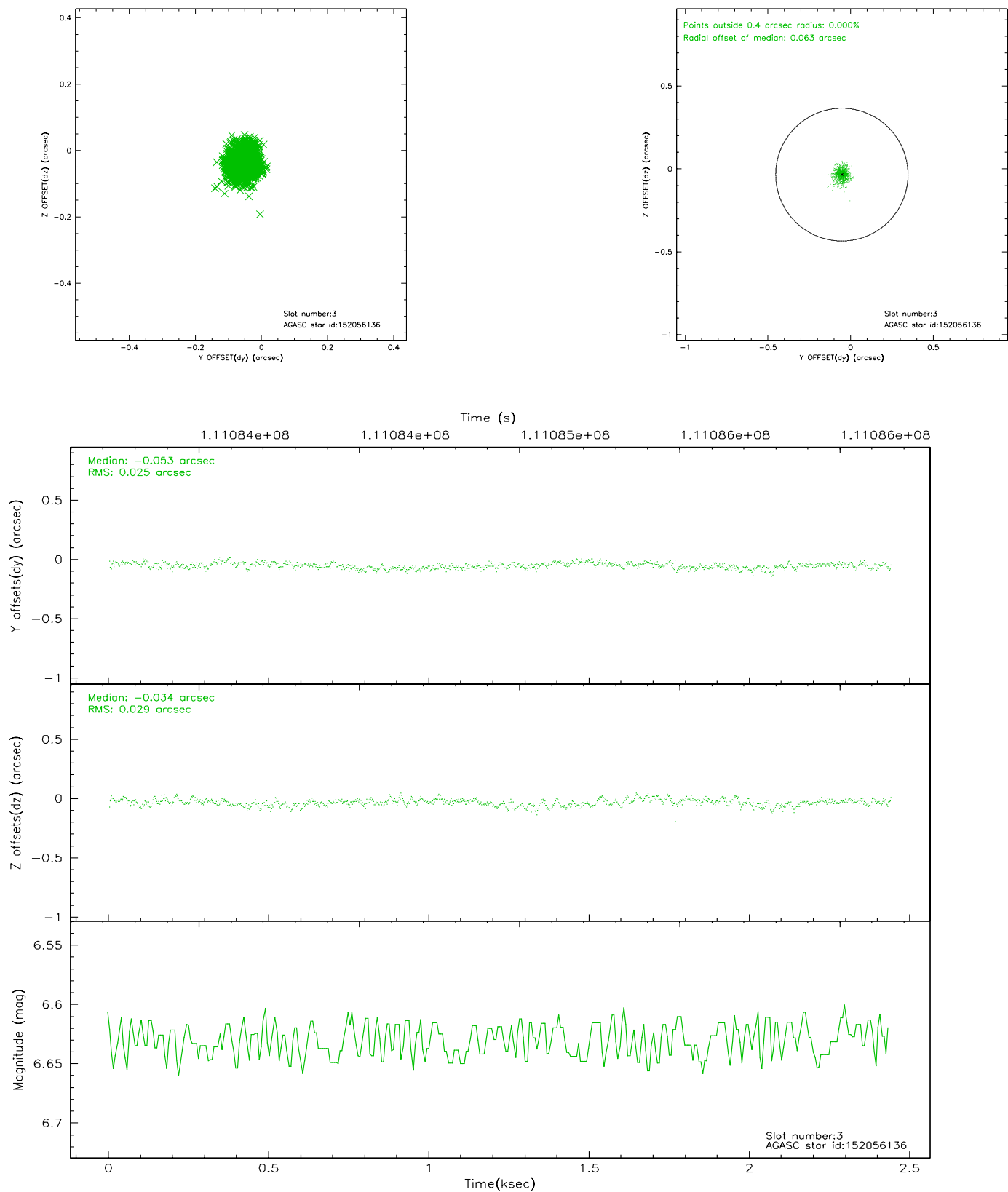
### Slot Statistics

slot	status	id	mag	n_pts	med_dy	med_dz	dr1	dr2	ra	dec	mean_y	mean_z
0	FID	HRC-S-1	6.98	595	0.122	-0.146	0.006	0.010	0.000000	0.000000	-1157.67	-454.39
1	FID	HRC-S-3	7.00	595	0.169	-0.054	0.007	0.011	0.000000	0.000000	-1162.32	574.47
2	FID	HRC-S-4	6.92	595	0.097	-0.097	0.004	0.009	0.000000	0.000000	1238.58	578.81
3	GUIDE	152056136	6.63	1191	-0.053	-0.034	0.040	0.065	346.466795	8.896005	-170.88	980.94
4	GUIDE	152048440	8.52	1191	-0.008	-0.028	0.072	0.116	346.200519	9.070077	845.86	1486.97
5	GUIDE	152050776	9.14	1191	-0.149	-0.014	0.069	0.112	346.189473	9.345260	1723.34	1024.53
6	GUIDE	152046384	9.40	1191	0.002	0.054	0.077	0.134	346.457953	9.242143	924.88	384.88
7	GUIDE	152053000	9.28	1189	0.214	0.023	0.086	0.137	346.794145	8.414960	-2252.20	839.41

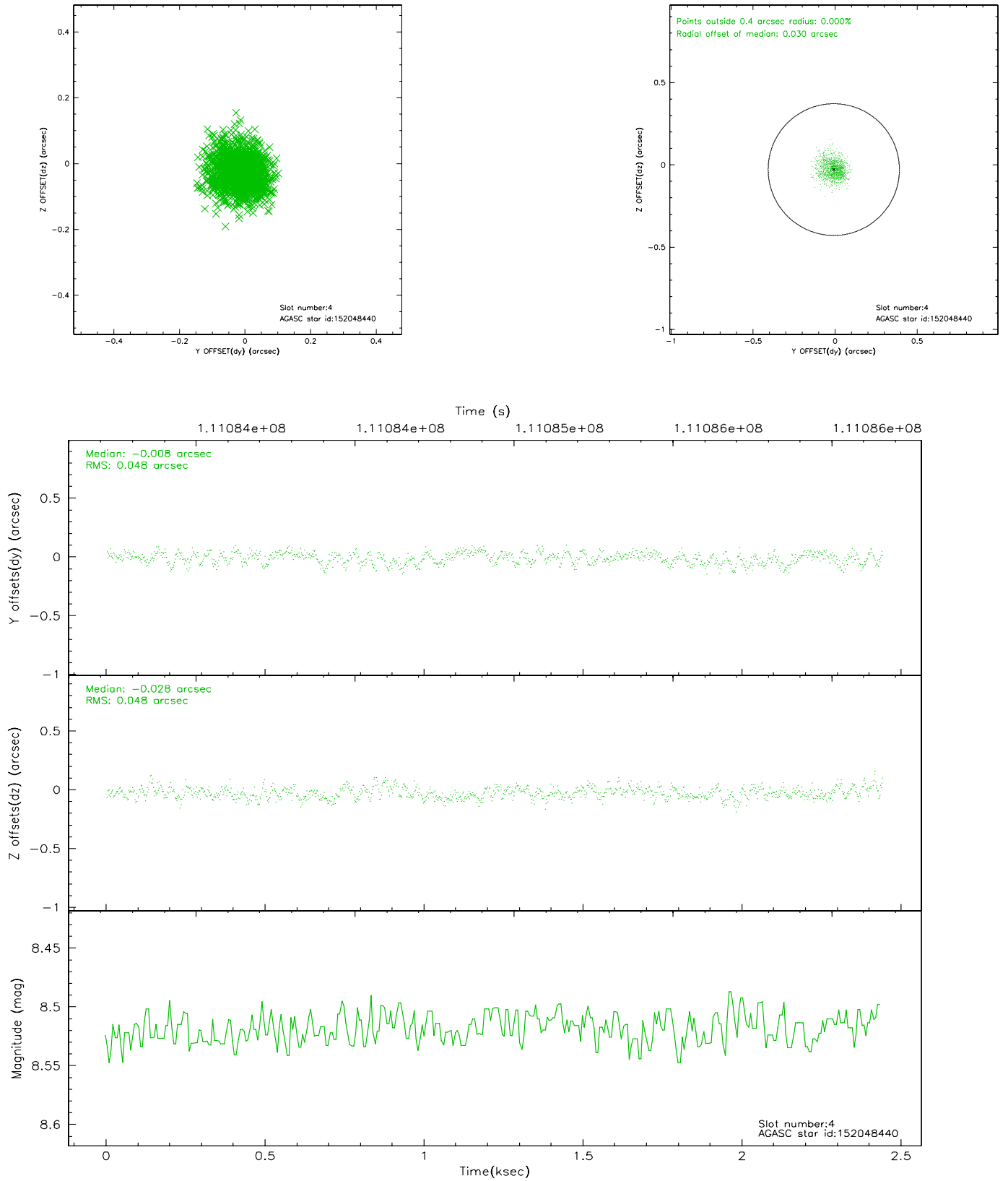


## 2.4 Star Slots

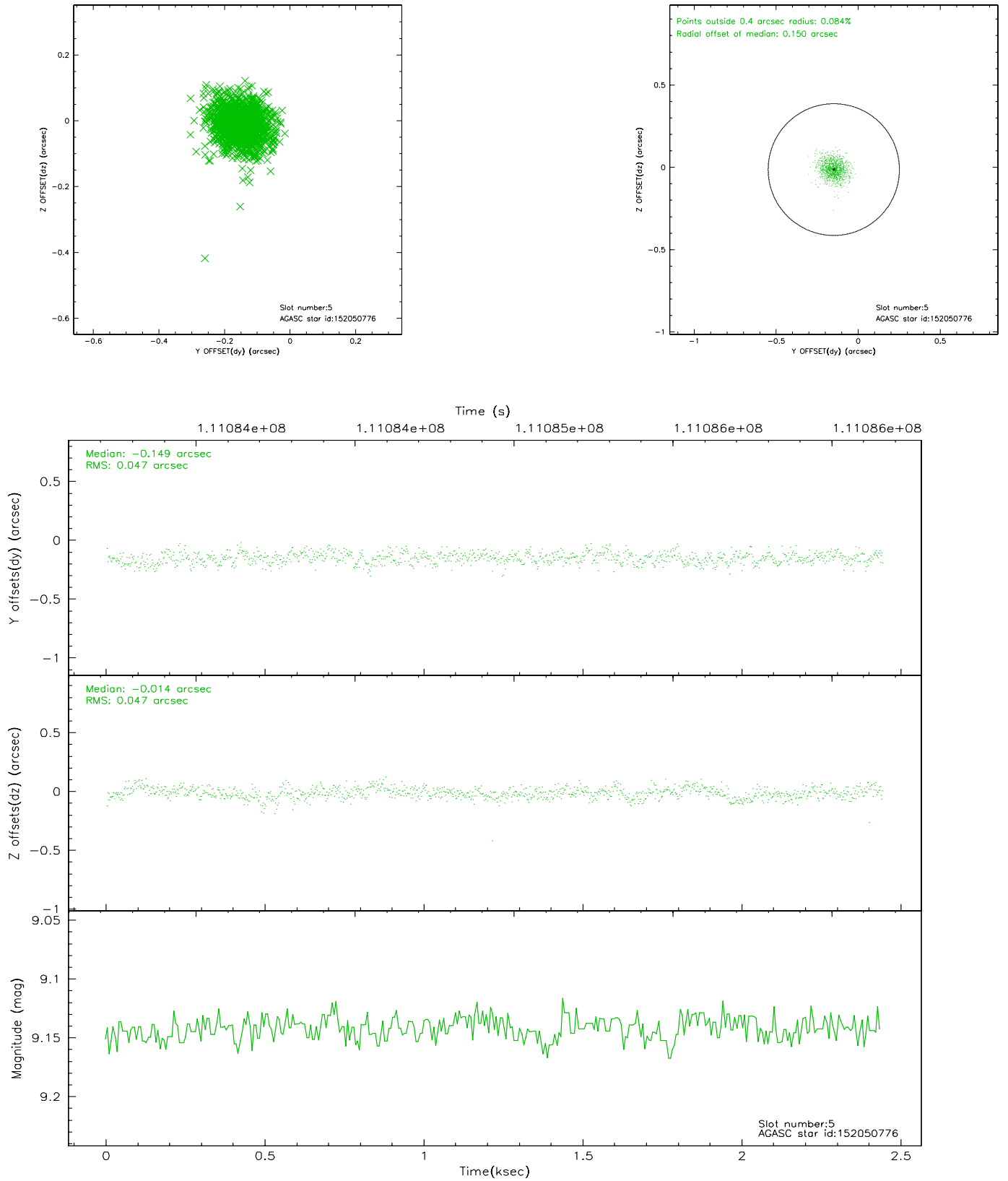
### 2.4.1 Slot 3



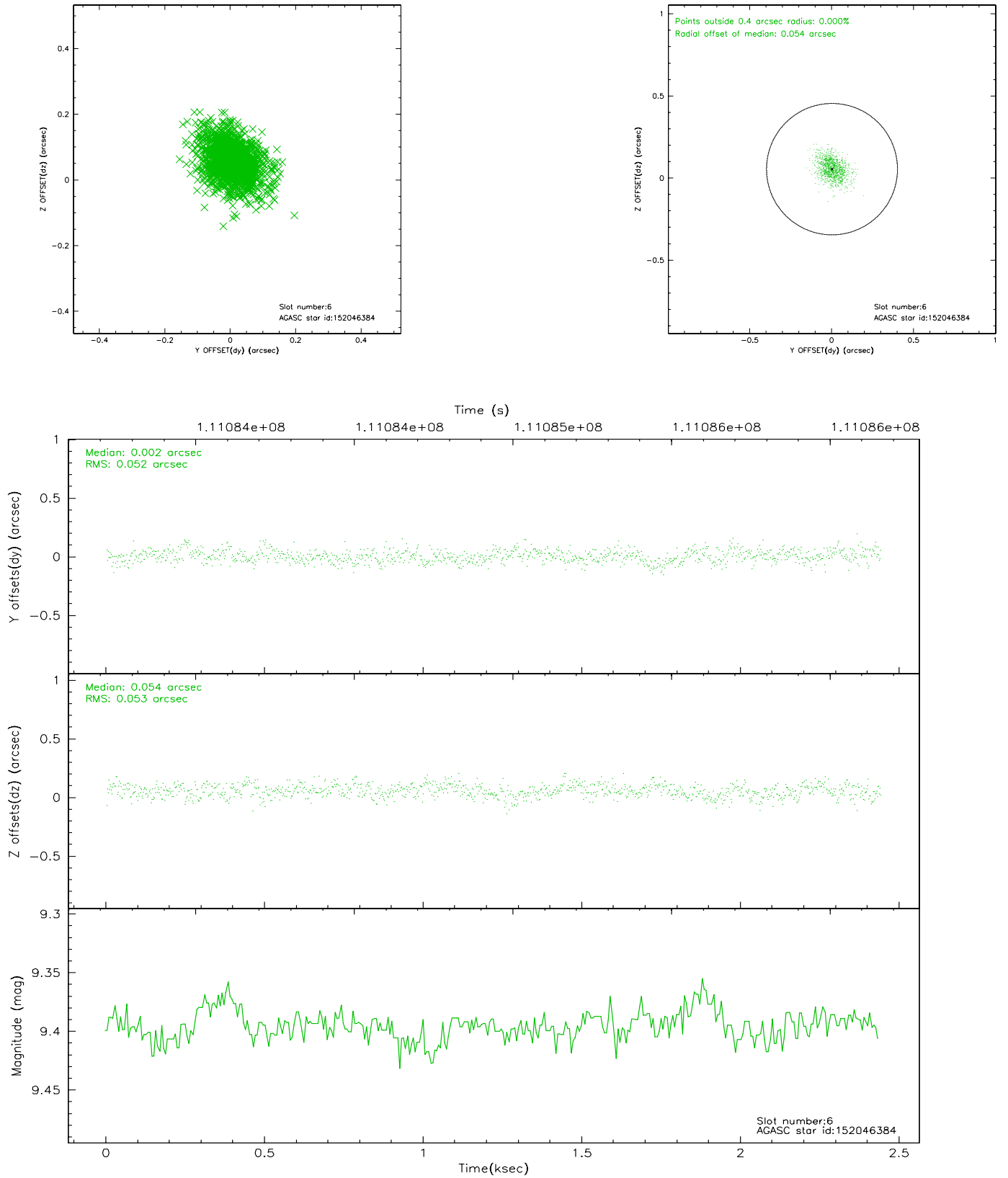
## 2.4.2 Slot 4



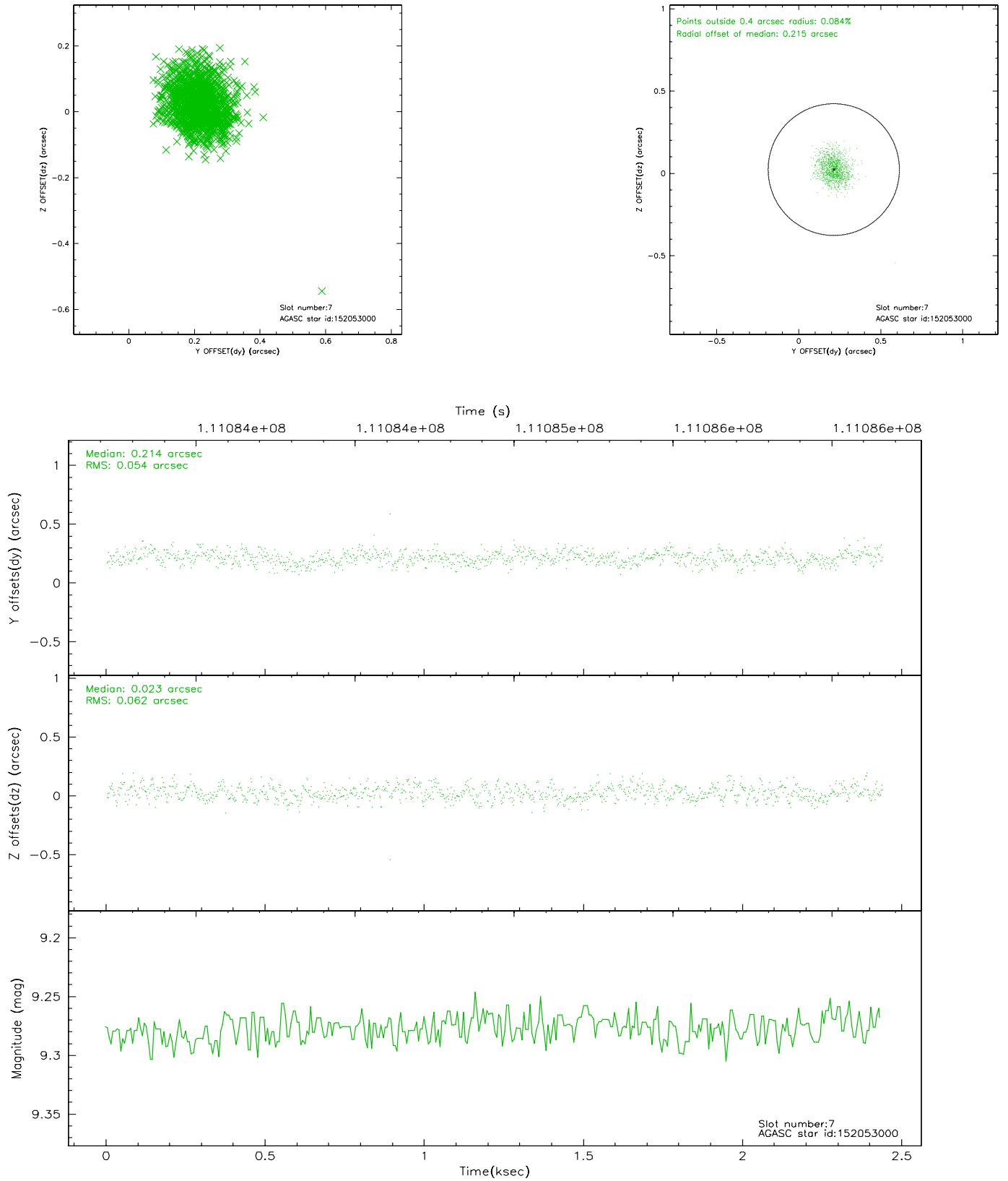
### 2.4.3 Slot 5



## 2.4.4 Slot 6

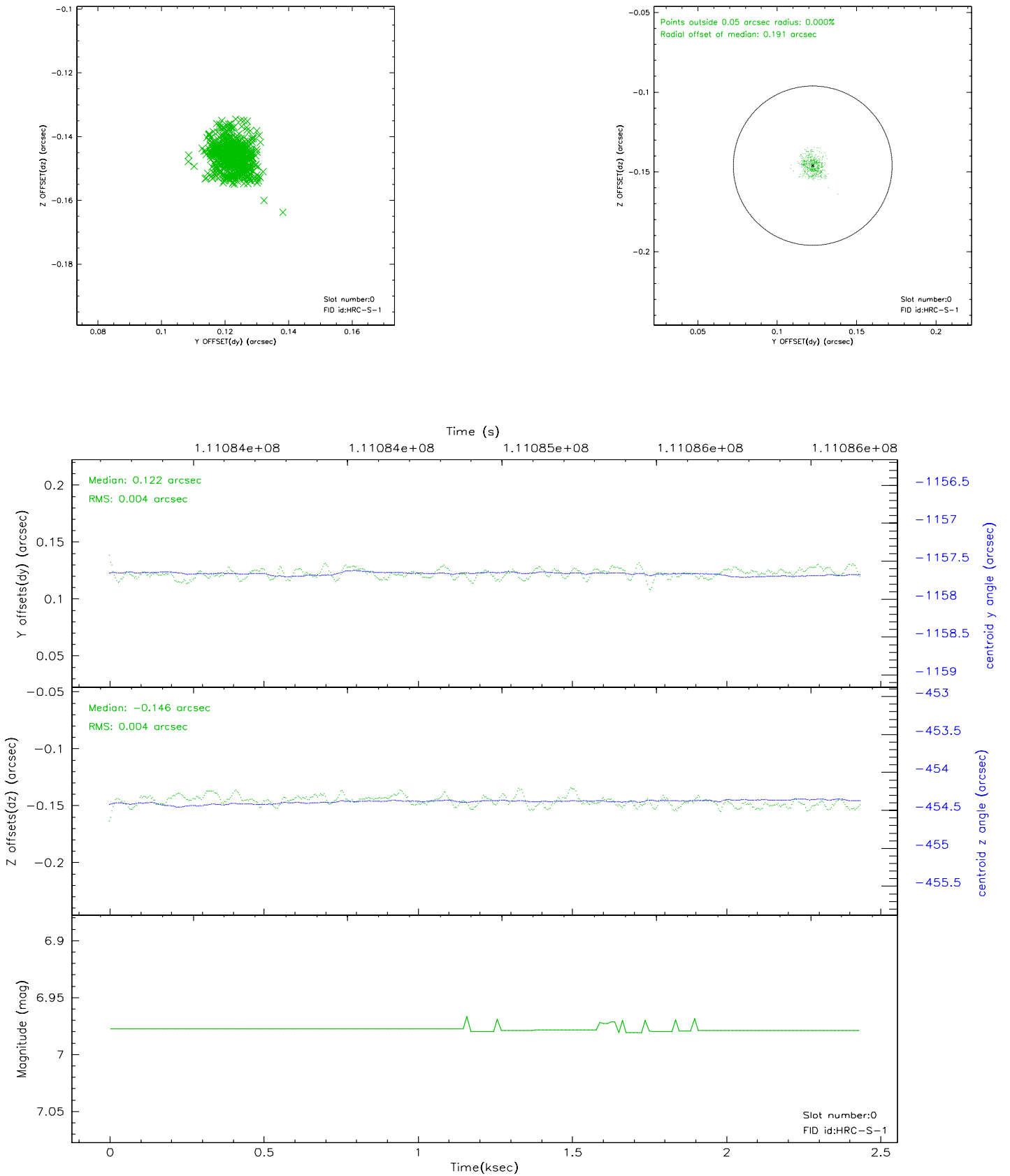


## 2.4.5 Slot 7

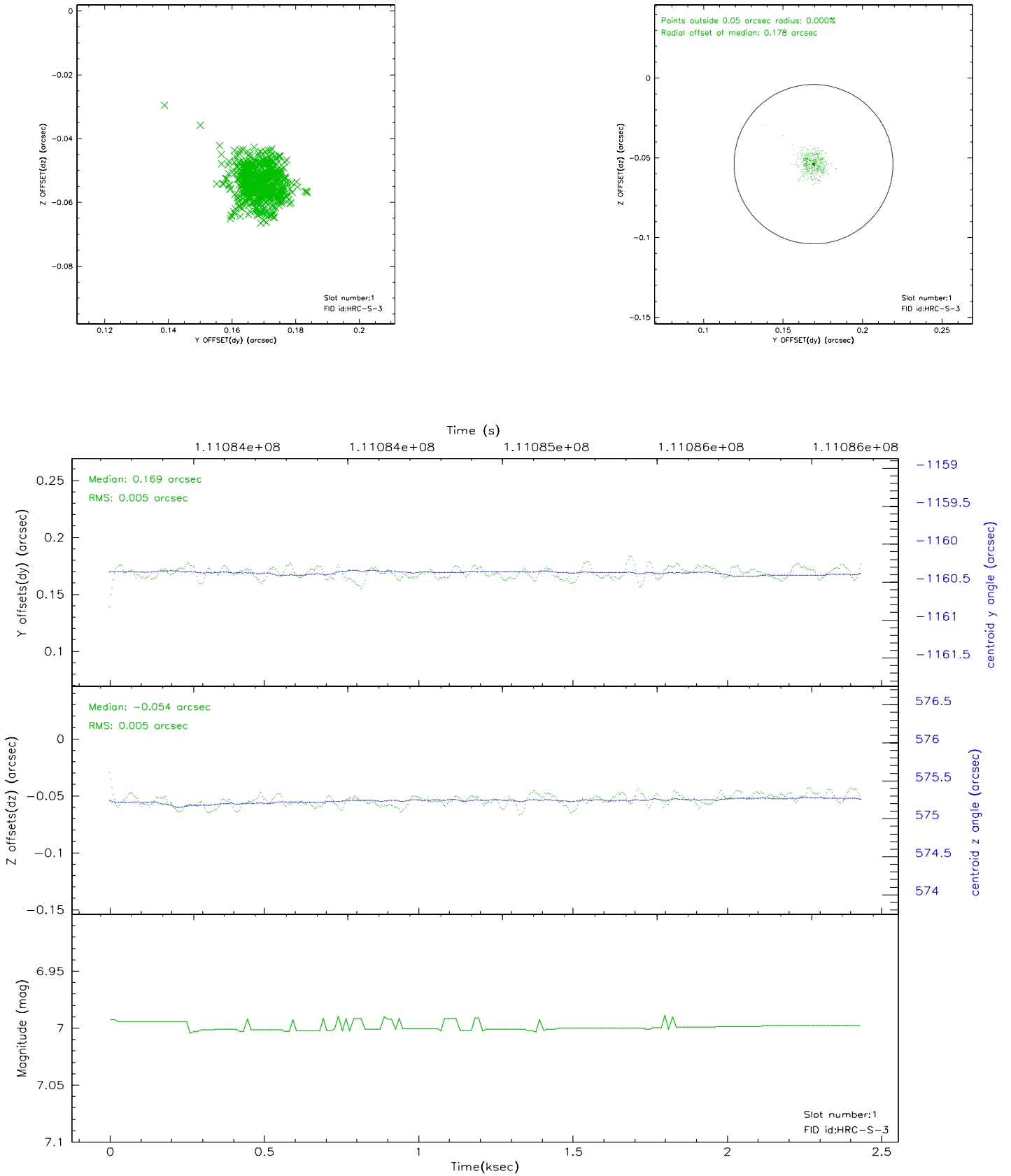


## 2.5 FID Slots

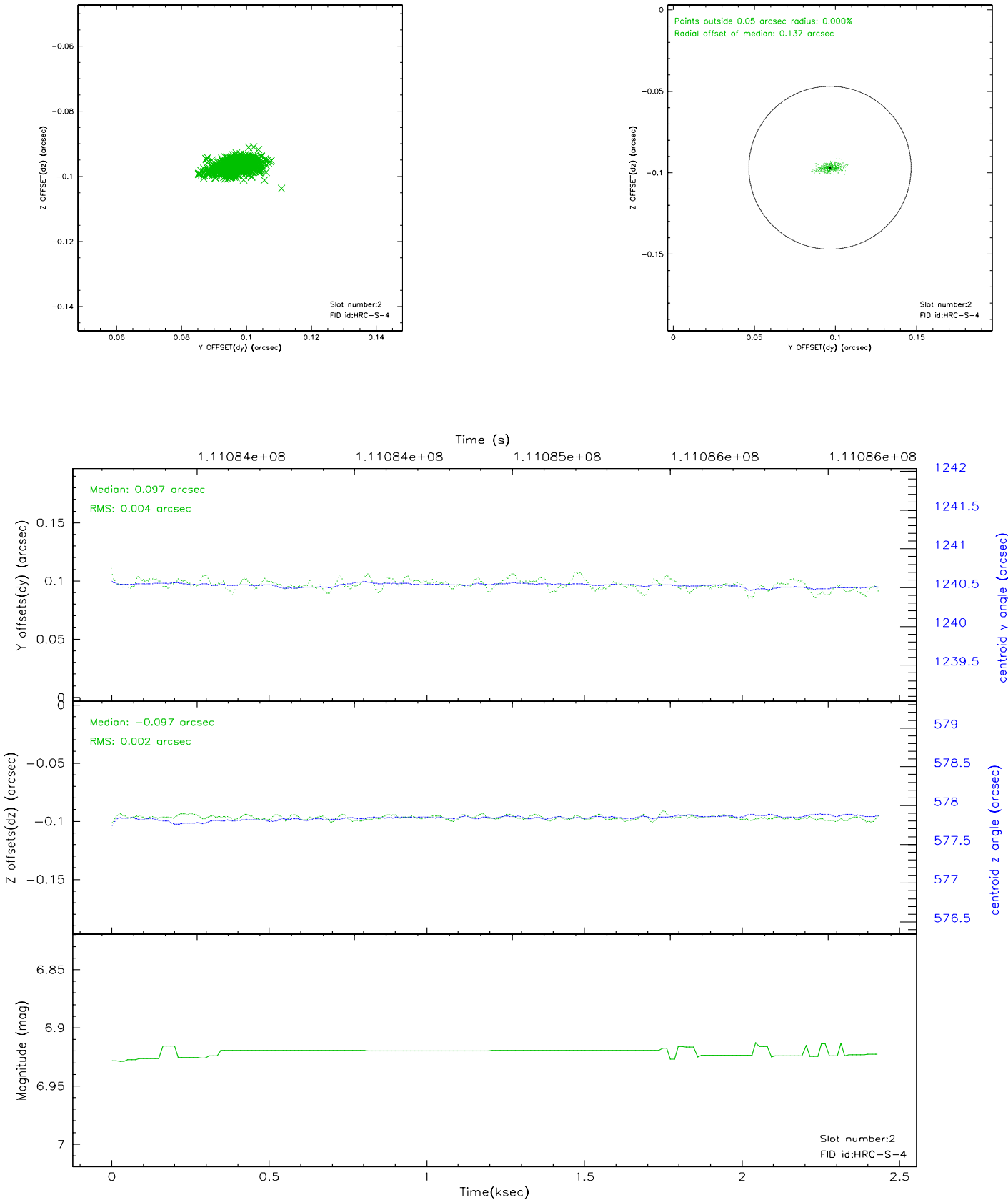
### 2.5.1 Slot 0



## 2.5.2 Slot 1



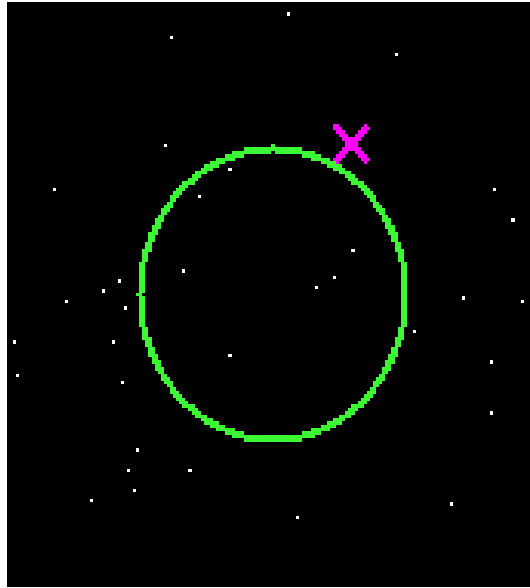
2.5.3 Slot 2



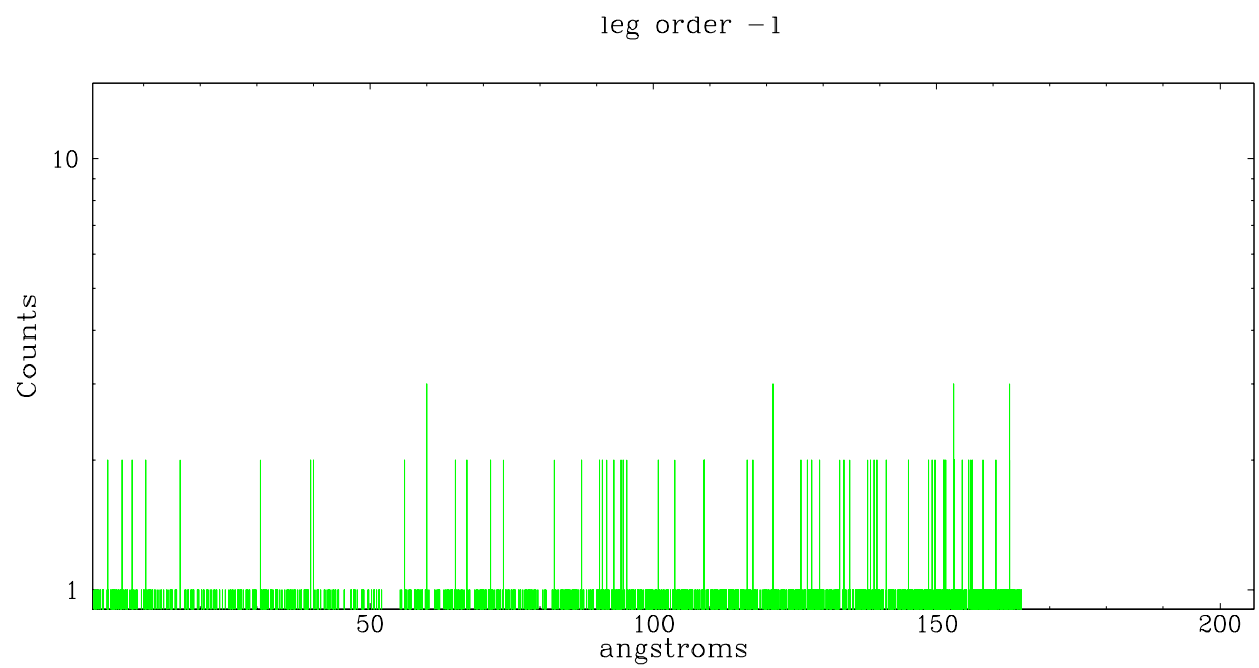


## 3 Gratings

### 3.1 LETG Arm



LETG Zero Order



# A Summary

## A.1 Status

V&V Scientist	Jen Lauer
V&V Date (YYYY-MM-DD)	2006.12.15
V&V Edition	1
V&V Disposition and Status	OK
V&V Charge Time	2.432

## A.2 Comments

Monitor constraint met.

Tgdetect found no sources, 0th order position defaulted to ra\_targ, dec\_targ.

Users should run sso\_freeze or the equivalent on the suite of comet observations before rerunning tgdetect.