

V&V Reference Report

L2 ASCDS Version : 7.6.9

Observation 2472 - L2 Version 001
Chandra X-Ray Center

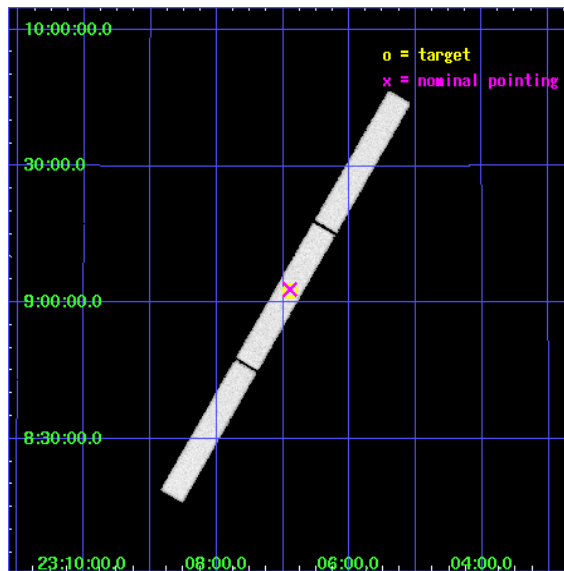
L2 Processing Date : Dec 11 2006

Contents

1	Front	2
2	OBI	3
2.1	OBI	3
2.1.1	Images	3
2.1.2	Parameters	4
2.1.3	Events	4
2.2	Compared Parameters	5
2.3	Aspect	6
2.4	Star Slots	9
2.4.1	Slot 3	9
2.4.2	Slot 4	10
2.4.3	Slot 5	11
2.4.4	Slot 6	12
2.4.5	Slot 7	13
2.5	FID Slots	14
2.5.1	Slot 0	14
2.5.2	Slot 1	15
2.5.3	Slot 2	16
3	Gratings	17
3.1	LETG Arm	17
A	Summary	19
A.1	Status	19
A.2	Comments	19

1 Front

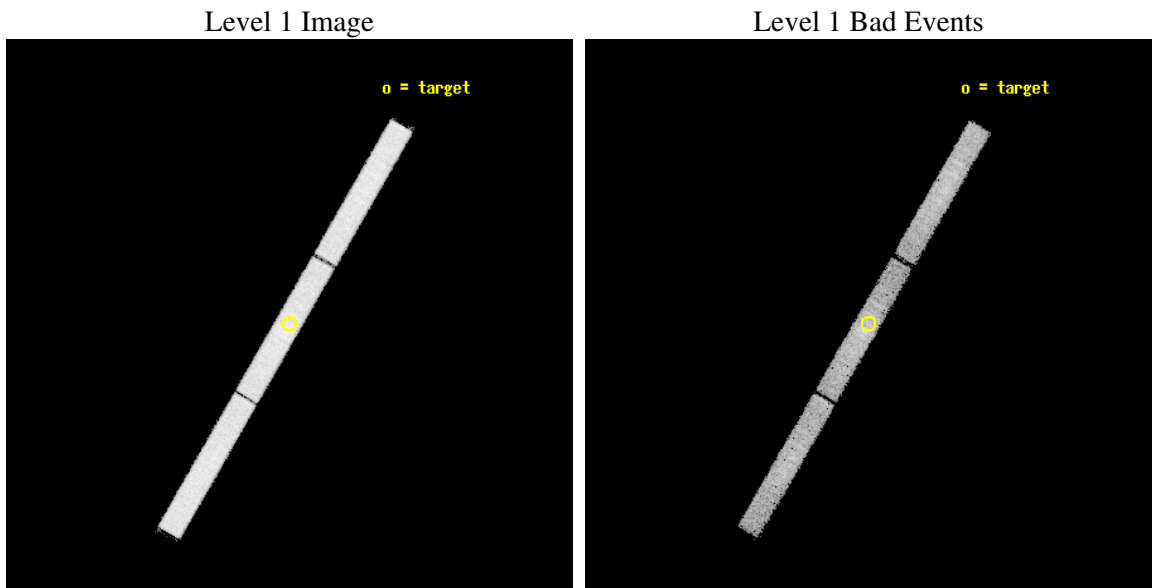
seq_num	100008
obs_id	2472
title	SOLVING THE PUZZLE OF COMETARY X-RAY ORIGIN: OBSERVATIONS OF COMET 10P/TEMPEL 2
observer	DR W. THOMAS VESTRAND
object	LINEAR 2001 A2
ra_targ	346.72603
dec_targ	9.04482
ra_nom	346.72423652816
dec_nom	9.0486504750278
roll_nom	120.04364334029
revision	2
ontime	2071.7813310474
livetime	2057.1933069917
l2events	125091



2 OBI

2.1 OBI

2.1.1 Images



2.1.2 Parameters

obi_num	0
ascdsver	7.6.9
caldbver	3.2.4
date	2006-12-12T00:03:49
revision	2

sched_exp_time	2250.000000
ontime	2161.7250845581
l1events	203029

2.1.3 Events

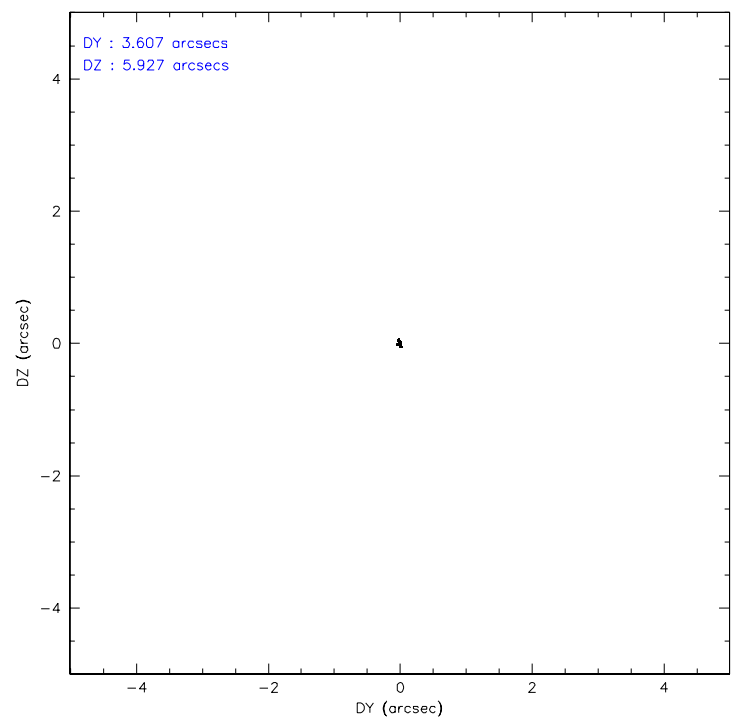
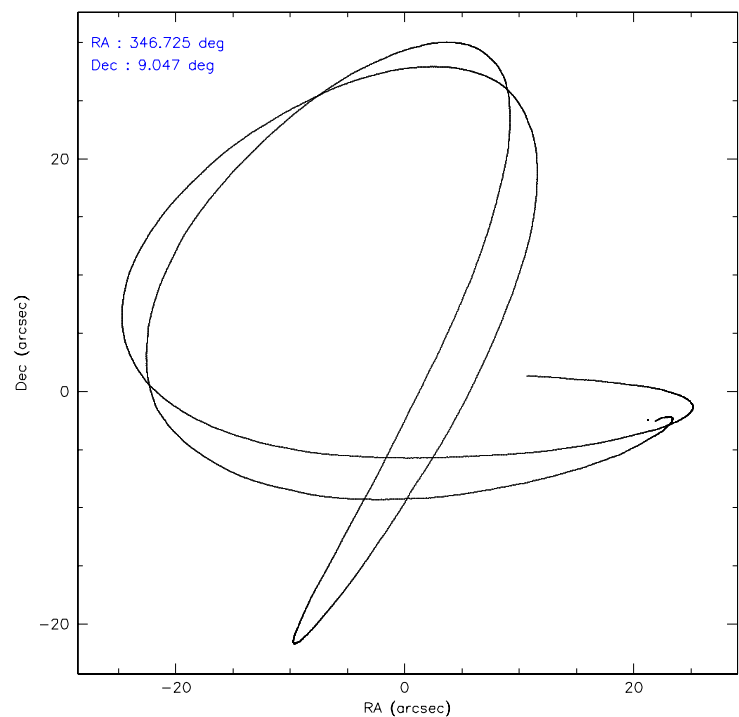
Level 1 Events

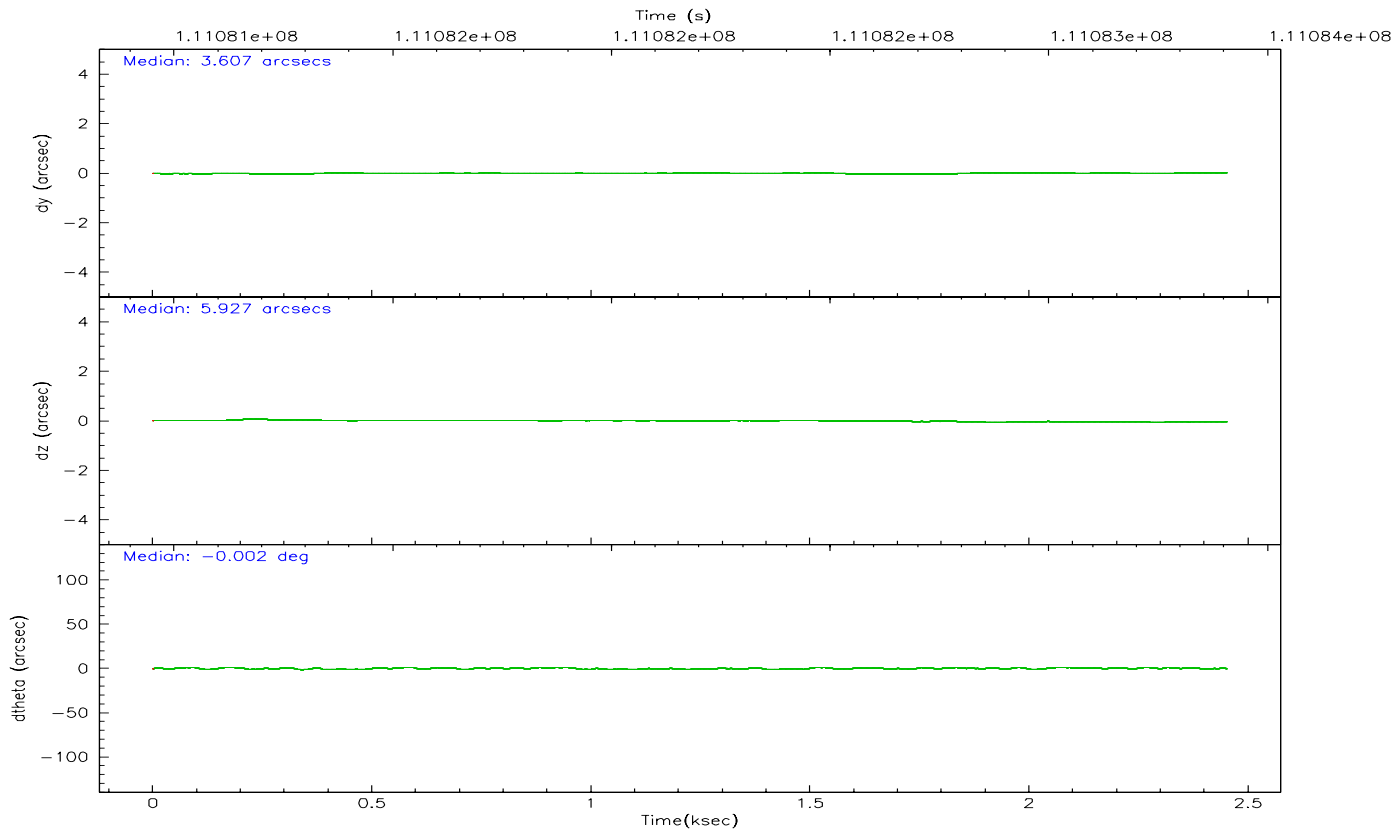
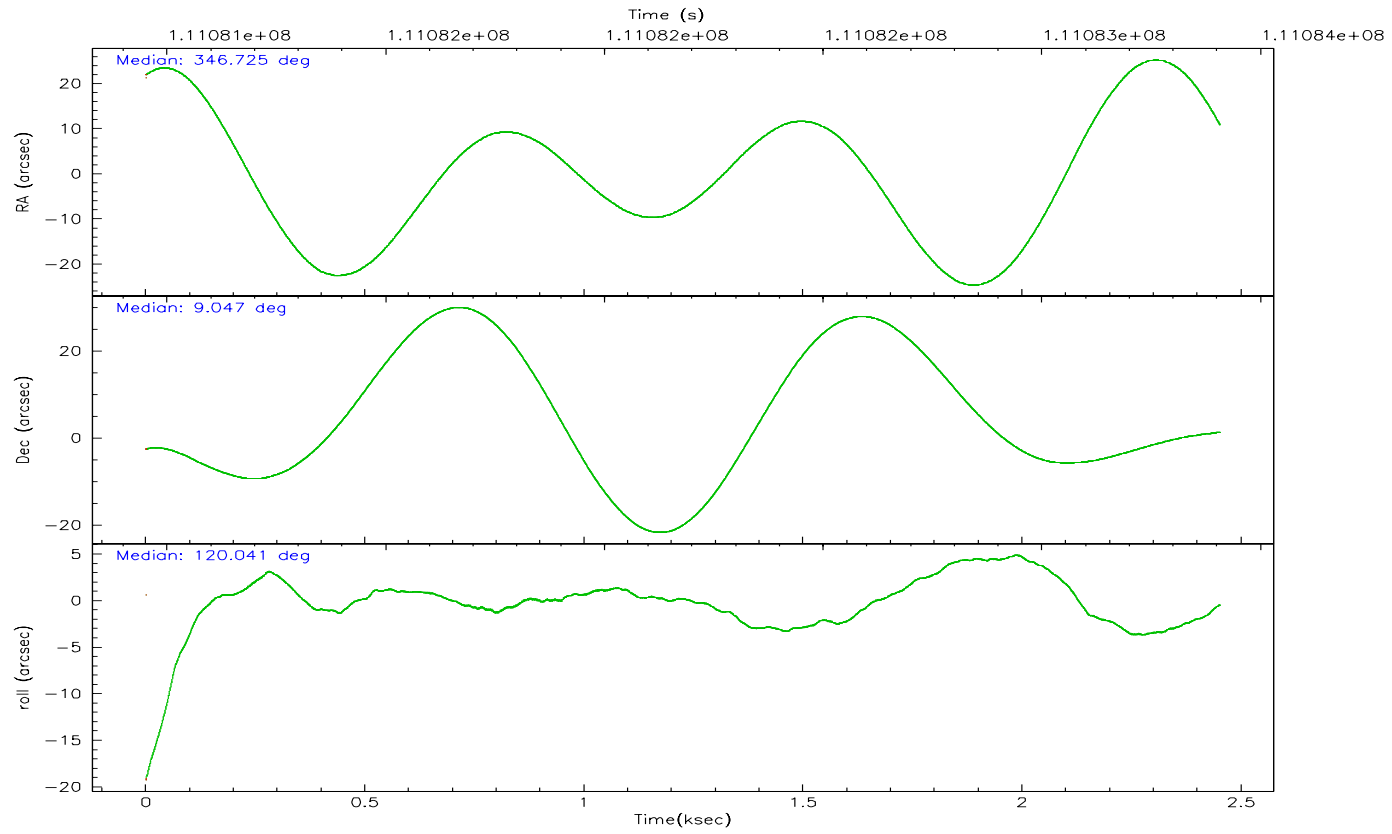
	segment 1	segment 2	segment 3
level 1 events	67929	66554	68546
rejected events	18999	20190	22382
rejected %	27%	30%	32%

2.2 Compared Parameters

Parameter	Planned	Actual	Parameter	Planned	Actual
Instrument	HRC	HRC	Obspar format version number	6	6
Detector	HRC-S	HRC-S	Obspar file type	PREDICTED	ACTUAL
Grating	LETG	LETG	Obspar update status	NONE	UPDATED
Data mode	OBSERVING	OBSERVING			
Observation mode	POINTING	POINTING			
Pointing RA	346.749551	346.724236528156			
Pointing Dec	9.035896	9.048650475027836			
Pointing Roll	119.972348	120.0436433402922			
SIM focus pos (mm)	-1.429586	-1.428180813131781			
SIM defocus (mm)	0.1037507710433287	0.1051558262725154			
SIM translation stage pos (mm)	250.455976	250.466033080201			
SIM translation stage offset (mm)	0	-0.01005468664627074			
Observation start time	111081154.184000	111080500.8234			
Observation start date	2001-07-09T15:51:30	2001-07-09T15:41:40			
Observation end time	111083404.184000	111083538.41102			
Observation end date	2001-07-09T16:29:00	2001-07-09T16:32:18			

2.3 Aspect



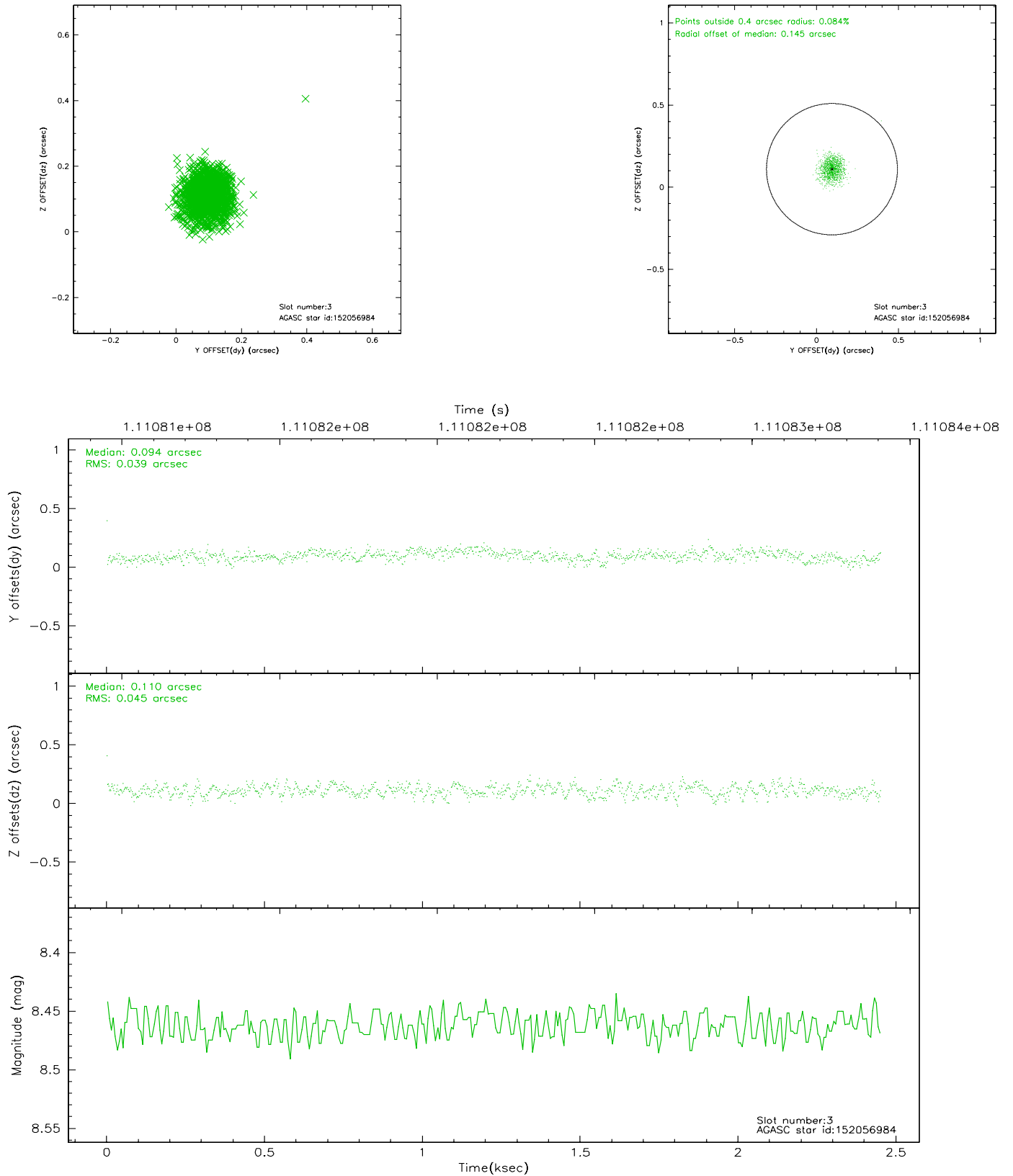


Slot Statistics

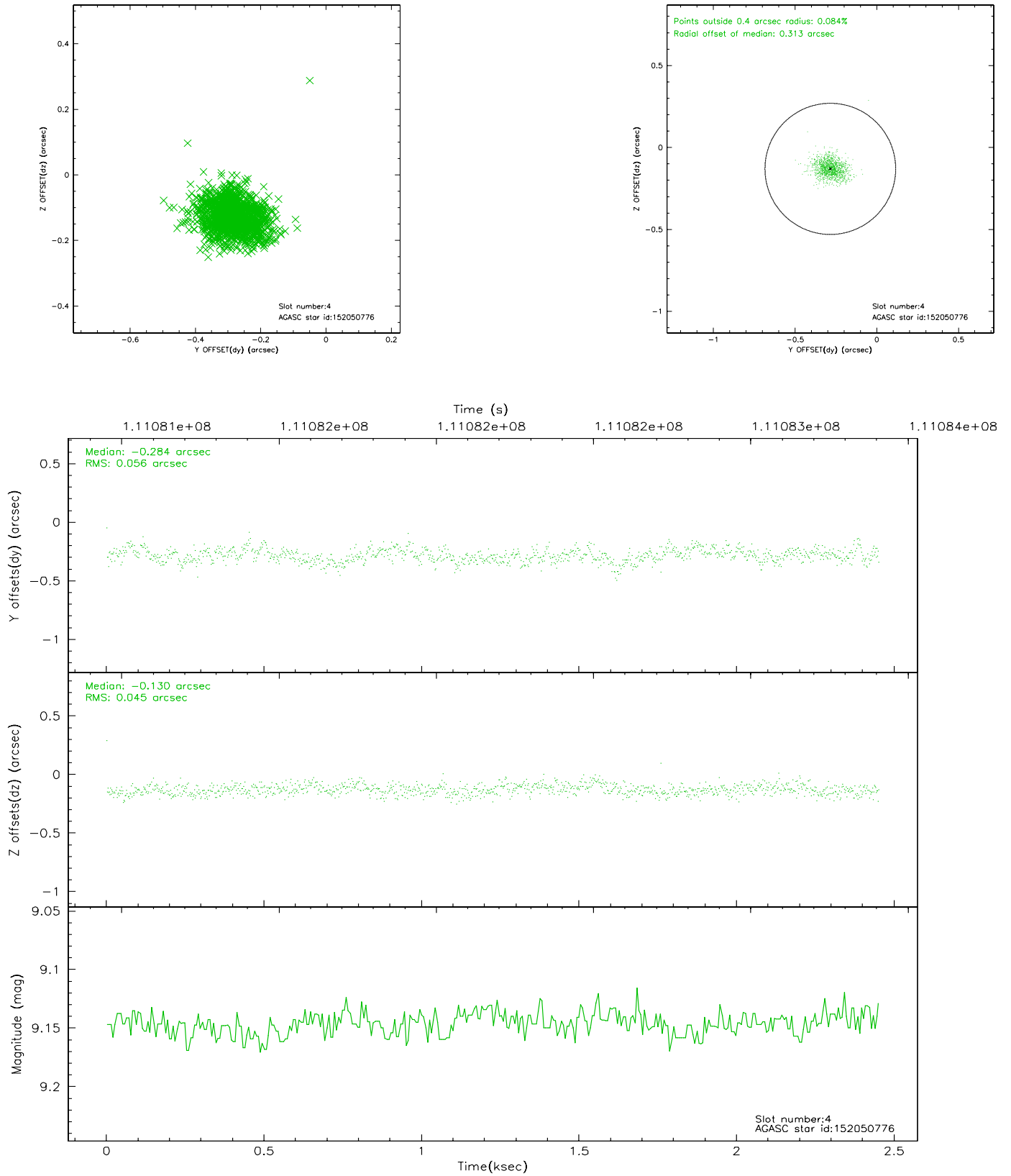
slot	status	id	mag	n_pts	med_dy	med_dz	dr1	dr2	ra	dec	mean_y	mean_z
0	FID	HRC-S-1	6.98	598	0.162	-0.150	0.006	0.011	0.000000	0.000000	-1157.65	-454.44
1	FID	HRC-S-2	6.98	599	0.079	-0.093	0.005	0.010	0.000000	0.000000	1240.02	-447.83
2	FID	HRC-S-3	7.00	599	0.148	-0.060	0.006	0.011	0.000000	0.000000	-1158.29	574.43
3	GUIDE	152056984	8.46	1197	0.094	0.110	0.064	0.099	347.141022	9.108410	-464.79	-1334.21
4	GUIDE	152050776	9.15	1196	-0.284	-0.130	0.075	0.126	346.189473	9.345260	1962.81	1167.08
5	GUIDE	152046384	9.40	1194	-0.083	-0.072	0.080	0.131	346.457953	9.242143	1166.21	529.24
6	GUIDE	152053000	9.27	1197	0.133	-0.146	0.089	0.143	346.794145	8.414960	-2011.27	981.27
7	GUIDE	152183096	9.82	1195	0.141	0.236	0.104	0.170	347.485637	8.742297	-2219.87	-1739.39

2.4 Star Slots

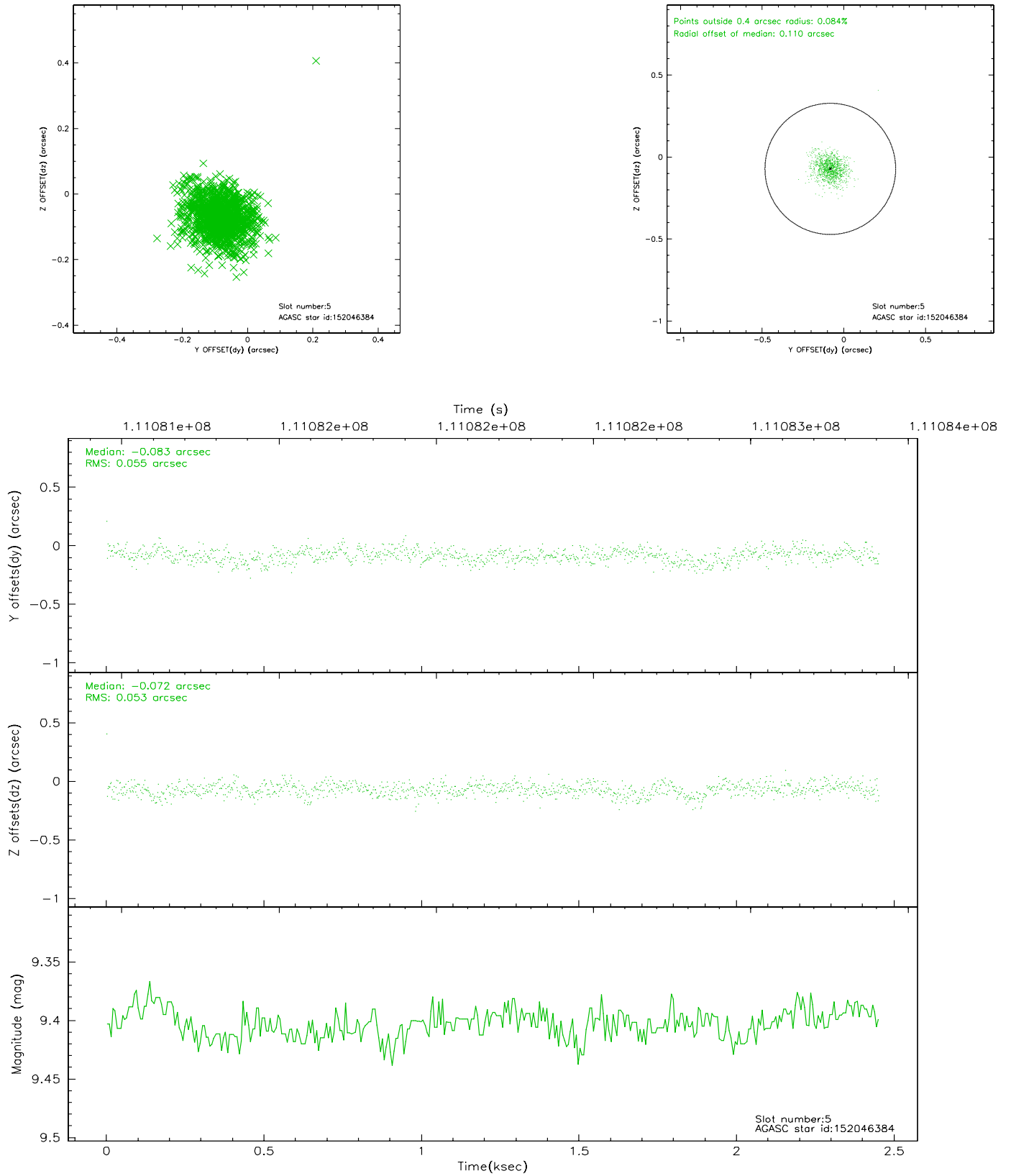
2.4.1 Slot 3



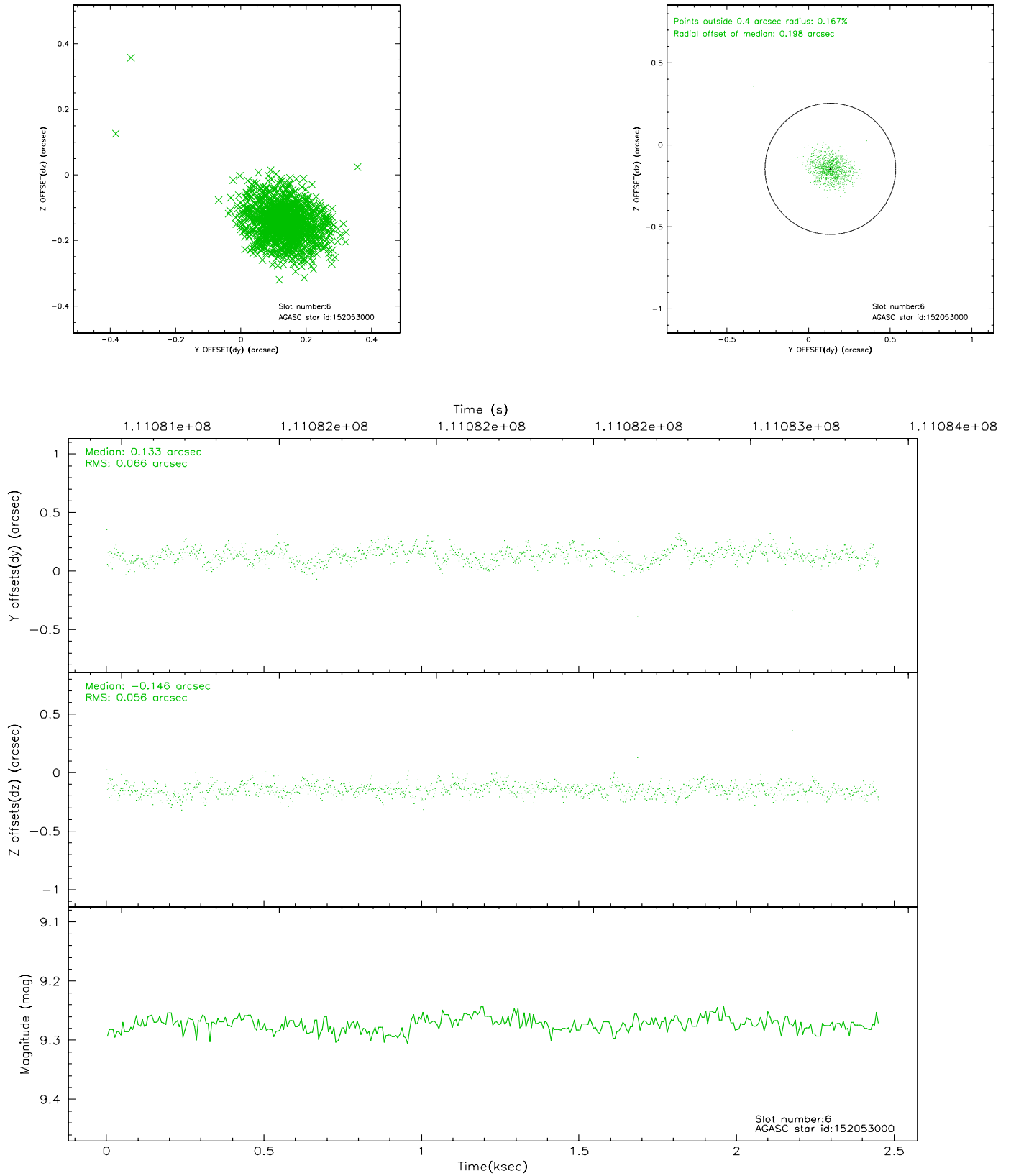
2.4.2 Slot 4



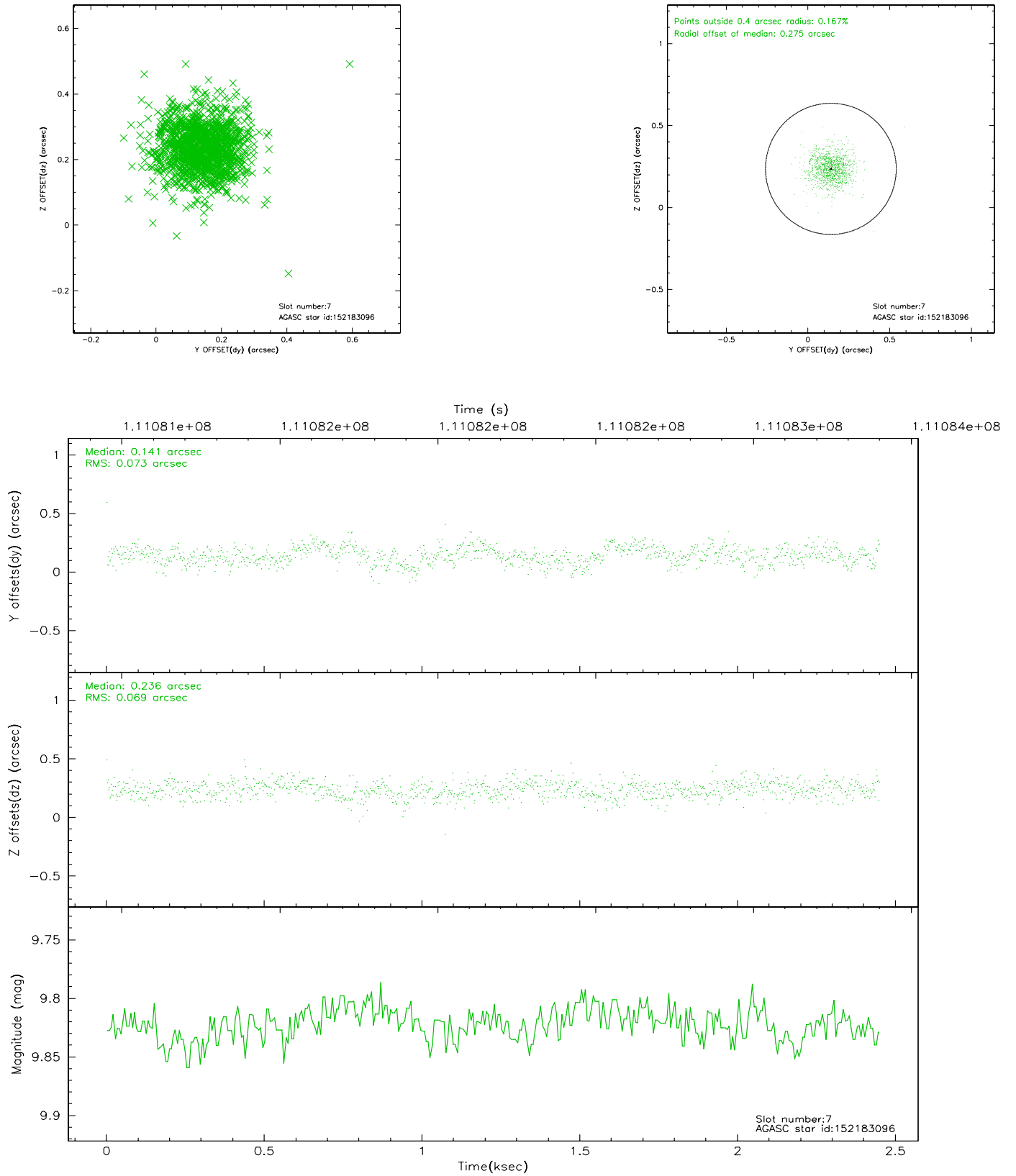
2.4.3 Slot 5



2.4.4 Slot 6

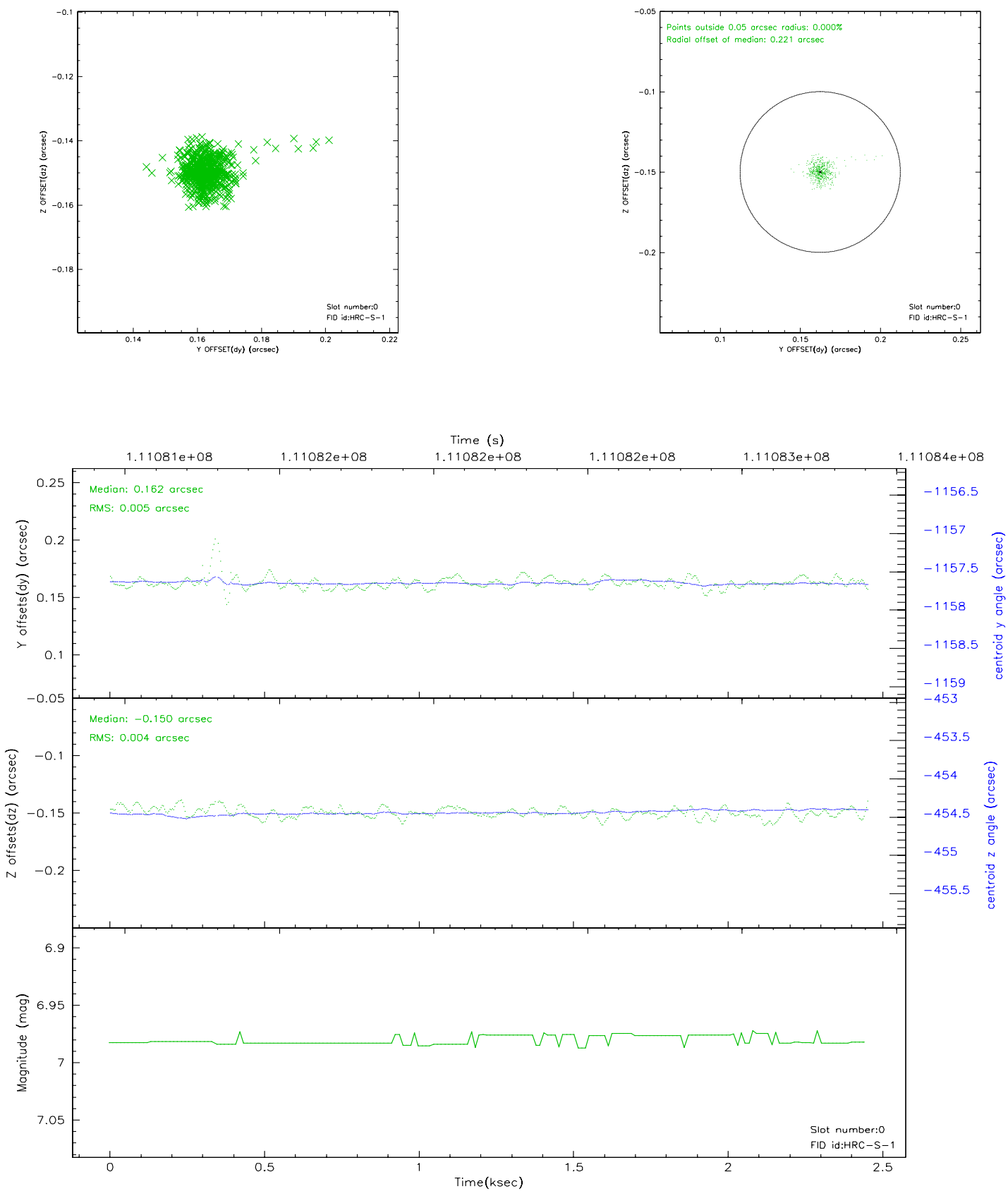


2.4.5 Slot 7

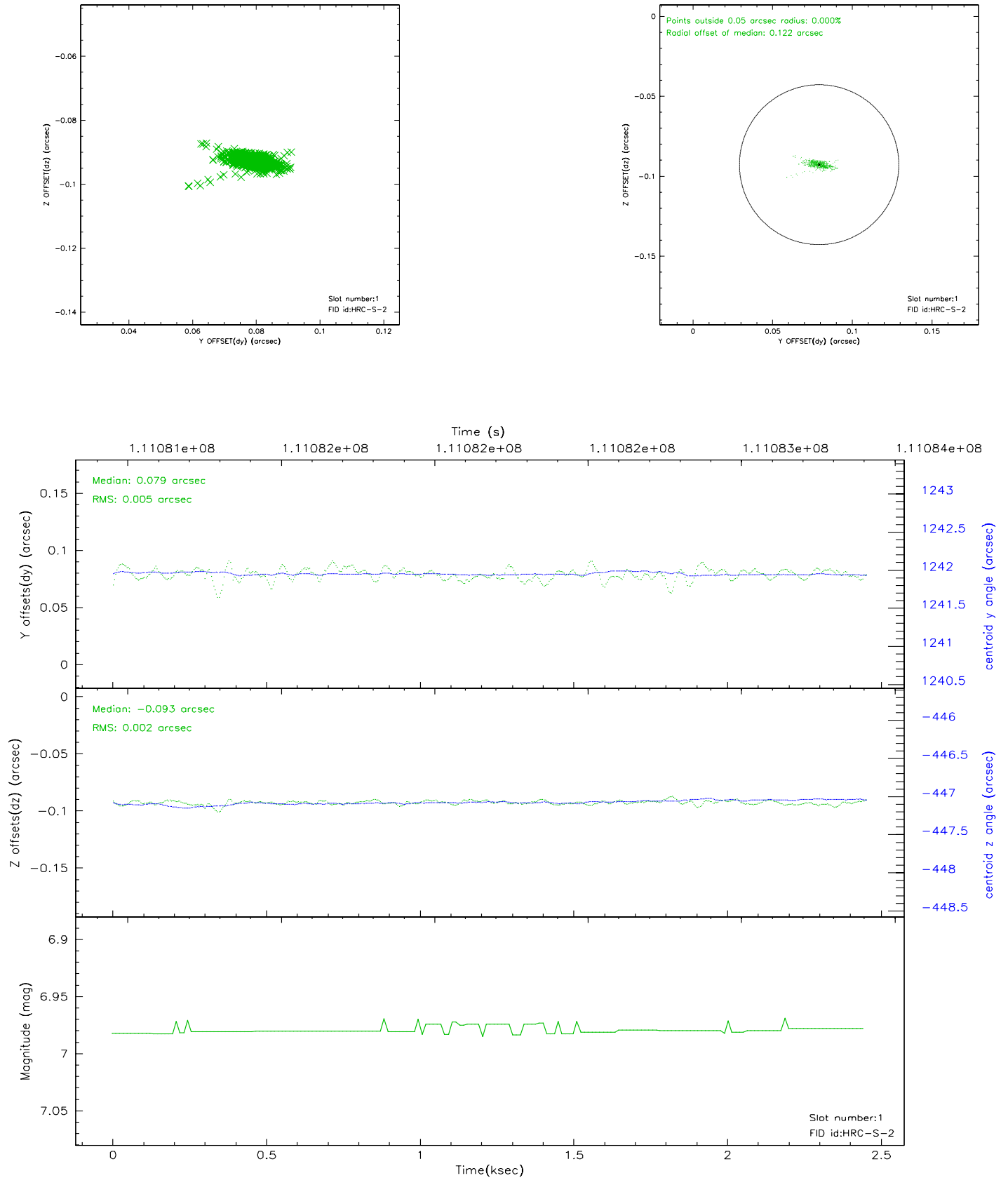


2.5 FID Slots

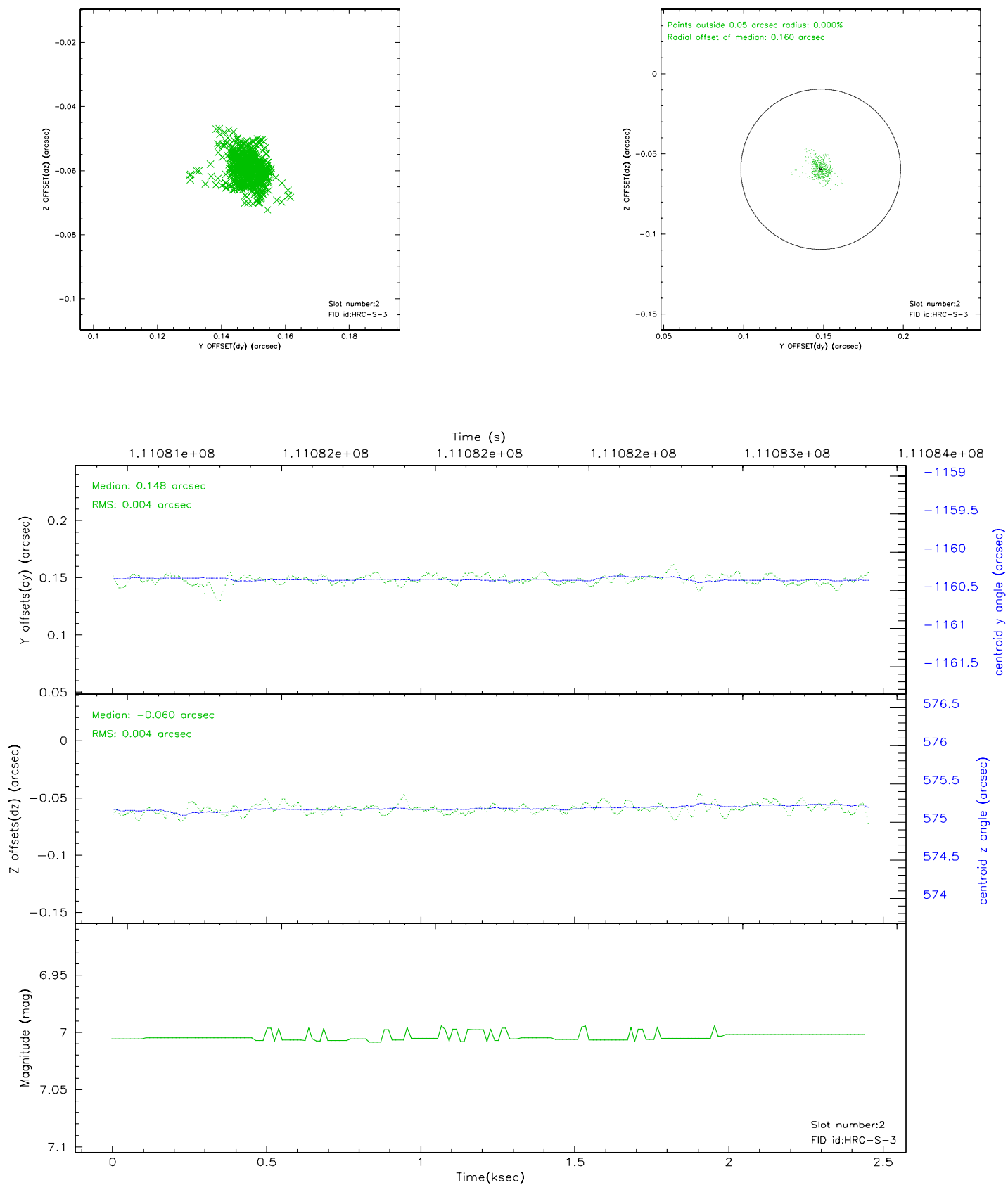
2.5.1 Slot 0



2.5.2 Slot 1

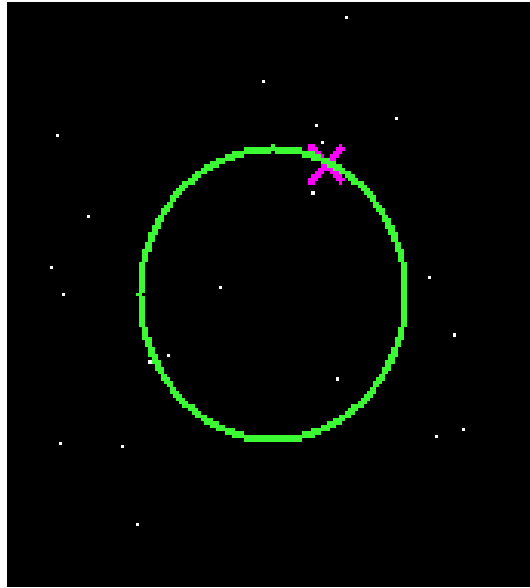


2.5.3 Slot 2

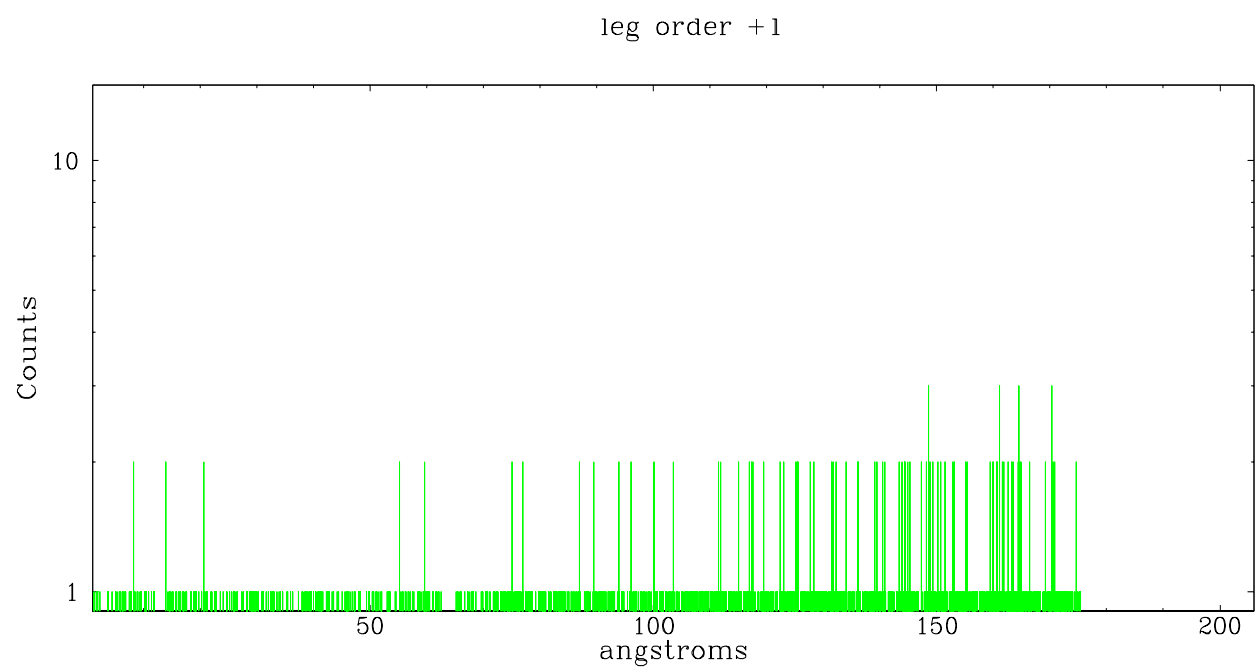
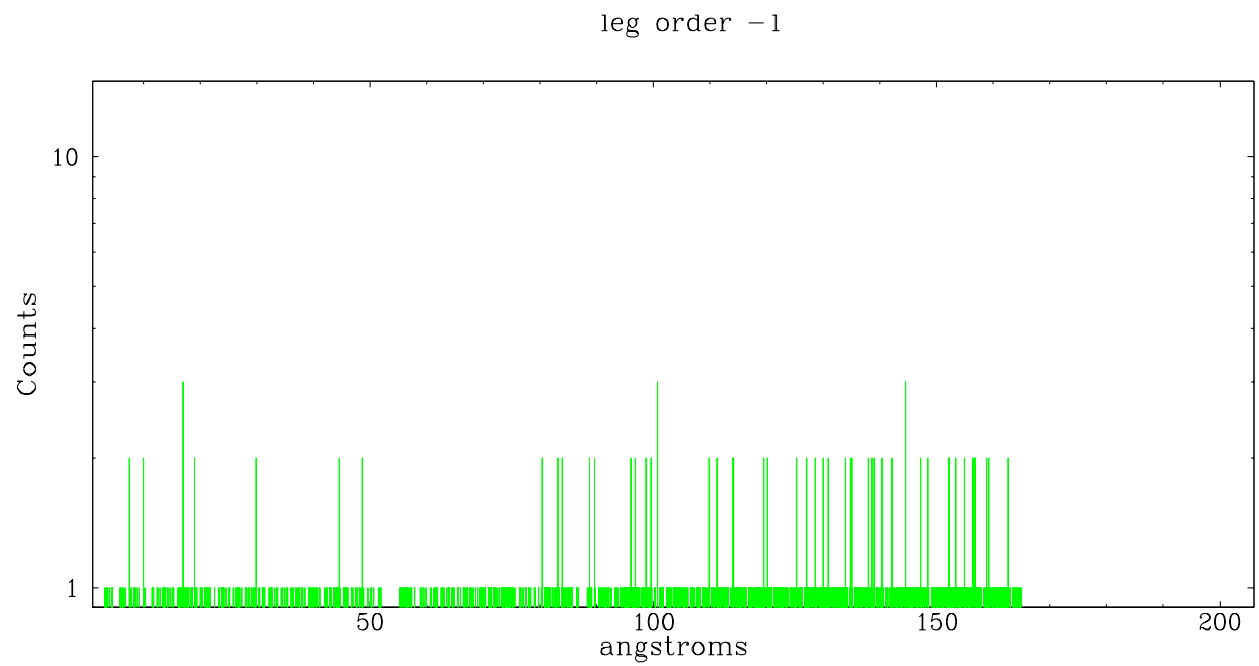


3 Gratings

3.1 LETG Arm



LETG Zero Order



A Summary

A.1 Status

V&V Scientist	Jen Lauer
V&V Date (YYYY-MM-DD)	2006.12.15
V&V Edition	1
V&V Disposition and Status	OK
V&V Charge Time	2.071

A.2 Comments

Tgdetect found no sources, 0th order position defaulted to ra_targ, dec_targ.

Users should run sso_freeze or the equivalent on the suite of comet observations before rerunning tgdetect.