

# V&V Reference Report

## L2 ASCDS Version : 10.4

Observation 51804 - L2 Version 1  
Chandra X-Ray Center

L2 Processing Date : Jun 30 2015

## Contents

<b>1</b>	<b>Front</b>	<b>2</b>
<b>2</b>	<b>OBI</b>	<b>3</b>
2.1	OBI . . . . .	3
2.1.1	Images . . . . .	3
2.1.2	Bias . . . . .	3
2.1.3	Parameters . . . . .	4
2.1.4	Events . . . . .	4
2.2	Compared Parameters . . . . .	5
2.3	Star Slots . . . . .	6
2.4	FID Slots . . . . .	6
<b>A</b>	<b>Summary</b>	<b>7</b>
A.1	Status . . . . .	7
A.2	Comments . . . . .	7

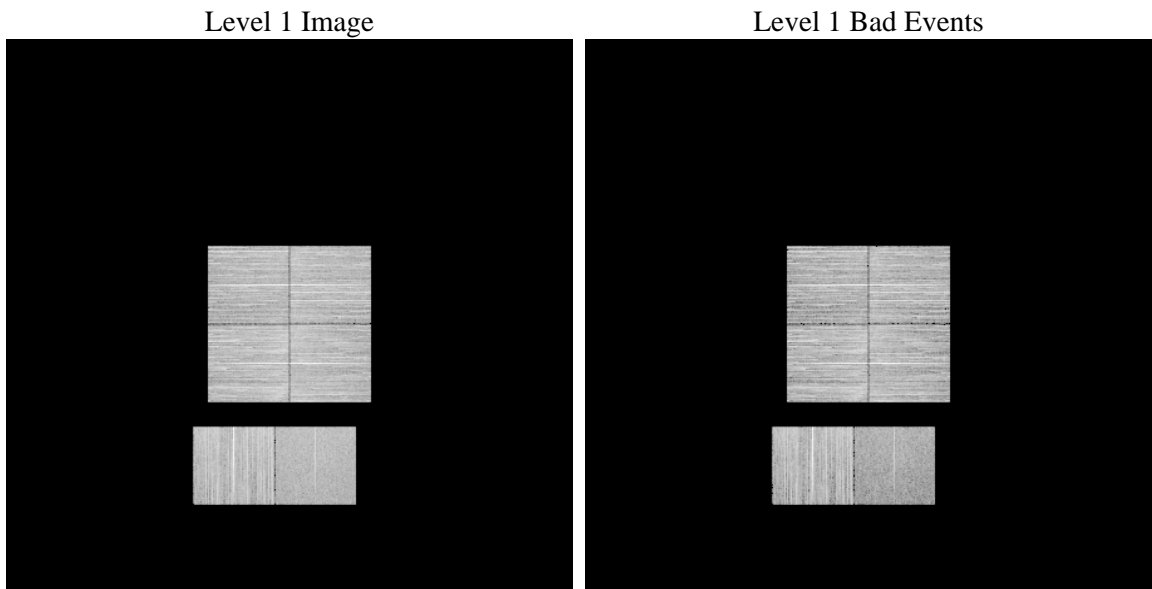
# 1 Front

seq_num	&#160	Sequence number
obs_id	51804	Observation id
title	ACIS-012367 diagnostics	Proposal title
observer	CHANDRA engineering request/realtime commanding	Principal investig
object	&#160	Source name
dtcycle	0	&#160
cycle	P	events from which exps? Prim/Second/Both
ra_targ	0.0	Observer's specified target RA [deg]
dec_targ	0.0	Observer's specified target Dec [deg]
ra_nom	254.99645537966	Nominal RA [deg]
dec_nom	-12.127406761326	Nominal Dec [deg]
roll_nom	240.12977012651	Nominal Roll [deg]
revision	1	Processing version of data
ontime	8244.9654749632	Sum of GTIs [s]
livetime	8140.562757597	Livetime [s]
ontime0	8244.9244349003	Sum of GTIs [s]
ontime1	8244.8833949566	Sum of GTIs [s]
ontime2	8244.8423548937	Sum of GTIs [s]
ontime3	8245.0065149069	Sum of GTIs [s]
ontime6	8244.80131495	Sum of GTIs [s]
ontime7	8244.9654749632	Sum of GTIs [s]
l2events	159588	Number of level 2 events

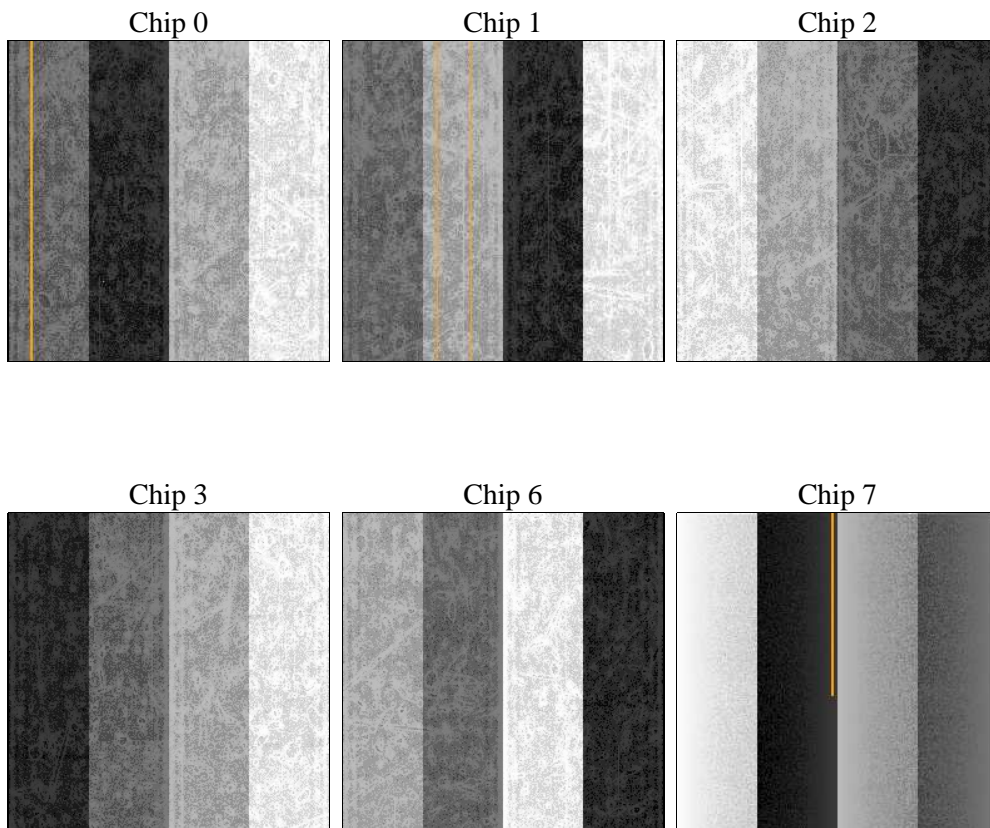
## 2 OBI

### 2.1 OBI

#### 2.1.1 Images



#### 2.1.2 Bias



### 2.1.3 Parameters

obi_num	2	Obi number	sched_exp_time	0.0	[s] Scheduled observation exposure time
ascdsver	10.4	Processing system revision	ontime	8244.9654749632	Sum of GTIs [s]
caldbver	4.6.7	&#160	ontime0	8244.9244349003	Sum of GTIs [s]
date	2015-06-30T07:10:57	Date and time of file creation	ontime1	8244.8833949566	Sum of GTIs [s]
revision	1	Processing version of data	ontime2	8244.8423548937	Sum of GTIs [s]
			ontime3	8245.0065149069	Sum of GTIs [s]
			ontime6	8244.80131495	Sum of GTIs [s]
			ontime7	8244.9654749632	Sum of GTIs [s]
			l1events	824764	Number of level 1 events

### 2.1.4 Events

	ccd 0	ccd 1	ccd 2	ccd 3	ccd 6	ccd 7		ccd 0	ccd 1	ccd 2	ccd 3	ccd 6	ccd 7
level 1 events	132083	140553	152047	140471	146881	112729	grade 0 events	11655	11194	11935	12090	11501	6194
rejected events	108217	116181	128347	116185	121825	64606		8%	7%	7%	8%	7%	5%
rejected %	81%	82%	84%	82%	82%	57%	grade 1 events	54	64	62	76	51	81
								0%	0%	0%	0%	0%	0%
							grade 2 events	5134	5647	4802	4822	5624	12091
								3%	4%	3%	3%	3%	10%
							grade 3 events	1654	1605	1632	1668	1654	3611
								1%	1%	1%	1%	1%	3%
							grade 4 events	1557	1674	1640	1694	1620	3641
								1%	1%	1%	1%	1%	3%
							grade 5 events	2765	2731	2549	3021	2787	7068
								2%	1%	1%	2%	1%	6%
							grade 6 events	3983	4373	3783	4100	4765	22742
								3%	3%	2%	2%	3%	20%
							grade 7 events	105281	113265	125644	113000	118879	57301
								79%	80%	82%	80%	80%	50%

## 2.2 Compared Parameters

Parameter	Planned	Actual	Parameter	Planned	Actual
Instrument	ACIS	ACIS	Obspar format version number	7	7
Detector	ACIS-012367	ACIS-012367	Obspar file type	PREDICTED	ACTUAL
Grating	NONE	NONE	Obspar update status	NONE	UPDATED
Data mode	FAINT	FAINT	Number of optional ACIS chips dropped	0	0
Observation mode	SECONDARY	SECONDARY	On-chip summing requested	N	N
[deg] Pointing RA	0	254.9964553796643	Subarray requested	NONE	NONE
[deg] Pointing Dec	0	-12.12740676132579	Alternating exposures requested	N	N
[deg] Pointing Roll	0.0	240.1297701265108	[s] Primary exposure time	3.2	3.2
[mm] SIM focus pos	-1.429586	-1.428180813131781			
[mm] SIM defocus	0.1037507710433287	0.1051558262725154			
[mm] SIM translation stage pos	250.455976	250.466033080201			
[mm] SIM translation stage offset	0	-0.01005468664627074			
[s] Observation start time (MET)	551992171.659295	551992170.6343			
Observation start date	2015-06-29T19:09:32	2015-06-29T19:09:30			
[s] Observation end time (MET)	552001989.1098469	552001988.08485			
Observation end date	2015-06-29T21:53:09	2015-06-29T21:53:08			
Read mode	TIMED	TIMED			

## **2.3 Star Slots**

## **2.4 FID Slots**

## A Summary

### A.1 Status

V&V Scientist	Joy Nichols
V&V Date (YYYY-MM-DD)	2015.06.30
V&V Edition	1
V&V Disposition and Status	OK
V&V Charge Time	8.2449654749632

### A.2 Comments