

# V&V Reference Report

## L2 ASCDS Version : 10.4.2.1

Observation 51461 - L2 Version 1  
Chandra X-Ray Center

L2 Processing Date : Dec 1 2015

## Contents

<b>1</b>	<b>Front</b>	<b>2</b>
<b>2</b>	<b>OBI</b>	<b>3</b>
2.1	OBI . . . . .	3
2.1.1	Images . . . . .	3
2.1.2	Bias . . . . .	3
2.1.3	Parameters . . . . .	4
2.1.4	Events . . . . .	4
2.2	Compared Parameters . . . . .	5
2.3	Star Slots . . . . .	6
2.4	FID Slots . . . . .	6
<b>A</b>	<b>Summary</b>	<b>7</b>
A.1	Status . . . . .	7
A.2	Comments . . . . .	7

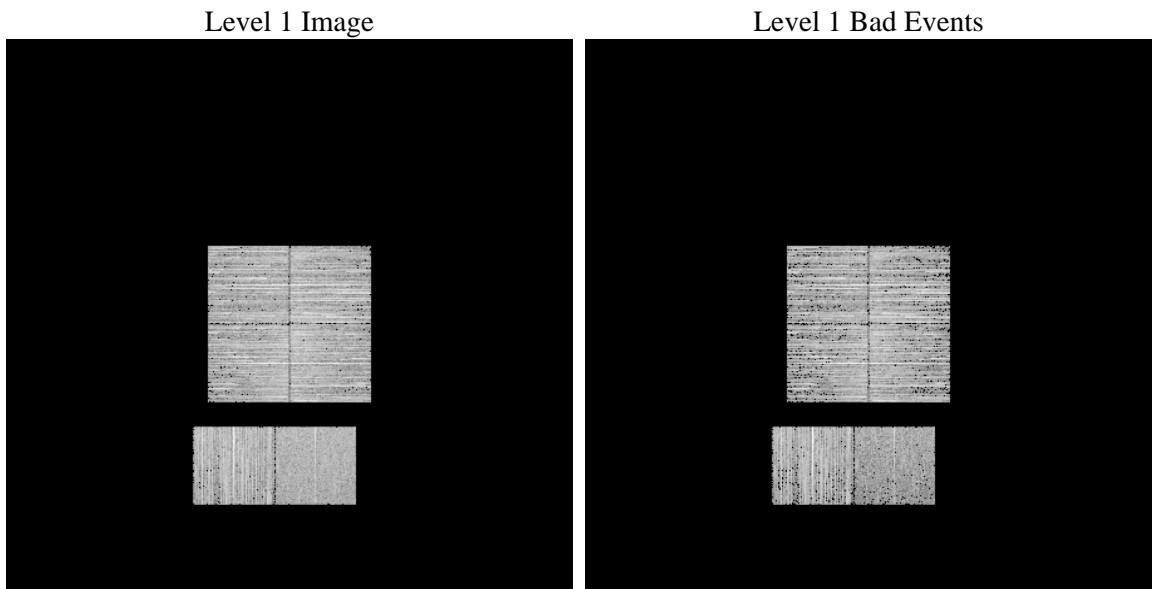
# 1 Front

seq_num	&#160	Sequence number
obs_id	51461	Observation id
title	ACIS-012367 diagnostics	Proposal title
observer	CHANDRA engineering request/realtime commanding	Principal investig
object	&#160	Source name
dtcycle	0	&#160
cycle	P	events from which exps? Prim/Second/Both
ra_targ	0.0	Observer's specified target RA [deg]
dec_targ	0.0	Observer's specified target Dec [deg]
ra_nom	90.966212356469	Nominal RA [deg]
dec_nom	37.01495076757	Nominal Dec [deg]
roll_nom	118.64993719412	Nominal Roll [deg]
revision	1	Processing version of data
ontime	2672.0000398159	Sum of GTIs [s]
livetime	2638.1655664265	Livetime [s]
ontime0	2672.0000398159	Sum of GTIs [s]
ontime1	2672.0000398159	Sum of GTIs [s]
ontime2	2672.0000398159	Sum of GTIs [s]
ontime3	2672.0000398159	Sum of GTIs [s]
ontime6	2672.0000398159	Sum of GTIs [s]
ontime7	2672.0000398159	Sum of GTIs [s]
l2events	48357	Number of level 2 events

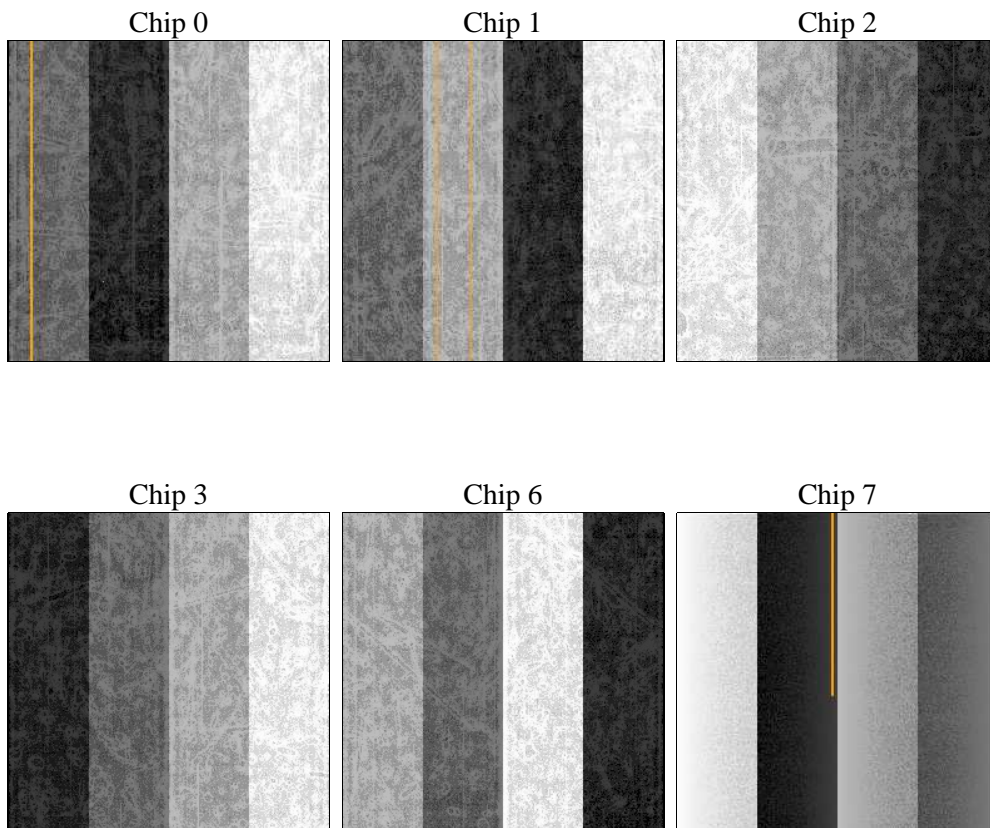
## 2 OBI

### 2.1 OBI

#### 2.1.1 Images



#### 2.1.2 Bias



### 2.1.3 Parameters

obi_num	0	Obi number	sched_exp_time	0.0	[s] Scheduled observation exposure time
ascdsver	10.4.2.1	Processing system revision	ontime	2672.0000398159	Sum of GTIs [s]
caldbver	4.6.10a	&#160	ontime0	2672.0000398159	Sum of GTIs [s]
date	2015-12-01T06:04:07	Date and time of file creation	ontime1	2672.0000398159	Sum of GTIs [s]
revision	1	Processing version of data	ontime2	2672.0000398159	Sum of GTIs [s]
			ontime3	2672.0000398159	Sum of GTIs [s]
			ontime6	2672.0000398159	Sum of GTIs [s]
			ontime7	2672.0000398159	Sum of GTIs [s]
			l1events	303400	Number of level 1 events

### 2.1.4 Events

	ccd 0	ccd 1	ccd 2	ccd 3	ccd 6	ccd 7		ccd 0	ccd 1	ccd 2	ccd 3	ccd 6	ccd 7
level 1 events	50614	55697	51078	52364	52394	41253	grade 0 events	3208	2852	3389	3339	3011	1809
rejected events	43624	48730	44111	45305	45105	25021		6%	5%	6%	6%	5%	4%
rejected %	86%	87%	86%	86%	86%	60%	grade 1 events	16	25	13	20	17	47
								0%	0%	0%	0%	0%	0%
							grade 2 events	1631	1878	1489	1524	1922	4129
								3%	3%	2%	2%	3%	10%
							grade 3 events	479	452	511	506	473	1136
								0%	0%	1%	0%	0%	2%
							grade 4 events	485	463	500	489	417	1088
								0%	0%	0%	0%	0%	2%
							grade 5 events	994	993	908	1131	1002	2456
								1%	1%	1%	2%	1%	5%
							grade 6 events	1187	1322	1078	1210	1466	8087
								2%	2%	2%	2%	2%	19%
							grade 7 events	42614	47712	43190	44145	44086	22501
								84%	85%	84%	84%	84%	54%

## 2.2 Compared Parameters

Parameter	Planned	Actual	Parameter	Planned	Actual
Instrument	ACIS	ACIS	Obspar format version number	7	7
Detector	ACIS-012367	ACIS-012367	Obspar file type	PREDICTED	ACTUAL
Grating	NONE	NONE	Obspar update status	NONE	UPDATED
Data mode	FAINT	FAINT	Number of optional ACIS chips dropped	0	0
Observation mode	SECONDARY	SECONDARY	On-chip summing requested	N	N
[deg] Pointing RA	0	90.96621235646879	Subarray requested	NONE	NONE
[deg] Pointing Dec	0	37.01495076756965	Alternating exposures requested	N	N
[deg] Pointing Roll	0.0	118.6499371941232	[s] Primary exposure time	3.2	3.2
[mm] SIM focus pos	-1.429586	-1.428180813131781			
[mm] SIM defocus	0.1037507710433287	0.1051558262725154			
[mm] SIM translation stage pos	250.455976	250.466033080201			
[mm] SIM translation stage offset	0	-0.01005468664627074			
[s] Observation start time (MET)	565285166.54881	565285165.52381			
Observation start date	2015-11-30T15:39:27	2015-11-30T15:39:25			
[s] Observation end time (MET)	565296646.549461	565296645.52446			
Observation end date	2015-11-30T18:50:47	2015-11-30T18:50:45			
Read mode	TIMED	TIMED			

## 2.3 Star Slots

## 2.4 FID Slots

## A Summary

### A.1 Status

V&V Scientist	Joy Nichols
V&V Date (YYYY-MM-DD)	2015.12.01
V&V Edition	1
V&V Disposition and Status	OK
V&V Charge Time	2.6720000398159

### A.2 Comments