

# V&V Reference Report

## L2 ASCDS Version : 10.1.1

Observation 62674 - L2 Version 1  
Chandra X-Ray Center

L2 Processing Date : Jan 13 2014

## Contents

<b>1</b>	<b>Front</b>	<b>2</b>
<b>2</b>	<b>OBI</b>	<b>3</b>
2.1	OBI . . . . .	3
2.1.1	Images . . . . .	3
2.1.2	Bias . . . . .	3
2.1.3	Parameters . . . . .	4
2.1.4	Events . . . . .	4
2.2	Compared Parameters . . . . .	5
2.3	Star Slots . . . . .	6
2.4	FID Slots . . . . .	6
<b>A</b>	<b>Summary</b>	<b>7</b>
A.1	Status . . . . .	7
A.2	Comments . . . . .	7

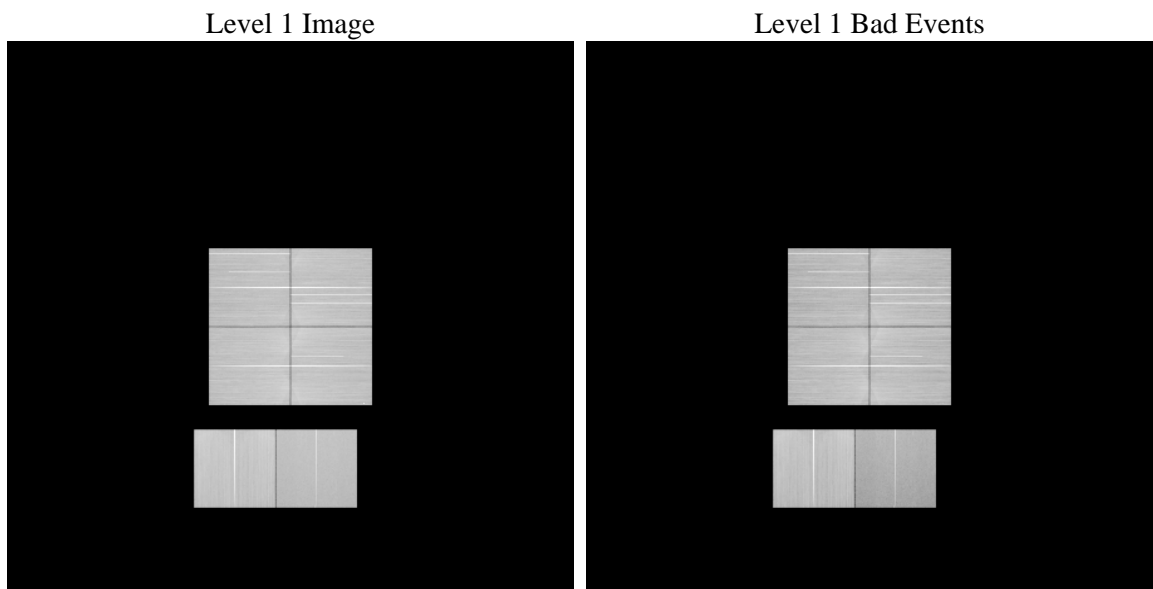
# 1 Front

seq_num	&#160	Sequence number
obs_id	62674	Observation id
title	ACIS-012367 diagnostics	Proposal title
observer	CHANDRA engineering request/realtime commanding	Principal investig
object	&#160	Source name
dtcycle	0	&#160
cycle	P	events from which exps? Prim/Second/Both
ra_targ	0.0	Observer's specified target RA [deg]
dec_targ	0.0	Observer's specified target Dec [deg]
ra_nom	199.75786331004	Nominal RA [deg]
dec_nom	3.7188870728852	Nominal Dec [deg]
roll_nom	212.62936431331	Nominal Roll [deg]
revision	1	Processing version of data
ontime	117853.40474933	Sum of GTIs [s]
livetime	116361.0739756	Livetime [s]
ontime0	117846.92276889	Sum of GTIs [s]
ontime1	117853.40472943	Sum of GTIs [s]
ontime2	117853.40472943	Sum of GTIs [s]
ontime3	117853.40472943	Sum of GTIs [s]
ontime6	117846.0269953	Sum of GTIs [s]
ontime7	117853.40474933	Sum of GTIs [s]
l2events	2653976	Number of level 2 events

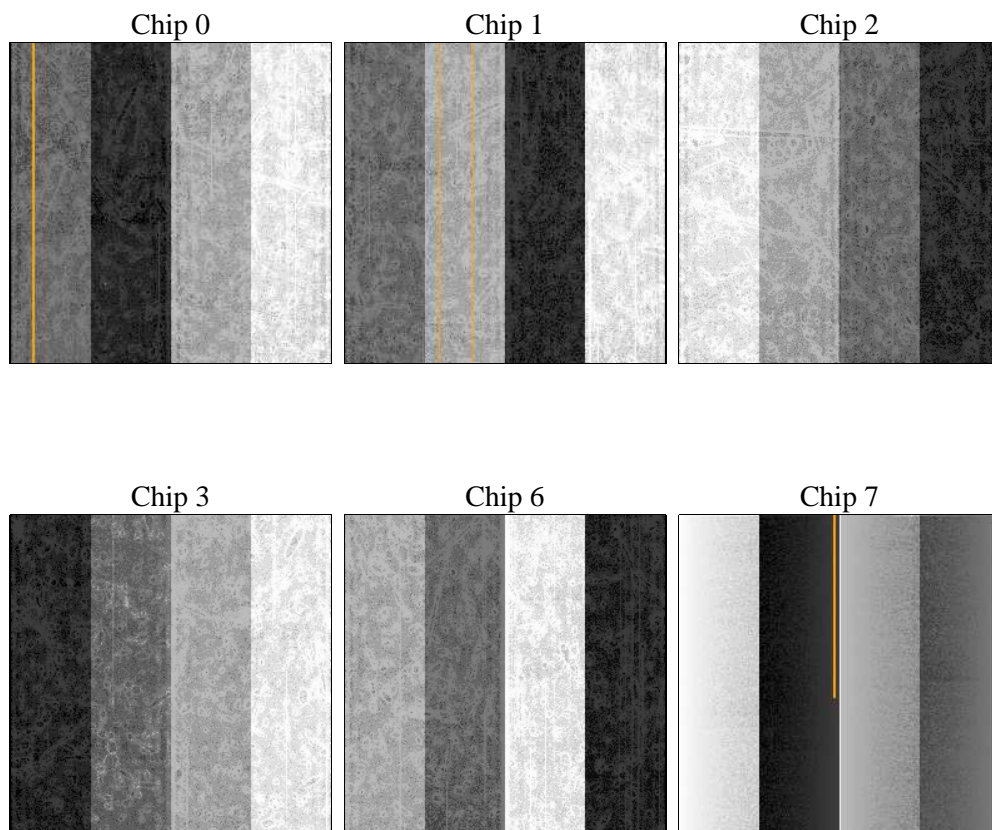
## 2 OBI

### 2.1 OBI

#### 2.1.1 Images



#### 2.1.2 Bias



### 2.1.3 Parameters

obi_num	0	Obi number	sched_exp_time	0.0	[s] Scheduled observation exposure time
ascdsver	10.1.1	Processing system revision	ontime	117853.40474933	Sum of GTIs [s]
caldsver	4.6.0	&#160	ontime0	117846.92276889	Sum of GTIs [s]
date	2014-01-13T10:33:54	Date and time of file creation	ontime1	117853.40472943	Sum of GTIs [s]
revision	1	Processing version of data	ontime2	117853.40472943	Sum of GTIs [s]
			ontime3	117853.40472943	Sum of GTIs [s]
			ontime6	117846.0269953	Sum of GTIs [s]
			ontime7	117853.40474933	Sum of GTIs [s]
			l1events	12087541	Number of level 1 events

### 2.1.4 Events

	ccd 0	ccd 1	ccd 2	ccd 3	ccd 6	ccd 7		ccd 0	ccd 1	ccd 2	ccd 3	ccd 6	ccd 7
level 1 events	1928476	2108668	2110425	2106953	2185361	1647658	grade 0 events	205283	200173	211264	214290	208887	1083
rejected events	1521592	1699193	1702956	1694834	1760987	892628		10%	9%	10%	10%	9%	6%
rejected %	78%	80%	80%	80%	80%	54%	grade 1 events	1061	925	1143	1207	944	1160
								0%	0%	0%	0%	0%	0%
							grade 2 events	82146	86187	78284	78252	85660	1849
								4%	4%	3%	3%	3%	11%
							grade 3 events	27913	27292	28133	28384	27896	6203
								1%	1%	1%	1%	1%	3%
							grade 4 events	27015	27465	27815	28590	27721	6154
								1%	1%	1%	1%	1%	3%
							grade 5 events	38763	39185	36467	42556	41031	1007
								2%	1%	1%	2%	1%	6%
							grade 6 events	64527	68358	61973	62603	74210	3381
								3%	3%	2%	2%	3%	20%
							grade 7 events	1481768	1659083	1665346	1651071	1719012	7907
								76%	78%	78%	78%	78%	47%

## 2.2 Compared Parameters

Parameter	Planned	Actual	Parameter	Planned	Actual
Instrument	ACIS	ACIS	Obspar format version number	7	7
Detector	ACIS-012367	ACIS-012367	Obspar file type	PREDICTED	ACTUAL
Grating	NONE	NONE	Obspar update status	NONE	UPDATED
Data mode	FAINT	FAINT	Number of optional ACIS chips dropped	0	0
Observation mode	SECONDARY	SECONDARY	On-chip summing requested	N	N
[deg] Pointing RA	0	199.7578633100361	Subarray requested	NONE	NONE
[deg] Pointing Dec	0	3.718887072885245	Alternating exposures requested	N	N
[deg] Pointing Roll	0.0	212.6293643133127	[s] Primary exposure time	3.2	3.2
[mm] SIM focus pos	-1.429586	-0.7809083437167272			
[mm] SIM defocus	0.1037507710433287	0.7524282956875696			
[mm] SIM translation stage pos	250.455976	250.466033080201			
[mm] SIM translation stage offset	0	-0.01005468664627074			
[s] Observation start time (MET)	505683279.985852	505683278.96085			
Observation start date	2014-01-09T19:34:40	2014-01-09T19:34:38			
[s] Observation end time (MET)	505803067.642438	505803066.61744			
Observation end date	2014-01-11T04:51:08	2014-01-11T04:51:06			
Read mode	TIMED	TIMED			

## 2.3 Star Slots

## 2.4 FID Slots

## A Summary

### A.1 Status

V&V Scientist	Jen Lauer
V&V Date (YYYY-MM-DD)	2014.01.13
V&V Edition	1
V&V Disposition and Status	OK
V&V Charge Time	117.85340474933

### A.2 Comments