

# V&V Reference Report

## L2 ASCDS Version : 10.2.4

Observation 62673 - L2 Version 1  
Chandra X-Ray Center

L2 Processing Date : Jul 28 2014

## Contents

<b>1</b>	<b>Front</b>	<b>2</b>
<b>2</b>	<b>OBI</b>	<b>3</b>
2.1	OBI . . . . .	3
2.1.1	Images . . . . .	3
2.1.2	Bias . . . . .	3
2.1.3	Parameters . . . . .	4
2.1.4	Events . . . . .	4
2.2	Compared Parameters . . . . .	5
2.3	Star Slots . . . . .	6
2.4	FID Slots . . . . .	6
<b>A</b>	<b>Summary</b>	<b>7</b>
A.1	Status . . . . .	7
A.2	Comments . . . . .	7

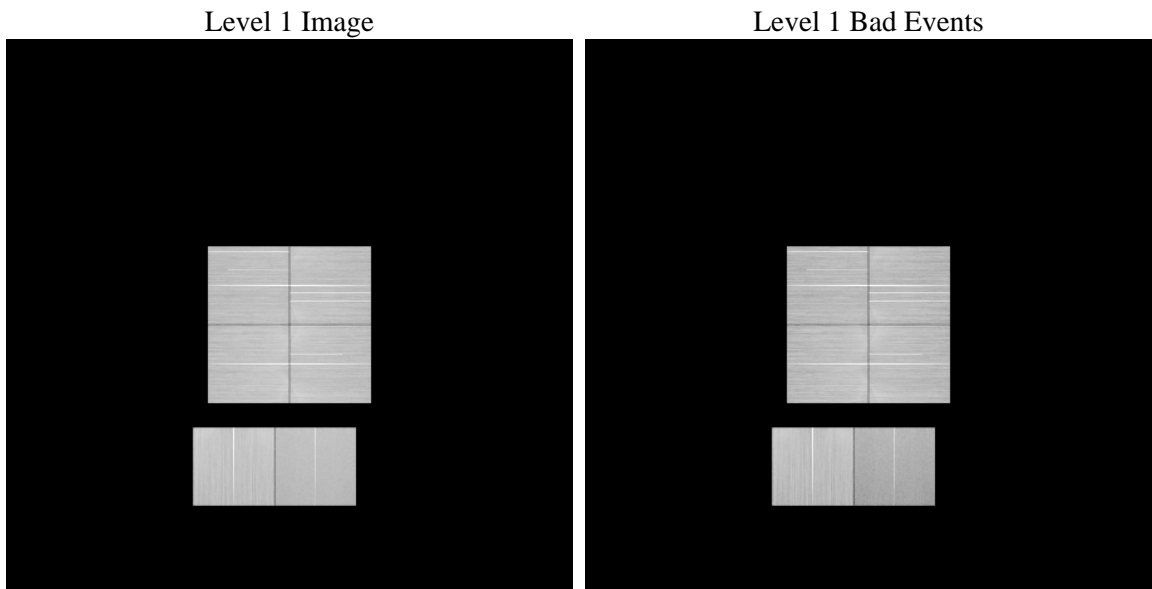
# 1 Front

seq_num	&#160	Sequence number
obs_id	62673	Observation id
title	ACIS-012367 diagnostics	Proposal title
observer	CHANDRA engineering request/realtime commanding	Principal investig
object	&#160	Source name
dtcycle	0	&#160
cycle	P	events from which exps? Prim/Second/Both
ra_targ	0.0	Observer's specified target RA [deg]
dec_targ	0.0	Observer's specified target Dec [deg]
ra_nom	73.984952268734	Nominal RA [deg]
dec_nom	42.026613866403	Nominal Dec [deg]
roll_nom	80.027406940616	Nominal Roll [deg]
revision	1	Processing version of data
ontime	75475.199718893	Sum of GTIs [s]
livetime	74519.487294343	Livetime [s]
ontime0	75475.199718893	Sum of GTIs [s]
ontime1	75475.199718893	Sum of GTIs [s]
ontime2	75475.199718893	Sum of GTIs [s]
ontime3	75475.199718893	Sum of GTIs [s]
ontime6	75475.199718893	Sum of GTIs [s]
ontime7	75475.199718893	Sum of GTIs [s]
l2events	1553580	Number of level 2 events

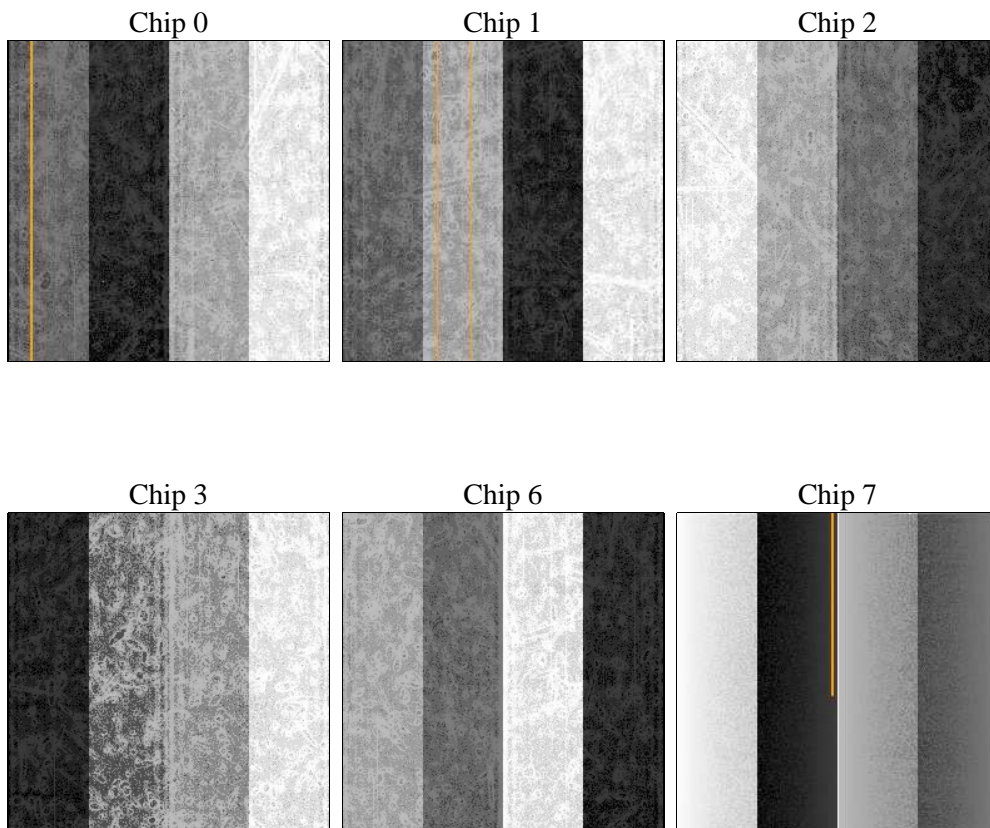
## 2 OBI

### 2.1 OBI

#### 2.1.1 Images



#### 2.1.2 Bias



### 2.1.3 Parameters

obi_num	0	Obi number	sched_exp_time	0.0	[s] Scheduled observation exposure time
ascdsver	10.2.4	Processing system revision	ontime	75475.199718893	Sum of GTIs [s]
caldsver	4.6.2	&#160	ontime0	75475.199718893	Sum of GTIs [s]
date	2014-07-28T17:54:54	Date and time of file creation	ontime1	75475.199718893	Sum of GTIs [s]
revision	1	Processing version of data	ontime2	75475.199718893	Sum of GTIs [s]
			ontime3	75475.199718893	Sum of GTIs [s]
			ontime6	75475.199718893	Sum of GTIs [s]
			ontime7	75475.199718893	Sum of GTIs [s]
			l1events	7852296	Number of level 1 events

### 2.1.4 Events

	ccd 0	ccd 1	ccd 2	ccd 3	ccd 6	ccd 7		ccd 0	ccd 1	ccd 2	ccd 3	ccd 6	ccd 7
level 1 events	1265289	1343669	1393491	1389501	1388561	1071785	grade 0 events	115974	113106	120425	119182	117540	6352
rejected events	1032355	1109594	1158998	1156044	1145929	599835		9%	8%	8%	8%	8%	5%
rejected %	81%	82%	83%	83%	82%	55%	grade 1 events	639	577	679	723	598	815
								0%	0%	0%	0%	0%	0%
							grade 2 events	47463	49513	45952	45012	49590	1151
								3%	3%	3%	3%	3%	10%
							grade 3 events	16271	15860	16208	16411	16404	3812
								1%	1%	1%	1%	1%	3%
							grade 4 events	15925	16010	16343	16566	16166	3763
								1%	1%	1%	1%	1%	3%
							grade 5 events	25602	26093	24335	28496	27485	6785
								2%	1%	1%	2%	1%	6%
							grade 6 events	37310	39589	35566	36300	42935	2175
								2%	2%	2%	2%	3%	20%
							grade 7 events	1006105	1082921	1133983	1126811	1117843	5311
								79%	80%	81%	81%	80%	49%

## 2.2 Compared Parameters

Parameter	Planned	Actual	Parameter	Planned	Actual
Instrument	ACIS	ACIS	Obspar format version number	7	7
Detector	ACIS-012367	ACIS-012367	Obspar file type	PREDICTED	ACTUAL
Grating	NONE	NONE	Obspar update status	NONE	UPDATED
Data mode	FAINT	FAINT	Number of optional ACIS chips dropped	0	0
Observation mode	SECONDARY	SECONDARY	On-chip summing requested	N	N
[deg] Pointing RA	0	73.98495226873379	Subarray requested	NONE	NONE
[deg] Pointing Dec	0	42.02661386640285	Alternating exposures requested	N	N
[deg] Pointing Roll	0.0	80.0274069406164	[s] Primary exposure time	3.2	3.2
[mm] SIM focus pos	-1.429586	-1.428180813131781			
[mm] SIM defocus	0.1037507710433287	0.1051558262725154			
[mm] SIM translation stage pos	250.455976	250.4635187648994			
[mm] SIM translation stage offset	0	-0.007540371344731511			
[s] Observation start time (MET)	522815493.781084	522815492.75608			
Observation start date	2014-07-27T02:31:34	2014-07-27T02:31:32			
[s] Observation end time (MET)	522892868.985359	522892867.96036			
Observation end date	2014-07-28T00:01:09	2014-07-28T00:01:07			
Read mode	TIMED	TIMED			

## **2.3 Star Slots**

## **2.4 FID Slots**

## A Summary

### A.1 Status

V&V Scientist	Beth Sundheim
V&V Date (YYYY-MM-DD)	2014.07.28
V&V Edition	1
V&V Disposition and Status	OK
V&V Charge Time	75.475199718893

### A.2 Comments